

Data Path : Z:\SVOASRV\HPCHEM1\BNA\_M\DATA\BM070119\  
 Data File : BM021310.D  
 Acq On : 01 Jul 2019 15:39  
 Operator : HP/JU  
 Sample : K3578-01  
 Misc :  
 ALS Vial : 11 Sample Multiplier: 1

Instrument :  
 BNA\_M  
 ClientSampleId :  
 JLJG2

Quant Time: Jul 02 00:55:04 2019  
 Quant Method : Z:\SVOASRV\HPCHEM1\BNA\_M\METHODS\SOM-EPA-BM061419MA.M  
 Quant Title : SVOA CALIBRATION  
 QLast Update : Mon Jul 01 01:16:07 2019  
 Response via : Initial Calibration

Internal Standards	R.T.	QIon	Response	Conc	Units	Dev(Min)
1) 1,4-Dichlorobenzene-d4	7.76	152	201713	20.00	ng/ul	0.00
18) Naphthalene-d8	10.54	136	900899	20.00	ng/ul	0.00
35) Acenaphthene-d10	14.40	164	557166	20.00	ng/ul	0.00
61) Phenanthrene-d10	17.14	188	1132400	20.00	ng/ul	0.00
77) Chrysene-d12	21.33	240	833946	20.00	ng/ul	0.00
85) Perylene-d12	23.61	264	1001087	20.00	ng/ul	0.00

## System Monitoring Compounds

3) 1,4-Dioxane-d8	3.28	96	27506	6.47	ng/uL	0.00
5) Phenol-d5	6.93	99	175934	10.02	ng/ul	0.00
7) Bis-(2-Chloroethyl)ether-d	7.10	67	403422	38.57	ng/ul	0.00
9) 2-Chlorophenol-d4	7.29	132	500306	35.07	ng/ul	0.00
13) 4-Methylphenol-d8	8.46	113	345674	23.59	ng/ul	0.00
19) Nitrobenzene-d5	8.92	128	320856	43.86	ng/ul	0.00
22) 2-Nitrophenol-d4	9.63	143	381614	46.99	ng/ul	0.00
26) 2,4-Dichlorophenol-d3	10.17	165	692222	41.92	ng/ul	0.00
29) 4-Chloroaniline-d4	10.70	131	3690	0.21	ng/ul	0.00
43) Dimethylphthalate-d6	13.81	166	2280525	45.30	ng/ul	0.00
46) Acenaphthylene-d8	14.09	160	2648625	42.98	ng/ul	0.00
51) 4-Nitrophenol-d4	14.62	143	51036	6.23	ng/ul	0.00
57) Fluorene-d10	15.39	176	1905924	43.52	ng/ul	0.00
62) 4,6-Dinitro-2-methylphenol	15.53	200	257346	36.97	ng/ul	0.00
70) Anthracene-d10	17.24	188	2623400	44.58	ng/ul	0.00
78) Pyrene-d10	19.54	212	2410317	48.17	ng/ul	0.00
89) Benzo(a)pyrene-d12	23.47	264	2654953	44.95	ng/ul	0.00

## Target Compounds

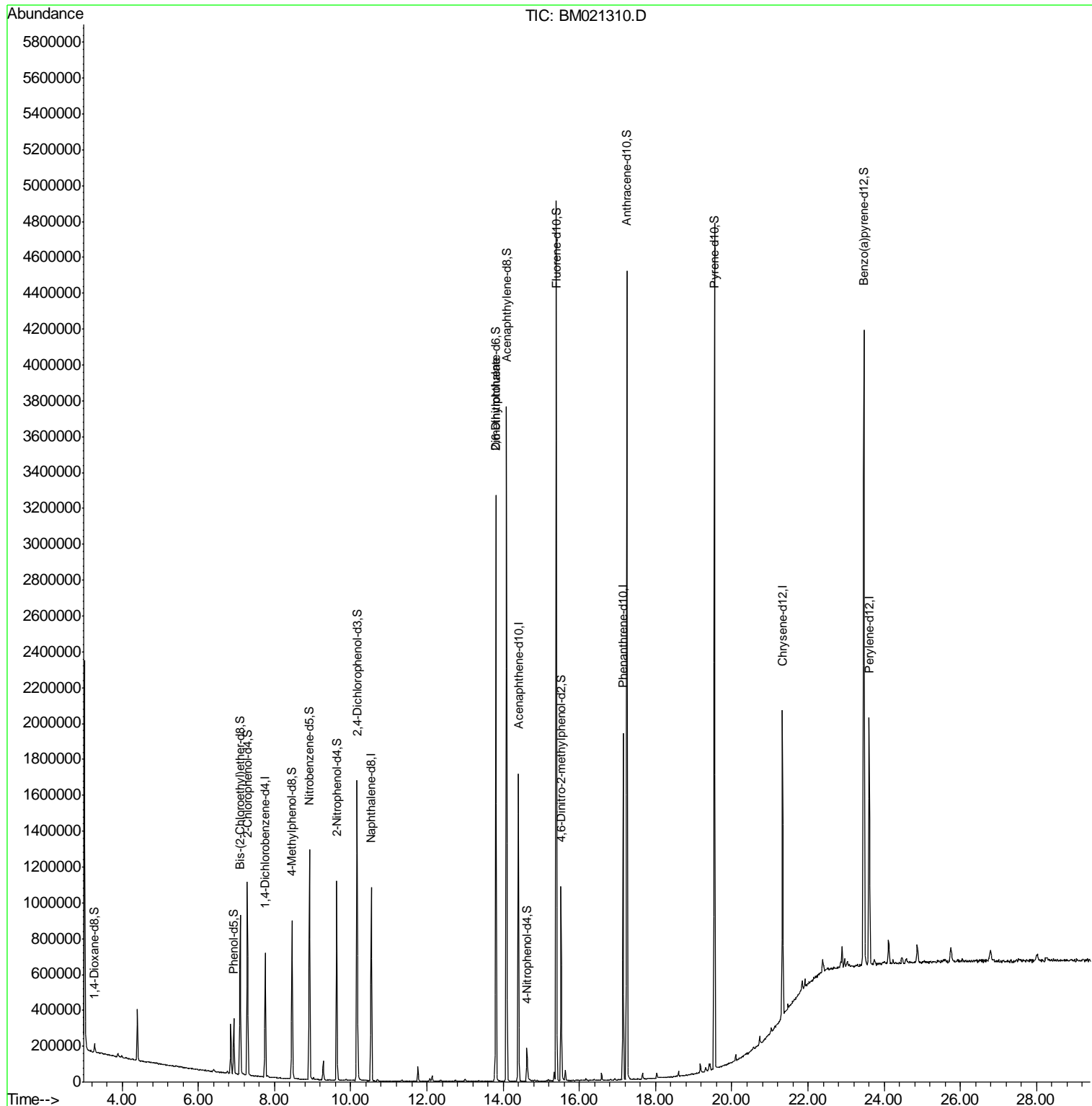
Target Compounds	R.T.	QIon	Response	Conc	Units	Qvalue
45) 2,6-Dinitrotoluene	13.82	165	15434	1.765	ng/ul#	42

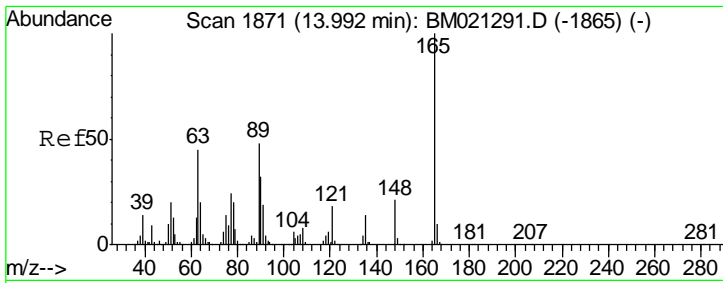
(#) = qualifier out of range (m) = manual integration (+) = signals summed

Data Path : Z:\SVOASRV\HPCHEM1\BNA\_M\DATA\BM070119\  
 Data File : BM021310.D  
 Acq On : 01 Jul 2019 15:39  
 Operator : HP/JU  
 Sample : K3578-01  
 Misc :  
 ALS Vial : 11 Sample Multiplier: 1

Instrument :  
 BNA\_M  
 ClientSampled :  
 JLJG2

Quant Time: Jul 02 00:55:04 2019  
 Quant Method : Z:\SVOASRV\HPCHEM1\BNA\_M\METHODS\SOM-EPA-BM061419MA.M  
 Quant Title : SVOA CALIBRATION  
 QLast Update : Mon Jul 01 01:16:07 2019  
 Response via : Initial Calibration





#45  
 2,6-Dinitrotoluene  
 Concen: 1.765 ng/ul  
 RT: 13.82 min Scan# 1841  
 Delta R.T. -0.18 min  
 Lab File: BM021310.D  
 Acq: 01 Jul 2019 15:39

Instrument :  
 BNA\_M  
 ClientSampled :  
 JLJG2

Tgt Ion	Resp	Lower	Upper
165	15434		
89	0.0	43.6	65.4#
121	25.6	16.5	24.7#

