

Data Path : Z:\SVOASRV\HPCHEM1\BNA M\DATA\BM071918\
 Data File : BM015999.D
 Acq On : 19 Jul 2018 20:38
 Operator : SJ/JU
 Sample : J4023-18
 Misc :
 ALS Vial : 15 Sample Multiplier: 1

Instrument :
 BNA_M
 ClientSampleId :
 DB1M9

Integration Parameters: LSCINT.P

Integrator: RTE
 Smoothing : OFF
 Sampling : 1
 Start Thrs: 0.2
 Stop Thrs : 0

Filtering: 5
 Min Area: 1 % of largest Peak
 Max Peaks: 100
 Peak Location: TOP

If leading or trailing edge < 100 prefer < Baseline drop else tangent >
 Peak separation: 5

Method : Z:\SVOASRV\HPCHEM1\BNA_M\METHODS\SOM-EPA-BM071318MA.M
 Title : SVOA CALIBRATION

Signal : TIC

peak #	R.T. min	first scan	max scan	last scan	PK TY	peak height	corr. area	corr. % max.	% of total
1	7.410	696	701	716	rBV	168872	344581	24.01%	1.759%
2	7.575	722	729	740	rBV	122924	196875	13.72%	1.005%
3	7.781	759	764	783	rBB	174475	304363	21.20%	1.554%
4	8.257	838	845	854	rBV	251242	426705	29.73%	2.179%
5	8.969	961	966	979	rBV	205310	370430	25.81%	1.891%
6	9.439	1041	1046	1060	rBV	163393	300442	20.93%	1.534%
7	10.163	1164	1169	1180	rBV	141884	259553	18.08%	1.325%
8	10.704	1255	1261	1276	rBV	215891	406103	28.29%	2.074%
9	11.080	1318	1325	1336	rBV	390130	666939	46.46%	3.405%
10	11.228	1345	1350	1370	rBV	87365	179509	12.51%	0.917%
11	14.280	1863	1869	1874	rBV	447107	610338	42.52%	3.116%
12	14.327	1874	1877	1884	rVB	130593	171822	11.97%	0.877%
13	14.580	1913	1920	1929	rBV	451352	672163	46.83%	3.432%
14	14.880	1965	1971	1980	rBV2	611058	903076	62.92%	4.611%
15	15.098	2003	2008	2026	rBV	119992	267205	18.62%	1.364%
16	15.863	2132	2138	2146	rBV	611513	873169	60.83%	4.458%
17	16.004	2157	2162	2170	rBV	165603	256512	17.87%	1.310%
18	17.609	2429	2435	2440	rBV	762454	1113176	77.55%	5.684%
19	17.651	2440	2442	2446	rVV	14369	15224	1.06%	0.078%
20	17.704	2446	2451	2461	rVV2	662353	939498	65.45%	4.797%
21	18.339	2552	2559	2564	rBV	80605	110609	7.71%	0.565%
22	18.398	2564	2569	2574	rBV	207485	266930	18.60%	1.363%
23	18.456	2574	2579	2588	rVV	759256	995718	69.37%	5.084%
24	18.733	2622	2626	2631	rBV7	10652	17765	1.24%	0.091%
25	19.562	2764	2767	2768	rBV2	67067	68045	4.74%	0.347%
26	19.592	2768	2772	2778	rVV	320533	496506	34.59%	2.535%
27	19.703	2787	2791	2798	rBV	213620	274913	19.15%	1.404%
28	19.962	2830	2835	2846	rVV	863383	1309268	91.22%	6.685%
29	20.439	2911	2916	2921	rBV5	44976	70485	4.91%	0.360%
30	20.509	2925	2928	2931	rBV4	16793	19042	1.33%	0.097%
31	20.762	2968	2971	2976	rBV6	21959	33751	2.35%	0.172%
32	20.927	2996	2999	3003	rBV3	37086	50577	3.52%	0.258%
33	21.386	3073	3077	3088	rBV3	239582	502181	34.99%	2.564%
34	21.686	3125	3128	3129	rBV2	51342	53133	3.70%	0.271%

Data Path : Z:\SVOASRV\HPCHEM1\BNA M\DATA\BM071918\
Data File : BM015999.D
Acq On : 19 Jul 2018 20:38
Operator : SJ/JU
Sample : J4023-18
Misc :
ALS Vial : 15 Sample Multiplier: 1

Instrument :
BNA_M
ClientSampleId :
DB1M9

Integration Parameters: LSCINT.P
Integrator: RTE
Smoothing : OFF Filtering: 5
Sampling : 1 Min Area: 1 % of largest Peak
Start Thrs: 0.2 Max Peaks: 100
Stop Thrs : 0 Peak Location: TOP

If leading or trailing edge < 100 prefer < Baseline drop else tangent >
Peak separation: 5

Method : Z:\SVOASRV\HPCHEM1\BNA_M\METHODS\SOM-EPA-BM071318MA.M
Title : SVOA CALIBRATION

35	21.721	3129	3134	3139	rVB	1054236	1435358	100.00%	7.329%
36	21.821	3148	3151	3154	rBV	71813	68045	4.74%	0.347%
37	22.274	3224	3228	3231	rBV	195100	246992	17.21%	1.261%
38	23.956	3508	3514	3528	rVB	608233	1237237	86.20%	6.317%
39	24.109	3533	3540	3550	rVB	676002	1322089	92.11%	6.750%
40	24.580	3616	3620	3628	rVB2	161445	301051	20.97%	1.537%
41	26.303	3908	3913	3921	rVB2	182818	452062	31.49%	2.308%
42	27.338	4082	4089	4109	rVB8	213261	975821	67.98%	4.982%

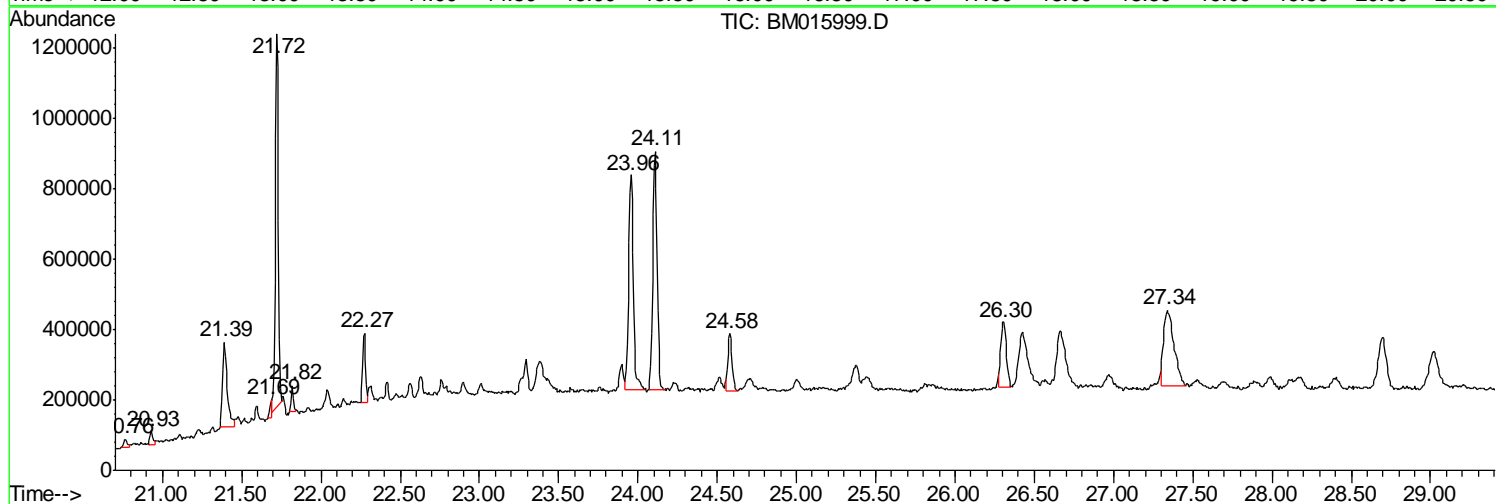
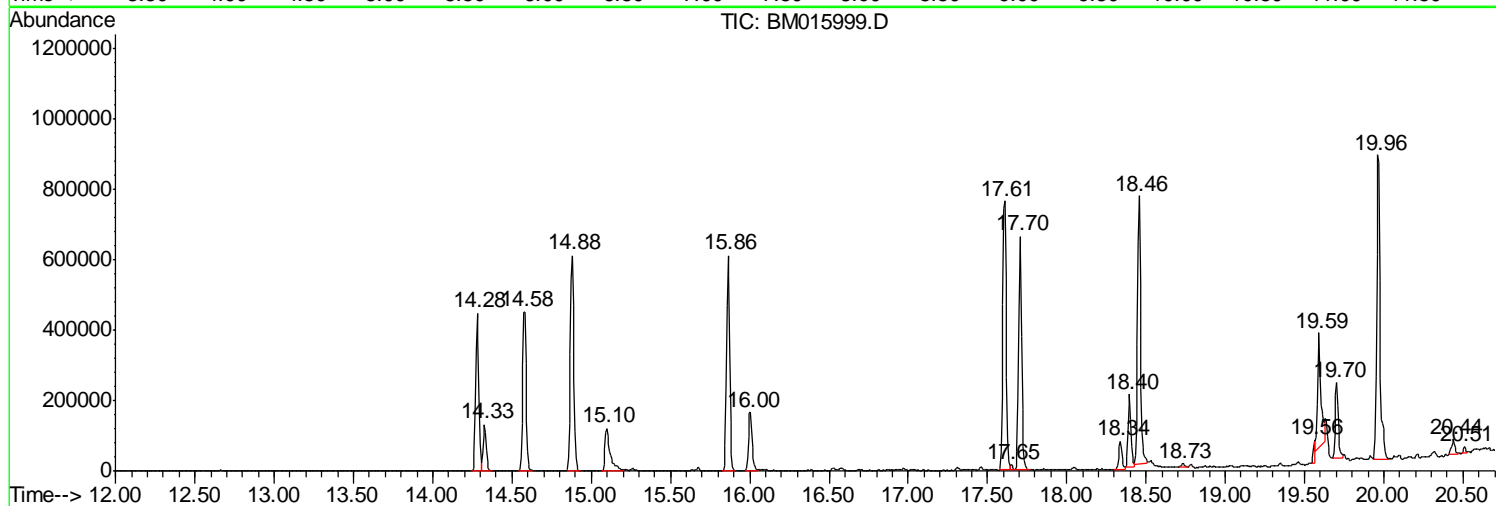
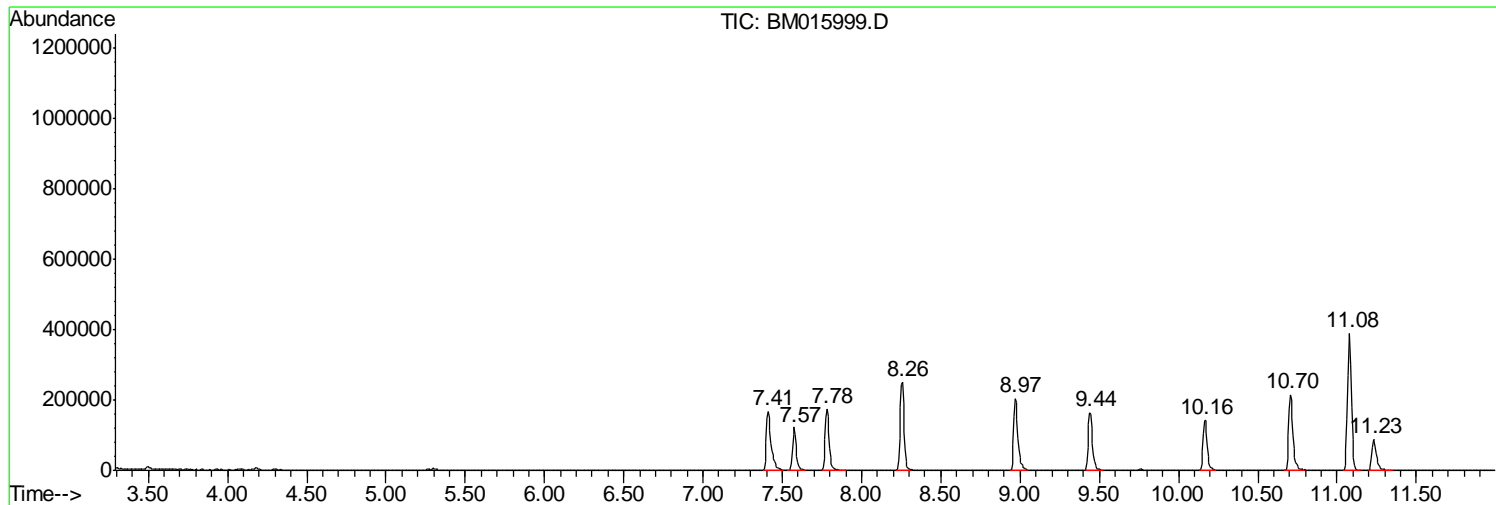
Sum of corrected areas: 19585261

Data Path : Z:\SVOASRV\HPCHEM1\BNA M\DATA\BM071918\
Data File : BM015999.D
Acq On : 19 Jul 2018 20:38
Operator : SJ/JU
Sample : J4023-18
Misc :
ALS Vial : 15 Sample Multiplier: 1

Instrument :
BNA_M
ClientSampled :
DB1M9

Quant Method : Z:\SVOASRV\HPCHEM1\BNA_M\METHODS\SOM-EPA-BM071318MA.M
Quant Title : SVOA CALIBRATION

TIC Library : C:\Database\NIST11.L
TIC Integration Parameters: LSCINT.P



Data Path : Z:\SVOASRV\HPCHEM1\BNA M\DATA\BM071918\
 Data File : BM015999.D
 Acq On : 19 Jul 2018 20:38
 Operator : SJ/JU
 Sample : J4023-18
 Misc :
 ALS Vial : 15 Sample Multiplier: 1

Instrument :
 BNA_M
 ClientSampleID :
 DB1M9

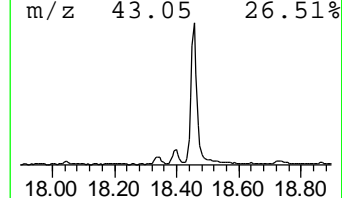
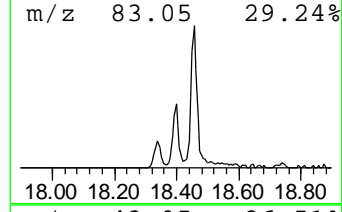
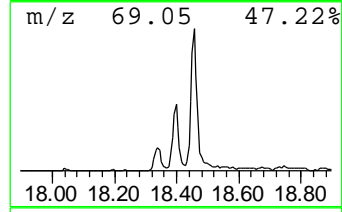
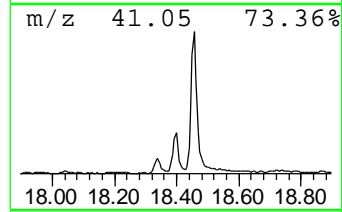
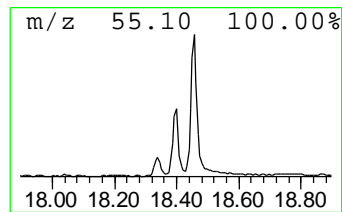
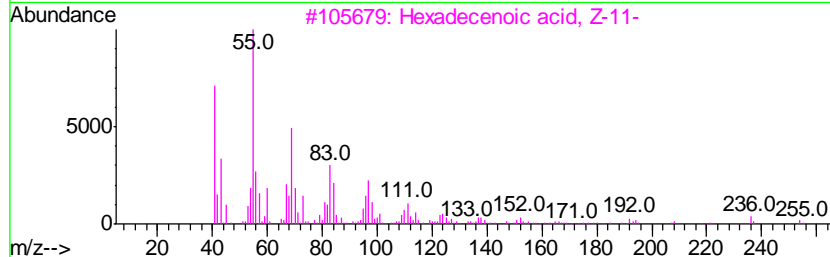
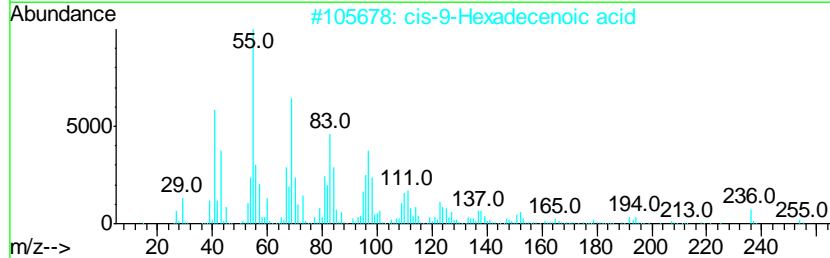
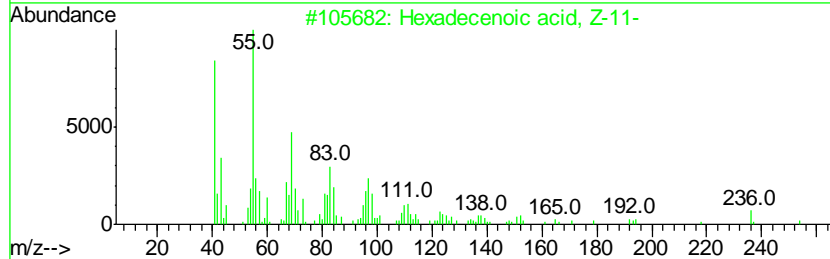
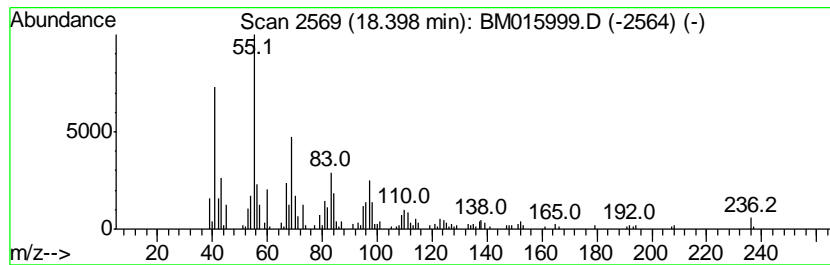
Quant Method : Z:\SVOASRV\HPCHEM1\BNA_M\METHODS\SOM-EPA-BM071318MA.M
 Quant Title : SVOA CALIBRATION

TIC Library : C:\Database\NIST11.L
 TIC Integration Parameters: LSCINT.P

 Peak Number 1 Hexadecenoic acid, Z-11- Concentration Rank 5

R.T.	EstConc	Area	Relative to ISTD	R.T.
18.40	4.80 ng/ul	266930	Phenanthrene-d10	17.61

Hit#	of	Tentative ID	MW	MolForm	CAS#	Qual
1	5	Hexadecenoic acid, Z-11-	254	C16H30O2	002416-20-8	90
2		cis-9-Hexadecenoic acid	254	C16H30O2	1000333-19-5	87
3		Hexadecenoic acid, Z-11-	254	C16H30O2	002416-20-8	81
4		Myristoleic acid	226	C14H26O2	000544-64-9	74
5		Z-7-Tetradecenoic acid	226	C14H26O2	1000130-98-4	72



Data Path : Z:\SVOASRV\HPCHEM1\BNA M\DATA\BM071918\
 Data File : BM015999.D
 Acq On : 19 Jul 2018 20:38
 Operator : SJ/JU
 Sample : J4023-18
 Misc :
 ALS Vial : 15 Sample Multiplier: 1

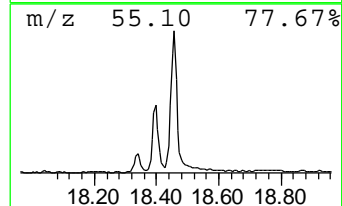
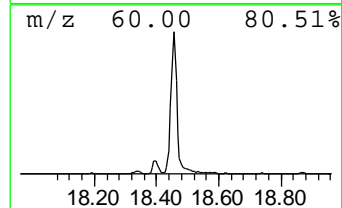
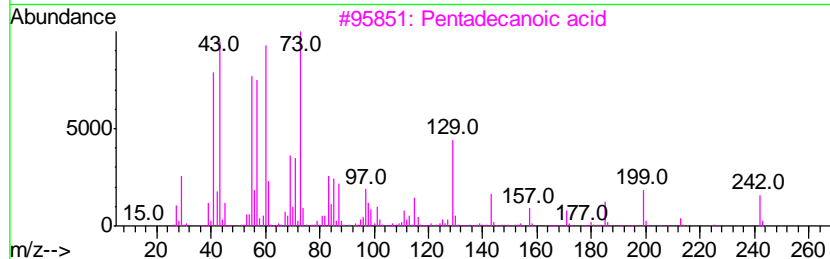
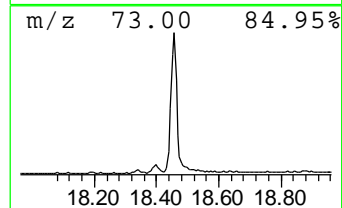
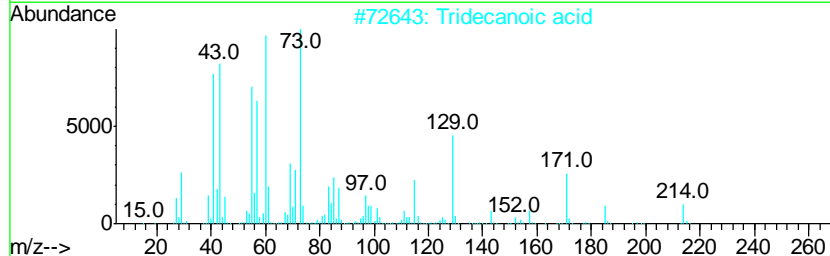
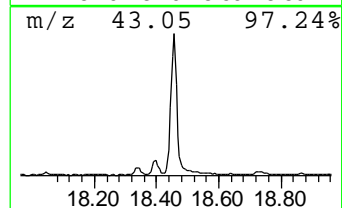
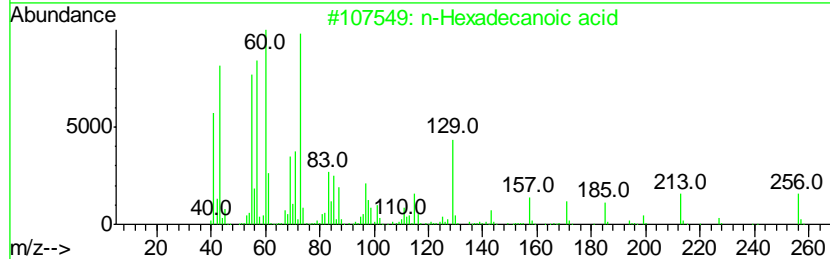
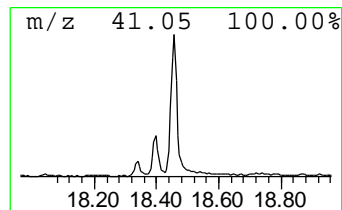
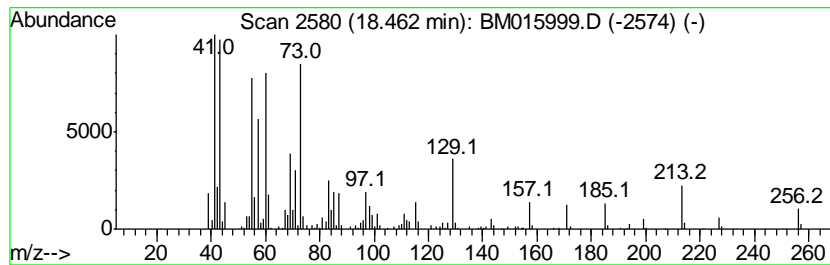
Instrument :
 BNA_M
 ClientSampleID :
 DB1M9

Quant Method : Z:\SVOASRV\HPCHEM1\BNA_M\METHODS\SOM-EPA-BM071318MA.M
 Quant Title : SVOA CALIBRATION

TIC Library : C:\Database\NIST11.L
 TIC Integration Parameters: LSCINT.P

 Peak Number 2 n-Hexadecanoic acid Concentration Rank 1

R.T.	EstConc	Area	Relative to ISTD	R.T.		
18.46	17.89 ng/ul	995718	Phenanthrene-d10	17.61		
Hit# of	5	Tentative ID	MW	MolForm	CAS#	Qual
1		n-Hexadecanoic acid	256	C16H32O2	000057-10-3	99
2		Tridecanoic acid	214	C13H26O2	000638-53-9	95
3		Pentadecanoic acid	242	C15H30O2	001002-84-2	81
4		n-Hexadecanoic acid	256	C16H32O2	000057-10-3	76
5		Tetradecanoic acid	228	C14H28O2	000544-63-8	74



Data Path : Z:\SVOASRV\HPCHEM1\BNA M\DATA\BM071918\
 Data File : BM015999.D
 Acq On : 19 Jul 2018 20:38
 Operator : SJ/JU
 Sample : J4023-18
 Misc :
 ALS Vial : 15 Sample Multiplier: 1

Instrument :
 BNA_M
 ClientSampleID :
 DB1M9

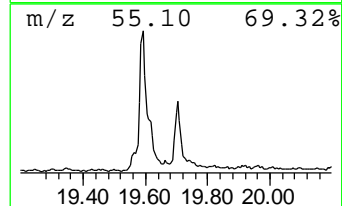
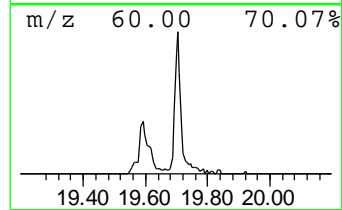
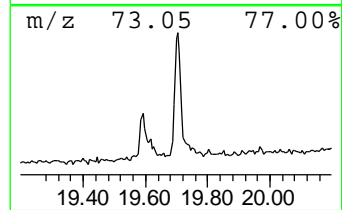
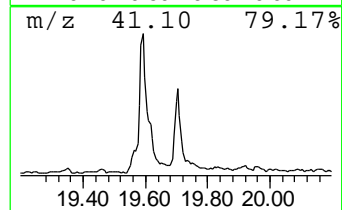
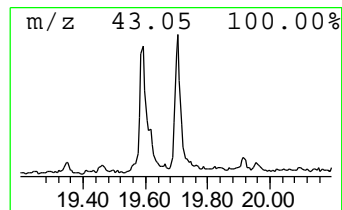
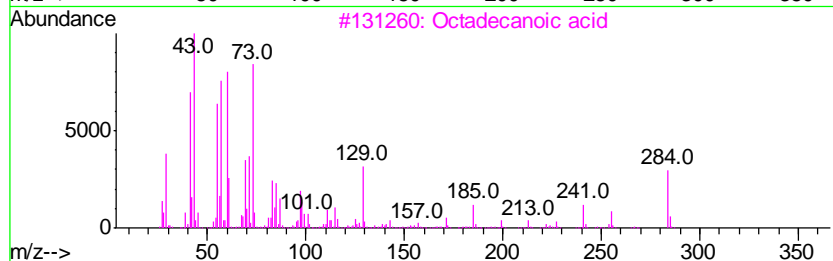
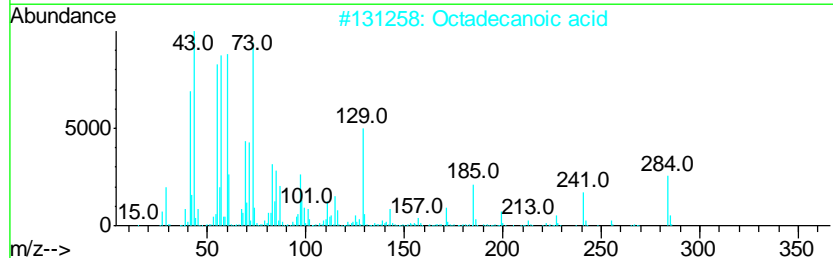
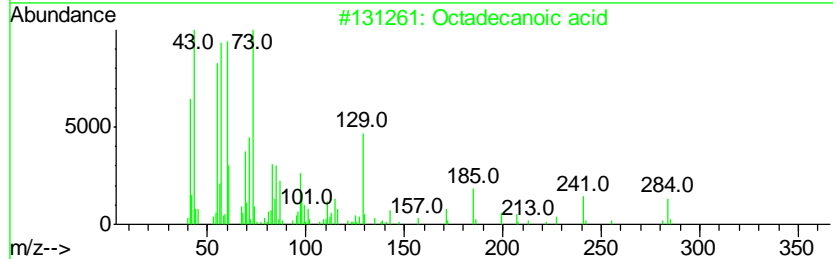
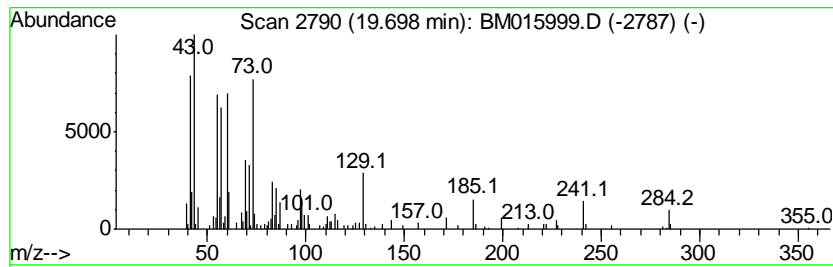
Quant Method : Z:\SVOASRV\HPCHEM1\BNA_M\METHODS\SOM-EPA-BM071318MA.M
 Quant Title : SVOA CALIBRATION

TIC Library : C:\Database\NIST11.L
 TIC Integration Parameters: LSCINT.P

 Peak Number 3 Octadecanoic acid Concentration Rank 7

R.T.	EstConc	Area	Relative to ISTD	R.T.
19.70	3.83 ng/ul	274913	Chrysene-d12	21.72

Hit#	of	Tentative ID	MW	MolForm	CAS#	Qual
1	5	Octadecanoic acid	284	C18H36O2	000057-11-4	99
2		Octadecanoic acid	284	C18H36O2	000057-11-4	99
3		Octadecanoic acid	284	C18H36O2	000057-11-4	93
4		Octadecanoic acid	284	C18H36O2	000057-11-4	90
5		Octadecanoic acid	284	C18H36O2	000057-11-4	90



Data Path : Z:\SVOASRV\HPCHEM1\BNA M\DATA\BM071918\
 Data File : BM015999.D
 Acq On : 19 Jul 2018 20:38
 Operator : SJ/JU
 Sample : J4023-18
 Misc :
 ALS Vial : 15 Sample Multiplier: 1

Instrument :
 BNA_M
 ClientSampleID :
 DB1M9

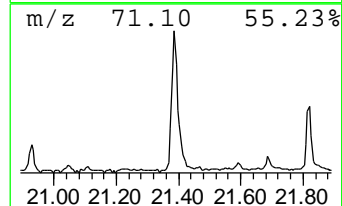
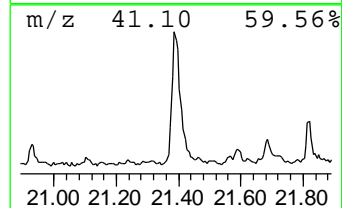
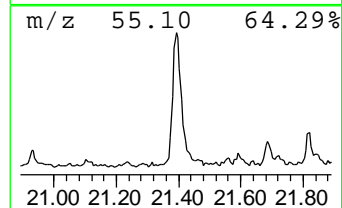
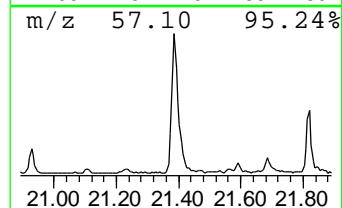
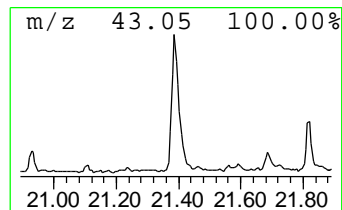
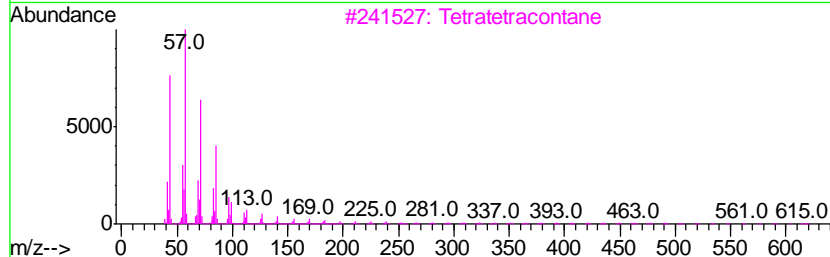
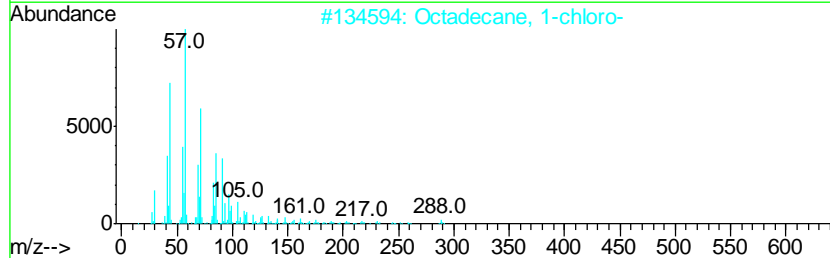
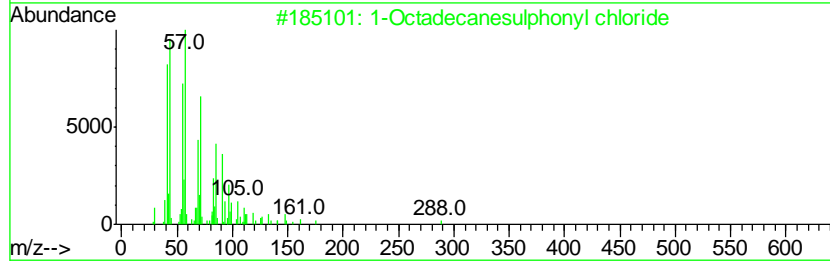
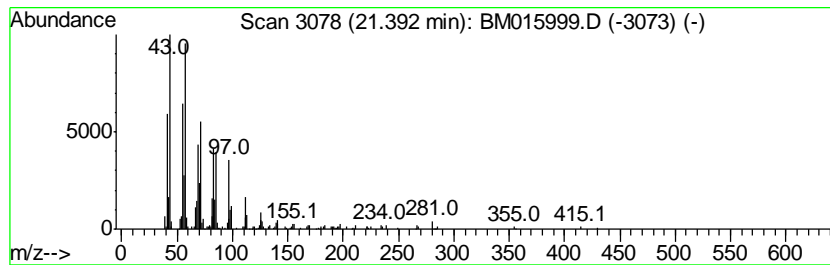
Quant Method : Z:\SVOASRV\HPCHEM1\BNA_M\METHODS\SOM-EPA-BM071318MA.M
 Quant Title : SVOA CALIBRATION

TIC Library : C:\Database\NIST11.L
 TIC Integration Parameters: LSCINT.P

 Peak Number 4 1-Octadecanesulphonyl chloride Concentration Rank 3

R.T.	EstConc	Area	Relative to ISTD	R.T.
21.39	7.00 ng/ul	502181	Chrysene-d12	21.72

Hit#	of	Tentative ID	MW	MolForm	CAS#	Qual
1	5	1-Octadecanesulphonyl chloride	352	C18H37ClO2S	1000342-70-4	91
2		Octadecane, 1-chloro-	288	C18H37Cl	003386-33-2	91
3		Tetratetracontane	619	C44H90	007098-22-8	91
4		Nonadecane	268	C19H40	000629-92-5	90
5		Heptacosane, 1-chloro-	414	C27H55Cl	062016-79-9	90



Data Path : Z:\SVOASRV\HPCHEM1\BNA M\DATA\BM071918\
 Data File : BM015999.D
 Acq On : 19 Jul 2018 20:38
 Operator : SJ/JU
 Sample : J4023-18
 Misc :
 ALS Vial : 15 Sample Multiplier: 1

Instrument :
 BNA_M
 ClientSampleID :
 DB1M9

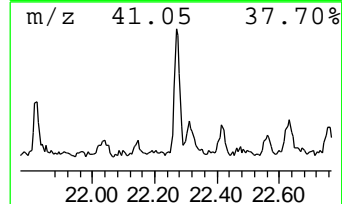
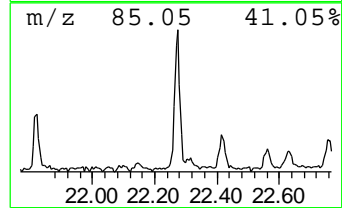
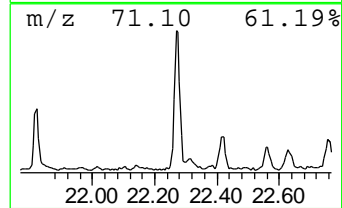
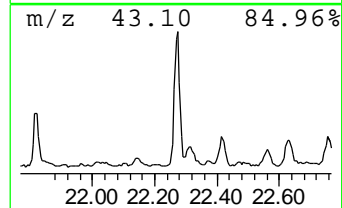
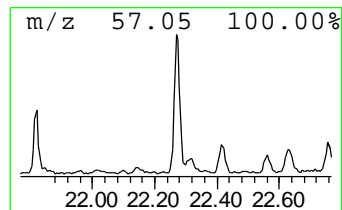
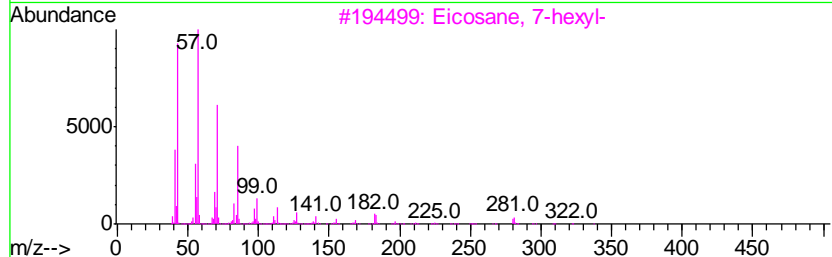
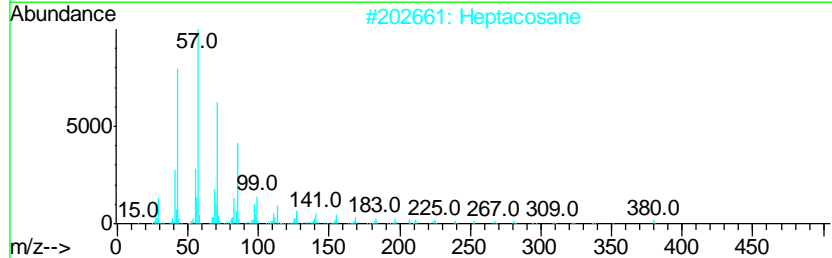
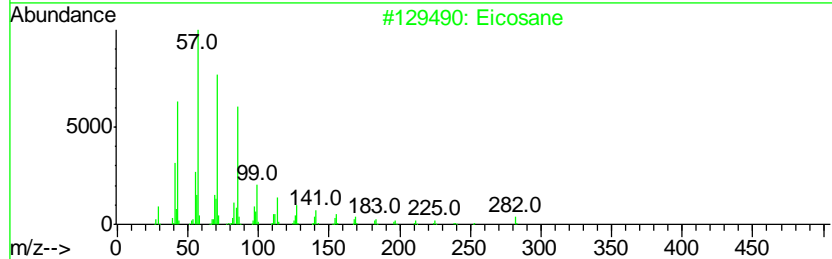
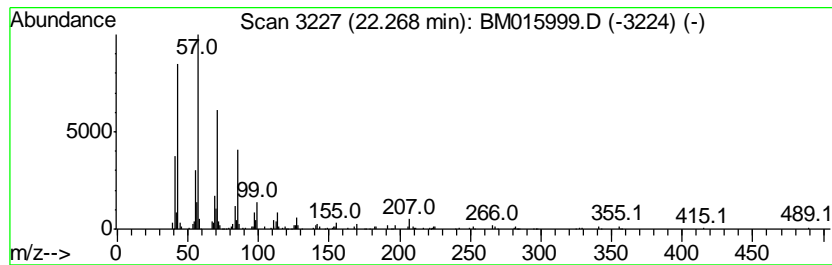
Quant Method : Z:\SVOASRV\HPCHEM1\BNA_M\METHODS\SOM-EPA-BM071318MA.M
 Quant Title : SVOA CALIBRATION

TIC Library : C:\Database\NIST11.L
 TIC Integration Parameters: LSCINT.P

 Peak Number 5 (DEL) Alkane: Straight-Chai... Concentration Rank 8

R.T.	EstConc	Area	Relative to ISTD	R.T.
22.27	3.44 ng/ul	246992	Chrysene-d12	21.72

Hit#	of	Tentative ID	MW	MolForm	CAS#	Qual
1	5	Eicosane	282	C20H42	000112-95-8	97
2		Heptacosane	380	C27H56	000593-49-7	91
3		Eicosane, 7-hexyl-	366	C26H54	055333-99-8	91
4		Docosane, 7-butyl-	366	C26H54	055282-15-0	91
5		Hexacosane	366	C26H54	000630-01-3	90



Data Path : Z:\SVOASRV\HPCHEM1\BNA M\DATA\BM071918\
 Data File : BM015999.D
 Acq On : 19 Jul 2018 20:38
 Operator : SJ/JU
 Sample : J4023-18
 Misc :
 ALS Vial : 15 Sample Multiplier: 1

Instrument :
 BNA_M
 ClientSampleID :
 DB1M9

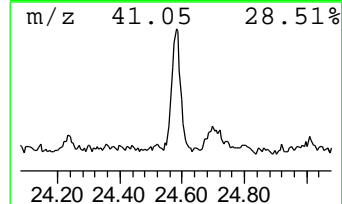
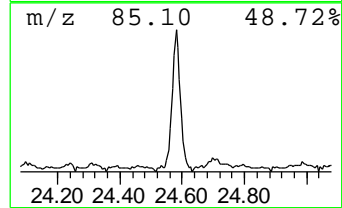
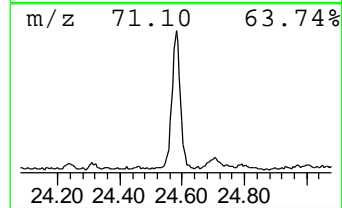
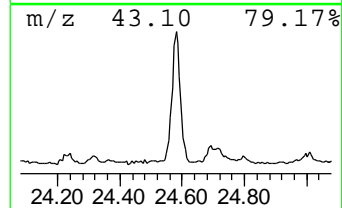
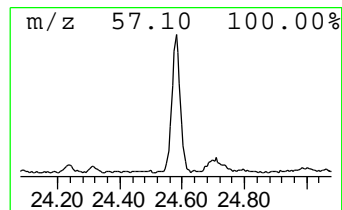
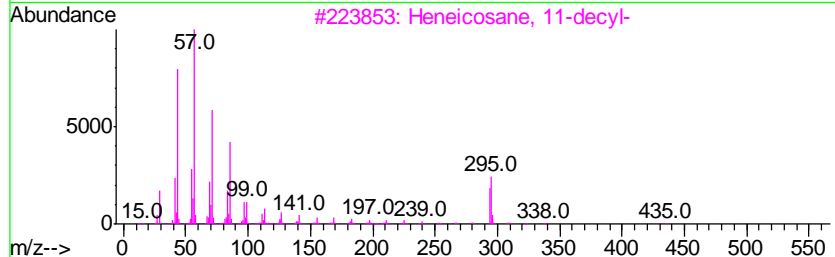
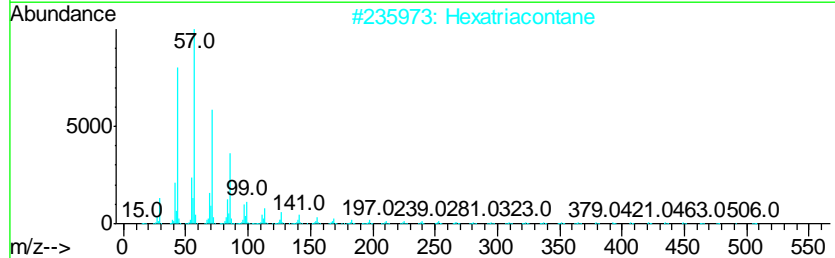
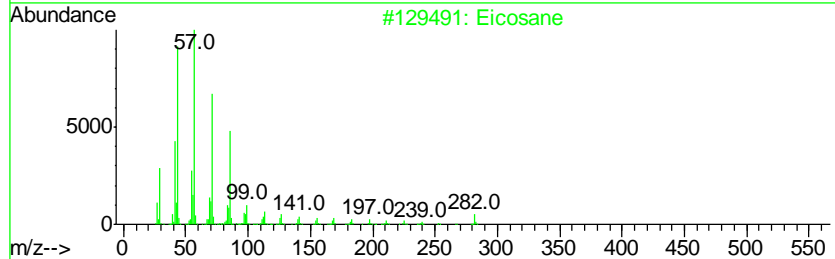
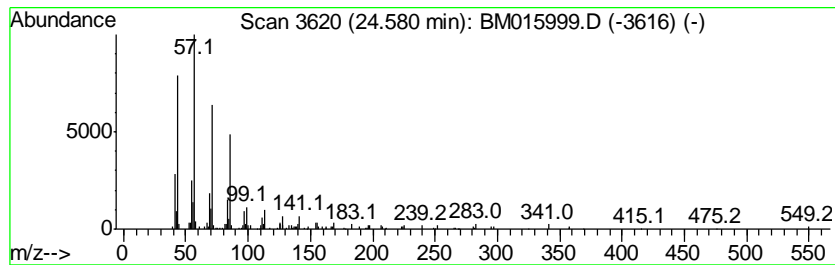
Quant Method : Z:\SVOASRV\HPCHEM1\BNA_M\METHODS\SOM-EPA-BM071318MA.M
 Quant Title : SVOA CALIBRATION

TIC Library : C:\Database\NIST11.L
 TIC Integration Parameters: LSCINT.P

 Peak Number 6 (DEL) Alkane: Straight-Chai... Concentration Rank 6

R.T.	EstConc	Area	Relative to ISTD	R.T.
24.58	4.55 ng/ul	301051	Perylene-d12	24.11

Hit#	of	Tentative ID	MW	MolForm	CAS#	Qual
1	5	Eicosane	282	C20H42	000112-95-8	90
2		Hexatriacontane	507	C36H74	000630-06-8	90
3		Heneicosane, 11-decyl-	437	C31H64	055320-06-4	90
4		Eicosane, 9-octyl-	394	C28H58	013475-77-9	87
5		Eicosane	282	C20H42	000112-95-8	87



Data Path : Z:\SVOASRV\HPCHEM1\BNA M\DATA\BM071918\
 Data File : BM015999.D
 Acq On : 19 Jul 2018 20:38
 Operator : SJ/JU
 Sample : J4023-18
 Misc :
 ALS Vial : 15 Sample Multiplier: 1

Instrument :
 BNA_M
 ClientSampleID :
 DB1M9

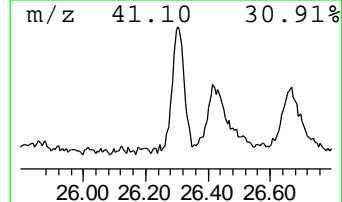
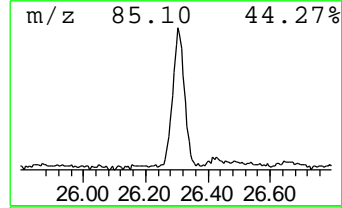
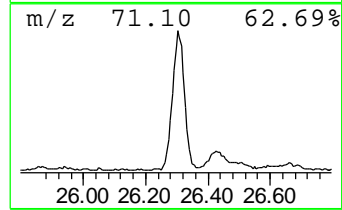
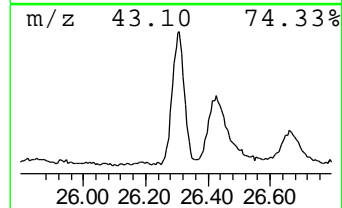
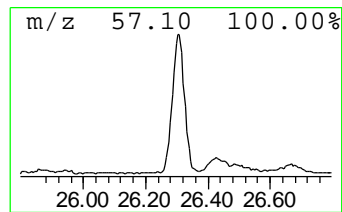
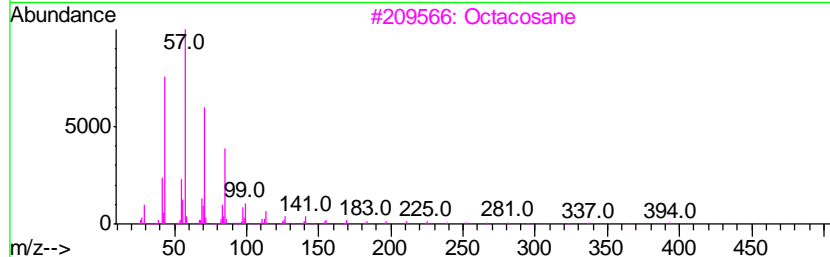
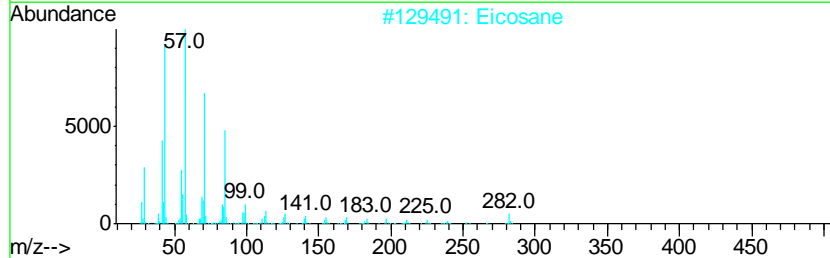
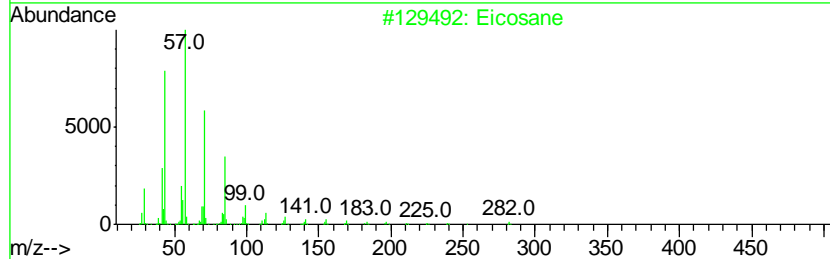
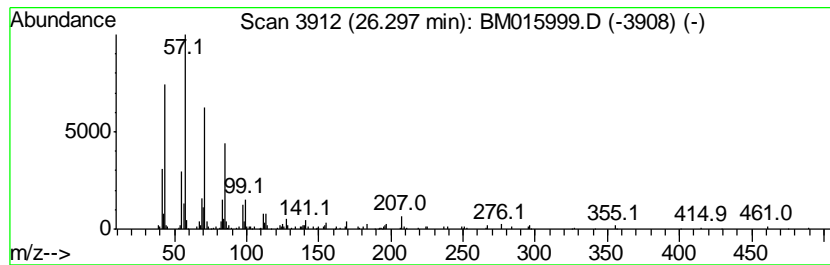
Quant Method : Z:\SVOASRV\HPCHEM1\BNA_M\METHODS\SOM-EPA-BM071318MA.M
 Quant Title : SVOA CALIBRATION

TIC Library : C:\Database\NIST11.L
 TIC Integration Parameters: LSCINT.P

 Peak Number 7 (DEL) Alkane: Straight-Chai... Concentration Rank 4

R.T.	EstConc	Area	Relative to ISTD	R.T.
26.30	6.84 ng/ul	452062	Perylene-d12	24.11

Hit#	of	Tentative ID	MW	MolForm	CAS#	Qual
1	5	Eicosane	282	C20H42	000112-95-8	95
2		Eicosane	282	C20H42	000112-95-8	91
3		Octacosane	394	C28H58	000630-02-4	90
4		2-methyloctacosane	408	C29H60	1000376-72-8	90
5		Hexatriacontane	507	C36H74	000630-06-8	90



Data Path : Z:\SVOASRV\HPCHEM1\BNA M\DATA\BM071918\
 Data File : BM015999.D
 Acq On : 19 Jul 2018 20:38
 Operator : SJ/JU
 Sample : J4023-18
 Misc :
 ALS Vial : 15 Sample Multiplier: 1

Instrument :
 BNA_M
 ClientSampled :
 DB1M9

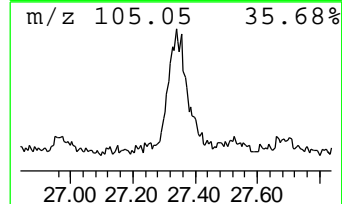
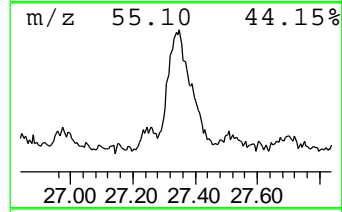
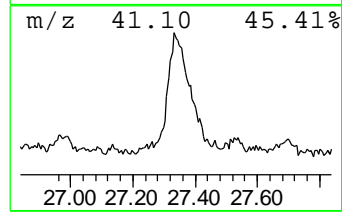
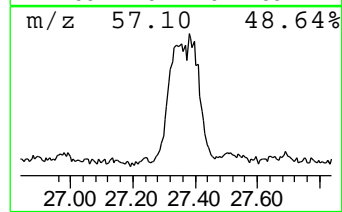
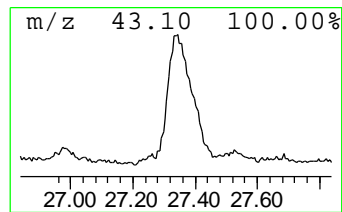
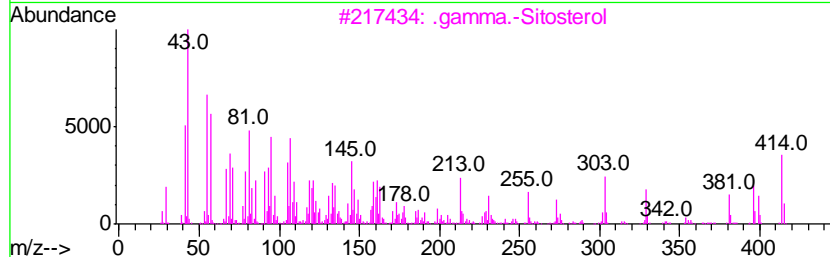
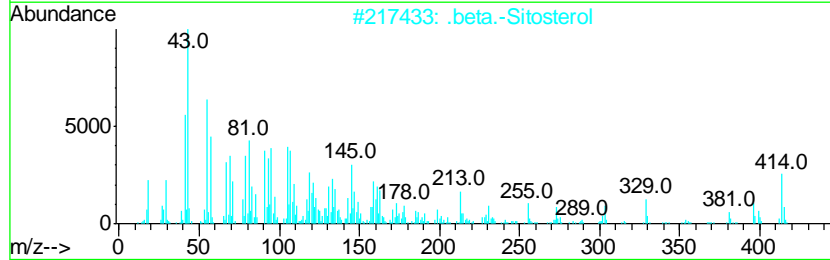
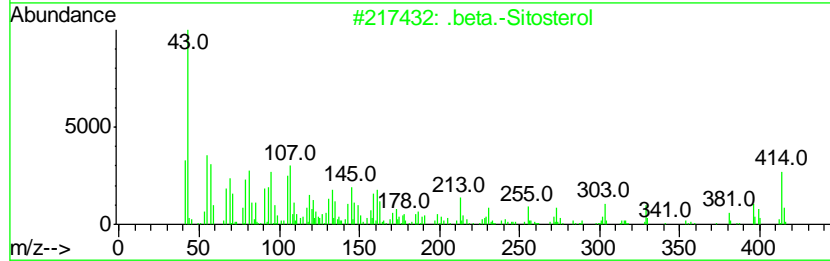
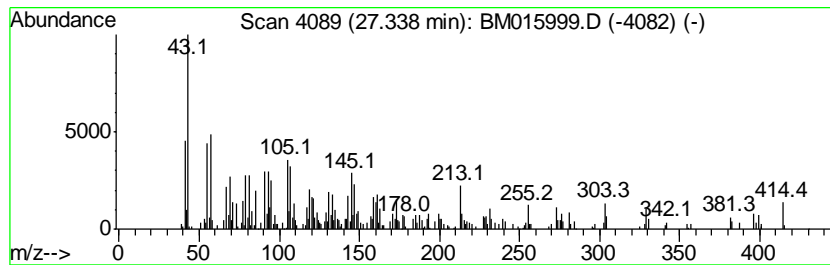
Quant Method : Z:\SVOASRV\HPCHEM1\BNA_M\METHODS\SOM-EPA-BM071318MA.M
 Quant Title : SVOA CALIBRATION

TIC Library : C:\Database\NIST11.L
 TIC Integration Parameters: LSCINT.P

 Peak Number 8 .beta.-Sitosterol Concentration Rank 2

R.T.	EstConc	Area	Relative to ISTD	R.T.
27.34	14.76 ng/ul	975821	Perylene-d12	24.11

Hit#	of	Tentative ID	MW	MolForm	CAS#	Qual
1	5	.beta.-Sitosterol	414	C29H50O	000083-46-5	89
2		.beta.-Sitosterol	414	C29H50O	000083-46-5	89
3		.gamma.-Sitosterol	414	C29H50O	000083-47-6	81
4		Cholest-5-ene, 3-ethoxy-, (3.beta...	414	C29H50O	000986-19-6	68
5		Ergost-7-en-3-ol, (3.beta.)-	400	C28H48O	026047-31-4	55



Data Path : Z:\SVOASRV\HPCHEM1\BNA_M\DATA\BM071918\
Data File : BM015999.D
Acq On : 19 Jul 2018 20:38
Operator : SJ/JU
Sample : J4023-18
Misc :
ALS Vial : 15 Sample Multiplier: 1

Instrument :
BNA_M
ClientSampleId :
DB1M9

Quant Method : Z:\SVOASRV\HPCHEM1\BNA_M\METHODS\SOM-EPA-BM071318MA.M
Quant Title : SVOA CALIBRATION

TIC Library : C:\Database\NIST11.L
TIC Integration Parameters: LSCINT.P

TIC Top Hit name	RT	EstConc	Units	Response	--Internal Standard--			
					#	RT	Resp	Conc
Hexadecenoic acid...	18.40	4.8	ng/ul	266930	4	17.61	1113180	20.0
n-Hexadecanoic acid	18.46	17.9	ng/ul	995718	4	17.61	1113180	20.0
Octadecanoic acid	19.70	3.8	ng/ul	274913	5	21.72	1435360	20.0
1-Octadecanesulph...	21.39	7.0	ng/ul	502181	5	21.72	1435360	20.0
(DEL) Alkane: Str...	22.27	3.4	ng/ul	246992	5	21.72	1435360	20.0
(DEL) Alkane: Str...	24.58	4.5	ng/ul	301051	6	24.11	1322090	20.0
(DEL) Alkane: Str...	26.30	6.8	ng/ul	452062	6	24.11	1322090	20.0
.beta.-Sitosterol	27.34	14.8	ng/ul	975821	6	24.11	1322090	20.0