

Data Path : Z:\svoasrv\HPCHEM1\BNA\_M\Data\BM072123\  
 Data File : BM041046.D  
 Acq On : 22 Jul 2023 09:38  
 Operator : MA/JU  
 Sample : 03540-01  
 Misc :  
 ALS Vial : 36 Sample Multiplier: 1

**Instrument :**  
 BNA\_M  
**ClientSampleId :**  
 A4728

**Manual Integrations**  
**APPROVED**  
 Reviewed By :Yogesh Patel 07/24/2023  
 Supervised By :mohammad ahmed 07/24/2023

Quant Time: Jul 22 22:35:32 2023  
 Quant Method : Z:\svoasrv\HPCHEM1\BNA\_M\Methods\SFAM-EPA-SIM-BM071923.M  
 Quant Title : ASP BNA STANDARDS FOR 5 POINT CALIBRATION  
 QLast Update : Sat Jul 22 22:33:48 2023  
 Response via : Initial Calibration

Compound	R.T.	QIon	Response	Conc	Units	Dev(Min)
-----						
Internal Standards						
1) 1,4-Dichlorobenzene-d4	7.853	152	4685	0.400	ng/ul	0.00
4) Naphthalene-d8	10.658	136	16146	0.400	ng/ul #	0.00
9) Acenaphthene-d10	14.509	164	9397	0.400	ng/ul	0.00
13) Phenanthrene-d10	17.265	188	21469	0.400	ng/ul #	0.00
17) Chrysene-d12	21.460	240	13877	0.400	ng/ul	0.00
23) Perylene-d12	23.851	264	12374	0.400	ng/ul #	0.00
System Monitoring Compounds						
3) 1,4-Dioxane-d8	3.275	96	17179	2.230	ng/ul	0.00
6) 2-Methylnaphthalene-d10	12.253	152	7660	0.356	ng/ul	-0.01
18) Fluoranthene-d10	19.297	212	16734	0.287	ng/ul	0.00
Target Compounds						
						Qvalue
5) Naphthalene	10.708	128	16320	0.370	ng/ul	99
7) 2-Methylnaphthalene	12.330	142	5980	0.247	ng/ul	96
8) 1-Methylnaphthalene	12.550	142	5981	0.232	ng/ul	98
10) Acenaphthylene	14.231	152	13630	0.346	ng/ul	99
11) Acenaphthene	14.574	153	28669	0.826	ng/ul	96
12) Fluorene	15.564	166	38098	1.061	ng/ul	97
15) Phenanthrene	17.308	178	544638	8.487	ng/ul	98
16) Anthracene	17.396	178	95537	1.911	ng/ul	97
19) Fluoranthene	19.329	202	681706	9.515	ng/ul#	92
20) Pyrene	19.692	202	308957	4.221	ng/ul#	92
21) Benzo(a)anthracene	21.442	228	245806	5.815	ng/ul	100
22) Chrysene	21.495	228	219341	4.539	ng/ul	98
24) Benzo(b)fluoranthene	23.120	252	226432	4.768	ng/ul	83
25) Benzo(k)fluoranthene	23.167	252	79412m	1.760	ng/ul	
26) Benzo(a)pyrene	23.743	252	35548	0.867	ng/ul#	82
27) Indeno(1,2,3-cd)pyrene	26.314	276	46205	0.849	ng/ul#	88
28) Dibenzo(a,h)anthracene	26.324	278	25750	0.625	ng/ul	93
29) Benzo(g,h,i)perylene	27.075	276	2672	0.053	ng/ul#	50
-----						

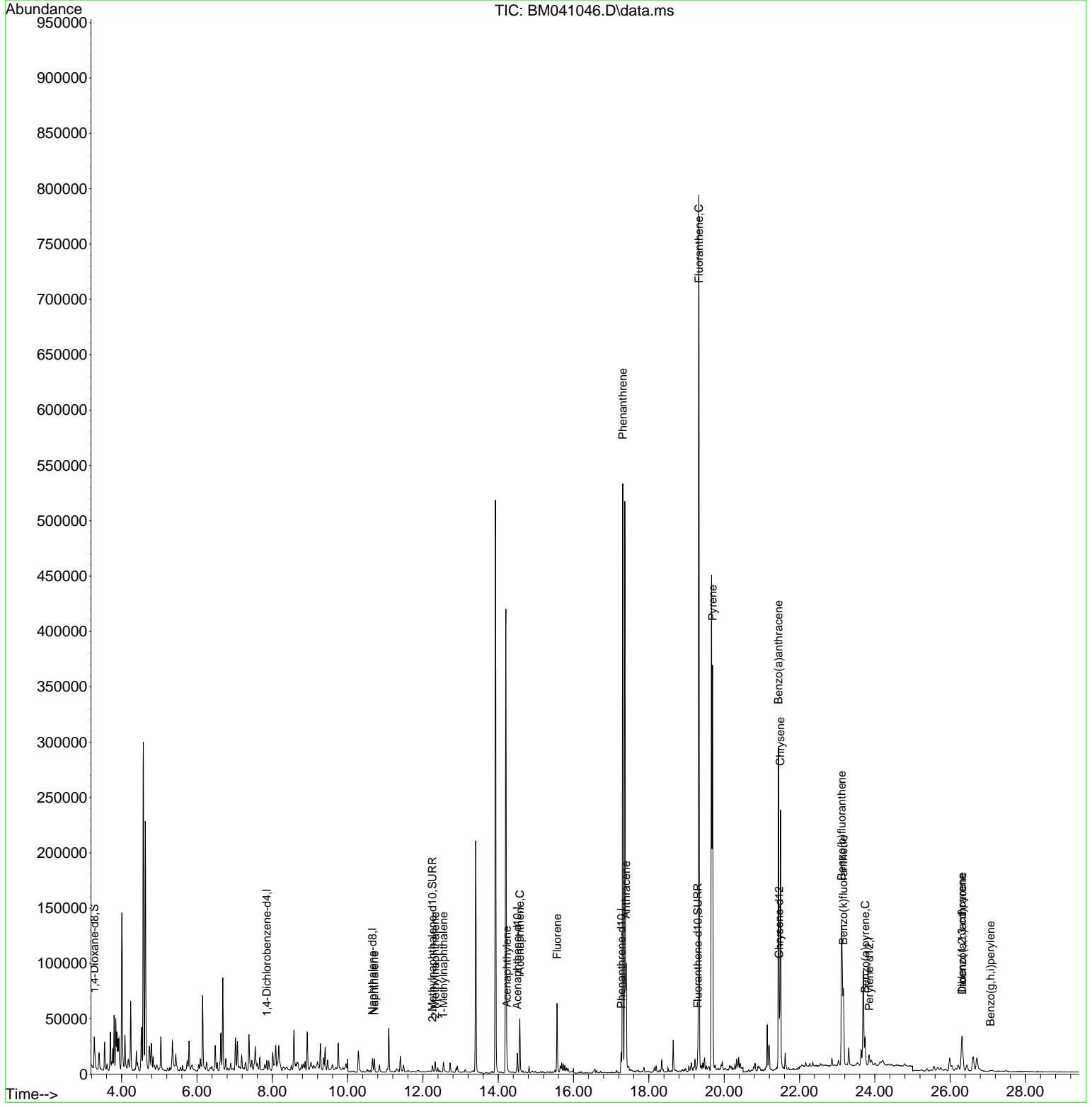
(#) = qualifier out of range (m) = manual integration (+) = signals summed

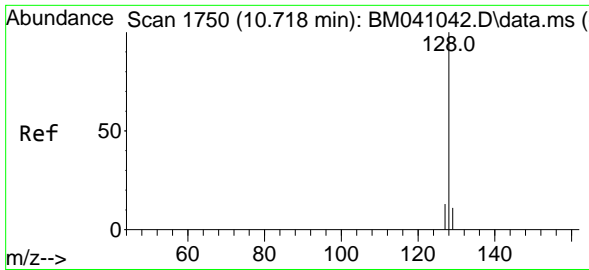
Data Path : Z:\svoasrv\HPCHEM1\BNA\_M\Data\BM072123\  
 Data File : BM041046.D  
 Acq On : 22 Jul 2023 09:38  
 Operator : MA/JU  
 Sample : 03540-01  
 Misc :  
 ALS Vial : 36 Sample Multiplier: 1

**Instrument :**  
 BNA\_M  
**ClientSampleId :**  
 A4728

Quant Time: Jul 22 22:35:32 2023  
 Quant Method : Z:\svoasrv\HPCHEM1\BNA\_M\Methods\SFAM-EPA-SIM-BM071923.M  
 Quant Title : ASP BNA STANDARDS FOR 5 POINT CALIBRATION  
 QLast Update : Sat Jul 22 22:33:48 2023  
 Response via : Initial Calibration

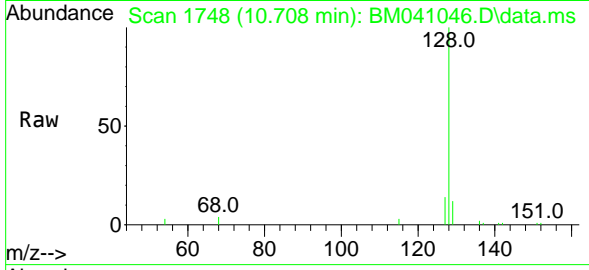
**Manual Integrations**  
**APPROVED**  
 Reviewed By :Yogesh Patel 07/24/2023  
 Supervised By :mohammad ahmed 07/24/2023





#5  
 Naphthalene  
 Concen: 0.370 ng/u1  
 RT: 10.708 min Scan# 1750  
 Delta R.T. -0.011 min  
 Lab File: BM041046.D  
 Acq: 22 Jul 2023 09:38

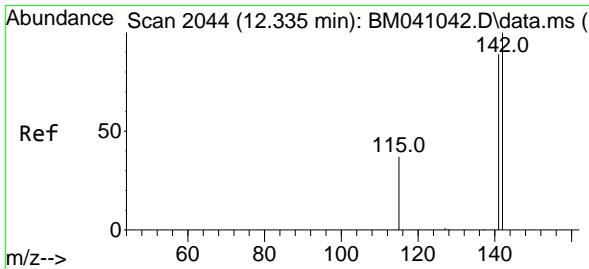
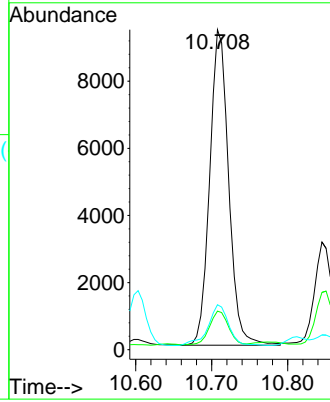
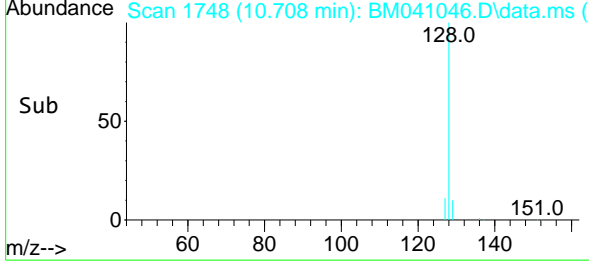
Instrument :  
 BNA\_M  
 ClientSampleId :  
 A4728



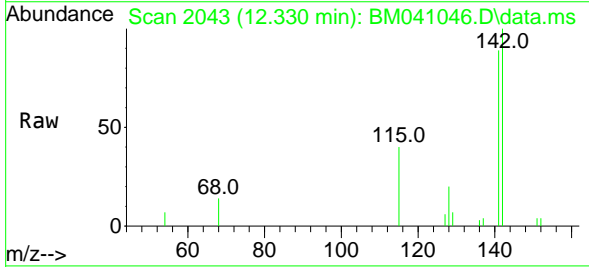
Tgt Ion:128 Resp: 16320  
 Ion Ratio Lower Upper  
 128 100  
 129 12.1 9.8 14.8  
 127 14.1 11.0 16.4

Manual Integrations  
 APPROVED

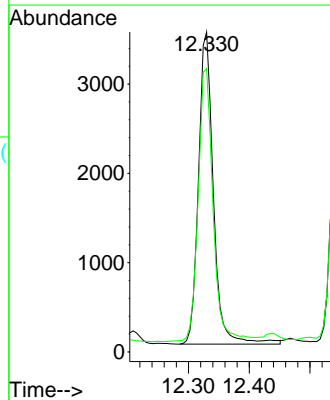
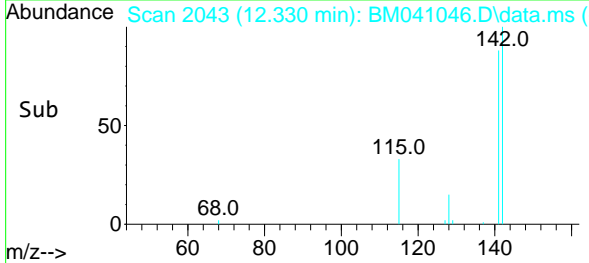
Reviewed By :Yogesh Patel 07/24/2023  
 Supervised By :mohammad ahmed 07/24/2023

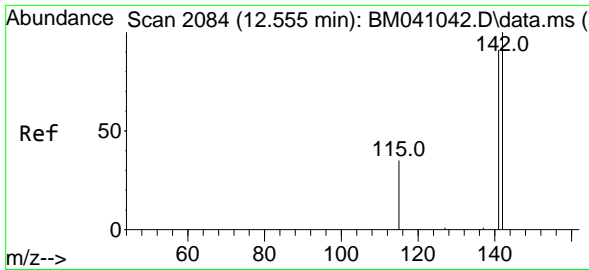


#7  
 2-Methylnaphthalene  
 Concen: 0.247 ng/u1  
 RT: 12.330 min Scan# 2043  
 Delta R.T. -0.005 min  
 Lab File: BM041046.D  
 Acq: 22 Jul 2023 09:38



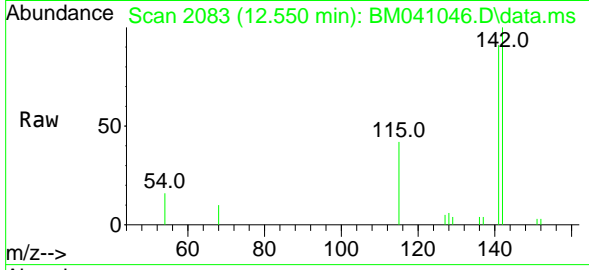
Tgt Ion:142 Resp: 5980  
 Ion Ratio Lower Upper  
 142 100  
 141 87.8 73.2 109.8





#8  
 1-Methylnaphthalene  
 Concen: 0.232 ng/u1  
 RT: 12.550 min Scan# 2083  
 Delta R.T. -0.005 min  
 Lab File: BM041046.D  
 Acq: 22 Jul 2023 09:38

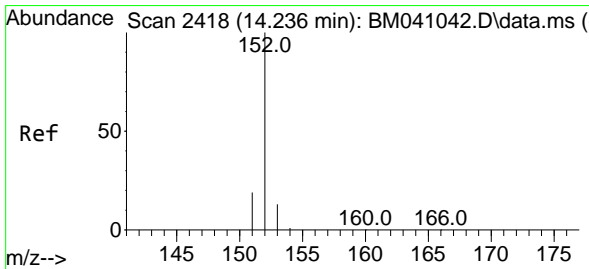
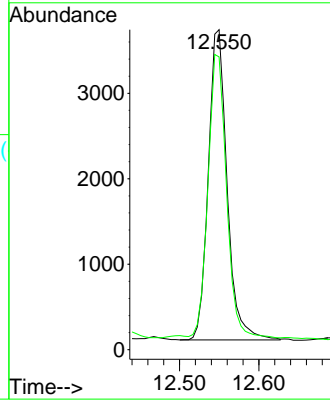
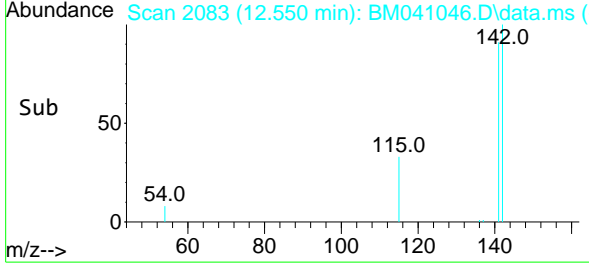
Instrument :  
 BNA\_M  
 ClientSampleId :  
 A4728



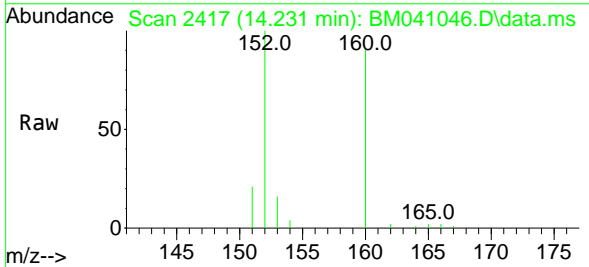
Tgt Ion:142 Resp: 598  
 Ion Ratio Lower Upper  
 142 100  
 141 90.0 73.4 110.2

Manual Integrations  
 APPROVED

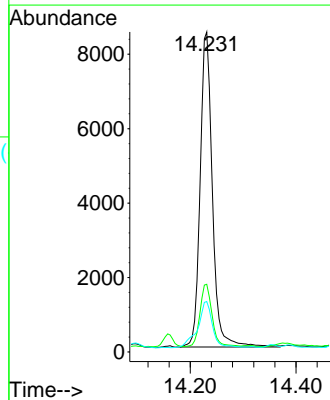
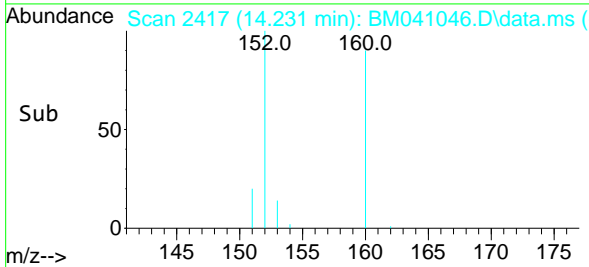
Reviewed By :Yogesh Patel 07/24/2023  
 Supervised By :mohammad ahmed 07/24/2023

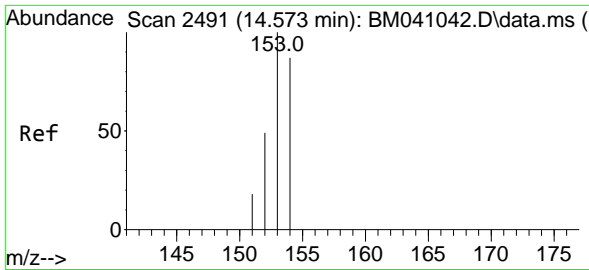


#10  
 Acenaphthylene  
 Concen: 0.346 ng/u1  
 RT: 14.231 min Scan# 2417  
 Delta R.T. -0.004 min  
 Lab File: BM041046.D  
 Acq: 22 Jul 2023 09:38



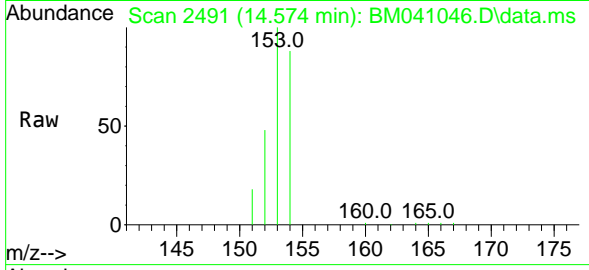
Tgt Ion:152 Resp: 13630  
 Ion Ratio Lower Upper  
 152 100  
 151 21.1 16.8 25.2  
 153 15.7 11.6 17.4





#11  
 Acenaphthene  
 Concen: 0.826 ng/u1  
 RT: 14.574 min Scan# 2491  
 Delta R.T. 0.000 min  
 Lab File: BM041046.D  
 Acq: 22 Jul 2023 09:38

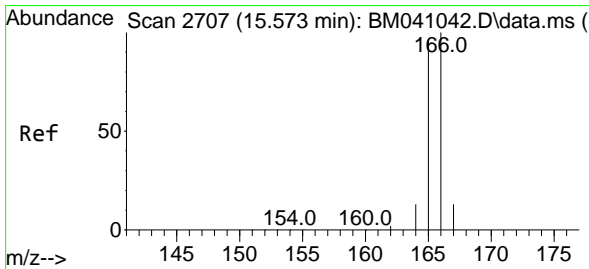
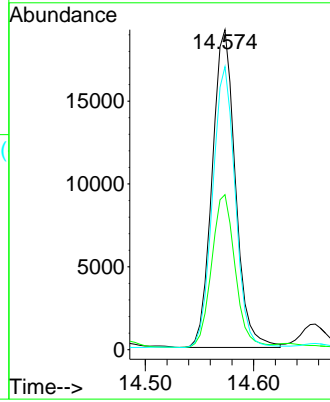
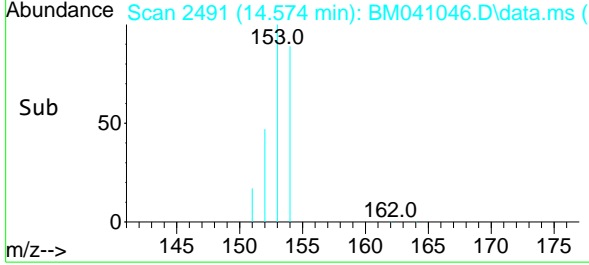
Instrument :  
 BNA\_M  
 ClientSampleId :  
 A4728



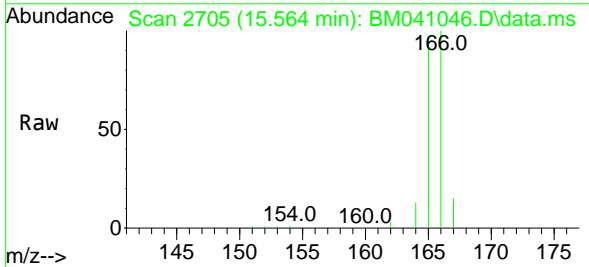
Tgt Ion:153 Resp: 28669  
 Ion Ratio Lower Upper  
 153 100  
 152 48.5 41.0 61.6  
 154 88.4 68.2 102.2

Manual Integrations  
 APPROVED

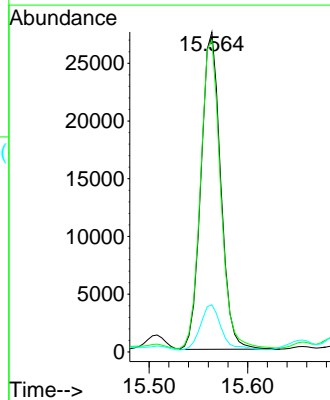
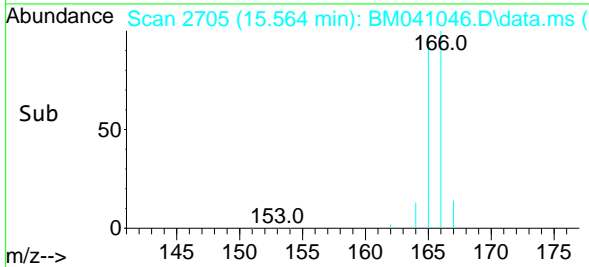
Reviewed By :Yogesh Patel 07/24/2023  
 Supervised By :mohammad ahmed 07/24/2023

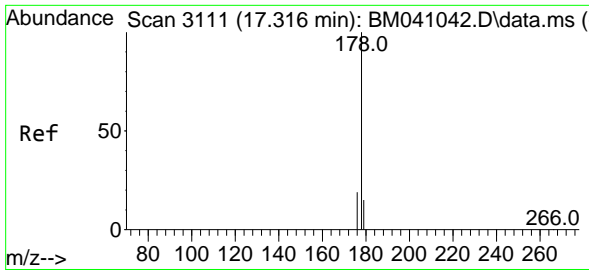


#12  
 Fluorene  
 Concen: 1.061 ng/u1  
 RT: 15.564 min Scan# 2705  
 Delta R.T. -0.009 min  
 Lab File: BM041046.D  
 Acq: 22 Jul 2023 09:38



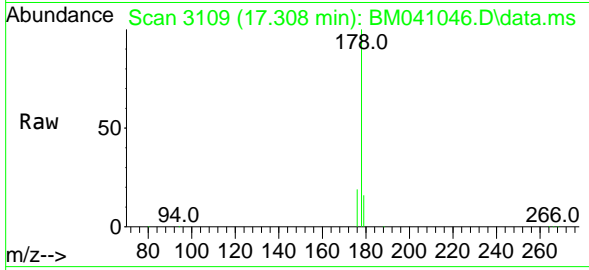
Tgt Ion:166 Resp: 38098  
 Ion Ratio Lower Upper  
 166 100  
 165 97.4 80.3 120.5  
 167 14.7 11.7 17.5





#15  
 Phenanthrene  
 Concen: 8.487 ng/u1  
 RT: 17.308 min Scan# 3111  
 Delta R.T. -0.008 min  
 Lab File: BM041046.D  
 Acq: 22 Jul 2023 09:38

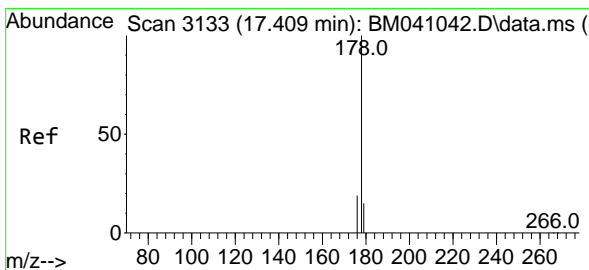
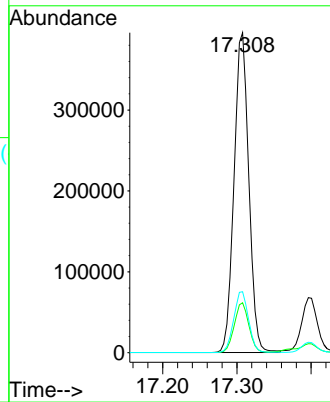
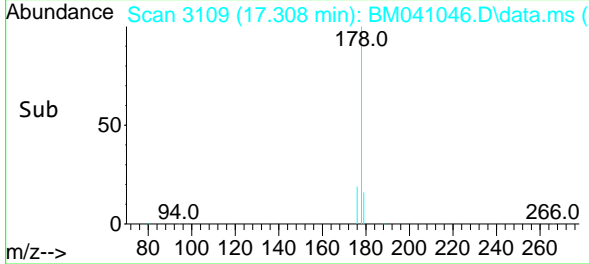
Instrument :  
 BNA\_M  
 ClientSampleId :  
 A4728



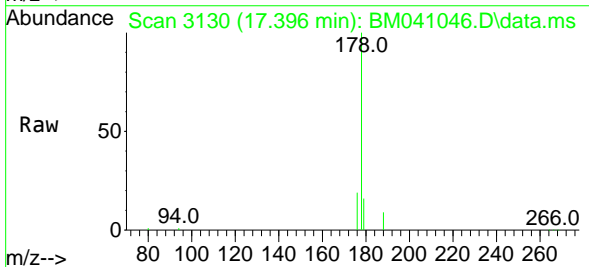
Tgt Ion:178 Resp: 544638  
 Ion Ratio Lower Upper  
 178 100  
 179 15.6 13.0 19.6  
 176 19.0 16.2 24.4

Manual Integrations  
 APPROVED

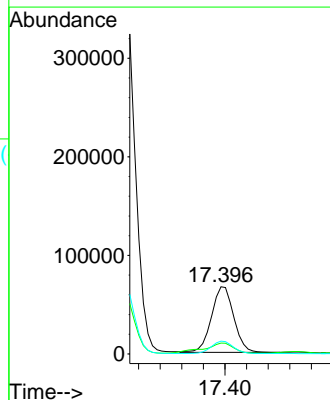
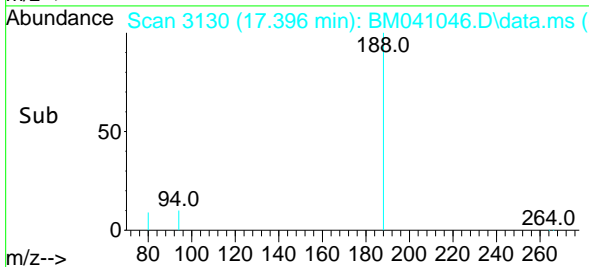
Reviewed By :Yogesh Patel 07/24/2023  
 Supervised By :mohammad ahmed 07/24/2023

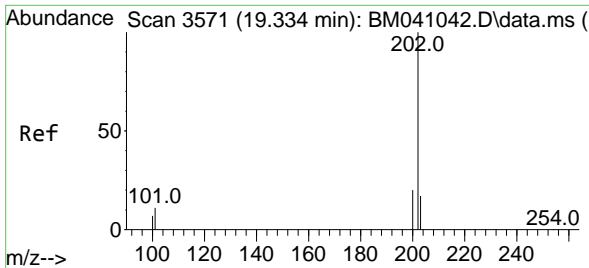


#16  
 Anthracene  
 Concen: 1.911 ng/u1  
 RT: 17.396 min Scan# 3130  
 Delta R.T. -0.012 min  
 Lab File: BM041046.D  
 Acq: 22 Jul 2023 09:38



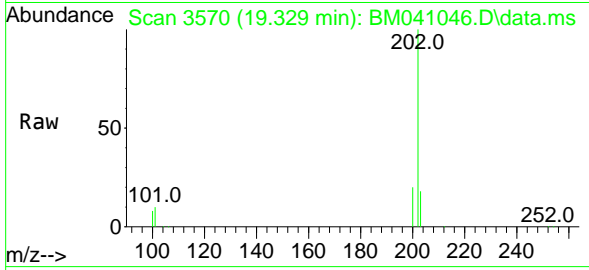
Tgt Ion:178 Resp: 95537  
 Ion Ratio Lower Upper  
 178 100  
 179 16.3 13.7 20.5  
 176 19.0 16.4 24.6





#19  
 Fluoranthene  
 Concen: 9.515 ng/uI  
 RT: 19.329 min Scan# 3570  
 Delta R.T. -0.004 min  
 Lab File: BM041046.D  
 Acq: 22 Jul 2023 09:38

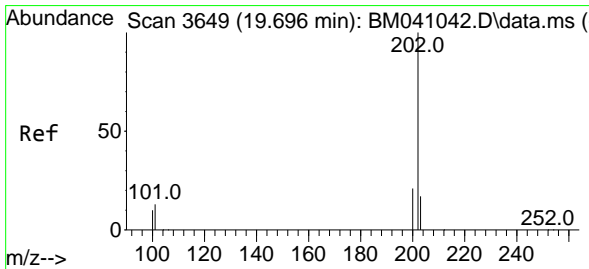
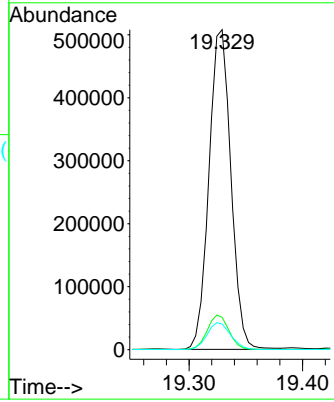
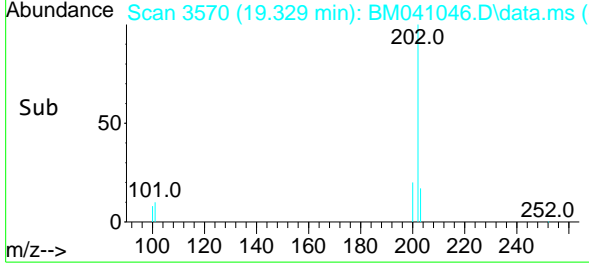
Instrument : BNA\_M  
 Client Sample Id : A4728



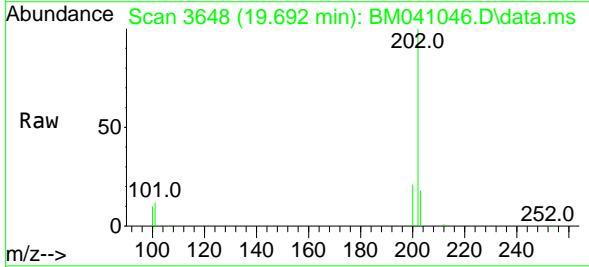
Tgt Ion:202 Resp: 681700  
 Ion Ratio Lower Upper  
 202 100  
 101 10.1 11.0 16.4#  
 100 8.0 8.3 12.5#

Manual Integrations  
 APPROVED

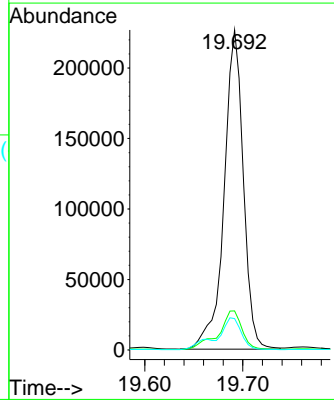
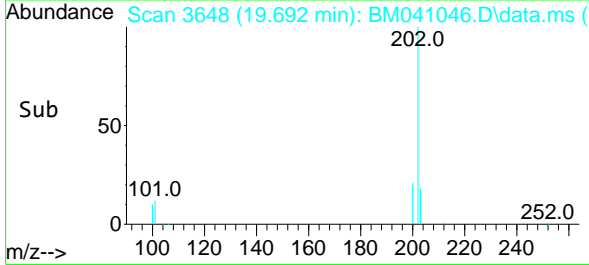
Reviewed By :Yogesh Patel 07/24/2023  
 Supervised By :mohammad ahmed 07/24/2023

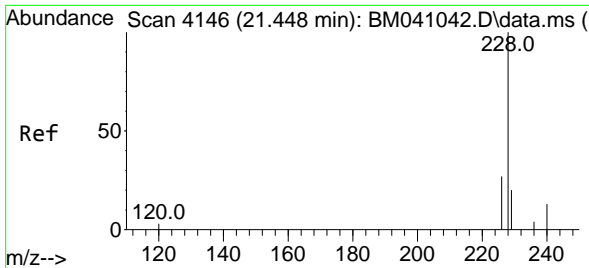


#20  
 Pyrene  
 Concen: 4.221 ng/uI  
 RT: 19.692 min Scan# 3648  
 Delta R.T. -0.004 min  
 Lab File: BM041046.D  
 Acq: 22 Jul 2023 09:38



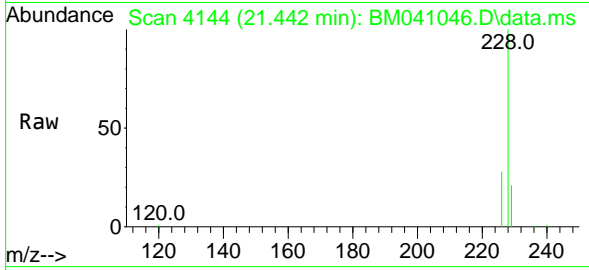
Tgt Ion:202 Resp: 308957  
 Ion Ratio Lower Upper  
 202 100  
 101 12.2 12.5 18.7#  
 100 9.8 10.0 15.0#





#21  
 Benzo(a)anthracene  
 Concen: 5.815 ng/u1  
 RT: 21.442 min Scan# 4114  
 Delta R.T. -0.006 min  
 Lab File: BM041046.D  
 Acq: 22 Jul 2023 09:38

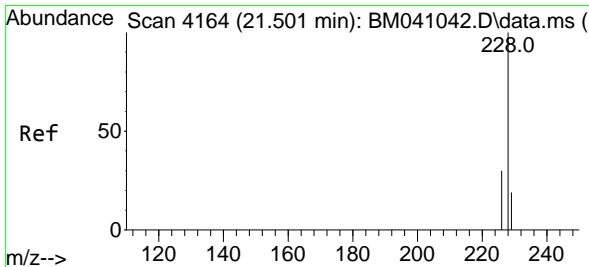
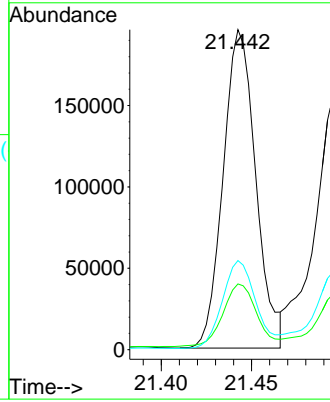
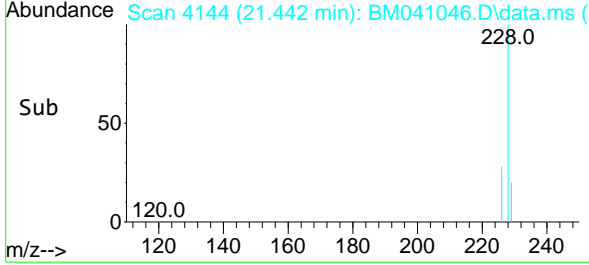
Instrument :  
 BNA\_M  
 ClientSampleId :  
 A4728



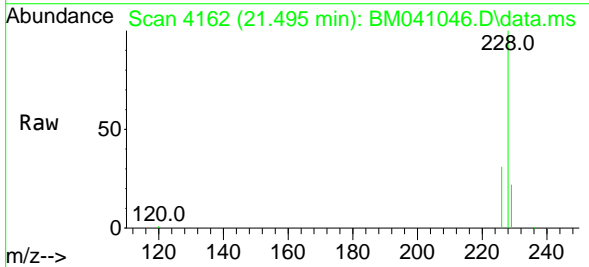
Tgt Ion:228 Resp: 245800  
 Ion Ratio Lower Upper  
 228 100  
 229 20.6 16.2 24.4  
 226 27.8 22.3 33.5

Manual Integrations  
 APPROVED

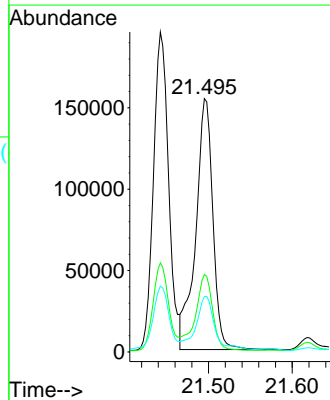
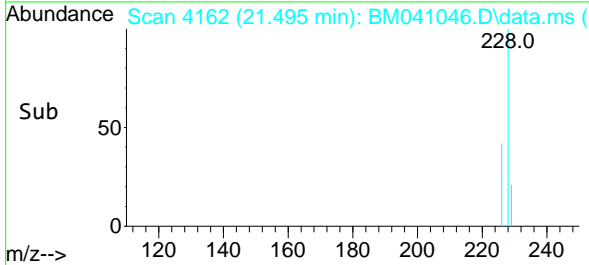
Reviewed By :Yogesh Patel 07/24/2023  
 Supervised By :mohammad ahmed 07/24/2023



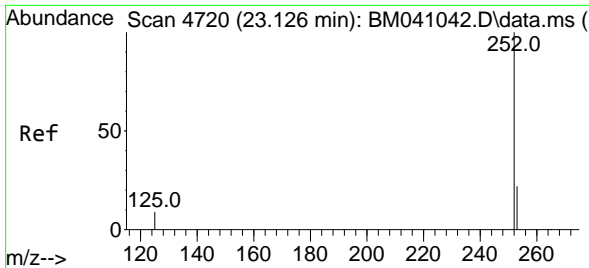
#22  
 Chrysene  
 Concen: 4.539 ng/u1  
 RT: 21.495 min Scan# 4162  
 Delta R.T. -0.006 min  
 Lab File: BM041046.D  
 Acq: 22 Jul 2023 09:38



Tgt Ion:228 Resp: 219341  
 Ion Ratio Lower Upper  
 228 100  
 226 30.6 24.6 37.0  
 229 21.8 16.1 24.1

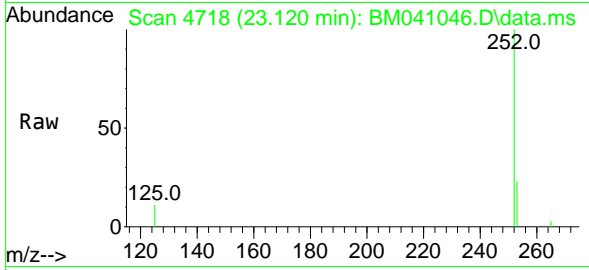






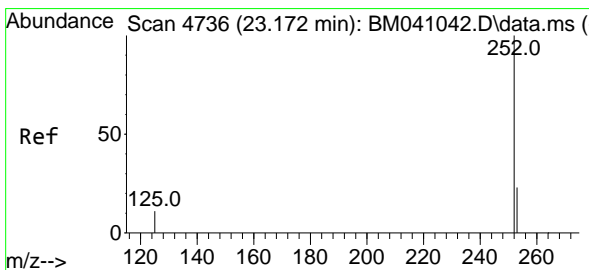
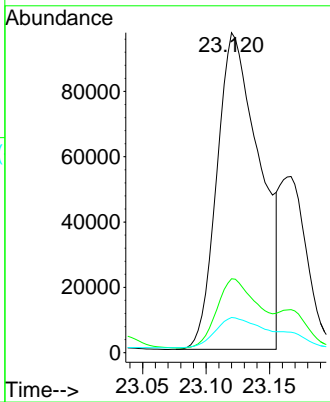
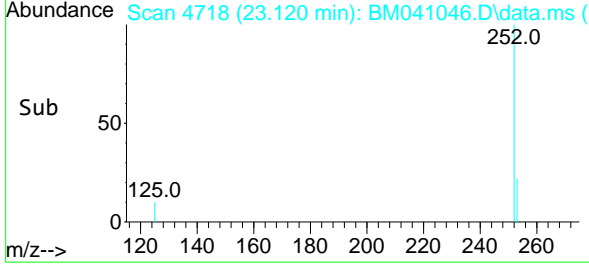
#24  
 Benzo(b)fluoranthene  
 Concen: 4.768 ng/ul  
 RT: 23.120 min Scan# 4718  
 Delta R.T. -0.006 min  
 Lab File: BM041046.D  
 Acq: 22 Jul 2023 09:38

Instrument : BNA\_M  
 ClientSampleId : A4728

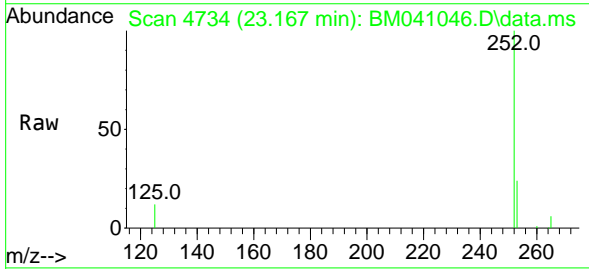


Tgt Ion:252 Resp: 22643  
 Ion Ratio Lower Upper  
 252 100  
 253 23.1 0.0 57.4  
 125 11.0 0.0 45.2

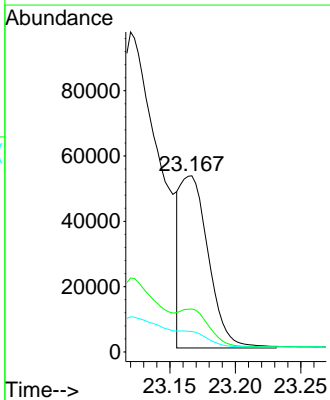
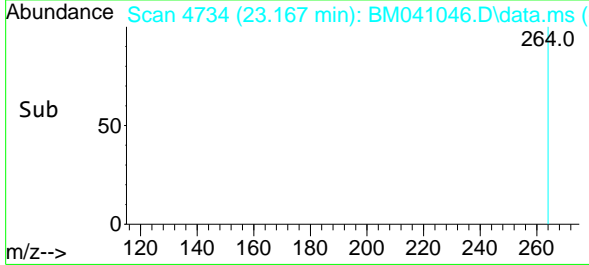
Manual Integrations  
**APPROVED**  
 Reviewed By :Yogesh Patel 07/24/2023  
 Supervised By :mohammad ahmed 07/24/2023

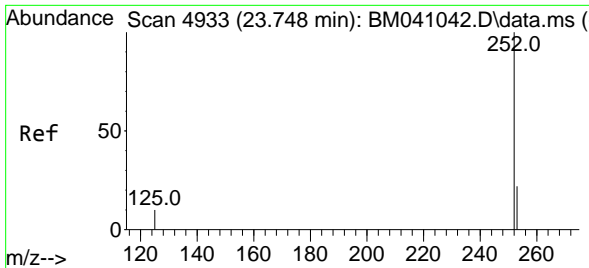


#25  
 Benzo(k)fluoranthene  
 Concen: 1.760 ng/ul m  
 RT: 23.167 min Scan# 4734  
 Delta R.T. -0.006 min  
 Lab File: BM041046.D  
 Acq: 22 Jul 2023 09:38



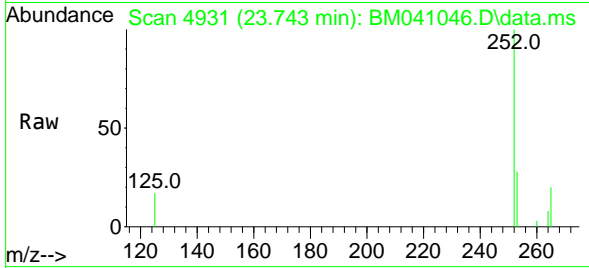
Tgt Ion:252 Resp: 79412  
 Ion Ratio Lower Upper  
 252 100  
 253 24.4 23.3 34.9  
 125 11.7 18.2 27.2#





#26  
 Benzo(a)pyrene  
 Concen: 0.867 ng/u1  
 RT: 23.743 min Scan# 4931  
 Delta R.T. -0.006 min  
 Lab File: BM041046.D  
 Acq: 22 Jul 2023 09:38

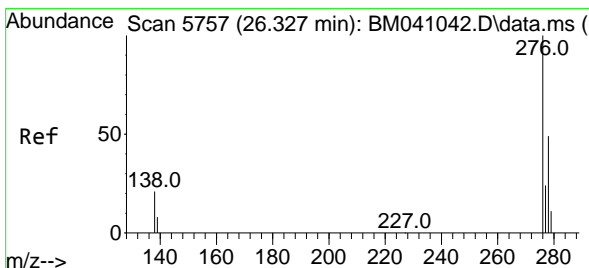
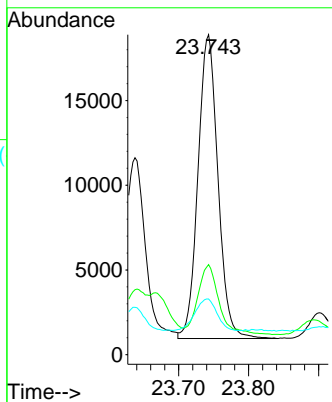
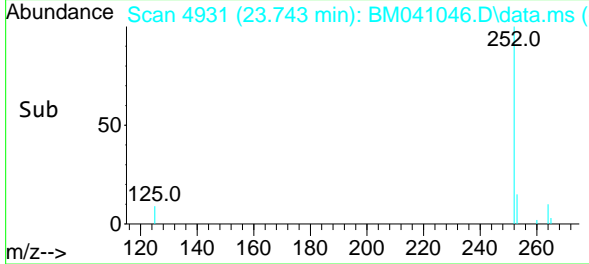
Instrument :  
 BNA\_M  
 ClientSampleId :  
 A4728



Tgt Ion:252 Resp: 3554  
 Ion Ratio Lower Upper  
 252 100  
 253 28.2 28.2 42.2#  
 125 17.4 25.2 37.8#

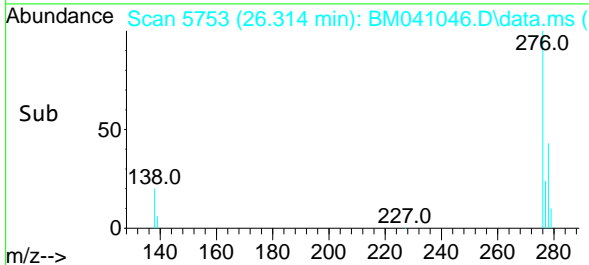
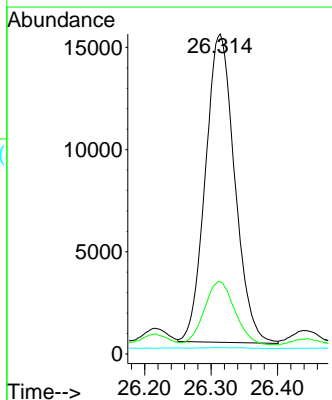
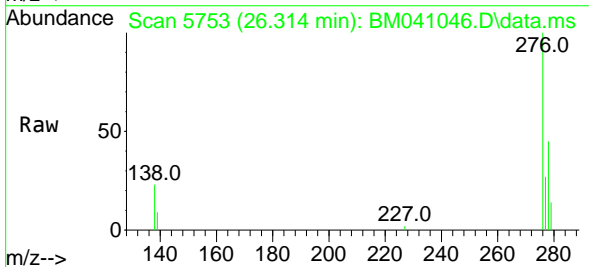
Manual Integrations  
 APPROVED

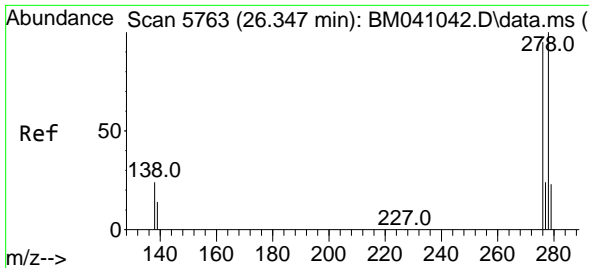
Reviewed By :Yogesh Patel 07/24/2023  
 Supervised By :mohammad ahmed 07/24/2023



#27  
 Indeno(1,2,3-cd)pyrene  
 Concen: 0.849 ng/u1  
 RT: 26.314 min Scan# 5753  
 Delta R.T. -0.013 min  
 Lab File: BM041046.D  
 Acq: 22 Jul 2023 09:38

Tgt Ion:276 Resp: 46205  
 Ion Ratio Lower Upper  
 276 100  
 138 21.5 22.3 33.5#  
 227 0.3 0.0 0.0#





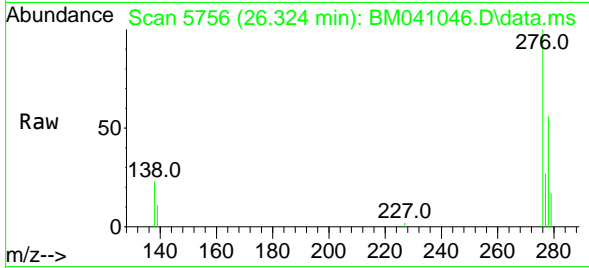
#28  
 Dibenzo(a,h)anthracene  
 Concen: 0.625 ng/ul  
 RT: 26.324 min Scan# 51  
 Delta R.T. -0.023 min  
 Lab File: BM041046.D  
 Acq: 22 Jul 2023 09:38

Instrument :

BNA\_M

ClientSampleId :

A4728

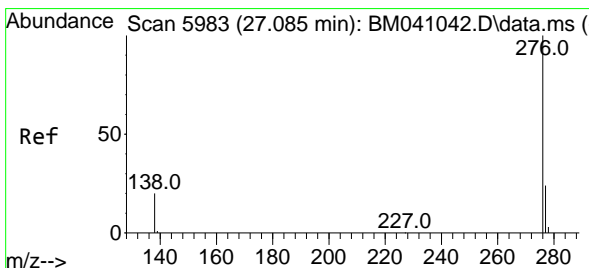
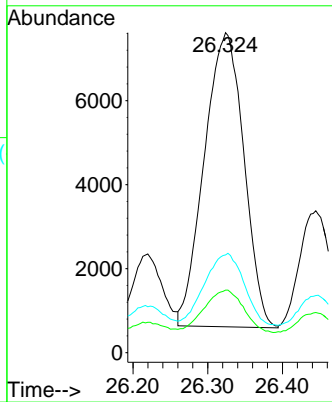
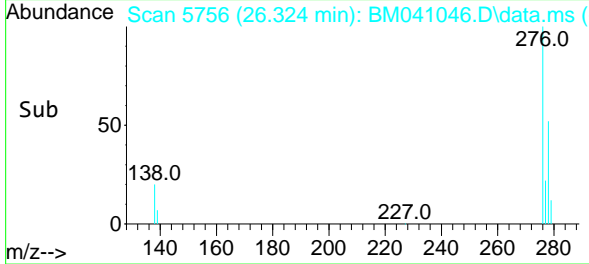


Tgt Ion:278 Resp: 25750  
 Ion Ratio Lower Upper  
 278 100  
 139 19.5 19.2 28.8  
 279 30.6 27.0 40.6

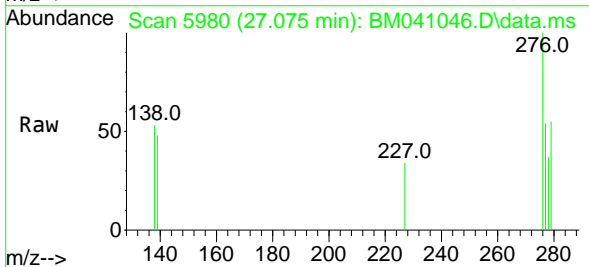
Manual Integrations

APPROVED

Reviewed By :Yogesh Patel 07/24/2023  
 Supervised By :mohammad ahmed 07/24/2023



#29  
 Benzo(g,h,i)perylene  
 Concen: 0.053 ng/ul  
 RT: 27.075 min Scan# 5980  
 Delta R.T. -0.010 min  
 Lab File: BM041046.D  
 Acq: 22 Jul 2023 09:38



Tgt Ion:276 Resp: 2672  
 Ion Ratio Lower Upper  
 276 100  
 138 53.1 22.6 34.0#  
 277 54.0 21.2 31.8#

