

Data Path : Z:\svoasrv\HPCHEM1\BNA_M\Data\BM072621\
 Data File : BM031185.D
 Acq On : 27 Jul 2021 05:30
 Operator : CG/JU
 Sample : M3091-21
 Misc :
 ALS Vial : 31 Sample Multiplier: 1

Instrument :
 BNA_M
ClientSampled :
 C0059

Manual Integrations
APPROVED
 mohammad
 7/27/2021 12:09:56 PM

Quant Time: Jul 27 06:24:09 2021
 Quant Method : Z:\SVOASRV\HPCHEM1\BNA_M\METHODS\SFAM-EPA-SIM-BM072221.M
 Quant Title : ASP BNA STANDARDS FOR 5 POINT CALIBRATION
 QLast Update : Thu Jul 22 01:52:16 2021
 Response via : Initial Calibration

Compound	R.T.	QIon	Response	Conc	Units	Dev(Min)
Internal Standards						
1) 1,4-Dichlorobenzene-d4	7.628	152	1247	0.400	ng/ul	-0.01
4) Naphthalene-d8	10.391	136	5165	0.400	ng/ul	-0.01
9) Acenaphthene-d10	14.258	164	4229	0.400	ng/ul	0.00
13) Phenanthrene-d10	17.002	188	9331m	0.400	ng/ul	-0.01
17) Chrysene-d12	21.188	240	8986	0.400	ng/ul	-0.01
23) Perylene-d12	23.355	264	8991	0.400	ng/ul	#-0.02
System Monitoring Compounds						
3) 1,4-Dioxane-d8	3.210	96	5992	4.574	ng/ul	0.00
6) 2-Methylnaphthalene-d10	11.983	152	3006	0.331	ng/ul	-0.01
18) Fluoranthene-d10	19.031	212	10831	0.395	ng/ul	-0.01
Target Compounds						
						Qvalue
5) Naphthalene	10.441	128	712	0.046	ng/ul#	82
7) 2-Methylnaphthalene	12.060	142	233	0.021	ng/ul	97
11) Acenaphthene	14.349	153	1209	0.079	ng/ul#	30
15) Phenanthrene	17.044	178	687	0.023	ng/ul#	77
19) Fluoranthene	19.062	202	827	0.023	ng/ul#	65

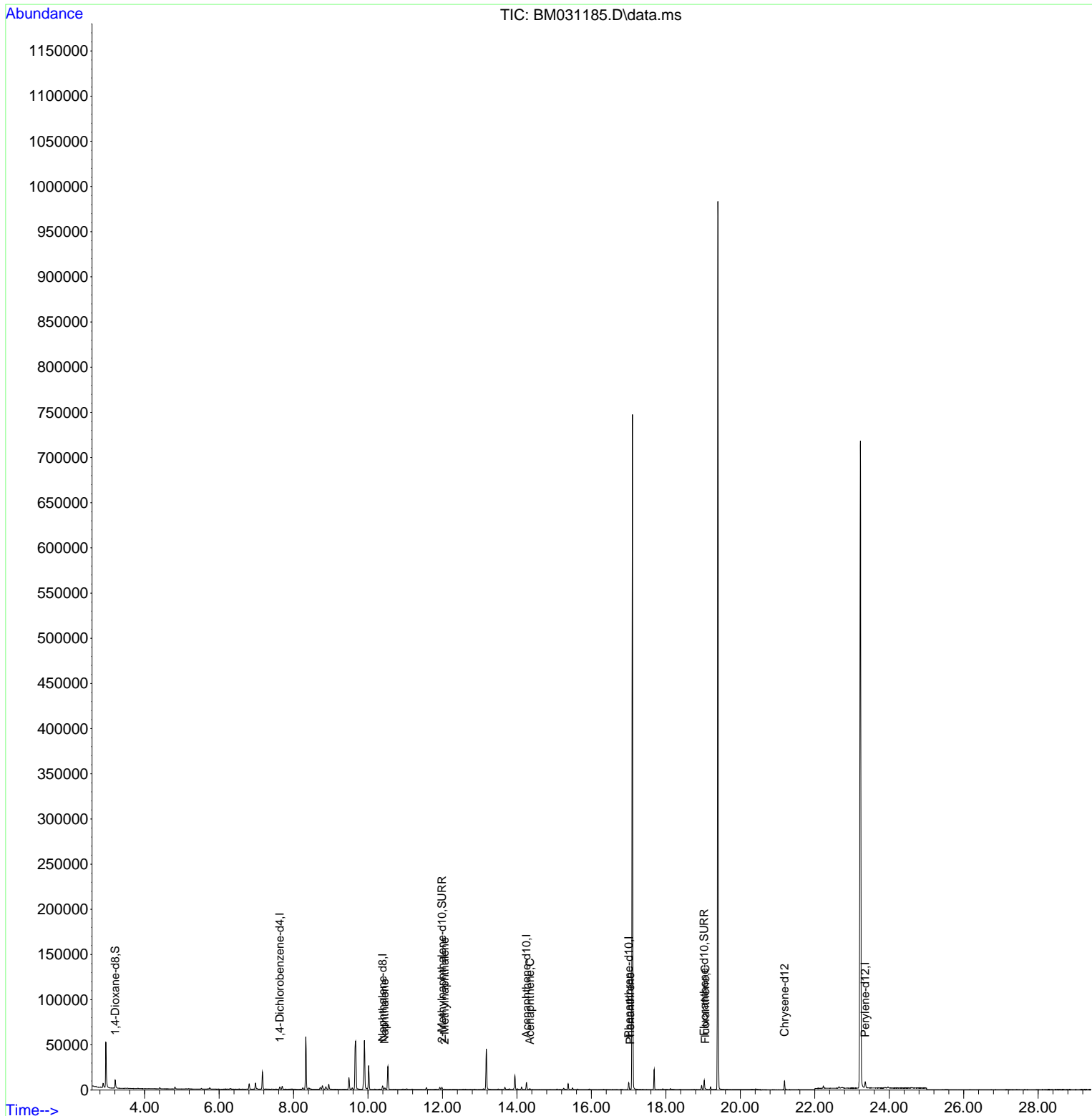
(#) = qualifier out of range (m) = manual integration (+) = signals summed

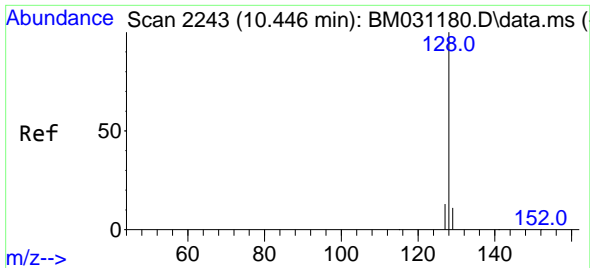
Data Path : Z:\svoasrv\HPCHEM1\BNA_M\Data\BM072621\
 Data File : BM031185.D
 Acq On : 27 Jul 2021 05:30
 Operator : CG/JU
 Sample : M3091-21
 Misc :
 ALS Vial : 31 Sample Multiplier: 1

Instrument :
 BNA_M
ClientSampleId :
 C0059

Manual Integrations
APPROVED
 mohammad
 7/27/2021 12:09:56 PM

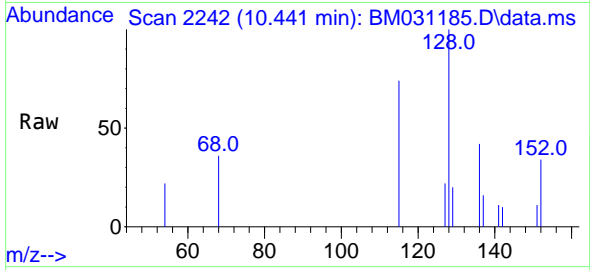
Quant Time: Jul 27 06:24:09 2021
 Quant Method : Z:\SVOASRV\HPCHEM1\BNA_M\METHODS\SFAM-EPA-SIM-BM072221.M
 Quant Title : ASP BNA STANDARDS FOR 5 POINT CALIBRATION
 QLast Update : Thu Jul 22 01:52:16 2021
 Response via : Initial Calibration





#5
 Naphthalene
 Concen: 0.046 ng/u1
 RT: 10.441 min Scan# 2242
 Delta R.T. -0.015 min
 Lab File: BM031185.D
 Acq: 27 Jul 2021 05:30

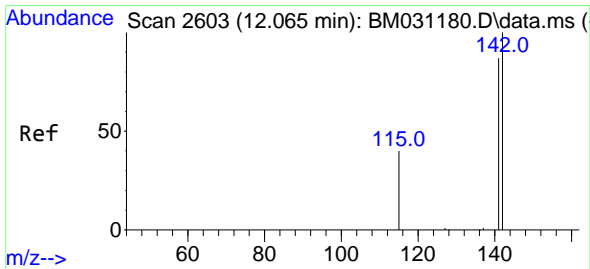
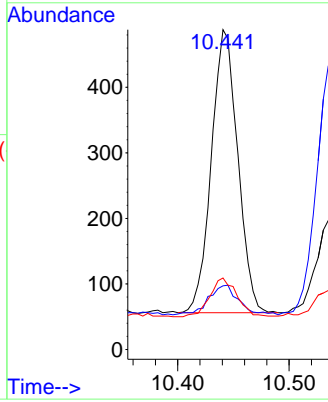
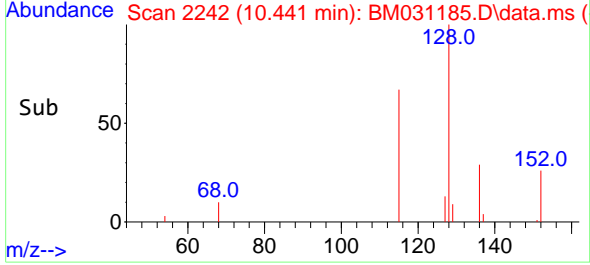
Instrument :
 BNA_M
 ClientSampled :
 C0059



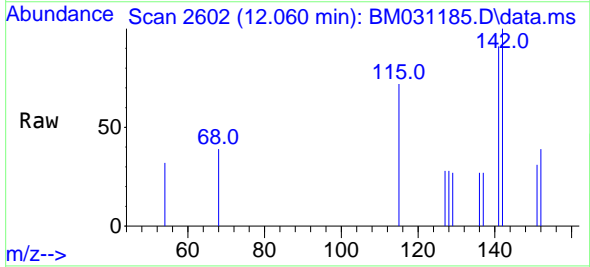
Tgt Ion:128 Resp: 712
 Ion Ratio Lower Upper
 128 100
 129 19.9 10.2 15.4#
 127 22.3 11.8 17.8#

Manual Integrations
 APPROVED

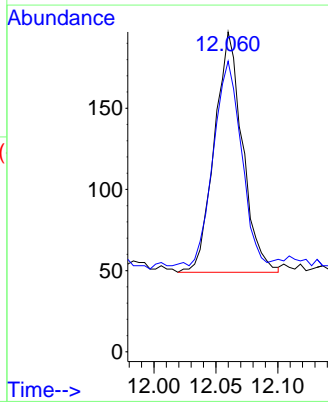
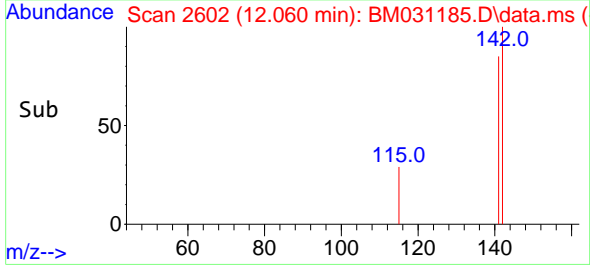
mohammad
 7/27/2021 12:09:56 PM

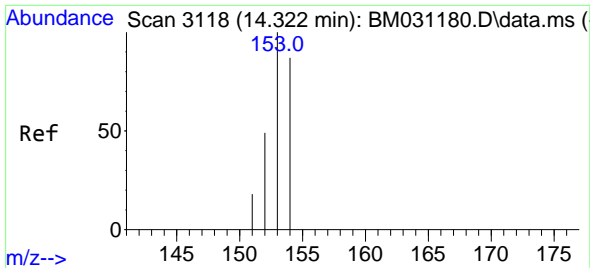


#7
 2-Methylnaphthalene
 Concen: 0.021 ng/u1
 RT: 12.060 min Scan# 2602
 Delta R.T. -0.010 min
 Lab File: BM031185.D
 Acq: 27 Jul 2021 05:30



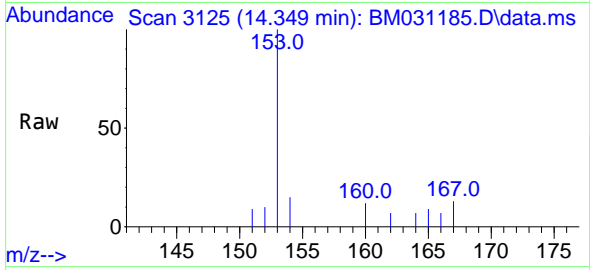
Tgt Ion:142 Resp: 233
 Ion Ratio Lower Upper
 142 100
 141 86.3 71.5 107.3





#11
 Acenaphthene
 Concen: 0.079 ng/u1
 RT: 14.349 min Scan# 3125
 Delta R.T. 0.019 min
 Lab File: BM031185.D
 Acq: 27 Jul 2021 05:30

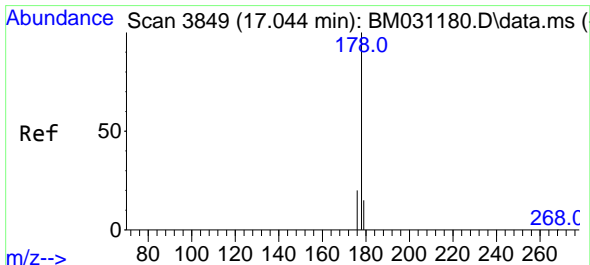
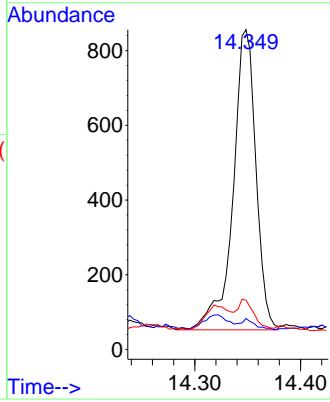
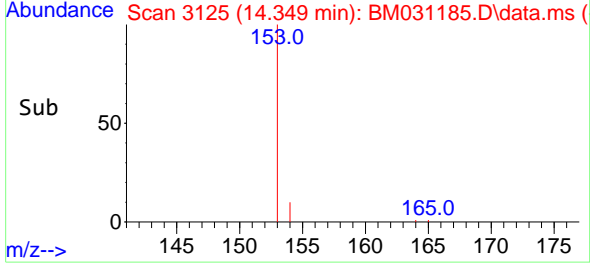
Instrument :
 BNA_M
ClientSampled :
 C0059



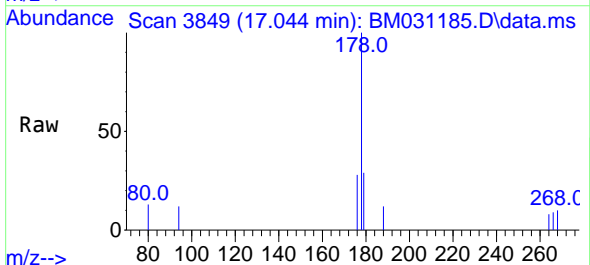
Tgt Ion:153 Resp: 1209

Ion	Ratio	Lower	Upper
153	100		
152	9.7	39.4	59.2#
154	15.4	68.2	102.4#

Manual Integrations
APPROVED
 mohammad
 7/27/2021 12:09:56 PM

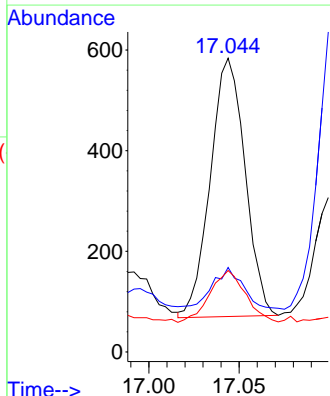
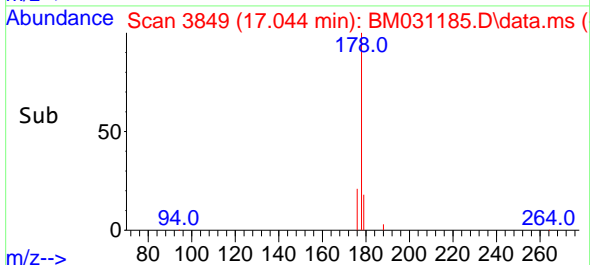


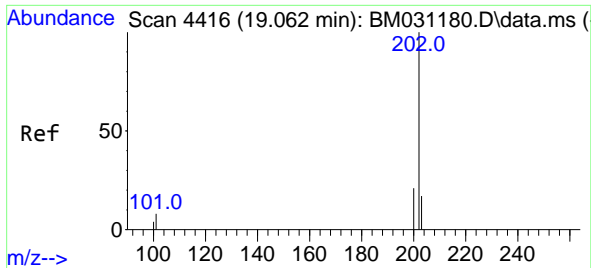
#15
 Phenanthrene
 Concen: 0.023 ng/u1
 RT: 17.044 min Scan# 3849
 Delta R.T. -0.011 min
 Lab File: BM031185.D
 Acq: 27 Jul 2021 05:30



Tgt Ion:178 Resp: 687

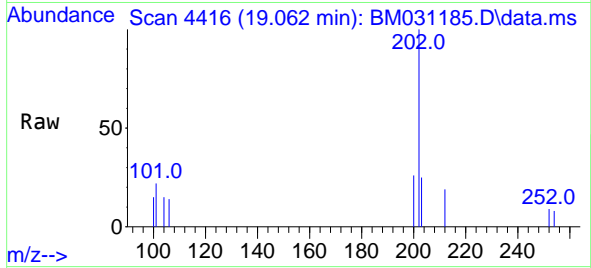
Ion	Ratio	Lower	Upper
178	100		
179	28.8	13.3	19.9#
176	27.7	15.4	23.2#





#19
 Fluoranthene
 Concen: 0.023 ng/ul
 RT: 19.062 min Scan# 4416
 Delta R.T. -0.012 min
 Lab File: BM031185.D
 Acq: 27 Jul 2021 05:30

Instrument :
 BNA_M
 ClientSampled :
 C0059



Tgt Ion: 202 Resp: 827

Ion	Ratio	Lower	Upper
202	100		
101	21.8	6.0	9.0#
100	15.4	4.8	7.2#

Manual Integrations
 APPROVED

mohammad
 7/27/2021 12:09:56 PM

