

Data Path : Z:\SVOASRV\HPCHEM1\BNA M\DATA\BM080618\
 Data File : BM016218.D
 Acq On : 07 Aug 2018 08:02
 Operator : SJ/JU
 Sample : J4332-04
 Misc :
 ALS Vial : 25 Sample Multiplier: 1

Instrument :
 BNA_M
 ClientSampleId :

Quant Time: Aug 07 10:19:22 2018
 Quant Method : Z:\SVOASRV\HPCHEM1\BNA M\METHODS\8270-BM072318.M
 Quant Title : ASP BNA STANDARDS FOR 5 POINT CALIBRATION
 QLast Update : Mon Jul 23 16:08:38 2018
 Response via : Initial Calibration

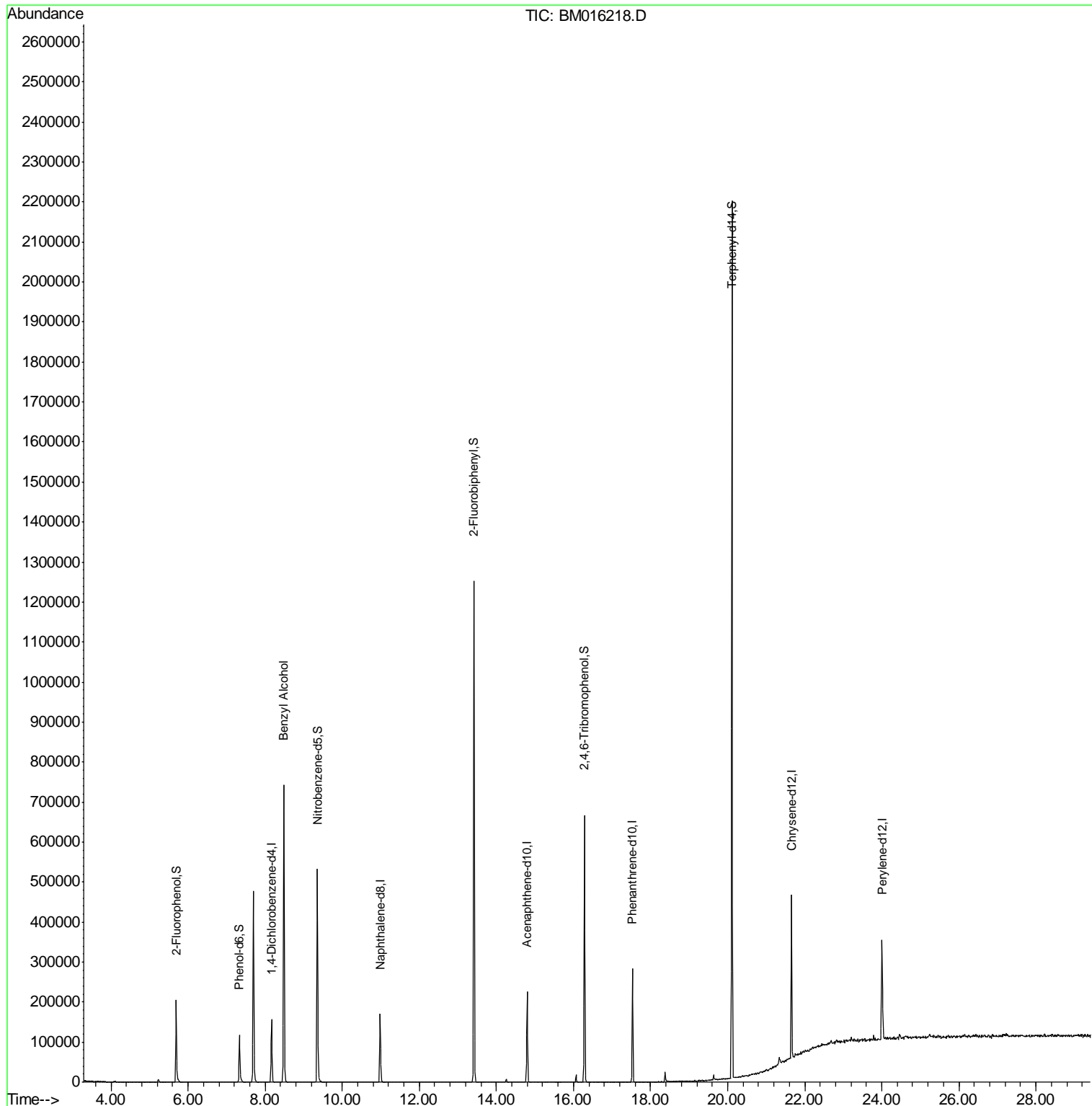
Internal Standards	R.T.	QIon	Response	Conc	Units	Dev(Min)
1) 1,4-Dichlorobenzene-d4	8.17	152	32350	20.00	ng	-0.06
21) Naphthalene-d8	10.99	136	120137	20.00	ng	-0.07
38) Acenaphthene-d10	14.80	164	62441	20.00	ng	-0.06
63) Phenanthrene-d10	17.53	188	132660	20.00	ng	-0.05
75) Chrysene-d12	21.66	240	146526	20.00	ng	-0.05
86) Perylene-d12	24.00	264	160298	20.00	ng	-0.07
System Monitoring Compounds						
5) 2-Fluorophenol	5.69	112	73660	37.82	ng	-0.05
7) Phenol-d6	7.33	99	52920	20.81	ng	-0.06
23) Nitrobenzene-d5	9.35	82	264261	102.31	ng	-0.06
41) 2,4,6-Tribromophenol	16.29	330	66099	83.46	ng	-0.05
44) 2-Fluorobiphenyl	13.42	172	492393	95.95	ng	-0.06
78) Terphenyl-d14	20.11	244	686658	98.10	ng	-0.05
Target Compounds						
15) Benzyl Alcohol	8.49	79	4892	2.416	ng	Qvalue # 38

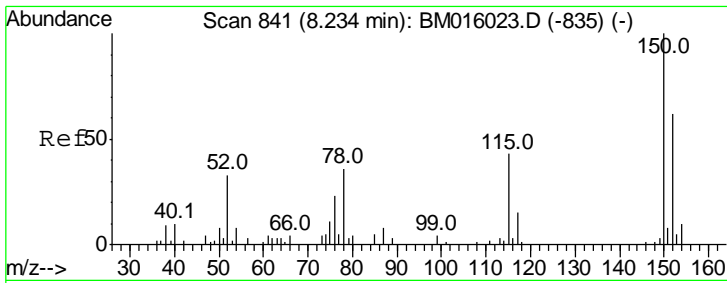
(#) = qualifier out of range (m) = manual integration (+) = signals summed

Data Path : Z:\SVOASRV\HPCHEM1\BNA M\DATA\BM080618\
 Data File : BM016218.D
 Acq On : 07 Aug 2018 08:02
 Operator : SJ/JU
 Sample : J4332-04
 Misc :
 ALS Vial : 25 Sample Multiplier: 1

Instrument :
 BNA_M
 ClientSampleId :

Quant Time: Aug 07 10:19:22 2018
 Quant Method : Z:\SVOASRV\HPCHEM1\BNA M\METHODS\8270-BM072318.M
 Quant Title : ASP BNA STANDARDS FOR 5 POINT CALIBRATION
 QLast Update : Mon Jul 23 16:08:38 2018
 Response via : Initial Calibration

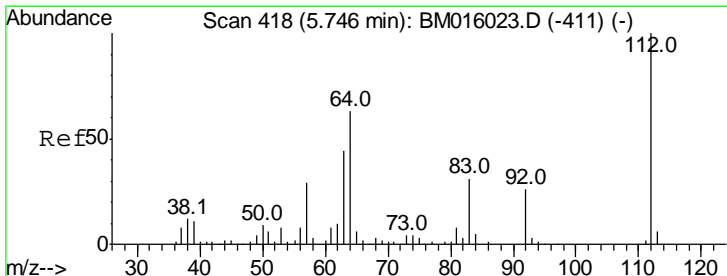
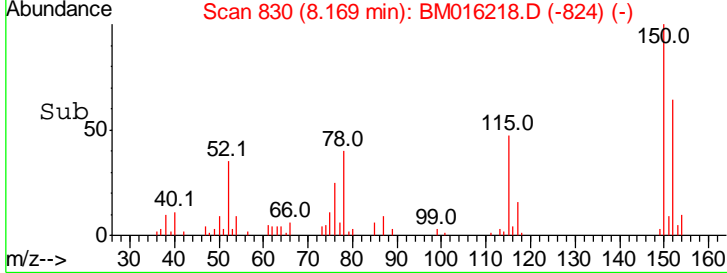
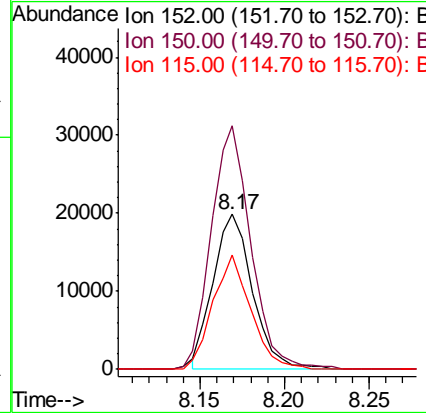
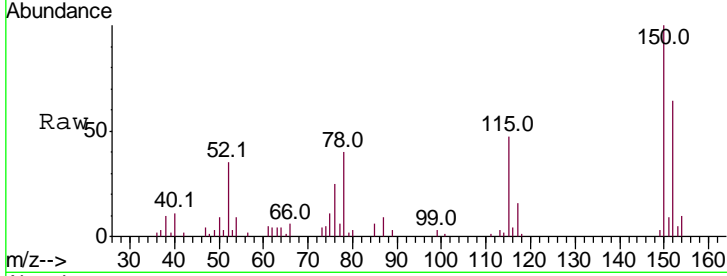




#1
 1,4-Dichlorobenzene-d4
 Concen: 20.000 ng
 RT: 8.17 min Scan# 830
 Delta R.T. -0.06 min
 Lab File: BM016218.D
 Acq: 07 Aug 2018 08:02

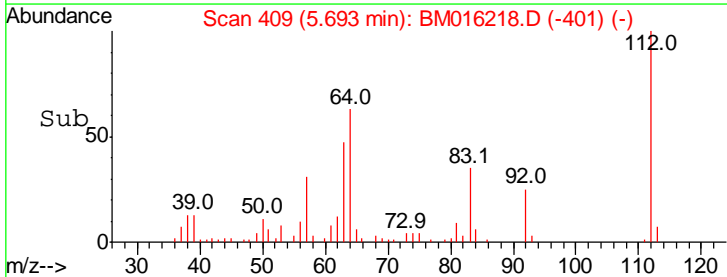
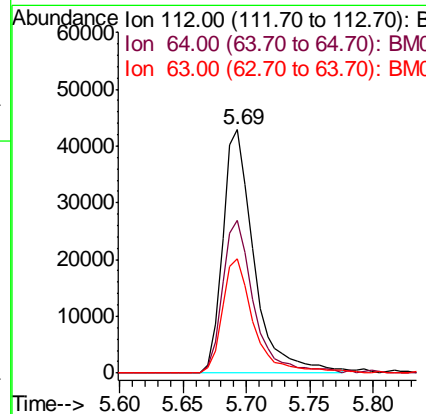
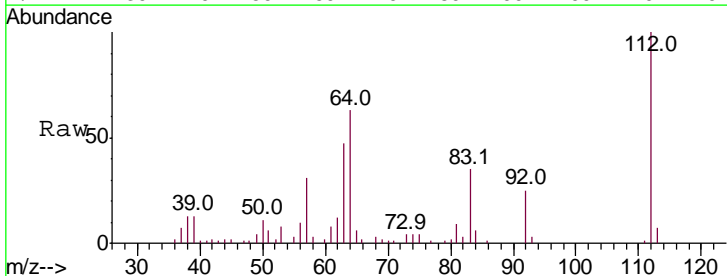
Instrument :
 BNA_M
 ClientSampled :

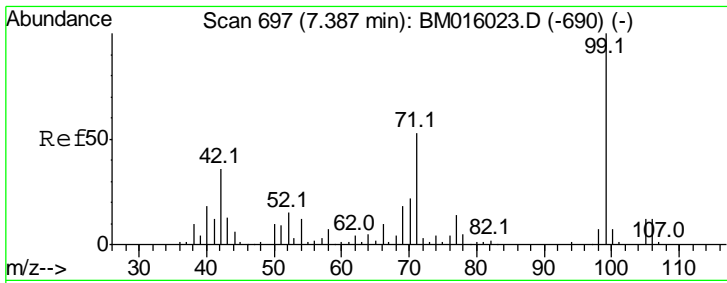
Tgt Ion	Resp	Lower	Upper
152	32350		
152	100		
150	157.2	119.5	179.3
115	73.7	43.0	64.4



#5
 2-Fluorophenol
 Concen: N.D. ng
 RT: 5.69 min Scan# 409
 Delta R.T. -0.05 min
 Lab File: BM016218.D
 Acq: 07 Aug 2018 08:02

Tgt Ion	Resp	Lower	Upper
112	73660		
112	100		
64	62.9	38.6	57.8
63	46.8	19.3	28.9

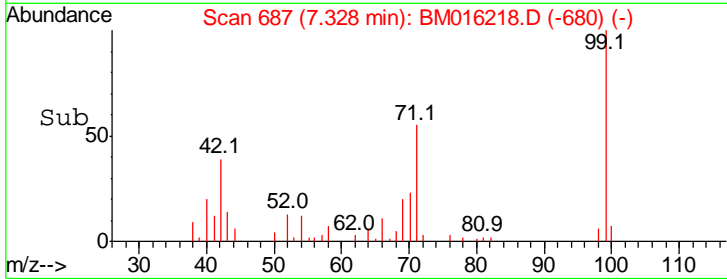
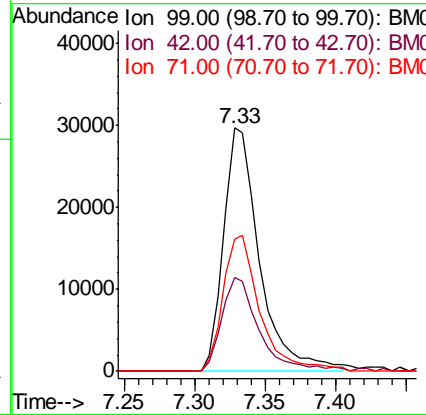
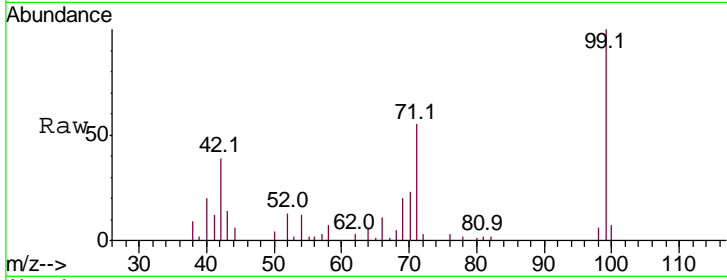




#7
 Phenol-d6
 Concen: N.D. ng
 RT: 7.33 min Scan# 687
 Delta R.T. -0.06 min
 Lab File: BM016218.D
 Acq: 07 Aug 2018 08:02

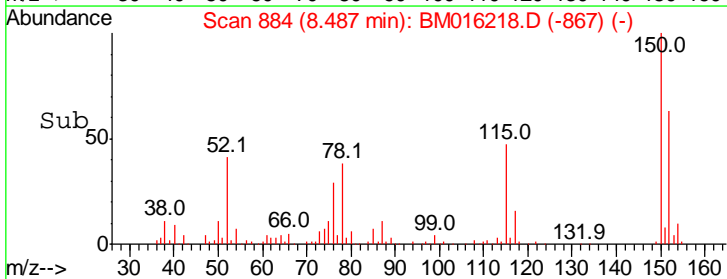
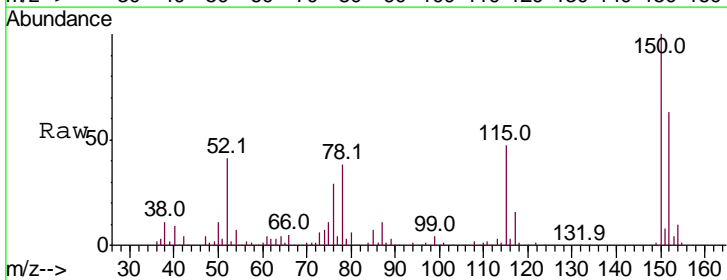
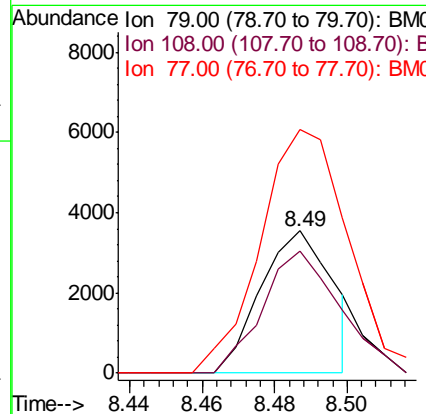
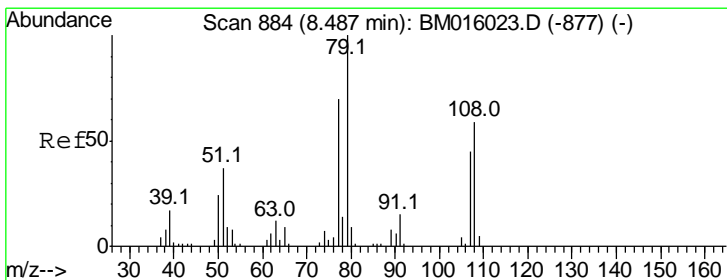
Instrument :
 BNA_M
 ClientSampled :

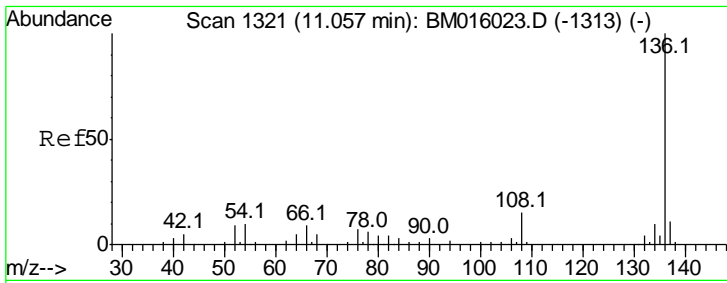
Tgt Ion	Resp	Lower	Upper
99	100		
42	38.6	11.0	16.4#
71	54.5	23.4	35.2#



#15
 Benzyl Alcohol
 Concen: 2.416 ng
 RT: 8.49 min Scan# 884
 Delta R.T. -0.00 min
 Lab File: BM016218.D
 Acq: 07 Aug 2018 08:02

Tgt Ion	Resp	Lower	Upper
79	100		
108	85.5	65.0	97.4
77	171.5	53.0	79.6#



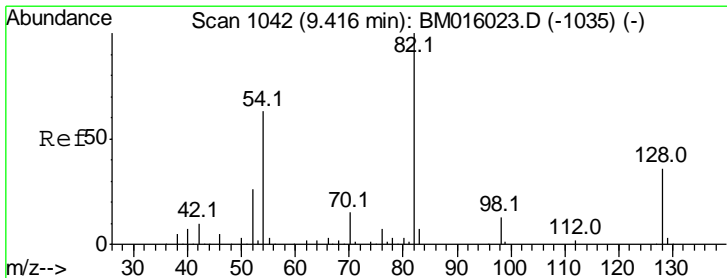
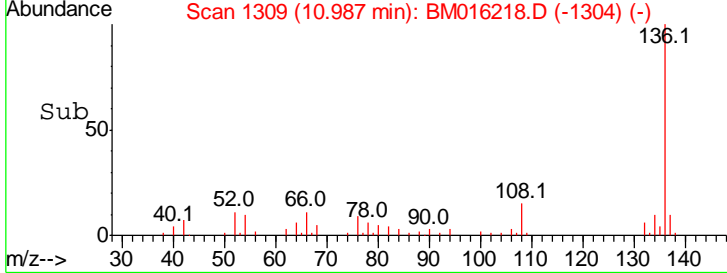
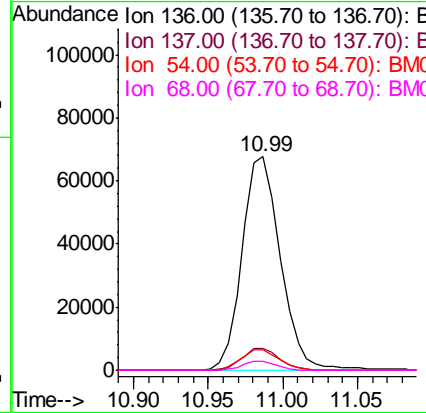
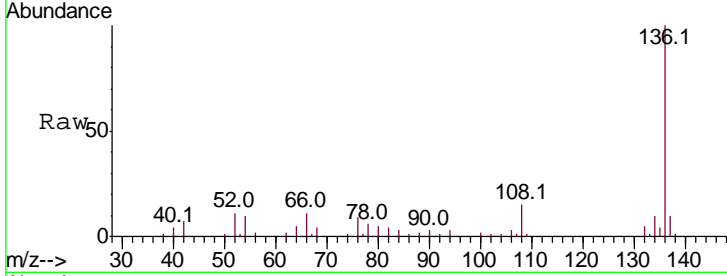


#21
 Naphthalene-d8
 Concen: 20.000 ng
 RT: 10.99 min Scan# 1309
 Delta R.T. -0.07 min
 Lab File: BM016218.D
 Acq: 07 Aug 2018 08:02

Instrument :
 BNA_M
 ClientSampled :

Tgt Ion: 136 Resp: 120137

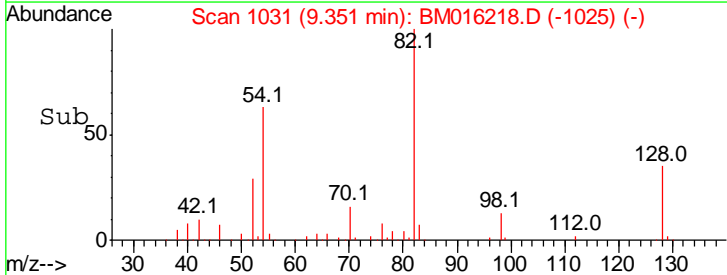
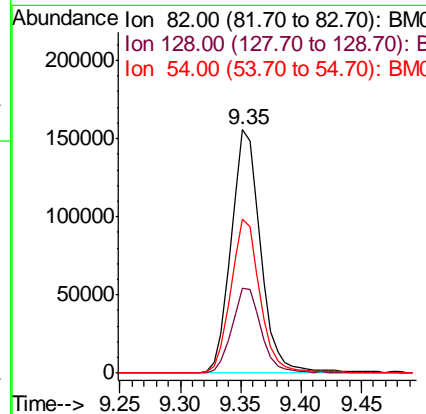
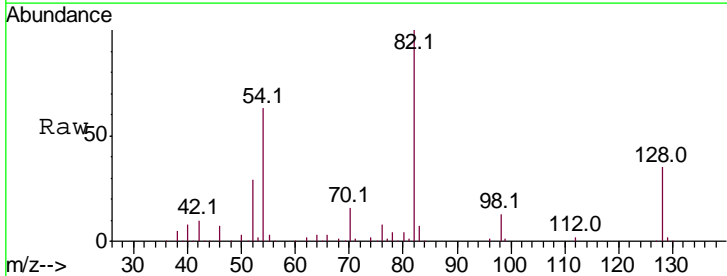
Ion	Ratio	Lower	Upper
136	100		
137	10.3	8.7	13.1
54	9.7	4.6	6.8#
68	4.3	3.7	5.5

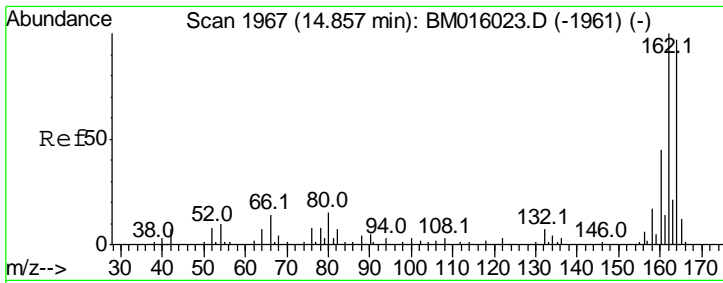


#23
 Nitrobenzene-d5
 Concen: N.D. ng
 RT: 9.35 min Scan# 1031
 Delta R.T. -0.06 min
 Lab File: BM016218.D
 Acq: 07 Aug 2018 08:02

Tgt Ion: 82 Resp: 264261

Ion	Ratio	Lower	Upper
82	100		
128	35.1	32.8	49.2
54	63.3	40.6	60.8#

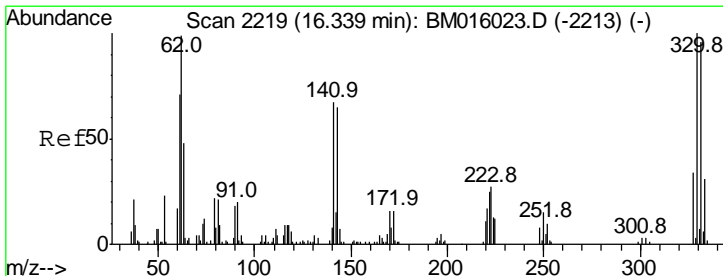
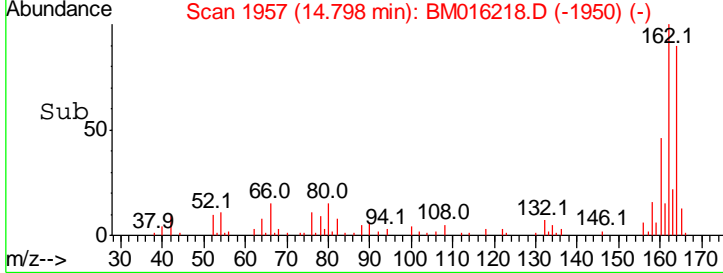
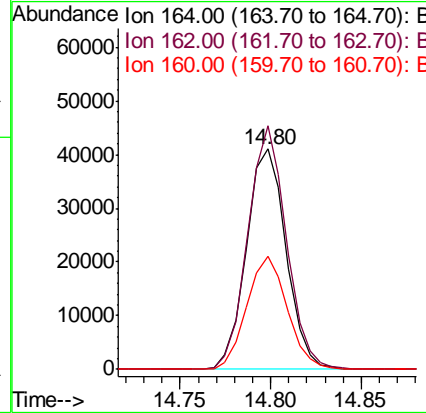
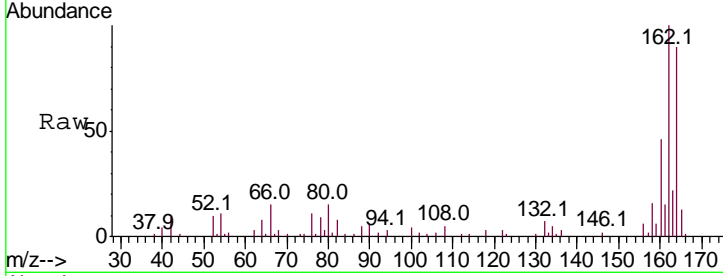




#38
 Acenaphthene-d10
 Concen: 20.000 ng
 RT: 14.80 min Scan# 1957
 Delta R.T. -0.06 min
 Lab File: BM016218.D
 Acq: 07 Aug 2018 08:02

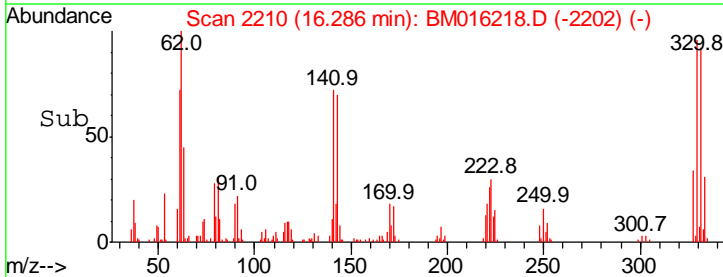
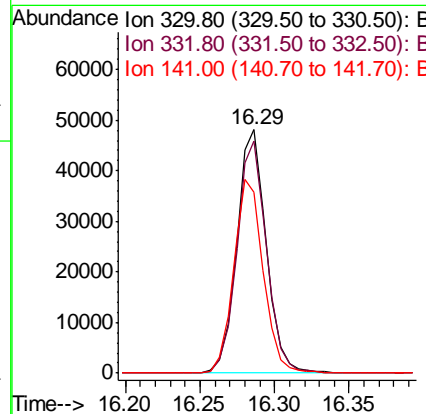
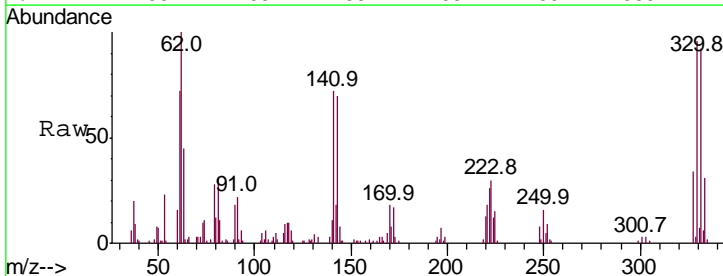
Instrument :
 BNA_M
 ClientSampled :

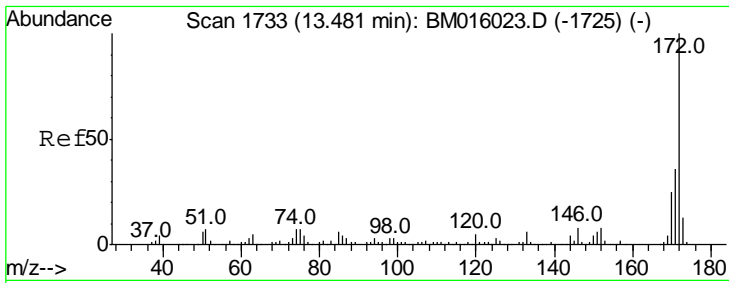
Tgt Ion	Resp	Lower	Upper
164	100		
162	110.7	82.4	123.6
160	51.1	35.8	53.6



#41
 2,4,6-Tribromophenol
 Concen: N.D. ng
 RT: 16.29 min Scan# 2210
 Delta R.T. -0.05 min
 Lab File: BM016218.D
 Acq: 07 Aug 2018 08:02

Tgt Ion	Resp	Lower	Upper
330	100		
332	95.6	0.0	0.0#
141	80.3	0.0	0.0#



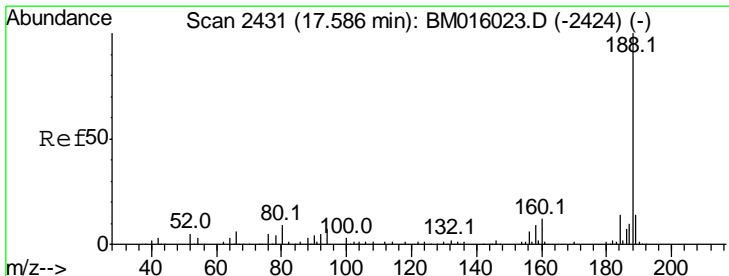
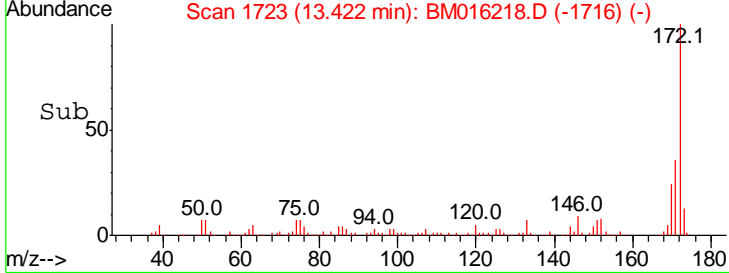
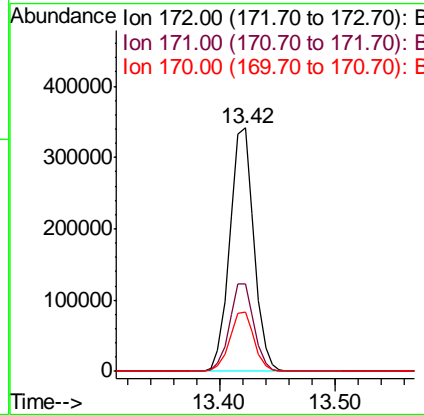
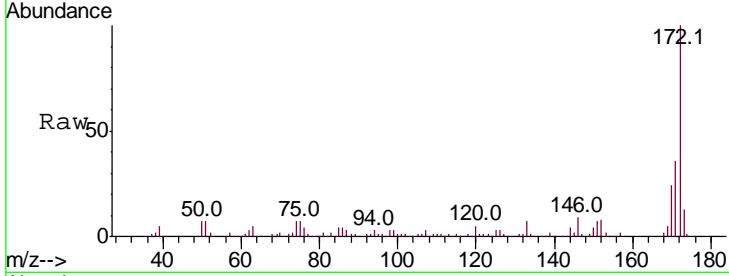


#44
 2-Fluorobiphenyl
 Concen: N.D. ng
 RT: 13.42 min Scan# 1723
 Delta R.T. -0.06 min
 Lab File: BM016218.D
 Acq: 07 Aug 2018 08:02

Instrument :
 BNA_M
 ClientSampled :

Tgt Ion:172 Resp: 492393

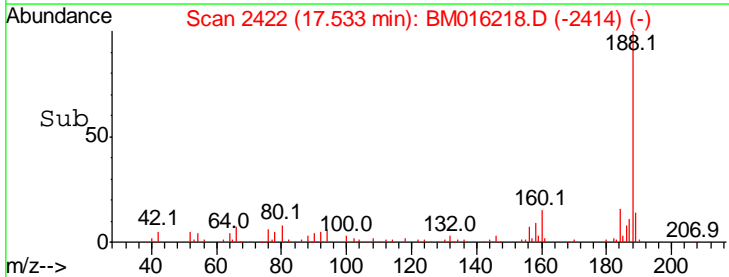
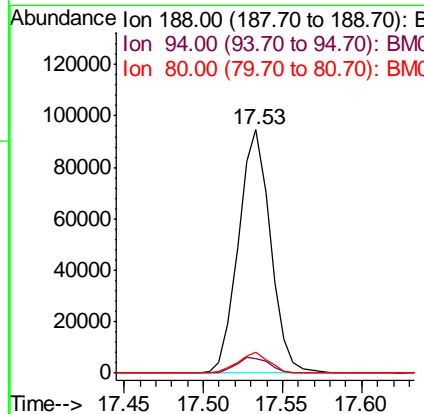
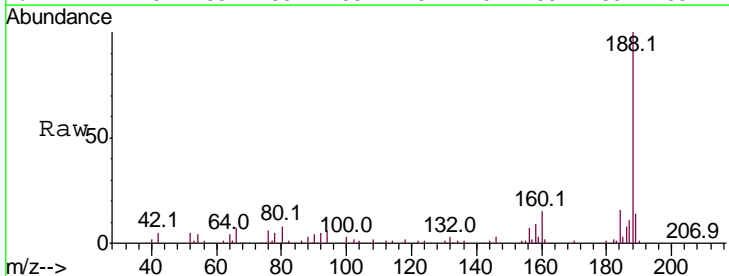
Ion	Ratio	Lower	Upper
172	100		
171	35.9	28.5	42.7
170	24.1	18.8	28.2

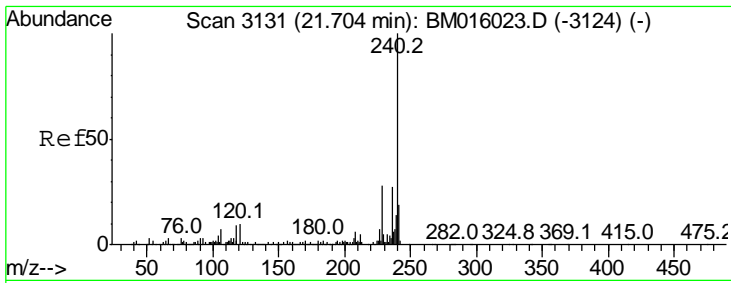


#63
 Phenanthrene-d10
 Concen: 20.000 ng
 RT: 17.53 min Scan# 2422
 Delta R.T. -0.05 min
 Lab File: BM016218.D
 Acq: 07 Aug 2018 08:02

Tgt Ion:188 Resp: 132660

Ion	Ratio	Lower	Upper
188	100		
94	6.1	8.7	13.1#
80	8.4	9.3	13.9#

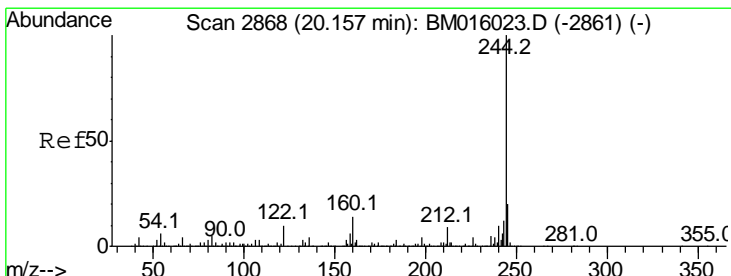
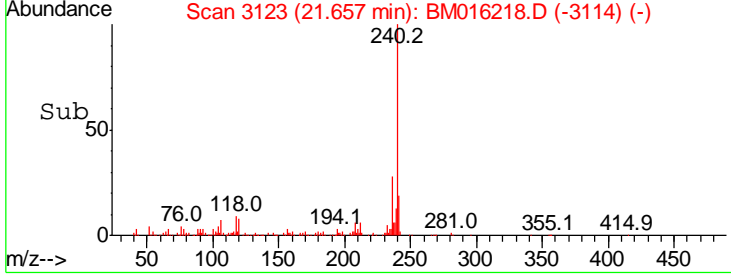
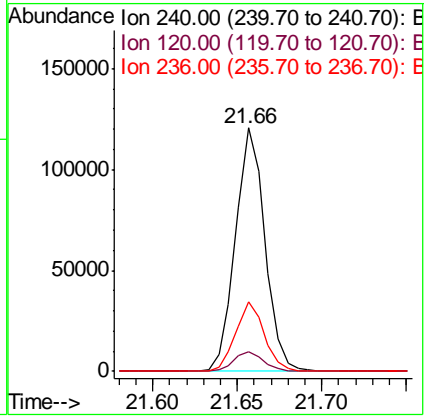
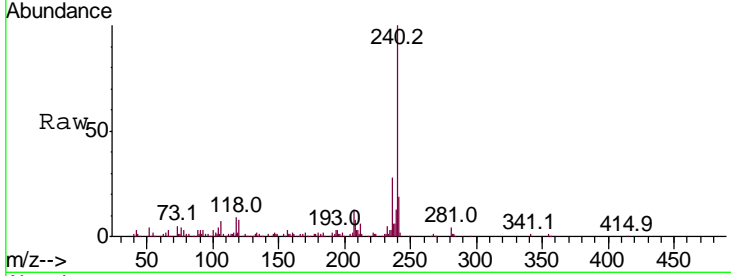




#75
 Chrysene-d12
 Concen: 20.000 ng
 RT: 21.66 min Scan# 3123
 Delta R.T. -0.05 min
 Lab File: BM016218.D
 Acq: 07 Aug 2018 08:02

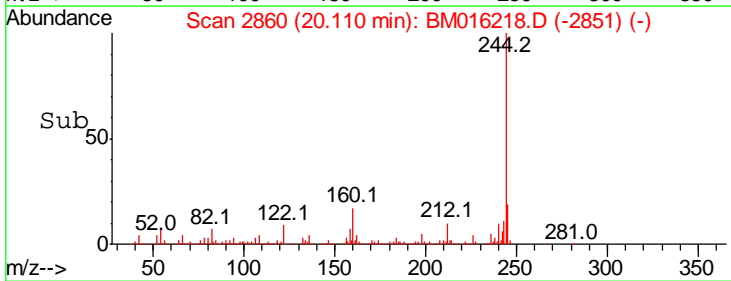
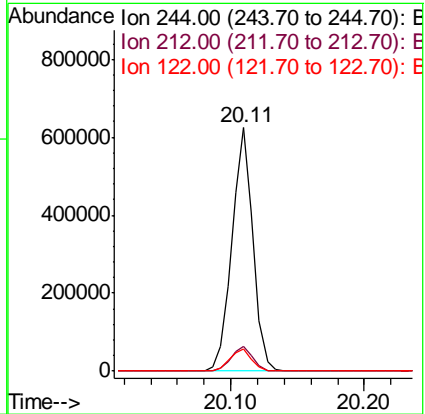
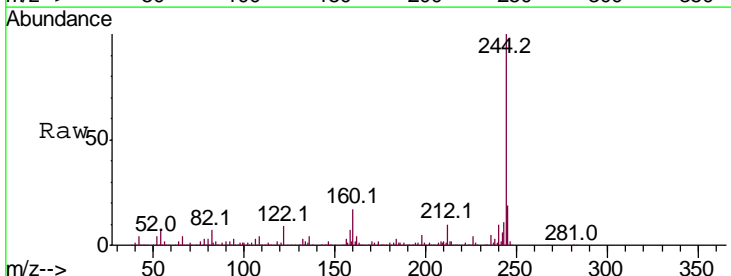
Instrument :
 BNA_M
 ClientSampled :

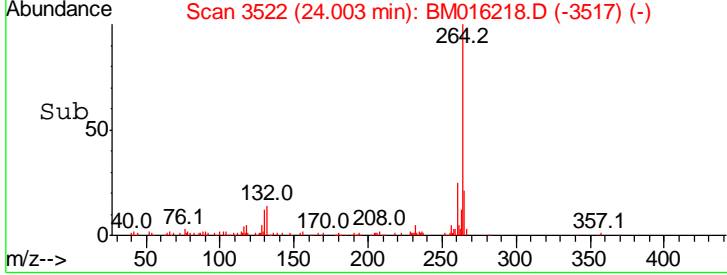
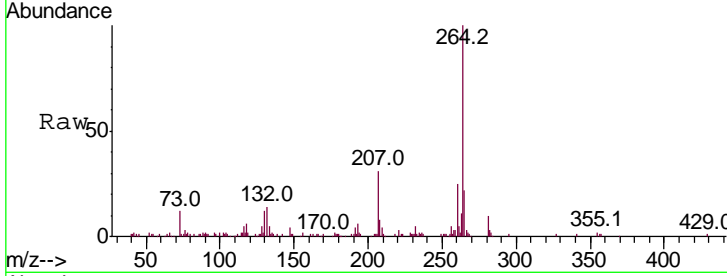
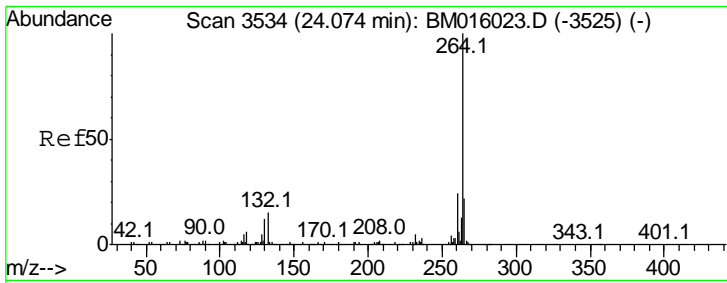
Tgt Ion	Resp	Lower	Upper
240	100		
120	8.2	8.2	12.2
236	28.5	20.0	30.0



#78
 Terphenyl-d14
 Concen: N.D. ng
 RT: 20.11 min Scan# 2860
 Delta R.T. -0.05 min
 Lab File: BM016218.D
 Acq: 07 Aug 2018 08:02

Tgt Ion	Resp	Lower	Upper
244	100		
212	10.1	4.9	7.3#
122	8.8	6.2	9.4





#86
 Perylene-d12
 Concen: 20.000 ng
 RT: 24.00 min Scan# 3522
 Delta R.T. -0.07 min
 Lab File: BM016218.D
 Acq: 07 Aug 2018 08:02

Instrument :
 BNA_M
 ClientSampled :

Tot Ion	Ratio	Lower	Upper
264	100		
260	25.2	18.6	27.8
265	22.0	17.3	25.9

