

Data Path : Z:\svoasrv\HPCHEM1\BNA_M\Data\BM081523\
 Data File : BM041410.D
 Acq On : 15 Aug 2023 17:42
 Operator : MA/JU
 Sample : 04009-02
 Misc :
 ALS Vial : 8 Sample Multiplier: 1

Instrument :
 BNA_M
 ClientSampleId :
 CONC-COMP

Quant Time: Aug 16 01:11:42 2023
 Quant Method : Z:\svoasrv\HPCHEM1\BNA_M\Methods\8270-BM072823.M
 Quant Title : ASP BNA STANDARDS FOR 5 POINT CALIBRATION
 QLast Update : Fri Aug 11 17:51:06 2023
 Response via : Initial Calibration

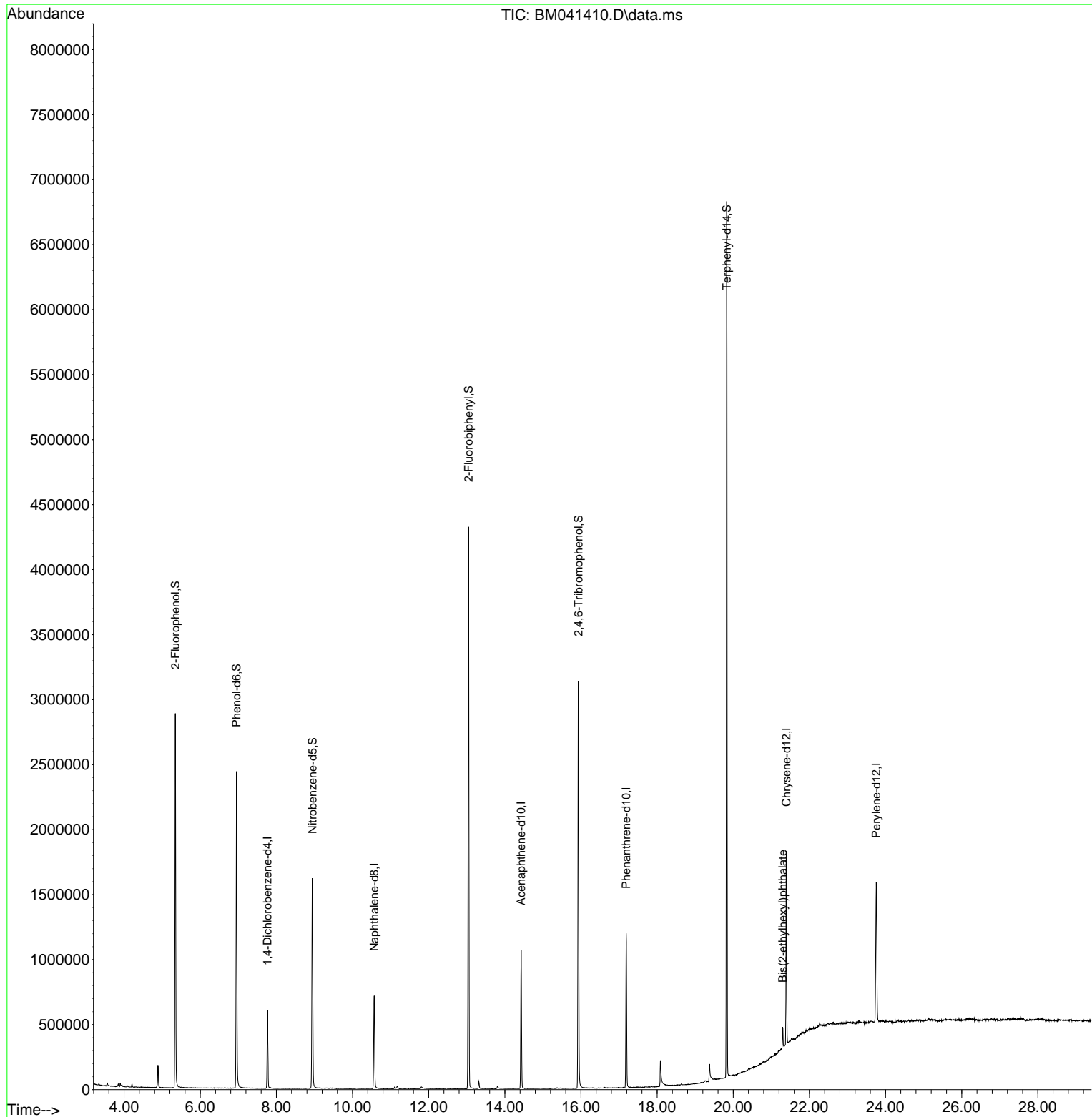
Compound	R.T.	QIon	Response	Conc	Units	Dev(Min)
Internal Standards						
1) 1,4-Dichlorobenzene-d4	7.763	152	153795	20.000	ng	-0.01
21) Naphthalene-d8	10.569	136	582915	20.000	ng	-0.01
39) Acenaphthene-d10	14.427	164	348274	20.000	ng	-0.01
64) Phenanthrene-d10	17.186	188	716645	20.000	ng	-0.02
76) Chrysene-d12	21.392	240	673958	20.000	ng	-0.02
86) Perylene-d12	23.756	264	809660	20.000	ng	-0.02
System Monitoring Compounds						
5) 2-Fluorophenol	5.346	112	1115985	108.452	ng	0.00
7) Phenol-d6	6.951	99	1297278	97.258	ng	0.00
23) Nitrobenzene-d5	8.945	82	954359	76.138	ng	0.00
42) 2,4,6-Tribromophenol	15.933	330	590466	119.864	ng	-0.01
45) 2-Fluorobiphenyl	13.045	172	2074068	75.230	ng	-0.01
79) Terphenyl-d14	19.827	244	3119273	83.682	ng	-0.02
Target Compounds						Qvalue
84) Bis(2-ethylhexyl)phtha...	21.298	149	62259	4.696	ng	98

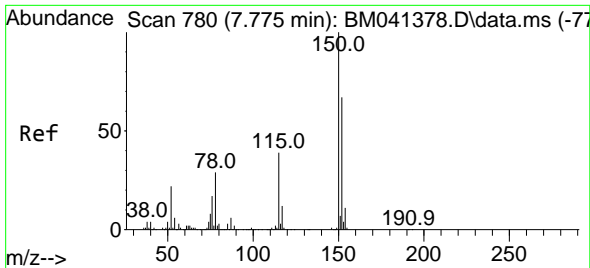
(#) = qualifier out of range (m) = manual integration (+) = signals summed

Data Path : Z:\svoasrv\HPCHEM1\BNA_M\Data\BM081523\
Data File : BM041410.D
Acq On : 15 Aug 2023 17:42
Operator : MA/JU
Sample : 04009-02
Misc :
ALS Vial : 8 Sample Multiplier: 1

Instrument :
BNA_M
ClientSampleId :
CONC-COMP

Quant Time: Aug 16 01:11:42 2023
Quant Method : Z:\svoasrv\HPCHEM1\BNA_M\Methods\8270-BM072823.M
Quant Title : ASP BNA STANDARDS FOR 5 POINT CALIBRATION
QLast Update : Fri Aug 11 17:51:06 2023
Response via : Initial Calibration

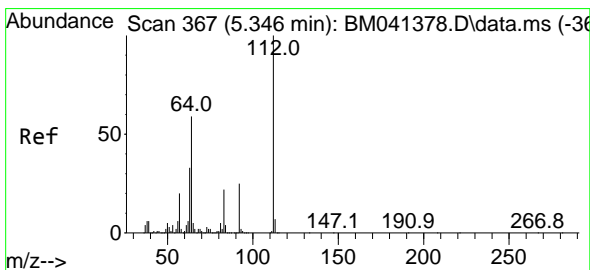
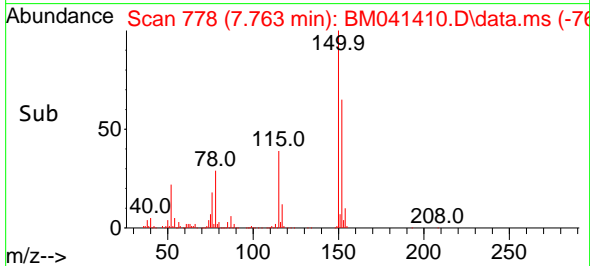
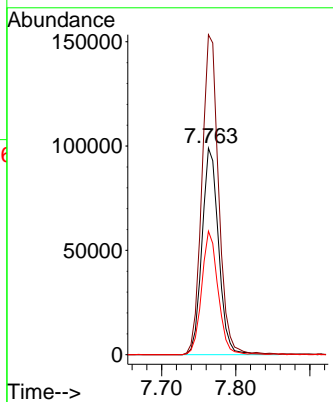
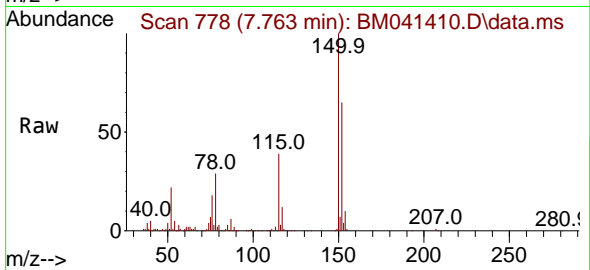




#1
 1,4-Dichlorobenzene-d4
 Concen: 20.000 ng
 RT: 7.763 min Scan# 71
 Delta R.T. -0.012 min
 Lab File: BM041410.D
 Acq: 15 Aug 2023 17:42

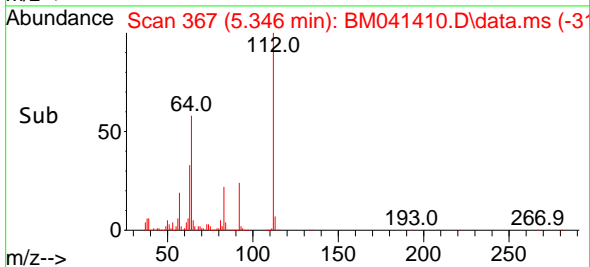
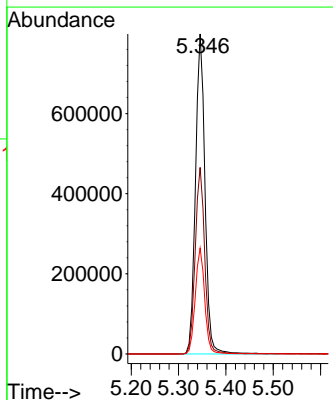
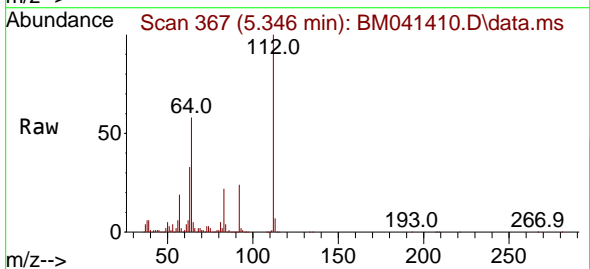
Instrument :
 BNA_M
 ClientSampleId :
 CONC-COMP

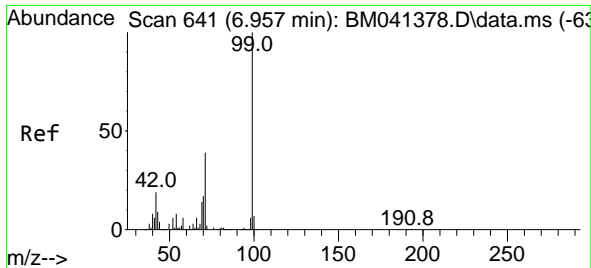
Tgt Ion:152 Resp: 153795
 Ion Ratio Lower Upper
 152 100
 150 154.9 125.5 188.3
 115 59.8 48.0 72.0



#5
 2-Fluorophenol
 Concen: 108.452 ng
 RT: 5.346 min Scan# 367
 Delta R.T. -0.000 min
 Lab File: BM041410.D
 Acq: 15 Aug 2023 17:42

Tgt Ion:112 Resp: 1115985
 Ion Ratio Lower Upper
 112 100
 64 58.3 48.5 72.7
 63 33.0 26.5 39.7





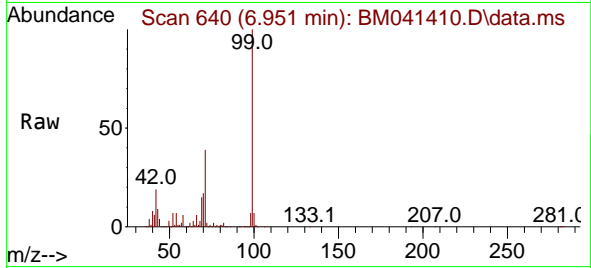
#7
 Phenol-d6
 Concen: 97.258 ng
 RT: 6.951 min Scan# 641
 Delta R.T. -0.006 min
 Lab File: BM041410.D
 Acq: 15 Aug 2023 17:42

Instrument :

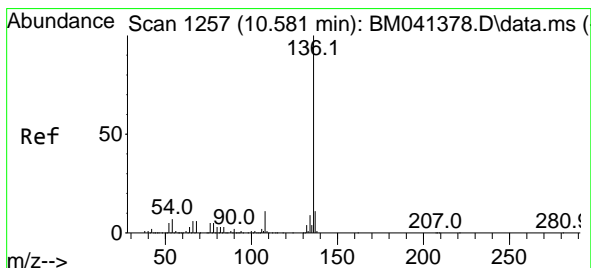
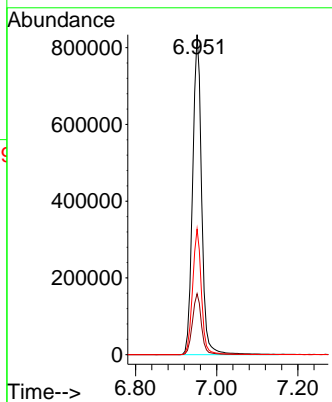
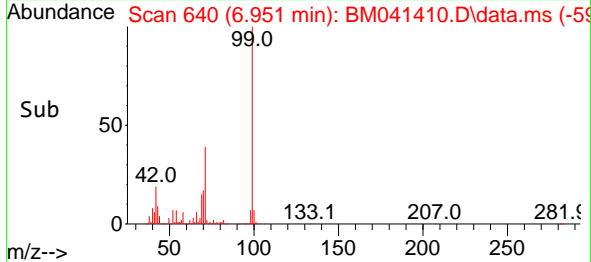
BNA_M

ClientSampleId :

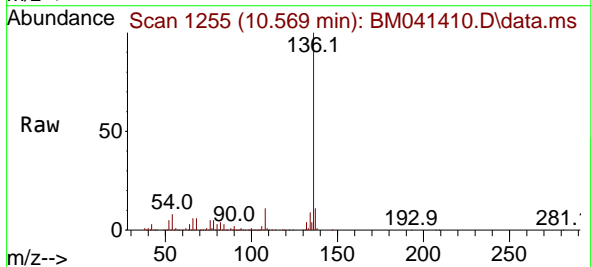
CONC-COMP



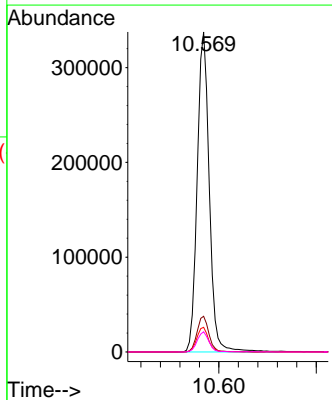
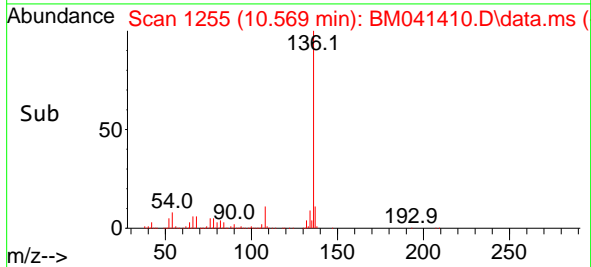
Tgt Ion: 99 Resp: 1297278
 Ion Ratio Lower Upper
 99 100
 42 19.1 15.4 23.0
 71 39.3 28.2 42.4

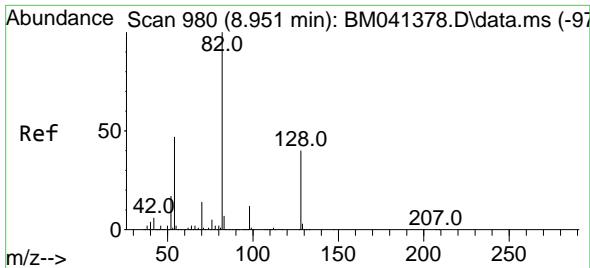


#21
 Naphthalene-d8
 Concen: 20.000 ng
 RT: 10.569 min Scan# 1255
 Delta R.T. -0.012 min
 Lab File: BM041410.D
 Acq: 15 Aug 2023 17:42



Tgt Ion: 136 Resp: 582915
 Ion Ratio Lower Upper
 136 100
 137 11.1 8.8 13.2
 54 7.7 6.9 10.3
 68 6.3 5.4 8.2





#23
 Nitrobenzene-d5
 Concen: 76.138 ng
 RT: 8.945 min Scan# 91
 Delta R.T. -0.006 min
 Lab File: BM041410.D
 Acq: 15 Aug 2023 17:42

Instrument :

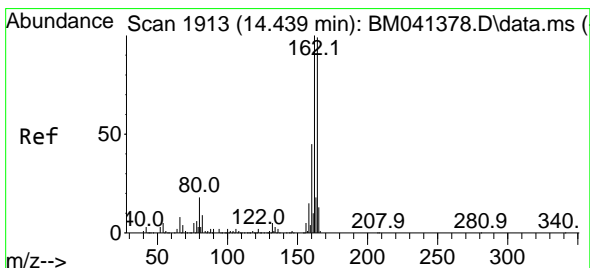
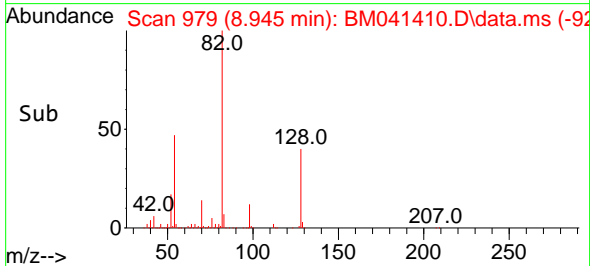
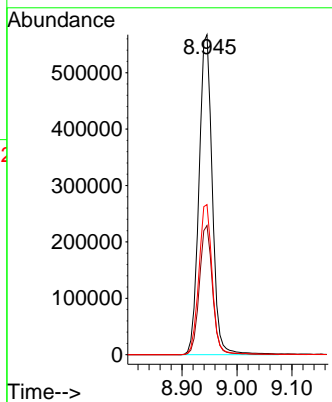
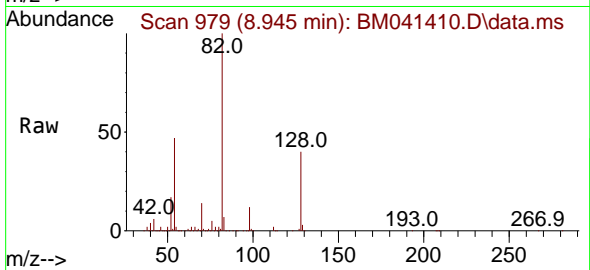
BNA_M

ClientSampleId :

CONC-COMP

Tgt Ion: 82 Resp: 954359

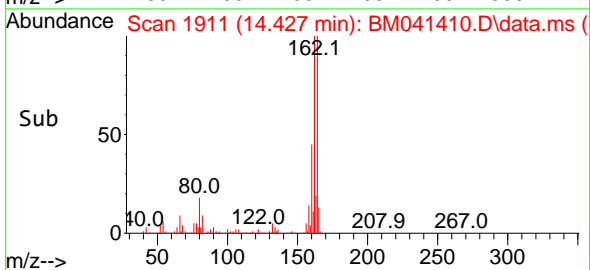
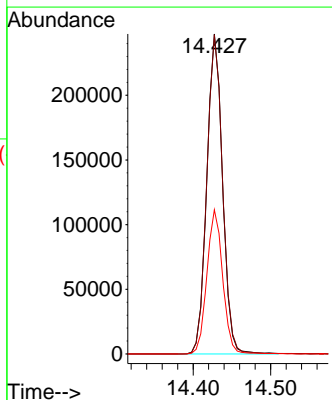
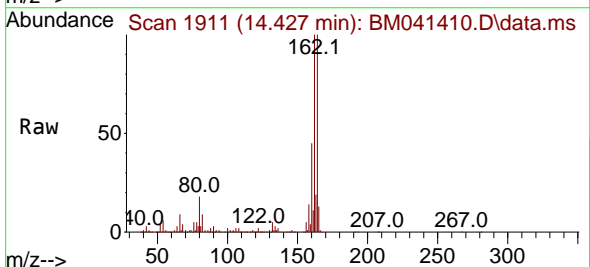
Ion	Ratio	Lower	Upper
82	100		
128	40.3	31.8	47.6
54	46.9	40.1	60.1

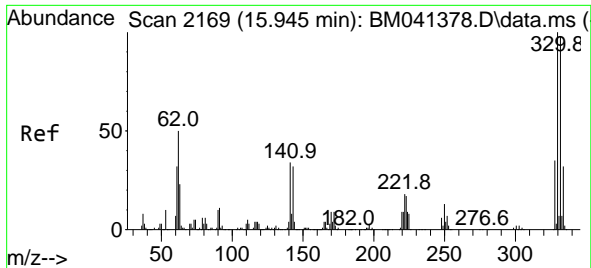


#39
 Acenaphthene-d10
 Concen: 20.000 ng
 RT: 14.427 min Scan# 1911
 Delta R.T. -0.012 min
 Lab File: BM041410.D
 Acq: 15 Aug 2023 17:42

Tgt Ion: 164 Resp: 348274

Ion	Ratio	Lower	Upper
164	100		
162	99.8	80.4	120.6
160	45.1	36.2	54.2





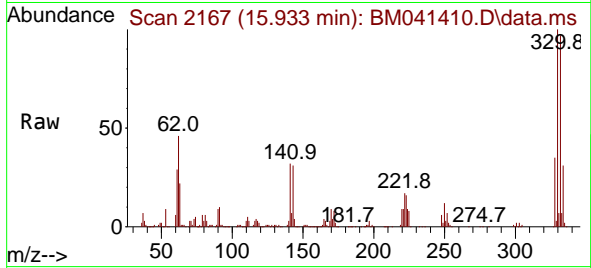
#42
 2,4,6-Tribromophenol
 Concen: 119.864 ng
 RT: 15.933 min Scan# 2167
 Delta R.T. -0.012 min
 Lab File: BM041410.D
 Acq: 15 Aug 2023 17:42

Instrument :

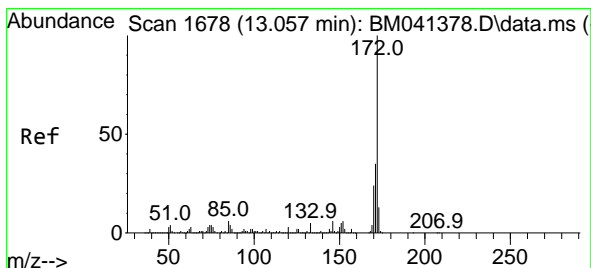
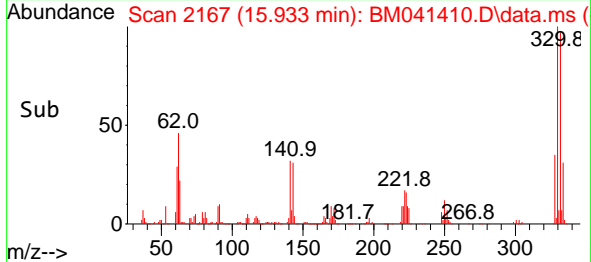
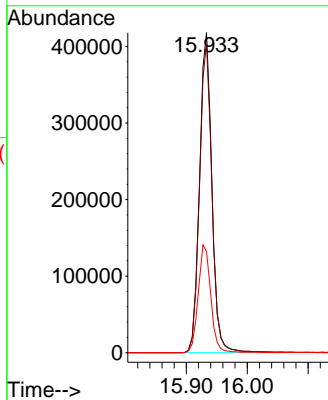
BNA_M

ClientSampleId :

CONC-COMP

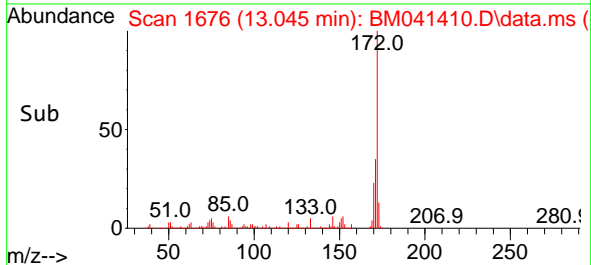
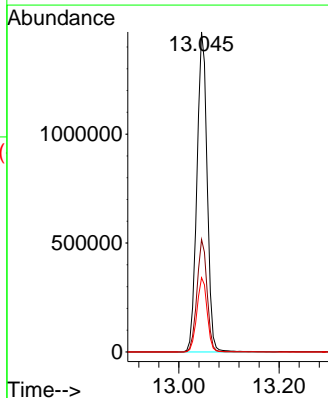
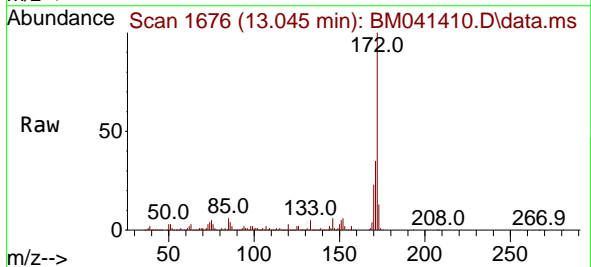


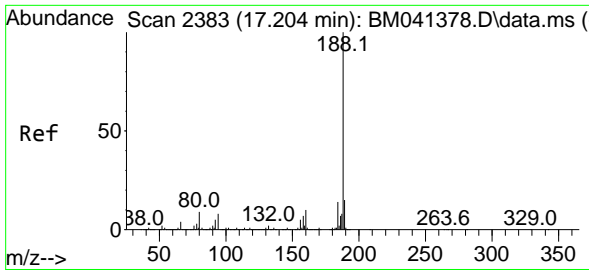
Tgt Ion:330 Resp: 590466
 Ion Ratio Lower Upper
 330 100
 332 97.3 77.7 116.5
 141 34.5 28.3 42.5



#45
 2-Fluorobiphenyl
 Concen: 75.230 ng
 RT: 13.045 min Scan# 1676
 Delta R.T. -0.012 min
 Lab File: BM041410.D
 Acq: 15 Aug 2023 17:42

Tgt Ion:172 Resp: 2074068
 Ion Ratio Lower Upper
 172 100
 171 35.1 28.1 42.1
 170 23.2 18.9 28.3



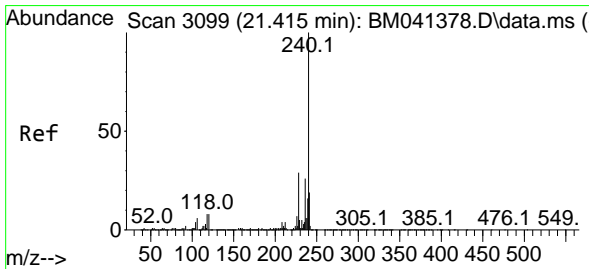
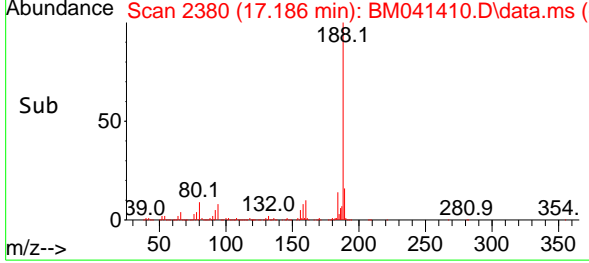
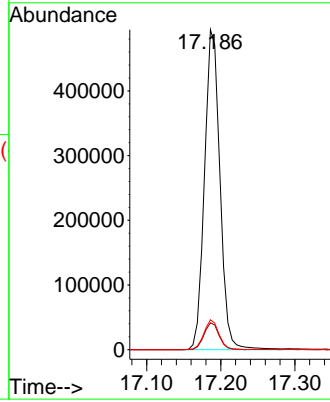
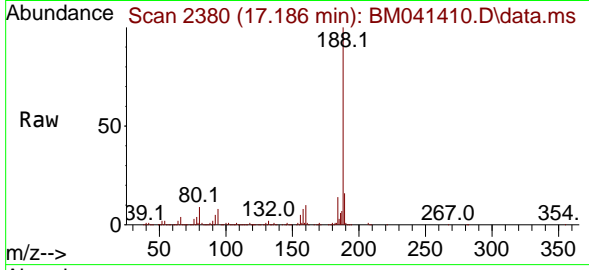


#64
 Phenanthrene-d10
 Concen: 20.000 ng
 RT: 17.186 min Scan# 21
 Delta R.T. -0.018 min
 Lab File: BM041410.D
 Acq: 15 Aug 2023 17:42

Instrument :
 BNA_M
 ClientSampleId :
 CONC-COMP

Tgt Ion:188 Resp: 716645

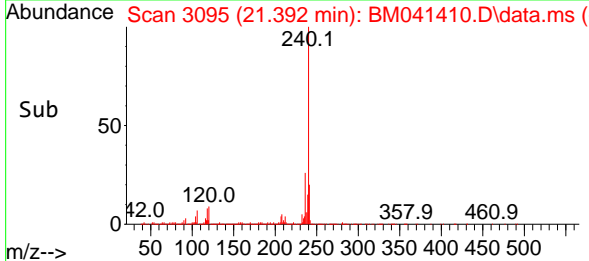
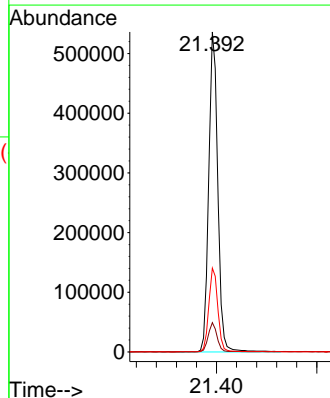
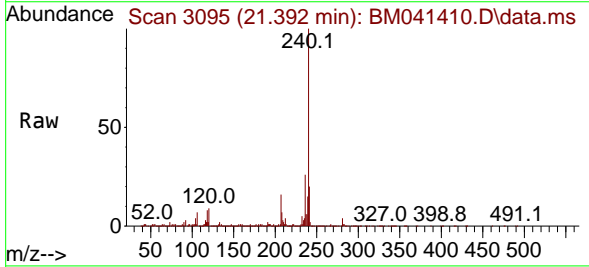
Ion	Ratio	Lower	Upper
188	100		
94	8.4	8.2	12.2
80	9.4	8.6	13.0

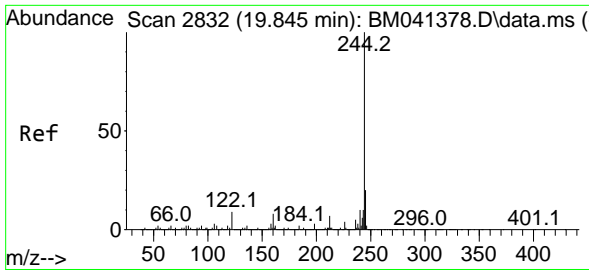


#76
 Chrysene-d12
 Concen: 20.000 ng
 RT: 21.392 min Scan# 3095
 Delta R.T. -0.024 min
 Lab File: BM041410.D
 Acq: 15 Aug 2023 17:42

Tgt Ion:240 Resp: 673958

Ion	Ratio	Lower	Upper
240	100		
120	9.1	8.3	12.5
236	26.2	20.6	30.8



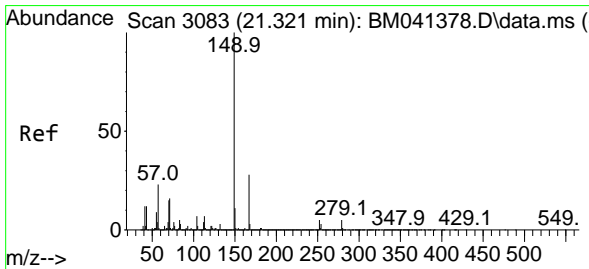
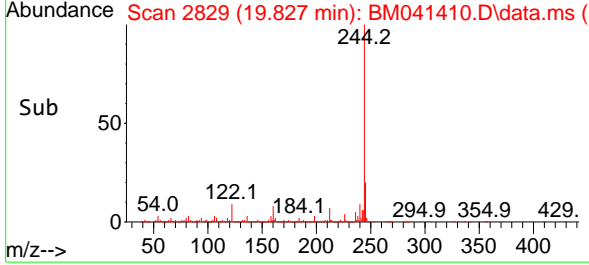
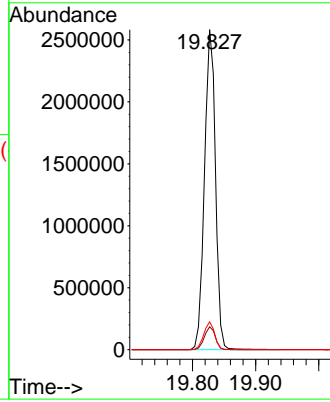
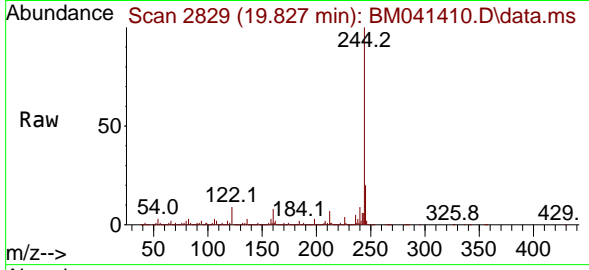


#79
 Terphenyl-d14
 Concen: 83.682 ng
 RT: 19.827 min Scan# 21
 Delta R.T. -0.018 min
 Lab File: BM041410.D
 Acq: 15 Aug 2023 17:42

Instrument : BNA_M
 ClientSampleId : CONC-COMP

Tgt Ion:244 Resp: 3119273

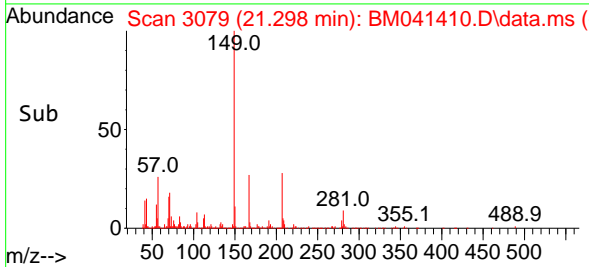
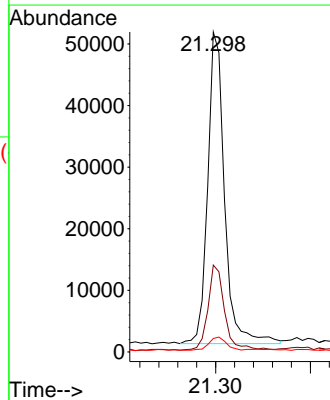
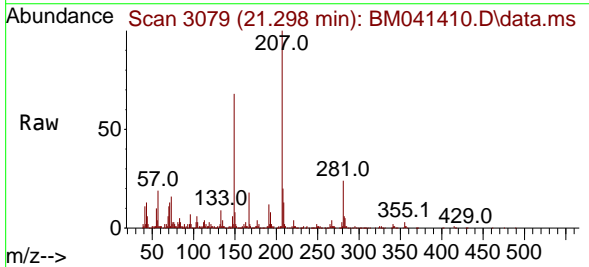
Ion	Ratio	Lower	Upper
244	100		
212	7.2	5.4	8.2
122	8.7	7.8	11.6

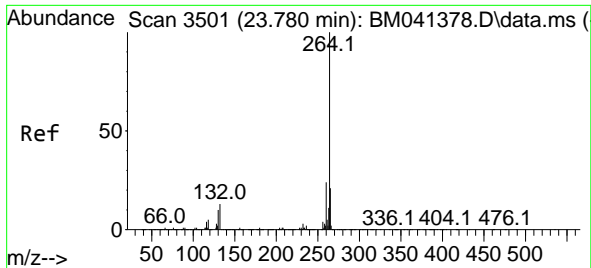


#84
 Bis(2-ethylhexyl)phthalate
 Concen: 4.696 ng
 RT: 21.298 min Scan# 3079
 Delta R.T. -0.024 min
 Lab File: BM041410.D
 Acq: 15 Aug 2023 17:42

Tgt Ion:149 Resp: 62259

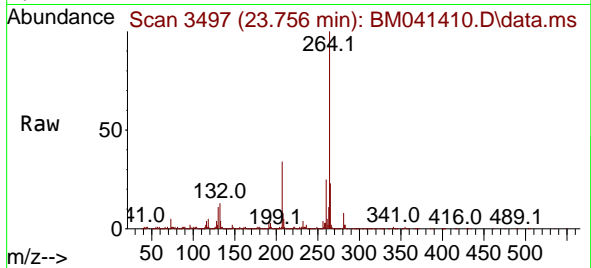
Ion	Ratio	Lower	Upper
149	100		
167	27.2	21.0	31.6
279	4.2	3.1	4.7





#86
 Perylene-d12
 Concen: 20.000 ng
 RT: 23.756 min Scan# 34
 Delta R.T. -0.024 min
 Lab File: BM041410.D
 Acq: 15 Aug 2023 17:42

Instrument :
 BNA_M
 ClientSampleId :
 CONC-COMP



Tgt Ion:264 Resp: 809660

Ion	Ratio	Lower	Upper
264	100		
260	24.5	18.5	27.7
265	22.7	17.4	26.0

