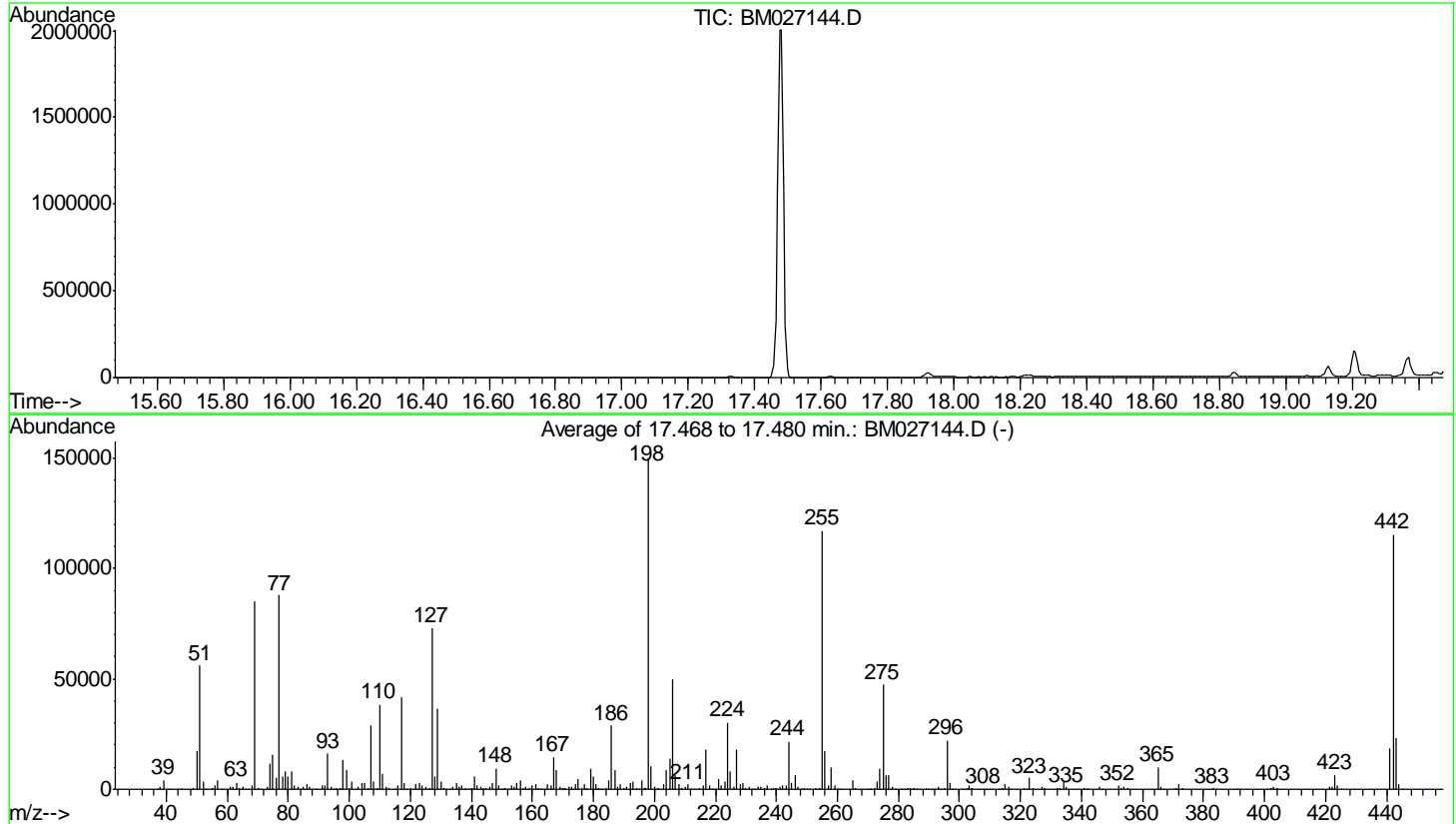


Data Path : Z:\SVOASRV\HPCHEM1\BNA M\DATA\BM082020\
 Data File : BM027144.D
 Acq On : 20 Aug 2020 00:32
 Operator : JU/CG
 Sample : DFTPP29
 Misc :
 ALS Vial : 1 Sample Multiplier: 1

Instrument :
 BNA_M
 ClientSampleId :
 DFTPP29

Integration File: rteint.p

Method : Z:\SVOASRV\HPCHEM1\BNA_M\METHODS\SOM-EPA-SIM-BM081720.M
 Title : ASP BNA STANDARDS FOR 5 POINT CALIBRATION
 Last Update : Thu Aug 20 06:55:50 2020



AutoFind: Scans 2462, 2463, 2464; Background Corrected with Scan 2456

Target Mass	Rel. to Mass	Lower Limit%	Upper Limit%	Rel. Abn%	Raw Abn	Result Pass/Fail
51	198	10	80	37.4	56088	PASS
68	69	0.00	2	1.9	1645	PASS
69	198	0.00	100	56.8	85109	PASS
70	69	0.00	2	0.6	478	PASS
127	198	10	80	48.7	73050	PASS
197	198	0.00	2	0.4	608	PASS
198	198	100	100	100.0	149909	PASS
199	198	5	9	7.1	10600	PASS
275	198	10	60	31.6	47400	PASS
365	198	1	100	6.6	9944	PASS
441	198	0.01	100	12.2	18276	PASS
442	198	50	100	77.0	115357	PASS
443	442	15	24	20.3	23393	PASS

m/z	Abundance
44.00	240.0
73.10	223.0
83.90	223.0
193.10	198.0
207.00	1168.0
208.10	259.0
281.00	323.0

Instrument :
BNA_M
ClientSampleId :
DFTPP29

m/z	Abundance
37.10	236.0
38.00	749.0
39.10	3605.0
40.00	291.0
41.00	217.0
44.10	272.0
49.00	441.0
50.10	13774.0
51.00	43000.0
52.00	2406.0
54.90	270.0
56.00	1369.0
57.00	3121.0
58.00	198.0
61.00	854.0
61.90	1016.0
63.10	2251.0
64.00	518.0
64.90	759.0
65.90	198.0
68.00	1349.0
69.00	64688.0
70.00	311.0
73.00	943.0
74.00	8236.0
75.00	12181.0
76.00	3460.0
77.00	64192.0
78.00	5032.0
79.00	5573.0
80.00	4215.0
81.00	6167.0
82.00	1651.0
83.10	841.0
84.00	327.0
85.10	1037.0
86.00	2024.0
87.10	668.0
87.90	269.0
91.00	1210.0
92.00	1386.0
93.00	12169.0
94.00	710.0
95.90	269.0
97.20	335.0
98.00	9816.0
99.00	7221.0
100.00	698.0
101.00	2254.0
102.00	325.0
103.00	798.0
104.00	1988.0
104.90	2140.0
106.00	710.0
107.00	20800.0
108.00	2594.0
109.00	598.0
110.00	26384.0
111.00	4560.0
111.90	776.0
112.80	226.0
115.90	1414.0
117.00	30424.0
118.00	2189.0
119.10	158.0
120.10	440.0
122.00	1212.0
123.00	2379.0
124.00	1230.0
124.90	784.0
126.10	377.0
127.00	52496.0
128.00	4674.0
129.00	25752.0
129.90	2161.0
130.90	374.0
133.00	184.0
134.00	701.0
135.00	2395.0
136.00	579.0
137.00	1865.0
137.90	341.0
139.80	228.0
140.10	207.0
141.00	4253.0
142.00	1367.0
142.90	831.0
143.90	206.0
144.90	250.0
145.90	720.0
147.10	2130.0
148.00	6699.0

Instrument :
BNA_M
ClientSampleId :
DFTPP29

149.00	1371.0
150.20	245.0
150.80	313.0
151.80	317.0
153.00	1515.0
154.00	739.0
155.00	1904.0
156.00	2439.0
156.90	506.0
158.00	624.0
158.90	465.0
160.10	1514.0
161.00	1636.0
162.00	390.0
164.00	203.0
165.00	1670.0
165.90	1110.0
167.00	9508.0
168.00	5594.0
169.00	1023.0
169.80	198.0
171.00	268.0
172.00	960.0
173.00	886.0
174.00	1423.0
175.00	2561.0
176.10	609.0
176.90	1385.0
178.00	434.0
179.00	5593.0
180.00	3552.0
181.00	1864.0
181.80	319.0
182.30	182.0
184.00	693.0
185.00	2943.0
186.00	17864.0
187.00	5764.0
188.00	761.0
188.90	1369.0
189.90	318.0
190.90	838.0
191.90	1848.0
193.00	2371.0
194.10	460.0
195.00	170.0
196.00	2625.0
196.90	689.0
197.90	93504.0
198.90	7241.0
199.90	678.0
200.90	228.0
201.50	394.0
202.90	1436.0
204.00	5591.0
205.00	8418.0
206.00	29560.0
207.00	5057.0
208.00	1797.0
208.90	546.0
210.00	775.0
210.90	1275.0
211.80	166.0
215.00	563.0
216.00	833.0
217.00	10320.0
218.00	1236.0
220.90	3036.0
222.00	1011.0
223.00	1863.0
224.00	18376.0
225.00	4856.0
226.00	461.0
227.00	9904.0
228.00	1883.0
228.90	1662.0
229.90	370.0
231.00	864.0
233.90	777.0
235.00	593.0
236.00	405.0
237.00	1127.0
238.90	320.0
239.80	371.0
240.90	481.0
242.10	1183.0
243.00	1232.0
244.00	11755.0
245.00	1823.0
246.00	3795.0
247.00	998.0
249.00	394.0
252.00	194.0
252.90	411.0
254.10	421.0
255.00	64968.0

Instrument :
BNA_M
ClientSampleId :
DFTPP29

256.00	10738.0
256.90	875.0
258.00	5345.0
258.90	686.0
259.90	181.0
265.00	2225.0
266.00	562.0
270.90	153.0
271.90	266.0
272.90	1958.0
274.00	5316.0
275.00	26728.0
276.00	3753.0
276.90	3554.0
278.00	1135.0
281.00	228.0
283.00	470.0
283.90	240.0
284.90	357.0
290.00	171.0
292.80	647.0
296.00	12738.0
296.90	1549.0
300.90	217.0
302.00	207.0
302.90	936.0
304.00	353.0
308.00	159.0
309.00	189.0
314.00	346.0
314.90	1221.0
315.90	446.0
321.00	265.0
323.00	2180.0
324.10	571.0
327.00	755.0
328.10	343.0
332.00	286.0
332.90	343.0
333.90	1725.0
335.00	471.0
340.90	429.0
346.00	683.0
352.00	750.0
353.00	450.0
354.10	542.0
365.00	5328.0
366.00	674.0
371.00	155.0
372.00	1089.0
373.00	266.0
382.80	268.0
401.90	350.0
403.00	899.0
404.00	232.0
421.10	426.0
421.90	362.0
423.10	3097.0
424.00	1026.0
441.00	7716.0
442.00	50504.0
443.10	10771.0
444.00	1044.0

Instrument :
BNA_M
ClientSampleId :
DFTPP29

m/z	Abundance
36.90	425.0
38.00	1151.0
39.00	5233.0
40.00	356.0
44.00	365.0
44.90	154.0
49.00	803.0
50.10	19608.0
51.00	67360.0
52.10	3708.0
53.00	160.0
55.00	469.0
56.10	2136.0
57.00	4263.0
57.90	235.0
60.00	174.0
61.00	1478.0
62.00	1397.0
63.00	3786.0
64.00	551.0
65.10	1240.0
68.00	2077.0
69.00	102376.0
70.10	590.0
73.10	1525.0
74.00	13466.0
75.00	17264.0
76.00	6282.0
77.00	106816.0
78.00	6623.0
79.00	10340.0
80.00	7054.0
81.00	9855.0
82.00	1909.0
83.00	1647.0
83.90	262.0
85.00	1250.0
86.00	2830.0
87.00	983.0
87.90	313.0
91.00	1377.0
92.00	2445.0
93.00	19296.0
93.90	1170.0
94.90	328.0
95.90	547.0
97.10	366.0
98.00	15597.0
99.00	10017.0
100.00	1006.0
101.00	4289.0
101.90	337.0
103.00	1309.0
104.00	3146.0
105.00	3305.0
106.10	817.0
107.00	34776.0
108.00	4269.0
109.00	990.0
110.00	45800.0
111.00	7867.0
112.00	1079.0
113.00	534.0
115.10	203.0
116.00	1729.0
117.00	49472.0
118.00	3275.0
118.90	366.0
119.90	304.0
121.90	2741.0
123.00	3632.0
124.00	1908.0
124.90	1373.0
126.20	589.0
127.00	87856.0
128.00	7185.0
129.00	43272.0
130.00	3912.0
130.90	1018.0
131.90	361.0
133.00	309.0
134.00	1415.0
135.00	3727.0
136.10	1638.0
137.00	2297.0
138.00	446.0
138.90	203.0
139.90	435.0
141.00	6714.0
142.00	2119.0
143.00	1654.0
144.00	532.0

Instrument :
BNA_M
ClientSampleId :
DFTPP29

144.90	354.0
146.00	1531.0
147.00	3517.0
148.00	11188.0
149.00	1809.0
150.00	370.0
151.00	909.0
152.00	472.0
153.00	2467.0
154.00	1486.0
155.00	3742.0
156.00	5227.0
156.90	726.0
158.00	1071.0
159.00	845.0
160.00	1927.0
161.00	3124.0
161.90	700.0
163.00	154.0
163.90	218.0
165.00	2750.0
166.00	1902.0
167.00	17192.0
168.00	10420.0
169.00	1257.0
170.00	533.0
170.90	759.0
172.00	1465.0
173.00	1622.0
174.00	3039.0
175.00	5188.0
176.00	860.0
176.90	2609.0
178.00	943.0
179.00	10914.0
180.00	7232.0
181.00	2965.0
181.90	554.0
182.90	319.0
184.00	791.0
185.00	5024.0
186.00	33480.0
187.00	10777.0
188.00	1095.0
189.00	2900.0
190.00	391.0
190.80	1269.0
192.00	3367.0
193.00	3997.0
194.00	835.0
194.80	166.0
195.90	4461.0
196.90	1135.0
197.90	180352.0
199.00	12677.0
200.00	993.0
201.30	546.0
203.00	2265.0
204.00	11360.0
205.00	15870.0
206.00	59576.0
207.00	8043.0
208.00	3019.0
209.10	1253.0
210.00	1323.0
211.00	2413.0
212.00	527.0
213.00	161.0
214.90	744.0
215.90	1839.0
217.00	21816.0
218.00	2272.0
219.00	295.0
219.70	400.0
220.30	409.0
221.00	5297.0
222.00	2196.0
223.00	4470.0
224.00	35744.0
225.00	10208.0
226.00	1087.0
227.00	20944.0
228.00	2856.0
229.00	3595.0
229.90	437.0
230.90	1267.0
232.80	230.0
234.00	1460.0
235.10	1417.0
236.00	898.0
237.00	1923.0
238.10	361.0
238.90	719.0
240.00	704.0
241.00	1142.0
242.00	1657.0

Instrument :
BNA_M
ClientSampleId :
DFTPP29

243.00	1897.0
244.00	25800.0
245.00	3353.0
246.00	7462.0
247.00	1553.0
248.10	314.0
249.00	1069.0
250.00	164.0
250.90	263.0
252.00	352.0
252.90	573.0
254.10	1015.0
255.00	139072.0
256.00	20040.0
257.00	1904.0
258.00	11098.0
259.00	2168.0
259.90	312.0
261.10	259.0
263.90	322.0
265.00	4600.0
266.00	1019.0
269.90	187.0
271.00	263.0
272.00	446.0
273.00	4169.0
274.00	10865.0
275.00	54504.0
276.00	8086.0
277.00	6614.0
277.90	1688.0
279.10	170.0
281.10	389.0
281.90	544.0
282.90	904.0
283.90	497.0
285.10	987.0
286.00	243.0
288.80	157.0
290.00	245.0
291.10	197.0
292.10	165.0
292.90	1233.0
294.00	313.0
295.00	235.0
296.00	26192.0
297.00	3915.0
297.80	150.0
301.00	374.0
302.00	265.0
303.10	2718.0
304.00	585.0
307.90	291.0
309.00	172.0
309.90	377.0
312.80	238.0
313.90	1121.0
315.00	3129.0
316.00	1241.0
316.90	237.0
321.00	721.0
321.90	382.0
323.00	6167.0
324.00	1006.0
327.00	1629.0
328.00	558.0
331.90	347.0
332.90	538.0
334.00	3987.0
335.00	1032.0
341.00	778.0
342.10	198.0
345.90	1434.0
346.90	466.0
352.00	1670.0
353.00	937.0
354.00	1543.0
355.00	374.0
365.00	10948.0
366.00	1532.0
366.90	162.0
370.00	162.0
371.10	377.0
372.10	2629.0
373.00	756.0
383.00	671.0
384.00	292.0
390.10	285.0
391.00	229.0
392.00	282.0
400.90	196.0
402.00	958.0
402.90	1417.0
403.90	407.0
421.00	1204.0
422.00	1148.0

Instrument :
BNA_M
ClientSampleId :
DFTPP29

423.00	7221.0
424.00	2166.0
425.00	351.0
441.00	20912.0
442.10	127952.0
443.10	25736.0
444.00	2682.0
445.00	162.0

Instrument :
BNA_M
ClientSampleId :
DFTPP29

m/z	Abundance
36.90	260.0
38.00	1119.0
39.00	4090.0
39.90	243.0
43.90	370.0
49.10	492.0
50.10	18416.0
51.10	57904.0
52.00	3540.0
55.10	414.0
56.00	1835.0
57.00	3991.0
58.00	302.0
61.00	1045.0
61.90	1281.0
63.00	3313.0
64.10	669.0
65.10	1435.0
67.00	201.0
68.00	1509.0
69.00	88264.0
70.00	535.0
73.10	1519.0
74.00	12403.0
75.00	16888.0
76.00	5547.0
77.00	92056.0
78.10	5763.0
79.00	8518.0
80.00	6334.0
81.00	8232.0
82.00	2016.0
82.90	1300.0
83.90	313.0
85.00	1346.0
86.00	2789.0
87.00	1345.0
88.00	226.0
89.10	184.0
91.00	1974.0
92.00	2035.0
93.00	17064.0
93.90	1168.0
95.00	150.0
96.00	453.0
97.20	432.0
98.00	14049.0
99.00	9254.0
99.90	675.0
101.00	4016.0
103.00	1489.0
104.00	3076.0
105.00	2638.0
106.00	1065.0
107.00	30552.0
108.00	4189.0
109.00	854.0
110.00	42760.0
111.00	7962.0
111.90	1184.0
112.90	426.0
114.90	240.0
116.10	1998.0
117.00	44512.0
118.00	3356.0
119.00	370.0
120.00	459.0
122.00	2945.0
123.00	3596.0
123.90	1584.0
125.00	1197.0
126.10	441.0
127.00	78800.0
128.00	5857.0
129.00	40248.0
130.00	3609.0
130.90	530.0
131.90	361.0
132.80	190.0
134.00	1197.0
135.00	3204.0
136.00	1426.0
137.00	1861.0
137.90	399.0
138.90	159.0
140.00	746.0
141.00	6794.0
142.00	1940.0
143.00	994.0
143.90	345.0
145.00	338.0
145.90	1225.0

Instrument :
BNA_M
ClientSampleId :
DFTPP29

147.00	3223.0
148.00	10129.0
149.00	1714.0
149.80	347.0
151.00	738.0
152.00	340.0
153.00	2002.0
154.00	1505.0
155.00	3417.0
156.00	5266.0
157.00	440.0
157.90	1091.0
158.90	878.0
160.00	2168.0
161.00	2779.0
162.00	1088.0
162.90	165.0
163.90	334.0
165.00	2599.0
166.00	2104.0
167.00	16896.0
168.00	9605.0
169.00	1231.0
169.90	526.0
170.90	789.0
171.90	1305.0
173.00	1826.0
174.00	2550.0
175.00	5721.0
176.00	834.0
177.00	2556.0
178.00	1010.0
179.00	10773.0
180.00	6773.0
181.00	2828.0
181.80	409.0
182.20	338.0
182.90	231.0
184.00	1108.0
185.00	4888.0
186.00	35000.0
187.00	9186.0
188.00	1003.0
189.00	3205.0
189.90	454.0
190.90	1161.0
192.00	3730.0
193.00	4277.0
194.00	641.0
194.90	347.0
196.00	4923.0
197.10	1249.0
197.90	175872.0
199.00	11884.0
199.90	1414.0
201.50	540.0
203.00	2534.0
204.00	9239.0
205.00	17600.0
206.00	59656.0
207.00	9687.0
208.00	3219.0
209.00	913.0
210.00	1056.0
211.10	2739.0
212.00	381.0
214.90	1008.0
216.00	1886.0
217.00	20880.0
218.00	2119.0
219.00	265.0
221.00	5653.0
222.00	2561.0
223.00	4203.0
224.00	36792.0
225.00	9666.0
226.00	1148.0
227.00	22872.0
228.00	2854.0
229.00	3935.0
229.90	564.0
230.90	1174.0
232.10	326.0
232.90	446.0
234.00	1511.0
235.00	1253.0
236.00	842.0
237.00	1861.0
238.00	282.0
239.00	955.0
240.00	561.0
241.00	1452.0
242.00	2449.0
243.10	2132.0
244.00	27128.0
245.00	3606.0

Instrument :
BNA_M
ClientSampleId :
DFTPP29

246.00	7499.0
247.00	1848.0
248.10	165.0
249.00	990.0
250.00	228.0
250.80	202.0
251.80	300.0
253.00	779.0
254.00	1012.0
255.00	147456.0
256.00	21536.0
257.00	1920.0
258.00	12789.0
259.00	1713.0
260.10	241.0
260.90	342.0
263.80	368.0
265.00	5547.0
265.90	507.0
269.90	154.0
271.00	460.0
272.00	525.0
273.00	4270.0
274.00	11781.0
275.00	60968.0
276.00	7967.0
277.00	8140.0
278.00	1230.0
278.90	259.0
281.00	608.0
283.00	803.0
283.90	367.0
285.00	801.0
289.00	327.0
289.90	175.0
291.10	150.0
291.90	330.0
293.00	1691.0
293.90	458.0
295.10	733.0
296.00	27448.0
297.00	3829.0
297.90	285.0
301.00	279.0
302.10	352.0
303.00	2595.0
304.00	691.0
308.00	369.0
309.80	195.0
312.90	367.0
314.00	1003.0
315.00	2714.0
316.00	1169.0
316.90	192.0
321.10	707.0
321.90	424.0
323.00	6492.0
323.90	1082.0
327.00	1579.0
327.90	684.0
331.90	403.0
333.00	709.0
334.00	4785.0
335.10	1279.0
341.00	696.0
341.80	168.0
346.00	1593.0
346.90	411.0
352.00	2262.0
353.00	856.0
354.00	1842.0
355.10	782.0
365.00	13556.0
366.00	1682.0
370.10	152.0
371.00	508.0
372.10	3143.0
373.00	844.0
383.10	874.0
384.00	529.0
390.00	400.0
391.10	232.0
392.10	196.0
400.90	403.0
402.00	1157.0
403.00	1887.0
404.00	799.0
421.10	1852.0
422.00	1654.0
423.00	8972.0
424.00	2662.0
425.10	291.0
441.00	26200.0
442.10	167616.0
443.10	33672.0
444.10	2762.0

Instrument :
BNA_M
ClientSampleId :
DFTPP29