

Data Path : Z:\SVOASRV\HPCHEM1\BNA M\DATA\BM082118\
 Data File : BM016504.D
 Acq On : 22 Aug 2018 03:31
 Operator : SJ/JU
 Sample : PB112247BL
 Misc :
 ALS Vial : 16 Sample Multiplier: 1

Instrument :
 BNA_M
 ClientSampleId :
 PB112247BL

Quant Time: Aug 22 04:50:12 2018
 Quant Method : Z:\SVOASRV\HPCHEM1\BNA M\METHODS\8270-BM082118.M
 Quant Title : ASP BNA STANDARDS FOR 5 POINT CALIBRATION
 QLast Update : Tue Aug 21 16:31:22 2018
 Response via : Initial Calibration

Internal Standards	R.T.	QIon	Response	Conc	Units	Dev(Min)
1) 1,4-Dichlorobenzene-d4	8.02	152	205843	20.00	ng	0.00
21) Naphthalene-d8	10.83	136	609286	20.00	ng	0.00
38) Acenaphthene-d10	14.66	164	489212	20.00	ng	0.00
63) Phenanthrene-d10	17.40	188	1668078	20.00	ng	0.00
75) Chrysene-d12	21.54	240	2266210	20.00	ng	0.00
86) Perylene-d12	23.83	264	2399780	20.00	ng	0.00
System Monitoring Compounds						
5) 2-Fluorophenol	5.56	112	1805061	171.84	ng	0.00
7) Phenol-d6	7.20	99	2162091	155.54	ng	0.00
23) Nitrobenzene-d5	9.21	82	1634946	122.52	ng	0.00
41) 2,4,6-Tribromophenol	16.16	330	3397782	248.46	ng	0.00
44) 2-Fluorobiphenyl	13.28	172	6945507	136.47	ng	0.00
78) Terphenyl-d14	19.99	244	13170600	123.01	ng	0.00

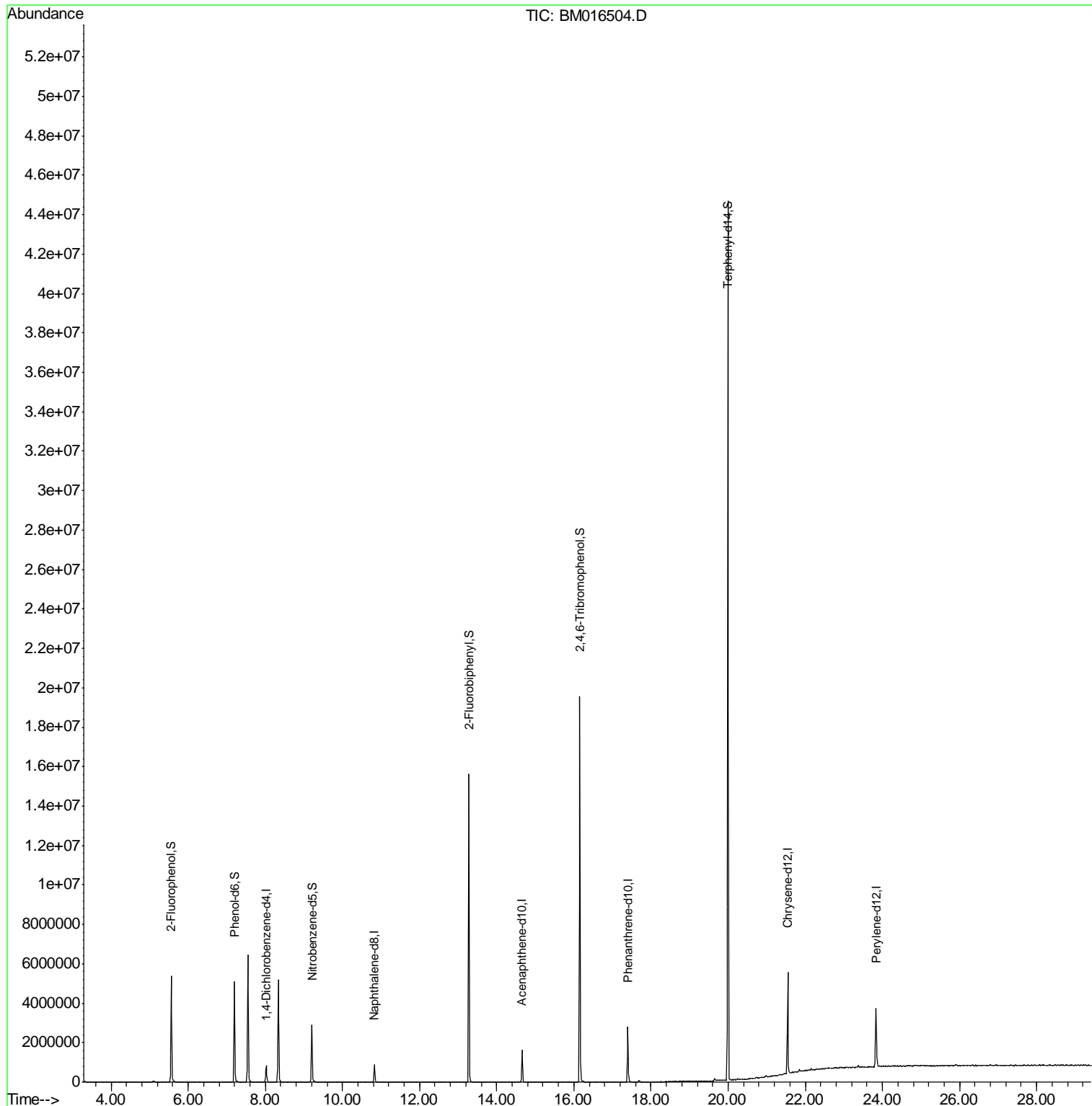
Target Compounds Qvalue

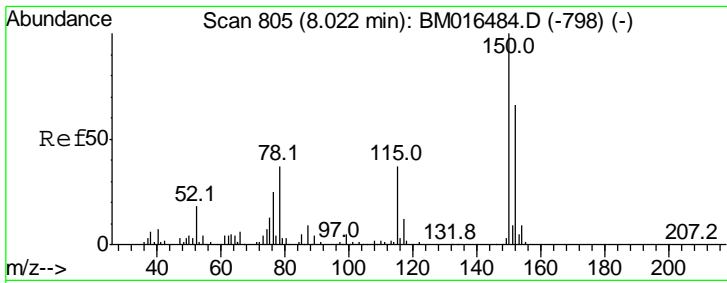
(#) = qualifier out of range (m) = manual integration (+) = signals summed

Data Path : Z:\SVOASRV\HPCHEM1\BNA M\DATA\BM082118\
Data File : BM016504.D
Acq On : 22 Aug 2018 03:31
Operator : SJ/JU
Sample : PB112247BL
Misc :
ALS Vial : 16 Sample Multiplier: 1

Instrument :
BNA_M
ClientSampleId :
PB112247BL

Quant Time: Aug 22 04:50:12 2018
Quant Method : Z:\SVOASRV\HPCHEM1\BNA M\METHODS\8270-BM082118.M
Quant Title : ASP BNA STANDARDS FOR 5 POINT CALIBRATION
QLast Update : Tue Aug 21 16:31:22 2018
Response via : Initial Calibration

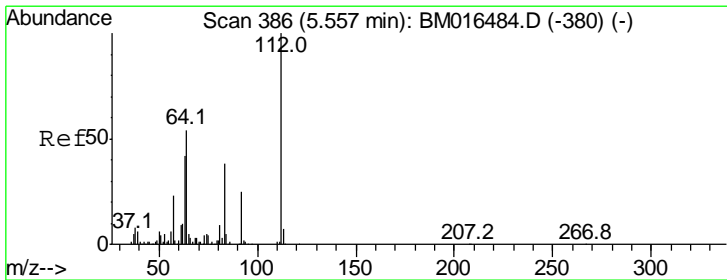
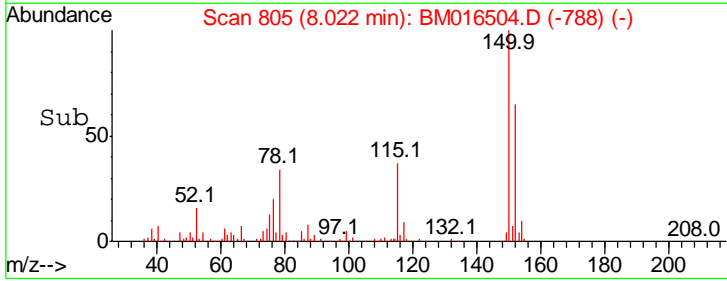
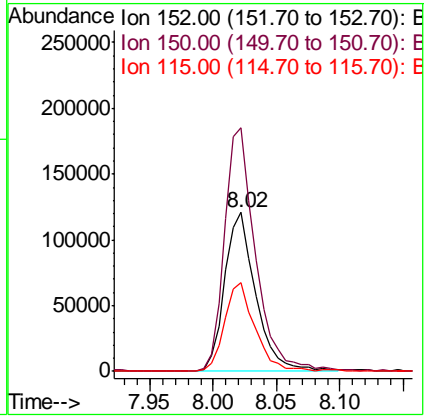
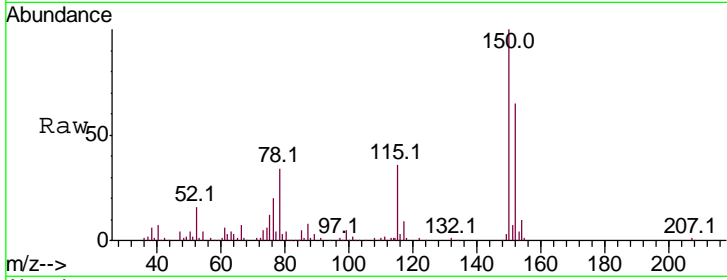




#1
 1,4-Dichlorobenzene-d4
 Concen: 20.000 ng
 RT: 8.02 min Scan# 805
 Delta R.T. -0.00 min
 Lab File: BM016504.D
 Acq: 22 Aug 2018 03:31

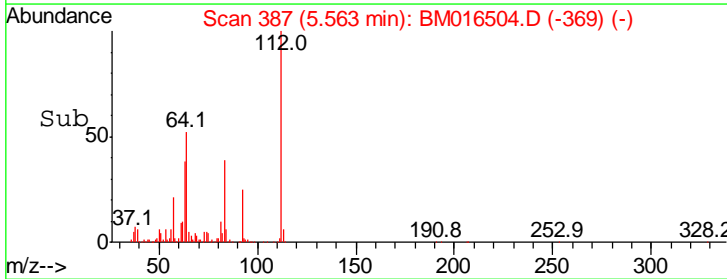
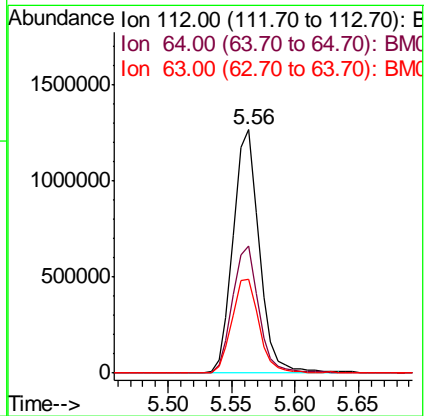
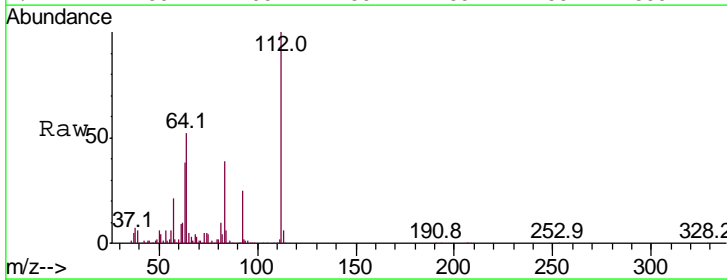
Instrument :
 BNA_M
ClientSampled :
 PB112247BL

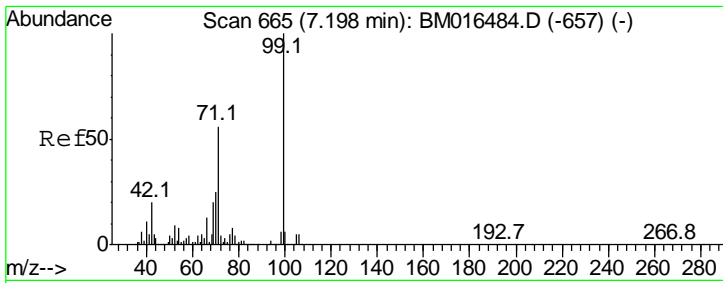
Tgt Ion	Resp	Lower	Upper
152	100		
150	153.4	119.5	179.3
115	55.8	43.0	64.4



#5
 2-Fluorophenol
 Concen: Below ng
 RT: 5.56 min Scan# 387
 Delta R.T. 0.01 min
 Lab File: BM016504.D
 Acq: 22 Aug 2018 03:31

Tgt Ion	Resp	Lower	Upper
112	100		
64	52.2	38.6	57.8
63	38.5	19.3	28.9#

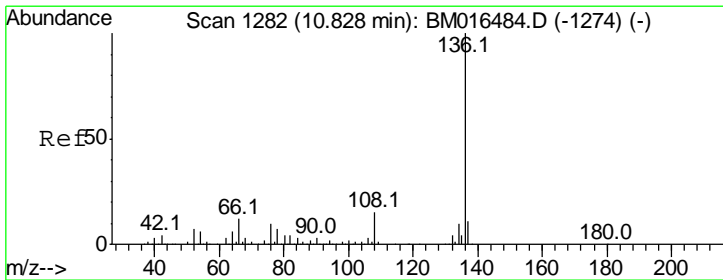
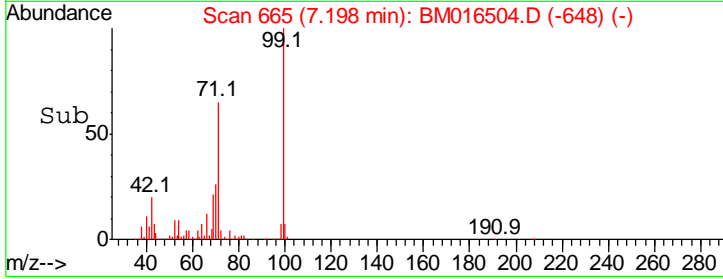
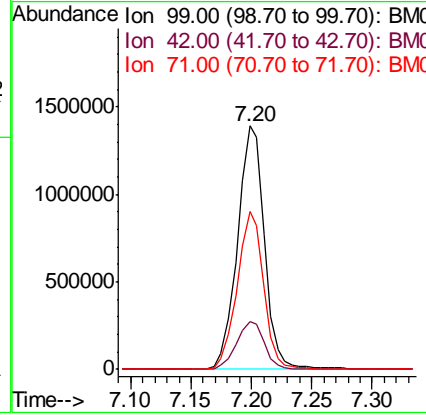
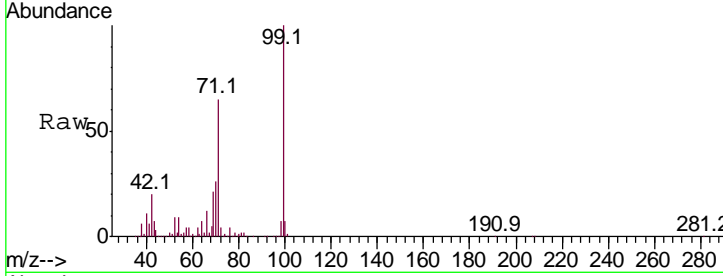




#7
 Phenol-d6
 Concen: Below ng
 RT: 7.20 min Scan# 665
 Delta R.T. -0.00 min
 Lab File: BM016504.D
 Acq: 22 Aug 2018 03:31

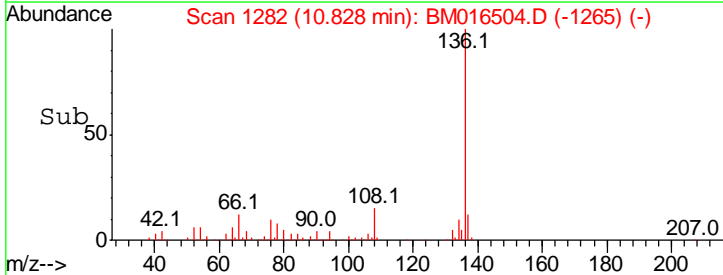
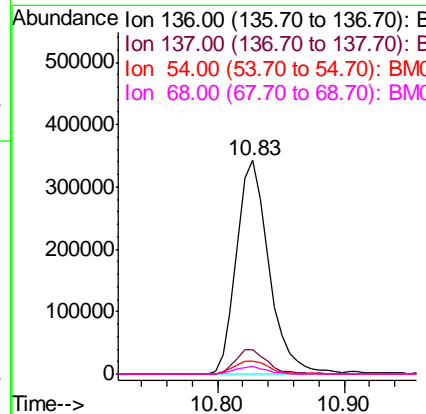
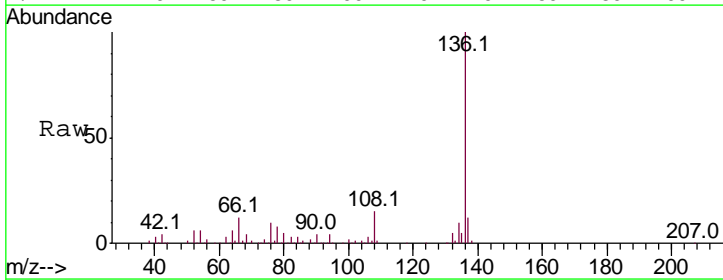
Instrument :
 BNA_M
 ClientSampled :
 PB112247BL

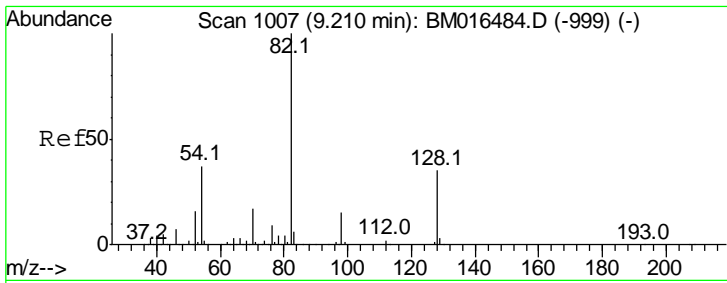
Tgt Ion	Resp	Lower	Upper
99	100		
42	19.8	11.0	16.4#
71	64.7	23.4	35.2#



#21
 Naphthalene-d8
 Concen: 20.000 ng
 RT: 10.83 min Scan# 1282
 Delta R.T. -0.00 min
 Lab File: BM016504.D
 Acq: 22 Aug 2018 03:31

Tgt Ion	Resp	Lower	Upper
136	100		
137	11.6	8.7	13.1
54	5.9	4.6	6.8
68	3.6	3.7	5.5#

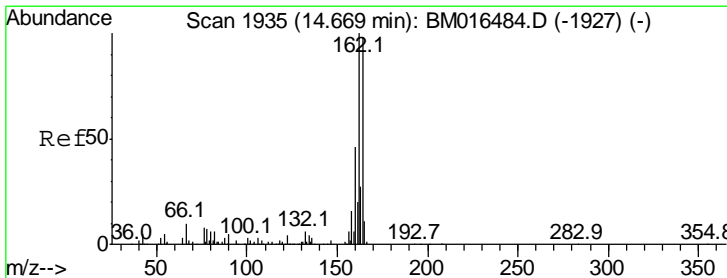
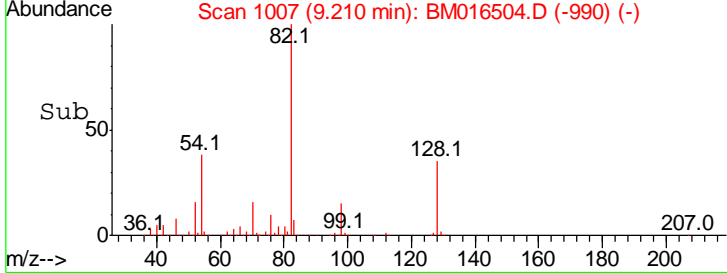
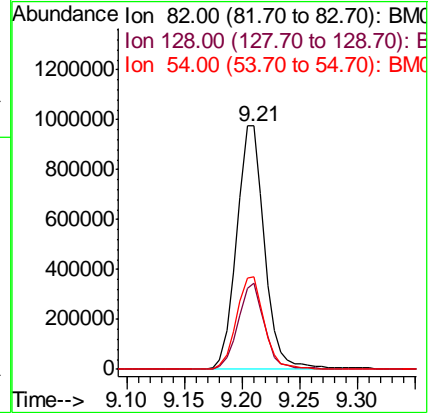
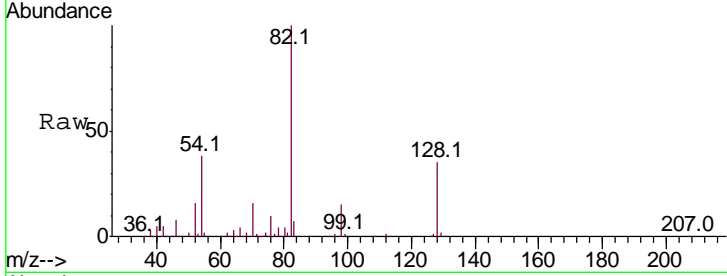




#23
 Nitrobenzene-d5
 Concen: N.D. ng
 RT: 9.21 min Scan# 1007
 Delta R.T. -0.00 min
 Lab File: BM016504.D
 Acq: 22 Aug 2018 03:31

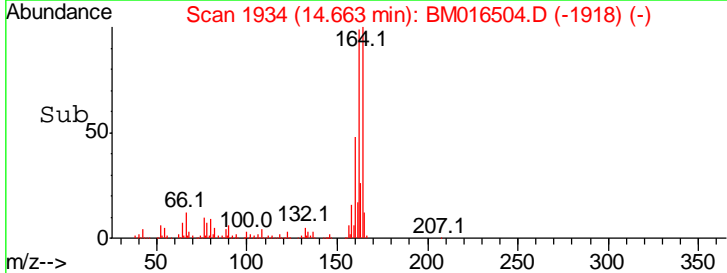
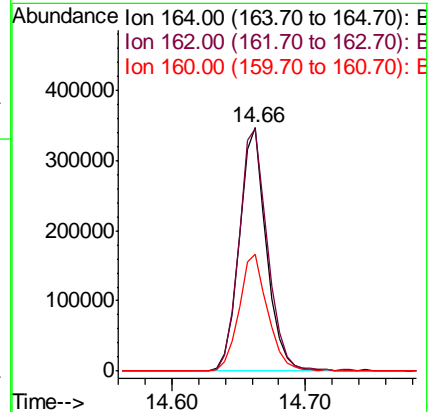
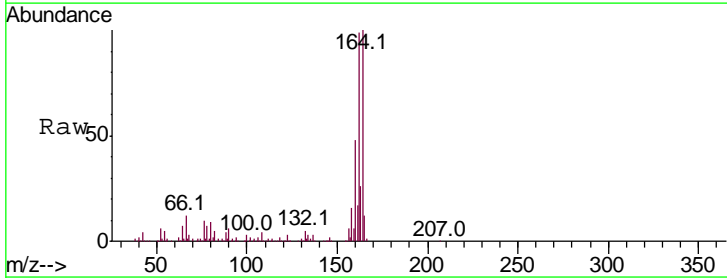
Instrument :
 BNA_M
 ClientSampleID :
 PB112247BL

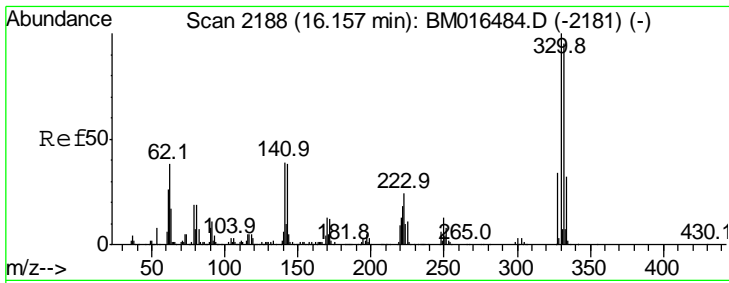
Tgt Ion	Resp	Lower	Upper
82	100		
128	35.3	32.8	49.2
54	37.9	40.6	60.8#



#38
 Acenaphthene-d10
 Concen: 20.000 ng
 RT: 14.66 min Scan# 1934
 Delta R.T. -0.01 min
 Lab File: BM016504.D
 Acq: 22 Aug 2018 03:31

Tgt Ion	Resp	Lower	Upper
164	100		
162	99.4	82.4	123.6
160	48.0	35.8	53.6



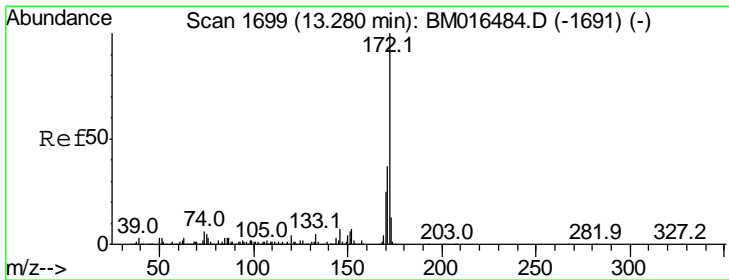
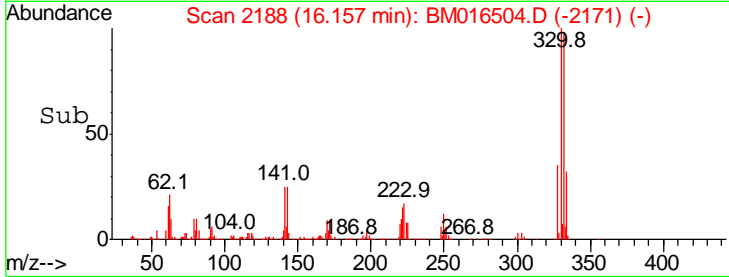
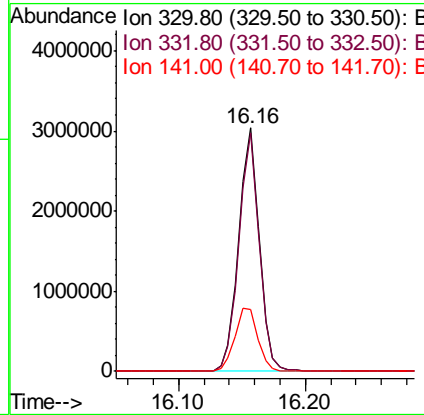
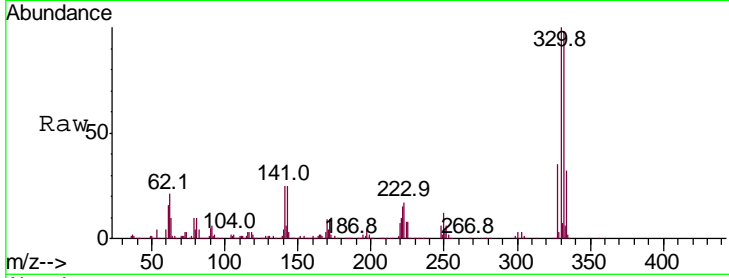


#41
 2,4,6-Tribromophenol
 Concen: N.D. ng
 RT: 16.16 min Scan# 2188
 Delta R.T. 0.00 min
 Lab File: BM016504.D
 Acq: 22 Aug 2018 03:31

Instrument :
 BNA_M
 ClientSampleId :
 PB112247BL

Tgt Ion: 330 Resp: 3397782

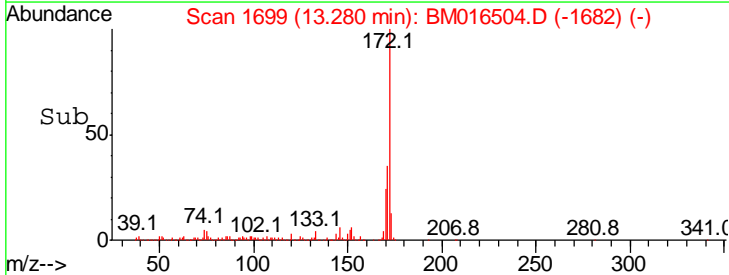
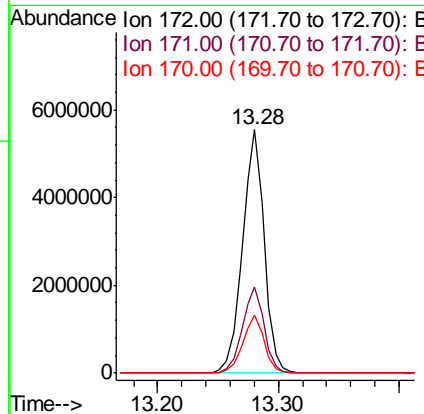
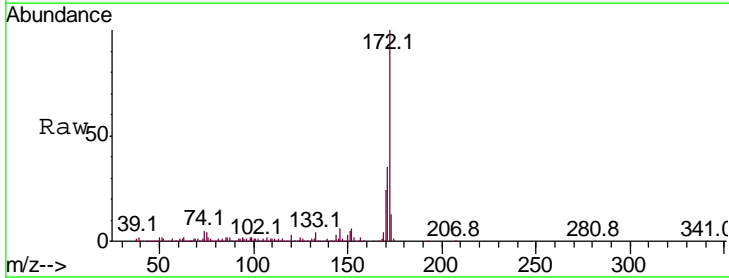
Ion	Ratio	Lower	Upper
330	100		
332	96.7	0.0	0.0#
141	29.3	0.0	0.0#

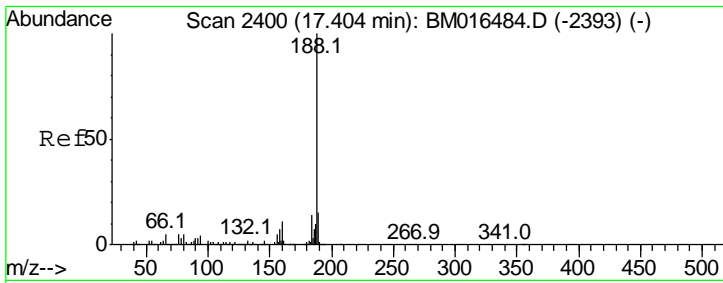


#44
 2-Fluorobiphenyl
 Concen: N.D. ng
 RT: 13.28 min Scan# 1699
 Delta R.T. -0.00 min
 Lab File: BM016504.D
 Acq: 22 Aug 2018 03:31

Tgt Ion: 172 Resp: 6945507

Ion	Ratio	Lower	Upper
172	100		
171	35.2	28.5	42.7
170	23.8	18.8	28.2



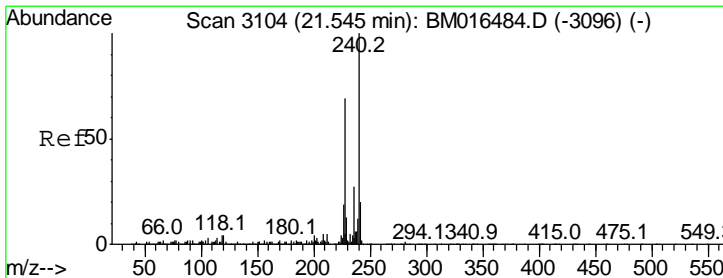
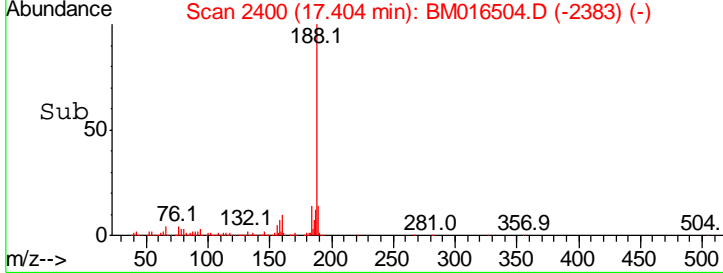
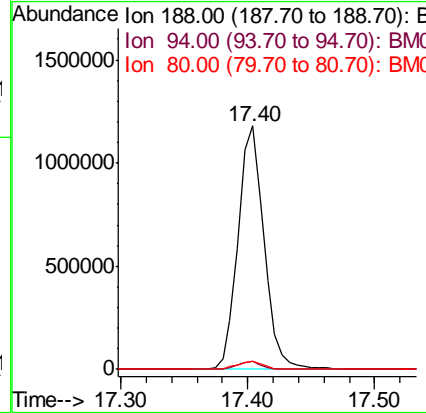
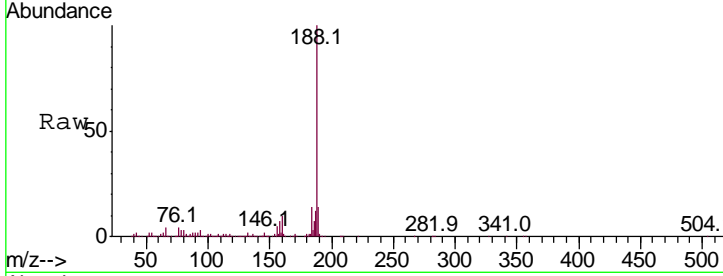


#63
 Phenanthrene-d10
 Concen: 20.000 ng
 RT: 17.40 min Scan# 2400
 Delta R.T. -0.00 min
 Lab File: BM016504.D
 Acq: 22 Aug 2018 03:31

Instrument :
 BNA_M
ClientSampled :
 PB112247BL

Tgt Ion:188 Resp: 1668078

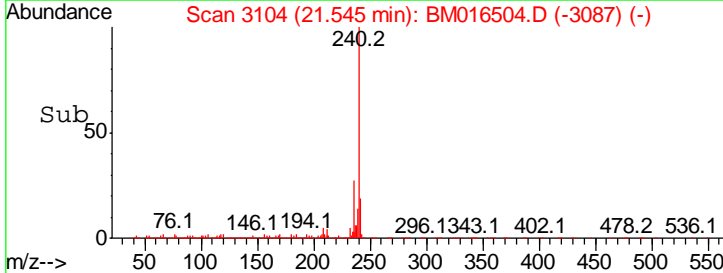
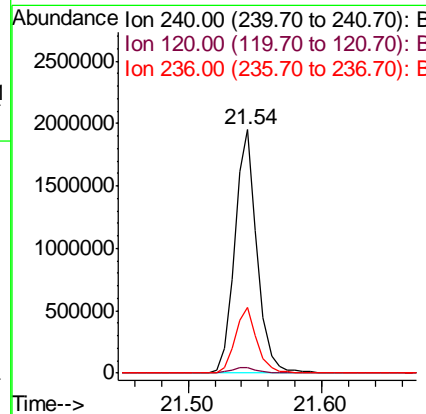
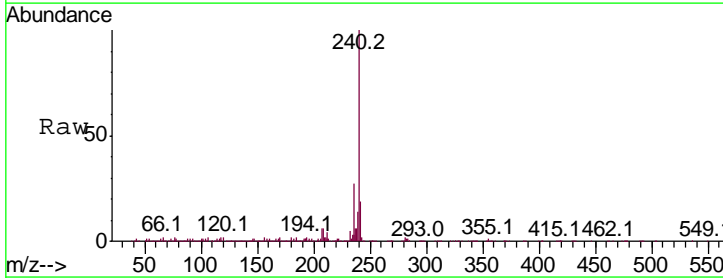
Ion	Ratio	Lower	Upper
188	100		
94	3.1	8.7	13.1#
80	3.3	9.3	13.9#

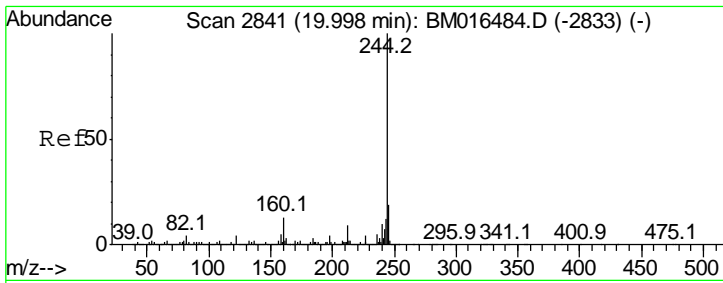


#75
 Chrysene-d12
 Concen: 20.000 ng
 RT: 21.54 min Scan# 3104
 Delta R.T. -0.00 min
 Lab File: BM016504.D
 Acq: 22 Aug 2018 03:31

Tgt Ion:240 Resp: 2266210

Ion	Ratio	Lower	Upper
240	100		
120	2.3	8.2	12.2#
236	27.0	20.0	30.0



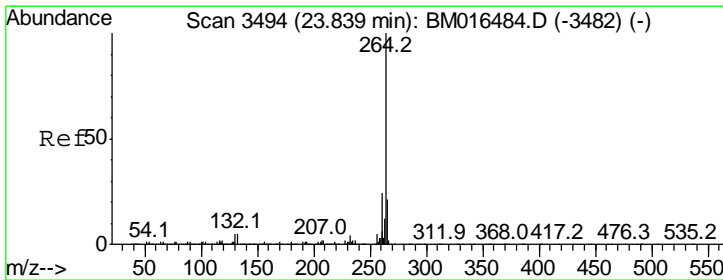
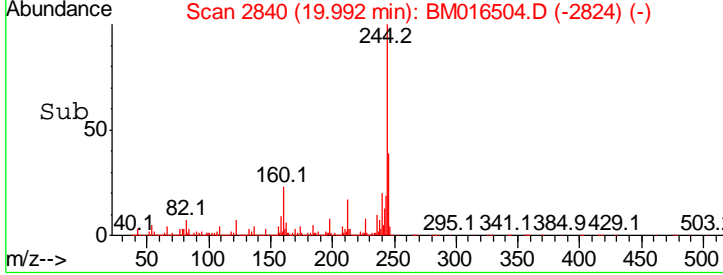
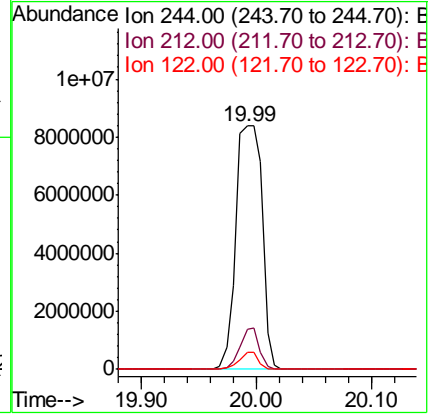
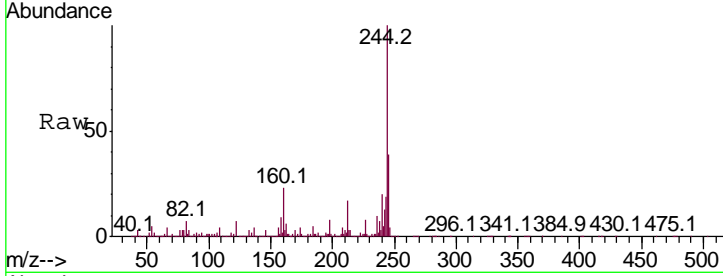


#78
 Terphenyl-d14
 Concen: N.D. ng
 RT: 19.99 min Scan# 2840
 Delta R.T. -0.01 min
 Lab File: BM016504.D
 Acq: 22 Aug 2018 03:31

Instrument :
 BNA_M
ClientSampled :
 PB112247BL

Tgt Ion: 244 Resp: 13170600

Ion	Ratio	Lower	Upper
244	100		
212	16.7	4.9	7.3#
122	7.2	6.2	9.4



#86
 Perylene-d12
 Concen: 20.000 ng
 RT: 23.83 min Scan# 3493
 Delta R.T. -0.01 min
 Lab File: BM016504.D
 Acq: 22 Aug 2018 03:31

Tgt Ion: 264 Resp: 2399780

Ion	Ratio	Lower	Upper
264	100		
260	23.9	18.6	27.8
265	21.9	17.3	25.9

