

Data File : BM022267.D
 Acq On : 23 Aug 2019 21:53
 Operator : HP/JU
 Sample : K4337-19
 Misc :
 ALS Vial : 20 Sample Multiplier: 1

Instrument :
 BNA_M
 ClientSampleId :
 C0AB6

Quant Time: Aug 24 01:13:07 2019
 Quant Method : Z:\SVOASRV\HPCHEM1\BNA_M\METHODS\SOM-EPA-BM082219MA.M
 Quant Title : SVOA CALIBRATION
 QLast Update : Sat Aug 24 01:09:04 2019
 Response via : Initial Calibration

Internal Standards	R.T.	QIon	Response	Conc	Units	Dev(Min)
1) 1,4-Dichlorobenzene-d4	7.56	152	32970	20.00	ng/ul	0.00
18) Naphthalene-d8	10.34	136	148668	20.00	ng/ul	0.00
35) Acenaphthene-d10	14.22	164	108869	20.00	ng/ul	0.00
61) Phenanthrene-d10	16.97	188	265182	20.00	ng/ul	0.00
77) Chrysene-d12	21.19	240	308758	20.00	ng/ul	0.00
85) Perylene-d12	23.38	264	288647	20.00	ng/ul	0.00

System Monitoring Compounds

3) 1,4-Dioxane-d8	3.15	96	392	0.53	ng/uL	0.01
5) Phenol-d5	6.76	99	13999	4.92	ng/ul	0.00
7) Bis-(2-Chloroethyl)ether-d	6.92	67	39483	23.85	ng/ul	0.00
9) 2-Chlorophenol-d4	7.09	132	46056	20.05	ng/ul	0.00
13) 4-Methylphenol-d8	8.27	113	31315	12.70	ng/ul	0.00
19) Nitrobenzene-d5	8.73	128	29579	26.68	ng/ul	0.00
22) 2-Nitrophenol-d4	9.44	143	35341	27.39	ng/ul	0.00
26) 2,4-Dichlorophenol-d3	9.97	165	66618	25.37	ng/ul	0.00
29) 4-Chloroaniline-d4	10.52	131	6747	2.11	ng/ul	0.02
43) Dimethylphthalate-d6	13.65	166	304199	31.73	ng/ul	0.00
46) Acenaphthylene-d8	13.90	160	313503	30.36	ng/ul	0.00
51) 4-Nitrophenol-d4	14.50	143	8459	5.96	ng/ul	0.02
57) Fluorene-d10	15.22	176	257845	32.43	ng/ul	0.00
62) 4,6-Dinitro-2-methylphenol	15.38	200	49779	24.33	ng/ul	0.00
70) Anthracene-d10	17.07	188	465060	33.12	ng/ul	0.00
78) Pyrene-d10	19.38	212	608381	37.91	ng/ul	0.00
89) Benzo(a)pyrene-d12	23.24	264	552963	34.87	ng/ul	0.00

Target Compounds

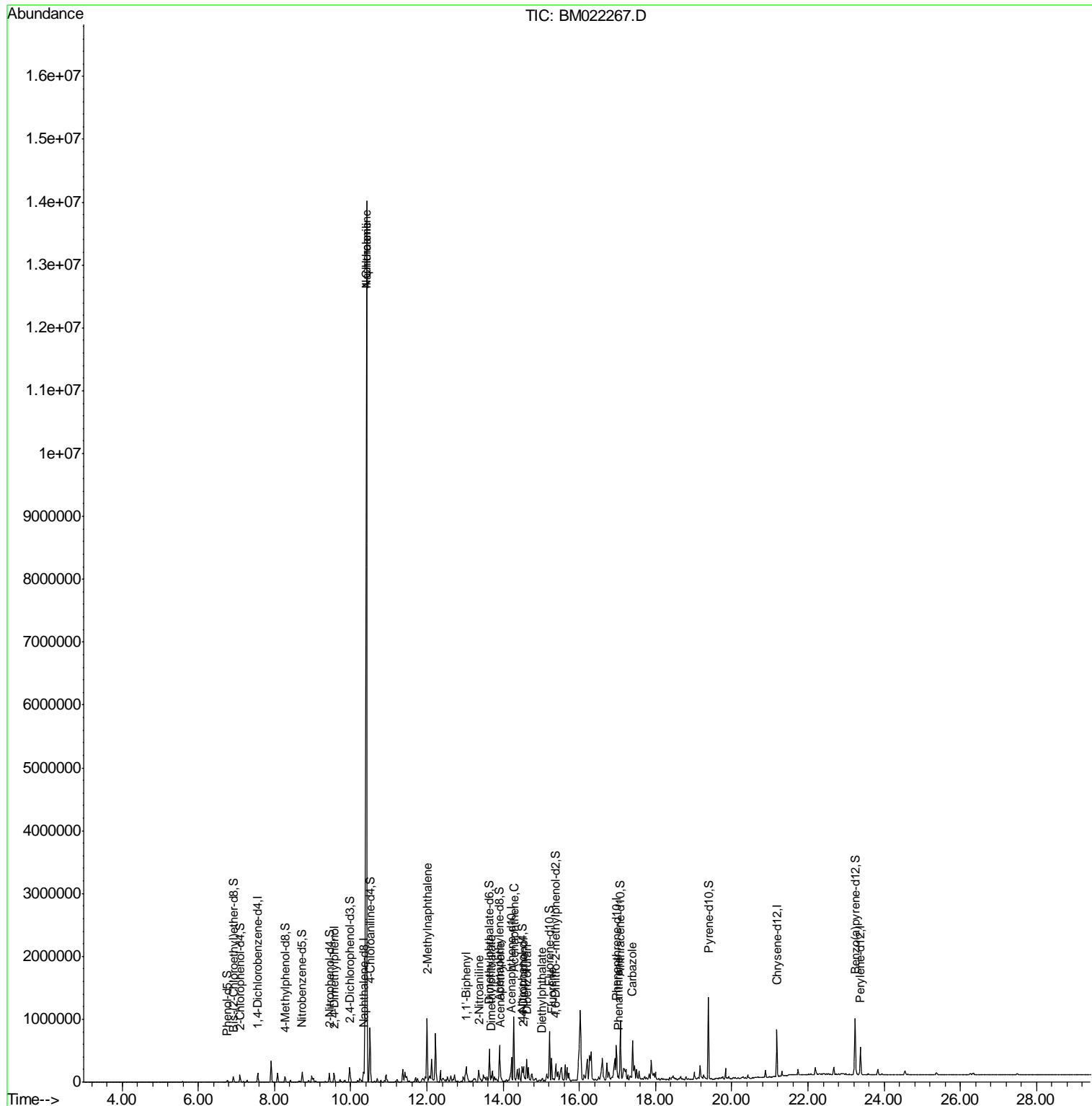
					Qvalue
24) 2,4-Dimethylphenol	9.56	107	40550	12.202	ng/ul 92
28) Naphthalene	10.42	128	11702747	1426.392	ng/ul 97
30) 4-Chloroaniline	10.42	127	1632341	490.952	ng/ul# 9
34) 2-Methylnaphthalene	12.00	142	379193	59.986	ng/ul 95
40) 1,1'-Biphenyl	13.03	154	73341	8.278	ng/ul 99
42) 2-Nitroaniline	13.36	65	6679	3.165	ng/ul# 28
44) Dimethylphthalate	13.69	163	45023	4.615	ng/ul 99
47) Acenaphthylene	13.93	152	13786	1.287	ng/ul# 94
49) Acenaphthene	14.28	153	361753	47.583	ng/ul 99
50) 2,4-Dinitrophenol	14.52	184	1942	1.734	ng/ul# 1
53) Dibenzofuran	14.62	168	158915	14.034	ng/ul 98
56) Diethylphthalate	15.02	149	15258	1.458	ng/ul# 71
58) Fluorene	15.27	166	125952	13.206	ng/ul 99
69) Phenanthrene	17.02	178	23269	1.467	ng/ul 95
74) Carbazole	17.40	167	302318	20.275	ng/ul 99

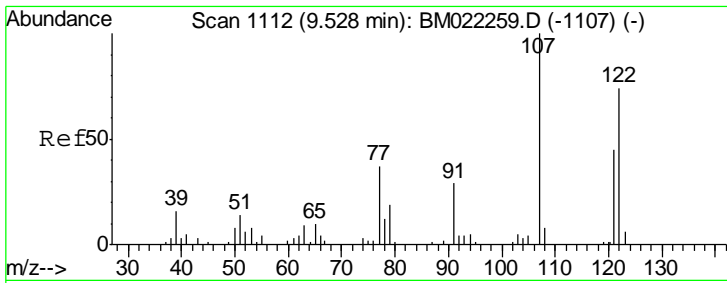
(#) = qualifier out of range (m) = manual integration (+) = signals summed

Data File : BM022267.D
Acq On : 23 Aug 2019 21:53
Operator : HP/JU
Sample : K4337-19
Misc :
ALS Vial : 20 Sample Multiplier: 1

Instrument :
BNA_M
ClientSampled :
C0AB6

Quant Time: Aug 24 01:13:07 2019
Quant Method : Z:\SVOASRV\HPCHEM1\BNA_M\METHODS\SOM-EPA-BM082219MA.M
Quant Title : SVOA CALIBRATION
QLast Update : Sat Aug 24 01:09:04 2019
Response via : Initial Calibration

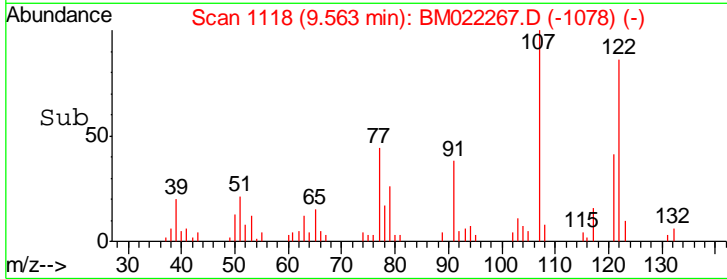
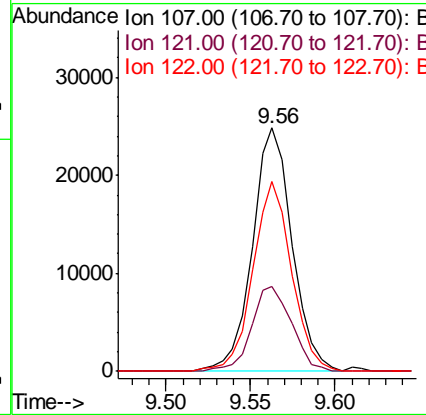
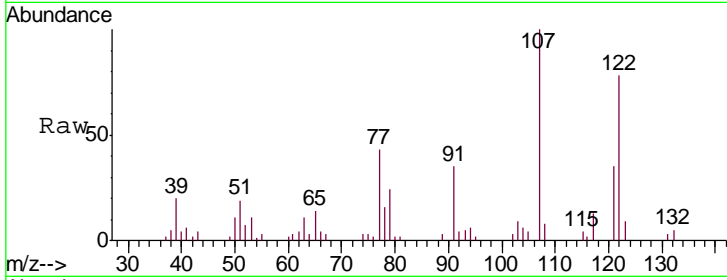




#24
 2,4-Dimethylphenol
 Concen: 12.202 ng/ul
 RT: 9.56 min Scan# 1118
 Delta R.T. 0.04 min
 Lab File: BM022267.D
 Acq: 23 Aug 2019 21:53

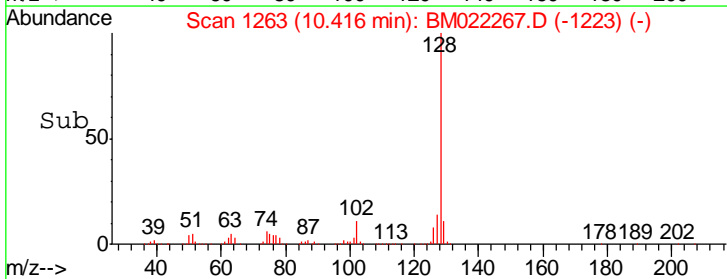
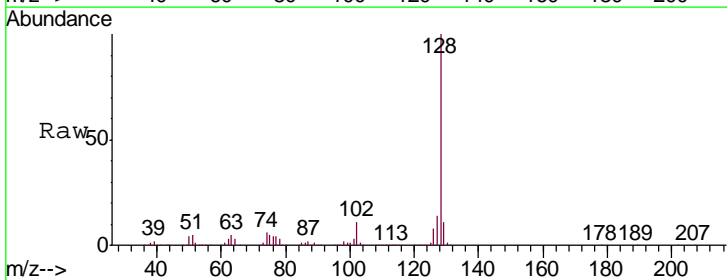
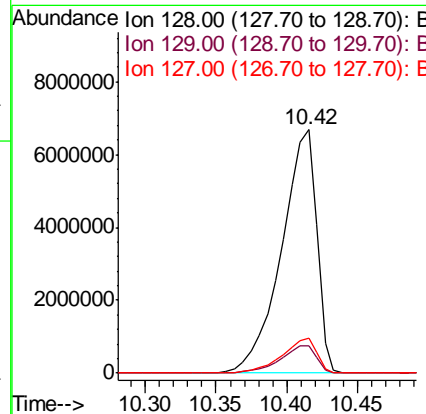
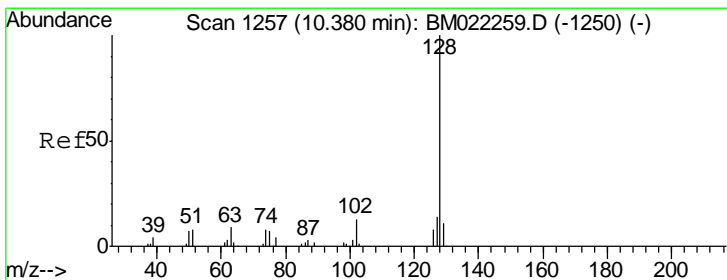
Instrument :
 BNA_M
 ClientSampled :
 C0AB6

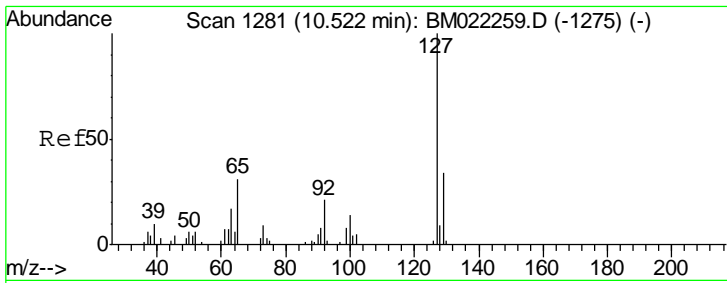
Tgt Ion	Resp	Lower	Upper
107	40550		
121	34.9	33.6	50.4
122	78.1	58.0	87.0



#28
 Naphthalene
 Concen: 1426.392 ng/ul
 RT: 10.42 min Scan# 1263
 Delta R.T. 0.04 min
 Lab File: BM022267.D
 Acq: 23 Aug 2019 21:53

Tgt Ion	Resp	Lower	Upper
128	11702747		
129	11.4	8.6	13.0
127	14.3	10.4	15.6

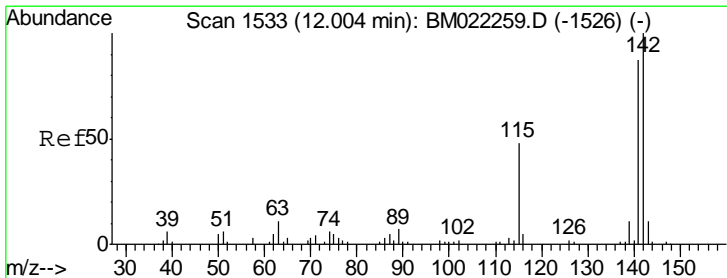
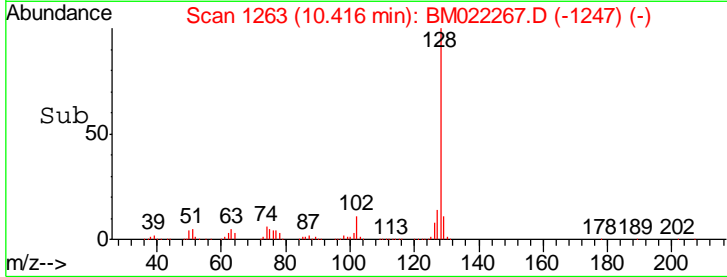
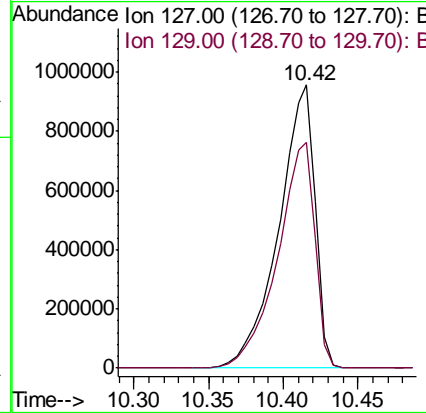
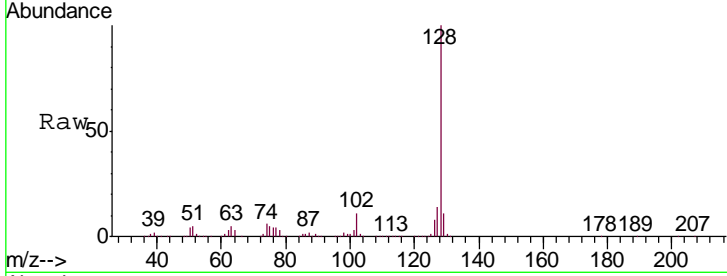




#30
 4-Chloroaniline
 Concen: 490.952 ng/ul
 RT: 10.42 min Scan# 1263
 Delta R.T. -0.11 min
 Lab File: BM022267.D
 Acq: 23 Aug 2019 21:53

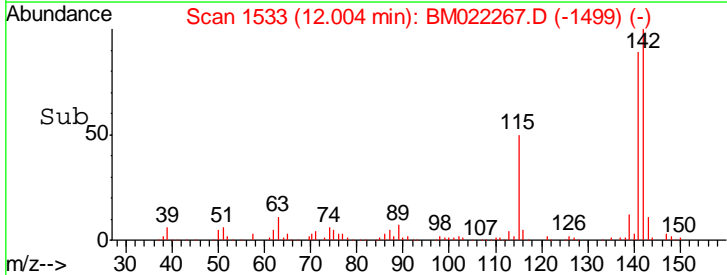
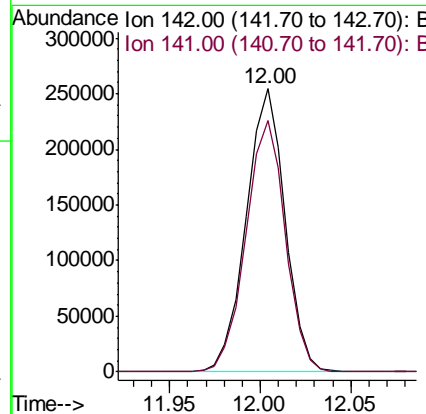
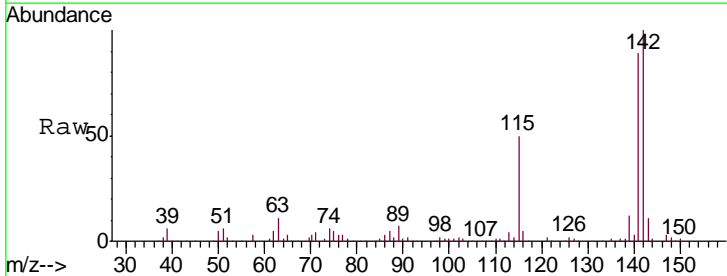
Instrument :
 BNA_M
 ClientSampled :
 C0AB6

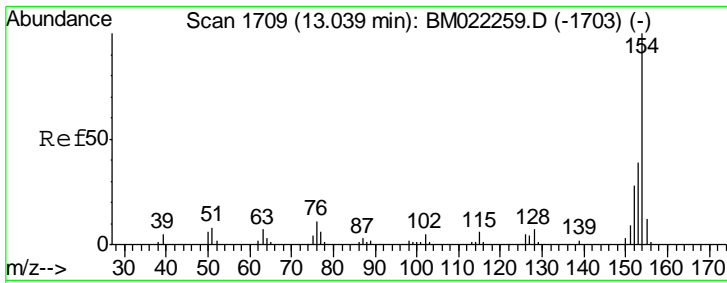
Tgt Ion:127 Resp: 1632341
 Ion Ratio Lower Upper
 127 100
 129 79.7 24.2 36.4#



#34
 2-Methylnaphthalene
 Concen: 59.986 ng/ul
 RT: 12.00 min Scan# 1533
 Delta R.T. 0.00 min
 Lab File: BM022267.D
 Acq: 23 Aug 2019 21:53

Tgt Ion:142 Resp: 379193
 Ion Ratio Lower Upper
 142 100
 141 88.8 75.1 112.7

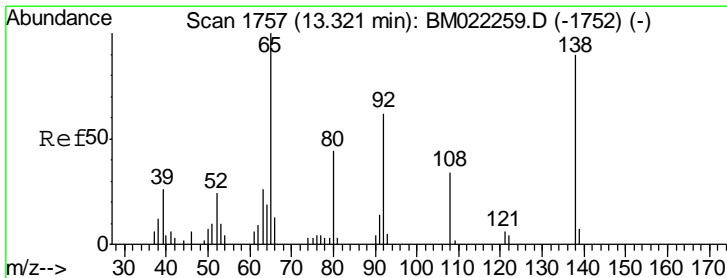
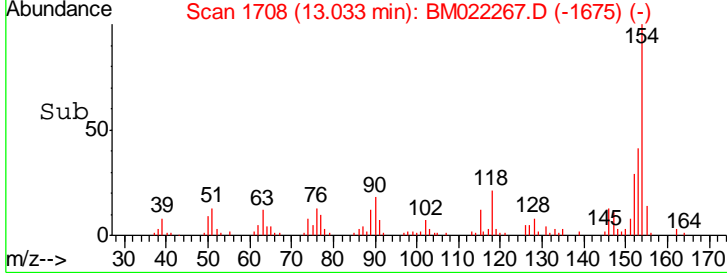
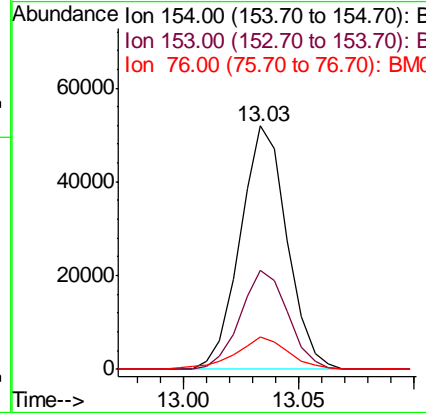
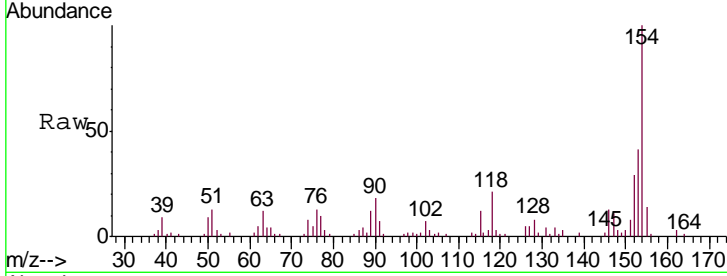




#40
 1,1'-Biphenyl
 Concen: 8.278 ng/ul
 RT: 13.03 min Scan# 1708
 Delta R.T. -0.01 min
 Lab File: BM022267.D
 Acq: 23 Aug 2019 21:53

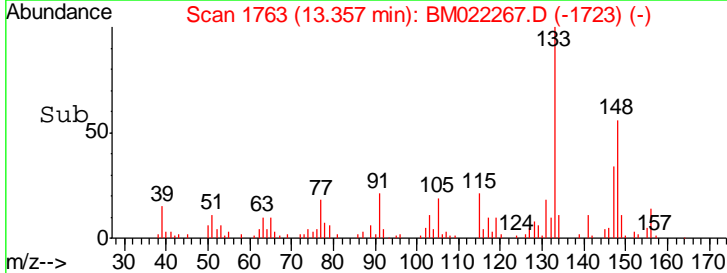
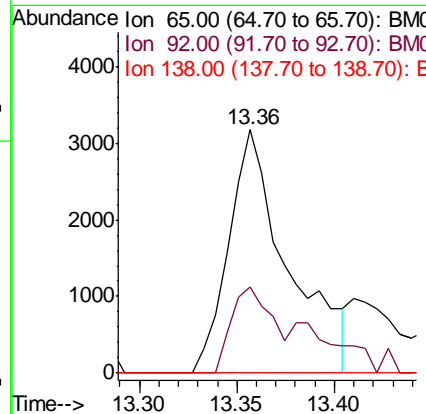
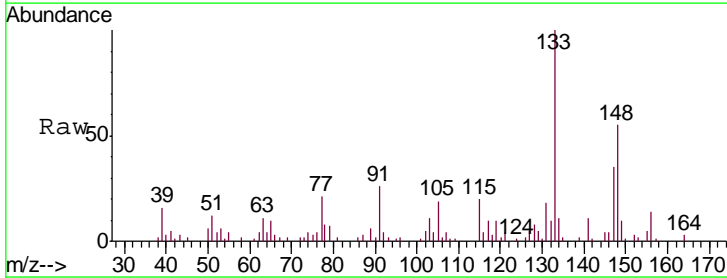
Instrument :
 BNA_M
 ClientSampled :
 C0AB6

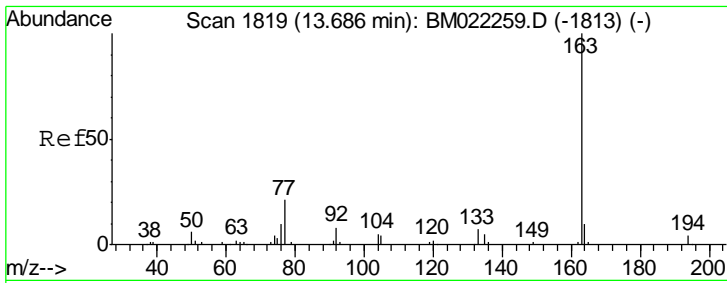
Tgt Ion	Resp	Lower	Upper
154	100		
153	40.5	32.5	48.7
76	13.5	9.2	13.8



#42
 2-Nitroaniline
 Concen: 3.165 ng/ul
 RT: 13.36 min Scan# 1763
 Delta R.T. 0.04 min
 Lab File: BM022267.D
 Acq: 23 Aug 2019 21:53

Tgt Ion	Resp	Lower	Upper
65	100		
92	35.5	51.2	76.8#
138	0.0	73.6	110.4#

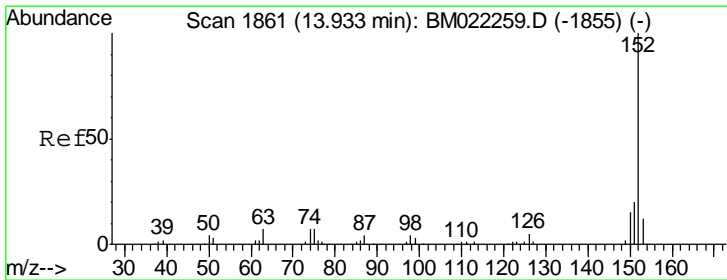
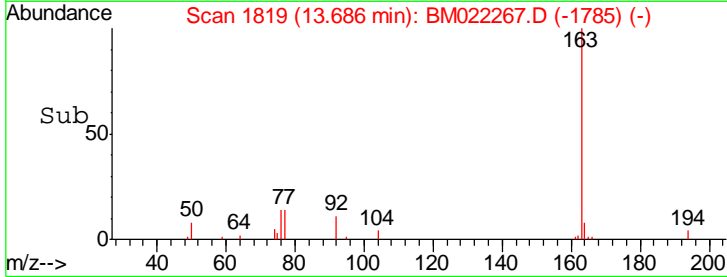
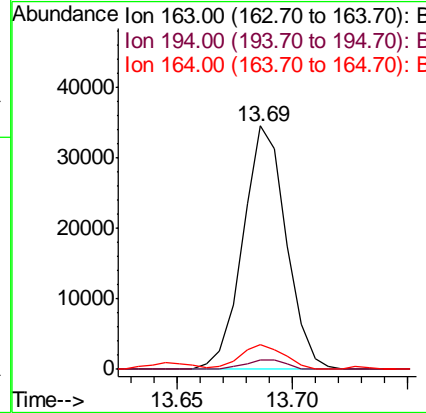
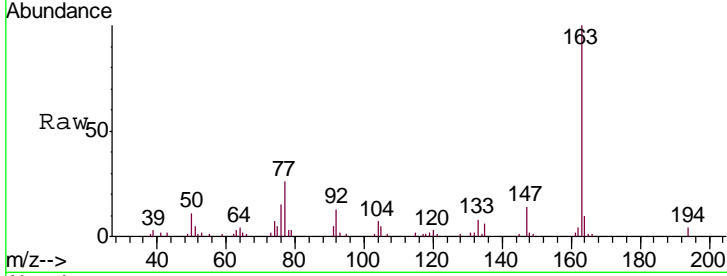




#44
 Dimethylphthalate
 Concen: 4.615 ng/ul
 RT: 13.69 min Scan# 1819
 Delta R.T. 0.00 min
 Lab File: BM022267.D
 Acq: 23 Aug 2019 21:53

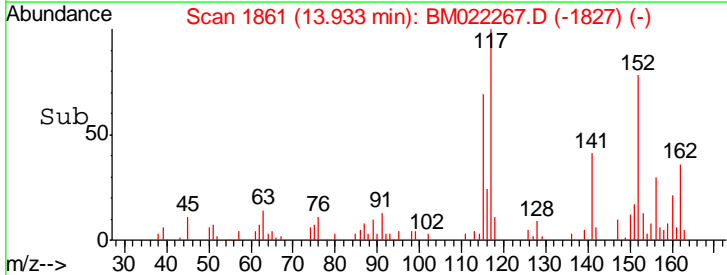
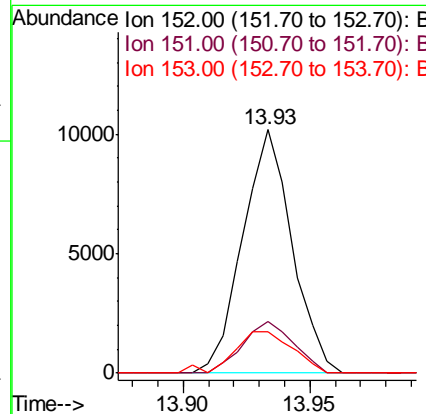
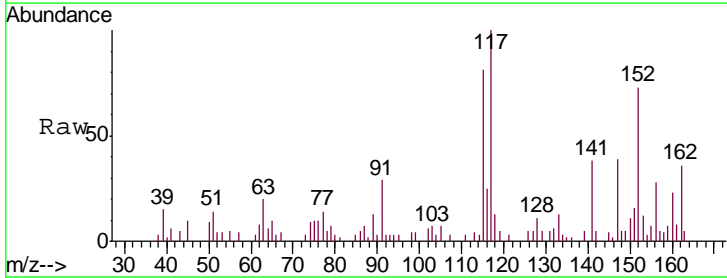
Instrument :
 BNA_M
 ClientSampled :
 C0AB6

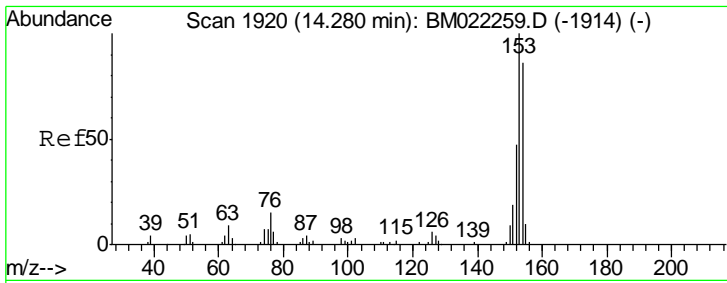
Tgt Ion	Resp	Lower	Upper
163	45023		
194	3.8	3.0	4.6
164	10.3	7.8	11.8



#47
 Acenaphthylene
 Concen: 1.287 ng/ul
 RT: 13.93 min Scan# 1861
 Delta R.T. 0.00 min
 Lab File: BM022267.D
 Acq: 23 Aug 2019 21:53

Tgt Ion	Resp	Lower	Upper
152	13786		
151	21.4	16.0	24.0
153	17.0	10.4	15.6#

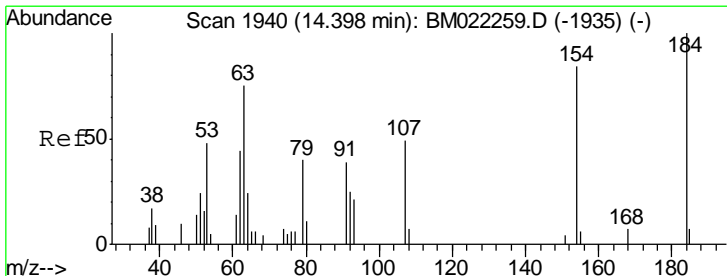
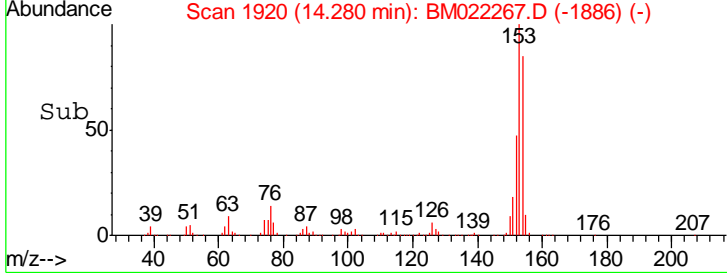
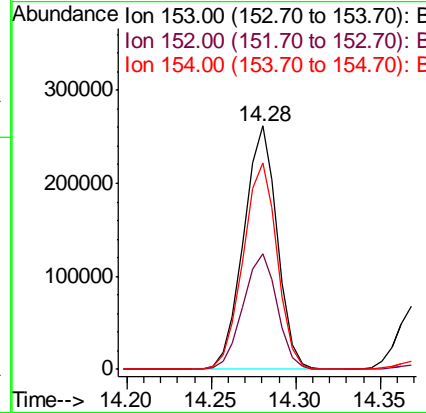
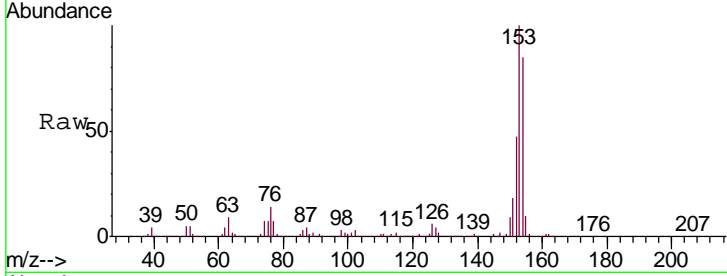




#49
 Acenaphthene
 Concen: 47.583 ng/ul
 RT: 14.28 min Scan# 1920
 Delta R.T. 0.00 min
 Lab File: BM022267.D
 Acq: 23 Aug 2019 21:53

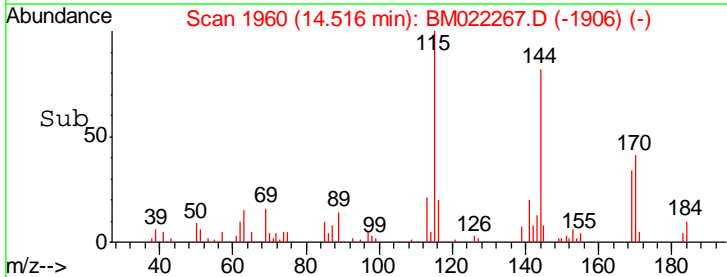
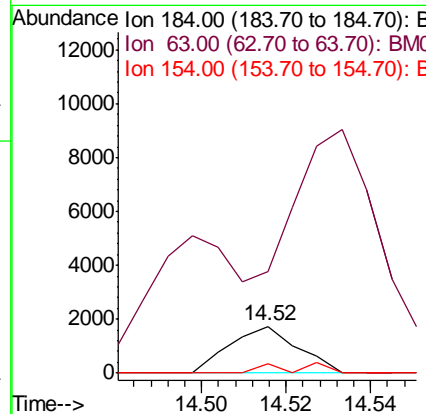
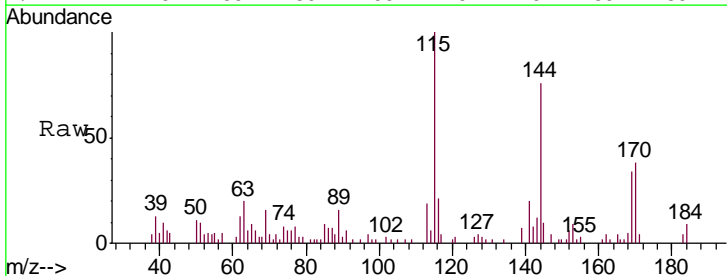
Instrument :
 BNA_M
 ClientSampled :
 C0AB6

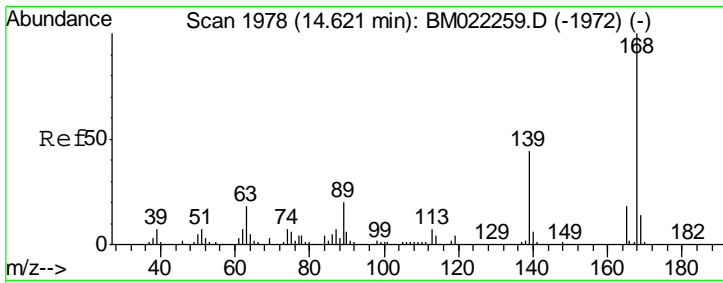
Tgt Ion	Resp	Lower	Upper
153	361753		
152	47.4	38.6	58.0
154	84.8	68.9	103.3



#50
 2,4-Dinitrophenol
 Concen: 1.734 ng/ul
 RT: 14.52 min Scan# 1960
 Delta R.T. 0.12 min
 Lab File: BM022267.D
 Acq: 23 Aug 2019 21:53

Tgt Ion	Resp	Lower	Upper
184	1942		
63	216.8	63.4	95.0#
154	19.9	72.6	108.8#

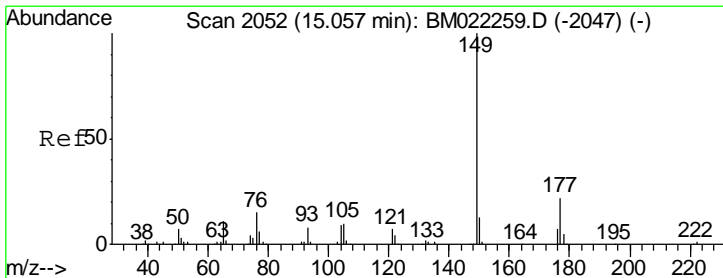
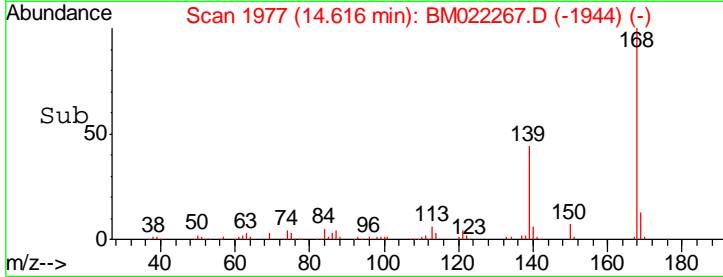
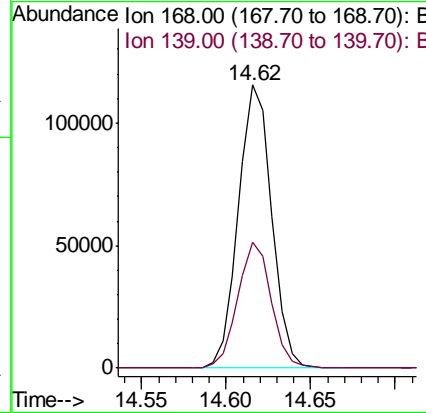
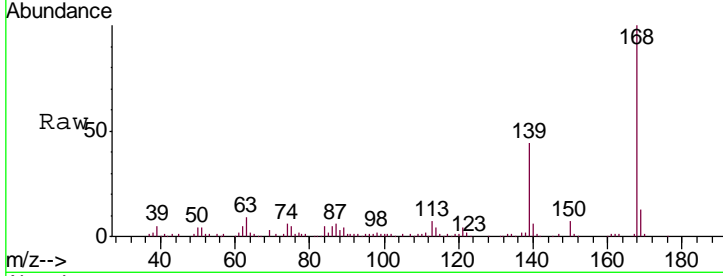




#53
 Dibenzofuran
 Concen: 14.034 ng/ul
 RT: 14.62 min Scan# 1977
 Delta R.T. -0.01 min
 Lab File: BM022267.D
 Acq: 23 Aug 2019 21:53

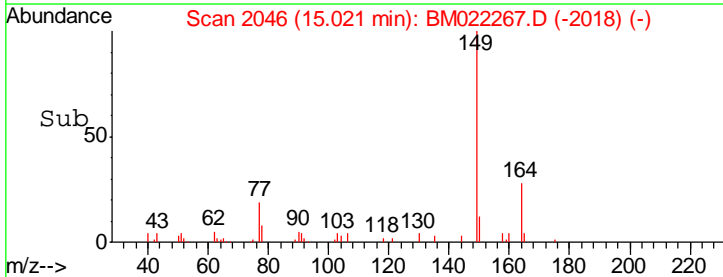
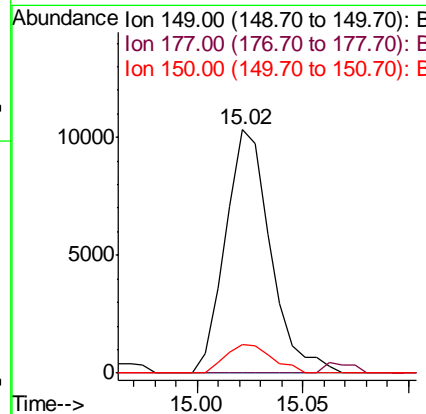
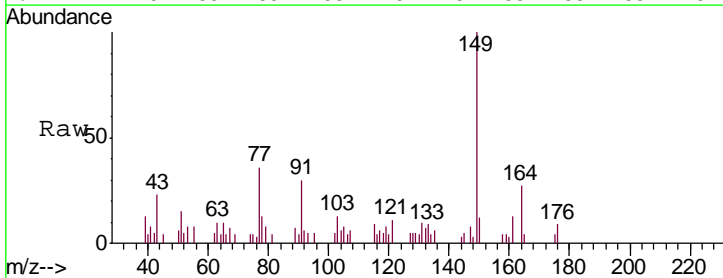
Instrument :
 BNA_M
 ClientSampled :
 C0AB6

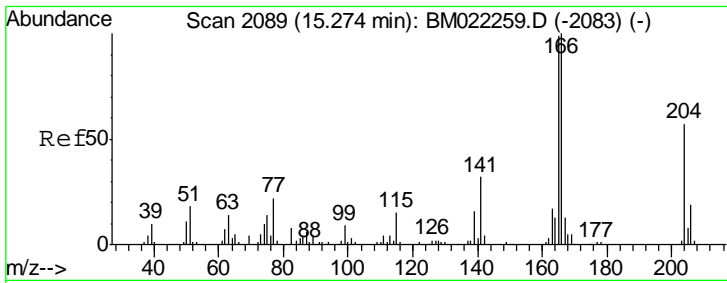
Tgt Ion:168 Resp: 158915
 Ion Ratio Lower Upper
 168 100
 139 44.3 36.2 54.4



#56
 Diethylphthalate
 Concen: 1.458 ng/ul
 RT: 15.02 min Scan# 2046
 Delta R.T. -0.04 min
 Lab File: BM022267.D
 Acq: 23 Aug 2019 21:53

Tgt Ion:149 Resp: 15258
 Ion Ratio Lower Upper
 149 100
 177 0.0 16.7 25.1#
 150 11.6 10.8 16.2

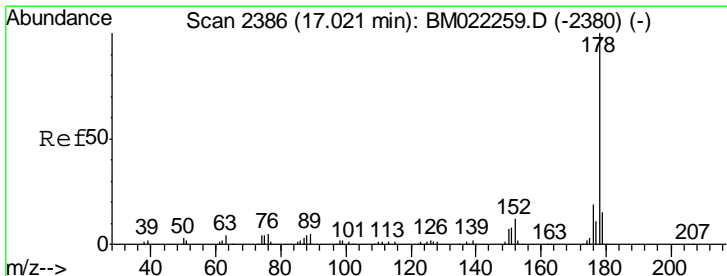
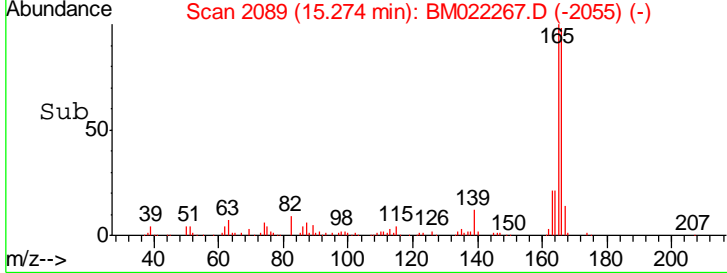
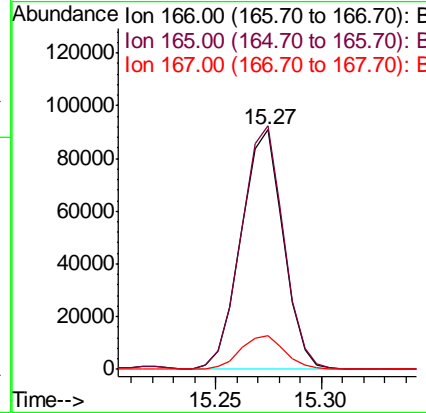
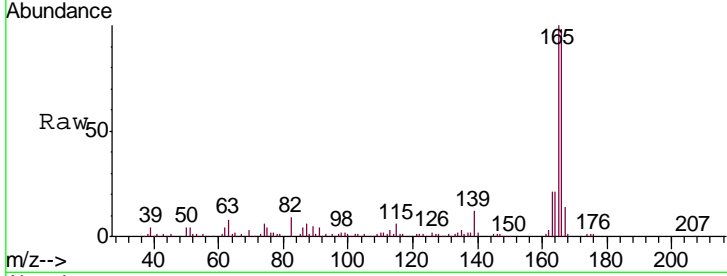




#58
 Fluorene
 Concen: 13.206 ng/ul
 RT: 15.27 min Scan# 2089
 Delta R.T. 0.00 min
 Lab File: BM022267.D
 Acq: 23 Aug 2019 21:53

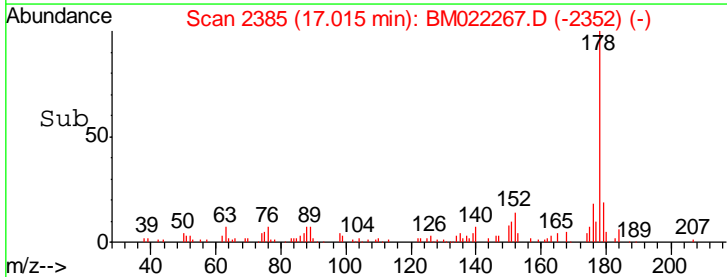
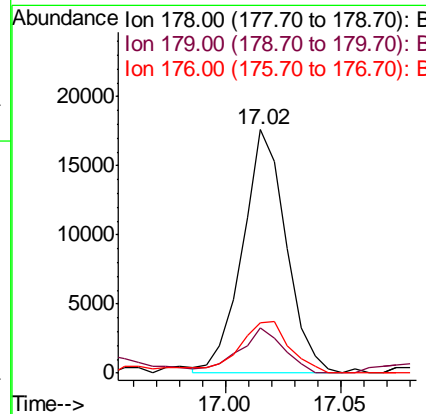
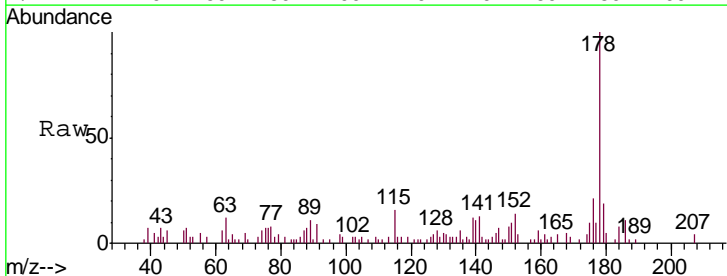
Instrument :
 BNA_M
 ClientSampled :
 C0AB6

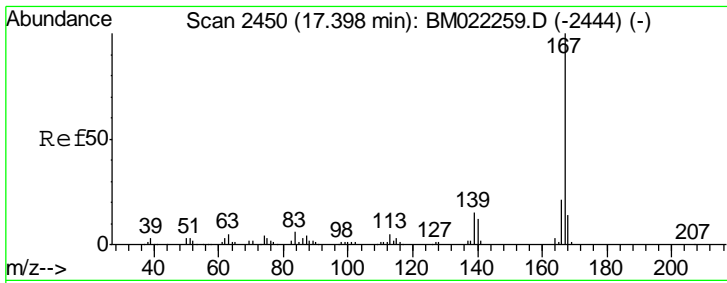
Tgt Ion	Resp	Lower	Upper
166	125952		
165	101.6	80.2	120.2
167	14.3	11.4	17.0



#69
 Phenanthrene
 Concen: 1.467 ng/ul
 RT: 17.02 min Scan# 2385
 Delta R.T. -0.01 min
 Lab File: BM022267.D
 Acq: 23 Aug 2019 21:53

Tgt Ion	Resp	Lower	Upper
178	23269		
179	18.5	12.4	18.6
176	20.9	15.4	23.0





#74
 Carbazole
 Concen: 20.275 ng/ul
 RT: 17.40 min Scan# 2450
 Delta R.T. 0.00 min
 Lab File: BM022267.D
 Acq: 23 Aug 2019 21:53

Instrument :
 BNA_M
 ClientSampled :
 C0AB6

Tgt Ion	Resp	Lower	Upper
167	302318		
166	21.7	17.8	26.8
139	14.9	11.8	17.8

