

Data Path : Z:\SVOASRV\HPCHEM1\BNA M\DATA\BM082319\
 Data File : BM022291.D
 Acq On : 24 Aug 2019 13:22
 Operator : HP/JU
 Sample : K4242-12
 Misc :
 ALS Vial : 44 Sample Multiplier: 1

Instrument :
 BNA_M
 ClientSampleId :
 COAJ0

Quant Time: Aug 25 02:12:22 2019
 Quant Method : Z:\SVOASRV\HPCHEM1\BNA_M\METHODS\SOM-EPA-BM082219MA.M
 Quant Title : SVOA CALIBRATION
 QLast Update : Sun Aug 25 01:20:09 2019
 Response via : Initial Calibration

Internal Standards	R.T.	QIon	Response	Conc	Units	Dev(Min)
1) 1,4-Dichlorobenzene-d4	7.56	152	45820	20.00	ng/ul	0.00
18) Naphthalene-d8	10.33	136	207766	20.00	ng/ul	0.00
35) Acenaphthene-d10	14.21	164	142307	20.00	ng/ul	0.00
61) Phenanthrene-d10	16.97	188	324430	20.00	ng/ul	0.00
77) Chrysene-d12	21.19	240	356551	20.00	ng/ul	0.00
85) Perylene-d12	23.38	264	315313	20.00	ng/ul	0.00

System Monitoring Compounds

3) 1,4-Dioxane-d8	3.13	96	5793	5.66	ng/uL	0.00
5) Phenol-d5	6.75	99	120573	30.49	ng/ul	0.00
7) Bis-(2-Chloroethyl)ether-d	6.92	67	76125	33.09	ng/ul	0.00
9) 2-Chlorophenol-d4	7.09	132	107229	33.58	ng/ul	0.00
13) 4-Methylphenol-d8	8.27	113	108334	31.61	ng/ul	0.00
19) Nitrobenzene-d5	8.73	128	54200	34.99	ng/ul	0.00
22) 2-Nitrophenol-d4	9.43	143	63702	35.33	ng/ul	0.00
26) 2,4-Dichlorophenol-d3	9.97	165	120988	32.96	ng/ul	0.00
29) 4-Chloroaniline-d4	10.50	131	144250	32.31	ng/ul	0.00
43) Dimethylphthalate-d6	13.64	166	396874	31.67	ng/ul	0.00
46) Acenaphthylene-d8	13.90	160	448903	33.26	ng/ul	0.00
51) 4-Nitrophenol-d4	14.47	143	49656	26.75	ng/ul	0.00
57) Fluorene-d10	15.22	176	342142	32.92	ng/ul	0.00
62) 4,6-Dinitro-2-methylphenol	15.38	200	45936	18.35	ng/ul	0.00
70) Anthracene-d10	17.07	188	575263	33.49	ng/ul	0.00
78) Pyrene-d10	19.39	212	740707	39.97	ng/ul	0.00
89) Benzo(a)pyrene-d12	23.24	264	601470	34.72	ng/ul	0.01

Target Compounds

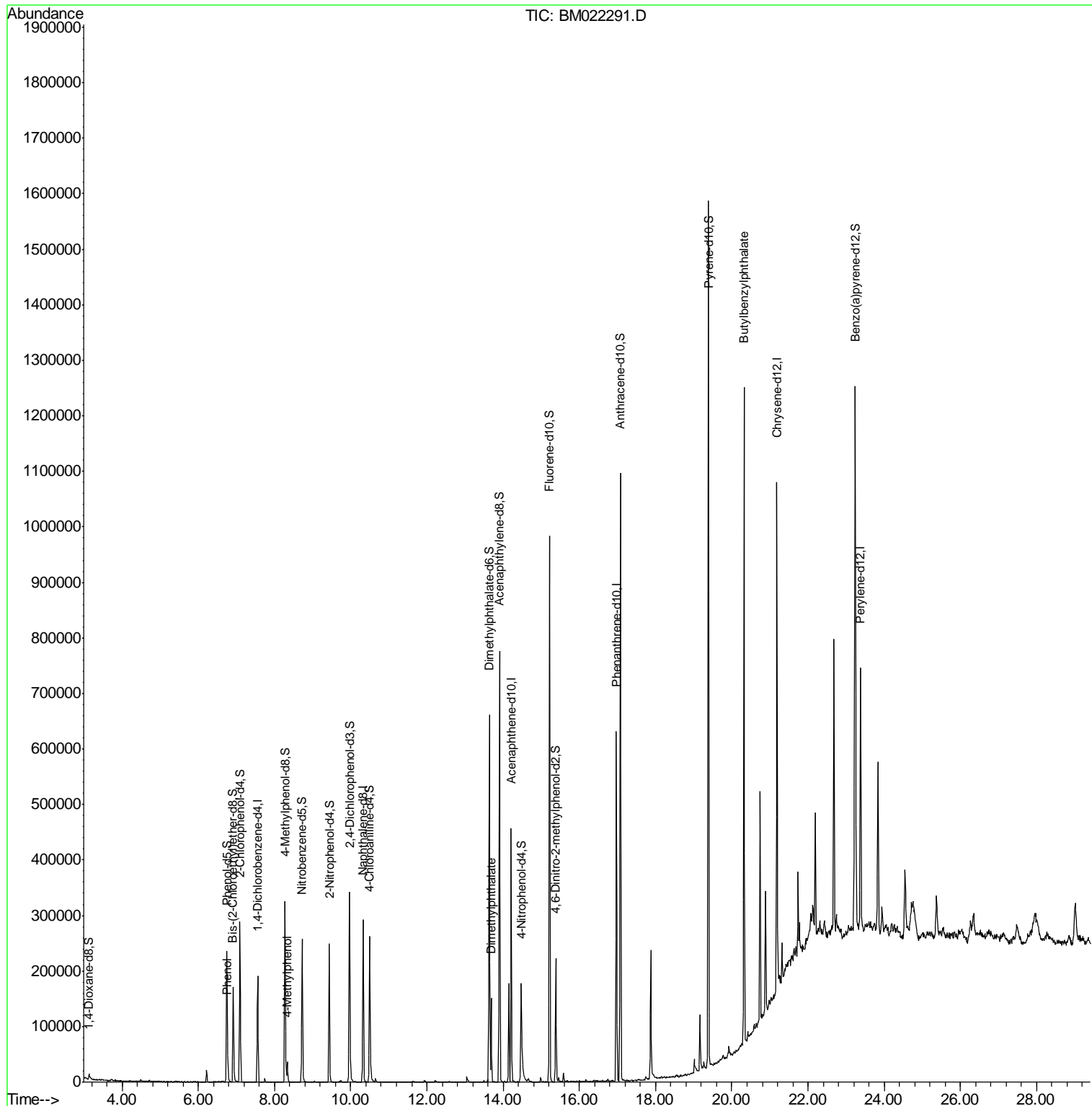
					Ovalue
6) Phenol	6.77	94	7742	1.828	ng/ul# 79
16) 4-Methylphenol	8.33	108	11478	3.131	ng/ul 84
44) Dimethylphthalate	13.69	163	87264	6.843	ng/ul 100
80) Butylbenzylphthalate	20.32	149	291755	29.870	ng/ul 99

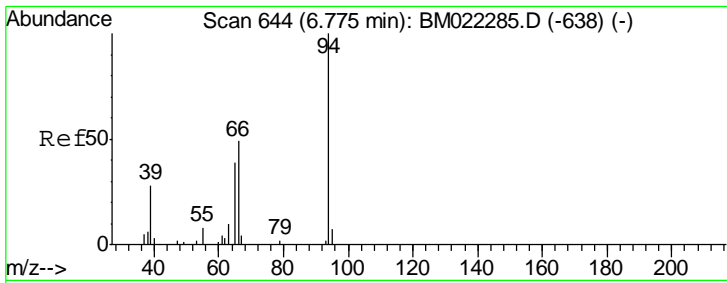
(#) = qualifier out of range (m) = manual integration (+) = signals summed

Data Path : Z:\SVOASRV\HPCHEM1\BNA M\DATA\BM082319\
 Data File : BM022291.D
 Acq On : 24 Aug 2019 13:22
 Operator : HP/JU
 Sample : K4242-12
 Misc :
 ALS Vial : 44 Sample Multiplier: 1

Instrument :
 BNA_M
 ClientSampleId :
 C0AJ0

Quant Time: Aug 25 02:12:22 2019
 Quant Method : Z:\SVOASRV\HPCHEM1\BNA_M\METHODS\SOM-EPA-BM082219MA.M
 Quant Title : SVOA CALIBRATION
 QLast Update : Sun Aug 25 01:20:09 2019
 Response via : Initial Calibration

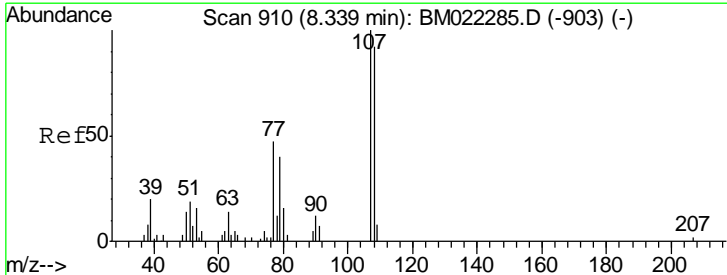
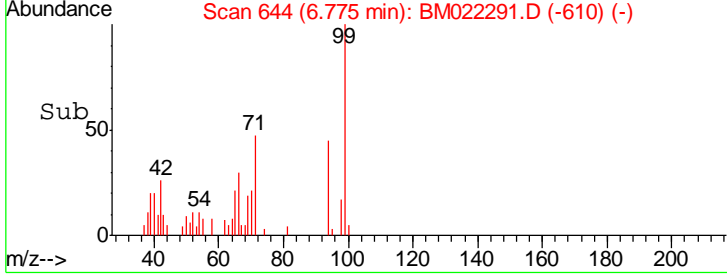
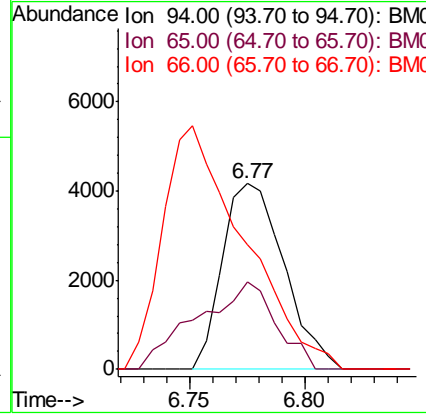
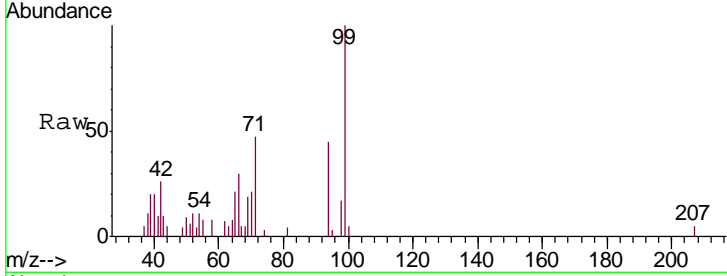




#6
 Phenol
 Concen: 1.828 ng/ul
 RT: 6.77 min Scan# 644
 Delta R.T. -0.00 min
 Lab File: BM022291.D
 Acq: 24 Aug 2019 13:22

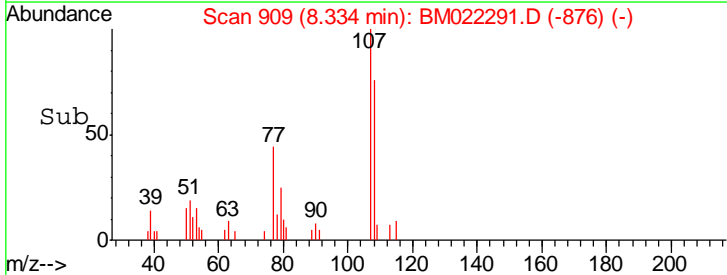
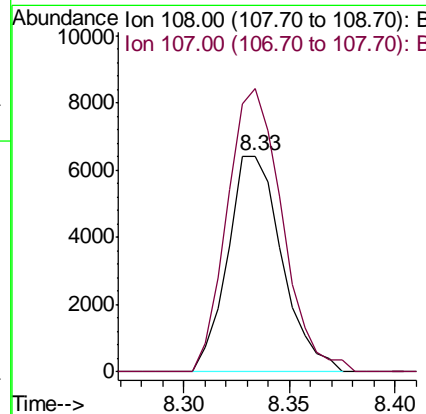
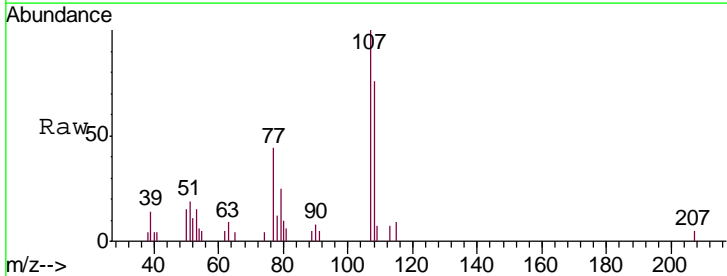
Instrument :
 BNA_M
 ClientSampled :
 COAJ0

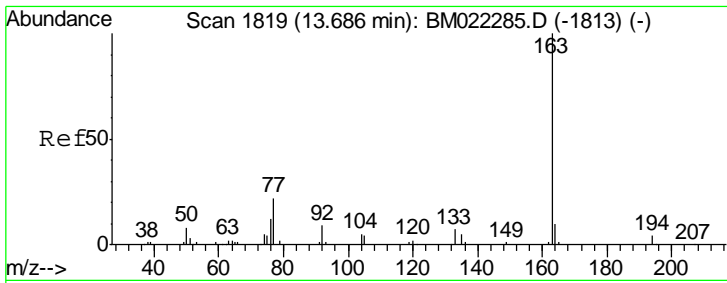
Tgt Ion	Resp	Lower	Upper
94	100		
65	46.8	29.2	43.8#
66	66.9	40.6	60.8#



#16
 4-Methylphenol
 Concen: 3.131 ng/ul
 RT: 8.33 min Scan# 909
 Delta R.T. -0.01 min
 Lab File: BM022291.D
 Acq: 24 Aug 2019 13:22

Tgt Ion	Resp	Lower	Upper
108	100		
107	131.2	90.8	136.2

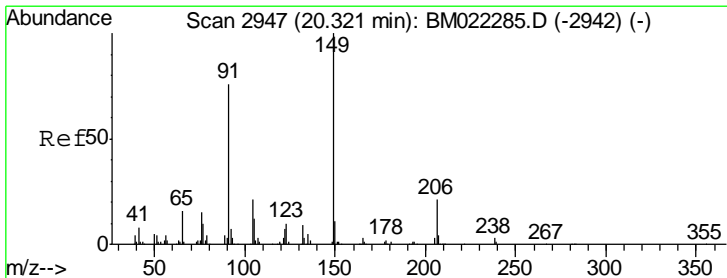
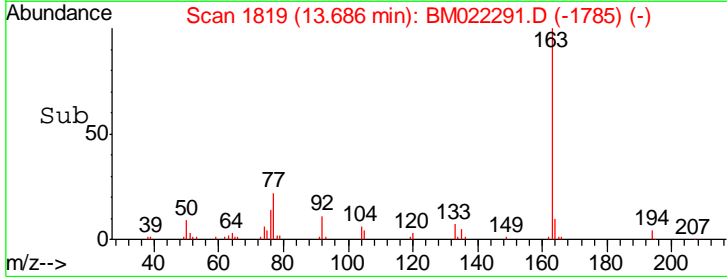
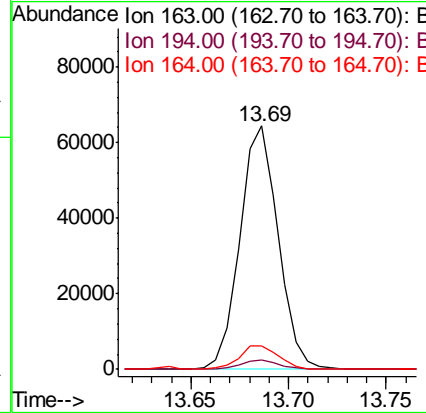
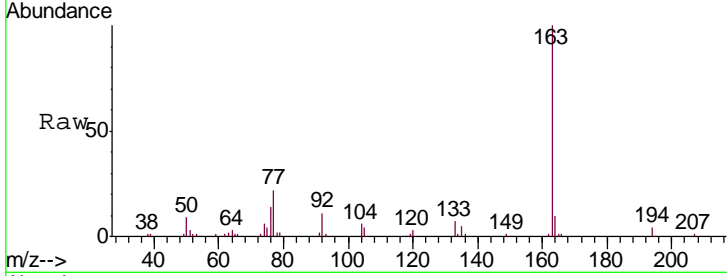




#44
 Dimethylphthalate
 Concen: 6.843 ng/ul
 RT: 13.69 min Scan# 1819
 Delta R.T. -0.00 min
 Lab File: BM022291.D
 Acq: 24 Aug 2019 13:22

Instrument :
 BNA_M
 ClientSampled :
 COAJ0

Tgt Ion	Resp	Lower	Upper
163	100		
194	3.7	3.0	4.6
164	9.6	7.8	11.8



#80
 Butylbenzylphthalate
 Concen: 29.870 ng/ul
 RT: 20.32 min Scan# 2947
 Delta R.T. -0.00 min
 Lab File: BM022291.D
 Acq: 24 Aug 2019 13:22

Tgt Ion	Resp	Lower	Upper
149	100		
91	76.5	61.8	92.8
206	21.5	16.6	25.0

