

Data Path : Z:\svoasrv\HPCHEM1\BNA_M\Data\BM082319\
 Data File : BM022301.D
 Acq On : 24 Aug 2019 19:29
 Operator : HP/JU
 Sample : K4373-12
 Misc :
 ALS Vial : 10 Sample Multiplier: 1

Instrument :
 BNA_M
 ClientSampleId :
 C0AB4

Integration Parameters: LSCINT.P

Integrator: RTE
 Smoothing : OFF
 Sampling : 1
 Start Thrs: 0.2
 Stop Thrs : 0

Filtering: 5
 Min Area: 0.1 % of largest Peak
 Max Peaks: 100
 Peak Location: TOP

If leading or trailing edge < 100 prefer < Baseline drop else tangent >
 Peak separation: 5

Method : Z:\SVOASRV\HPCHEM1\BNA_M\METHODS\SOM-EPA-BM082219MA.M
 Title : SVOA CALIBRATION

Signal : TIC

peak #	R.T. min	first scan	max scan	last scan	PK TY	peak height	corr. area	corr. % max.	% of total
1	3.128	22	24	35	rVB2	7737	13861	0.73%	0.057%
2	6.751	635	640	651	rBV2	34750	68932	3.63%	0.283%
3	6.910	661	667	675	rBV	120868	197069	10.37%	0.809%
4	7.093	692	698	710	rVB	160813	268542	14.13%	1.102%
5	7.551	770	776	785	rVB	155656	245936	12.94%	1.009%
6	8.275	892	899	912	rBV	122518	210575	11.08%	0.864%
7	8.410	918	922	926	rBV3	11007	16420	0.86%	0.067%
8	8.722	968	975	987	rBV	197475	327624	17.23%	1.345%
9	9.298	1070	1073	1080	rVV4	6899	10913	0.57%	0.045%
10	9.434	1086	1096	1106	rVB	182649	342679	18.03%	1.406%
11	9.769	1148	1153	1160	rBV4	12201	21939	1.15%	0.090%
12	9.969	1176	1187	1195	rBV	238199	486092	25.57%	1.995%
13	10.328	1241	1248	1253	rBV	240734	398938	20.99%	1.637%
14	10.369	1253	1255	1263	rVB	31411	48788	2.57%	0.200%
15	10.504	1273	1278	1284	rVB4	20311	38410	2.02%	0.158%
16	10.681	1301	1308	1311	rVV4	7891	15708	0.83%	0.064%
17	10.716	1311	1314	1323	rVB3	16093	25671	1.35%	0.105%
18	10.998	1355	1362	1368	rVB3	8163	12046	0.63%	0.049%
19	11.275	1401	1409	1416	rBV2	17641	29497	1.55%	0.121%
20	11.351	1416	1422	1427	rVB3	6700	12299	0.65%	0.050%
21	11.445	1431	1438	1447	rVB5	13400	28893	1.52%	0.119%
22	11.628	1464	1469	1480	rVB2	45243	101832	5.36%	0.418%
23	11.869	1501	1510	1512	rBV2	107446	201031	10.58%	0.825%
24	11.922	1517	1519	1525	rVB2	27029	35485	1.87%	0.146%
25	12.004	1525	1533	1541	rBV5	26107	64635	3.40%	0.265%
26	12.110	1546	1551	1552	rBV2	19518	27510	1.45%	0.113%
27	12.163	1555	1560	1566	rVV2	231570	396033	20.83%	1.625%
28	12.210	1566	1568	1573	rVB3	22797	27497	1.45%	0.113%
29	12.357	1587	1593	1597	rBV3	219962	409677	21.55%	1.681%
30	12.428	1602	1605	1613	rVB	77414	131143	6.90%	0.538%
31	12.498	1613	1617	1619	rBV2	20553	26581	1.40%	0.109%
32	12.533	1619	1623	1628	rBV6	21307	41049	2.16%	0.168%
33	12.627	1635	1639	1643	rVB4	28238	40634	2.14%	0.167%
34	12.704	1643	1652	1656	rBV3	85754	167732	8.82%	0.688%

Data Path : Z:\svoasrv\HPCHEM1\BNA_M\Data\BM082319\
 Data File : BM022301.D
 Acq On : 24 Aug 2019 19:29
 Operator : HP/JU
 Sample : K4373-12
 Misc :
 ALS Vial : 10 Sample Multiplier: 1

Instrument :
 BNA_M
 ClientSampleId :
 C0AB4

Integration Parameters: LSCINT.P

Integrator: RTE
 Smoothing : OFF
 Sampling : 1
 Start Thrs: 0.2
 Stop Thrs : 0

Filtering: 5
 Min Area: 0.1 % of largest Peak
 Max Peaks: 100
 Peak Location: TOP

If leading or trailing edge < 100 prefer < Baseline drop else tangent >
 Peak separation: 5

Method : Z:\SVOASRV\HPCHEM1\BNA_M\METHODS\SOM-EPA-BM082219MA.M
 Title : SVOA CALIBRATION

35	12.751	1656	1660	1666	rVB5	44397	79023	4.16%	0.324%
36	12.822	1666	1672	1675	rBV3	46032	90153	4.74%	0.370%
37	12.916	1683	1688	1692	rBV6	45580	77458	4.07%	0.318%
38	12.975	1692	1698	1702	rVV4	29426	64408	3.39%	0.264%
39	13.022	1702	1706	1710	rVV3	66955	98663	5.19%	0.405%
40	13.080	1712	1716	1724	rVB3	88032	168288	8.85%	0.691%
41	13.180	1729	1733	1738	rBV5	21318	43274	2.28%	0.178%
42	13.251	1738	1745	1755	rVB	526304	859825	45.23%	3.529%
43	13.386	1760	1768	1773	rBV	159786	251549	13.23%	1.032%
44	13.498	1783	1787	1791	rBV6	9386	17597	0.93%	0.072%
45	13.557	1791	1797	1803	rVV3	111896	204262	10.74%	0.838%
46	13.633	1803	1810	1815	rVV	577131	822608	43.27%	3.376%
47	13.680	1815	1818	1822	rVB2	51496	67972	3.58%	0.279%
48	13.763	1827	1832	1836	rBV6	24509	50552	2.66%	0.207%
49	13.822	1838	1842	1847	rVV6	31226	58925	3.10%	0.242%
50	13.904	1847	1856	1859	rVV	616233	940824	49.49%	3.861%
51	13.939	1859	1862	1867	rVV	351337	462095	24.31%	1.896%
52	13.980	1867	1869	1870	rVV	11986	10216	0.54%	0.042%
53	14.016	1870	1875	1888	rVB5	147324	309351	16.27%	1.270%
54	14.145	1888	1897	1902	rBV5	65596	153533	8.08%	0.630%
55	14.210	1902	1908	1913	rBV	388874	552314	29.05%	2.267%
56	14.274	1913	1919	1925	rVB	997020	1401961	73.75%	5.754%
57	14.327	1925	1928	1932	rVB3	28878	34893	1.84%	0.143%
58	14.416	1938	1943	1949	rVB3	87530	148301	7.80%	0.609%
59	14.504	1949	1958	1963	rBV4	53886	152822	8.04%	0.627%
60	14.551	1963	1966	1971	rVB3	31161	43989	2.31%	0.181%
61	14.616	1974	1977	1978	rBV2	13705	15020	0.79%	0.062%
62	14.721	1991	1995	1997	rBV4	33056	49745	2.62%	0.204%
63	14.769	1998	2003	2008	rVB	99951	139527	7.34%	0.573%
64	14.845	2012	2016	2018	rBV3	24326	35731	1.88%	0.147%
65	14.980	2034	2039	2046	rVB9	41768	78078	4.11%	0.320%
66	15.069	2050	2054	2055	rBV4	17733	24675	1.30%	0.101%
67	15.104	2055	2060	2066	rVB5	56536	122284	6.43%	0.502%
68	15.216	2072	2079	2084	rBV	860568	1260799	66.32%	5.174%
69	15.268	2084	2088	2092	rVV	72994	96550	5.08%	0.396%
70	15.310	2092	2095	2097	rVV4	19230	28283	1.49%	0.116%
71	15.333	2097	2099	2102	rVV2	36630	50439	2.65%	0.207%

Data Path : Z:\svoasrv\HPCHEM1\BNA_M\Data\BM082319\
 Data File : BM022301.D
 Acq On : 24 Aug 2019 19:29
 Operator : HP/JU
 Sample : K4373-12
 Misc :
 ALS Vial : 10 Sample Multiplier: 1

Instrument :
 BNA_M
 ClientSampleId :
 C0AB4

Integration Parameters: LSCINT.P

Integrator: RTE
 Smoothing : OFF
 Sampling : 1
 Start Thrs: 0.2
 Stop Thrs : 0

Filtering: 5
 Min Area: 0.1 % of largest Peak
 Max Peaks: 100
 Peak Location: TOP

If leading or trailing edge < 100 prefer < Baseline drop else tangent >
 Peak separation: 5

Method : Z:\SVOASRV\HPCHEM1\BNA_M\METHODS\SOM-EPA-BM082219MA.M
 Title : SVOA CALIBRATION

72	15.380	2102	2107	2110	rVV	236797	364964	19.20%	1.498%
73	15.416	2110	2113	2121	rVB	156699	243277	12.80%	0.998%
74	15.486	2121	2125	2132	rBV	121867	212793	11.19%	0.873%
75	15.651	2149	2153	2155	rBV4	16504	25390	1.34%	0.104%
76	15.933	2196	2201	2203	rBV	97311	158513	8.34%	0.651%
77	15.963	2203	2206	2212	rVV	126576	213095	11.21%	0.875%
78	16.039	2215	2219	2228	rVV2	88437	192267	10.11%	0.789%
79	16.151	2234	2238	2246	rBV	60616	105805	5.57%	0.434%
80	16.221	2246	2250	2253	rBV6	27790	48063	2.53%	0.197%
81	16.515	2297	2300	2302	rBV4	19196	27834	1.46%	0.114%
82	16.974	2373	2378	2383	rVB	550732	704690	37.07%	2.892%
83	17.074	2390	2395	2399	rBV	970037	1320419	69.46%	5.419%
84	17.880	2528	2532	2543	rVB2	283404	457948	24.09%	1.879%
85	18.051	2558	2561	2568	rVB4	52469	97849	5.15%	0.402%
86	18.145	2575	2577	2581	rBV3	22173	32957	1.73%	0.135%
87	18.733	2673	2677	2683	rBV	271300	346180	18.21%	1.421%
88	19.045	2727	2730	2736	rVB2	131250	193573	10.18%	0.794%
89	19.162	2746	2750	2757	rBV	226230	303721	15.98%	1.246%
90	19.380	2782	2787	2796	rBV	1380603	1900998	100.00%	7.802%
91	19.909	2871	2877	2884	rVB3	73952	160601	8.45%	0.659%
92	20.409	2960	2962	2968	rVB2	34552	41523	2.18%	0.170%
93	20.886	3039	3043	3051	rVB2	157047	246425	12.96%	1.011%
94	21.186	3088	3094	3099	rBV	714005	943644	49.64%	3.873%
95	21.315	3113	3116	3121	rBV	63349	75739	3.98%	0.311%
96	21.739	3185	3188	3192	rVB	69617	70736	3.72%	0.290%
97	22.192	3261	3265	3268	rBV2	77134	99112	5.21%	0.407%
98	22.674	3345	3347	3351	rVB2	68516	77296	4.07%	0.317%
99	23.239	3436	3443	3452	rVB	785098	1442989	75.91%	5.922%
100	23.374	3461	3466	3475	rVB	394521	700787	36.86%	2.876%

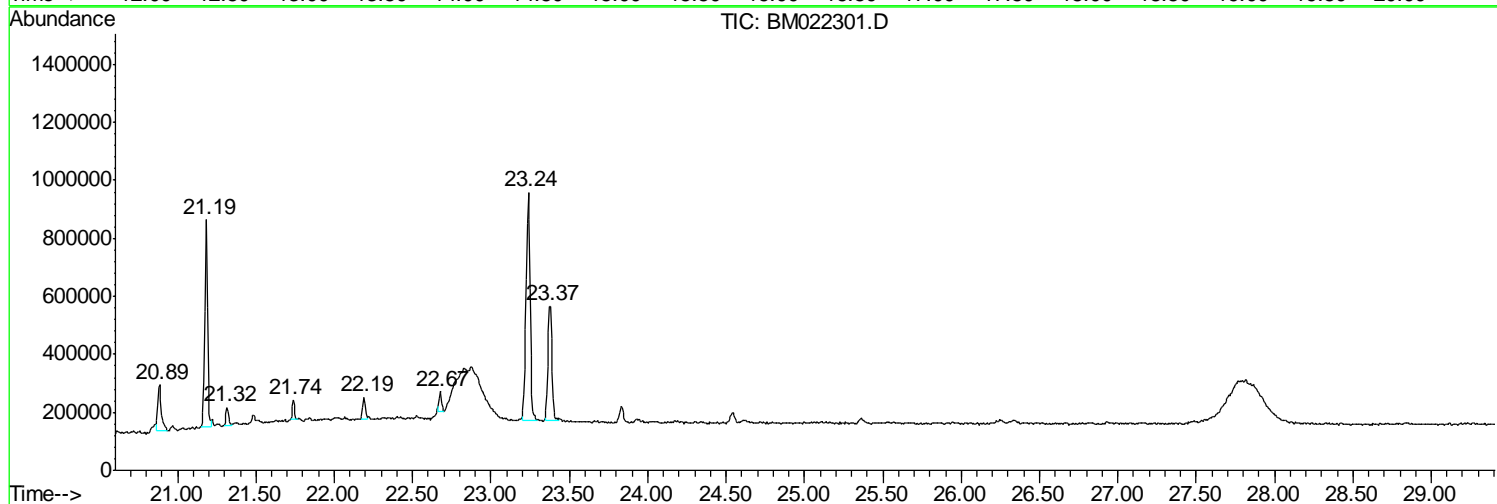
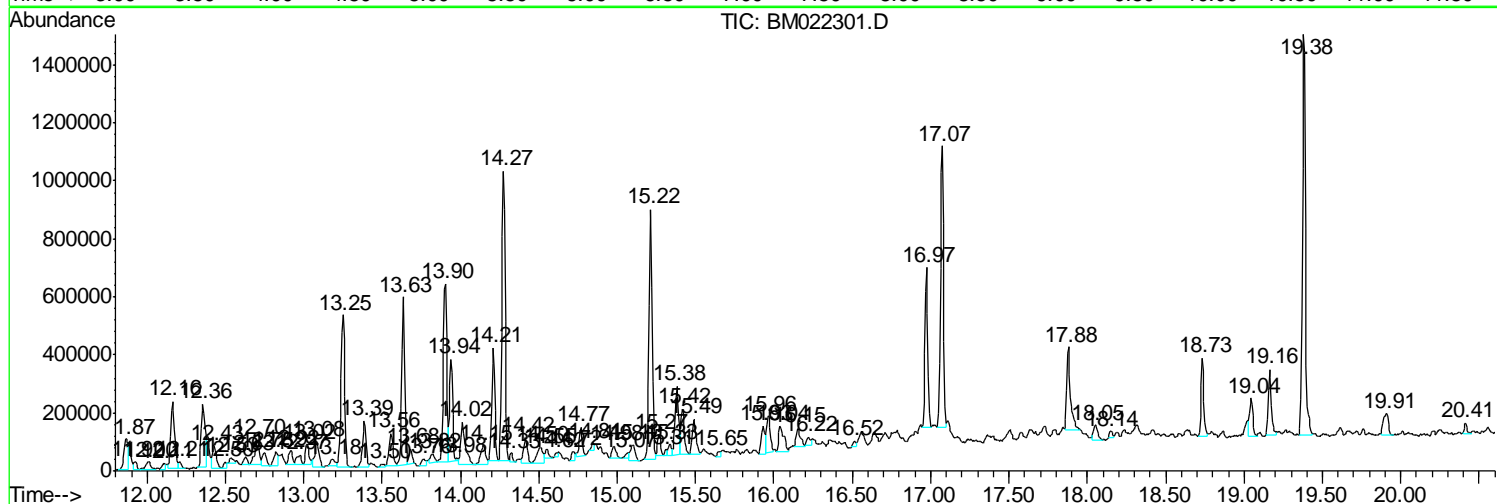
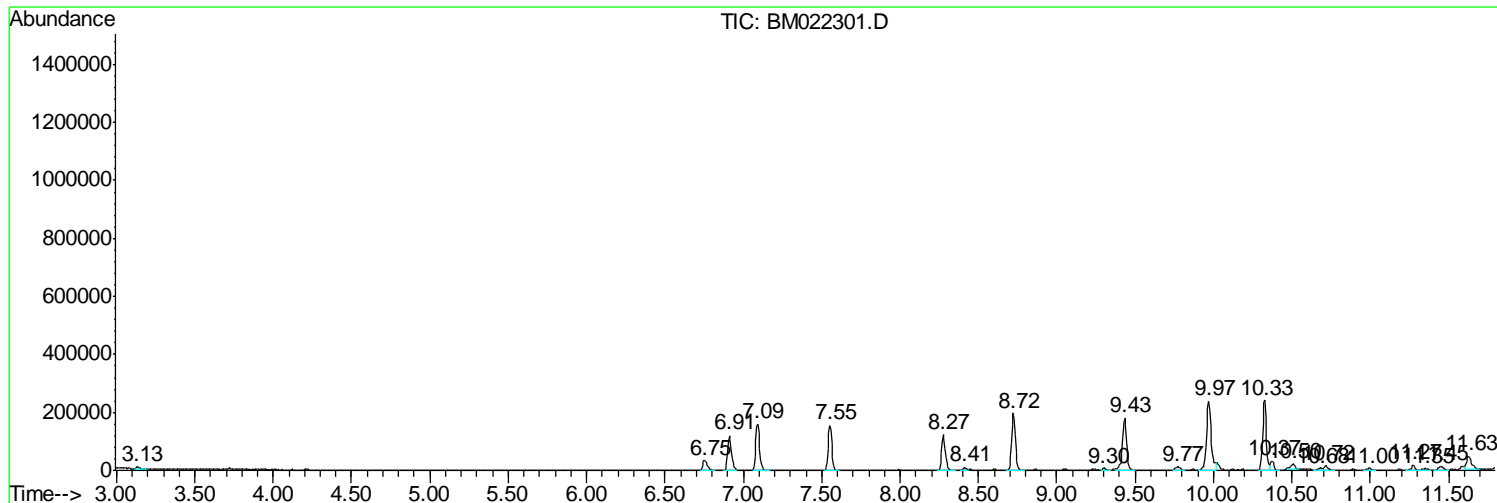
Sum of corrected areas: 24366846

Data Path : Z:\svoasrv\HPCHEM1\BNA_M\Data\BM082319\
 Data File : BM022301.D
 Acq On : 24 Aug 2019 19:29
 Operator : HP/JU
 Sample : K4373-12
 Misc :
 ALS Vial : 10 Sample Multiplier: 1

Instrument :
 BNA_M
ClientSampled :
 C0AB4

Quant Method : Z:\SVOASRV\HPCHEM1\BNA_M\METHODS\SOM-EPA-BM082219MA.M
 Quant Title : SVOA CALIBRATION

TIC Library : C:\DATABASE\NIST02.L
 TIC Integration Parameters: LSCINT.P



Data Path : Z:\svoasrv\HPCHEM1\BNA_M\Data\BM082319\
 Data File : BM022301.D
 Acq On : 24 Aug 2019 19:29
 Operator : HP/JU
 Sample : K4373-12
 Misc :
 ALS Vial : 10 Sample Multiplier: 1

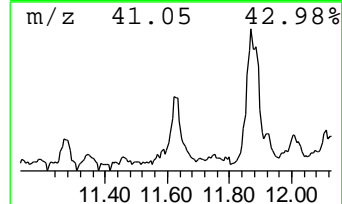
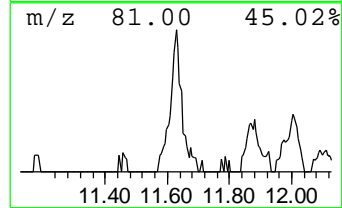
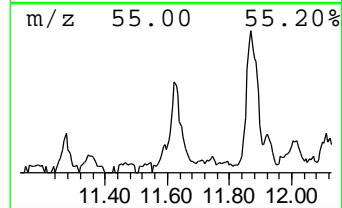
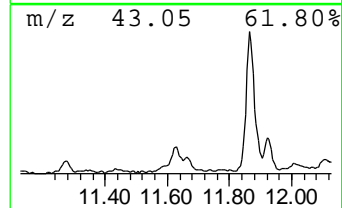
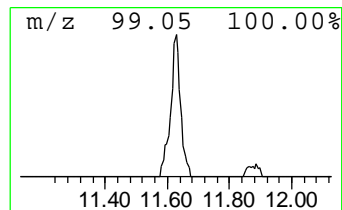
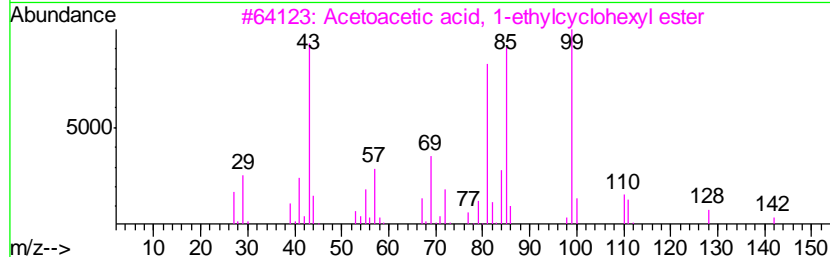
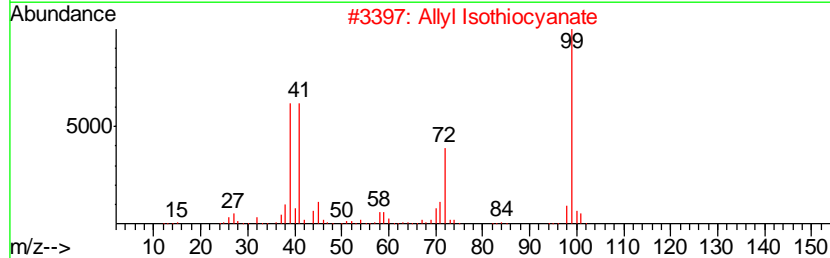
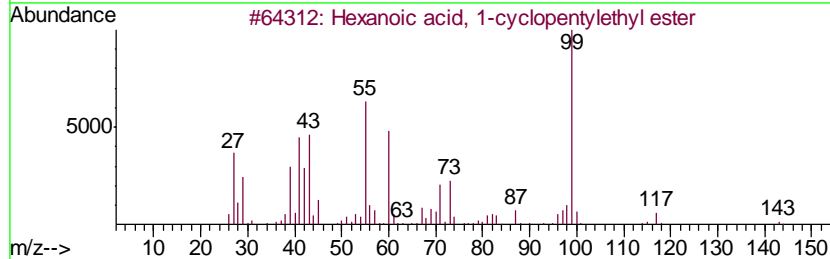
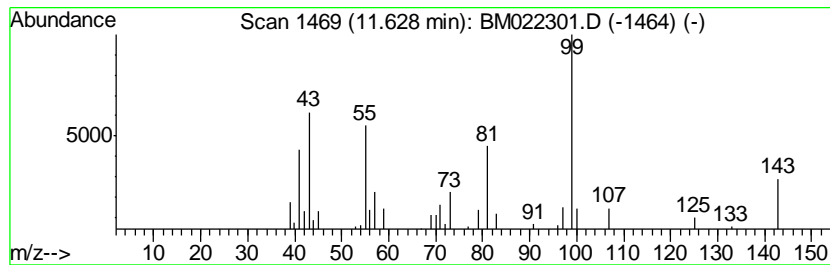
Instrument :
 BNA_M
 ClientSampled :
 C0AB4

Quant Method : Z:\SVOASRV\HPCHEM1\BNA_M\METHODS\SOM-EPA-BM082219MA.M
 Quant Title : SVOA CALIBRATION

TIC Library : C:\DATABASE\NIST02.L
 TIC Integration Parameters: LSCINT.P

 Peak Number 1 Hexanoic acid, 1-cyclopenty... Concentration Rank 19

R.T.	EstConc	Area	Relative to ISTD	R.T.		
11.63	5.11 ng/ul	101832	Naphthalene-d8	10.33		
Hit# of	5	Tentative ID	MW	MolForm	CAS#	Qual
1	Hexanoic acid, 1-cyclopentylethy...	212	C13H24O2	1000279-28-7	53	
2	Allyl Isothiocyanate	99	C4H5NS	000057-06-7	43	
3	Acetoacetic acid, 1-ethylcyclohe...	212	C12H20O3	015780-56-0	38	
4	2-Piperidinone	99	C5H9NO	000675-20-7	38	
5	Isothiazole, 3-methyl-	99	C4H5NS	000693-92-5	38	



Data Path : Z:\svoasrv\HPCHEM1\BNA_M\Data\BM082319\
 Data File : BM022301.D
 Acq On : 24 Aug 2019 19:29
 Operator : HP/JU
 Sample : K4373-12
 Misc :
 ALS Vial : 10 Sample Multiplier: 1

Instrument :
 BNA_M
 ClientSampled :
 C0AB4

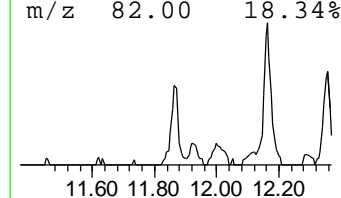
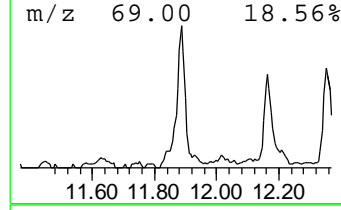
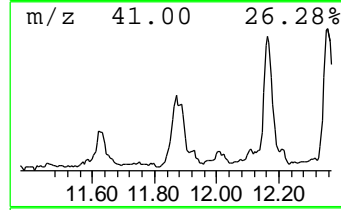
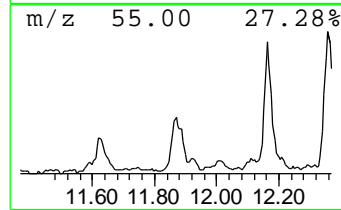
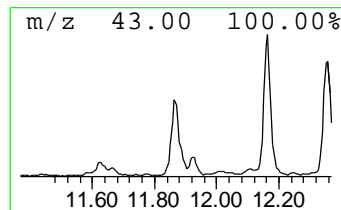
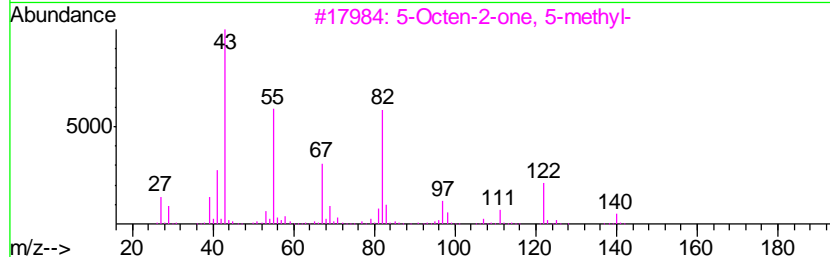
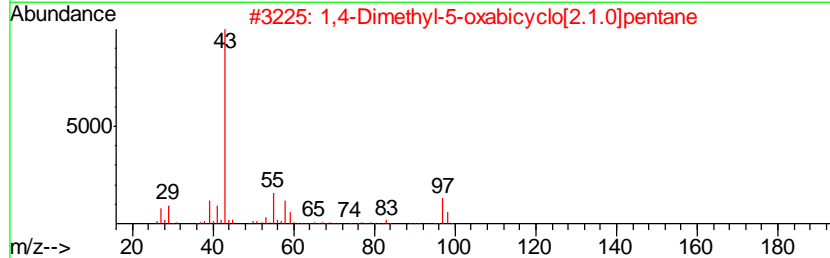
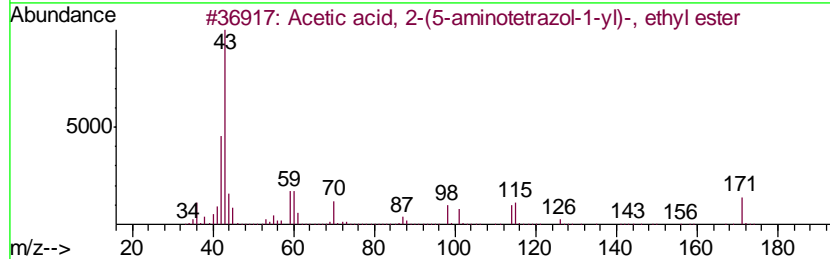
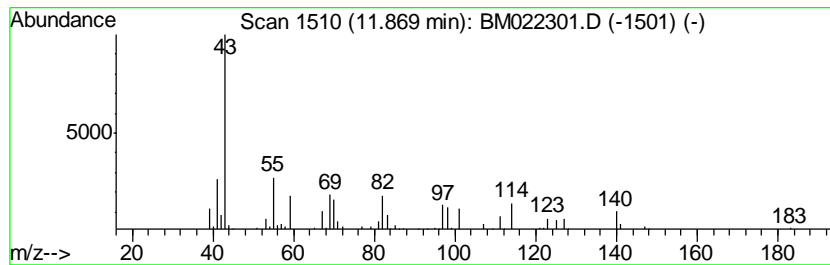
Quant Method : Z:\SVOASRV\HPCHEM1\BNA_M\METHODS\SOM-EPA-BM082219MA.M
 Quant Title : SVOA CALIBRATION

TIC Library : C:\DATABASE\NIST02.L
 TIC Integration Parameters: LSCINT.P

 Peak Number 2 unknown-01 Concentration Rank 6

R.T.	EstConc	Area	Relative to ISTD	R.T.
11.87	10.08 ng/ul	201031	Naphthalene-d8	10.33

Hit#	of	Tentative ID	MW	MolForm	CAS#	Qual
1	5	Acetic acid, 2-(5-aminotetrazol-...	171	C5H9N5O2	021744-57-0	32
2		1,4-Dimethyl-5-oxabicyclo[2.1.0]...	98	C6H10O	002316-03-2	14
3		5-Octen-2-one, 5-methyl-	140	C9H16O	121986-29-6	12
4		Nona-3,5-dien-2-ol	140	C9H16O	1000193-00-8	12
5		2,4-Pentanedione, 3-(2-propenyl)-	140	C8H12O2	003508-78-9	10



Data Path : Z:\svoasrv\HPCHEM1\BNA_M\Data\BM082319\
 Data File : BM022301.D
 Acq On : 24 Aug 2019 19:29
 Operator : HP/JU
 Sample : K4373-12
 Misc :
 ALS Vial : 10 Sample Multiplier: 1

Instrument :
 BNA_M
 ClientSampled :
 C0AB4

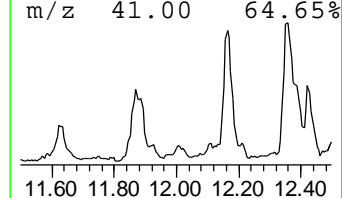
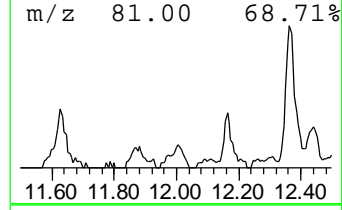
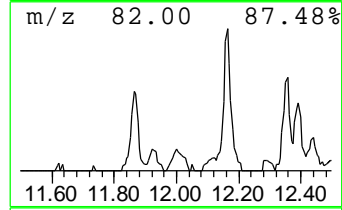
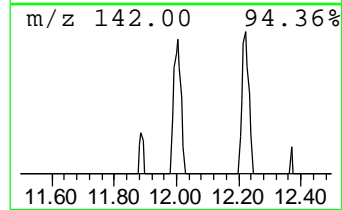
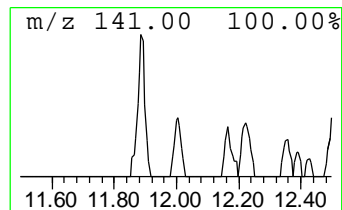
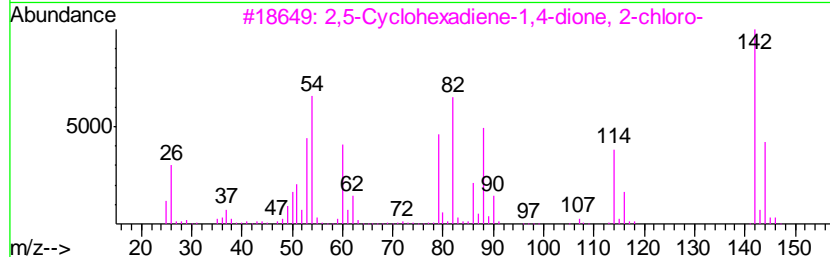
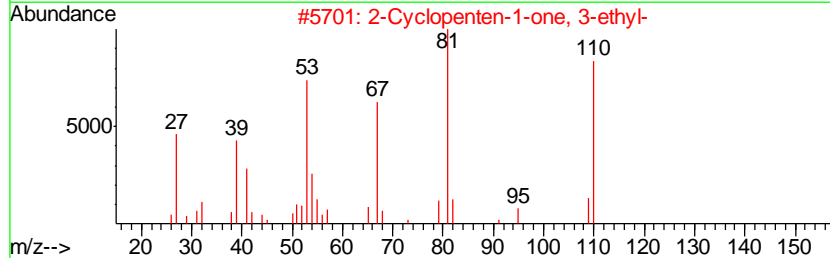
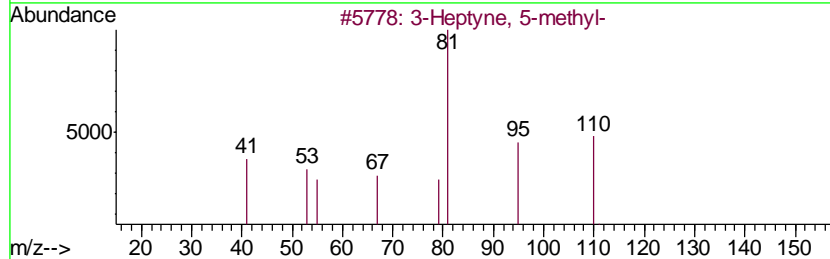
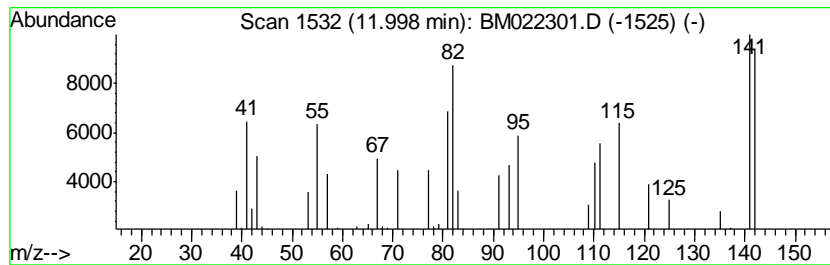
Quant Method : Z:\SVOASRV\HPCHEM1\BNA_M\METHODS\SOM-EPA-BM082219MA.M
 Quant Title : SVOA CALIBRATION

TIC Library : C:\DATABASE\NIST02.L
 TIC Integration Parameters: LSCINT.P

 Peak Number 3 unknown-02 Concentration Rank 27

R.T.	EstConc	Area	Relative to ISTD	R.T.
12.00	3.24 ng/ul	64635	Naphthalene-d8	10.33

Hit#	of	Tentative ID	MW	MolForm	CAS#	Qual
1	5	3-Heptyne, 5-methyl-	110	C8H14	061228-09-9	38
2		2-Cyclopenten-1-one, 3-ethyl-	110	C7H10O	005682-69-9	38
3		2,5-Cyclohexadiene-1,4-dione, 2-...	142	C6H3ClO2	000695-99-8	35
4		4-Cyclopentene-1,3-diol, trans-	100	C5H8O2	000694-47-3	35
5		2-Penten-4-yn-1-ol, 3-methyl-, (E)-	96	C6H8O	006153-06-6	27



Data Path : Z:\svoasrv\HPCHEM1\BNA_M\Data\BM082319\
 Data File : BM022301.D
 Acq On : 24 Aug 2019 19:29
 Operator : HP/JU
 Sample : K4373-12
 Misc :
 ALS Vial : 10 Sample Multiplier: 1

Instrument :
 BNA_M
 ClientSampleID :
 C0AB4

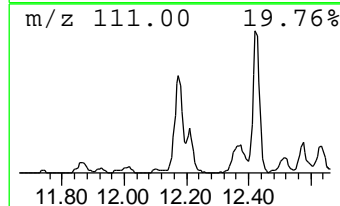
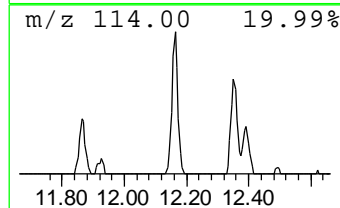
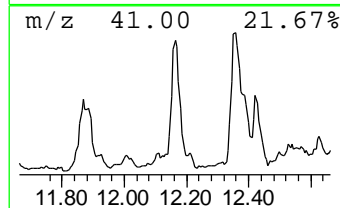
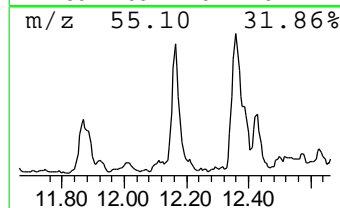
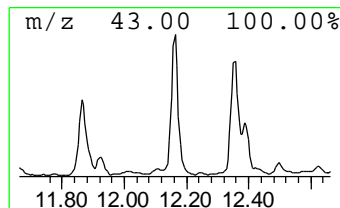
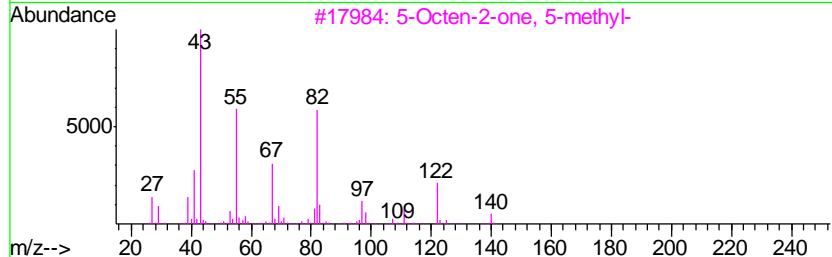
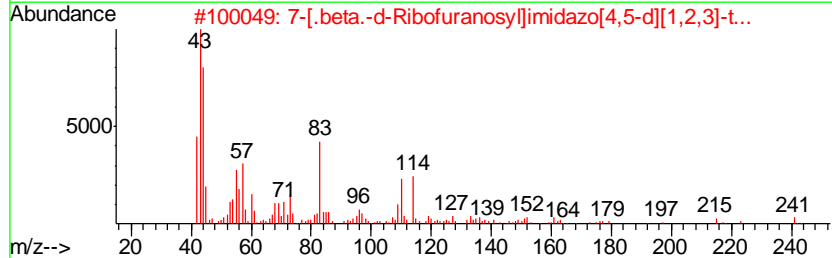
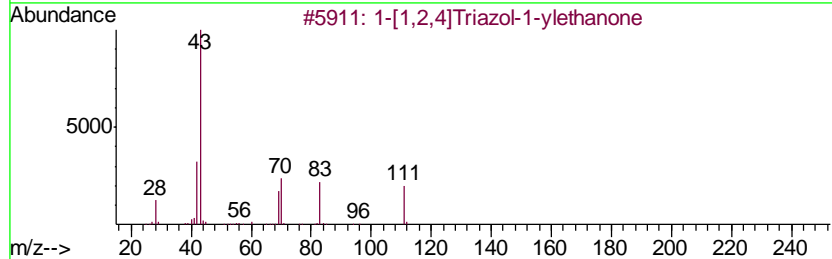
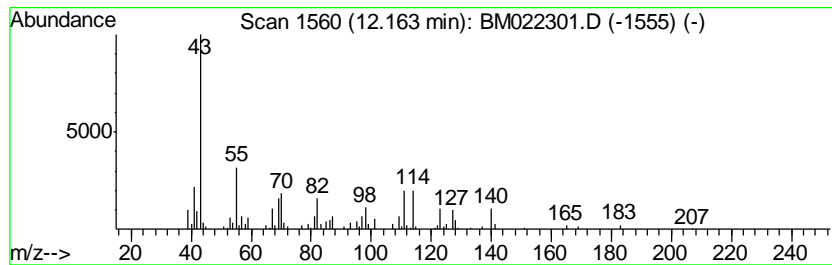
Quant Method : Z:\SVOASRV\HPCHEM1\BNA_M\METHODS\SOM-EPA-BM082219MA.M
 Quant Title : SVOA CALIBRATION

TIC Library : C:\DATABASE\NIST02.L
 TIC Integration Parameters: LSCINT.P

 Peak Number 4 unknown-03 Concentration Rank 2

R.T.	EstConc	Area	Relative to ISTD	R.T.
12.16	19.85 ng/ul	396033	Naphthalene-d8	10.33

Hit#	of	Tentative ID	MW	MolForm	CAS#	Qual
1	5	1-[1,2,4]Triazol-1-ylethanone	111	C4H5N3O	015625-88-4	10
2		7-[.beta.-d-Ribofuranosyl]imidaz...	269	C9H11N5O5	1000211-82-6	10
3		5-Octen-2-one, 5-methyl-	140	C9H16O	121986-29-6	9
4		2-Cyclopenten-1-one, 3-(acetyloxy)-	140	C7H8O3	018766-96-6	9
5		2-Cyclopenten-1-one, 3-(acetyloxy)-	140	C7H8O3	018766-96-6	9



Data Path : Z:\svoasrv\HPCHEM1\BNA_M\Data\BM082319\
 Data File : BM022301.D
 Acq On : 24 Aug 2019 19:29
 Operator : HP/JU
 Sample : K4373-12
 Misc :
 ALS Vial : 10 Sample Multiplier: 1

Instrument :
 BNA_M
 ClientSampleId :
 C0AB4

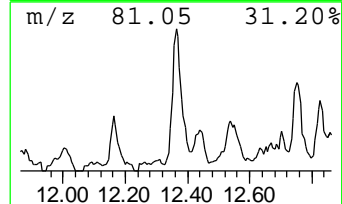
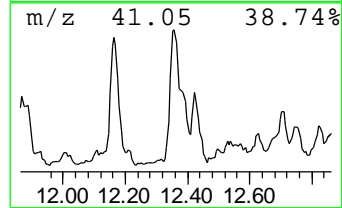
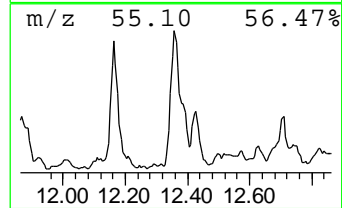
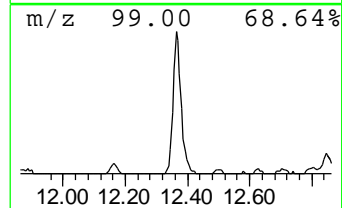
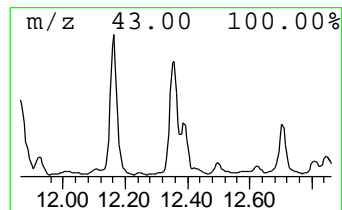
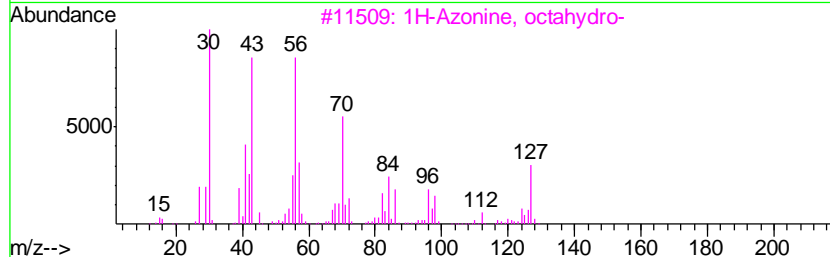
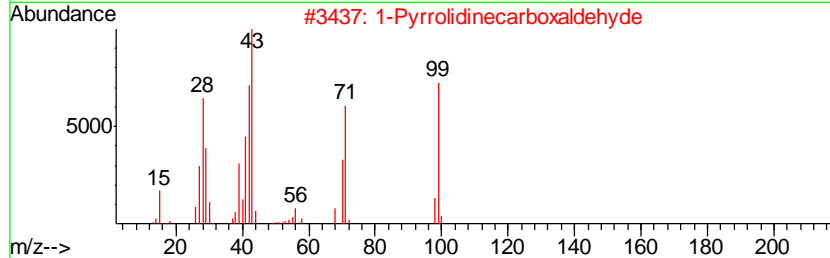
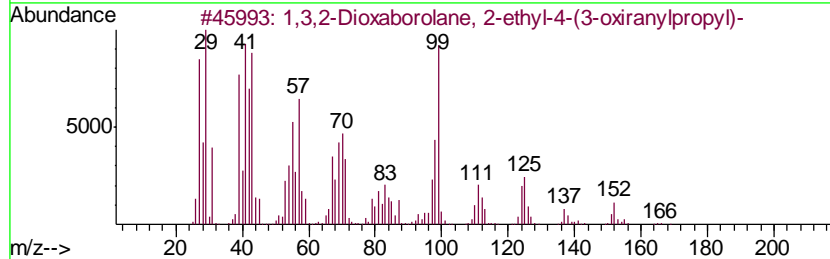
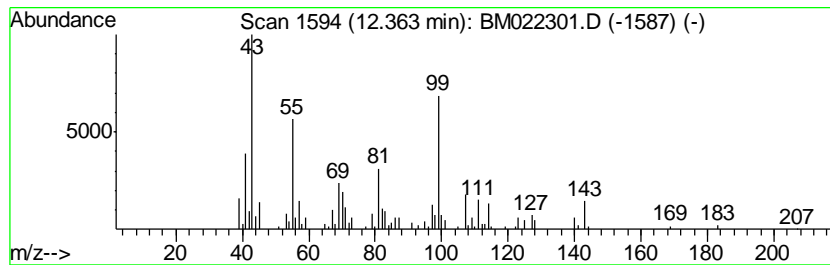
Quant Method : Z:\SVOASRV\HPCHEM1\BNA_M\METHODS\SOM-EPA-BM082219MA.M
 Quant Title : SVOA CALIBRATION

TIC Library : C:\DATABASE\NIST02.L
 TIC Integration Parameters: LSCINT.P

 Peak Number 5 unknown-04 Concentration Rank 3

R.T.	EstConc	Area	Relative to ISTD	R.T.
12.36	14.83 ng/ul	409677	Acenaphthene-d10	14.21

Hit#	of	Tentative ID	MW	MolForm	CAS#	Qual
1	5	1,3,2-Dioxaborolane, 2-ethyl-4-(...	184	C9H17BO3	074810-66-5	37
2		1-Pyrrolidinecarboxaldehyde	99	C5H9NO	003760-54-1	22
3		1H-Azonia, octahydro-	127	C8H17N	005661-71-2	14
4		Trifluoroacetic acid,n-tridecyl ...	296	C15H27F3O2	053800-02-5	14
5		.beta.-Acetylacrylic acid	114	C5H6O3	004743-82-2	14



Data Path : Z:\svoasrv\HPCHEM1\BNA_M\Data\BM082319\
 Data File : BM022301.D
 Acq On : 24 Aug 2019 19:29
 Operator : HP/JU
 Sample : K4373-12
 Misc :
 ALS Vial : 10 Sample Multiplier: 1

Instrument :
 BNA_M
 ClientSampleID :
 C0AB4

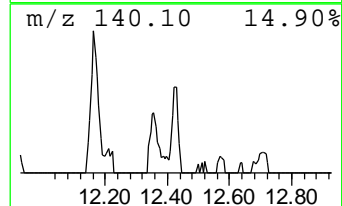
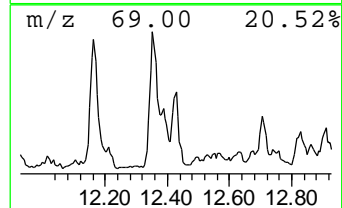
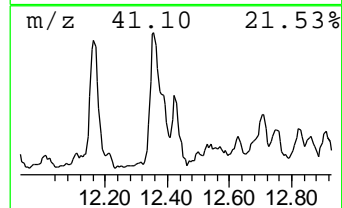
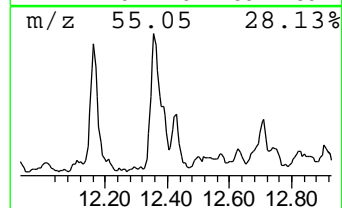
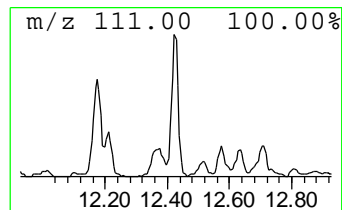
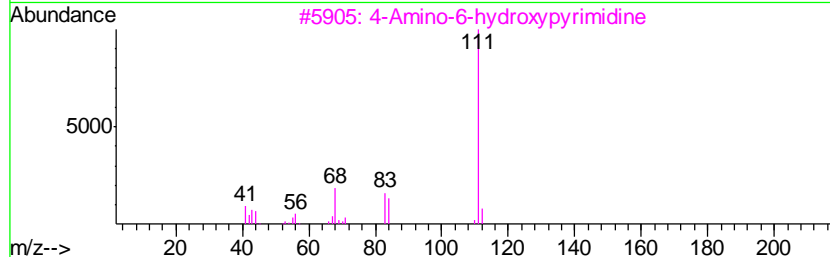
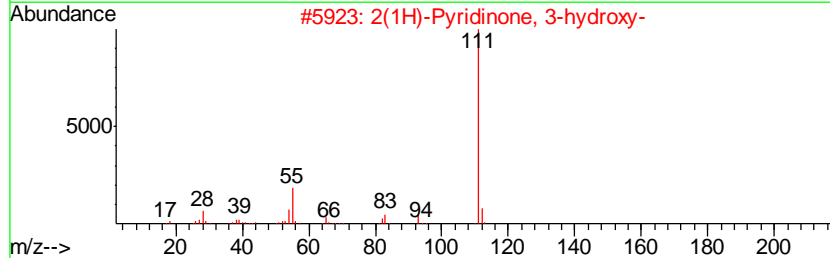
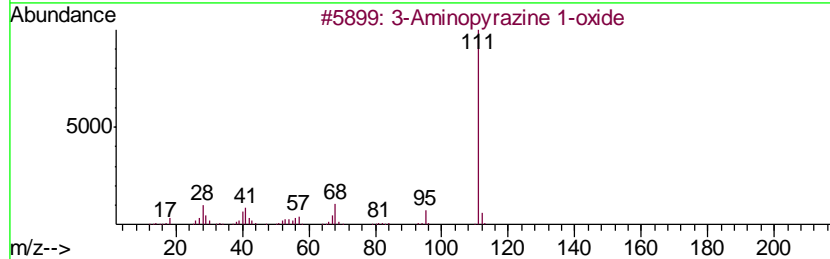
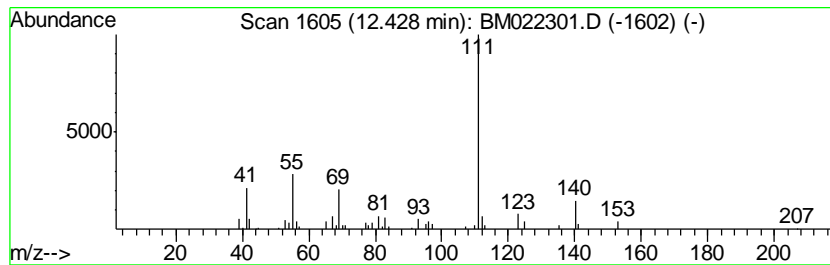
Quant Method : Z:\SVOASRV\HPCHEM1\BNA_M\METHODS\SOM-EPA-BM082219MA.M
 Quant Title : SVOA CALIBRATION

TIC Library : C:\DATABASE\NIST02.L
 TIC Integration Parameters: LSCINT.P

 Peak Number 6 3-Aminopyrazine 1-oxide Concentration Rank 21

R.T.	EstConc	Area	Relative to ISTD	R.T.
12.43	4.75 ng/ul	131143	Acenaphthene-d10	14.21

Hit#	of	Tentative ID	MW	MolForm	CAS#	Qual
1	5	3-Aminopyrazine 1-oxide	111	C4H5N3O	006863-77-0	53
2		2(1H)-Pyridinone, 3-hydroxy-	111	C5H5NO2	016867-04-2	53
3		4-Amino-6-hydroxypyrimidine	111	C4H5N3O	001193-22-2	53
4		Bruceantin	548	C28H36O11	041451-75-6	42
5		2(1H)-Pyrimidinone, 4-amino-	111	C4H5N3O	000071-30-7	42



Data Path : Z:\svoasrv\HPCHEM1\BNA_M\Data\BM082319\
 Data File : BM022301.D
 Acq On : 24 Aug 2019 19:29
 Operator : HP/JU
 Sample : K4373-12
 Misc :
 ALS Vial : 10 Sample Multiplier: 1

Instrument :
 BNA_M
 ClientSampled :
 C0AB4

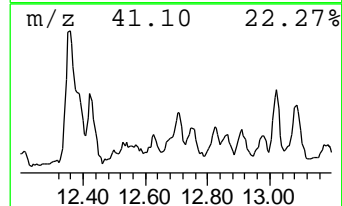
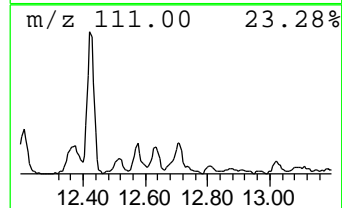
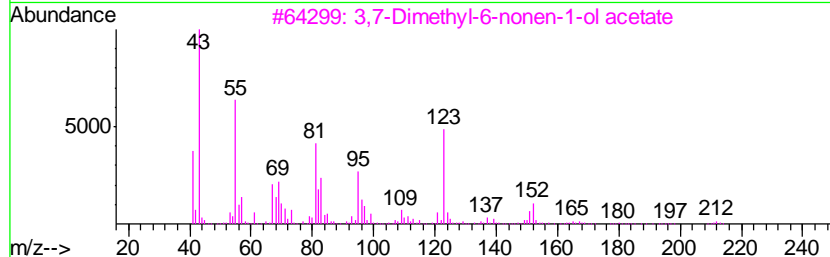
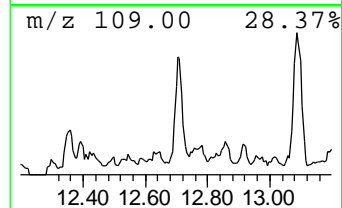
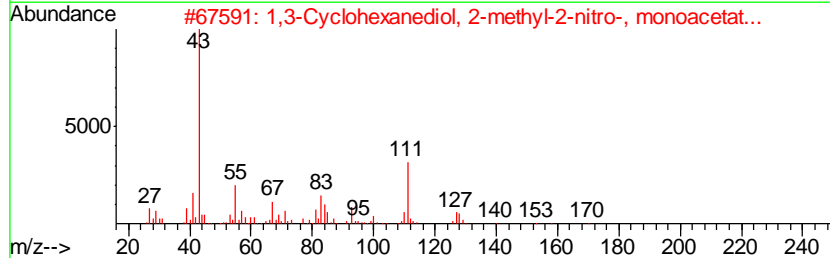
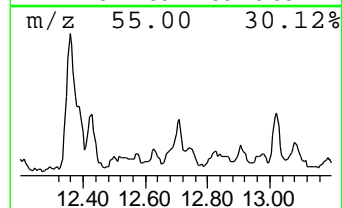
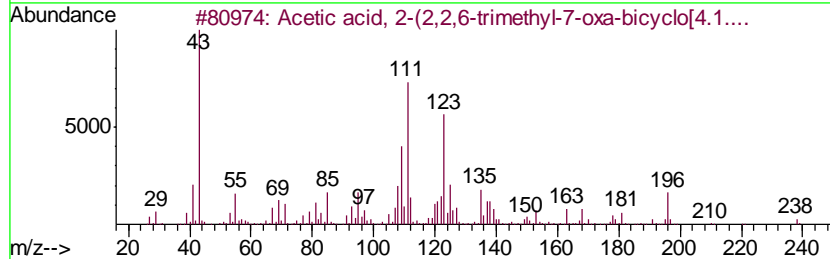
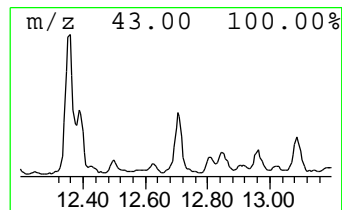
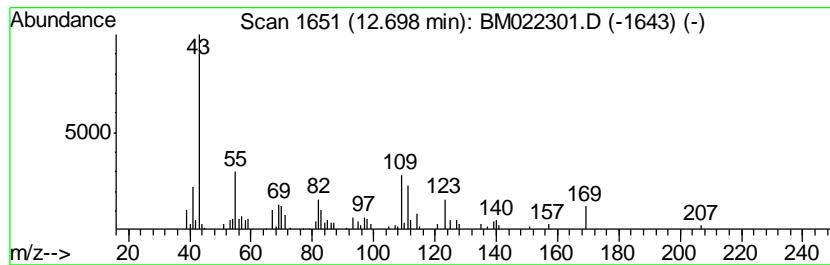
Quant Method : Z:\SVOASRV\HPCHEM1\BNA_M\METHODS\SOM-EPA-BM082219MA.M
 Quant Title : SVOA CALIBRATION

TIC Library : C:\DATABASE\NIST02.L
 TIC Integration Parameters: LSCINT.P

 Peak Number 7 unknown-05 Concentration Rank 13

R.T.	EstConc	Area	Relative to ISTD	R.T.
12.70	6.07 ng/ul	167732	Acenaphthene-d10	14.21

Hit#	of	Tentative ID	MW	MolForm	CAS#	Qual
1	5	Acetic acid, 2-(2,2,6-trimethyl-...	238	C14H22O3	090165-14-3	25
2		1,3-Cyclohexanediol, 2-methyl-2-...	217	C9H15NO5	114454-84-1	10
3		3,7-Dimethyl-6-nonen-1-ol acetate	212	C13H24O2	1000131-34-9	10
4		2,2,6-Trimethyl-6-(2-oxopropyl)t...	184	C11H20O2	144428-78-4	10
5		5,7-Octadien-2-one, 3-acetyl-	166	C10H14O2	185053-98-9	9



Data Path : Z:\svoasrv\HPCHEM1\BNA_M\Data\BM082319\
 Data File : BM022301.D
 Acq On : 24 Aug 2019 19:29
 Operator : HP/JU
 Sample : K4373-12
 Misc :
 ALS Vial : 10 Sample Multiplier: 1

Instrument :
 BNA_M
 ClientSampled :
 C0AB4

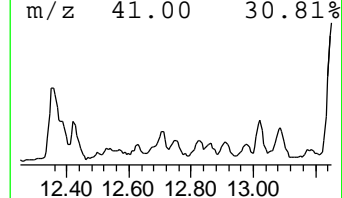
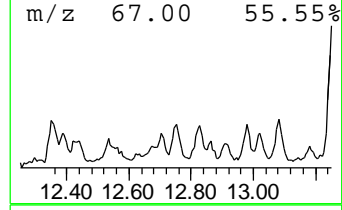
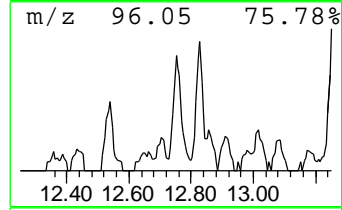
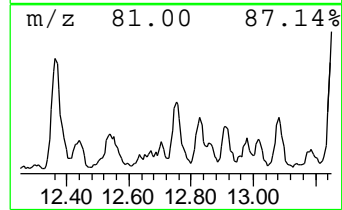
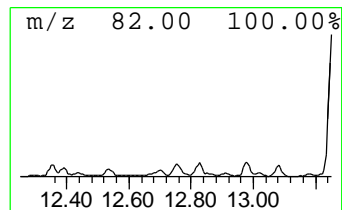
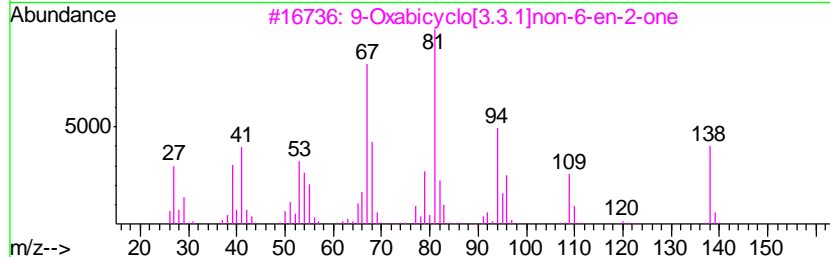
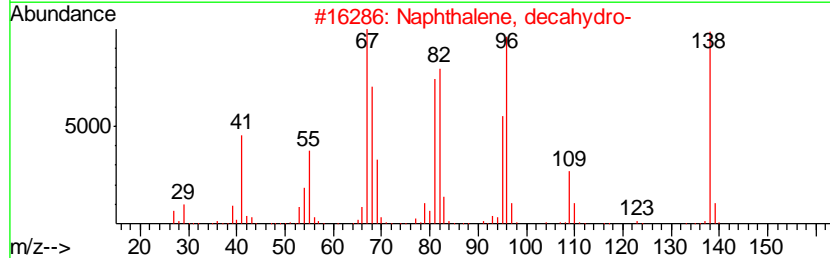
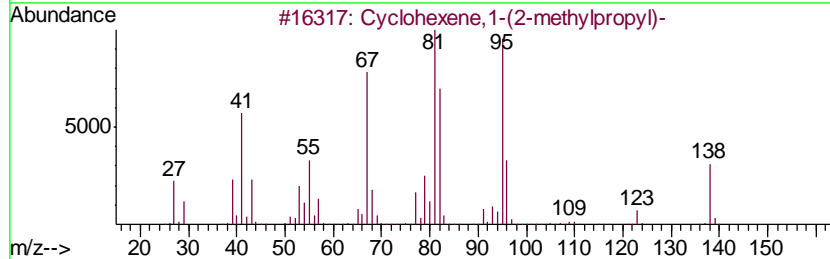
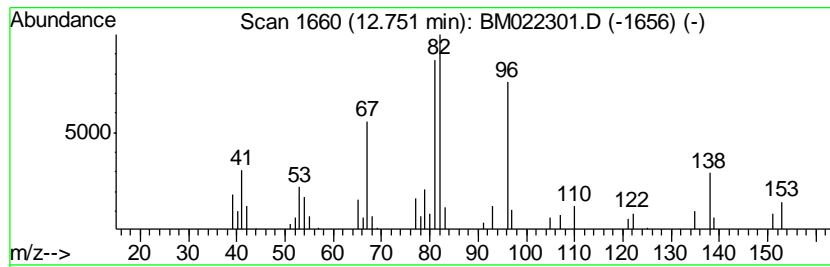
Quant Method : Z:\SVOASRV\HPCHEM1\BNA_M\METHODS\SOM-EPA-BM082219MA.M
 Quant Title : SVOA CALIBRATION

TIC Library : C:\DATABASE\NIST02.L
 TIC Integration Parameters: LSCINT.P

 Peak Number 8 unknown-06 Concentration Rank 29

R.T.	EstConc	Area	Relative to ISTD	R.T.
12.75	2.86 ng/ul	79023	Acenaphthene-d10	14.21

Hit#	of	Tentative ID	MW	MolForm	CAS#	Qual
1	5	Cyclohexene,1-(2-methylpropyl)-	138	C10H18	003983-03-7	49
2		Naphthalene, decahydro-	138	C10H18	000091-17-8	49
3		9-Oxabicyclo[3.3.1]non-6-en-2-one	138	C8H10O2	1000190-61-5	45
4		2-Cyclohexen-1-one, 4,4,6-trimet...	138	C9H14O	013395-73-8	35
5		1H-Imidazole, 4-methyl-	82	C4H6N2	000822-36-6	35



Data Path : Z:\svoasrv\HPCHEM1\BNA_M\Data\BM082319\
 Data File : BM022301.D
 Acq On : 24 Aug 2019 19:29
 Operator : HP/JU
 Sample : K4373-12
 Misc :
 ALS Vial : 10 Sample Multiplier: 1

Instrument :
 BNA_M
 ClientSampled :
 C0AB4

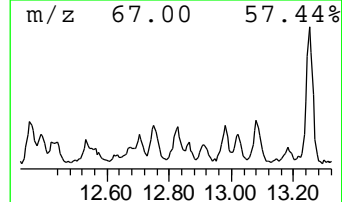
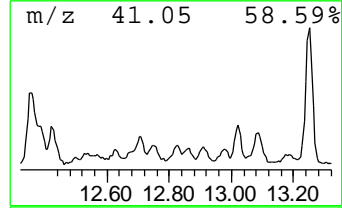
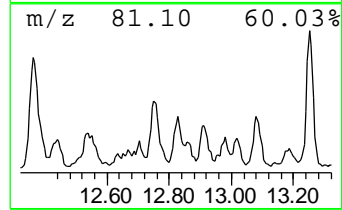
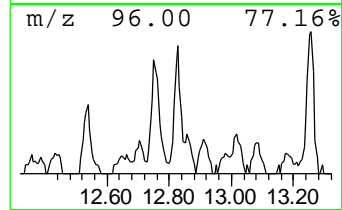
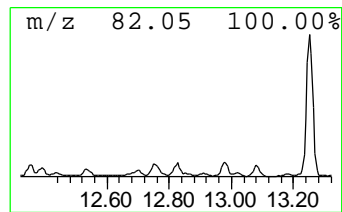
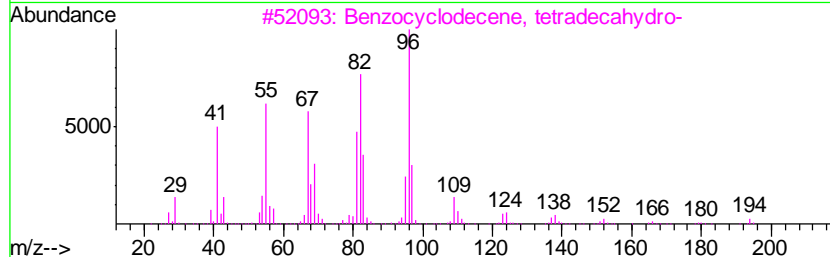
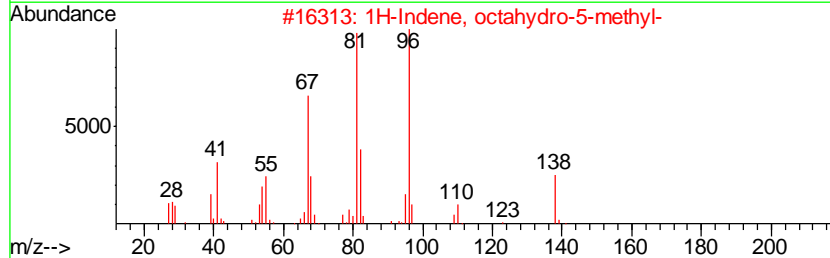
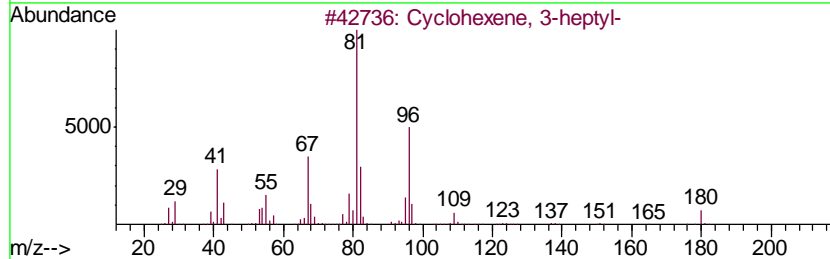
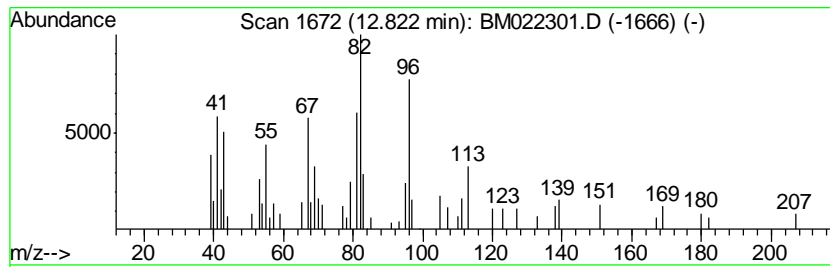
Quant Method : Z:\SVOASRV\HPCHEM1\BNA_M\METHODS\SOM-EPA-BM082219MA.M
 Quant Title : SVOA CALIBRATION

TIC Library : C:\DATABASE\NIST02.L
 TIC Integration Parameters: LSCINT.P

 Peak Number 9 unknown-07 Concentration Rank 26

R.T.	EstConc	Area	Relative to ISTD	R.T.
12.82	3.26 ng/ul	90153	Acenaphthene-d10	14.21

Hit#	of	Tentative ID	MW	MolForm	CAS#	Qual
1	5	Cyclohexene, 3-heptyl-	180	C13H24	015232-93-6	46
2		1H-Indene, octahydro-5-methyl-	138	C10H18	019744-64-0	43
3		Benzocyclodecene, tetradecahydro-	194	C14H26	061142-06-1	43
4		Bicyclo[5.3.0]decane	138	C10H18	005661-80-3	43
5		3-Hexyne	82	C6H10	000928-49-4	30



Data Path : Z:\svoasrv\HPCHEM1\BNA_M\Data\BM082319\
 Data File : BM022301.D
 Acq On : 24 Aug 2019 19:29
 Operator : HP/JU
 Sample : K4373-12
 Misc :
 ALS Vial : 10 Sample Multiplier: 1

Instrument :
 BNA_M
 ClientSampled :
 C0AB4

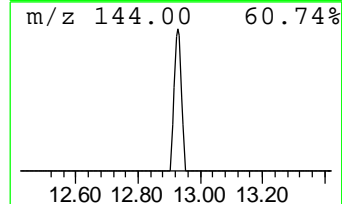
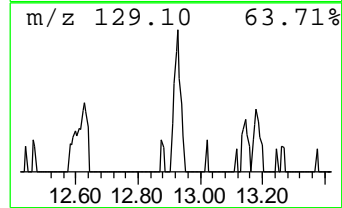
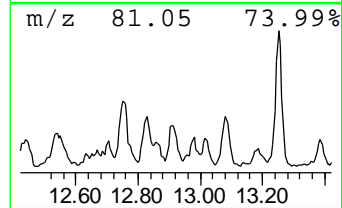
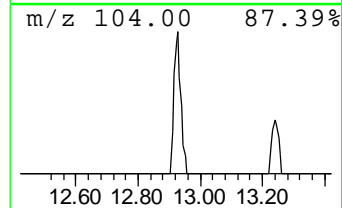
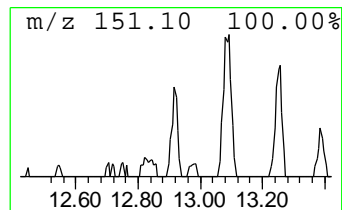
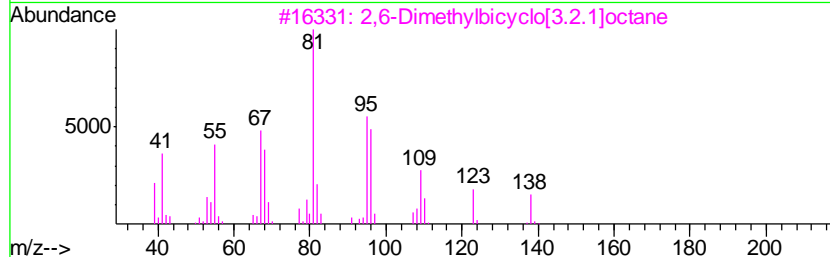
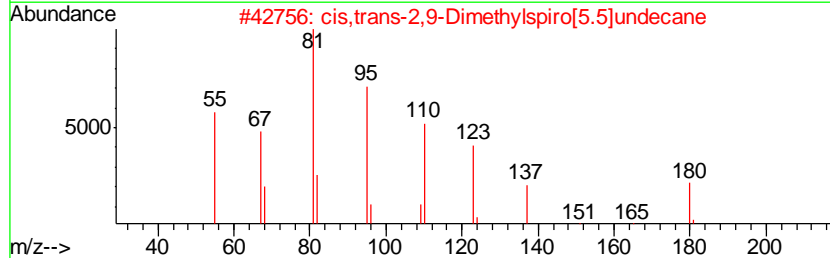
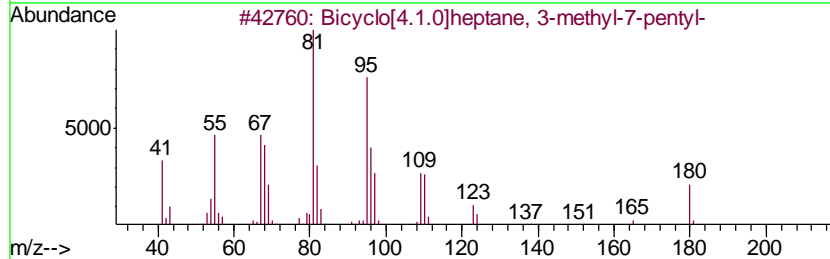
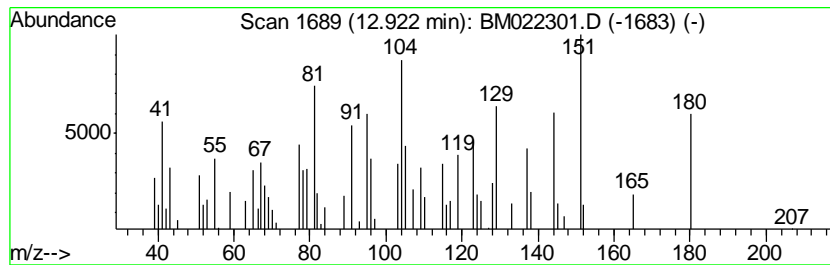
Quant Method : Z:\SVOASRV\HPCHEM1\BNA_M\METHODS\SOM-EPA-BM082219MA.M
 Quant Title : SVOA CALIBRATION

TIC Library : C:\DATABASE\NIST02.L
 TIC Integration Parameters: LSCINT.P

 Peak Number 10 Bicyclo[4.1.0]heptane, 3-me... Concentration Rank 31

R.T.	EstConc	Area	Relative to ISTD	R.T.
12.92	2.80 ng/ul	77458	Acenaphthene-d10	14.21

Hit#	of	Tentative ID	MW	MolForm	CAS#	Qual
1	5	Bicyclo[4.1.0]heptane, 3-methyl-...	180	C13H24	041977-48-4	52
2		cis,trans-2,9-Dimethylspiro[5.5]...	180	C13H24	095530-74-8	43
3		2,6-Dimethylbicyclo[3.2.1]octane	138	C10H18	1000215-28-2	42
4		3-Octyne, 2,2-dimethyl-	138	C10H18	019482-57-6	30
5		3-Octyne, 2,2,7-trimethyl-	152	C11H20	055402-13-6	27



Data Path : Z:\svoasrv\HPCHEM1\BNA_M\Data\BM082319\
 Data File : BM022301.D
 Acq On : 24 Aug 2019 19:29
 Operator : HP/JU
 Sample : K4373-12
 Misc :
 ALS Vial : 10 Sample Multiplier: 1

Instrument :
 BNA_M
 ClientSampled :
 C0AB4

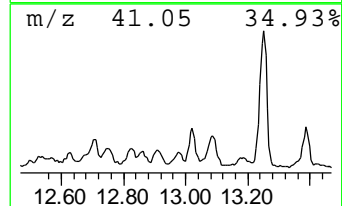
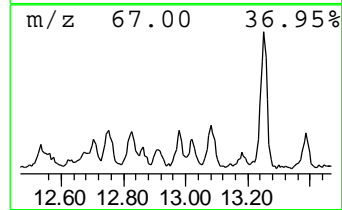
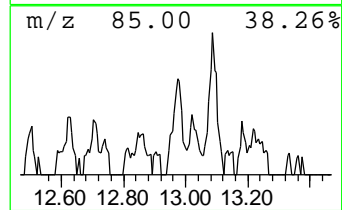
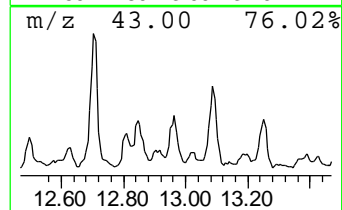
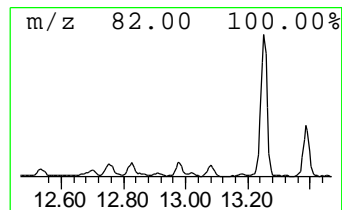
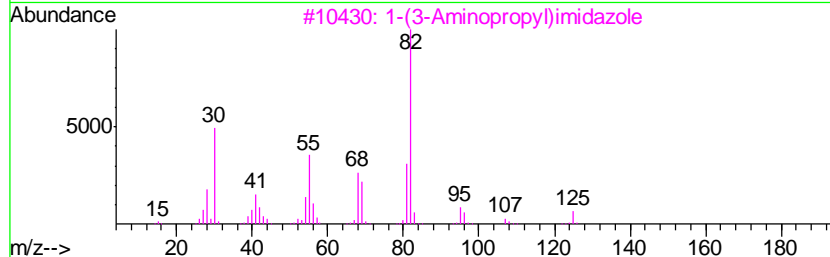
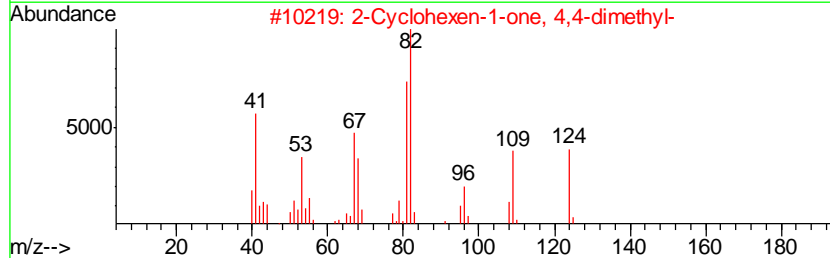
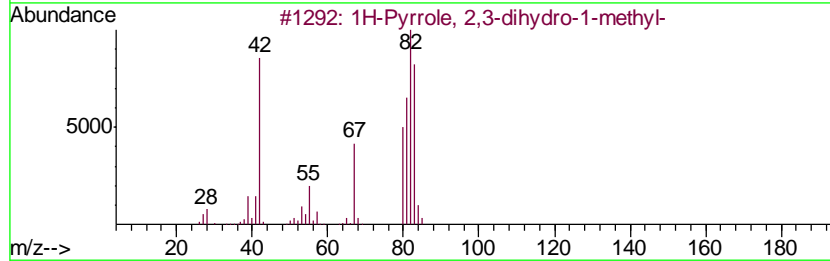
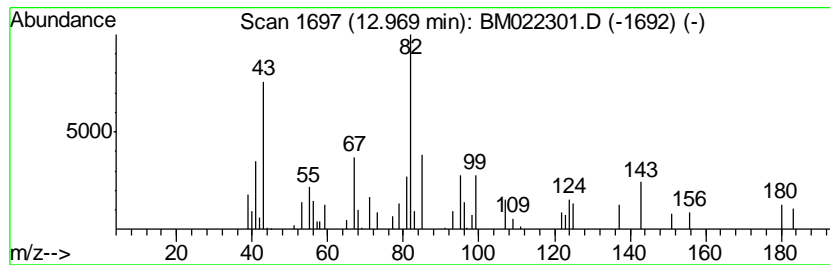
Quant Method : Z:\SVOASRV\HPCHEM1\BNA_M\METHODS\SOM-EPA-BM082219MA.M
 Quant Title : SVOA CALIBRATION

TIC Library : C:\DATABASE\NIST02.L
 TIC Integration Parameters: LSCINT.P

 Peak Number 11 unknown-08 Concentration Rank 33

R.T.	EstConc	Area	Relative to ISTD	R.T.
12.97	2.33 ng/ul	64408	Acenaphthene-d10	14.21

Hit#	of	Tentative ID	MW	MolForm	CAS#	Qual
1	5	1H-Pyrrole, 2,3-dihydro-1-methyl-	83	C5H9N	033838-11-8	43
2		2-Cyclohexen-1-one, 4,4-dimethyl-	124	C8H12O	001073-13-8	40
3		1-(3-Aminopropyl)imidazole	125	C6H11N3	005036-48-6	38
4		1H-Indole, octahydro-	125	C8H15N	004375-14-8	38
5		Cyclopropane, 2-(1,1-dimethyl-2-...	138	C10H18	081051-15-2	38



Data Path : Z:\svoasrv\HPCHEM1\BNA_M\Data\BM082319\
 Data File : BM022301.D
 Acq On : 24 Aug 2019 19:29
 Operator : HP/JU
 Sample : K4373-12
 Misc :
 ALS Vial : 10 Sample Multiplier: 1

Instrument :
 BNA_M
 ClientSampled :
 C0AB4

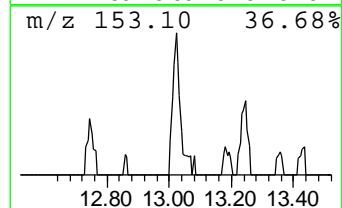
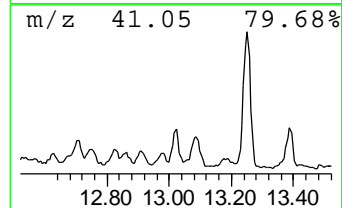
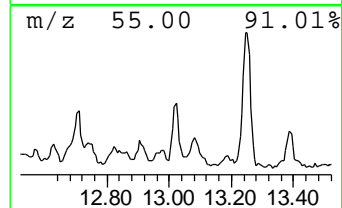
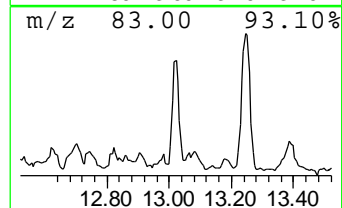
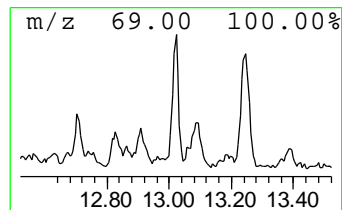
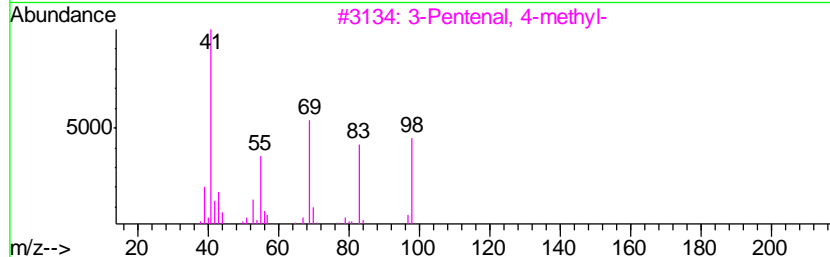
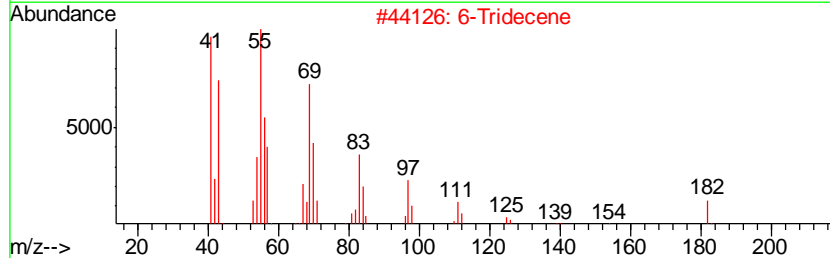
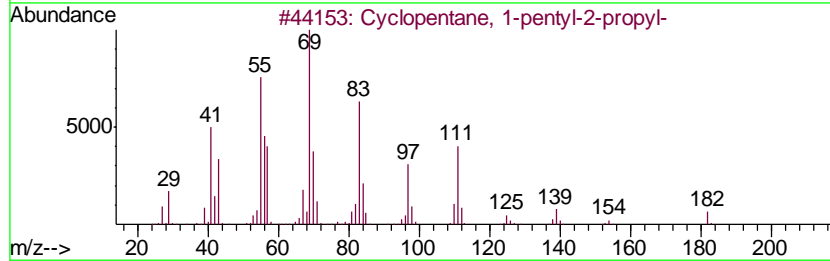
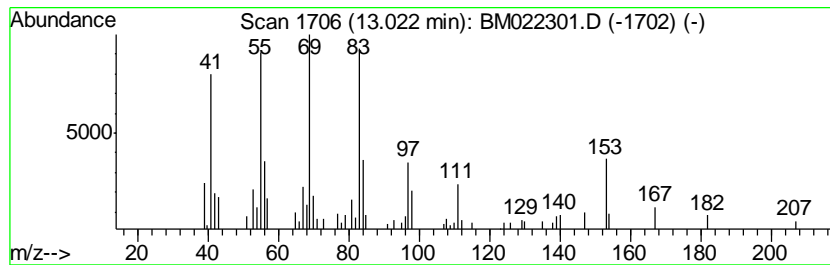
Quant Method : Z:\SVOASRV\HPCHEM1\BNA_M\METHODS\SOM-EPA-BM082219MA.M
 Quant Title : SVOA CALIBRATION

TIC Library : C:\DATABASE\NIST02.L
 TIC Integration Parameters: LSCINT.P

 Peak Number 12 (DEL) Alkane: Cyclic13.02 Concentration Rank 24

R.T.	EstConc	Area	Relative to ISTD	R.T.
13.02	3.57 ng/ul	98663	Acenaphthene-d10	14.21

Hit#	of	Tentative ID	MW	MolForm	CAS#	Qual
1	5	Cyclopentane, 1-pentyl-2-propyl-	182	C13H26	062199-51-3	46
2		6-Tridecene	182	C13H26	024949-38-0	38
3		3-Pentenal, 4-methyl-	98	C6H10O	005362-50-5	38
4		5-Methyl-(E)-2-hepten-4-one	126	C8H14O	102322-83-8	30
5		6-Methyl-1,7-diazabicyclo[4.1.0]...	112	C6H12N2	108602-71-7	27



Data Path : Z:\svoasrv\HPCHEM1\BNA_M\Data\BM082319\
 Data File : BM022301.D
 Acq On : 24 Aug 2019 19:29
 Operator : HP/JU
 Sample : K4373-12
 Misc :
 ALS Vial : 10 Sample Multiplier: 1

Instrument :
 BNA_M
 ClientSampled :
 C0AB4

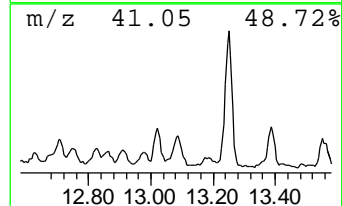
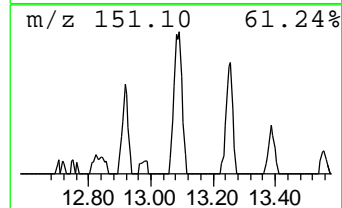
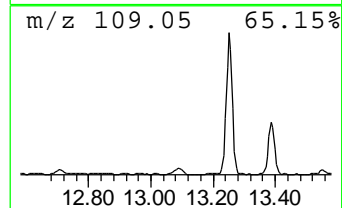
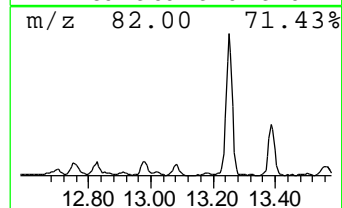
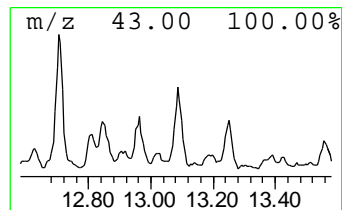
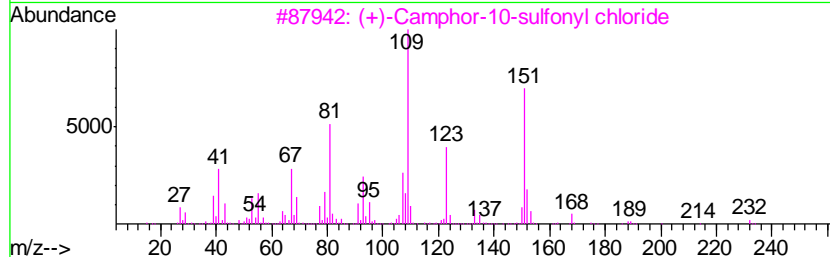
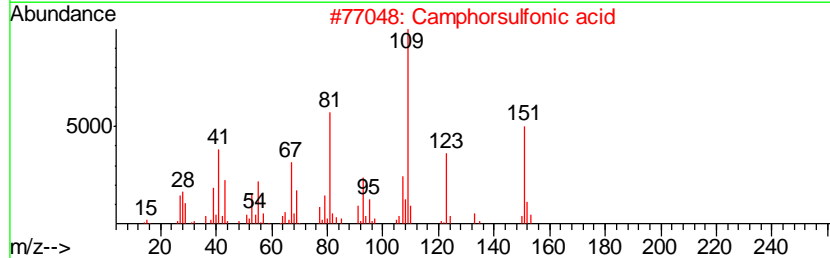
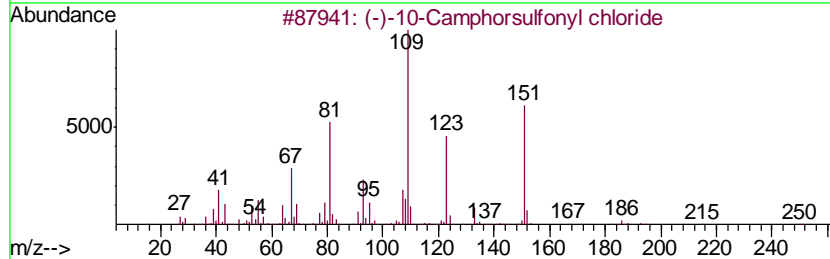
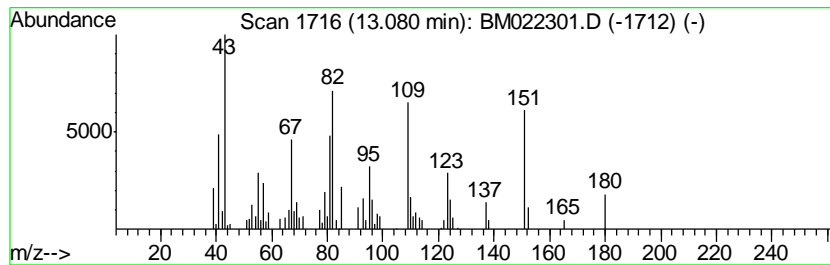
Quant Method : Z:\SVOASRV\HPCHEM1\BNA_M\METHODS\SOM-EPA-BM082219MA.M
 Quant Title : SVOA CALIBRATION

TIC Library : C:\DATABASE\NIST02.L
 TIC Integration Parameters: LSCINT.P

 Peak Number 13 unknown-09 Concentration Rank 12

R.T.	EstConc	Area	Relative to ISTD	R.T.
13.08	6.09 ng/ul	168288	Acenaphthene-d10	14.21

Hit#	of	Tentative ID	MW	MolForm	CAS#	Qual
1	5	(-)-10-Camphorsulfonyl chloride	250	C10H15ClO3S	039262-22-1	47
2		Camphorsulfonic acid	232	C10H16O4S	003144-16-9	47
3		(+)-Camphor-10-sulfonyl chloride	250	C10H15ClO3S	021286-54-4	38
4		2,6-Heptadienal, 2,4-dimethyl-	138	C9H14O	085136-08-9	38
5		Acetaldehyde, (3,3-dimethylcyclo...	152	C10H16O	026532-25-2	30



Data Path : Z:\svoasrv\HPCHEM1\BNA_M\Data\BM082319\
 Data File : BM022301.D
 Acq On : 24 Aug 2019 19:29
 Operator : HP/JU
 Sample : K4373-12
 Misc :
 ALS Vial : 10 Sample Multiplier: 1

Instrument :
 BNA_M
 ClientSampleID :
 C0AB4

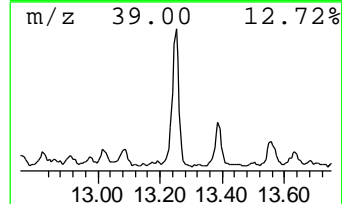
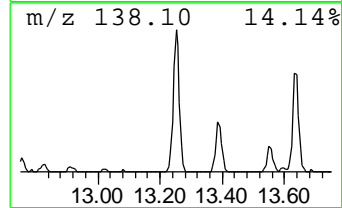
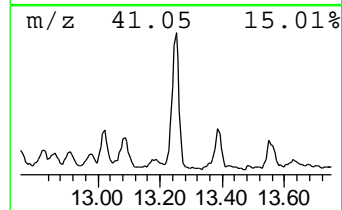
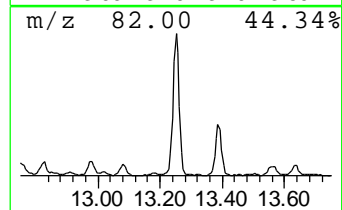
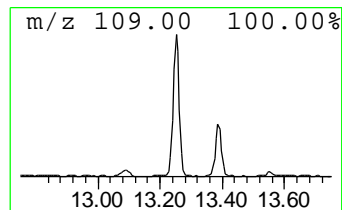
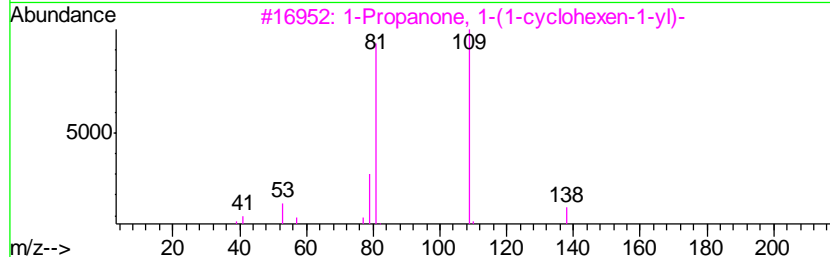
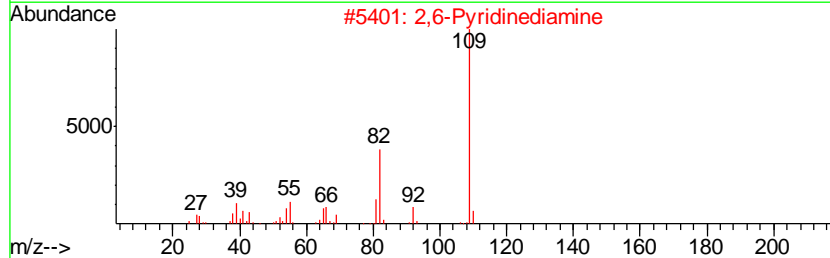
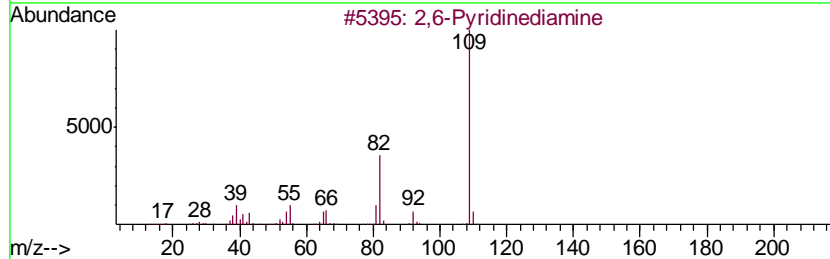
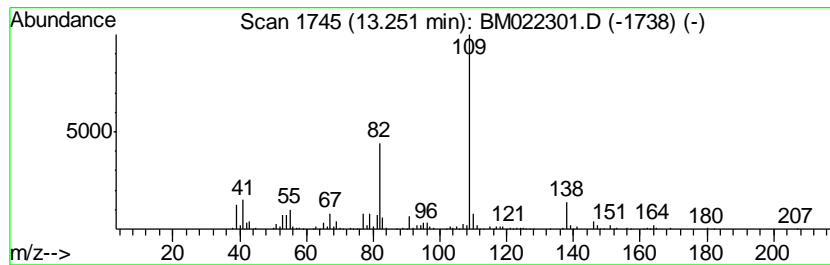
Quant Method : Z:\SVOASRV\HPCHEM1\BNA_M\METHODS\SOM-EPA-BM082219MA.M
 Quant Title : SVOA CALIBRATION

TIC Library : C:\DATABASE\NIST02.L
 TIC Integration Parameters: LSCINT.P

 Peak Number 14 2,6-Pyridinediamine Concentration Rank 1

R.T.	EstConc	Area	Relative to ISTD	R.T.
13.25	31.14 ng/ul	859825	Acenaphthene-d10	14.21

Hit#	of	Tentative ID	MW	MolForm	CAS#	Qual
1	5	2,6-Pyridinediamine	109	C5H7N3	000141-86-6	64
2		2,6-Pyridinediamine	109	C5H7N3	000141-86-6	64
3		1-Propanone, 1-(1-cyclohexen-1-yl)-	138	C9H14O	001655-03-4	50
4		2,3-Pyridinediamine	109	C5H7N3	000452-58-4	50
5		m-Isopropoxyaniline	151	C9H13NO	041406-00-2	49



Data Path : Z:\svoasrv\HPCHEM1\BNA_M\Data\BM082319\
 Data File : BM022301.D
 Acq On : 24 Aug 2019 19:29
 Operator : HP/JU
 Sample : K4373-12
 Misc :
 ALS Vial : 10 Sample Multiplier: 1

Instrument :
 BNA_M
 ClientSampleID :
 C0AB4

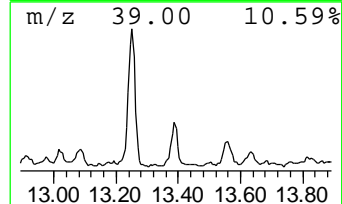
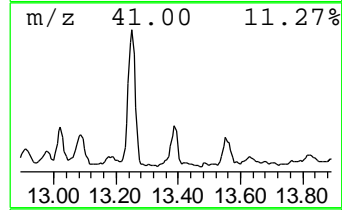
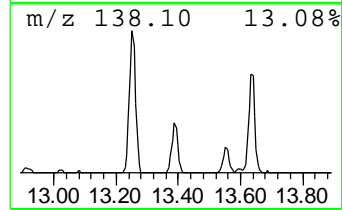
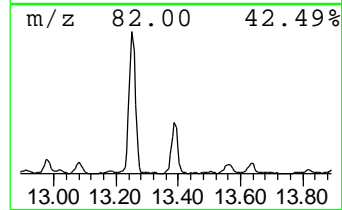
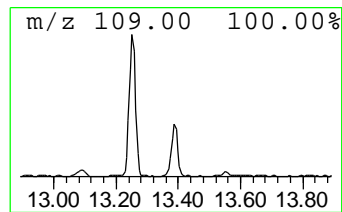
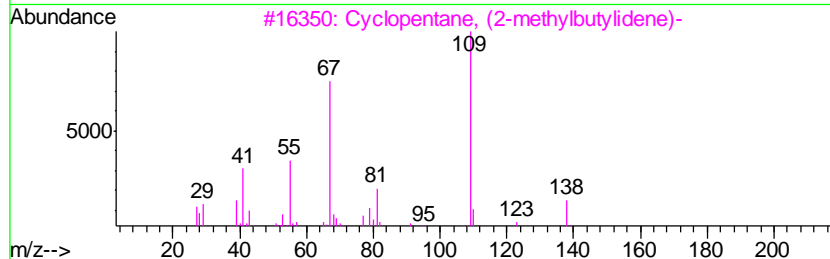
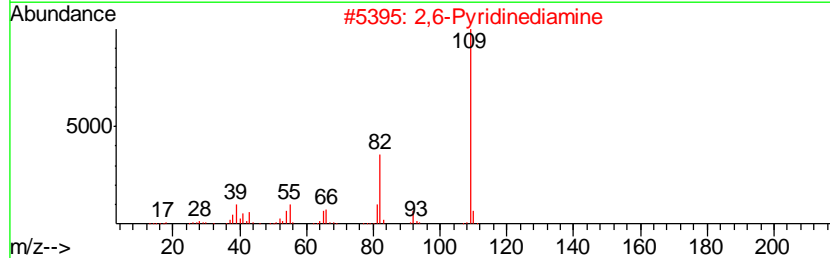
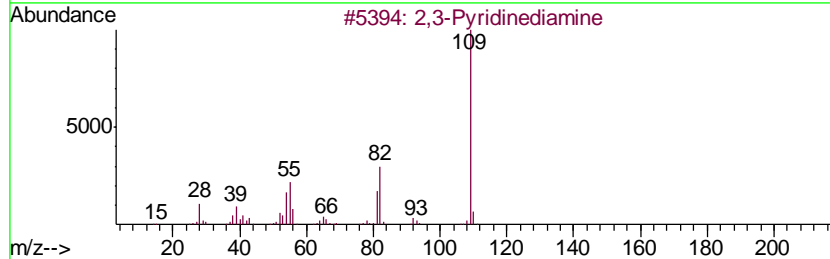
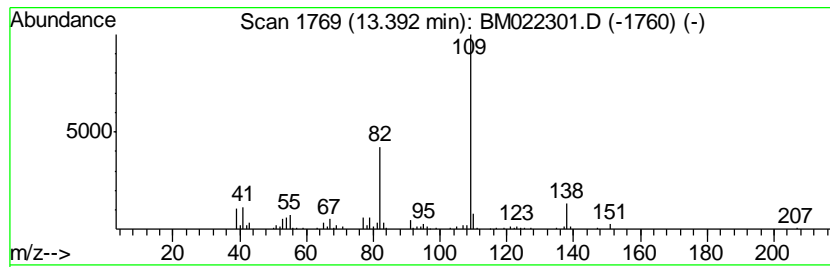
Quant Method : Z:\SVOASRV\HPCHEM1\BNA_M\METHODS\SOM-EPA-BM082219MA.M
 Quant Title : SVOA CALIBRATION

TIC Library : C:\DATABASE\NIST02.L
 TIC Integration Parameters: LSCINT.P

 Peak Number 15 2,3-Pyridinediamine Concentration Rank 8

R.T.	EstConc	Area	Relative to ISTD	R.T.
13.39	9.11 ng/ul	251549	Acenaphthene-d10	14.21

Hit#	of	Tentative ID	MW	MolForm	CAS#	Qual
1	5	2,3-Pyridinediamine	109	C5H7N3	000452-58-4	72
2		2,6-Pyridinediamine	109	C5H7N3	000141-86-6	64
3		Cyclopentane, (2-methylbutylidene)-	138	C10H18	053366-54-4	58
4		1-Propanone, 1-(1-cyclohexen-1-yl)-	138	C9H14O	001655-03-4	50
5		2,4-Heptadienal, 2,4-dimethyl-	138	C9H14O	042452-48-2	50



Data Path : Z:\svoasrv\HPCHEM1\BNA_M\Data\BM082319\
 Data File : BM022301.D
 Acq On : 24 Aug 2019 19:29
 Operator : HP/JU
 Sample : K4373-12
 Misc :
 ALS Vial : 10 Sample Multiplier: 1

Instrument :
 BNA_M
 ClientSampleID :
 C0AB4

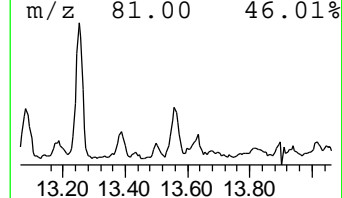
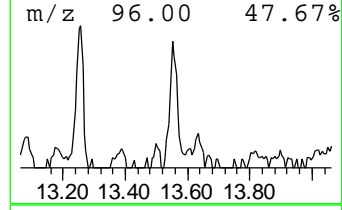
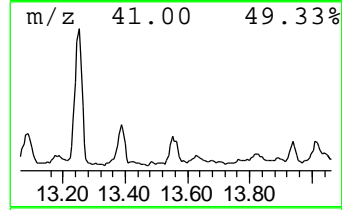
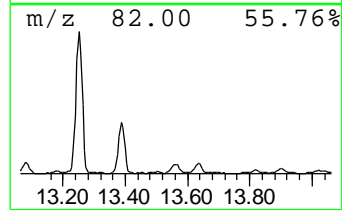
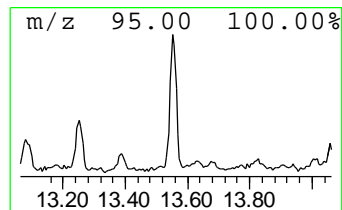
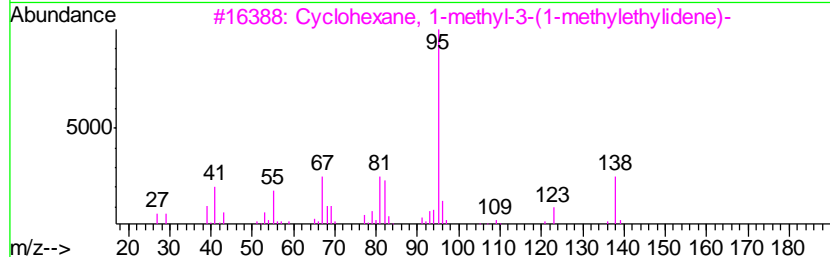
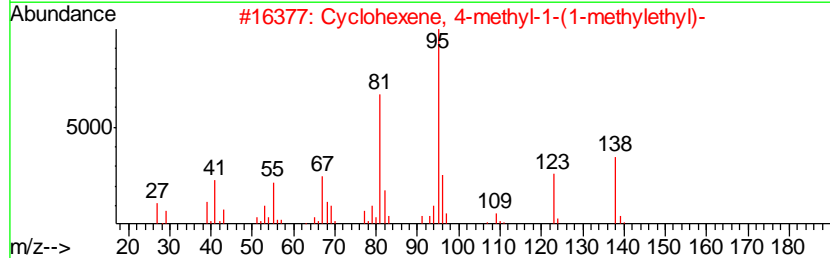
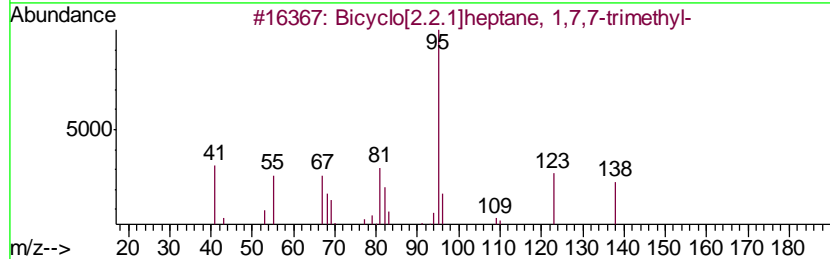
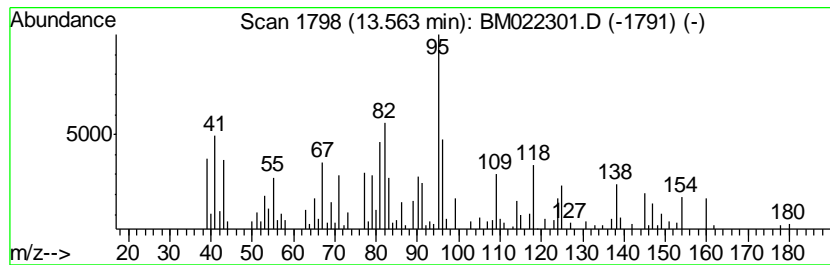
Quant Method : Z:\SVOASRV\HPCHEM1\BNA_M\METHODS\SOM-EPA-BM082219MA.M
 Quant Title : SVOA CALIBRATION

TIC Library : C:\DATABASE\NIST02.L
 TIC Integration Parameters: LSCINT.P

 Peak Number 16 unknown-10 Concentration Rank 10

R.T.	EstConc	Area	Relative to ISTD	R.T.
13.56	7.40 ng/ul	204262	Acenaphthene-d10	14.21

Hit#	of	Tentative ID	MW	MolForm	CAS#	Qual
1	5	Bicyclo[2.2.1]heptane, 1,7,7-tri...	138	C10H18	000464-15-3	43
2		Cyclohexene, 4-methyl-1-(1-methy...	138	C10H18	000500-00-5	43
3		Cyclohexane, 1-methyl-3-(1-methy...	138	C10H18	013828-34-7	43
4		2-Nonyne	124	C9H16	019447-29-1	38
5		Bicyclo[4.1.0]heptane, 3,7,7-tri...	138	C10H18	002778-68-9	38



Data Path : Z:\svoasrv\HPCHEM1\BNA_M\Data\BM082319\
 Data File : BM022301.D
 Acq On : 24 Aug 2019 19:29
 Operator : HP/JU
 Sample : K4373-12
 Misc :
 ALS Vial : 10 Sample Multiplier: 1

Instrument :
 BNA_M
 ClientSampled :
 C0AB4

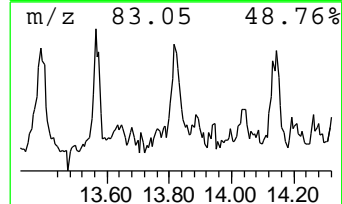
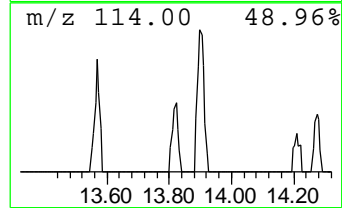
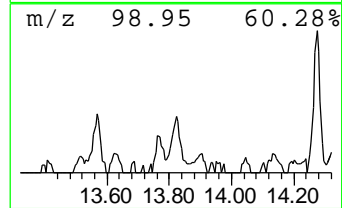
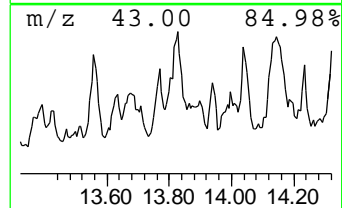
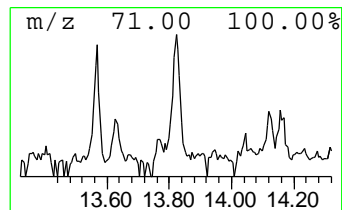
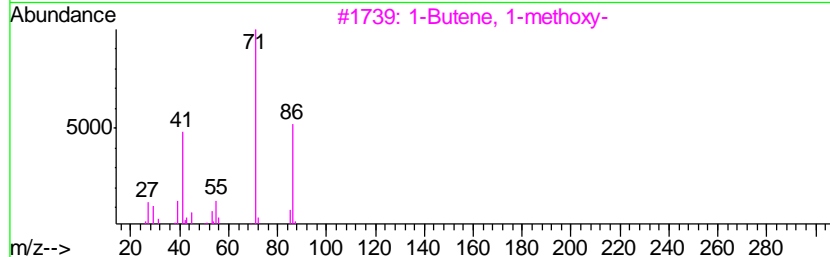
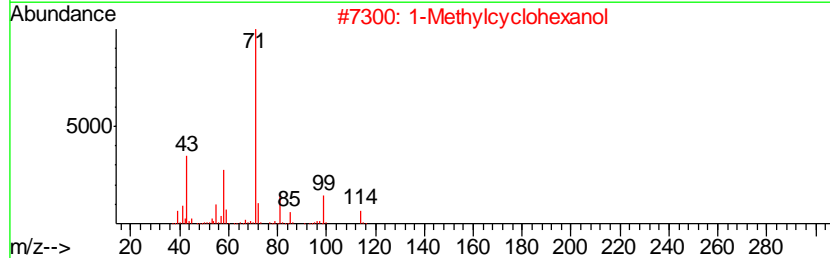
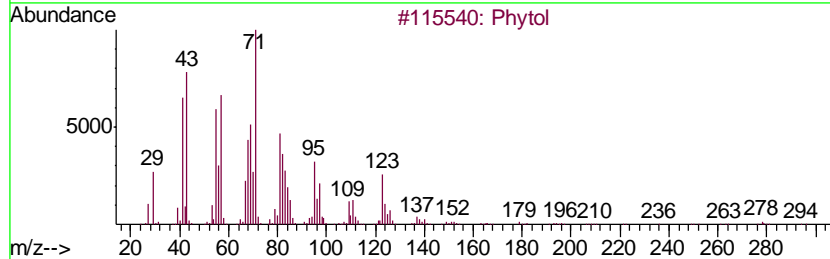
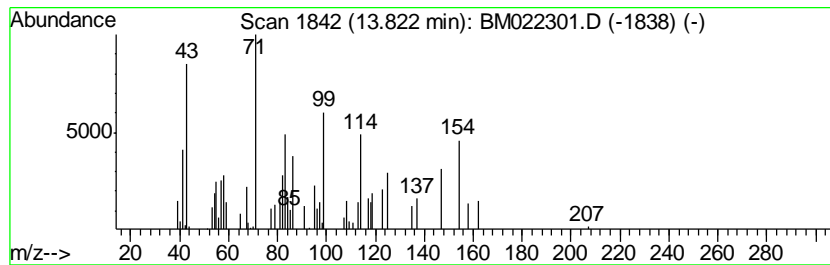
Quant Method : Z:\SVOASRV\HPCHEM1\BNA_M\METHODS\SOM-EPA-BM082219MA.M
 Quant Title : SVOA CALIBRATION

TIC Library : C:\DATABASE\NIST02.L
 TIC Integration Parameters: LSCINT.P

 Peak Number 17 unknown-11 Concentration Rank 35

R.T.	EstConc	Area	Relative to ISTD	R.T.
13.82	2.13 ng/ul	58925	Acenaphthene-d10	14.21

Hit#	of	Tentative ID	MW	MolForm	CAS#	Qual
1	5	Phytol	296	C20H40O	000150-86-7	27
2		1-Methylcyclohexanol	114	C7H14O	000590-67-0	25
3		1-Butene, 1-methoxy-	86	C5H10O	029512-02-5	18
4		2-Butene, 1-methoxy-, (E)-	86	C5H10O	010034-14-7	14
5		trans-1-Methoxy-1-butene	86	C5H10O	010034-13-6	14



Data Path : Z:\svoasrv\HPCHEM1\BNA_M\Data\BM082319\
 Data File : BM022301.D
 Acq On : 24 Aug 2019 19:29
 Operator : HP/JU
 Sample : K4373-12
 Misc :
 ALS Vial : 10 Sample Multiplier: 1

Instrument :
 BNA_M
 ClientSampled :
 C0AB4

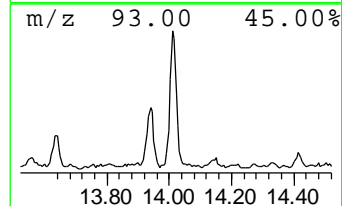
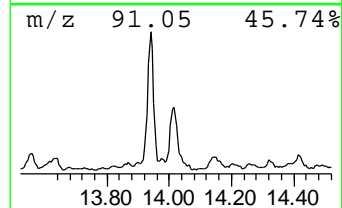
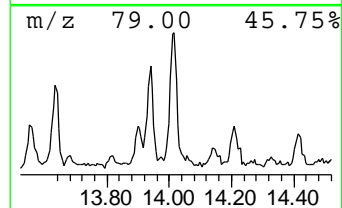
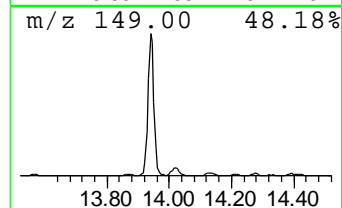
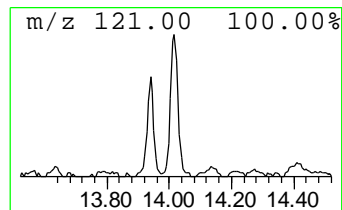
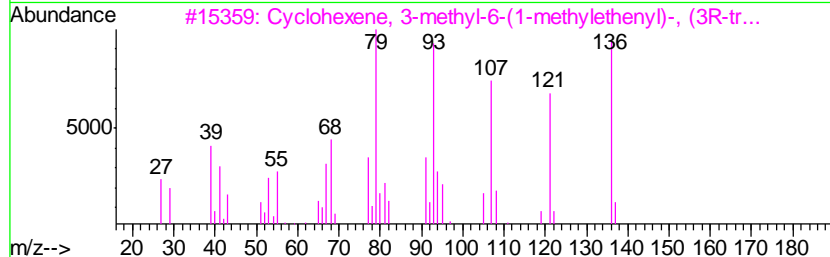
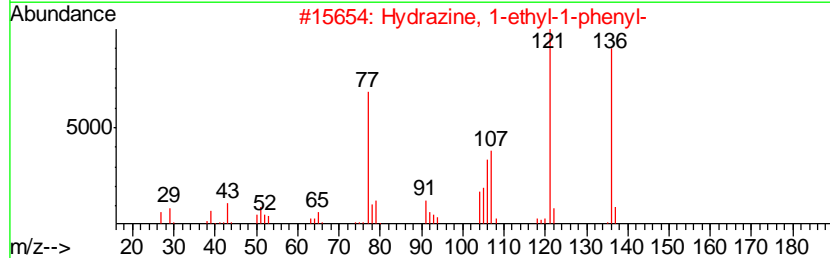
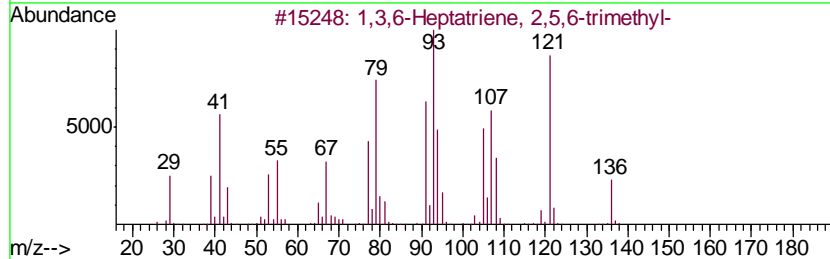
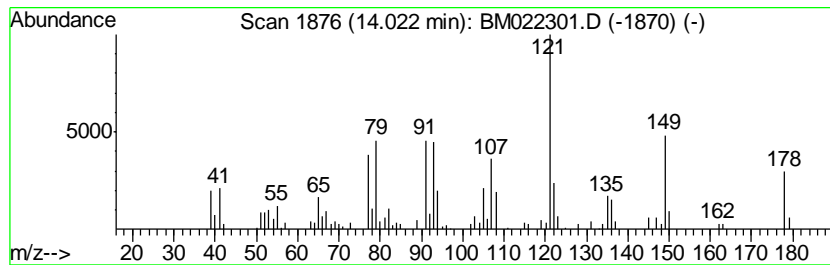
Quant Method : Z:\SVOASRV\HPCHEM1\BNA_M\METHODS\SOM-EPA-BM082219MA.M
 Quant Title : SVOA CALIBRATION

TIC Library : C:\DATABASE\NIST02.L
 TIC Integration Parameters: LSCINT.P

 Peak Number 18 unknown-12 Concentration Rank 5

R.T.	EstConc	Area	Relative to ISTD	R.T.
14.02	11.20 ng/ul	309351	Acenaphthene-d10	14.21

Hit#	of	Tentative ID	MW	MolForm	CAS#	Qual
1	5	1,3,6-Heptatriene, 2,5,6-trimethyl-	136	C10H16	042123-66-0	43
2		Hydrazine, 1-ethyl-1-phenyl-	136	C8H12N2	000644-21-3	38
3		Cyclohexene, 3-methyl-6-(1-methy...	136	C10H16	005113-87-1	27
4		1,3,5-Heptatriene, (E,E)-	94	C7H10	017679-93-5	25
5		2-Butanone, 4-(4-methoxyphenyl)-	178	C11H14O2	000104-20-1	25



Data Path : Z:\svoasrv\HPCHEM1\BNA_M\Data\BM082319\
 Data File : BM022301.D
 Acq On : 24 Aug 2019 19:29
 Operator : HP/JU
 Sample : K4373-12
 Misc :
 ALS Vial : 10 Sample Multiplier: 1

Instrument :
 BNA_M
 ClientSampled :
 C0AB4

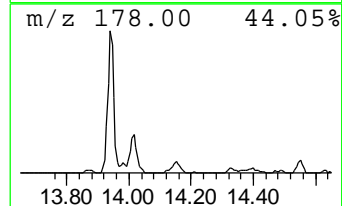
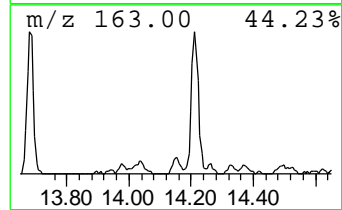
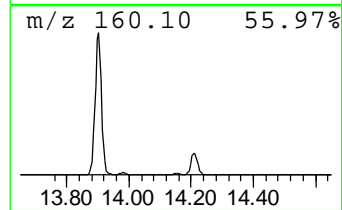
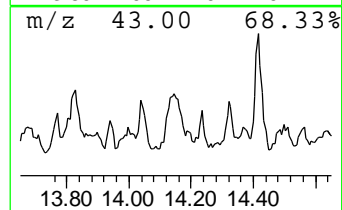
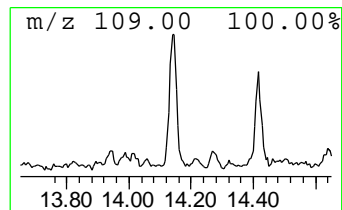
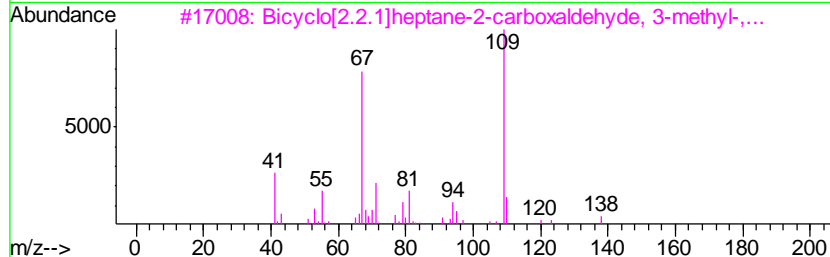
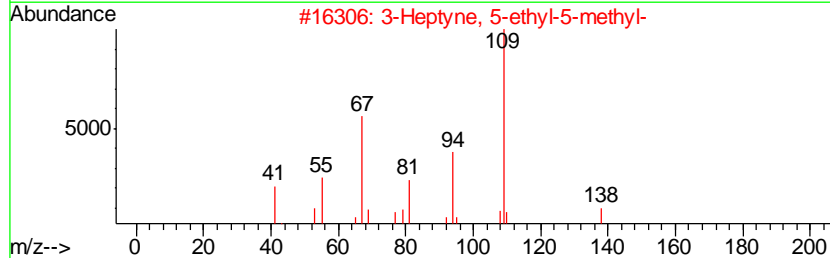
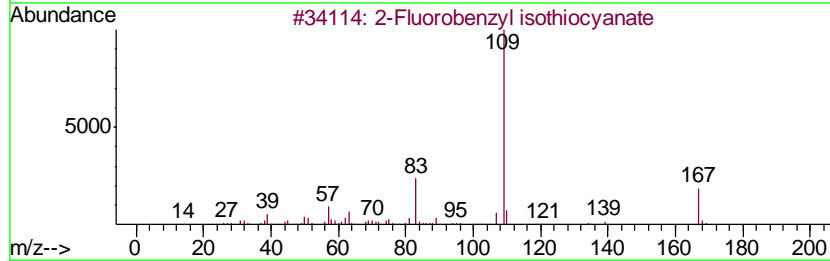
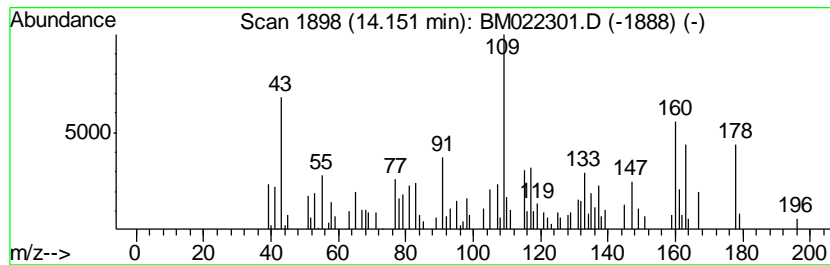
Quant Method : Z:\SVOASRV\HPCHEM1\BNA_M\METHODS\SOM-EPA-BM082219MA.M
 Quant Title : SVOA CALIBRATION

TIC Library : C:\DATABASE\NIST02.L
 TIC Integration Parameters: LSCINT.P

 Peak Number 19 unknown-13 Concentration Rank 15

R.T.	EstConc	Area	Relative to ISTD	R.T.
14.15	5.56 ng/ul	153533	Acenaphthene-d10	14.21

Hit#	of	Tentative ID	MW	MolForm	CAS#	Qual
1	5	2-Fluorobenzyl isothiocyanate	167	C8H6FNS	064382-80-5	35
2		3-Heptyne, 5-ethyl-5-methyl-	138	C10H18	061228-10-2	30
3		Bicyclo[2.2.1]heptane-2-carboxal...	138	C9H14O	015780-36-6	30
4		Phenol, o-amino-	109	C6H7NO	000095-55-6	27
5		Phenol, 3-amino-	109	C6H7NO	000591-27-5	27



Data Path : Z:\svoasrv\HPCHEM1\BNA_M\Data\BM082319\
 Data File : BM022301.D
 Acq On : 24 Aug 2019 19:29
 Operator : HP/JU
 Sample : K4373-12
 Misc :
 ALS Vial : 10 Sample Multiplier: 1

Instrument :
 BNA_M
 ClientSampleId :
 C0AB4

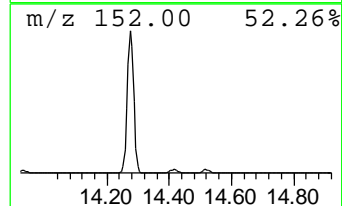
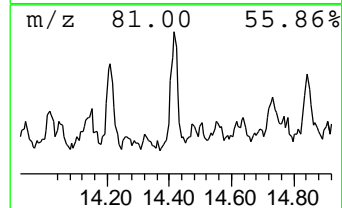
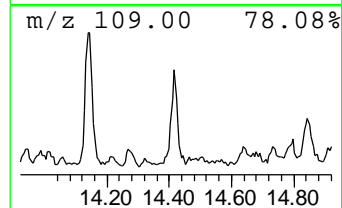
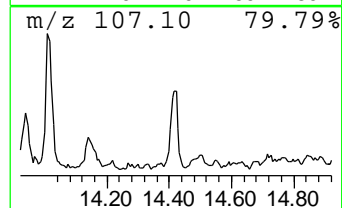
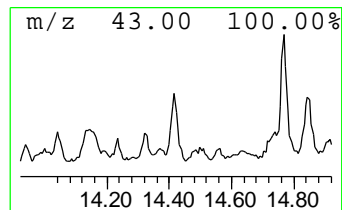
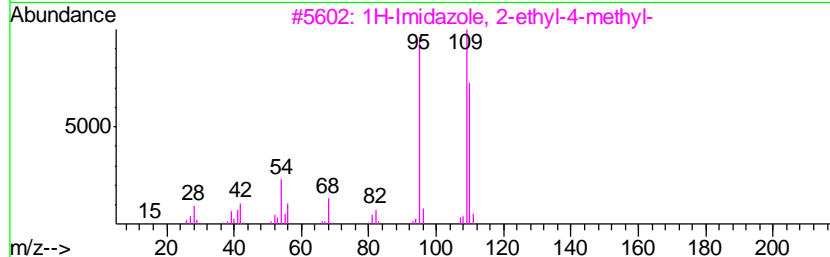
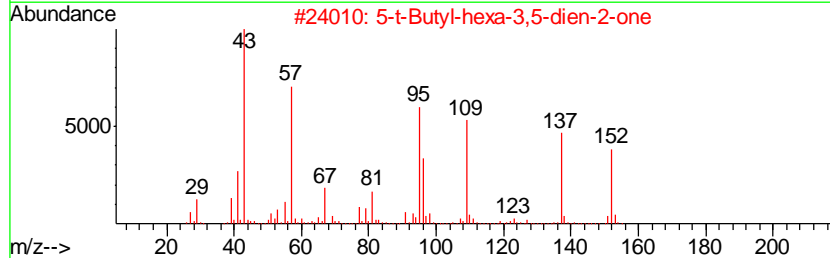
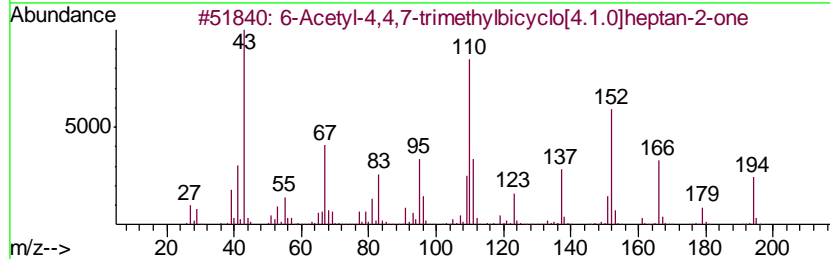
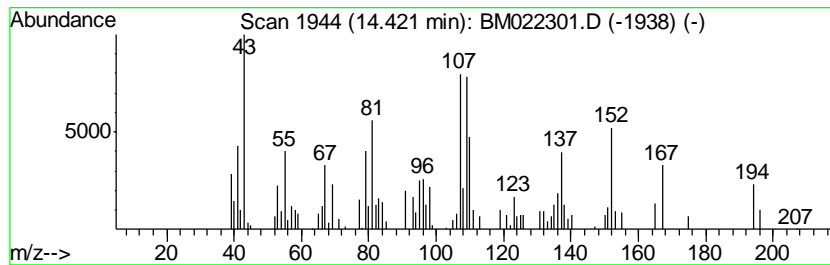
Quant Method : Z:\SVOASRV\HPCHEM1\BNA_M\METHODS\SOM-EPA-BM082219MA.M
 Quant Title : SVOA CALIBRATION

TIC Library : C:\DATABASE\NIST02.L
 TIC Integration Parameters: LSCINT.P

 Peak Number 20 unknown-14 Concentration Rank 17

R.T.	EstConc	Area	Relative to ISTD	R.T.
14.42	5.37 ng/ul	148301	Acenaphthene-d10	14.21

Hit#	of	Tentative ID	MW	MolForm	CAS#	Qual
1	5	6-Acetyl-4,4,7-trimethylbicyclo[...]	194	C12H18O2	1000194-36-0	46
2		5-t-Butyl-hexa-3,5-dien-2-one	152	C10H16O	1000192-56-4	41
3		1H-Imidazole, 2-ethyl-4-methyl-	110	C6H10N2	000931-36-2	38
4		1-(3-Hydroxyphenyl)urea	152	C7H8N2O2	000701-82-6	35
5		(4-Fluorophenyl)acetamide	153	C8H8FNO	000332-29-6	35



Data Path : Z:\svoasrv\HPCHEM1\BNA_M\Data\BM082319\
 Data File : BM022301.D
 Acq On : 24 Aug 2019 19:29
 Operator : HP/JU
 Sample : K4373-12
 Misc :
 ALS Vial : 10 Sample Multiplier: 1

Instrument :
 BNA_M
 ClientSampled :
 C0AB4

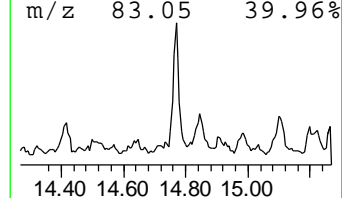
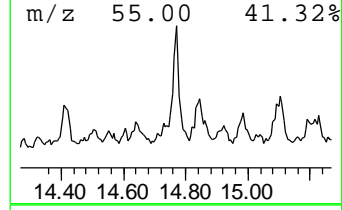
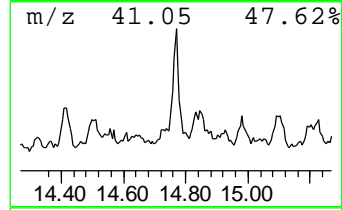
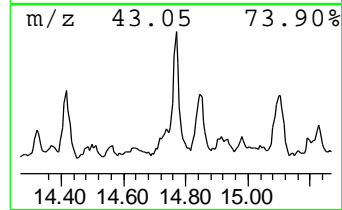
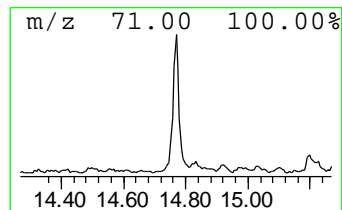
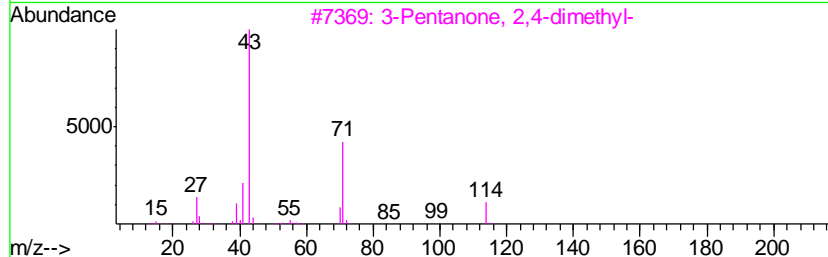
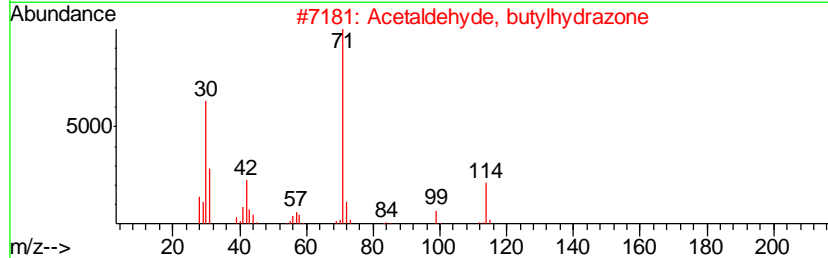
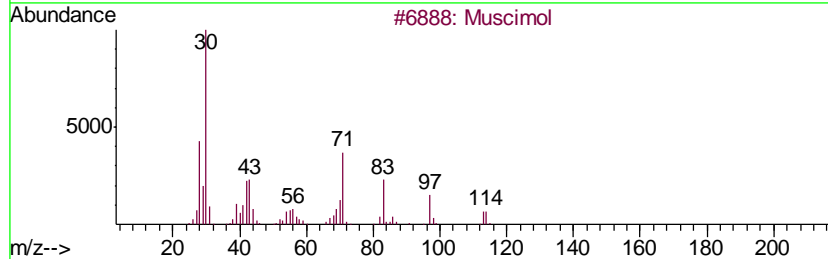
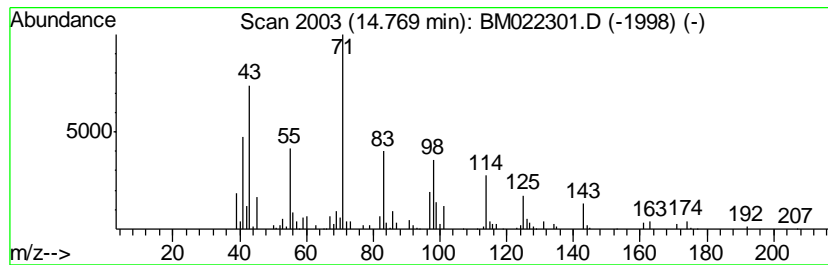
Quant Method : Z:\SVOASRV\HPCHEM1\BNA_M\METHODS\SOM-EPA-BM082219MA.M
 Quant Title : SVOA CALIBRATION

TIC Library : C:\DATABASE\NIST02.L
 TIC Integration Parameters: LSCINT.P

 Peak Number 21 unknown-15 Concentration Rank 20

R.T.	EstConc	Area	Relative to ISTD	R.T.
14.77	5.05 ng/ul	139527	Acenaphthene-d10	14.21

Hit#	of	Tentative ID	MW	MolForm	CAS#	Qual
1	5	Muscimol	114	C4H6N2O2	002763-96-4	38
2		Acetaldehyde, butylhydrazone	114	C6H14N2	020607-72-1	35
3		3-Pentanone, 2,4-dimethyl-	114	C7H14O	000565-80-0	27
4		3-Hexanone, 2-methyl-	114	C7H14O	007379-12-6	27
5		2,4,4-Trimethyl-1-hexene	126	C9H18	051174-12-0	27



Data Path : Z:\svoasrv\HPCHEM1\BNA_M\Data\BM082319\
 Data File : BM022301.D
 Acq On : 24 Aug 2019 19:29
 Operator : HP/JU
 Sample : K4373-12
 Misc :
 ALS Vial : 10 Sample Multiplier: 1

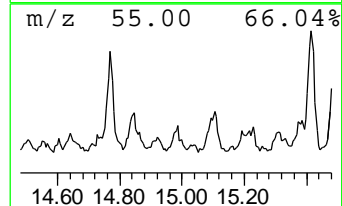
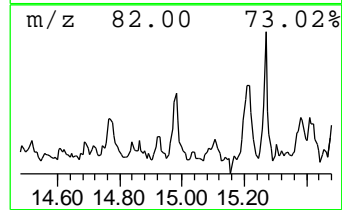
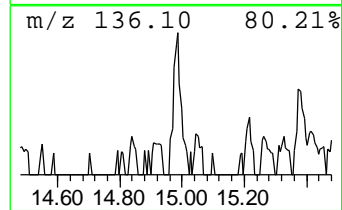
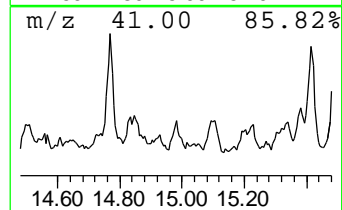
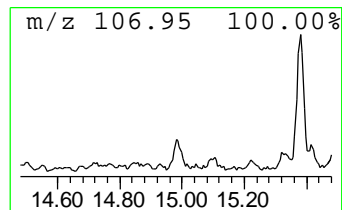
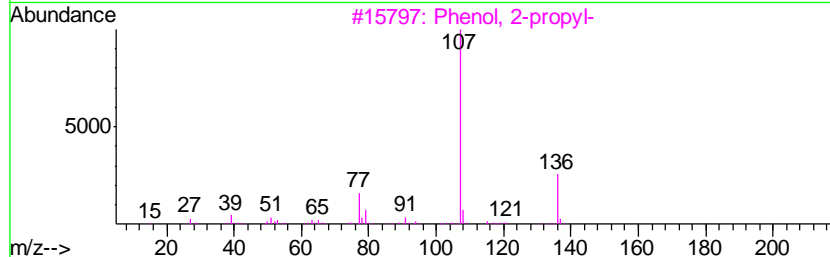
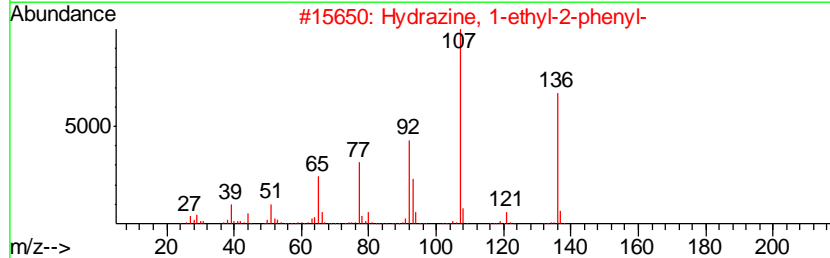
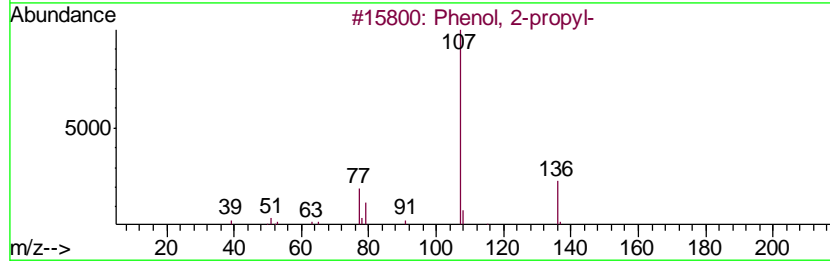
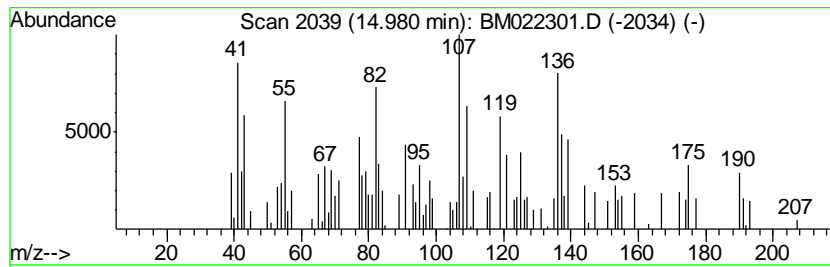
Instrument :
 BNA_M
 ClientSampled :
 C0AB4

Quant Method : Z:\SVOASRV\HPCHEM1\BNA_M\METHODS\SOM-EPA-BM082219MA.M
 Quant Title : SVOA CALIBRATION

TIC Library : C:\DATABASE\NIST02.L
 TIC Integration Parameters: LSCINT.P

 Peak Number 22 unknown-16 Concentration Rank 30

R.T.	EstConc	Area	Relative to ISTD	R.T.
14.98	2.83 ng/ul	78078	Acenaphthene-d10	14.21
Hit# of	5	Tentative ID	MW MolForm	CAS# Qual
1		Phenol, 2-propyl-	136 C9H12O	000644-35-9 27
2		Hydrazine, 1-ethyl-2-phenyl-	136 C8H12N2	000622-82-2 27
3		Phenol, 2-propyl-	136 C9H12O	000644-35-9 27
4		2-Methoxybenzylamine	137 C8H11NO	006850-57-3 22
5		2-Methoxybenzylamine	137 C8H11NO	006850-57-3 22



Data Path : Z:\svoasrv\HPCHEM1\BNA_M\Data\BM082319\
 Data File : BM022301.D
 Acq On : 24 Aug 2019 19:29
 Operator : HP/JU
 Sample : K4373-12
 Misc :
 ALS Vial : 10 Sample Multiplier: 1

Instrument :
 BNA_M
 ClientSampleID :
 C0AB4

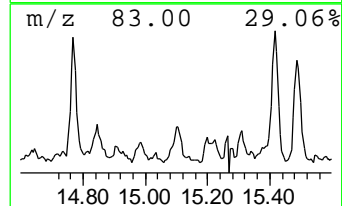
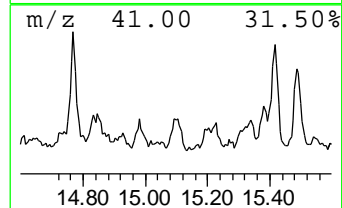
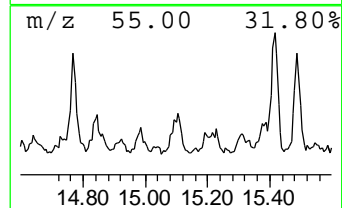
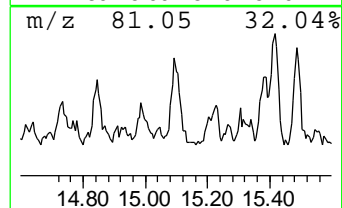
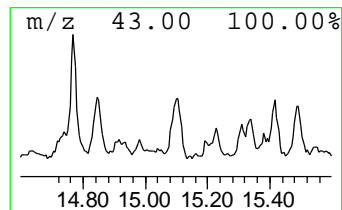
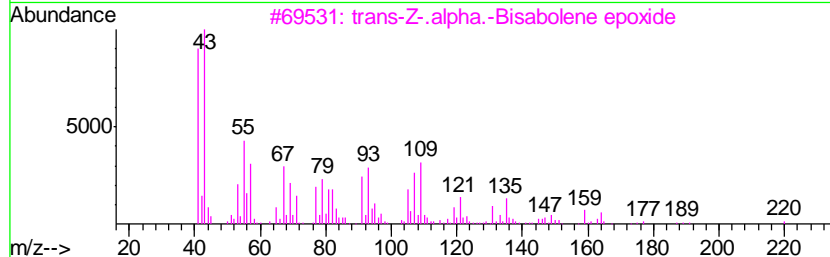
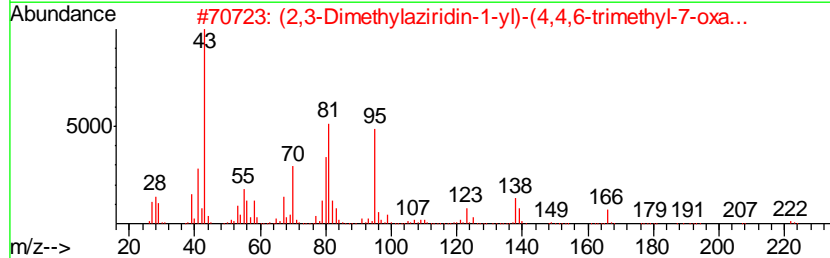
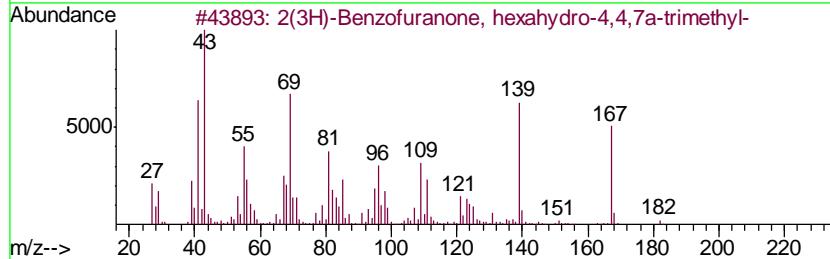
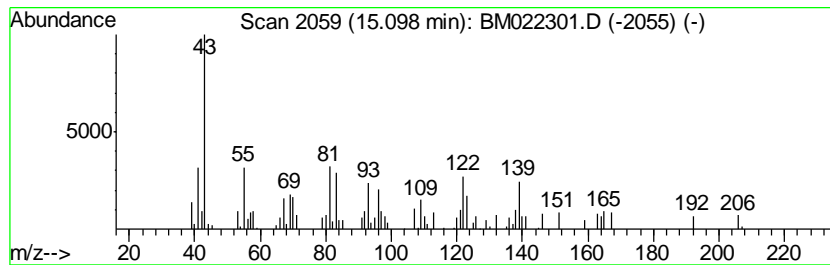
Quant Method : Z:\SVOASRV\HPCHEM1\BNA_M\METHODS\SOM-EPA-BM082219MA.M
 Quant Title : SVOA CALIBRATION

TIC Library : C:\DATABASE\NIST02.L
 TIC Integration Parameters: LSCINT.P

 Peak Number 23 unknown-17 Concentration Rank 23

R.T.	EstConc	Area	Relative to ISTD	R.T.
15.10	4.43 ng/ul	122284	Acenaphthene-d10	14.21

Hit#	of	Tentative ID	MW	MolForm	CAS#	Qual
1	5	2(3H)-Benzofuranone, hexahydro-4...	182	C11H18O2	016778-27-1	28
2		(2,3-Dimethylaziridin-1-yl)-(4,4...	222	C13H22N2O	1000190-93-7	10
3		trans-Z-.alpha.-Bisabolene epoxide	220	C15H24O	1000131-71-1	10
4		2-(2-Methoxyphenyl)ethylamine	151	C9H13NO	002045-79-6	10
5		2,6-Octadiene, 2,6-dimethyl-	138	C10H18	002792-39-4	10



Data Path : Z:\svoasrv\HPCHEM1\BNA_M\Data\BM082319\
 Data File : BM022301.D
 Acq On : 24 Aug 2019 19:29
 Operator : HP/JU
 Sample : K4373-12
 Misc :
 ALS Vial : 10 Sample Multiplier: 1

Instrument :
 BNA_M
 ClientSampleId :
 C0AB4

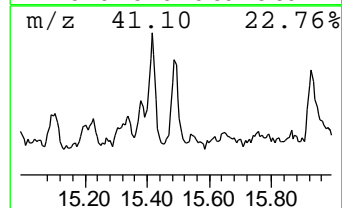
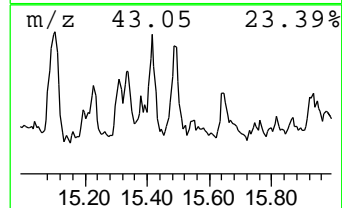
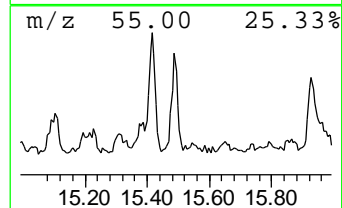
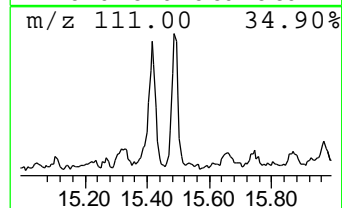
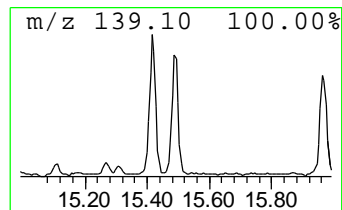
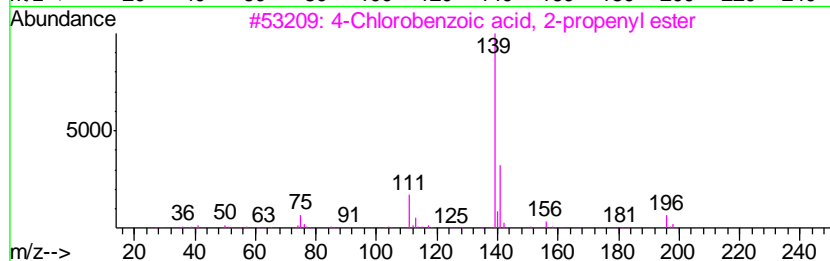
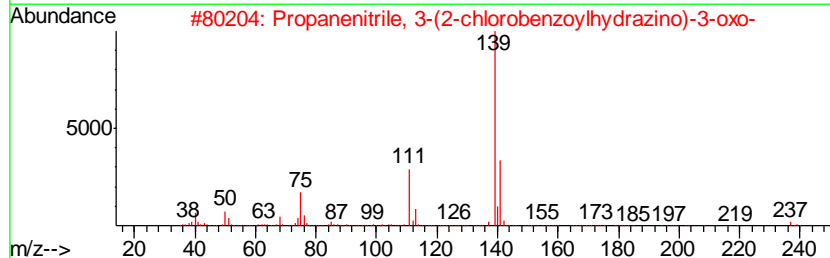
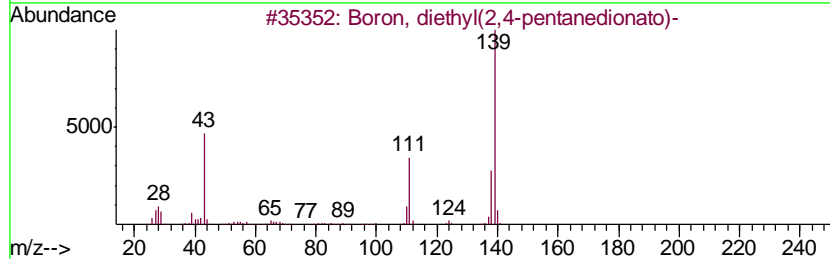
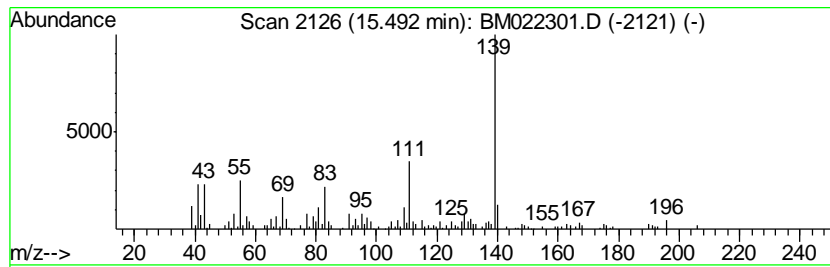
Quant Method : Z:\SVOASRV\HPCHEM1\BNA_M\METHODS\SOM-EPA-BM082219MA.M
 Quant Title : SVOA CALIBRATION

TIC Library : C:\DATABASE\NIST02.L
 TIC Integration Parameters: LSCINT.P

 Peak Number 24 Boron, diethyl(2,4-pentaned... Concentration Rank 9

R.T.	EstConc	Area	Relative to ISTD	R.T.
15.49	7.71 ng/ul	212793	Acenaphthene-d10	14.21

Hit#	of	Tentative ID	MW	MolForm	CAS#	Qual
1	5	Boron, diethyl(2,4-pentanedionato)-	168	C9H17BO2	019469-60-4	53
2		Propanenitrile, 3-(2-chlorobenzo...	237	C10H8ClN3O2	290313-51-8	53
3		4-Chlorobenzoic acid, 2-propenyl...	196	C10H9ClO2	015784-28-8	50
4		Cyclohexanone, 5-butyl-3,3,5-tri...	196	C13H24O	041601-84-7	49
5		2-(4-Chlorophenyl)-2-oxoethyl 2-...	308	C15H10Cl2O3	282730-75-0	40



Data Path : Z:\svoasrv\HPCHEM1\BNA_M\Data\BM082319\
 Data File : BM022301.D
 Acq On : 24 Aug 2019 19:29
 Operator : HP/JU
 Sample : K4373-12
 Misc :
 ALS Vial : 10 Sample Multiplier: 1

Instrument :
 BNA_M
 ClientSampled :
 C0AB4

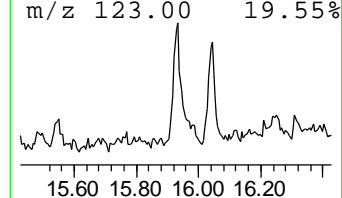
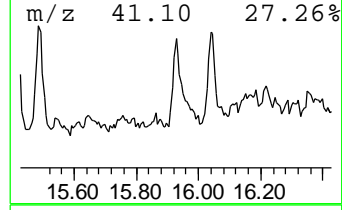
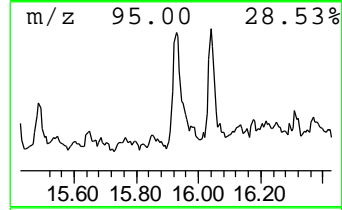
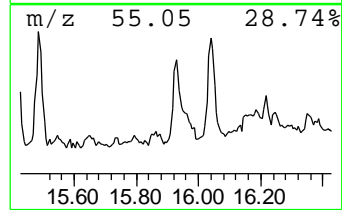
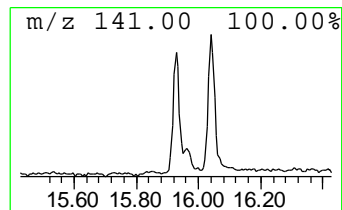
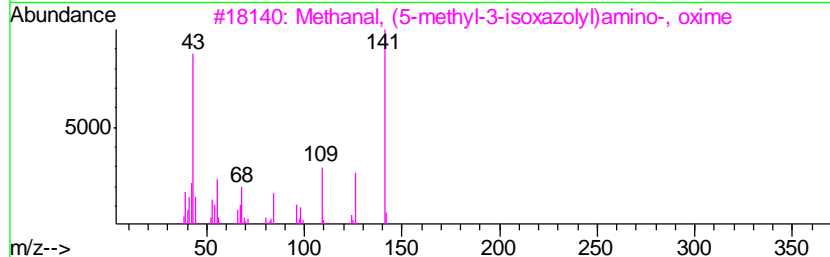
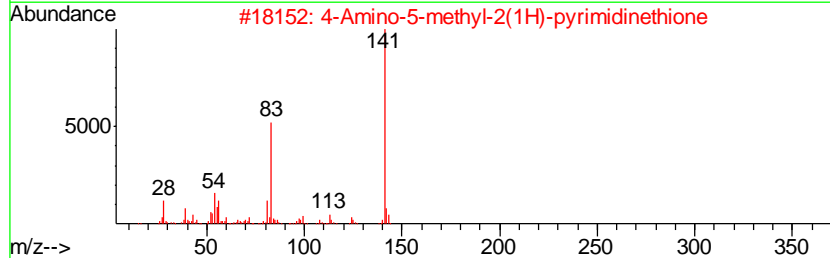
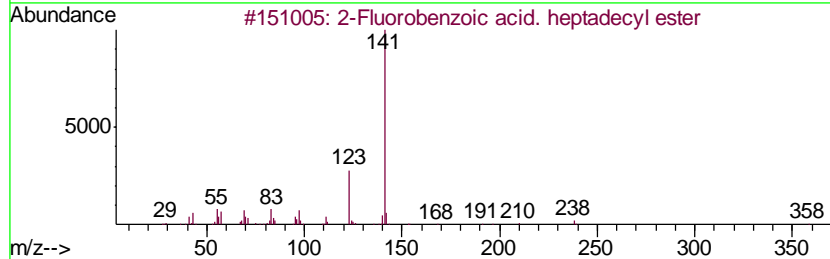
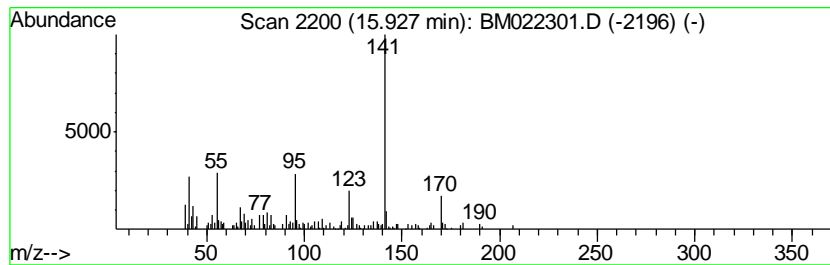
Quant Method : Z:\SVOASRV\HPCHEM1\BNA_M\METHODS\SOM-EPA-BM082219MA.M
 Quant Title : SVOA CALIBRATION

TIC Library : C:\DATABASE\NIST02.L
 TIC Integration Parameters: LSCINT.P

 Peak Number 25 2-Fluorobenzoic acid. hepta... Concentration Rank 22

R.T.	EstConc	Area	Relative to ISTD	R.T.
15.93	4.50 ng/ul	158513	Phenanthrene-d10	16.97

Hit#	of	Tentative ID	MW	MolForm	CAS#	Qual
1	5	2-Fluorobenzoic acid. heptadecyl...	378	C24H39FO2	1000282-96-6	50
2		4-Amino-5-methyl-2(1H)-pyrimidin...	141	C5H7N3S	007390-56-9	38
3		Methanal, (5-methyl-3-isoxazolyl...	141	C5H7N3O2	1000262-88-5	38
4		5-(Hydroxymethyl)-2-(dimethoxyme...	172	C8H12O4	090200-14-9	38
5		2-Methoxycarbonylmethylenethiour...	200	C7H8N2O3S	079361-42-5	38



Data Path : Z:\svoasrv\HPCHEM1\BNA_M\Data\BM082319\
 Data File : BM022301.D
 Acq On : 24 Aug 2019 19:29
 Operator : HP/JU
 Sample : K4373-12
 Misc :
 ALS Vial : 10 Sample Multiplier: 1

Instrument :
 BNA_M
 ClientSampled :
 C0AB4

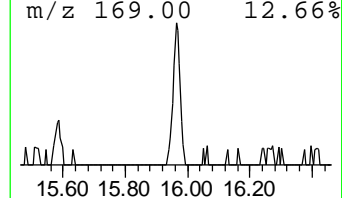
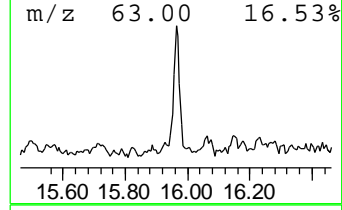
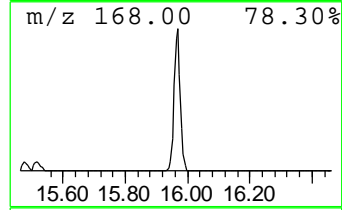
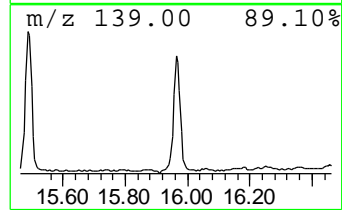
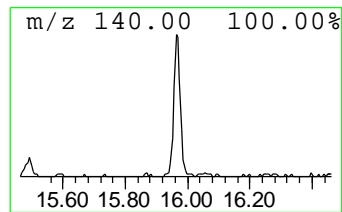
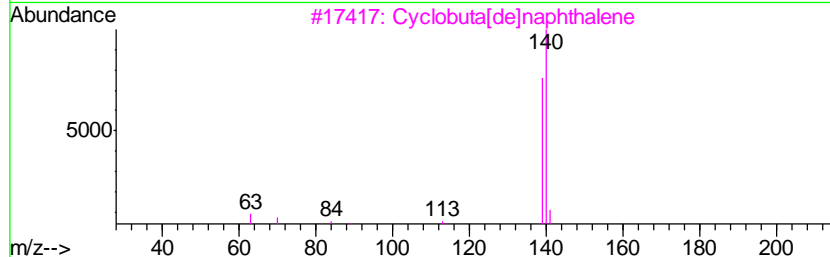
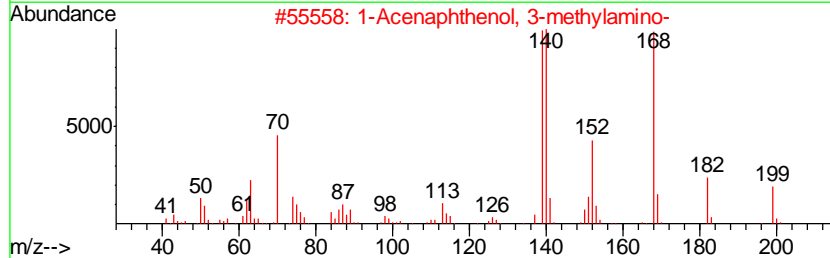
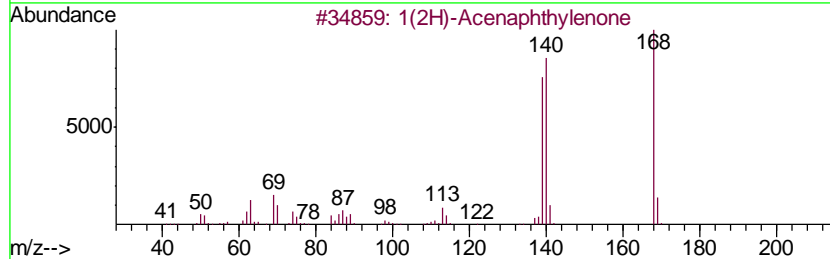
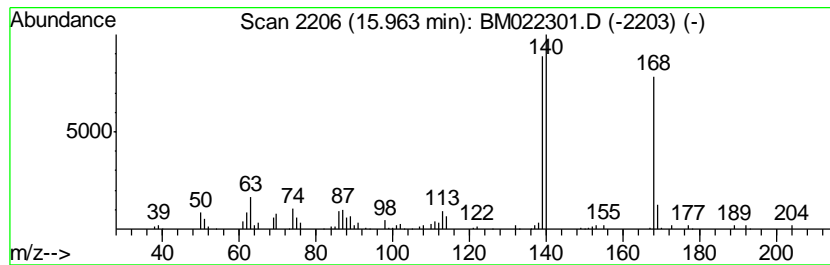
Quant Method : Z:\SVOASRV\HPCHEM1\BNA_M\METHODS\SOM-EPA-BM082219MA.M
 Quant Title : SVOA CALIBRATION

TIC Library : C:\DATABASE\NIST02.L
 TIC Integration Parameters: LSCINT.P

 Peak Number 26 1(2H)-Acenaphthylenone Concentration Rank 14

R.T.	EstConc	Area	Relative to ISTD	R.T.
15.96	6.05 ng/ul	213095	Phenanthrene-d10	16.97

Hit#	of	Tentative ID	MW	MolForm	CAS#	Qual
1	5	1(2H)-Acenaphthylenone	168	C12H8O	002235-15-6	91
2		1-Acenaphthenol, 3-methylamino-	199	C13H13NO	1000129-22-6	74
3		Cyclobuta[de]naphthalene	140	C11H8	024973-91-9	49
4		2-Thiaadamantan-4-one	168	C9H12OS	036223-95-7	43
5		Benzaldehyde, 2-fluoro-3-hydroxy-	140	C7H5FO2	103438-86-4	43



Data Path : Z:\svoasrv\HPCHEM1\BNA_M\Data\BM082319\
 Data File : BM022301.D
 Acq On : 24 Aug 2019 19:29
 Operator : HP/JU
 Sample : K4373-12
 Misc :
 ALS Vial : 10 Sample Multiplier: 1

Instrument :
 BNA_M
 ClientSampleID :
 C0AB4

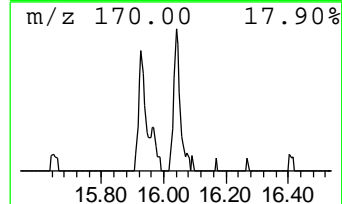
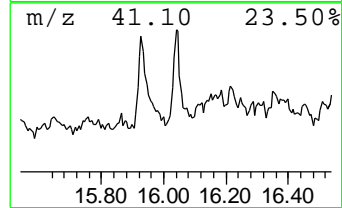
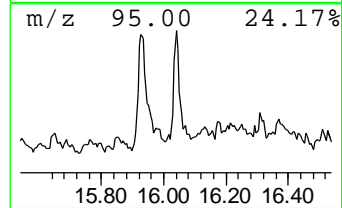
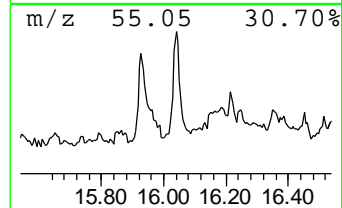
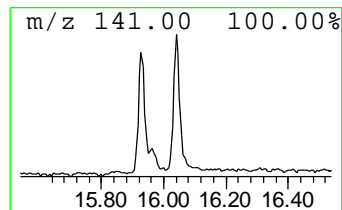
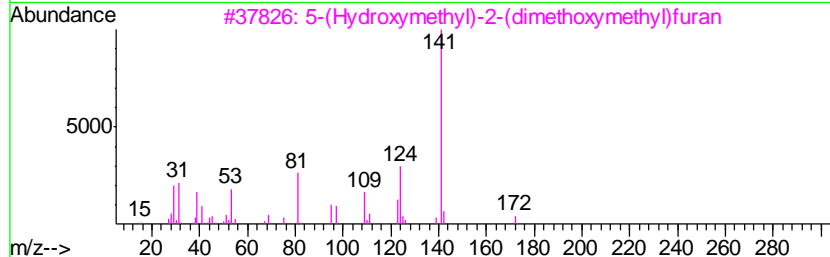
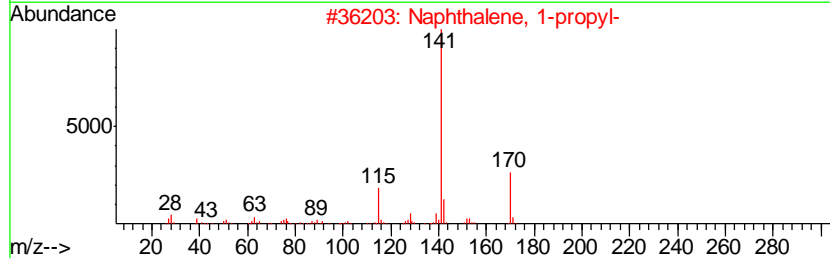
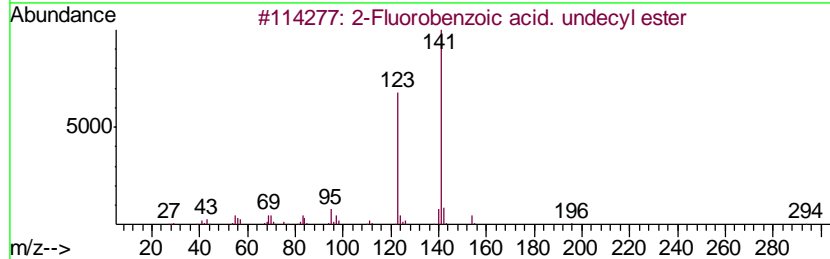
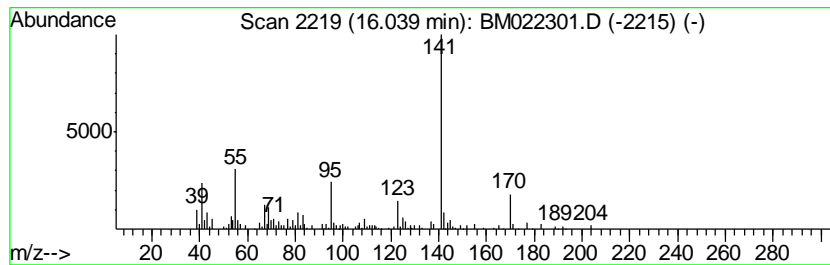
Quant Method : Z:\SVOASRV\HPCHEM1\BNA_M\METHODS\SOM-EPA-BM082219MA.M
 Quant Title : SVOA CALIBRATION

TIC Library : C:\DATABASE\NIST02.L
 TIC Integration Parameters: LSCINT.P

 Peak Number 27 unknown-18 Concentration Rank 16

R.T.	EstConc	Area	Relative to ISTD	R.T.
16.04	5.46 ng/ul	192267	Phenanthrene-d10	16.97

Hit#	of	Tentative ID	MW	MolForm	CAS#	Qual
1	5	2-Fluorobenzoic acid, undecyl ester	294	C18H27FO2	1000282-96-3	40
2		Naphthalene, 1-propyl-	170	C13H14	002765-18-6	40
3		5-(Hydroxymethyl)-2-(dimethoxyme...	172	C8H12O4	090200-14-9	38
4		2-Chloro-2',4'-difluoroacetophenone	190	C8H5ClF2O	051336-94-8	37
5		2,4-Difluorobenzoyl chloride	176	C7H3ClF2O	072482-64-5	37



Data Path : Z:\svoasrv\HPCHEM1\BNA_M\Data\BM082319\
 Data File : BM022301.D
 Acq On : 24 Aug 2019 19:29
 Operator : HP/JU
 Sample : K4373-12
 Misc :
 ALS Vial : 10 Sample Multiplier: 1

Instrument :
 BNA_M
 ClientSampled :
 C0AB4

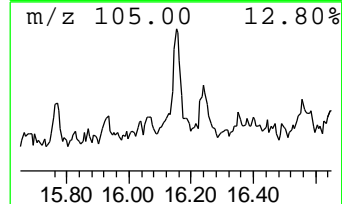
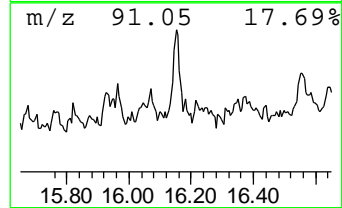
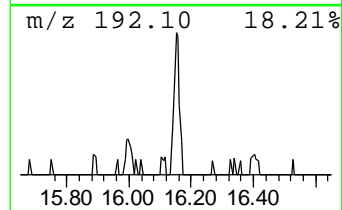
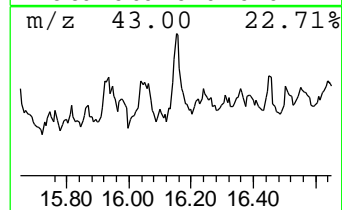
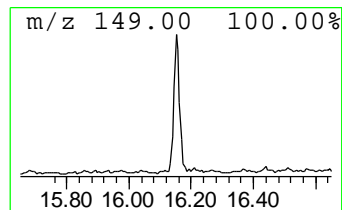
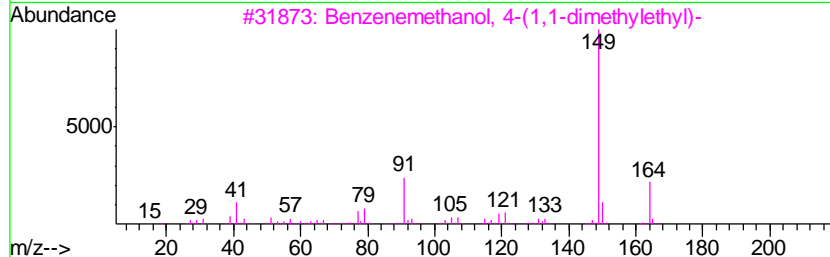
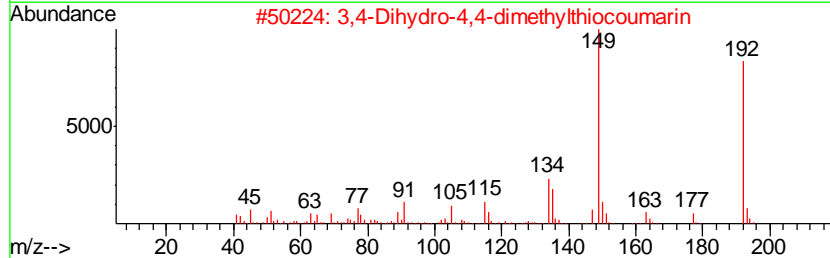
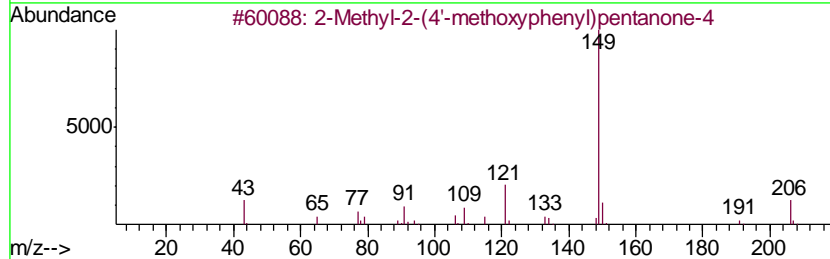
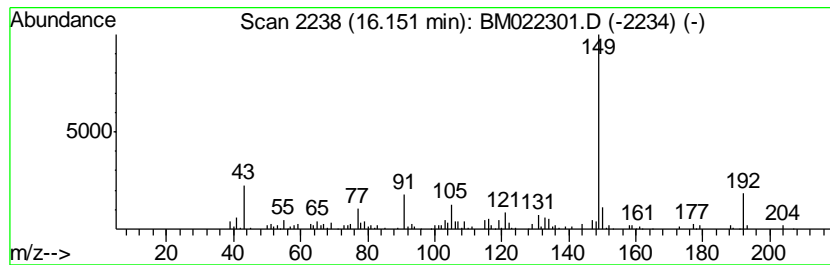
Quant Method : Z:\SVOASRV\HPCHEM1\BNA_M\METHODS\SOM-EPA-BM082219MA.M
 Quant Title : SVOA CALIBRATION

TIC Library : C:\DATABASE\NIST02.L
 TIC Integration Parameters: LSCINT.P

 Peak Number 28 2-Methyl-2-(4'-methoxypheny... Concentration Rank 28

R.T.	EstConc	Area	Relative to ISTD	R.T.
16.15	3.00 ng/ul	105805	Phenanthrene-d10	16.97

Hit#	of	Tentative ID	MW	MolForm	CAS#	Qual
1	5	2-Methyl-2-(4'-methoxyphenyl)pen...	206	C13H18O2	185700-49-6	64
2		3,4-Dihydro-4,4-dimethylthiocoum...	192	C11H12OS	091587-25-6	64
3		Benzenemethanol, 4-(1,1-dimethyl...	164	C11H16O	000877-65-6	59
4		1,2-Benzisothiazole-3-acetamide	192	C9H8N2OS	029273-65-2	59
5		Benzaldehyde, 3-(2,4-dichlorophe...	310	C15H12Cl2O3	1000273-78-9	53



Data Path : Z:\svoasrv\HPCHEM1\BNA_M\Data\BM082319\
 Data File : BM022301.D
 Acq On : 24 Aug 2019 19:29
 Operator : HP/JU
 Sample : K4373-12
 Misc :
 ALS Vial : 10 Sample Multiplier: 1

Instrument :
 BNA_M
 ClientSampleID :
 C0AB4

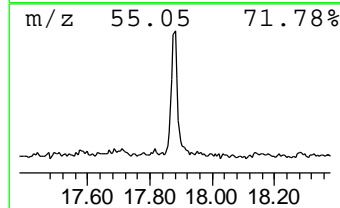
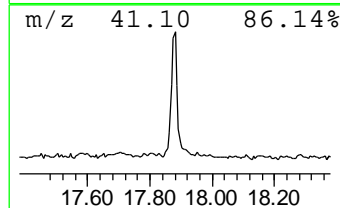
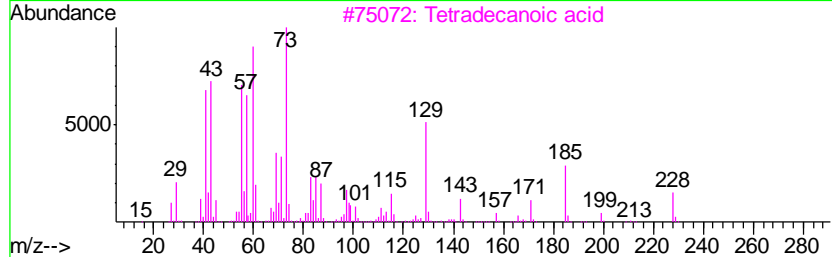
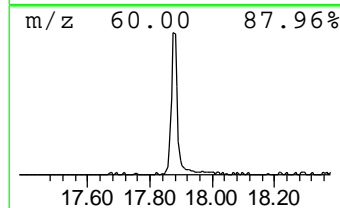
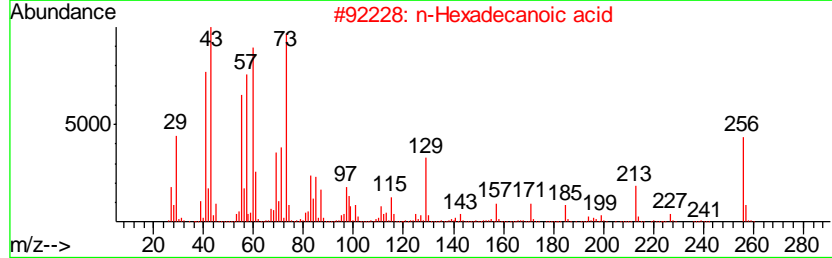
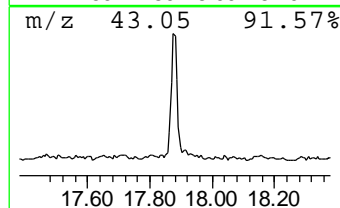
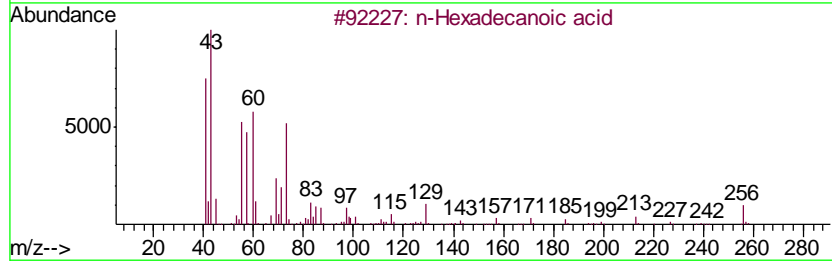
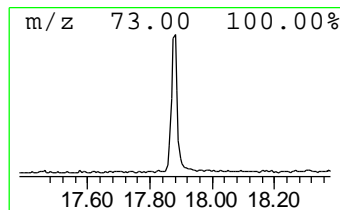
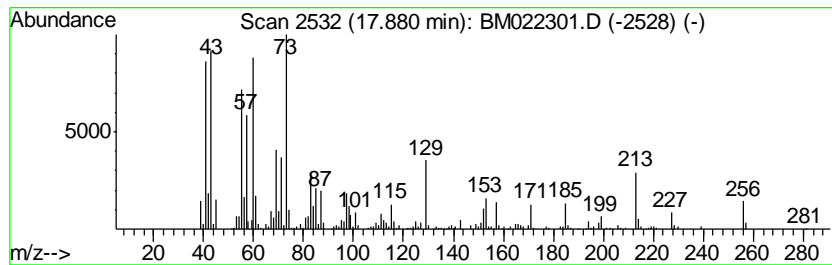
Quant Method : Z:\SVOASRV\HPCHEM1\BNA_M\METHODS\SOM-EPA-BM082219MA.M
 Quant Title : SVOA CALIBRATION

TIC Library : C:\DATABASE\NIST02.L
 TIC Integration Parameters: LSCINT.P

 Peak Number 29 n-Hexadecanoic acid Concentration Rank 4

R.T.	EstConc	Area	Relative to ISTD	R.T.
17.88	13.00 ng/ul	457948	Phenanthrene-d10	16.97

Hit#	of	Tentative ID	MW	MolForm	CAS#	Qual
1	5	n-Hexadecanoic acid	256	C16H32O2	000057-10-3	98
2		n-Hexadecanoic acid	256	C16H32O2	000057-10-3	96
3		Tetradecanoic acid	228	C14H28O2	000544-63-8	93
4		Tridecanoic acid	214	C13H26O2	000638-53-9	90
5		Tridecanoic acid	214	C13H26O2	000638-53-9	90



Data Path : Z:\svoasrv\HPCHEM1\BNA_M\Data\BM082319\
 Data File : BM022301.D
 Acq On : 24 Aug 2019 19:29
 Operator : HP/JU
 Sample : K4373-12
 Misc :
 ALS Vial : 10 Sample Multiplier: 1

Instrument :
 BNA_M
 ClientSampled :
 C0AB4

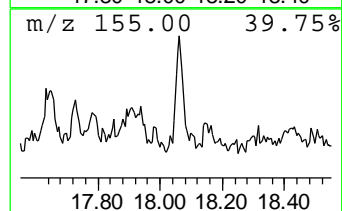
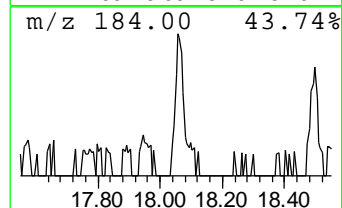
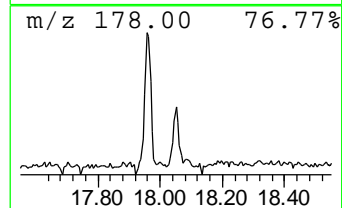
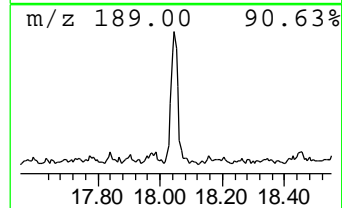
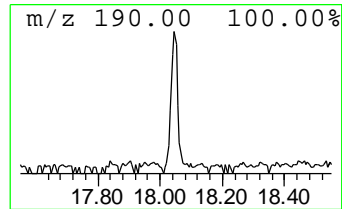
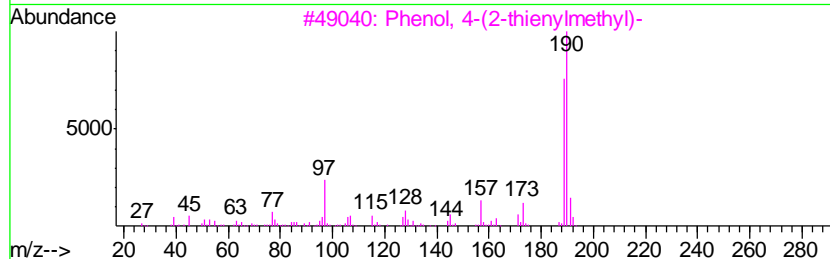
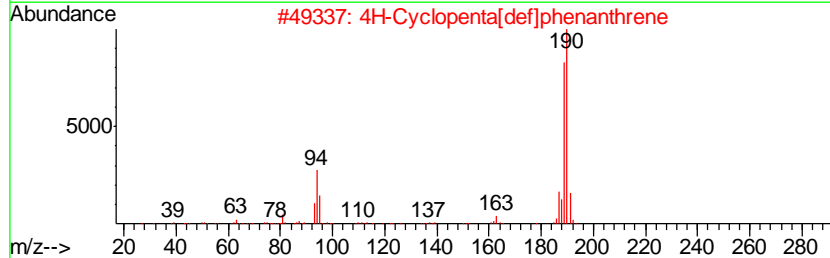
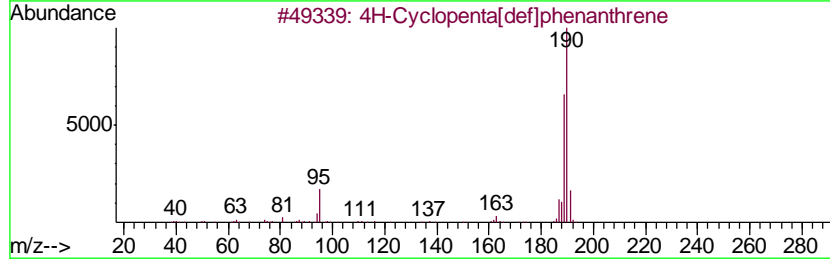
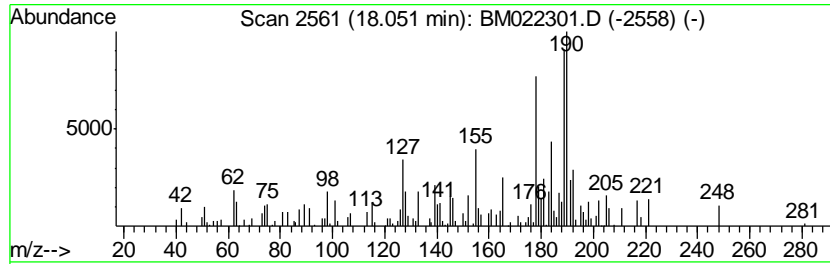
Quant Method : Z:\SVOASRV\HPCHEM1\BNA_M\METHODS\SOM-EPA-BM082219MA.M
 Quant Title : SVOA CALIBRATION

TIC Library : C:\DATABASE\NIST02.L
 TIC Integration Parameters: LSCINT.P

 Peak Number 30 unknown-19 Concentration Rank 32

R.T.	EstConc	Area	Relative to ISTD	R.T.
18.05	2.78 ng/ul	97849	Phenanthrene-d10	16.97

Hit#	of	Tentative ID	MW	MolForm	CAS#	Qual
1	5	4H-Cyclopenta[def]phenanthrene	190	C15H10	000203-64-5	30
2		4H-Cyclopenta[def]phenanthrene	190	C15H10	000203-64-5	30
3		Phenol, 4-(2-thienylmethyl)-	190	C11H10OS	091680-55-6	30
4		2-Chloro-1-(2-propynyl)-1H-benzi...	190	C10H7ClN2	080276-19-3	30
5		Pyrazole-4-carboxaldehyde, 3-(4-...	190	C10H7FN2O	306936-57-2	27



Data Path : Z:\svoasrv\HPCHEM1\BNA_M\Data\BM082319\
 Data File : BM022301.D
 Acq On : 24 Aug 2019 19:29
 Operator : HP/JU
 Sample : K4373-12
 Misc :
 ALS Vial : 10 Sample Multiplier: 1

Instrument :
 BNA_M
 ClientSampled :
 C0AB4

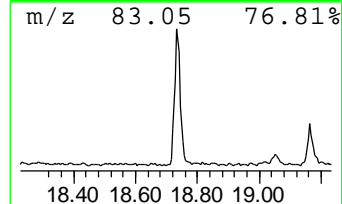
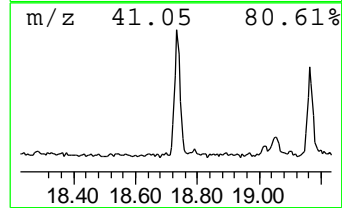
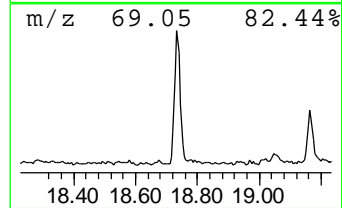
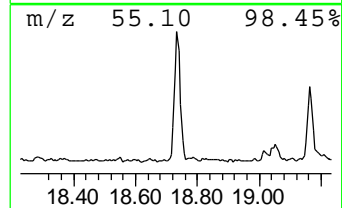
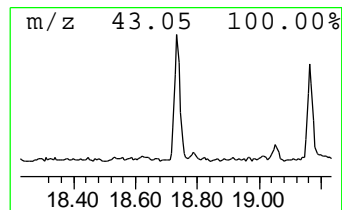
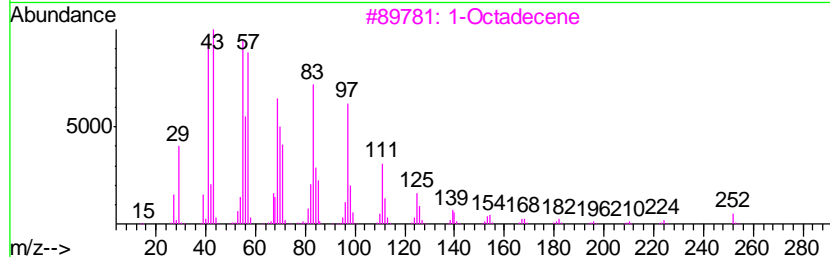
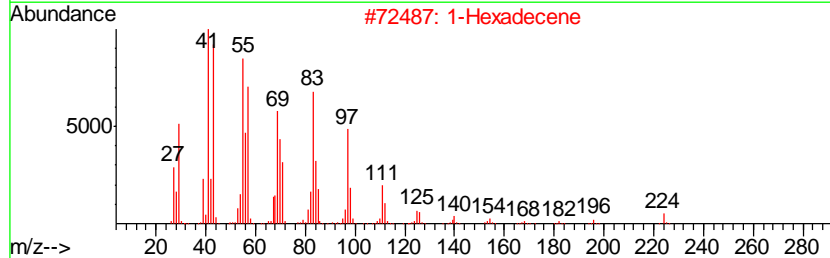
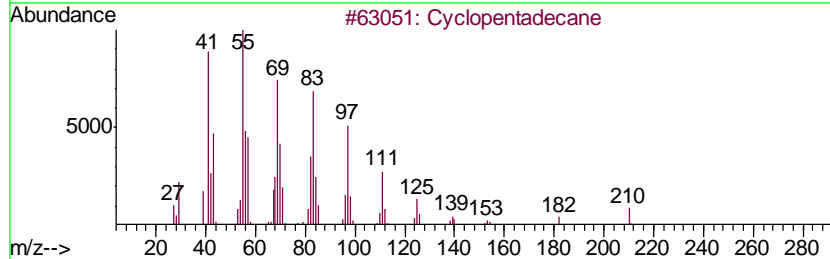
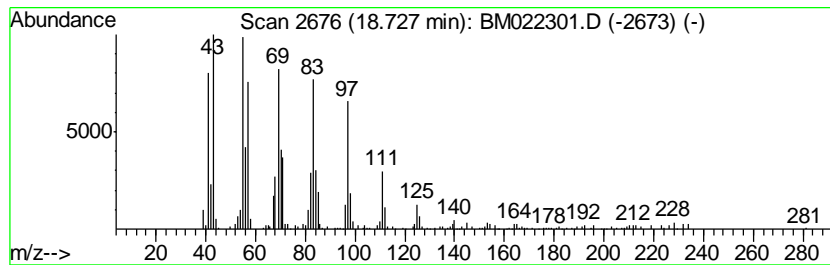
Quant Method : Z:\SVOASRV\HPCHEM1\BNA_M\METHODS\SOM-EPA-BM082219MA.M
 Quant Title : SVOA CALIBRATION

TIC Library : C:\DATABASE\NIST02.L
 TIC Integration Parameters: LSCINT.P

 Peak Number 31 (DEL) Alkane: Cyclic18.73 Concentration Rank 7

R.T.	EstConc	Area	Relative to ISTD	R.T.
18.73	9.83 ng/ul	346180	Phenanthrene-d10	16.97

Hit#	of	Tentative ID	MW	MolForm	CAS#	Qual
1	5	Cyclopentadecane	210	C15H30	000295-48-7	94
2		1-Hexadecene	224	C16H32	000629-73-2	94
3		1-Octadecene	252	C18H36	000112-88-9	93
4		E-15-Heptadecenal	252	C17H32O	1000130-97-9	93
5		1-Octadecanol	270	C18H38O	000112-92-5	91



Data Path : Z:\svoasrv\HPCHEM1\BNA_M\Data\BM082319\
 Data File : BM022301.D
 Acq On : 24 Aug 2019 19:29
 Operator : HP/JU
 Sample : K4373-12
 Misc :
 ALS Vial : 10 Sample Multiplier: 1

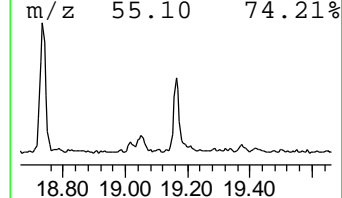
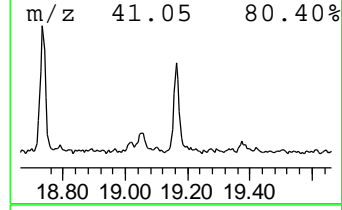
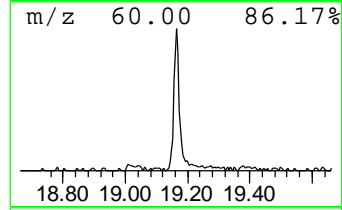
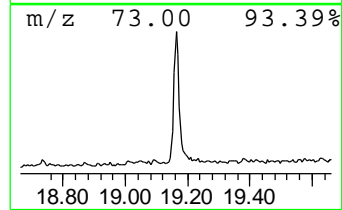
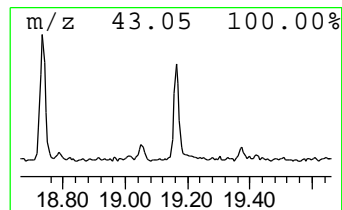
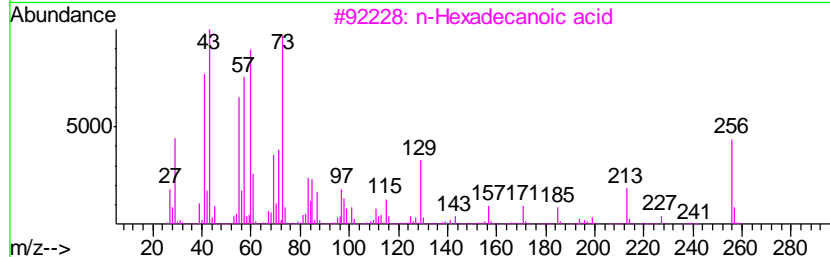
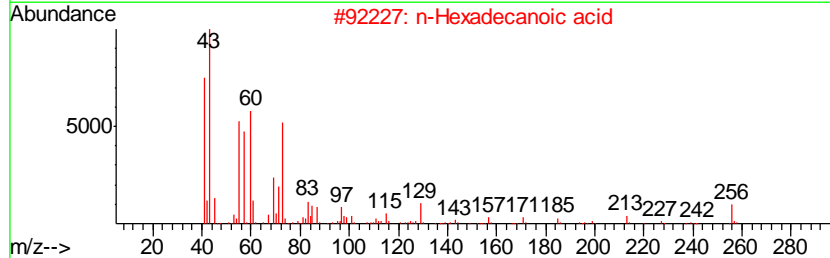
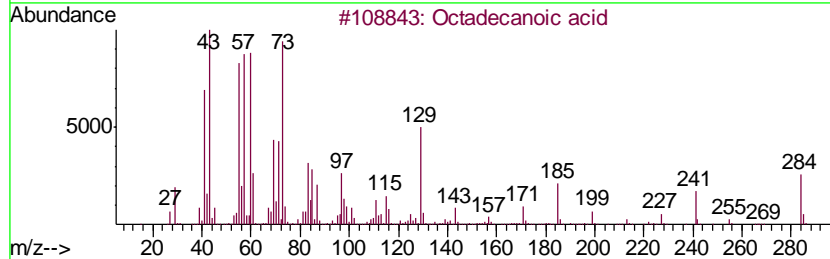
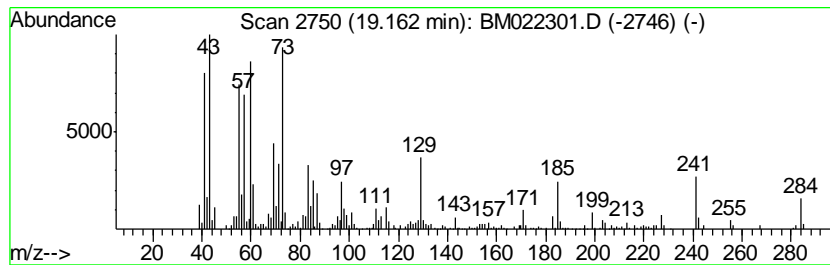
Instrument :
 BNA_M
 ClientSampleId :
 C0AB4

Quant Method : Z:\SVOASRV\HPCHEM1\BNA_M\METHODS\SOM-EPA-BM082219MA.M
 Quant Title : SVOA CALIBRATION

TIC Library : C:\DATABASE\NIST02.L
 TIC Integration Parameters: LSCINT.P

 Peak Number 32 Octadecanoic acid Concentration Rank 11

R.T.	EstConc	Area	Relative to ISTD	R.T.
19.16	6.44 ng/ul	303721	Chrysene-d12	21.19
Hit# of	5	Tentative ID	MW MolForm	CAS# Qual
1		Octadecanoic acid	284 C18H36O2	000057-11-4 99
2		n-Hexadecanoic acid	256 C16H32O2	000057-10-3 93
3		n-Hexadecanoic acid	256 C16H32O2	000057-10-3 86
4		Pentadecanoic acid	242 C15H30O2	001002-84-2 76
5		Tetradecanoic acid	228 C14H28O2	000544-63-8 74



Data Path : Z:\svoasrv\HPCHEM1\BNA_M\Data\BM082319\
 Data File : BM022301.D
 Acq On : 24 Aug 2019 19:29
 Operator : HP/JU
 Sample : K4373-12
 Misc :
 ALS Vial : 10 Sample Multiplier: 1

Instrument :
 BNA_M
 ClientSampled :
 C0AB4

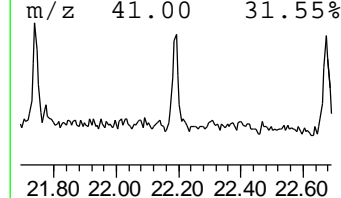
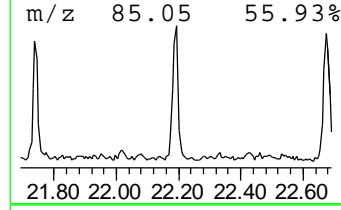
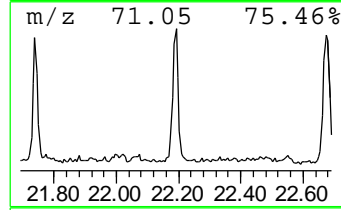
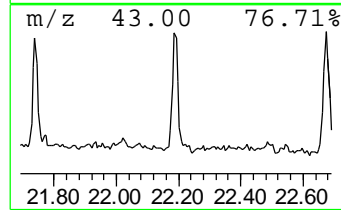
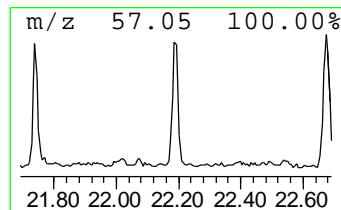
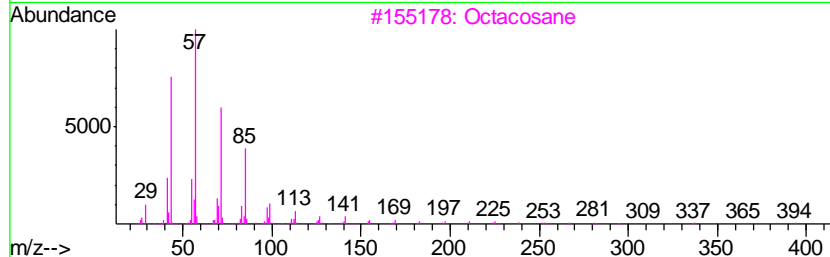
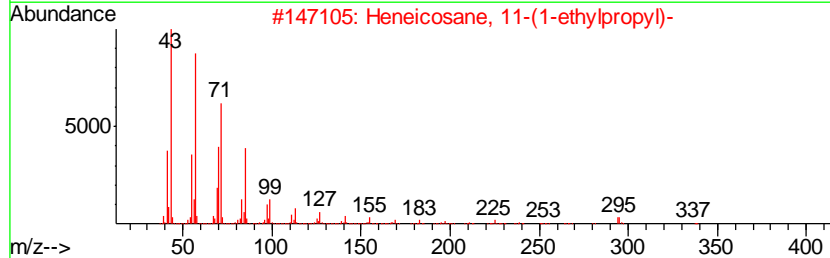
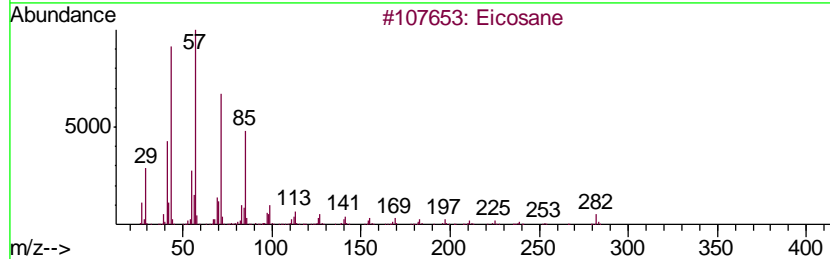
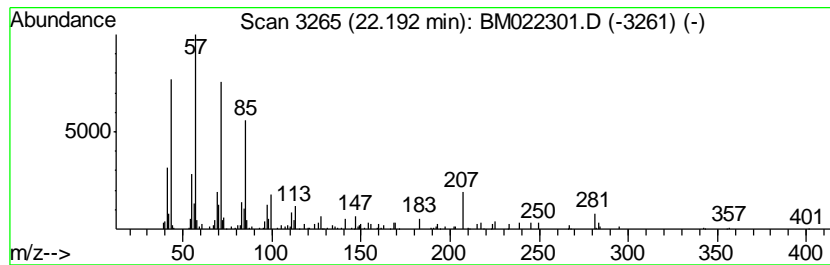
Quant Method : Z:\SVOASRV\HPCHEM1\BNA_M\METHODS\SOM-EPA-BM082219MA.M
 Quant Title : SVOA CALIBRATION

TIC Library : C:\DATABASE\NIST02.L
 TIC Integration Parameters: LSCINT.P

 Peak Number 35 (DEL) Alkane: Straight-Chai... Concentration Rank 36

R.T.	EstConc	Area	Relative to ISTD	R.T.
22.19	2.10 ng/ul	99112	Chrysene-d12	21.19

Hit#	of	Tentative ID	MW	MolForm	CAS#	Qual
1	5	Eicosane	282	C20H42	000112-95-8	93
2		Heneicosane, 11-(1-ethylpropyl)-	366	C26H54	055282-11-6	87
3		Octacosane	394	C28H58	000630-02-4	87
4		Eicosane	282	C20H42	000112-95-8	87
5		Heptacosane	380	C27H56	000593-49-7	87



Data Path : Z:\svoasrv\HPCHEM1\BNA_M\Data\BM082319\
 Data File : BM022301.D
 Acq On : 24 Aug 2019 19:29
 Operator : HP/JU
 Sample : K4373-12
 Misc :
 ALS Vial : 10 Sample Multiplier: 1

Instrument :
 BNA_M
 ClientSampled :
 C0AB4

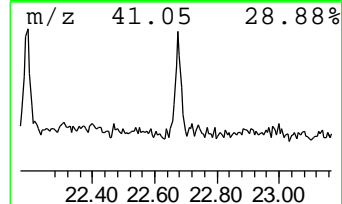
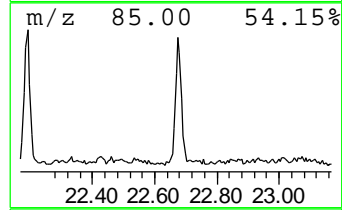
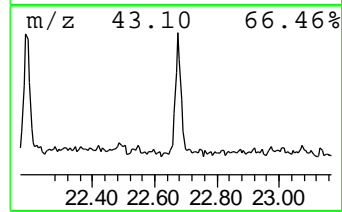
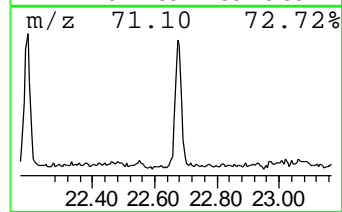
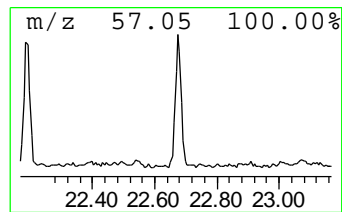
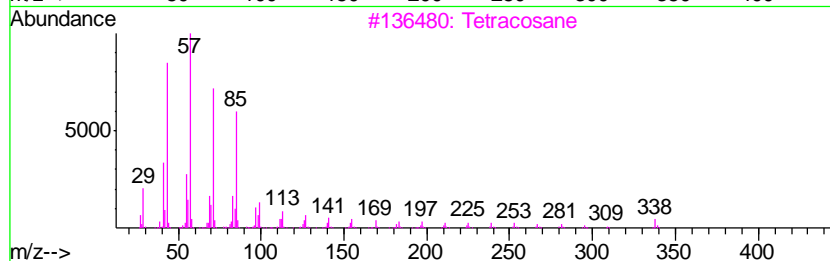
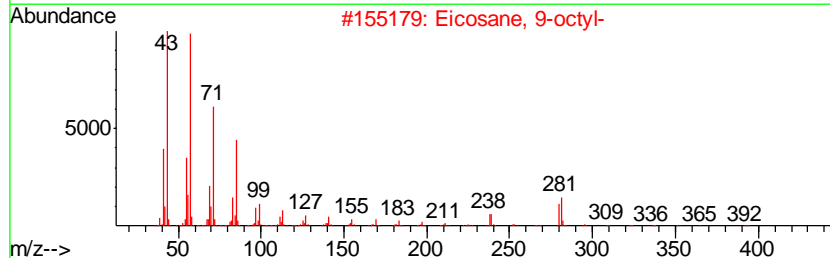
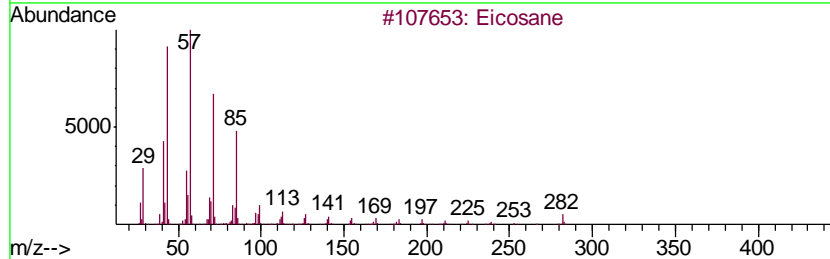
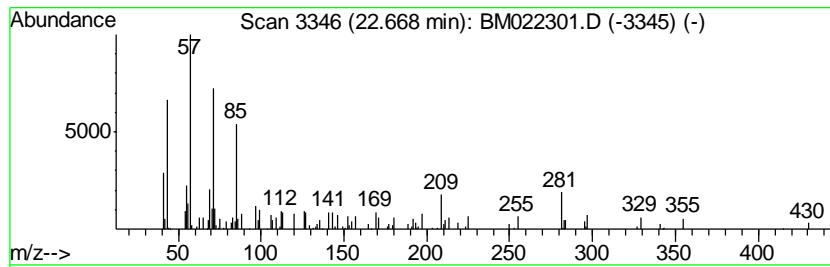
Quant Method : Z:\SVOASRV\HPCHEM1\BNA_M\METHODS\SOM-EPA-BM082219MA.M
 Quant Title : SVOA CALIBRATION

TIC Library : C:\DATABASE\NIST02.L
 TIC Integration Parameters: LSCINT.P

 Peak Number 36 (DEL) Alkane: Straight-Chai... Concentration Rank 34

R.T.	EstConc	Area	Relative to ISTD	R.T.
22.67	2.21 ng/ul	77296	Perylene-d12	23.38

Hit#	of	Tentative ID	MW	MolForm	CAS#	Qual
1	5	Eicosane	282	C20H42	000112-95-8	83
2		Eicosane, 9-octyl-	394	C28H58	013475-77-9	68
3		Tetracosane	338	C24H50	000646-31-1	62
4		Heneicosane, 11-decyl-	437	C31H64	055320-06-4	58
5		Octacosane	394	C28H58	000630-02-4	58



Data Path : Z:\svoasrv\HPCHEM1\BNA_M\Data\BM082319\
 Data File : BM022301.D
 Acq On : 24 Aug 2019 19:29
 Operator : HP/JU
 Sample : K4373-12
 Misc :
 ALS Vial : 10 Sample Multiplier: 1

Instrument :
 BNA_M
 ClientSampleId :
 C0AB4

Quant Method : Z:\SVOASRV\HPCHEM1\BNA_M\METHODS\SOM-EPA-BM082219MA.M
 Quant Title : SVOA CALIBRATION

TIC Library : C:\DATABASE\NIST02.L
 TIC Integration Parameters: LSCINT.P

TIC Top Hit name	RT	EstConc	Units	Response	--Internal Standard--			
					#	RT	Resp	Conc
Hexanoic acid, 1-...	11.63	5.1	ng/ul	101832	2	10.33	398938	20.0
unknown-01	11.87	10.1	ng/ul	201031	2	10.33	398938	20.0
unknown-02	12.00	3.2	ng/ul	64635	2	10.33	398938	20.0
unknown-03	12.16	19.9	ng/ul	396033	2	10.33	398938	20.0
unknown-04	12.36	14.8	ng/ul	409677	3	14.21	552314	20.0
3-Aminopyrazine 1...	12.43	4.8	ng/ul	131143	3	14.21	552314	20.0
unknown-05	12.70	6.1	ng/ul	167732	3	14.21	552314	20.0
unknown-06	12.75	2.9	ng/ul	79023	3	14.21	552314	20.0
unknown-07	12.82	3.3	ng/ul	90153	3	14.21	552314	20.0
Bicyclo[4.1.0]hep...	12.92	2.8	ng/ul	77458	3	14.21	552314	20.0
unknown-08	12.97	2.3	ng/ul	64408	3	14.21	552314	20.0
(DEL) Alkane: Cyc...	13.02	3.6	ng/ul	98663	3	14.21	552314	20.0
unknown-09	13.08	6.1	ng/ul	168288	3	14.21	552314	20.0
2,6-Pyridinediamine	13.25	31.1	ng/ul	859825	3	14.21	552314	20.0
2,3-Pyridinediamine	13.39	9.1	ng/ul	251549	3	14.21	552314	20.0
unknown-10	13.56	7.4	ng/ul	204262	3	14.21	552314	20.0
unknown-11	13.82	2.1	ng/ul	58925	3	14.21	552314	20.0
unknown-12	14.02	11.2	ng/ul	309351	3	14.21	552314	20.0
unknown-13	14.15	5.6	ng/ul	153533	3	14.21	552314	20.0
unknown-14	14.42	5.4	ng/ul	148301	3	14.21	552314	20.0
unknown-15	14.77	5.0	ng/ul	139527	3	14.21	552314	20.0
unknown-16	14.98	2.8	ng/ul	78078	3	14.21	552314	20.0
unknown-17	15.10	4.4	ng/ul	122284	3	14.21	552314	20.0
Boron, diethyl(2,...	15.49	7.7	ng/ul	212793	3	14.21	552314	20.0
2-Fluorobenzoic a...	15.93	4.5	ng/ul	158513	4	16.97	704690	20.0
1(2H)-Acenaphthyl...	15.96	6.0	ng/ul	213095	4	16.97	704690	20.0
unknown-18	16.04	5.5	ng/ul	192267	4	16.97	704690	20.0
2-Methyl-2-(4'-me...	16.15	3.0	ng/ul	105805	4	16.97	704690	20.0
n-Hexadecanoic acid	17.88	13.0	ng/ul	457948	4	16.97	704690	20.0
unknown-19	18.05	2.8	ng/ul	97849	4	16.97	704690	20.0
(DEL) Alkane: Cyc...	18.73	9.8	ng/ul	346180	4	16.97	704690	20.0
Octadecanoic acid	19.16	6.4	ng/ul	303721	5	21.19	943644	20.0
(DEL) Alkane: Str...	22.19	2.1	ng/ul	99112	5	21.19	943644	20.0
(DEL) Alkane: Str...	22.67	2.2	ng/ul	77296	6	23.38	700787	20.0