

Data Path : Z:\SVOASRV\HPCHEM1\BNA M\DATA\BM082619\
 Data File : BM022341.D
 Acq On : 26 Aug 2019 21:23
 Operator : HP/JU
 Sample : K4357-02MS
 Misc :
 ALS Vial : 19 Sample Multiplier: 1

Instrument :
 BNA_M
 ClientSampleId :

Quant Time: Aug 27 11:58:17 2019
 Quant Method : Z:\SVOASRV\HPCHEM1\BNA_M\METHODS\SOM-EPA-BM082219MA.M
 Quant Title : SVOA CALIBRATION
 QLast Update : Tue Aug 27 11:54:35 2019
 Response via : Initial Calibration

Internal Standards	R.T.	QIon	Response	Conc	Units	Dev(Min)
1) 1,4-Dichlorobenzene-d4	7.55	152	37913	20.00	ng/ul	0.00
18) Naphthalene-d8	10.32	136	171434	20.00	ng/ul	-0.01
35) Acenaphthene-d10	14.20	164	120854	20.00	ng/ul	0.00
61) Phenanthrene-d10	16.97	188	268769	20.00	ng/ul	0.00
77) Chrysene-d12	21.18	240	231627	20.00	ng/ul	0.00
85) Perylene-d12	23.37	264	220408	20.00	ng/ul	0.00

System Monitoring Compounds

3) 1,4-Dioxane-d8	3.13	96	4483	5.29	ng/uL	0.00
5) Phenol-d5	6.75	99	100868	30.83	ng/ul	0.00
7) Bis-(2-Chloroethyl)ether-d	6.90	67	64724	34.01	ng/ul	0.00
9) 2-Chlorophenol-d4	7.09	132	89907	34.03	ng/ul	0.00
13) 4-Methylphenol-d8	8.27	113	82798	29.20	ng/ul	0.00
19) Nitrobenzene-d5	8.72	128	47369	37.06	ng/ul	0.00
22) 2-Nitrophenol-d4	9.43	143	56681	38.10	ng/ul	0.00
26) 2,4-Dichlorophenol-d3	9.96	165	107541	35.51	ng/ul	0.00
29) 4-Chloroaniline-d4	10.49	131	104503	28.37	ng/ul	0.00
43) Dimethylphthalate-d6	13.63	166	380245	35.73	ng/ul	0.00
46) Acenaphthylene-d8	13.90	160	418308	36.49	ng/ul	0.00
51) 4-Nitrophenol-d4	14.47	143	36300	23.02	ng/ul	0.00
57) Fluorene-d10	15.21	176	324195	36.73	ng/ul	0.00
62) 4,6-Dinitro-2-methylphenol	15.37	200	42788	20.63	ng/ul	0.00
70) Anthracene-d10	17.07	188	528151	37.11	ng/ul	0.00
78) Pyrene-d10	19.38	212	637607	52.97	ng/ul	0.00
89) Benzo(a)pyrene-d12	23.23	264	470857	38.89	ng/ul	0.00

Target Compounds

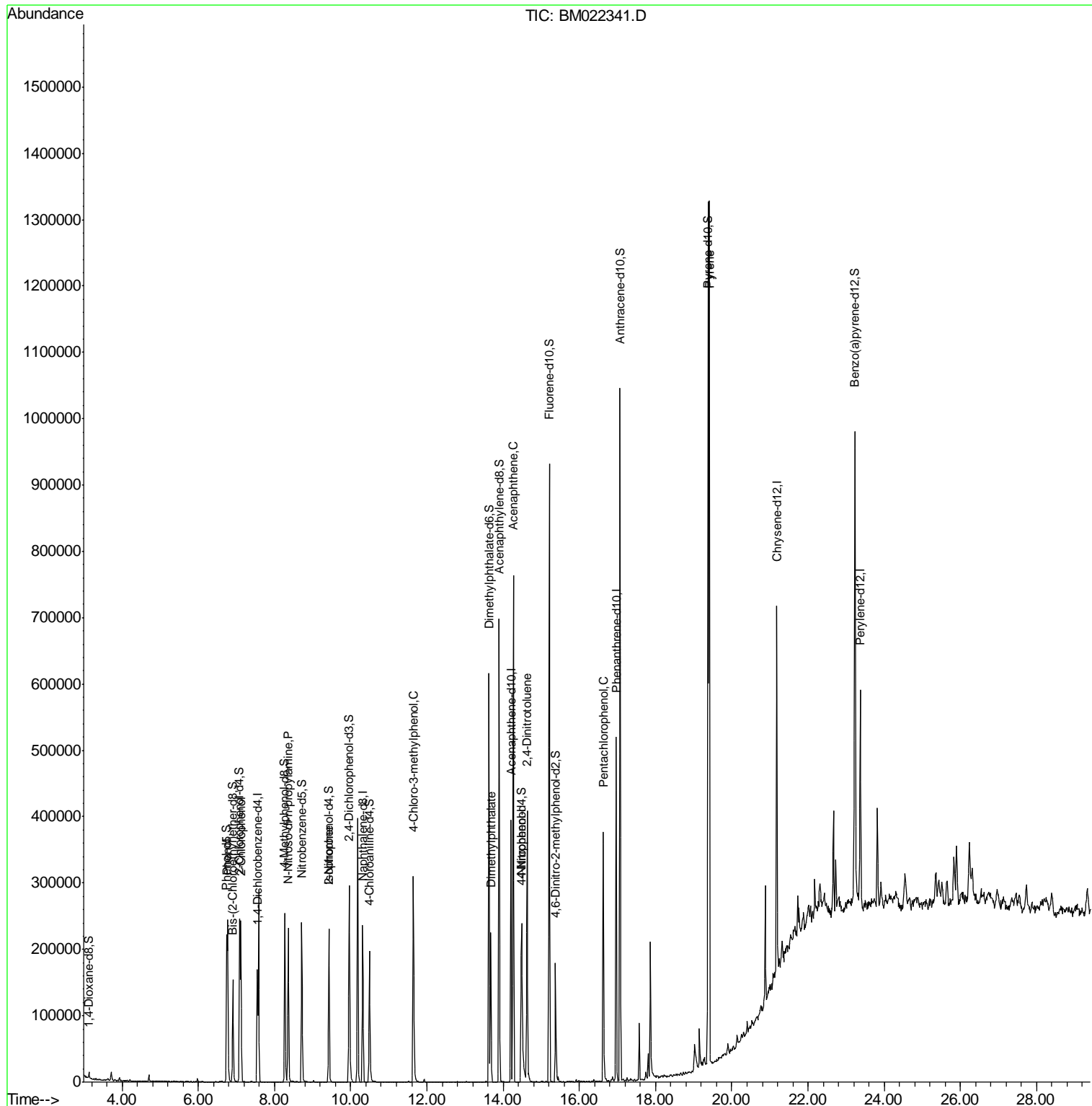
Target Compounds	R.T.	QIon	Response	Conc	Units	Ovalue
6) Phenol	6.77	94	104266	29.759	ng/ul	96
10) 2-Chlorophenol	7.12	128	84645	30.865	ng/ul	99
15) N-Nitroso-di-n-propylamine	8.36	70	78367	31.579	ng/ul	96
21) Isophorone	9.43	82	7429	1.083	ng/ul#	72
33) 4-Chloro-3-methylphenol	11.65	107	109122	32.211	ng/ul	95
44) Dimethylphthalate	13.68	163	136679	12.621	ng/ul	99
49) Acenaphthene	14.27	153	277748	32.910	ng/ul	99
52) 4-Nitrophenol	14.49	109	59910	22.866	ng/ul	98
54) 2,4-Dinitrotoluene	14.63	165	100817	31.363	ng/ul	84
68) Pentachlorophenol	16.63	266	68374	26.404	ng/ul	98
79) Pyrene	19.41	202	715678	47.736	ng/ul#	95

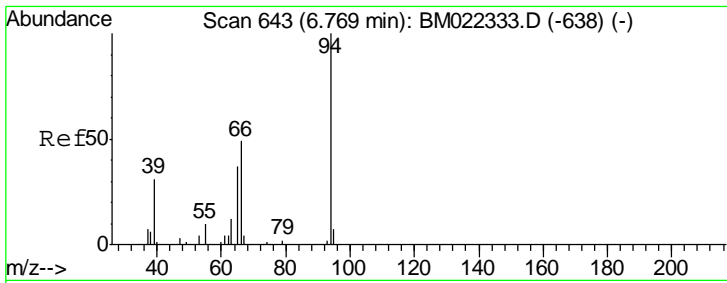
(#) = qualifier out of range (m) = manual integration (+) = signals summed

Data Path : Z:\SVOASRV\HPCHEM1\BNA M\DATA\BM082619\
 Data File : BM022341.D
 Acq On : 26 Aug 2019 21:23
 Operator : HP/JU
 Sample : K4357-02MS
 Misc :
 ALS Vial : 19 Sample Multiplier: 1

Instrument :
 BNA_M
 ClientSampled :

Quant Time: Aug 27 11:58:17 2019
 Quant Method : Z:\SVOASRV\HPCHEM1\BNA_M\METHODS\SOM-EPA-BM082219MA.M
 Quant Title : SVOA CALIBRATION
 QLast Update : Tue Aug 27 11:54:35 2019
 Response via : Initial Calibration

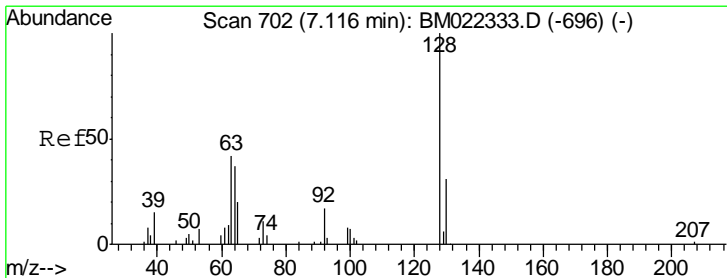
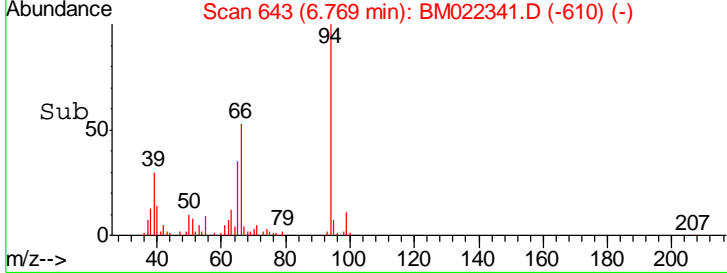
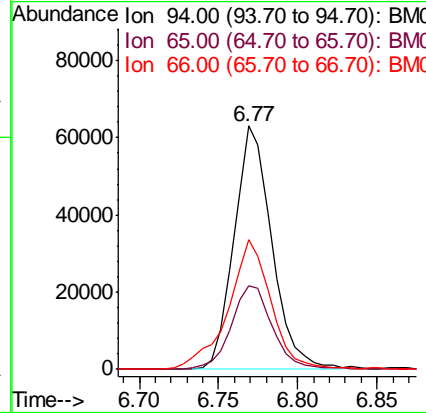
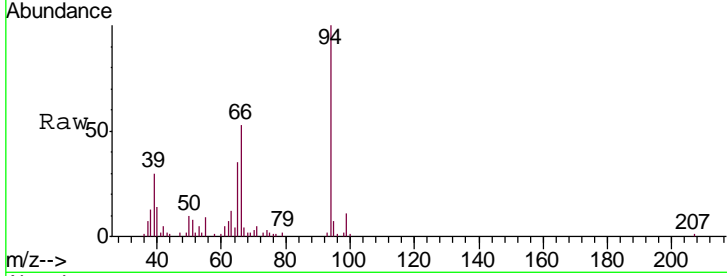




#6
 Phenol
 Concen: 29.759 ng/ul
 RT: 6.77 min Scan# 643
 Delta R.T. -0.01 min
 Lab File: BM022341.D
 Acq: 26 Aug 2019 21:23

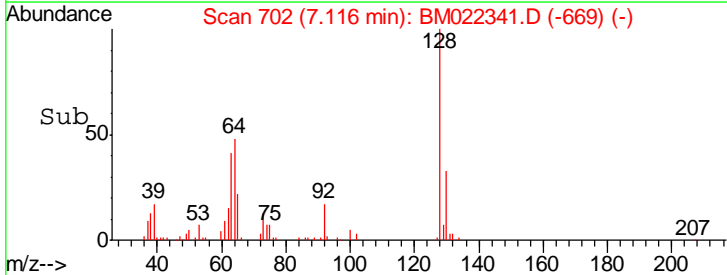
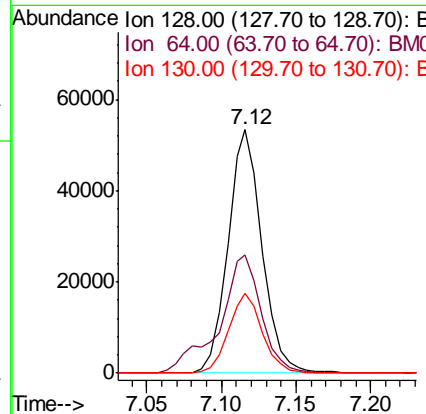
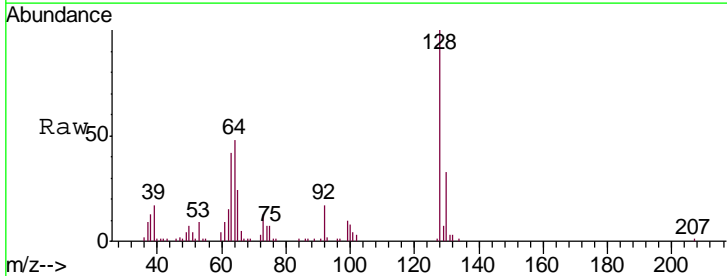
Instrument :
 BNA_M
 ClientSampled :

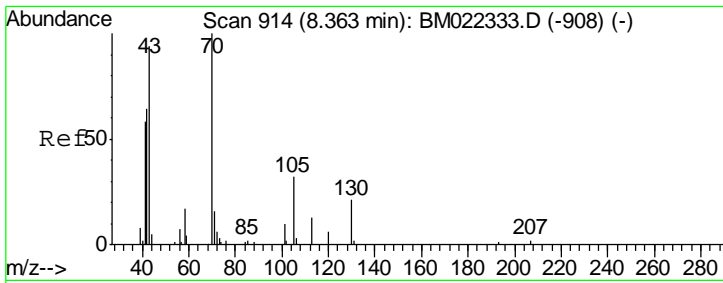
Tgt Ion	Resp	Lower	Upper
94	104266		
65	34.5	29.2	43.8
66	53.4	40.6	60.8



#10
 2-Chlorophenol
 Concen: 30.865 ng/ul
 RT: 7.12 min Scan# 702
 Delta R.T. -0.01 min
 Lab File: BM022341.D
 Acq: 26 Aug 2019 21:23

Tgt Ion	Resp	Lower	Upper
128	84645		
64	48.3	38.6	57.8
130	32.7	27.0	40.6

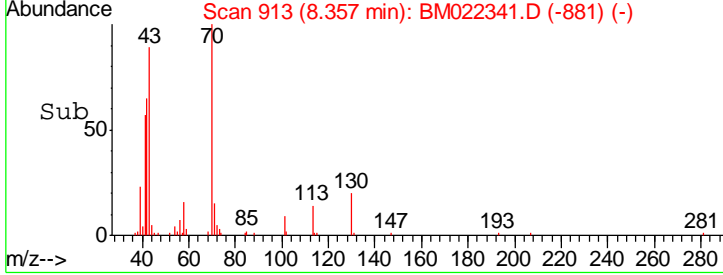
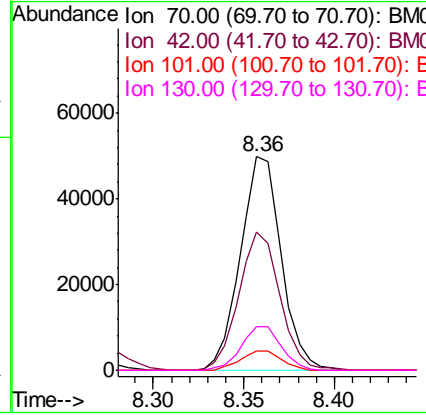
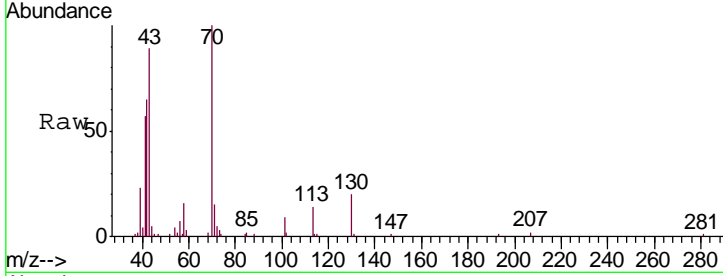




#15
 N-Nitroso-di-n-propylamine
 Concen: 31.579 ng/ul
 RT: 8.36 min Scan# 913
 Delta R.T. -0.01 min
 Lab File: BM022341.D
 Acq: 26 Aug 2019 21:23

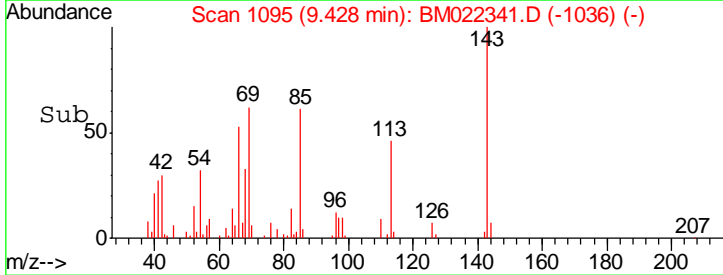
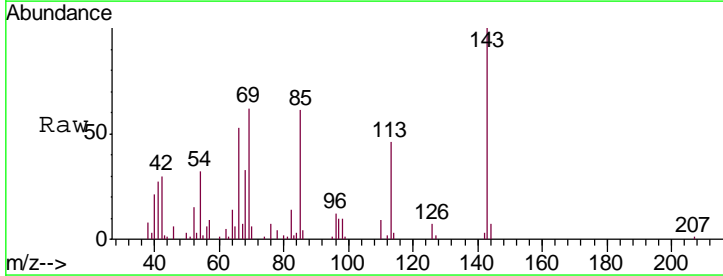
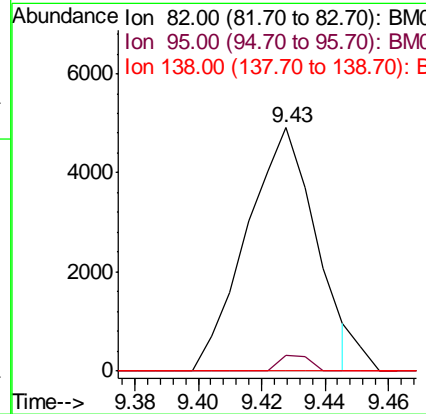
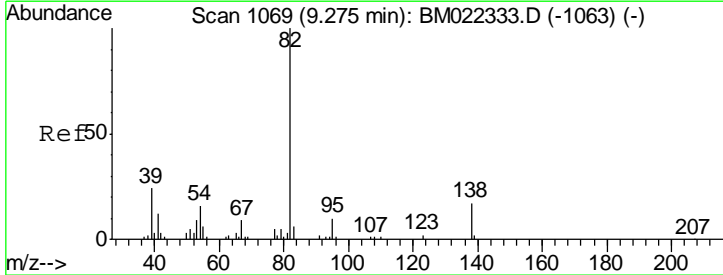
Instrument :
 BNA_M
ClientSampled :

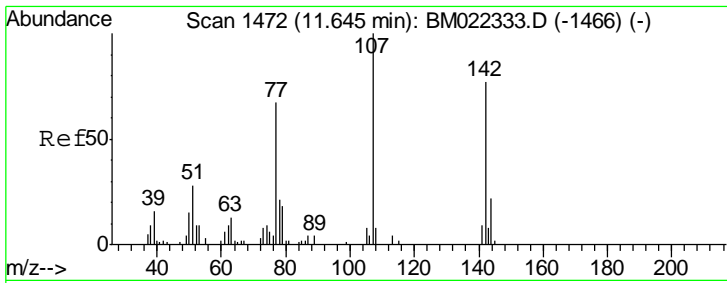
Tgt Ion	Resp	Lower	Upper
70	100		
42	64.7	55.1	82.7
101	8.8	8.0	12.0
130	20.2	15.7	23.5



#21
 Isophorone
 Concen: 1.083 ng/ul
 RT: 9.43 min Scan# 1095
 Delta R.T. 0.15 min
 Lab File: BM022341.D
 Acq: 26 Aug 2019 21:23

Tgt Ion	Resp	Lower	Upper
82	100		
95	6.4	7.2	10.8#
138	0.0	13.8	20.6#



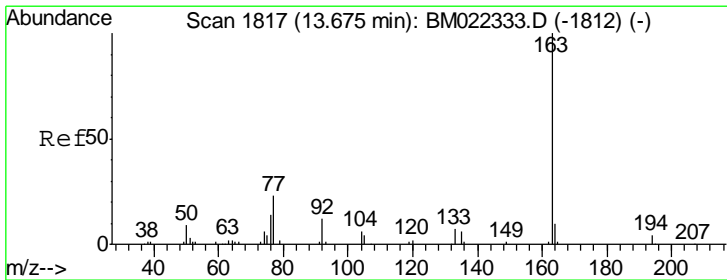
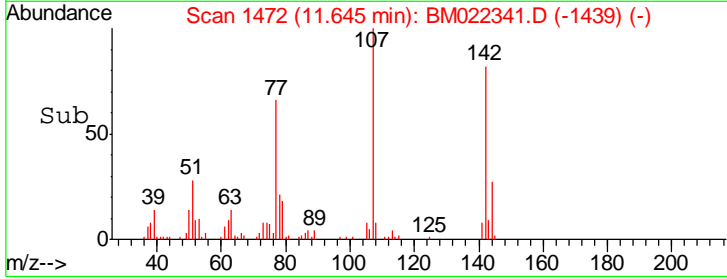
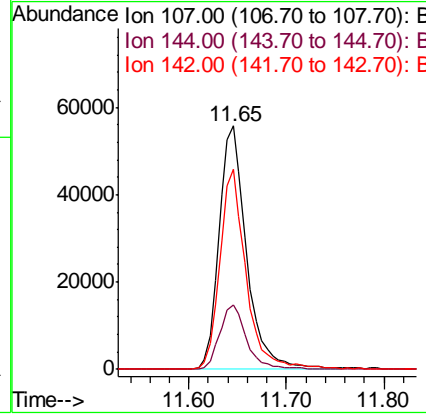
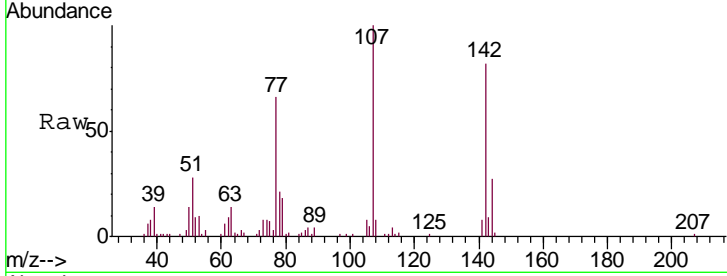


#33
 4-Chloro-3-methylphenol
 Concen: 32.211 ng/ul
 RT: 11.65 min Scan# 1472
 Delta R.T. -0.01 min
 Lab File: BM022341.D
 Acq: 26 Aug 2019 21:23

Instrument :
 BNA_M
 ClientSampled :

Tgt Ion:107 Resp: 109122

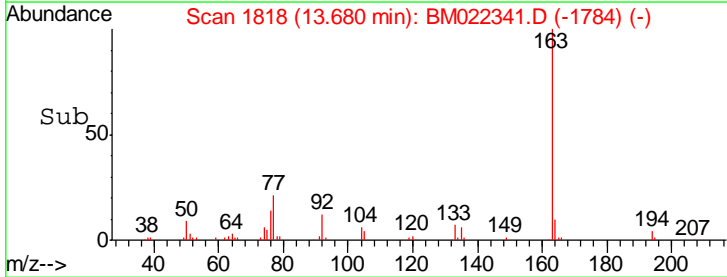
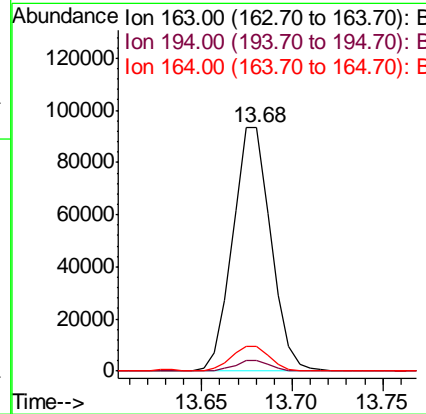
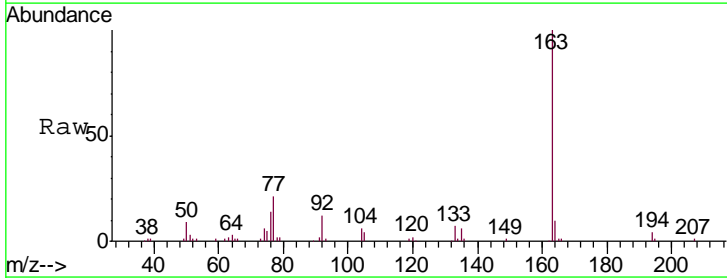
Ion	Ratio	Lower	Upper
107	100		
144	26.6	19.8	29.8
142	82.1	61.5	92.3

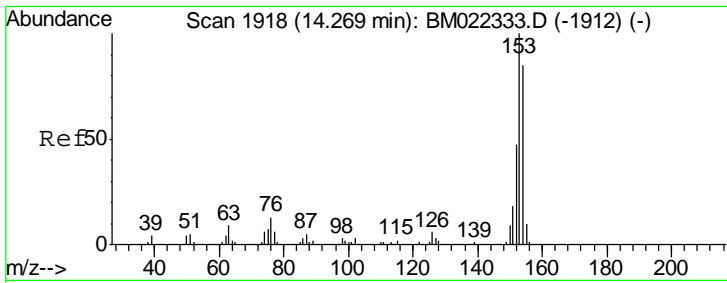


#44
 Dimethylphthalate
 Concen: 12.621 ng/ul
 RT: 13.68 min Scan# 1818
 Delta R.T. 0.00 min
 Lab File: BM022341.D
 Acq: 26 Aug 2019 21:23

Tgt Ion:163 Resp: 136679

Ion	Ratio	Lower	Upper
163	100		
194	4.4	3.0	4.6
164	10.0	7.8	11.8

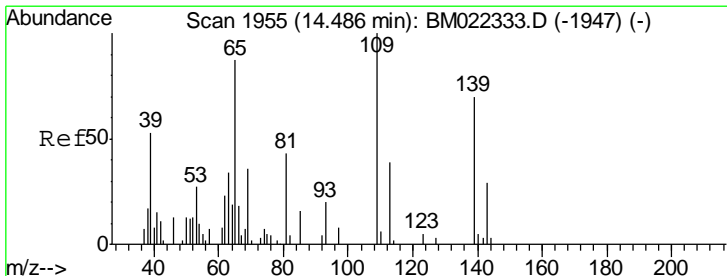
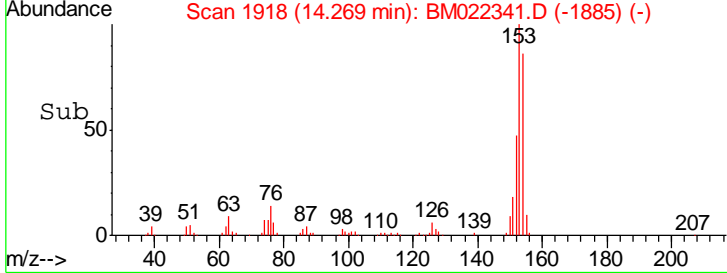
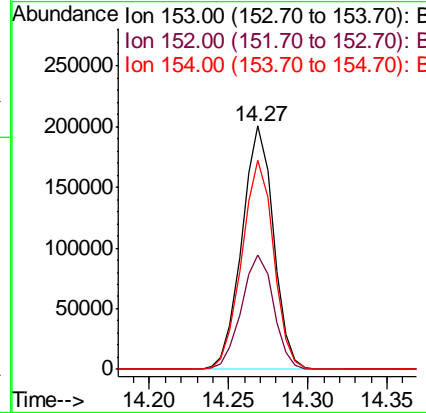
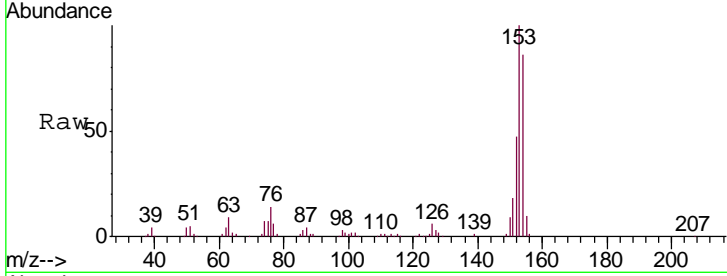




#49
 Acenaphthene
 Concen: 32.910 ng/ul
 RT: 14.27 min Scan# 1918
 Delta R.T. -0.01 min
 Lab File: BM022341.D
 Acq: 26 Aug 2019 21:23

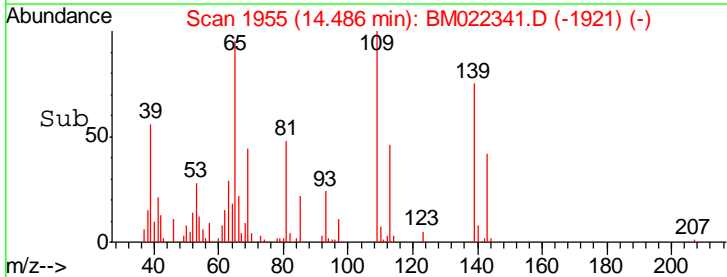
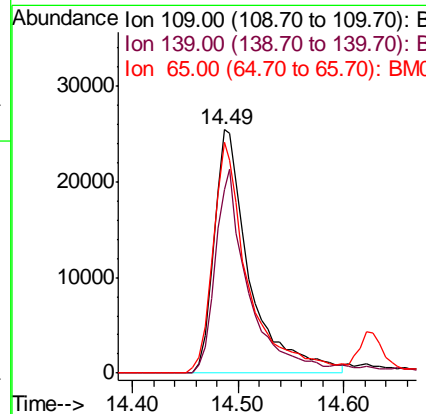
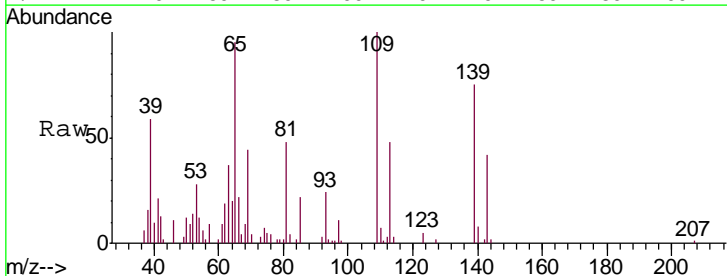
Instrument :
 BNA_M
 ClientSampled :

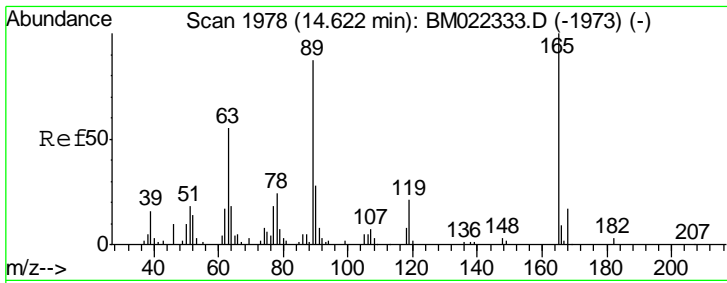
Tgt Ion	Resp	Lower	Upper
153	277748		
152	47.2	38.6	58.0
154	85.7	68.9	103.3



#52
 4-Nitrophenol
 Concen: 22.866 ng/ul
 RT: 14.49 min Scan# 1955
 Delta R.T. 0.00 min
 Lab File: BM022341.D
 Acq: 26 Aug 2019 21:23

Tgt Ion	Resp	Lower	Upper
109	59910		
139	75.1	61.0	91.4
65	94.8	73.4	110.2

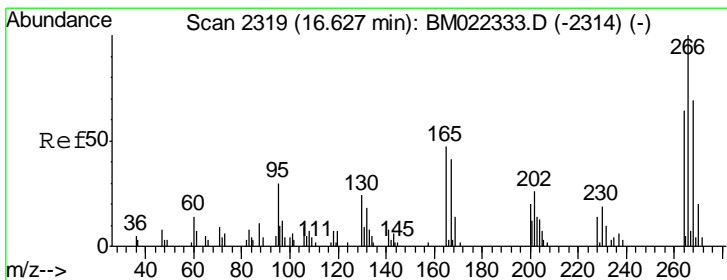
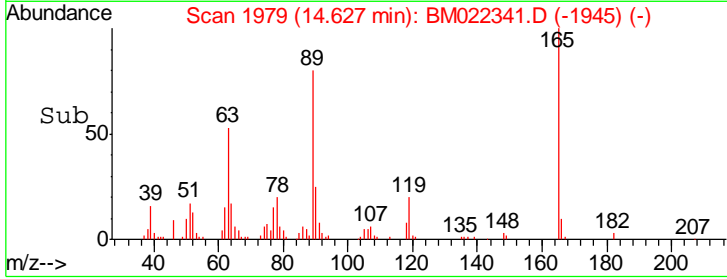
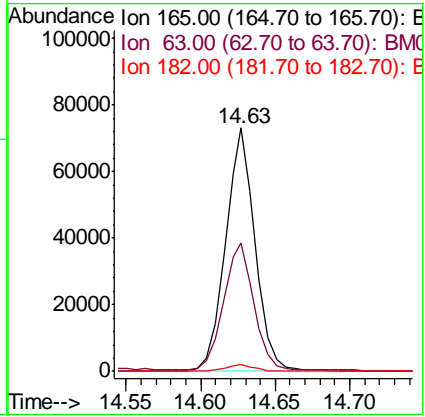
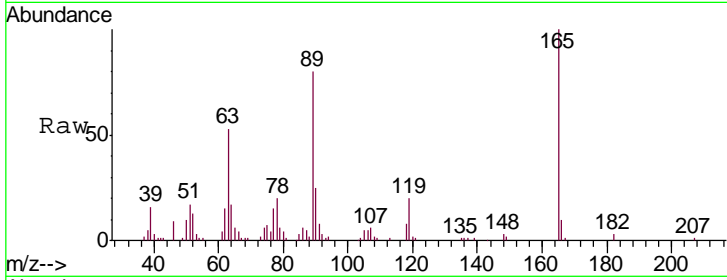




#54
 2,4-Dinitrotoluene
 Concen: 31.363 ng/ul
 RT: 14.63 min Scan# 1979
 Delta R.T. 0.00 min
 Lab File: BM022341.D
 Acq: 26 Aug 2019 21:23

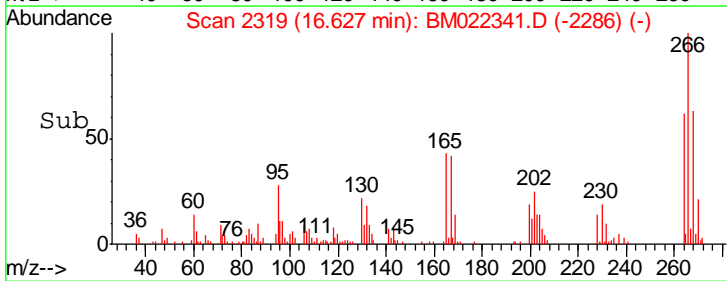
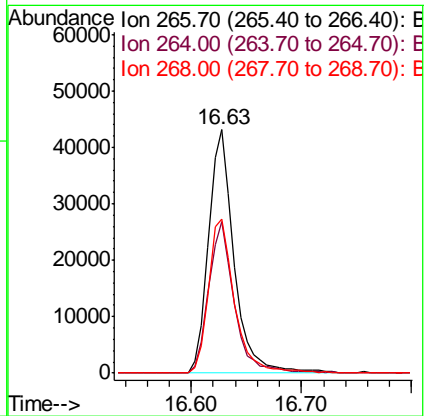
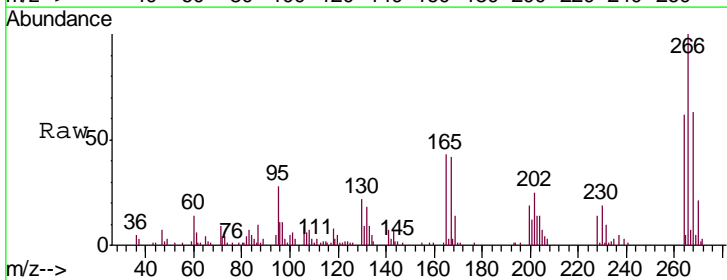
Instrument :
 BNA_M
 ClientSampled :

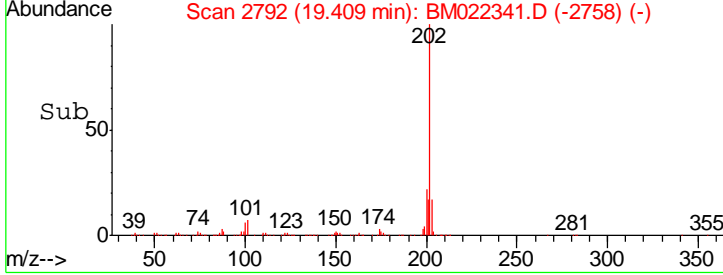
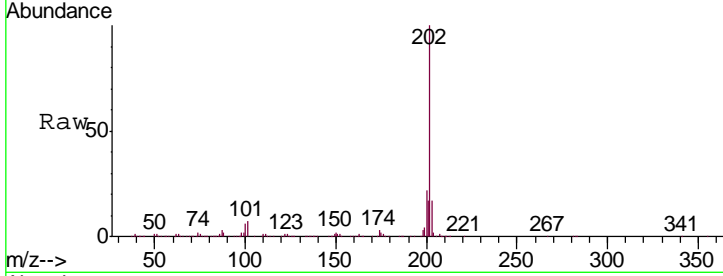
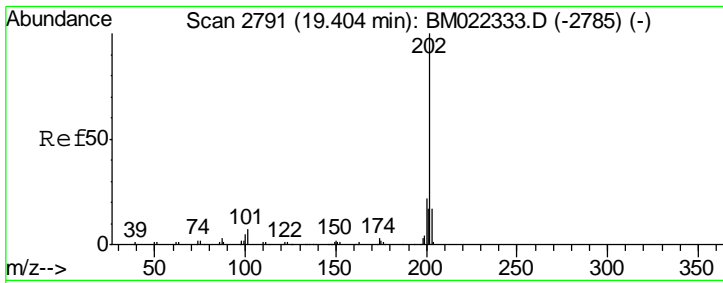
Tgt Ion	Resp	Lower	Upper
165	100		
63	52.6	52.4	78.6
182	2.7	2.2	3.4



#68
 Pentachlorophenol
 Concen: 26.404 ng/ul
 RT: 16.63 min Scan# 2319
 Delta R.T. -0.01 min
 Lab File: BM022341.D
 Acq: 26 Aug 2019 21:23

Tgt Ion	Resp	Lower	Upper
266	100		
264	62.4	51.3	76.9
268	63.4	49.4	74.2





#79
 Pyrene
 Concen: 47.736 ng/ul
 RT: 19.41 min Scan# 2792
 Delta R.T. 0.00 min
 Lab File: BM022341.D
 Acq: 26 Aug 2019 21:23

Instrument :
 BNA_M
 ClientSampled :

Tot Ion	Ratio	Lower	Upper
202	100		
101	6.6	7.0	10.4#
100	5.8	5.8	8.8#

