

Data Path : Z:\svoasrv\HPCHEM1\BNA_M\Data\BM082821\
 Data File : BM031935.D
 Acq On : 28 Aug 2021 16:53
 Operator : CG/JU
 Sample : SSTD02020
 Misc :
 ALS Vial : 4 Sample Multiplier: 1

Instrument :
 BNA_M
 ClientSampleId :
 SSTD020017

Quant Time: Aug 28 23:55:31 2021
 Quant Method : Z:\SVOASRV\HPCHEM1\BNA_M\METHODS\SFAM-EPA-BM082821.M
 Quant Title : SVOA CALIBRATION
 QLast Update : Sat Aug 28 23:51:00 2021
 Response via : Initial Calibration

Compound	R.T.	QIon	Response	Conc	Units	Dev(Min)
Internal Standards						
1) 1,4-Dichlorobenzene-d4	7.510	152	80602	20.000	ng/ul	0.00
20) Naphthalene-d8	10.269	136	352124	20.000	ng/ul	# 0.00
38) Acenaphthene-d10	14.151	164	268790	20.000	ng/ul	0.00
64) Phenanthrene-d10	16.904	188	610850	20.000	ng/ul	# 0.00
79) Chrysene-d12	21.109	240	702641	20.000	ng/ul	0.00
88) Perylene-d12	23.250	264	764172	20.000	ng/ul	0.00
System Monitoring Compounds						
3) 1,4-Dioxane-d8	3.134	96	14722	7.137	ng/uL	0.00
4) Pyridine-d5	3.522	84	100509	18.633	ng/ul	0.00
7) Phenol-d5	6.704	99	130659	18.552	ng/ul	0.00
9) Bis-(2-Chloroethyl)eth...	6.869	67	78916	17.396	ng/ul	0.00
11) 2-Chlorophenol-d4	7.051	132	109109	20.192	ng/ul	0.00
15) 4-Methylphenol-d8	8.222	113	114289	20.249	ng/ul	0.00
21) Nitrobenzene-d5	8.663	128	56411	21.539	ng/ul	0.00
24) 2-Nitrophenol-d4	9.369	143	66048	23.049	ng/ul	0.00
28) 2,4-Dichlorophenol-d3	9.904	165	131251	23.801	ng/ul	0.00
31) 4-Chloroaniline-d4	10.422	131	185330	23.665	ng/ul	0.00
46) Dimethylphthalate-d6	13.574	166	445293	23.663	ng/ul	0.00
49) Acenaphthylene-d8	13.839	160	529197	22.263	ng/ul	0.00
54) 4-Nitrophenol-d4	14.386	143	76400	23.329	ng/ul	0.00
60) Fluorene-d10	15.151	176	389100	23.482	ng/ul	0.00
65) 4,6-Dinitro-2-methylph...	15.298	200	84173	21.490	ng/ul	0.00
73) Anthracene-d10	17.004	188	632717	22.227	ng/ul	0.00
81) Pyrene-d10	19.309	212	718494	18.541	ng/ul	0.00
92) Benzo(a)pyrene-d12	23.115	264	873463	22.144	ng/ul	0.00
Target Compounds						
2) 1,4-Dioxane	3.163	88	15920	7.486	ng/uL#	87
5) Pyridine	3.540	79	100998	17.175	ng/ul	94
6) Benzaldehyde	6.681	77	33942	9.366	ng/ul	97
8) Phenol	6.728	94	133452	18.487	ng/ul	95
10) Bis(2-Chloroethyl)ether	6.957	93	104951	18.665	ng/ul	92
12) 2-Chlorophenol	7.081	128	109277	20.188	ng/ul	94
13) 2-Methylphenol	7.957	108	103460	19.715	ng/ul	99
14) 2,2'-oxybis(1-Chloropr...	8.040	45	138988	15.011	ng/ul#	93
16) Acetophenone	8.334	105	184864	20.812	ng/ul	98
17) N-Nitroso-di-n-propyla...	8.316	70	96920	21.966	ng/ul	95
18) 4-Methylphenol	8.287	108	115039	19.978	ng/ul	99
19) Hexachloroethane	8.557	117	46412	20.376	ng/ul	88
22) Nitrobenzene	8.704	77	141903	21.073	ng/ul	98
23) Isophorone	9.228	82	260833	22.195	ng/ul	97
25) 2-Nitrophenol	9.404	139	68628	22.338	ng/ul	96
26) 2,4-Dimethylphenol	9.469	107	139733	21.931	ng/ul	95
27) Bis(2-Chloroethoxy)met...	9.710	93	154041	20.713	ng/ul	99
29) 2,4-Dichlorophenol	9.928	162	125710	23.503	ng/ul	96
30) Naphthalene	10.316	128	379484	21.431	ng/ul	99
32) 4-Chloroaniline	10.445	127	185515	23.613	ng/ul	98
33) Hexachlorobutadiene	10.592	225	82382	22.658	ng/ul	98
34) Caprolactam	11.239	113	19818	12.809	ng/ul	86
35) 4-Chloro-3-methylphenol	11.575	107	133124	24.559	ng/ul	98
36) 2-Methylnaphthalene	11.939	142	299351	23.711	ng/ul	98

Data Path : Z:\svoasrv\HPCHEM1\BNA_M\Data\BM082821\
 Data File : BM031935.D
 Acq On : 28 Aug 2021 16:53
 Operator : CG/JU
 Sample : SSTD02020
 Misc :
 ALS Vial : 4 Sample Multiplier: 1

Instrument :
 BNA_M
 ClientSampleId :
 SSTD020017

Quant Time: Aug 28 23:55:31 2021
 Quant Method : Z:\SVOASRV\HPCHEM1\BNA_M\METHODS\SFAM-EPA-BM082821.M
 Quant Title : SVOA CALIBRATION
 QLast Update : Sat Aug 28 23:51:00 2021
 Response via : Initial Calibration

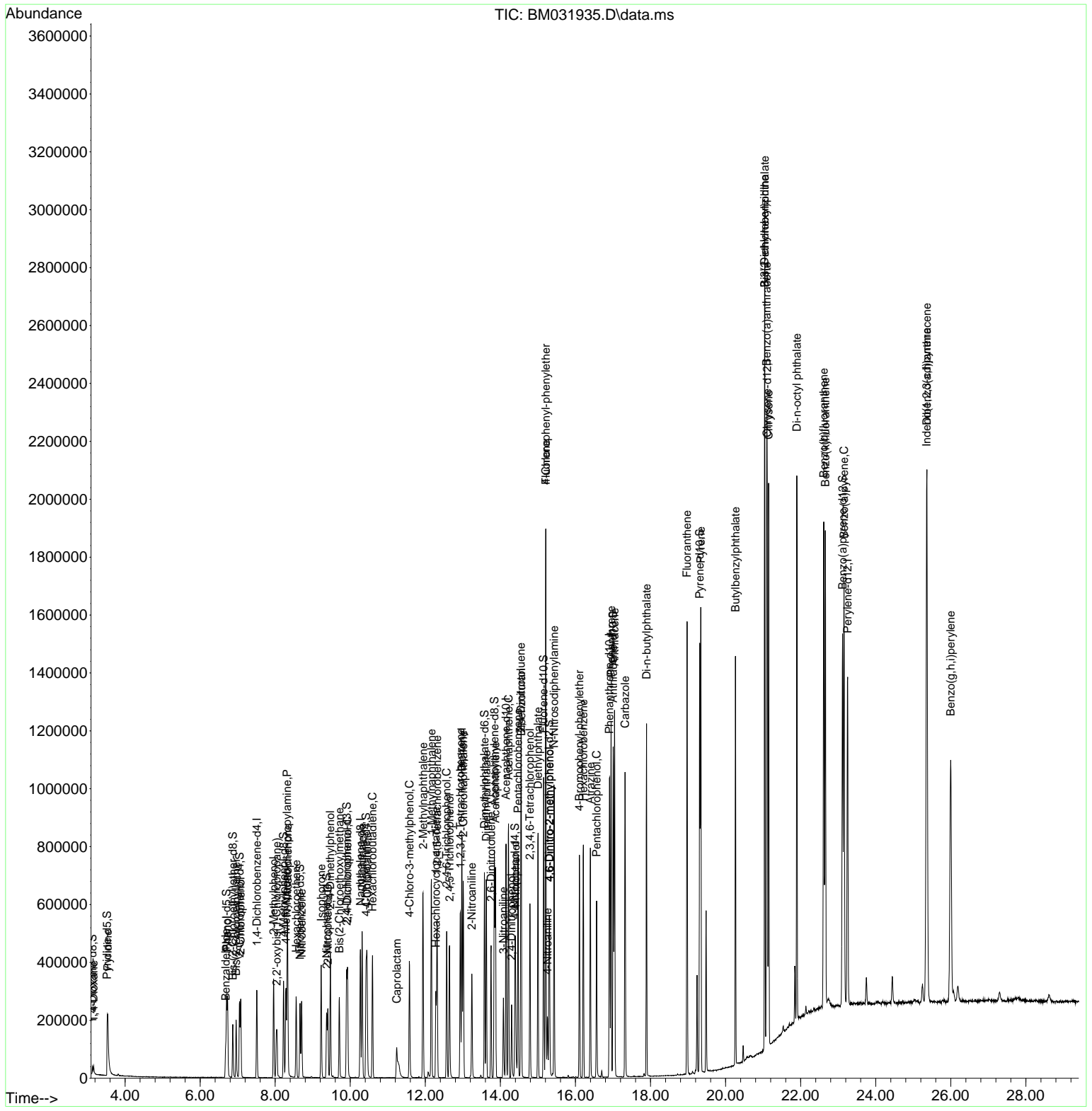
Compound	R.T.	QIon	Response	Conc	Units	Dev(Min)
37) 1-Methylnaphthalene	12.163	142	306034	23.912	ng/ul	99
39) 1,2,4,5-Tetrachloroben...	12.316	216	167245	20.512	ng/ul	99
40) Hexachlorocyclopentadiene	12.280	237	79135	15.967	ng/ul	99
41) 2,4,6-Trichlorophenol	12.569	196	112571	21.885	ng/ul	97
42) 2,4,5-Trichlorophenol	12.645	196	123909	22.727	ng/ul	99
43) 1,1'-Biphenyl	12.975	154	409883	20.928	ng/ul	95
44) 2-Chloronaphthalene	13.010	162	321734	20.990	ng/ul	99
45) 2-Nitroaniline	13.239	65	93483	21.705	ng/ul	100
47) Dimethylphthalate	13.627	163	434705	23.580	ng/ul	100
48) 2,6-Dinitrotoluene	13.751	165	88738	24.992	ng/ul	96
50) Acenaphthylene	13.869	152	487250	21.942	ng/ul	97
51) 3-Nitroaniline	14.080	138	63183	17.032	ng/ul	99
52) Acenaphthene	14.216	153	348982	21.543	ng/ul	97
53) 2,4-Dinitrophenol	14.298	184	52309	24.723	ng/ul	95
55) 4-Nitrophenol	14.404	109	71286	25.646	ng/ul	84
56) Dibenzofuran	14.557	168	514762	22.567	ng/ul	99
57) 2,4-Dinitrotoluene	14.545	165	131319	26.528	ng/ul#	82
58) 2,3,4,6-Tetrachlorophenol	14.786	232	112490	24.814	ng/ul	99
59) Diethylphthalate	15.004	149	449687	24.577	ng/ul	98
61) Fluorene	15.210	166	436458	23.231	ng/ul	97
62) 4-Chlorophenyl-phenyle...	15.210	204	223046	23.589	ng/ul	100
63) 4-Nitroaniline	15.257	138	48292	13.666	ng/ul#	86
66) 4,6-Dinitro-2-methylph...	15.310	198	82426	21.798	ng/ul	98
67) N-Nitrosodiphenylamine	15.433	169	385737	21.182	ng/ul	98
68) 4-Bromophenyl-phenylether	16.104	248	135065	20.994	ng/ul	95
69) Hexachlorobenzene	16.210	284	155761	21.333	ng/ul	98
70) Atrazine	16.398	200	139898	21.570	ng/ul	97
71) Pentachlorophenol	16.563	266	92316	20.806	ng/ul	97
72) Phenanthrene	16.951	178	721600	22.138	ng/ul	100
74) Anthracene	17.039	178	740158	22.101	ng/ul	99
75) 1,2,3,4-Tetrachloroben...	12.933	216	169875	17.938	ng/uL	98
76) Pentachlorobenzene	14.469	250	179701	19.392	ng/uL	98
77) Carbazole	17.321	167	659158	22.642	ng/ul	100
78) Di-n-butylphthalate	17.892	149	797551	23.771	ng/ul	99
80) Fluoranthene	18.974	202	883572	18.491	ng/ul#	95
82) Pyrene	19.339	202	920474	18.587	ng/ul	96
83) Butylbenzylphthalate	20.262	149	378930	22.384	ng/ul	99
84) 3,3'-Dichlorobenzidine	21.039	252	311707	24.311	ng/ul	97
85) Benzo(a)anthracene	21.098	228	961259	21.881	ng/ul	98
86) Bis(2-ethylhexyl)phtha...	21.045	149	612173	24.530	ng/ul#	97
87) Chrysene	21.145	228	922592	21.344	ng/ul	100
89) Di-n-octyl phthalate	21.897	149	1076812	22.690	ng/ul	100
90) Benzo(b)fluoranthene	22.615	252	1034384	21.013	ng/ul	98
91) Benzo(k)fluoranthene	22.656	252	1049249	21.929	ng/ul	98
93) Benzo(a)pyrene	23.156	252	951901	21.852	ng/ul	98
94) Indeno(1,2,3-cd)pyrene	25.356	276	1204177	22.227	ng/ul	95
95) Dibenzo(a,h)anthracene	25.362	278	1006372	22.155	ng/ul	97
96) Benzo(g,h,i)perylene	25.997	276	993756	22.879	ng/ul	96

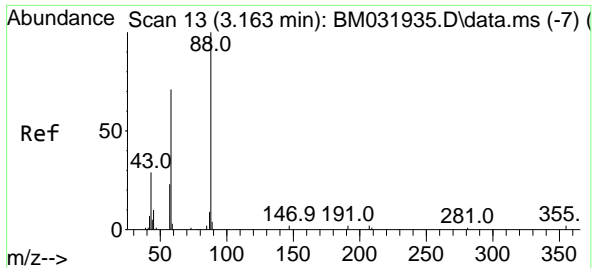
(#) = qualifier out of range (m) = manual integration (+) = signals summed

Data Path : Z:\svoasrv\HPCHEM1\BNA_M\Data\BM082821\
 Data File : BM031935.D
 Acq On : 28 Aug 2021 16:53
 Operator : CG/JU
 Sample : SSTD02020
 Misc :
 ALS Vial : 4 Sample Multiplier: 1

Instrument :
 BNA_M
 Client Sampled :
 SSTD020017

Quant Time: Aug 28 23:55:31 2021
 Quant Method : Z:\SVOASRV\HPCHEM1\BNA_M\METHODS\SFAM-EPA-BM082821.M
 Quant Title : SVOA CALIBRATION
 QLast Update : Sat Aug 28 23:51:00 2021
 Response via : Initial Calibration



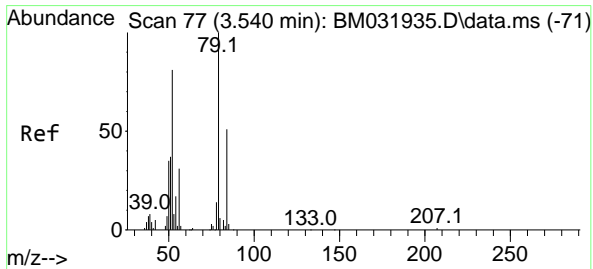
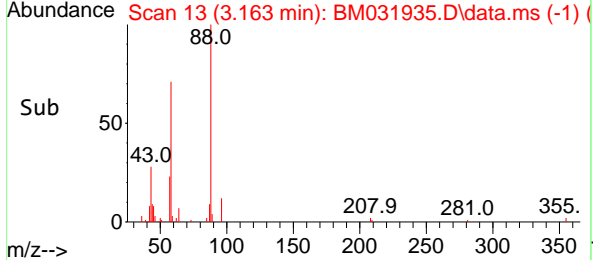
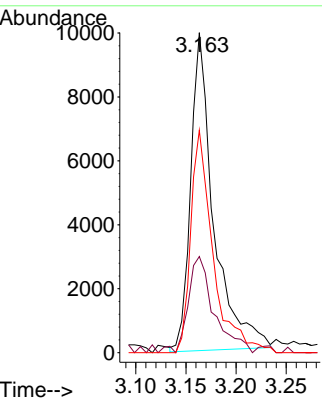
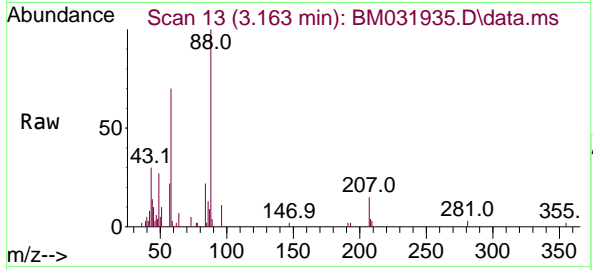


#2
 1,4-Dioxane
 Concen: 7.486 ng/uL
 RT: 3.163 min Scan# 13
 Delta R.T. 0.000 min
 Lab File: BM031935.D
 Acq: 28 Aug 2021 16:53

Instrument :
 BNA_M
ClientSampled :
 SSTD020017

Tgt Ion: 88 Resp: 15920

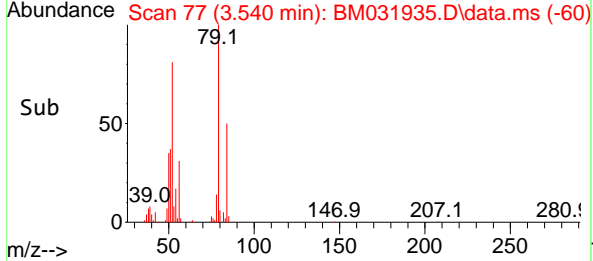
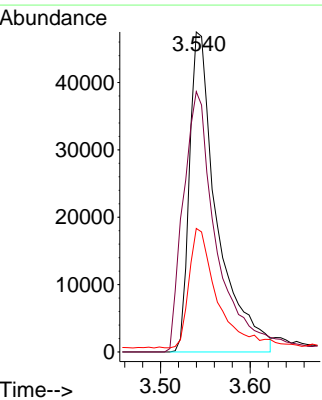
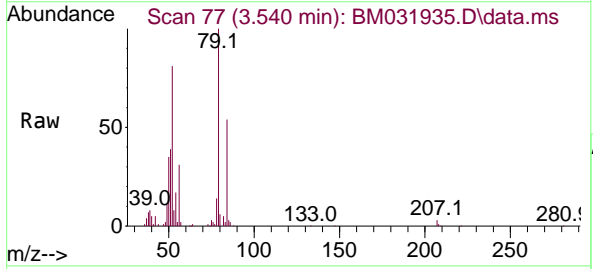
Ion	Ratio	Lower	Upper
88	100		
43	30.0	31.5	47.3#
58	69.5	64.1	96.1

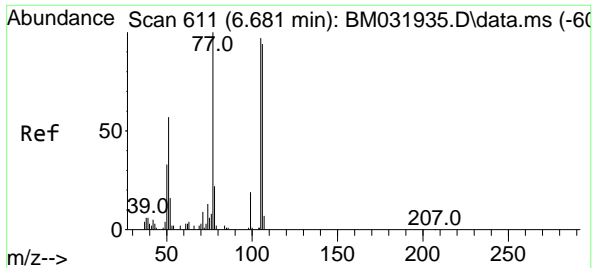


#5
 Pyridine
 Concen: 17.175 ng/uL
 RT: 3.540 min Scan# 77
 Delta R.T. 0.000 min
 Lab File: BM031935.D
 Acq: 28 Aug 2021 16:53

Tgt Ion: 79 Resp: 100998

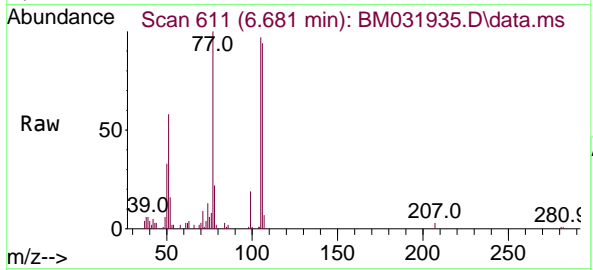
Ion	Ratio	Lower	Upper
79	100		
52	81.3	69.9	104.9
51	38.6	33.8	50.6





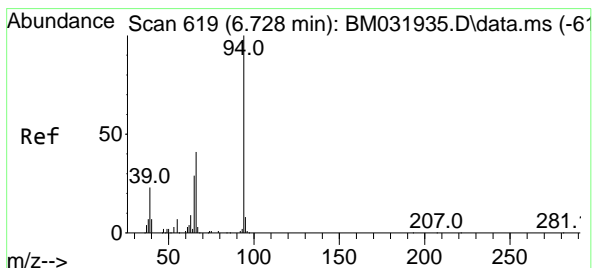
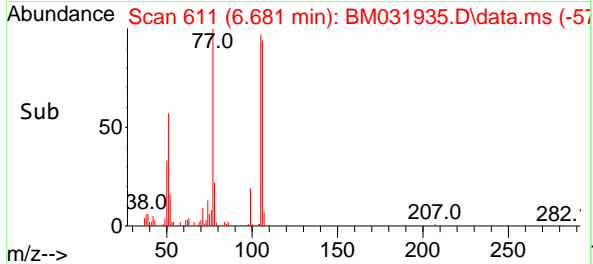
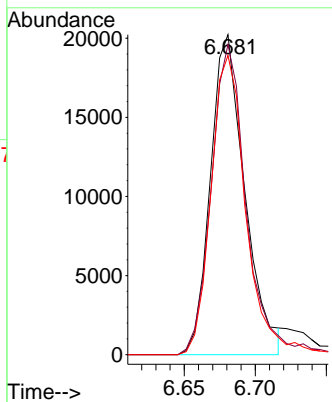
#6
Benzaldehyde
Concen: 9.366 ng/u1
RT: 6.681 min Scan# 611
Delta R.T. 0.000 min
Lab File: BM031935.D
Acq: 28 Aug 2021 16:53

Instrument :
BNA_M
ClientSampleId :
SSTD020017

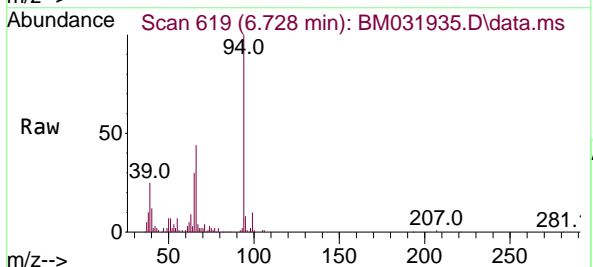


Tgt Ion: 77 Resp: 33942

Ion	Ratio	Lower	Upper
77	100		
105	96.9	82.2	123.4
106	93.5	75.0	112.4

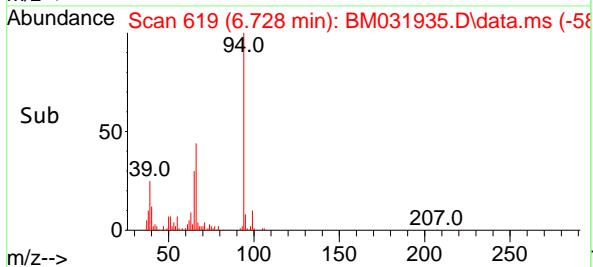
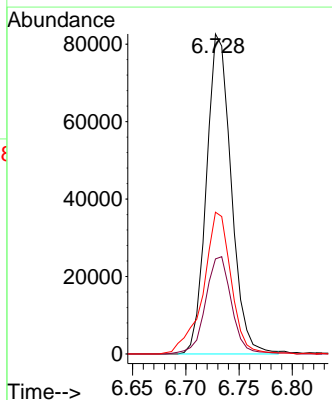


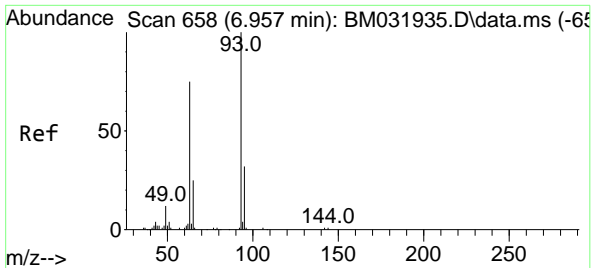
#8
Phenol
Concen: 18.487 ng/u1
RT: 6.728 min Scan# 619
Delta R.T. 0.000 min
Lab File: BM031935.D
Acq: 28 Aug 2021 16:53



Tgt Ion: 94 Resp: 133452

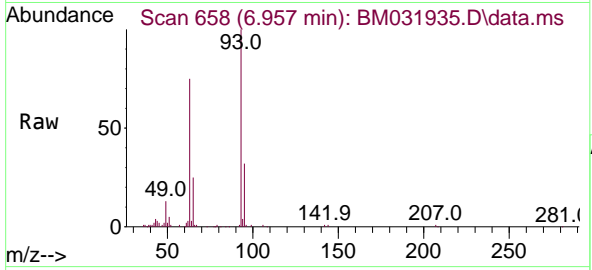
Ion	Ratio	Lower	Upper
94	100		
65	29.7	24.2	36.4
66	44.3	31.4	47.0





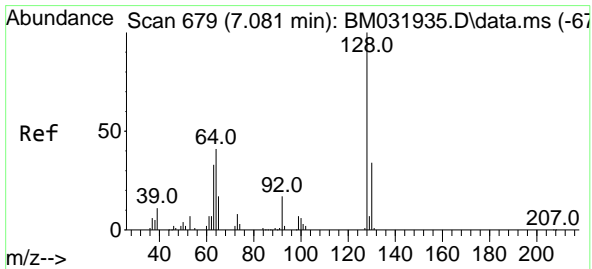
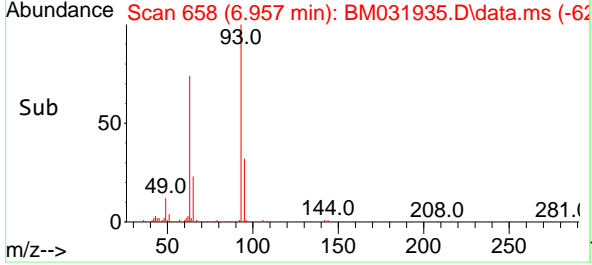
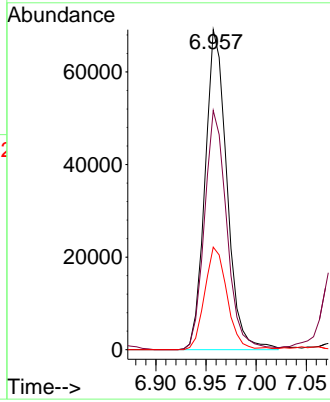
#10
 Bis(2-Chloroethyl)ether
 Concen: 18.665 ng/ul
 RT: 6.957 min Scan# 658
 Delta R.T. 0.000 min
 Lab File: BM031935.D
 Acq: 28 Aug 2021 16:53

Instrument :
 BNA_M
ClientSampled :
 SSTD020017

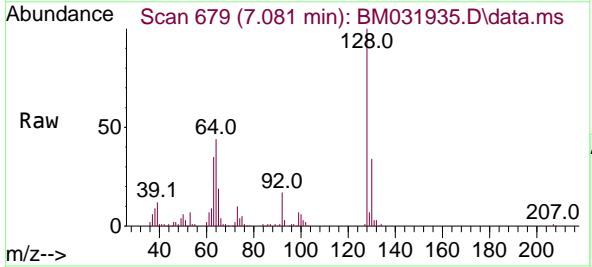


Tgt Ion: 93 Resp: 104951

Ion	Ratio	Lower	Upper
93	100		
63	74.7	68.0	102.0
95	32.1	25.8	38.6

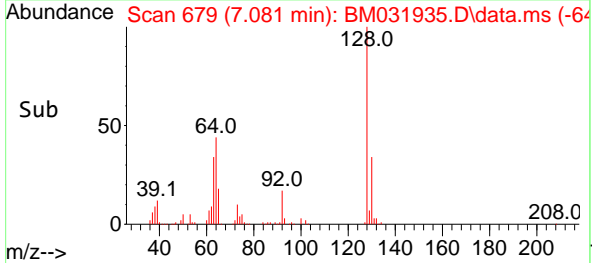
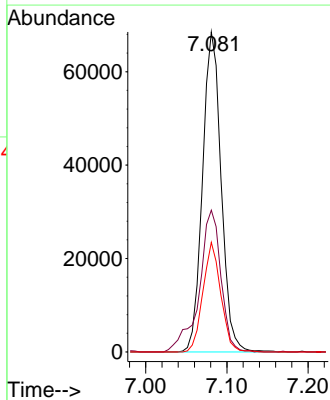


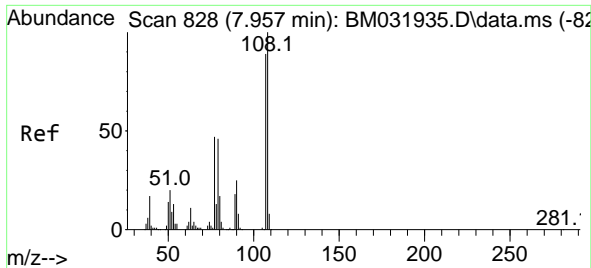
#12
 2-Chlorophenol
 Concen: 20.188 ng/ul
 RT: 7.081 min Scan# 679
 Delta R.T. 0.000 min
 Lab File: BM031935.D
 Acq: 28 Aug 2021 16:53



Tgt Ion: 128 Resp: 109277

Ion	Ratio	Lower	Upper
128	100		
64	44.3	39.2	58.8
130	34.3	25.3	37.9

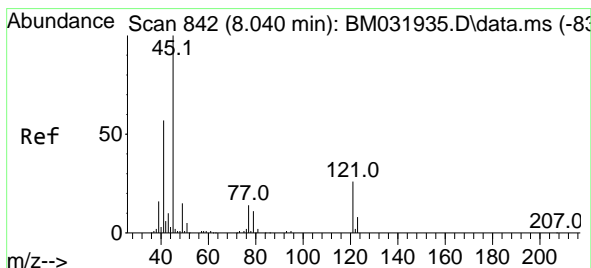
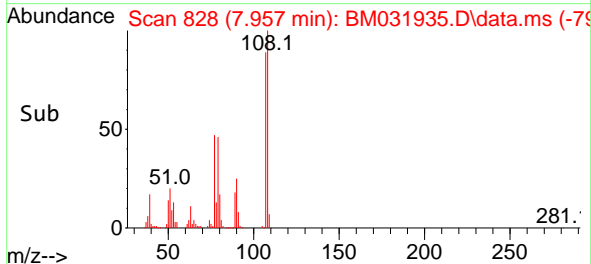
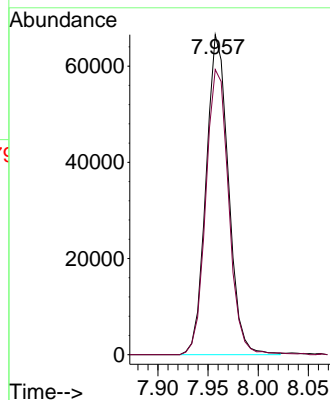
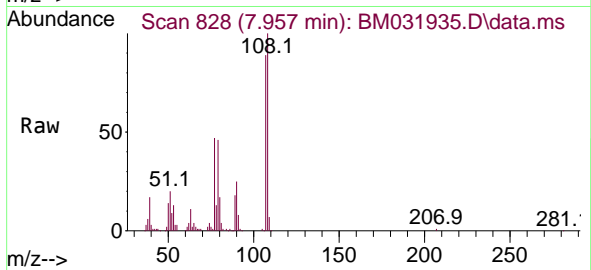




#13
 2-Methylphenol
 Concen: 19.715 ng/ul
 RT: 7.957 min Scan# 828
 Delta R.T. 0.000 min
 Lab File: BM031935.D
 Acq: 28 Aug 2021 16:53

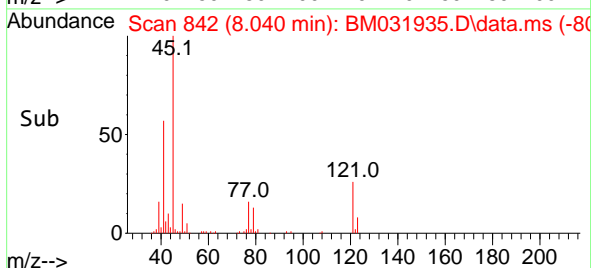
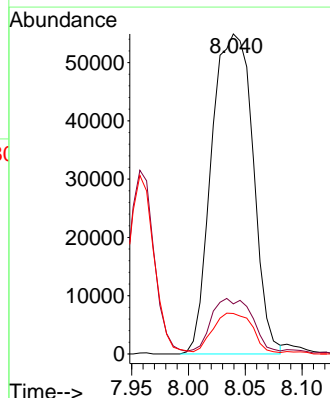
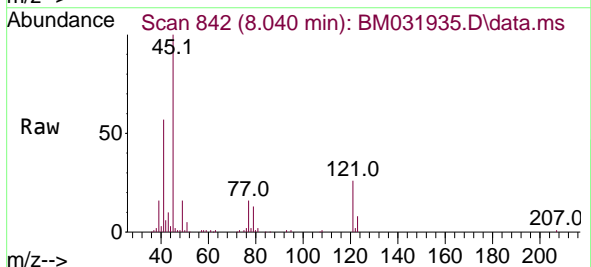
Instrument :
 BNA_M
 ClientSampleId :
 SSTD020017

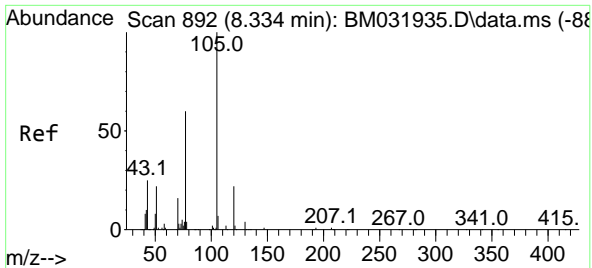
Tgt Ion:108 Resp: 103460
 Ion Ratio Lower Upper
 108 100
 107 89.1 70.6 105.8



#14
 2,2'-oxybis(1-Chloropropane)
 Concen: 15.011 ng/ul
 RT: 8.040 min Scan# 842
 Delta R.T. 0.000 min
 Lab File: BM031935.D
 Acq: 28 Aug 2021 16:53

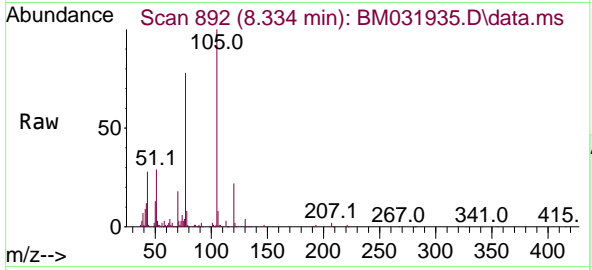
Tgt Ion: 45 Resp: 138988
 Ion Ratio Lower Upper
 45 100
 77 15.7 10.2 15.4#
 79 12.7 7.8 11.8#





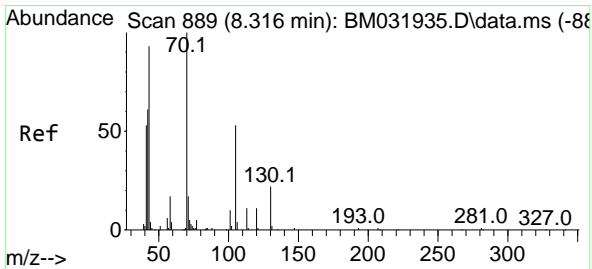
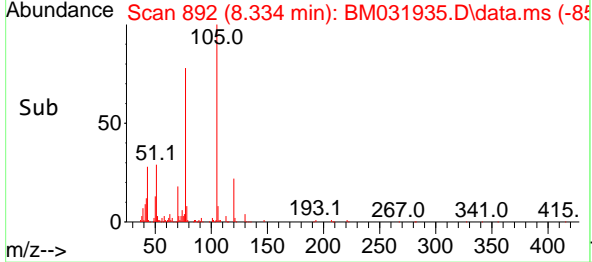
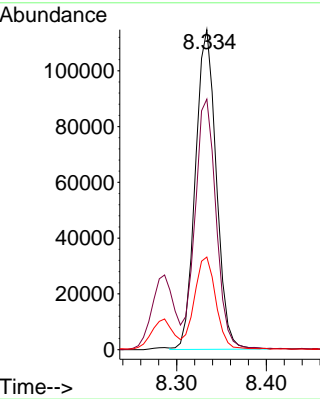
#16
 Acetophenone
 Concen: 20.812 ng/ul
 RT: 8.334 min Scan# 892
 Delta R.T. 0.000 min
 Lab File: BM031935.D
 Acq: 28 Aug 2021 16:53

Instrument :
 BNA_M
 ClientSampleId :
 SSTD020017

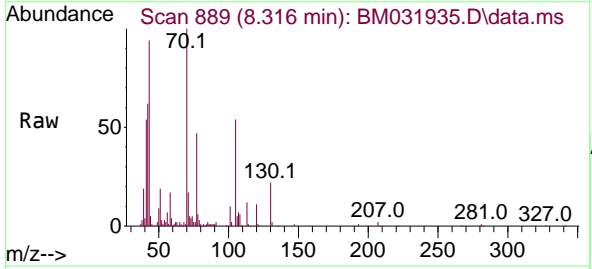


Tgt Ion: 105 Resp: 184864

Ion	Ratio	Lower	Upper
105	100		
77	78.3	63.7	95.5
51	28.9	25.4	38.0

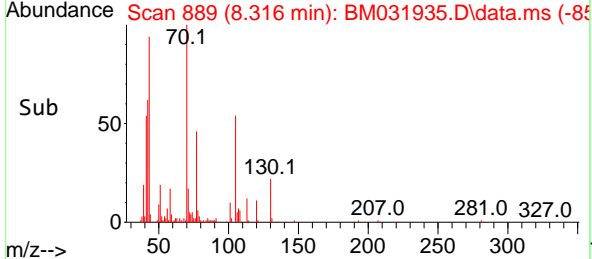
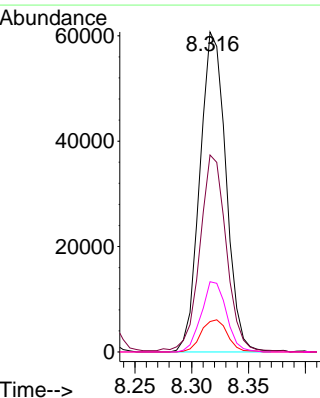


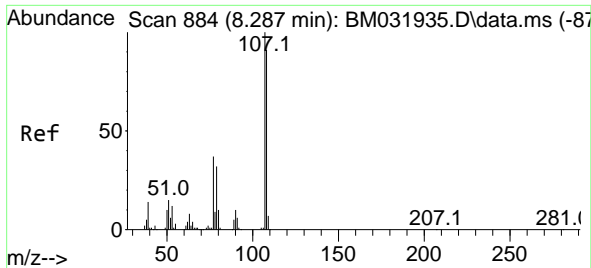
#17
 N-Nitroso-di-n-propylamine
 Concen: 21.966 ng/ul
 RT: 8.316 min Scan# 889
 Delta R.T. 0.000 min
 Lab File: BM031935.D
 Acq: 28 Aug 2021 16:53



Tgt Ion: 70 Resp: 96920

Ion	Ratio	Lower	Upper
70	100		
42	61.6	53.4	80.0
101	9.5	7.4	11.0
130	21.9	16.8	25.2

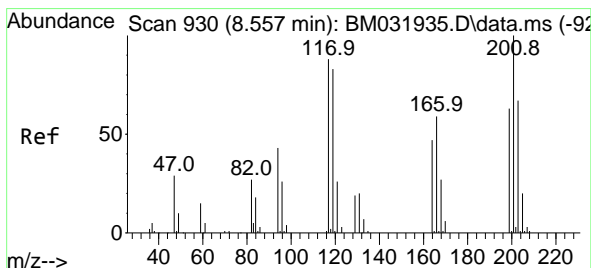
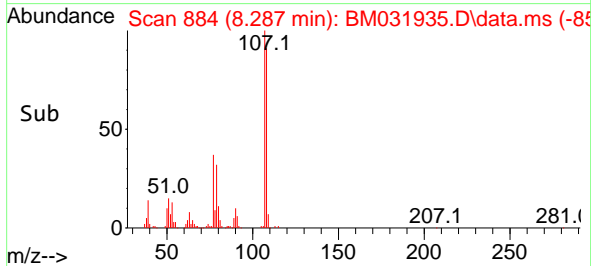
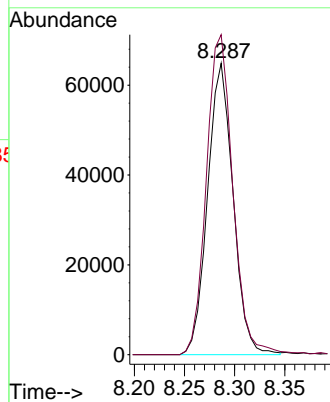
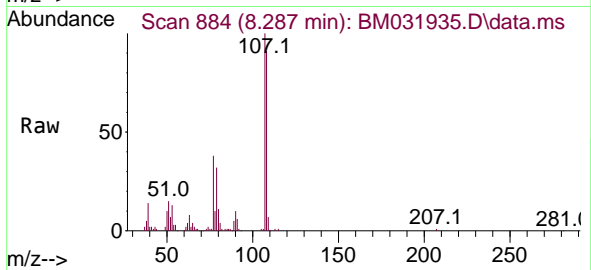




#18
 4-Methylphenol
 Concen: 19.978 ng/uI
 RT: 8.287 min Scan# 884
 Delta R.T. 0.000 min
 Lab File: BM031935.D
 Acq: 28 Aug 2021 16:53

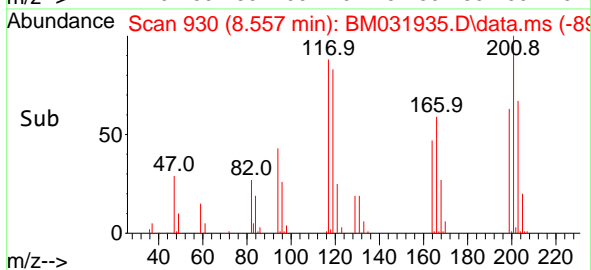
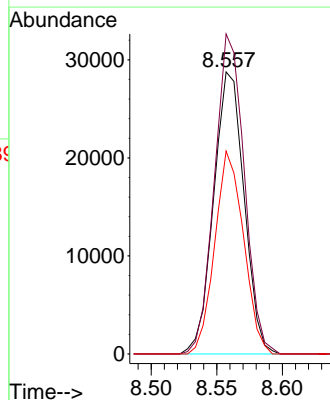
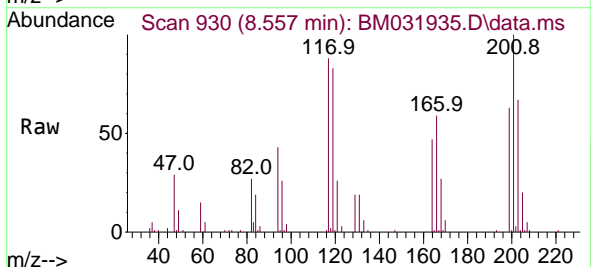
Instrument :
 BNA_M
 ClientSampleId :
 SSTD020017

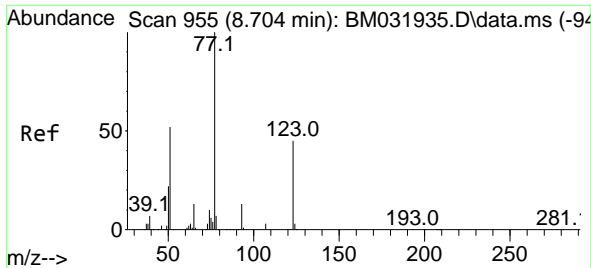
Tgt Ion:108 Resp: 115039
 Ion Ratio Lower Upper
 108 100
 107 109.8 87.0 130.6



#19
 Hexachloroethane
 Concen: 20.376 ng/uI
 RT: 8.557 min Scan# 930
 Delta R.T. 0.000 min
 Lab File: BM031935.D
 Acq: 28 Aug 2021 16:53

Tgt Ion:117 Resp: 46412
 Ion Ratio Lower Upper
 117 100
 201 113.5 80.1 120.1
 199 71.9 50.8 76.2

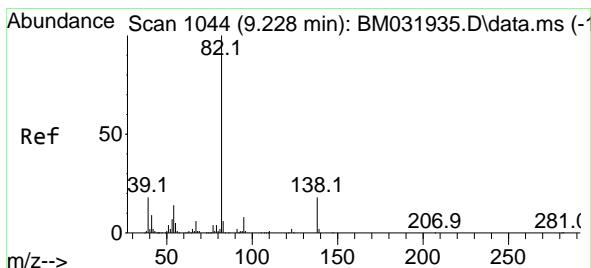
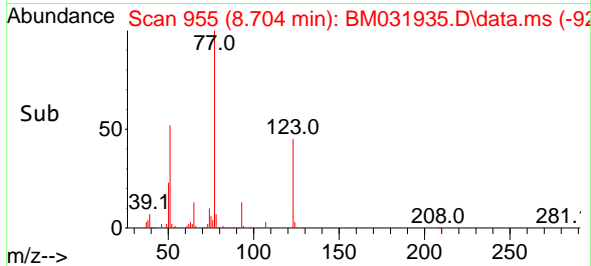
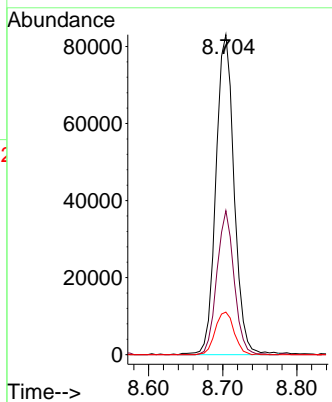
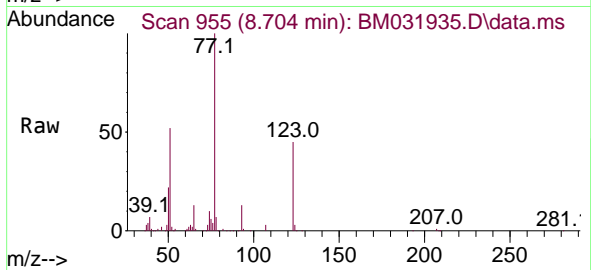




#22
 Nitrobenzene
 Concen: 21.073 ng/u1
 RT: 8.704 min Scan# 955
 Delta R.T. 0.000 min
 Lab File: BM031935.D
 Acq: 28 Aug 2021 16:53

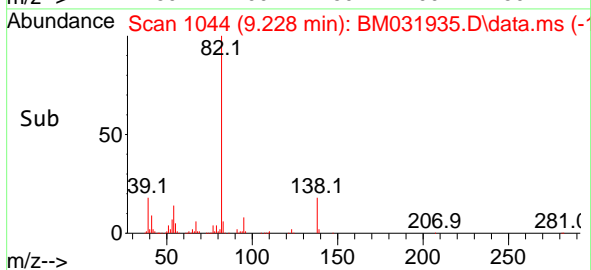
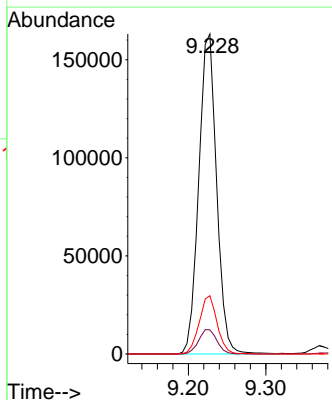
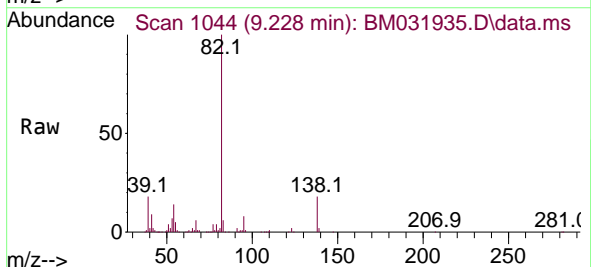
Instrument :
 BNA_M
 ClientSampled :
 SSTD020017

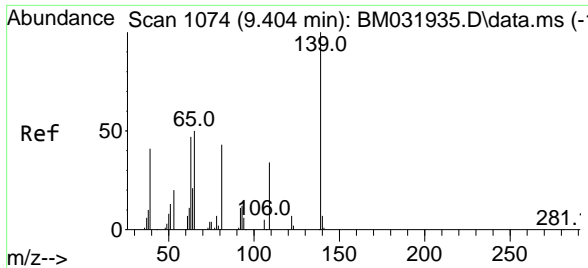
Tgt Ion	Resp	Lower	Upper
77	141903		
77	100		
123	45.0	34.8	52.2
65	13.3	10.4	15.6



#23
 Isophorone
 Concen: 22.195 ng/u1
 RT: 9.228 min Scan# 1044
 Delta R.T. 0.000 min
 Lab File: BM031935.D
 Acq: 28 Aug 2021 16:53

Tgt Ion	Resp	Lower	Upper
82	260833		
82	100		
95	7.5	5.3	7.9
138	18.2	13.6	20.4

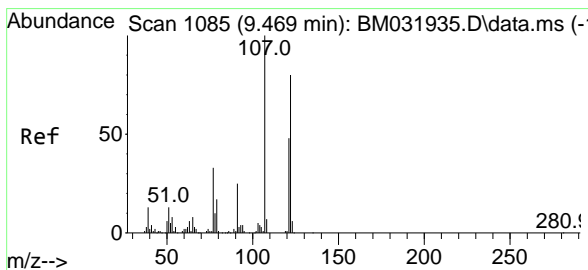
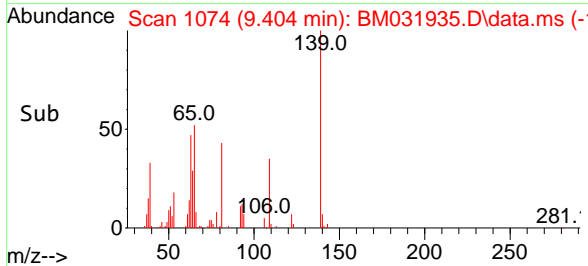
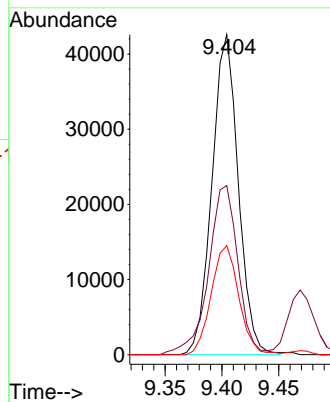
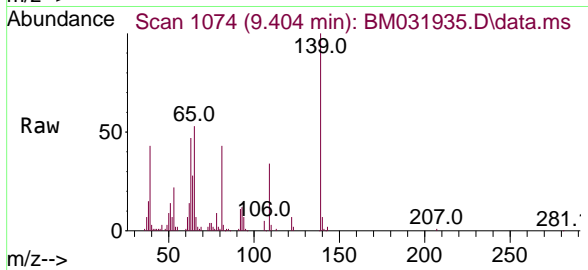




#25
 2-Nitrophenol
 Concen: 22.338 ng/ul
 RT: 9.404 min Scan# 1074
 Delta R.T. 0.000 min
 Lab File: BM031935.D
 Acq: 28 Aug 2021 16:53

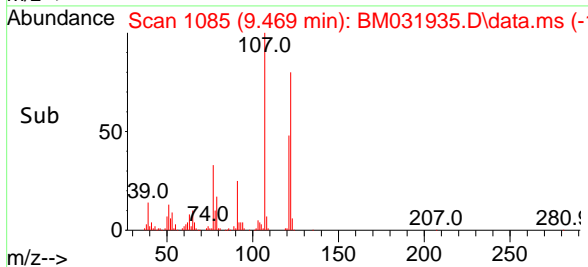
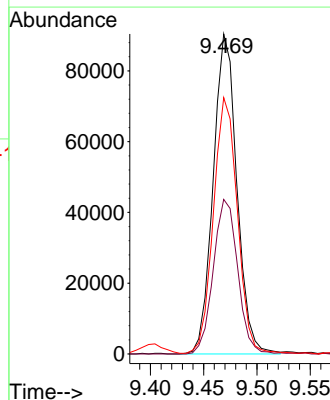
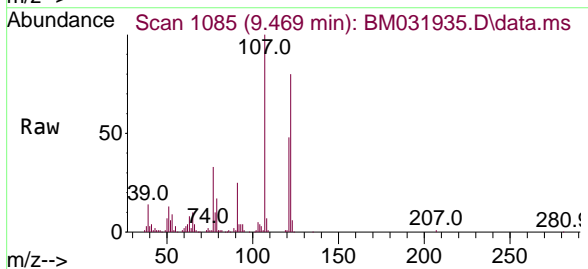
Instrument :
 BNA_M
 ClientSampled :
 SSTD020017

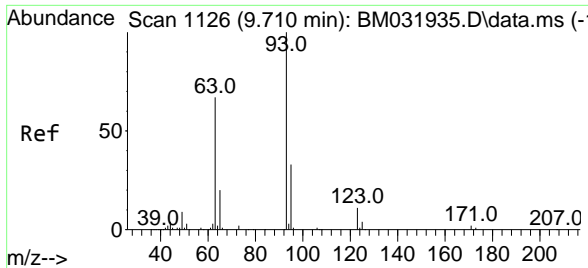
Tgt Ion	Resp	Lower	Upper
139	68628		
65	52.8	43.7	65.5
109	34.1	24.0	36.0



#26
 2,4-Dimethylphenol
 Concen: 21.931 ng/ul
 RT: 9.469 min Scan# 1085
 Delta R.T. 0.000 min
 Lab File: BM031935.D
 Acq: 28 Aug 2021 16:53

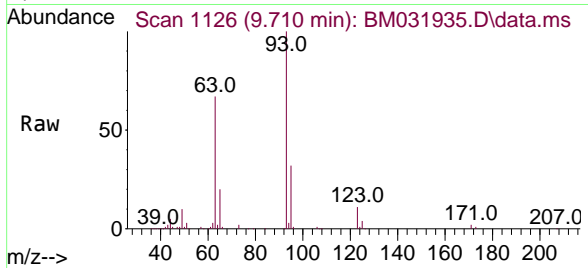
Tgt Ion	Resp	Lower	Upper
107	139733		
121	48.3	41.0	61.6
122	80.1	68.2	102.2





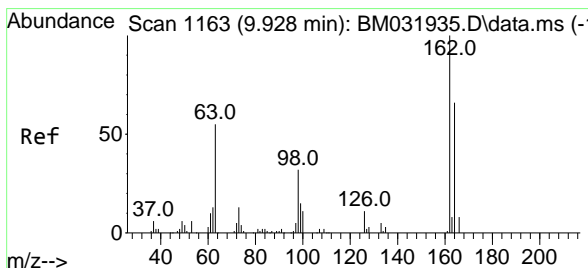
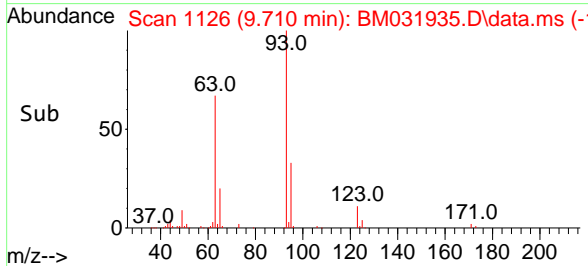
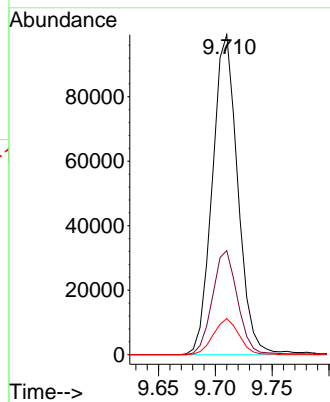
#27
 Bis(2-Chloroethoxy)methane
 Concen: 20.713 ng/ul
 RT: 9.710 min Scan# 1126
 Delta R.T. 0.000 min
 Lab File: BM031935.D
 Acq: 28 Aug 2021 16:53

Instrument :
 BNA_M
 ClientSampleId :
 SSTD020017

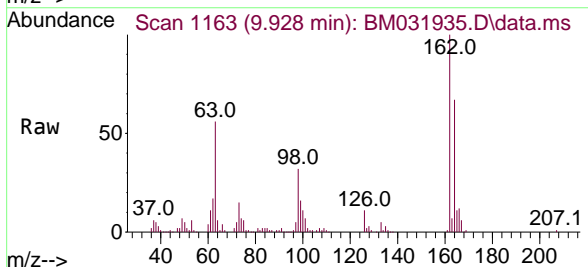


Tgt Ion: 93 Resp: 154041

Ion	Ratio	Lower	Upper
93	100		
95	32.5	25.9	38.9
123	11.3	8.5	12.7

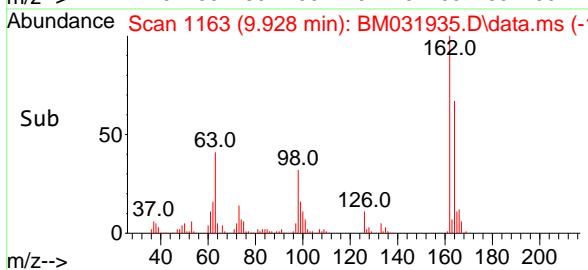
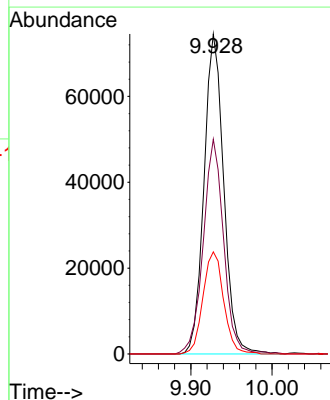


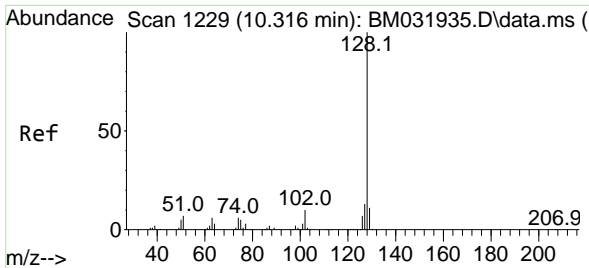
#29
 2,4-Dichlorophenol
 Concen: 23.503 ng/ul
 RT: 9.928 min Scan# 1163
 Delta R.T. 0.000 min
 Lab File: BM031935.D
 Acq: 28 Aug 2021 16:53



Tgt Ion: 162 Resp: 125710

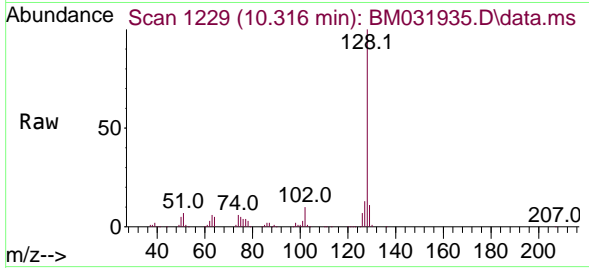
Ion	Ratio	Lower	Upper
162	100		
164	67.1	51.6	77.4
98	31.9	28.2	42.4



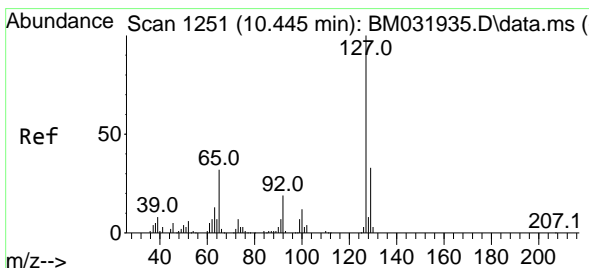
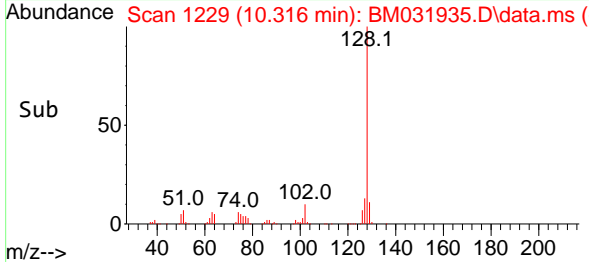
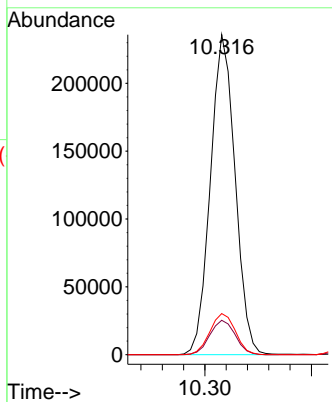


#30
 Naphthalene
 Concen: 21.431 ng/u1
 RT: 10.316 min Scan# 1229
 Delta R.T. 0.000 min
 Lab File: BM031935.D
 Acq: 28 Aug 2021 16:53

Instrument :
 BNA_M
 ClientSampled :
 SSTD020017

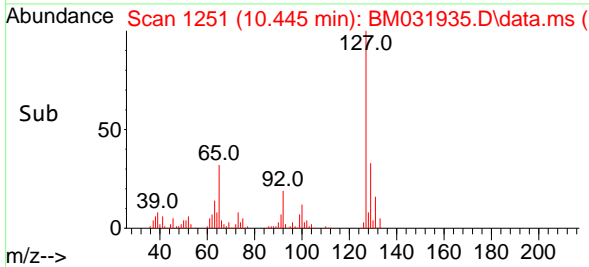
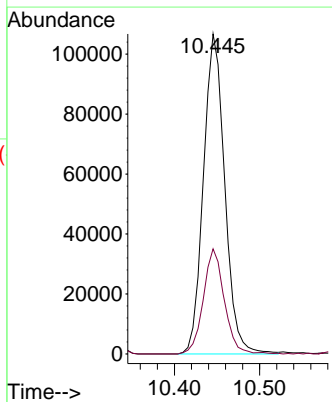
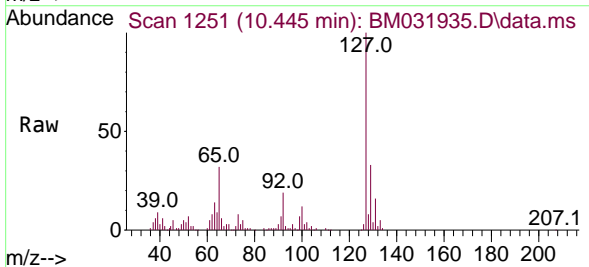


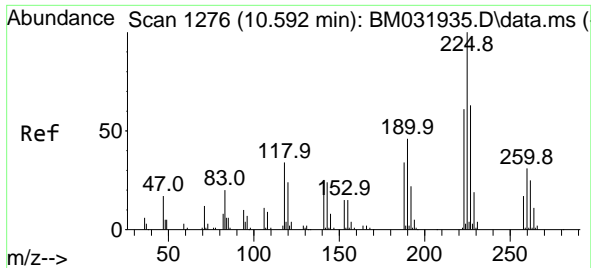
Tgt Ion:128 Resp: 379484
 Ion Ratio Lower Upper
 128 100
 129 10.8 9.0 13.4
 127 12.8 10.6 15.8



#32
 4-Chloroaniline
 Concen: 23.613 ng/u1
 RT: 10.445 min Scan# 1251
 Delta R.T. 0.000 min
 Lab File: BM031935.D
 Acq: 28 Aug 2021 16:53

Tgt Ion:127 Resp: 185515
 Ion Ratio Lower Upper
 127 100
 129 32.8 25.6 38.4

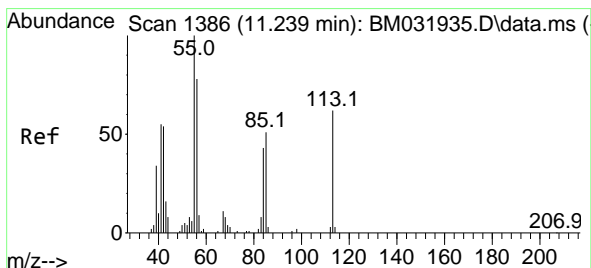
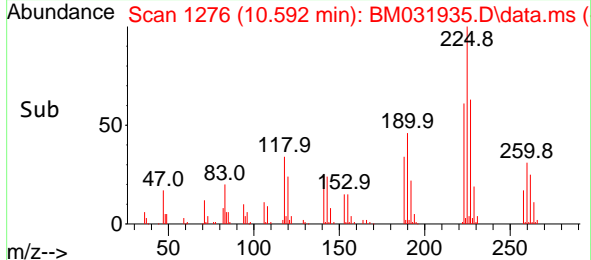
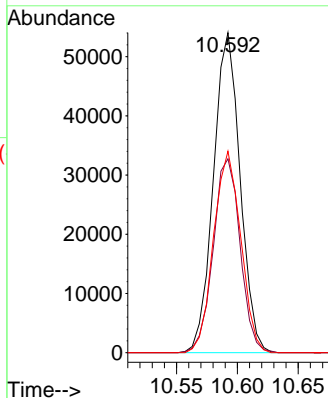
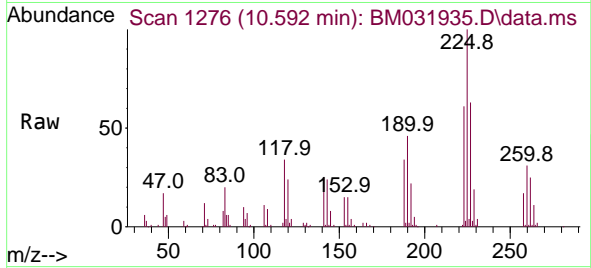




#33
 Hexachlorobutadiene
 Concen: 22.658 ng/uI
 RT: 10.592 min Scan# 1276
 Delta R.T. 0.000 min
 Lab File: BM031935.D
 Acq: 28 Aug 2021 16:53

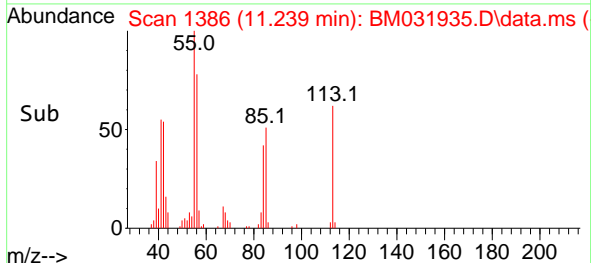
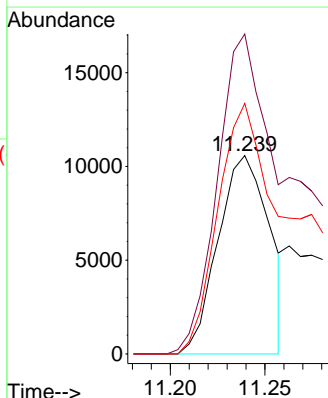
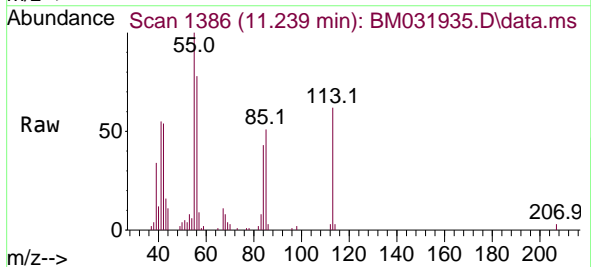
Instrument :
 BNA_M
 ClientSampled :
 SSTD020017

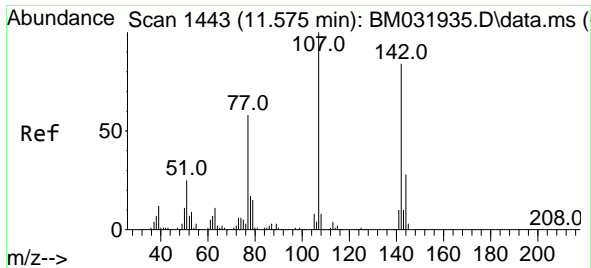
Tgt Ion:225 Resp: 82382
 Ion Ratio Lower Upper
 225 100
 223 60.6 50.7 76.1
 227 63.0 50.7 76.1



#34
 Caprolactam
 Concen: 12.809 ng/uI
 RT: 11.239 min Scan# 1386
 Delta R.T. 0.000 min
 Lab File: BM031935.D
 Acq: 28 Aug 2021 16:53

Tgt Ion:113 Resp: 19818
 Ion Ratio Lower Upper
 113 100
 55 161.3 155.2 232.8
 56 126.3 101.9 152.9

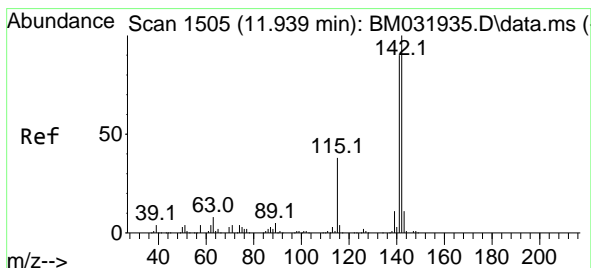
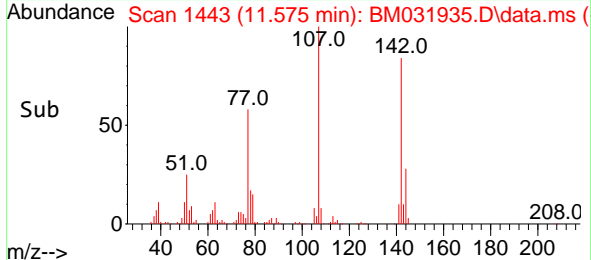
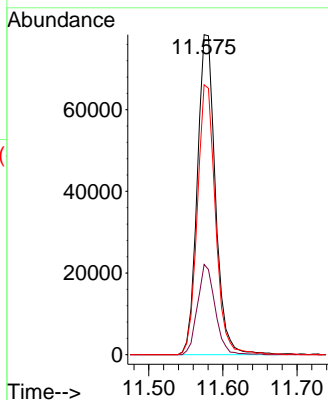
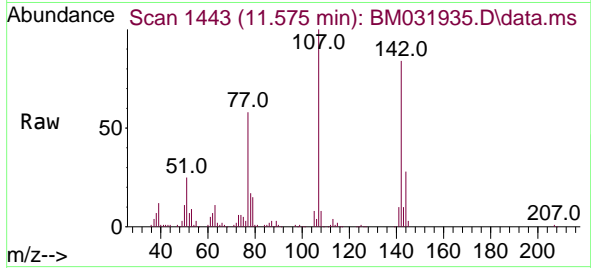




#35
 4-Chloro-3-methylphenol
 Concen: 24.559 ng/ul
 RT: 11.575 min Scan# 1443
 Delta R.T. 0.000 min
 Lab File: BM031935.D
 Acq: 28 Aug 2021 16:53

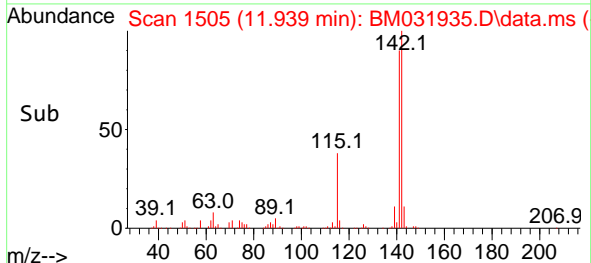
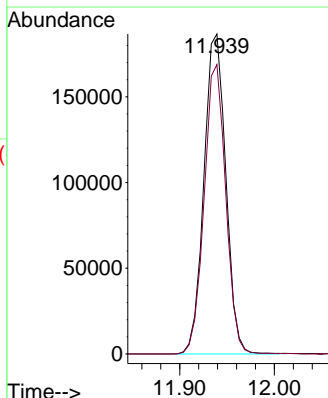
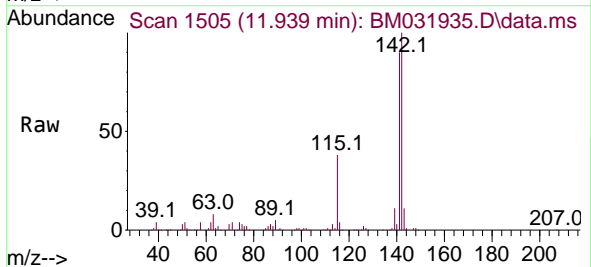
Instrument :
 BNA_M
 ClientSampled :
 SSTD020017

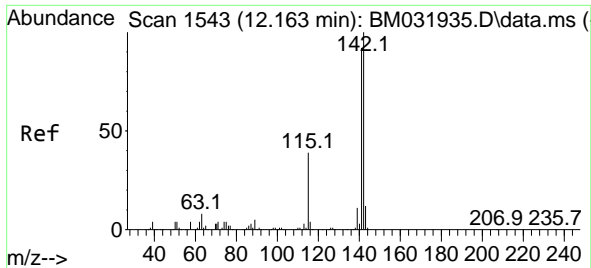
Tgt Ion	Resp	Lower	Upper
107	133124		
144	28.2	22.3	33.5
142	84.3	65.6	98.4



#36
 2-Methylnaphthalene
 Concen: 23.711 ng/ul
 RT: 11.939 min Scan# 1505
 Delta R.T. 0.000 min
 Lab File: BM031935.D
 Acq: 28 Aug 2021 16:53

Tgt Ion	Resp	Lower	Upper
142	299351		
141	90.4	70.6	105.8

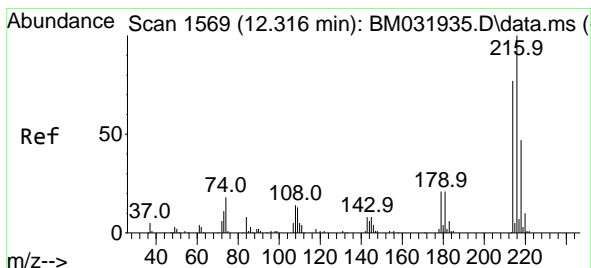
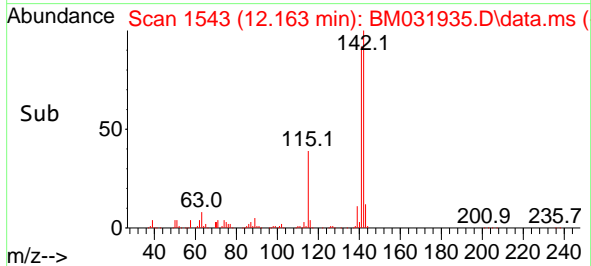
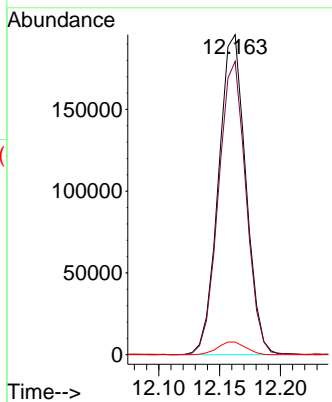
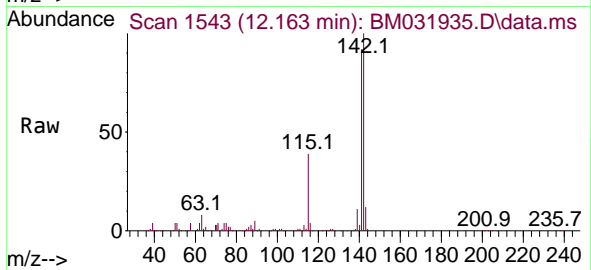




#37
 1-Methylnaphthalene
 Concen: 23.912 ng/uI
 RT: 12.163 min Scan# 1543
 Delta R.T. 0.000 min
 Lab File: BM031935.D
 Acq: 28 Aug 2021 16:53

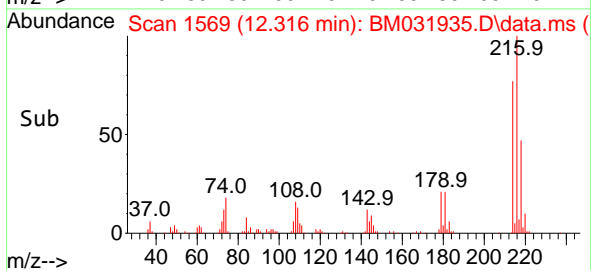
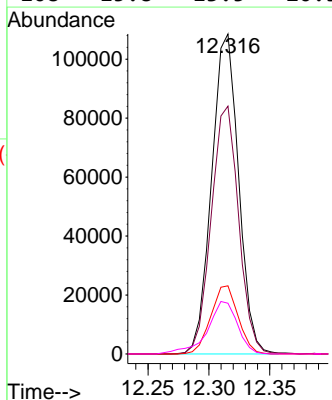
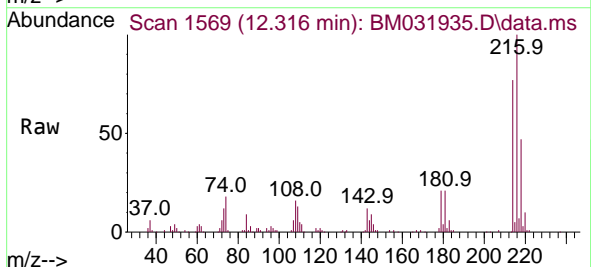
Instrument :
 BNA_M
 ClientSampled :
 SSTD020017

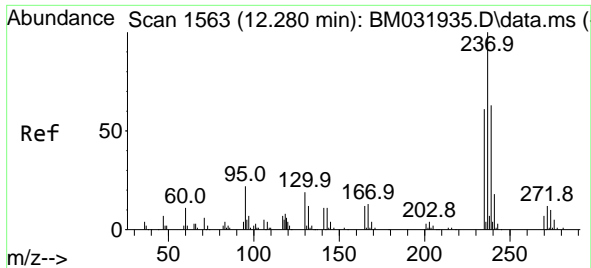
Tgt Ion	Resp	Lower	Upper
142	100		
141	91.6	72.8	109.2
116	4.0	3.1	4.7



#39
 1,2,4,5-Tetrachlorobenzene
 Concen: 20.512 ng/uI
 RT: 12.316 min Scan# 1569
 Delta R.T. 0.000 min
 Lab File: BM031935.D
 Acq: 28 Aug 2021 16:53

Tgt Ion	Resp	Lower	Upper
216	100		
214	77.5	62.2	93.4
179	21.3	16.6	24.8
108	15.8	13.5	20.3

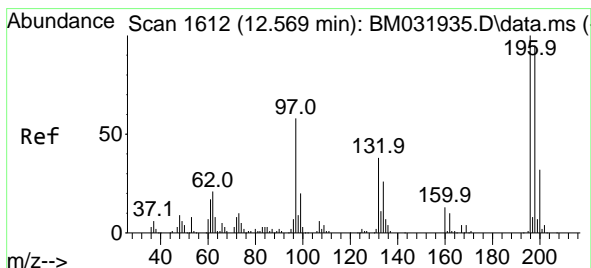
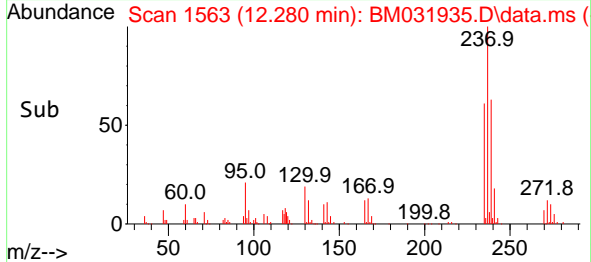
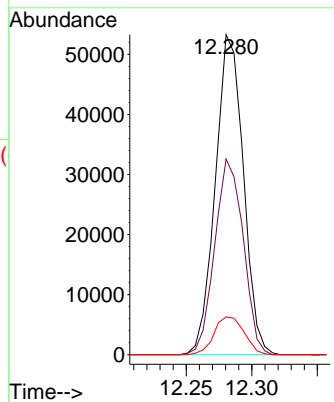
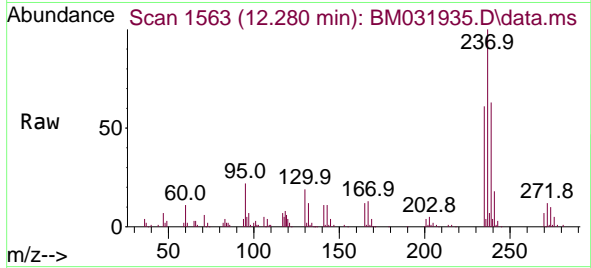




#40
 Hexachlorocyclopentadiene
 Concen: 15.967 ng/ul
 RT: 12.280 min Scan# 1563
 Delta R.T. 0.000 min
 Lab File: BM031935.D
 Acq: 28 Aug 2021 16:53

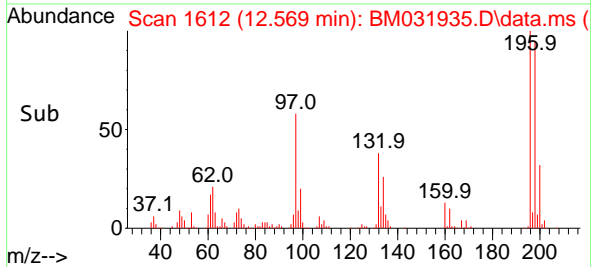
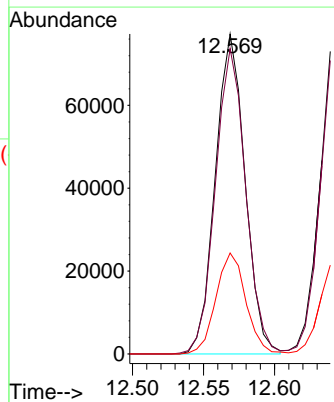
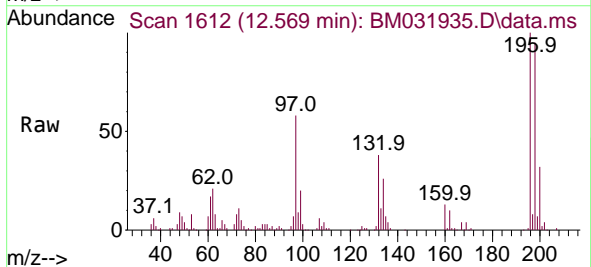
Instrument :
 BNA_M
 ClientSampled :
 SSTD020017

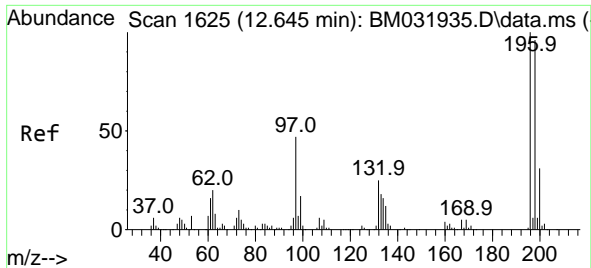
Tgt Ion	Resp	Lower	Upper
237	100		
235	61.2	49.0	73.4
272	11.8	11.0	16.4



#41
 2,4,6-Trichlorophenol
 Concen: 21.885 ng/ul
 RT: 12.569 min Scan# 1612
 Delta R.T. 0.000 min
 Lab File: BM031935.D
 Acq: 28 Aug 2021 16:53

Tgt Ion	Resp	Lower	Upper
196	100		
198	95.5	78.8	118.2
200	31.6	26.0	39.0

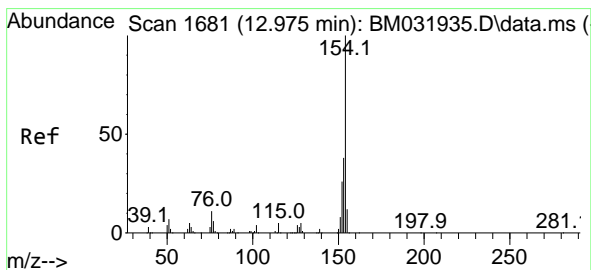
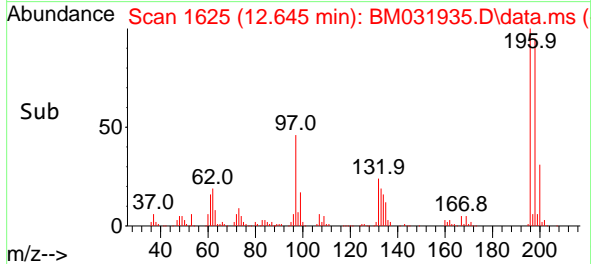
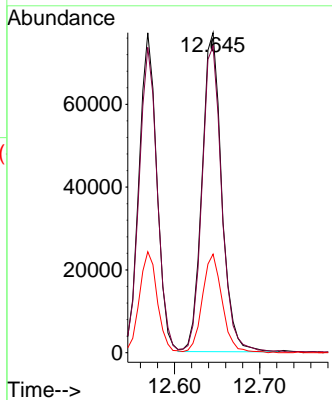
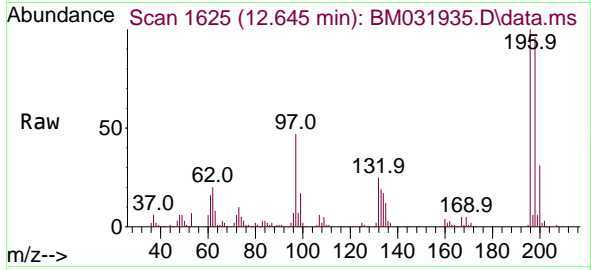




#42
 2,4,5-Trichlorophenol
 Concen: 22.727 ng/uI
 RT: 12.645 min Scan# 1625
 Delta R.T. 0.000 min
 Lab File: BM031935.D
 Acq: 28 Aug 2021 16:53

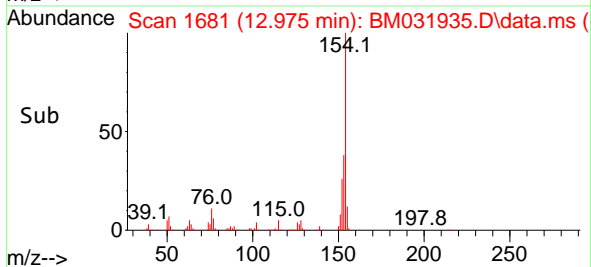
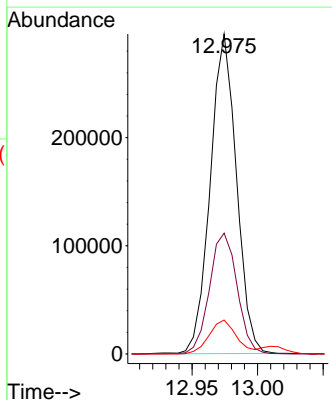
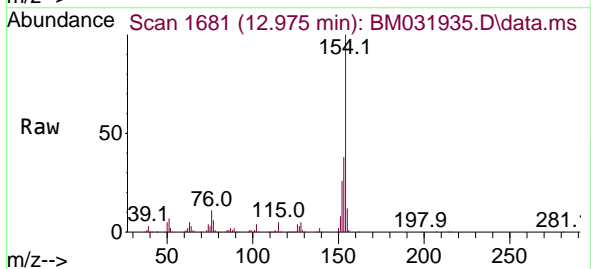
Instrument :
 BNA_M
ClientSampled :
 SSTD020017

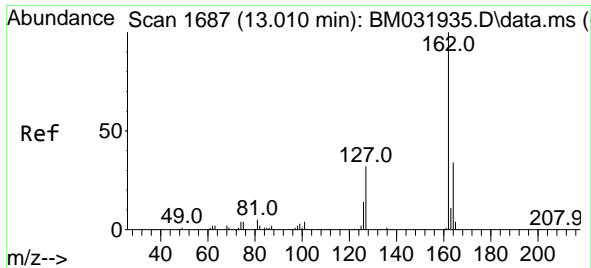
Tgt Ion	Resp	Lower	Upper
196	100		
198	95.7	76.1	114.1
200	30.8	25.4	38.2



#43
 1,1'-Biphenyl
 Concen: 20.928 ng/uI
 RT: 12.975 min Scan# 1681
 Delta R.T. 0.000 min
 Lab File: BM031935.D
 Acq: 28 Aug 2021 16:53

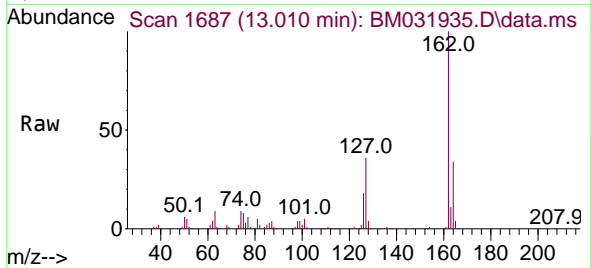
Tgt Ion	Resp	Lower	Upper
154	100		
153	37.7	32.3	48.5
76	10.6	10.6	15.8



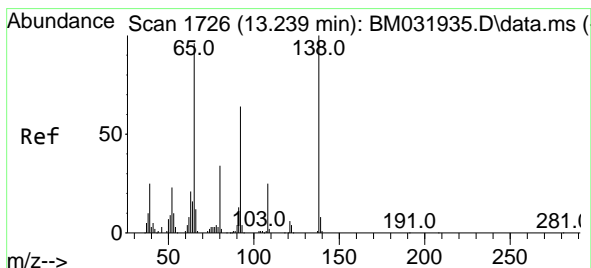
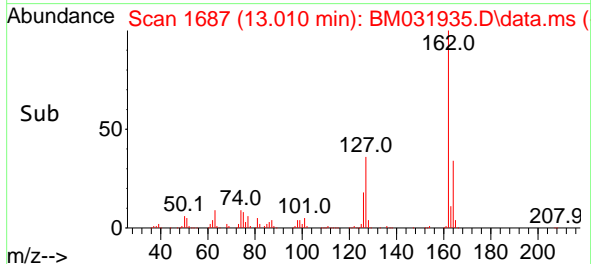
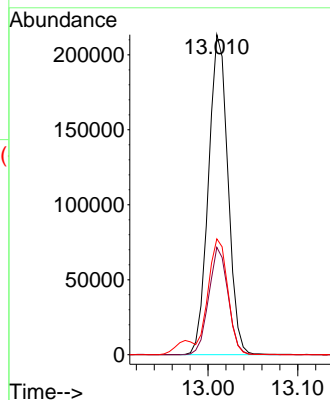


#44
 2-Chloronaphthalene
 Concen: 20.990 ng/uI
 RT: 13.010 min Scan# 1687
 Delta R.T. 0.000 min
 Lab File: BM031935.D
 Acq: 28 Aug 2021 16:53

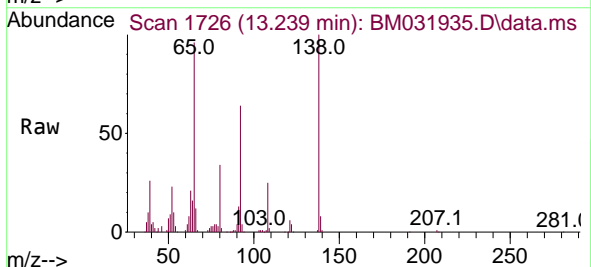
Instrument :
 BNA_M
 ClientSampled :
 SSTD020017



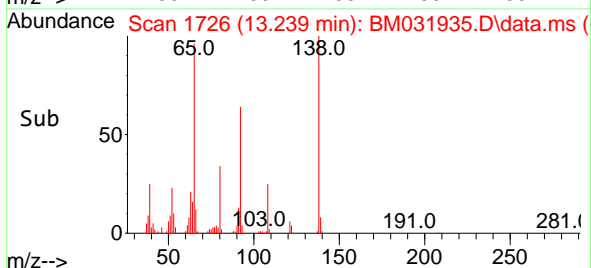
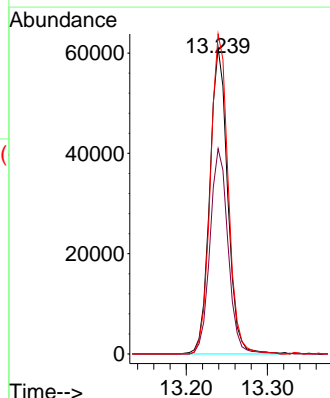
Tgt Ion:162 Resp: 321734
 Ion Ratio Lower Upper
 162 100
 164 33.6 26.2 39.4
 127 36.2 29.4 44.0

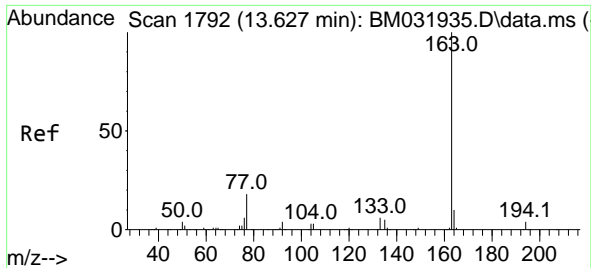


#45
 2-Nitroaniline
 Concen: 21.705 ng/uI
 RT: 13.239 min Scan# 1726
 Delta R.T. 0.000 min
 Lab File: BM031935.D
 Acq: 28 Aug 2021 16:53



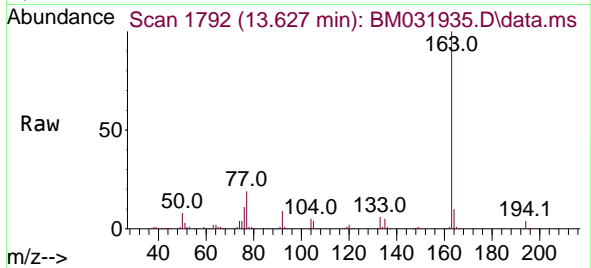
Tgt Ion: 65 Resp: 93483
 Ion Ratio Lower Upper
 65 100
 92 67.0 53.9 80.9
 138 104.5 83.3 124.9



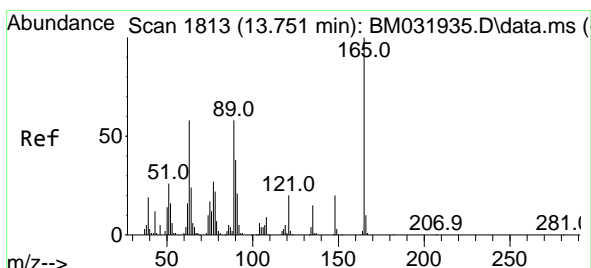
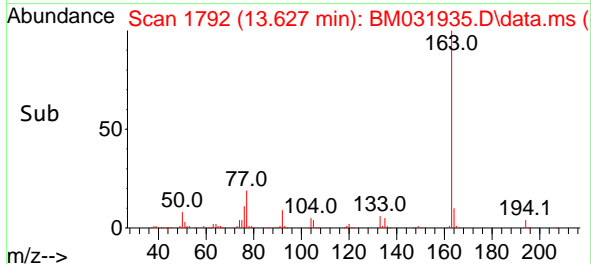
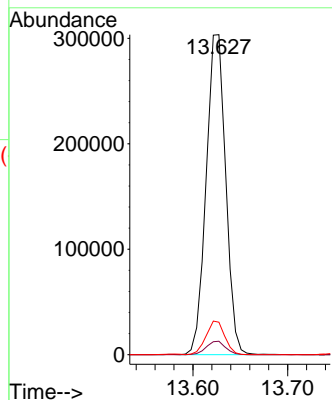


#47
 Dimethylphthalate
 Concen: 23.580 ng/uI
 RT: 13.627 min Scan# 1792
 Delta R.T. 0.000 min
 Lab File: BM031935.D
 Acq: 28 Aug 2021 16:53

Instrument :
 BNA_M
 ClientSampleId :
 SSTD020017

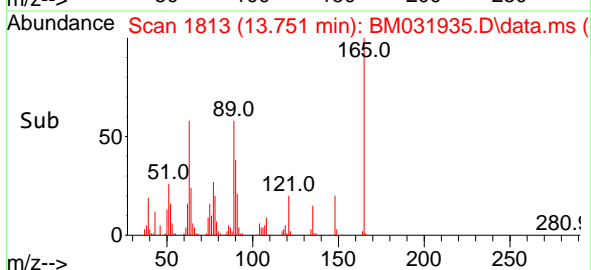
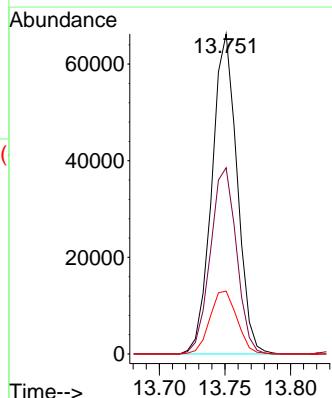
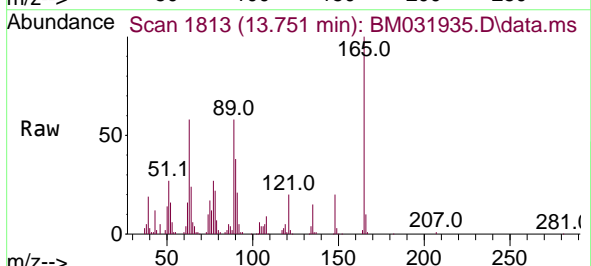


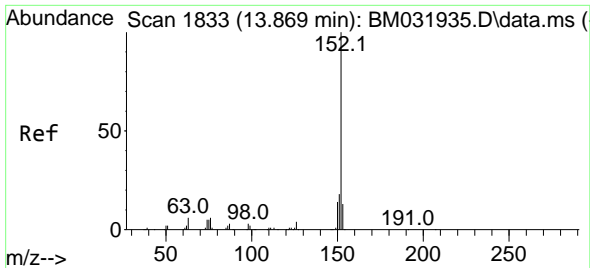
Tgt Ion:163 Resp: 434705
 Ion Ratio Lower Upper
 163 100
 194 4.2 3.2 4.8
 164 10.2 8.2 12.4



#48
 2,6-Dinitrotoluene
 Concen: 24.992 ng/uI
 RT: 13.751 min Scan# 1813
 Delta R.T. 0.000 min
 Lab File: BM031935.D
 Acq: 28 Aug 2021 16:53

Tgt Ion:165 Resp: 88738
 Ion Ratio Lower Upper
 165 100
 89 58.2 48.6 72.8
 121 19.6 18.1 27.1



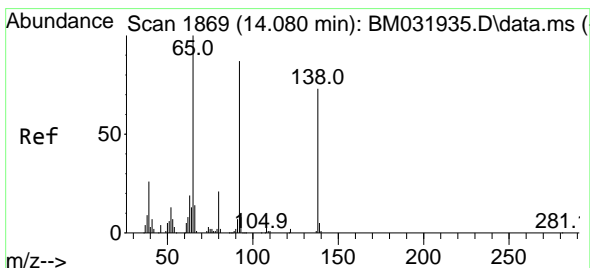
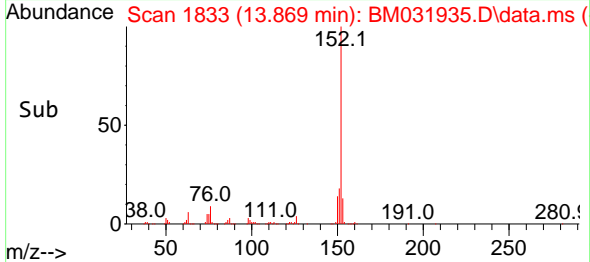
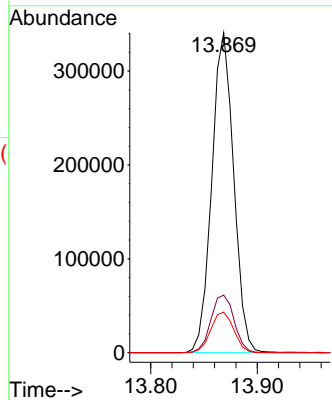
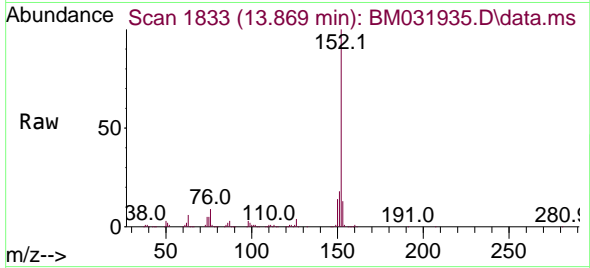


#50
 Acenaphthylene
 Concen: 21.942 ng/uI
 RT: 13.869 min Scan# 1833
 Delta R.T. 0.000 min
 Lab File: BM031935.D
 Acq: 28 Aug 2021 16:53

Instrument :
 BNA_M
 ClientSampleId :
 SSTD020017

Tgt Ion:152 Resp: 487250

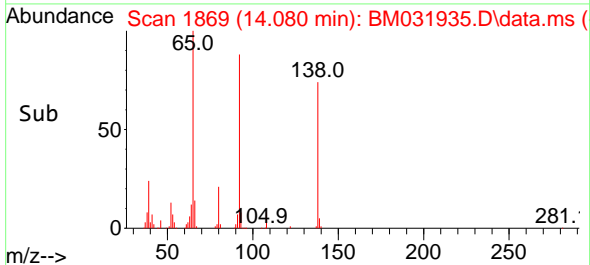
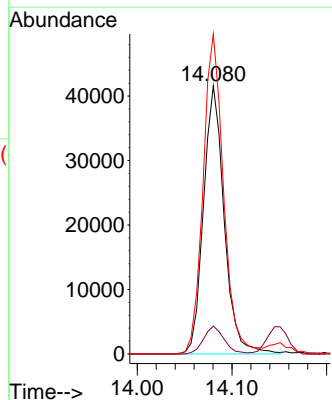
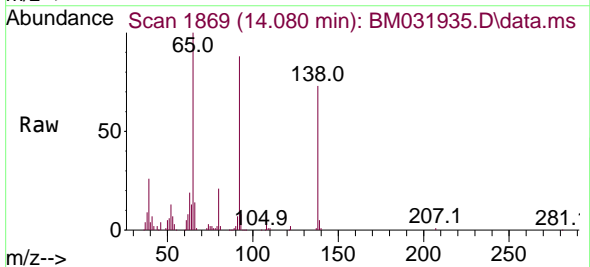
Ion	Ratio	Lower	Upper
152	100		
151	18.0	16.2	24.2
153	12.7	10.2	15.4

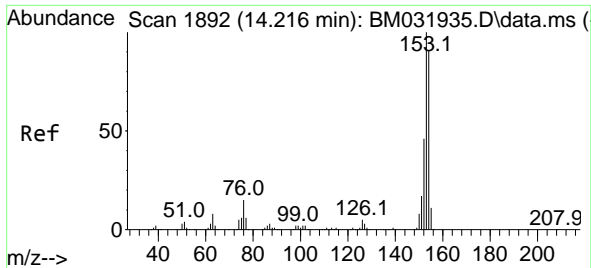


#51
 3-Nitroaniline
 Concen: 17.032 ng/uI
 RT: 14.080 min Scan# 1869
 Delta R.T. 0.000 min
 Lab File: BM031935.D
 Acq: 28 Aug 2021 16:53

Tgt Ion:138 Resp: 63183

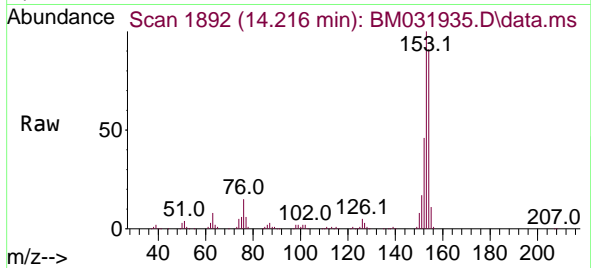
Ion	Ratio	Lower	Upper
138	100		
108	10.4	7.4	11.2
92	119.4	96.5	144.7



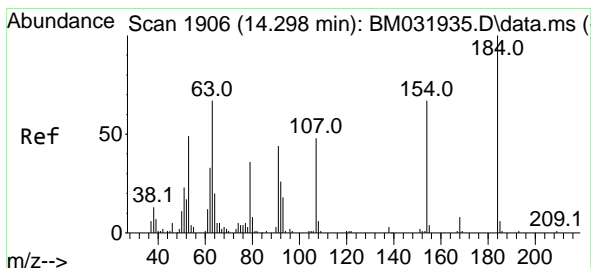
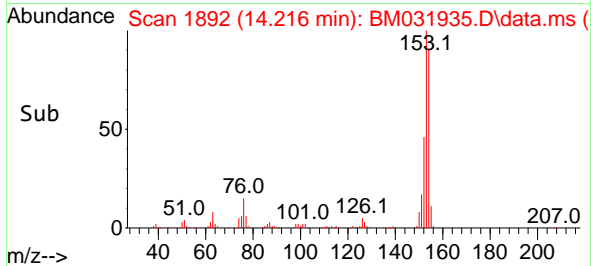
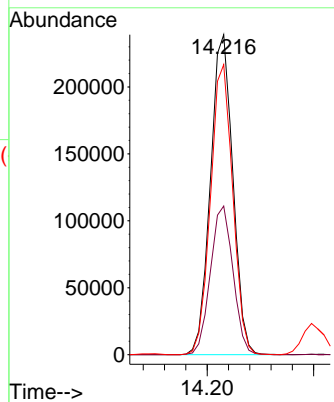


#52
 Acenaphthene
 Concen: 21.543 ng/uI
 RT: 14.216 min Scan# 1892
 Delta R.T. 0.000 min
 Lab File: BM031935.D
 Acq: 28 Aug 2021 16:53

Instrument :
 BNA_M
 ClientSampleId :
 SSTD020017

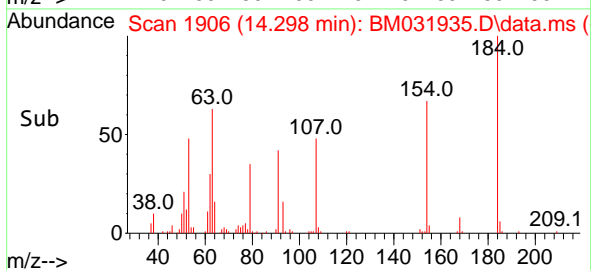
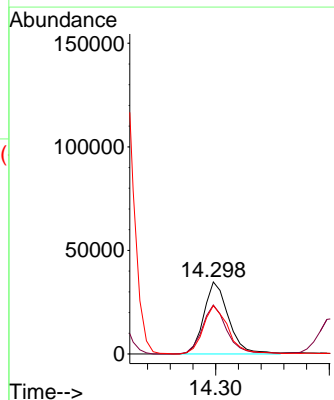
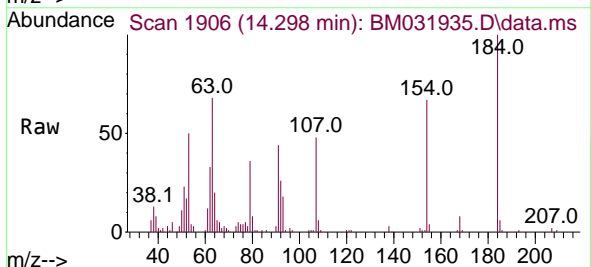


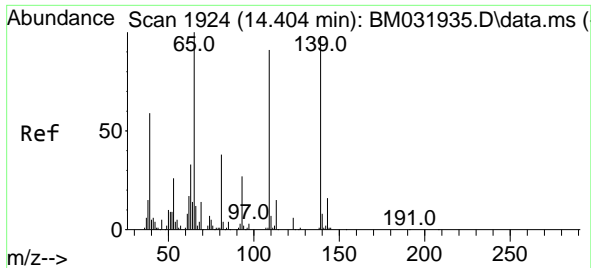
Tgt Ion:153 Resp: 348982
 Ion Ratio Lower Upper
 153 100
 152 46.5 37.4 56.2
 154 90.7 69.4 104.0



#53
 2,4-Dinitrophenol
 Concen: 24.723 ng/uI
 RT: 14.298 min Scan# 1906
 Delta R.T. 0.000 min
 Lab File: BM031935.D
 Acq: 28 Aug 2021 16:53

Tgt Ion:184 Resp: 52309
 Ion Ratio Lower Upper
 184 100
 63 68.0 56.9 85.3
 154 67.0 49.0 73.6

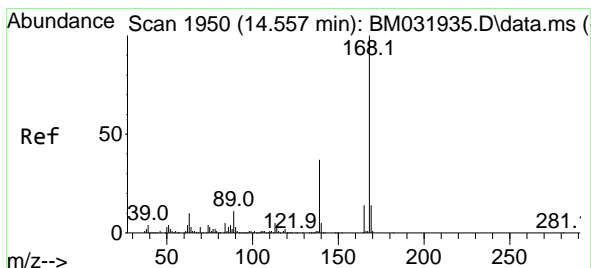
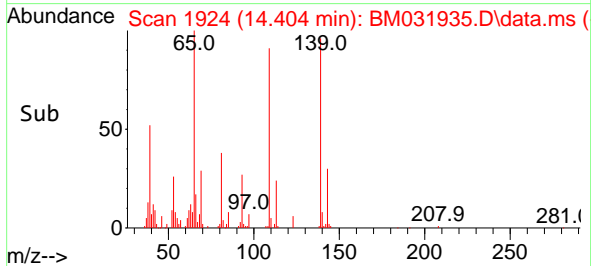
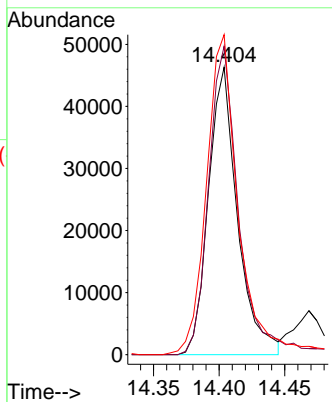
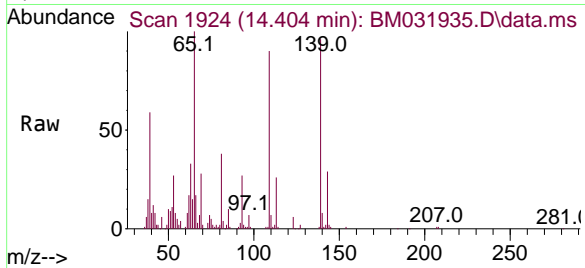




#55
 4-Nitrophenol
 Concen: 25.646 ng/uI
 RT: 14.404 min Scan# 1924
 Delta R.T. 0.000 min
 Lab File: BM031935.D
 Acq: 28 Aug 2021 16:53

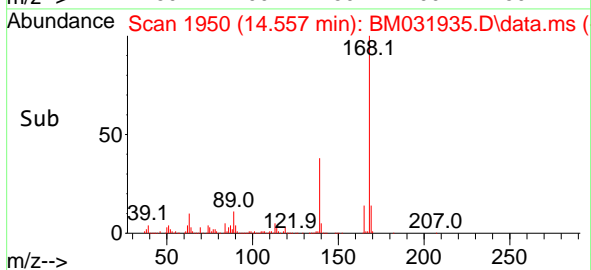
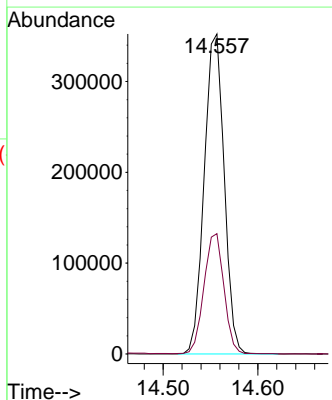
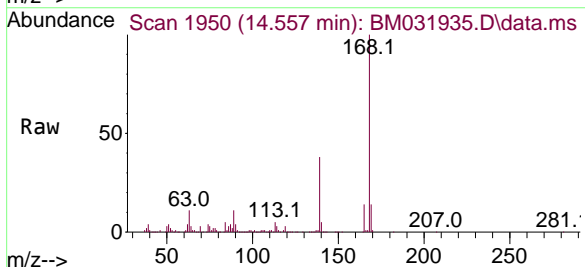
Instrument :
 BNA_M
 ClientSampleId :
 SSTD020017

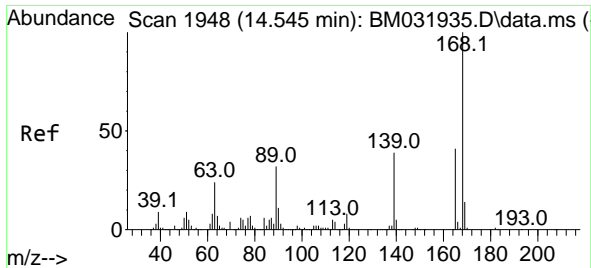
Tgt Ion	Resp	Lower	Upper
109	71286		
109	100		
139	107.3	100.3	150.5
65	111.3	104.6	156.8



#56
 Dibenzofuran
 Concen: 22.567 ng/uI
 RT: 14.557 min Scan# 1950
 Delta R.T. 0.000 min
 Lab File: BM031935.D
 Acq: 28 Aug 2021 16:53

Tgt Ion	Resp	Lower	Upper
168	514762		
168	100		
139	37.6	29.5	44.3

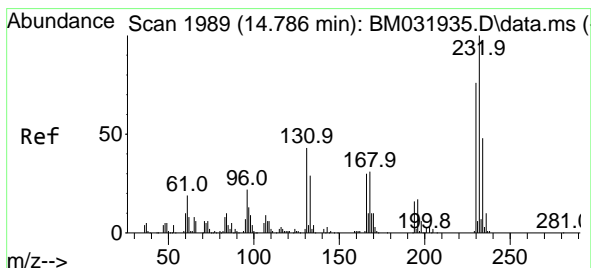
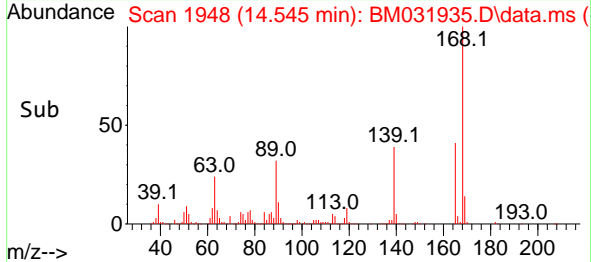
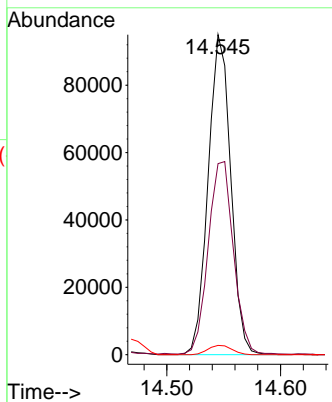
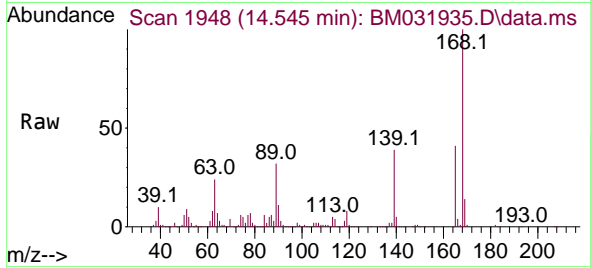




#57
 2,4-Dinitrotoluene
 Concen: 26.528 ng/ul
 RT: 14.545 min Scan# 1948
 Delta R.T. 0.000 min
 Lab File: BM031935.D
 Acq: 28 Aug 2021 16:53

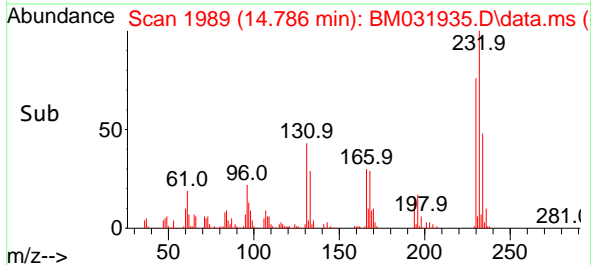
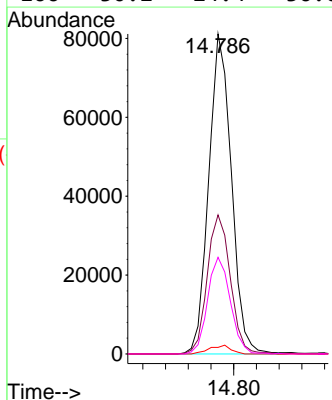
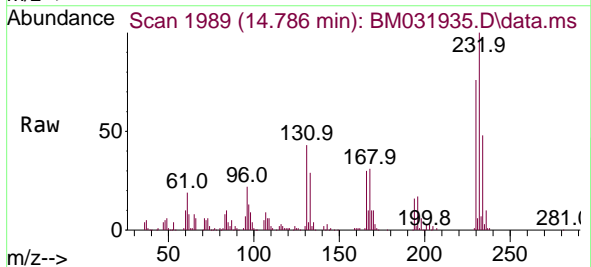
Instrument :
 BNA_M
 ClientSampleId :
 SSTD020017

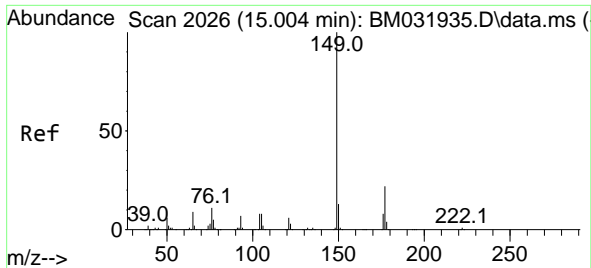
Tgt Ion:165 Resp: 131319
 Ion Ratio Lower Upper
 165 100
 63 59.7 37.6 56.4#
 182 2.9 1.8 2.8#



#58
 2,3,4,6-Tetrachlorophenol
 Concen: 24.814 ng/ul
 RT: 14.786 min Scan# 1989
 Delta R.T. 0.000 min
 Lab File: BM031935.D
 Acq: 28 Aug 2021 16:53

Tgt Ion:232 Resp: 112490
 Ion Ratio Lower Upper
 232 100
 131 43.5 35.0 52.6
 130 2.0 1.7 2.5
 166 30.2 24.4 36.6

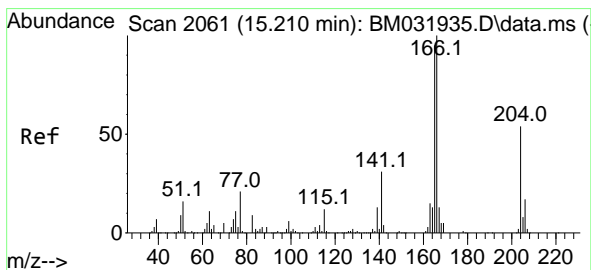
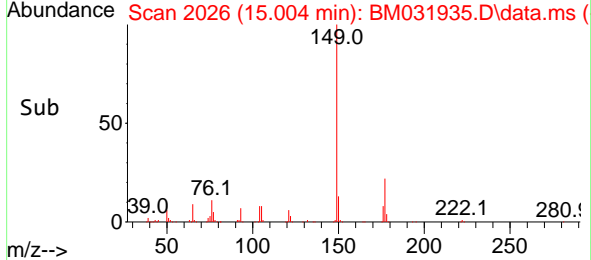
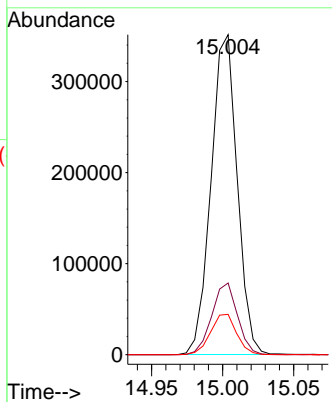
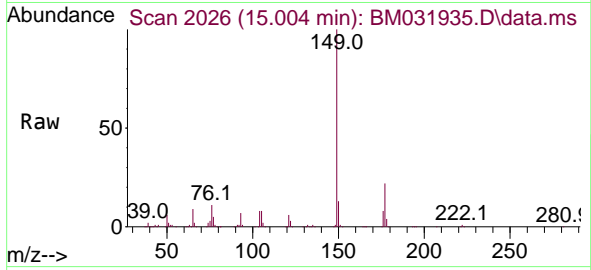




#59
 Diethylphthalate
 Concen: 24.577 ng/uI
 RT: 15.004 min Scan# 2026
 Delta R.T. 0.000 min
 Lab File: BM031935.D
 Acq: 28 Aug 2021 16:53

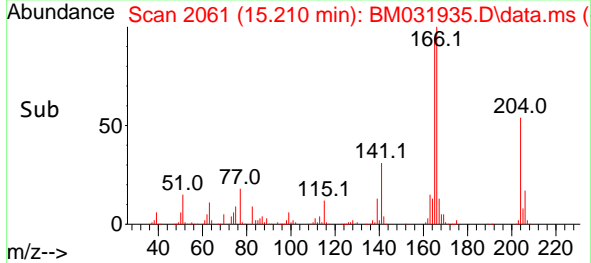
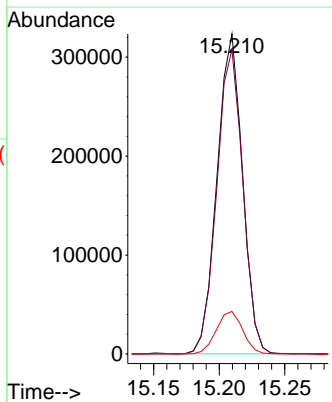
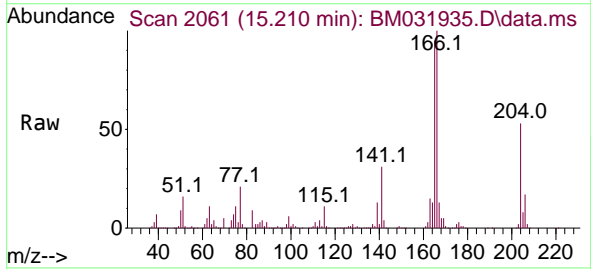
Instrument :
 BNA_M
ClientSampleId :
 SSTD020017

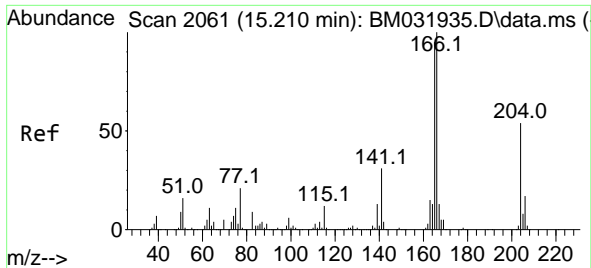
Tgt Ion	Resp	Lower	Upper
149	449687		
177	22.4	17.0	25.4
150	12.6	9.9	14.9



#61
 Fluorene
 Concen: 23.231 ng/uI
 RT: 15.210 min Scan# 2061
 Delta R.T. 0.000 min
 Lab File: BM031935.D
 Acq: 28 Aug 2021 16:53

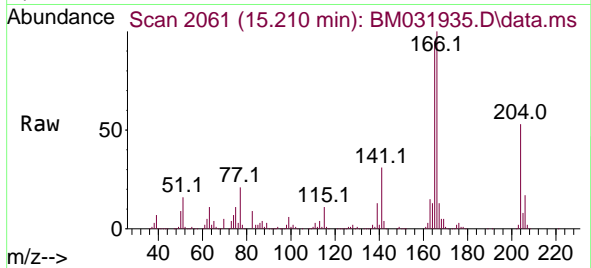
Tgt Ion	Resp	Lower	Upper
166	436458		
165	95.1	78.4	117.6
167	13.3	10.6	15.8



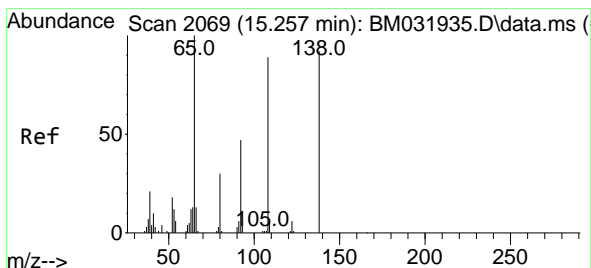
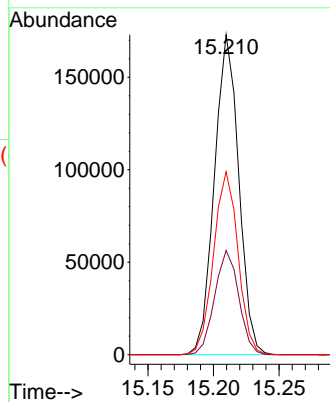
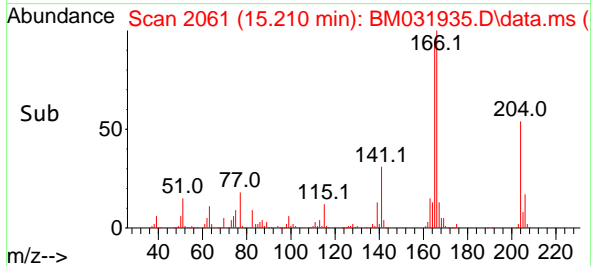


#62
 4-Chlorophenyl-phenylether
 Concen: 23.589 ng/ul
 RT: 15.210 min Scan# 2061
 Delta R.T. 0.000 min
 Lab File: BM031935.D
 Acq: 28 Aug 2021 16:53

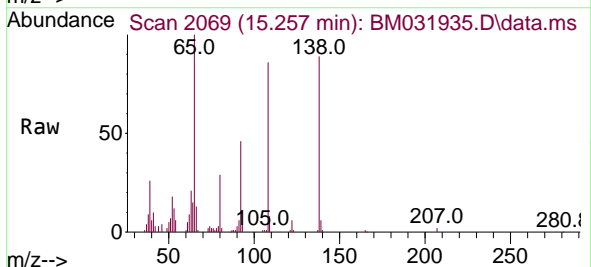
Instrument :
 BNA_M
 ClientSampled :
 SSTD020017



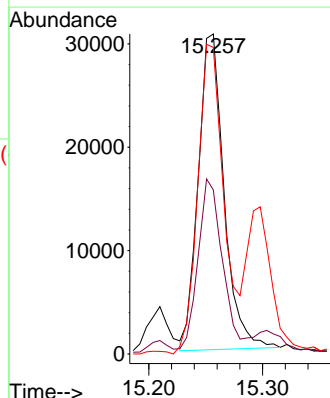
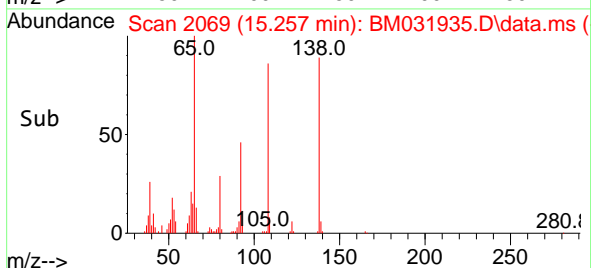
Tgt Ion:204 Resp: 223046
 Ion Ratio Lower Upper
 204 100
 206 32.5 26.0 39.0
 141 57.2 45.6 68.4

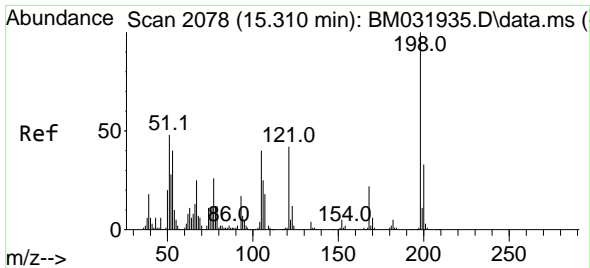


#63
 4-Nitroaniline
 Concen: 13.666 ng/ul
 RT: 15.257 min Scan# 2069
 Delta R.T. 0.000 min
 Lab File: BM031935.D
 Acq: 28 Aug 2021 16:53



Tgt Ion:138 Resp: 48292
 Ion Ratio Lower Upper
 138 100
 92 51.3 41.5 62.3
 108 95.8 61.4 92.2#

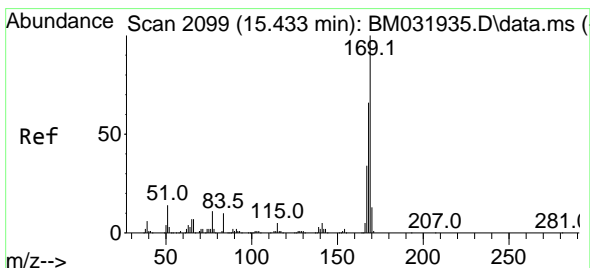
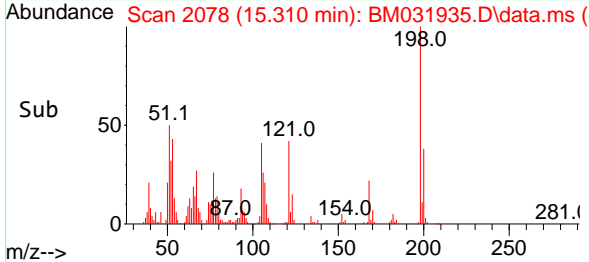
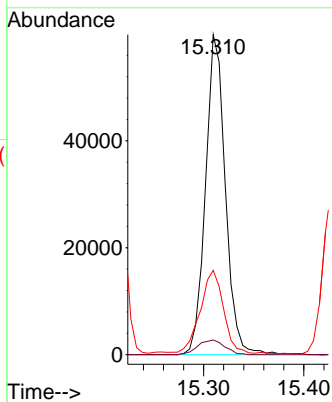
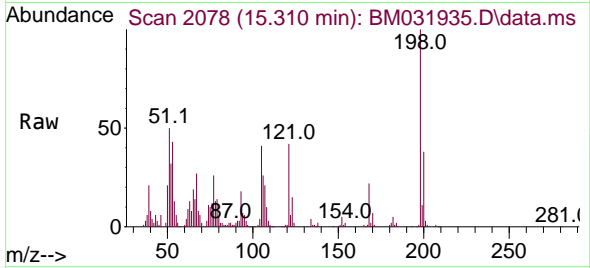




#66
 4,6-Dinitro-2-methylphenol
 Concen: 21.798 ng/ul
 RT: 15.310 min Scan# 2078
 Delta R.T. 0.000 min
 Lab File: BM031935.D
 Acq: 28 Aug 2021 16:53

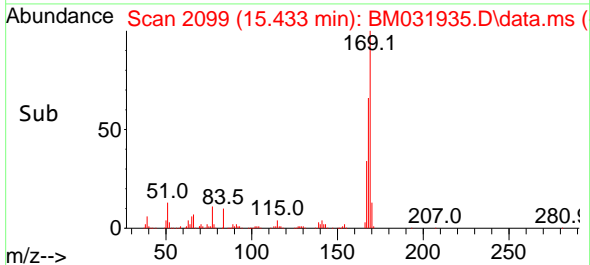
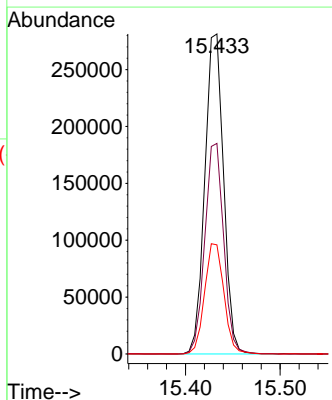
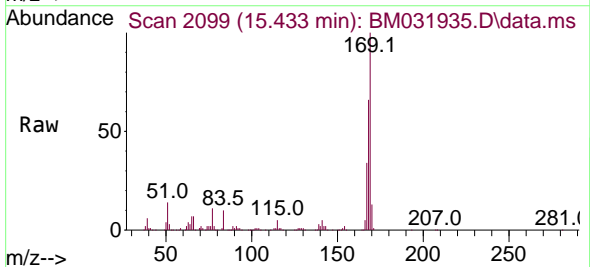
Instrument :
 BNA_M
 ClientSampleId :
 SSTD020017

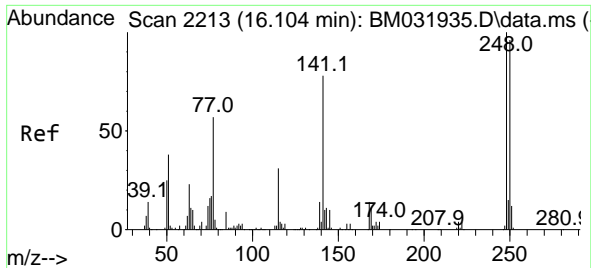
Tgt Ion	Resp	Lower	Upper
198	100		
182	4.6	3.8	5.6
77	26.3	20.1	30.1



#67
 N-Nitrosodiphenylamine
 Concen: 21.182 ng/ul
 RT: 15.433 min Scan# 2099
 Delta R.T. 0.000 min
 Lab File: BM031935.D
 Acq: 28 Aug 2021 16:53

Tgt Ion	Resp	Lower	Upper
169	100		
168	65.8	53.8	80.6
167	34.1	28.6	43.0

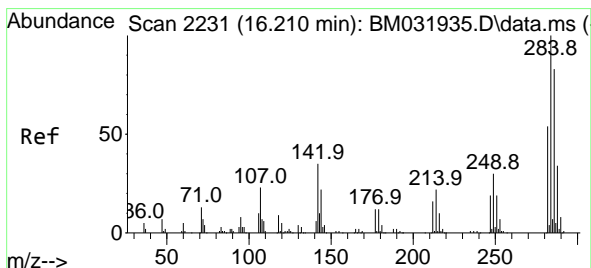
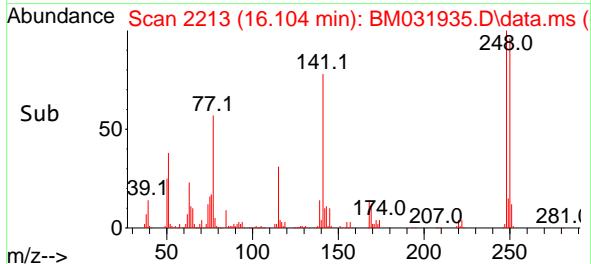
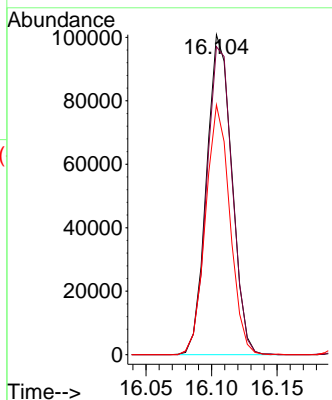
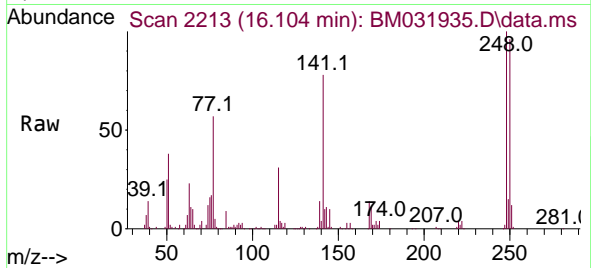




#68
 4-Bromophenyl-phenylether
 Concen: 20.994 ng/ul
 RT: 16.104 min Scan# 2213
 Delta R.T. 0.000 min
 Lab File: BM031935.D
 Acq: 28 Aug 2021 16:53

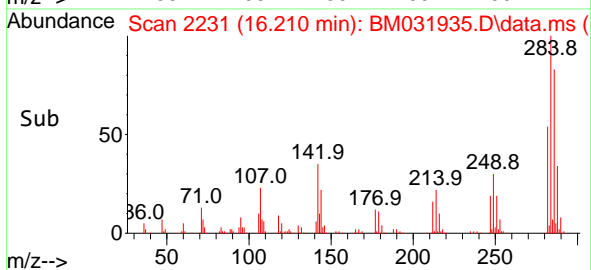
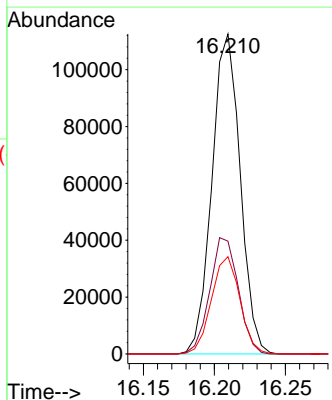
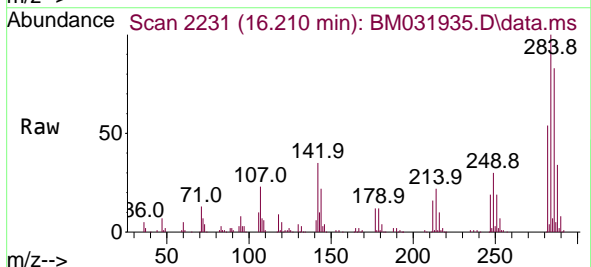
Instrument :
 BNA_M
 ClientSampled :
 SSTD020017

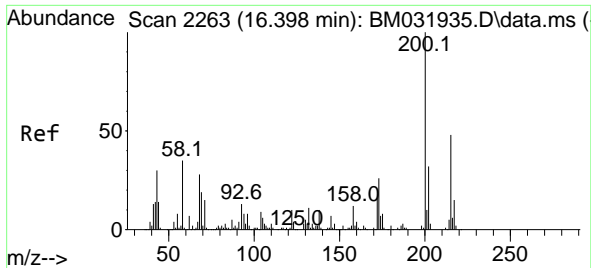
Tgt Ion	Resp	Lower	Upper
248	135065		
248	100		
250	96.3	78.6	118.0
141	78.1	56.2	84.2



#69
 Hexachlorobenzene
 Concen: 21.333 ng/ul
 RT: 16.210 min Scan# 2231
 Delta R.T. 0.000 min
 Lab File: BM031935.D
 Acq: 28 Aug 2021 16:53

Tgt Ion	Resp	Lower	Upper
284	155761		
284	100		
142	35.3	29.0	43.4
249	30.4	25.0	37.4

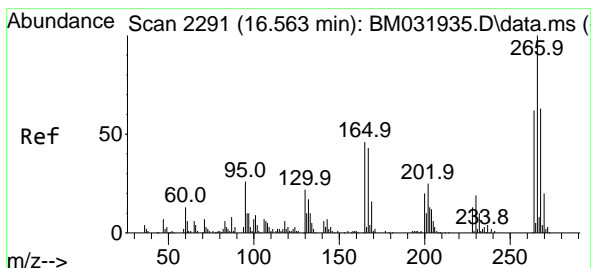
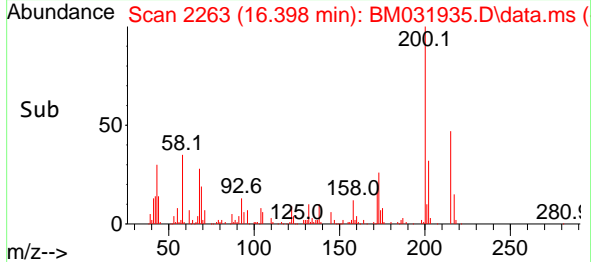
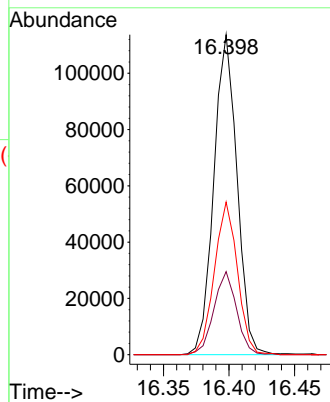
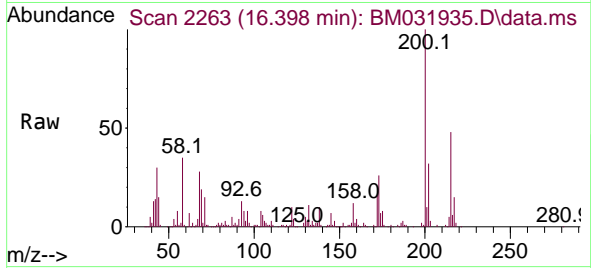




#70
 Atrazine
 Concen: 21.570 ng/uI
 RT: 16.398 min Scan# 2263
 Delta R.T. 0.000 min
 Lab File: BM031935.D
 Acq: 28 Aug 2021 16:53

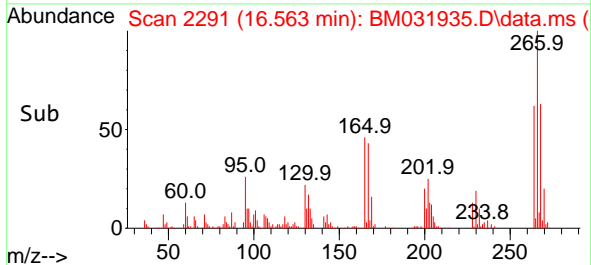
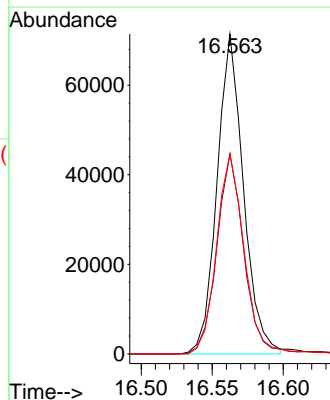
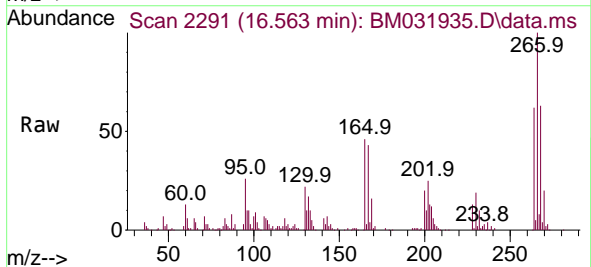
Instrument :
 BNA_M
 ClientSampled :
 SST020017

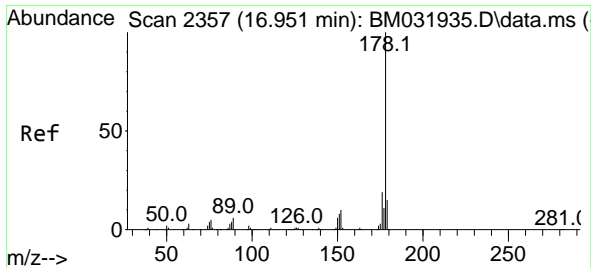
Tgt Ion:200 Resp: 139898
 Ion Ratio Lower Upper
 200 100
 173 25.9 18.7 28.1
 215 47.7 38.9 58.3



#71
 Pentachlorophenol
 Concen: 20.806 ng/uI
 RT: 16.563 min Scan# 2291
 Delta R.T. 0.000 min
 Lab File: BM031935.D
 Acq: 28 Aug 2021 16:53

Tgt Ion:266 Resp: 92316
 Ion Ratio Lower Upper
 266 100
 264 62.5 48.2 72.4
 268 62.6 51.6 77.4



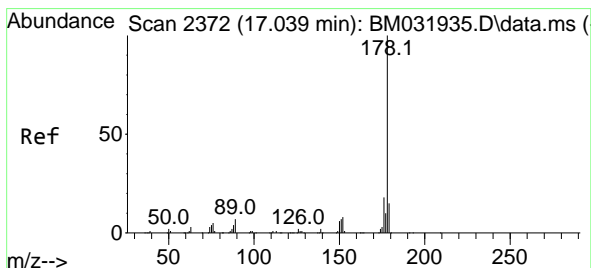
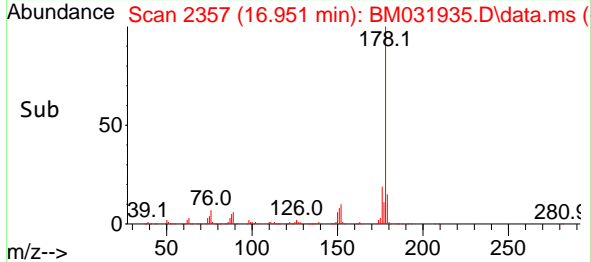
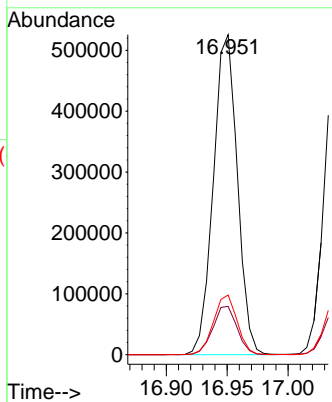
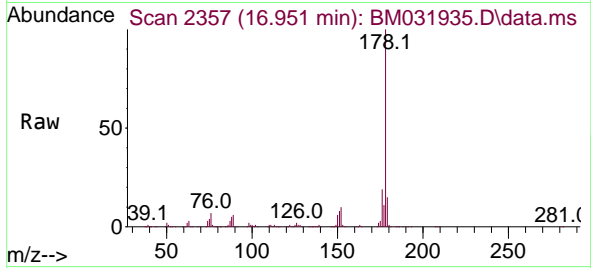


#72
 Phenanthrene
 Concen: 22.138 ng/u1
 RT: 16.951 min Scan# 2357
 Delta R.T. 0.000 min
 Lab File: BM031935.D
 Acq: 28 Aug 2021 16:53

Instrument :
 BNA_M
 ClientSampleId :
 SSTD020017

Tgt Ion:178 Resp: 721600

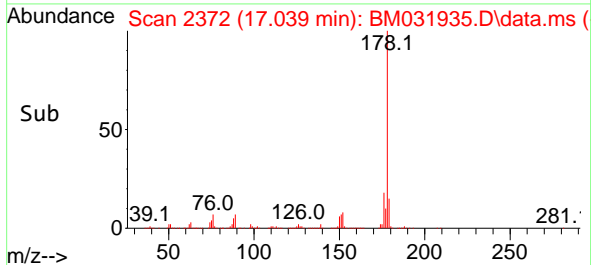
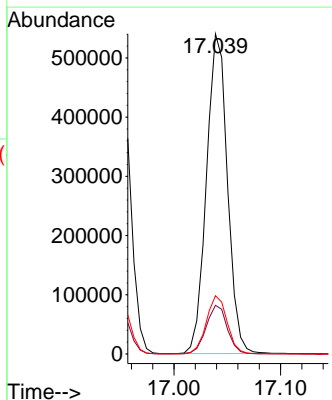
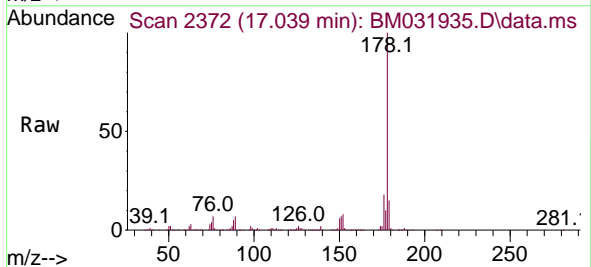
Ion	Ratio	Lower	Upper
178	100		
179	15.1	12.1	18.1
176	18.6	15.2	22.8

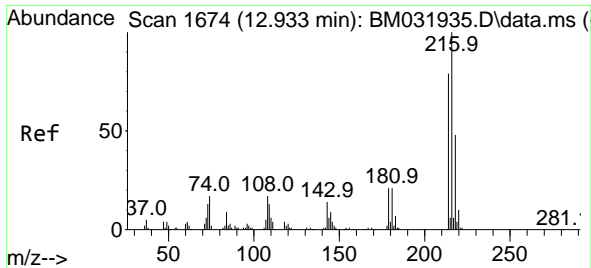


#74
 Anthracene
 Concen: 22.101 ng/u1
 RT: 17.039 min Scan# 2372
 Delta R.T. 0.000 min
 Lab File: BM031935.D
 Acq: 28 Aug 2021 16:53

Tgt Ion:178 Resp: 740158

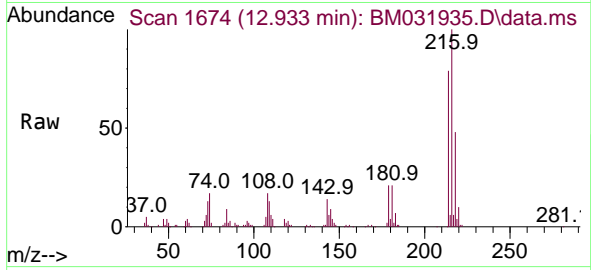
Ion	Ratio	Lower	Upper
178	100		
179	15.2	12.1	18.1
176	18.2	15.2	22.8





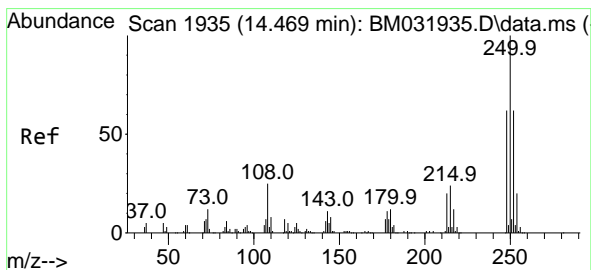
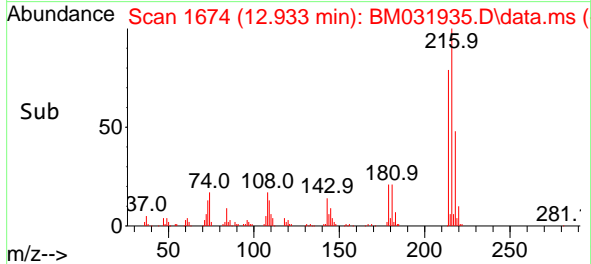
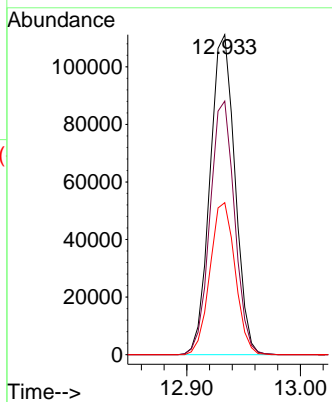
#75
 1,2,3,4-Tetrachlorobenzene
 Concen: 17.938 ng/uL
 RT: 12.933 min Scan# 1674
 Delta R.T. 0.000 min
 Lab File: BM031935.D
 Acq: 28 Aug 2021 16:53

Instrument :
 BNA_M
 ClientSampleId :
 SSTD020017

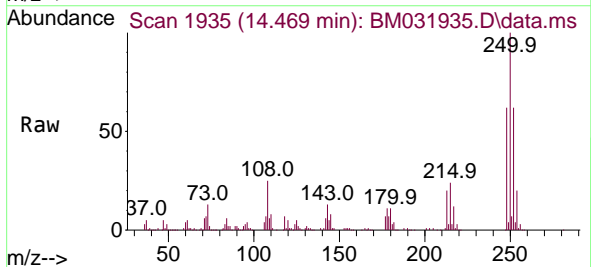


Tgt Ion:216 Resp: 169875

Ion	Ratio	Lower	Upper
216	100		
214	79.2	61.9	92.9
218	47.5	39.5	59.3

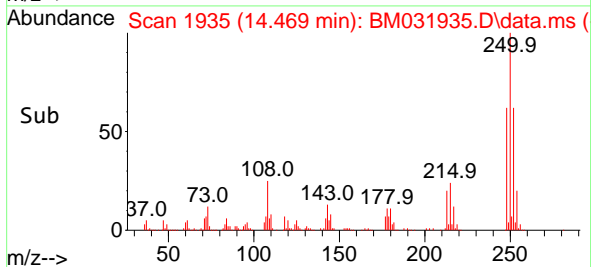
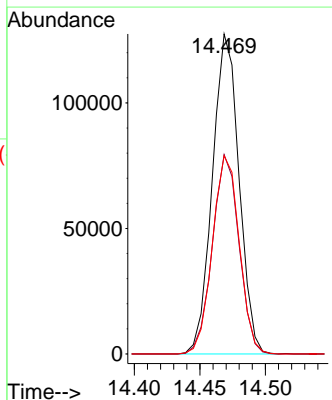


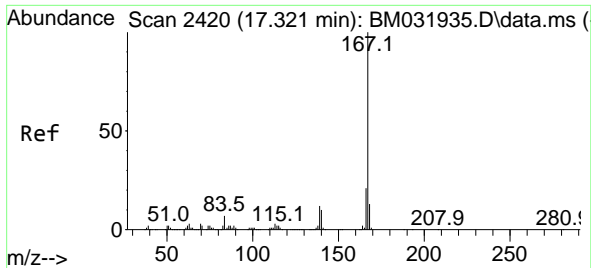
#76
 Pentachlorobenzene
 Concen: 19.392 ng/uL
 RT: 14.469 min Scan# 1935
 Delta R.T. 0.000 min
 Lab File: BM031935.D
 Acq: 28 Aug 2021 16:53



Tgt Ion:250 Resp: 179701

Ion	Ratio	Lower	Upper
250	100		
248	62.3	50.2	75.4
252	62.0	52.2	78.2

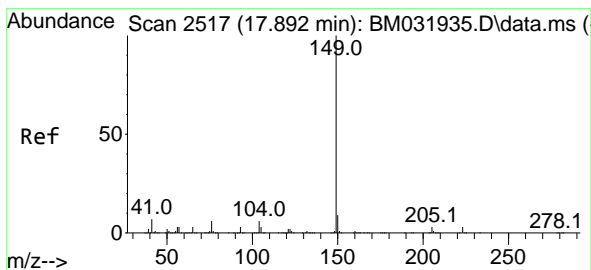
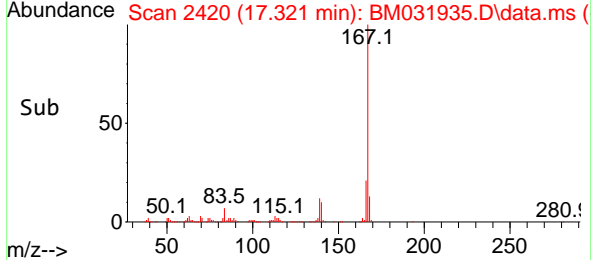
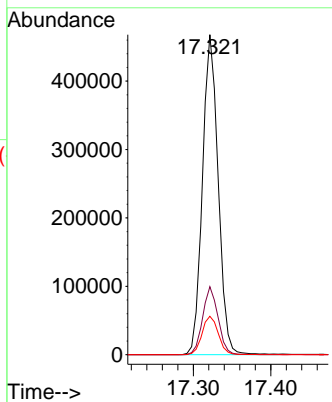
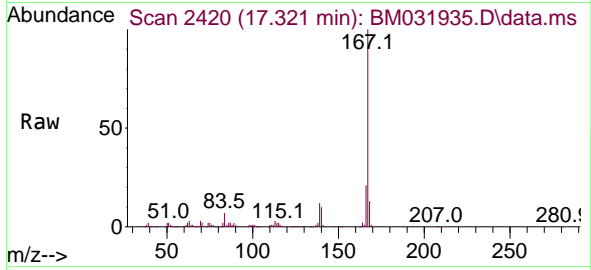




#77
 Carbazole
 Concen: 22.642 ng/uI
 RT: 17.321 min Scan# 2420
 Delta R.T. 0.000 min
 Lab File: BM031935.D
 Acq: 28 Aug 2021 16:53

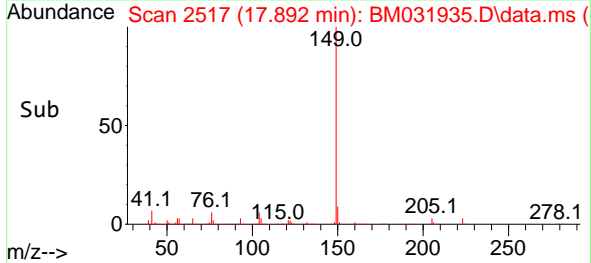
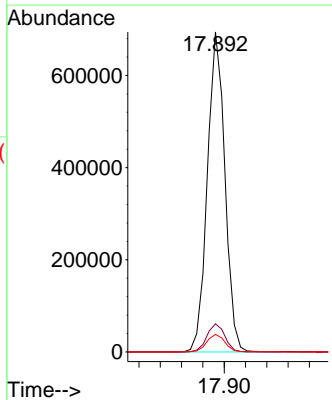
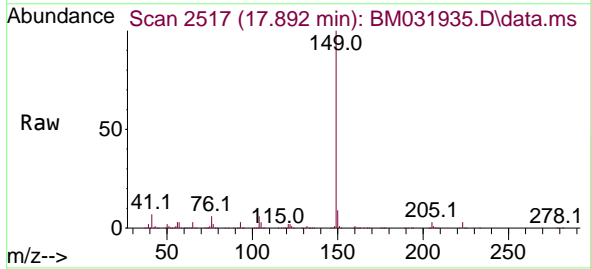
Instrument :
 BNA_M
ClientSampled :
 SSTD020017

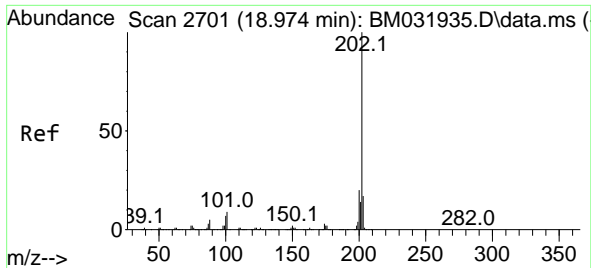
Tgt Ion	Resp	Lower	Upper
167	100		
166	21.3	17.0	25.6
139	12.0	9.9	14.9



#78
 Di-n-butylphthalate
 Concen: 23.771 ng/uI
 RT: 17.892 min Scan# 2517
 Delta R.T. 0.000 min
 Lab File: BM031935.D
 Acq: 28 Aug 2021 16:53

Tgt Ion	Resp	Lower	Upper
149	100		
150	8.8	7.3	10.9
104	5.5	4.1	6.1

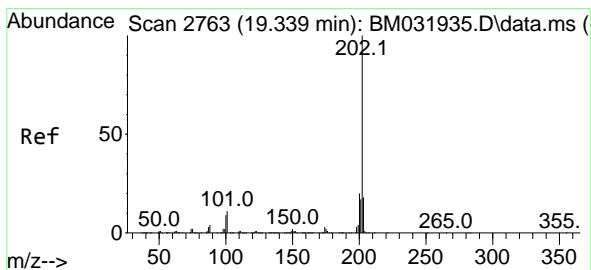
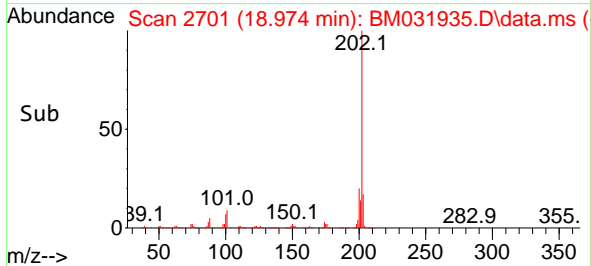
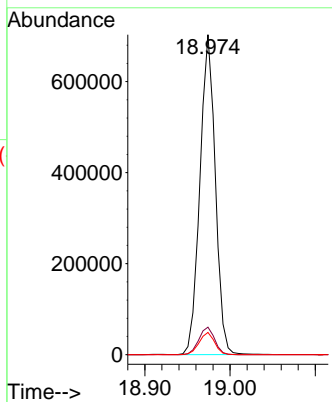
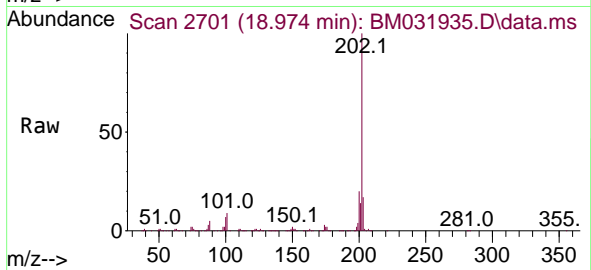




#80
 Fluoranthene
 Concen: 18.491 ng/u1
 RT: 18.974 min Scan# 2701
 Delta R.T. 0.000 min
 Lab File: BM031935.D
 Acq: 28 Aug 2021 16:53

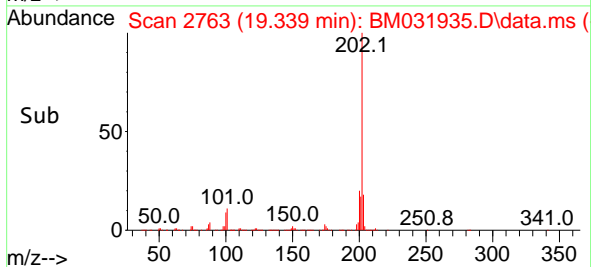
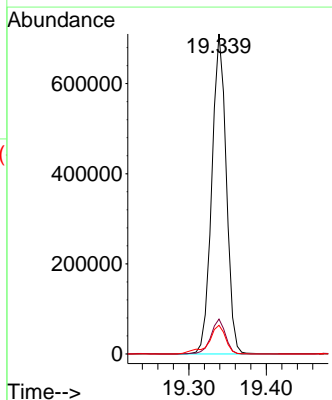
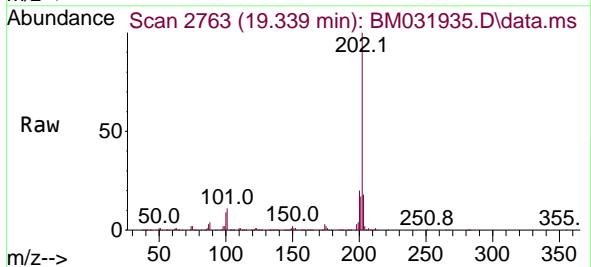
Instrument :
 BNA_M
 ClientSampleId :
 SSTD020017

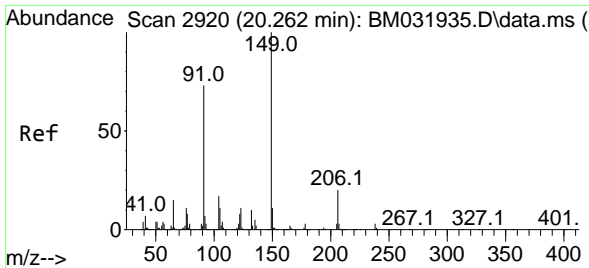
Tgt Ion	Resp	Lower	Upper
202	100		
101	8.6	8.8	13.2#
100	6.9	6.8	10.2



#82
 Pyrene
 Concen: 18.587 ng/u1
 RT: 19.339 min Scan# 2763
 Delta R.T. 0.000 min
 Lab File: BM031935.D
 Acq: 28 Aug 2021 16:53

Tgt Ion	Resp	Lower	Upper
202	100		
101	10.9	10.0	15.0
100	9.0	8.5	12.7

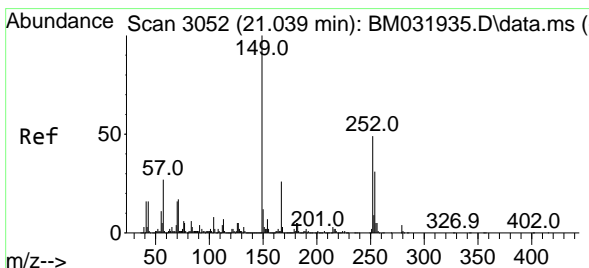
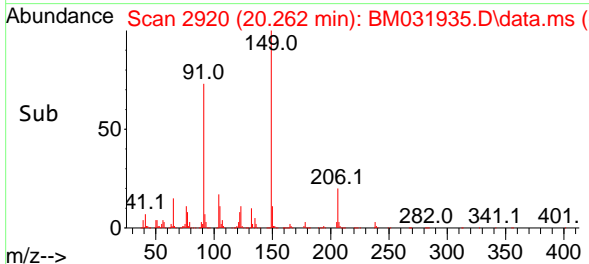
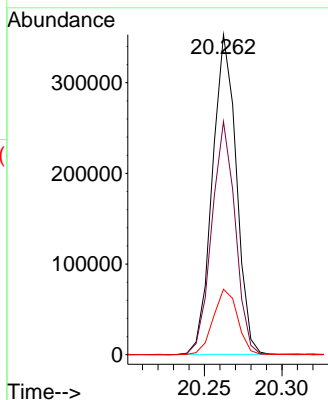
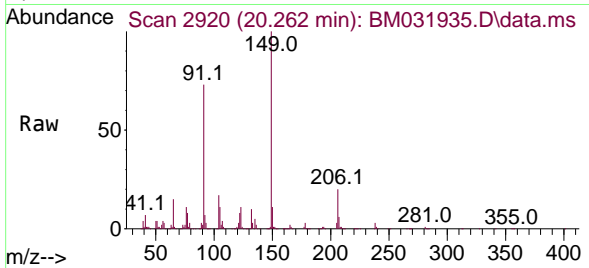




#83
 Butylbenzylphthalate
 Concen: 22.384 ng/ul
 RT: 20.262 min Scan# 2920
 Delta R.T. 0.000 min
 Lab File: BM031935.D
 Acq: 28 Aug 2021 16:53

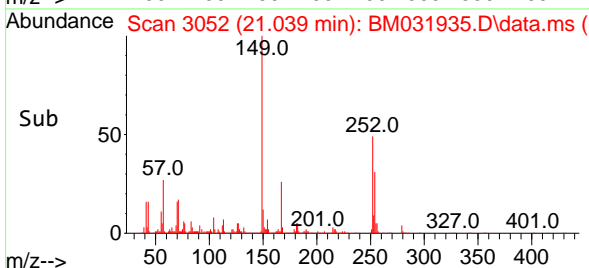
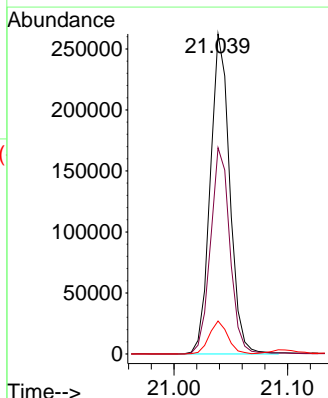
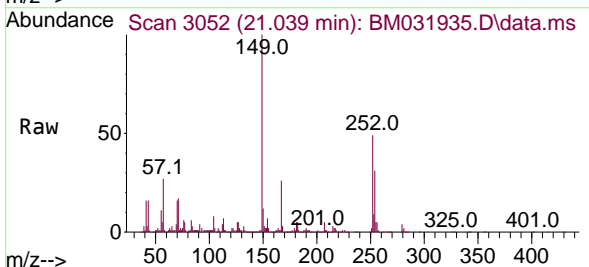
Instrument :
 BNA_M
 ClientSampled :
 SSTD020017

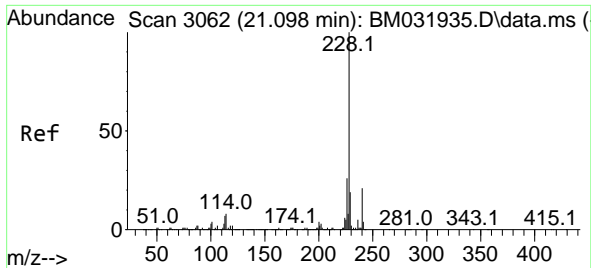
Tgt Ion:149 Resp: 378930
 Ion Ratio Lower Upper
 149 100
 91 72.9 57.4 86.2
 206 20.5 15.9 23.9



#84
 3,3'-Dichlorobenzidine
 Concen: 24.311 ng/ul
 RT: 21.039 min Scan# 3052
 Delta R.T. 0.000 min
 Lab File: BM031935.D
 Acq: 28 Aug 2021 16:53

Tgt Ion:252 Resp: 311707
 Ion Ratio Lower Upper
 252 100
 254 64.5 49.9 74.9
 126 10.3 8.9 13.3

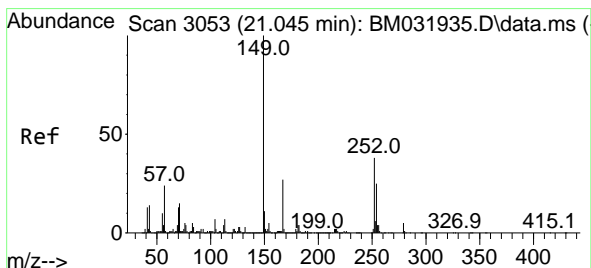
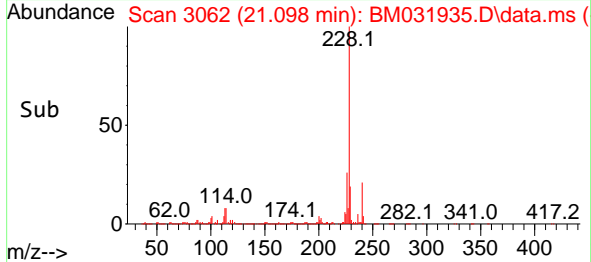
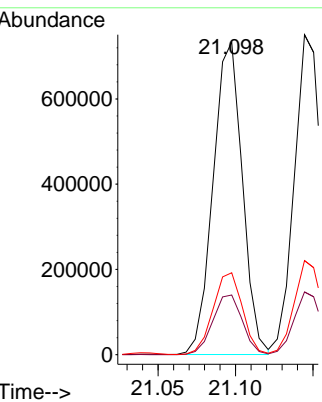
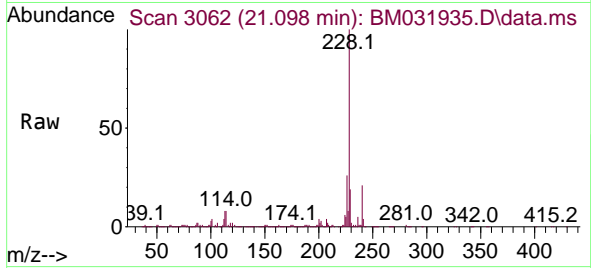




#85
 Benzo(a)anthracene
 Concen: 21.881 ng/ul
 RT: 21.098 min Scan# 3062
 Delta R.T. 0.000 min
 Lab File: BM031935.D
 Acq: 28 Aug 2021 16:53

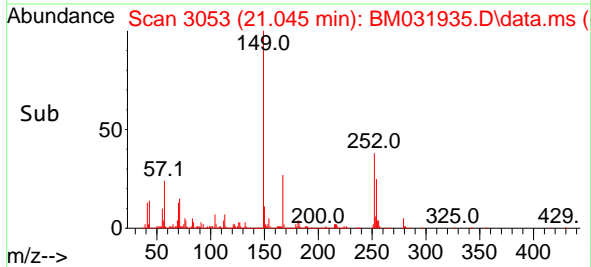
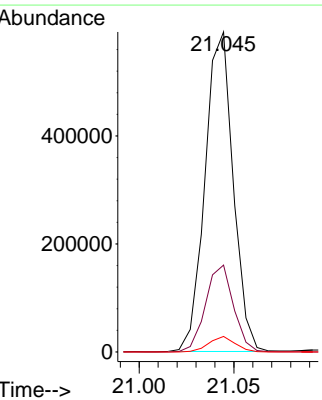
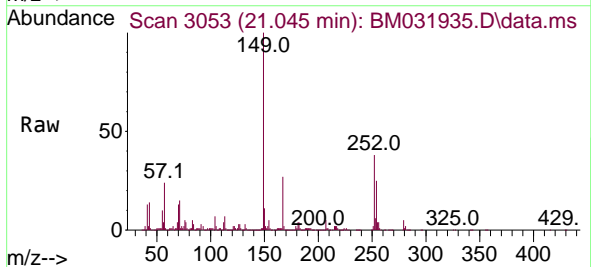
Instrument :
 BNA_M
 ClientSampled :
 SSTD020017

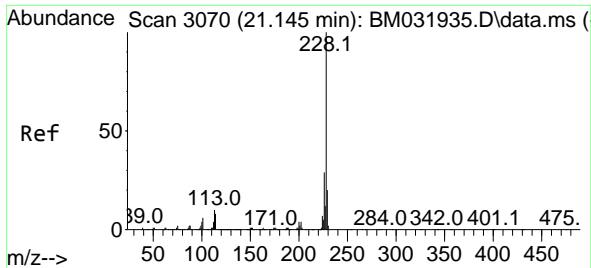
Tgt Ion	Resp	Lower	Upper
228	100		
229	19.1	16.0	24.0
226	26.2	22.2	33.2



#86
 Bis(2-ethylhexyl)phthalate
 Concen: 24.530 ng/ul
 RT: 21.045 min Scan# 3053
 Delta R.T. 0.000 min
 Lab File: BM031935.D
 Acq: 28 Aug 2021 16:53

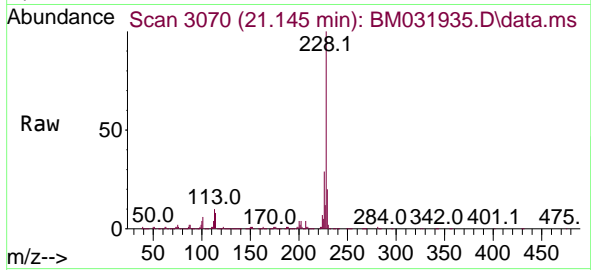
Tgt Ion	Resp	Lower	Upper
149	100		
167	27.2	20.7	31.1
279	4.8	3.0	4.4#



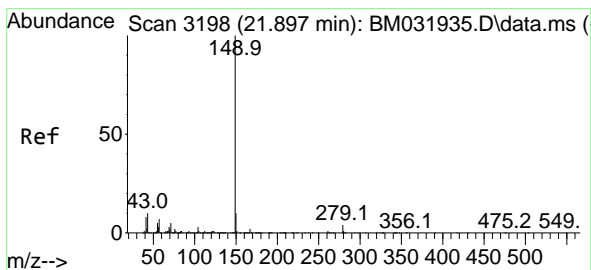
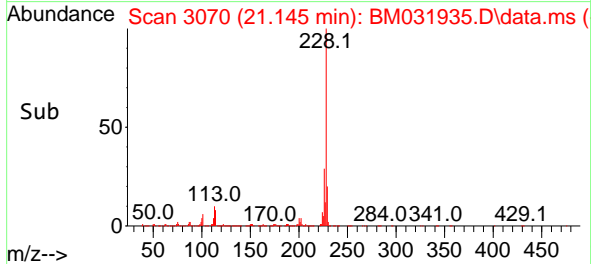
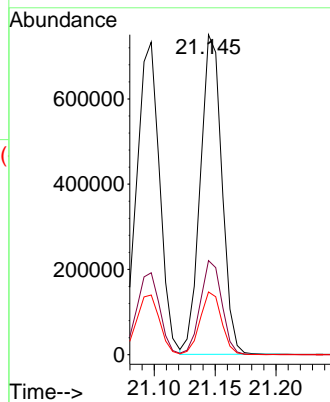


#87
 Chrysene
 Concen: 21.344 ng/ul
 RT: 21.145 min Scan# 3070
 Delta R.T. 0.000 min
 Lab File: BM031935.D
 Acq: 28 Aug 2021 16:53

Instrument :
 BNA_M
 ClientSampled :
 SSTD020017

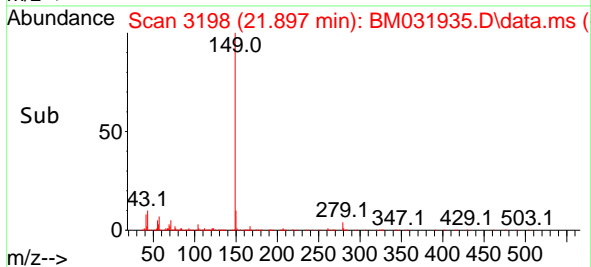
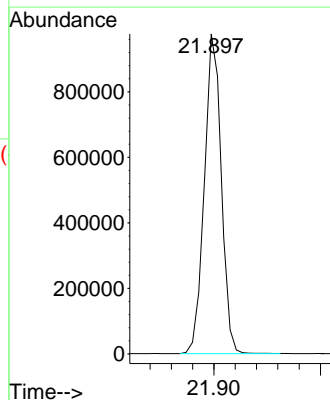
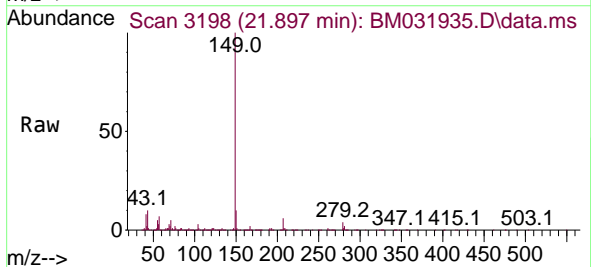


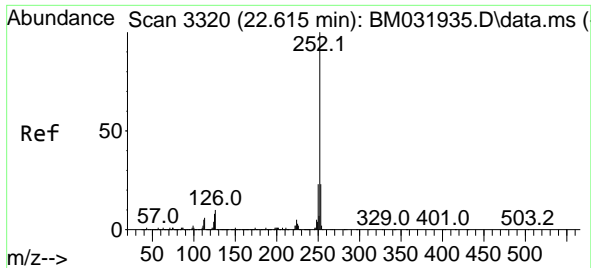
Tgt Ion:228 Resp: 922592
 Ion Ratio Lower Upper
 228 100
 226 29.4 23.6 35.4
 229 19.6 15.9 23.9



#89
 Di-n-octyl phthalate
 Concen: 22.690 ng/ul
 RT: 21.897 min Scan# 3198
 Delta R.T. 0.000 min
 Lab File: BM031935.D
 Acq: 28 Aug 2021 16:53

Tgt Ion:149 Resp: 1076812



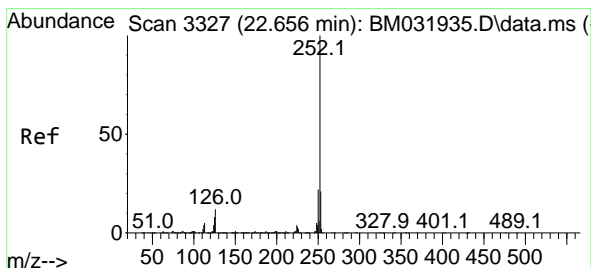
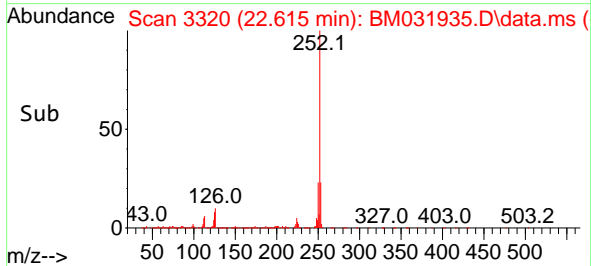
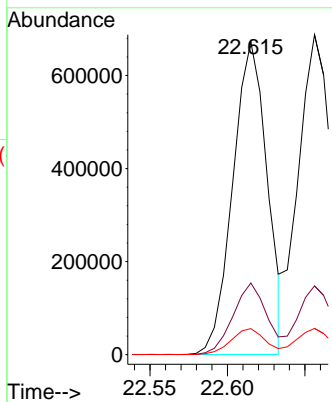
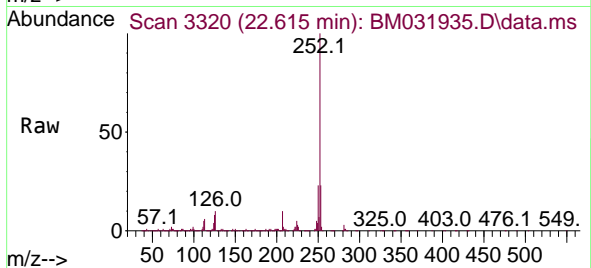


#90
 Benzo(b)fluoranthene
 Concen: 21.013 ng/u1
 RT: 22.615 min Scan# 3320
 Delta R.T. 0.000 min
 Lab File: BM031935.D
 Acq: 28 Aug 2021 16:53

Instrument :
 BNA_M
 ClientSampled :
 SSTD020017

Tgt Ion:252 Resp: 1034384

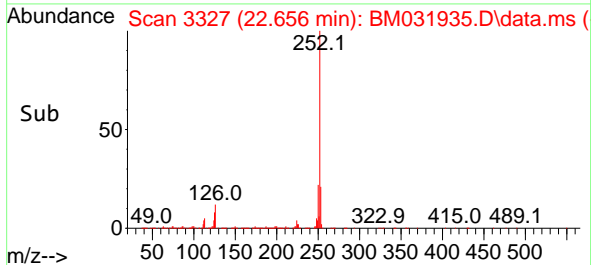
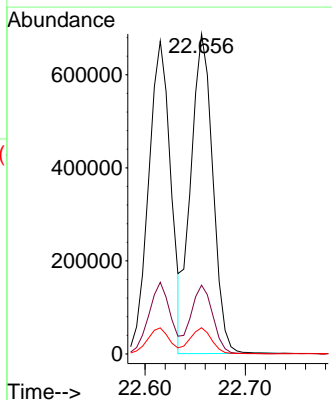
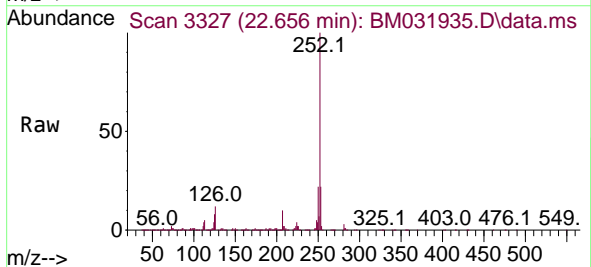
Ion	Ratio	Lower	Upper
252	100		
253	22.9	17.8	26.6
125	8.3	7.7	11.5

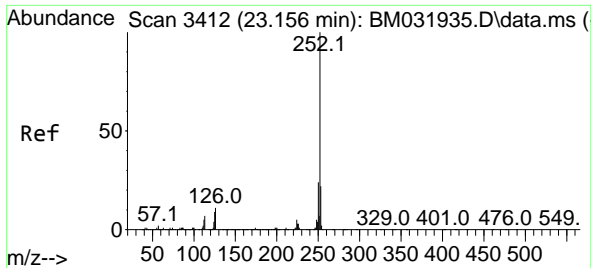


#91
 Benzo(k)fluoranthene
 Concen: 21.929 ng/u1
 RT: 22.656 min Scan# 3327
 Delta R.T. 0.000 min
 Lab File: BM031935.D
 Acq: 28 Aug 2021 16:53

Tgt Ion:252 Resp: 1049249

Ion	Ratio	Lower	Upper
252	100		
253	21.5	17.4	26.2
125	8.2	7.9	11.9

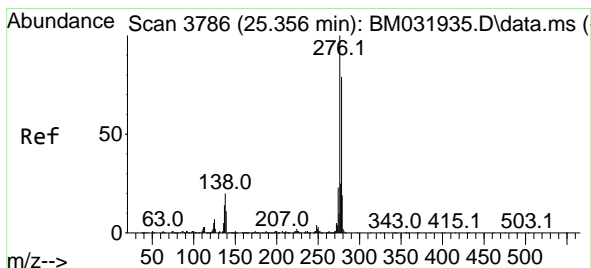
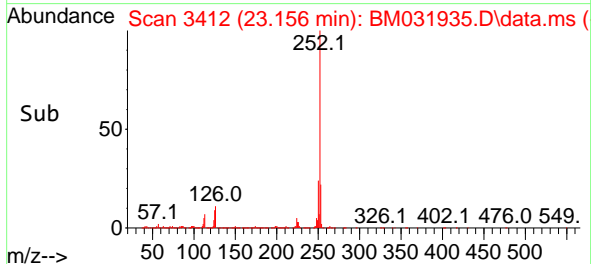
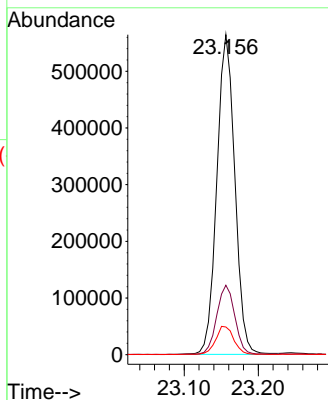
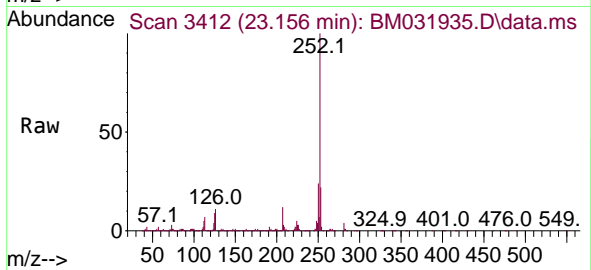




#93
 Benzo(a)pyrene
 Concen: 21.852 ng/u1
 RT: 23.156 min Scan# 3412
 Delta R.T. 0.000 min
 Lab File: BM031935.D
 Acq: 28 Aug 2021 16:53

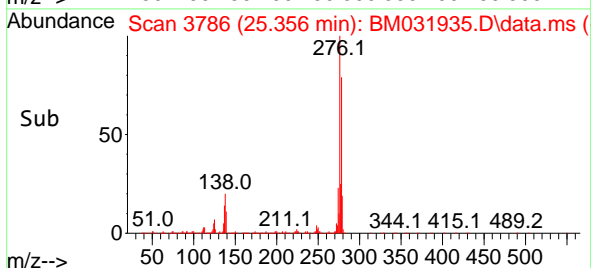
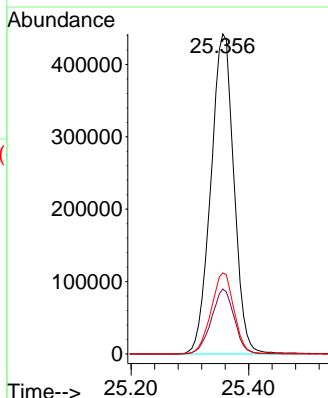
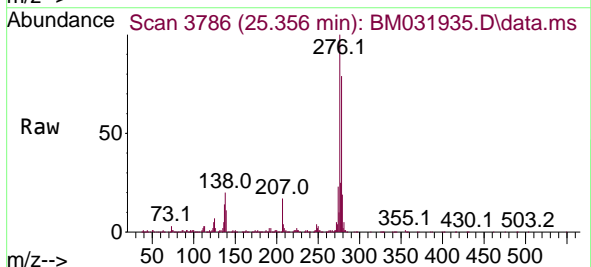
Instrument :
 BNA_M
 ClientSampled :
 SSTD020017

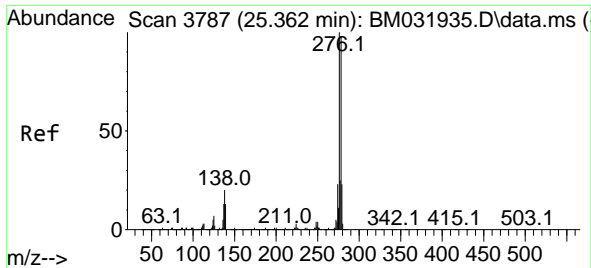
Tgt Ion	Resp	Lower	Upper
252	100		
253	21.7	17.5	26.3
125	8.7	8.6	13.0



#94
 Indeno(1,2,3-cd)pyrene
 Concen: 22.227 ng/u1
 RT: 25.356 min Scan# 3786
 Delta R.T. 0.000 min
 Lab File: BM031935.D
 Acq: 28 Aug 2021 16:53

Tgt Ion	Resp	Lower	Upper
276	100		
138	20.3	19.5	29.3
277	25.3	19.6	29.4

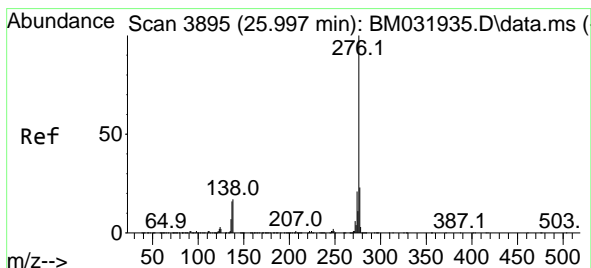
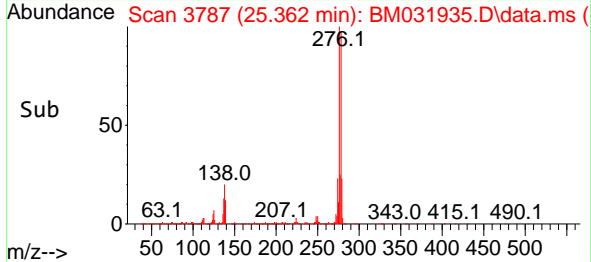
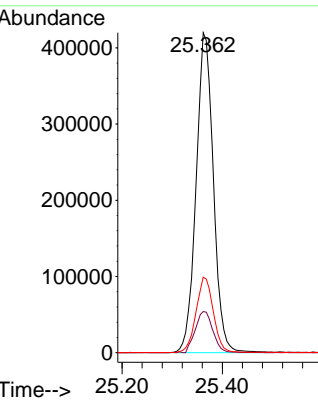
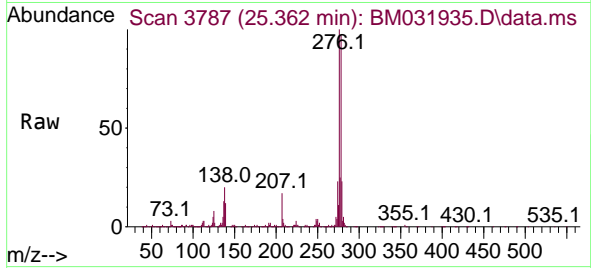




#95
 Dibenzo(a,h)anthracene
 Concen: 22.155 ng/ul
 RT: 25.362 min Scan# 3787
 Delta R.T. 0.000 min
 Lab File: BM031935.D
 Acq: 28 Aug 2021 16:53

Instrument :
 BNA_M
 ClientSampled :
 SSTD020017

Tgt Ion:278 Resp: 1006372
 Ion Ratio Lower Upper
 278 100
 139 12.8 12.8 19.2
 279 23.6 19.1 28.7



#96
 Benzo(g,h,i)perylene
 Concen: 22.879 ng/ul
 RT: 25.997 min Scan# 3895
 Delta R.T. 0.000 min
 Lab File: BM031935.D
 Acq: 28 Aug 2021 16:53

Tgt Ion:276 Resp: 993756
 Ion Ratio Lower Upper
 276 100
 138 16.5 16.5 24.7
 277 23.3 18.5 27.7

