

Data Path : Z:\svoasrv\HPCHEM1\BNA_M\Data\BM082821\
 Data File : BM031938.D
 Acq On : 28 Aug 2021 18:42
 Operator : CG/JU
 Sample : SSTD16023
 Misc :
 ALS Vial : 7 Sample Multiplier: 1

Instrument :
 BNA_M
 ClientSampled :

Quant Time: Aug 28 23:56:27 2021
 Quant Method : Z:\SVOASRV\HPCHEM1\BNA_M\METHODS\SFAM-EPA-BM082821.M
 Quant Title : SVOA CALIBRATION
 QLast Update : Sat Aug 28 23:51:00 2021
 Response via : Initial Calibration

Compound	R.T.	QIon	Response	Conc	Units	Dev(Min)
Internal Standards						
1) 1,4-Dichlorobenzene-d4	7.510	152	98700	20.000	ng/ul	0.00
20) Naphthalene-d8	10.275	136	453751	20.000	ng/ul	# 0.00
38) Acenaphthene-d10	14.157	164	343342	20.000	ng/ul	0.00
64) Phenanthrene-d10	17.021	188	6064031	20.000	ng/ul	0.12
79) Chrysene-d12	21.121	240	852099	20.000	ng/ul	0.01
88) Perylene-d12	23.256	264	772400	20.000	ng/ul	0.00
System Monitoring Compounds						
3) 1,4-Dioxane-d8	3.128	96	134270	53.158	ng/uL	0.00
4) Pyridine-d5	3.516	84	1101891	166.819	ng/ul	0.00
7) Phenol-d5	6.722	99	1470214	170.474	ng/ul	0.02
9) Bis-(2-Chloroethyl)eth...	6.881	67	779280	140.280	ng/ul	0.01
11) 2-Chlorophenol-d4	7.057	132	1213050	183.331	ng/ul	0.00
15) 4-Methylphenol-d8	8.245	113	1249233	180.749	ng/ul	0.02
21) Nitrobenzene-d5	8.675	128	607543	180.022	ng/ul	0.01
24) 2-Nitrophenol-d4	9.381	143	744971	201.746	ng/ul	0.01
28) 2,4-Dichlorophenol-d3	9.916	165	1471515	207.076	ng/ul	0.01
31) 4-Chloroaniline-d4	10.434	131	1796521	178.023	ng/ul	0.01
46) Dimethylphthalate-d6	13.598	166	4392583	182.742	ng/ul	0.02
49) Acenaphthylene-d8	13.851	160	5363816	176.657	ng/ul	0.01
54) 4-Nitrophenol-d4	14.433	143	823698	196.908	ng/ul	0.05
60) Fluorene-d10	15.169	176	3857026	182.229	ng/ul	0.02
65) 4,6-Dinitro-2-methylph...	15.327	200	952575	24.498	ng/ul	0.03
73) Anthracene-d10	17.021	188	6066033	21.466	ng/ul	0.02
81) Pyrene-d10	19.321	212	6897763	146.777	ng/ul	0.01
92) Benzo(a)pyrene-d12	23.139	264	7468405	187.318	ng/ul	0.02
Target Compounds						
2) 1,4-Dioxane	3.158	88	140643	54.009	ng/uL#	86
5) Pyridine	3.534	79	1096666	152.297	ng/ul	91
6) Benzaldehyde	6.681	77	523535	117.975	ng/ul	98
8) Phenol	6.751	94	1459683	165.129	ng/ul	97
10) Bis(2-Chloroethyl)ether	6.969	93	1053239	152.965	ng/ul	91
12) 2-Chlorophenol	7.093	128	1202305	181.385	ng/ul	94
13) 2-Methylphenol	7.969	108	1123889	174.895	ng/ul	97
14) 2,2'-oxybis(1-Chloropr...	8.051	45	1297394	114.427	ng/ul#	89
16) Acetophenone	8.351	105	1867531	171.695	ng/ul	96
17) N-Nitroso-di-n-propyla...	8.369	70	946938	175.261	ng/ul	89
18) 4-Methylphenol	8.322	108	1242804	176.252	ng/ul	100
19) Hexachloroethane	8.563	117	479137	171.781	ng/ul	90
22) Nitrobenzene	8.722	77	1387496	159.897	ng/ul	97
23) Isophorone	9.257	82	2649664	174.969	ng/ul#	95
25) 2-Nitrophenol	9.416	139	759224	191.776	ng/ul	93
26) 2,4-Dimethylphenol	9.487	107	1455697	177.298	ng/ul	98
27) Bis(2-Chloroethoxy)met...	9.722	93	1558795	162.657	ng/ul	99
29) 2,4-Dichlorophenol	9.945	162	1375282	199.537	ng/ul	98
30) Naphthalene	10.328	128	3869603	169.589	ng/ul	100
32) 4-Chloroaniline	10.463	127	1777565	175.579	ng/ul	100
33) Hexachlorobutadiene	10.598	225	839569	179.191	ng/ul	99
34) Caprolactam	11.322	113	233320	117.025	ng/ul#	80
35) 4-Chloro-3-methylphenol	11.610	107	1397123	200.016	ng/ul	99
36) 2-Methylnaphthalene	11.945	142	3096880	190.362	ng/ul	99

Data Path : Z:\svoasrv\HPCHEM1\BNA_M\Data\BM082821\
 Data File : BM031938.D
 Acq On : 28 Aug 2021 18:42
 Operator : CG/JU
 Sample : SSTD16023
 Misc :
 ALS Vial : 7 Sample Multiplier: 1

Instrument :
 BNA_M
 ClientSampled :

Quant Time: Aug 28 23:56:27 2021
 Quant Method : Z:\SVOASRV\HPCHEM1\BNA_M\METHODS\SFAM-EPA-BM082821.M
 Quant Title : SVOA CALIBRATION
 QLast Update : Sat Aug 28 23:51:00 2021
 Response via : Initial Calibration

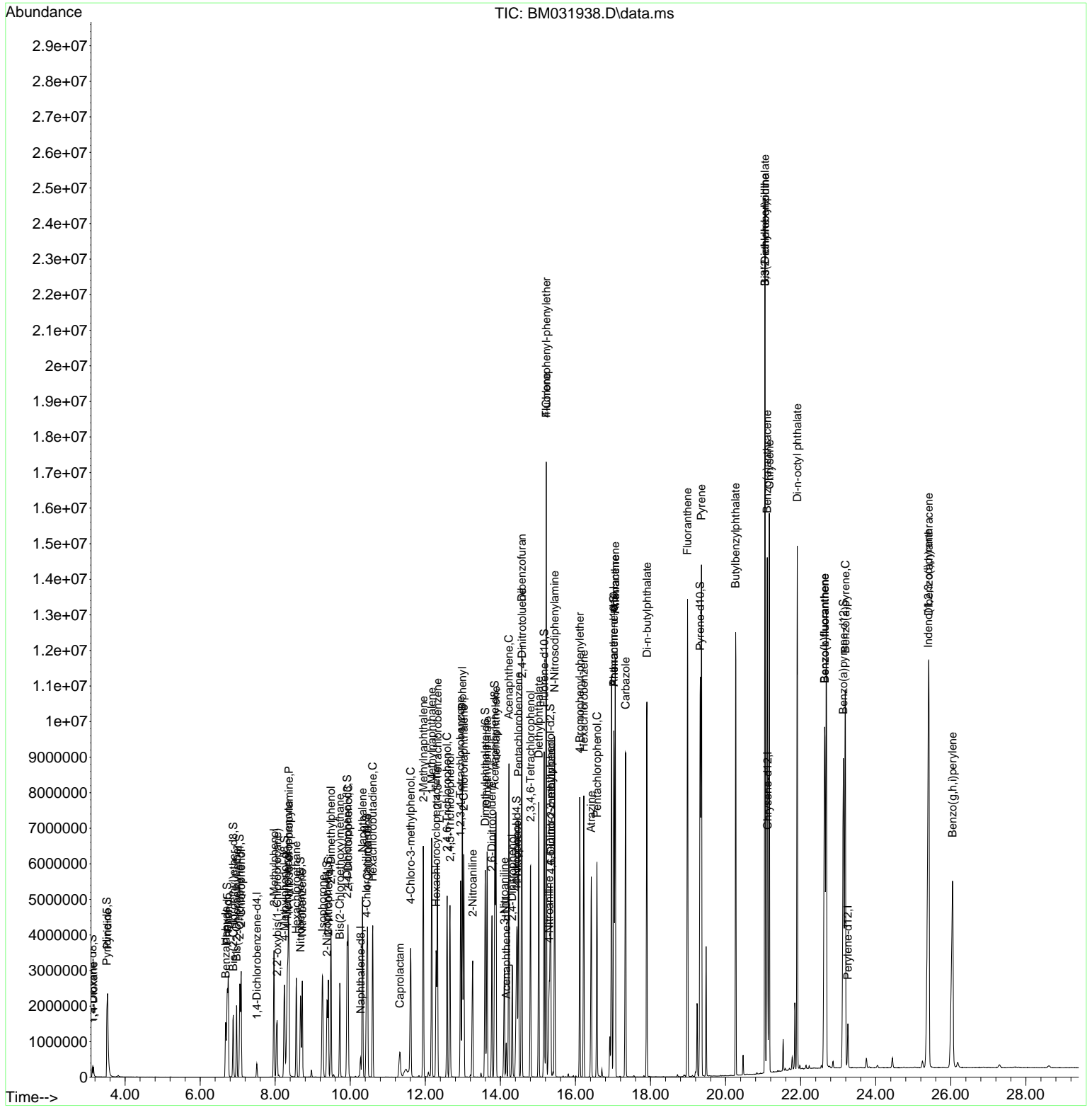
Compound	R.T.	QIon	Response	Conc	Units	Dev(Min)
37) 1-Methylnaphthalene	12.169	142	3130708	189.834	ng/ul	100
39) 1,2,4,5-Tetrachloroben...	12.322	216	1731471	166.249	ng/ul	98
40) Hexachlorocyclopentadiene	12.286	237	1063721	168.020	ng/ul	98
41) 2,4,6-Trichlorophenol	12.580	196	1211660	184.407	ng/ul	98
42) 2,4,5-Trichlorophenol	12.657	196	1311281	188.284	ng/ul	98
43) 1,1'-Biphenyl	12.986	154	4159622	166.265	ng/ul	98
44) 2-Chloronaphthalene	13.028	162	3269305	166.979	ng/ul	99
45) 2-Nitroaniline	13.263	65	958117	174.155	ng/ul	90
47) Dimethylphthalate	13.645	163	4200239	178.364	ng/ul	100
48) 2,6-Dinitrotoluene	13.775	165	948015	209.021	ng/ul	94
50) Acenaphthylene	13.880	152	4919742	173.440	ng/ul	99
51) 3-Nitroaniline	14.104	138	826443	174.406	ng/ul	93
52) Acenaphthene	14.227	153	3543654	171.252	ng/ul	98
53) 2,4-Dinitrophenol	14.316	184	703440	260.276	ng/ul	92
55) 4-Nitrophenol	14.445	109	742978	209.259	ng/ul	87
56) Dibenzofuran	14.569	168	5050593	173.342	ng/ul	95
57) 2,4-Dinitrotoluene	14.574	165	1398330	221.143	ng/ul#	94
58) 2,3,4,6-Tetrachlorophenol	14.804	232	1171435	202.298	ng/ul	98
59) Diethylphthalate	15.022	149	4408377	188.616	ng/ul	97
61) Fluorene	15.221	166	4313805	179.751	ng/ul	99
62) 4-Chlorophenyl-phenyle...	15.221	204	2202300	182.336	ng/ul	97
63) 4-Nitroaniline	15.298	138	735599	162.959	ng/ul#	83
66) 4,6-Dinitro-2-methylph...	15.345	198	903154	24.060	ng/ul#	94
67) N-Nitrosodiphenylamine	15.445	169	3762236	20.811	ng/ul	99
68) 4-Bromophenyl-phenylether	16.116	248	1417560	22.196	ng/ul	99
69) Hexachlorobenzene	16.221	284	1617751	22.319	ng/ul	97
70) Atrazine	16.421	200	1206735	18.742	ng/ul	98
71) Pentachlorophenol	16.574	266	1066919	24.222	ng/ul	98
72) Phenanthrene	17.057	178	7080594	21.882	ng/ul	98
74) Anthracene	17.057	178	7080594	21.298	ng/ul	98
75) 1,2,3,4-Tetrachloroben...	12.939	216	1751483	18.630	ng/uL	99
76) Pentachlorobenzene	14.480	250	1844670	20.052	ng/uL	99
77) Carbazole	17.339	167	6260098	21.661	ng/ul	99
78) Di-n-butylphthalate	17.904	149	7642990	22.947	ng/ul	98
80) Fluoranthene	18.986	202	8183720	141.229	ng/ul	97
82) Pyrene	19.357	202	8448423	140.672	ng/ul	97
83) Butylbenzylphthalate	20.268	149	3785537	184.397	ng/ul	99
84) 3,3'-Dichlorobenzidine	21.051	252	3126429	201.071	ng/ul	97
85) Benzo(a)anthracene	21.109	228	8391474	157.511	ng/ul	97
86) Bis(2-ethylhexyl)phtha...	21.051	149	5577187	184.282	ng/ul#	93
87) Chrysene	21.168	228	7957877	151.812	ng/ul	95
89) Di-n-octyl phthalate	21.909	149	9486825	197.773	ng/ul	100
90) Benzo(b)fluoranthene	22.639	252	9680434	194.560	ng/ul	98
91) Benzo(k)fluoranthene	22.639	252	9680434	200.167	ng/ul	97
93) Benzo(a)pyrene	23.192	252	7784837	176.808	ng/ul	97
94) Indeno(1,2,3-cd)pyrene	25.403	276	8901432	162.558	ng/ul	96
95) Dibenzo(a,h)anthracene	25.415	278	7626905	166.116	ng/ul#	96
96) Benzo(g,h,i)perylene	26.044	276	6936730	158.004	ng/ul	95

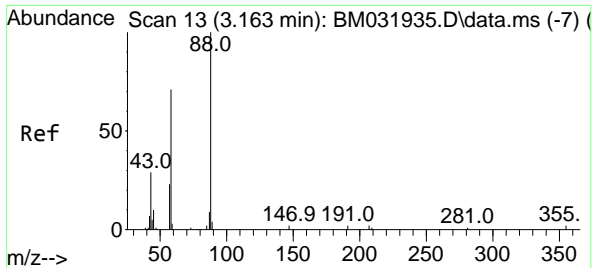
(#) = qualifier out of range (m) = manual integration (+) = signals summed

Data Path : Z:\svoasrv\HPCHEM1\BNA_M\Data\BM082821\
 Data File : BM031938.D
 Acq On : 28 Aug 2021 18:42
 Operator : CG/JU
 Sample : SSTD16023
 Misc :
 ALS Vial : 7 Sample Multiplier: 1

Instrument :
 BNA_M
 ClientSampleId :

Quant Time: Aug 28 23:56:27 2021
 Quant Method : Z:\SVOASRV\HPCHEM1\BNA_M\METHODS\SFAM-EPA-BM082821.M
 Quant Title : SVOA CALIBRATION
 QLast Update : Sat Aug 28 23:51:00 2021
 Response via : Initial Calibration



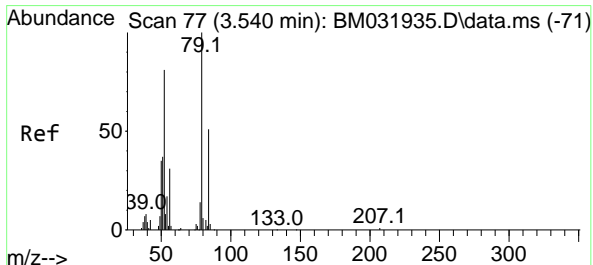
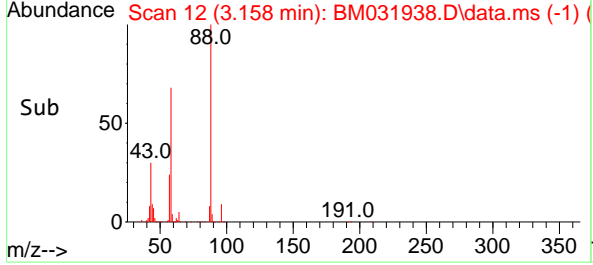
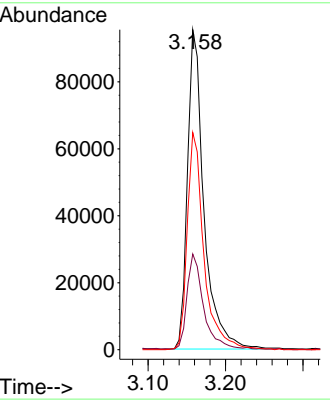
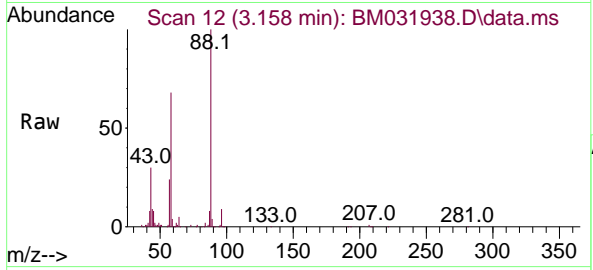


#2
 1,4-Dioxane
 Concen: 54.009 ng/uL
 RT: 3.158 min Scan# 12
 Delta R.T. -0.006 min
 Lab File: BM031938.D
 Acq: 28 Aug 2021 18:42

Instrument :
 BNA_M
 ClientSampled :

Tgt Ion: 88 Resp: 140643

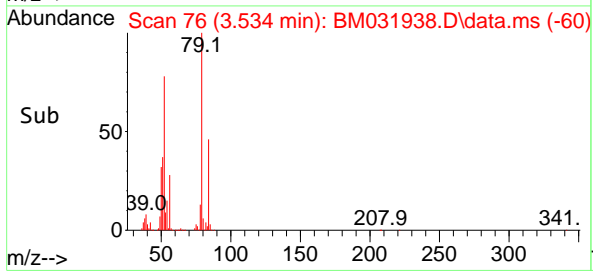
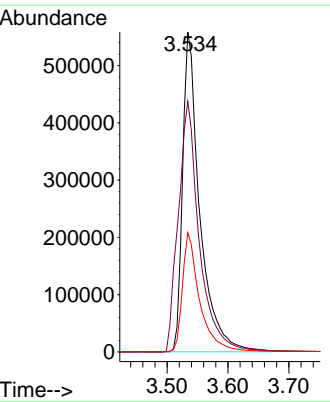
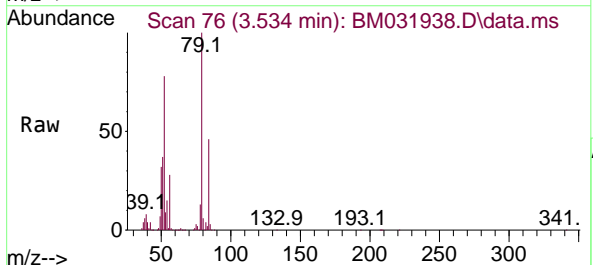
Ion	Ratio	Lower	Upper
88	100		
43	29.9	31.5	47.3#
58	67.8	64.1	96.1

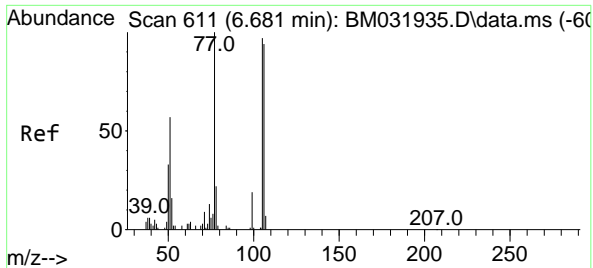


#5
 Pyridine
 Concen: 152.297 ng/uL
 RT: 3.534 min Scan# 76
 Delta R.T. -0.006 min
 Lab File: BM031938.D
 Acq: 28 Aug 2021 18:42

Tgt Ion: 79 Resp: 1096666

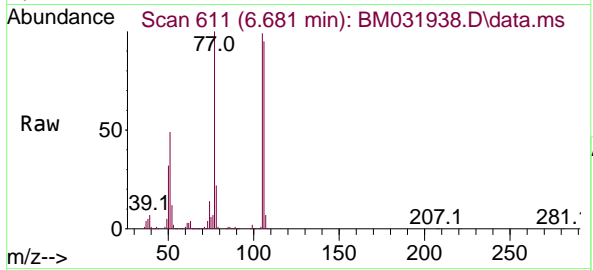
Ion	Ratio	Lower	Upper
79	100		
52	78.3	69.9	104.9
51	37.3	33.8	50.6





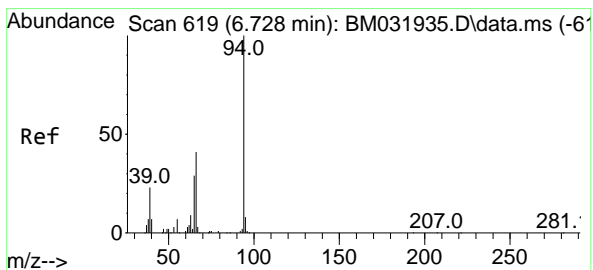
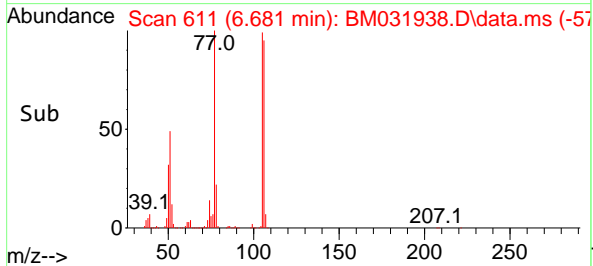
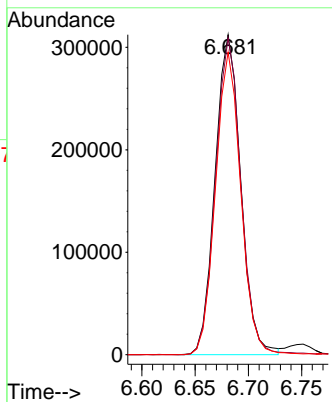
#6
Benzaldehyde
Concen: 117.975 ng/u1
RT: 6.681 min Scan# 611
Delta R.T. 0.000 min
Lab File: BM031938.D
Acq: 28 Aug 2021 18:42

Instrument :
BNA_M
ClientSampled :

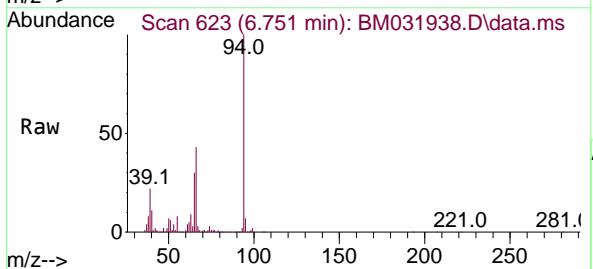


Tgt Ion: 77 Resp: 523535

Ion	Ratio	Lower	Upper
77	100		
105	98.9	82.2	123.4
106	94.6	75.0	112.4

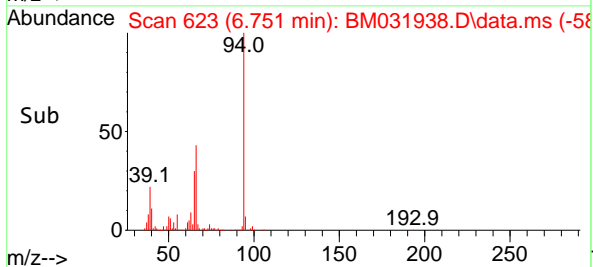
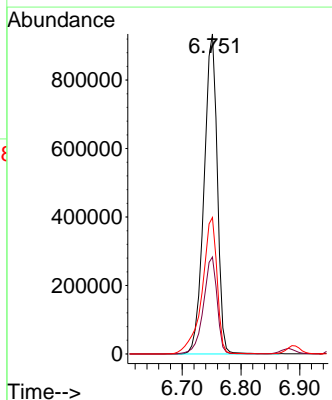


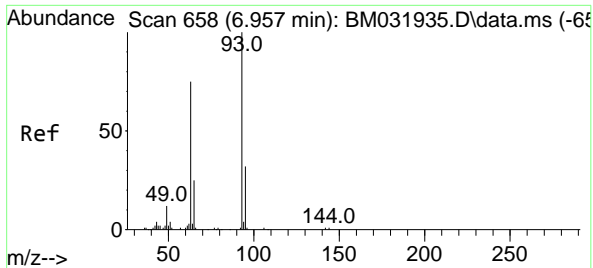
#8
Phenol
Concen: 165.129 ng/u1
RT: 6.751 min Scan# 623
Delta R.T. 0.024 min
Lab File: BM031938.D
Acq: 28 Aug 2021 18:42



Tgt Ion: 94 Resp: 1459683

Ion	Ratio	Lower	Upper
94	100		
65	30.3	24.2	36.4
66	42.6	31.4	47.0



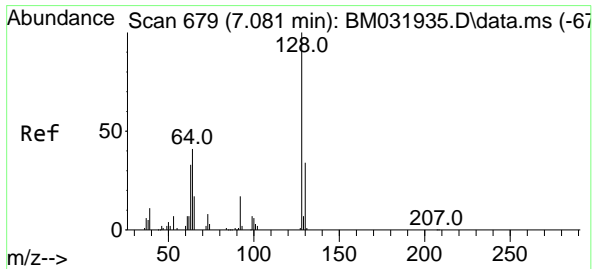
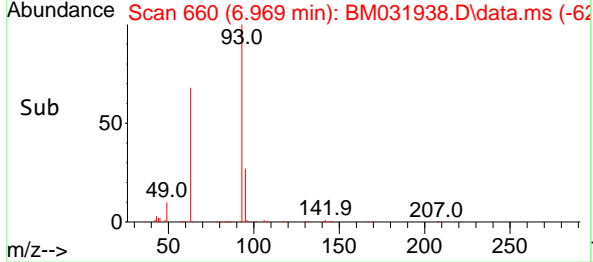
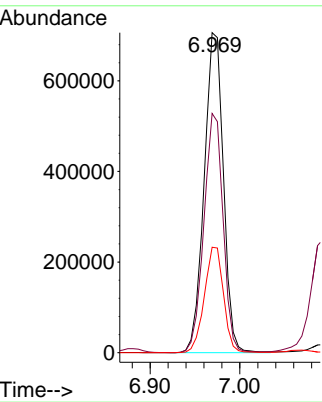
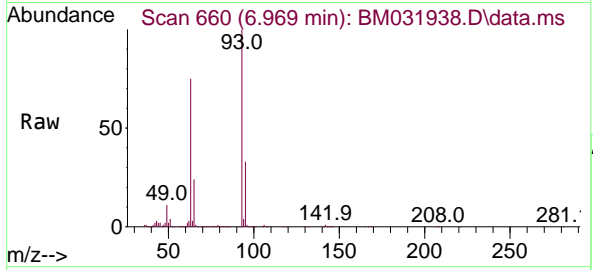


#10
 Bis(2-Chloroethyl)ether
 Concen: 152.965 ng/ul
 RT: 6.969 min Scan# 660
 Delta R.T. 0.012 min
 Lab File: BM031938.D
 Acq: 28 Aug 2021 18:42

Instrument :
 BNA_M
 ClientSampled :

Tgt Ion: 93 Resp: 1053239

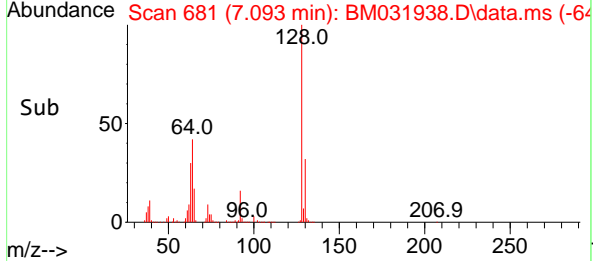
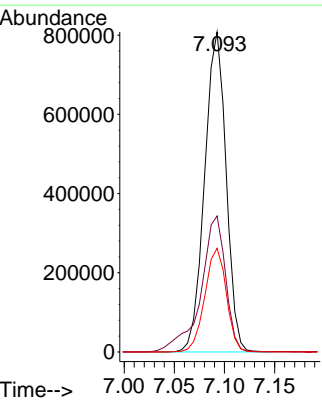
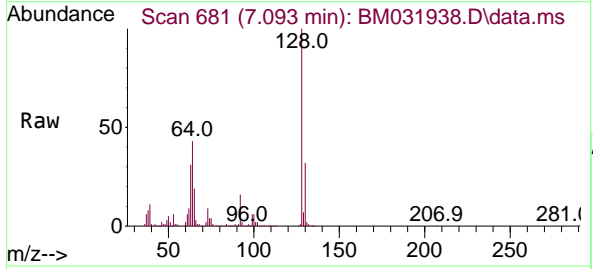
Ion	Ratio	Lower	Upper
93	100		
63	74.7	68.0	102.0
95	33.0	25.8	38.6

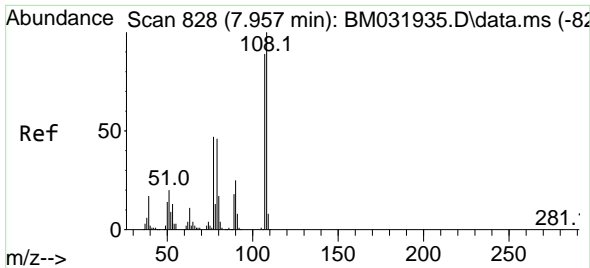


#12
 2-Chlorophenol
 Concen: 181.385 ng/ul
 RT: 7.093 min Scan# 681
 Delta R.T. 0.012 min
 Lab File: BM031938.D
 Acq: 28 Aug 2021 18:42

Tgt Ion: 128 Resp: 1202305

Ion	Ratio	Lower	Upper
128	100		
64	42.5	39.2	58.8
130	32.4	25.3	37.9

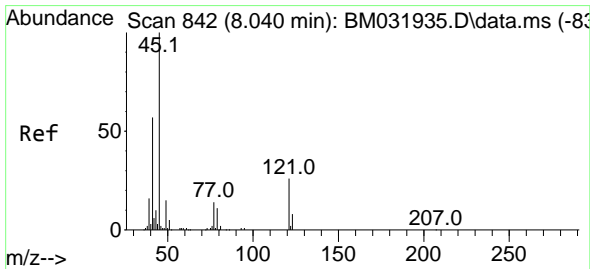
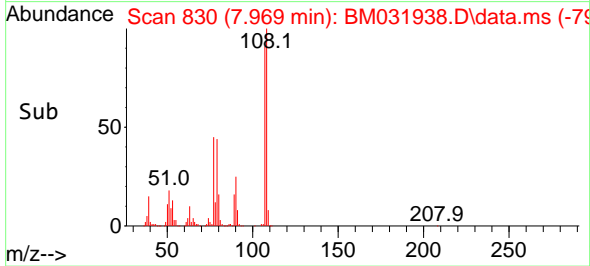
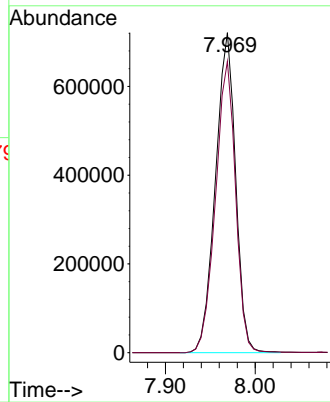
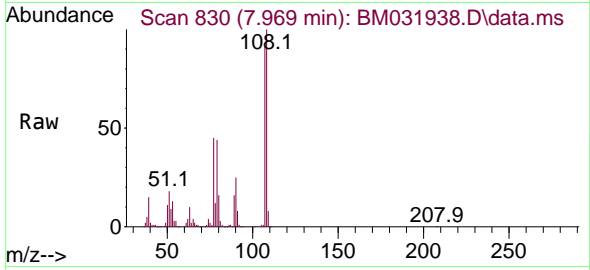




#13
 2-Methylphenol
 Concen: 174.895 ng/ul
 RT: 7.969 min Scan# 830
 Delta R.T. 0.012 min
 Lab File: BM031938.D
 Acq: 28 Aug 2021 18:42

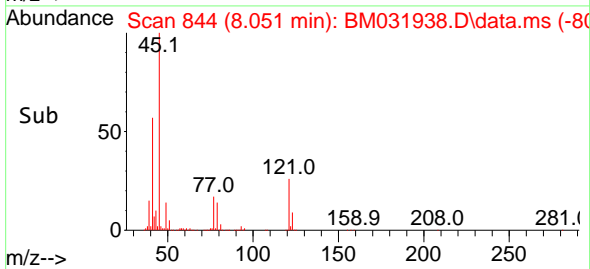
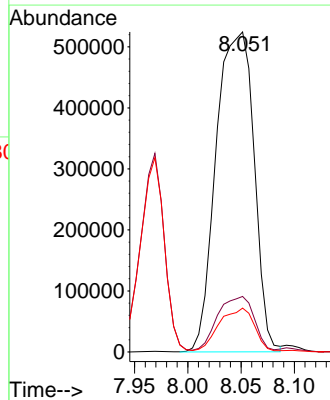
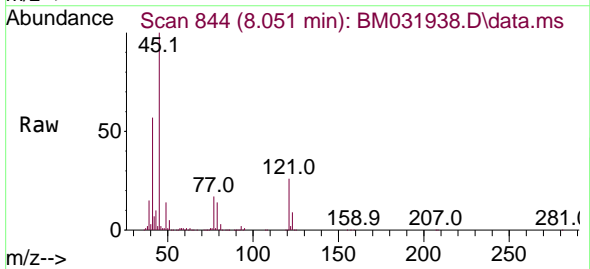
Instrument :
 BNA_M
 ClientSampled :

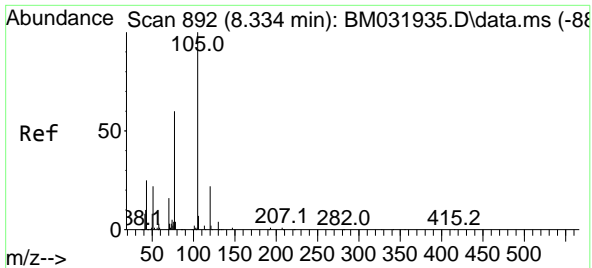
Tgt Ion:108 Resp: 1123889
 Ion Ratio Lower Upper
 108 100
 107 91.1 70.6 105.8



#14
 2,2'-oxybis(1-Chloropropane)
 Concen: 114.427 ng/ul
 RT: 8.051 min Scan# 844
 Delta R.T. 0.012 min
 Lab File: BM031938.D
 Acq: 28 Aug 2021 18:42

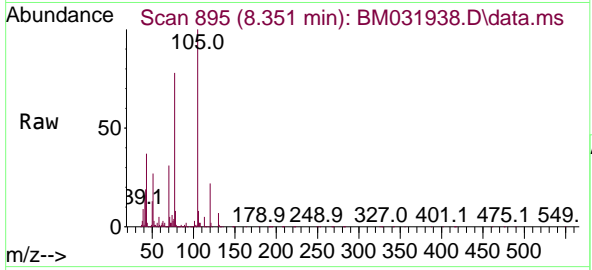
Tgt Ion: 45 Resp: 1297394
 Ion Ratio Lower Upper
 45 100
 77 17.4 10.2 15.4#
 79 13.7 7.8 11.8#





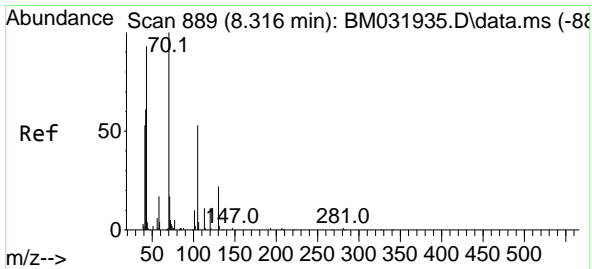
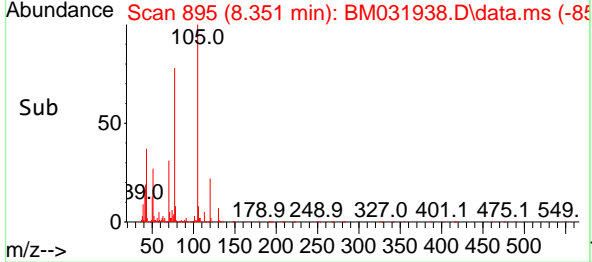
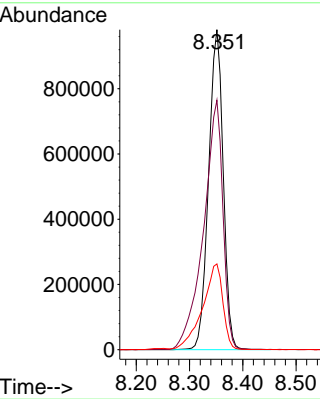
#16
 Acetophenone
 Concen: 171.695 ng/ul
 RT: 8.351 min Scan# 895
 Delta R.T. 0.018 min
 Lab File: BM031938.D
 Acq: 28 Aug 2021 18:42

Instrument :
 BNA_M
 ClientSampled :

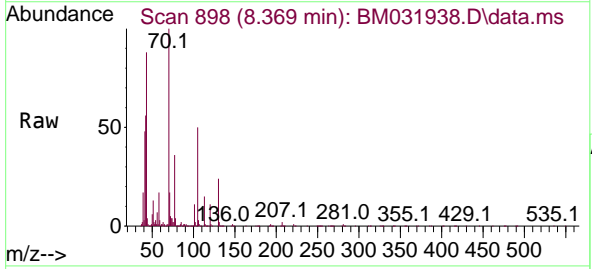


Tgt Ion: 105 Resp: 1867531

Ion	Ratio	Lower	Upper
105	100		
77	77.9	63.7	95.5
51	26.8	25.4	38.0

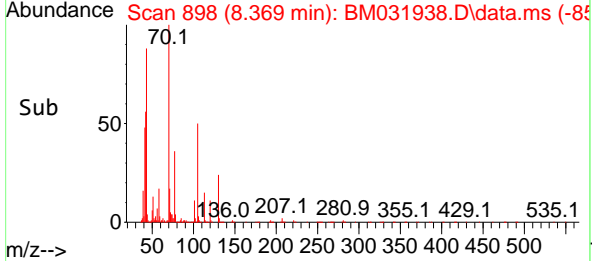
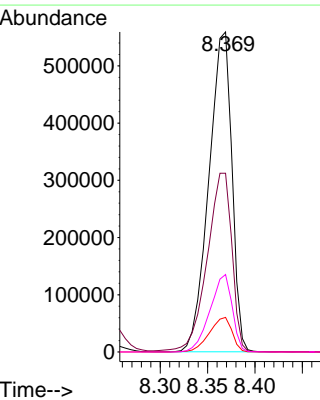


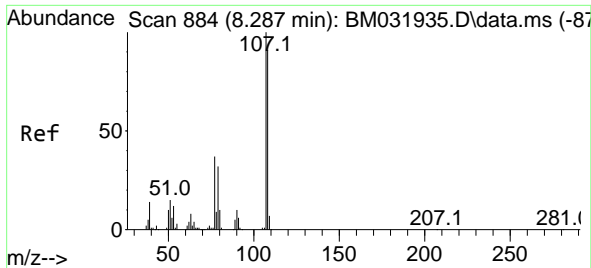
#17
 N-Nitroso-di-n-propylamine
 Concen: 175.261 ng/ul
 RT: 8.369 min Scan# 898
 Delta R.T. 0.053 min
 Lab File: BM031938.D
 Acq: 28 Aug 2021 18:42



Tgt Ion: 70 Resp: 946938

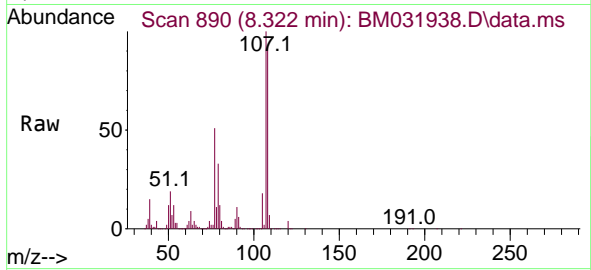
Ion	Ratio	Lower	Upper
70	100		
42	55.9	53.4	80.0
101	10.8	7.4	11.0
130	24.2	16.8	25.2



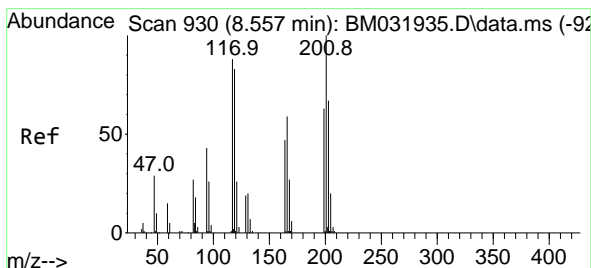
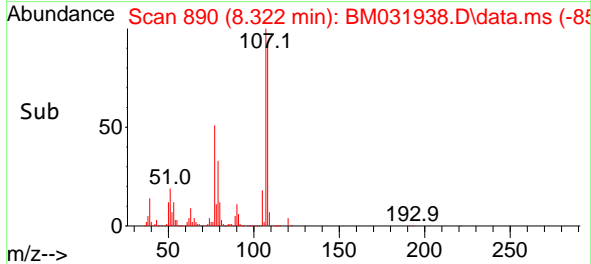
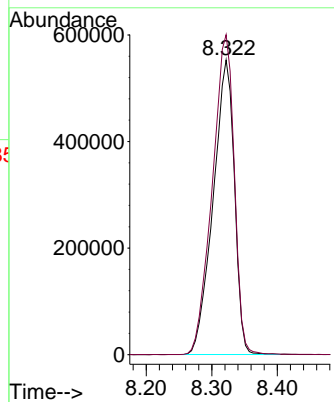


#18
 4-Methylphenol
 Concen: 176.252 ng/ul
 RT: 8.322 min Scan# 890
 Delta R.T. 0.035 min
 Lab File: BM031938.D
 Acq: 28 Aug 2021 18:42

Instrument :
 BNA_M
 ClientSampled :

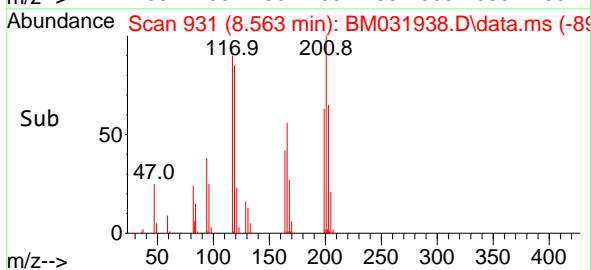
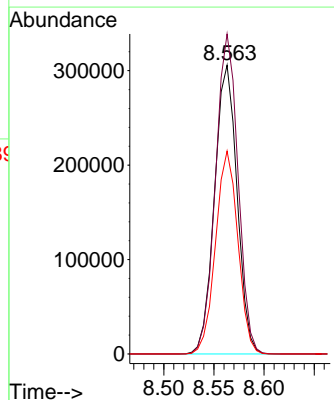
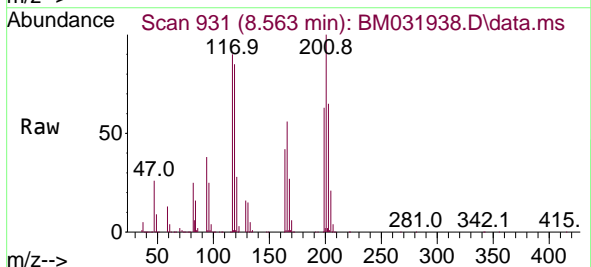


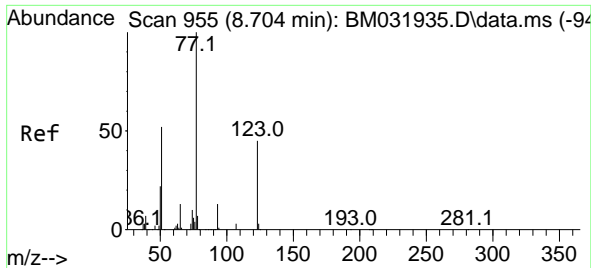
Tgt Ion:108 Resp: 1242804
 Ion Ratio Lower Upper
 108 100
 107 108.6 87.0 130.6



#19
 Hexachloroethane
 Concen: 171.781 ng/ul
 RT: 8.563 min Scan# 931
 Delta R.T. 0.006 min
 Lab File: BM031938.D
 Acq: 28 Aug 2021 18:42

Tgt Ion:117 Resp: 479137
 Ion Ratio Lower Upper
 117 100
 201 110.8 80.1 120.1
 199 70.3 50.8 76.2

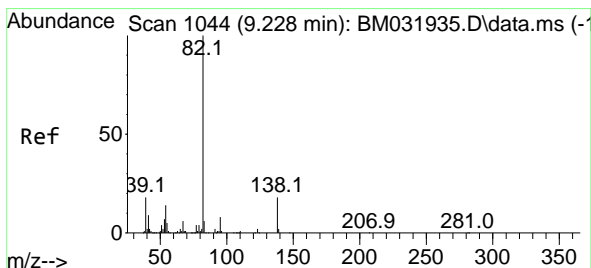
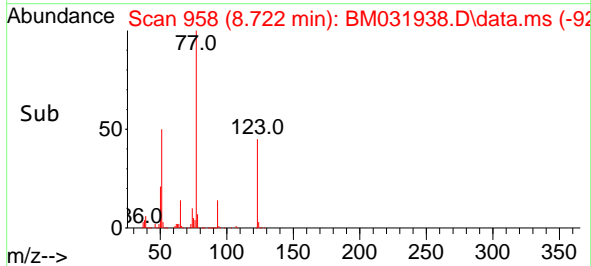
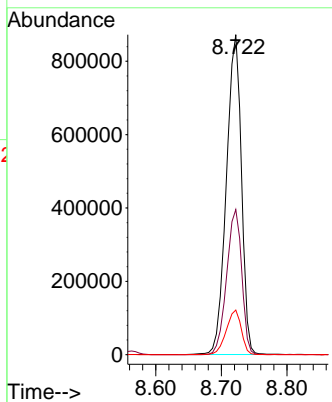
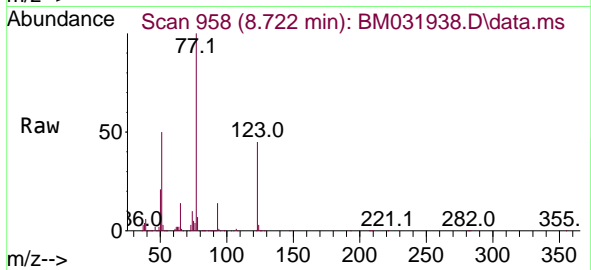




#22
 Nitrobenzene
 Concen: 159.897 ng/u1
 RT: 8.722 min Scan# 958
 Delta R.T. 0.018 min
 Lab File: BM031938.D
 Acq: 28 Aug 2021 18:42

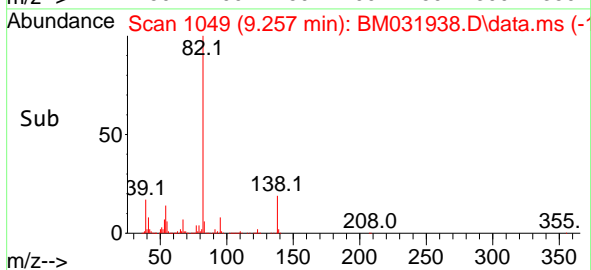
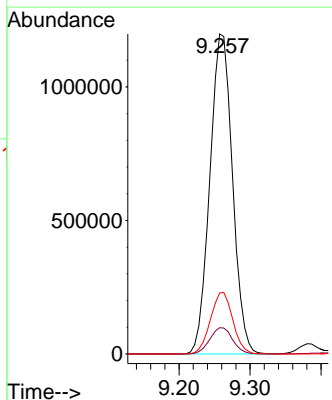
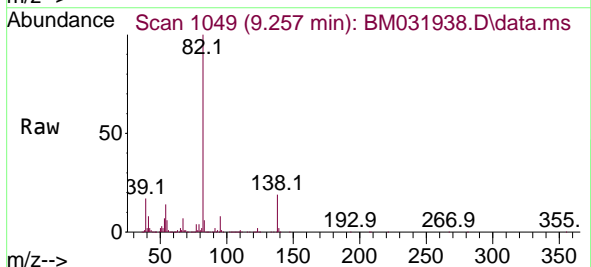
Instrument :
 BNA_M
 ClientSampled :

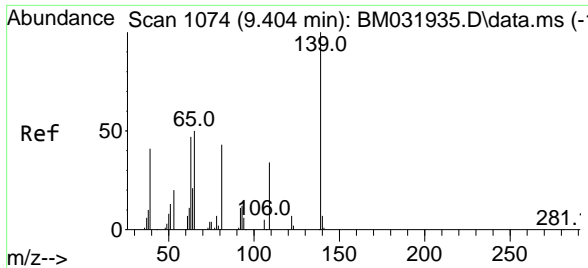
Tgt Ion	Resp	Lower	Upper
77	1387496		
123	45.4	34.8	52.2
65	14.0	10.4	15.6



#23
 Isophorone
 Concen: 174.969 ng/u1
 RT: 9.257 min Scan# 1049
 Delta R.T. 0.029 min
 Lab File: BM031938.D
 Acq: 28 Aug 2021 18:42

Tgt Ion	Resp	Lower	Upper
82	2649664		
95	8.2	5.3	7.9#
138	19.1	13.6	20.4



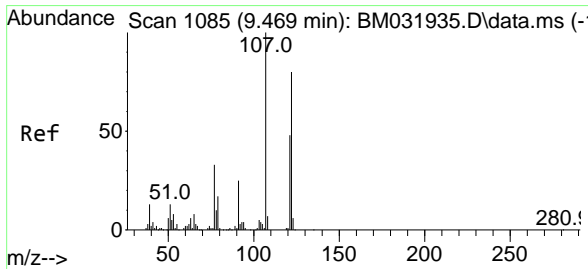
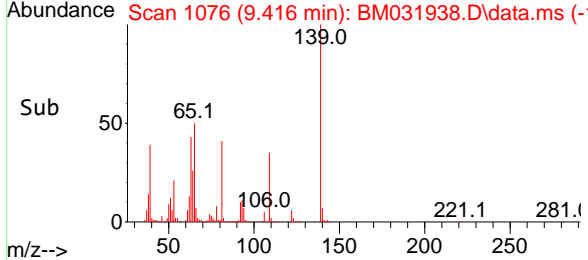
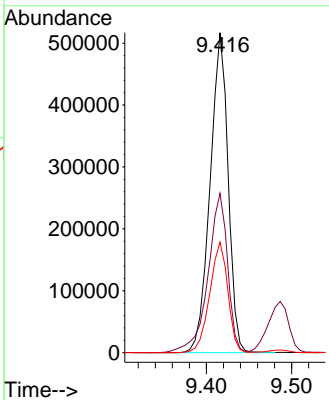
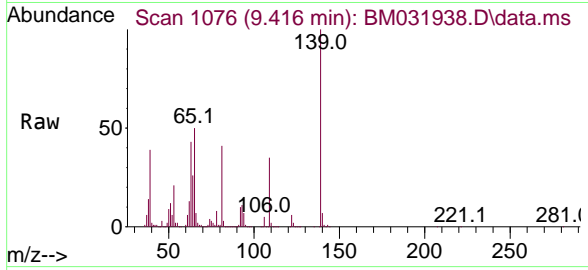


#25
 2-Nitrophenol
 Concen: 191.776 ng/ul
 RT: 9.416 min Scan# 1076
 Delta R.T. 0.012 min
 Lab File: BM031938.D
 Acq: 28 Aug 2021 18:42

Instrument :
 BNA_M
 ClientSampled :

Tgt Ion:139 Resp: 759224

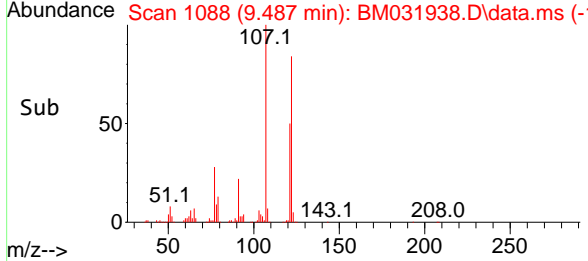
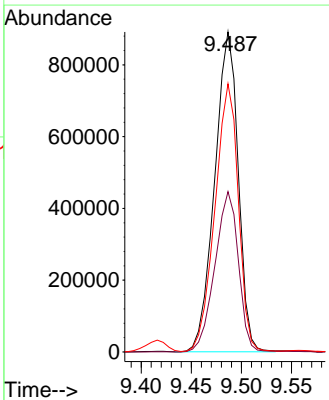
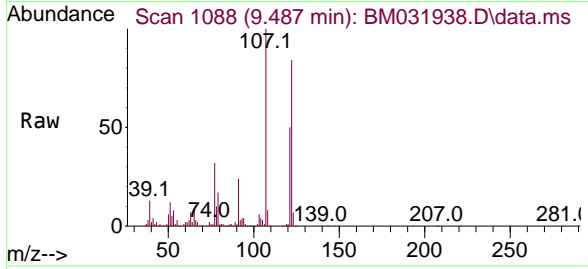
Ion	Ratio	Lower	Upper
139	100		
65	49.8	43.7	65.5
109	34.6	24.0	36.0

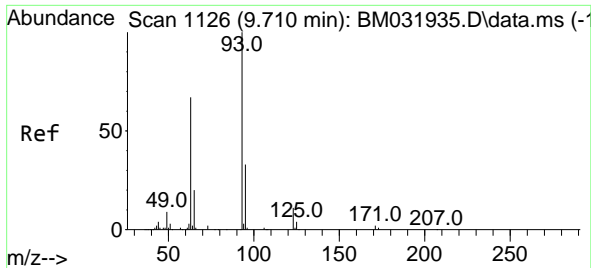


#26
 2,4-Dimethylphenol
 Concen: 177.298 ng/ul
 RT: 9.487 min Scan# 1088
 Delta R.T. 0.018 min
 Lab File: BM031938.D
 Acq: 28 Aug 2021 18:42

Tgt Ion:107 Resp: 1455697

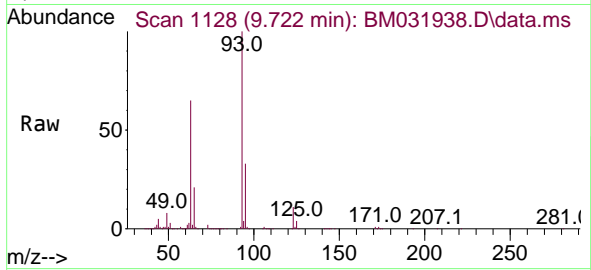
Ion	Ratio	Lower	Upper
107	100		
121	50.1	41.0	61.6
122	83.8	68.2	102.2





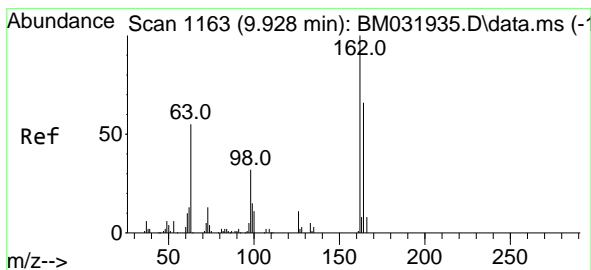
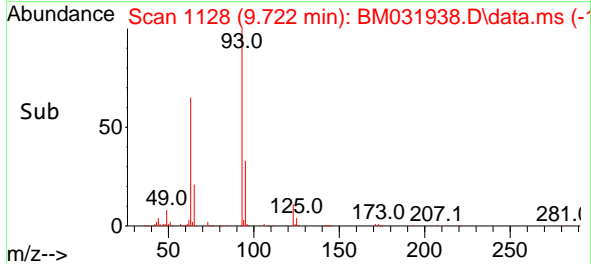
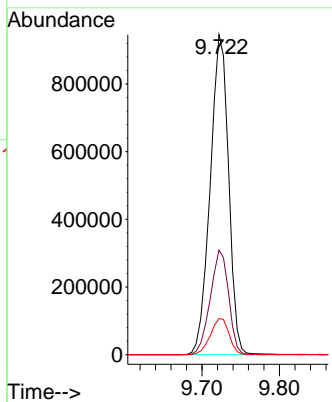
#27
 Bis(2-Chloroethoxy)methane
 Concen: 162.657 ng/ul
 RT: 9.722 min Scan# 1128
 Delta R.T. 0.012 min
 Lab File: BM031938.D
 Acq: 28 Aug 2021 18:42

Instrument :
 BNA_M
 ClientSampled :

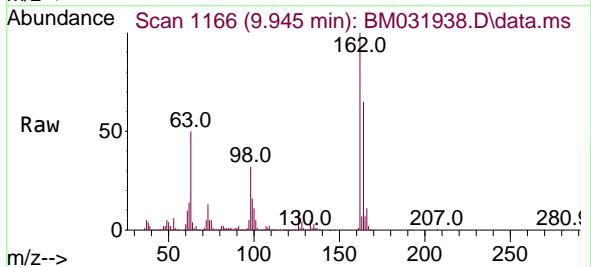


Tgt Ion: 93 Resp: 1558795

Ion	Ratio	Lower	Upper
93	100		
95	32.6	25.9	38.9
123	11.3	8.5	12.7

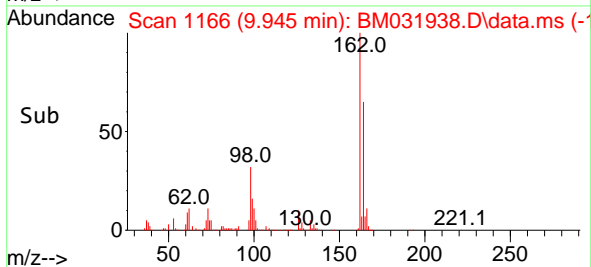
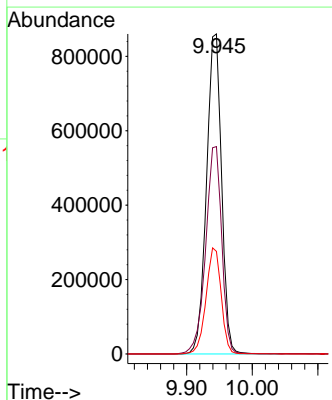


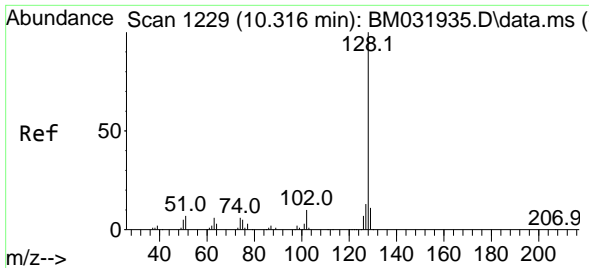
#29
 2,4-Dichlorophenol
 Concen: 199.537 ng/ul
 RT: 9.945 min Scan# 1166
 Delta R.T. 0.018 min
 Lab File: BM031938.D
 Acq: 28 Aug 2021 18:42



Tgt Ion: 162 Resp: 1375282

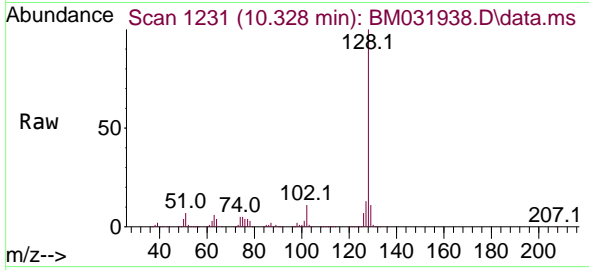
Ion	Ratio	Lower	Upper
162	100		
164	64.8	51.6	77.4
98	32.1	28.2	42.4



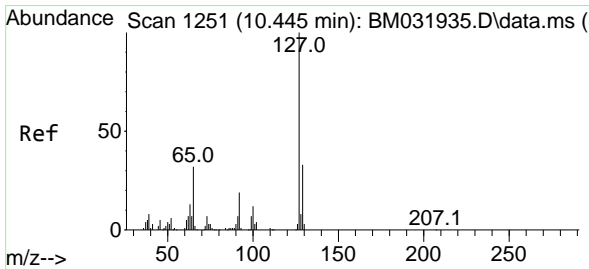
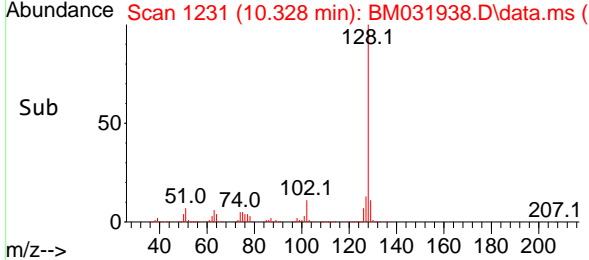
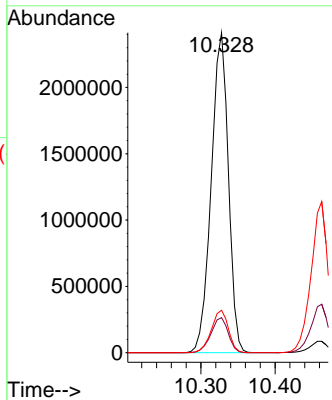


#30
 Naphthalene
 Concen: 169.589 ng/u1
 RT: 10.328 min Scan# 1231
 Delta R.T. 0.012 min
 Lab File: BM031938.D
 Acq: 28 Aug 2021 18:42

Instrument :
 BNA_M
 ClientSampled :

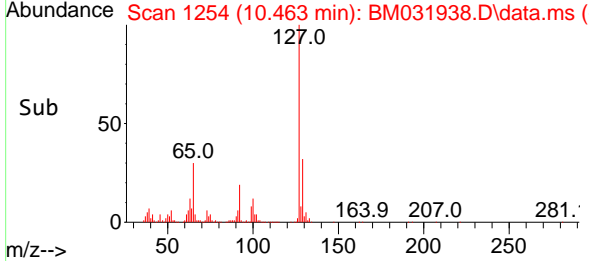
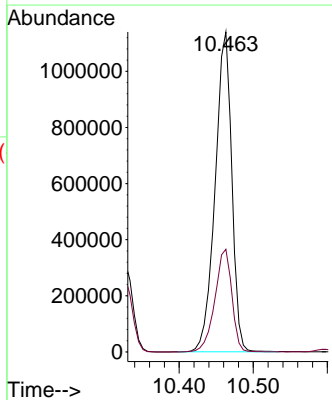
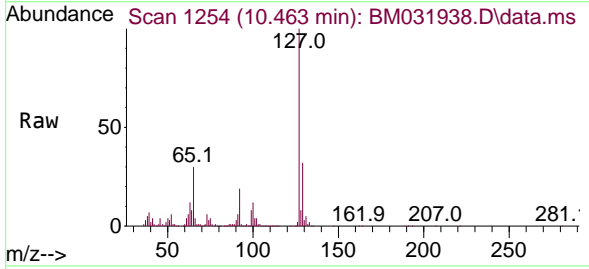


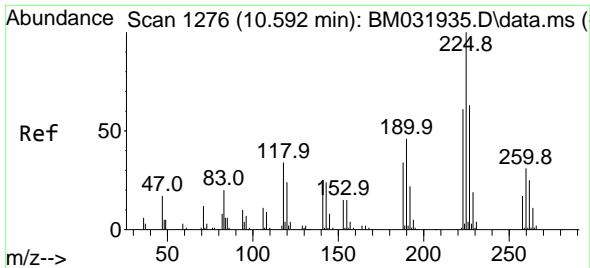
Tgt Ion:128 Resp: 3869603
 Ion Ratio Lower Upper
 128 100
 129 10.9 9.0 13.4
 127 13.2 10.6 15.8



#32
 4-Chloroaniline
 Concen: 175.579 ng/u1
 RT: 10.463 min Scan# 1254
 Delta R.T. 0.018 min
 Lab File: BM031938.D
 Acq: 28 Aug 2021 18:42

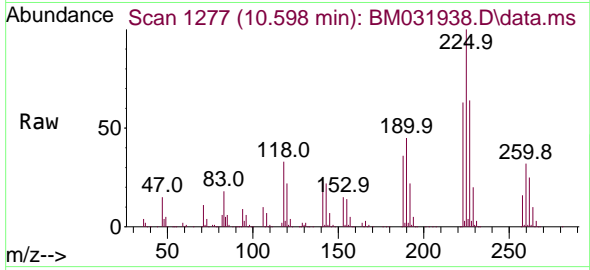
Tgt Ion:127 Resp: 1777565
 Ion Ratio Lower Upper
 127 100
 129 32.1 25.6 38.4



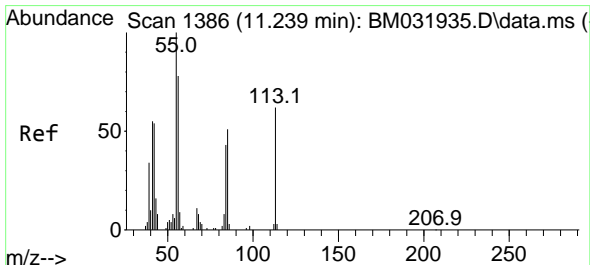
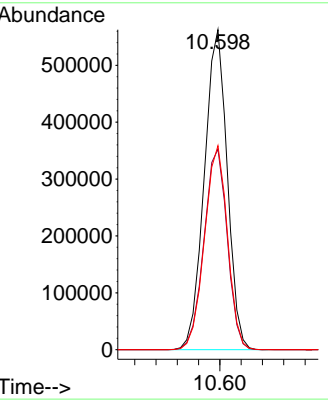
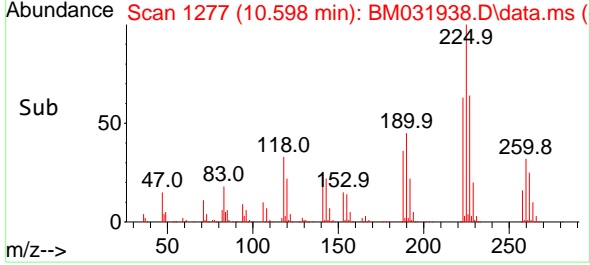


#33
 Hexachlorobutadiene
 Concen: 179.191 ng/uI
 RT: 10.598 min Scan# 1277
 Delta R.T. 0.006 min
 Lab File: BM031938.D
 Acq: 28 Aug 2021 18:42

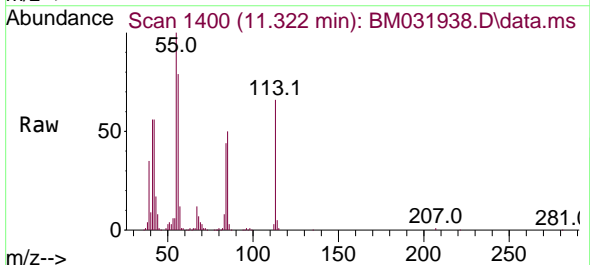
Instrument :
 BNA_M
 ClientSampled :



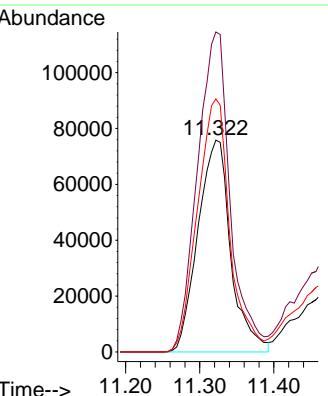
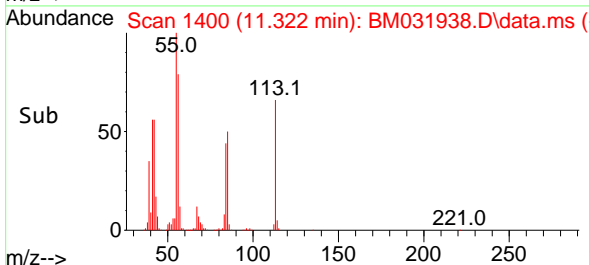
Tgt Ion:225 Resp: 839569
 Ion Ratio Lower Upper
 225 100
 223 62.7 50.7 76.1
 227 63.8 50.7 76.1

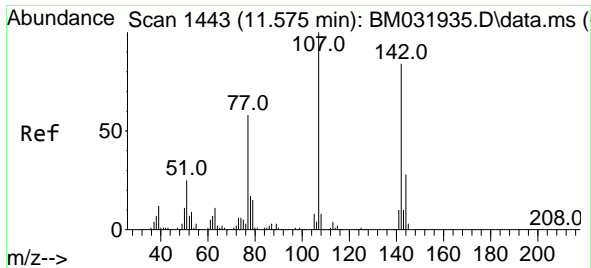


#34
 Caprolactam
 Concen: 117.025 ng/uI
 RT: 11.322 min Scan# 1400
 Delta R.T. 0.082 min
 Lab File: BM031938.D
 Acq: 28 Aug 2021 18:42



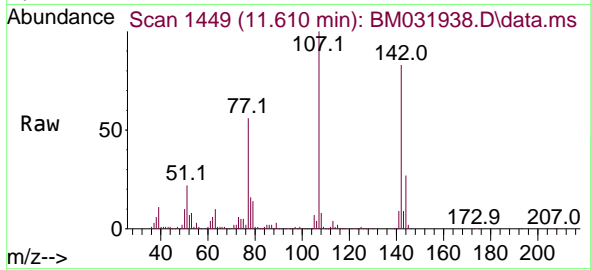
Tgt Ion:113 Resp: 233320
 Ion Ratio Lower Upper
 113 100
 55 151.1 155.2 232.8#
 56 119.5 101.9 152.9



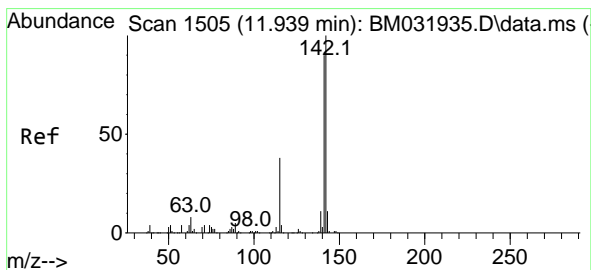
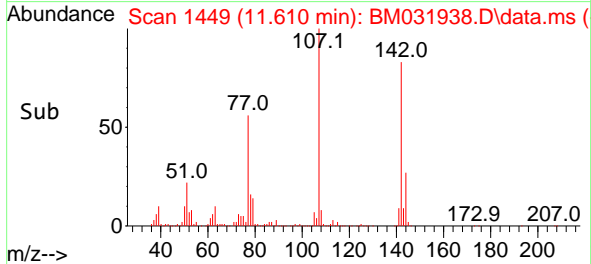
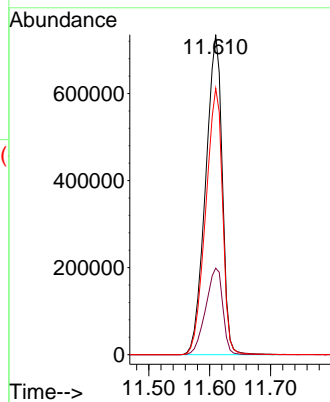


#35
 4-Chloro-3-methylphenol
 Concen: 200.016 ng/ul
 RT: 11.610 min Scan# 1449
 Delta R.T. 0.035 min
 Lab File: BM031938.D
 Acq: 28 Aug 2021 18:42

Instrument :
 BNA_M
 ClientSampled :

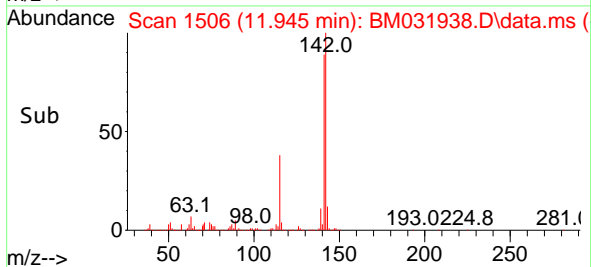
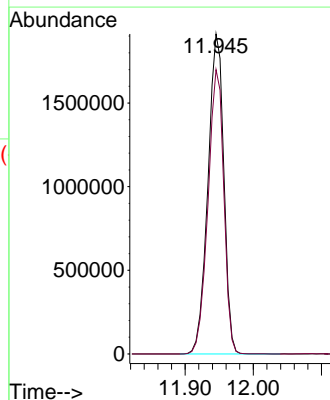
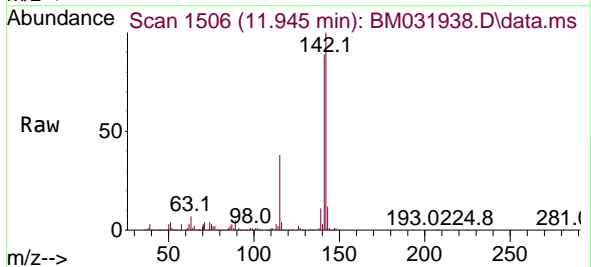


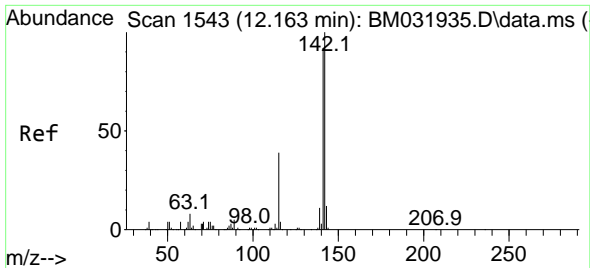
Tgt Ion:107 Resp: 1397123
 Ion Ratio Lower Upper
 107 100
 144 27.1 22.3 33.5
 142 83.3 65.6 98.4



#36
 2-Methylnaphthalene
 Concen: 190.362 ng/ul
 RT: 11.945 min Scan# 1506
 Delta R.T. 0.006 min
 Lab File: BM031938.D
 Acq: 28 Aug 2021 18:42

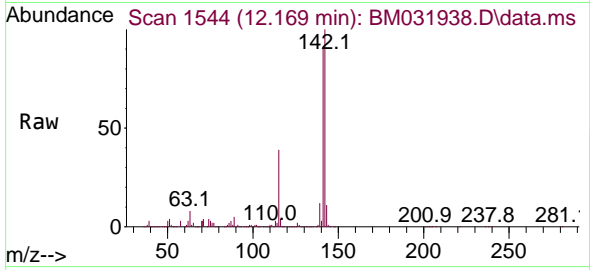
Tgt Ion:142 Resp: 3096880
 Ion Ratio Lower Upper
 142 100
 141 88.8 70.6 105.8



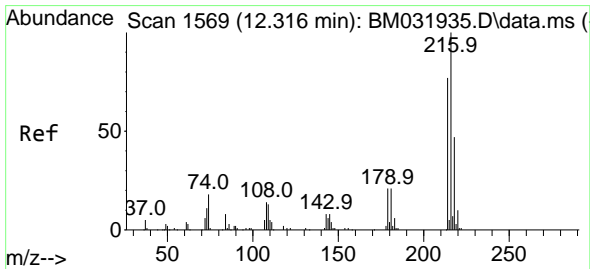
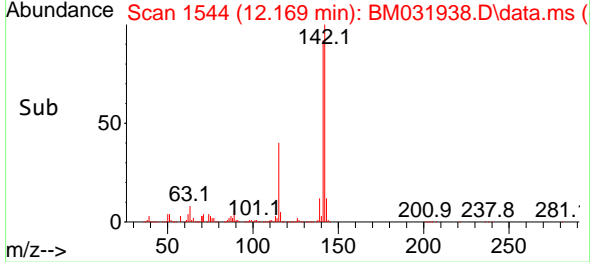
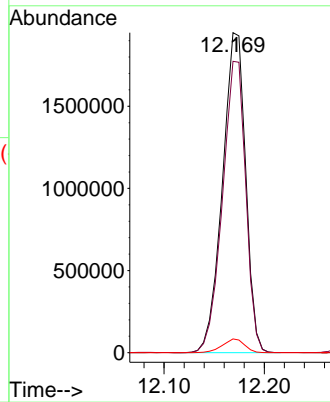


#37
 1-Methylnaphthalene
 Concen: 189.834 ng/ul
 RT: 12.169 min Scan# 1544
 Delta R.T. 0.006 min
 Lab File: BM031938.D
 Acq: 28 Aug 2021 18:42

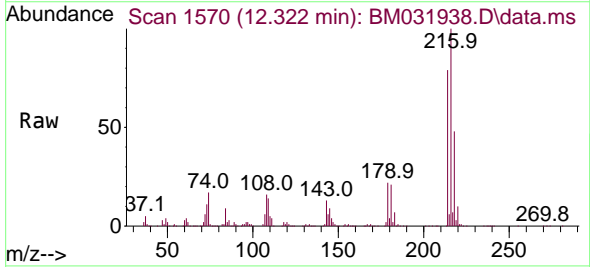
Instrument :
 BNA_M
 ClientSampled :



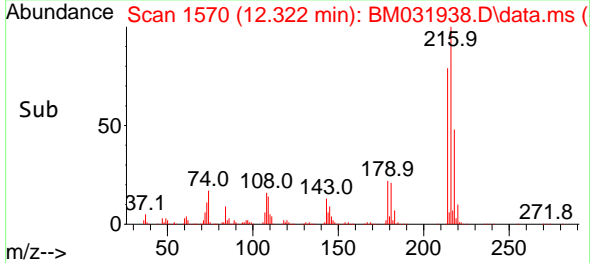
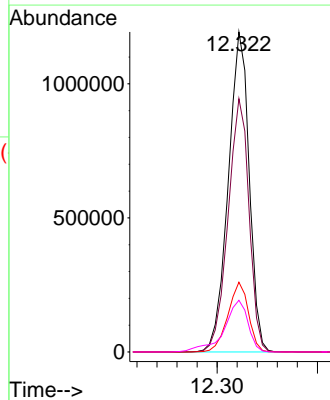
Tgt Ion:142 Resp: 3130708
 Ion Ratio Lower Upper
 142 100
 141 91.1 72.8 109.2
 116 4.3 3.1 4.7

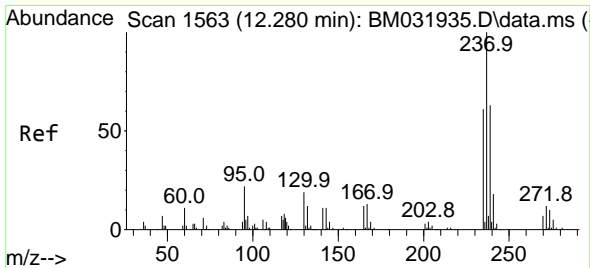


#39
 1,2,4,5-Tetrachlorobenzene
 Concen: 166.249 ng/ul
 RT: 12.322 min Scan# 1570
 Delta R.T. 0.006 min
 Lab File: BM031938.D
 Acq: 28 Aug 2021 18:42



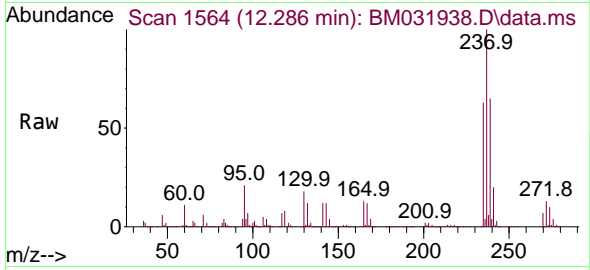
Tgt Ion:216 Resp: 1731471
 Ion Ratio Lower Upper
 216 100
 214 79.1 62.2 93.4
 179 21.8 16.6 24.8
 108 16.2 13.5 20.3



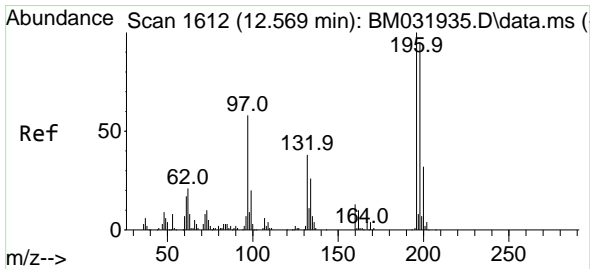
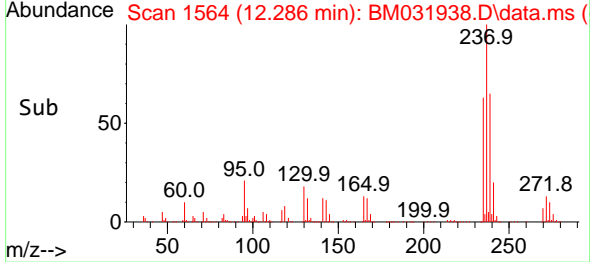
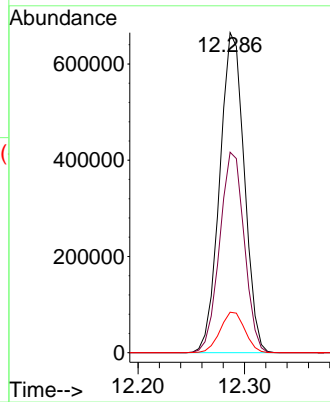


#40
 Hexachlorocyclopentadiene
 Concen: 168.020 ng/ul
 RT: 12.286 min Scan# 1564
 Delta R.T. 0.006 min
 Lab File: BM031938.D
 Acq: 28 Aug 2021 18:42

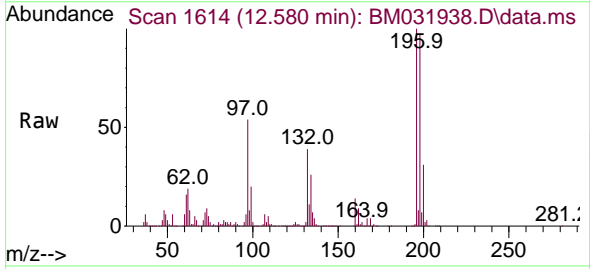
Instrument :
 BNA_M
 ClientSampled :



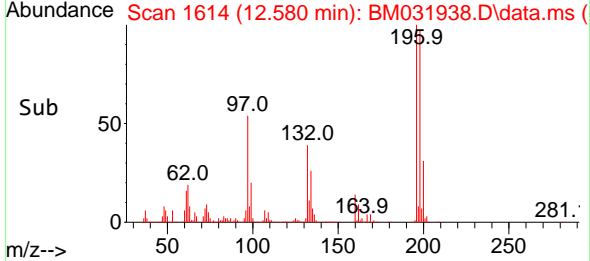
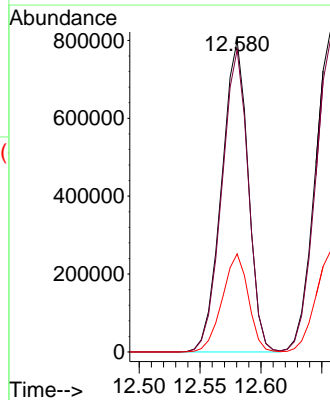
Tgt Ion:237 Resp: 1063721
 Ion Ratio Lower Upper
 237 100
 235 62.6 49.0 73.4
 272 12.7 11.0 16.4

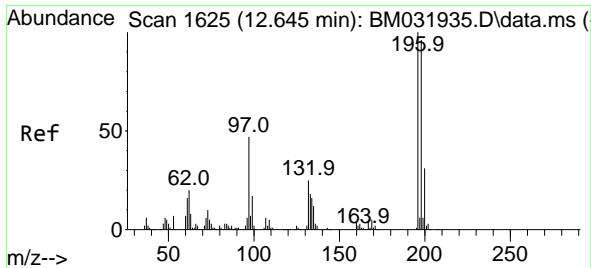


#41
 2,4,6-Trichlorophenol
 Concen: 184.407 ng/ul
 RT: 12.580 min Scan# 1614
 Delta R.T. 0.012 min
 Lab File: BM031938.D
 Acq: 28 Aug 2021 18:42



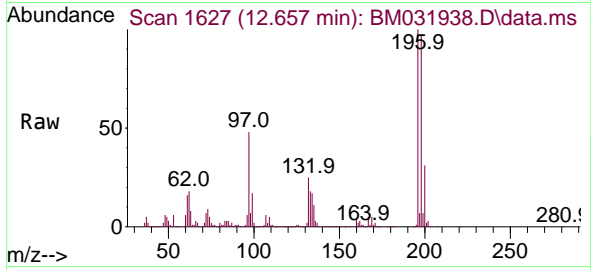
Tgt Ion:196 Resp: 1211660
 Ion Ratio Lower Upper
 196 100
 198 97.0 78.8 118.2
 200 31.5 26.0 39.0



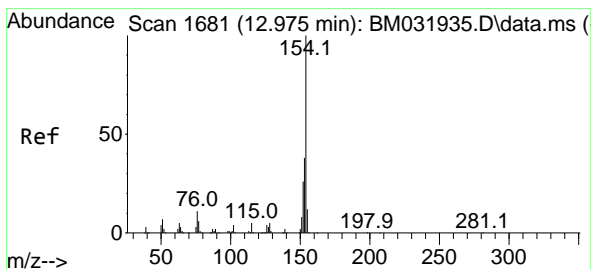
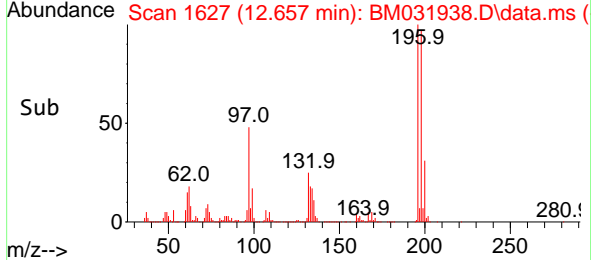
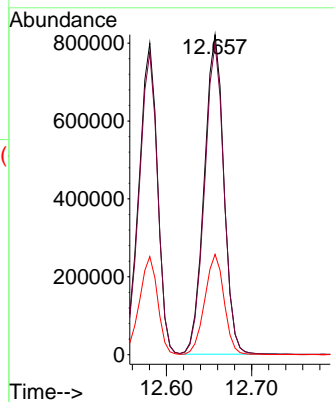


#42
 2,4,5-Trichlorophenol
 Concen: 188.284 ng/uI
 RT: 12.657 min Scan# 1627
 Delta R.T. 0.012 min
 Lab File: BM031938.D
 Acq: 28 Aug 2021 18:42

Instrument :
 BNA_M
 ClientSampled :

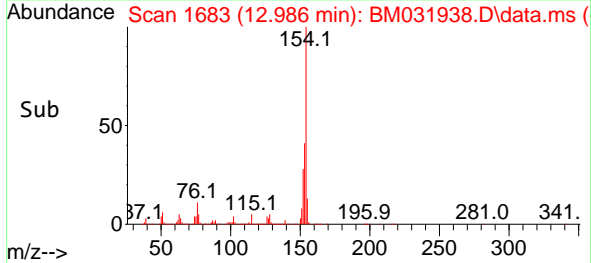
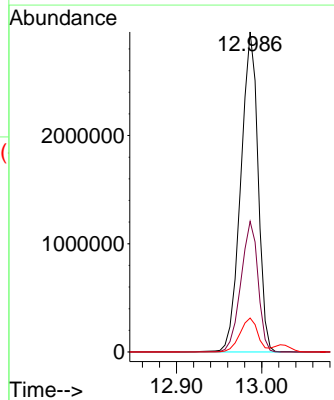
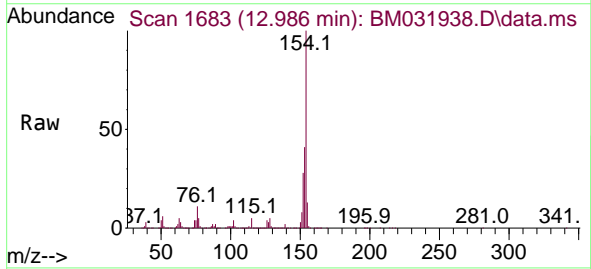


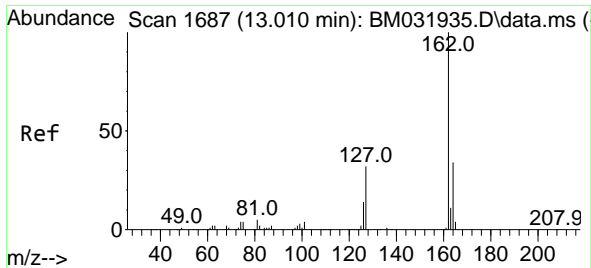
Tgt Ion:196 Resp: 1311281
 Ion Ratio Lower Upper
 196 100
 198 97.3 76.1 114.1
 200 31.4 25.4 38.2



#43
 1,1'-Biphenyl
 Concen: 166.265 ng/uI
 RT: 12.986 min Scan# 1683
 Delta R.T. 0.012 min
 Lab File: BM031938.D
 Acq: 28 Aug 2021 18:42

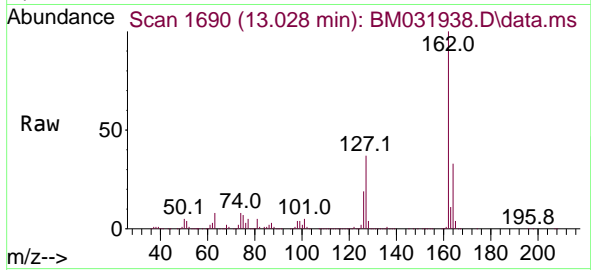
Tgt Ion:154 Resp: 4159622
 Ion Ratio Lower Upper
 154 100
 153 40.8 32.3 48.5
 76 10.6 10.6 15.8



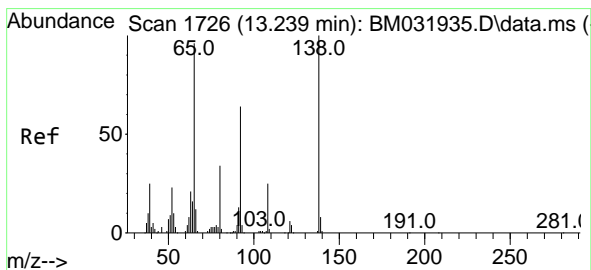
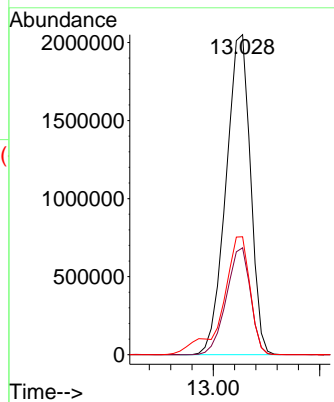
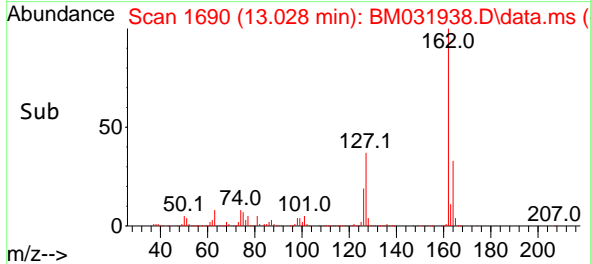


#44
 2-Chloronaphthalene
 Concen: 166.979 ng/uI
 RT: 13.028 min Scan# 1690
 Delta R.T. 0.018 min
 Lab File: BM031938.D
 Acq: 28 Aug 2021 18:42

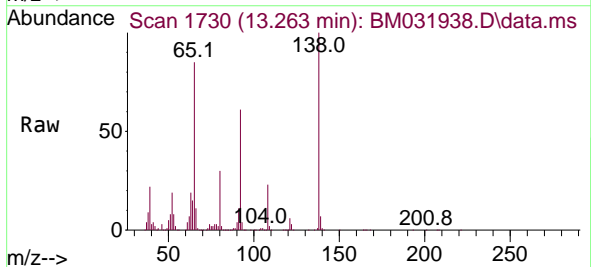
Instrument :
 BNA_M
 ClientSampled :



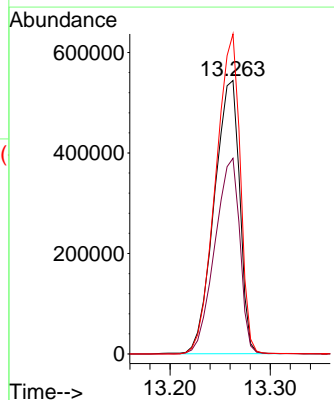
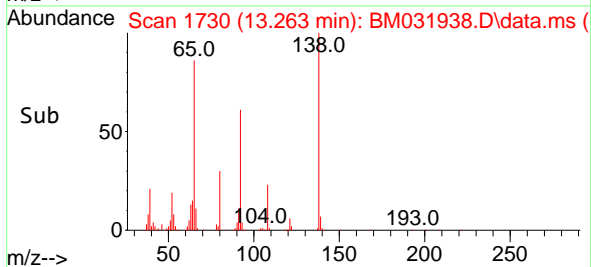
Tgt Ion:162 Resp: 3269305
 Ion Ratio Lower Upper
 162 100
 164 33.4 26.2 39.4
 127 36.9 29.4 44.0

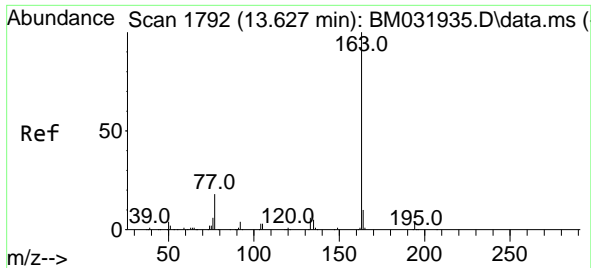


#45
 2-Nitroaniline
 Concen: 174.155 ng/uI
 RT: 13.263 min Scan# 1730
 Delta R.T. 0.024 min
 Lab File: BM031938.D
 Acq: 28 Aug 2021 18:42



Tgt Ion: 65 Resp: 958117
 Ion Ratio Lower Upper
 65 100
 92 71.5 53.9 80.9
 138 117.0 83.3 124.9



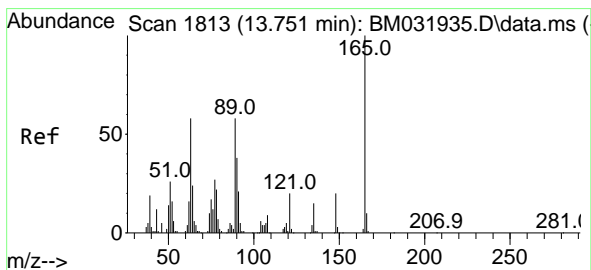
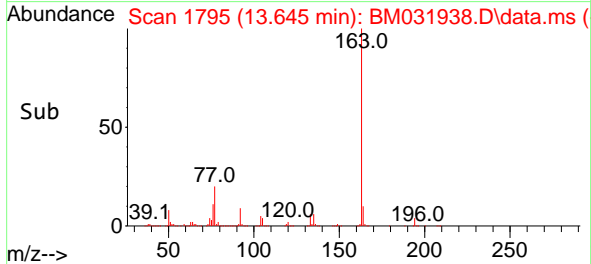
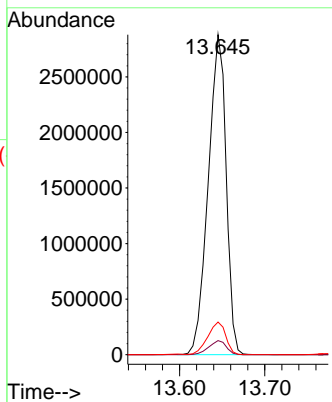
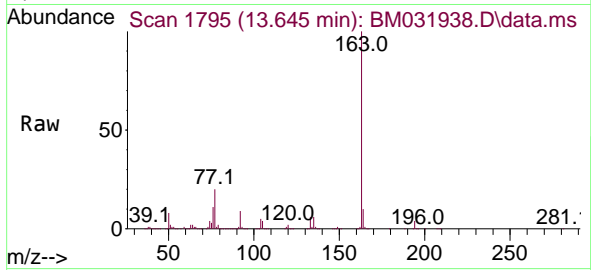


#47
 Dimethylphthalate
 Concen: 178.364 ng/ul
 RT: 13.645 min Scan# 1795
 Delta R.T. 0.018 min
 Lab File: BM031938.D
 Acq: 28 Aug 2021 18:42

Instrument :
 BNA_M
 ClientSampled :

Tgt Ion:163 Resp: 4200239

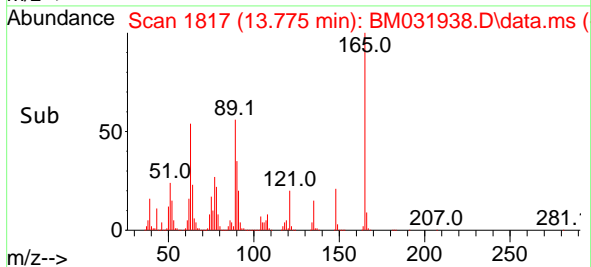
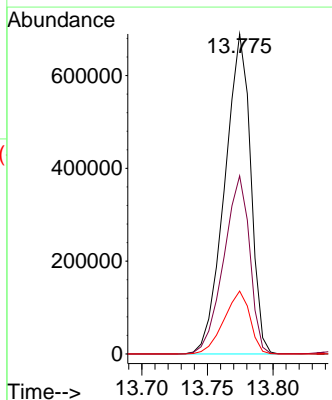
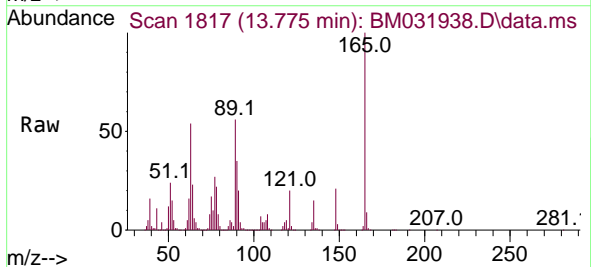
Ion	Ratio	Lower	Upper
163	100		
194	4.4	3.2	4.8
164	10.2	8.2	12.4

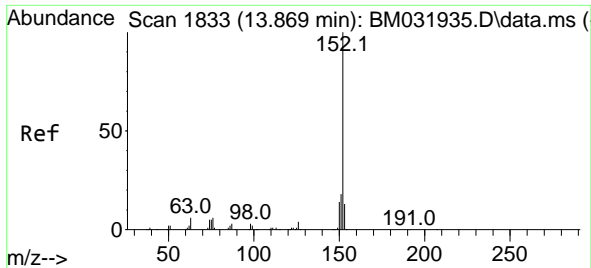


#48
 2,6-Dinitrotoluene
 Concen: 209.021 ng/ul
 RT: 13.775 min Scan# 1817
 Delta R.T. 0.024 min
 Lab File: BM031938.D
 Acq: 28 Aug 2021 18:42

Tgt Ion:165 Resp: 948015

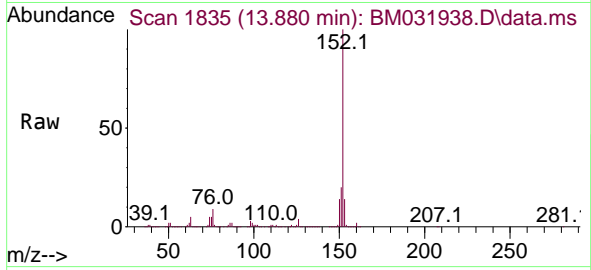
Ion	Ratio	Lower	Upper
165	100		
89	55.7	48.6	72.8
121	19.6	18.1	27.1



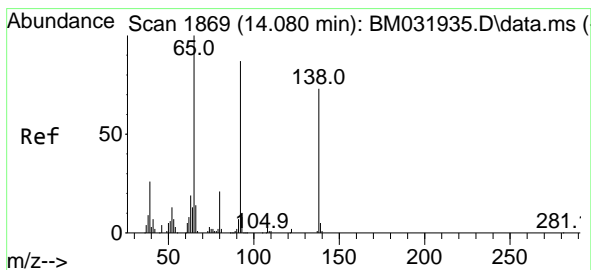
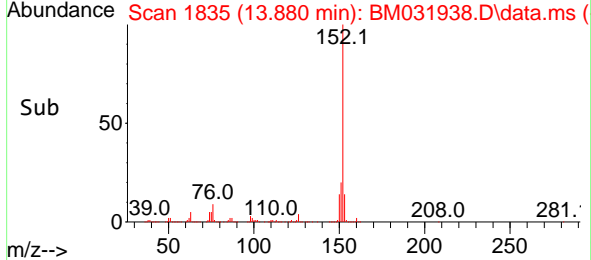
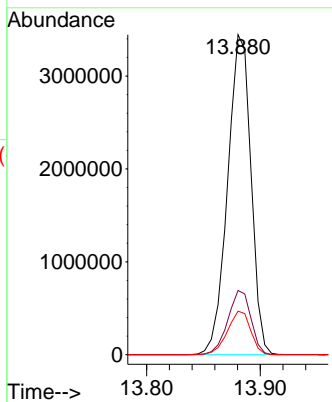


#50
 Acenaphthylene
 Concen: 173.440 ng/ul
 RT: 13.880 min Scan# 1835
 Delta R.T. 0.012 min
 Lab File: BM031938.D
 Acq: 28 Aug 2021 18:42

Instrument :
 BNA_M
 ClientSampled :

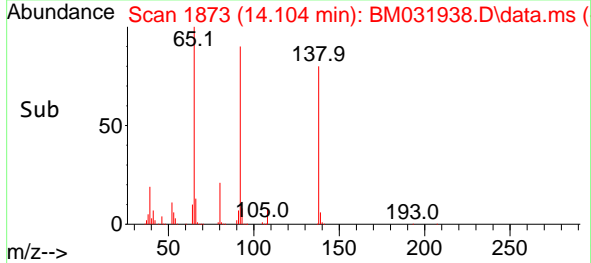
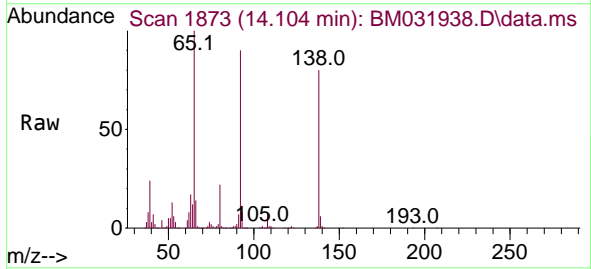
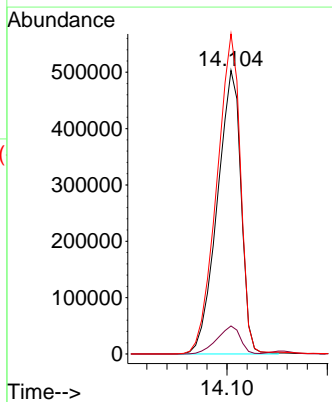


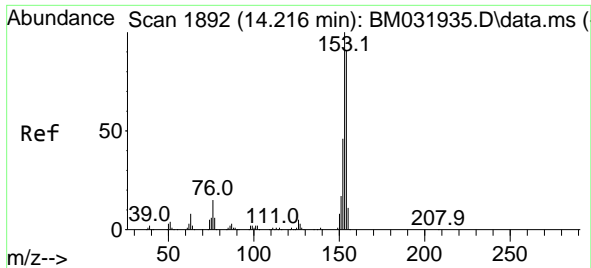
Tgt Ion:152 Resp: 4919742
 Ion Ratio Lower Upper
 152 100
 151 20.0 16.2 24.2
 153 13.6 10.2 15.4



#51
 3-Nitroaniline
 Concen: 174.406 ng/ul
 RT: 14.104 min Scan# 1873
 Delta R.T. 0.024 min
 Lab File: BM031938.D
 Acq: 28 Aug 2021 18:42

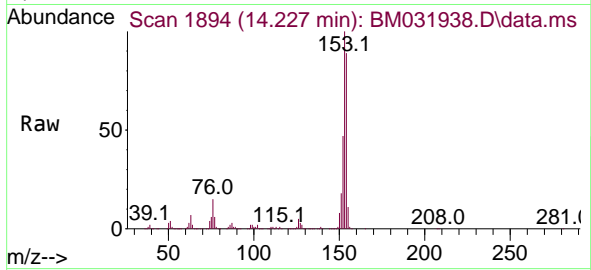
Tgt Ion:138 Resp: 826443
 Ion Ratio Lower Upper
 138 100
 108 9.9 7.4 11.2
 92 112.9 96.5 144.7



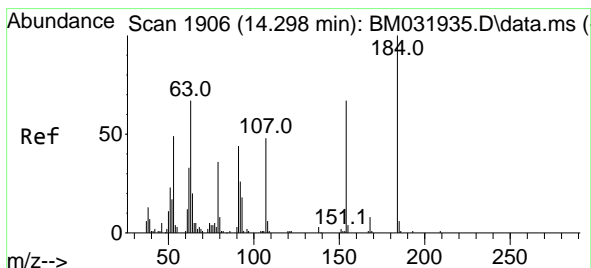
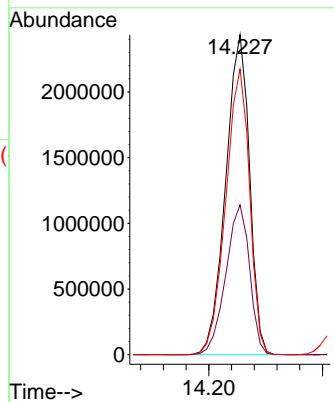
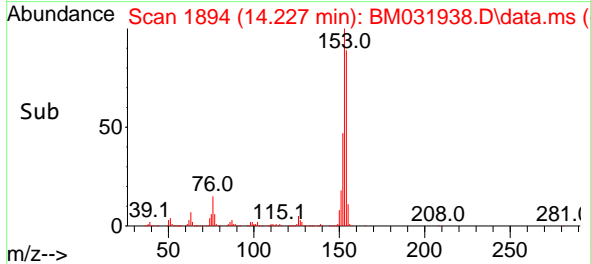


#52
 Acenaphthene
 Concen: 171.252 ng/u1
 RT: 14.227 min Scan# 1894
 Delta R.T. 0.012 min
 Lab File: BM031938.D
 Acq: 28 Aug 2021 18:42

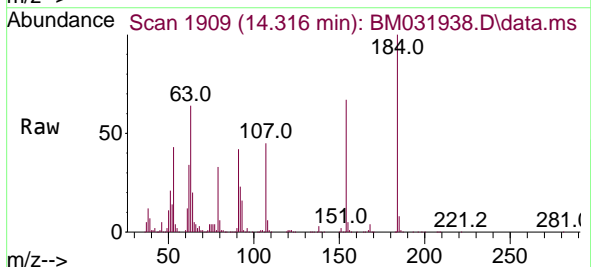
Instrument :
 BNA_M
 ClientSampled :



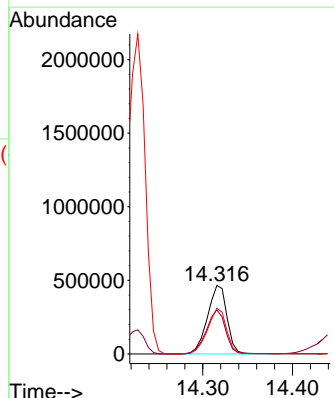
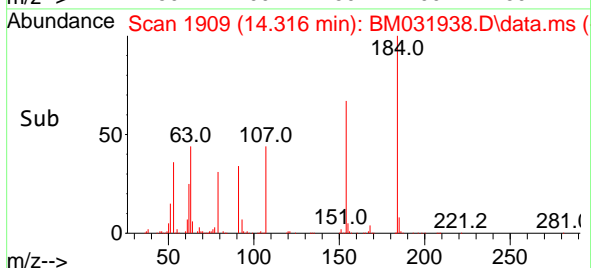
Tgt Ion:153 Resp: 3543654
 Ion Ratio Lower Upper
 153 100
 152 46.8 37.4 56.2
 154 89.2 69.4 104.0

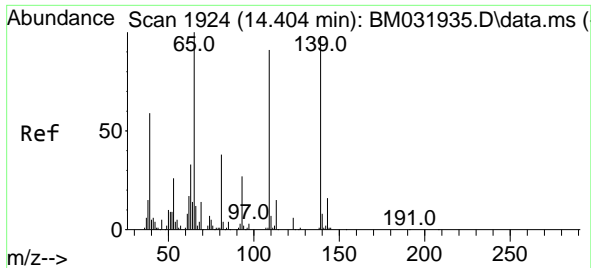


#53
 2,4-Dinitrophenol
 Concen: 260.276 ng/u1
 RT: 14.316 min Scan# 1909
 Delta R.T. 0.018 min
 Lab File: BM031938.D
 Acq: 28 Aug 2021 18:42



Tgt Ion:184 Resp: 703440
 Ion Ratio Lower Upper
 184 100
 63 64.4 56.9 85.3
 154 66.7 49.0 73.6

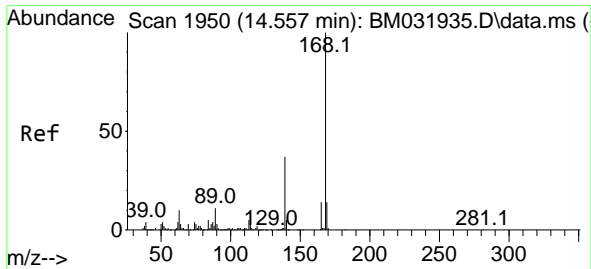
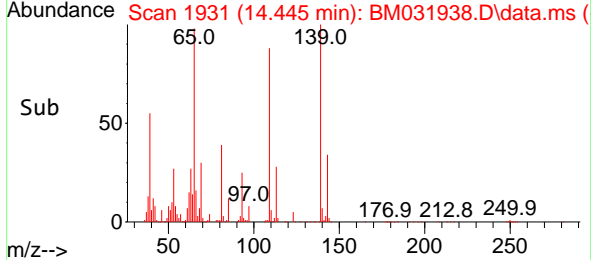
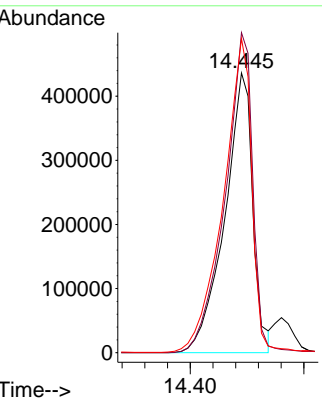
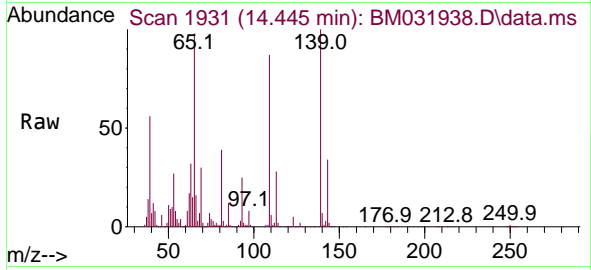




#55
 4-Nitrophenol
 Concen: 209.259 ng/uI
 RT: 14.445 min Scan# 1931
 Delta R.T. 0.041 min
 Lab File: BM031938.D
 Acq: 28 Aug 2021 18:42

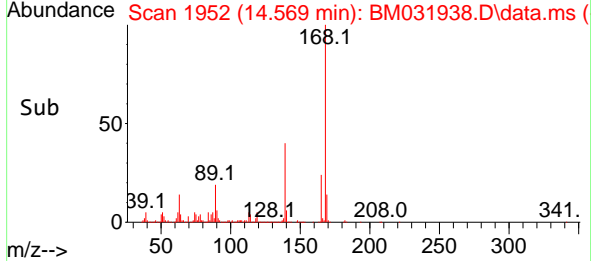
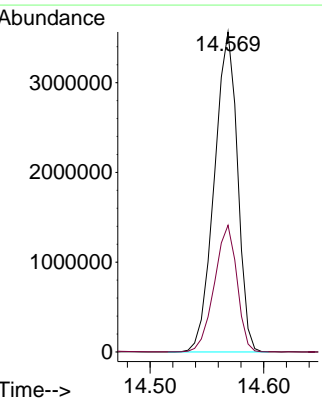
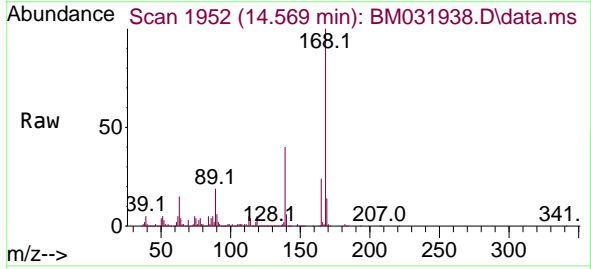
Instrument :
 BNA_M
 ClientSampled :

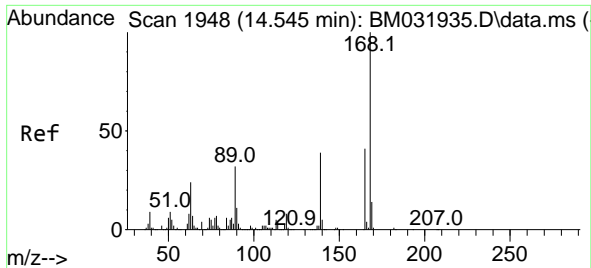
Tgt Ion	Resp	Lower	Upper
109	742978		
109	100		
139	114.4	100.3	150.5
65	112.3	104.6	156.8



#56
 Dibenzofuran
 Concen: 173.342 ng/uI
 RT: 14.569 min Scan# 1952
 Delta R.T. 0.012 min
 Lab File: BM031938.D
 Acq: 28 Aug 2021 18:42

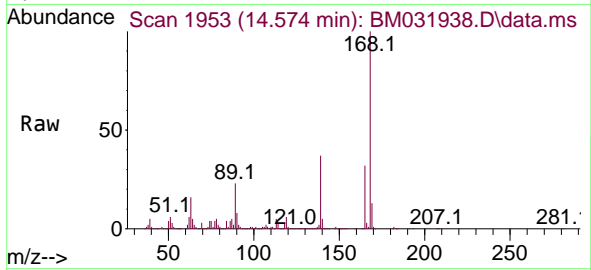
Tgt Ion	Resp	Lower	Upper
168	5050593		
168	100		
139	39.6	29.5	44.3



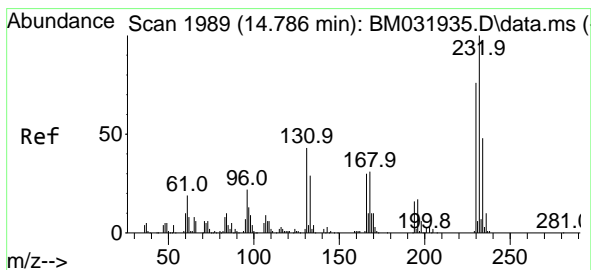
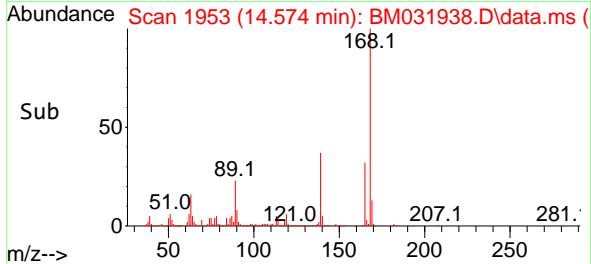
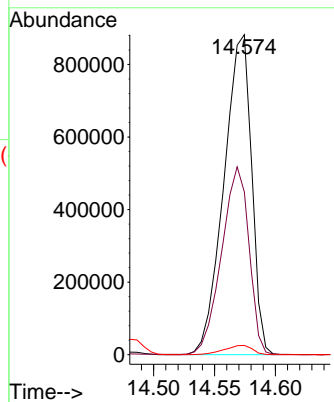


#57
 2,4-Dinitrotoluene
 Concen: 221.143 ng/uI
 RT: 14.574 min Scan# 1953
 Delta R.T. 0.029 min
 Lab File: BM031938.D
 Acq: 28 Aug 2021 18:42

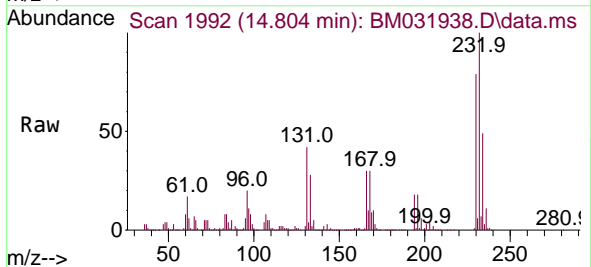
Instrument :
 BNA_M
 ClientSampled :



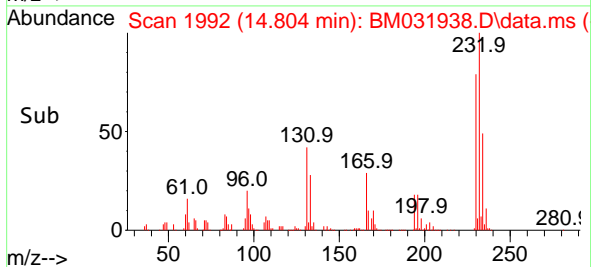
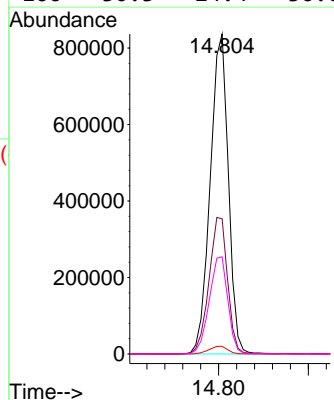
Tgt Ion:165 Resp: 1398330
 Ion Ratio Lower Upper
 165 100
 63 50.9 37.6 56.4
 182 2.9 1.8 2.8#

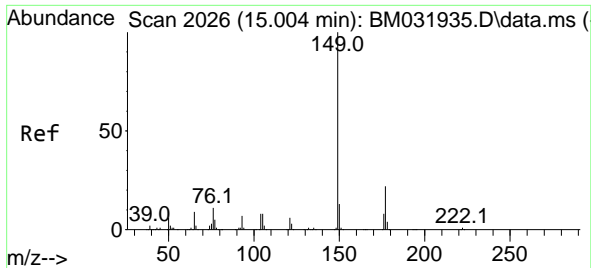


#58
 2,3,4,6-Tetrachlorophenol
 Concen: 202.298 ng/uI
 RT: 14.804 min Scan# 1992
 Delta R.T. 0.018 min
 Lab File: BM031938.D
 Acq: 28 Aug 2021 18:42



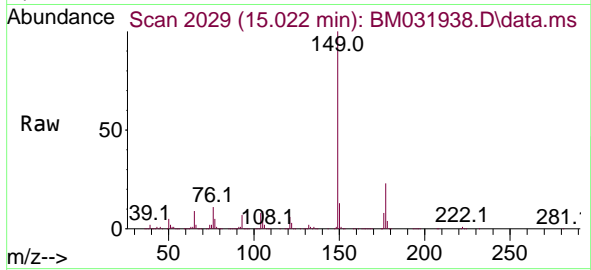
Tgt Ion:232 Resp: 1171435
 Ion Ratio Lower Upper
 232 100
 131 42.3 35.0 52.6
 130 2.4 1.7 2.5
 166 30.3 24.4 36.6



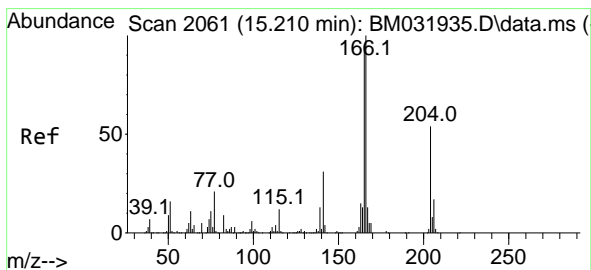
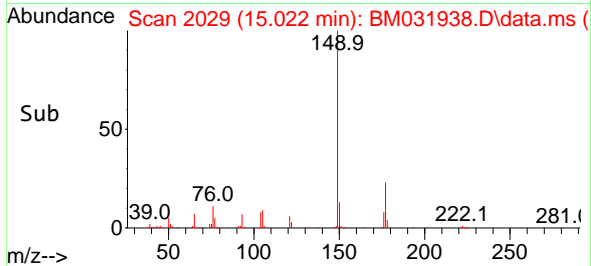
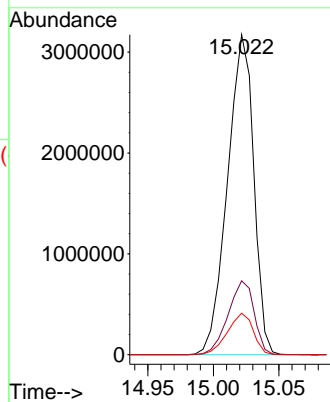


#59
 Diethylphthalate
 Concen: 188.616 ng/uI
 RT: 15.022 min Scan# 2029
 Delta R.T. 0.018 min
 Lab File: BM031938.D
 Acq: 28 Aug 2021 18:42

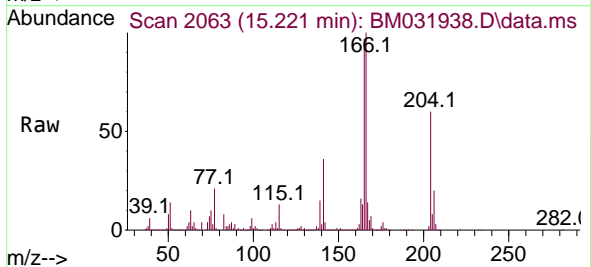
Instrument :
 BNA_M
 ClientSampled :



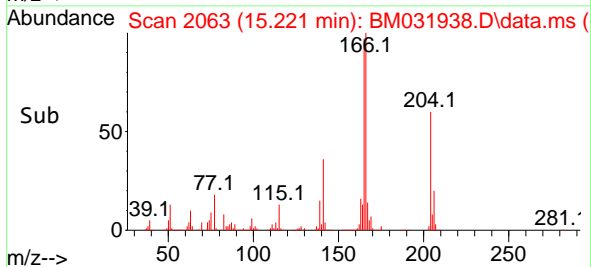
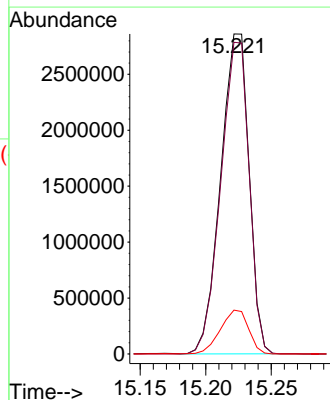
Tgt Ion:149 Resp: 4408377
 Ion Ratio Lower Upper
 149 100
 177 23.1 17.0 25.4
 150 12.9 9.9 14.9

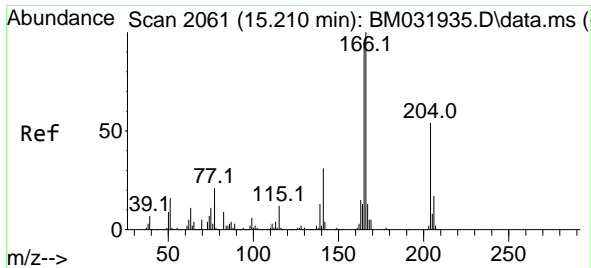


#61
 Fluorene
 Concen: 179.751 ng/uI
 RT: 15.221 min Scan# 2063
 Delta R.T. 0.012 min
 Lab File: BM031938.D
 Acq: 28 Aug 2021 18:42



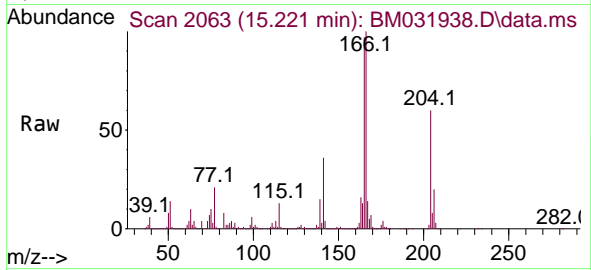
Tgt Ion:166 Resp: 4313805
 Ion Ratio Lower Upper
 166 100
 165 97.4 78.4 117.6
 167 13.7 10.6 15.8



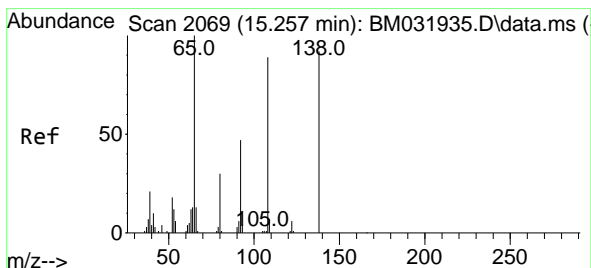
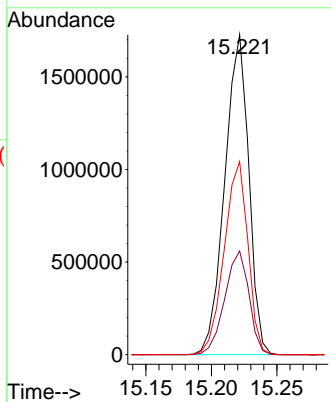
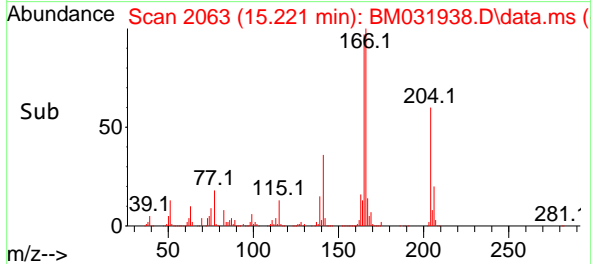


#62
 4-Chlorophenyl-phenylether
 Concen: 182.336 ng/ul
 RT: 15.221 min Scan# 2063
 Delta R.T. 0.012 min
 Lab File: BM031938.D
 Acq: 28 Aug 2021 18:42

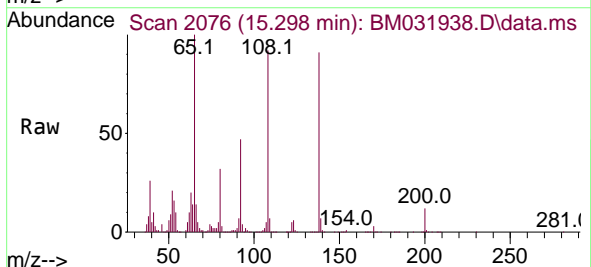
Instrument :
 BNA_M
 ClientSampled :



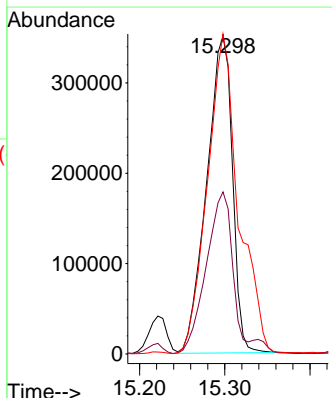
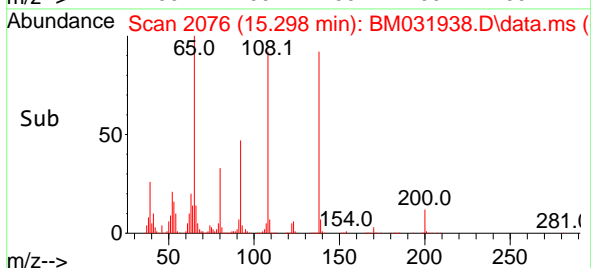
Tgt Ion:204 Resp: 2202300
 Ion Ratio Lower Upper
 204 100
 206 32.4 26.0 39.0
 141 60.3 45.6 68.4

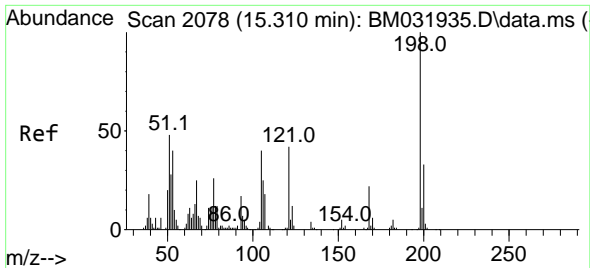


#63
 4-Nitroaniline
 Concen: 162.959 ng/ul
 RT: 15.298 min Scan# 2076
 Delta R.T. 0.041 min
 Lab File: BM031938.D
 Acq: 28 Aug 2021 18:42



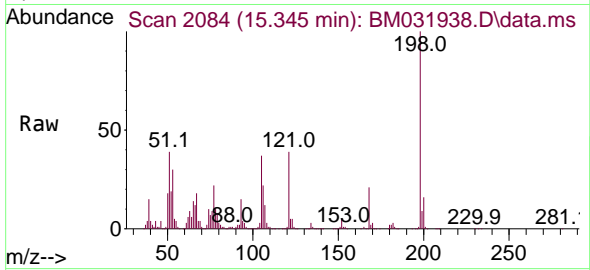
Tgt Ion:138 Resp: 735599
 Ion Ratio Lower Upper
 138 100
 92 51.0 41.5 62.3
 108 100.7 61.4 92.2#



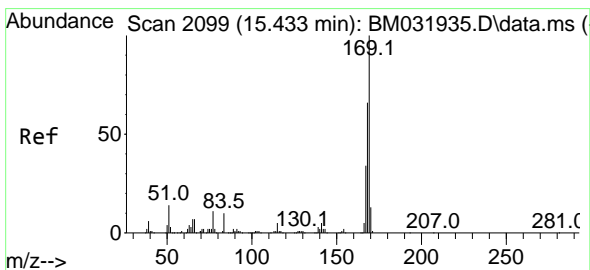
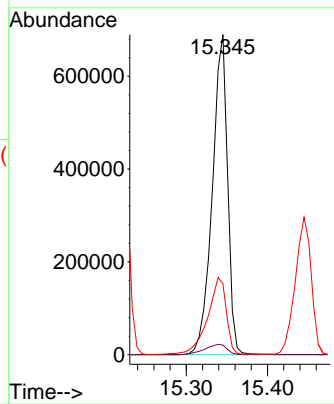
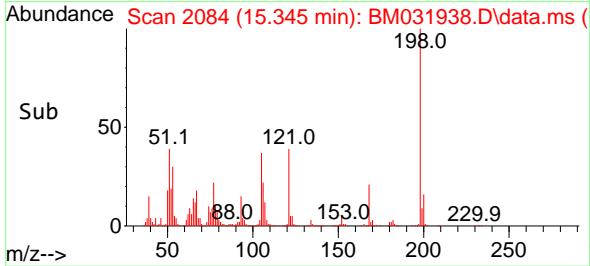


#66
 4,6-Dinitro-2-methylphenol
 Concen: 24.060 ng/ul
 RT: 15.345 min Scan# 2084
 Delta R.T. 0.035 min
 Lab File: BM031938.D
 Acq: 28 Aug 2021 18:42

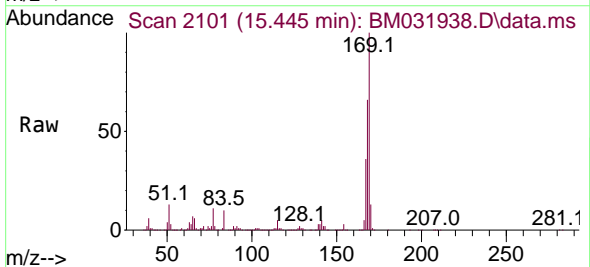
Instrument :
 BNA_M
 ClientSampled :



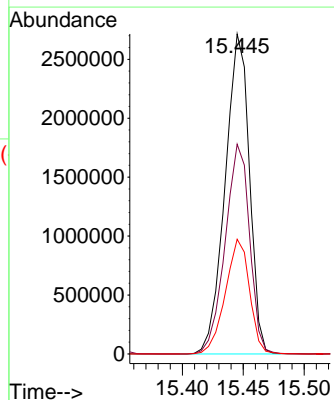
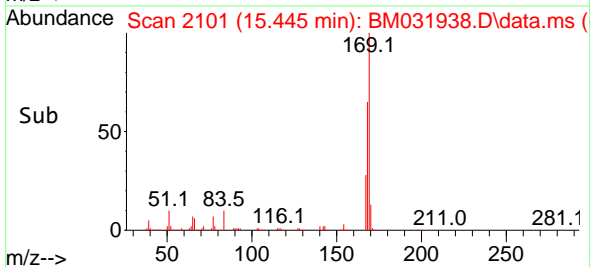
Tgt Ion:198 Resp: 903154
 Ion Ratio Lower Upper
 198 100
 182 3.0 3.8 5.6#
 77 22.1 20.1 30.1

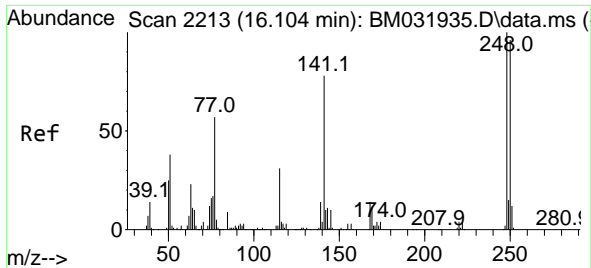


#67
 N-Nitrosodiphenylamine
 Concen: 20.811 ng/ul
 RT: 15.445 min Scan# 2101
 Delta R.T. 0.012 min
 Lab File: BM031938.D
 Acq: 28 Aug 2021 18:42



Tgt Ion:169 Resp: 3762236
 Ion Ratio Lower Upper
 169 100
 168 65.5 53.8 80.6
 167 35.9 28.6 43.0



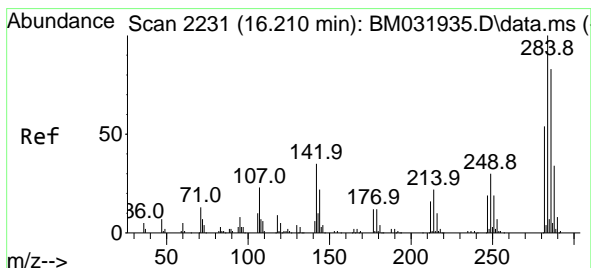
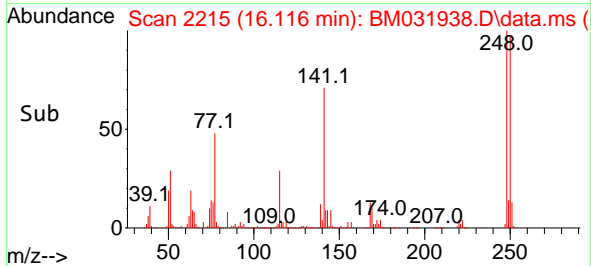
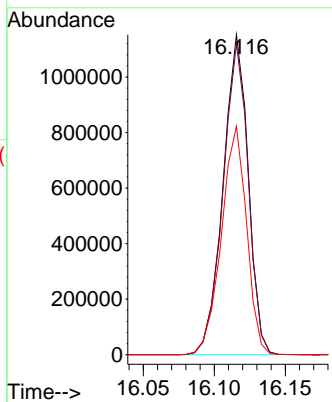
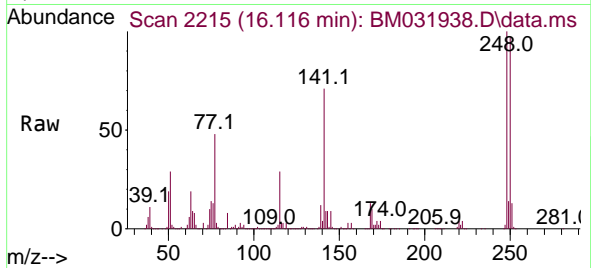


#68
 4-Bromophenyl-phenylether
 Concen: 22.196 ng/ul
 RT: 16.116 min Scan# 2215
 Delta R.T. 0.012 min
 Lab File: BM031938.D
 Acq: 28 Aug 2021 18:42

Instrument :
 BNA_M
 ClientSampled :

Tgt Ion:248 Resp: 1417560

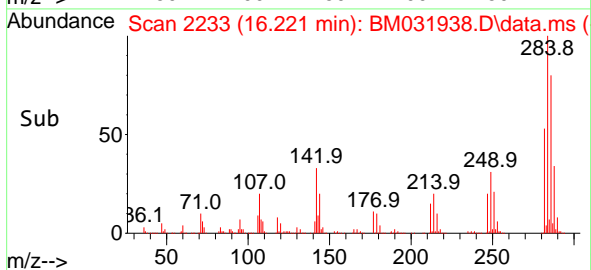
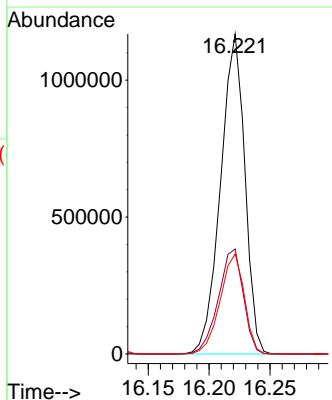
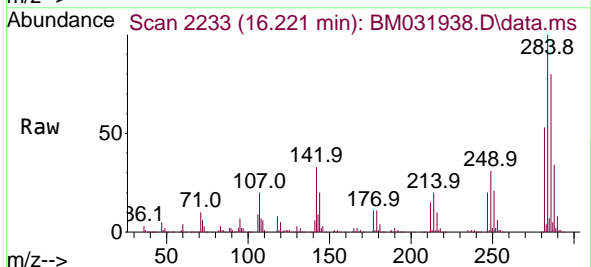
Ion	Ratio	Lower	Upper
248	100		
250	97.2	78.6	118.0
141	71.4	56.2	84.2

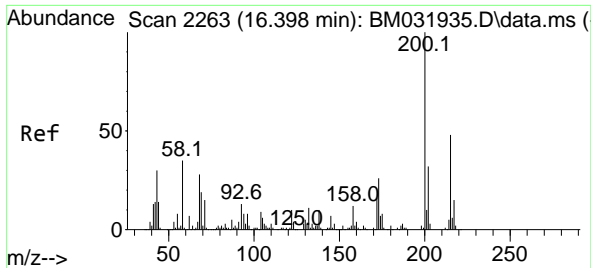


#69
 Hexachlorobenzene
 Concen: 22.319 ng/ul
 RT: 16.221 min Scan# 2233
 Delta R.T. 0.012 min
 Lab File: BM031938.D
 Acq: 28 Aug 2021 18:42

Tgt Ion:284 Resp: 1617751

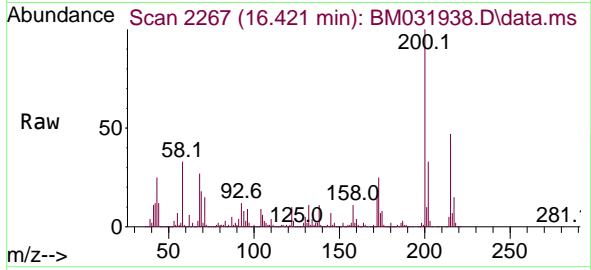
Ion	Ratio	Lower	Upper
284	100		
142	32.8	29.0	43.4
249	31.3	25.0	37.4



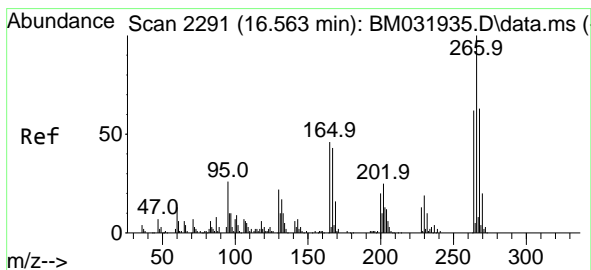
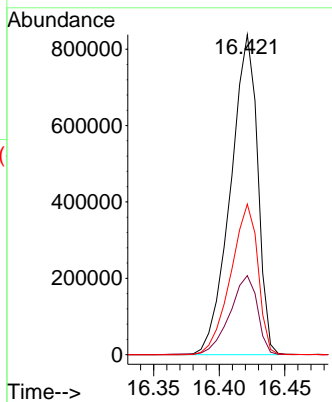
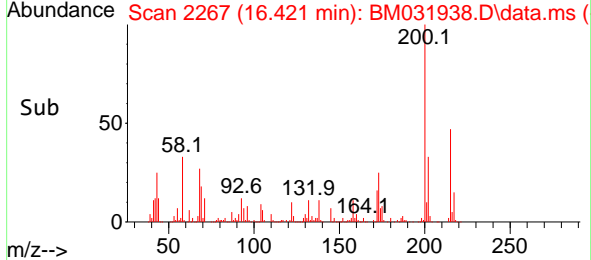


#70
 Atrazine
 Concen: 18.742 ng/uI
 RT: 16.421 min Scan# 2267
 Delta R.T. 0.024 min
 Lab File: BM031938.D
 Acq: 28 Aug 2021 18:42

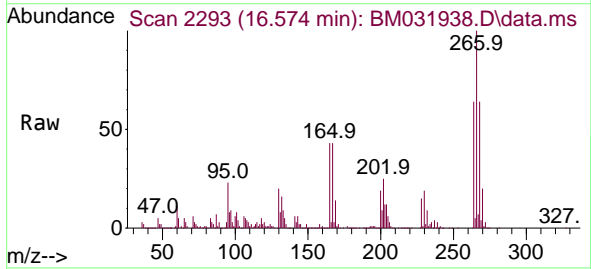
Instrument :
 BNA_M
 ClientSampled :



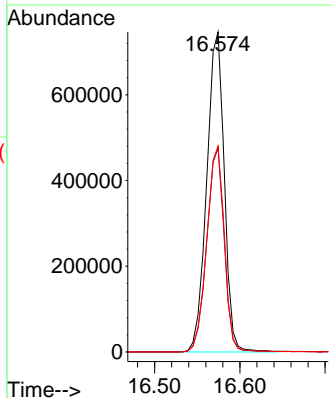
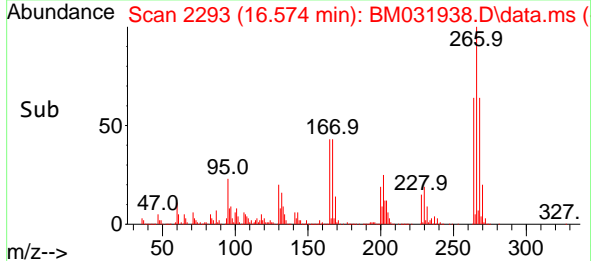
Tgt Ion:200 Resp: 1206735
 Ion Ratio Lower Upper
 200 100
 173 24.7 18.7 28.1
 215 47.0 38.9 58.3

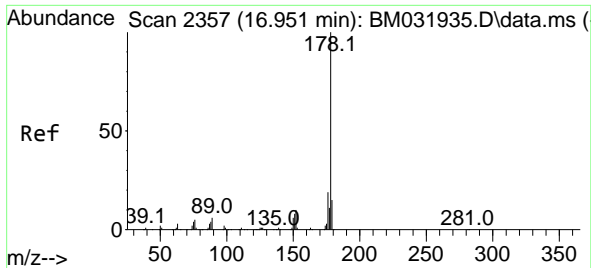


#71
 Pentachlorophenol
 Concen: 24.222 ng/uI
 RT: 16.574 min Scan# 2293
 Delta R.T. 0.012 min
 Lab File: BM031938.D
 Acq: 28 Aug 2021 18:42



Tgt Ion:266 Resp: 1066919
 Ion Ratio Lower Upper
 266 100
 264 63.7 48.2 72.4
 268 64.3 51.6 77.4



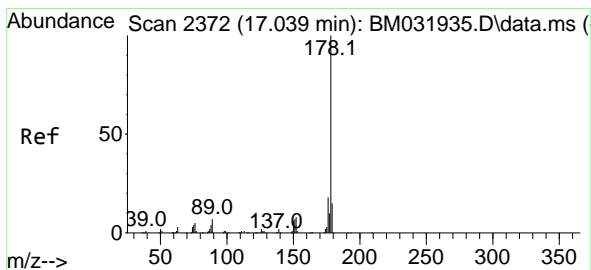
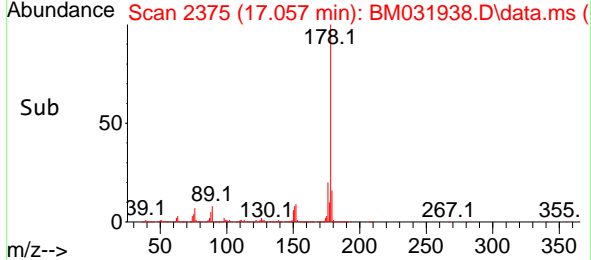
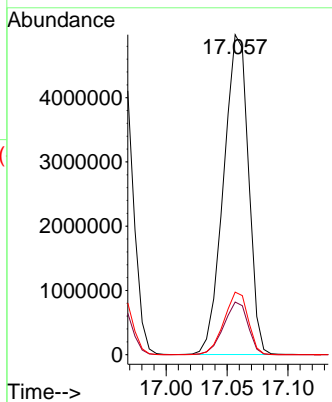
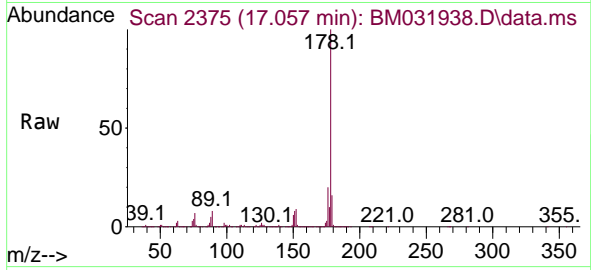


#72
 Phenanthrene
 Concen: 21.882 ng/u1
 RT: 17.057 min Scan# 2375
 Delta R.T. 0.106 min
 Lab File: BM031938.D
 Acq: 28 Aug 2021 18:42

Instrument :
 BNA_M
 ClientSampled :

Tgt Ion:178 Resp: 7080594

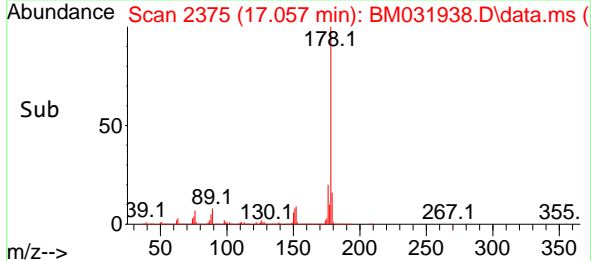
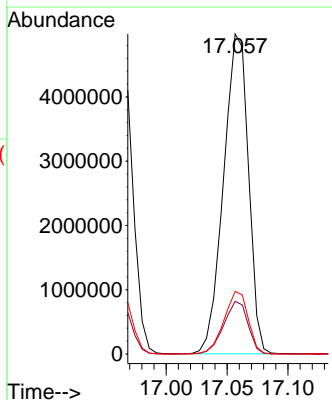
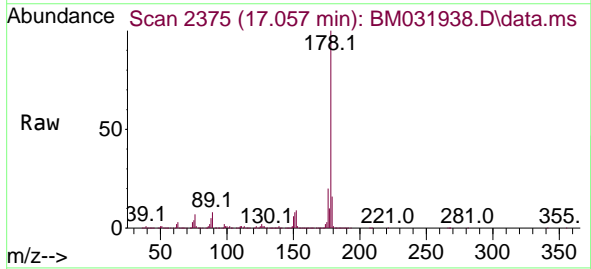
Ion	Ratio	Lower	Upper
178	100		
179	16.4	12.1	18.1
176	19.6	15.2	22.8

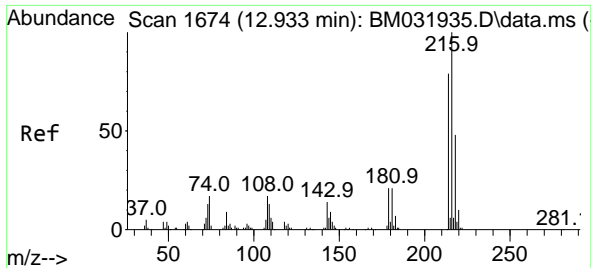


#74
 Anthracene
 Concen: 21.298 ng/u1
 RT: 17.057 min Scan# 2375
 Delta R.T. 0.018 min
 Lab File: BM031938.D
 Acq: 28 Aug 2021 18:42

Tgt Ion:178 Resp: 7080594

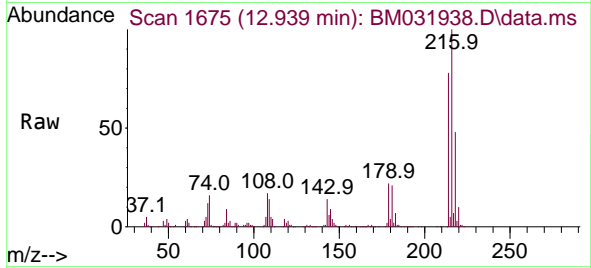
Ion	Ratio	Lower	Upper
178	100		
179	16.4	12.1	18.1
176	19.6	15.2	22.8



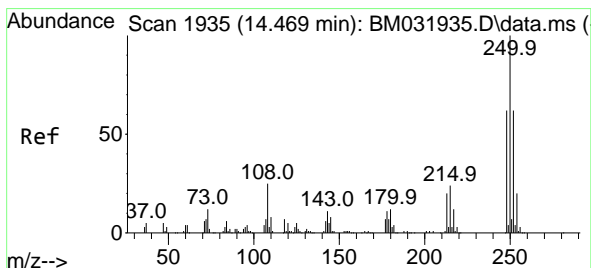
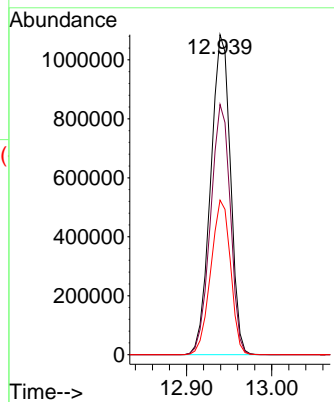
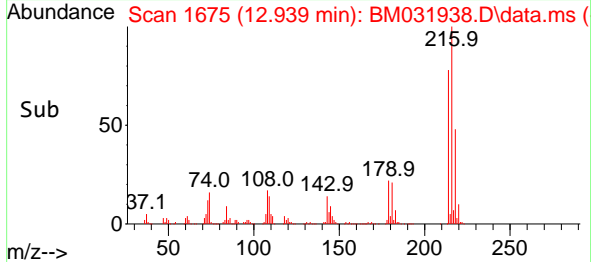


#75
 1,2,3,4-Tetrachlorobenzene
 Concen: 18.630 ng/uL
 RT: 12.939 min Scan# 1675
 Delta R.T. 0.006 min
 Lab File: BM031938.D
 Acq: 28 Aug 2021 18:42

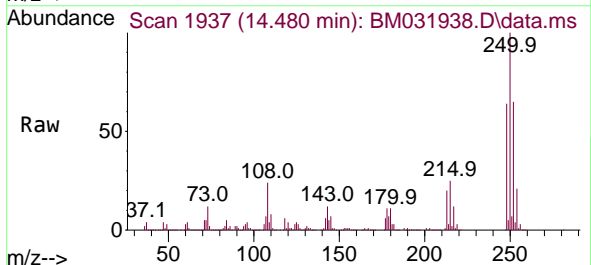
Instrument :
 BNA_M
 ClientSampled :



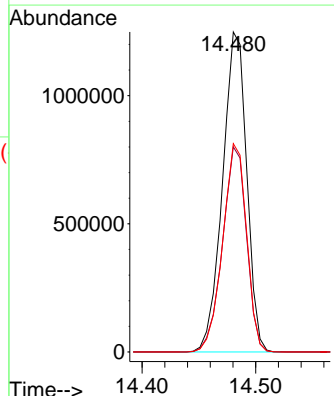
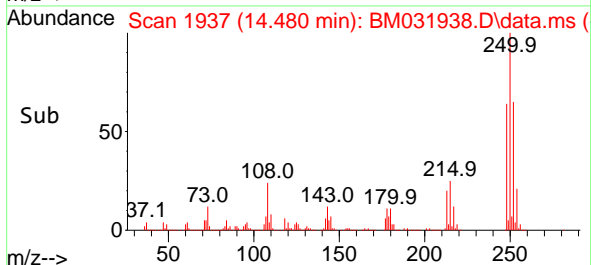
Tgt Ion:216 Resp: 1751483
 Ion Ratio Lower Upper
 216 100
 214 78.2 61.9 92.9
 218 48.3 39.5 59.3

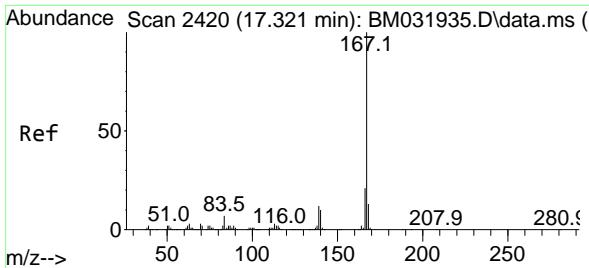


#76
 Pentachlorobenzene
 Concen: 20.052 ng/uL
 RT: 14.480 min Scan# 1937
 Delta R.T. 0.012 min
 Lab File: BM031938.D
 Acq: 28 Aug 2021 18:42



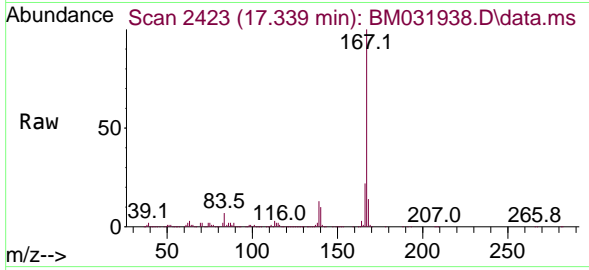
Tgt Ion:250 Resp: 1844670
 Ion Ratio Lower Upper
 250 100
 248 64.1 50.2 75.4
 252 65.1 52.2 78.2



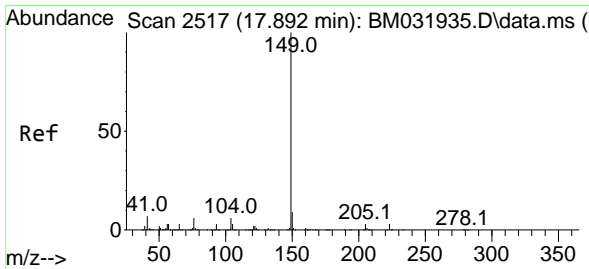
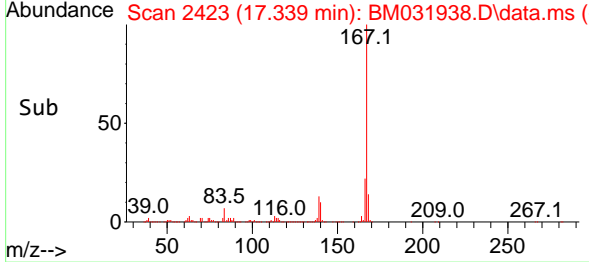
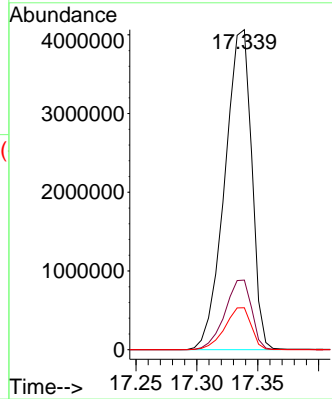


#77
 Carbazole
 Concen: 21.661 ng/u1
 RT: 17.339 min Scan# 2423
 Delta R.T. 0.018 min
 Lab File: BM031938.D
 Acq: 28 Aug 2021 18:42

Instrument :
 BNA_M
 ClientSampled :

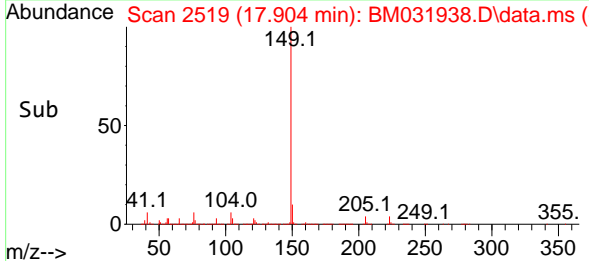
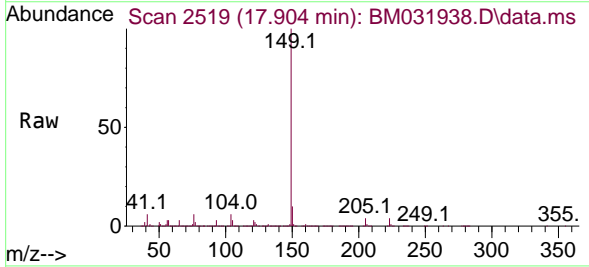
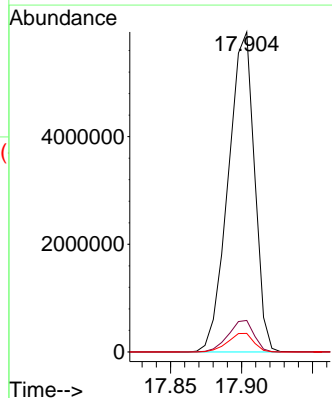


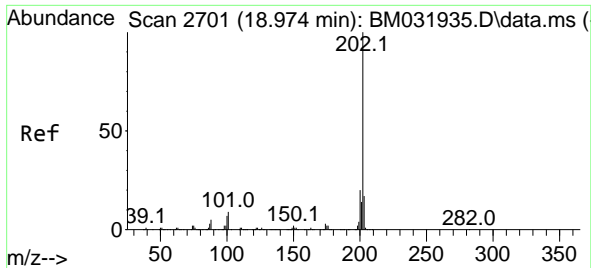
Tgt Ion:167 Resp: 6260098
 Ion Ratio Lower Upper
 167 100
 166 21.8 17.0 25.6
 139 13.1 9.9 14.9



#78
 Di-n-butylphthalate
 Concen: 22.947 ng/u1
 RT: 17.904 min Scan# 2519
 Delta R.T. 0.012 min
 Lab File: BM031938.D
 Acq: 28 Aug 2021 18:42

Tgt Ion:149 Resp: 7642990
 Ion Ratio Lower Upper
 149 100
 150 9.8 7.3 10.9
 104 5.8 4.1 6.1



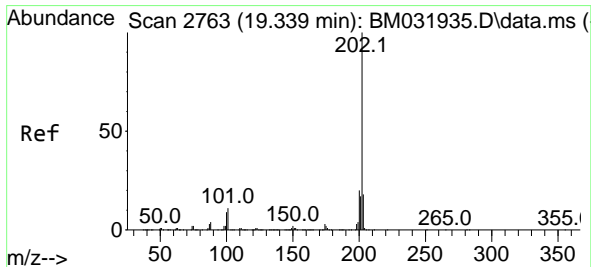
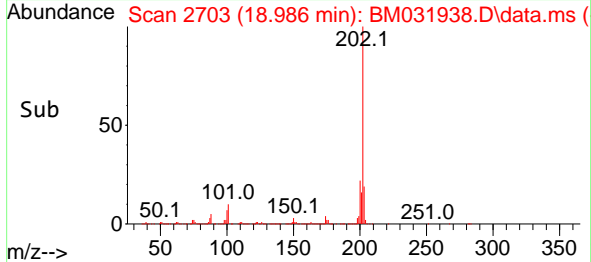
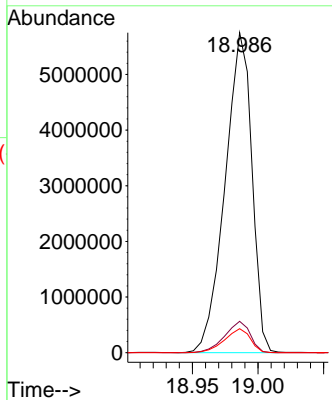
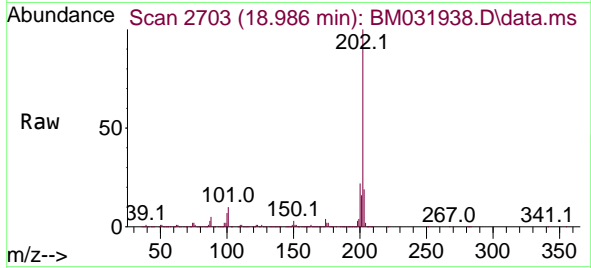


#80
 Fluoranthene
 Concen: 141.229 ng/u1
 RT: 18.986 min Scan# 2703
 Delta R.T. 0.012 min
 Lab File: BM031938.D
 Acq: 28 Aug 2021 18:42

Instrument :
 BNA_M
 ClientSampled :

Tgt Ion:202 Resp: 8183720

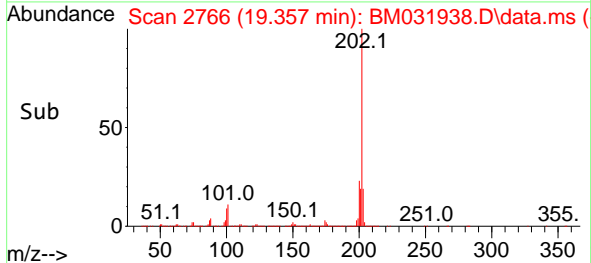
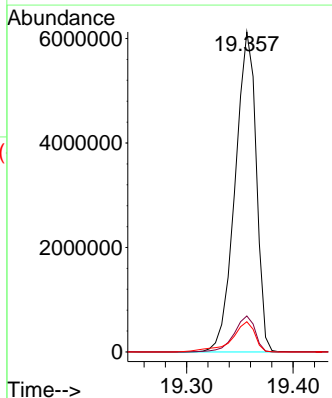
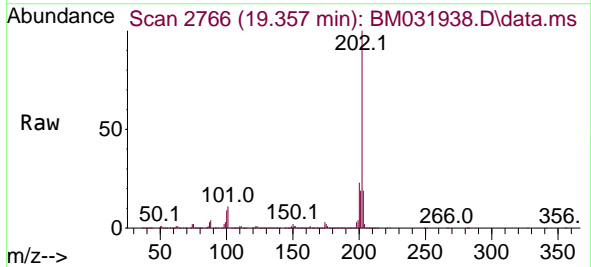
Ion	Ratio	Lower	Upper
202	100		
101	9.8	8.8	13.2
100	7.5	6.8	10.2

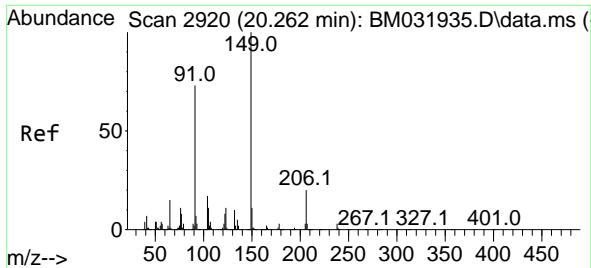


#82
 Pyrene
 Concen: 140.672 ng/u1
 RT: 19.357 min Scan# 2766
 Delta R.T. 0.018 min
 Lab File: BM031938.D
 Acq: 28 Aug 2021 18:42

Tgt Ion:202 Resp: 8448423

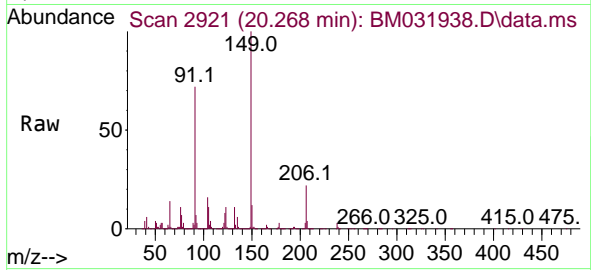
Ion	Ratio	Lower	Upper
202	100		
101	11.3	10.0	15.0
100	9.5	8.5	12.7





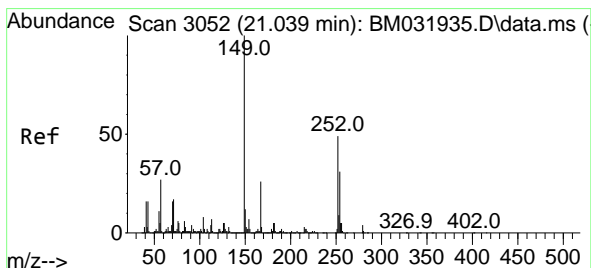
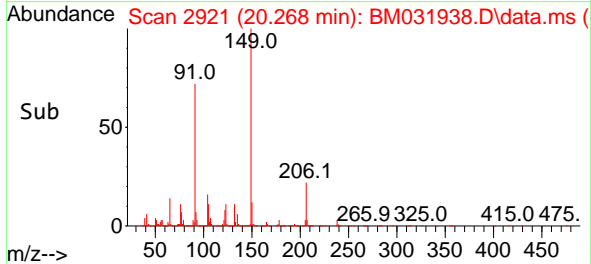
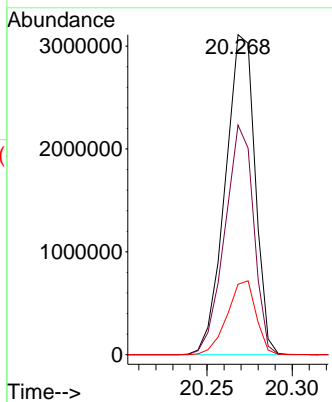
#83
 Butylbenzylphthalate
 Concen: 184.397 ng/ul
 RT: 20.268 min Scan# 2921
 Delta R.T. 0.006 min
 Lab File: BM031938.D
 Acq: 28 Aug 2021 18:42

Instrument :
 BNA_M
 ClientSampled :



Tgt Ion:149 Resp: 3785537

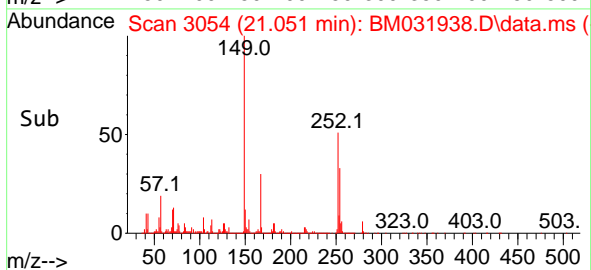
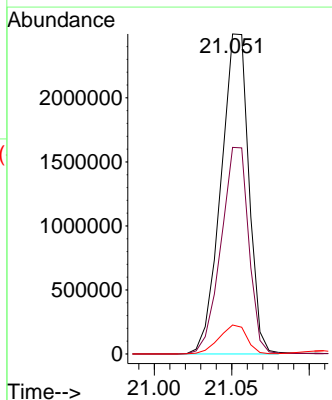
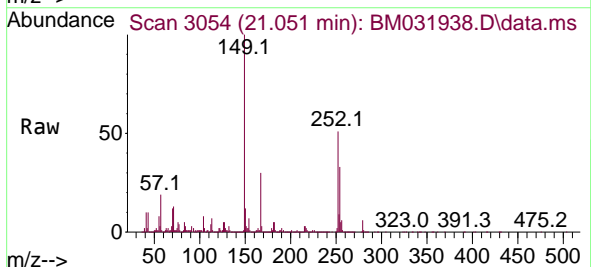
Ion	Ratio	Lower	Upper
149	100		
91	71.8	57.4	86.2
206	22.0	15.9	23.9

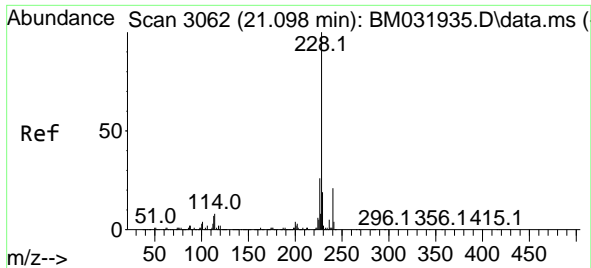


#84
 3,3'-Dichlorobenzidine
 Concen: 201.071 ng/ul
 RT: 21.051 min Scan# 3054
 Delta R.T. 0.012 min
 Lab File: BM031938.D
 Acq: 28 Aug 2021 18:42

Tgt Ion:252 Resp: 3126429

Ion	Ratio	Lower	Upper
252	100		
254	64.6	49.9	74.9
126	9.0	8.9	13.3



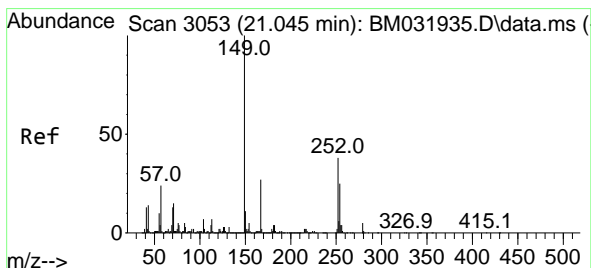
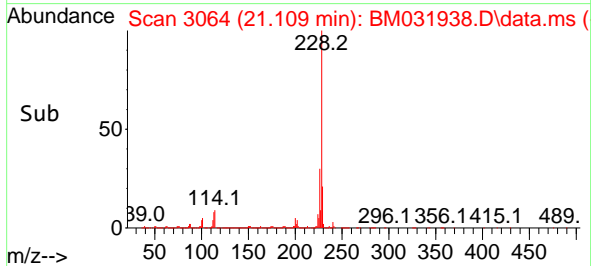
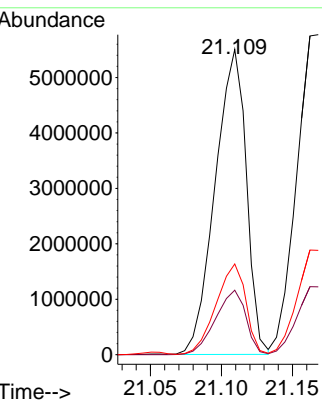
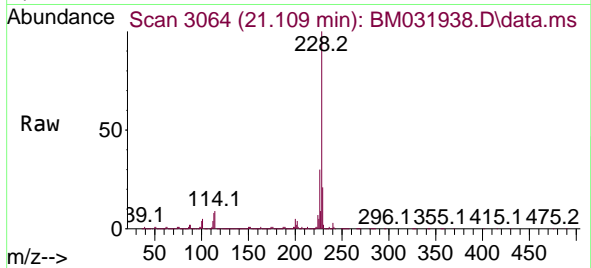


#85
 Benzo(a)anthracene
 Concen: 157.511 ng/ul
 RT: 21.109 min Scan# 3064
 Delta R.T. 0.012 min
 Lab File: BM031938.D
 Acq: 28 Aug 2021 18:42

Instrument :
 BNA_M
 ClientSampled :

Tgt Ion:228 Resp: 8391474

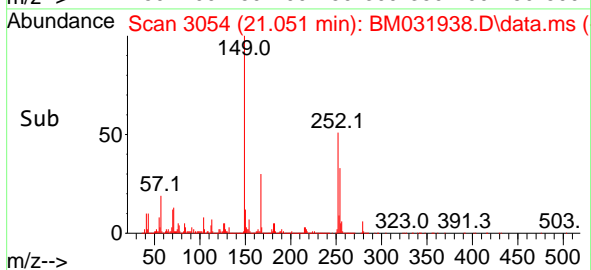
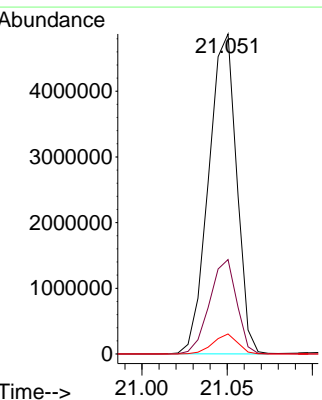
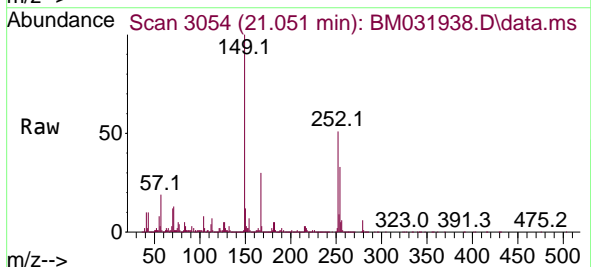
Ion	Ratio	Lower	Upper
228	100		
229	21.1	16.0	24.0
226	29.7	22.2	33.2

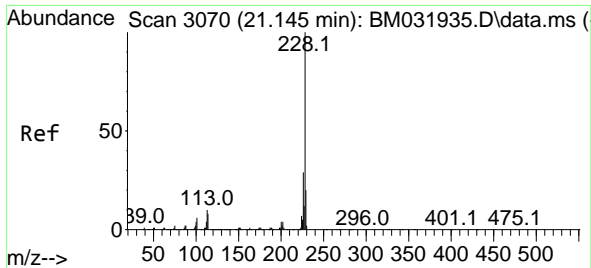


#86
 Bis(2-ethylhexyl)phthalate
 Concen: 184.282 ng/ul
 RT: 21.051 min Scan# 3054
 Delta R.T. 0.006 min
 Lab File: BM031938.D
 Acq: 28 Aug 2021 18:42

Tgt Ion:149 Resp: 5577187

Ion	Ratio	Lower	Upper
149	100		
167	29.5	20.7	31.1
279	6.2	3.0	4.4#



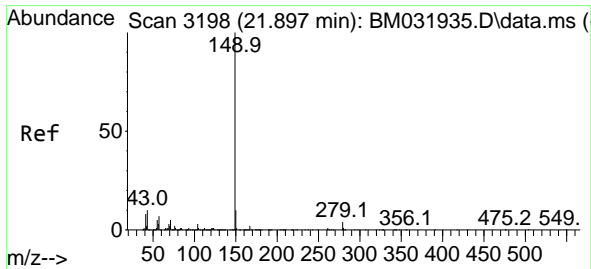
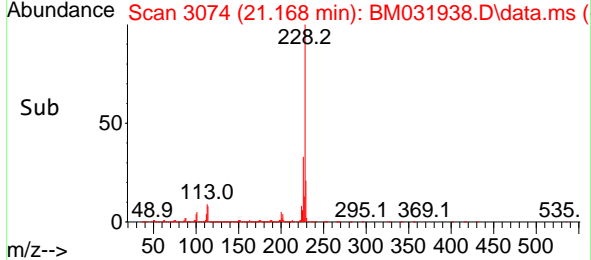
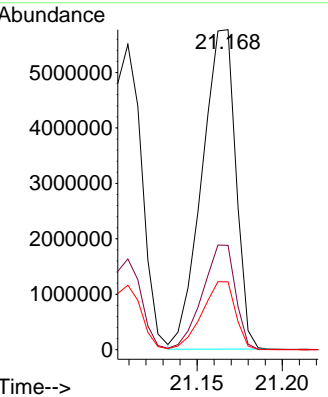
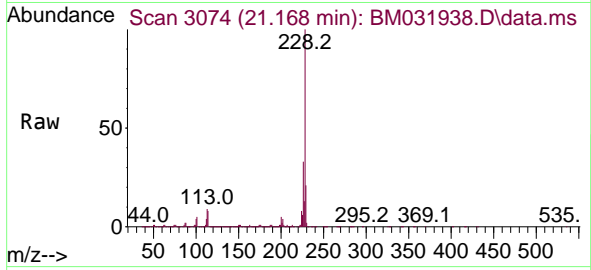


#87
 Chrysene
 Concen: 151.812 ng/u1
 RT: 21.168 min Scan# 3074
 Delta R.T. 0.024 min
 Lab File: BM031938.D
 Acq: 28 Aug 2021 18:42

Instrument :
 BNA_M
 ClientSampled :

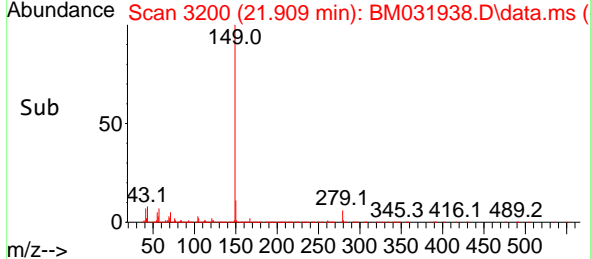
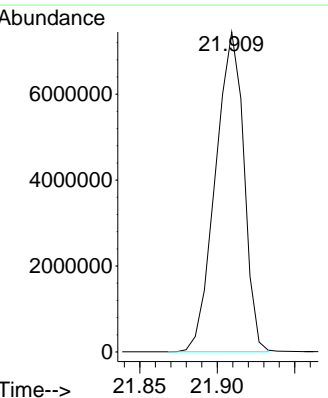
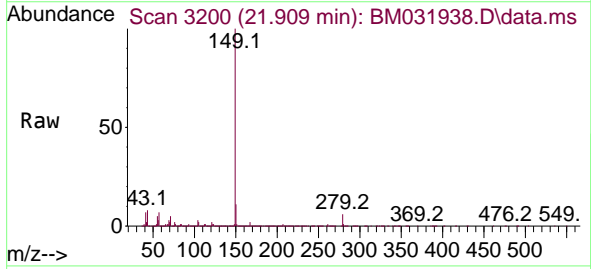
Tgt Ion:228 Resp: 7957877

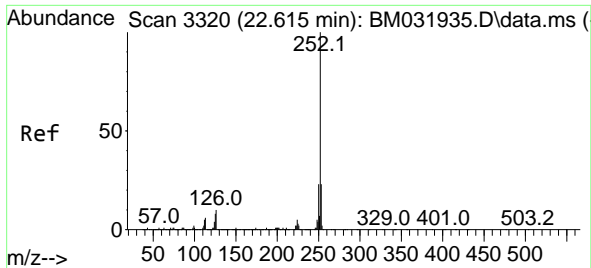
Ion	Ratio	Lower	Upper
228	100		
226	32.6	23.6	35.4
229	21.2	15.9	23.9



#89
 Di-n-octyl phthalate
 Concen: 197.773 ng/u1
 RT: 21.909 min Scan# 3200
 Delta R.T. 0.012 min
 Lab File: BM031938.D
 Acq: 28 Aug 2021 18:42

Tgt Ion:149 Resp: 9486825

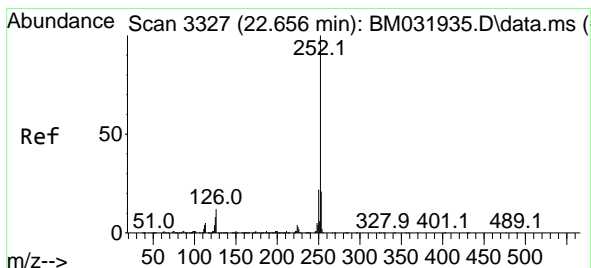
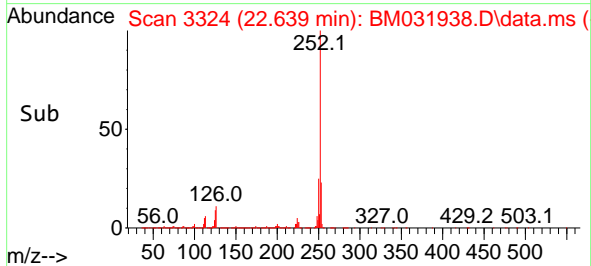
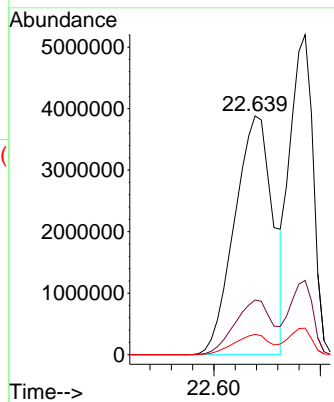
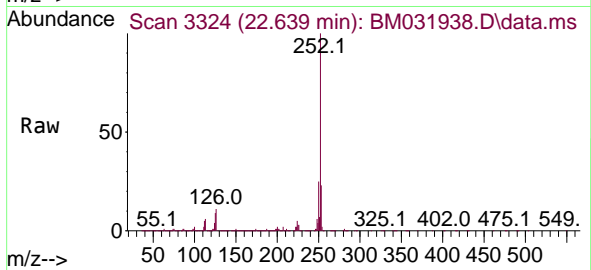




#90
 Benzo(b)fluoranthene
 Concen: 194.560 ng/u1
 RT: 22.639 min Scan# 3324
 Delta R.T. 0.024 min
 Lab File: BM031938.D
 Acq: 28 Aug 2021 18:42

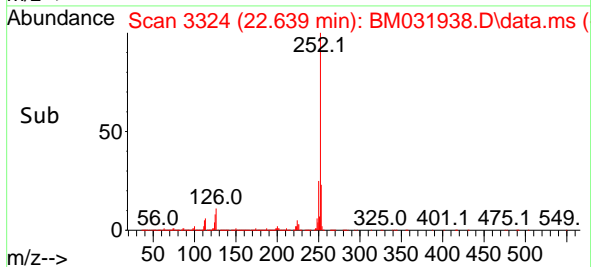
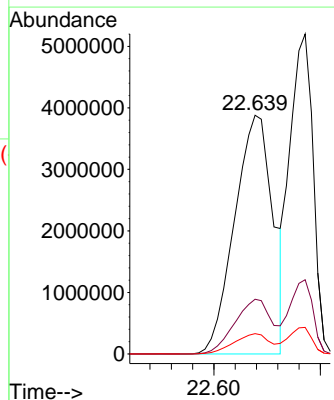
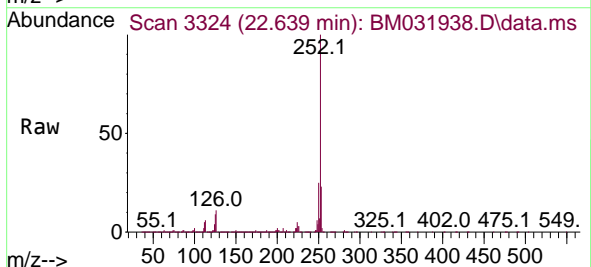
Instrument :
 BNA_M
 ClientSampled :

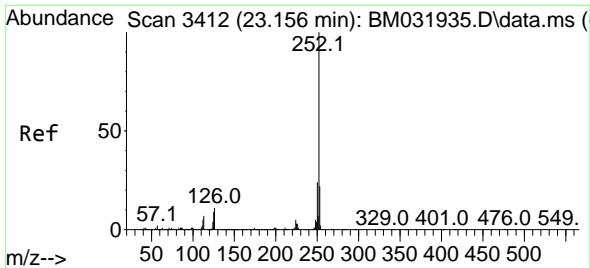
Tgt Ion:252 Resp: 9680434
 Ion Ratio Lower Upper
 252 100
 253 22.9 17.8 26.6
 125 8.5 7.7 11.5



#91
 Benzo(k)fluoranthene
 Concen: 200.167 ng/u1
 RT: 22.639 min Scan# 3324
 Delta R.T. -0.018 min
 Lab File: BM031938.D
 Acq: 28 Aug 2021 18:42

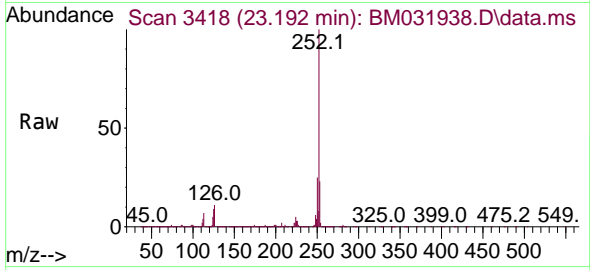
Tgt Ion:252 Resp: 9680434
 Ion Ratio Lower Upper
 252 100
 253 22.9 17.4 26.2
 125 8.5 7.9 11.9



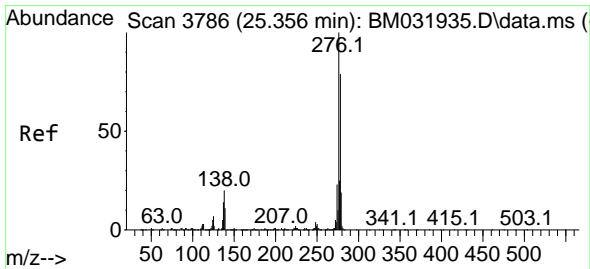
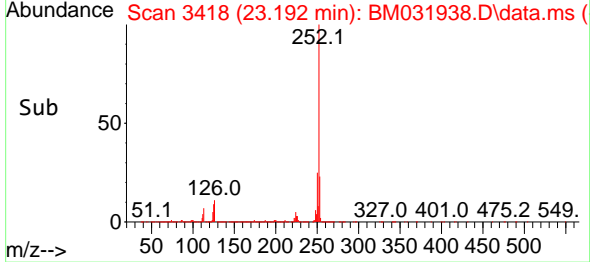
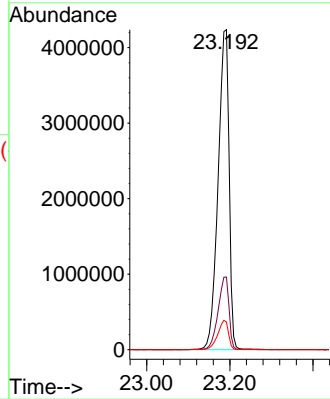


#93
 Benzo(a)pyrene
 Concen: 176.808 ng/u1
 RT: 23.192 min Scan# 3418
 Delta R.T. 0.035 min
 Lab File: BM031938.D
 Acq: 28 Aug 2021 18:42

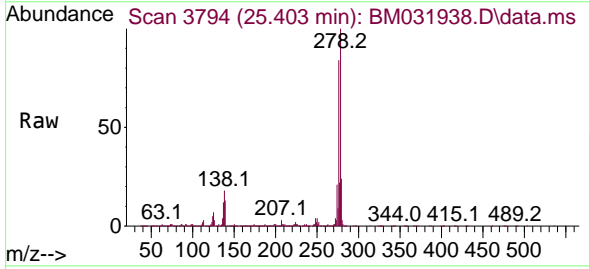
Instrument :
 BNA_M
 ClientSampled :



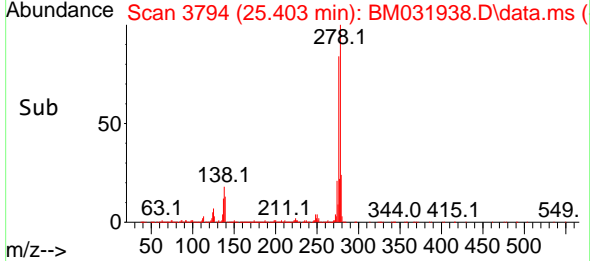
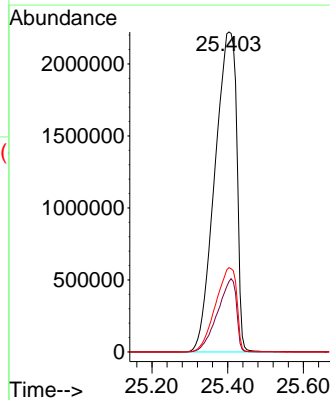
Tgt Ion:252 Resp: 7784837
 Ion Ratio Lower Upper
 252 100
 253 22.7 17.5 26.3
 125 8.7 8.6 13.0

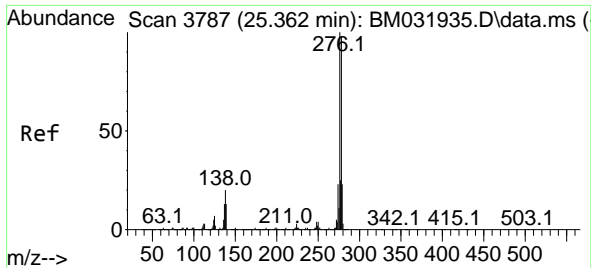


#94
 Indeno(1,2,3-cd)pyrene
 Concen: 162.558 ng/u1
 RT: 25.403 min Scan# 3794
 Delta R.T. 0.047 min
 Lab File: BM031938.D
 Acq: 28 Aug 2021 18:42



Tgt Ion:276 Resp: 8901432
 Ion Ratio Lower Upper
 276 100
 138 22.0 19.5 29.3
 277 26.4 19.6 29.4



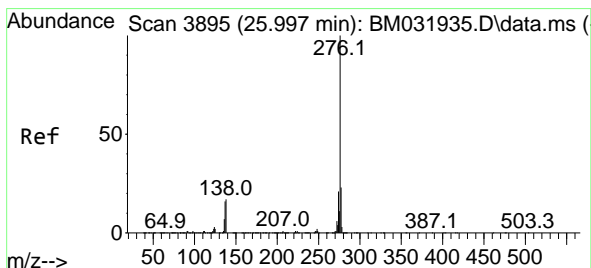
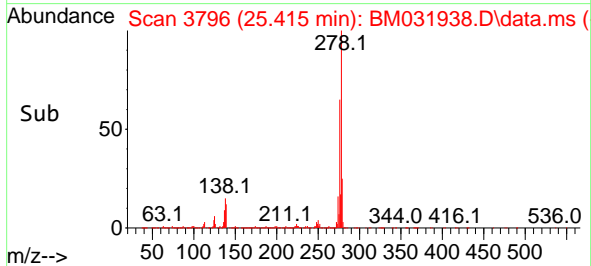
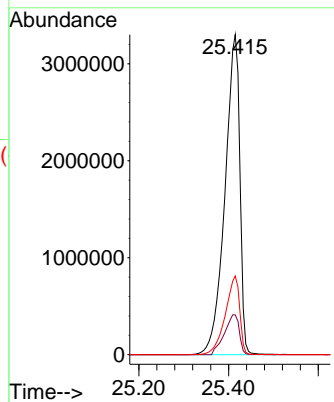
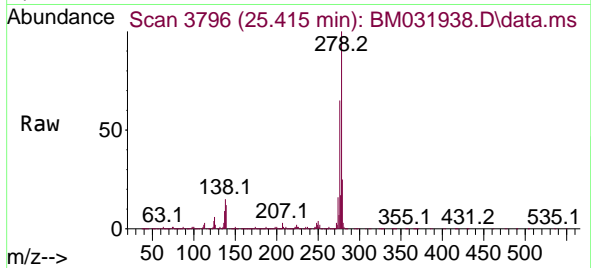


#95
 Dibenzo(a,h)anthracene
 Concen: 166.116 ng/ul
 RT: 25.415 min Scan# 3796
 Delta R.T. 0.053 min
 Lab File: BM031938.D
 Acq: 28 Aug 2021 18:42

Instrument :
 BNA_M
 ClientSampled :

Tgt Ion:278 Resp: 7626905

Ion	Ratio	Lower	Upper
278	100		
139	12.5	12.8	19.2#
279	24.6	19.1	28.7



#96
 Benzo(g,h,i)perylene
 Concen: 158.004 ng/ul
 RT: 26.044 min Scan# 3903
 Delta R.T. 0.047 min
 Lab File: BM031938.D
 Acq: 28 Aug 2021 18:42

Tgt Ion:276 Resp: 6936730

Ion	Ratio	Lower	Upper
276	100		
138	16.8	16.5	24.7
277	23.9	18.5	27.7

