

Data Path : Z:\SVOASRV\HPCHEM1\BNA M\DATA\BM082919\
 Data File : BM022423.D
 Acq On : 30 Aug 2019 00:26
 Operator : HP/JU
 Sample : K4576-02
 Misc :
 ALS Vial : 13 Sample Multiplier: 1

Instrument :
 BNA_M
 ClientSampleId :
 RBR-200034-RBR-200036

Quant Time: Aug 30 07:54:04 2019
 Quant Method : Z:\SVOASRV\HPCHEM1\BNA M\METHODS\8270-BM082919.M
 Quant Title : ASP BNA STANDARDS FOR 5 POINT CALIBRATION
 QLast Update : Thu Aug 29 16:51:32 2019
 Response via : Initial Calibration

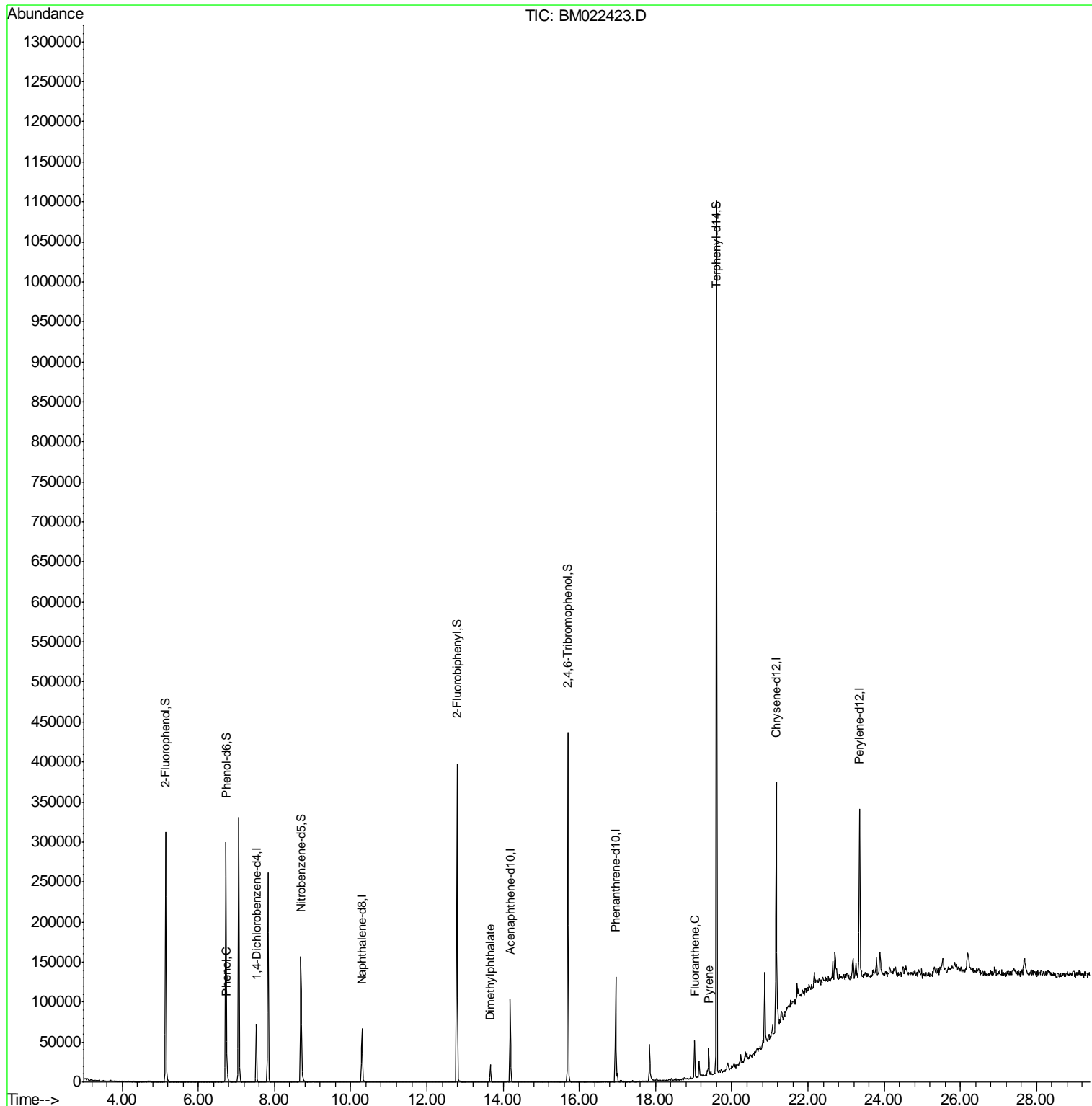
Internal Standards	R.T.	QIon	Response	Conc	Units	Dev(Min)
1) 1,4-Dichlorobenzene-d4	7.52	152	16748	20.00	ng	0.00
21) Naphthalene-d8	10.30	136	54522	20.00	ng	0.00
39) Acenaphthene-d10	14.19	164	34091	20.00	ng	0.00
64) Phenanthrene-d10	16.95	188	78517	20.00	ng	0.00
76) Chrysene-d12	21.17	240	117352	20.00	ng	0.00
87) Perylene-d12	23.35	264	142539	20.00	ng	-0.01
System Monitoring Compounds						
5) 2-Fluorophenol	5.15	112	106661	111.79	ng	0.00
7) Phenol-d6	6.72	99	133946	104.98	ng	0.00
23) Nitrobenzene-d5	8.69	82	94272	75.73	ng	0.00
42) 2,4,6-Tribromophenol	15.70	330	69670	99.87	ng	0.00
45) 2-Fluorobiphenyl	12.79	172	189593	63.00	ng	0.00
79) Terphenyl-d14	19.60	244	426803	48.00	ng	0.00
Target Compounds						
10) Phenol	6.75	94	6151	4.799	ng	86
50) Dimethylphthalate	13.67	163	16319	5.504	ng	98
75) Fluoranthene	19.03	202	26506	4.349	ng	95
78) Pyrene	19.39	202	22379	2.798	ng	99

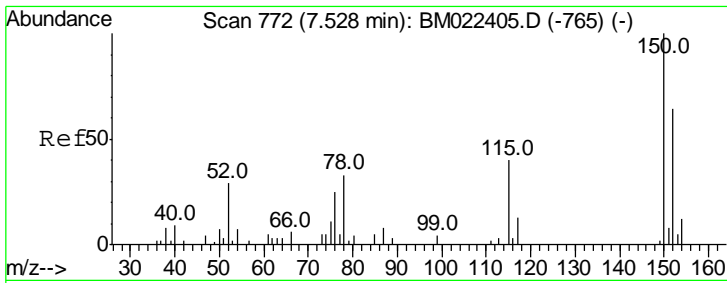
(#) = qualifier out of range (m) = manual integration (+) = signals summed

Data Path : Z:\SVOASRV\HPCHEM1\BNA M\DATA\BM082919\
 Data File : BM022423.D
 Acq On : 30 Aug 2019 00:26
 Operator : HP/JU
 Sample : K4576-02
 Misc :
 ALS Vial : 13 Sample Multiplier: 1

Instrument :
 BNA_M
 ClientSampleId :
 RBR-200034-RBR-200036

Quant Time: Aug 30 07:54:04 2019
 Quant Method : Z:\SVOASRV\HPCHEM1\BNA M\METHODS\8270-BM082919.M
 Quant Title : ASP BNA STANDARDS FOR 5 POINT CALIBRATION
 QLast Update : Thu Aug 29 16:51:32 2019
 Response via : Initial Calibration

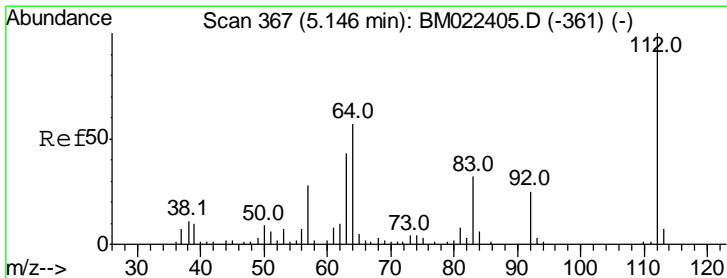
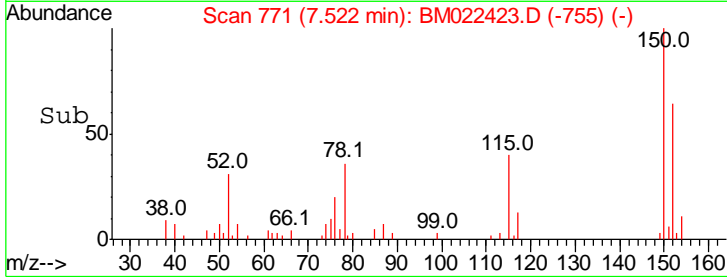
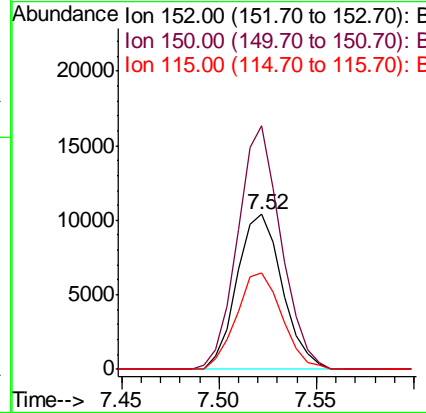
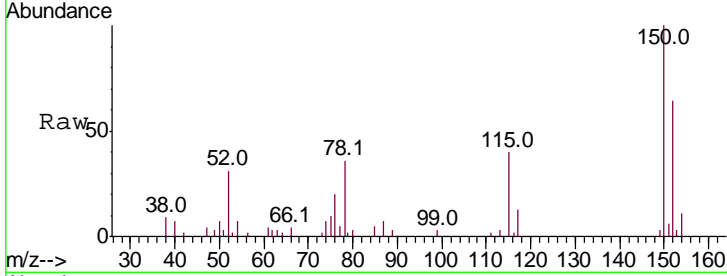




#1
 1,4-Dichlorobenzene-d4
 Concen: 20.000 ng
 RT: 7.52 min Scan# 771
 Delta R.T. -0.01 min
 Lab File: BM022423.D
 Acq: 30 Aug 2019 00:26

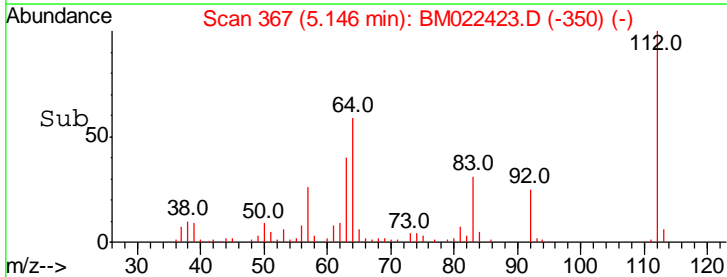
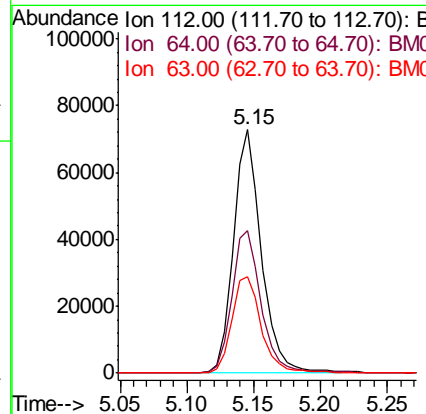
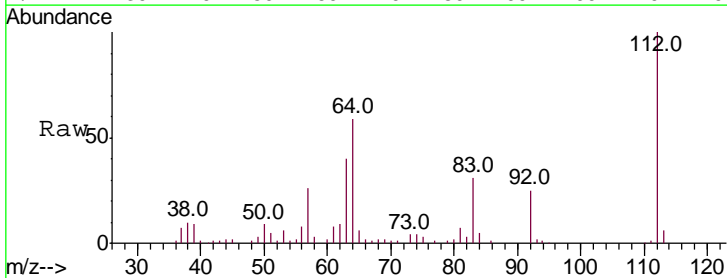
Instrument :
 BNA_M
ClientSampleId :
 RBR-200034-RBR-200036

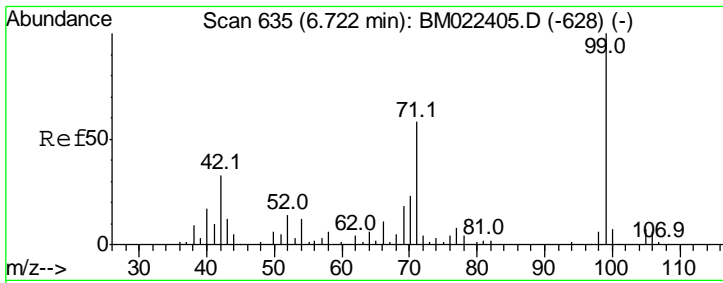
Tgt Ion	Resp	Lower	Upper
152	16748		
152	100		
150	157.2	125.4	188.0
115	62.5	50.3	75.5



#5
 2-Fluorophenol
 Concen: 111.790 ng
 RT: 5.15 min Scan# 367
 Delta R.T. -0.00 min
 Lab File: BM022423.D
 Acq: 30 Aug 2019 00:26

Tgt Ion	Resp	Lower	Upper
112	106661		
112	100		
64	58.6	45.4	68.2
63	39.8	34.5	51.7

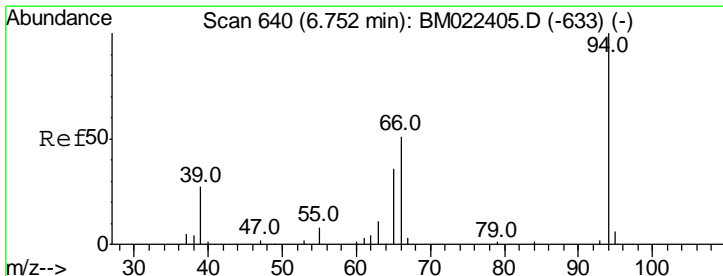
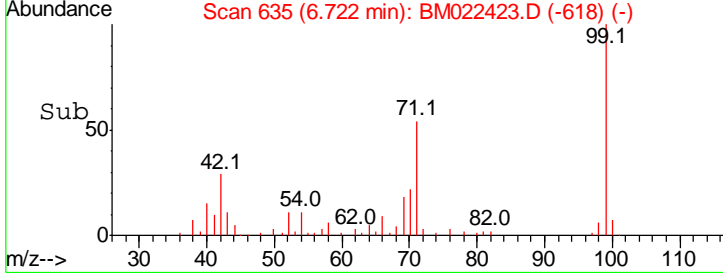
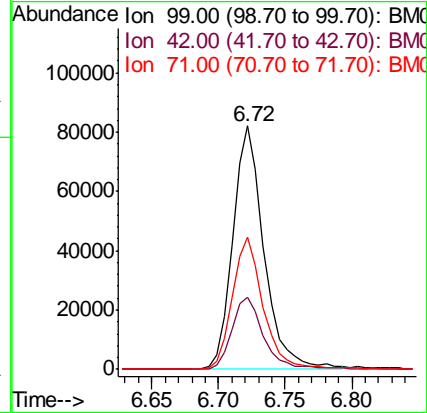
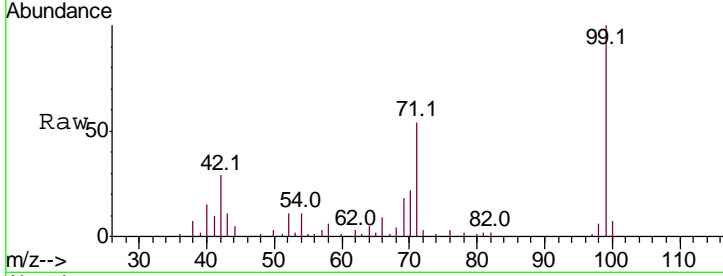




#7
 Phenol-d6
 Concen: 104.981 ng
 RT: 6.72 min Scan# 635
 Delta R.T. -0.00 min
 Lab File: BM022423.D
 Acq: 30 Aug 2019 00:26

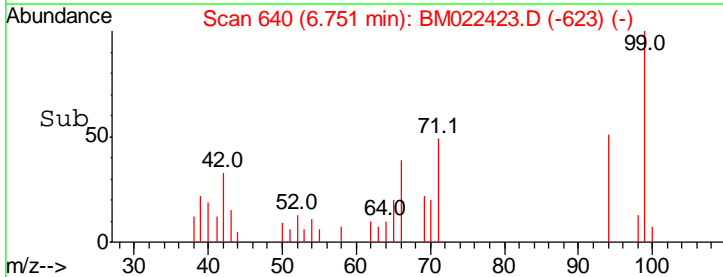
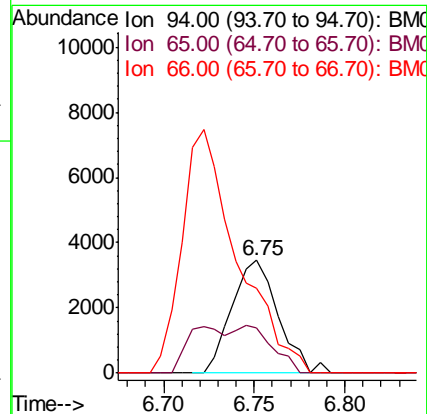
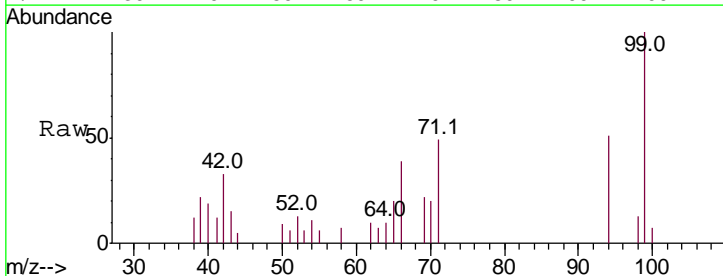
Instrument :
 BNA_M
 ClientSampled :
 RBR-200034-RBR-200036

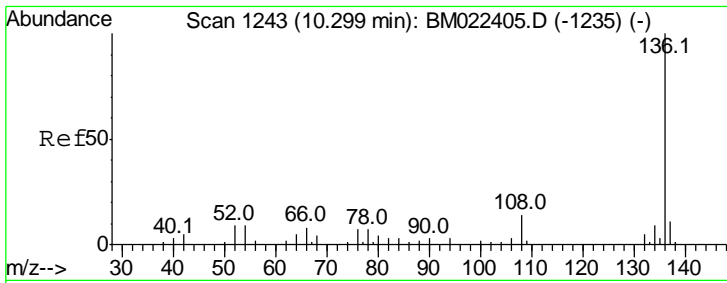
Tgt Ion	Resp	Lower	Upper
99	100		
42	29.4	26.3	39.5
71	54.4	46.6	69.8



#10
 Phenol
 Concen: 4.799 ng
 RT: 6.75 min Scan# 640
 Delta R.T. -0.00 min
 Lab File: BM022423.D
 Acq: 30 Aug 2019 00:26

Tgt Ion	Resp	Lower	Upper
94	100		
65	39.8	17.7	57.7
66	75.2	39.6	79.6

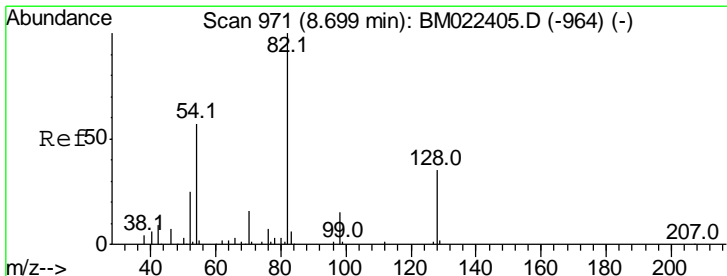
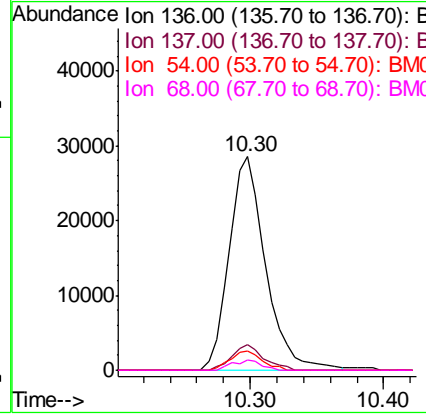
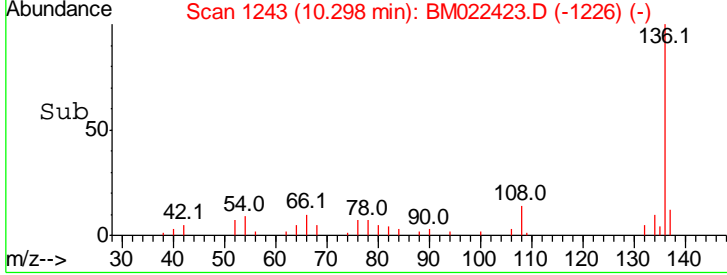
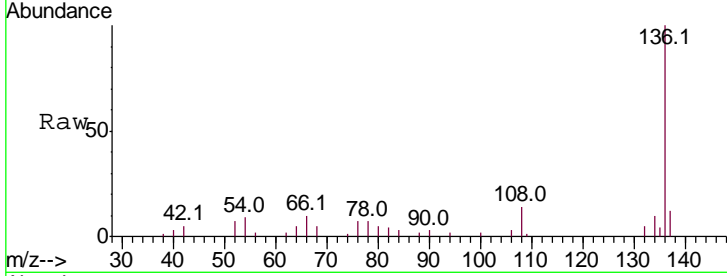




#21
 Naphthalene-d8
 Concen: 20.000 ng
 RT: 10.30 min Scan# 1243
 Delta R.T. -0.00 min
 Lab File: BM022423.D
 Acq: 30 Aug 2019 00:26

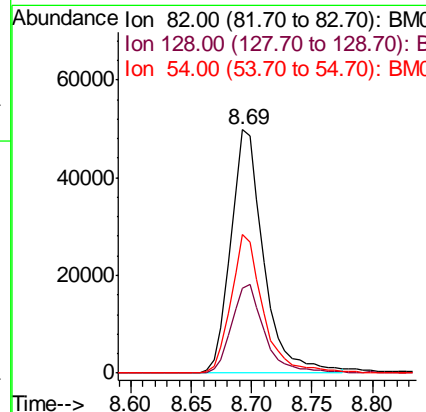
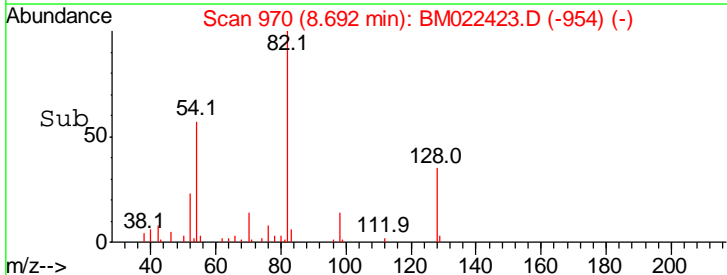
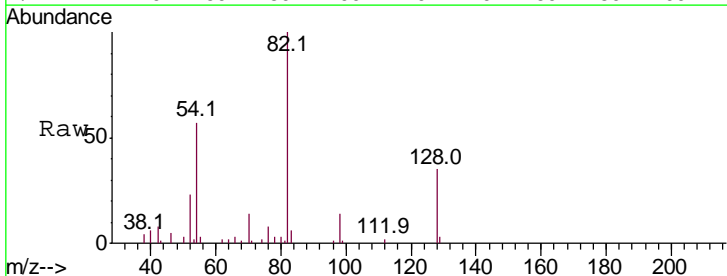
Instrument :
 BNA_M
 ClientSampleId :
 RBR-200034-RBR-200036

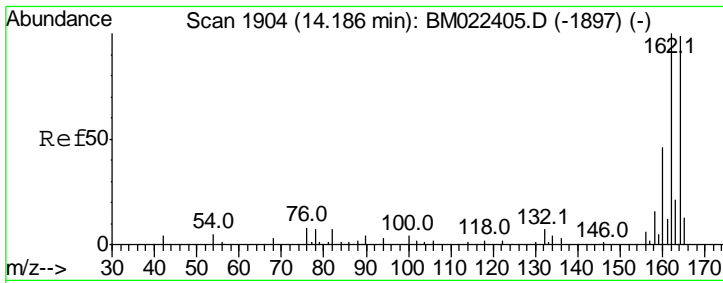
Tgt Ion	Resp	Lower	Upper
136	100		
137	11.7	8.6	13.0
54	9.1	7.0	10.6
68	5.1	2.9	4.3



#23
 Nitrobenzene-d5
 Concen: 75.734 ng
 RT: 8.69 min Scan# 970
 Delta R.T. -0.01 min
 Lab File: BM022423.D
 Acq: 30 Aug 2019 00:26

Tgt Ion	Resp	Lower	Upper
82	100		
128	34.9	27.9	41.9
54	57.1	45.2	67.8

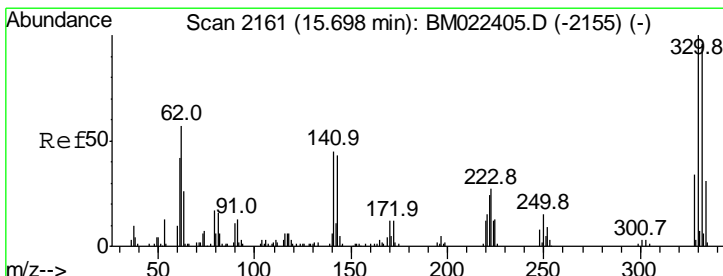
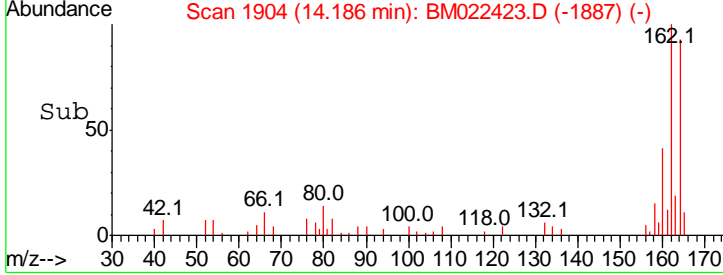
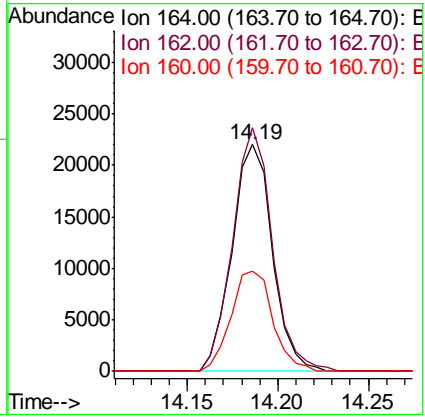
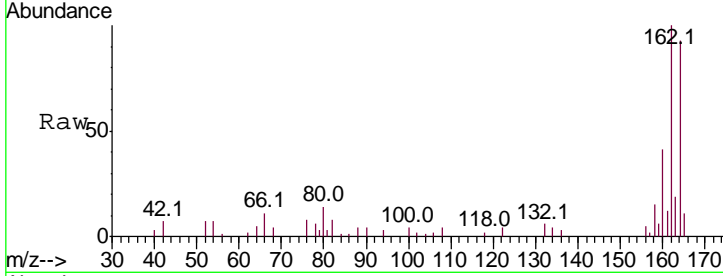




#39
 Acenaphthene-d10
 Concen: 20.000 ng
 RT: 14.19 min Scan# 1904
 Delta R.T. -0.00 min
 Lab File: BM022423.D
 Acq: 30 Aug 2019 00:26

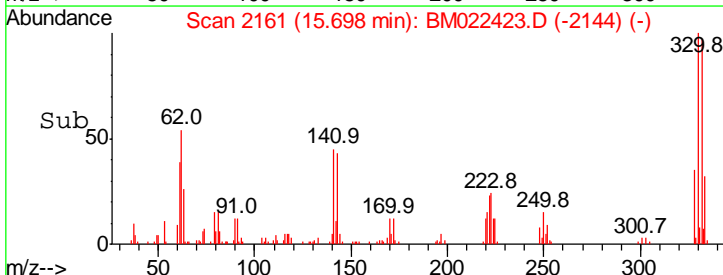
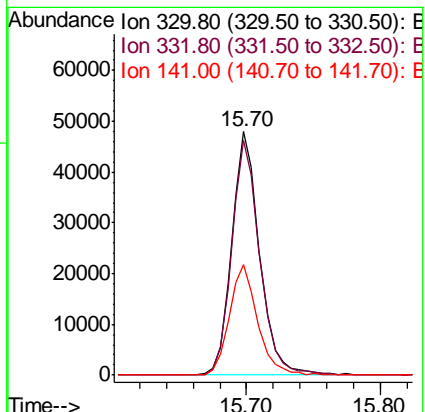
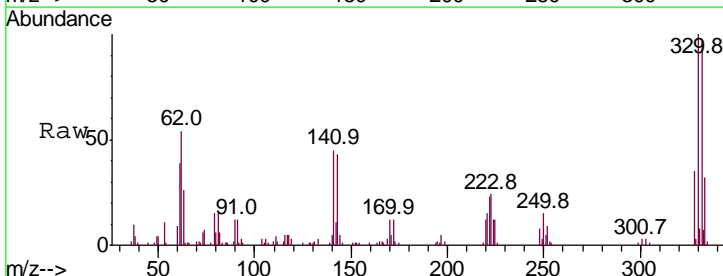
Instrument :
 BNA_M
 ClientSampled :
 RBR-200034-RBR-200036

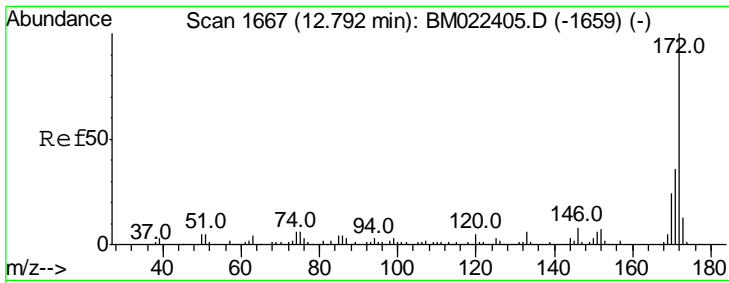
Tgt Ion	Resp	Lower	Upper
164	100		
162	107.4	80.6	121.0
160	44.2	37.3	55.9



#42
 2,4,6-Tribromophenol
 Concen: 99.872 ng
 RT: 15.70 min Scan# 2161
 Delta R.T. -0.00 min
 Lab File: BM022423.D
 Acq: 30 Aug 2019 00:26

Tgt Ion	Resp	Lower	Upper
330	100		
332	97.0	77.8	116.8
141	45.9	35.6	53.4

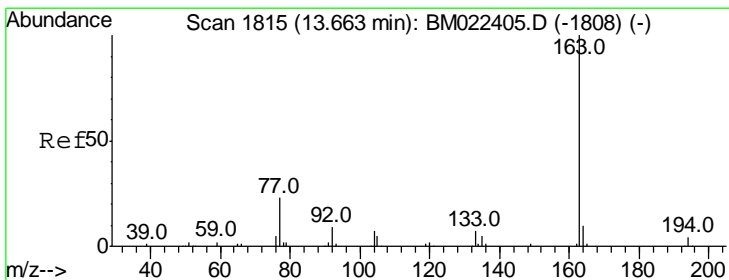
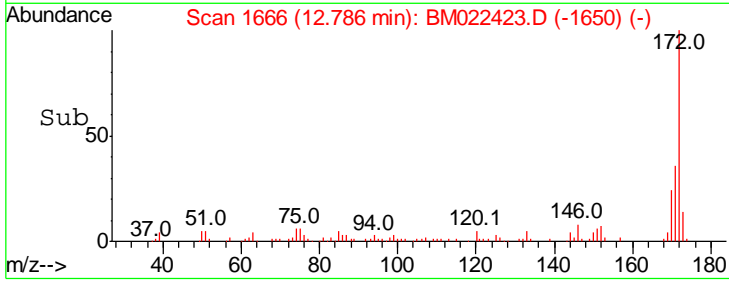
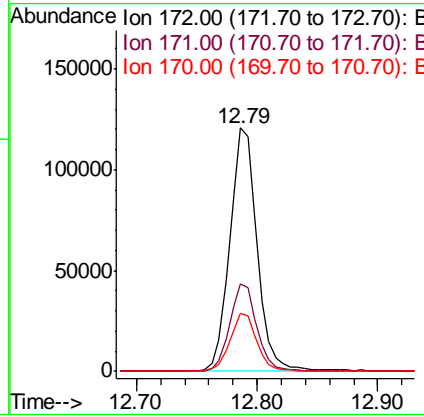
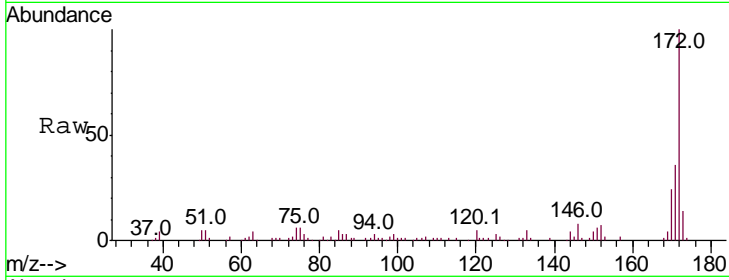




#45
 2-Fluorobiphenyl
 Concen: 63.002 ng
 RT: 12.79 min Scan# 1666
 Delta R.T. -0.01 min
 Lab File: BM022423.D
 Acq: 30 Aug 2019 00:26

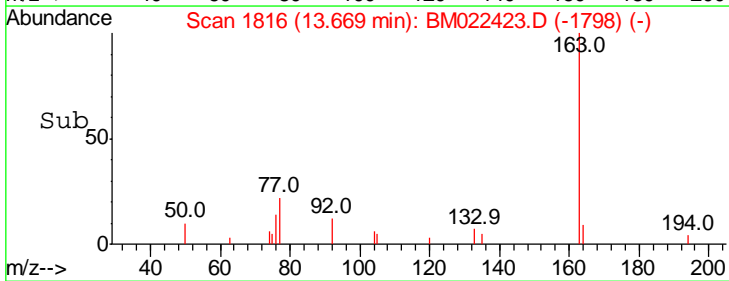
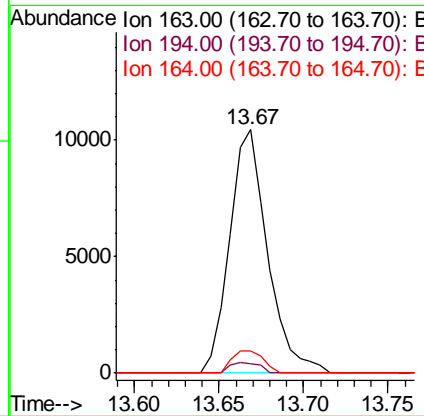
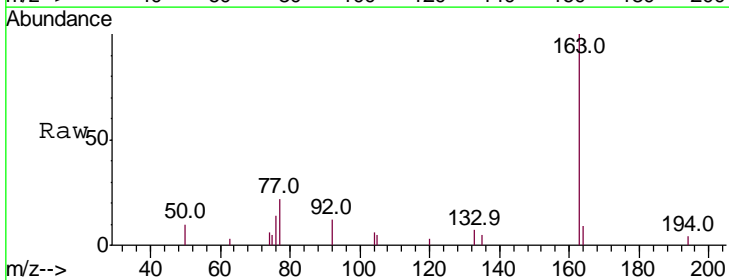
Instrument :
 BNA_M
 ClientSampled :
 RBR-200034-RBR-200036

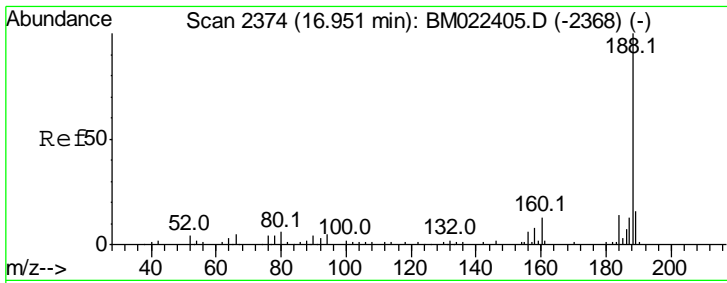
Tgt Ion	Resp	Lower	Upper
172	100		
171	35.8	28.5	42.7
170	23.8	18.9	28.3



#50
 Dimethylphthalate
 Concen: 5.504 ng
 RT: 13.67 min Scan# 1816
 Delta R.T. 0.01 min
 Lab File: BM022423.D
 Acq: 30 Aug 2019 00:26

Tgt Ion	Resp	Lower	Upper
163	100		
194	4.0	3.4	5.2
164	9.0	8.2	12.2

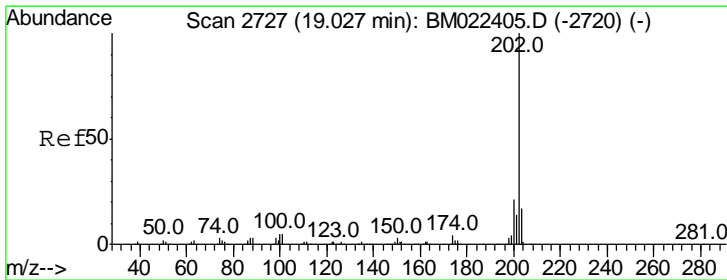
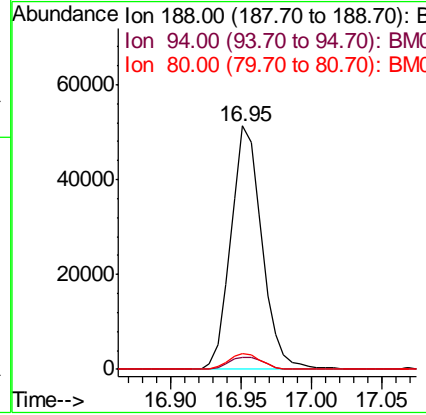
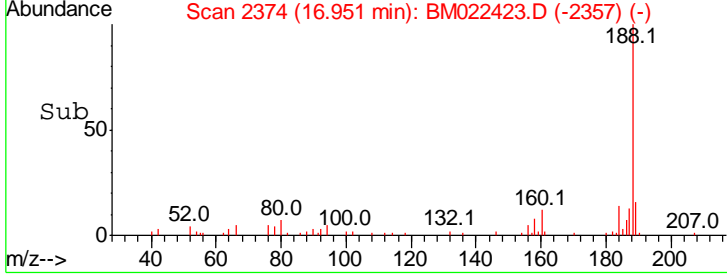
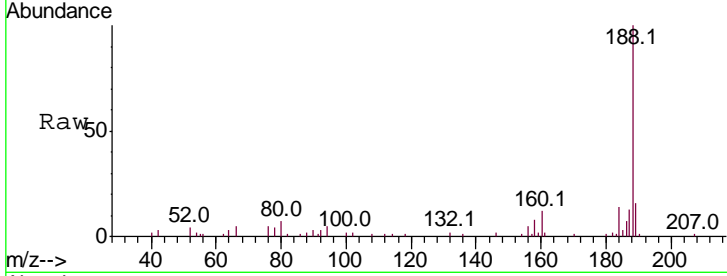




#64
 Phenanthrene-d10
 Concen: 20.000 ng
 RT: 16.95 min Scan# 2374
 Delta R.T. -0.00 min
 Lab File: BM022423.D
 Acq: 30 Aug 2019 00:26

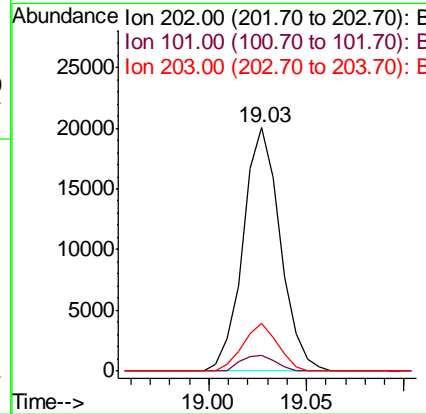
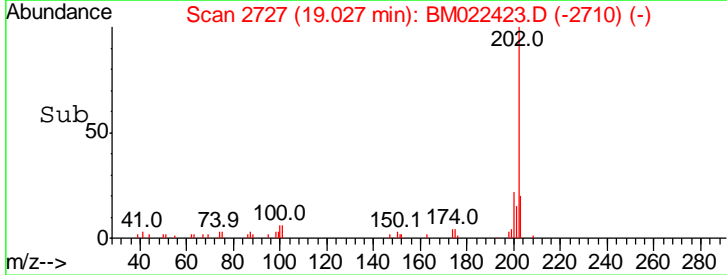
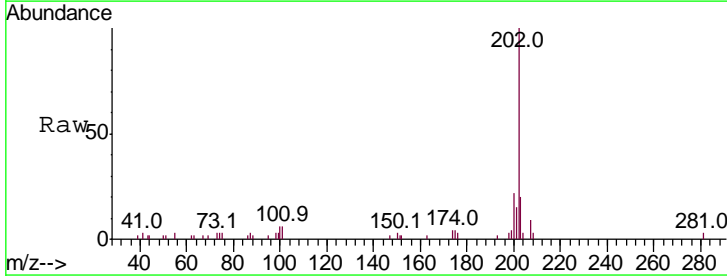
Instrument :
 BNA_M
 ClientSampled :
 RBR-200034-RBR-200036

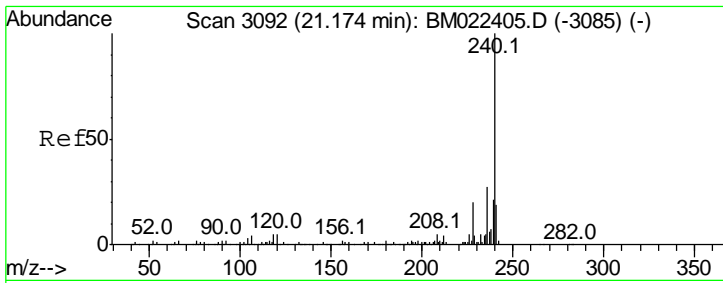
Tgt Ion	Resp	Lower	Upper
188	100		
94	5.1	4.4	6.6
80	6.7	5.0	7.6



#75
 Fluoranthene
 Concen: 4.349 ng
 RT: 19.03 min Scan# 2727
 Delta R.T. -0.00 min
 Lab File: BM022423.D
 Acq: 30 Aug 2019 00:26

Tgt Ion	Resp	Lower	Upper
202	100		
101	6.4	0.0	25.1
203	19.5	0.0	37.1

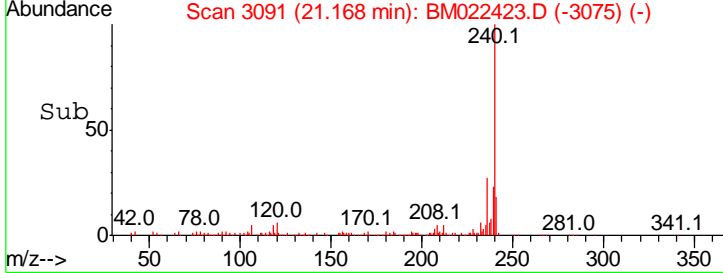
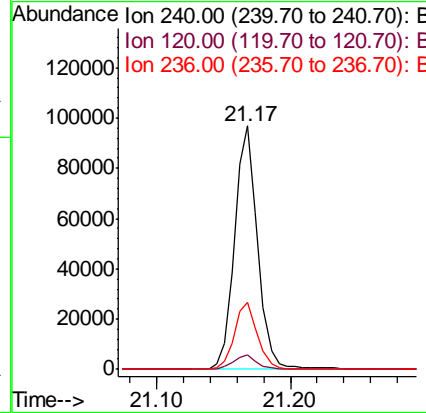
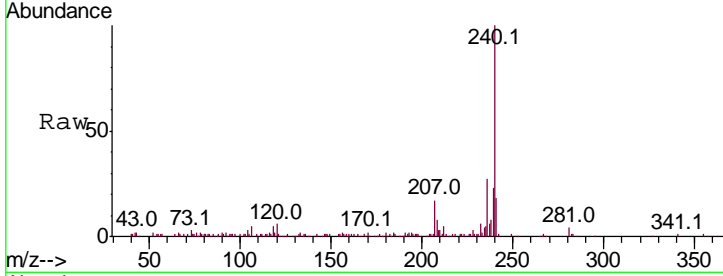




#76
 Chrysene-d12
 Concen: 20.000 ng
 RT: 21.17 min Scan# 3091
 Delta R.T. -0.01 min
 Lab File: BM022423.D
 Acq: 30 Aug 2019 00:26

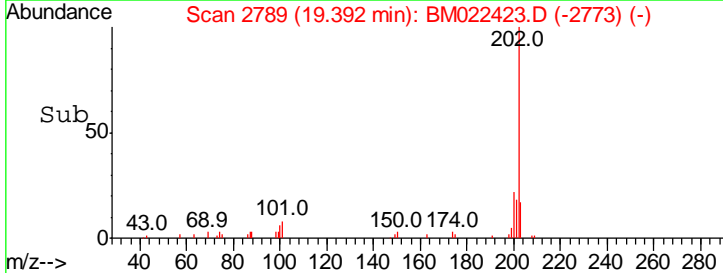
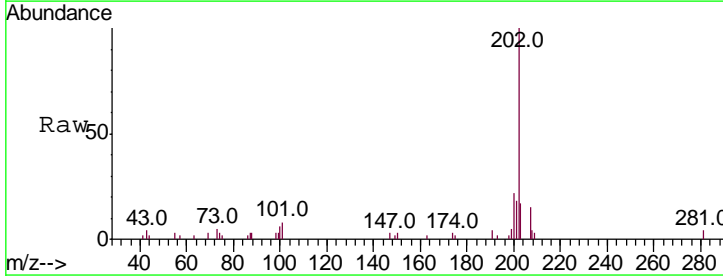
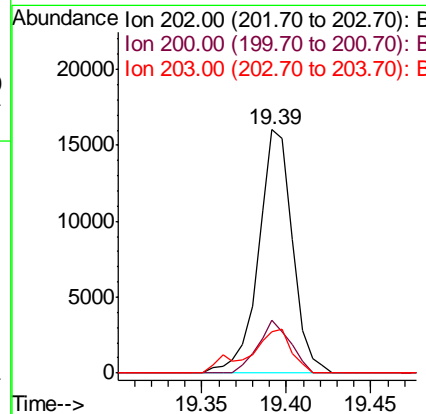
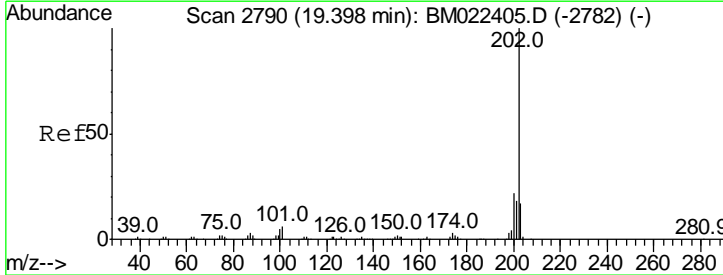
Instrument :
 BNA_M
ClientSampled :
 RBR-200034-RBR-200036

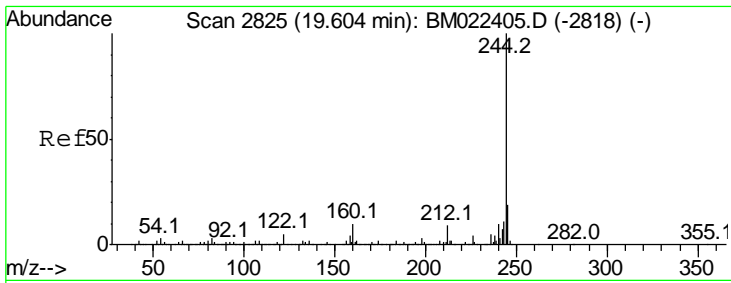
Tgt Ion	Resp	Lower	Upper
240	100		
120	5.8	3.9	5.9
236	27.3	21.4	32.2



#78
 Pyrene
 Concen: 2.798 ng
 RT: 19.39 min Scan# 2789
 Delta R.T. -0.01 min
 Lab File: BM022423.D
 Acq: 30 Aug 2019 00:26

Tgt Ion	Resp	Lower	Upper
202	100		
200	21.5	17.7	26.5
203	17.0	13.8	20.8

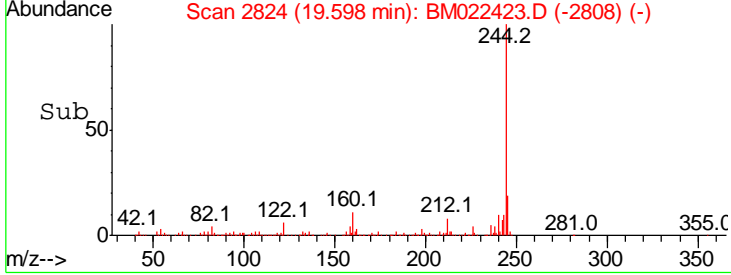
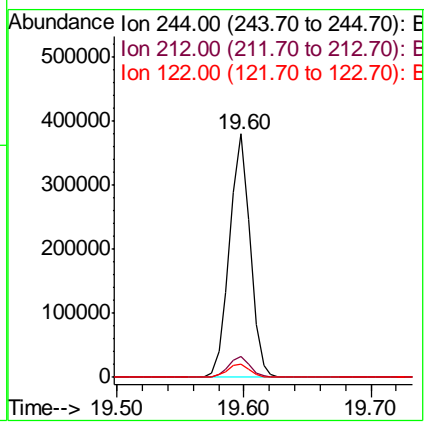
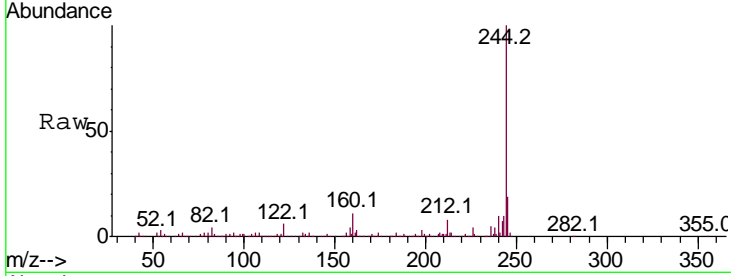




#79
 Terphenyl-d14
 Concen: 47.999 ng
 RT: 19.60 min Scan# 2824
 Delta R.T. -0.01 min
 Lab File: BM022423.D
 Acq: 30 Aug 2019 00:26

Instrument :
 BNA_M
ClientSampled :
 RBR-200034-RBR-200036

Tgt Ion	Ratio	Lower	Upper
244	100		
212	8.4	7.0	10.4
122	5.6	3.9	5.9



#87
 Perylene-d12
 Concen: 20.000 ng
 RT: 23.35 min Scan# 3462
 Delta R.T. -0.01 min
 Lab File: BM022423.D
 Acq: 30 Aug 2019 00:26

Tgt Ion	Ratio	Lower	Upper
264	100		
260	24.3	20.2	30.2
265	22.8	18.2	27.2

