

Data Path : Z:\SVOASRV\HPCHEM1\BNA M\DATA\BM090618\
 Data File : BM016696.D
 Acq On : 06 Sep 2018 22:00
 Operator : SJ/JU
 Sample : J4798-12
 Misc :
 ALS Vial : 12 Sample Multiplier: 1

Instrument :
 BNA_M
 ClientSampleId :
 090418-DBRI-E-D-M

Quant Time: Sep 07 07:17:03 2018
 Quant Method : Z:\SVOASRV\HPCHEM1\BNA M\METHODS\8270-BM082118.M
 Quant Title : ASP BNA STANDARDS FOR 5 POINT CALIBRATION
 QLast Update : Mon Aug 27 13:01:22 2018
 Response via : Initial Calibration

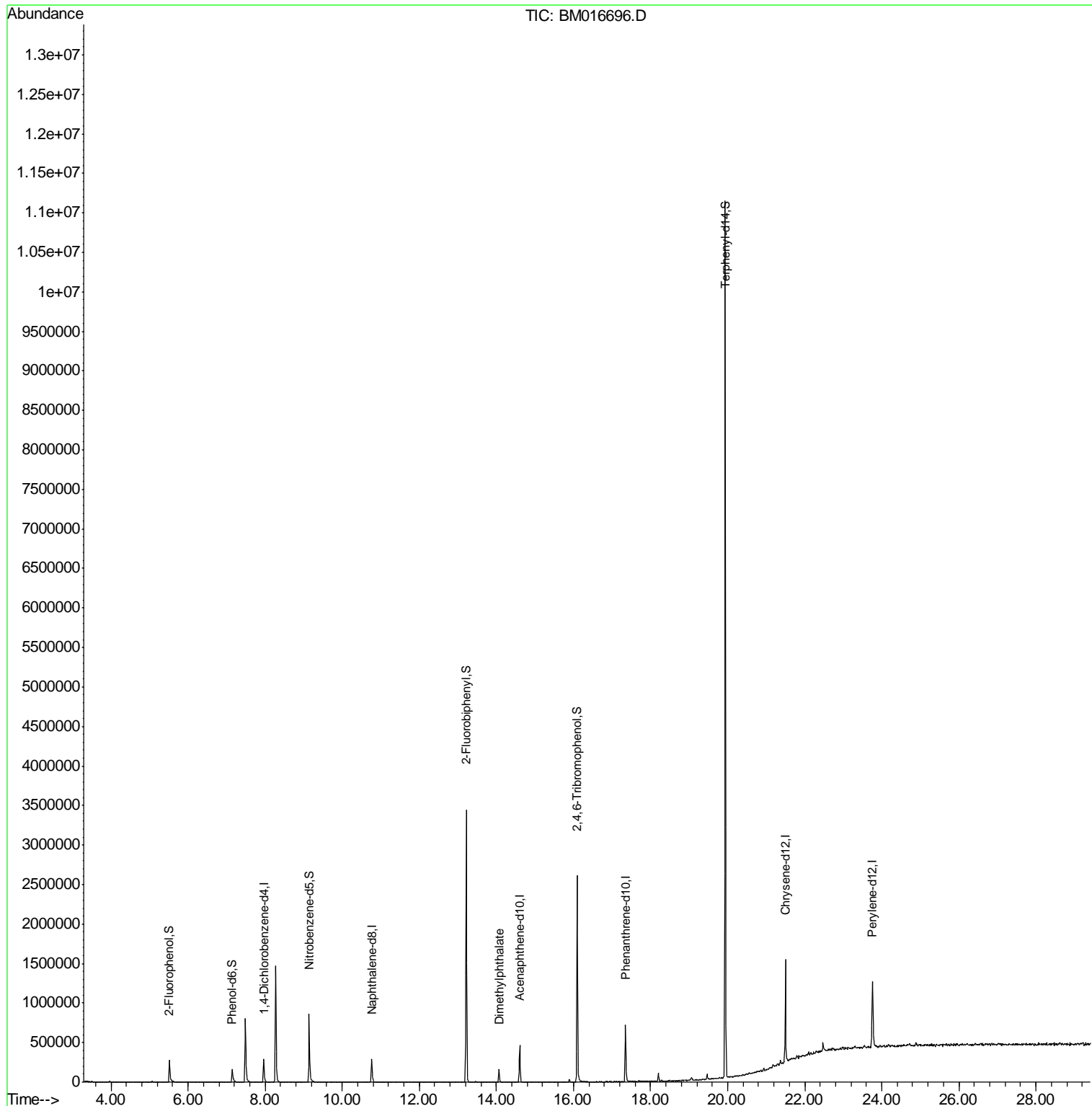
Internal Standards	R.T.	QIon	Response	Conc	Units	Dev(Min)
1) 1,4-Dichlorobenzene-d4	7.96	152	53028	20.00	ng	-0.04
21) Naphthalene-d8	10.76	136	172539	20.00	ng	-0.05
38) Acenaphthene-d10	14.60	164	120385	20.00	ng	-0.04
63) Phenanthrene-d10	17.35	188	414052	20.00	ng	-0.04
75) Chrysene-d12	21.50	240	625402	20.00	ng	-0.04
86) Perylene-d12	23.76	264	650904	20.00	ng	-0.06
System Monitoring Compounds						
5) 2-Fluorophenol	5.52	112	102765	37.98	ng	-0.03
7) Phenol-d6	7.15	99	73093	20.41	ng	-0.03
23) Nitrobenzene-d5	9.15	82	491813	130.15	ng	-0.05
41) 2,4,6-Tribromophenol	16.10	330	366905	109.03	ng	-0.04
44) 2-Fluorobiphenyl	13.22	172	1366390	109.10	ng	-0.05
78) Terphenyl-d14	19.94	244	4003664	135.50	ng	-0.04
Target Compounds						
49) Dimethylphthalate	14.07	163	91035	7.871	ng	Qvalue # 94

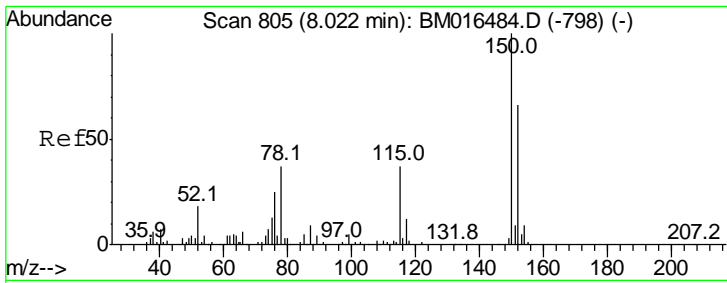
(#) = qualifier out of range (m) = manual integration (+) = signals summed

Data Path : Z:\SVOASRV\HPCHEM1\BNA M\DATA\BM090618\
 Data File : BM016696.D
 Acq On : 06 Sep 2018 22:00
 Operator : SJ/JU
 Sample : J4798-12
 Misc :
 ALS Vial : 12 Sample Multiplier: 1

Instrument :
 BNA_M
ClientSampleId :
 090418-DBRI-E-D-M

Quant Time: Sep 07 07:17:03 2018
 Quant Method : Z:\SVOASRV\HPCHEM1\BNA M\METHODS\8270-BM082118.M
 Quant Title : ASP BNA STANDARDS FOR 5 POINT CALIBRATION
 QLast Update : Mon Aug 27 13:01:22 2018
 Response via : Initial Calibration

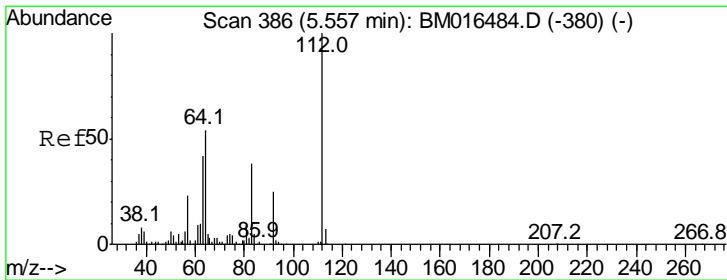
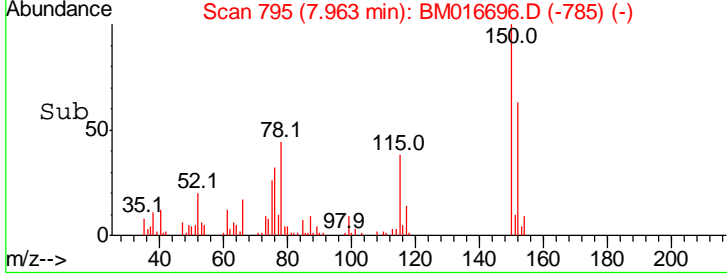
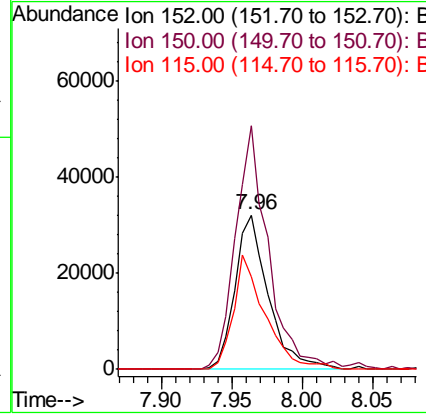
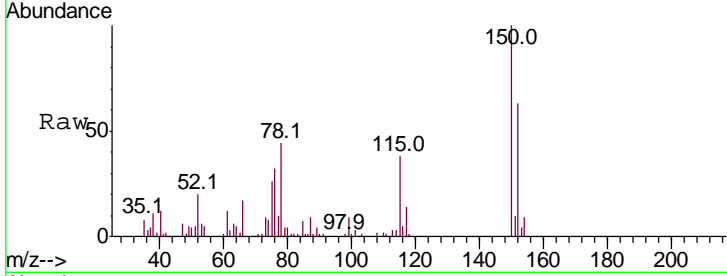




#1
 1,4-Dichlorobenzene-d4
 Concen: 20.000 ng
 RT: 7.96 min Scan# 795
 Delta R.T. -0.04 min
 Lab File: BM016696.D
 Acq: 06 Sep 2018 22:00

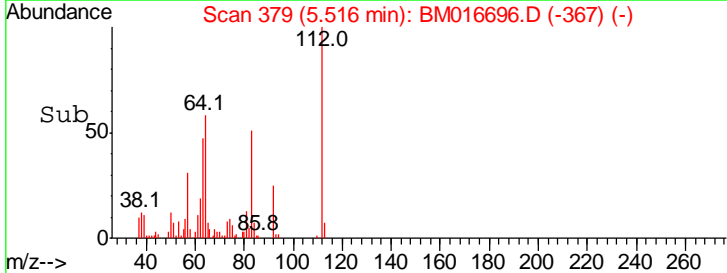
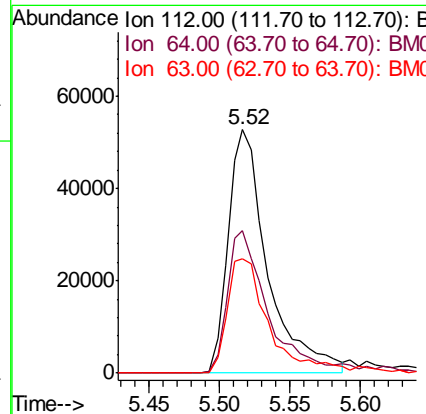
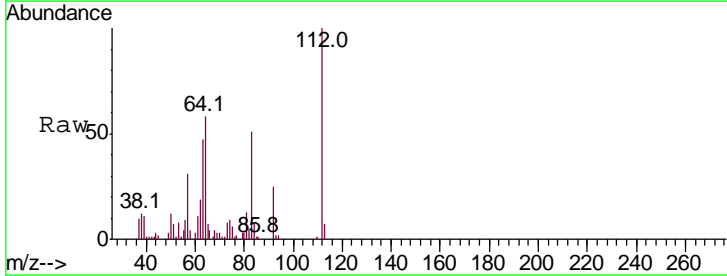
Instrument :
 BNA_M
ClientSampleId :
 090418-DBRI-E-D-M

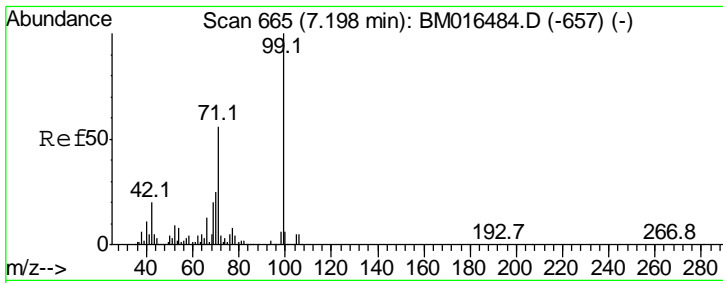
Tgt Ion	Resp	Lower	Upper
152	53028		
150	158.1	119.5	179.3
115	60.4	43.0	64.4



#5
 2-Fluorophenol
 Concen: 37.976 ng
 RT: 5.52 min Scan# 379
 Delta R.T. -0.03 min
 Lab File: BM016696.D
 Acq: 06 Sep 2018 22:00

Tgt Ion	Resp	Lower	Upper
112	102765		
64	58.5	38.6	57.8#
63	47.2	19.3	28.9#

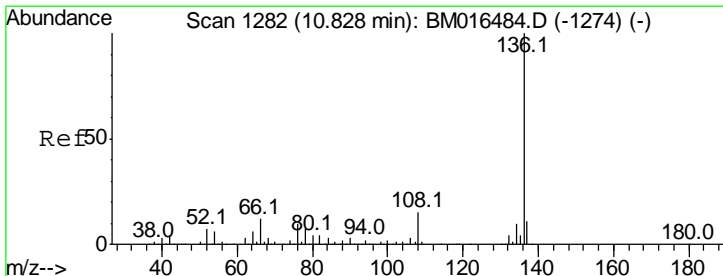
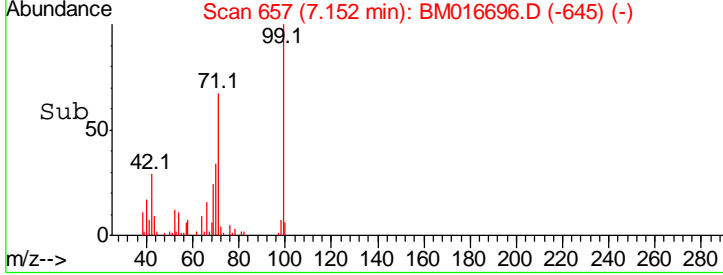
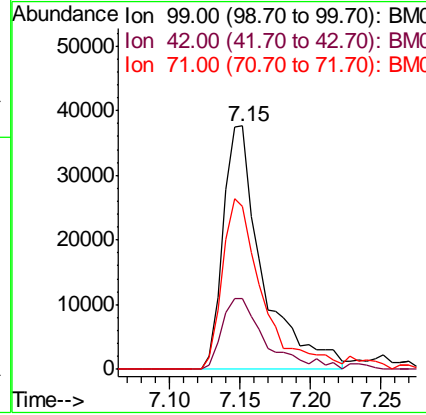
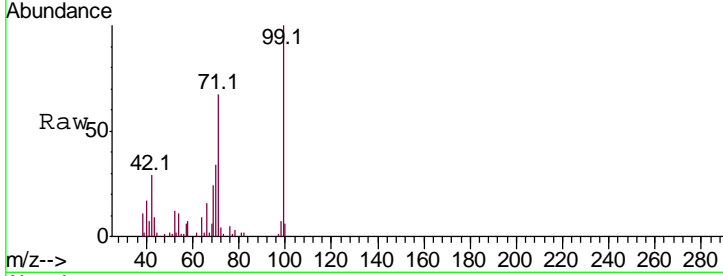




#7
 Phenol-d6
 Concen: 20.412 ng
 RT: 7.15 min Scan# 657
 Delta R.T. -0.03 min
 Lab File: BM016696.D
 Acq: 06 Sep 2018 22:00

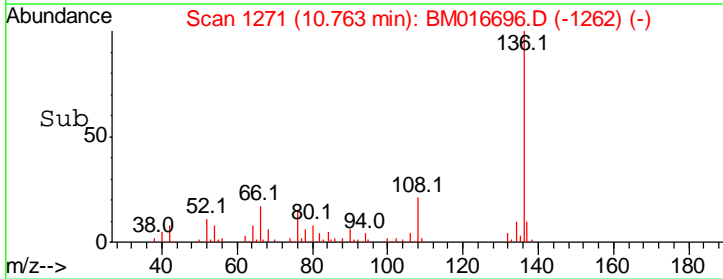
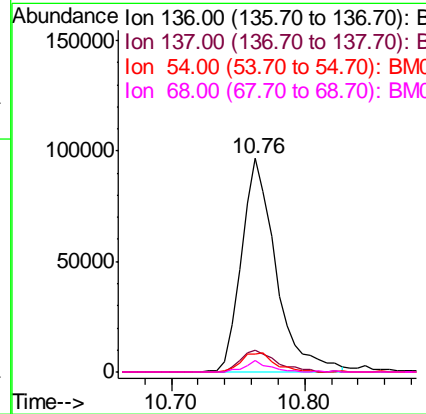
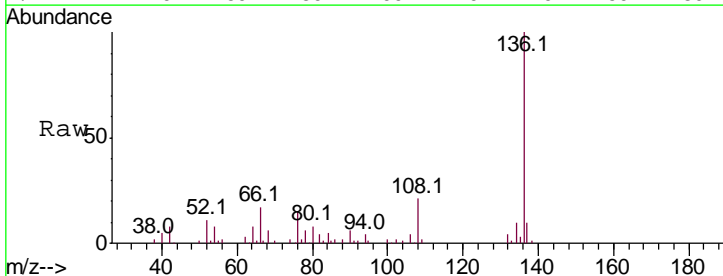
Instrument :
 BNA_M
ClientSampleId :
 090418-DBRI-E-D-M

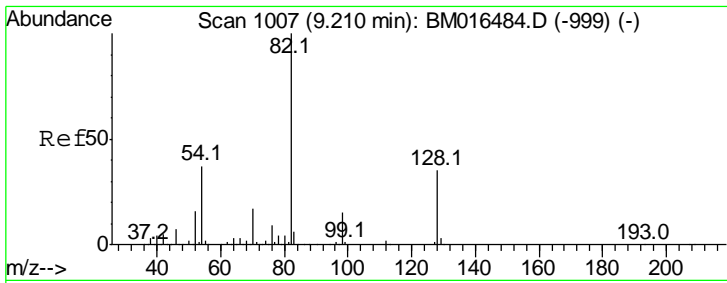
Tgt Ion	Resp	Lower	Upper
99	73093		
42	29.3	11.0	16.4#
71	67.0	23.4	35.2#



#21
 Naphthalene-d8
 Concen: 20.000 ng
 RT: 10.76 min Scan# 1271
 Delta R.T. -0.05 min
 Lab File: BM016696.D
 Acq: 06 Sep 2018 22:00

Tgt Ion	Resp	Lower	Upper
136	172539		
137	10.0	8.7	13.1
54	8.4	4.6	6.8#
68	5.7	3.7	5.5#

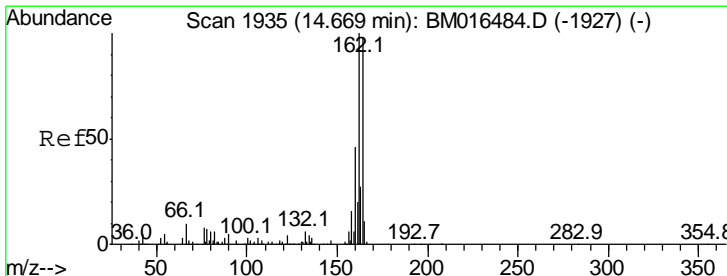
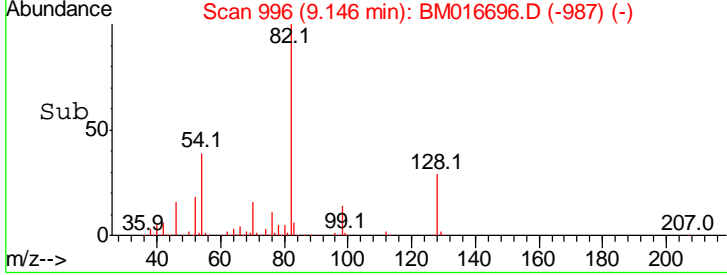
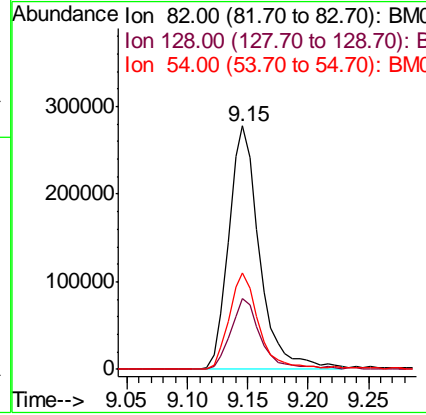
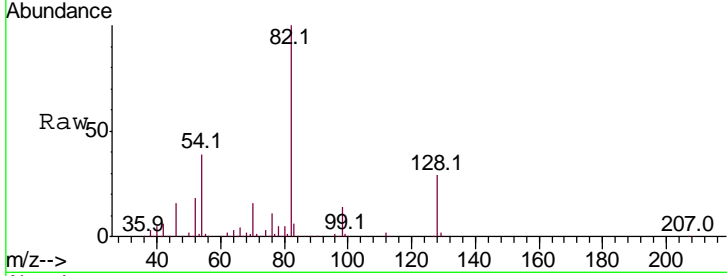




#23
 Nitrobenzene-d5
 Concen: 130.149 ng
 RT: 9.15 min Scan# 996
 Delta R.T. -0.05 min
 Lab File: BM016696.D
 Acq: 06 Sep 2018 22:00

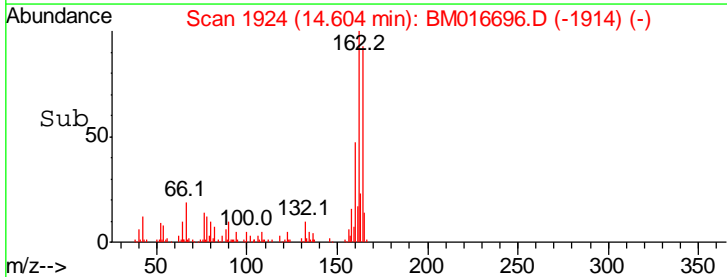
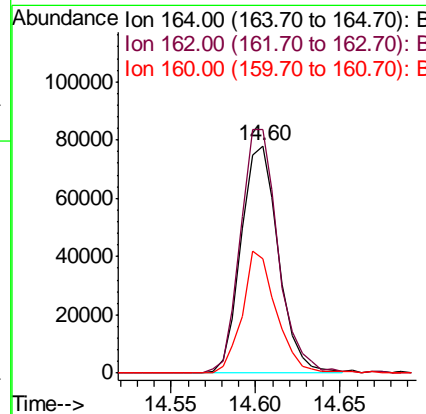
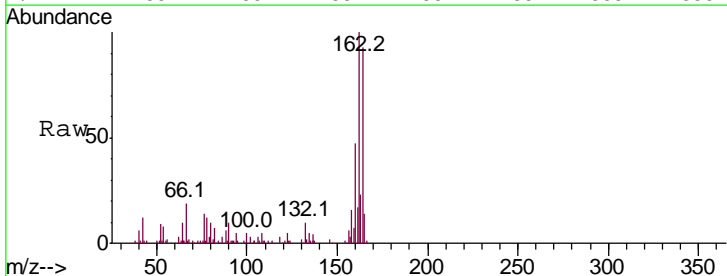
Instrument :
 BNA_M
ClientSampleId :
 090418-DBRI-E-D-M

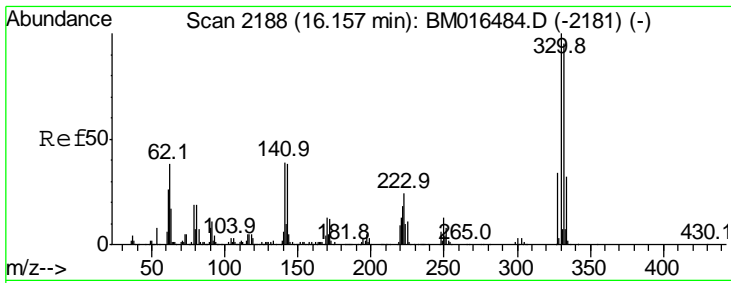
Tgt Ion	Resp	Lower	Upper
82	491813		
128	29.2	32.8	49.2#
54	39.5	40.6	60.8#



#38
 Acenaphthene-d10
 Concen: 20.000 ng
 RT: 14.60 min Scan# 1924
 Delta R.T. -0.04 min
 Lab File: BM016696.D
 Acq: 06 Sep 2018 22:00

Tgt Ion	Resp	Lower	Upper
164	120385		
162	107.0	82.4	123.6
160	50.3	35.8	53.6

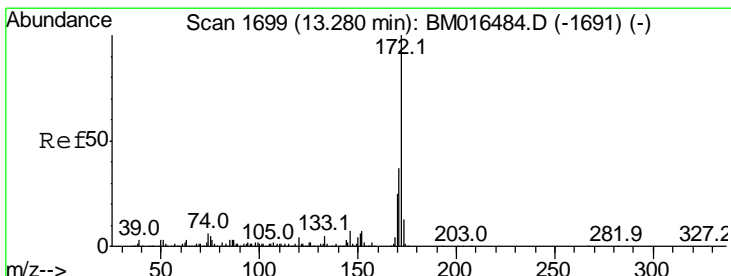
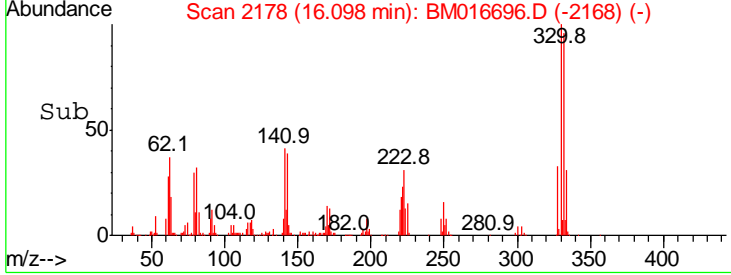
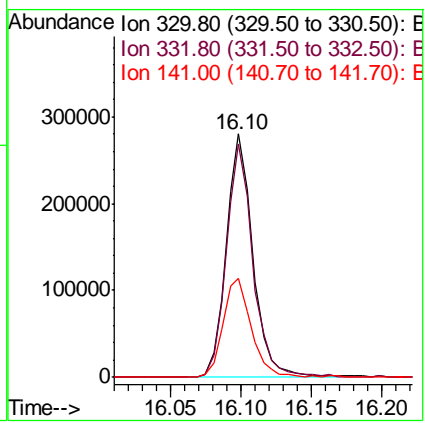
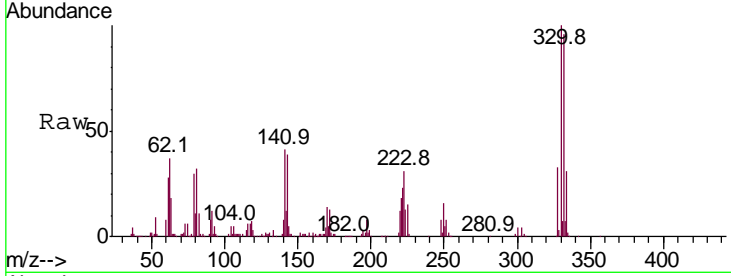




#41
 2,4,6-Tribromophenol
 Concen: 109.027 ng
 RT: 16.10 min Scan# 2178
 Delta R.T. -0.04 min
 Lab File: BM016696.D
 Acq: 06 Sep 2018 22:00

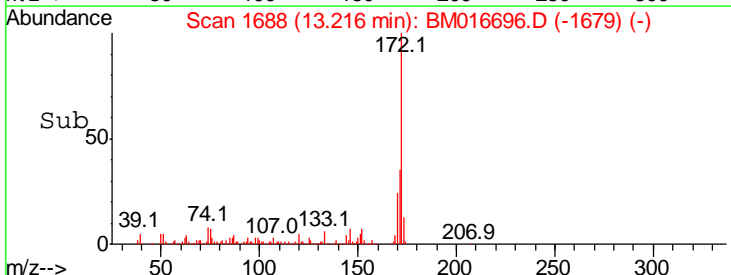
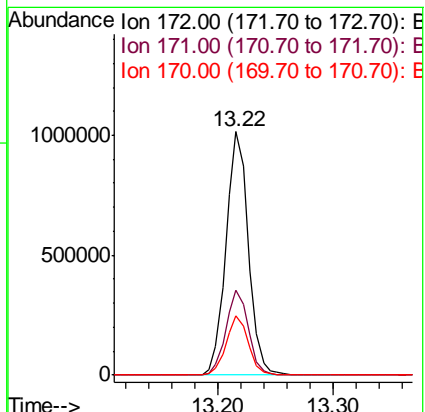
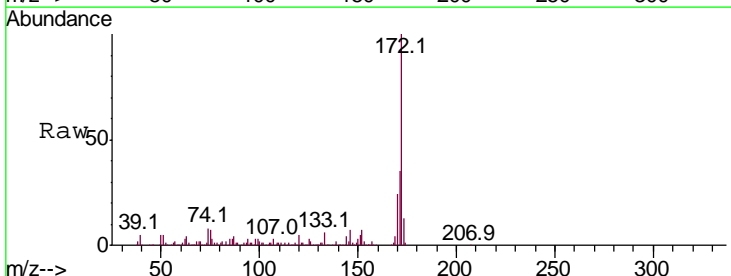
Instrument :
 BNA_M
ClientSampled :
 090418-DBRI-E-D-M

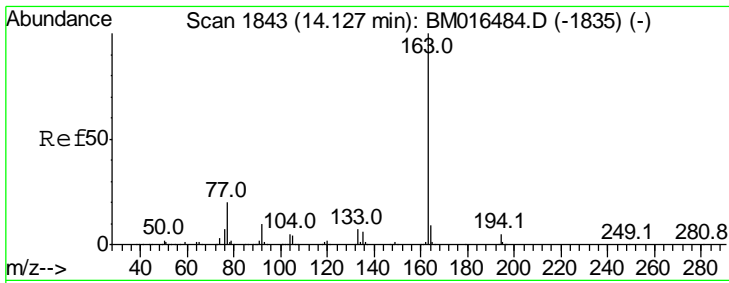
Tgt Ion	Ratio	Lower	Upper
330	100		
332	95.8	0.0	0.0#
141	43.3	0.0	0.0#



#44
 2-Fluorobiphenyl
 Concen: 109.100 ng
 RT: 13.22 min Scan# 1688
 Delta R.T. -0.05 min
 Lab File: BM016696.D
 Acq: 06 Sep 2018 22:00

Tgt Ion	Ratio	Lower	Upper
172	100		
171	34.9	28.5	42.7
170	24.3	18.8	28.2

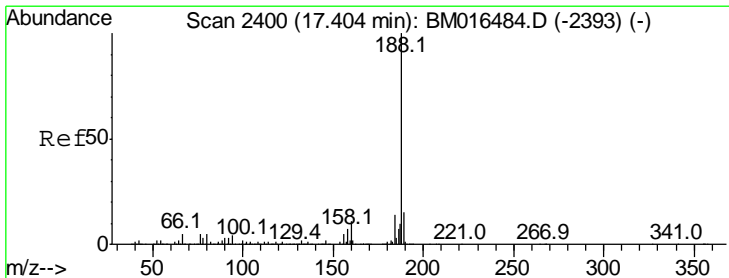
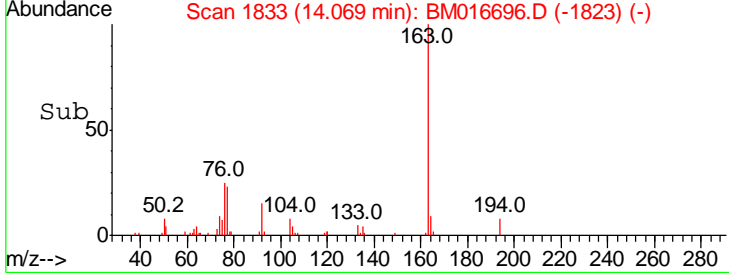
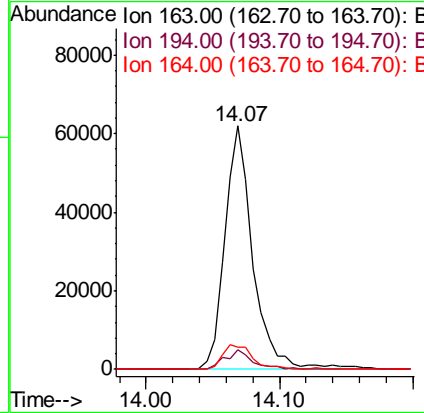
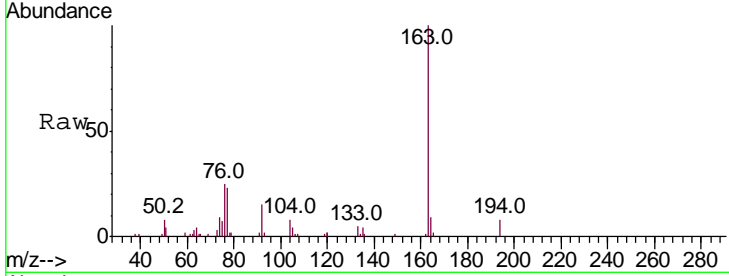




#49
 Dimethylphthalate
 Concen: 7.871 ng
 RT: 14.07 min Scan# 1833
 Delta R.T. -0.04 min
 Lab File: BM016696.D
 Acq: 06 Sep 2018 22:00

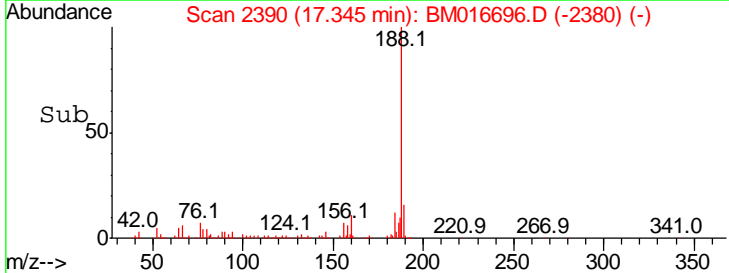
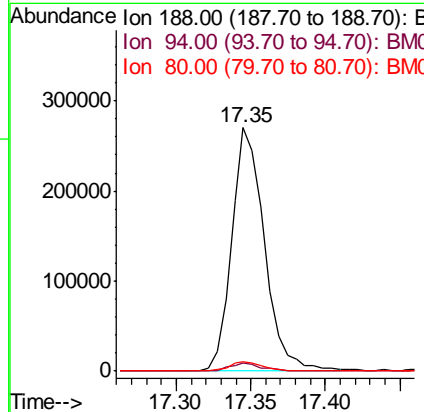
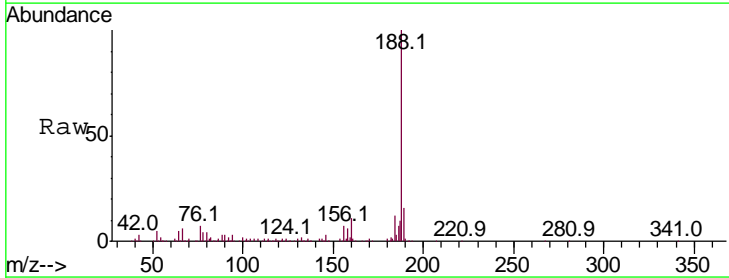
Instrument : BNA_M
 ClientSampleId : 090418-DBRI-E-D-M

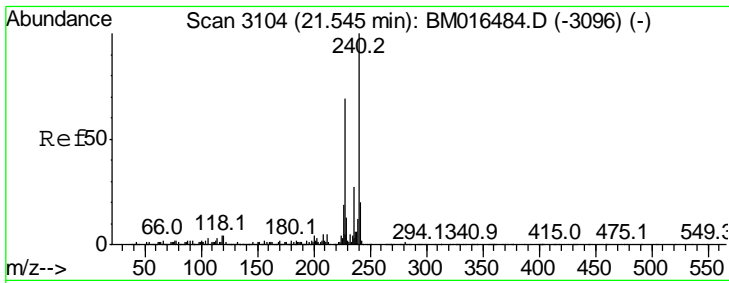
Tgt Ion	Resp	Lower	Upper
163	100		
194	8.3	2.7	4.1#
164	9.0	8.2	12.2



#63
 Phenanthrene-d10
 Concen: 20.000 ng
 RT: 17.35 min Scan# 2390
 Delta R.T. -0.04 min
 Lab File: BM016696.D
 Acq: 06 Sep 2018 22:00

Tgt Ion	Resp	Lower	Upper
188	100		
94	3.4	8.7	13.1#
80	4.1	9.3	13.9#

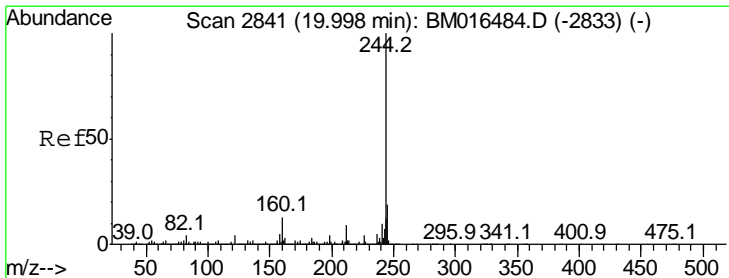
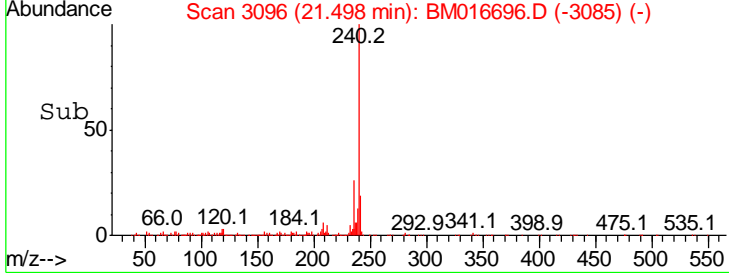
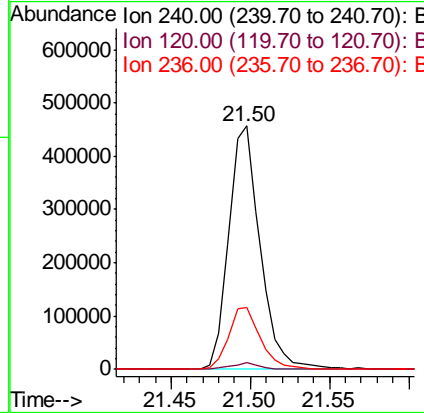
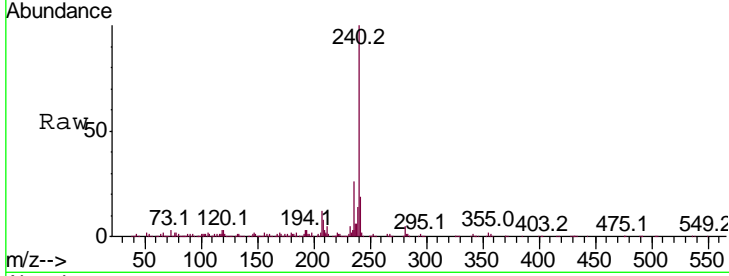




#75
 Chrysene-d12
 Concen: 20.000 ng
 RT: 21.50 min Scan# 3096
 Delta R.T. -0.04 min
 Lab File: BM016696.D
 Acq: 06 Sep 2018 22:00

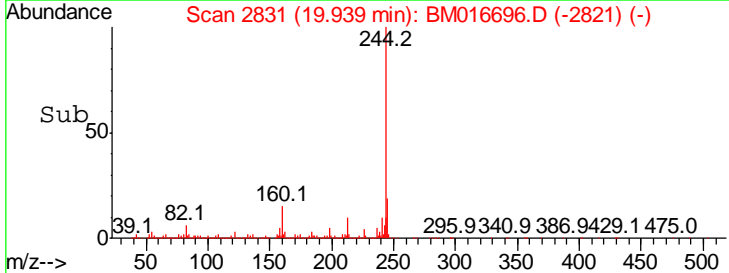
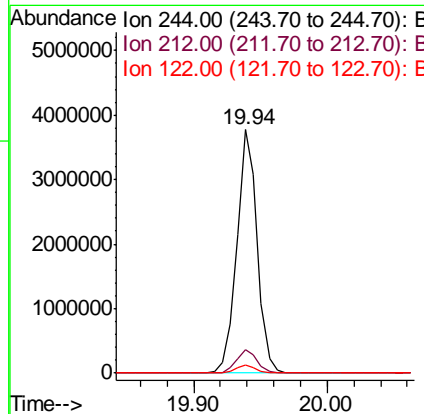
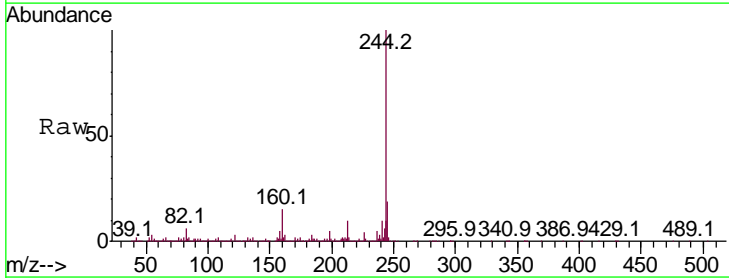
Instrument :
 BNA_M
 ClientSampleId :
 090418-DBRI-E-D-M

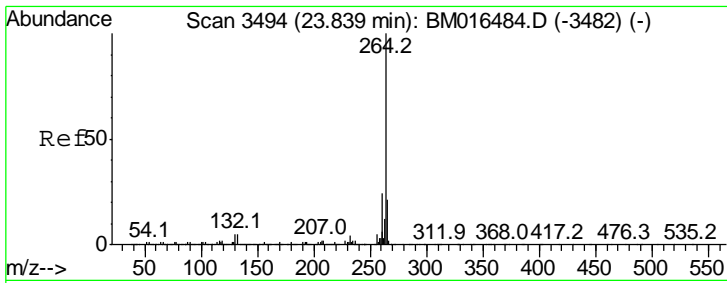
Tgt Ion	Resp	Lower	Upper
240	100		
120	2.6	8.2	12.2#
236	25.6	20.0	30.0



#78
 Terphenyl-d14
 Concen: 135.497 ng
 RT: 19.94 min Scan# 2831
 Delta R.T. -0.04 min
 Lab File: BM016696.D
 Acq: 06 Sep 2018 22:00

Tgt Ion	Resp	Lower	Upper
244	100		
212	9.8	4.9	7.3#
122	3.3	6.2	9.4#





#86
 Perylene-d12
 Concen: 20.000 ng
 RT: 23.76 min Scan# 3480
 Delta R.T. -0.06 min
 Lab File: BM016696.D
 Acq: 06 Sep 2018 22:00

Instrument :
 BNA_M
 ClientSampleId :
 090418-DBRI-E-D-M

Tot Ion: 264 Resp: 650904

Ion	Ratio	Lower	Upper
264	100		
260	24.3	18.6	27.8
265	22.1	17.3	25.9

