

Data Path : Z:\SVOASRV\HPCHEM1\BNA\_M\DATA\BM091118\  
 Data File : BM016715.D  
 Acq On : 11 Sep 2018 10:36  
 Operator : SJ/JU  
 Sample : MDL-W-01  
 Misc : 4PPM/1PPM  
 ALS Vial : 3 Sample Multiplier: 1

Instrument :  
 BNA\_M  
 ClientSampled :  
 MDL-W-01

Manual Integrations  
 APPROVED

Sohil  
 9/12/2018 2:57:31 PM

Quant Time: Sep 11 11:10:04 2018  
 Quant Method : Z:\SVOASRV\HPCHEM1\BNA\_M\METHODS\SOM-EPA-BM091018MA.M  
 Quant Title : SVOA CALIBRATION  
 QLast Update : Mon Sep 10 15:28:07 2018  
 Response via : Initial Calibration

Internal Standards	R.T.	QIon	Response	Conc	Units	Dev(Min)
1) 1,4-Dichlorobenzene-d4	7.74	152	199114	20.00	ng/ul	0.00
18) Naphthalene-d8	10.52	136	841276	20.00	ng/ul	0.00
36) Acenaphthene-d10	14.38	164	453655	20.00	ng/ul	0.00
62) Phenanthrene-d10	17.13	188	971396	20.00	ng/ul	0.00
78) Chrysene-d12	21.32	240	1048922	20.00	ng/ul	0.00
86) Perylene-d12	23.56	264	1085125	20.00	ng/ul	0.00

## System Monitoring Compounds

3) 1,4-Dioxane-d8	3.28	96	30721	6.60	ng/uL	0.00
5) Phenol-d5	6.90	99	457358	27.23	ng/ul	0.00
7) Bis-(2-Chloroethyl)ether-d	7.08	67	296874	28.54	ng/ul	0.00
9) 2-Chlorophenol-d4	7.28	132	382606	27.92	ng/ul	0.00
13) 4-Methylphenol-d8	8.44	113	362325	27.88	ng/ul	0.00
19) Nitrobenzene-d5	8.89	128	159097	28.78	ng/ul	0.00
22) 2-Nitrophenol-d4	9.61	143	145883	29.03	ng/ul	0.00
26) 2,4-Dichlorophenol-d3	10.14	165	339408	26.58	ng/ul	0.00
29) 4-Chloroaniline-d4	10.66	131	471031	30.55	ng/ul	0.00
44) Dimethylphthalate-d6	13.80	166	1019340	27.98	ng/ul	0.00
47) Acenaphthylene-d8	14.07	160	1319780	28.05	ng/ul	0.00
52) 4-Nitrophenol-d4	14.57	143	139567	23.35	ng/ul	0.00
58) Fluorene-d10	15.37	176	887136	27.90	ng/ul	0.00
63) 4,6-Dinitro-2-methylphenol	15.49	200	84381	21.16	ng/ul	0.00
71) Anthracene-d10	17.22	188	1340352	28.60	ng/ul	0.00
79) Pyrene-d10	19.52	212	1429244	28.08	ng/ul	0.00
90) Benzo(a)pyrene-d12	23.42	264	1590248	28.09	ng/ul	0.00

## Target Compounds

Target Compounds	R.T.	QIon	Response	Conc	Units	Qvalue
2) 1,4-Dioxane	3.31	88	8153	1.683	ng/uL#	78
4) Benzaldehyde	6.89	77	11059	1.170	ng/ul	98
6) Phenol	6.93	94	63271	3.774	ng/ul	98
8) Bis(2-Chloroethyl)ether	7.18	93	50457	3.909	ng/ul	92
10) 2-Chlorophenol	7.30	128	53484	3.885	ng/ul	99
11) 2-Methylphenol	8.17	108	45212	3.598	ng/ul	94
12) 2,2'-oxybis(1-Chloropropan	8.27	45	81196m	3.978	ng/ul	
14) Acetophenone	8.56	105	81134	4.028	ng/ul	98
15) N-Nitroso-di-n-propylamine	8.55	70	37038	3.675	ng/ul#	90
16) 4-Methylphenol	8.50	108	50489	3.802	ng/ul	97
17) Hexachloroethane	8.81	117	20749	3.837	ng/ul	87
20) Nitrobenzene	8.93	77	57561	4.117	ng/ul	99
21) Isophorone	9.46	82	99011	3.563	ng/ul	97
23) 2-Nitrophenol	9.64	139	22800	3.930	ng/ul	94
24) 2,4-Dimethylphenol	9.70	107	55723	3.722	ng/ul	95
25) Bis(2-Chloroethoxy)methane	9.95	93	65361	3.805	ng/ul	95
27) 2,4-Dichlorophenol	10.16	162	47588	3.878	ng/ul	89
28) Naphthalene	10.57	128	171837	3.972	ng/ul	99
30) 4-Chloroaniline	10.68	127	45546	2.953	ng/ul	91
31) Hexachlorobutadiene	10.86	225	32635	3.940	ng/ul	95
32) Caprolactam	11.45	113	11008m	2.837	ng/ul	
33) 4-Chloro-3-methylphenol	11.80	107	43991	3.421	ng/ul	93
34) 2-Methylnaphthalene	12.19	142	118107	3.875	ng/ul	98

Data Path : Z:\SVOASRV\HPCHEM1\BNA\_M\DATA\BM091118\  
 Data File : BM016715.D  
 Acq On : 11 Sep 2018 10:36  
 Operator : SJ/JU  
 Sample : MDL-W-01  
 Misc : 4PPM/1PPM  
 ALS Vial : 3 Sample Multiplier: 1

Instrument :  
 BNA\_M  
 ClientSampled :  
 MDL-W-01

Manual Integrations  
 APPROVED

Sohil  
 9/12/2018 2:57:31 PM

Quant Time: Sep 11 11:10:04 2018  
 Quant Method : Z:\SVOASRV\HPCHEM1\BNA\_M\METHODS\SOM-EPA-BM091018MA.M  
 Quant Title : SVOA CALIBRATION  
 QLast Update : Mon Sep 10 15:28:07 2018  
 Response via : Initial Calibration

Internal Standards	R.T.	QIon	Response	Conc	Units	Dev(Min)
35) 1-Methylnaphthalene	12.19	142	118107	3.875	ng/ul#	91
37) 1,2,4,5-Tetrachlorobenzene	12.56	216	60551	3.886	ng/ul#	96
38) Hexachlorocyclopentadiene	12.54	237	33218	3.424	ng/ul	98
39) 2,4,6-Trichlorophenol	12.80	196	29413	3.315	ng/ul	97
40) 2,4,5-Trichlorophenol	12.86	196	34060	3.518	ng/ul	98
41) 1,1'-Biphenyl	13.21	154	148025	3.922	ng/ul	98
42) 2-Chloronaphthalene	13.25	162	115440	3.909	ng/ul	97
43) 2-Nitroaniline	13.45	65	20526	3.155	ng/ul	87
45) Dimethylphthalate	13.84	163	137660	3.867	ng/ul	99
46) 2,6-Dinitrotoluene	13.96	165	15742	2.879	ng/ul	90
48) Acenaphthylene	14.10	152	173137	3.888	ng/ul	98
49) 3-Nitroaniline	14.28	138	16830	2.831	ng/ul#	84
50) Acenaphthene	14.44	153	123766	3.915	ng/ul	98
51) 2,4-Dinitrophenol	14.48	184	5206	2.129	ng/ul#	70
53) 4-Nitrophenol	14.58	109	15636	3.394	ng/ul#	51
54) Dibenzofuran	14.78	168	173538	4.001	ng/ul	96
55) 2,4-Dinitrotoluene	14.74	165	24979	3.107	ng/ul	89
56) 2,3,4,6-Tetrachlorophenol	15.00	232	24667	3.150	ng/ul#	92
57) Diethylphthalate	15.22	149	129032	3.659	ng/ul	97
59) Fluorene	15.43	166	137343	3.854	ng/ul	97
60) 4-Chlorophenyl-phenylether	15.43	204	71868	3.977	ng/ul	94
61) 4-Nitroaniline	15.44	138	20462	2.802	ng/ul	95
64) 4,6-Dinitro-2-methylphenol	15.50	198	13390	2.995	ng/ul#	53
65) N-Nitrosodiphenylamine	15.65	169	116217	3.868	ng/ul	99
66) 4-Bromophenyl-phenylether	16.33	248	41292	3.757	ng/ul	94
67) Hexachlorobenzene	16.43	284	46412	3.924	ng/ul#	93
68) Atrazine	16.60	200	34490	3.248	ng/ul	95
69) Pentachlorophenol	16.77	266	16842	2.633	ng/ul	91
70) Phenanthrene	17.17	178	216684	4.016	ng/ul	97
72) Anthracene	17.26	178	217313	3.923	ng/ul	99
73) 1,2,3,4-Tetrachlorobenzene	13.17	216	63831	3.970	ng/uL	96
74) Pentachlorobenzene	14.69	250	58698	4.047	ng/uL	99
75) Carbazole	17.53	167	180319	3.703	ng/ul	98
76) Di-n-butylphthalate	18.12	149	179484	3.168	ng/ul	99
77) Fluoranthene	19.19	202	230731	3.730	ng/ul#	90
80) Pyrene	19.54	202	254059	3.945	ng/ul#	87
81) Butylbenzylphthalate	20.47	149	68163	2.862	ng/ul	97
82) 3,3'-Dichlorobenzidine	21.24	252	62646	3.015	ng/ul#	92
83) Benzo(a)anthracene	21.30	228	247535	3.812	ng/ul	99
84) Bis(2-ethylhexyl)phthalate	21.26	149	107055	2.860	ng/ul	98
85) Chrysene	21.35	228	233582	3.857	ng/ul	98
87) Di-n-octyl phthalate	22.15	149	179817	2.758	ng/ul	100
88) Benzo(b)fluoranthene	22.89	252	246767	3.799	ng/ul#	97
89) Benzo(k)fluoranthene	22.93	252	227863	3.654	ng/ul#	96
91) Benzo(a)pyrene	23.46	252	241845	3.906	ng/ul#	95
92) Indeno(1,2,3-cd)pyrene	25.81	276	268487	3.635	ng/ul#	91
93) Dibenzo(a,h)anthracene	25.83	278	226416	3.665	ng/ul#	94
94) Benzo(g,h,i)perylene	26.50	276	225296	3.679	ng/ul#	92

Data Path : Z:\SVOASRV\HPCHEM1\BNA\_M\DATA\BM091118\  
 Data File : BM016715.D  
 Acq On : 11 Sep 2018 10:36  
 Operator : SJ/JU  
 Sample : MDL-W-01  
 Misc : 4PPM/1PPM  
 ALS Vial : 3 Sample Multiplier: 1

**Instrument :**  
 BNA\_M  
**ClientSampleId :**  
 MDL-W-01

**Manual Integrations**  
**APPROVED**  
 Sohil  
 9/12/2018 2:57:31 PM

Quant Time: Sep 11 11:10:04 2018  
 Quant Method : Z:\SVOASRV\HPCHEM1\BNA\_M\METHODS\SOM-EPA-BM091018MA.M  
 Quant Title : SVOA CALIBRATION  
 QLast Update : Mon Sep 10 15:28:07 2018  
 Response via : Initial Calibration

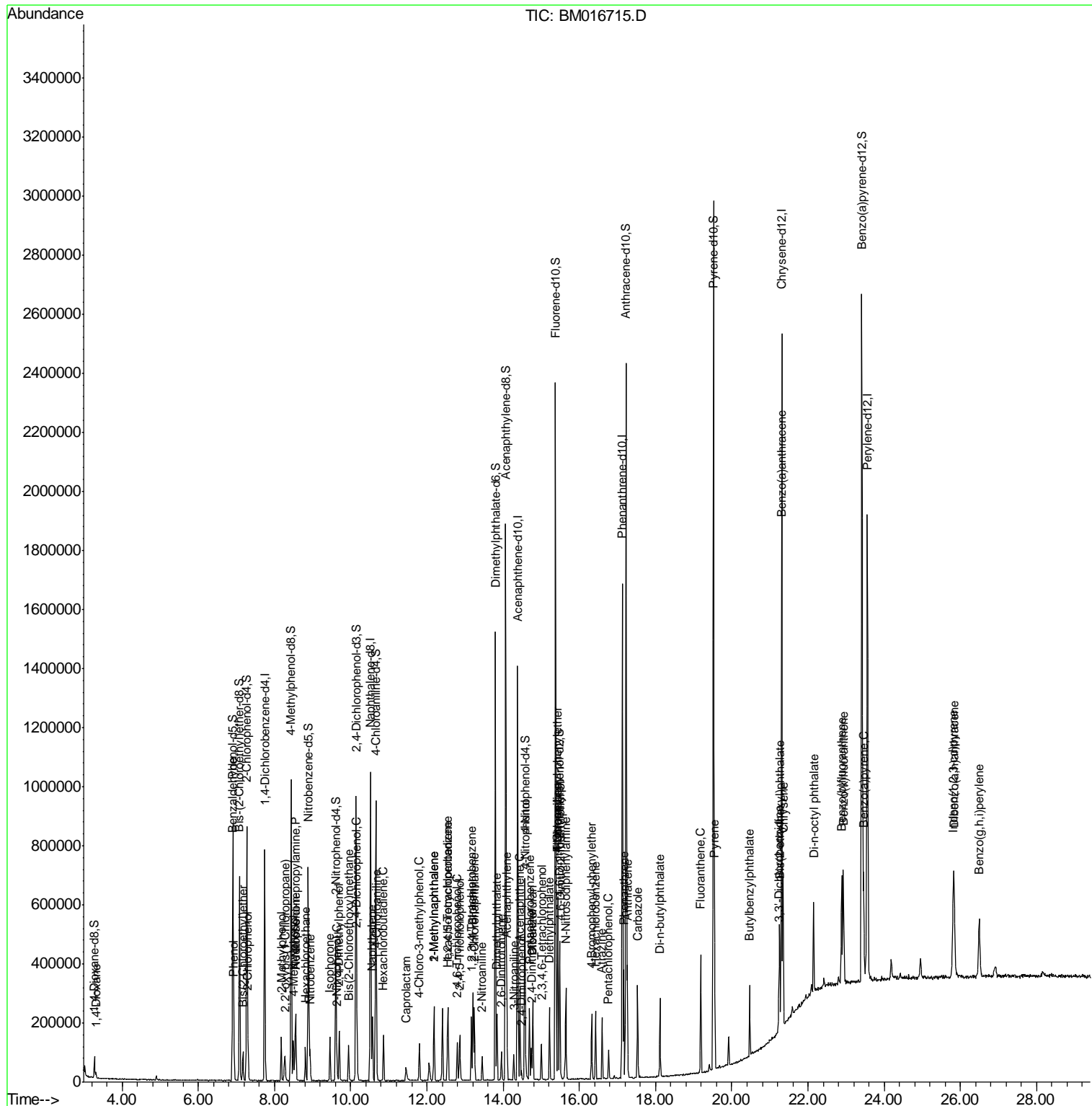
Internal Standards	R.T.	QIon	Response	Conc	Units	Dev(Min)
-----						
(#) = qualifier out of range (m) = manual integration (+) = signals summed						

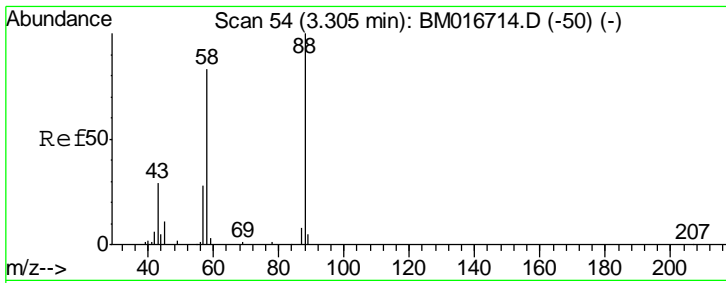
Data Path : Z:\SVOASRV\HPCHEM1\BNA\_M\DATA\BM091118\  
Data File : BM016715.D  
Acq On : 11 Sep 2018 10:36  
Operator : SJ/JU  
Sample : MDL-W-01  
Misc : 4PPM/1PPM  
ALS Vial : 3 Sample Multiplier: 1

Instrument :  
BNA\_M  
Client Sampled :  
MDL-W-01

Manual Integrations  
APPROVED  
Sohil  
9/12/2018 2:57:31 PM

Quant Time: Sep 11 11:10:04 2018  
Quant Method : Z:\SVOASRV\HPCHEM1\BNA\_M\METHODS\SOM-EPA-BM091018MA.M  
Quant Title : SVOA CALIBRATION  
QLast Update : Mon Sep 10 15:28:07 2018  
Response via : Initial Calibration





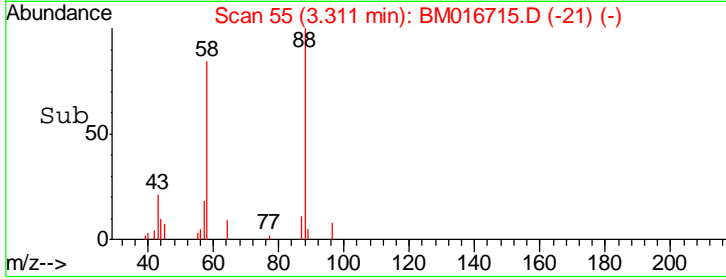
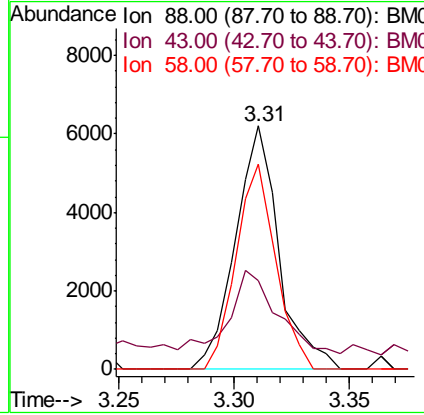
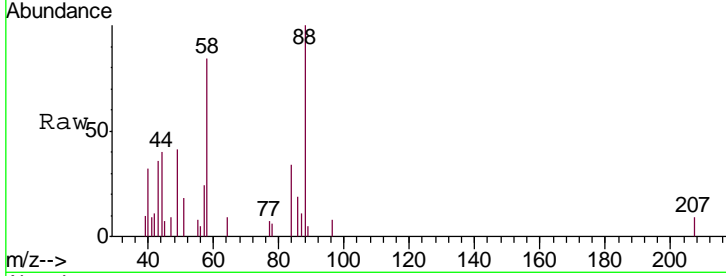
#2  
 1,4-Dioxane  
 Concen: 1.683 ng/uL  
 RT: 3.31 min Scan# 55  
 Delta R.T. 0.00 min  
 Lab File: BM016715.D  
 Acq: 11 Sep 2018 10:36

**Instrument :**  
 BNA\_M  
**ClientSampled :**  
 MDL-W-01

Tgt Ion	Resp	Lower	Upper
88	100		
43	36.4	29.0	43.4
58	84.2	45.9	68.9#

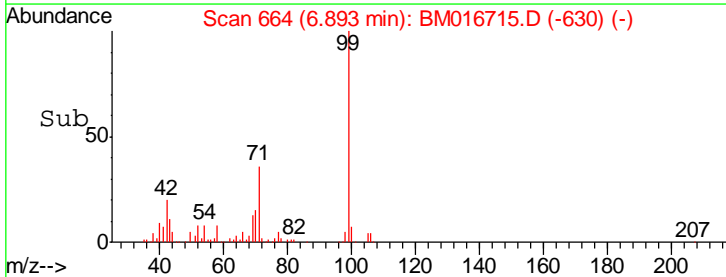
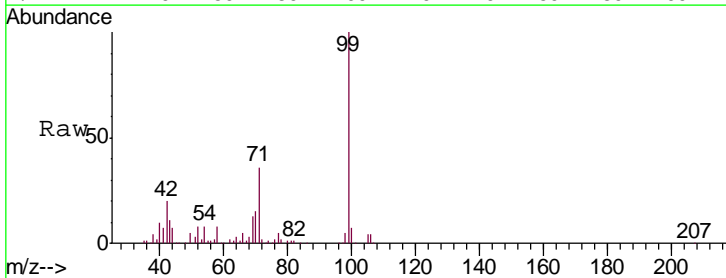
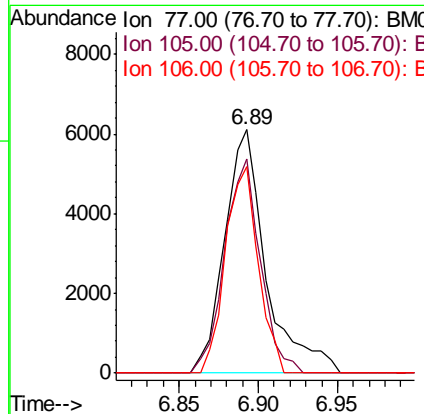
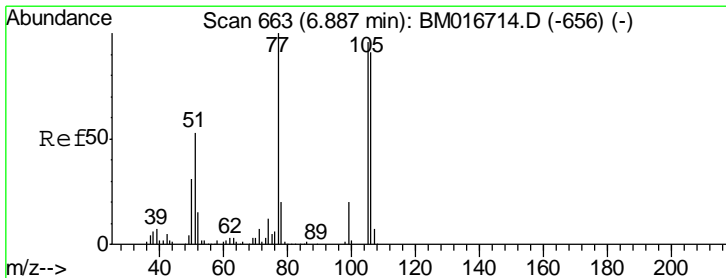
**Manual Integrations**  
**APPROVED**

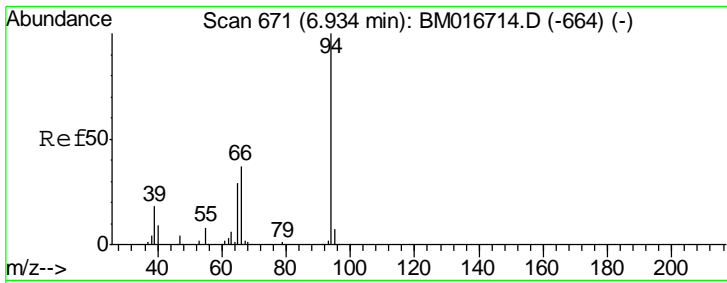
Sohil  
 9/12/2018 2:57:31 PM



#4  
 Benzaldehyde  
 Concen: 1.170 ng/uL  
 RT: 6.89 min Scan# 664  
 Delta R.T. 0.00 min  
 Lab File: BM016715.D  
 Acq: 11 Sep 2018 10:36

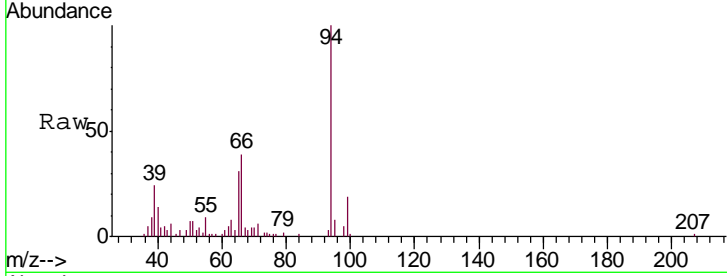
Tgt Ion	Resp	Lower	Upper
77	100		
105	87.9	71.0	106.6
106	84.7	69.5	104.3





#6  
 Phenol  
 Concen: 3.774 ng/ul  
 RT: 6.93 min Scan# 671  
 Delta R.T. 0.00 min  
 Lab File: BM016715.D  
 Acq: 11 Sep 2018 10:36

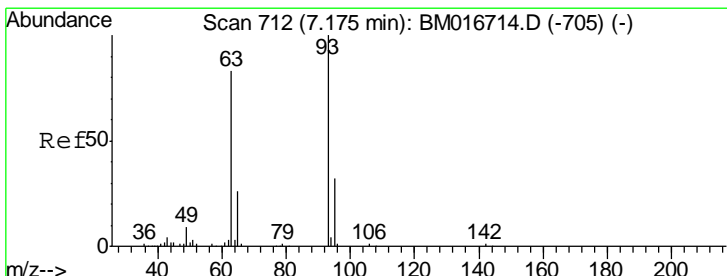
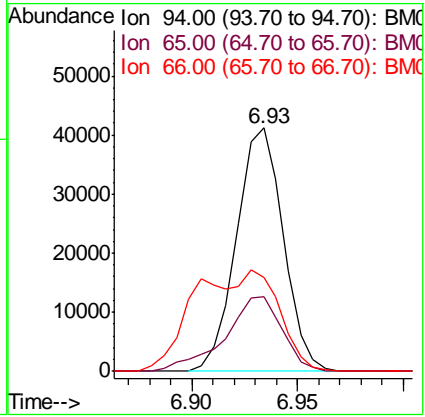
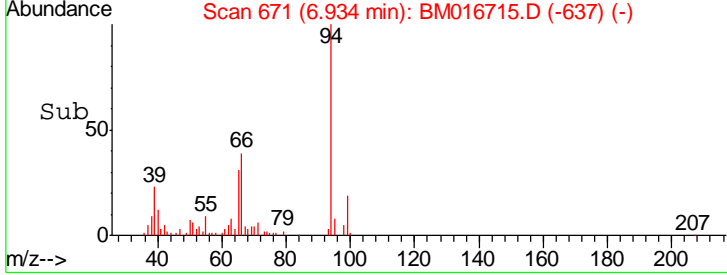
**Instrument :**  
 BNA\_M  
**ClientSampled :**  
 MDL-W-01



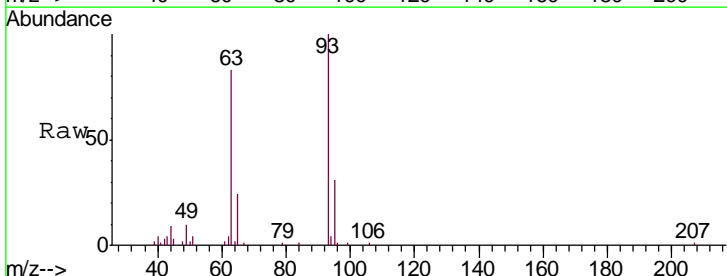
Tgt Ion: 94 Resp: 63271

Ion	Ratio	Lower	Upper
94	100		
65	30.5	23.0	34.6
66	38.8	30.4	45.6

**Manual Integrations**  
**APPROVED**  
 Sohil  
 9/12/2018 2:57:31 PM

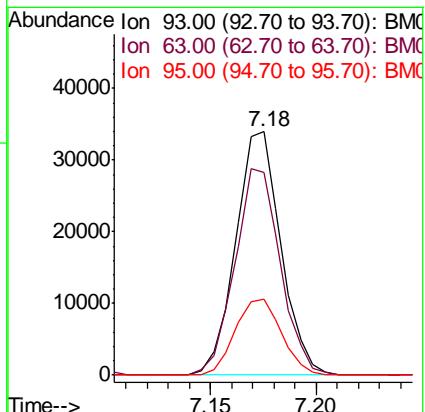
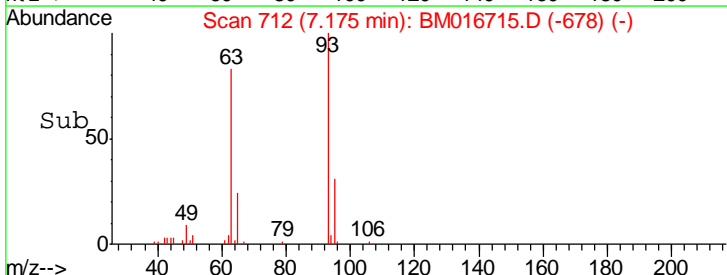


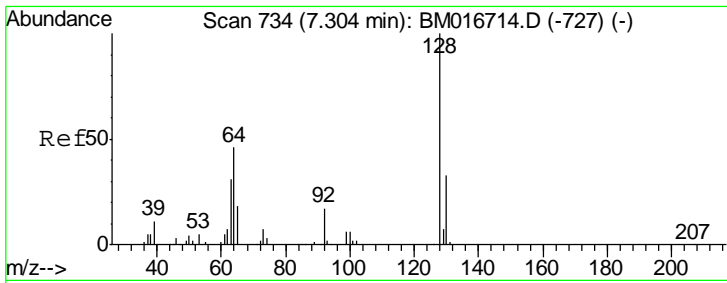
#8  
 Bis(2-Chloroethyl)ether  
 Concen: 3.909 ng/ul  
 RT: 7.18 min Scan# 712  
 Delta R.T. 0.00 min  
 Lab File: BM016715.D  
 Acq: 11 Sep 2018 10:36



Tgt Ion: 93 Resp: 50457

Ion	Ratio	Lower	Upper
93	100		
63	83.1	59.4	89.2
95	31.3	26.4	39.6





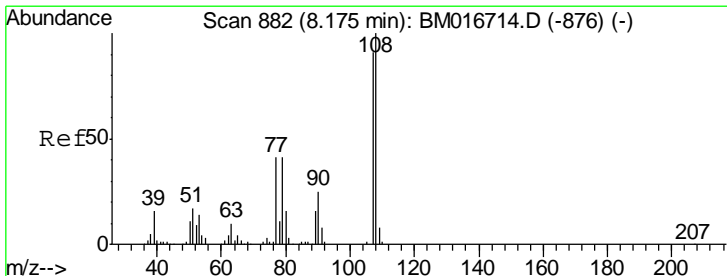
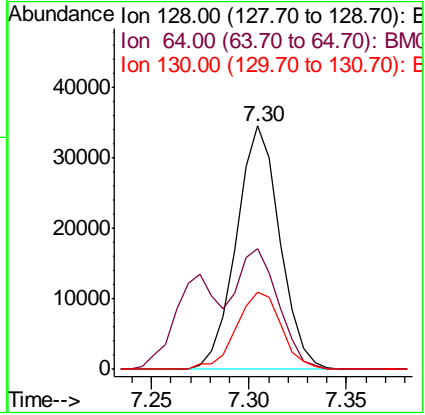
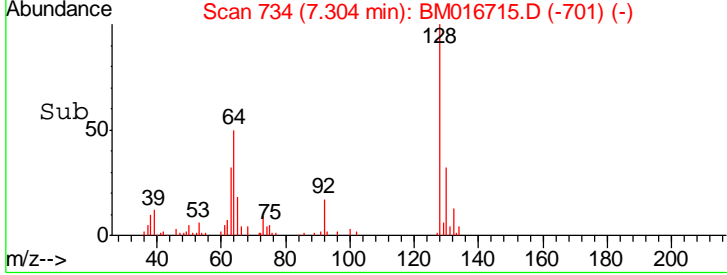
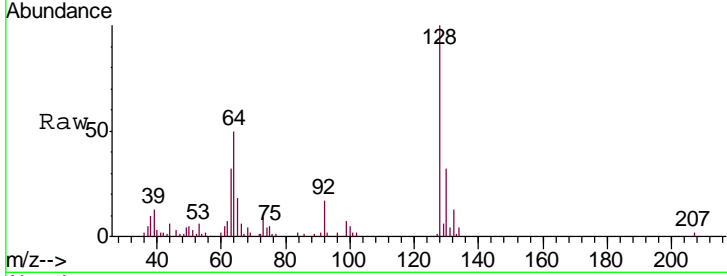
#10  
 2-Chlorophenol  
 Concen: 3.885 ng/ul  
 RT: 7.30 min Scan# 734  
 Delta R.T. -0.01 min  
 Lab File: BM016715.D  
 Acq: 11 Sep 2018 10:36

**Instrument :**  
 BNA\_M  
**ClientSampled :**  
 MDL-W-01

Tgt Ion	Resp	Lower	Upper
128	100		
64	49.8	39.8	59.6
130	31.7	25.8	38.8

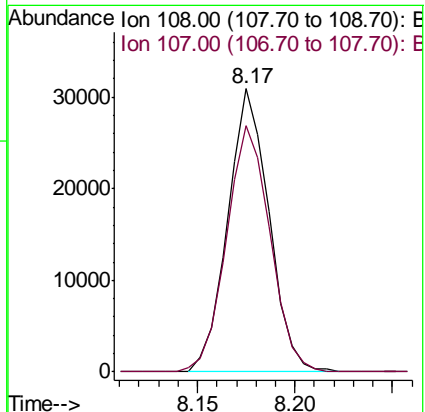
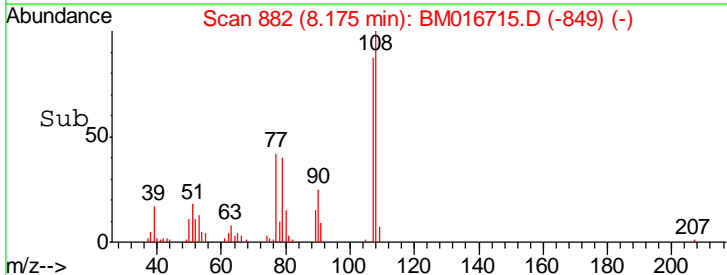
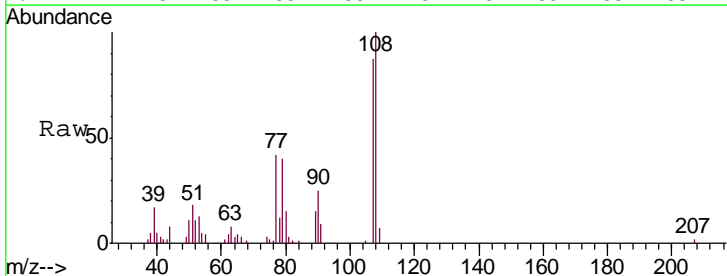
**Manual Integrations**  
**APPROVED**

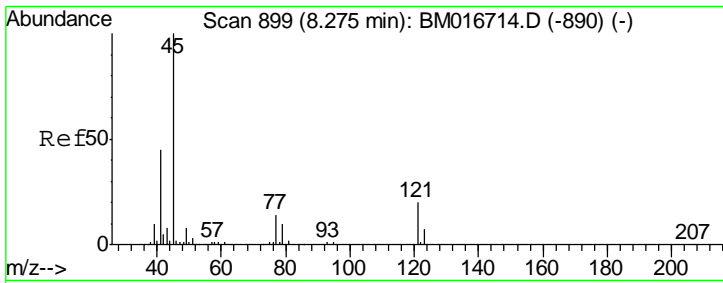
Sohil  
 9/12/2018 2:57:31 PM



#11  
 2-Methylphenol  
 Concen: 3.598 ng/ul  
 RT: 8.17 min Scan# 882  
 Delta R.T. -0.01 min  
 Lab File: BM016715.D  
 Acq: 11 Sep 2018 10:36

Tgt Ion	Resp	Lower	Upper
108	100		
107	87.2	74.1	111.1





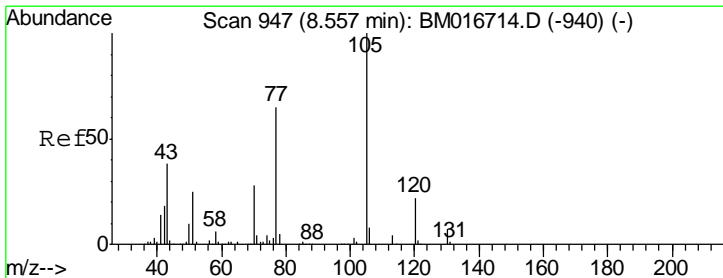
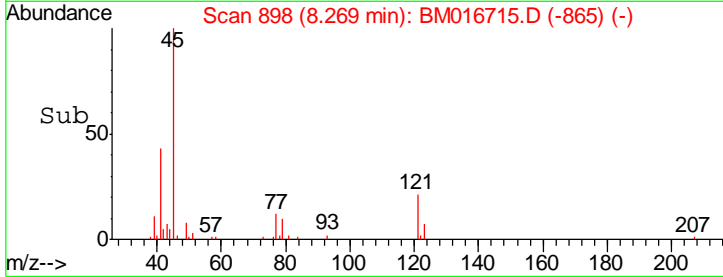
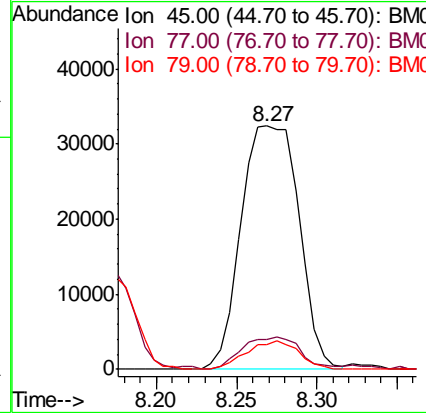
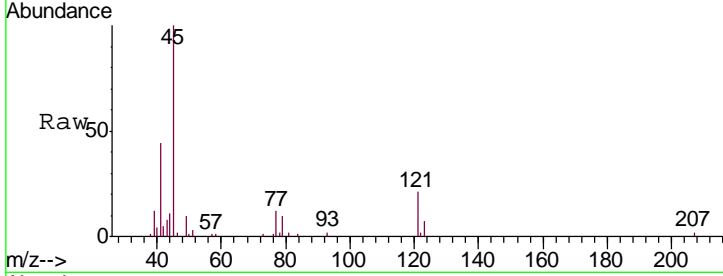
#12  
 2,2'-oxybis(1-Chloropropane)  
 Concen: 3.978 ng/ul m  
 RT: 8.27 min Scan# 898  
 Delta R.T. -0.01 min  
 Lab File: BM016715.D  
 Acq: 11 Sep 2018 10:36

Instrument :  
 BNA\_M  
 ClientSampled :  
 MDL-W-01

Tgt Ion	Resp	Lower	Upper
45	100		
77	12.1	12.5	18.7#
79	10.2	9.4	14.2

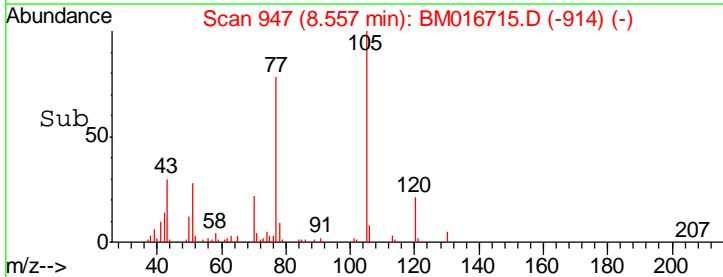
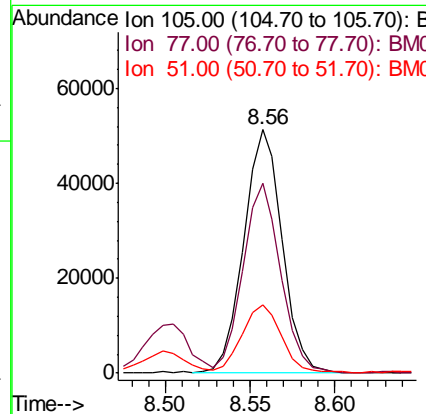
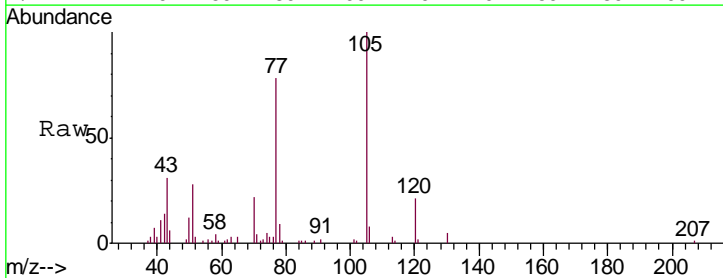
Manual Integrations  
 APPROVED

Sohil  
 9/12/2018 2:57:31 PM

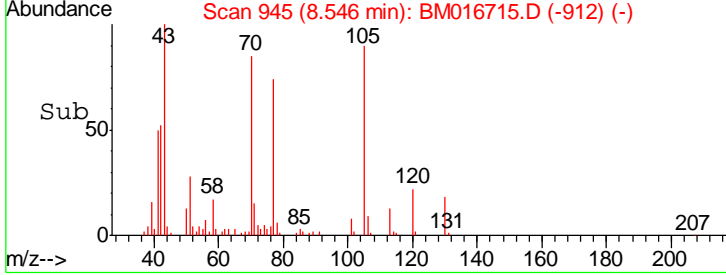
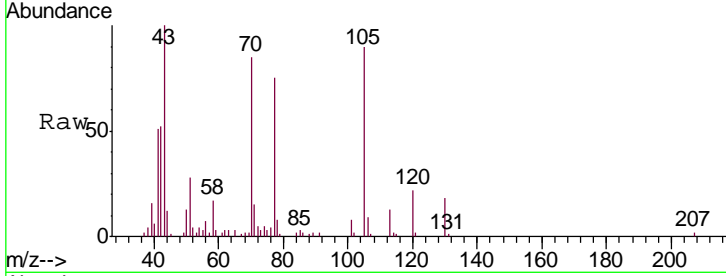
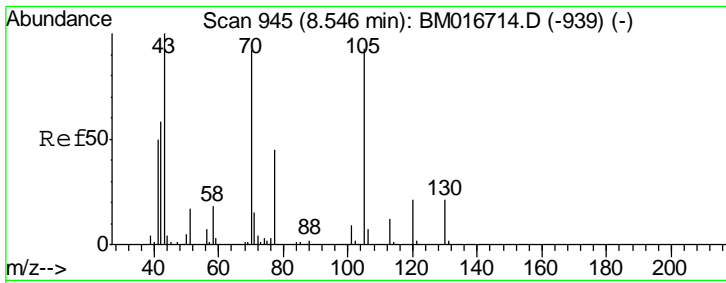


#14  
 Acetophenone  
 Concen: 4.028 ng/ul  
 RT: 8.56 min Scan# 947  
 Delta R.T. -0.01 min  
 Lab File: BM016715.D  
 Acq: 11 Sep 2018 10:36

Tgt Ion	Resp	Lower	Upper
105	100		
77	77.9	63.2	94.8
51	28.0	19.8	29.8





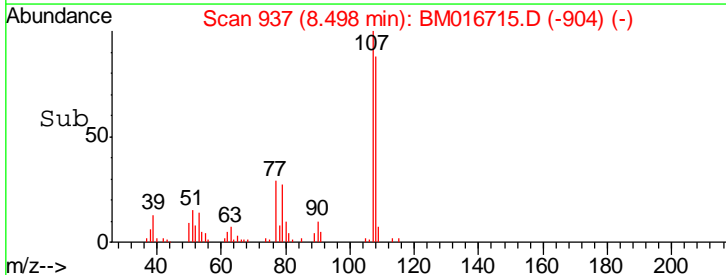
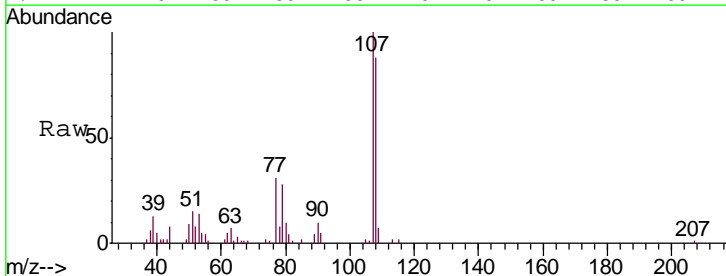
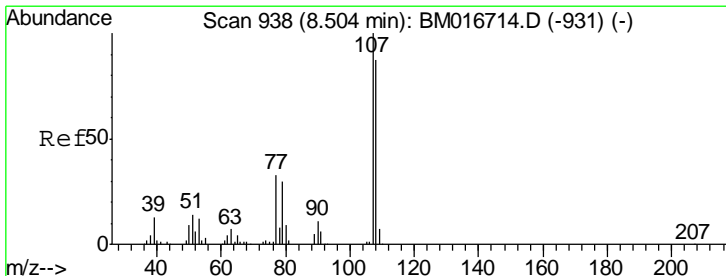
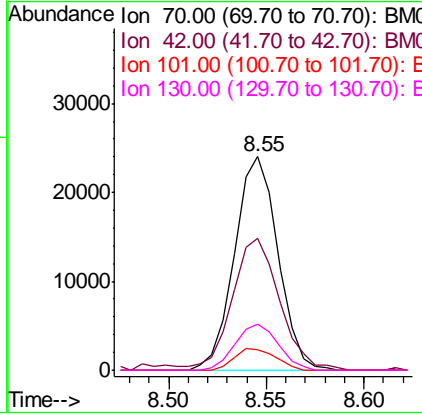


#15  
 N-Nitroso-di-n-propylamine  
 Concen: 3.675 ng/ul  
 RT: 8.55 min Scan# 945  
 Delta R.T. -0.01 min  
 Lab File: BM016715.D  
 Acq: 11 Sep 2018 10:36

Tgt Ion	Resp	Lower	Upper
70	37038		
70	100		
42	61.6	40.2	60.4#
101	9.4	7.7	11.5
130	21.7	17.8	26.6

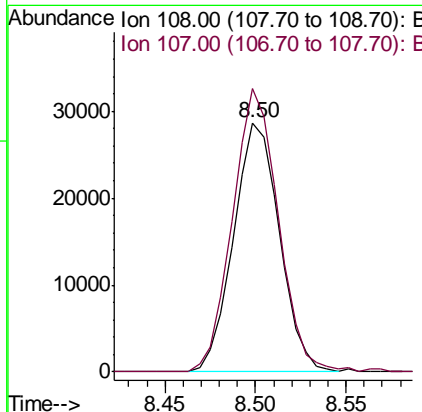
**Instrument :**  
 BNA\_M  
**ClientSampled :**  
 MDL-W-01

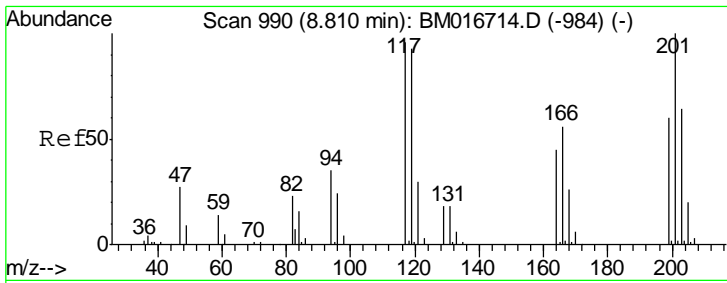
**Manual Integrations**  
**APPROVED**  
 Sohil  
 9/12/2018 2:57:31 PM



#16  
 4-Methylphenol  
 Concen: 3.802 ng/ul  
 RT: 8.50 min Scan# 937  
 Delta R.T. -0.01 min  
 Lab File: BM016715.D  
 Acq: 11 Sep 2018 10:36

Tgt Ion	Resp	Lower	Upper
108	50489		
108	100		
107	113.7	93.6	140.4





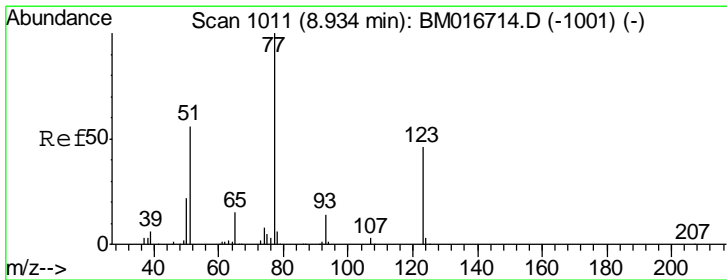
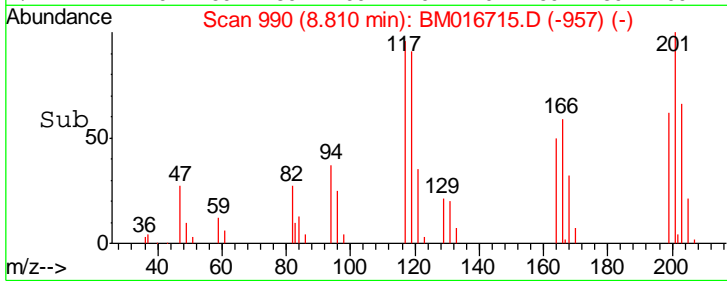
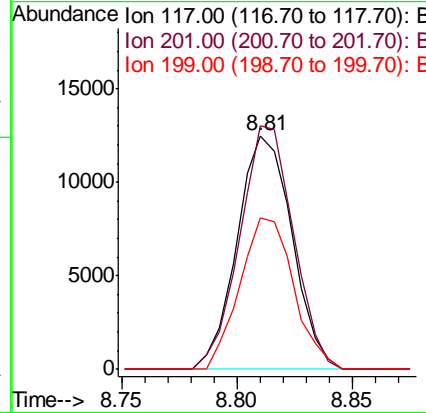
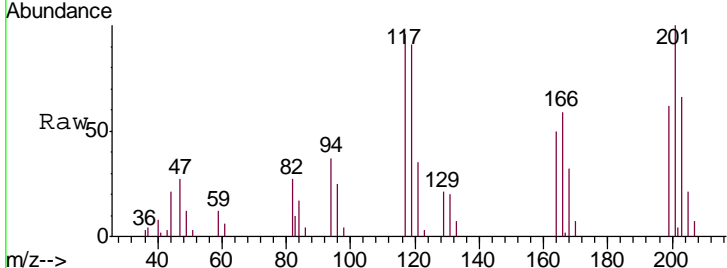
#17  
 Hexachloroethane  
 Concen: 3.837 ng/ul  
 RT: 8.81 min Scan# 990  
 Delta R.T. -0.01 min  
 Lab File: BM016715.D  
 Acq: 11 Sep 2018 10:36

Instrument :  
 BNA\_M  
 Client Sampled :  
 MDL-W-01

Tgt Ion	Resp	Lower	Upper
117	100		
201	104.1	96.1	144.1
199	64.8	59.7	89.5

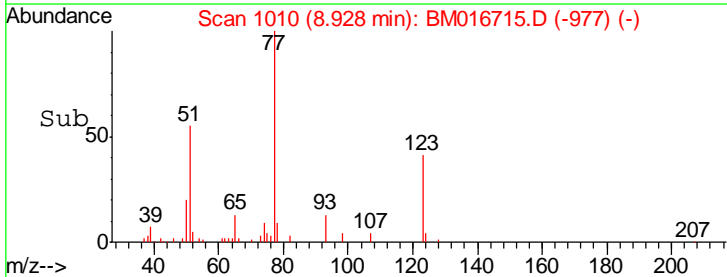
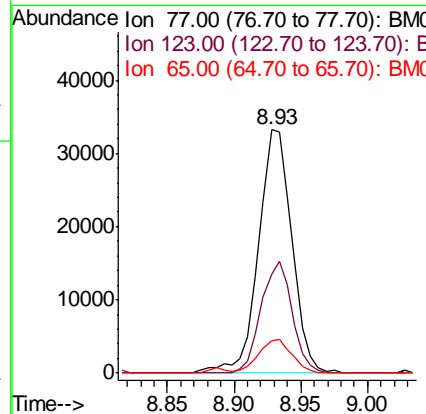
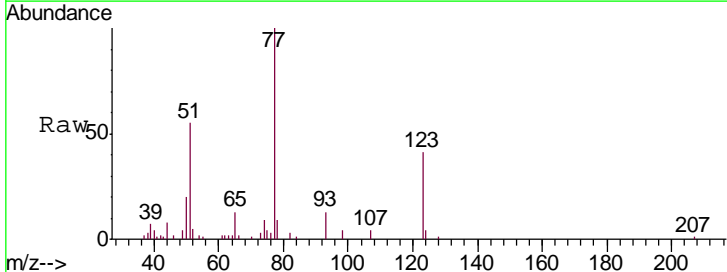
Manual Integrations  
 APPROVED

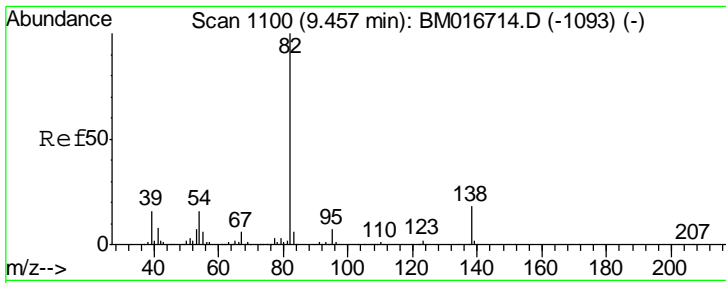
Sohil  
 9/12/2018 2:57:31 PM



#20  
 Nitrobenzene  
 Concen: 4.117 ng/ul  
 RT: 8.93 min Scan# 1010  
 Delta R.T. -0.01 min  
 Lab File: BM016715.D  
 Acq: 11 Sep 2018 10:36

Tgt Ion	Resp	Lower	Upper
77	100		
123	40.9	31.8	47.8
65	13.5	10.6	16.0





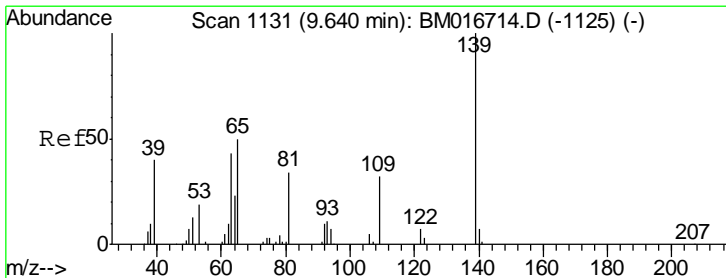
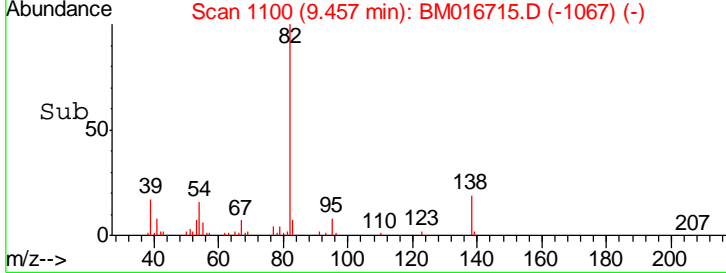
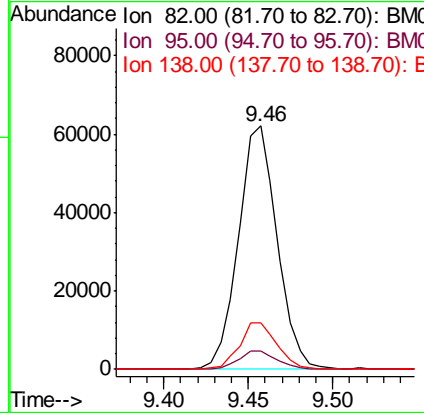
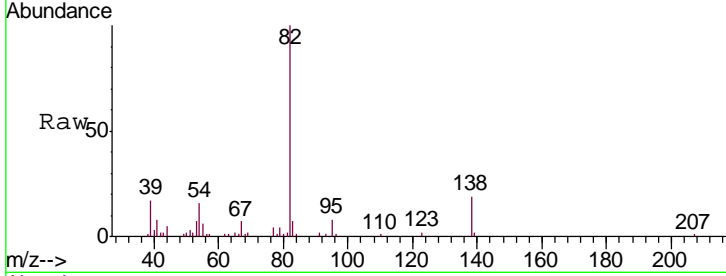
#21  
 Isophorone  
 Concen: 3.563 ng/ul  
 RT: 9.46 min Scan# 1100  
 Delta R.T. -0.01 min  
 Lab File: BM016715.D  
 Acq: 11 Sep 2018 10:36

**Instrument :**  
 BNA\_M  
**ClientSampled :**  
 MDL-W-01

Tgt Ion	Resp	Lower	Upper
82	100		
95	7.7	6.1	9.1
138	18.9	13.5	20.3

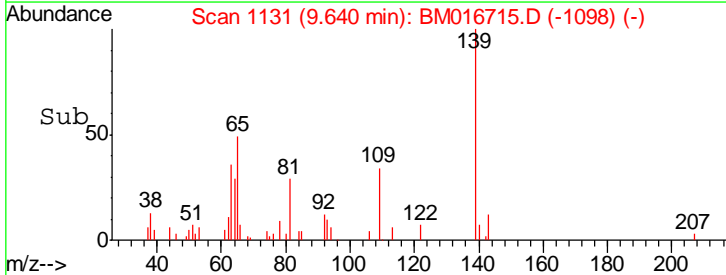
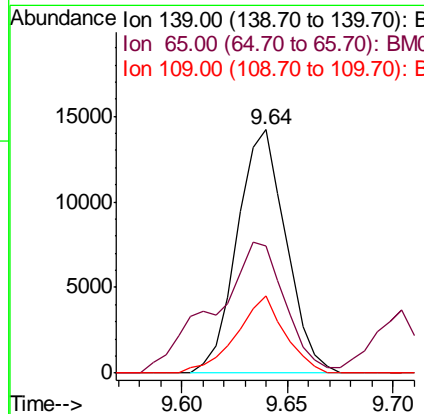
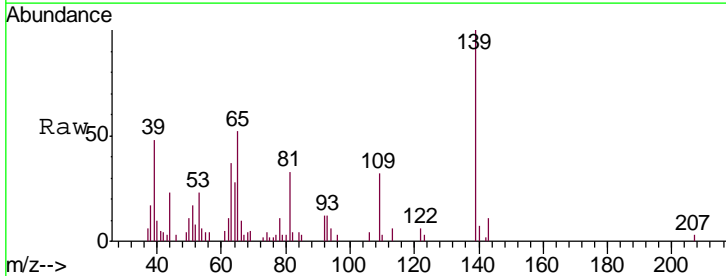
**Manual Integrations**  
**APPROVED**

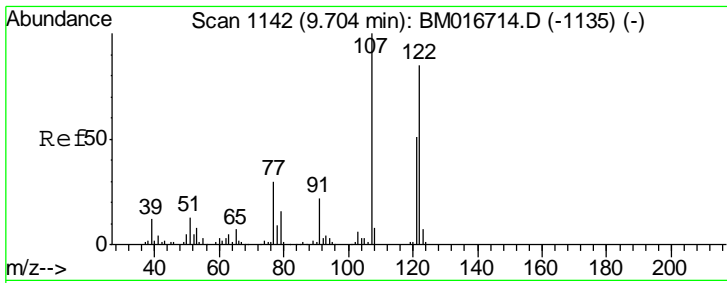
Sohil  
 9/12/2018 2:57:31 PM



#23  
 2-Nitrophenol  
 Concen: 3.930 ng/ul  
 RT: 9.64 min Scan# 1131  
 Delta R.T. -0.01 min  
 Lab File: BM016715.D  
 Acq: 11 Sep 2018 10:36

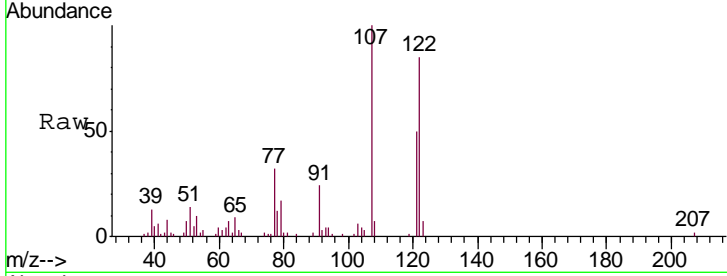
Tgt Ion	Resp	Lower	Upper
139	100		
65	52.0	45.3	67.9
109	31.8	27.7	41.5





#24  
 2,4-Dimethylphenol  
 Concen: 3.722 ng/ul  
 RT: 9.70 min Scan# 1141  
 Delta R.T. -0.01 min  
 Lab File: BM016715.D  
 Acq: 11 Sep 2018 10:36

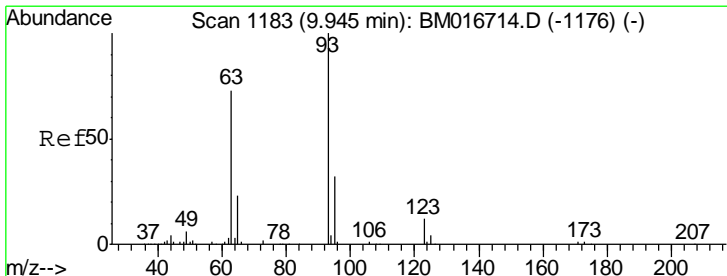
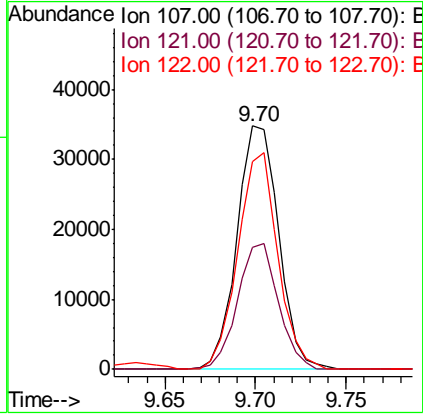
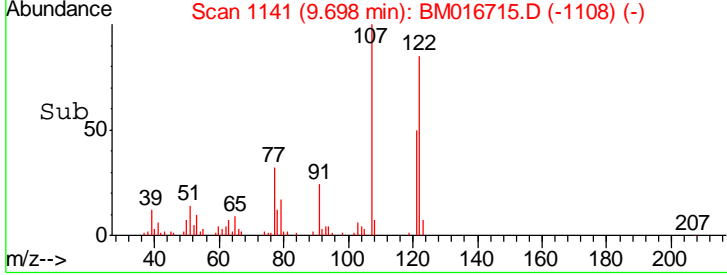
**Instrument :**  
 BNA\_M  
**ClientSampled :**  
 MDL-W-01



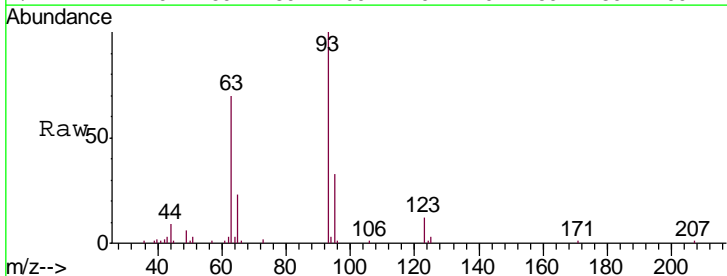
Tgt Ion: 107 Resp: 55723

Ion	Ratio	Lower	Upper
107	100		
121	50.1	38.1	57.1
122	85.4	63.8	95.8

**Manual Integrations**  
**APPROVED**  
 Sohil  
 9/12/2018 2:57:31 PM

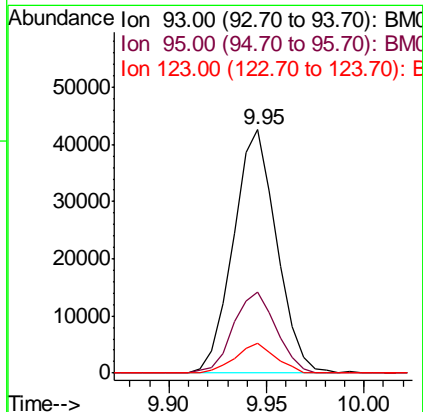
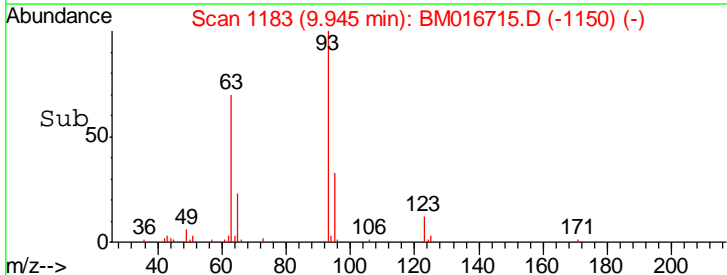


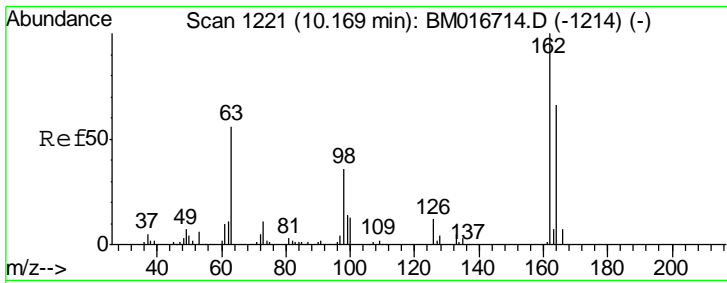
#25  
 Bis(2-Chloroethoxy)methane  
 Concen: 3.805 ng/ul  
 RT: 9.95 min Scan# 1183  
 Delta R.T. -0.01 min  
 Lab File: BM016715.D  
 Acq: 11 Sep 2018 10:36



Tgt Ion: 93 Resp: 65361

Ion	Ratio	Lower	Upper
93	100		
95	33.3	24.7	37.1
123	12.1	8.2	12.2





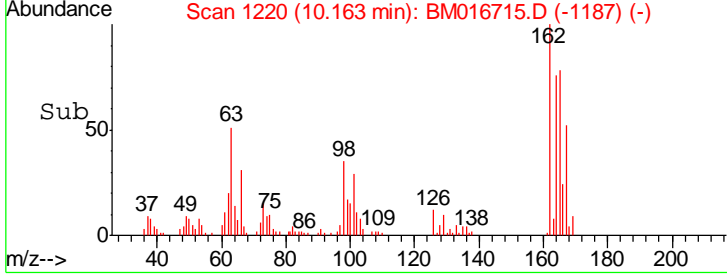
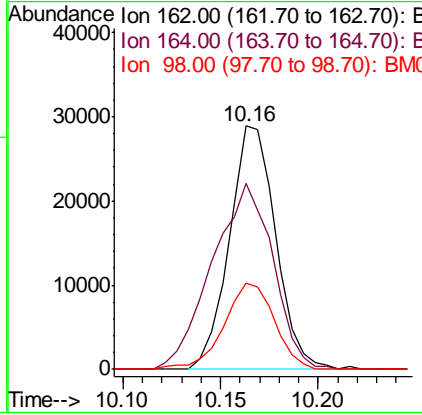
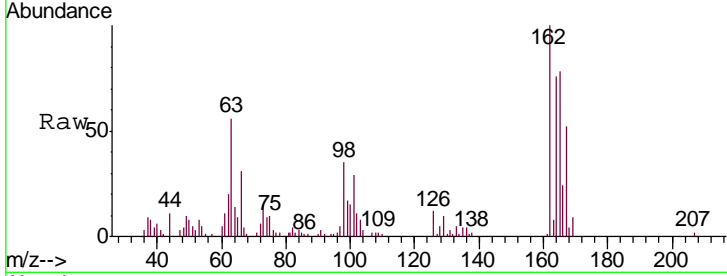
#27  
 2,4-Dichlorophenol  
 Concen: 3.878 ng/ul  
 RT: 10.16 min Scan# 1220  
 Delta R.T. -0.01 min  
 Lab File: BM016715.D  
 Acq: 11 Sep 2018 10:36

**Instrument :**  
 BNA\_M  
**ClientSampled :**  
 MDL-W-01

Tgt Ion	Resp	Lower	Upper
162	47588		
164	76.2	52.0	78.0
98	35.4	26.6	39.8

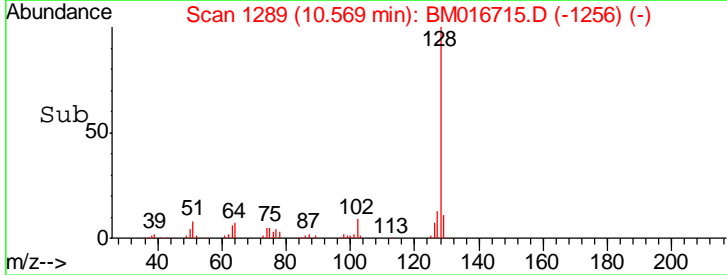
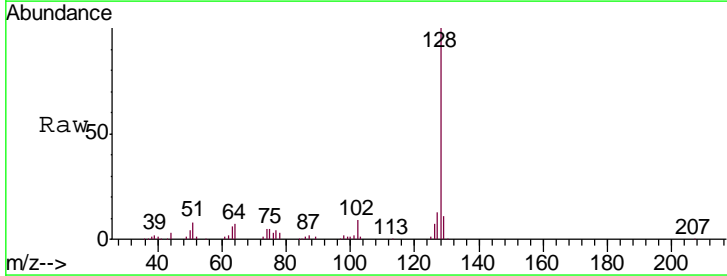
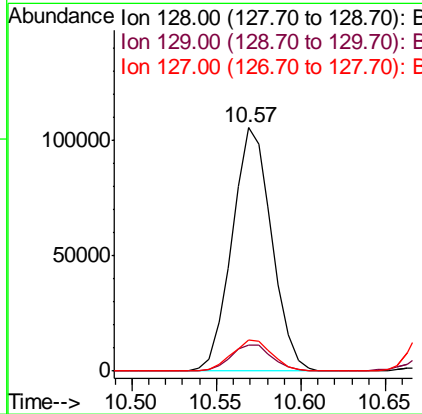
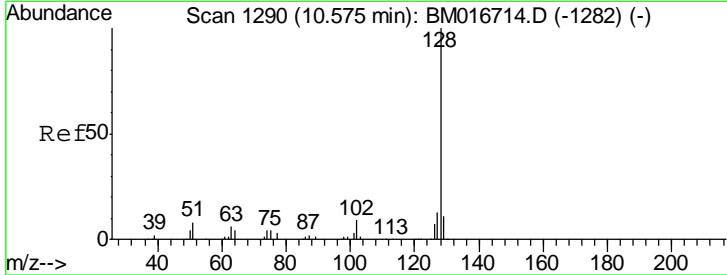
**Manual Integrations**  
**APPROVED**

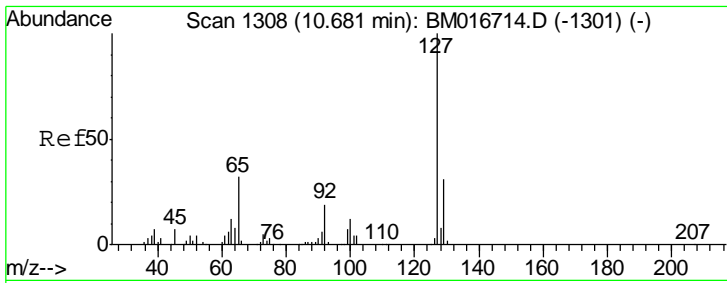
Sohil  
 9/12/2018 2:57:31 PM



#28  
 Naphthalene  
 Concen: 3.972 ng/ul  
 RT: 10.57 min Scan# 1289  
 Delta R.T. -0.01 min  
 Lab File: BM016715.D  
 Acq: 11 Sep 2018 10:36

Tgt Ion	Resp	Lower	Upper
128	171837		
129	10.8	8.3	12.5
127	12.9	10.8	16.2



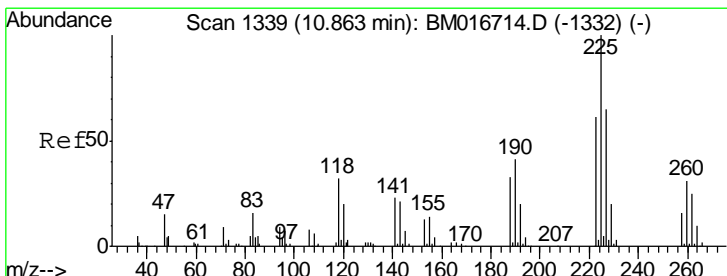
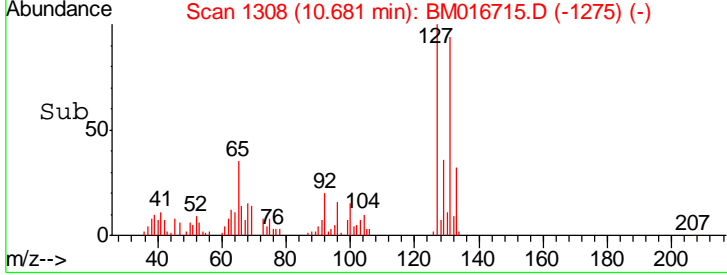
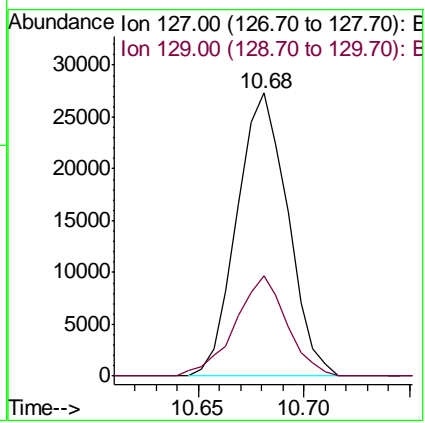
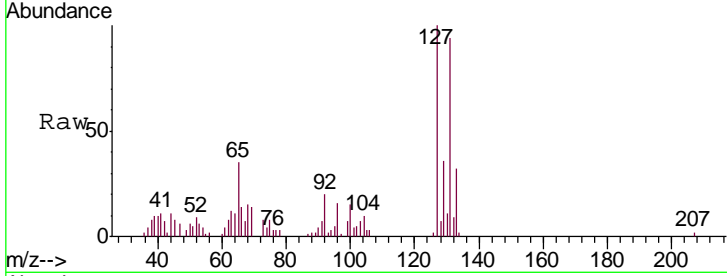


#30  
 4-Chloroaniline  
 Concen: 2.953 ng/ul  
 RT: 10.68 min Scan# 1308  
 Delta R.T. -0.01 min  
 Lab File: BM016715.D  
 Acq: 11 Sep 2018 10:36

**Instrument :**  
 BNA\_M  
**ClientSampled :**  
 MDL-W-01

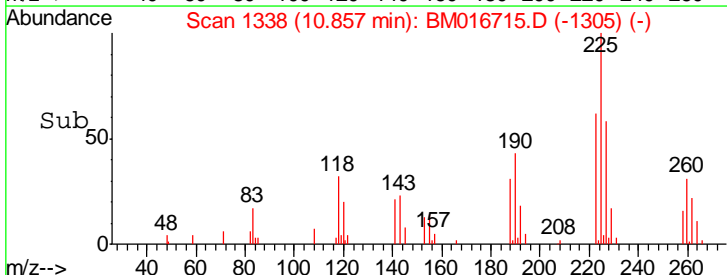
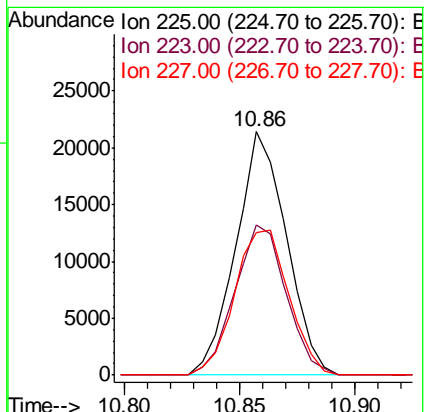
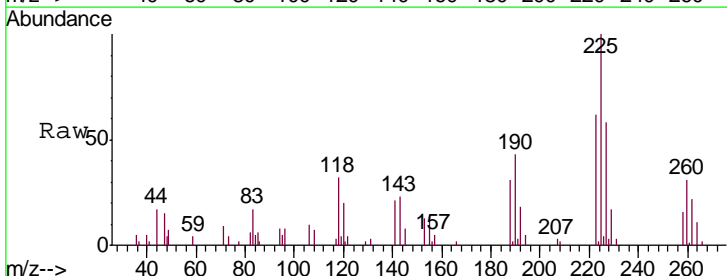
Tgt Ion	Resp	Lower	Upper
127	100		
129	35.5	24.6	37.0

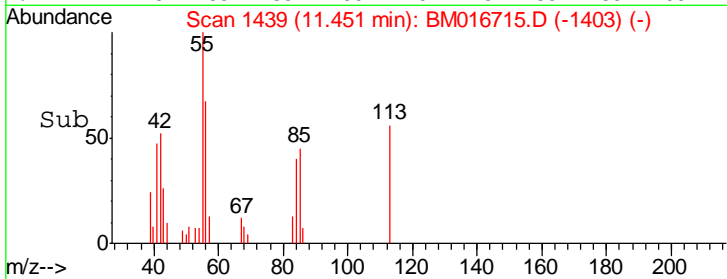
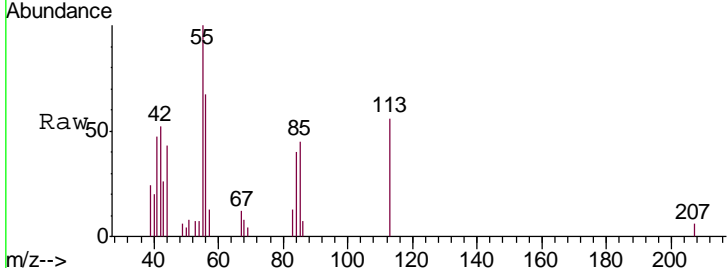
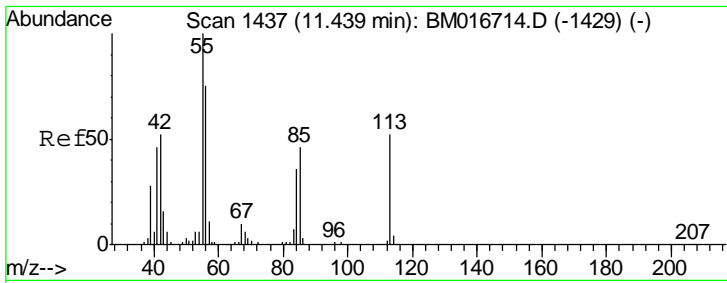
**Manual Integrations**  
**APPROVED**  
 Sohil  
 9/12/2018 2:57:31 PM



#31  
 Hexachlorobutadiene  
 Concen: 3.940 ng/ul  
 RT: 10.86 min Scan# 1338  
 Delta R.T. -0.01 min  
 Lab File: BM016715.D  
 Acq: 11 Sep 2018 10:36

Tgt Ion	Resp	Lower	Upper
225	100		
223	61.8	48.1	72.1
227	58.4	52.1	78.1



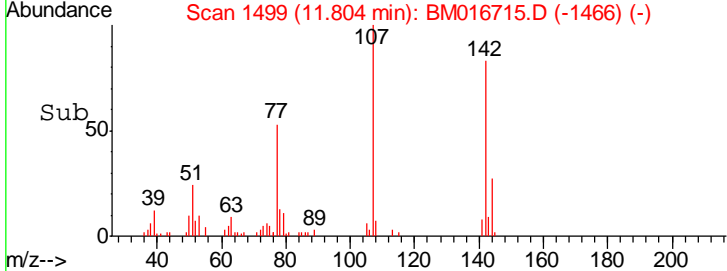
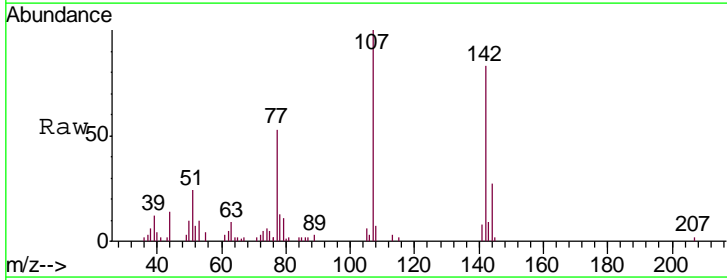
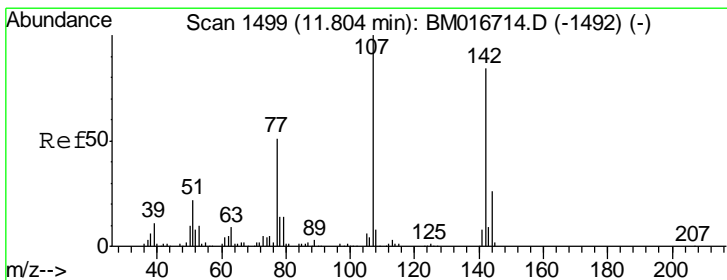
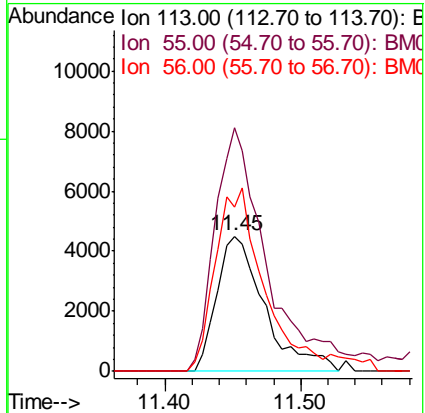


#32  
 Caprolactam  
 Concen: 2.837 ng/ul m  
 RT: 11.45 min Scan# 1439  
 Delta R.T. 0.01 min  
 Lab File: BM016715.D  
 Acq: 11 Sep 2018 10:36

Tgt Ion	Resp	Lower	Upper
113	11008		
55	180.1	131.7	197.5
56	121.5	92.7	139.1

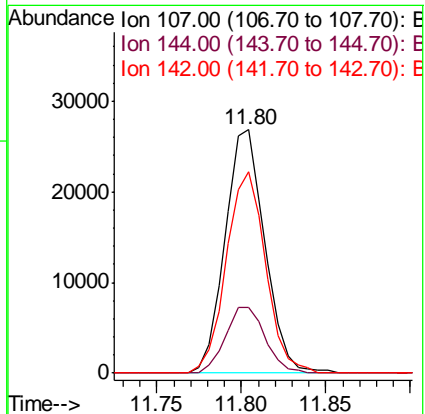
Instrument :  
 BNA\_M  
 Client Sampled :  
 MDL-W-01

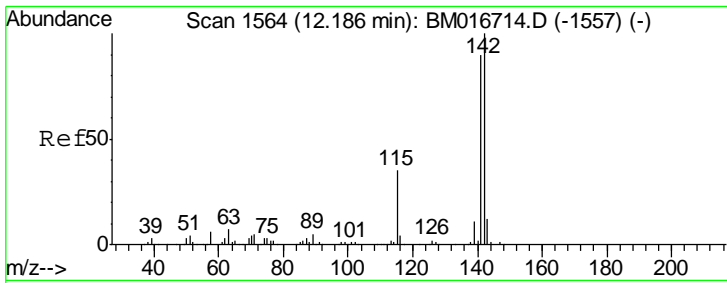
Manual Integrations  
**APPROVED**  
 Sohil  
 9/12/2018 2:57:31 PM



#33  
 4-Chloro-3-methylphenol  
 Concen: 3.421 ng/ul  
 RT: 11.80 min Scan# 1499  
 Delta R.T. -0.01 min  
 Lab File: BM016715.D  
 Acq: 11 Sep 2018 10:36

Tgt Ion	Resp	Lower	Upper
107	43991		
144	27.2	21.1	31.7
142	82.7	60.1	90.1



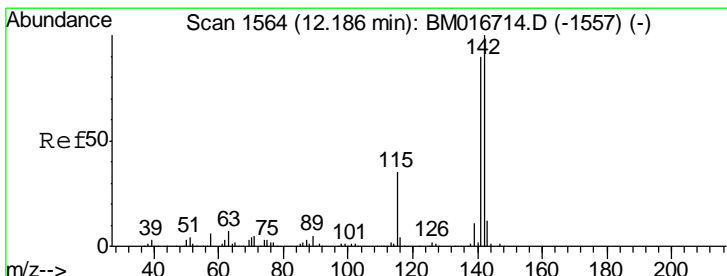
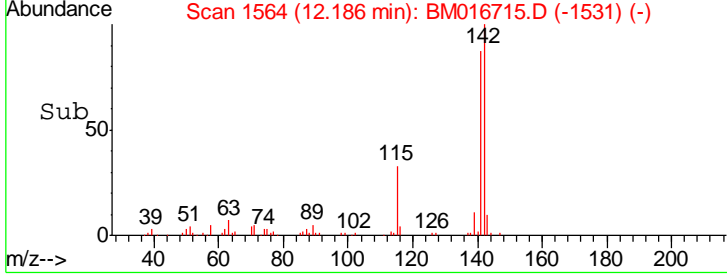
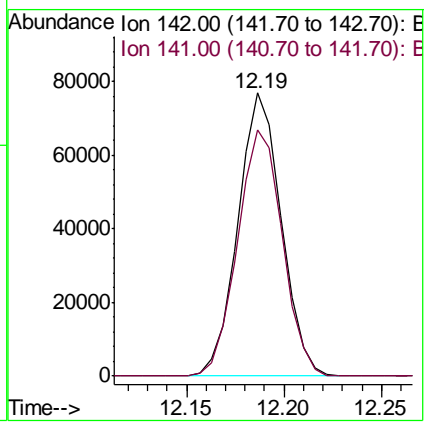
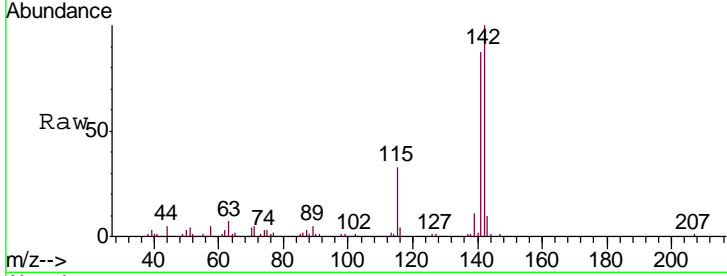


#34  
 2-Methylnaphthalene  
 Concen: 3.875 ng/ul  
 RT: 12.19 min Scan# 1564  
 Delta R.T. -0.01 min  
 Lab File: BM016715.D  
 Acq: 11 Sep 2018 10:36

**Instrument :**  
 BNA\_M  
**ClientSampled :**  
 MDL-W-01

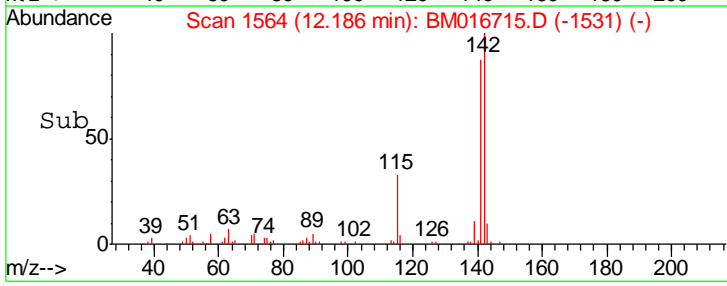
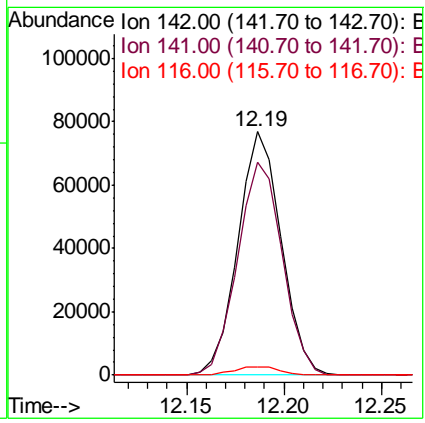
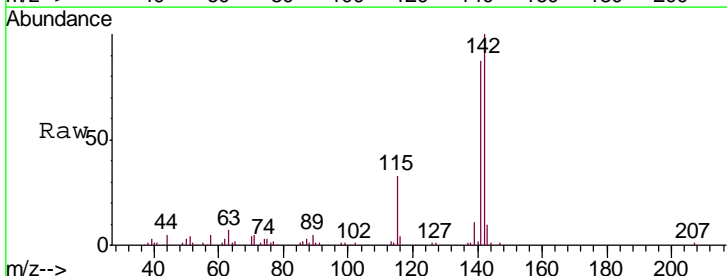
Tgt Ion:142 Resp: 118107  
 Ion Ratio Lower Upper  
 142 100  
 141 87.2 71.4 107.2

**Manual Integrations**  
**APPROVED**  
 Sohil  
 9/12/2018 2:57:31 PM

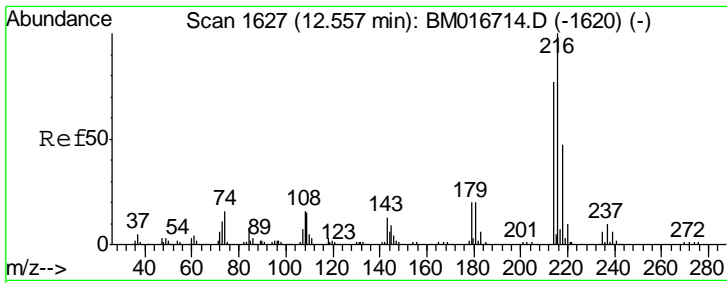


#35  
 1-Methylnaphthalene  
 Concen: 3.875 ng/ul  
 RT: 12.19 min Scan# 1564  
 Delta R.T. -0.01 min  
 Lab File: BM016715.D  
 Acq: 11 Sep 2018 10:36

Tgt Ion:142 Resp: 118107  
 Ion Ratio Lower Upper  
 142 100  
 141 87.2 76.6 115.0  
 116 3.5 3.6 5.4#







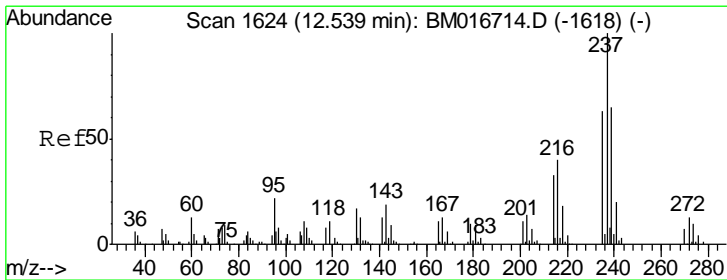
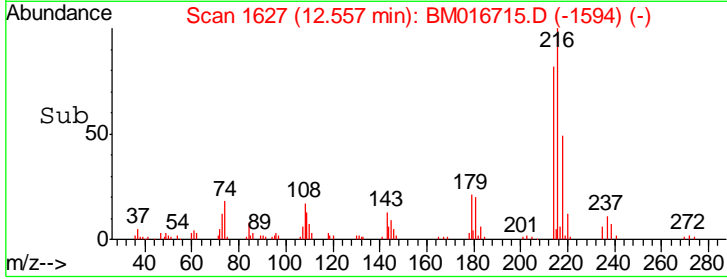
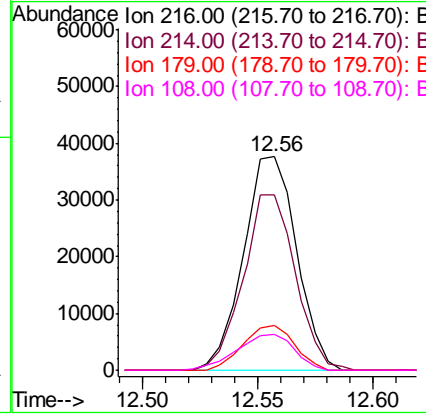
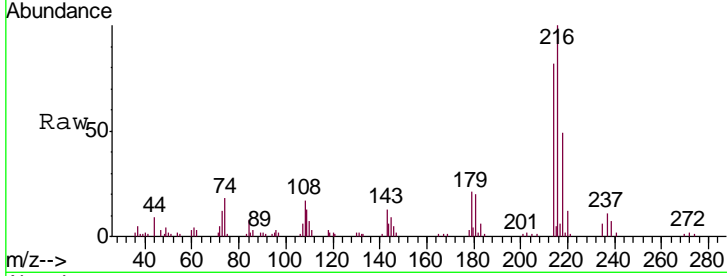
#37  
 1,2,4,5-Tetrachlorobenzene  
 Concen: 3.886 ng/ul  
 RT: 12.56 min Scan# 1627  
 Delta R.T. -0.01 min  
 Lab File: BM016715.D  
 Acq: 11 Sep 2018 10:36

**Instrument :**  
 BNA\_M  
**ClientSampled :**  
 MDL-W-01

Tgt Ion	Resp	Lower	Upper
216	60551		
216	100		
214	81.9	64.1	96.1
179	21.0	14.5	21.7
108	16.6	10.4	15.6

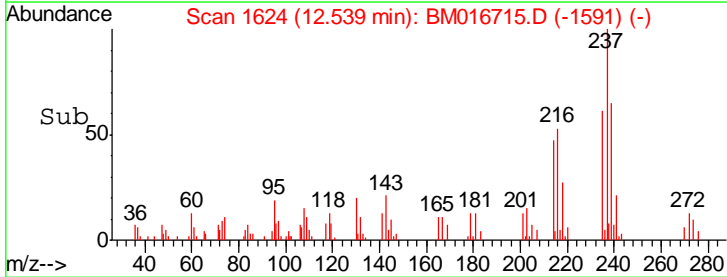
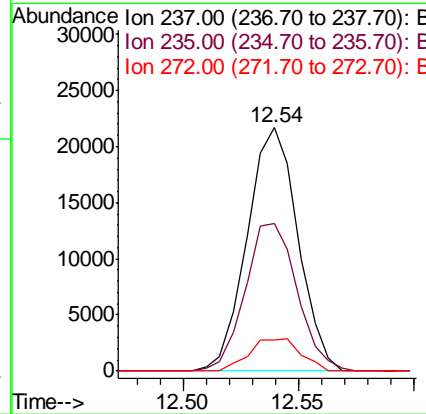
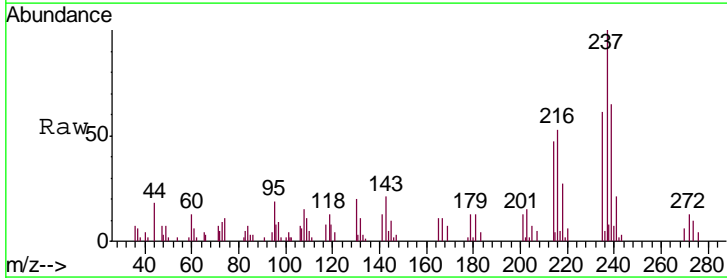
**Manual Integrations**  
**APPROVED**

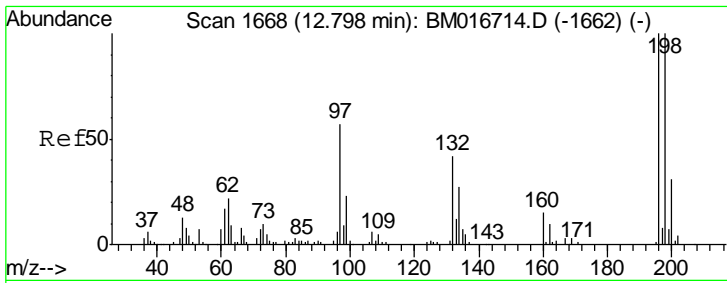
Sohil  
 9/12/2018 2:57:31 PM



#38  
 Hexachlorocyclopentadiene  
 Concen: 3.424 ng/ul  
 RT: 12.54 min Scan# 1624  
 Delta R.T. -0.01 min  
 Lab File: BM016715.D  
 Acq: 11 Sep 2018 10:36

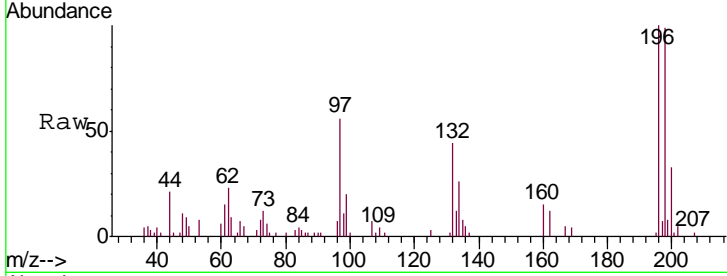
Tgt Ion	Resp	Lower	Upper
237	33218		
237	100		
235	60.5	49.5	74.3
272	12.7	8.6	12.8





#39  
 2,4,6-Trichlorophenol  
 Concen: 3.315 ng/ul  
 RT: 12.80 min Scan# 1668  
 Delta R.T. -0.01 min  
 Lab File: BM016715.D  
 Acq: 11 Sep 2018 10:36

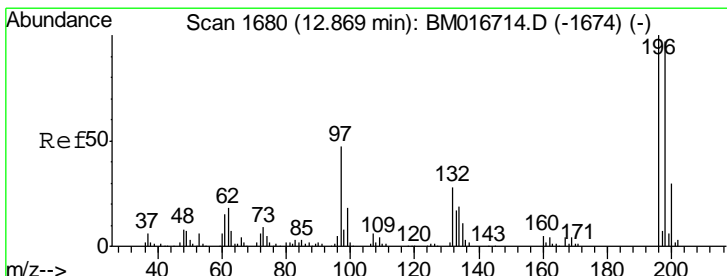
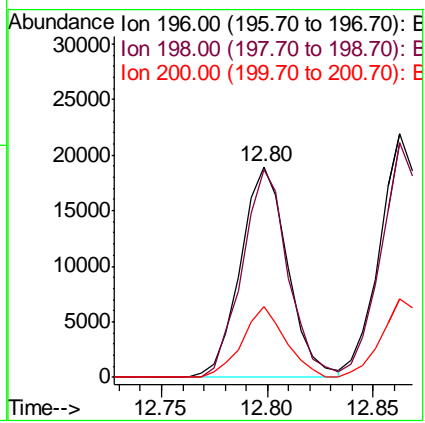
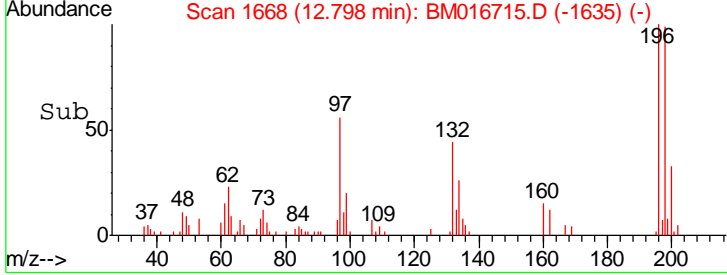
**Instrument :**  
 BNA\_M  
**ClientSampled :**  
 MDL-W-01



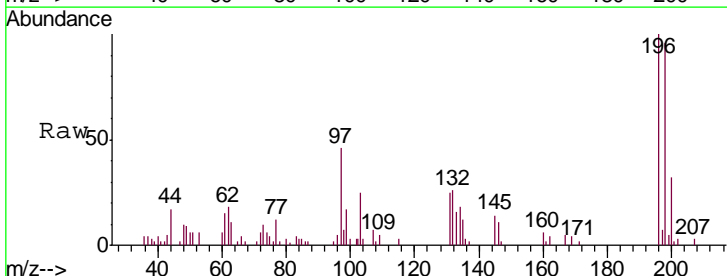
Tgt Ion:196 Resp: 29413

Ion	Ratio	Lower	Upper
196	100		
198	98.5	75.9	113.9
200	33.5	25.8	38.6

**Manual Integrations**  
**APPROVED**  
 Sohil  
 9/12/2018 2:57:31 PM

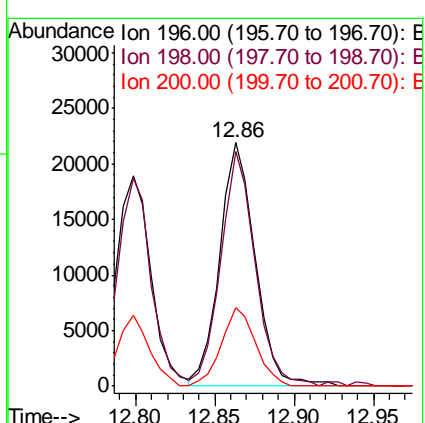
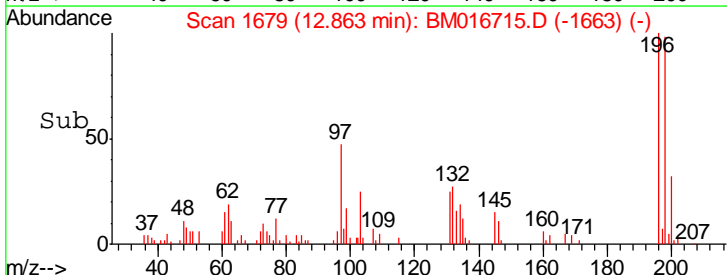


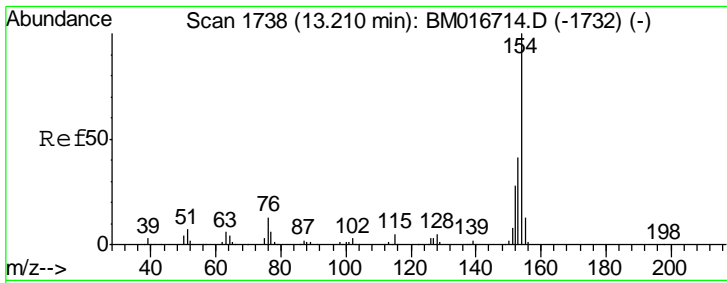
#40  
 2,4,5-Trichlorophenol  
 Concen: 3.518 ng/ul  
 RT: 12.86 min Scan# 1679  
 Delta R.T. -0.01 min  
 Lab File: BM016715.D  
 Acq: 11 Sep 2018 10:36



Tgt Ion:196 Resp: 34060

Ion	Ratio	Lower	Upper
196	100		
198	96.2	74.7	112.1
200	32.0	25.4	38.0





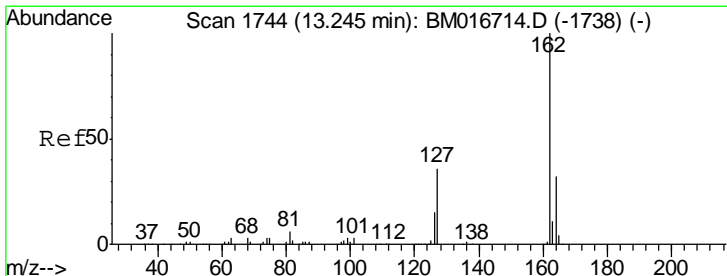
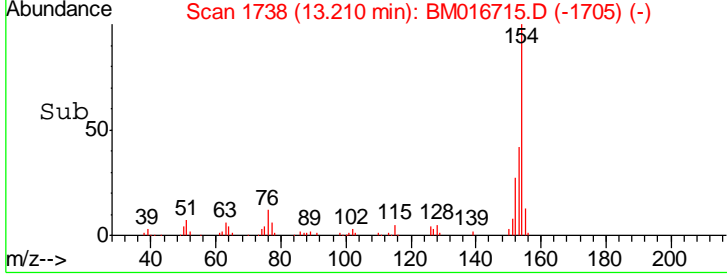
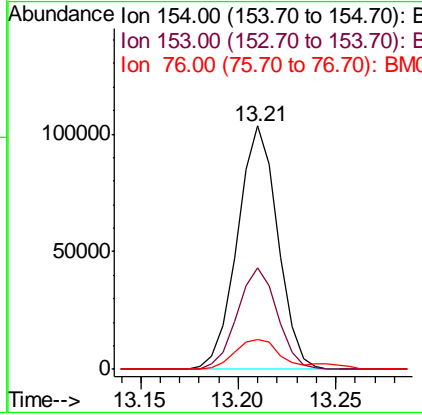
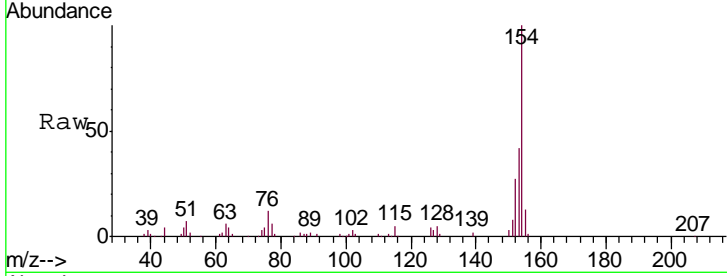
#41  
 1,1'-Biphenyl  
 Concen: 3.922 ng/ul  
 RT: 13.21 min Scan# 1738  
 Delta R.T. -0.01 min  
 Lab File: BM016715.D  
 Acq: 11 Sep 2018 10:36

Instrument :  
 BNA\_M  
 ClientSampled :  
 MDL-W-01

Tgt Ion	Resp	Lower	Upper
154	148025		
153	41.9	34.0	51.0
76	12.3	8.4	12.6

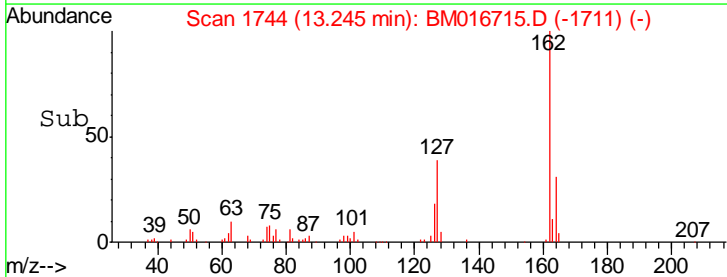
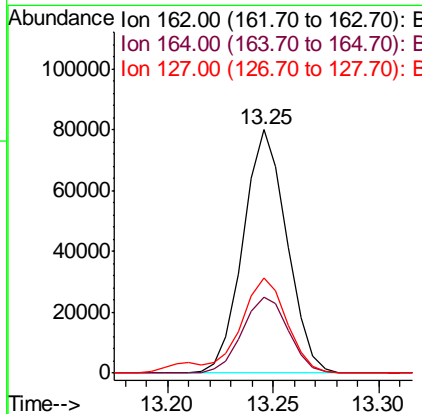
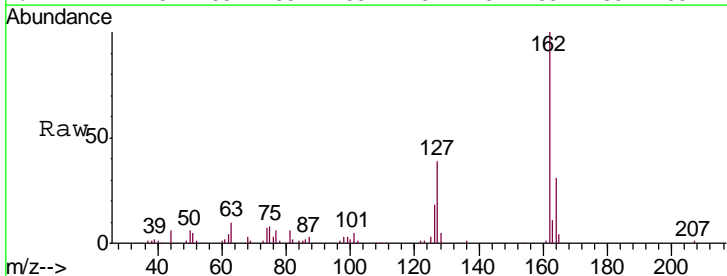
Manual Integrations  
 APPROVED

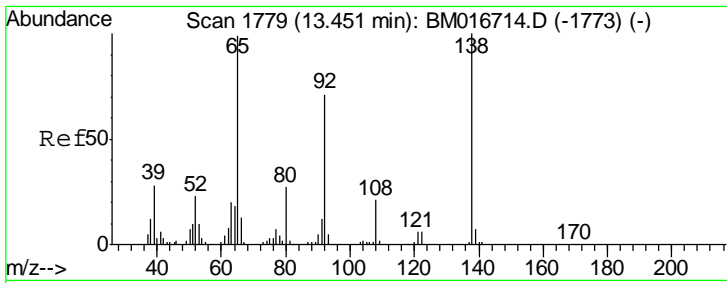
Sohil  
 9/12/2018 2:57:31 PM



#42  
 2-Chloronaphthalene  
 Concen: 3.909 ng/ul  
 RT: 13.25 min Scan# 1744  
 Delta R.T. -0.01 min  
 Lab File: BM016715.D  
 Acq: 11 Sep 2018 10:36

Tgt Ion	Resp	Lower	Upper
162	115440		
164	31.3	26.2	39.4
127	38.9	29.5	44.3





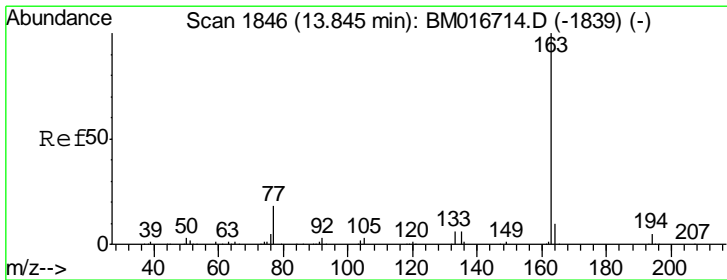
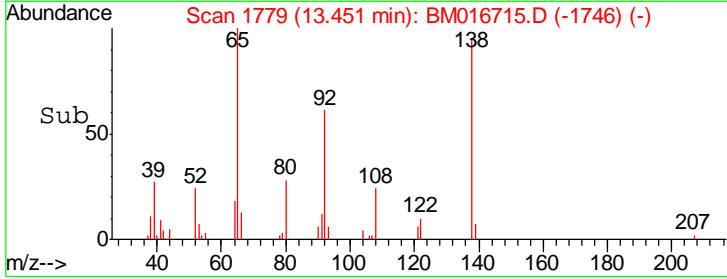
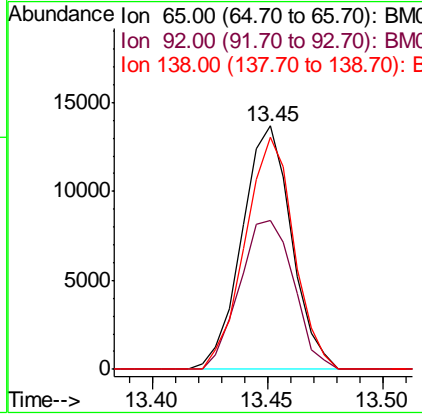
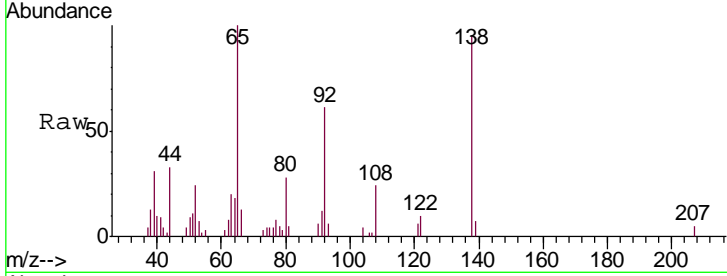
#43  
 2-Nitroaniline  
 Concen: 3.155 ng/ul  
 RT: 13.45 min Scan# 1779  
 Delta R.T. -0.01 min  
 Lab File: BM016715.D  
 Acq: 11 Sep 2018 10:36

Instrument :  
 BNA\_M  
 Client Sampled :  
 MDL-W-01

Tgt Ion	Resp	Lower	Upper
65	100		
92	61.1	57.0	85.4
138	95.1	87.2	130.8

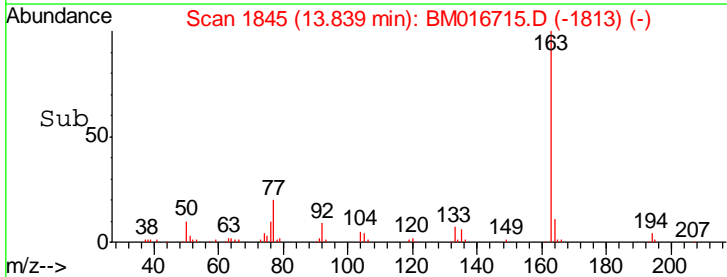
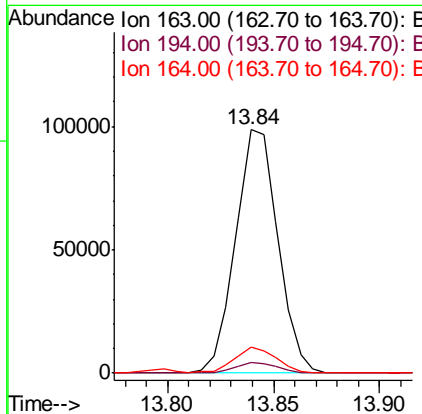
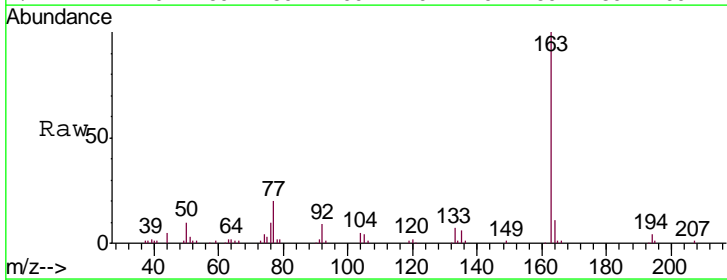
Manual Integrations  
 APPROVED

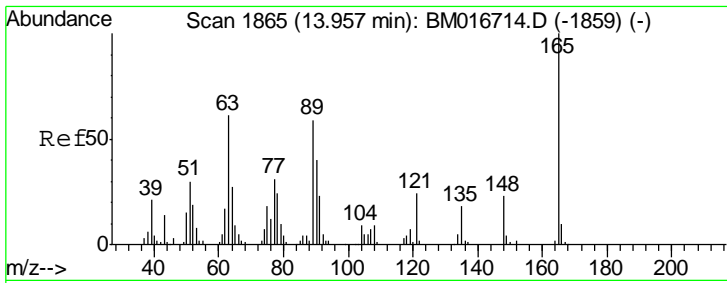
Sohil  
 9/12/2018 2:57:31 PM



#45  
 Dimethylphthalate  
 Concen: 3.867 ng/ul  
 RT: 13.84 min Scan# 1845  
 Delta R.T. -0.01 min  
 Lab File: BM016715.D  
 Acq: 11 Sep 2018 10:36

Tgt Ion	Resp	Lower	Upper
163	100		
194	4.2	4.0	6.0
164	10.8	8.4	12.6





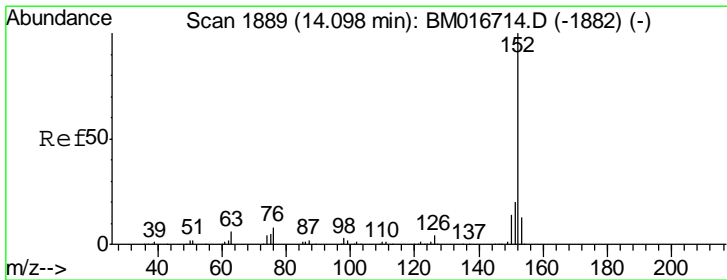
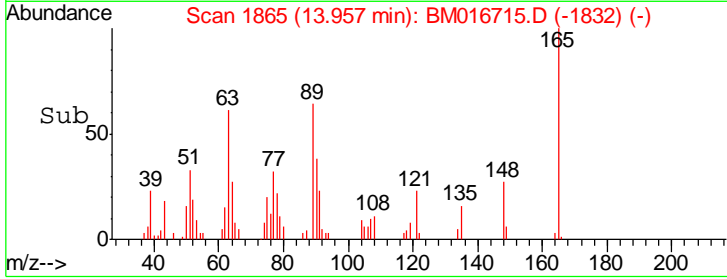
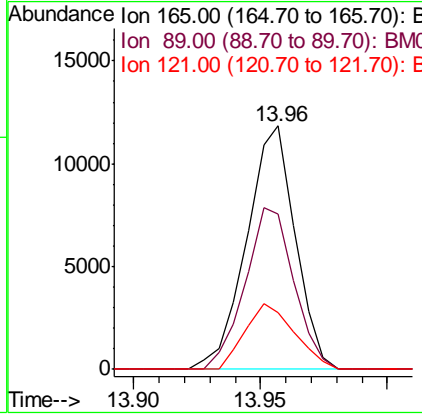
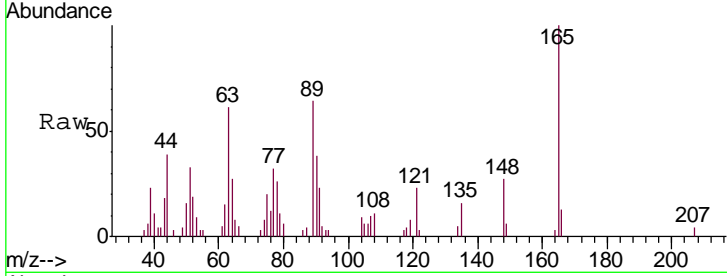
#46  
 2,6-Dinitrotoluene  
 Concen: 2.879 ng/ul  
 RT: 13.96 min Scan# 1865  
 Delta R.T. -0.01 min  
 Lab File: BM016715.D  
 Acq: 11 Sep 2018 10:36

**Instrument :**  
 BNA\_M  
**ClientSampled :**  
 MDL-W-01

Tgt Ion	Resp	Lower	Upper
165	15742		
89	64.0	43.8	65.8
121	23.5	17.8	26.6

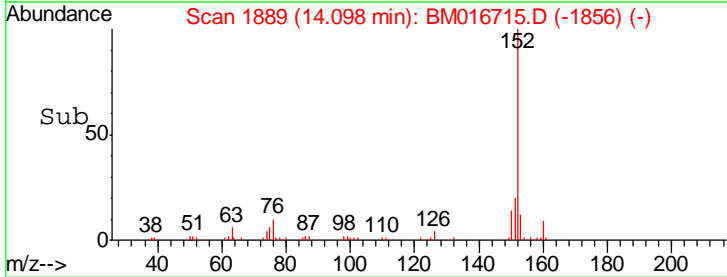
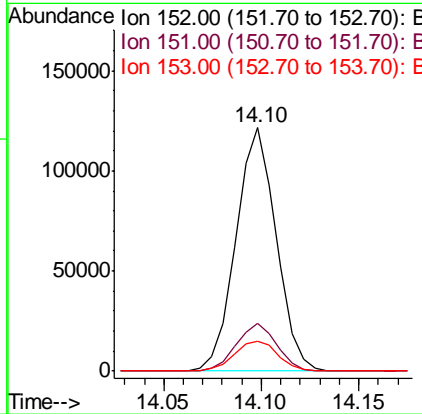
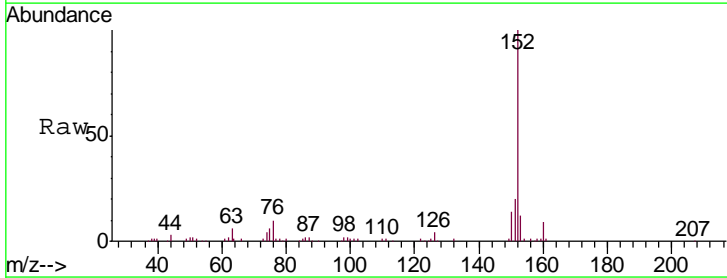
**Manual Integrations**  
**APPROVED**

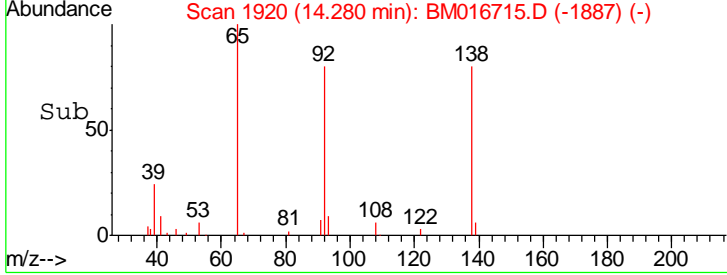
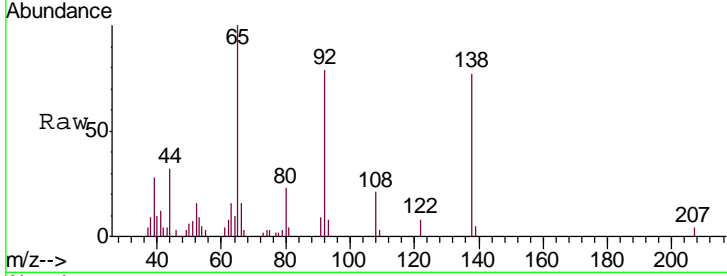
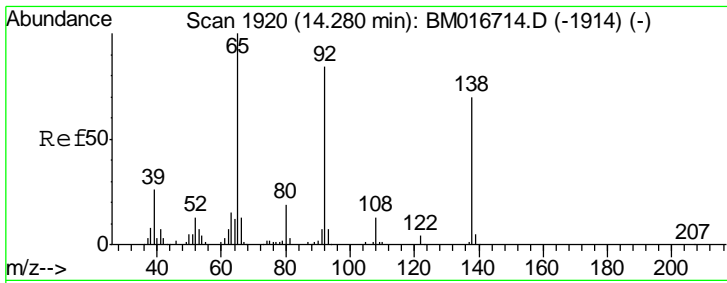
Sohil  
 9/12/2018 2:57:31 PM



#48  
 Acenaphthylene  
 Concen: 3.888 ng/ul  
 RT: 14.10 min Scan# 1889  
 Delta R.T. -0.01 min  
 Lab File: BM016715.D  
 Acq: 11 Sep 2018 10:36

Tgt Ion	Resp	Lower	Upper
152	173137		
151	19.8	16.1	24.1
153	12.2	10.8	16.2



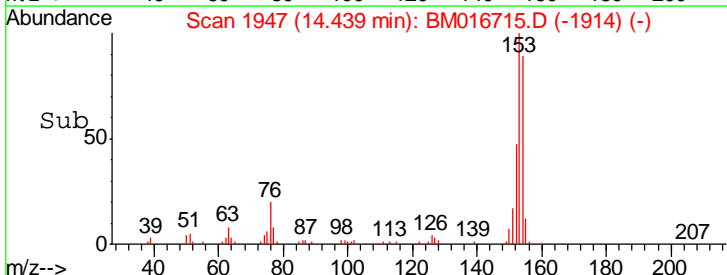
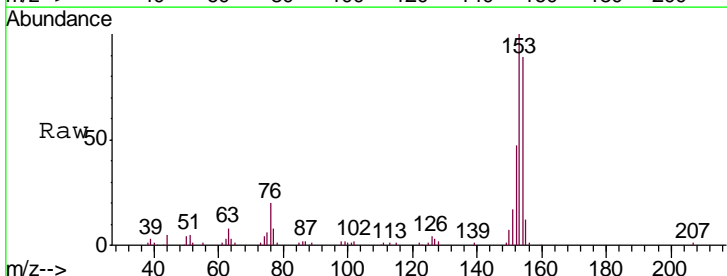
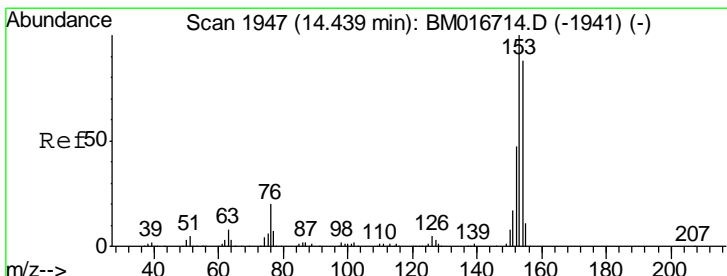
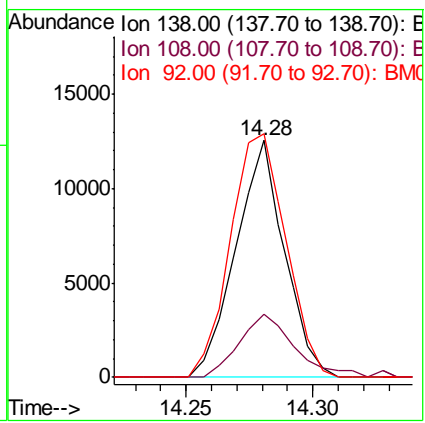


#49  
 3-Nitroaniline  
 Concen: 2.831 ng/ul  
 RT: 14.28 min Scan# 1920  
 Delta R.T. -0.01 min  
 Lab File: BM016715.D  
 Acq: 11 Sep 2018 10:36

Tgt Ion	Resp	Lower	Upper
138	16830		
108	26.8	7.6	11.4#
92	102.7	94.2	141.2

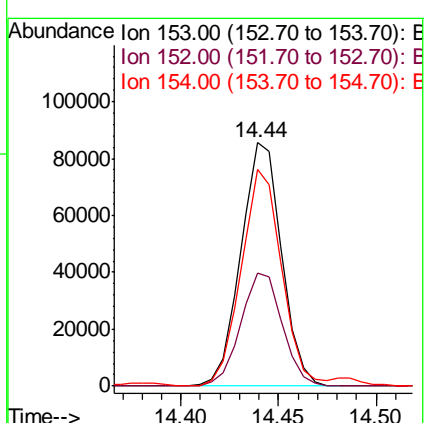
**Instrument :**  
 BNA\_M  
**ClientSampled :**  
 MDL-W-01

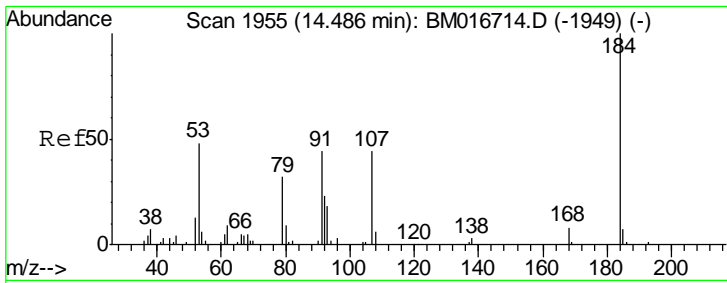
**Manual Integrations**  
**APPROVED**  
 Sohil  
 9/12/2018 2:57:31 PM



#50  
 Acenaphthene  
 Concen: 3.915 ng/ul  
 RT: 14.44 min Scan# 1947  
 Delta R.T. -0.01 min  
 Lab File: BM016715.D  
 Acq: 11 Sep 2018 10:36

Tgt Ion	Resp	Lower	Upper
153	123766		
152	46.6	37.9	56.9
154	89.0	69.8	104.6





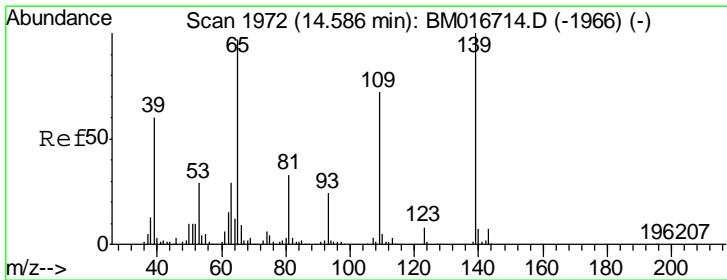
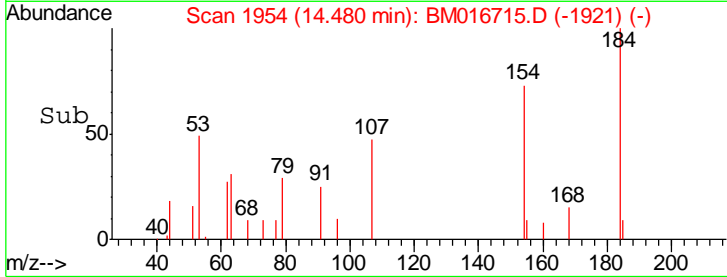
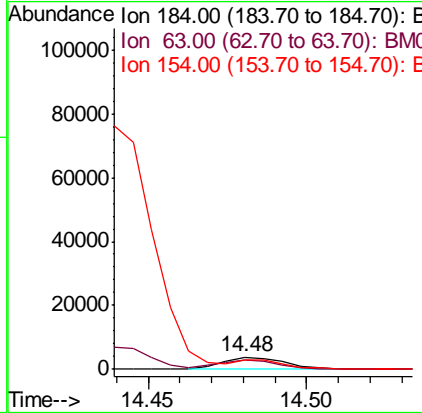
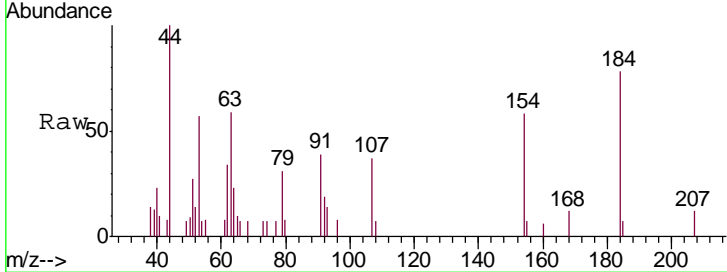
#51  
 2,4-Dinitrophenol  
 Concen: 2.129 ng/ul  
 RT: 14.48 min Scan# 1954  
 Delta R.T. -0.01 min  
 Lab File: BM016715.D  
 Acq: 11 Sep 2018 10:36

Instrument :  
 BNA\_M  
 ClientSampled :  
 MDL-W-01

Tgt Ion	Resp	Lower	Upper
184	100		
63	75.0	39.7	59.5#
154	73.5	45.0	67.6#

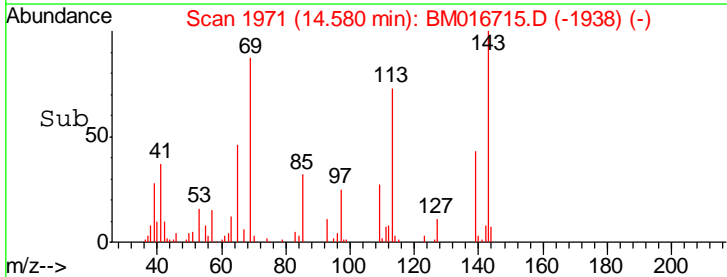
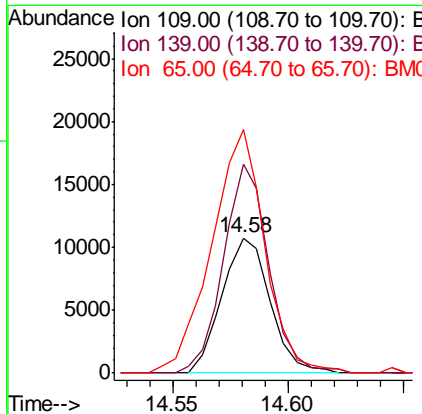
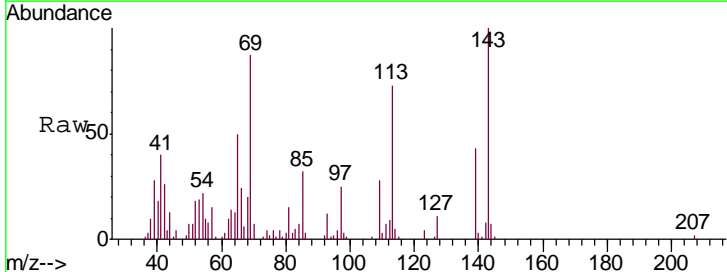
Manual Integrations  
 APPROVED

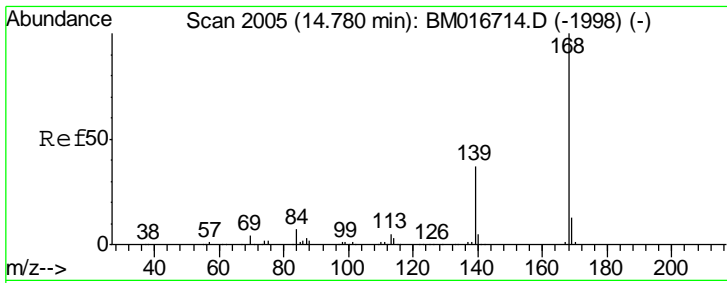
Sohil  
 9/12/2018 2:57:31 PM



#53  
 4-Nitrophenol  
 Concen: 3.394 ng/ul  
 RT: 14.58 min Scan# 1971  
 Delta R.T. -0.01 min  
 Lab File: BM016715.D  
 Acq: 11 Sep 2018 10:36

Tgt Ion	Resp	Lower	Upper
109	100		
139	154.7	91.2	136.8#
65	180.6	92.6	139.0#



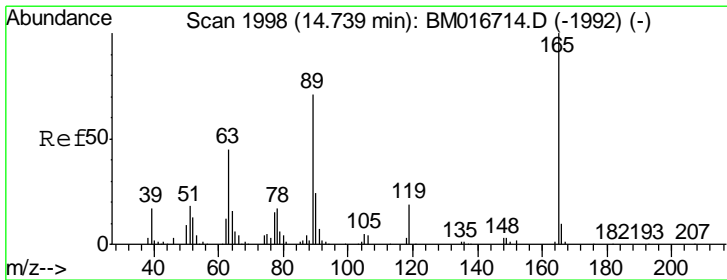
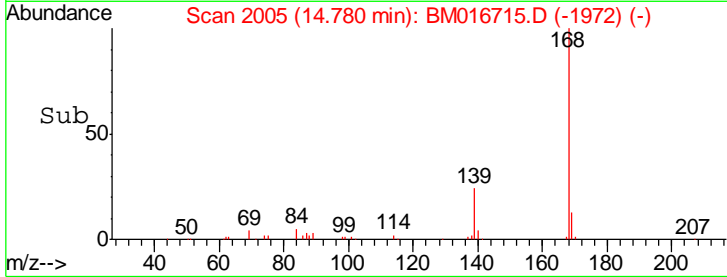
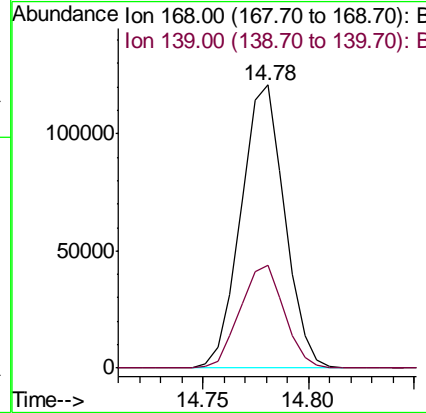
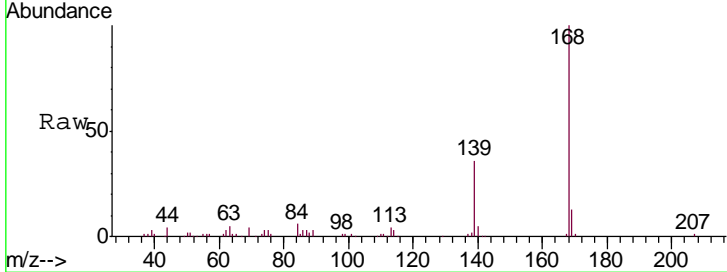


#54  
 Dibenzofuran  
 Concen: 4.001 ng/ul  
 RT: 14.78 min Scan# 2005  
 Delta R.T. -0.01 min  
 Lab File: BM016715.D  
 Acq: 11 Sep 2018 10:36

Instrument :  
 BNA\_M  
 ClientSampled :  
 MDL-W-01

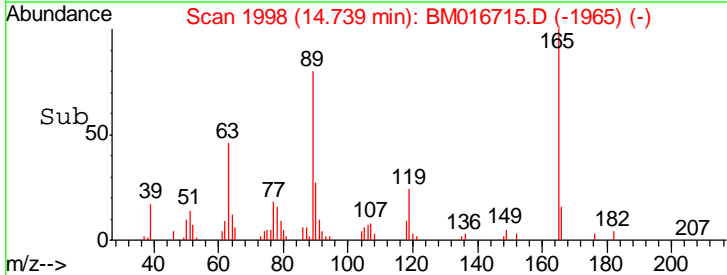
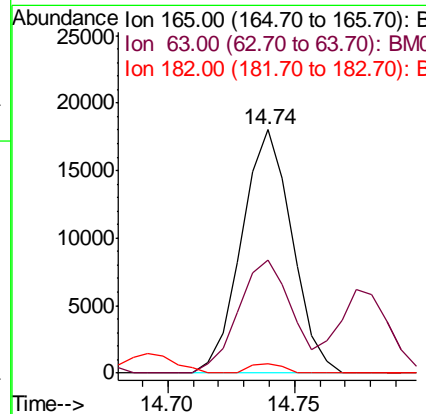
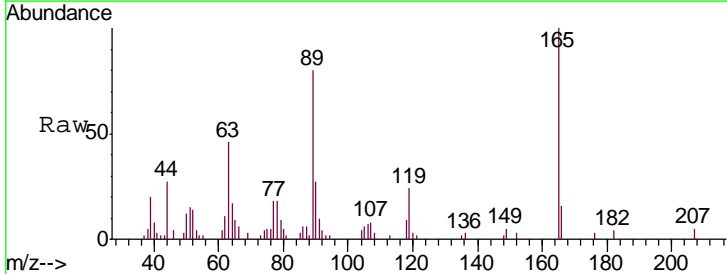
Tgt Ion	Resp	Lower	Upper
168	173538		
139	36.4	31.0	46.4

Manual Integrations  
 APPROVED  
 Sohil  
 9/12/2018 2:57:31 PM

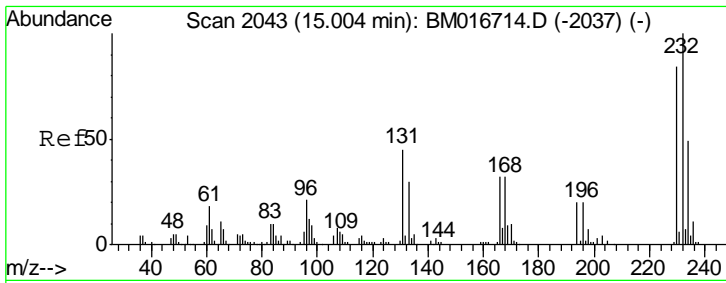


#55  
 2,4-Dinitrotoluene  
 Concen: 3.107 ng/ul  
 RT: 14.74 min Scan# 1998  
 Delta R.T. -0.01 min  
 Lab File: BM016715.D  
 Acq: 11 Sep 2018 10:36

Tgt Ion	Resp	Lower	Upper
165	24979		
63	46.4	31.4	47.0
182	3.7	2.7	4.1

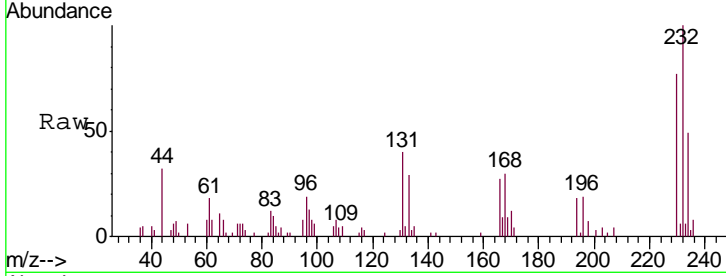






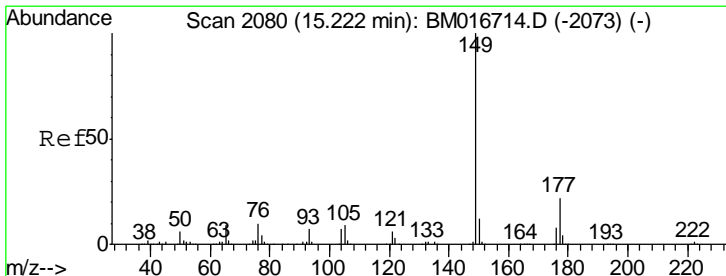
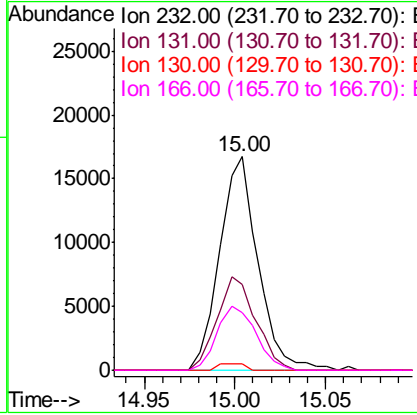
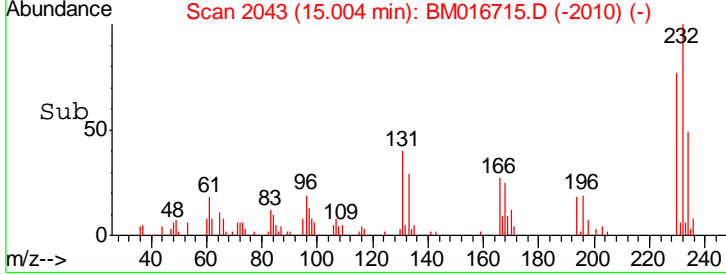
#56  
 2,3,4,6-Tetrachlorophenol  
 Concen: 3.150 ng/ul  
 RT: 15.00 min Scan# 2043  
 Delta R.T. -0.01 min  
 Lab File: BM016715.D  
 Acq: 11 Sep 2018 10:36

Instrument :  
 BNA\_M  
 ClientSampled :  
 MDL-W-01

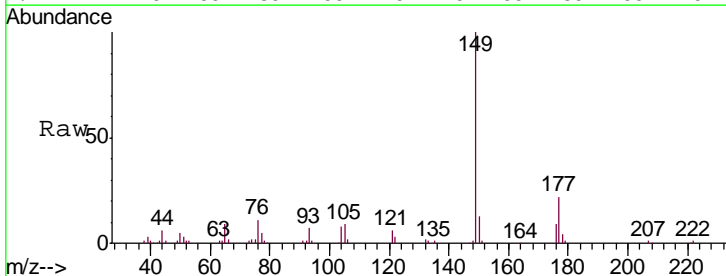


Tgt Ion	Resp	Lower	Upper
232	100		
131	39.9	27.1	40.7
130	2.8	0.0	0.0
166	26.8	20.0	30.0

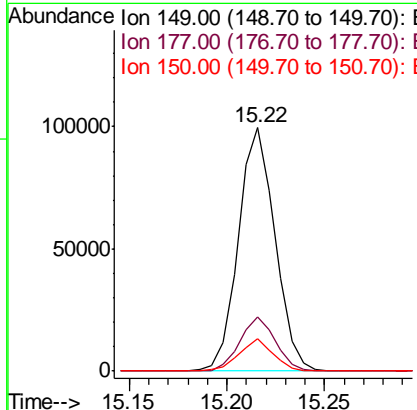
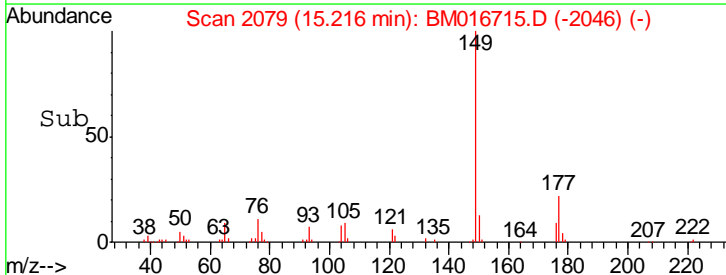
Manual Integrations  
 APPROVED  
 Sohil  
 9/12/2018 2:57:31 PM

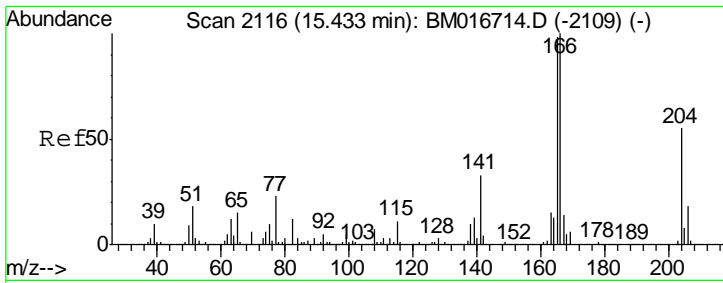


#57  
 Diethylphthalate  
 Concen: 3.659 ng/ul  
 RT: 15.22 min Scan# 2079  
 Delta R.T. -0.01 min  
 Lab File: BM016715.D  
 Acq: 11 Sep 2018 10:36



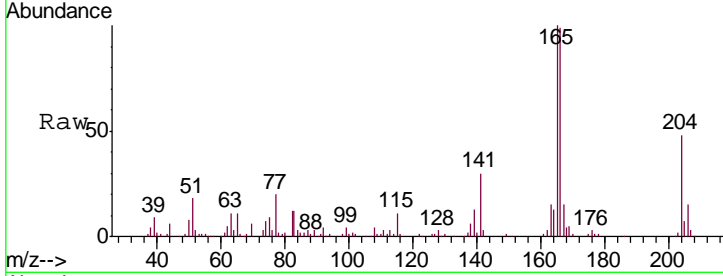
Tgt Ion	Resp	Lower	Upper
149	100		
177	22.1	19.3	28.9
150	13.2	10.6	15.8





#59  
 Fluorene  
 Concen: 3.854 ng/ul  
 RT: 15.43 min Scan# 2115  
 Delta R.T. -0.01 min  
 Lab File: BM016715.D  
 Acq: 11 Sep 2018 10:36

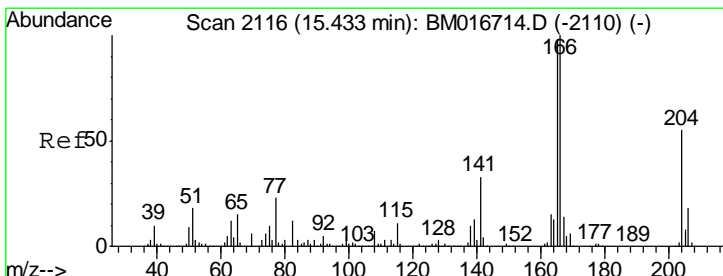
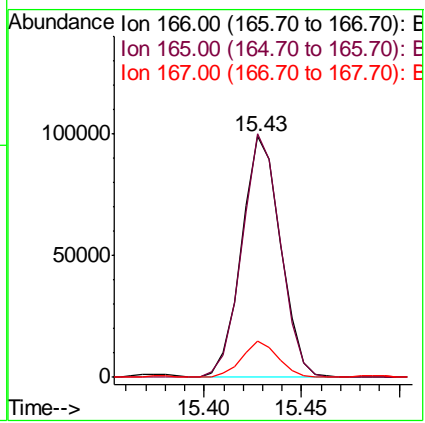
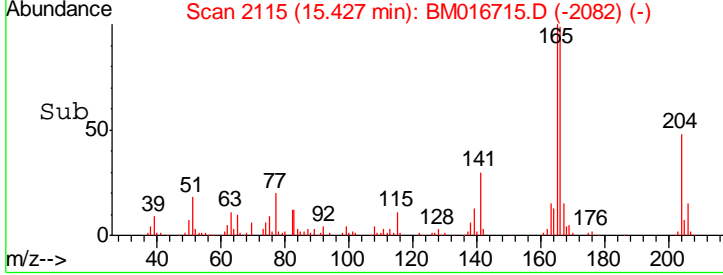
**Instrument :**  
 BNA\_M  
**ClientSampled :**  
 MDL-W-01



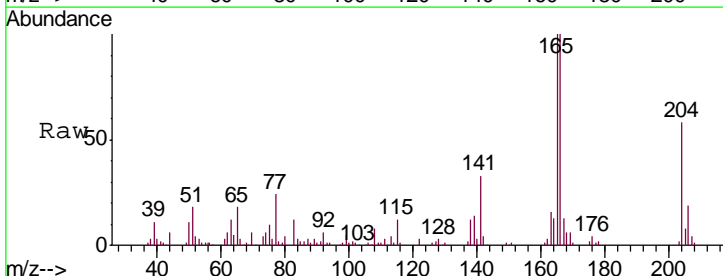
Tgt Ion:166 Resp: 137343

Ion	Ratio	Lower	Upper
166	100		
165	101.1	78.4	117.6
167	14.8	11.1	16.7

**Manual Integrations**  
**APPROVED**  
 Sohil  
 9/12/2018 2:57:31 PM

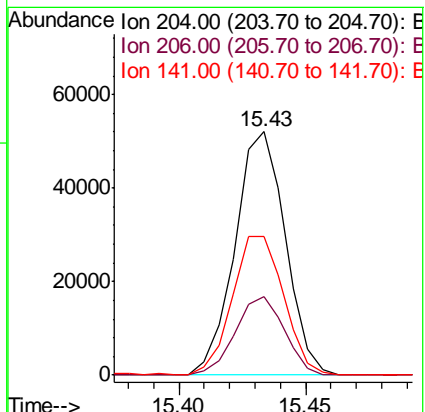
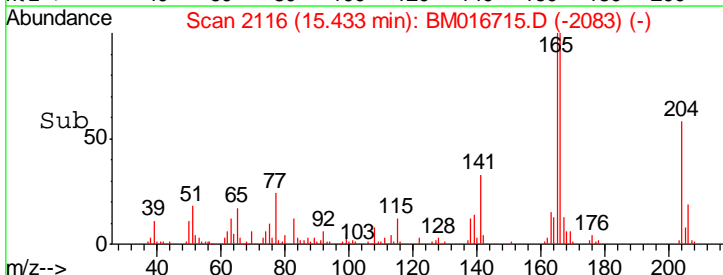


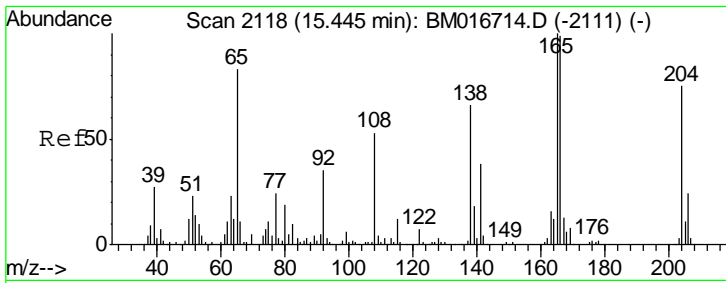
#60  
 4-Chlorophenyl-phenylether  
 Concen: 3.977 ng/ul  
 RT: 15.43 min Scan# 2116  
 Delta R.T. -0.01 min  
 Lab File: BM016715.D  
 Acq: 11 Sep 2018 10:36



Tgt Ion:204 Resp: 71868

Ion	Ratio	Lower	Upper
204	100		
206	32.5	26.6	40.0
141	57.2	40.7	61.1





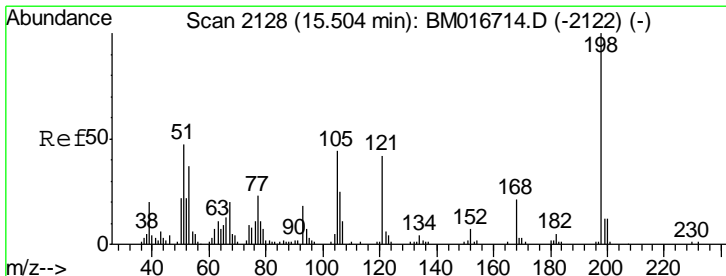
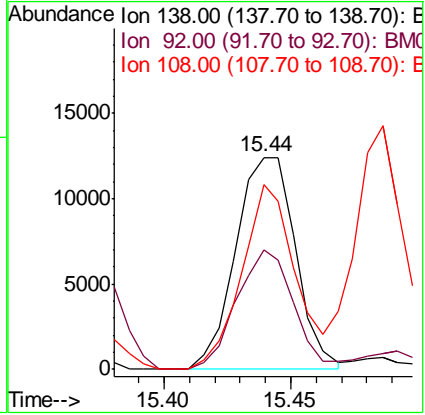
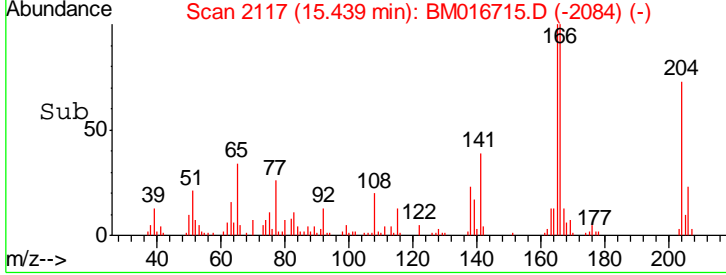
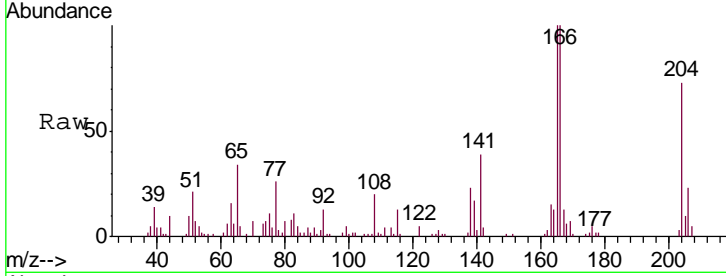
#61  
 4-Nitroaniline  
 Concen: 2.802 ng/ul  
 RT: 15.44 min Scan# 2117  
 Delta R.T. -0.01 min  
 Lab File: BM016715.D  
 Acq: 11 Sep 2018 10:36

Instrument :  
 BNA\_M  
 Client Sampled :  
 MDL-W-01

Tgt Ion	Resp	Lower	Upper
138	100		
92	56.4	38.2	57.4
108	86.9	70.0	105.0

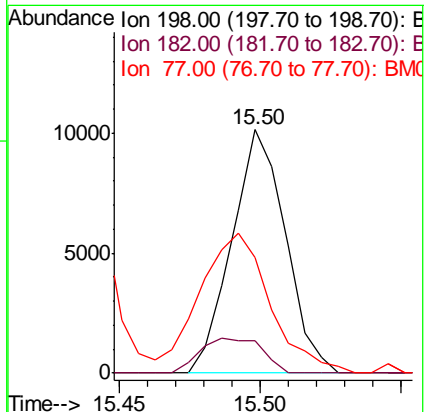
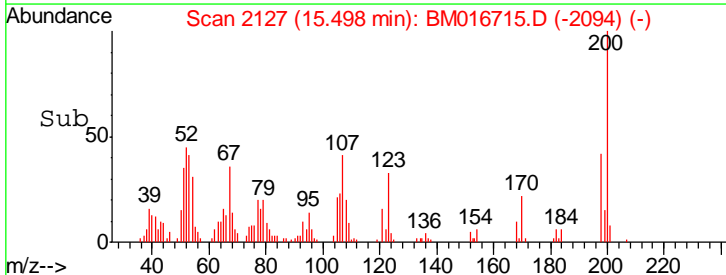
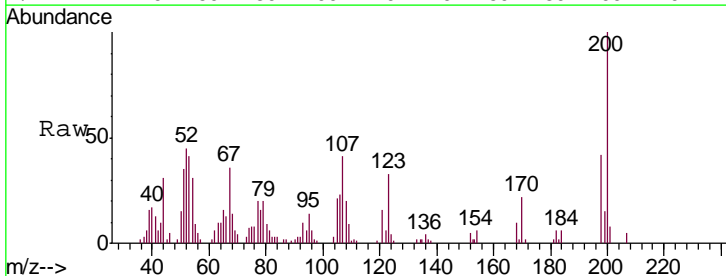
Manual Integrations  
 APPROVED

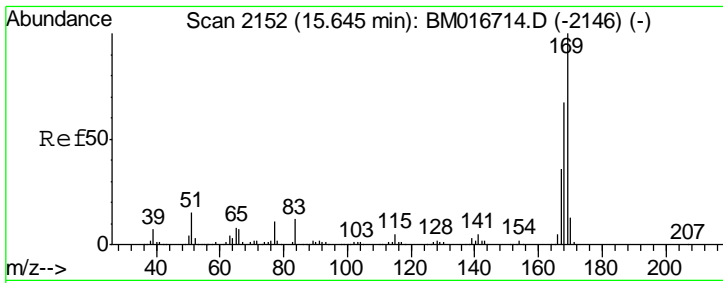
Sohil  
 9/12/2018 2:57:31 PM



#64  
 4,6-Dinitro-2-methylphenol  
 Concen: 2.995 ng/ul  
 RT: 15.50 min Scan# 2127  
 Delta R.T. -0.01 min  
 Lab File: BM016715.D  
 Acq: 11 Sep 2018 10:36

Tgt Ion	Resp	Lower	Upper
198	100		
182	13.4	3.5	5.3#
77	47.3	18.2	27.4#





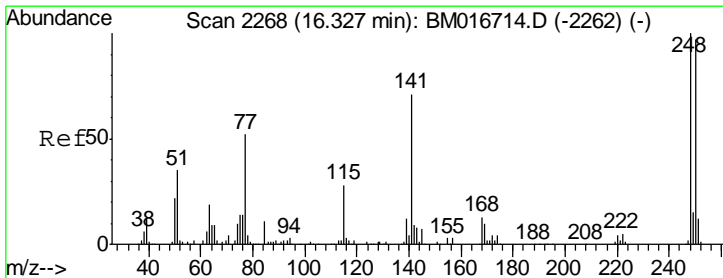
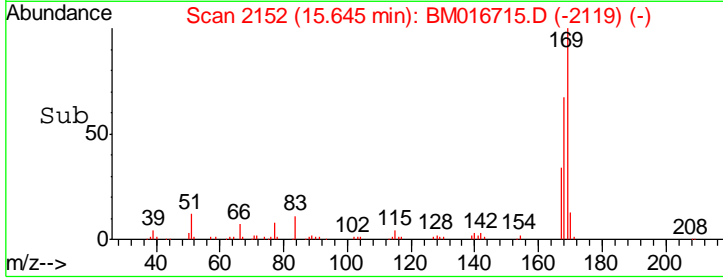
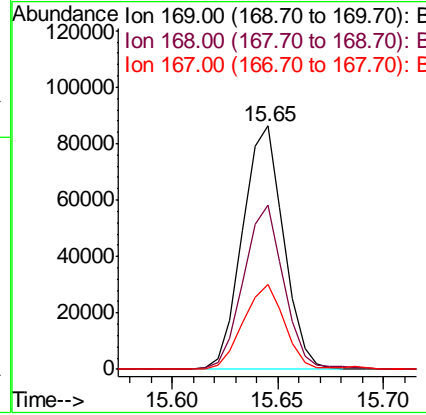
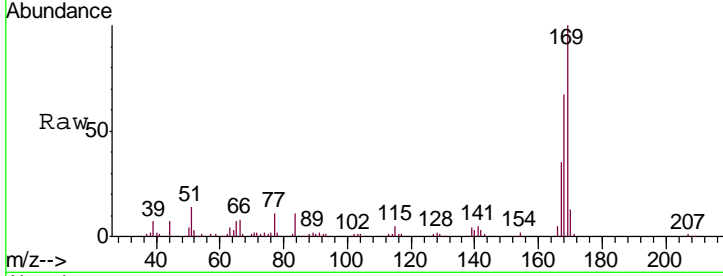
#65  
 N-Nitrosodiphenylamine  
 Concen: 3.868 ng/ul  
 RT: 15.65 min Scan# 2152  
 Delta R.T. -0.01 min  
 Lab File: BM016715.D  
 Acq: 11 Sep 2018 10:36

Instrument :  
 BNA\_M  
 ClientSampled :  
 MDL-W-01

Tgt Ion	Resp	Lower	Upper
169	116217		
168	67.3	53.8	80.8
167	35.1	29.5	44.3

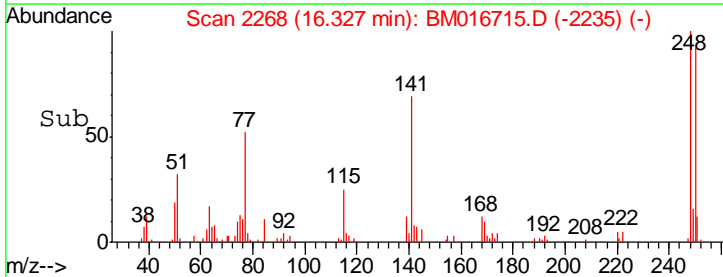
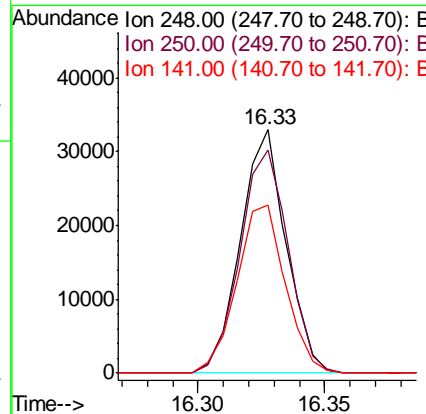
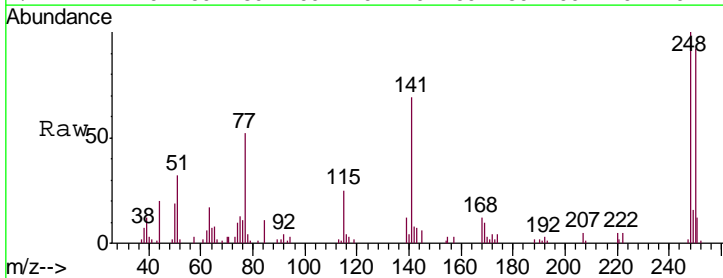
Manual Integrations  
 APPROVED

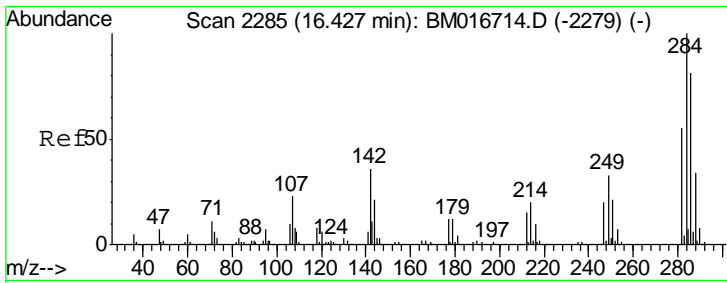
Sohil  
 9/12/2018 2:57:31 PM



#66  
 4-Bromophenyl-phenylether  
 Concen: 3.757 ng/ul  
 RT: 16.33 min Scan# 2268  
 Delta R.T. -0.01 min  
 Lab File: BM016715.D  
 Acq: 11 Sep 2018 10:36

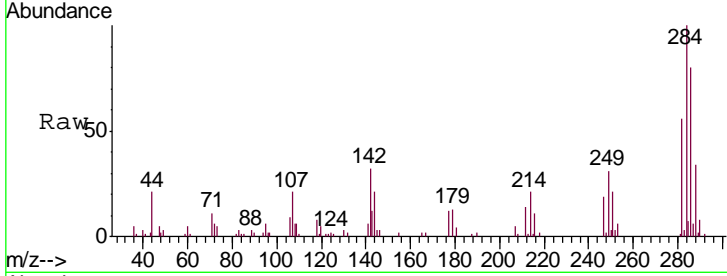
Tgt Ion	Resp	Lower	Upper
248	41292		
250	91.7	79.0	118.4
141	68.9	51.9	77.9





#67  
 Hexachlorobenzene  
 Concen: 3.924 ng/ul  
 RT: 16.43 min Scan# 2285  
 Delta R.T. -0.01 min  
 Lab File: BM016715.D  
 Acq: 11 Sep 2018 10:36

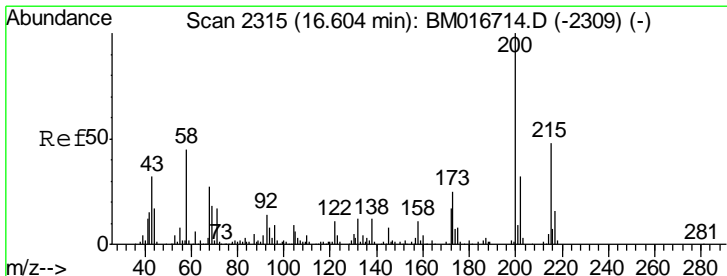
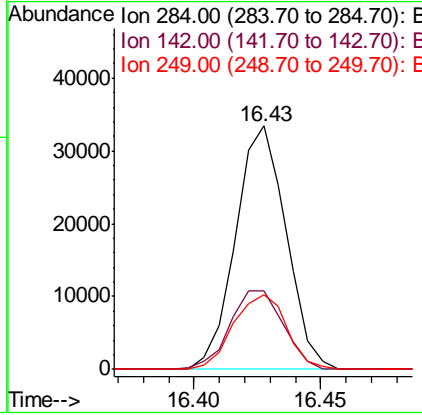
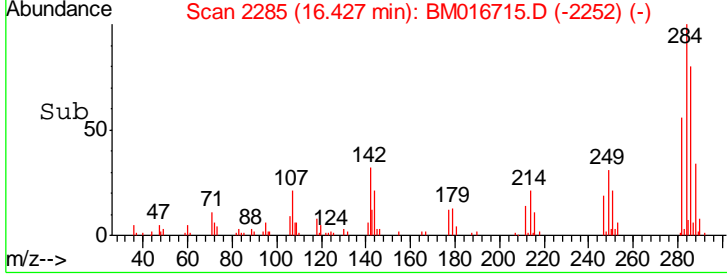
**Instrument :**  
 BNA\_M  
**ClientSampled :**  
 MDL-W-01



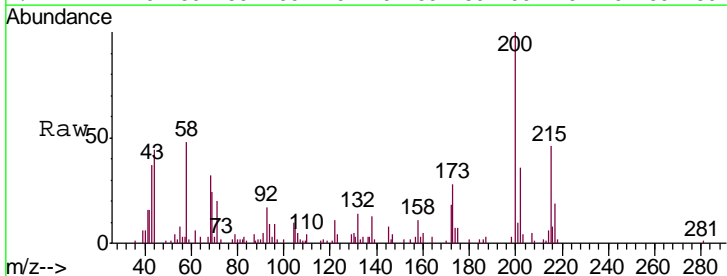
Tgt Ion: 284 Resp: 46412

Ion	Ratio	Lower	Upper
284	100		
142	32.4	21.3	31.9#
249	30.8	26.3	39.5

**Manual Integrations**  
**APPROVED**  
 Sohil  
 9/12/2018 2:57:31 PM

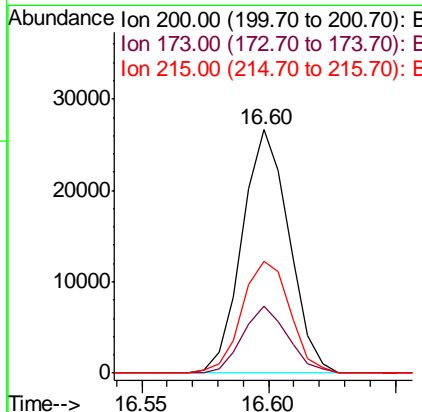
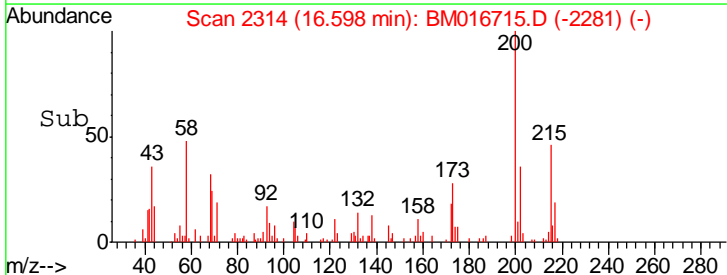


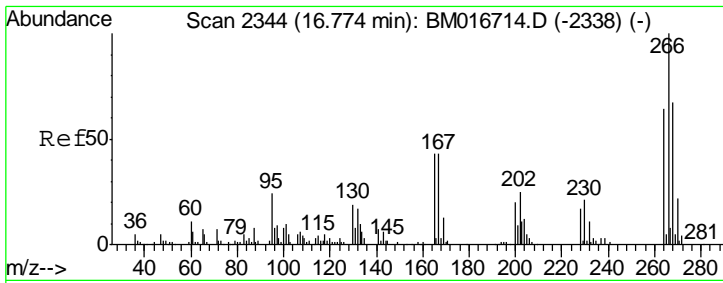
#68  
 Atrazine  
 Concen: 3.248 ng/ul  
 RT: 16.60 min Scan# 2314  
 Delta R.T. -0.01 min  
 Lab File: BM016715.D  
 Acq: 11 Sep 2018 10:36



Tgt Ion: 200 Resp: 34490

Ion	Ratio	Lower	Upper
200	100		
173	27.5	20.6	31.0
215	45.7	39.8	59.6





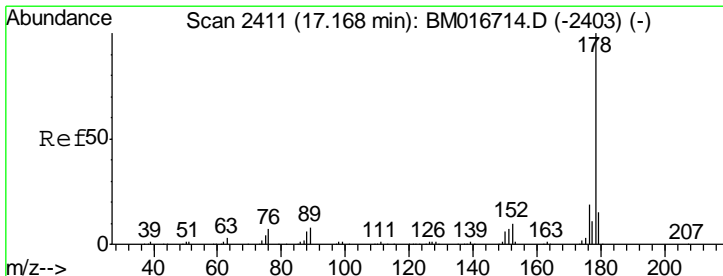
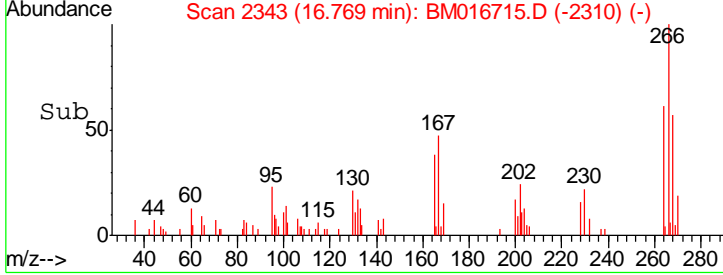
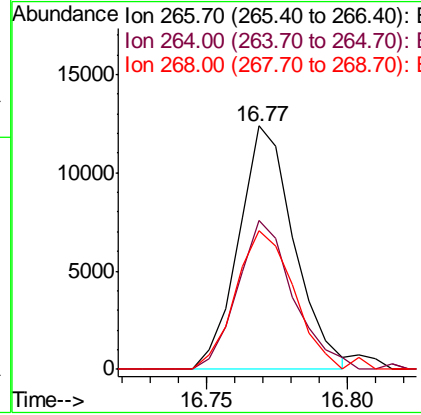
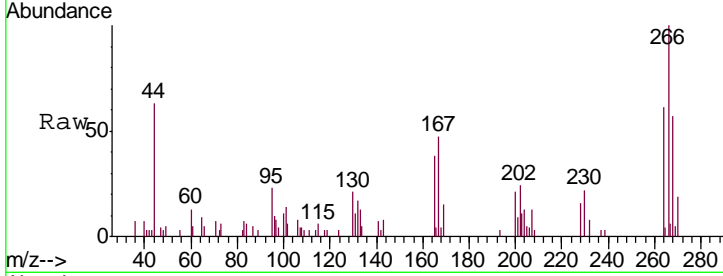
#69  
 Pentachlorophenol  
 Concen: 2.633 ng/ul  
 RT: 16.77 min Scan# 2343  
 Delta R.T. -0.01 min  
 Lab File: BM016715.D  
 Acq: 11 Sep 2018 10:36

**Instrument :**  
 BNA\_M  
**ClientSampled :**  
 MDL-W-01

Tgt Ion	Resp	Lower	Upper
266	16842		
264	65.7	48.2	72.4
268	56.9	52.3	78.5

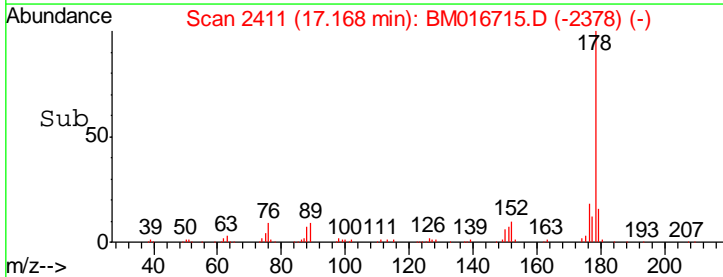
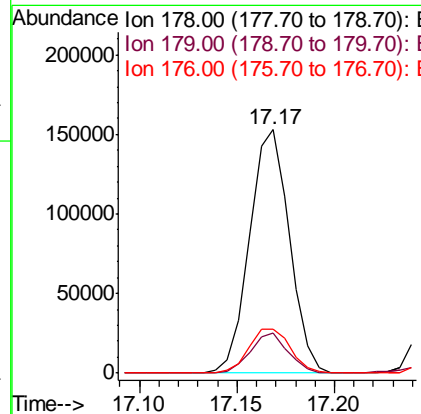
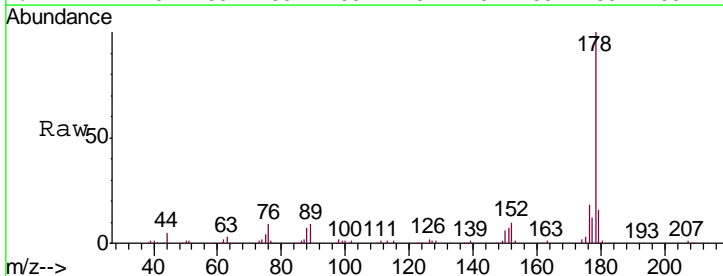
**Manual Integrations**  
**APPROVED**

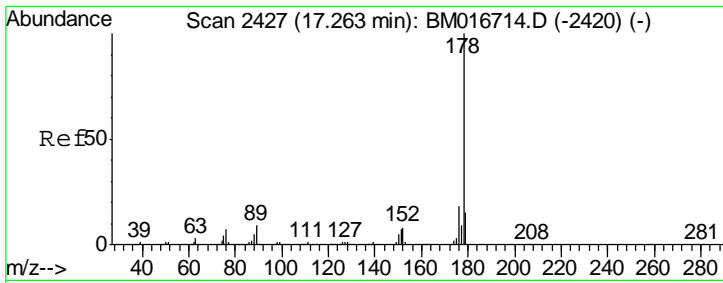
Sohil  
 9/12/2018 2:57:31 PM



#70  
 Phenanthrene  
 Concen: 4.016 ng/ul  
 RT: 17.17 min Scan# 2411  
 Delta R.T. -0.01 min  
 Lab File: BM016715.D  
 Acq: 11 Sep 2018 10:36

Tgt Ion	Resp	Lower	Upper
178	216684		
179	16.3	12.3	18.5
176	17.9	15.4	23.0





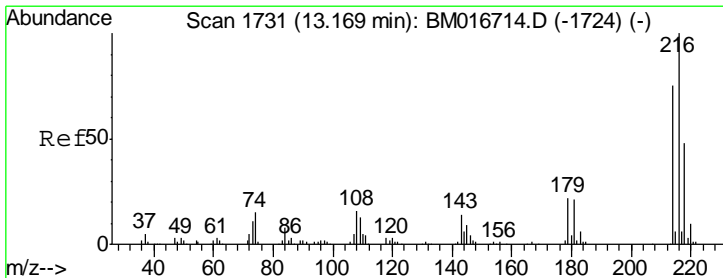
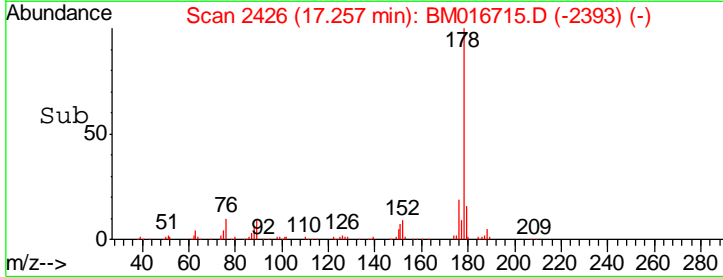
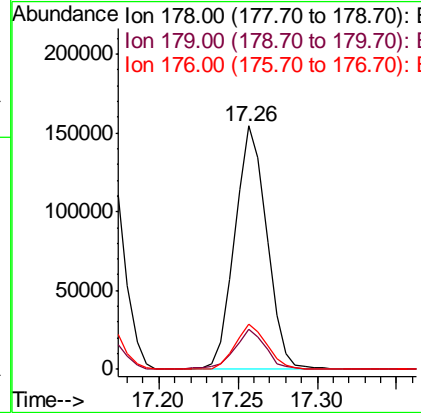
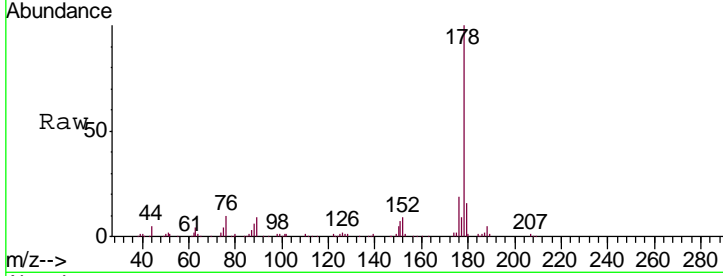
#72  
 Anthracene  
 Concen: 3.923 ng/ul  
 RT: 17.26 min Scan# 2426  
 Delta R.T. -0.01 min  
 Lab File: BM016715.D  
 Acq: 11 Sep 2018 10:36

Instrument :  
 BNA\_M  
 ClientSampled :  
 MDL-W-01

Tgt Ion	Resp	Lower	Upper
178	217313		
179	16.3	13.4	20.2
176	18.8	15.4	23.0

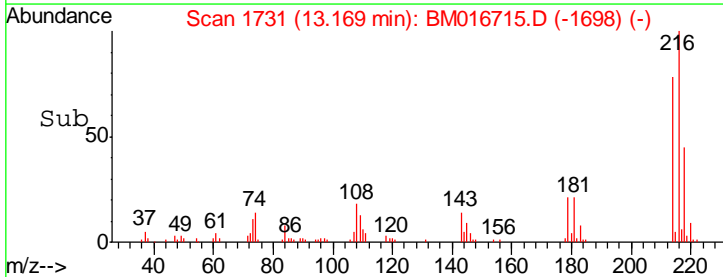
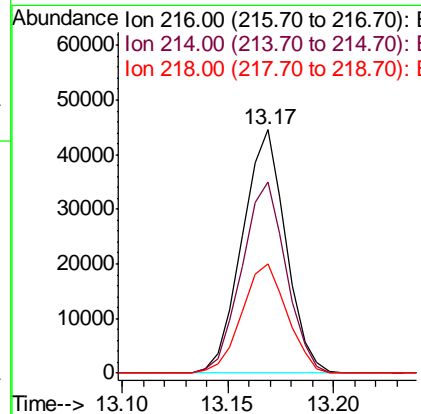
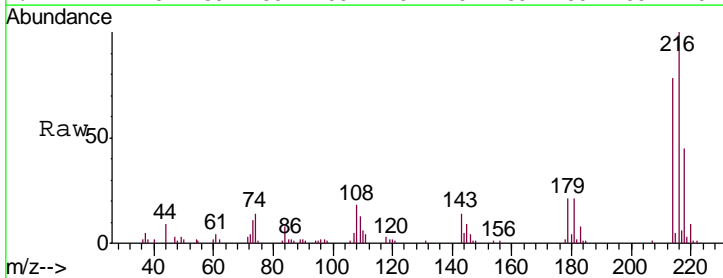
Manual Integrations  
 APPROVED

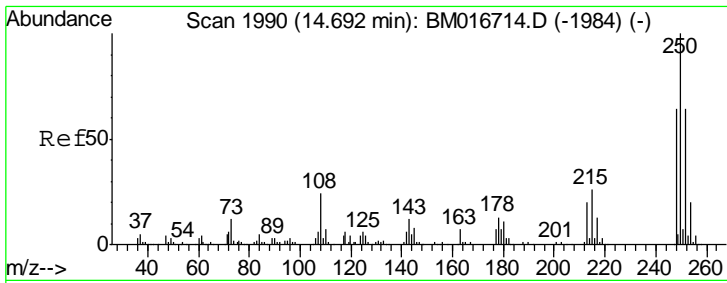
Sohil  
 9/12/2018 2:57:31 PM



#73  
 1,2,3,4-Tetrachlorobenzene  
 Concen: 3.970 ng/uL  
 RT: 13.17 min Scan# 1731  
 Delta R.T. -0.01 min  
 Lab File: BM016715.D  
 Acq: 11 Sep 2018 10:36

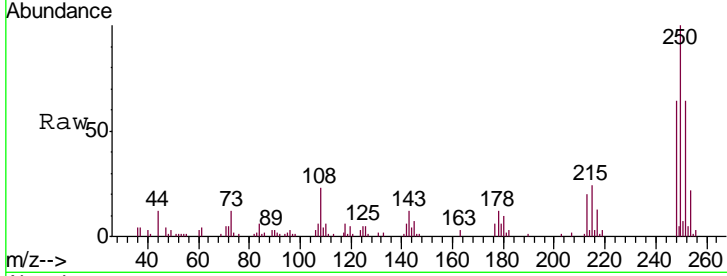
Tgt Ion	Resp	Lower	Upper
216	63831		
214	78.3	64.1	96.1
218	44.9	39.4	59.0





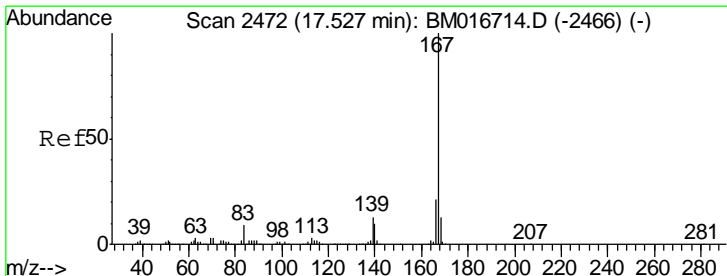
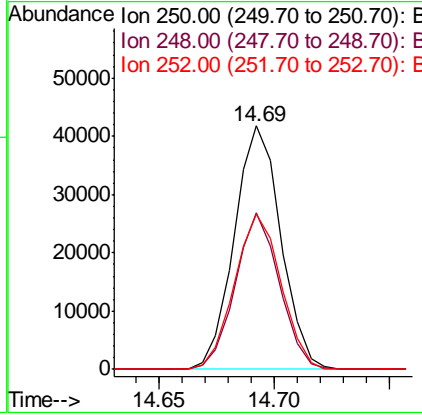
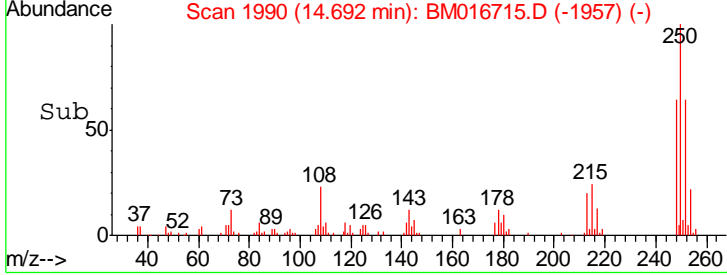
#74  
 Pentachlorobenzene  
 Concen: 4.047 ng/uL  
 RT: 14.69 min Scan# 1990  
 Delta R.T. -0.01 min  
 Lab File: BM016715.D  
 Acq: 11 Sep 2018 10:36

**Instrument :**  
 BNA\_M  
**ClientSampled :**  
 MDL-W-01

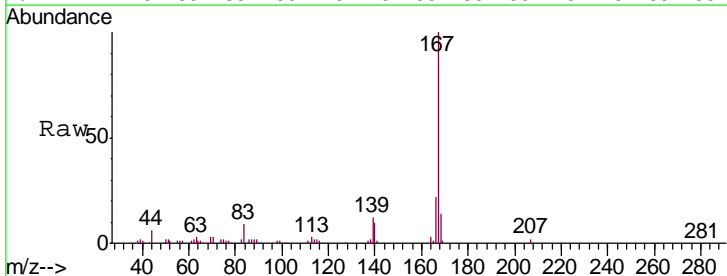


Tgt Ion	Resp	Lower	Upper
250	100		
248	64.1	51.4	77.2
252	63.9	49.8	74.6

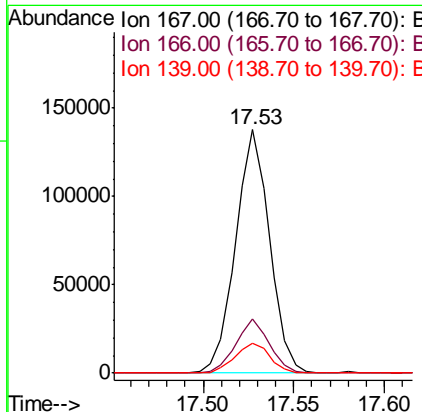
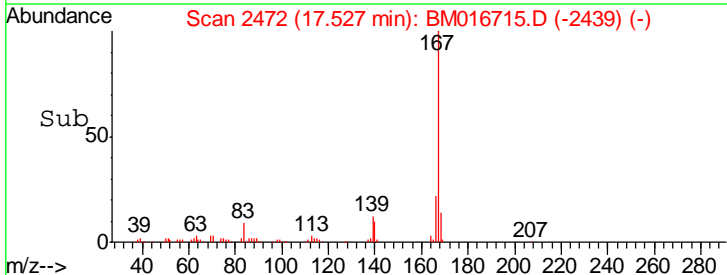
**Manual Integrations**  
**APPROVED**  
 Sohil  
 9/12/2018 2:57:31 PM



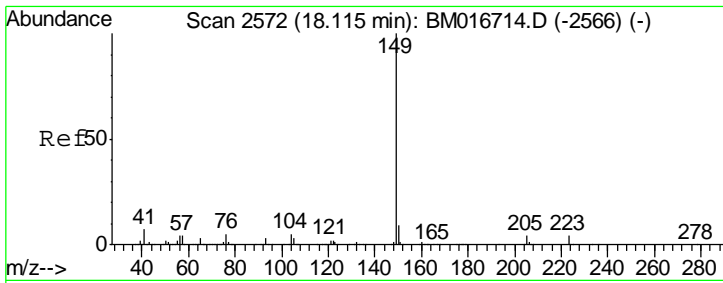
#75  
 Carbazole  
 Concen: 3.703 ng/ul  
 RT: 17.53 min Scan# 2472  
 Delta R.T. -0.01 min  
 Lab File: BM016715.D  
 Acq: 11 Sep 2018 10:36



Tgt Ion	Resp	Lower	Upper
167	100		
166	22.1	17.0	25.4
139	12.4	9.1	13.7







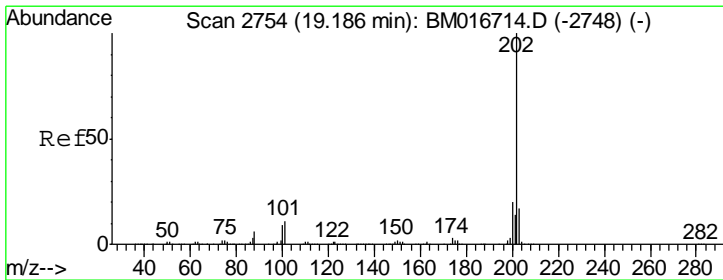
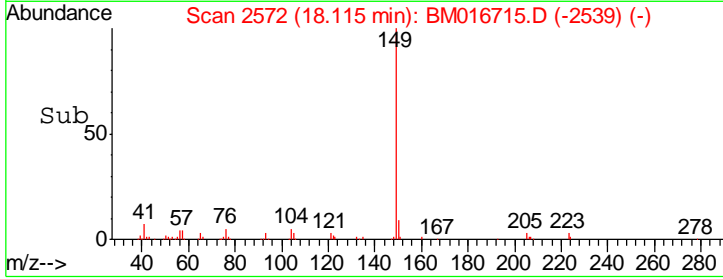
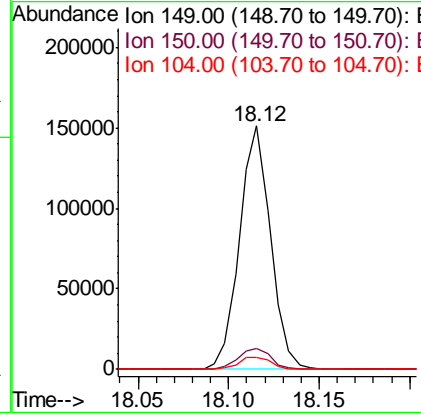
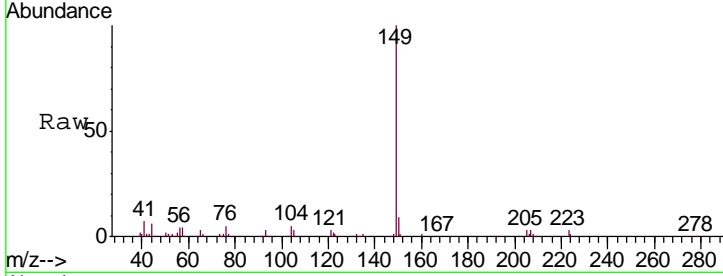
#76  
 Di-n-butylphthalate  
 Concen: 3.168 ng/ul  
 RT: 18.12 min Scan# 2572  
 Delta R.T. -0.01 min  
 Lab File: BM016715.D  
 Acq: 11 Sep 2018 10:36

**Instrument :**  
 BNA\_M  
**Client Sampled :**  
 MDL-W-01

Tgt Ion	Resp	Lower	Upper
149	179484		
150	8.7	7.5	11.3
104	5.0	4.1	6.1

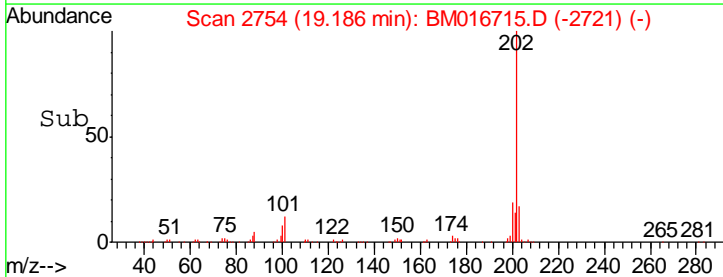
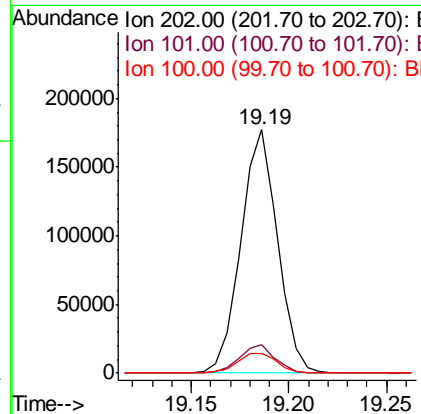
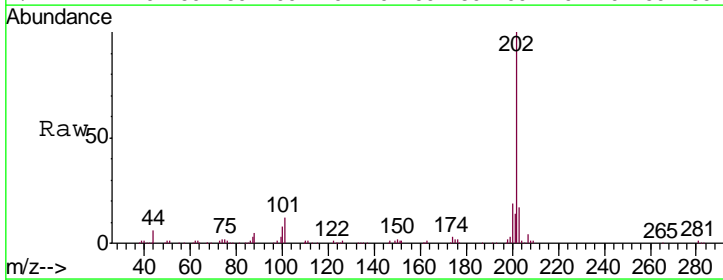
**Manual Integrations**  
**APPROVED**

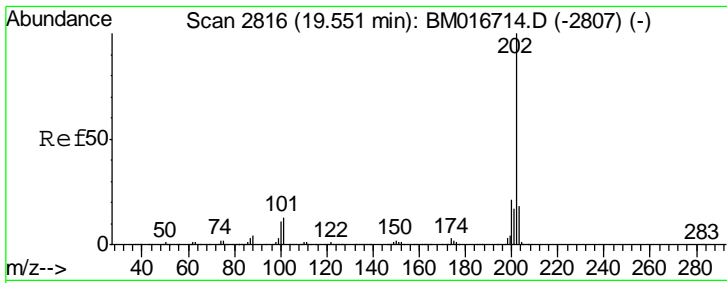
Sohil  
 9/12/2018 2:57:31 PM



#77  
 Fluoranthene  
 Concen: 3.730 ng/ul  
 RT: 19.19 min Scan# 2754  
 Delta R.T. -0.01 min  
 Lab File: BM016715.D  
 Acq: 11 Sep 2018 10:36

Tgt Ion	Resp	Lower	Upper
202	230731		
101	11.6	6.1	9.1#
100	8.3	4.6	7.0#





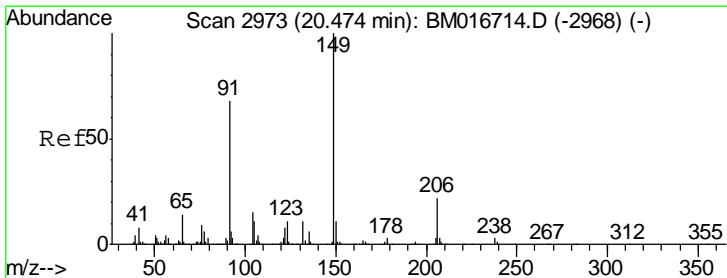
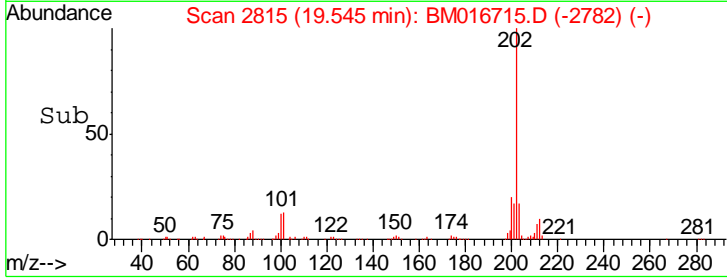
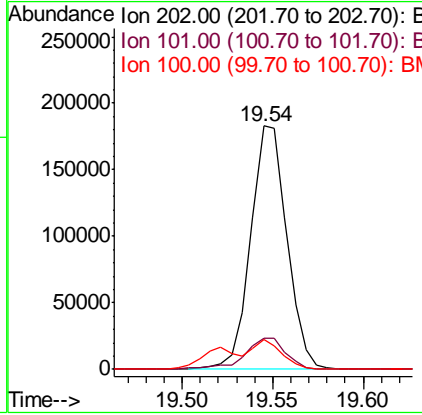
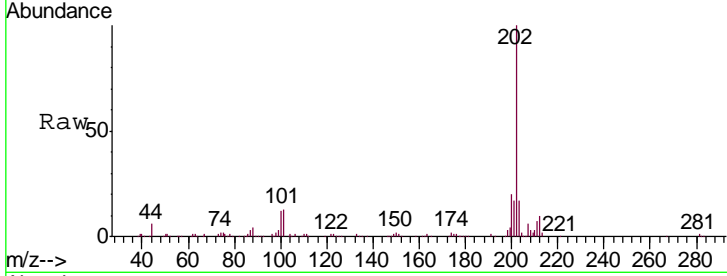
#80  
 Pyrene  
 Concen: 3.945 ng/ul  
 RT: 19.54 min Scan# 2815  
 Delta R.T. -0.01 min  
 Lab File: BM016715.D  
 Acq: 11 Sep 2018 10:36

Instrument :  
 BNA\_M  
 ClientSampled :  
 MDL-W-01

Tgt Ion	Ratio	Lower	Upper
202	100		
101	12.6	6.9	10.3#
100	12.2	5.6	8.4#

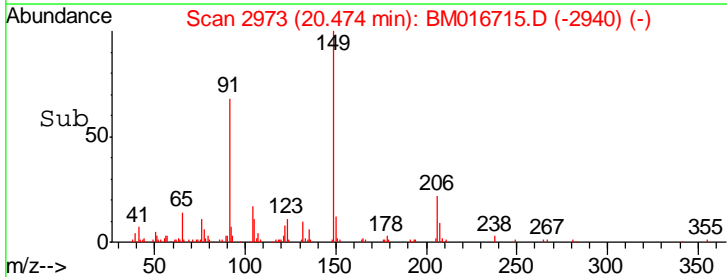
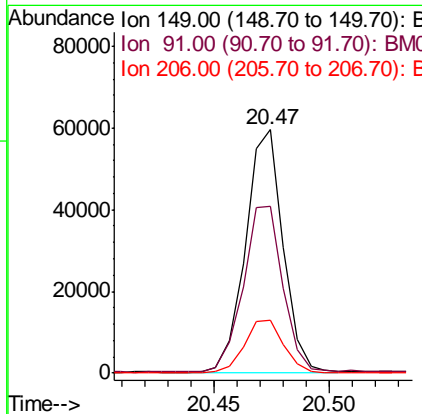
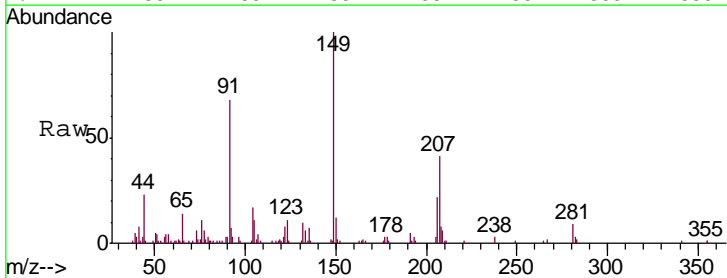
Manual Integrations  
 APPROVED

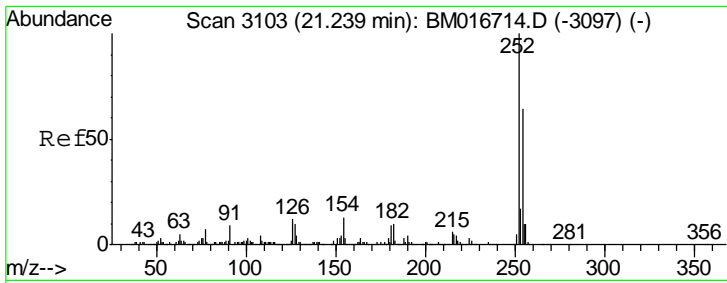
Sohil  
 9/12/2018 2:57:31 PM



#81  
 Butylbenzylphthalate  
 Concen: 2.862 ng/ul  
 RT: 20.47 min Scan# 2973  
 Delta R.T. -0.01 min  
 Lab File: BM016715.D  
 Acq: 11 Sep 2018 10:36

Tgt Ion	Ratio	Lower	Upper
149	100		
91	68.3	53.4	80.0
206	21.6	19.3	28.9



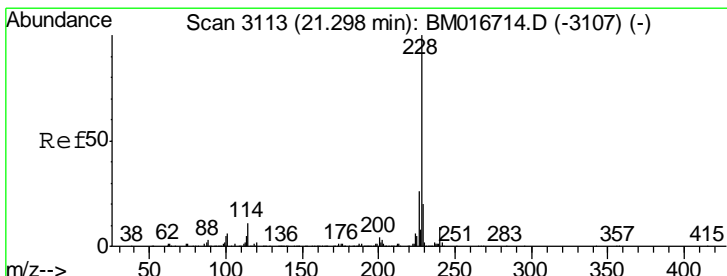
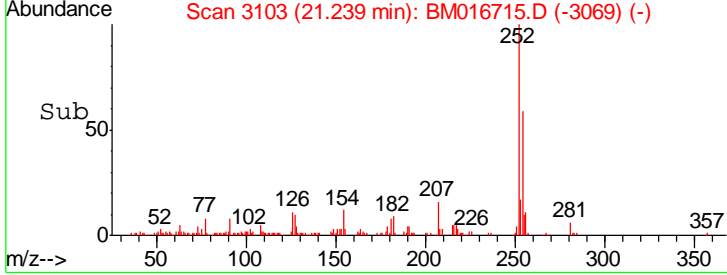
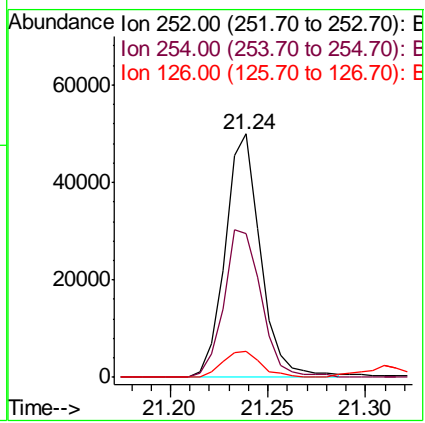
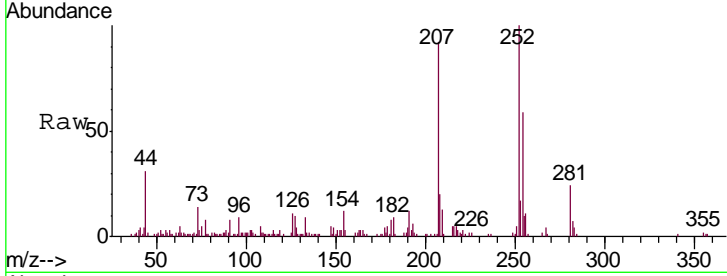


#82  
 3,3'-Dichlorobenzidine  
 Concen: 3.015 ng/ul  
 RT: 21.24 min Scan# 3103  
 Delta R.T. 0.00 min  
 Lab File: BM016715.D  
 Acq: 11 Sep 2018 10:36

Instrument :  
 BNA\_M  
 ClientSampled :  
 MDL-W-01

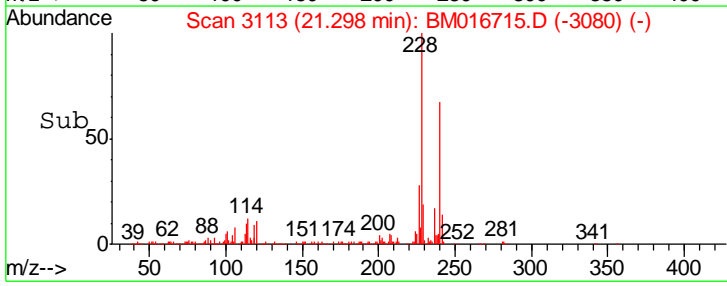
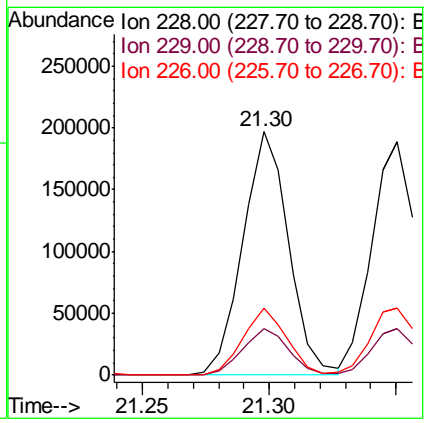
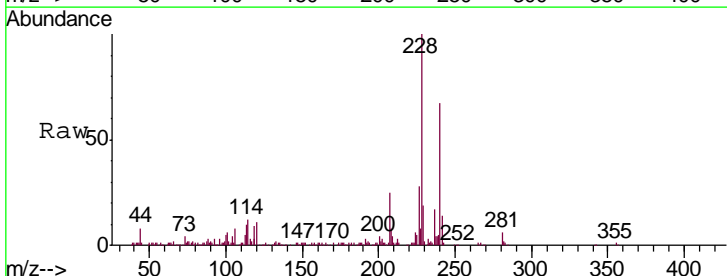
Tgt Ion	Resp	Lower	Upper
252	100		
254	59.3	52.8	79.2
126	10.7	6.9	10.3#

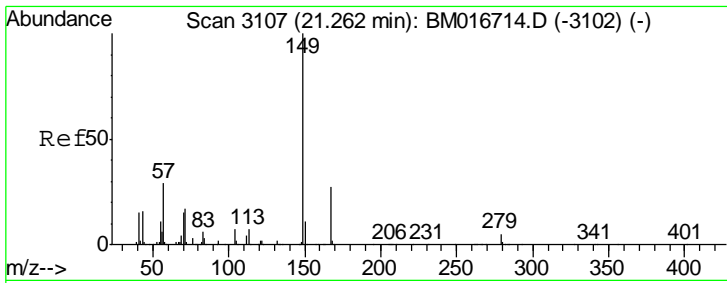
Manual Integrations  
**APPROVED**  
 Sohil  
 9/12/2018 2:57:31 PM



#83  
 Benzo(a)anthracene  
 Concen: 3.812 ng/ul  
 RT: 21.30 min Scan# 3113  
 Delta R.T. -0.01 min  
 Lab File: BM016715.D  
 Acq: 11 Sep 2018 10:36

Tgt Ion	Resp	Lower	Upper
228	100		
229	18.9	16.0	24.0
226	27.6	21.8	32.8





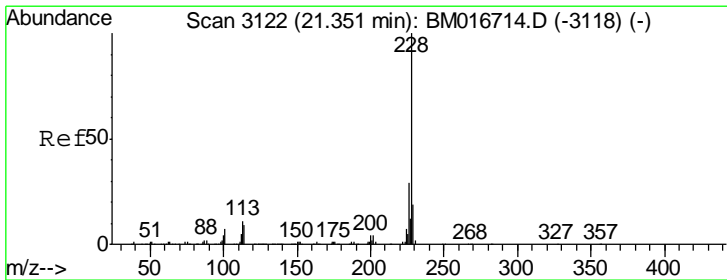
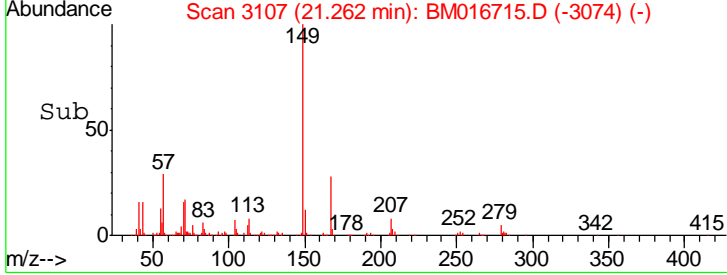
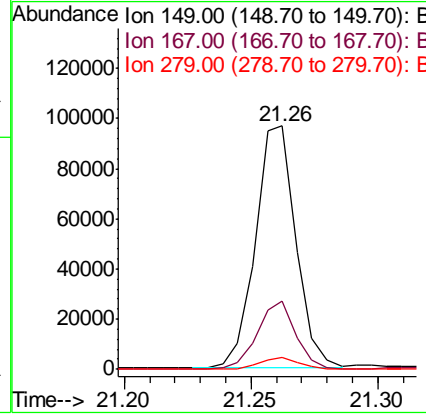
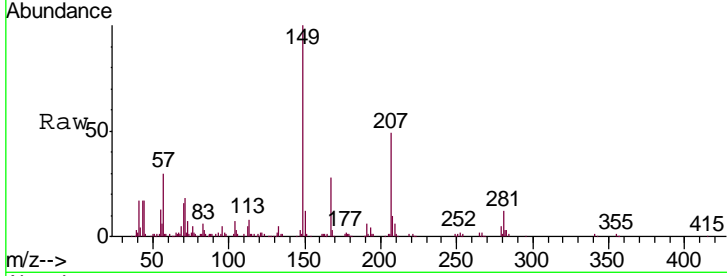
#84  
 Bis(2-ethylhexyl)phthalate  
 Concen: 2.860 ng/ul  
 RT: 21.26 min Scan# 3107  
 Delta R.T. -0.01 min  
 Lab File: BM016715.D  
 Acq: 11 Sep 2018 10:36

**Instrument :**  
 BNA\_M  
**ClientSampled :**  
 MDL-W-01

Tgt Ion	Resp	Lower	Upper
149	107055		
167	27.9	23.0	34.6
279	5.0	4.3	6.5

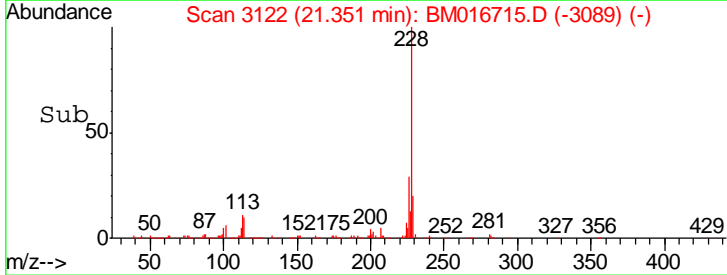
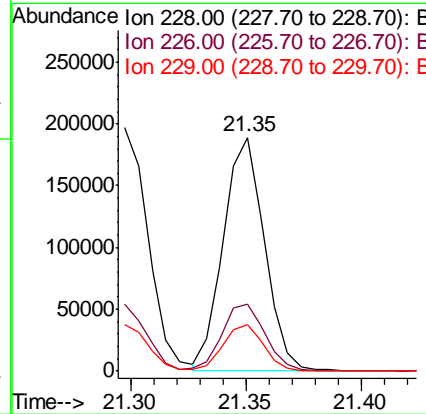
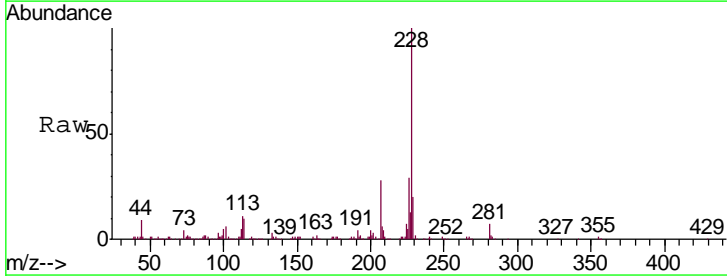
**Manual Integrations**  
**APPROVED**

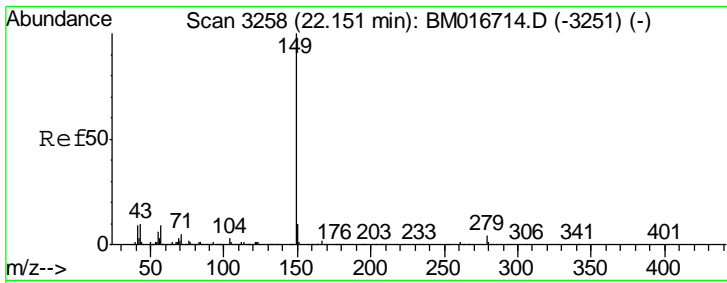
Sohil  
 9/12/2018 2:57:31 PM



#85  
 Chrysene  
 Concen: 3.857 ng/ul  
 RT: 21.35 min Scan# 3122  
 Delta R.T. -0.01 min  
 Lab File: BM016715.D  
 Acq: 11 Sep 2018 10:36

Tgt Ion	Resp	Lower	Upper
228	233582		
226	28.7	24.1	36.1
229	19.6	16.0	24.0

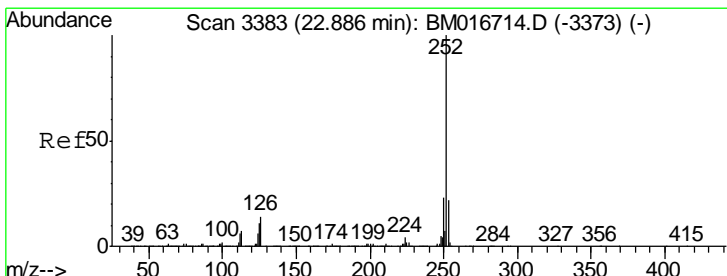
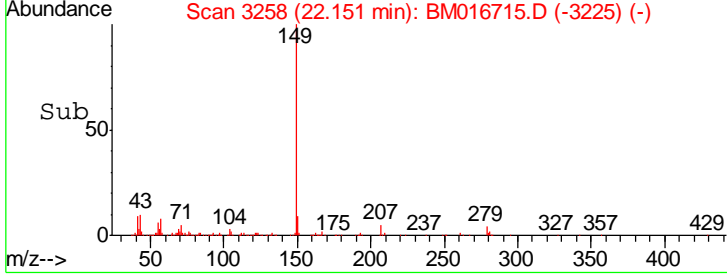
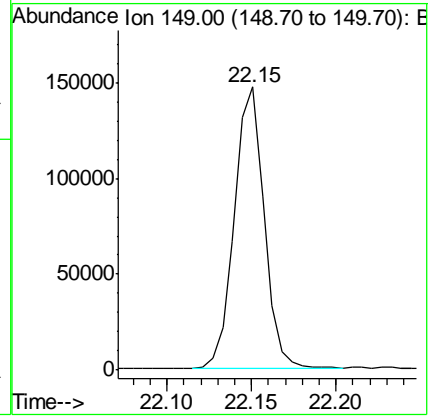
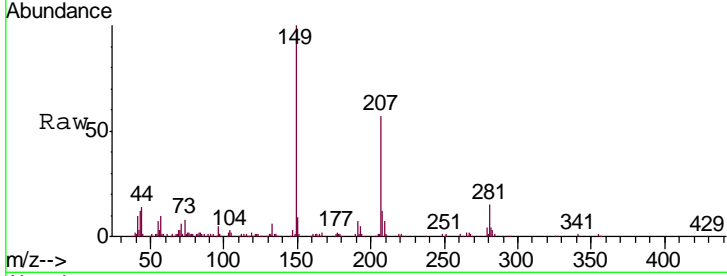




#87  
 Di-n-octyl phthalate  
 Concen: 2.758 ng/ul  
 RT: 22.15 min Scan# 3258  
 Delta R.T. -0.01 min  
 Lab File: BM016715.D  
 Acq: 11 Sep 2018 10:36  
 Tgt Ion:149 Resp: 179817

Instrument :  
 BNA\_M  
 ClientSampled :  
 MDL-W-01

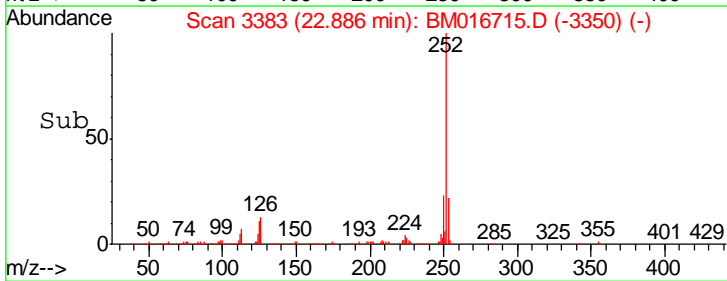
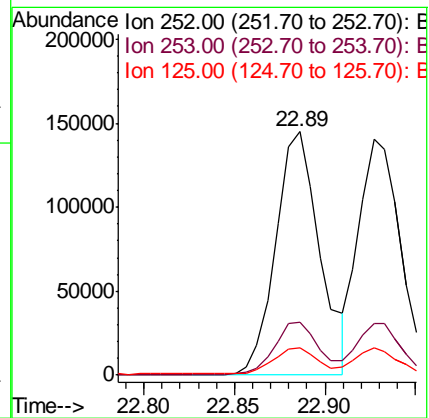
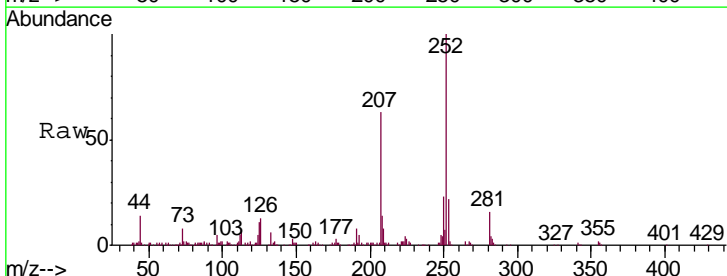
Manual Integrations  
 APPROVED  
 Sohil  
 9/12/2018 2:57:31 PM

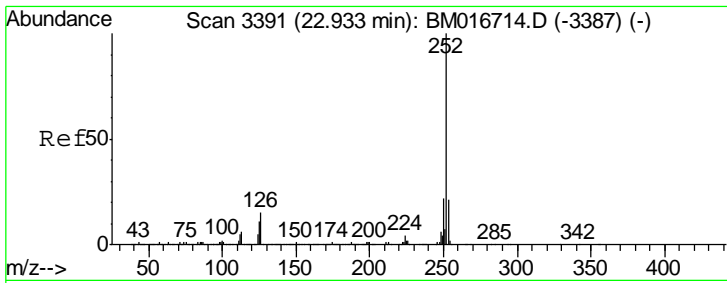


#88  
 Benzo(b)fluoranthene  
 Concen: 3.799 ng/ul  
 RT: 22.89 min Scan# 3383  
 Delta R.T. -0.01 min  
 Lab File: BM016715.D  
 Acq: 11 Sep 2018 10:36

Tgt Ion:252 Resp: 246767

Ion	Ratio	Lower	Upper
252	100		
253	21.8	17.4	26.0
125	11.2	4.9	7.3#





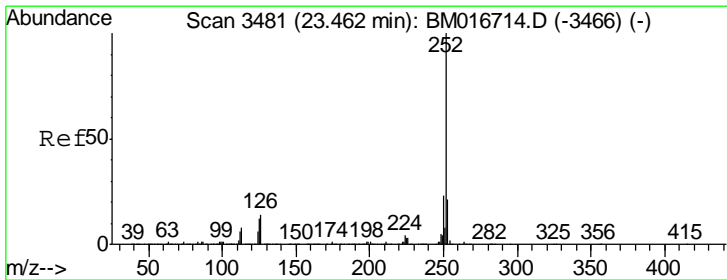
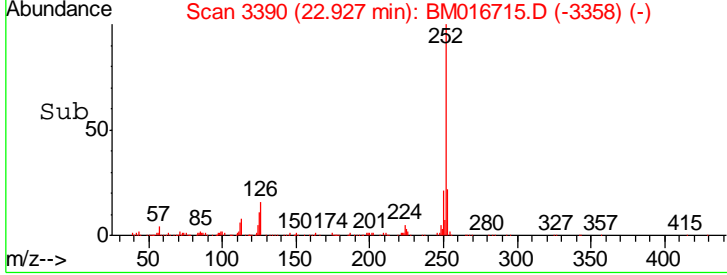
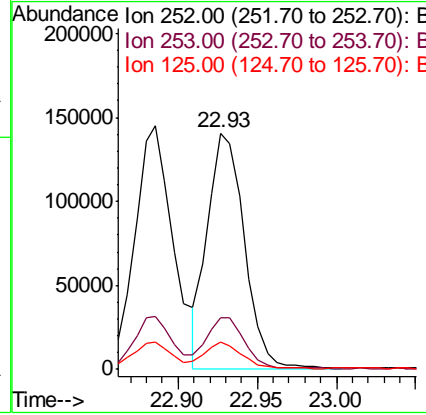
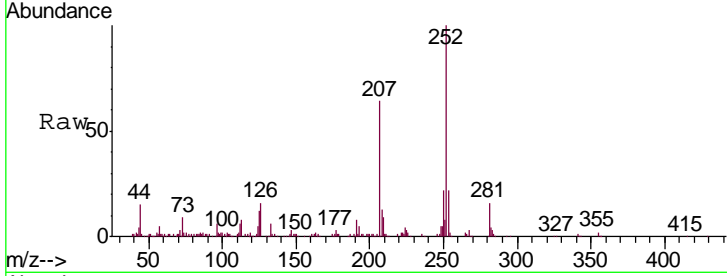
#89  
 Benzo(k)fluoranthene  
 Concen: 3.654 ng/ul  
 RT: 22.93 min Scan# 3390  
 Delta R.T. -0.01 min  
 Lab File: BM016715.D  
 Acq: 11 Sep 2018 10:36

**Instrument :**  
 BNA\_M  
**ClientSampled :**  
 MDL-W-01

Tgt Ion	Resp	Lower	Upper
252	100		
253	21.8	17.1	25.7
125	11.6	5.4	8.0#

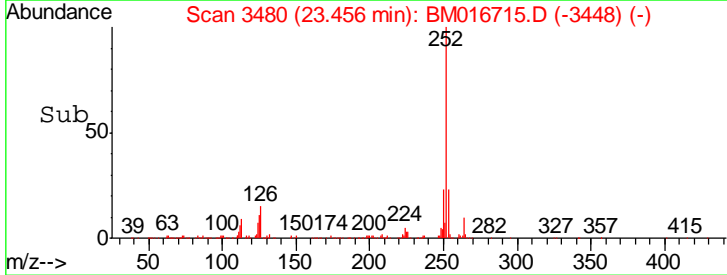
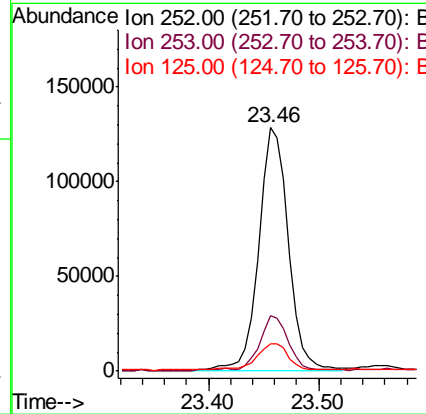
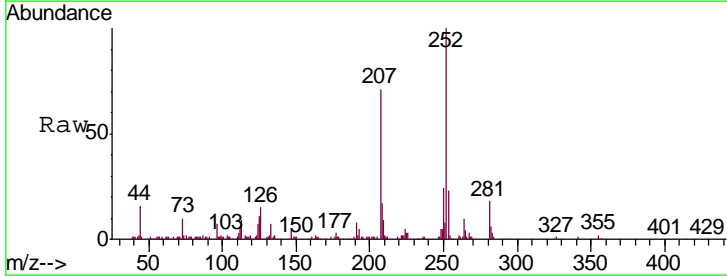
**Manual Integrations**  
**APPROVED**

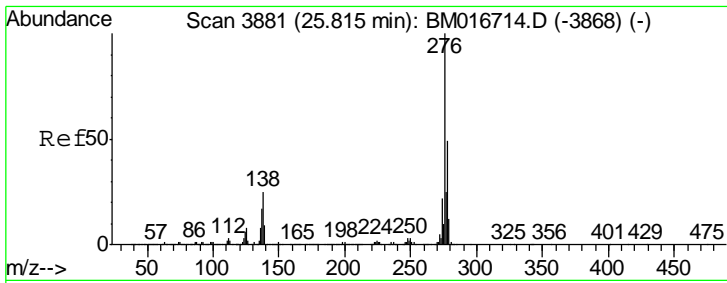
Sohil  
 9/12/2018 2:57:31 PM



#91  
 Benzo(a)pyrene  
 Concen: 3.906 ng/ul  
 RT: 23.46 min Scan# 3480  
 Delta R.T. -0.01 min  
 Lab File: BM016715.D  
 Acq: 11 Sep 2018 10:36

Tgt Ion	Resp	Lower	Upper
252	100		
253	22.9	17.2	25.8
125	11.3	5.8	8.6#





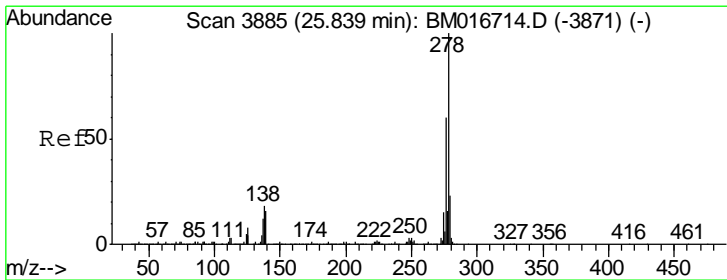
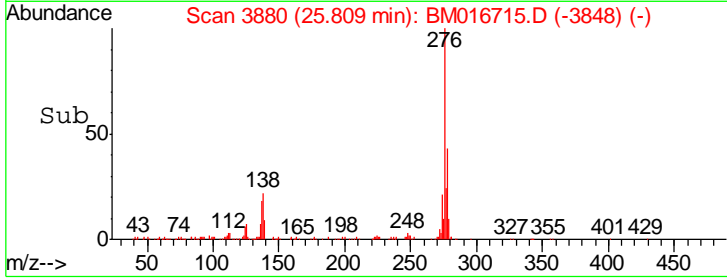
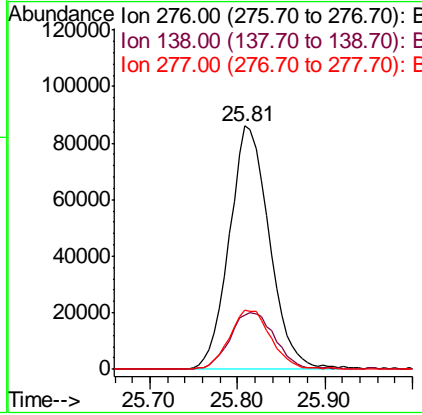
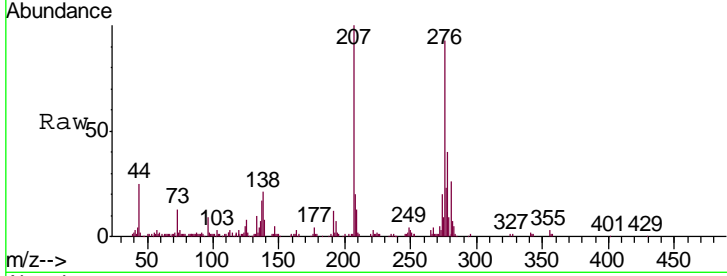
#92  
 Indeno(1,2,3-cd)pyrene  
 Concen: 3.635 ng/ul  
 RT: 25.81 min Scan# 3880  
 Delta R.T. -0.01 min  
 Lab File: BM016715.D  
 Acq: 11 Sep 2018 10:36

**Instrument :**  
 BNA\_M  
**Client Sampled :**  
 MDL-W-01

Tgt Ion	Resp	Lower	Upper
276	268487		
138	22.4	10.9	16.3#
277	24.3	18.9	28.3

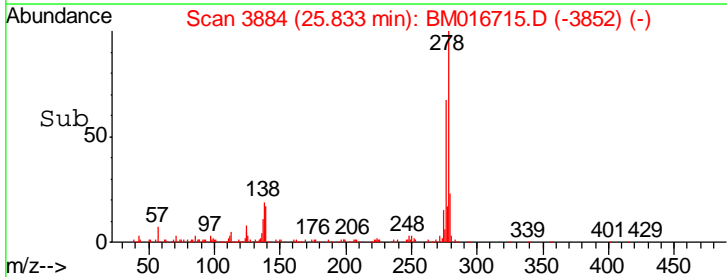
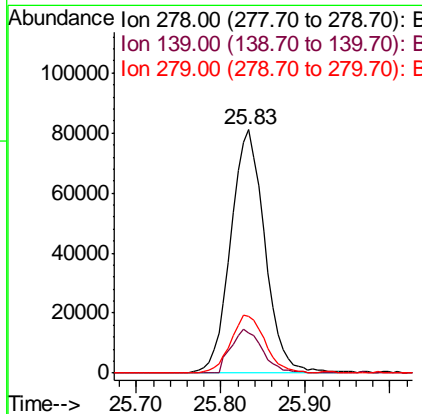
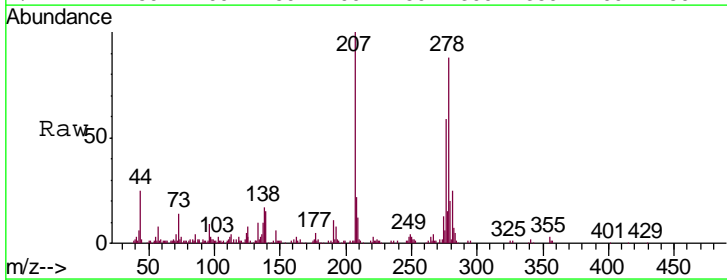
**Manual Integrations**  
**APPROVED**

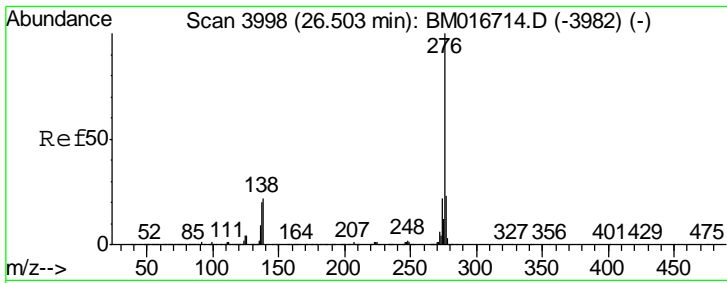
Sohil  
 9/12/2018 2:57:31 PM



#93  
 Dibenzo(a,h)anthracene  
 Concen: 3.665 ng/ul  
 RT: 25.83 min Scan# 3884  
 Delta R.T. -0.01 min  
 Lab File: BM016715.D  
 Acq: 11 Sep 2018 10:36

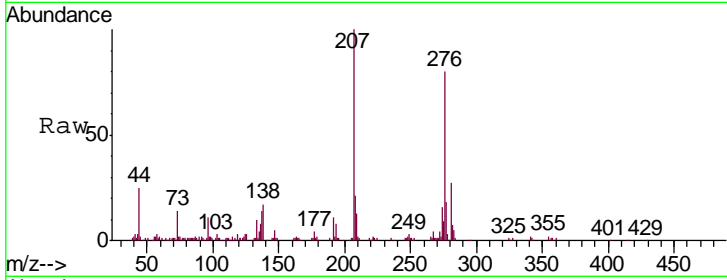
Tgt Ion	Resp	Lower	Upper
278	226416		
139	16.7	9.0	13.4#
279	23.1	19.1	28.7





#94  
 Benzo(g,h,i)perylene  
 Concen: 3.679 ng/ul  
 RT: 26.50 min Scan# 3997  
 Delta R.T. -0.01 min  
 Lab File: BM016715.D  
 Acq: 11 Sep 2018 10:36

Instrument :  
 BNA\_M  
 ClientSampled :  
 MDL-W-01



Tgt Ion: 276 Resp: 225296

Ion	Ratio	Lower	Upper
276	100		
138	21.0	11.2	16.8#
277	22.6	19.0	28.6

Manual Integrations  
 APPROVED  
 Sohil  
 9/12/2018 2:57:31 PM

