

Data Path : Z:\SVOASRV\HPCHEM1\BNA M\DATA\BM091918\
 Data File : BM016810.D
 Acq On : 19 Sep 2018 23:38
 Operator : SJ/JU
 Sample : J4896-15
 Misc :
 ALS Vial : 22 Sample Multiplier: 1

Instrument :
 BNA_M
 ClientSampled :

Quant Time: Sep 20 03:07:41 2018
 Quant Method : Z:\SVOASRV\HPCHEM1\BNA_M\METHODS\SOM-EPA-BM091018MA.M
 Quant Title : SVOA CALIBRATION
 QLast Update : Thu Sep 20 03:06:22 2018
 Response via : Initial Calibration

Internal Standards	R.T.	QIon	Response	Conc	Units	Dev(Min)
1) 1,4-Dichlorobenzene-d4	7.73	152	296698	20.00	ng/ul	0.01
18) Naphthalene-d8	10.52	136	1235531	20.00	ng/ul	0.01
36) Acenaphthene-d10	14.36	164	667457	20.00	ng/ul	0.00
62) Phenanthrene-d10	17.11	188	1519582	20.00	ng/ul	0.00
78) Chrysene-d12	21.30	240	1763728	20.00	ng/ul	0.00
86) Perylene-d12	23.53	264	1928752	20.00	ng/ul	0.00

System Monitoring Compounds

3) 1,4-Dioxane-d8	3.27	96	59595	8.59	ng/uL	0.00
5) Phenol-d5	6.89	99	560815	22.41	ng/ul	0.00
7) Bis-(2-Chloroethyl)ether-d	7.07	67	348862	22.51	ng/ul	0.00
9) 2-Chlorophenol-d4	7.26	132	478504	23.43	ng/ul	0.00
13) 4-Methylphenol-d8	8.42	113	456563	23.58	ng/ul	0.00
19) Nitrobenzene-d5	8.87	128	218904	26.96	ng/ul	0.00
22) 2-Nitrophenol-d4	9.59	143	216744	29.37	ng/ul	0.00
26) 2,4-Dichlorophenol-d3	10.13	165	435015	23.20	ng/ul	0.00
29) 4-Chloroaniline-d4	10.65	131	553851	24.46	ng/ul	0.00
44) Dimethylphthalate-d6	13.77	166	1275538	23.80	ng/ul	0.00
47) Acenaphthylene-d8	14.05	160	1532012	22.13	ng/ul	0.00
52) 4-Nitrophenol-d4	14.56	143	226078	25.70	ng/ul	0.00
58) Fluorene-d10	15.36	176	1131027	24.18	ng/ul	0.00
63) 4,6-Dinitro-2-methylphenol	15.47	200	147084	23.58	ng/ul	0.00
71) Anthracene-d10	17.21	188	1821735	24.85	ng/ul	0.00
79) Pyrene-d10	19.50	212	2118172	24.75	ng/ul	0.00
90) Benzo(a)pyrene-d12	23.39	264	2524375	25.09	ng/ul	0.00

Target Compounds

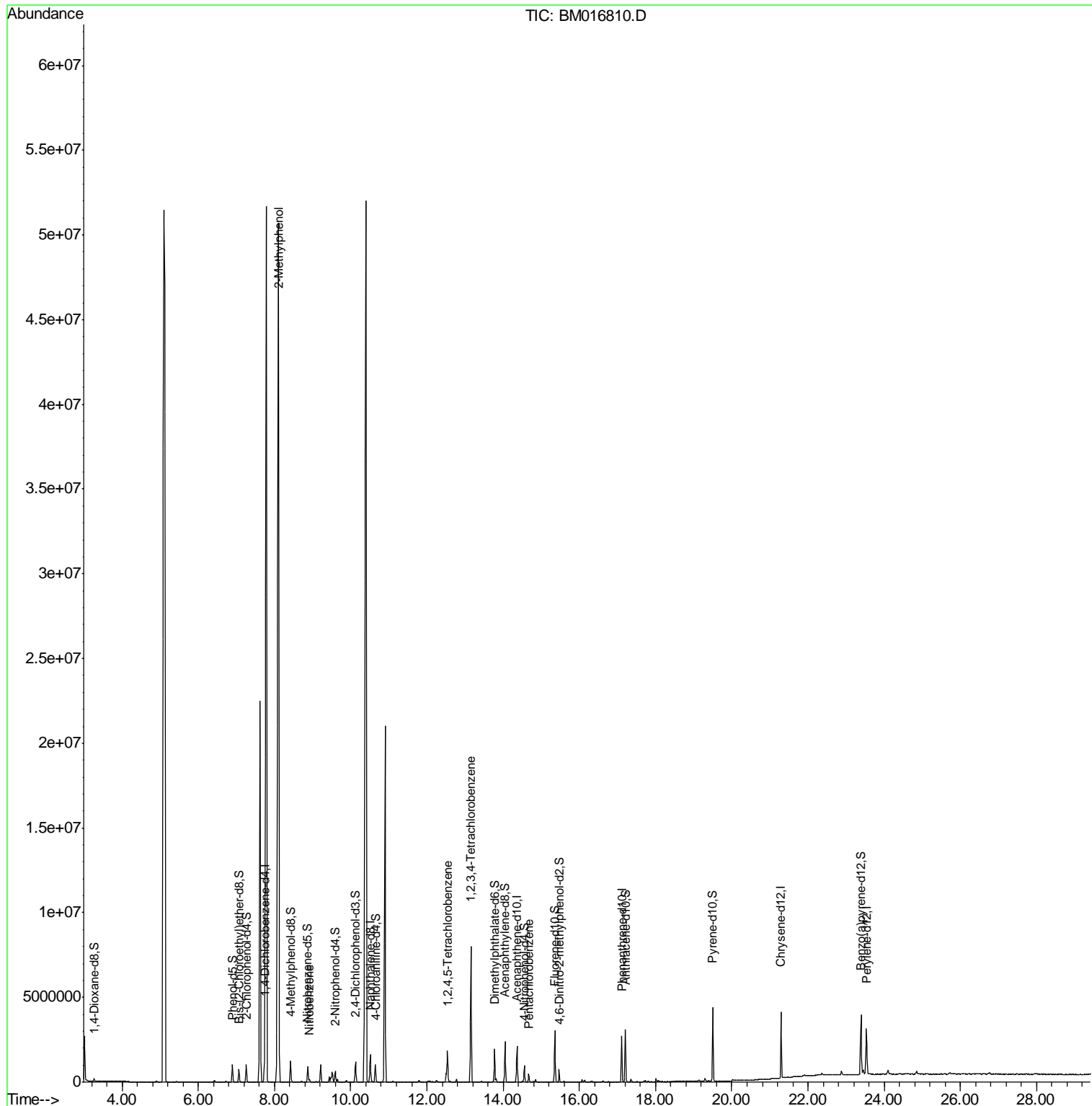
Target Compounds	R.T.	QIon	Response	Conc	Units	Ovalue
11) 2-Methylphenol	8.10	108	254396	13.588	ng/ul	98
20) Nitrobenzene	8.92	77	86829	4.228	ng/ul#	88
37) 1,2,4,5-Tetrachlorobenzene	12.54	216	584876	25.515	ng/ul	97
73) 1,2,3,4-Tetrachlorobenzene	13.15	216	2467845	98.124	ng/uL	98
74) Pentachlorobenzene	14.67	250	131618	5.801	ng/uL	99

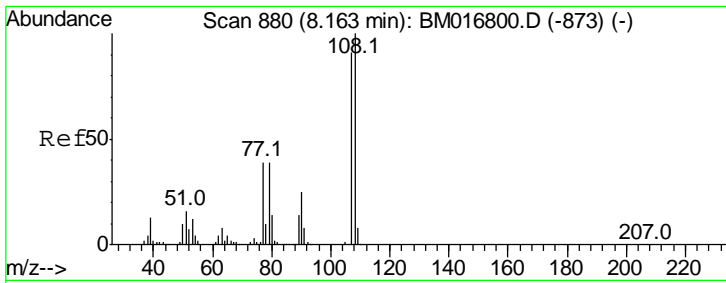
(#) = qualifier out of range (m) = manual integration (+) = signals summed

Data Path : Z:\SVOASRV\HPCHEM1\BNA M\DATA\BM091918\
 Data File : BM016810.D
 Acq On : 19 Sep 2018 23:38
 Operator : SJ/JU
 Sample : J4896-15
 Misc :
 ALS Vial : 22 Sample Multiplier: 1

Instrument :
 BNA_M
 ClientSampled :

Quant Time: Sep 20 03:07:41 2018
 Quant Method : Z:\SVOASRV\HPCHEM1\BNA_M\METHODS\SOM-EPA-BM091018MA.M
 Quant Title : SVOA CALIBRATION
 QLast Update : Thu Sep 20 03:06:22 2018
 Response via : Initial Calibration

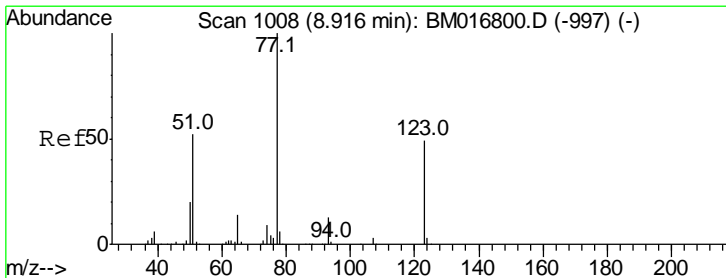
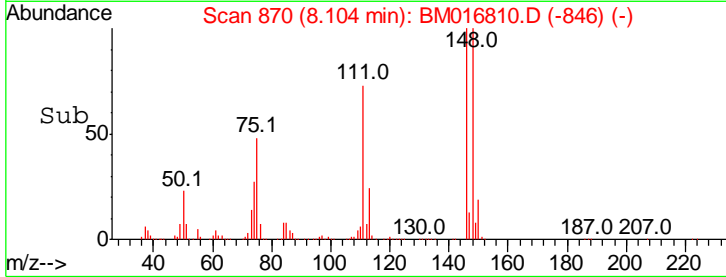
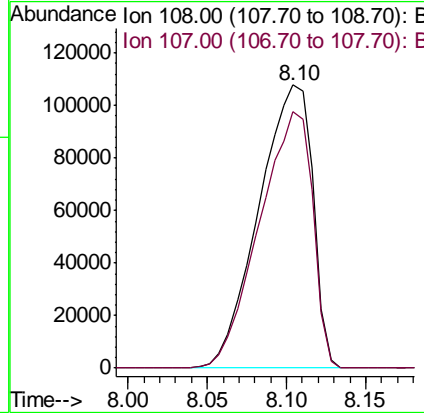
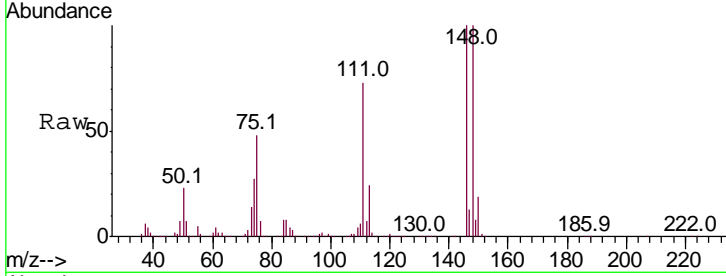




#11
 2-Methylphenol
 Concen: 13.588 ng/ul
 RT: 8.10 min Scan# 870
 Delta R.T. -0.06 min
 Lab File: BM016810.D
 Acq: 19 Sep 2018 23:38

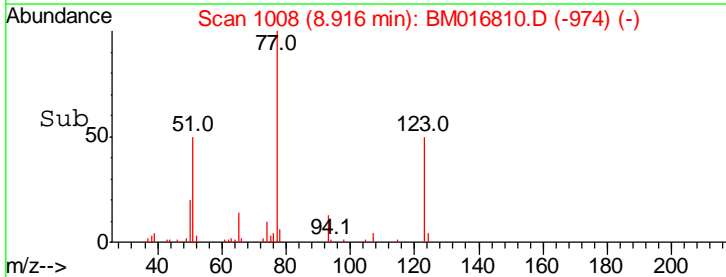
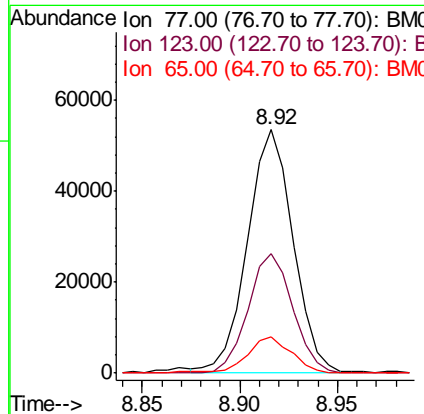
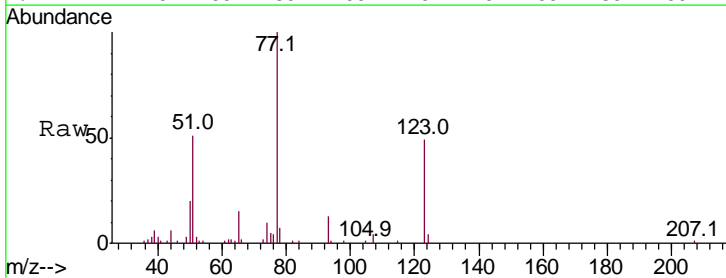
Instrument :
 BNA_M
ClientSampled :

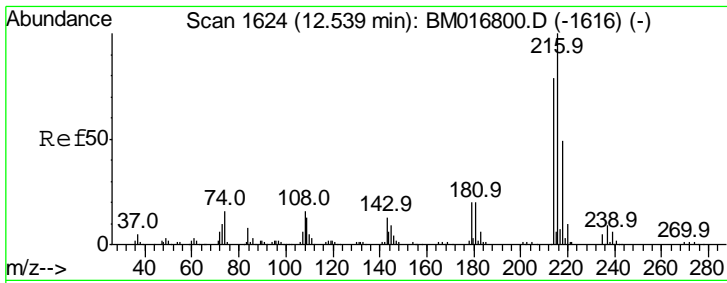
Tgt Ion	Resp	Lower	Upper
108	100		
107	90.6	74.1	111.1



#20
 Nitrobenzene
 Concen: 4.228 ng/ul
 RT: 8.92 min Scan# 1008
 Delta R.T. 0.00 min
 Lab File: BM016810.D
 Acq: 19 Sep 2018 23:38

Tgt Ion	Resp	Lower	Upper
77	100		
123	49.1	31.8	47.8#
65	14.8	10.6	16.0

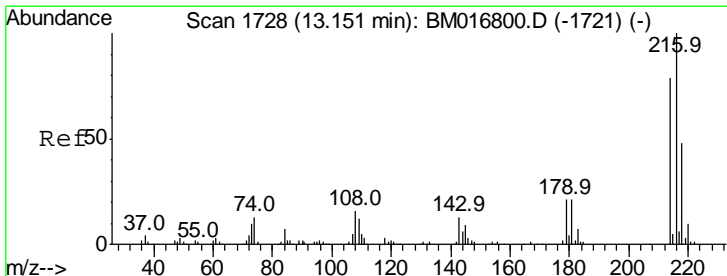
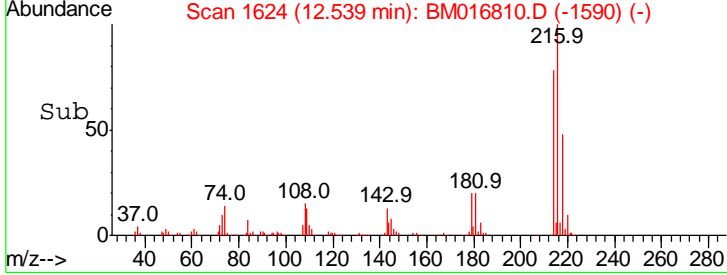
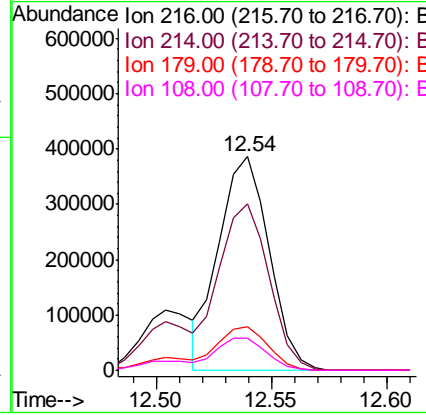
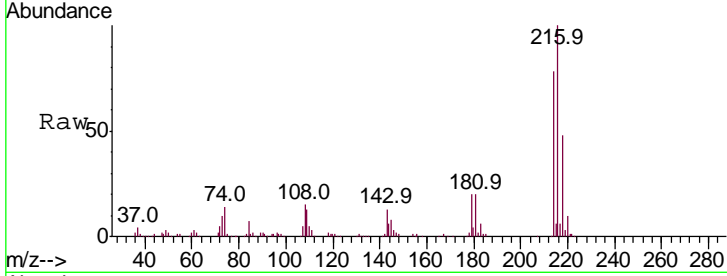




#37
 1,2,4,5-Tetrachlorobenzene
 Concen: 25.515 ng/ul
 RT: 12.54 min Scan# 1624
 Delta R.T. 0.00 min
 Lab File: BM016810.D
 Acq: 19 Sep 2018 23:38

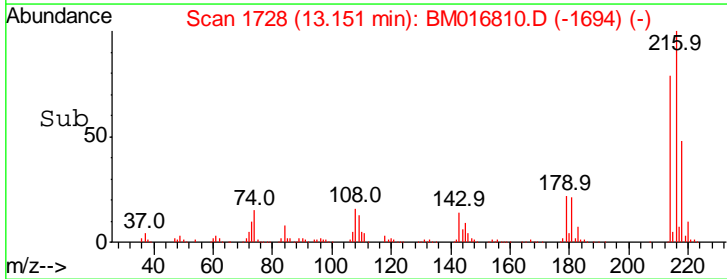
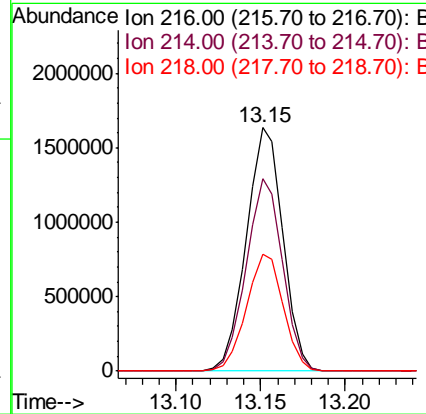
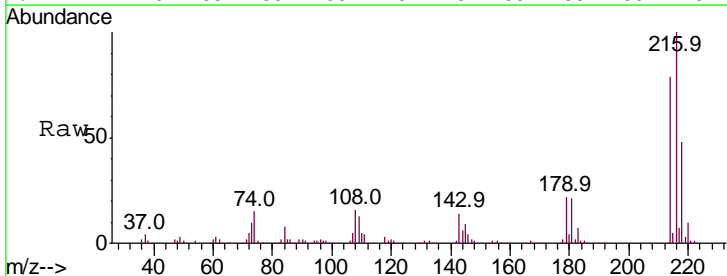
Instrument :
 BNA_M
 ClientSampled :

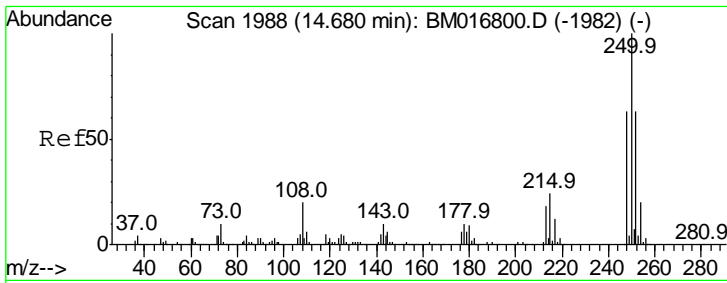
Tgt Ion	Resp	Lower	Upper
216	100		
214	77.7	64.1	96.1
179	20.3	14.5	21.7
108	14.8	10.4	15.6



#73
 1,2,3,4-Tetrachlorobenzene
 Concen: 98.124 ng/uL
 RT: 13.15 min Scan# 1728
 Delta R.T. 0.00 min
 Lab File: BM016810.D
 Acq: 19 Sep 2018 23:38

Tgt Ion	Resp	Lower	Upper
216	100		
214	78.9	64.1	96.1
218	47.9	39.4	59.0



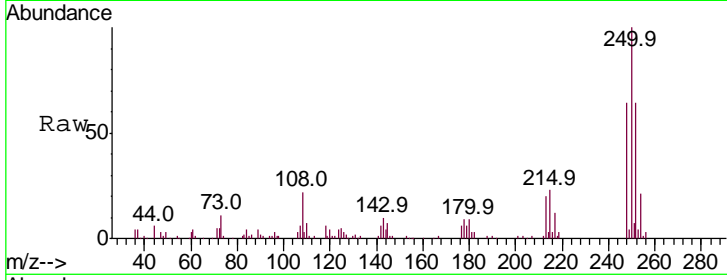


#74

Pentachlorobenzene
 Concen: 5.801 ng/uL
 RT: 14.67 min Scan# 1987
 Delta R.T. -0.01 min
 Lab File: BM016810.D
 Acq: 19 Sep 2018 23:38

Instrument :
 BNA_M
 ClientSampled :

Tot Ion	Ratio	Lower	Upper
250	100		
248	63.8	51.4	77.2
252	63.7	49.8	74.6



Abundance

Ion 250.00 (249.70 to 250.70): E
 Ion 248.00 (247.70 to 248.70): E
 Ion 252.00 (251.70 to 252.70): E

