

Data Path : Z:\svoasrv\HPCHEM1\BNA_M\Data\BM091923\
 Data File : BM041901.D
 Acq On : 19 Sep 2023 09:16
 Operator : MA/JU
 Sample : PB155456BL
 Misc :
 ALS Vial : 3 Sample Multiplier: 1

Instrument :
 BNA_M
 ClientSampleId :
 PB155456BL

Quant Time: Sep 19 11:13:30 2023
 Quant Method : Z:\svoasrv\HPCHEM1\BNA_M\Methods\8270-BM091823.M
 Quant Title : ASP BNA STANDARDS FOR 5 POINT CALIBRATION
 QLast Update : Tue Sep 19 04:49:34 2023
 Response via : Initial Calibration

Compound	R.T.	QIon	Response	Conc	Units	Dev(Min)
Internal Standards						
1) 1,4-Dichlorobenzene-d4	7.963	152	278341	20.000	ng	0.00
21) Naphthalene-d8	10.781	136	1121307	20.000	ng	0.00
39) Acenaphthene-d10	14.610	164	712660	20.000	ng	0.00
64) Phenanthrene-d10	17.363	188	1511602	20.000	ng	0.00
76) Chrysene-d12	21.533	240	1186864	20.000	ng	-0.01
86) Perylene-d12	23.951	264	1170023	20.000	ng	-0.01
System Monitoring Compounds						
5) 2-Fluorophenol	5.505	112	2790767	167.000	ng	0.00
7) Phenol-d6	7.110	99	3667008	158.041	ng	0.00
23) Nitrobenzene-d5	9.157	82	2302131	104.533	ng	0.00
42) 2,4,6-Tribromophenol	16.104	330	1469552	165.270	ng	0.00
45) 2-Fluorobiphenyl	13.228	172	5023195	103.456	ng	0.00
79) Terphenyl-d14	19.974	244	7437196	114.127	ng	0.00

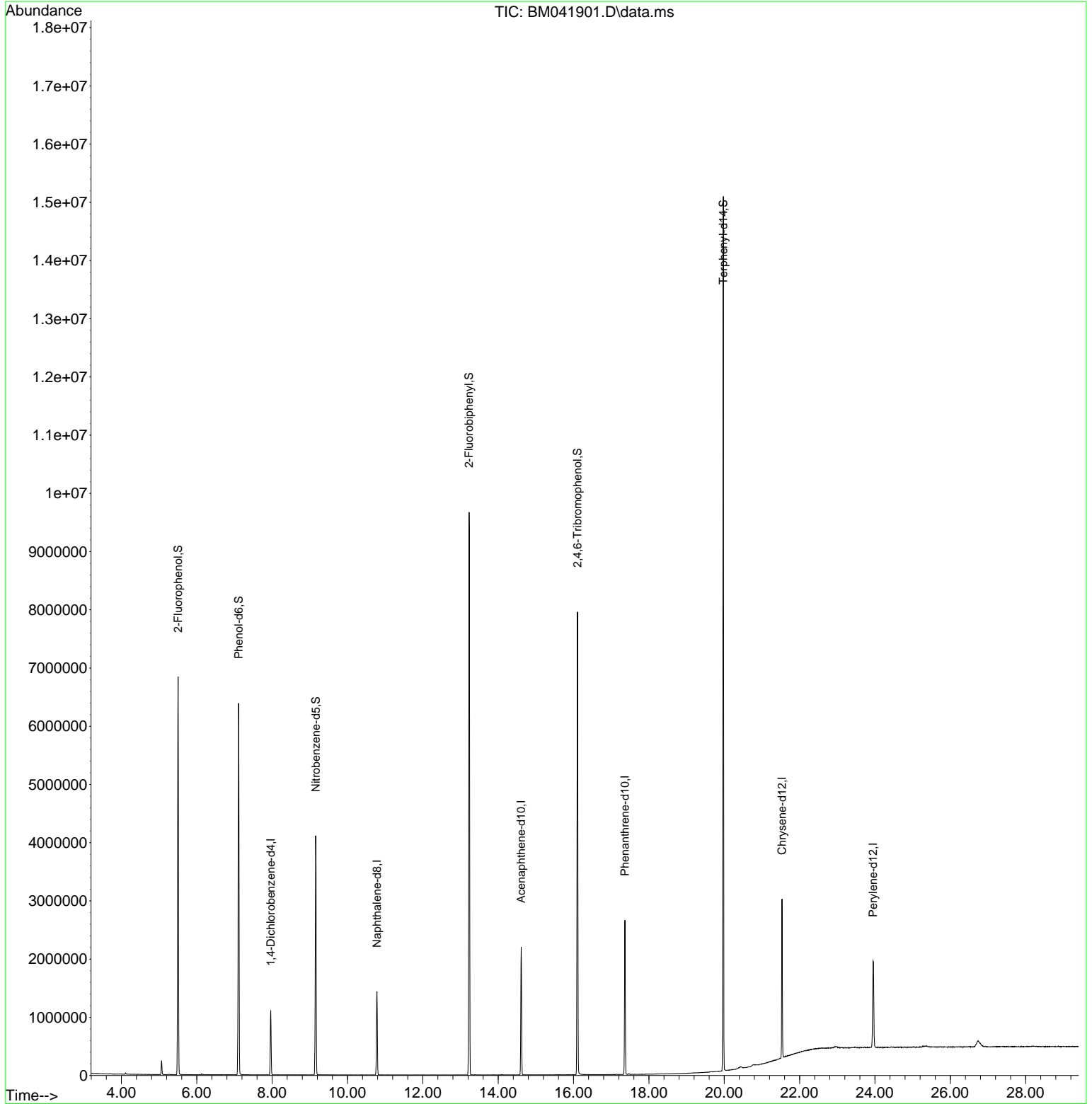
Target Compounds Qvalue

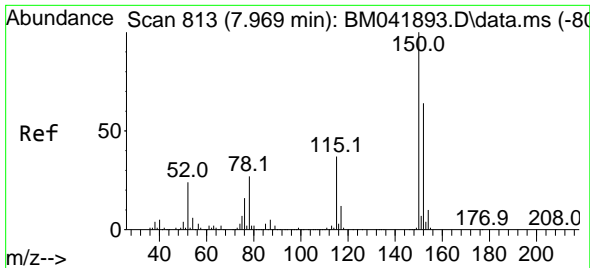
(#) = qualifier out of range (m) = manual integration (+) = signals summed

Data Path : Z:\svoasrv\HPCHEM1\BNA_M\Data\BM091923\
 Data File : BM041901.D
 Acq On : 19 Sep 2023 09:16
 Operator : MA/JU
 Sample : PB155456BL
 Misc :
 ALS Vial : 3 Sample Multiplier: 1

Instrument :
 BNA_M
ClientSampleId :
 PB155456BL

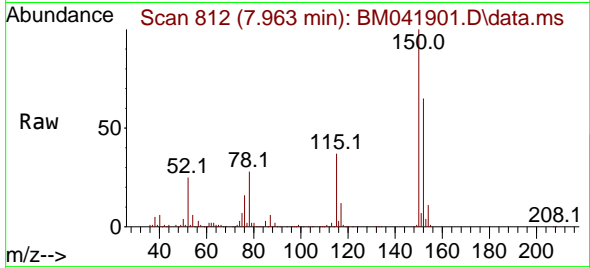
Quant Time: Sep 19 11:13:30 2023
 Quant Method : Z:\svoasrv\HPCHEM1\BNA_M\Methods\8270-BM091823.M
 Quant Title : ASP BNA STANDARDS FOR 5 POINT CALIBRATION
 QLast Update : Tue Sep 19 04:49:34 2023
 Response via : Initial Calibration



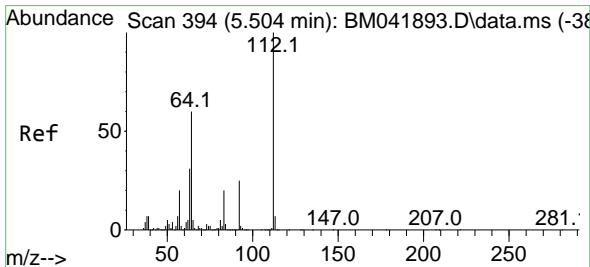
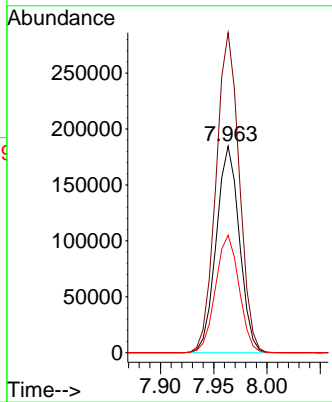
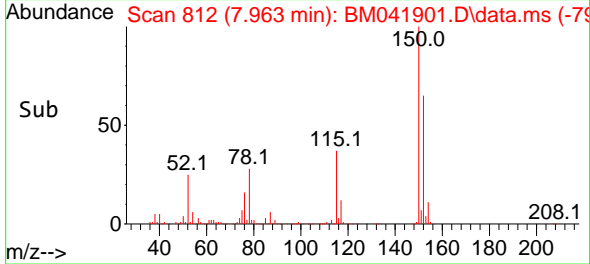


#1
 1,4-Dichlorobenzene-d4
 Concen: 20.000 ng
 RT: 7.963 min Scan# 813
 Delta R.T. -0.006 min
 Lab File: BM041901.D
 Acq: 19 Sep 2023 09:16

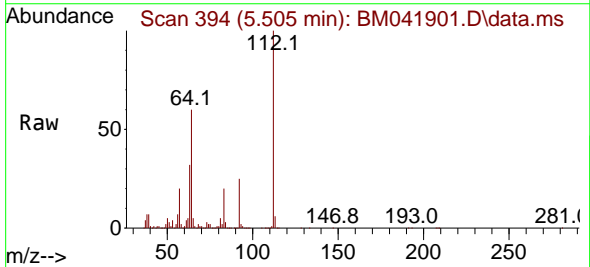
Instrument :
 BNA_M
 ClientSampleId :
 PB155456BL



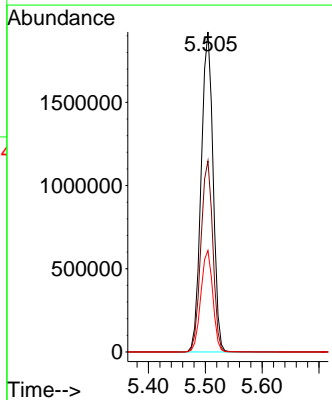
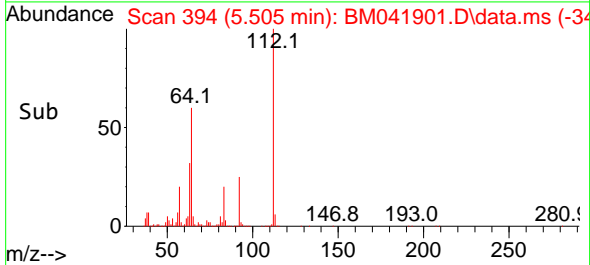
Tgt Ion:152 Resp: 278341
 Ion Ratio Lower Upper
 152 100
 150 154.9 125.9 188.9
 115 56.8 46.8 70.2

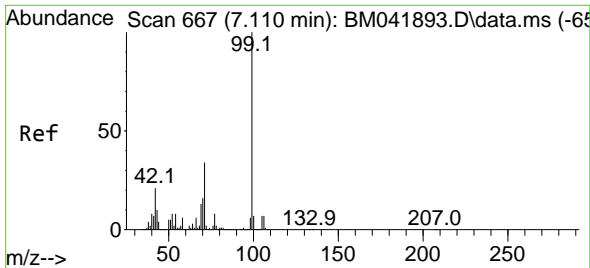


#5
 2-Fluorophenol
 Concen: 167.000 ng
 RT: 5.505 min Scan# 394
 Delta R.T. 0.000 min
 Lab File: BM041901.D
 Acq: 19 Sep 2023 09:16



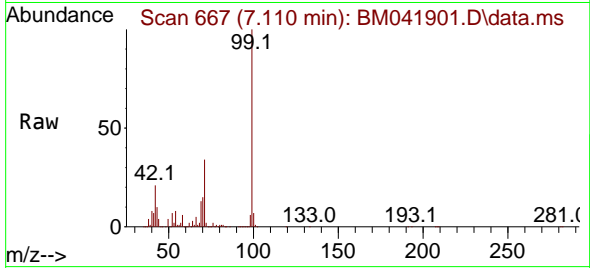
Tgt Ion:112 Resp: 2790767
 Ion Ratio Lower Upper
 112 100
 64 59.7 48.1 72.1
 63 31.7 25.0 37.6



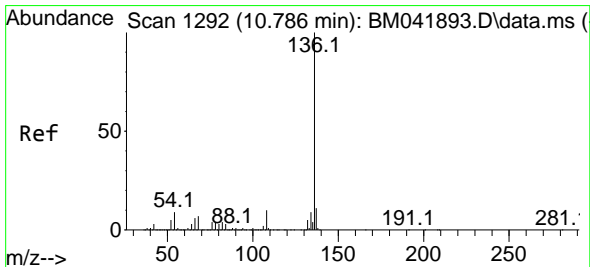
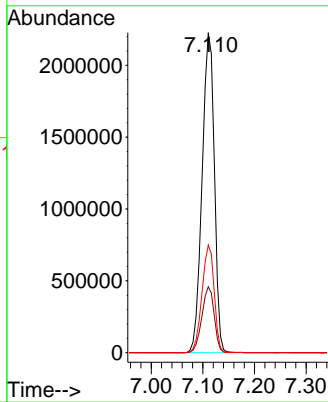
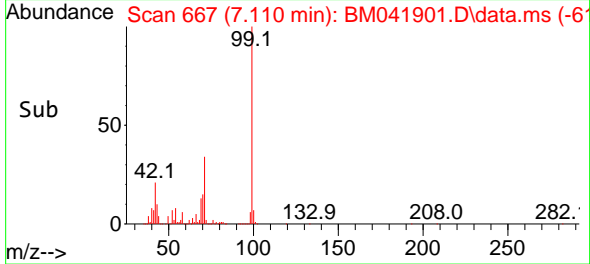


#7
 Phenol-d6
 Concen: 158.041 ng
 RT: 7.110 min Scan# 60
 Delta R.T. 0.000 min
 Lab File: BM041901.D
 Acq: 19 Sep 2023 09:16

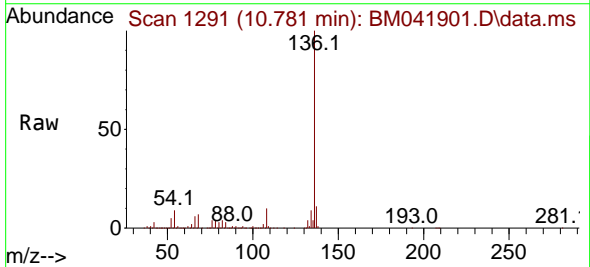
Instrument :
 BNA_M
 ClientSampleId :
 PB155456BL



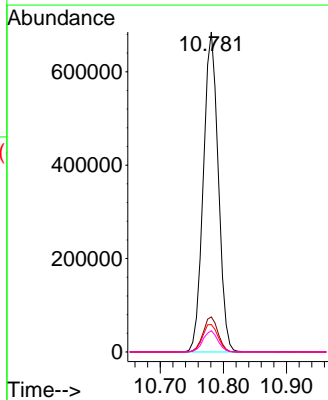
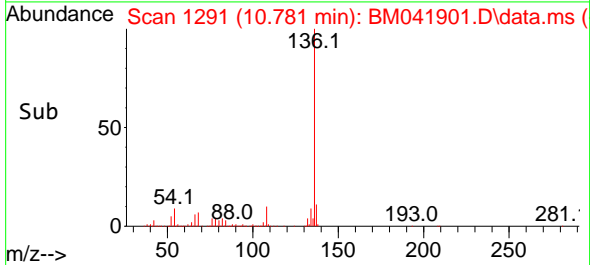
Tgt Ion: 99 Resp: 3667008
 Ion Ratio Lower Upper
 99 100
 42 20.6 16.6 25.0
 71 33.6 26.8 40.2

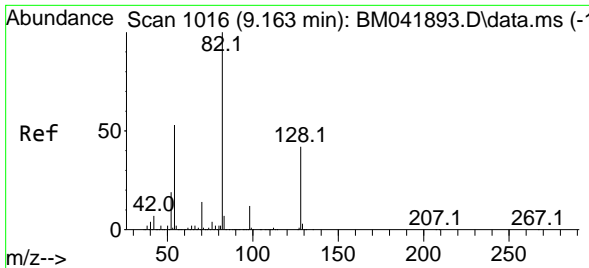


#21
 Naphthalene-d8
 Concen: 20.000 ng
 RT: 10.781 min Scan# 1291
 Delta R.T. -0.006 min
 Lab File: BM041901.D
 Acq: 19 Sep 2023 09:16



Tgt Ion: 136 Resp: 1121307
 Ion Ratio Lower Upper
 136 100
 137 11.0 8.6 13.0
 54 8.5 7.0 10.4
 68 6.6 5.3 7.9



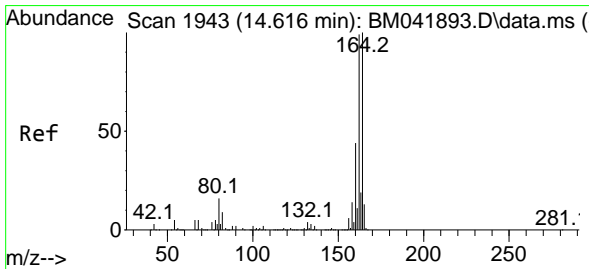
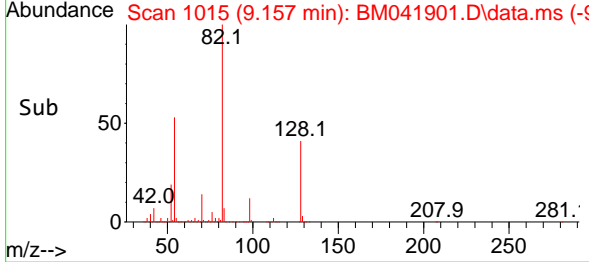
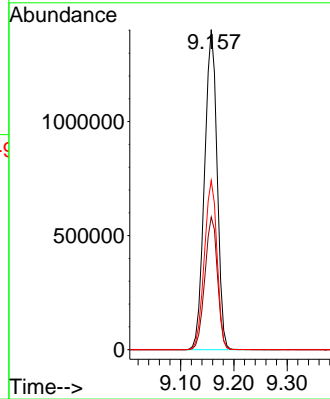
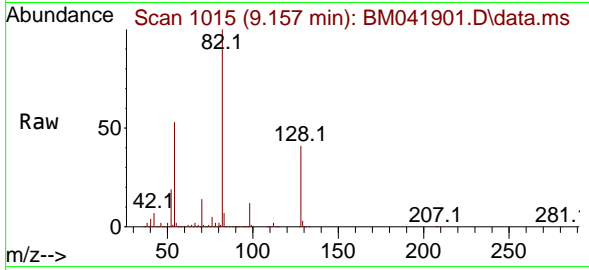


#23
 Nitrobenzene-d5
 Concen: 104.533 ng
 RT: 9.157 min Scan# 1015
 Delta R.T. -0.006 min
 Lab File: BM041901.D
 Acq: 19 Sep 2023 09:16

Instrument :
 BNA_M
 ClientSampleId :
 PB155456BL

Tgt Ion: 82 Resp: 2302131

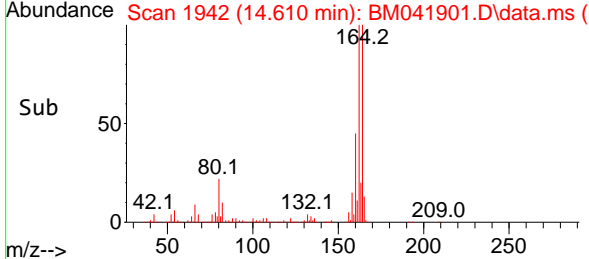
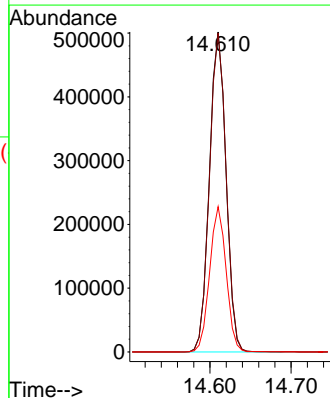
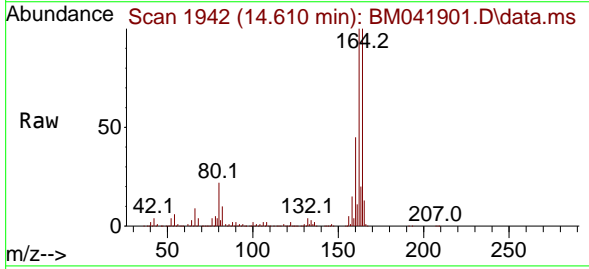
Ion	Ratio	Lower	Upper
82	100		
128	41.5	33.8	50.6
54	52.8	42.8	64.2

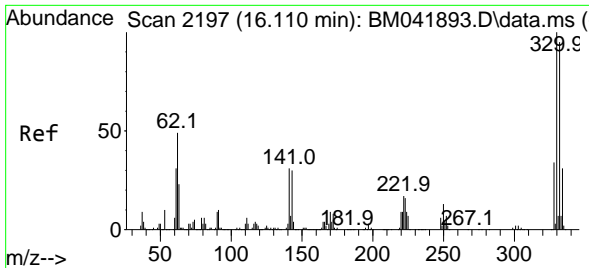


#39
 Acenaphthene-d10
 Concen: 20.000 ng
 RT: 14.610 min Scan# 1942
 Delta R.T. -0.006 min
 Lab File: BM041901.D
 Acq: 19 Sep 2023 09:16

Tgt Ion: 164 Resp: 712660

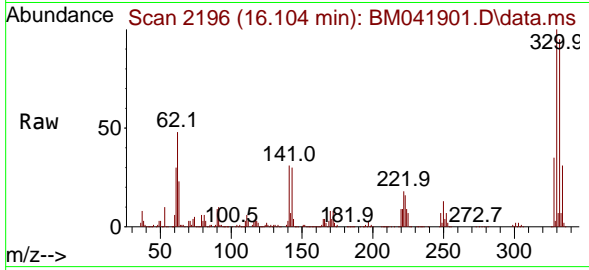
Ion	Ratio	Lower	Upper
164	100		
162	99.7	79.3	118.9
160	45.4	35.6	53.4



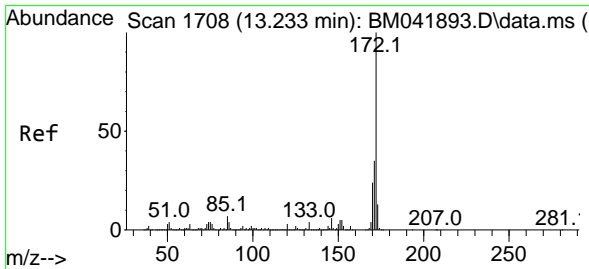
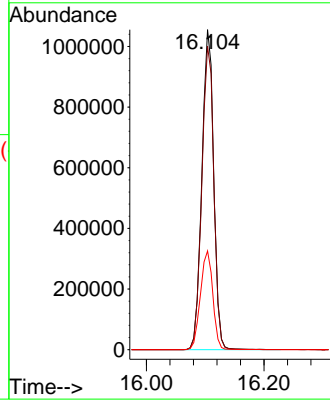
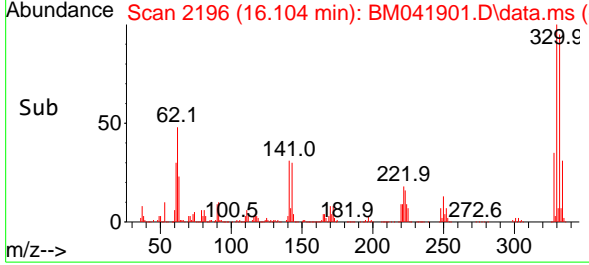


#42
 2,4,6-Tribromophenol
 Concen: 165.270 ng
 RT: 16.104 min Scan# 2197
 Delta R.T. -0.006 min
 Lab File: BM041901.D
 Acq: 19 Sep 2023 09:16

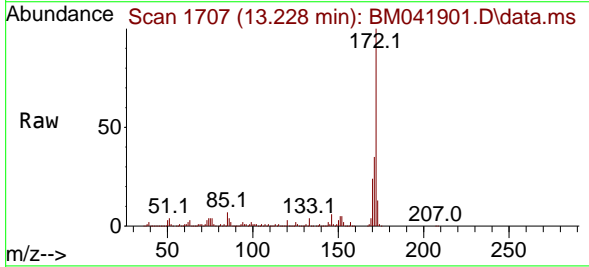
Instrument :
 BNA_M
 ClientSampleId :
 PB155456BL



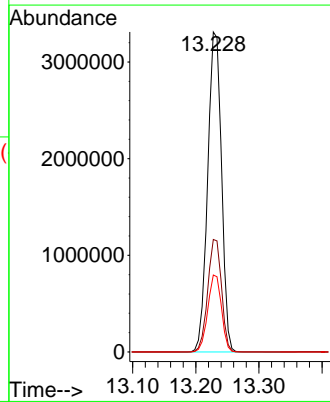
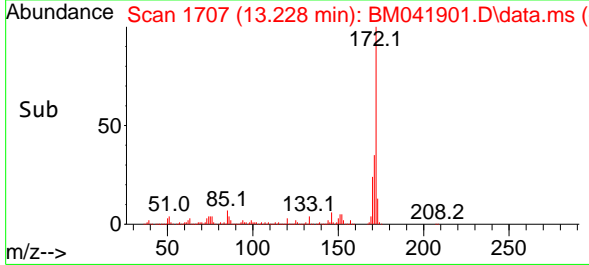
Tgt Ion:330 Resp: 1469552
 Ion Ratio Lower Upper
 330 100
 332 96.6 77.8 116.6
 141 32.3 27.0 40.4

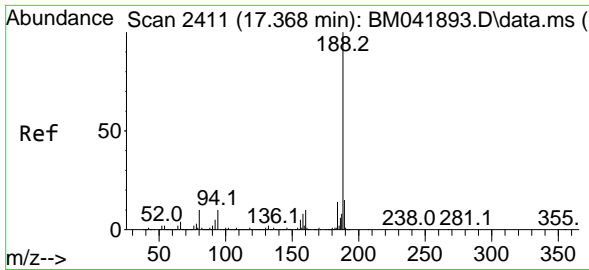


#45
 2-Fluorobiphenyl
 Concen: 103.456 ng
 RT: 13.228 min Scan# 1707
 Delta R.T. -0.006 min
 Lab File: BM041901.D
 Acq: 19 Sep 2023 09:16



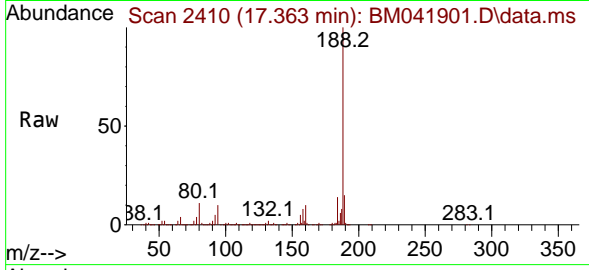
Tgt Ion:172 Resp: 5023195
 Ion Ratio Lower Upper
 172 100
 171 35.2 28.2 42.4
 170 24.1 19.1 28.7



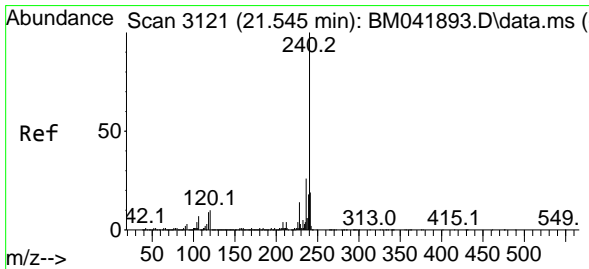
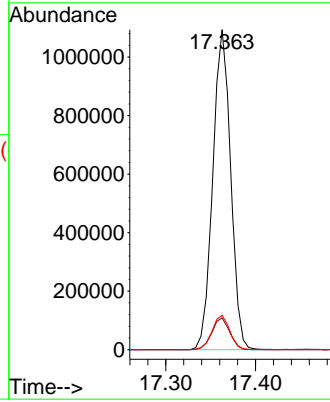
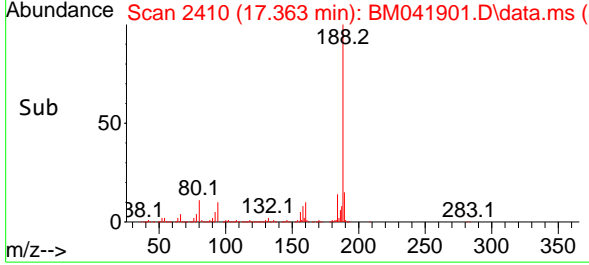


#64
 Phenanthrene-d10
 Concen: 20.000 ng
 RT: 17.363 min Scan# 24
 Delta R.T. -0.006 min
 Lab File: BM041901.D
 Acq: 19 Sep 2023 09:16

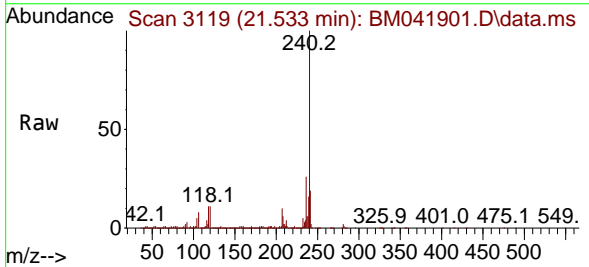
Instrument :
 BNA_M
 ClientSampleId :
 PB155456BL



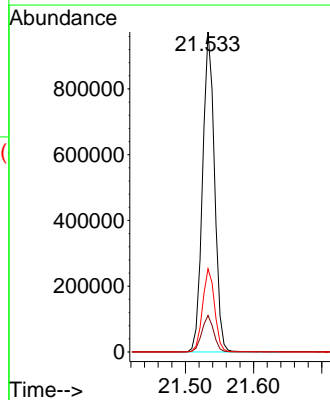
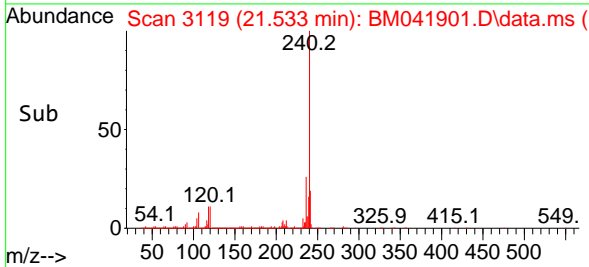
Tgt Ion:188 Resp: 1511602
 Ion Ratio Lower Upper
 188 100
 94 10.0 7.6 11.4
 80 10.7 8.3 12.5

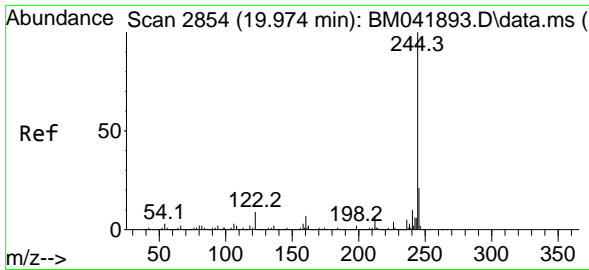


#76
 Chrysene-d12
 Concen: 20.000 ng
 RT: 21.533 min Scan# 3119
 Delta R.T. -0.012 min
 Lab File: BM041901.D
 Acq: 19 Sep 2023 09:16



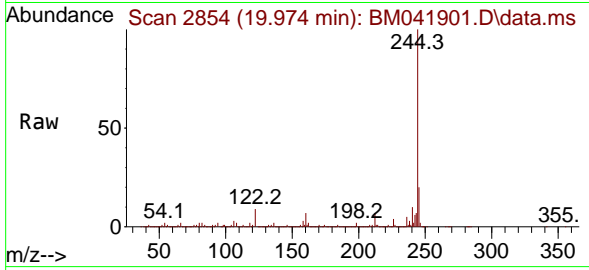
Tgt Ion:240 Resp: 1186864
 Ion Ratio Lower Upper
 240 100
 120 11.4 8.1 12.1
 236 26.0 20.7 31.1



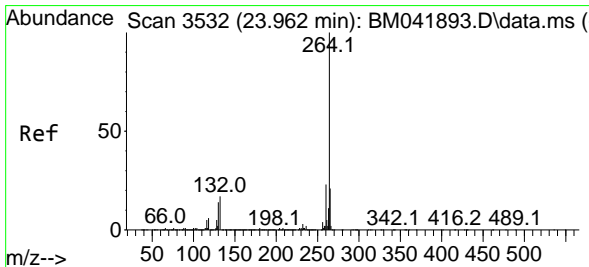
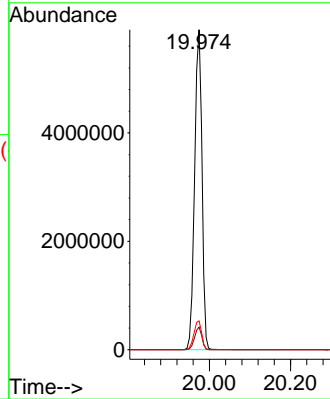
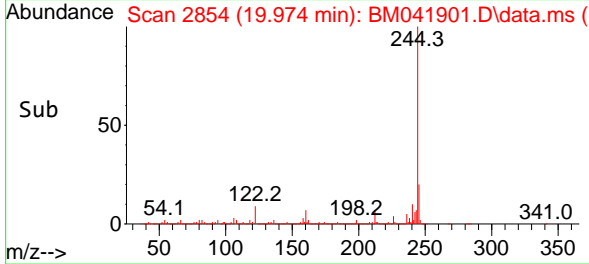


#79
 Terphenyl-d14
 Concen: 114.127 ng
 RT: 19.974 min Scan# 21
 Delta R.T. 0.000 min
 Lab File: BM041901.D
 Acq: 19 Sep 2023 09:16

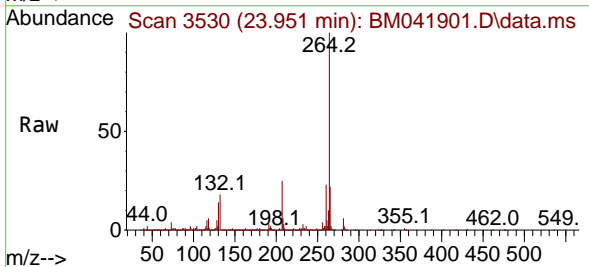
Instrument :
 BNA_M
 ClientSampleId :
 PB155456BL



Tgt Ion:244 Resp: 7437196
 Ion Ratio Lower Upper
 244 100
 212 7.1 5.7 8.5
 122 9.0 7.4 11.0



#86
 Perylene-d12
 Concen: 20.000 ng
 RT: 23.951 min Scan# 3530
 Delta R.T. -0.012 min
 Lab File: BM041901.D
 Acq: 19 Sep 2023 09:16



Tgt Ion:264 Resp: 1170023
 Ion Ratio Lower Upper
 264 100
 260 23.0 18.6 28.0
 265 21.9 17.0 25.6

