

Data Path : Z:\svoasrv\HPCHEM1\BNA_M\Data\BM092121\
 Data File : BM032122.D
 Acq On : 21 Sep 2021 20:06
 Operator : CG/JU
 Sample : SSTD04028
 Misc :
 ALS Vial : 5 Sample Multiplier: 1

Instrument :
 BNA_M
 ClientSampleId :
 SSTD040028

Quant Time: Sep 22 01:53:48 2021
 Quant Method : Z:\SVOASRV\HPCHEM1\BNA_M\METHODS\SFAM-EPA-BM092121.M
 Quant Title : SVOA CALIBRATION
 QLast Update : Wed Sep 22 01:45:17 2021
 Response via : Initial Calibration

Compound	R.T.	QIon	Response	Conc	Units	Dev(Min)
Internal Standards						
1) 1,4-Dichlorobenzene-d4	7.675	152	147958	20.000	ng/ul	0.00
20) Naphthalene-d8	10.469	136	705477	20.000	ng/ul	0.00
38) Acenaphthene-d10	14.321	164	485054	20.000	ng/ul	0.00
64) Phenanthrene-d10	17.045	188	1063598	20.000	ng/ul	0.00
79) Chrysene-d12	21.203	240	1100867	20.000	ng/ul	0.00
88) Perylene-d12	23.374	264	1237666	20.000	ng/ul	0.00
System Monitoring Compounds						
3) 1,4-Dioxane-d8	2.981	96	54704	17.059	ng/uL	0.00
4) Pyridine-d5	3.410	84	469022	51.506	ng/ul	0.00
7) Phenol-d5	6.851	99	562969	45.884	ng/ul	0.00
9) Bis-(2-Chloroethyl)eth...	6.992	67	337997	47.613	ng/ul	0.00
11) 2-Chlorophenol-d4	7.210	132	399539	42.318	ng/ul	0.00
15) 4-Methylphenol-d8	8.398	113	454658	43.192	ng/ul	0.00
21) Nitrobenzene-d5	8.828	128	170633	33.300	ng/ul	0.00
24) 2-Nitrophenol-d4	9.551	143	159303	26.270	ng/ul	0.00
28) 2,4-Dichlorophenol-d3	10.092	165	428755	35.240	ng/ul	0.00
31) 4-Chloroaniline-d4	10.598	131	632629	36.861	ng/ul	0.00
46) Dimethylphthalate-d6	13.721	166	1390575	37.887	ng/ul	0.00
49) Acenaphthylene-d8	14.010	160	1733001	39.870	ng/ul	0.00
54) 4-Nitrophenol-d4	14.516	143	229083	34.483	ng/ul	0.00
60) Fluorene-d10	15.310	176	1144736	35.481	ng/ul	0.00
65) 4,6-Dinitro-2-methylph...	15.421	200	154133	21.090	ng/ul	0.00
73) Anthracene-d10	17.145	188	1823947	36.130	ng/ul	0.00
81) Pyrene-d10	19.427	212	2108659	40.894	ng/ul	0.00
92) Benzo(a)pyrene-d12	23.244	264	2475651	38.059	ng/ul	0.00
Target Compounds						
2) 1,4-Dioxane	3.022	88	60981	15.773	ng/uL	94
5) Pyridine	3.428	79	458682	48.995	ng/ul	86
6) Benzaldehyde	6.793	77	375245	67.559	ng/ul	92
8) Phenol	6.881	94	569529	46.130	ng/ul	98
10) Bis(2-Chloroethyl)ether	7.087	93	444488	47.269	ng/ul	95
12) 2-Chlorophenol	7.240	128	410563	43.547	ng/ul	98
13) 2-Methylphenol	8.128	108	439348	46.153	ng/ul	97
14) 2,2'-oxybis(1-Chloropr...	8.210	45	577995	47.298	ng/ul#	94
16) Acetophenone	8.487	105	702464	42.608	ng/ul	96
17) N-Nitroso-di-n-propyla...	8.481	70	388037	48.244	ng/ul#	86
18) 4-Methylphenol	8.457	108	478428	45.259	ng/ul	95
19) Hexachloroethane	8.763	117	167855	41.562	ng/ul	93
22) Nitrobenzene	8.869	77	484138	37.425	ng/ul	97
23) Isophorone	9.386	82	1143132	48.012	ng/ul	98
25) 2-Nitrophenol	9.581	139	195025	30.872	ng/ul	96
26) 2,4-Dimethylphenol	9.657	107	555327	43.186	ng/ul	97
27) Bis(2-Chloroethoxy)met...	9.875	93	652315	46.219	ng/ul	99
29) 2,4-Dichlorophenol	10.122	162	415129	35.871	ng/ul	97
30) Naphthalene	10.516	128	1402167	39.702	ng/ul	99
32) 4-Chloroaniline	10.622	127	647629	37.828	ng/ul	100
33) Hexachlorobutadiene	10.828	225	263295	34.295	ng/ul	99
34) Caprolactam	11.345	113	179788	46.607	ng/ul	92
35) 4-Chloro-3-methylphenol	11.763	107	525858	43.330	ng/ul	92
36) 2-Methylnaphthalene	12.133	142	992074	35.627	ng/ul	97

Data Path : Z:\svoasrv\HPCHEM1\BNA_M\Data\BM092121\
 Data File : BM032122.D
 Acq On : 21 Sep 2021 20:06
 Operator : CG/JU
 Sample : SSTD04028
 Misc :
 ALS Vial : 5 Sample Multiplier: 1

Instrument :
 BNA_M
 ClientSampleId :
 SSTD040028

Quant Time: Sep 22 01:53:48 2021
 Quant Method : Z:\SVOASRV\HPCHEM1\BNA_M\METHODS\SFAM-EPA-BM092121.M
 Quant Title : SVOA CALIBRATION
 QLast Update : Wed Sep 22 01:45:17 2021
 Response via : Initial Calibration

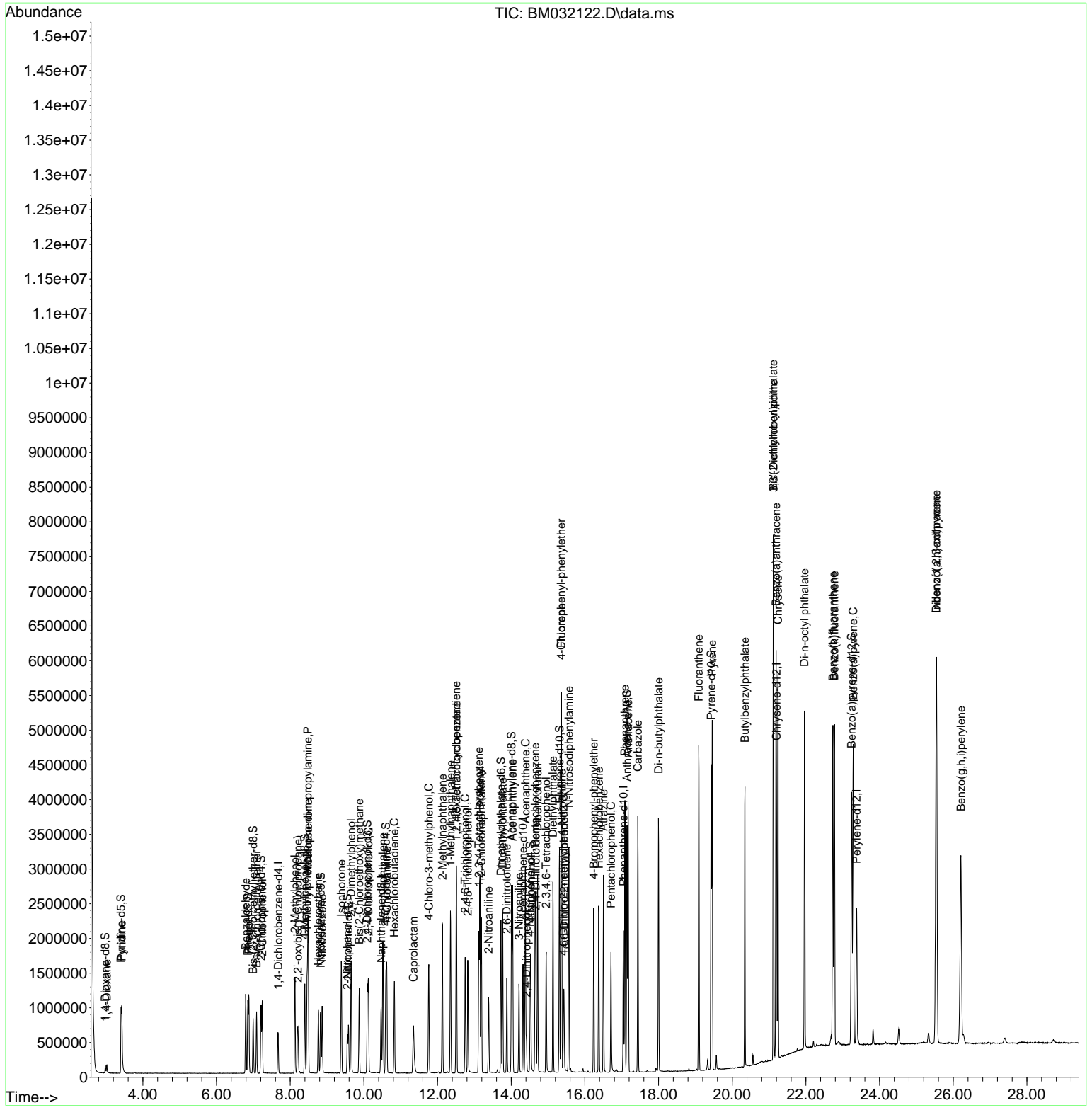
Compound	R.T.	QIon	Response	Conc	Units	Dev(Min)
37) 1-Methylnaphthalene	12.351	142	1009843	35.605	ng/ul	97
39) 1,2,4,5-Tetrachloroben...	12.516	216	519974	37.345	ng/ul	98
40) Hexachlorocyclopentadiene	12.510	237	312166	41.653	ng/ul	99
41) 2,4,6-Trichlorophenol	12.751	196	345886	37.081	ng/ul	98
42) 2,4,5-Trichlorophenol	12.822	196	375161	37.036	ng/ul	98
43) 1,1'-Biphenyl	13.151	154	1347251	39.487	ng/ul	98
44) 2-Chloronaphthalene	13.192	162	1020235	37.744	ng/ul	96
45) 2-Nitroaniline	13.386	65	261765	35.150	ng/ul	95
47) Dimethylphthalate	13.769	163	1369789	38.009	ng/ul	100
48) 2,6-Dinitrotoluene	13.880	165	218832	30.779	ng/ul	93
50) Acenaphthylene	14.039	152	1748040	43.706	ng/ul	99
51) 3-Nitroaniline	14.210	138	245992	36.972	ng/ul#	90
52) Acenaphthene	14.386	153	1142643	39.337	ng/ul	99
53) 2,4-Dinitrophenol	14.416	184	93274	18.763	ng/ul#	90
55) 4-Nitrophenol	14.533	109	217555	35.472	ng/ul	92
56) Dibenzofuran	14.716	168	1608630	37.551	ng/ul	96
57) 2,4-Dinitrotoluene	14.668	165	331217	31.061	ng/ul#	99
58) 2,3,4,6-Tetrachlorophenol	14.951	232	313454	34.470	ng/ul#	95
59) Diethylphthalate	15.133	149	1437429	39.025	ng/ul	99
61) Fluorene	15.363	166	1280833	35.336	ng/ul	99
62) 4-Chlorophenyl-phenyle...	15.357	204	629300	33.899	ng/ul	94
63) 4-Nitroaniline	15.374	138	259296	43.506	ng/ul#	86
66) 4,6-Dinitro-2-methylph...	15.433	198	164338	23.126	ng/ul	94
67) N-Nitrosodiphenylamine	15.568	169	1163795	38.102	ng/ul	99
68) 4-Bromophenyl-phenylether	16.245	248	398236	36.538	ng/ul	96
69) Hexachlorobenzene	16.380	284	449863	35.549	ng/ul	98
70) Atrazine	16.504	200	471164	40.941	ng/ul	96
71) Pentachlorophenol	16.710	266	265523	32.086	ng/ul	98
72) Phenanthrene	17.086	178	2151527	37.037	ng/ul	99
74) Anthracene	17.174	178	2162621	36.376	ng/ul	99
75) 1,2,3,4-Tetrachloroben...	13.122	216	556615	40.216	ng/uL	98
76) Pentachlorobenzene	14.651	250	547766	37.725	ng/uL	99
77) Carbazole	17.439	167	2076272	38.159	ng/ul	97
78) Di-n-butylphthalate	17.998	149	2533227	40.629	ng/ul	99
80) Fluoranthene	19.092	202	2640909	42.149	ng/ul	97
82) Pyrene	19.456	202	2642809	39.839	ng/ul	97
83) Butylbenzylphthalate	20.345	149	1127185	43.274	ng/ul	97
84) 3,3'-Dichlorobenzidine	21.121	252	981678	39.610	ng/ul	97
85) Benzo(a)anthracene	21.192	228	2683286	39.185	ng/ul	100
86) Bis(2-ethylhexyl)phtha...	21.115	149	1664267	39.618	ng/ul	98
87) Chrysene	21.245	228	2571457	39.041	ng/ul	98
89) Di-n-octyl phthalate	21.962	149	3026901	35.848	ng/ul	100
90) Benzo(b)fluoranthene	22.733	252	2901534	36.796	ng/ul	99
91) Benzo(k)fluoranthene	22.774	252	2739651	35.888	ng/ul	100
93) Benzo(a)pyrene	23.286	252	2851440	40.044	ng/ul	100
94) Indeno(1,2,3-cd)pyrene	25.544	276	3356352	36.828	ng/ul	97
95) Dibenzo(a,h)anthracene	25.544	278	2859104	37.302	ng/ul	99
96) Benzo(g,h,i)perylene	26.209	276	2913551	38.607	ng/ul	98

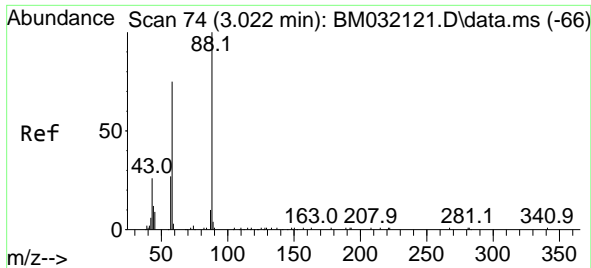
(#) = qualifier out of range (m) = manual integration (+) = signals summed

Data Path : Z:\svoasrv\HPCHEM1\BNA_M\Data\BM092121\
 Data File : BM032122.D
 Acq On : 21 Sep 2021 20:06
 Operator : CG/JU
 Sample : SST040028
 Misc :
 ALS Vial : 5 Sample Multiplier: 1

Instrument :
 BNA_M
 Client Sample Id :
 SST040028

Quant Time: Sep 22 01:53:48 2021
 Quant Method : Z:\SVOASRV\HPCHEM1\BNA_M\METHODS\SFAM-EPA-BM092121.M
 Quant Title : SVOA CALIBRATION
 QLast Update : Wed Sep 22 01:45:17 2021
 Response via : Initial Calibration

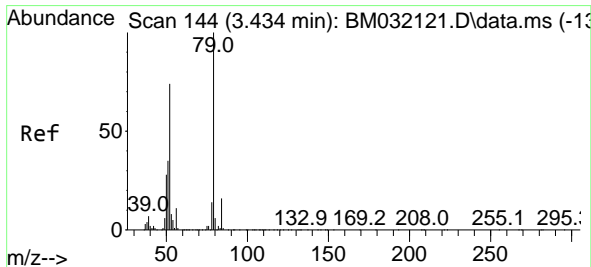
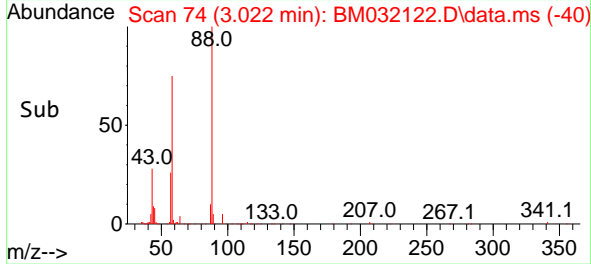
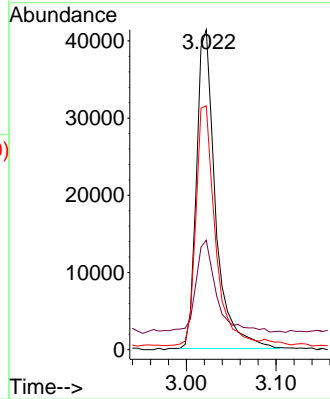
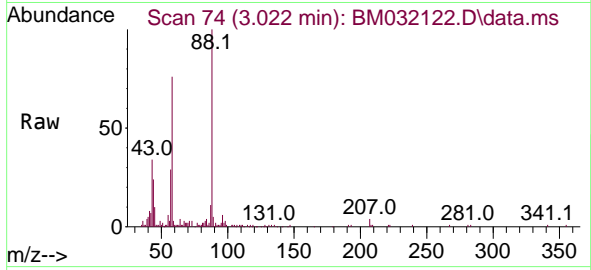




#2
 1,4-Dioxane
 Concen: 15.773 ng/uL
 RT: 3.022 min Scan# 74
 Delta R.T. -0.000 min
 Lab File: BM032122.D
 Acq: 21 Sep 2021 20:06

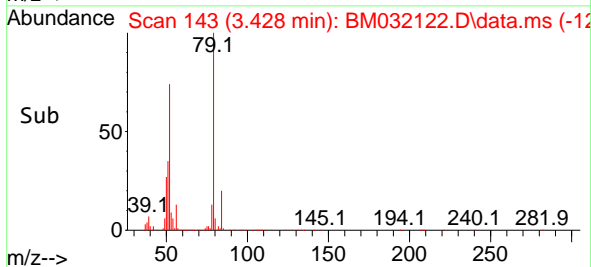
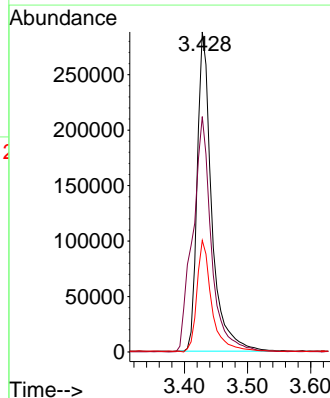
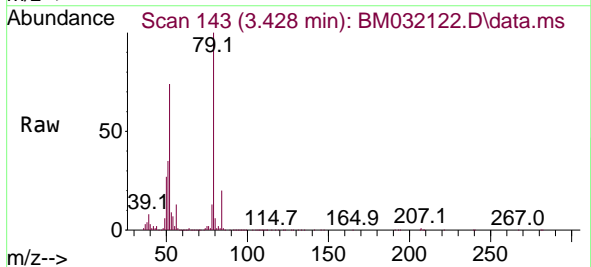
Instrument :
 BNA_M
 ClientSampled :
 SSTD040028

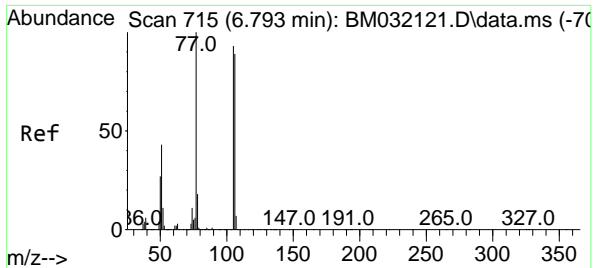
Tgt Ion	Resp	Lower	Upper
88	60981		
43	34.2	31.5	47.3
58	76.2	64.1	96.1



#5
 Pyridine
 Concen: 48.995 ng/uL
 RT: 3.428 min Scan# 143
 Delta R.T. -0.006 min
 Lab File: BM032122.D
 Acq: 21 Sep 2021 20:06

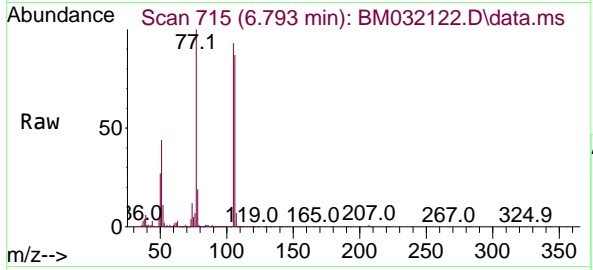
Tgt Ion	Resp	Lower	Upper
79	458682		
52	73.5	69.9	104.9
51	34.8	33.8	50.6





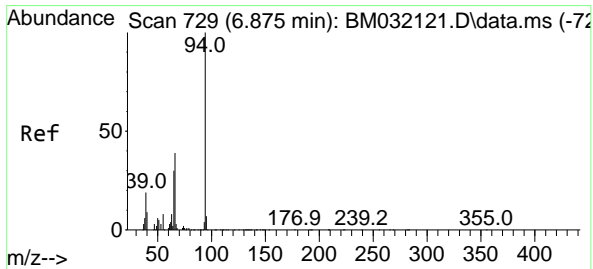
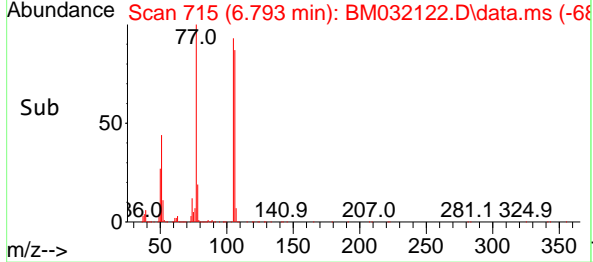
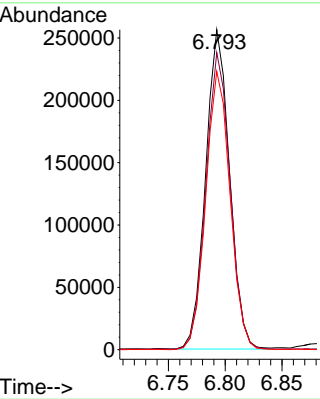
#6
Benzaldehyde
Concen: 67.559 ng/u1
RT: 6.793 min Scan# 715
Delta R.T. -0.000 min
Lab File: BM032122.D
Acq: 21 Sep 2021 20:06

Instrument :
BNA_M
ClientSampleId :
SSTD040028

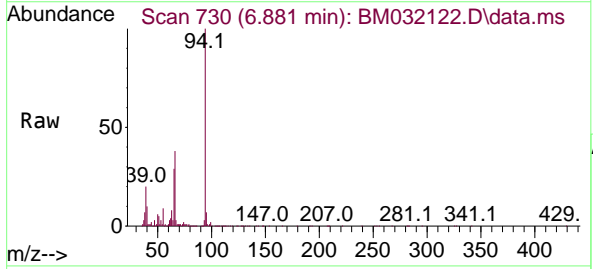


Tgt Ion: 77 Resp: 375245

Ion	Ratio	Lower	Upper
77	100		
105	92.9	82.2	123.4
106	86.9	75.0	112.4

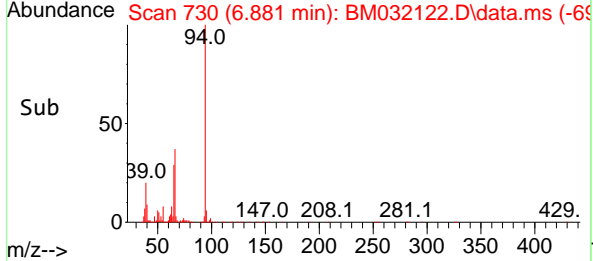
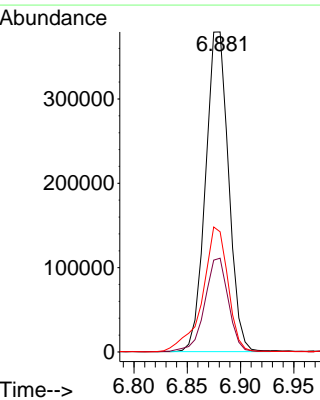


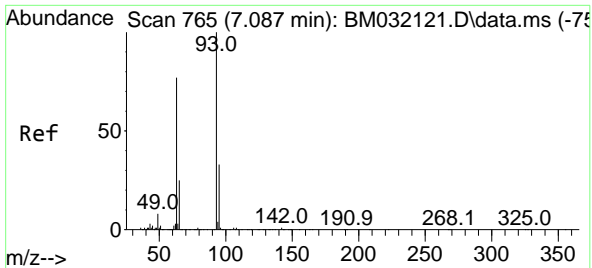
#8
Phenol
Concen: 46.130 ng/u1
RT: 6.881 min Scan# 730
Delta R.T. 0.006 min
Lab File: BM032122.D
Acq: 21 Sep 2021 20:06



Tgt Ion: 94 Resp: 569529

Ion	Ratio	Lower	Upper
94	100		
65	29.3	24.2	36.4
66	37.5	31.4	47.0

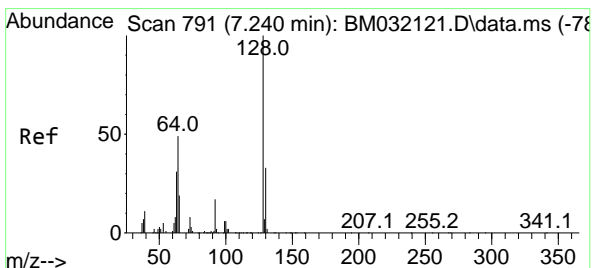
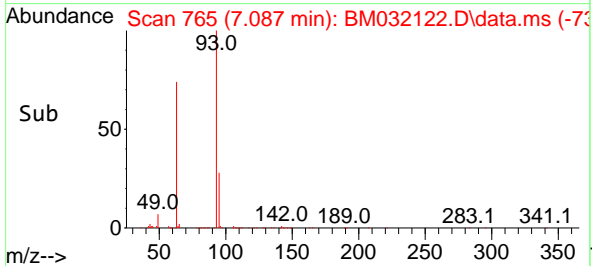
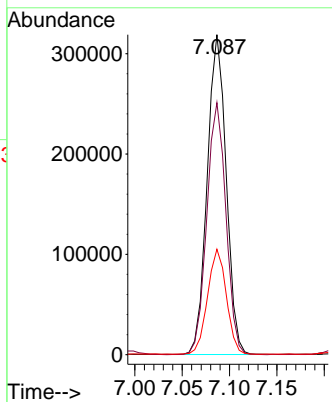
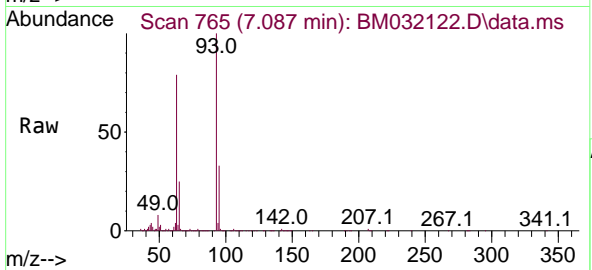




#10
 Bis(2-Chloroethyl)ether
 Concen: 47.269 ng/ul
 RT: 7.087 min Scan# 765
 Delta R.T. -0.000 min
 Lab File: BM032122.D
 Acq: 21 Sep 2021 20:06

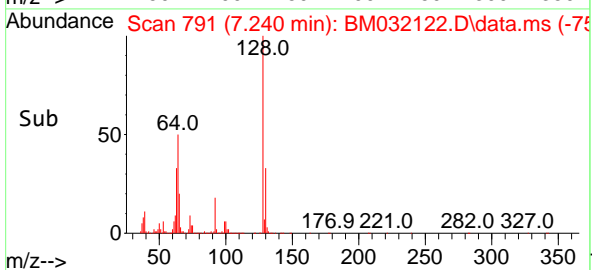
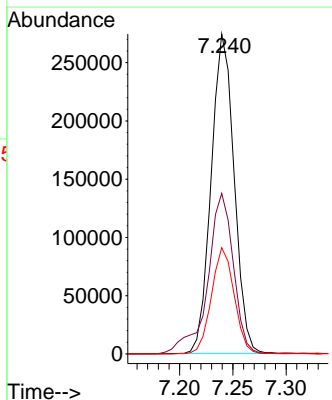
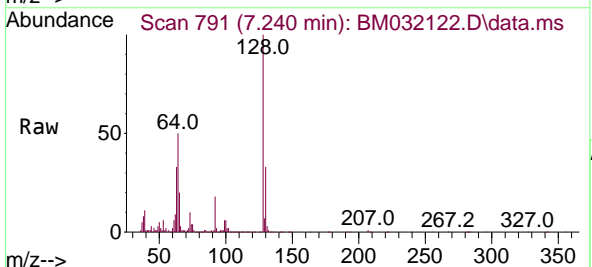
Instrument :
 BNA_M
 ClientSampleID :
 SSTD040028

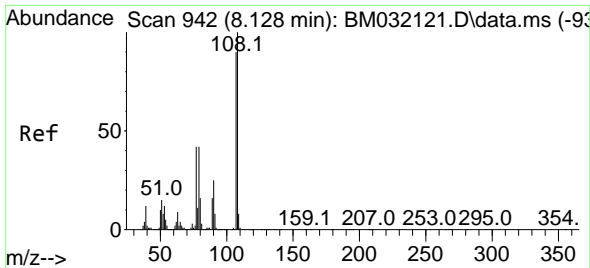
Tgt Ion:	93	63	95	Resp:	444488	Lower	Upper
Ion Ratio	100	78.7	33.0			68.0	102.0
						25.8	38.6



#12
 2-Chlorophenol
 Concen: 43.547 ng/ul
 RT: 7.240 min Scan# 791
 Delta R.T. -0.000 min
 Lab File: BM032122.D
 Acq: 21 Sep 2021 20:06

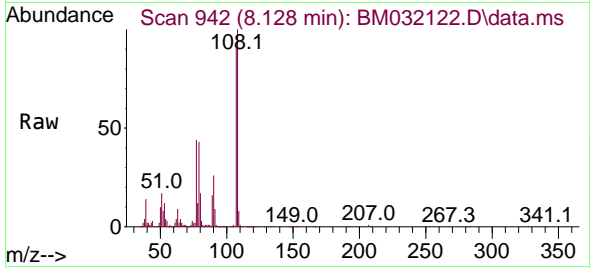
Tgt Ion:	128	64	130	Resp:	410563	Lower	Upper
Ion Ratio	100	50.2	33.2			39.2	58.8
						25.3	37.9



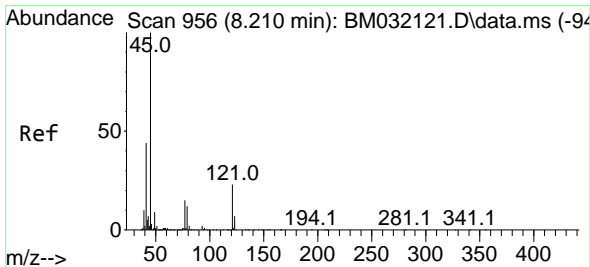
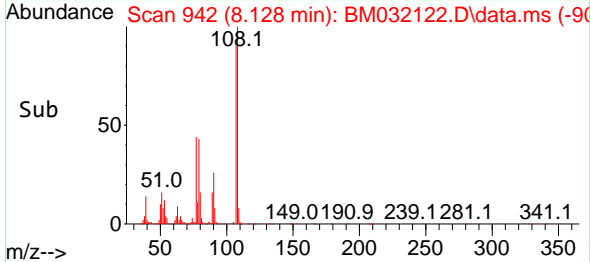
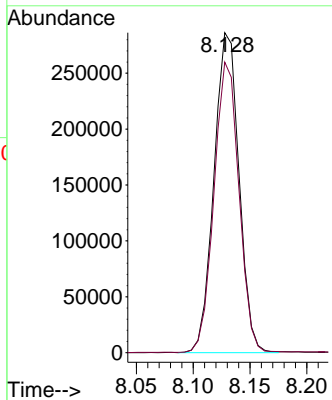


#13
 2-Methylphenol
 Concen: 46.153 ng/ul
 RT: 8.128 min Scan# 942
 Delta R.T. -0.000 min
 Lab File: BM032122.D
 Acq: 21 Sep 2021 20:06

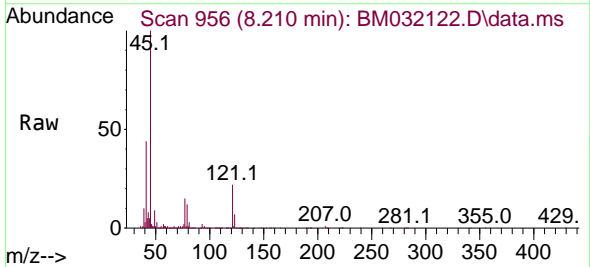
Instrument :
 BNA_M
 ClientSampled :
 SSTD040028



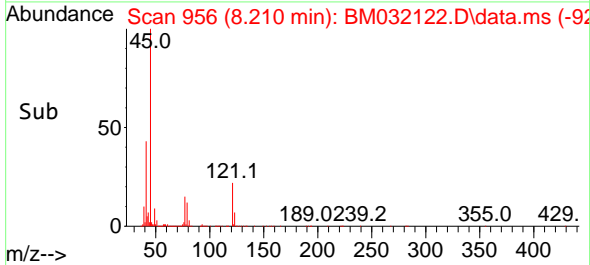
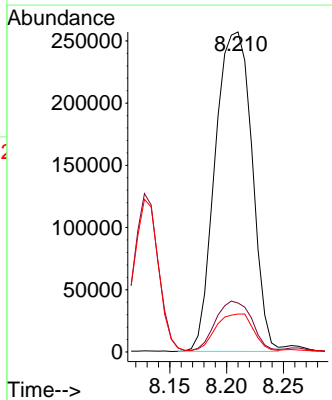
Tgt Ion:108 Resp: 439348
 Ion Ratio Lower Upper
 108 100
 107 90.8 70.6 105.8

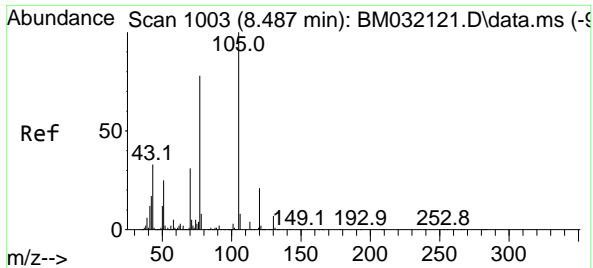


#14
 2,2'-oxybis(1-Chloropropane)
 Concen: 47.298 ng/ul
 RT: 8.210 min Scan# 956
 Delta R.T. -0.000 min
 Lab File: BM032122.D
 Acq: 21 Sep 2021 20:06



Tgt Ion: 45 Resp: 577995
 Ion Ratio Lower Upper
 45 100
 77 15.3 10.2 15.4
 79 11.9 7.8 11.8#



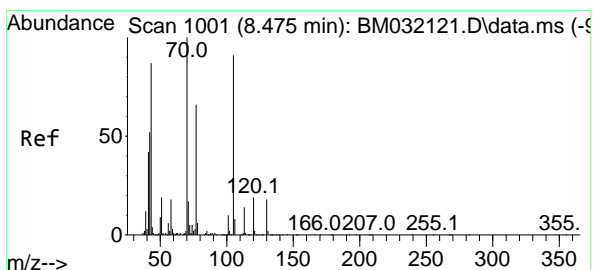
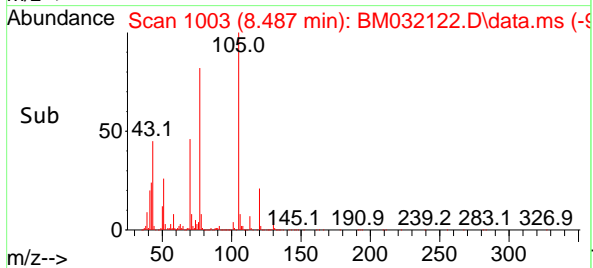
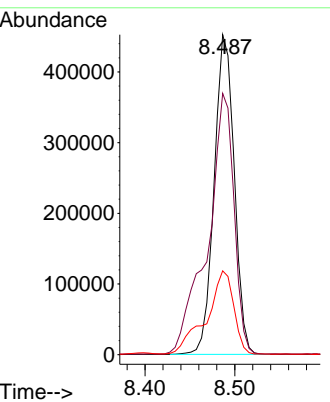
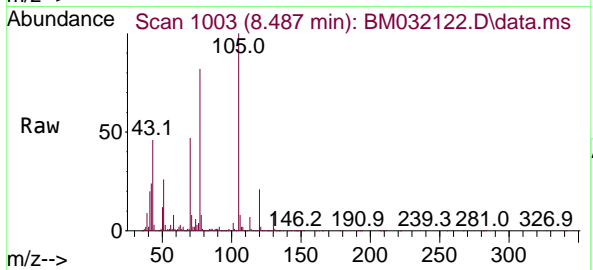


#16
 Acetophenone
 Concen: 42.608 ng/uI
 RT: 8.487 min Scan# 1003
 Delta R.T. -0.000 min
 Lab File: BM032122.D
 Acq: 21 Sep 2021 20:06

Instrument :
 BNA_M
ClientSampled :
 SSTD040028

Tgt Ion:105 Resp: 702464

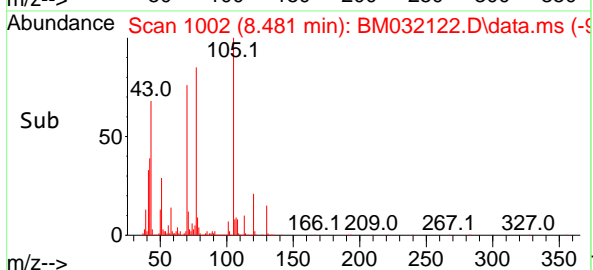
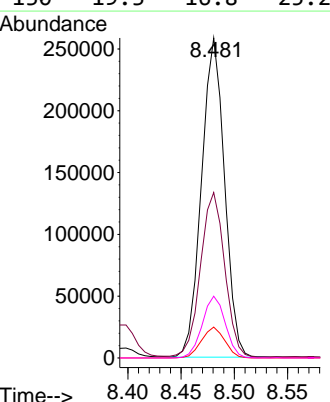
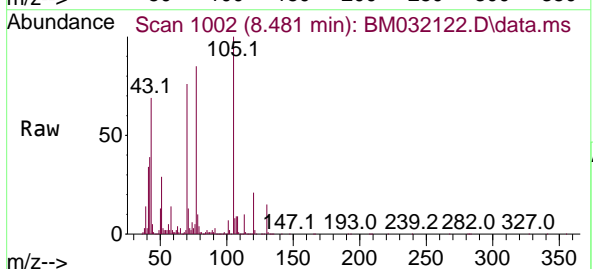
Ion	Ratio	Lower	Upper
105	100		
77	81.7	63.7	95.5
51	26.2	25.4	38.0

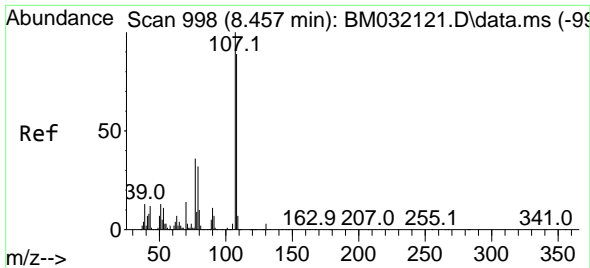


#17
 N-Nitroso-di-n-propylamine
 Concen: 48.244 ng/uI
 RT: 8.481 min Scan# 1002
 Delta R.T. 0.006 min
 Lab File: BM032122.D
 Acq: 21 Sep 2021 20:06

Tgt Ion: 70 Resp: 388037

Ion	Ratio	Lower	Upper
70	100		
42	51.7	53.4	80.0#
101	9.7	7.4	11.0
130	19.3	16.8	25.2

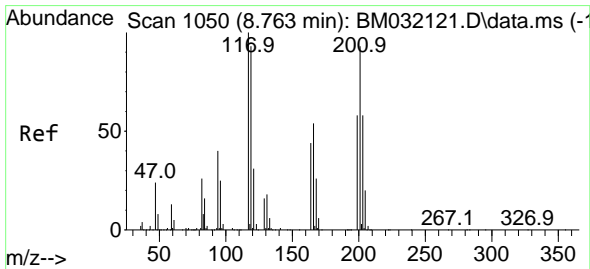
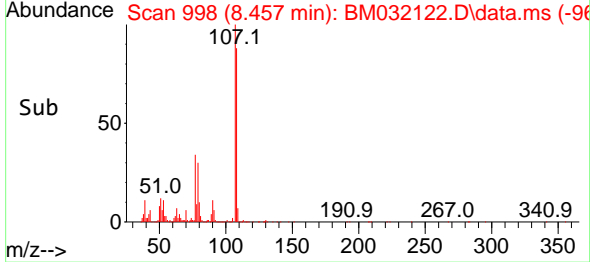
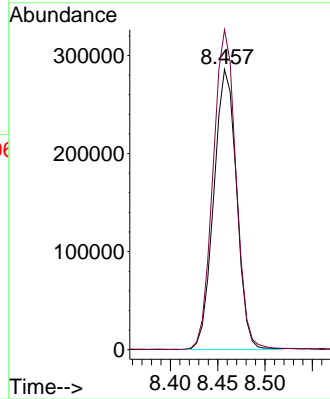
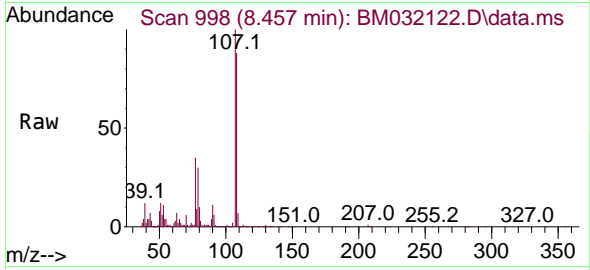




#18
 4-Methylphenol
 Concen: 45.259 ng/uI
 RT: 8.457 min Scan# 998
 Delta R.T. -0.000 min
 Lab File: BM032122.D
 Acq: 21 Sep 2021 20:06

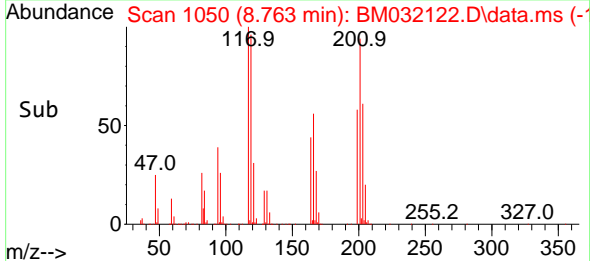
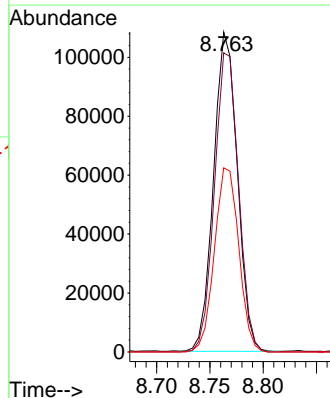
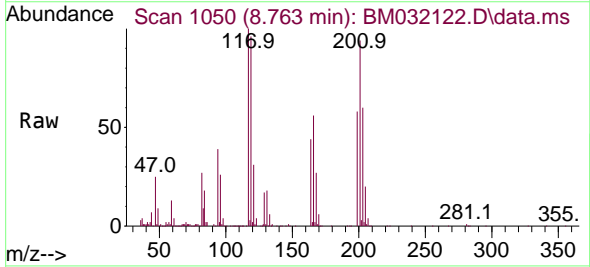
Instrument :
 BNA_M
 ClientSampled :
 SSTD040028

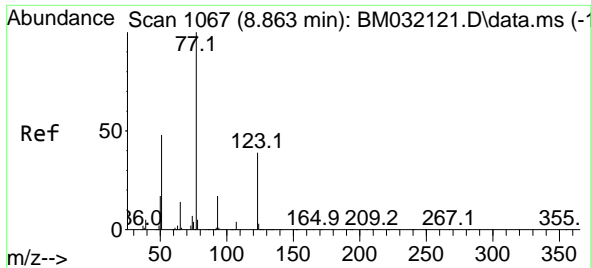
Tgt Ion:108 Resp: 478428
 Ion Ratio Lower Upper
 108 100
 107 114.2 87.0 130.6



#19
 Hexachloroethane
 Concen: 41.562 ng/uI
 RT: 8.763 min Scan# 1050
 Delta R.T. -0.000 min
 Lab File: BM032122.D
 Acq: 21 Sep 2021 20:06

Tgt Ion:117 Resp: 167855
 Ion Ratio Lower Upper
 117 100
 201 93.5 80.1 120.1
 199 57.6 50.8 76.2

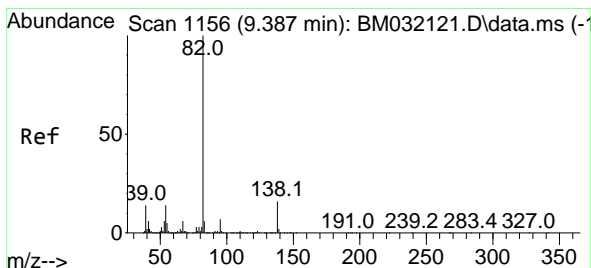
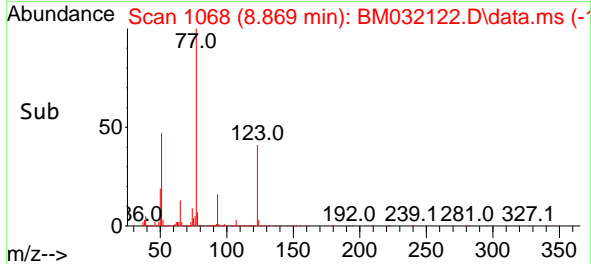
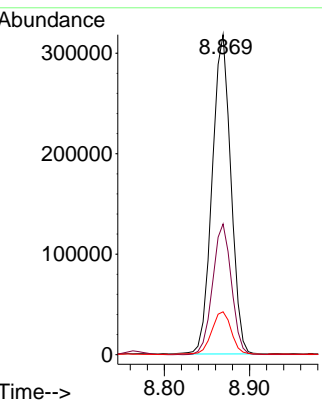
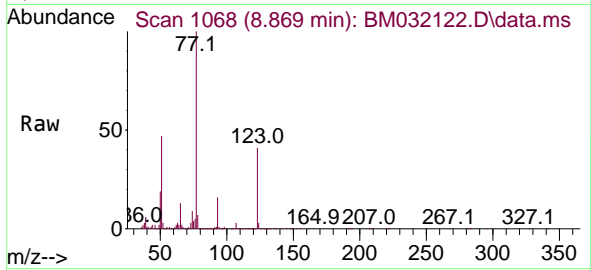




#22
 Nitrobenzene
 Concen: 37.425 ng/u1
 RT: 8.869 min Scan# 1068
 Delta R.T. 0.006 min
 Lab File: BM032122.D
 Acq: 21 Sep 2021 20:06

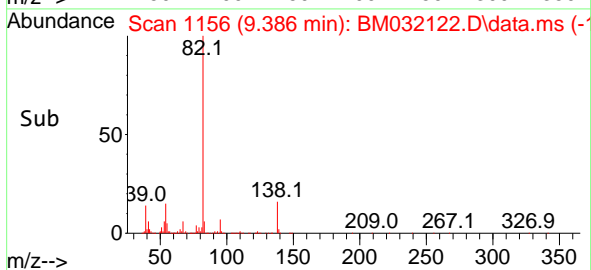
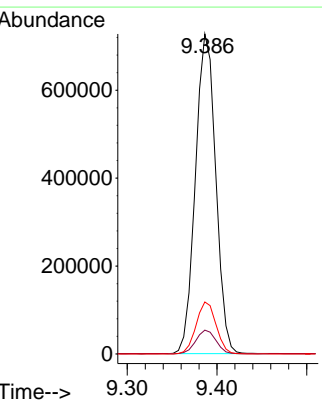
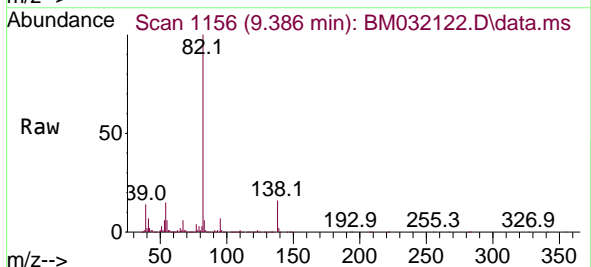
Instrument :
 BNA_M
 ClientSampled :
 SSTD040028

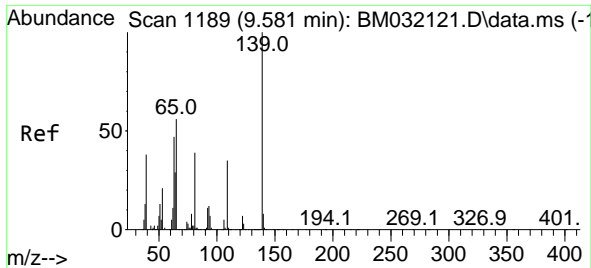
Tgt Ion	Resp	Lower	Upper
77	484138		
123	40.8	34.8	52.2
65	13.4	10.4	15.6



#23
 Isophorone
 Concen: 48.012 ng/u1
 RT: 9.386 min Scan# 1156
 Delta R.T. -0.000 min
 Lab File: BM032122.D
 Acq: 21 Sep 2021 20:06

Tgt Ion	Resp	Lower	Upper
82	1143132		
95	7.5	5.3	7.9
138	16.3	13.6	20.4

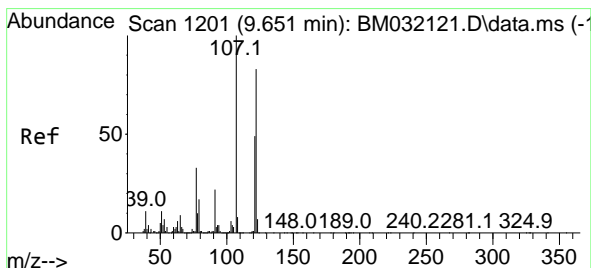
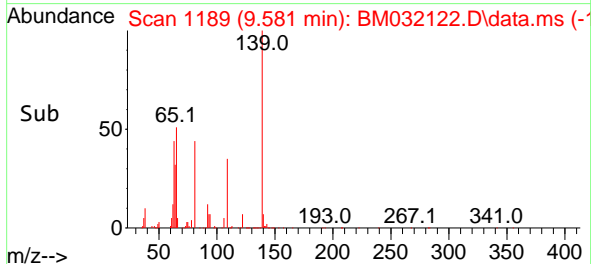
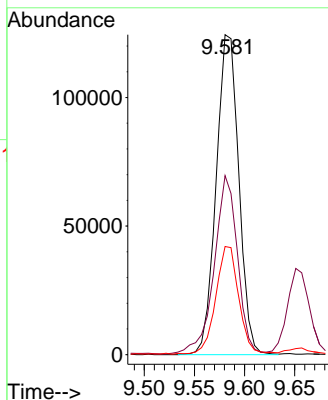
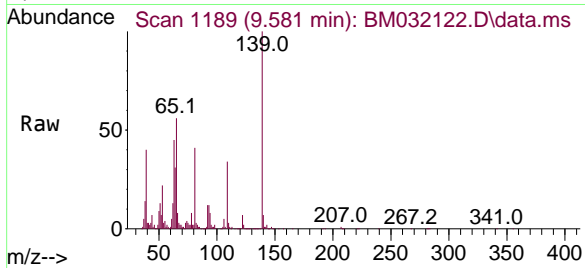




#25
 2-Nitrophenol
 Concen: 30.872 ng/ul
 RT: 9.581 min Scan# 1189
 Delta R.T. -0.000 min
 Lab File: BM032122.D
 Acq: 21 Sep 2021 20:06

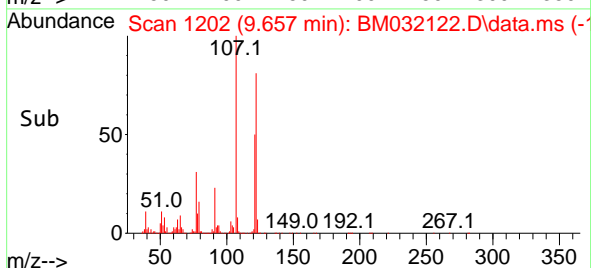
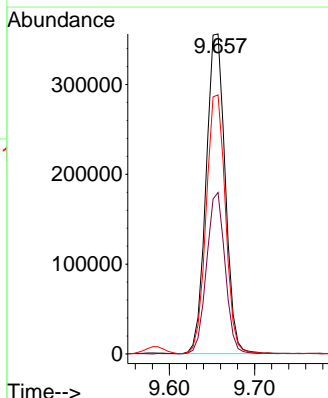
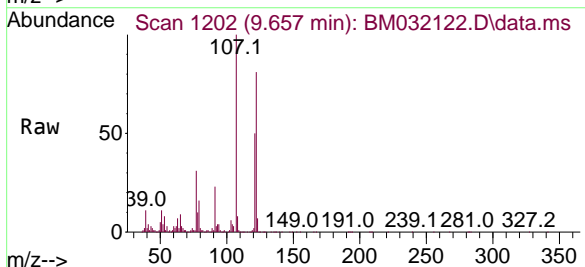
Instrument :
 BNA_M
 ClientSampled :
 SSTD040028

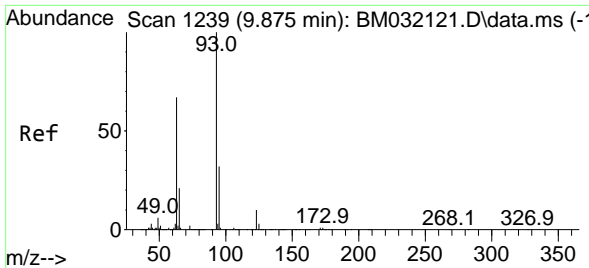
Tgt Ion	Resp	Lower	Upper
139	195025		
65	56.0	43.7	65.5
109	33.8	24.0	36.0



#26
 2,4-Dimethylphenol
 Concen: 43.186 ng/ul
 RT: 9.657 min Scan# 1202
 Delta R.T. 0.006 min
 Lab File: BM032122.D
 Acq: 21 Sep 2021 20:06

Tgt Ion	Resp	Lower	Upper
107	555327		
121	50.5	41.0	61.6
122	80.9	68.2	102.2

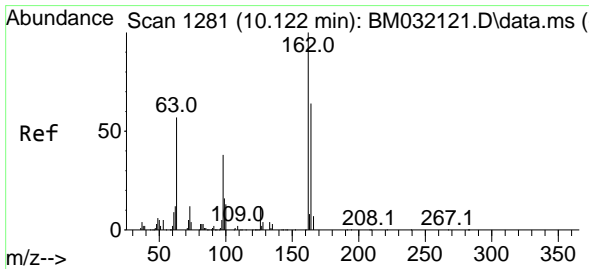
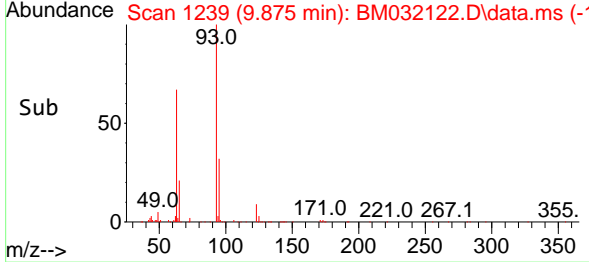
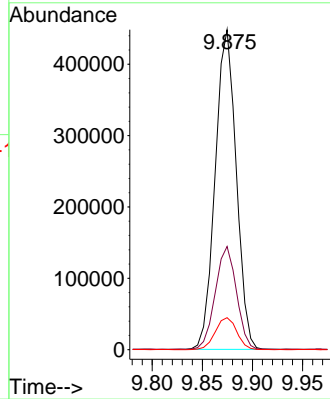
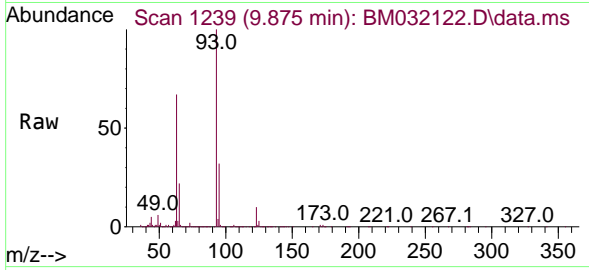




#27
 Bis(2-Chloroethoxy)methane
 Concen: 46.219 ng/ul
 RT: 9.875 min Scan# 1239
 Delta R.T. -0.000 min
 Lab File: BM032122.D
 Acq: 21 Sep 2021 20:06

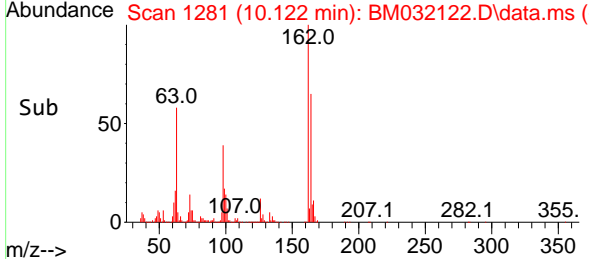
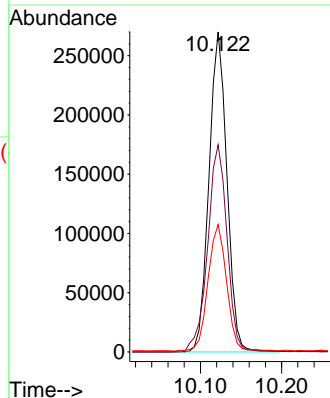
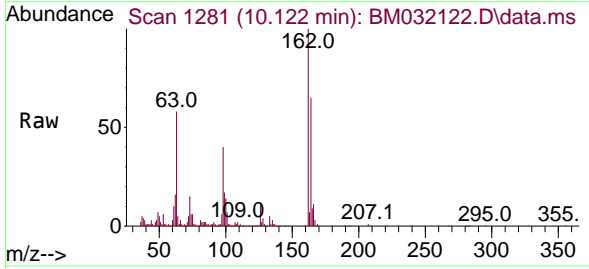
Instrument :
 BNA_M
 ClientSampled :
 SSTD040028

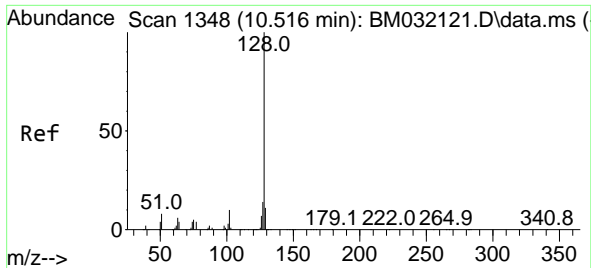
Tgt Ion	Resp	Lower	Upper
93	100		
95	32.3	25.9	38.9
123	10.0	8.5	12.7



#29
 2,4-Dichlorophenol
 Concen: 35.871 ng/ul
 RT: 10.122 min Scan# 1281
 Delta R.T. -0.000 min
 Lab File: BM032122.D
 Acq: 21 Sep 2021 20:06

Tgt Ion	Resp	Lower	Upper
162	100		
164	64.7	51.6	77.4
98	39.8	28.2	42.4



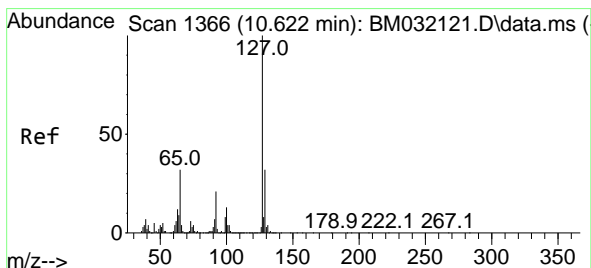
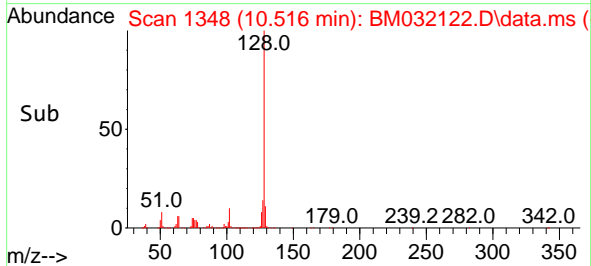
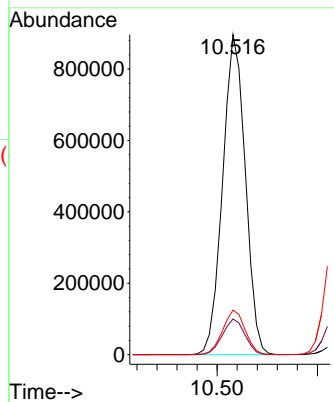
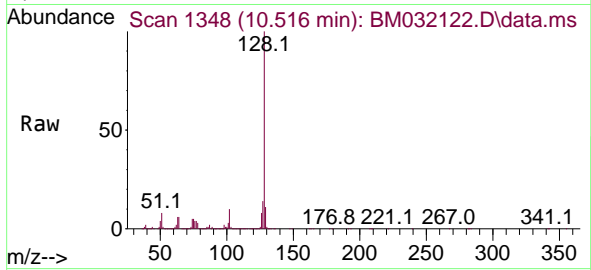


#30
 Naphthalene
 Concen: 39.702 ng/u1
 RT: 10.516 min Scan# 1348
 Delta R.T. -0.000 min
 Lab File: BM032122.D
 Acq: 21 Sep 2021 20:06

Instrument :
 BNA_M
 ClientSampled :
 SSTD040028

Tgt Ion:128 Resp: 1402167

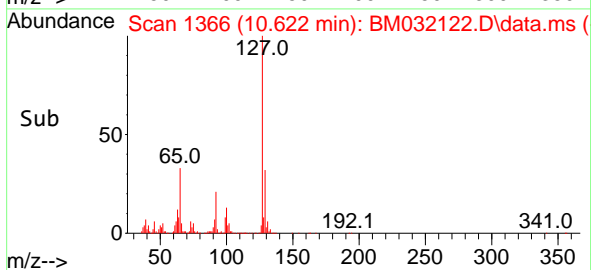
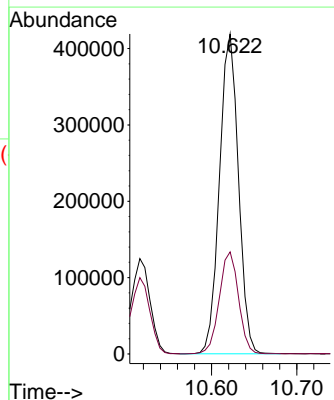
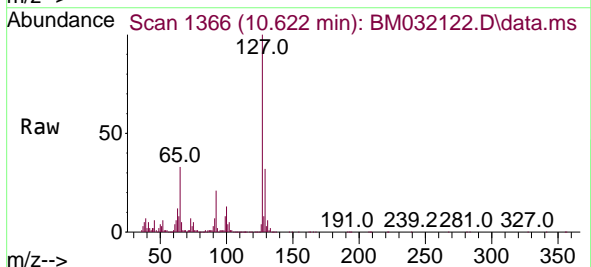
Ion	Ratio	Lower	Upper
128	100		
129	11.2	9.0	13.4
127	13.9	10.6	15.8

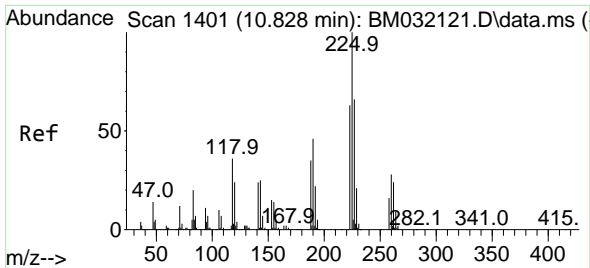


#32
 4-Chloroaniline
 Concen: 37.828 ng/u1
 RT: 10.622 min Scan# 1366
 Delta R.T. -0.000 min
 Lab File: BM032122.D
 Acq: 21 Sep 2021 20:06

Tgt Ion:127 Resp: 647629

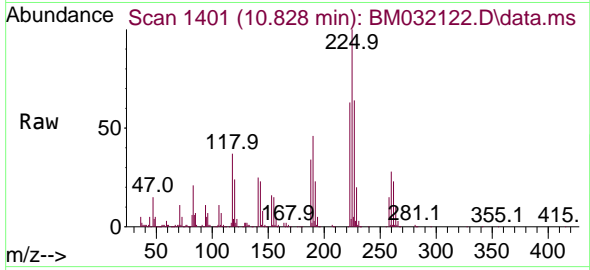
Ion	Ratio	Lower	Upper
127	100		
129	31.9	25.6	38.4



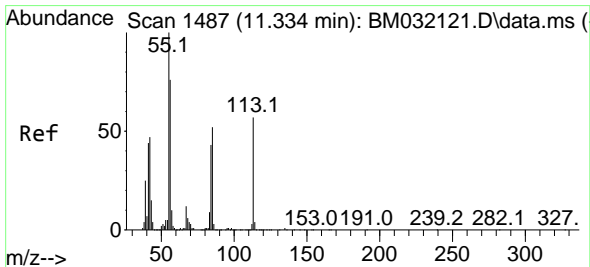
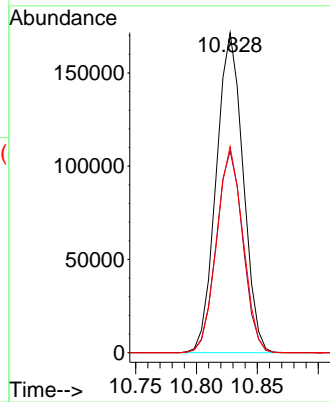
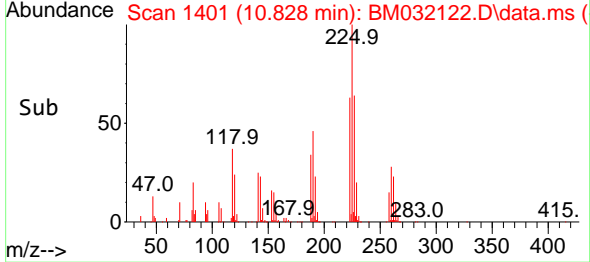


#33
 Hexachlorobutadiene
 Concen: 34.295 ng/uI
 RT: 10.828 min Scan# 1401
 Delta R.T. -0.000 min
 Lab File: BM032122.D
 Acq: 21 Sep 2021 20:06

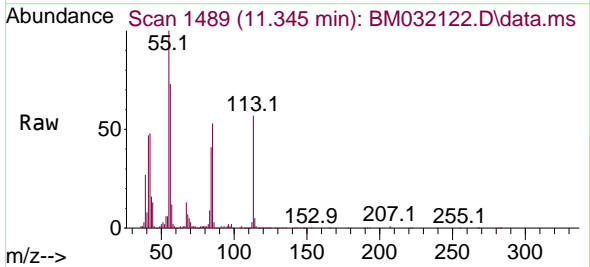
Instrument :
 BNA_M
 ClientSampled :
 SSTD040028



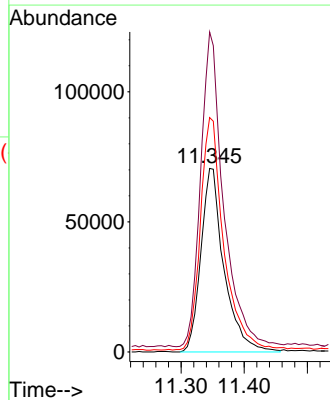
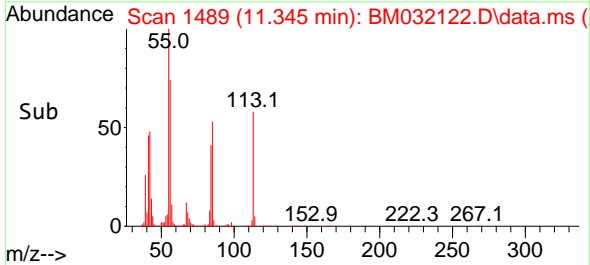
Tgt Ion:225 Resp: 263295
 Ion Ratio Lower Upper
 225 100
 223 63.0 50.7 76.1
 227 64.4 50.7 76.1

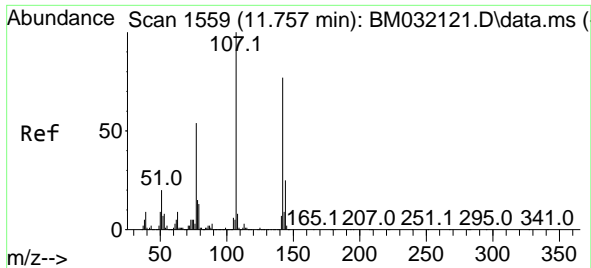


#34
 Caprolactam
 Concen: 46.607 ng/uI
 RT: 11.345 min Scan# 1489
 Delta R.T. 0.011 min
 Lab File: BM032122.D
 Acq: 21 Sep 2021 20:06



Tgt Ion:113 Resp: 179788
 Ion Ratio Lower Upper
 113 100
 55 174.3 155.2 232.8
 56 127.7 101.9 152.9

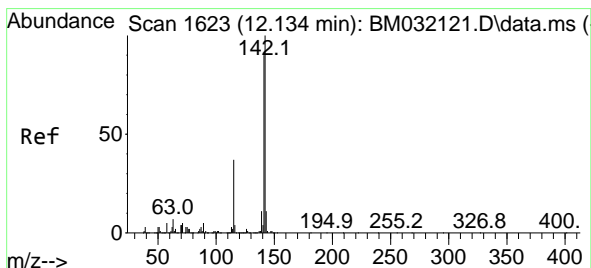
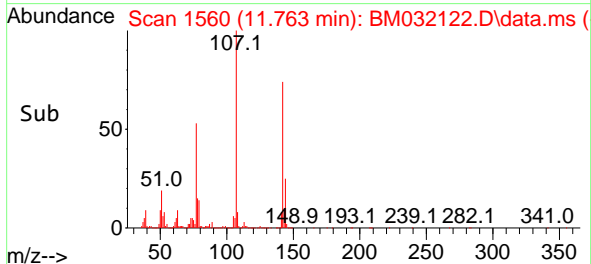
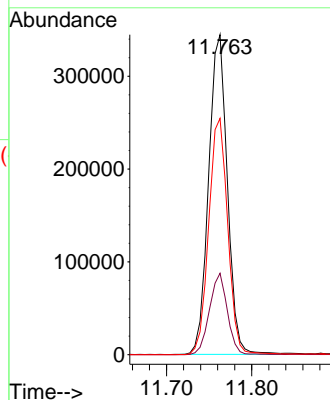
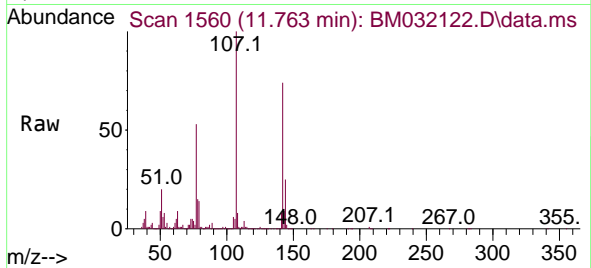




#35
 4-Chloro-3-methylphenol
 Concen: 43.330 ng/ul
 RT: 11.763 min Scan# 1560
 Delta R.T. 0.006 min
 Lab File: BM032122.D
 Acq: 21 Sep 2021 20:06

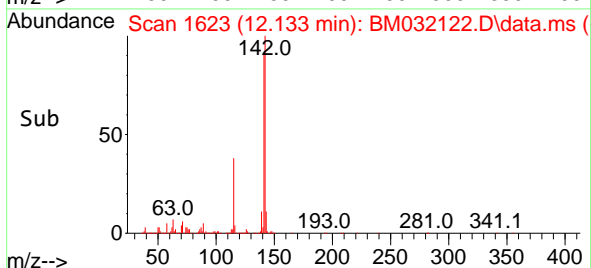
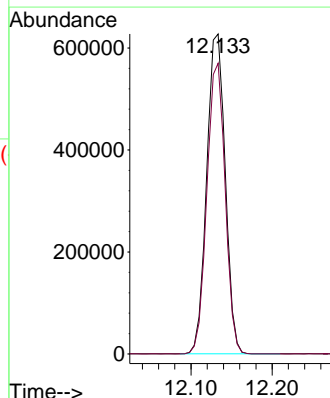
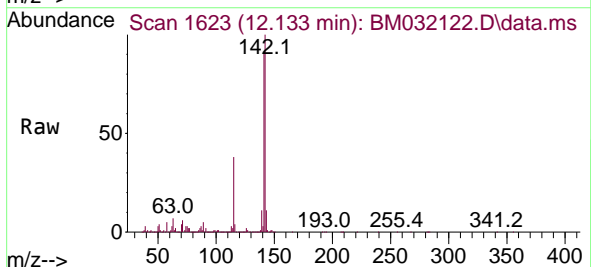
Instrument :
 BNA_M
 ClientSampled :
 SSTD040028

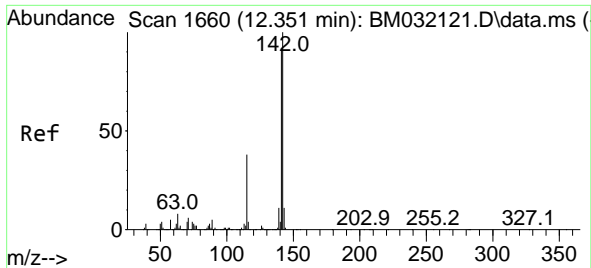
Tgt Ion	Resp	Lower	Upper
107	525858		
107	100		
144	25.5	22.3	33.5
142	73.8	65.6	98.4



#36
 2-Methylnaphthalene
 Concen: 35.627 ng/ul
 RT: 12.133 min Scan# 1623
 Delta R.T. -0.000 min
 Lab File: BM032122.D
 Acq: 21 Sep 2021 20:06

Tgt Ion	Resp	Lower	Upper
142	992074		
142	100		
141	90.9	70.6	105.8

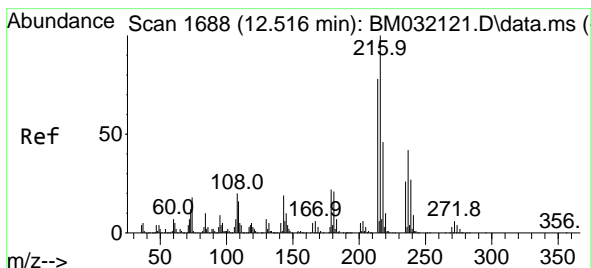
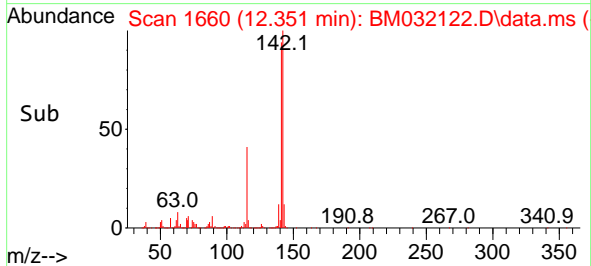
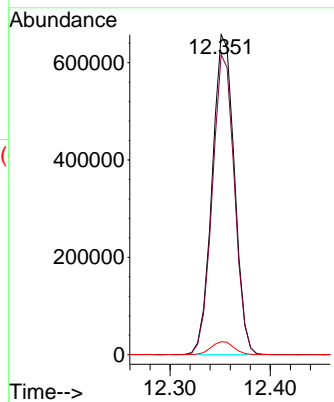
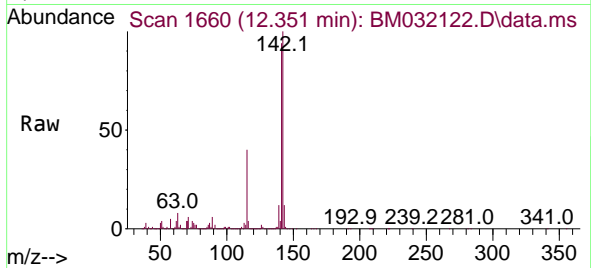




#37
 1-Methylnaphthalene
 Concen: 35.605 ng/uI
 RT: 12.351 min Scan# 1660
 Delta R.T. -0.000 min
 Lab File: BM032122.D
 Acq: 21 Sep 2021 20:06

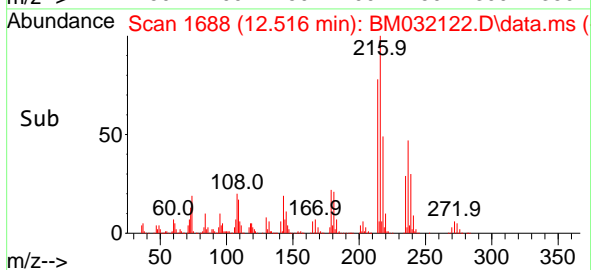
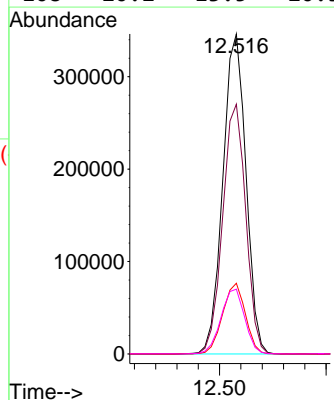
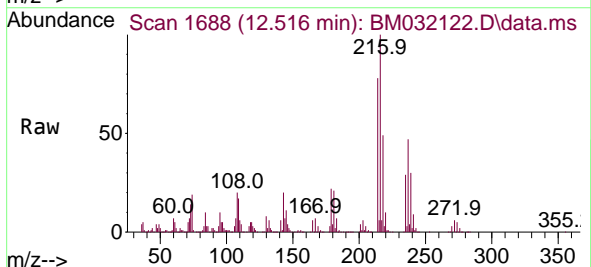
Instrument :
 BNA_M
 ClientSampled :
 SSTD040028

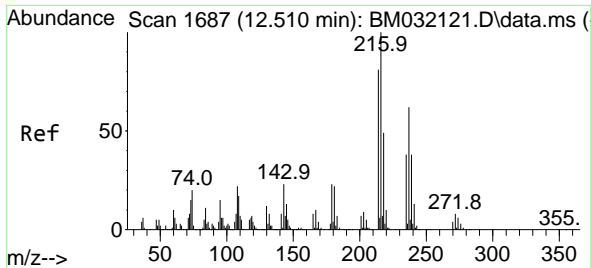
Tgt Ion	Resp	Lower	Upper
142	100		
141	93.8	72.8	109.2
116	4.1	3.1	4.7



#39
 1,2,4,5-Tetrachlorobenzene
 Concen: 37.345 ng/uI
 RT: 12.516 min Scan# 1688
 Delta R.T. -0.000 min
 Lab File: BM032122.D
 Acq: 21 Sep 2021 20:06

Tgt Ion	Resp	Lower	Upper
216	100		
214	78.1	62.2	93.4
179	22.1	16.6	24.8
108	20.2	13.5	20.3

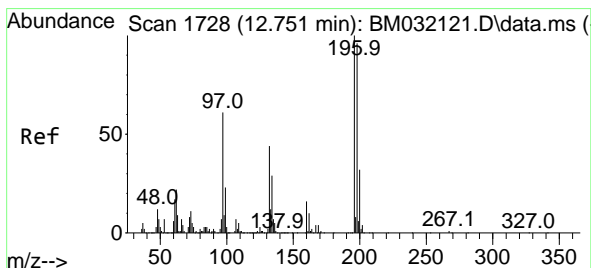
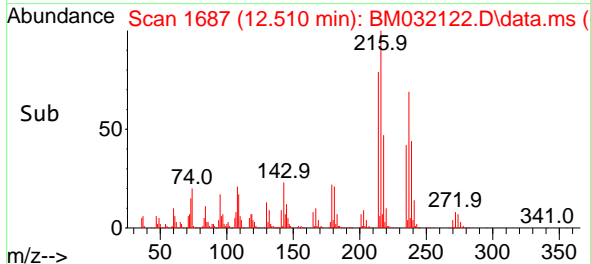
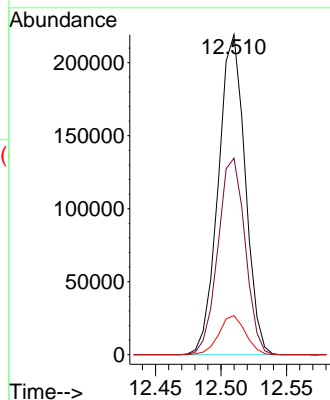
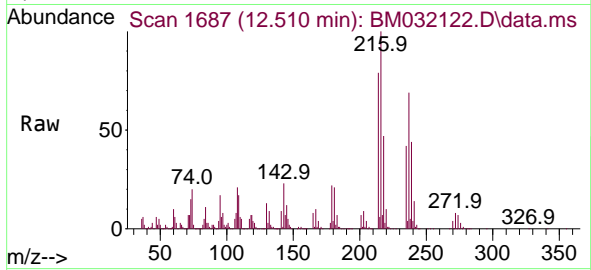




#40
 Hexachlorocyclopentadiene
 Concen: 41.653 ng/ul
 RT: 12.510 min Scan# 1687
 Delta R.T. -0.000 min
 Lab File: BM032122.D
 Acq: 21 Sep 2021 20:06

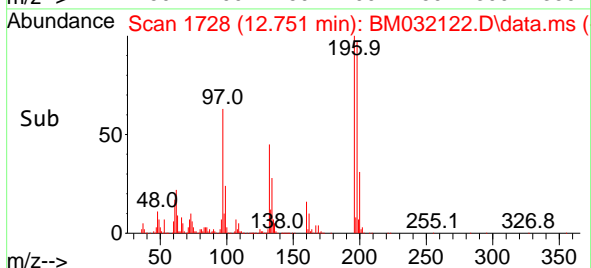
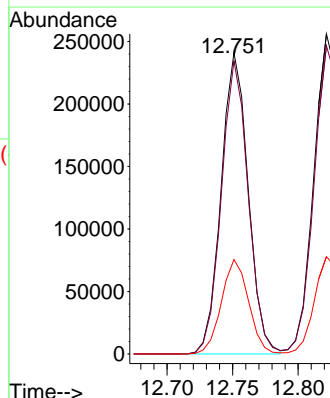
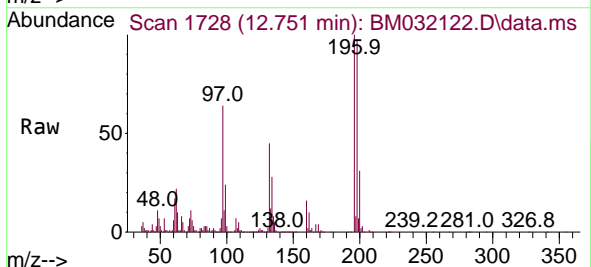
Instrument :
 BNA_M
 ClientSampled :
 SSTD040028

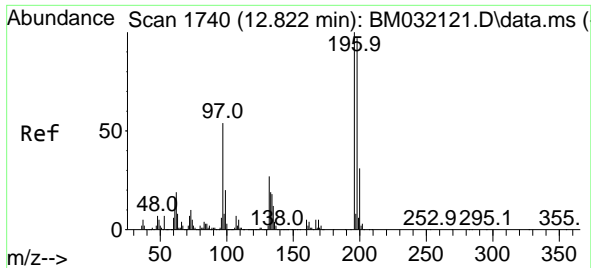
Tgt Ion:237 Resp: 312166
 Ion Ratio Lower Upper
 237 100
 235 61.4 49.0 73.4
 272 12.2 11.0 16.4



#41
 2,4,6-Trichlorophenol
 Concen: 37.081 ng/ul
 RT: 12.751 min Scan# 1728
 Delta R.T. -0.000 min
 Lab File: BM032122.D
 Acq: 21 Sep 2021 20:06

Tgt Ion:196 Resp: 345886
 Ion Ratio Lower Upper
 196 100
 198 97.2 78.8 118.2
 200 31.3 26.0 39.0

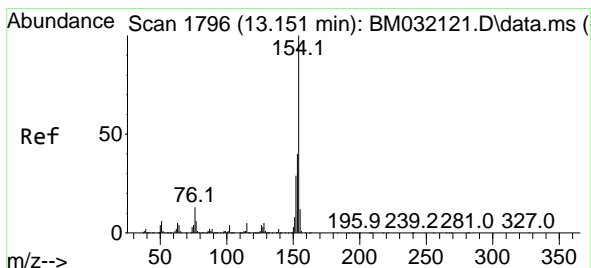
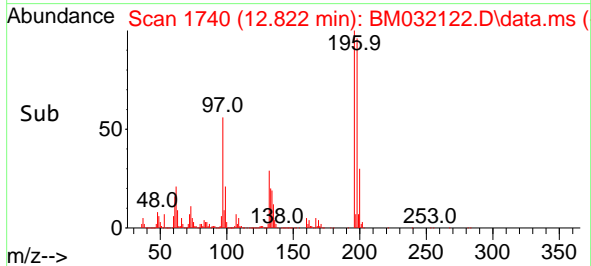
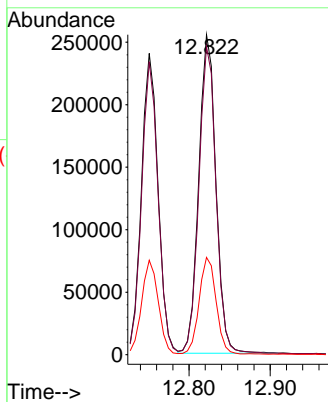
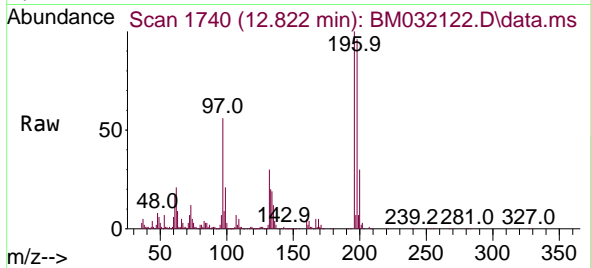




#42
 2,4,5-Trichlorophenol
 Concen: 37.036 ng/uI
 RT: 12.822 min Scan# 1740
 Delta R.T. -0.000 min
 Lab File: BM032122.D
 Acq: 21 Sep 2021 20:06

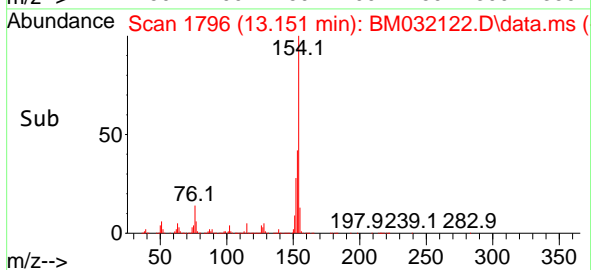
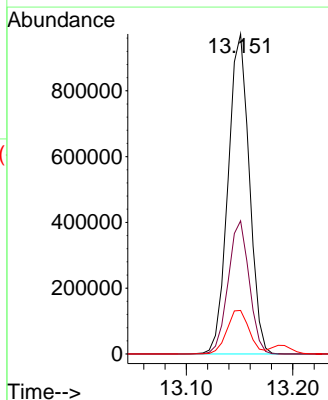
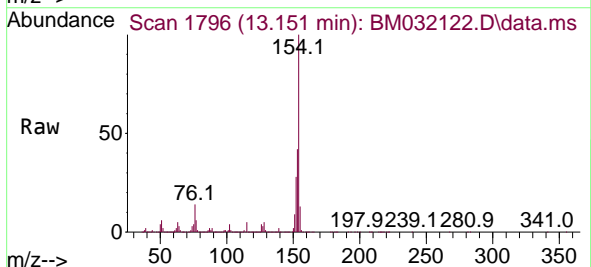
Instrument :
 BNA_M
 ClientSampled :
 SSTD040028

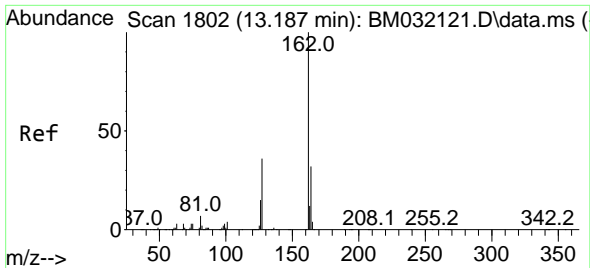
Tgt Ion	Resp	Lower	Upper
196	375161		
198	96.3	76.1	114.1
200	30.4	25.4	38.2



#43
 1,1'-Biphenyl
 Concen: 39.487 ng/uI
 RT: 13.151 min Scan# 1796
 Delta R.T. -0.000 min
 Lab File: BM032122.D
 Acq: 21 Sep 2021 20:06

Tgt Ion	Resp	Lower	Upper
154	1347251		
153	41.6	32.3	48.5
76	13.6	10.6	15.8



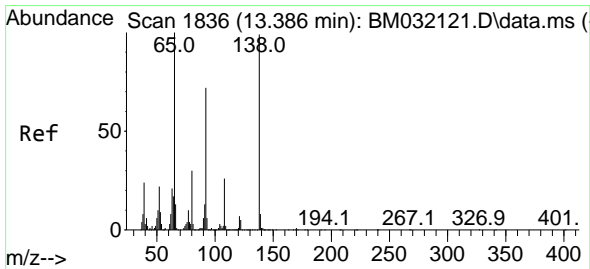
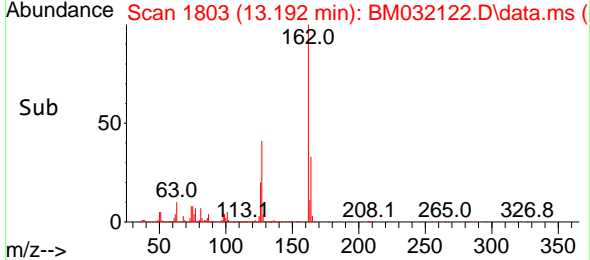
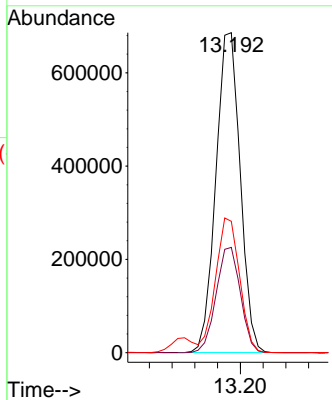
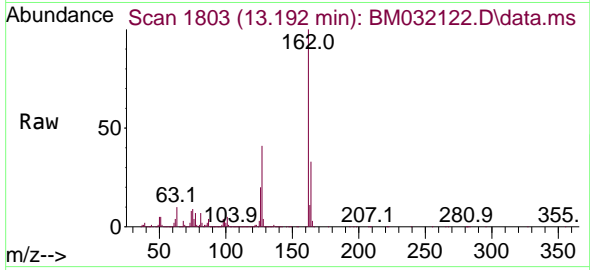


#44
 2-Chloronaphthalene
 Concen: 37.744 ng/ul
 RT: 13.192 min Scan# 1803
 Delta R.T. 0.006 min
 Lab File: BM032122.D
 Acq: 21 Sep 2021 20:06

Instrument :
 BNA_M
ClientSampled :
 SSTD040028

Tgt Ion:162 Resp: 1020235

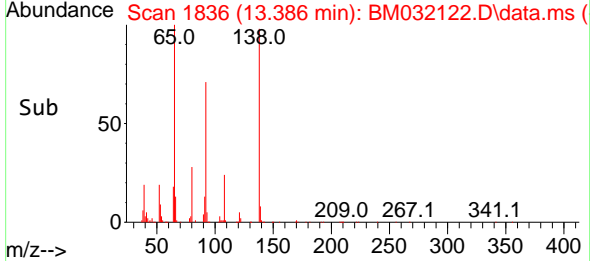
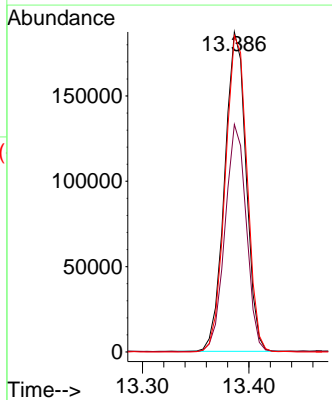
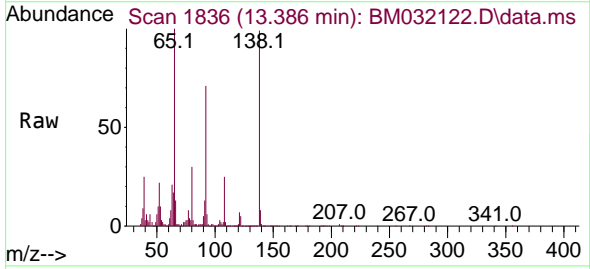
Ion	Ratio	Lower	Upper
162	100		
164	32.9	26.2	39.4
127	41.1	29.4	44.0

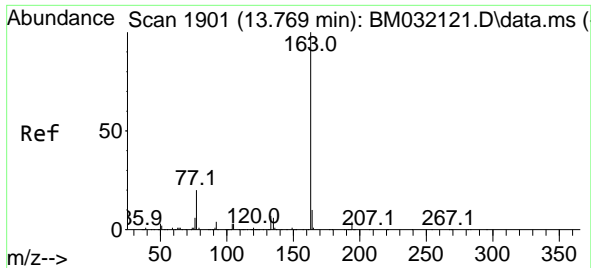


#45
 2-Nitroaniline
 Concen: 35.150 ng/ul
 RT: 13.386 min Scan# 1836
 Delta R.T. -0.000 min
 Lab File: BM032122.D
 Acq: 21 Sep 2021 20:06

Tgt Ion: 65 Resp: 261765

Ion	Ratio	Lower	Upper
65	100		
92	71.1	53.9	80.9
138	98.9	83.3	124.9



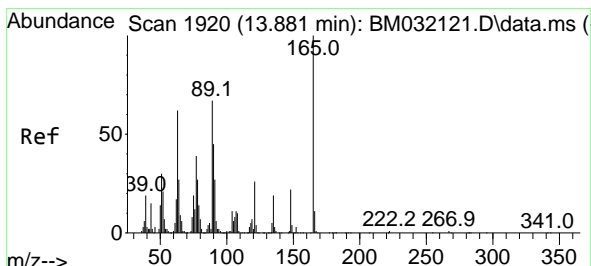
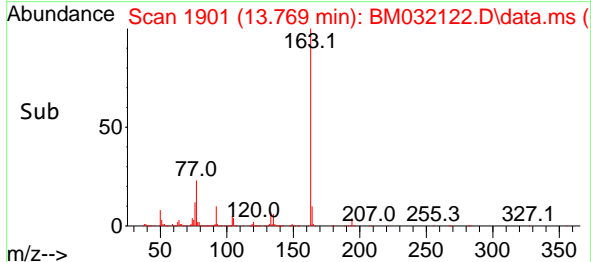
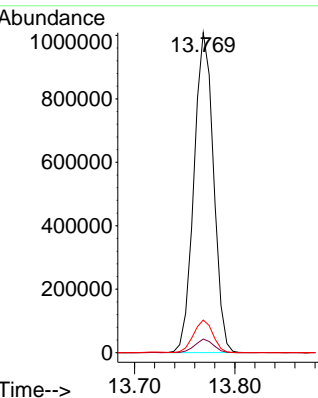
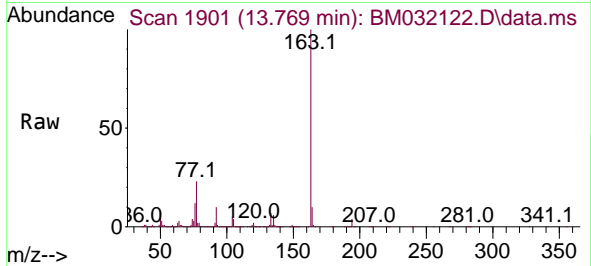


#47
 Dimethylphthalate
 Concen: 38.009 ng/ul
 RT: 13.769 min Scan# 1901
 Delta R.T. -0.000 min
 Lab File: BM032122.D
 Acq: 21 Sep 2021 20:06

Instrument :
 BNA_M
 ClientSampleId :
 SSTD040028

Tgt Ion:163 Resp: 1369789

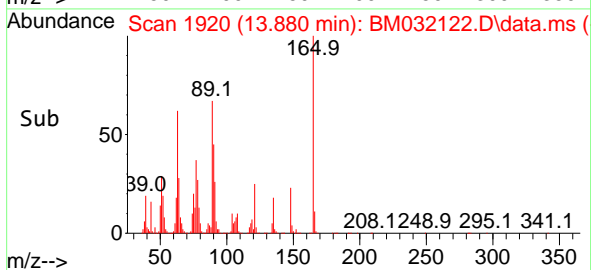
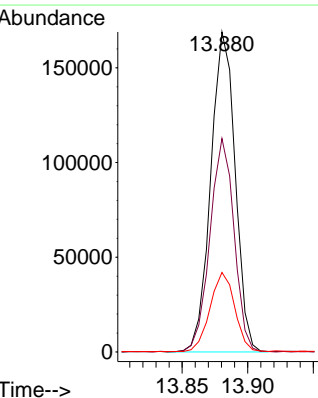
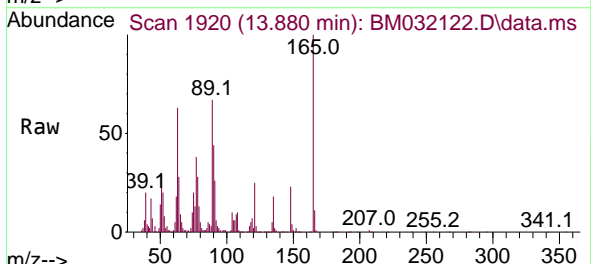
Ion	Ratio	Lower	Upper
163	100		
194	4.2	3.2	4.8
164	10.2	8.2	12.4

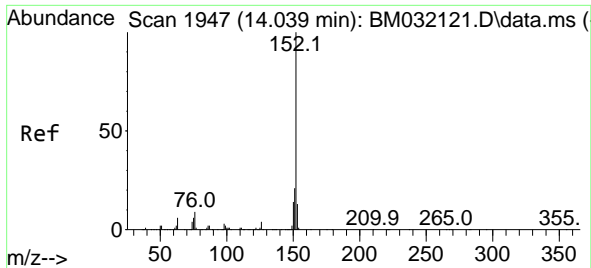


#48
 2,6-Dinitrotoluene
 Concen: 30.779 ng/ul
 RT: 13.880 min Scan# 1920
 Delta R.T. -0.000 min
 Lab File: BM032122.D
 Acq: 21 Sep 2021 20:06

Tgt Ion:165 Resp: 218832

Ion	Ratio	Lower	Upper
165	100		
89	66.7	48.6	72.8
121	24.9	18.1	27.1



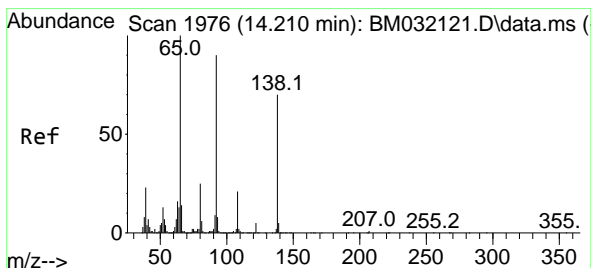
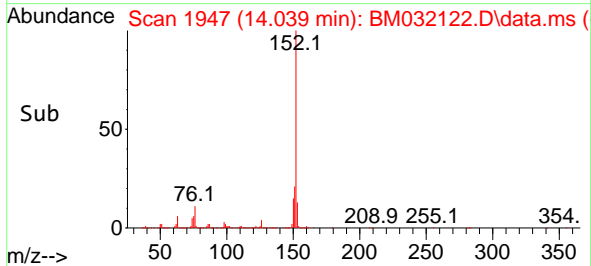
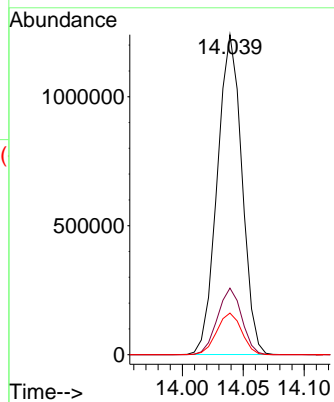
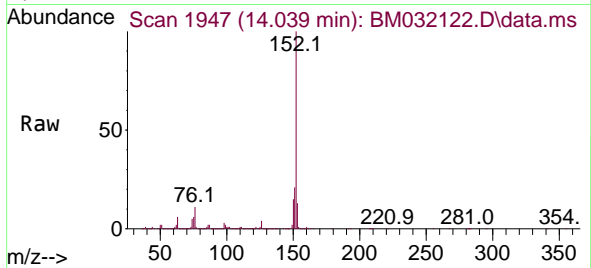


#50
 Acenaphthylene
 Concen: 43.706 ng/uI
 RT: 14.039 min Scan# 1947
 Delta R.T. -0.000 min
 Lab File: BM032122.D
 Acq: 21 Sep 2021 20:06

Instrument :
 BNA_M
 ClientSampled :
 SSTD040028

Tgt Ion:152 Resp: 1748040

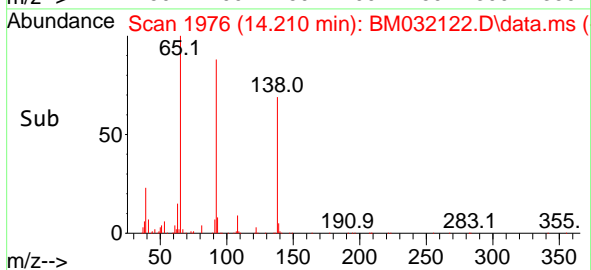
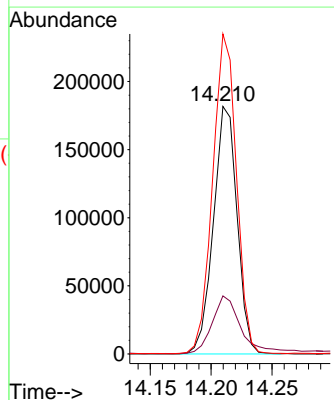
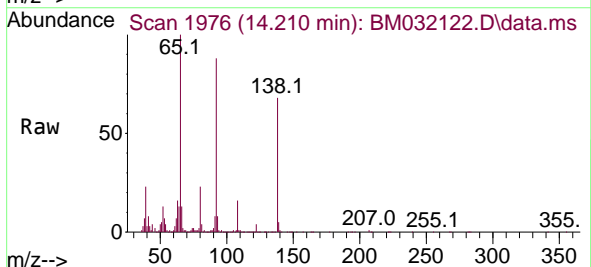
Ion	Ratio	Lower	Upper
152	100		
151	20.8	16.2	24.2
153	13.0	10.2	15.4

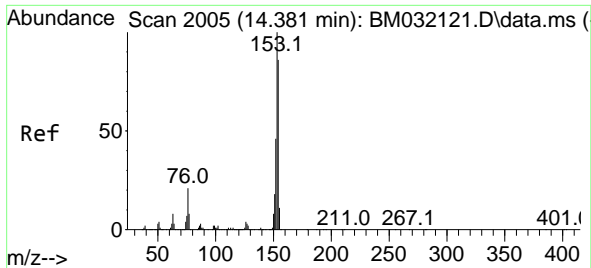


#51
 3-Nitroaniline
 Concen: 36.972 ng/uI
 RT: 14.210 min Scan# 1976
 Delta R.T. -0.000 min
 Lab File: BM032122.D
 Acq: 21 Sep 2021 20:06

Tgt Ion:138 Resp: 245992

Ion	Ratio	Lower	Upper
138	100		
108	23.5	7.4	11.2#
92	129.3	96.5	144.7

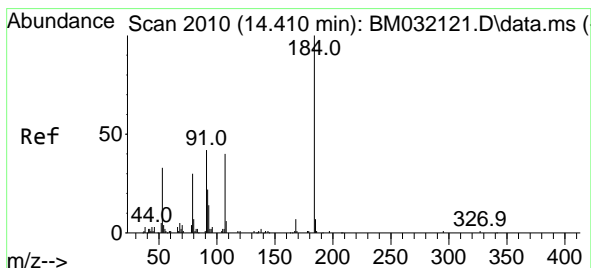
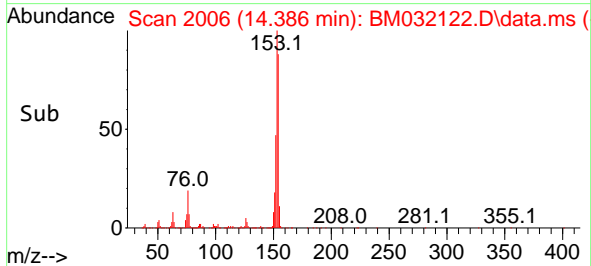
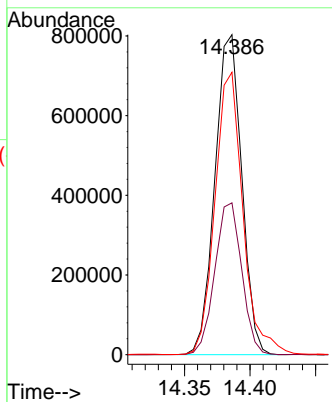
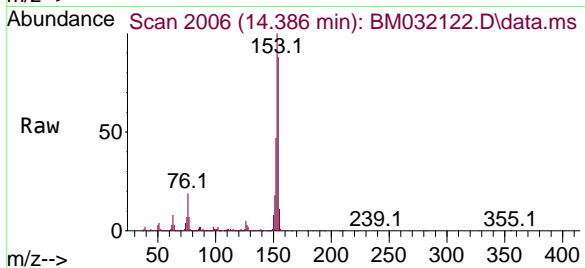




#52
 Acenaphthene
 Concen: 39.337 ng/u1
 RT: 14.386 min Scan# 2006
 Delta R.T. 0.006 min
 Lab File: BM032122.D
 Acq: 21 Sep 2021 20:06

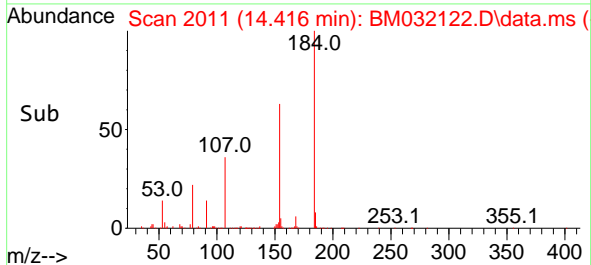
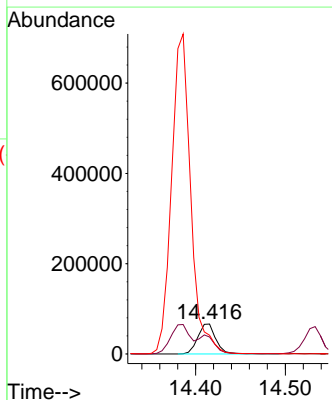
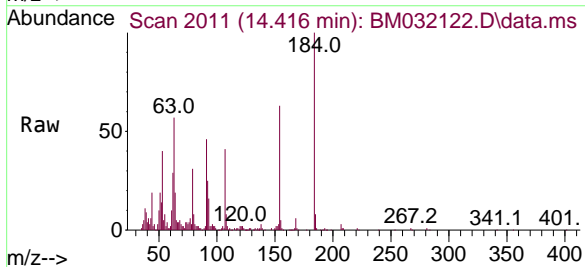
Instrument :
 BNA_M
 ClientSampled :
 SSTD040028

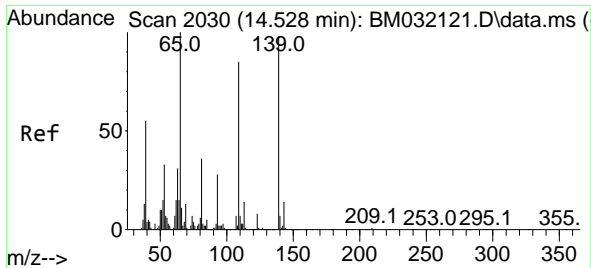
Tgt Ion:153 Resp: 1142643
 Ion Ratio Lower Upper
 153 100
 152 47.4 37.4 56.2
 154 88.3 69.4 104.0



#53
 2,4-Dinitrophenol
 Concen: 18.763 ng/u1
 RT: 14.416 min Scan# 2011
 Delta R.T. 0.006 min
 Lab File: BM032122.D
 Acq: 21 Sep 2021 20:06

Tgt Ion:184 Resp: 93274
 Ion Ratio Lower Upper
 184 100
 63 56.6 56.9 85.3#
 154 62.8 49.0 73.6

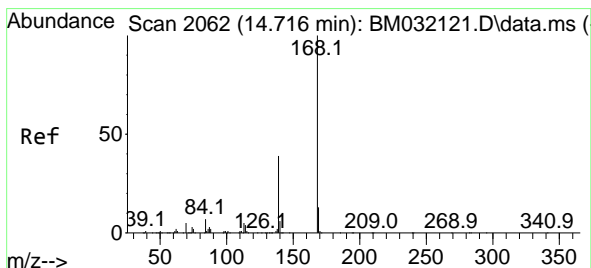
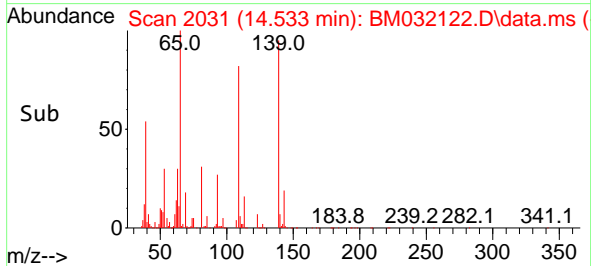
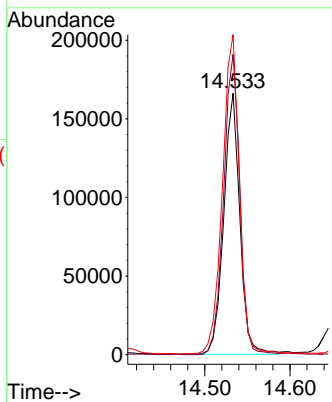
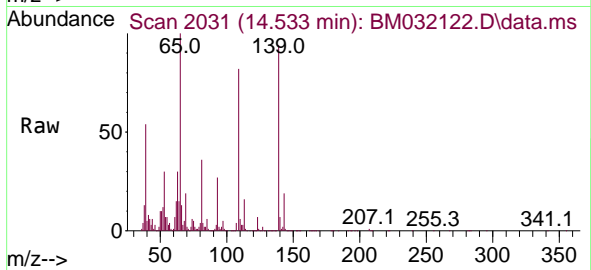




#55
 4-Nitrophenol
 Concen: 35.472 ng/uI
 RT: 14.533 min Scan# 2031
 Delta R.T. 0.006 min
 Lab File: BM032122.D
 Acq: 21 Sep 2021 20:06

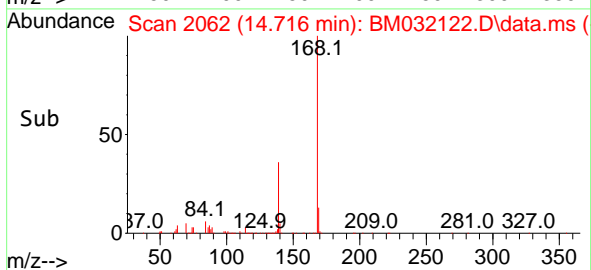
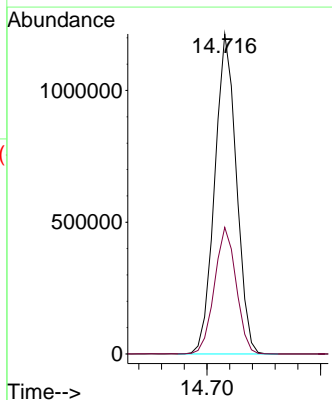
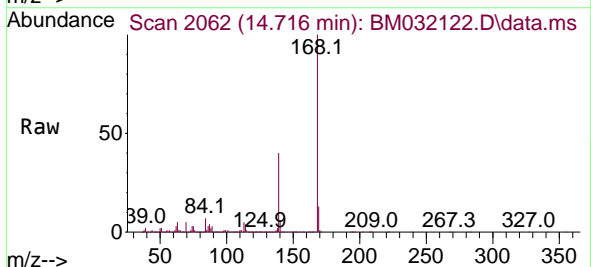
Instrument :
 BNA_M
ClientSampled :
 SSTD040028

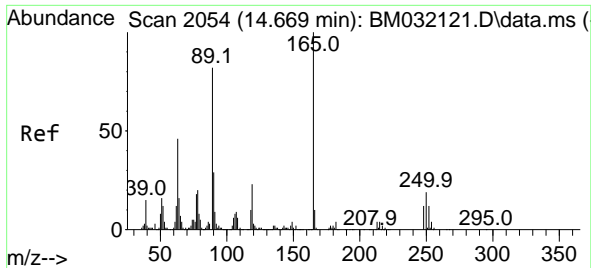
Tgt Ion	Resp	Lower	Upper
109	217555		
109	100		
139	114.9	100.3	150.5
65	122.4	104.6	156.8



#56
 Dibenzofuran
 Concen: 37.551 ng/uI
 RT: 14.716 min Scan# 2062
 Delta R.T. -0.000 min
 Lab File: BM032122.D
 Acq: 21 Sep 2021 20:06

Tgt Ion	Resp	Lower	Upper
168	1608630		
168	100		
139	39.5	29.5	44.3

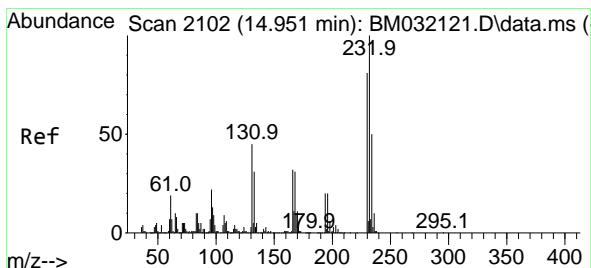
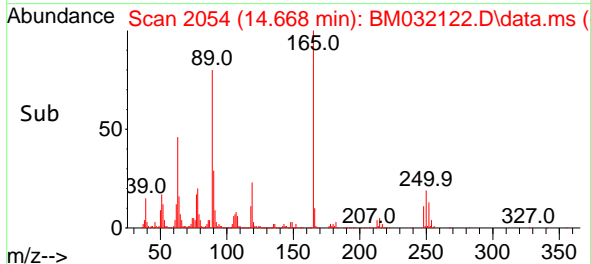
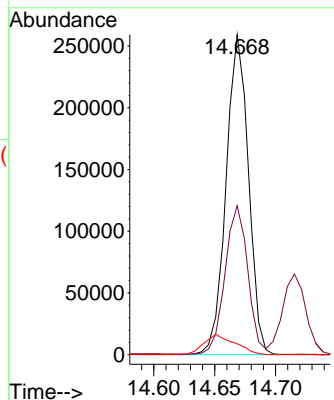
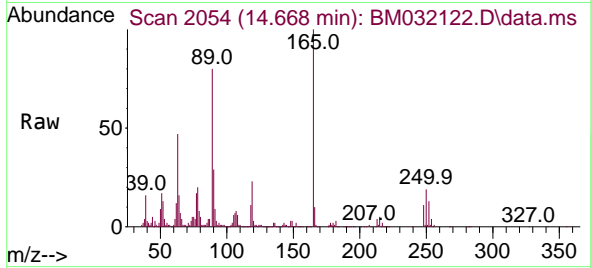




#57
 2,4-Dinitrotoluene
 Concen: 31.061 ng/ul
 RT: 14.668 min Scan# 2054
 Delta R.T. -0.000 min
 Lab File: BM032122.D
 Acq: 21 Sep 2021 20:06

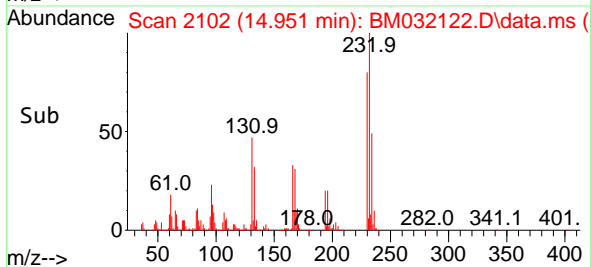
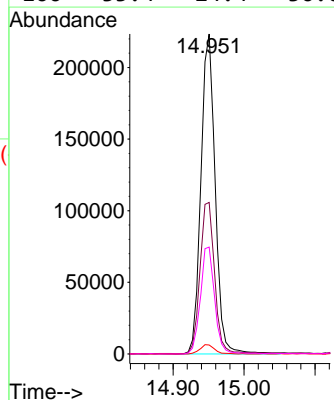
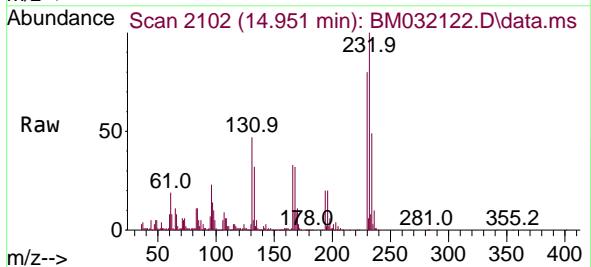
Instrument :
 BNA_M
 ClientSampleId :
 SSTD040028

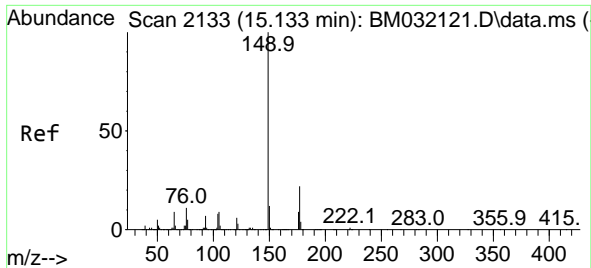
Tgt Ion:165 Resp: 331217
 Ion Ratio Lower Upper
 165 100
 63 46.6 37.6 56.4
 182 3.4 1.8 2.8#



#58
 2,3,4,6-Tetrachlorophenol
 Concen: 34.470 ng/ul
 RT: 14.951 min Scan# 2102
 Delta R.T. -0.000 min
 Lab File: BM032122.D
 Acq: 21 Sep 2021 20:06

Tgt Ion:232 Resp: 313454
 Ion Ratio Lower Upper
 232 100
 131 47.3 35.0 52.6
 130 2.8 1.7 2.5#
 166 33.4 24.4 36.6

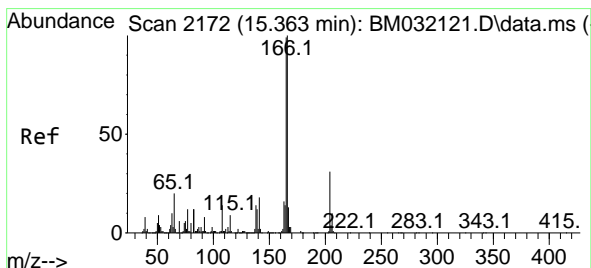
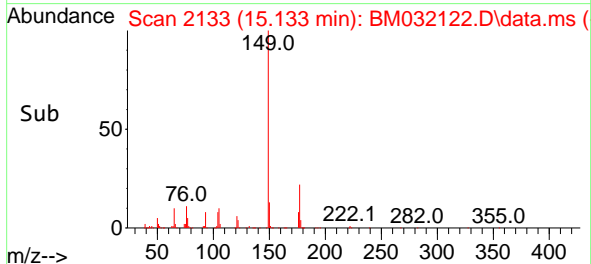
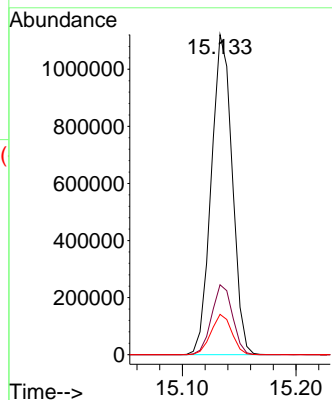
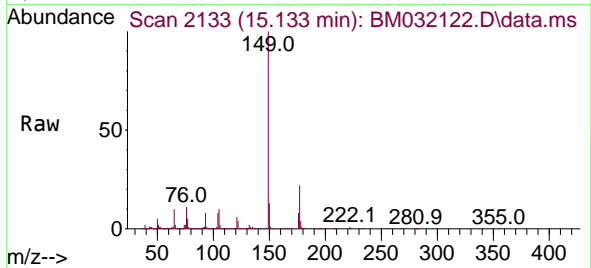




#59
 Diethylphthalate
 Concen: 39.025 ng/uI
 RT: 15.133 min Scan# 2133
 Delta R.T. -0.000 min
 Lab File: BM032122.D
 Acq: 21 Sep 2021 20:06

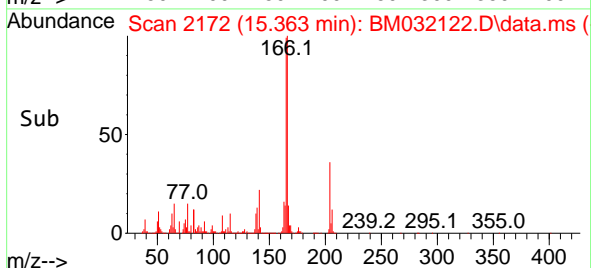
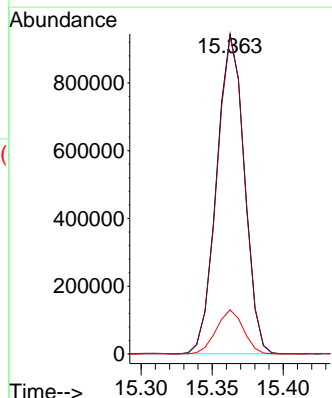
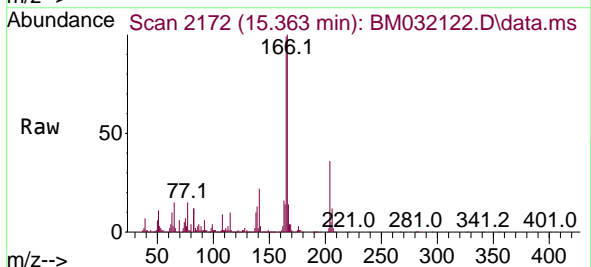
Instrument :
 BNA_M
 ClientSampled :
 SSTD040028

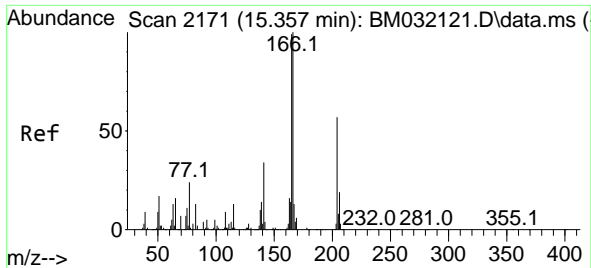
Tgt Ion:149 Resp: 1437429
 Ion Ratio Lower Upper
 149 100
 177 21.8 17.0 25.4
 150 12.6 9.9 14.9



#61
 Fluorene
 Concen: 35.336 ng/uI
 RT: 15.363 min Scan# 2172
 Delta R.T. -0.000 min
 Lab File: BM032122.D
 Acq: 21 Sep 2021 20:06

Tgt Ion:166 Resp: 1280833
 Ion Ratio Lower Upper
 166 100
 165 99.3 78.4 117.6
 167 13.8 10.6 15.8

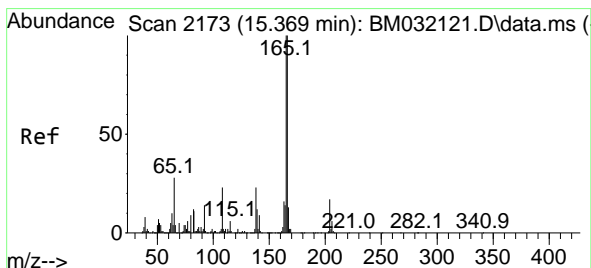
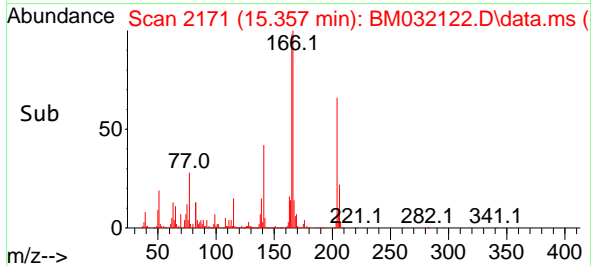
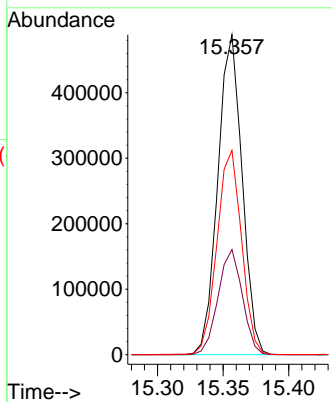
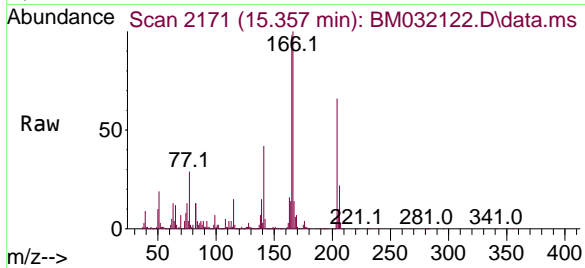




#62
 4-Chlorophenyl-phenylether
 Concen: 33.899 ng/ul
 RT: 15.357 min Scan# 2171
 Delta R.T. -0.000 min
 Lab File: BM032122.D
 Acq: 21 Sep 2021 20:06

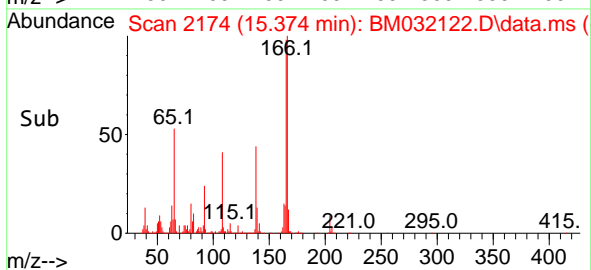
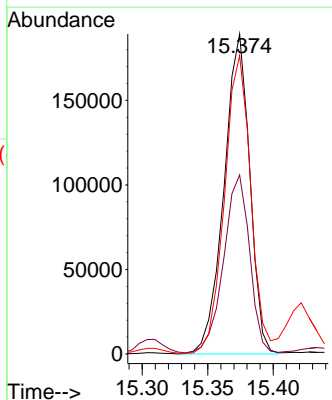
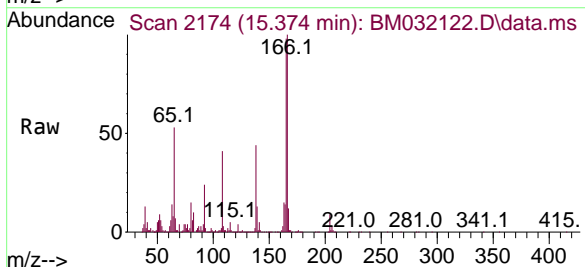
Instrument :
 BNA_M
 ClientSampled :
 SSTD040028

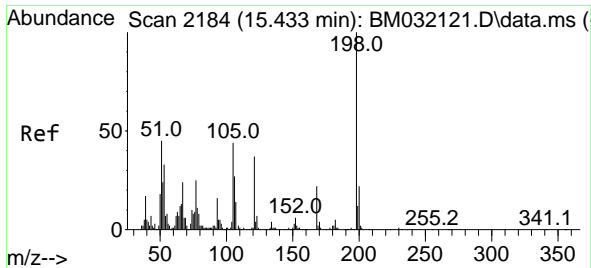
Tgt Ion	Resp	Lower	Upper
204	629300		
100			
206	32.9	26.0	39.0
141	63.9	45.6	68.4



#63
 4-Nitroaniline
 Concen: 43.506 ng/ul
 RT: 15.374 min Scan# 2174
 Delta R.T. 0.006 min
 Lab File: BM032122.D
 Acq: 21 Sep 2021 20:06

Tgt Ion	Resp	Lower	Upper
138	259296		
100			
92	55.9	41.5	62.3
108	93.2	61.4	92.2#

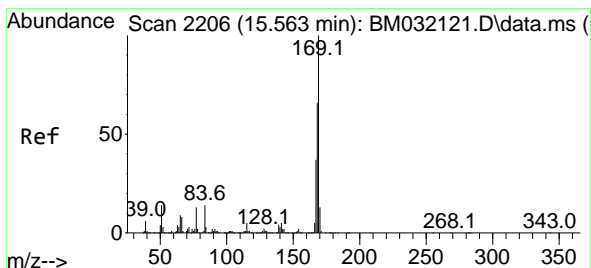
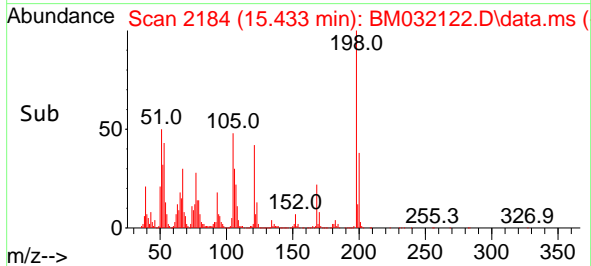
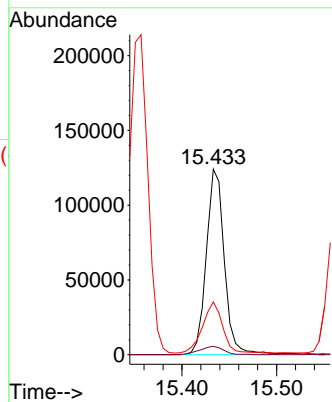
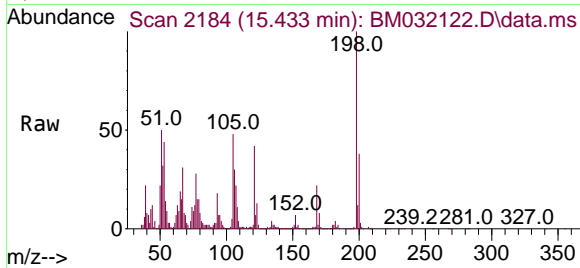




#66
 4,6-Dinitro-2-methylphenol
 Concen: 23.126 ng/ul
 RT: 15.433 min Scan# 2184
 Delta R.T. -0.000 min
 Lab File: BM032122.D
 Acq: 21 Sep 2021 20:06

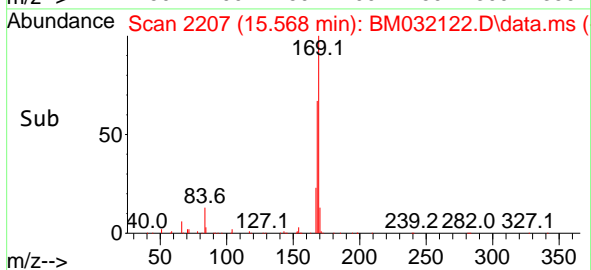
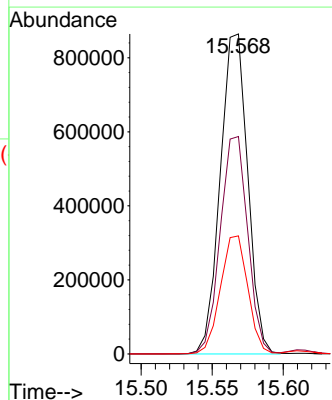
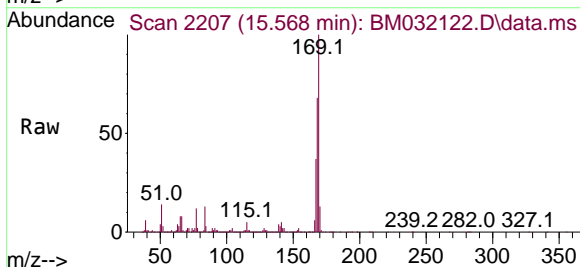
Instrument :
 BNA_M
 ClientSampled :
 SSTD040028

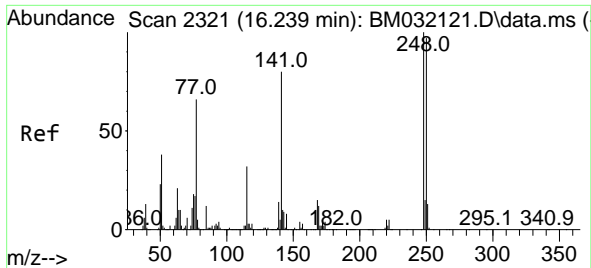
Tgt Ion	Resp	Lower	Upper
198	164338		
182	4.5	3.8	5.6
77	28.5	20.1	30.1



#67
 N-Nitrosodiphenylamine
 Concen: 38.102 ng/ul
 RT: 15.568 min Scan# 2207
 Delta R.T. 0.006 min
 Lab File: BM032122.D
 Acq: 21 Sep 2021 20:06

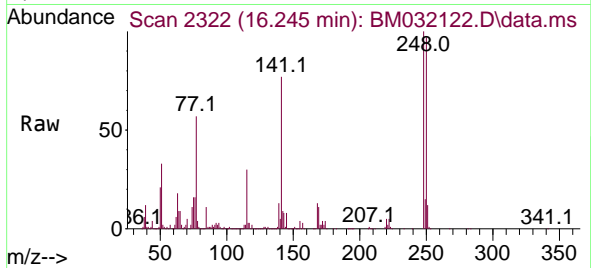
Tgt Ion	Resp	Lower	Upper
169	1163795		
168	67.9	53.8	80.6
167	36.9	28.6	43.0



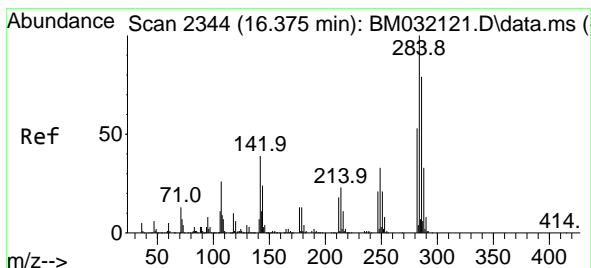
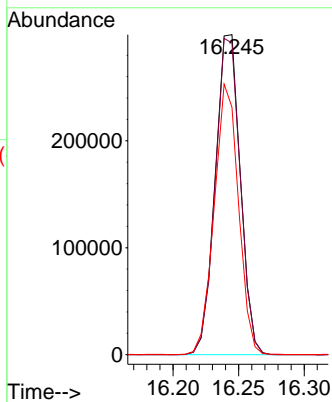
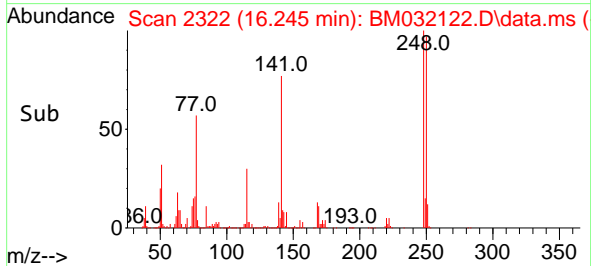


#68
 4-Bromophenyl-phenylether
 Concen: 36.538 ng/ul
 RT: 16.245 min Scan# 2322
 Delta R.T. 0.006 min
 Lab File: BM032122.D
 Acq: 21 Sep 2021 20:06

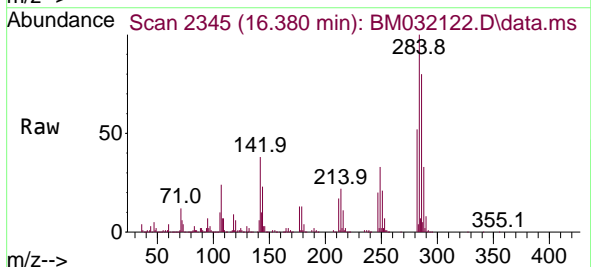
Instrument :
 BNA_M
 ClientSampleId :
 SSTD040028



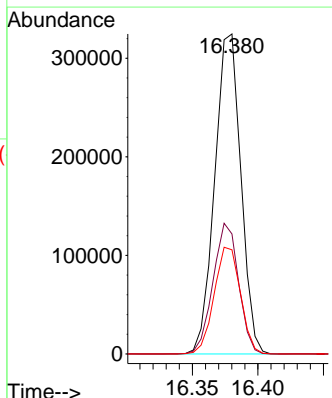
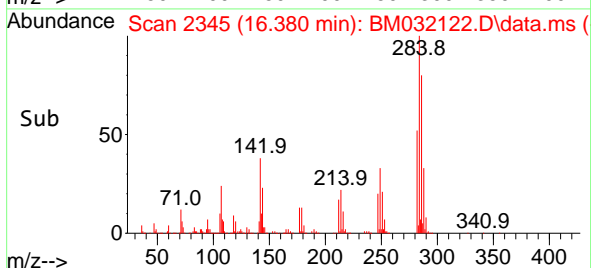
Tgt Ion:248 Resp: 398236
 Ion Ratio Lower Upper
 248 100
 250 97.4 78.6 118.0
 141 77.4 56.2 84.2

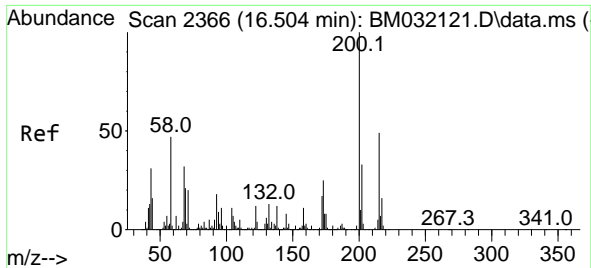


#69
 Hexachlorobenzene
 Concen: 35.549 ng/ul
 RT: 16.380 min Scan# 2345
 Delta R.T. 0.006 min
 Lab File: BM032122.D
 Acq: 21 Sep 2021 20:06



Tgt Ion:284 Resp: 449863
 Ion Ratio Lower Upper
 284 100
 142 37.5 29.0 43.4
 249 32.5 25.0 37.4

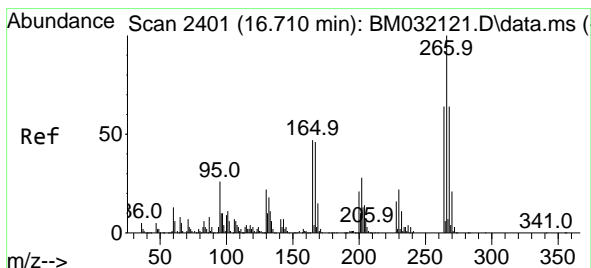
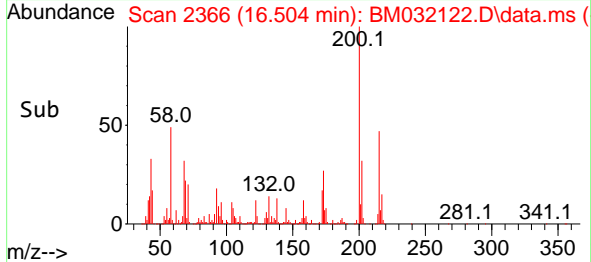
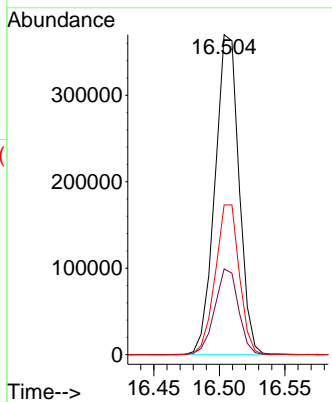
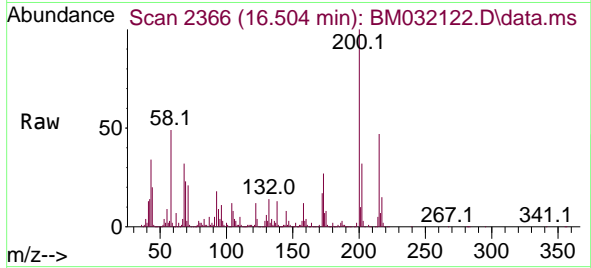




#70
 Atrazine
 Concen: 40.941 ng/uI
 RT: 16.504 min Scan# 2366
 Delta R.T. -0.000 min
 Lab File: BM032122.D
 Acq: 21 Sep 2021 20:06

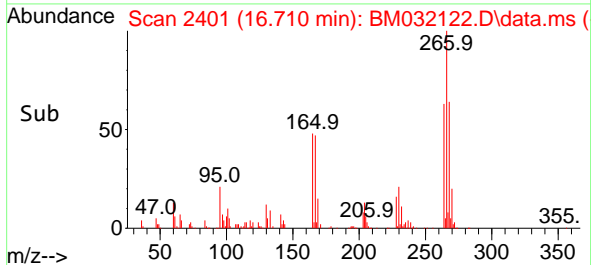
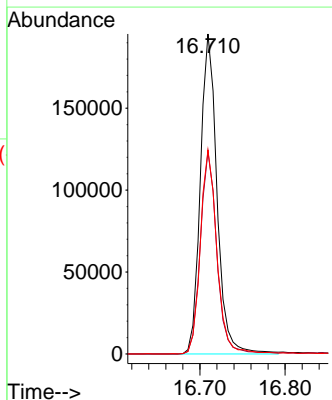
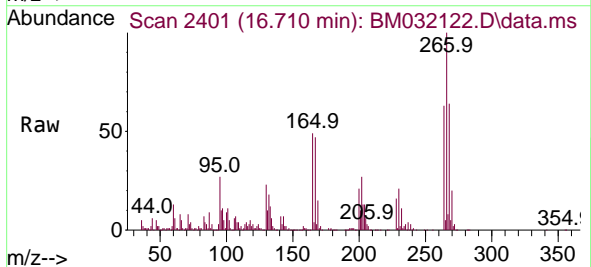
Instrument :
 BNA_M
 ClientSampled :
 SSTD040028

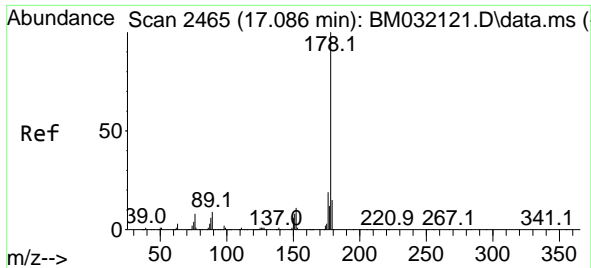
Tgt Ion	Resp	Lower	Upper
200	471164		
173	26.8	18.7	28.1
215	46.8	38.9	58.3



#71
 Pentachlorophenol
 Concen: 32.086 ng/uI
 RT: 16.710 min Scan# 2401
 Delta R.T. -0.000 min
 Lab File: BM032122.D
 Acq: 21 Sep 2021 20:06

Tgt Ion	Resp	Lower	Upper
266	265523		
264	63.2	48.2	72.4
268	63.8	51.6	77.4



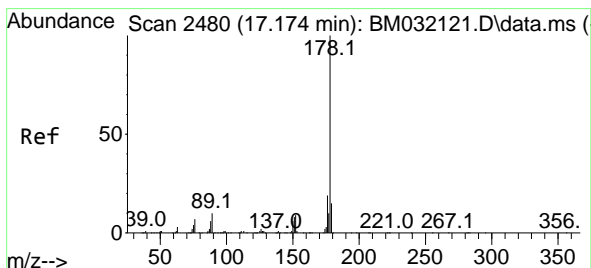
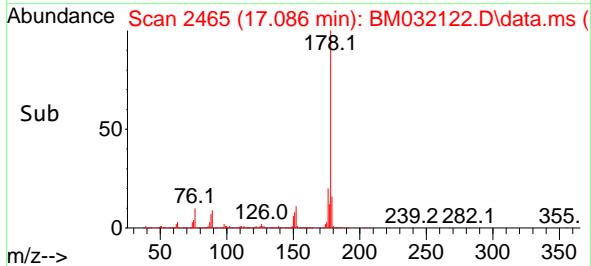
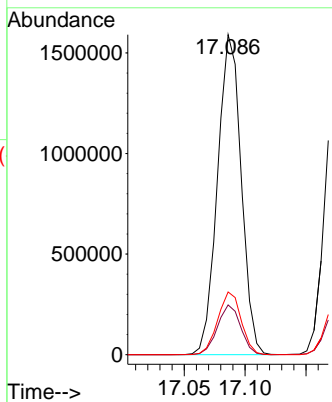
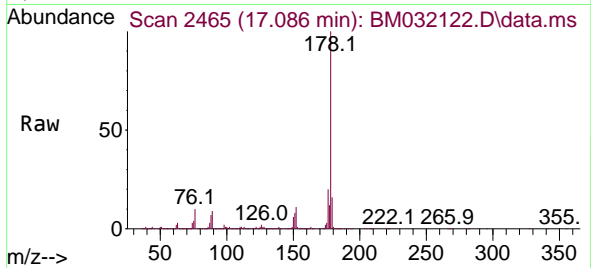


#72
 Phenanthrene
 Concen: 37.037 ng/u1
 RT: 17.086 min Scan# 2465
 Delta R.T. -0.000 min
 Lab File: BM032122.D
 Acq: 21 Sep 2021 20:06

Instrument :
 BNA_M
ClientSampled :
 SSTD040028

Tgt Ion:178 Resp: 2151527

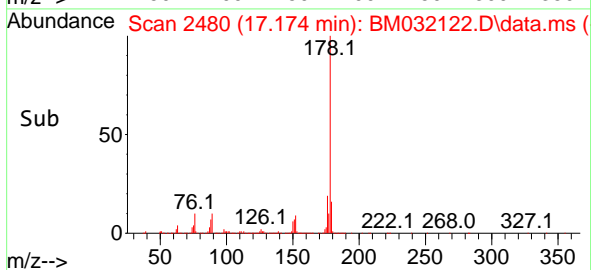
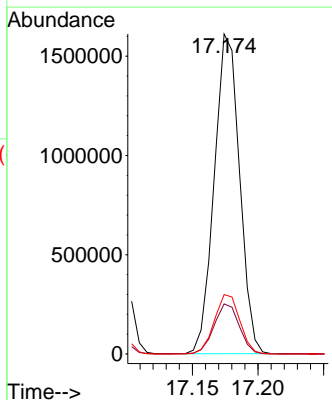
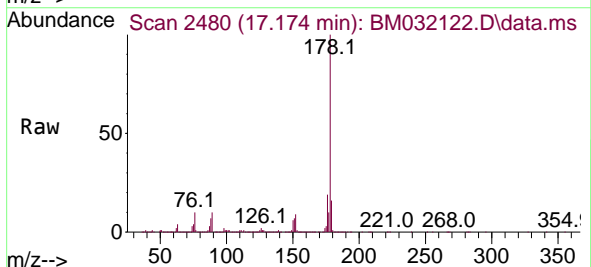
Ion	Ratio	Lower	Upper
178	100		
179	15.5	12.1	18.1
176	19.6	15.2	22.8

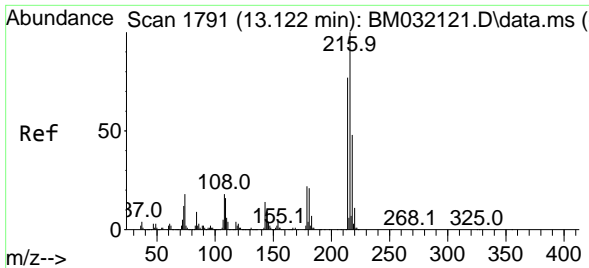


#74
 Anthracene
 Concen: 36.376 ng/u1
 RT: 17.174 min Scan# 2480
 Delta R.T. -0.000 min
 Lab File: BM032122.D
 Acq: 21 Sep 2021 20:06

Tgt Ion:178 Resp: 2162621

Ion	Ratio	Lower	Upper
178	100		
179	15.7	12.1	18.1
176	18.6	15.2	22.8

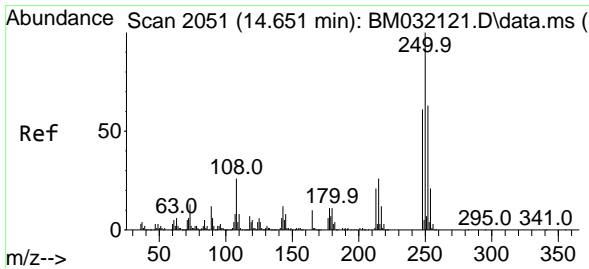
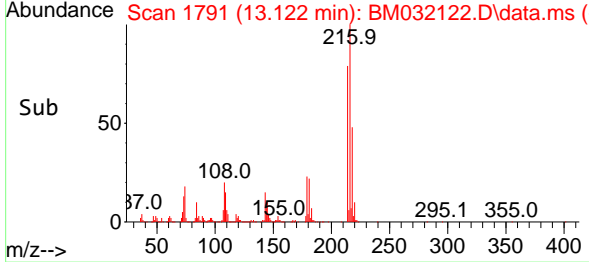
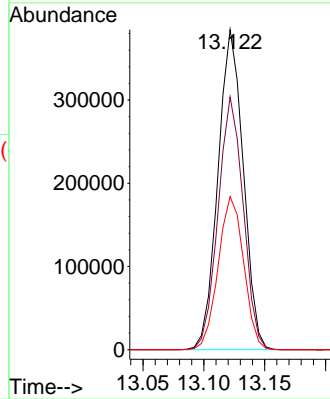
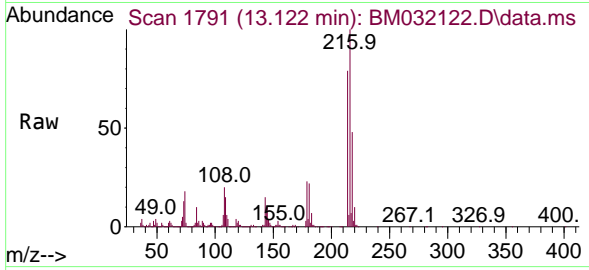




#75
 1,2,3,4-Tetrachlorobenzene
 Concen: 40.216 ng/uL
 RT: 13.122 min Scan# 1791
 Delta R.T. -0.000 min
 Lab File: BM032122.D
 Acq: 21 Sep 2021 20:06

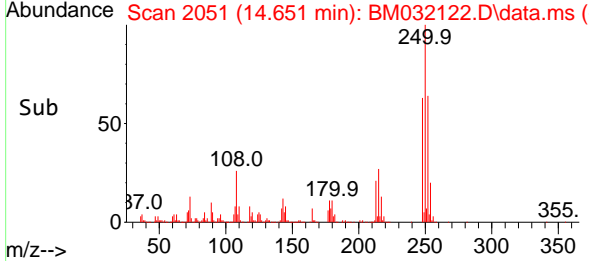
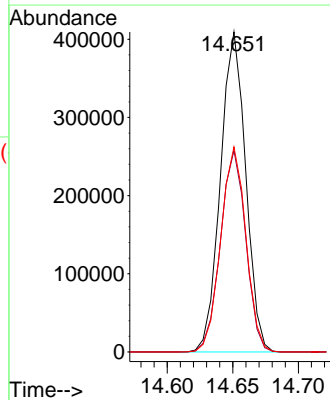
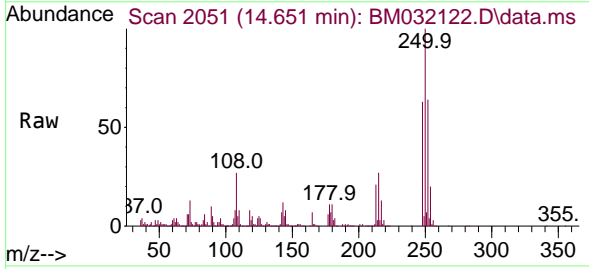
Instrument :
 BNA_M
 ClientSampled :
 SSTD040028

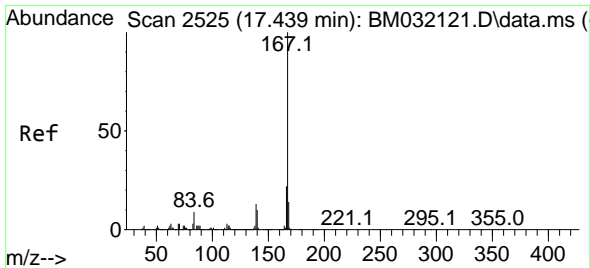
Tgt Ion	Resp	Lower	Upper
216	556615		
216	100		
214	79.0	61.9	92.9
218	47.9	39.5	59.3



#76
 Pentachlorobenzene
 Concen: 37.725 ng/uL
 RT: 14.651 min Scan# 2051
 Delta R.T. -0.000 min
 Lab File: BM032122.D
 Acq: 21 Sep 2021 20:06

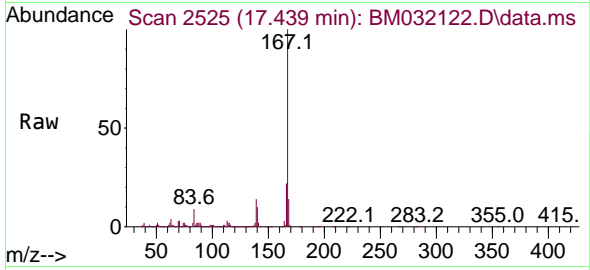
Tgt Ion	Resp	Lower	Upper
250	547766		
250	100		
248	63.0	50.2	75.4
252	64.1	52.2	78.2





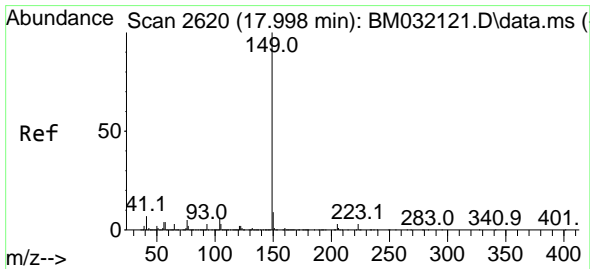
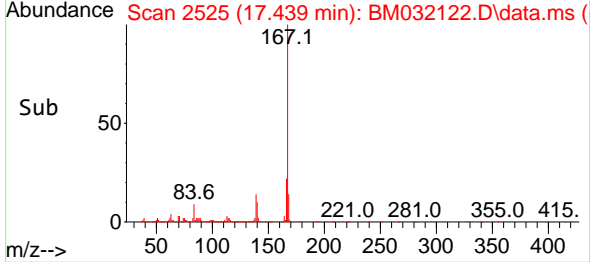
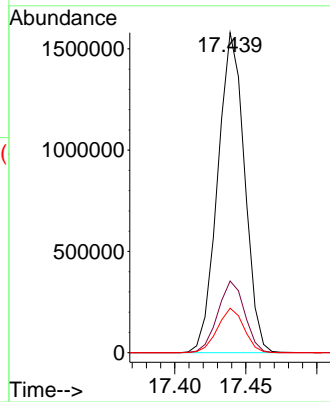
#77
 Carbazole
 Concen: 38.159 ng/u1
 RT: 17.439 min Scan# 2525
 Delta R.T. -0.000 min
 Lab File: BM032122.D
 Acq: 21 Sep 2021 20:06

Instrument :
 BNA_M
ClientSampled :
 SSTD040028



Tgt Ion:167 Resp: 2076272

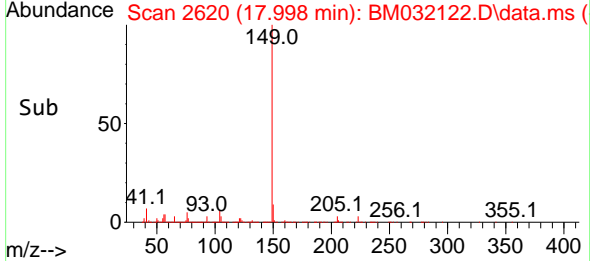
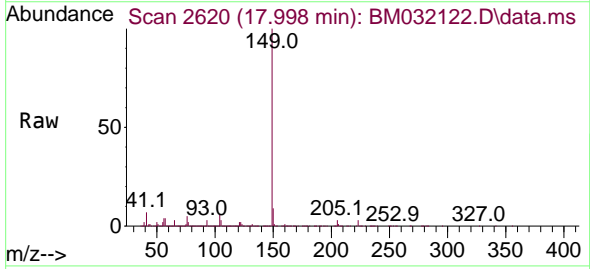
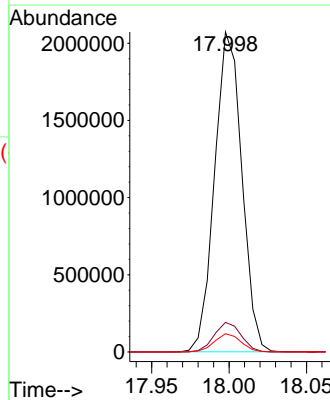
Ion	Ratio	Lower	Upper
167	100		
166	22.4	17.0	25.6
139	13.9	9.9	14.9

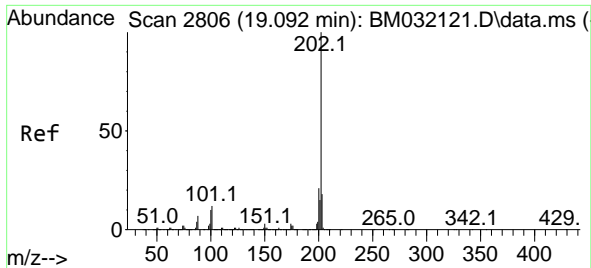


#78
 Di-n-butylphthalate
 Concen: 40.629 ng/u1
 RT: 17.998 min Scan# 2620
 Delta R.T. -0.000 min
 Lab File: BM032122.D
 Acq: 21 Sep 2021 20:06

Tgt Ion:149 Resp: 2533227

Ion	Ratio	Lower	Upper
149	100		
150	9.2	7.3	10.9
104	5.7	4.1	6.1

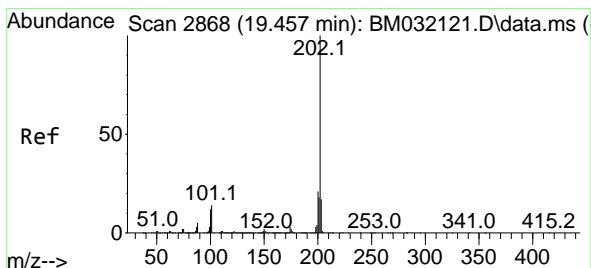
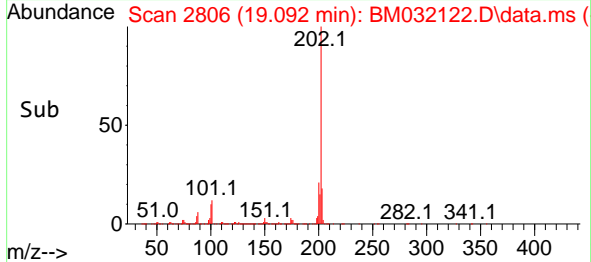
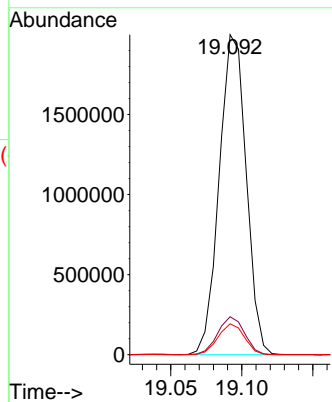
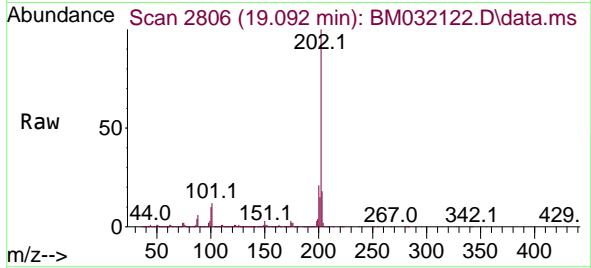




#80
 Fluoranthene
 Concen: 42.149 ng/u1
 RT: 19.092 min Scan# 2806
 Delta R.T. -0.000 min
 Lab File: BM032122.D
 Acq: 21 Sep 2021 20:06

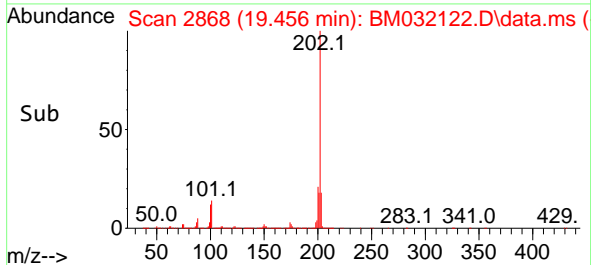
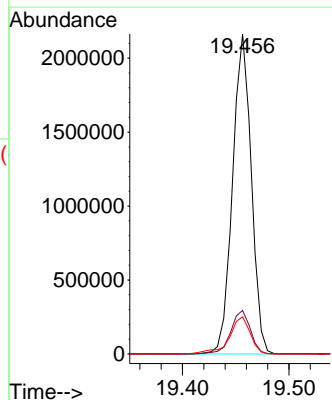
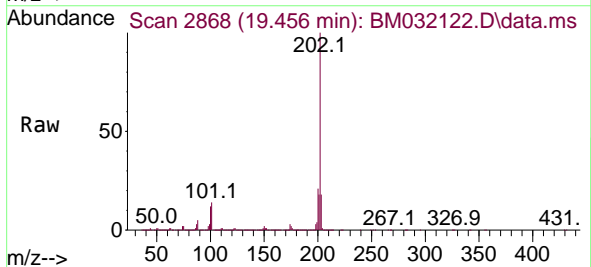
Instrument :
 BNA_M
 ClientSampleId :
 SSTD040028

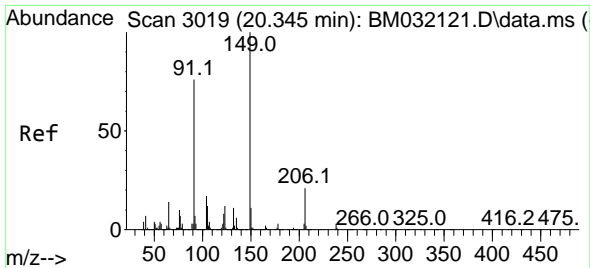
Tgt Ion:202 Resp: 2640909
 Ion Ratio Lower Upper
 202 100
 101 11.9 8.8 13.2
 100 9.6 6.8 10.2



#82
 Pyrene
 Concen: 39.839 ng/u1
 RT: 19.456 min Scan# 2868
 Delta R.T. -0.000 min
 Lab File: BM032122.D
 Acq: 21 Sep 2021 20:06

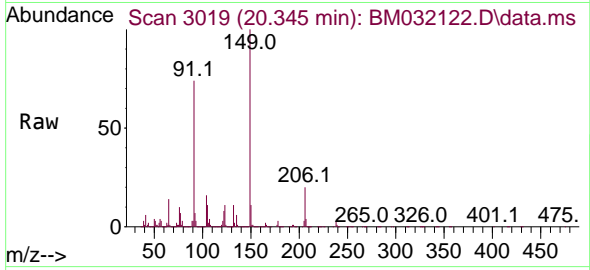
Tgt Ion:202 Resp: 2642809
 Ion Ratio Lower Upper
 202 100
 101 13.6 10.0 15.0
 100 11.6 8.5 12.7



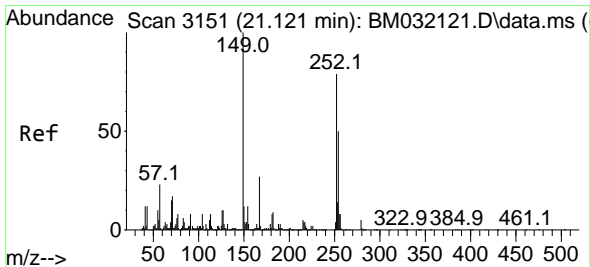
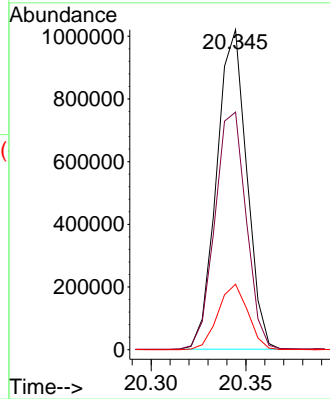
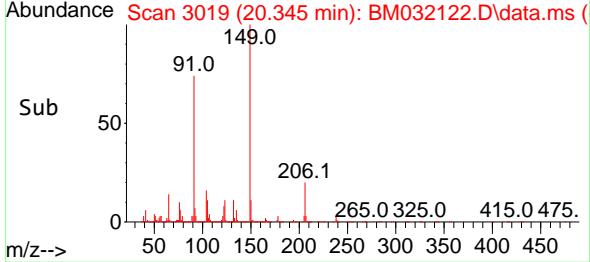


#83
 Butylbenzylphthalate
 Concen: 43.274 ng/ul
 RT: 20.345 min Scan# 3019
 Delta R.T. -0.000 min
 Lab File: BM032122.D
 Acq: 21 Sep 2021 20:06

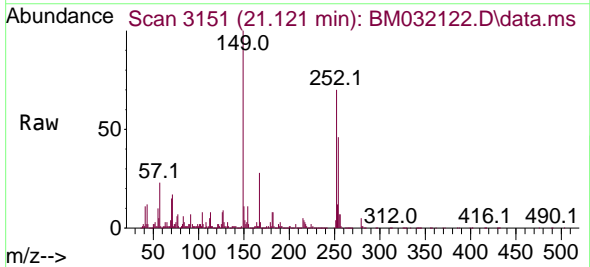
Instrument :
 BNA_M
 ClientSampled :
 SSTD040028



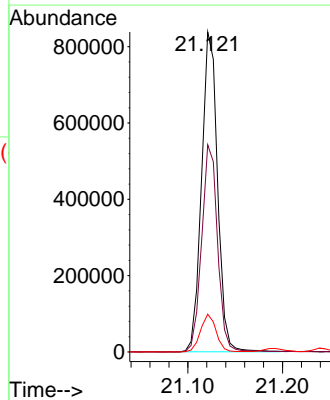
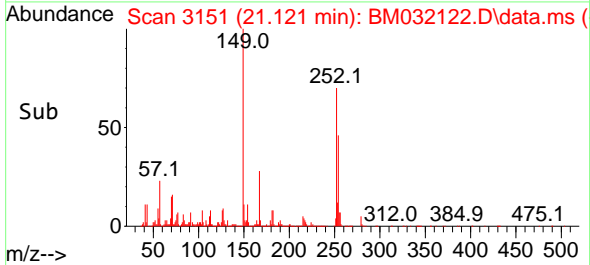
Tgt Ion:149 Resp: 1127185
 Ion Ratio Lower Upper
 149 100
 91 74.3 57.4 86.2
 206 20.4 15.9 23.9

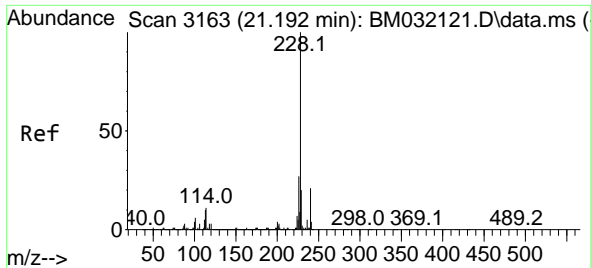


#84
 3,3'-Dichlorobenzidine
 Concen: 39.610 ng/ul
 RT: 21.121 min Scan# 3151
 Delta R.T. -0.000 min
 Lab File: BM032122.D
 Acq: 21 Sep 2021 20:06



Tgt Ion:252 Resp: 981678
 Ion Ratio Lower Upper
 252 100
 254 64.8 49.9 74.9
 126 11.8 8.9 13.3



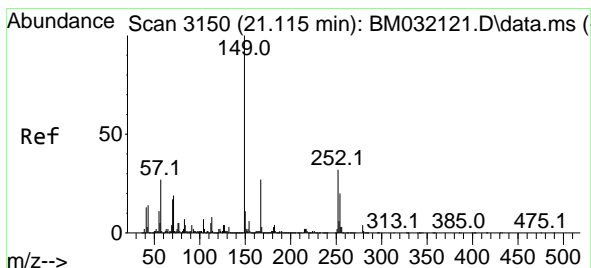
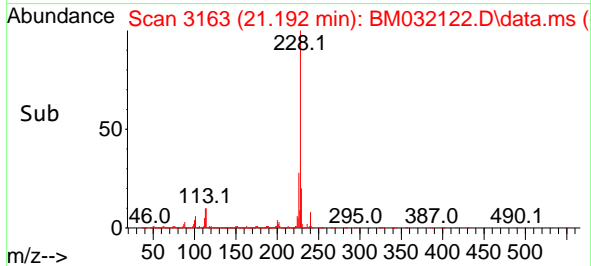
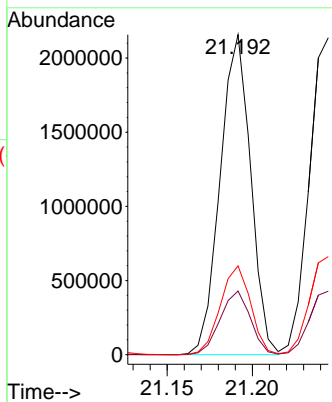
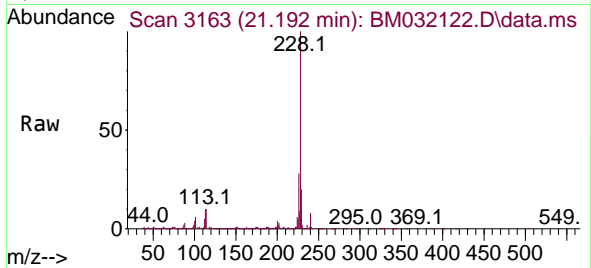


#85
 Benzo(a)anthracene
 Concen: 39.185 ng/ul
 RT: 21.192 min Scan# 3163
 Delta R.T. -0.000 min
 Lab File: BM032122.D
 Acq: 21 Sep 2021 20:06

Instrument :
 BNA_M
 ClientSampled :
 SSTD040028

Tgt Ion:228 Resp: 2683286

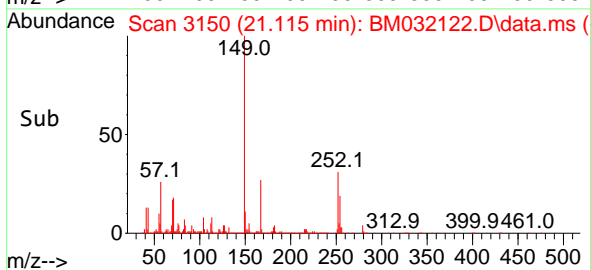
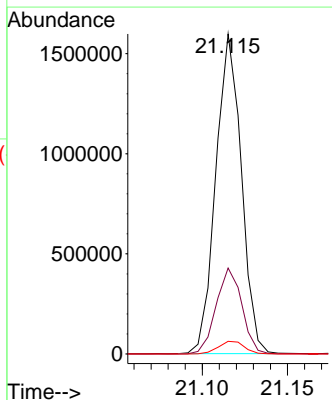
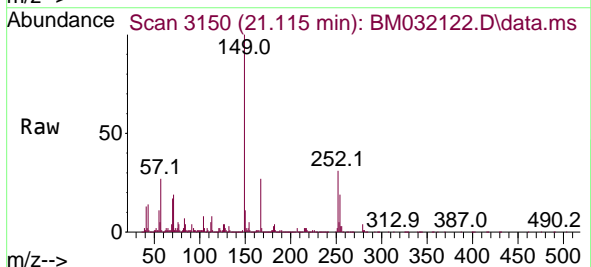
Ion	Ratio	Lower	Upper
228	100		
229	19.9	16.0	24.0
226	27.8	22.2	33.2

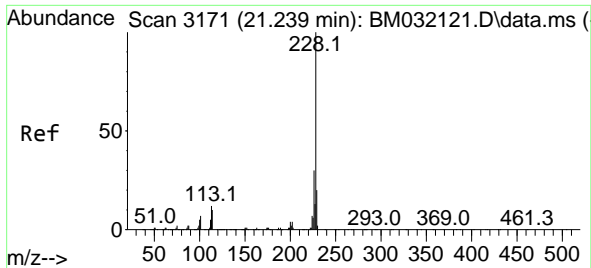


#86
 Bis(2-ethylhexyl)phthalate
 Concen: 39.618 ng/ul
 RT: 21.115 min Scan# 3150
 Delta R.T. -0.000 min
 Lab File: BM032122.D
 Acq: 21 Sep 2021 20:06

Tgt Ion:149 Resp: 1664267

Ion	Ratio	Lower	Upper
149	100		
167	26.8	20.7	31.1
279	3.9	3.0	4.4



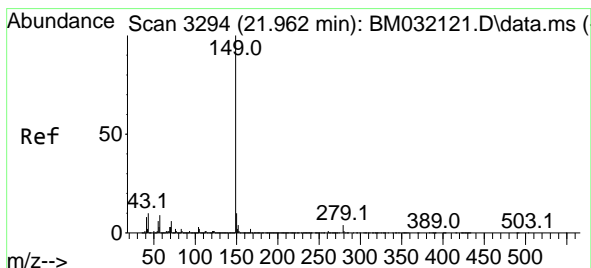
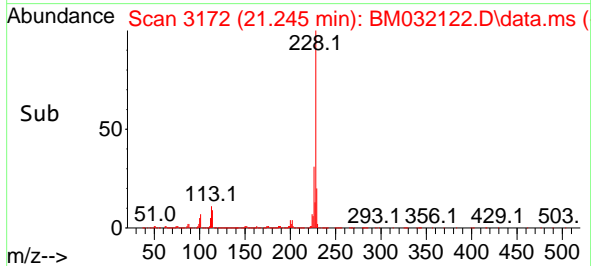
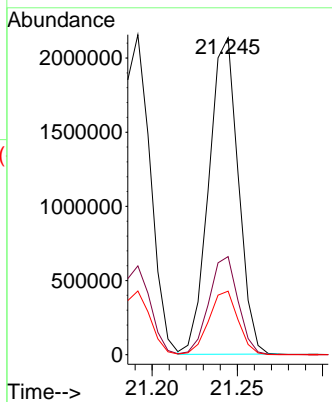
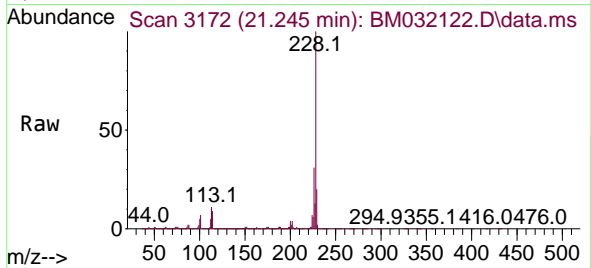


#87
 Chrysene
 Concen: 39.041 ng/ul
 RT: 21.245 min Scan# 3172
 Delta R.T. 0.006 min
 Lab File: BM032122.D
 Acq: 21 Sep 2021 20:06

Instrument :
 BNA_M
 ClientSampled :
 SSTD040028

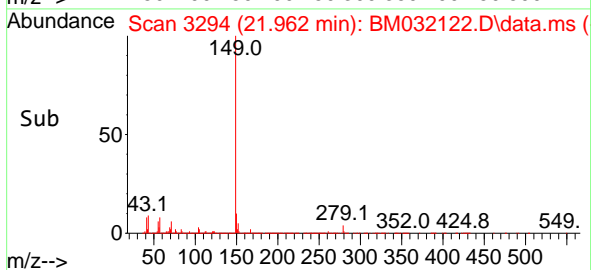
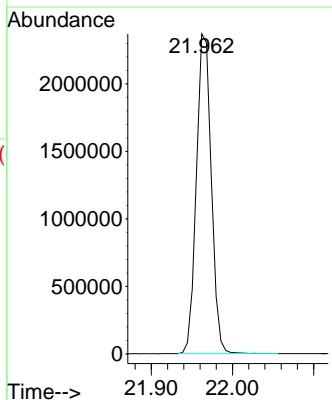
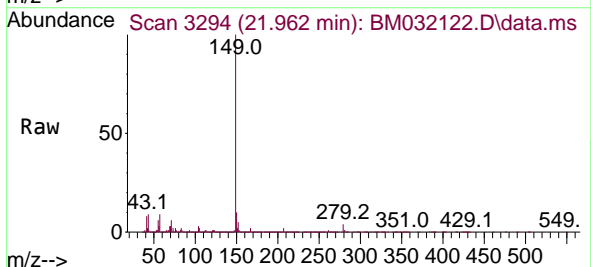
Tgt Ion:228 Resp: 2571457

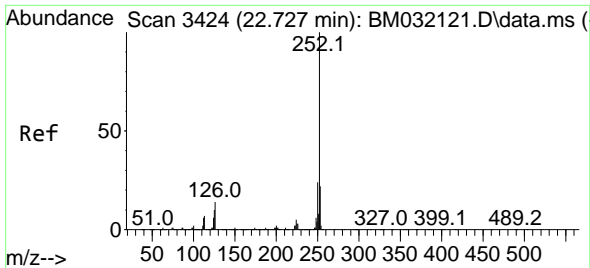
Ion	Ratio	Lower	Upper
228	100		
226	31.0	23.6	35.4
229	20.0	15.9	23.9



#89
 Di-n-octyl phthalate
 Concen: 35.848 ng/ul
 RT: 21.962 min Scan# 3294
 Delta R.T. -0.000 min
 Lab File: BM032122.D
 Acq: 21 Sep 2021 20:06

Tgt Ion:149 Resp: 3026901



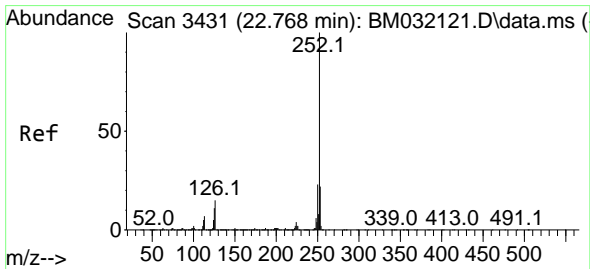
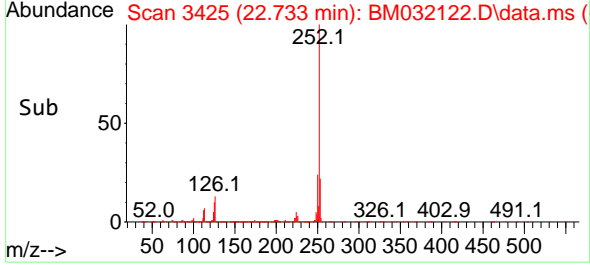
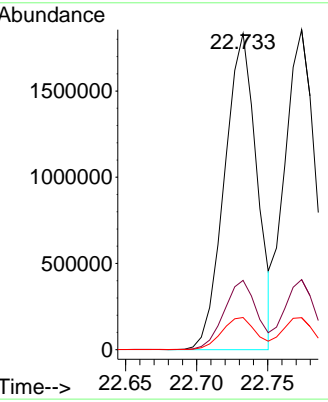
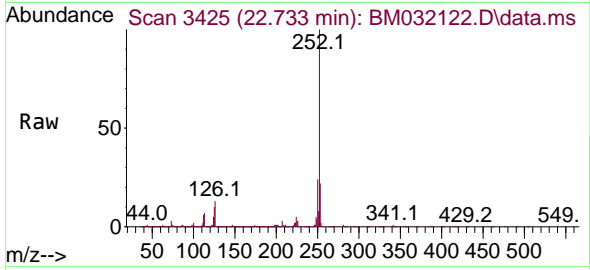


#90
 Benzo(b)fluoranthene
 Concen: 36.796 ng/ul
 RT: 22.733 min Scan# 3425
 Delta R.T. 0.006 min
 Lab File: BM032122.D
 Acq: 21 Sep 2021 20:06

Instrument :
 BNA_M
ClientSampled :
 SSTD040028

Tgt Ion:252 Resp: 2901534

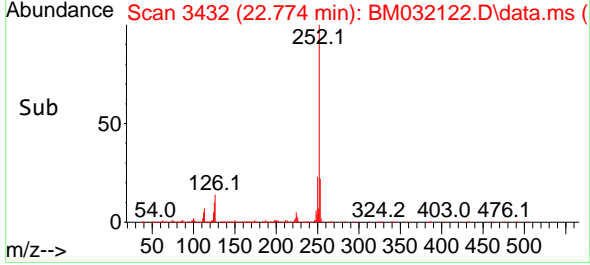
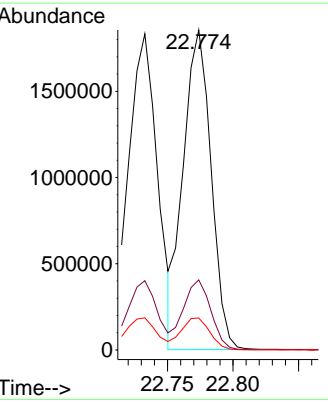
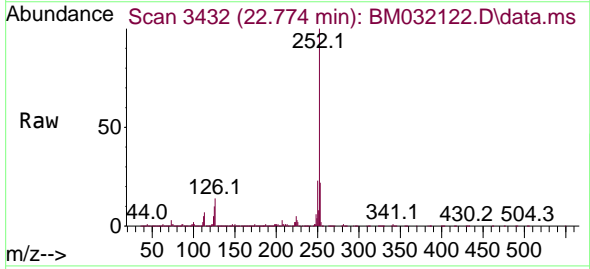
Ion	Ratio	Lower	Upper
252	100		
253	21.9	17.8	26.6
125	10.2	7.7	11.5

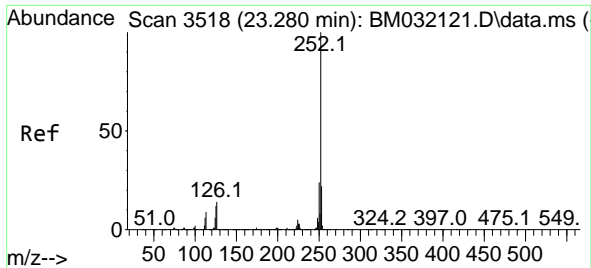


#91
 Benzo(k)fluoranthene
 Concen: 35.888 ng/ul
 RT: 22.774 min Scan# 3432
 Delta R.T. 0.006 min
 Lab File: BM032122.D
 Acq: 21 Sep 2021 20:06

Tgt Ion:252 Resp: 2739651

Ion	Ratio	Lower	Upper
252	100		
253	21.9	17.4	26.2
125	10.0	7.9	11.9

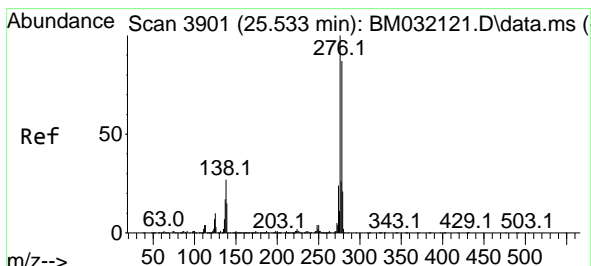
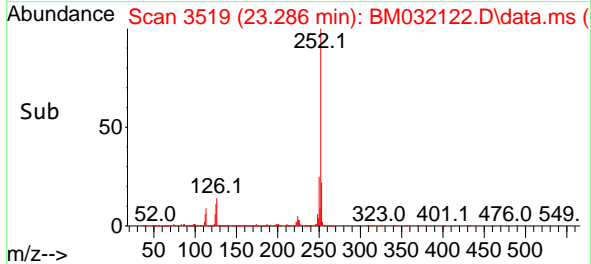
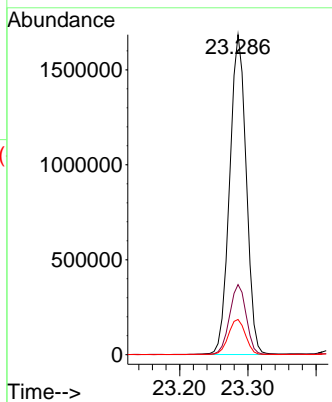
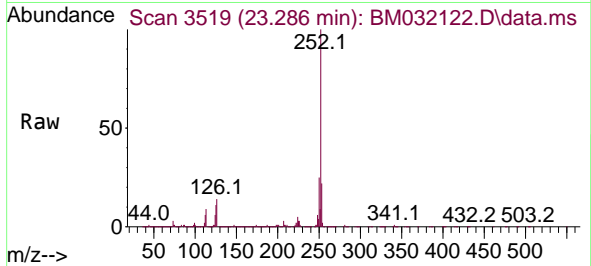




#93
 Benzo(a)pyrene
 Concen: 40.044 ng/u1
 RT: 23.286 min Scan# 3519
 Delta R.T. 0.006 min
 Lab File: BM032122.D
 Acq: 21 Sep 2021 20:06

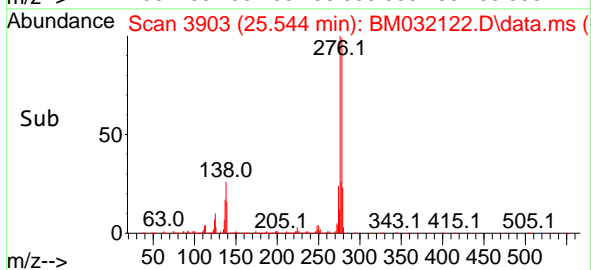
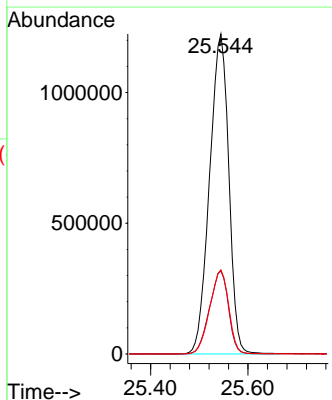
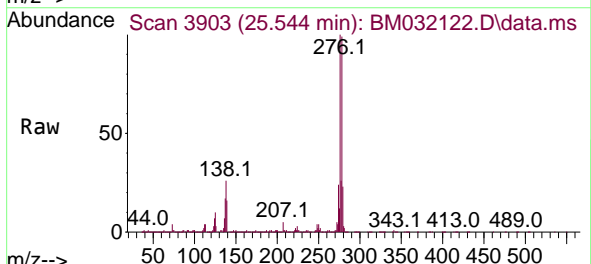
Instrument :
 BNA_M
 ClientSampled :
 SST040028

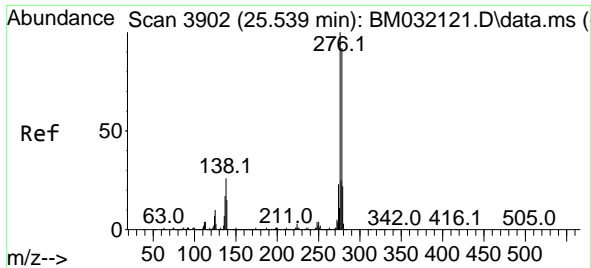
Tgt Ion:252 Resp: 2851440
 Ion Ratio Lower Upper
 252 100
 253 21.9 17.5 26.3
 125 11.0 8.6 13.0



#94
 Indeno(1,2,3-cd)pyrene
 Concen: 36.828 ng/u1
 RT: 25.544 min Scan# 3903
 Delta R.T. 0.011 min
 Lab File: BM032122.D
 Acq: 21 Sep 2021 20:06

Tgt Ion:276 Resp: 3356352
 Ion Ratio Lower Upper
 276 100
 138 25.9 19.5 29.3
 277 26.3 19.6 29.4

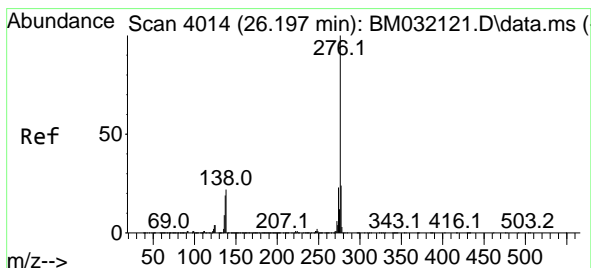
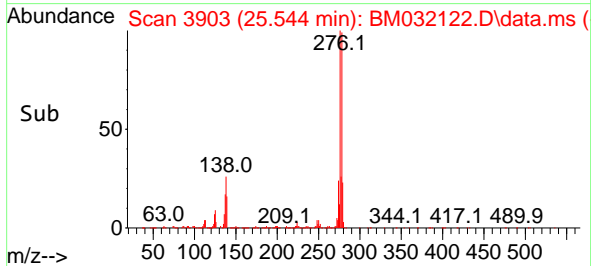
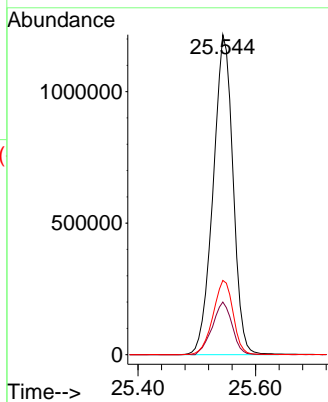
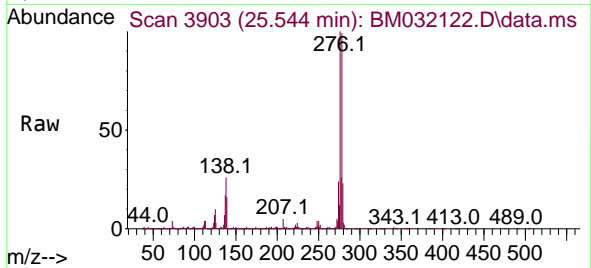




#95
 Dibenzo(a,h)anthracene
 Concen: 37.302 ng/ul
 RT: 25.544 min Scan# 3903
 Delta R.T. 0.006 min
 Lab File: BM032122.D
 Acq: 21 Sep 2021 20:06

Instrument :
 BNA_M
 ClientSampled :
 SSTD040028

Tgt Ion	Resp	Lower	Upper
278	100		
139	16.4	12.8	19.2
279	23.2	19.1	28.7



#96
 Benzo(g,h,i)perylene
 Concen: 38.607 ng/ul
 RT: 26.209 min Scan# 4016
 Delta R.T. 0.011 min
 Lab File: BM032122.D
 Acq: 21 Sep 2021 20:06

Tgt Ion	Resp	Lower	Upper
276	100		
138	22.0	16.5	24.7
277	23.8	18.5	27.7

