

Data Path : Z:\svoasrv\HPCHEM1\BNA_M\Data\BM092324\
 Data File : BM047606.D
 Acq On : 23 Sep 2024 16:23
 Operator : RC/JU
 Sample : P4139-02
 Misc :
 ALS Vial : 9 Sample Multiplier: 1

Instrument :
 BNA_M
 ClientSampleId :
 371

Quant Time: Sep 23 17:02:23 2024
 Quant Method : Z:\svoasrv\HPCHEM1\BNA_M\Methods\8270-BM092024.M
 Quant Title : ASP BNA STANDARDS FOR 5 POINT CALIBRATION
 QLast Update : Sat Sep 21 02:22:39 2024
 Response via : Initial Calibration

Compound	R.T.	QIon	Response	Conc	Units	Dev(Min)
Internal Standards						
1) 1,4-Dichlorobenzene-d4	7.834	152	298364	20.000	ng	-0.01
21) Naphthalene-d8	10.633	136	1138621	20.000	ng	0.00
39) Acenaphthene-d10	14.468	164	601031	20.000	ng	0.00
64) Phenanthrene-d10	17.204	188	1171927	20.000	ng	0.00
76) Chrysene-d12	21.427	240	993688	20.000	ng	-0.01
86) Perylene-d12	24.444	264	1073973	20.000	ng	-0.02
System Monitoring Compounds						
5) 2-Fluorophenol	5.410	112	1628488	83.642	ng	-0.01
7) Phenol-d6	6.998	99	2176748	84.850	ng	0.00
23) Nitrobenzene-d5	8.986	82	1323908	57.881	ng	-0.01
42) 2,4,6-Tribromophenol	15.951	330	434723	78.112	ng	0.00
45) 2-Fluorobiphenyl	13.092	172	2523385	59.406	ng	-0.01
79) Terphenyl-d14	19.821	244	3754272	67.790	ng	0.00

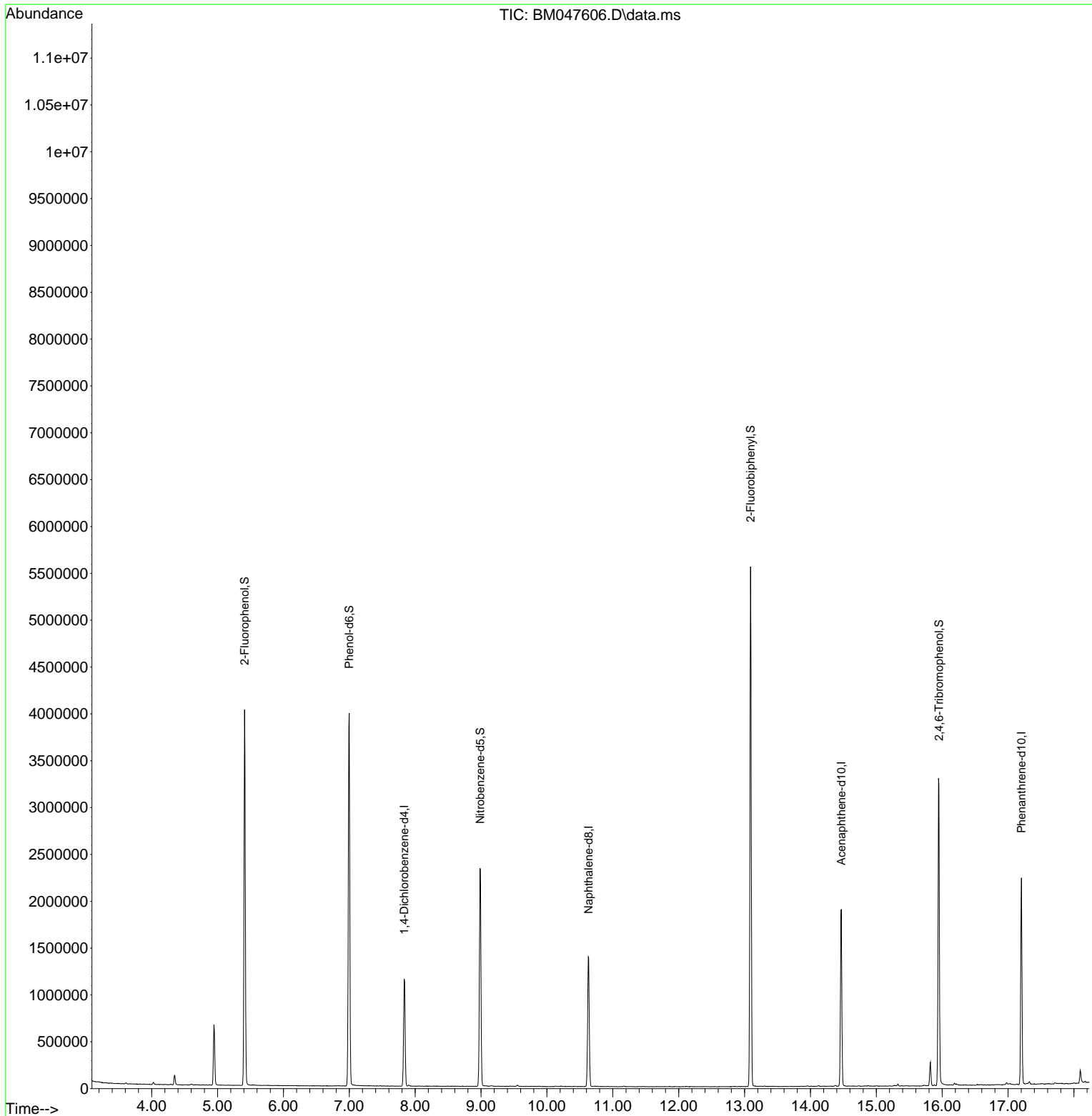
Target Compounds Qvalue

(#) = qualifier out of range (m) = manual integration (+) = signals summed

Data Path : Z:\svoasrv\HPCHEM1\BNA_M\Data\BM092324\
 Data File : BM047606.D
 Acq On : 23 Sep 2024 16:23
 Operator : RC/JU
 Sample : P4139-02
 Misc :
 ALS Vial : 9 Sample Multiplier: 1

Instrument :
 BNA_M
 ClientSampleId :
 371

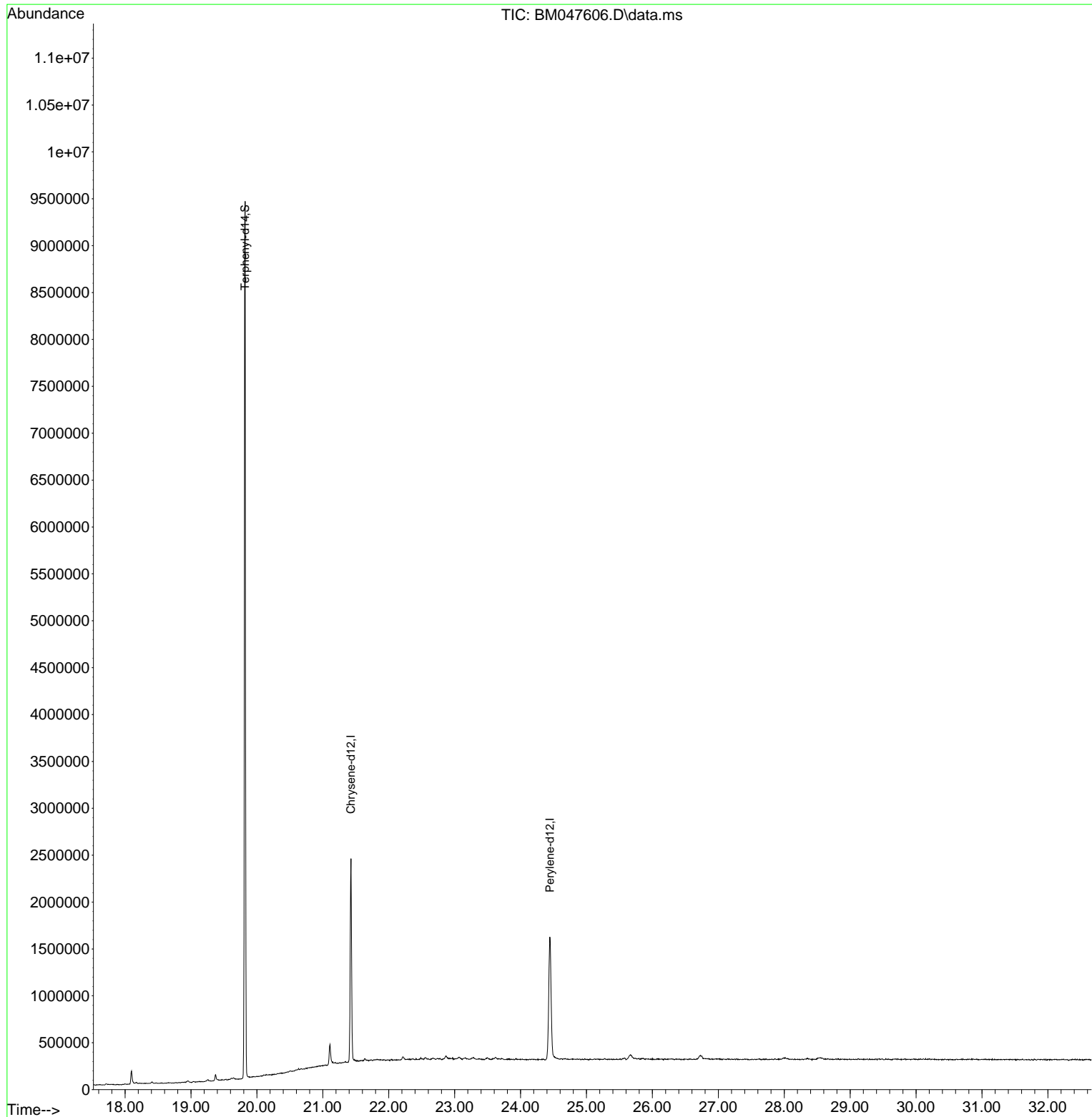
Quant Time: Sep 23 17:02:23 2024
 Quant Method : Z:\svoasrv\HPCHEM1\BNA_M\Methods\8270-BM092024.M
 Quant Title : ASP BNA STANDARDS FOR 5 POINT CALIBRATION
 QLast Update : Sat Sep 21 02:22:39 2024
 Response via : Initial Calibration

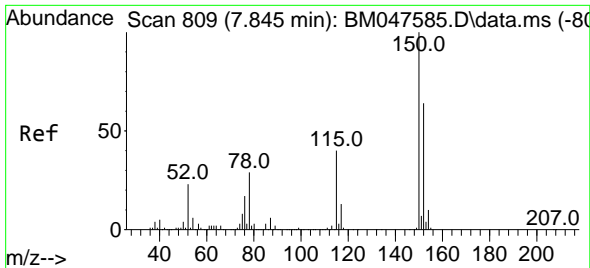


Data Path : Z:\svoasrv\HPCHEM1\BNA_M\Data\BM092324\
 Data File : BM047606.D
 Acq On : 23 Sep 2024 16:23
 Operator : RC/JU
 Sample : P4139-02
 Misc :
 ALS Vial : 9 Sample Multiplier: 1

Instrument :
 BNA_M
ClientSampleId :
 371

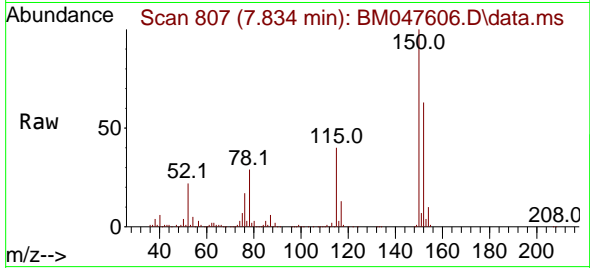
Quant Time: Sep 23 17:02:23 2024
 Quant Method : Z:\svoasrv\HPCHEM1\BNA_M\Methods\8270-BM092024.M
 Quant Title : ASP BNA STANDARDS FOR 5 POINT CALIBRATION
 QLast Update : Sat Sep 21 02:22:39 2024
 Response via : Initial Calibration



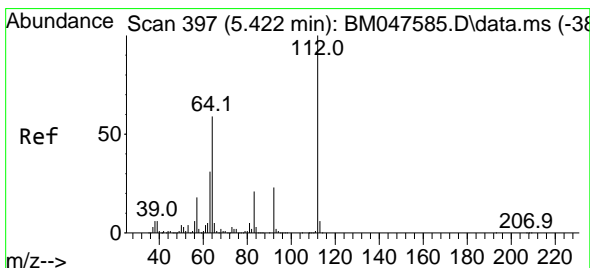
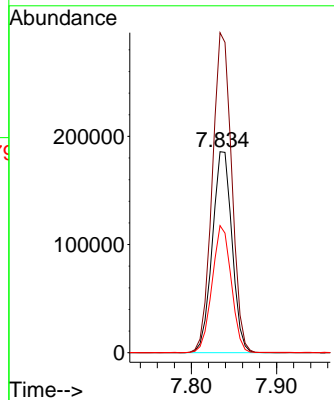
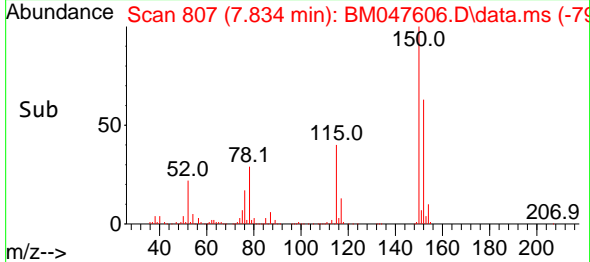


#1
 1,4-Dichlorobenzene-d4
 Concen: 20.000 ng
 RT: 7.834 min Scan# 807
 Delta R.T. -0.011 min
 Lab File: BM047606.D
 Acq: 23 Sep 2024 16:23

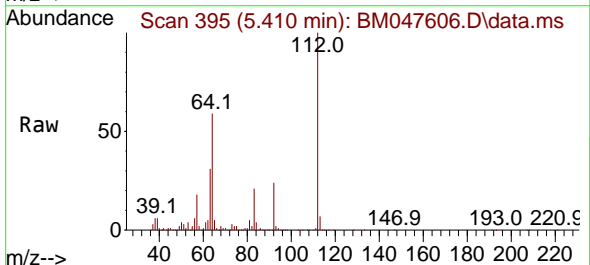
Instrument :
 BNA_M
 ClientSampleId :
 371



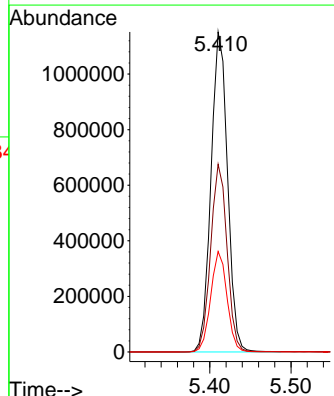
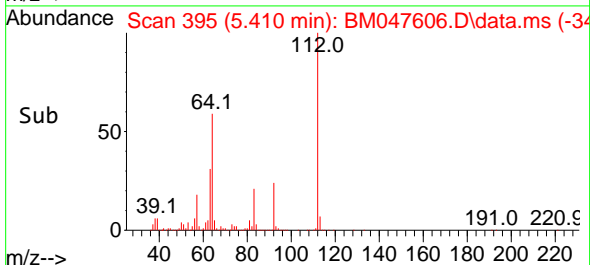
Tgt Ion:152 Resp: 298364
 Ion Ratio Lower Upper
 152 100
 150 159.2 124.5 186.7
 115 63.3 49.9 74.9

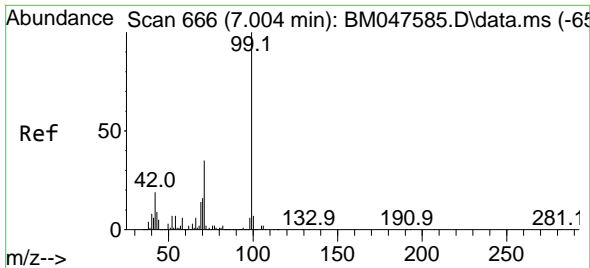


#5
 2-Fluorophenol
 Concen: 83.642 ng
 RT: 5.410 min Scan# 395
 Delta R.T. -0.012 min
 Lab File: BM047606.D
 Acq: 23 Sep 2024 16:23



Tgt Ion:112 Resp: 1628488
 Ion Ratio Lower Upper
 112 100
 64 58.7 46.8 70.2
 63 31.4 25.2 37.8



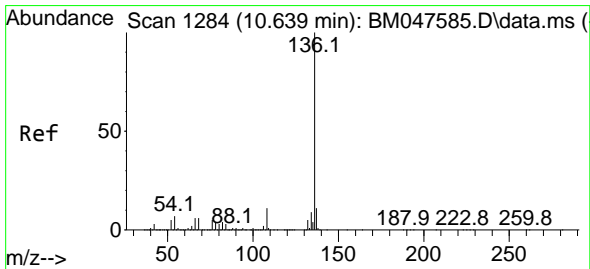
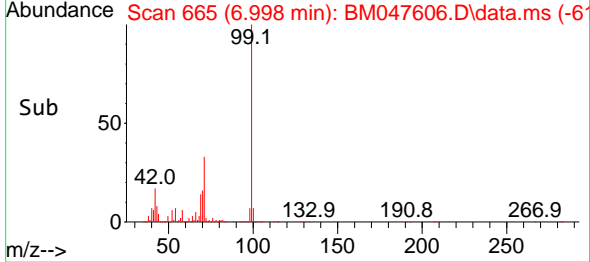
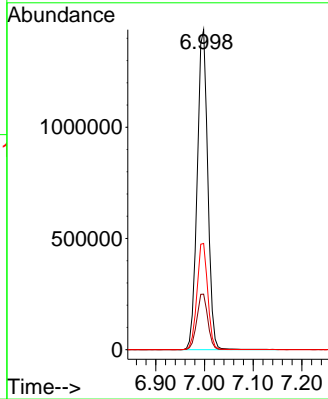
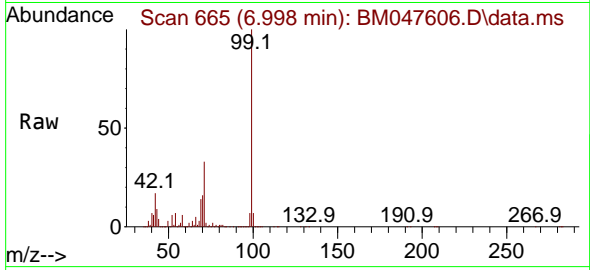


#7
 Phenol-d6
 Concen: 84.850 ng
 RT: 6.998 min Scan# 60
 Delta R.T. -0.006 min
 Lab File: BM047606.D
 Acq: 23 Sep 2024 16:23

Instrument :
 BNA_M
 ClientSampleId :
 371

Tgt Ion: 99 Resp: 2176748

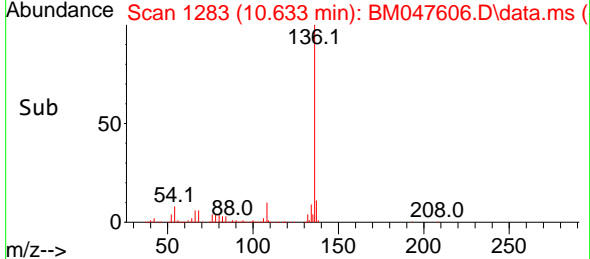
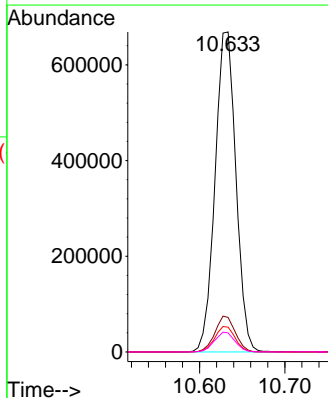
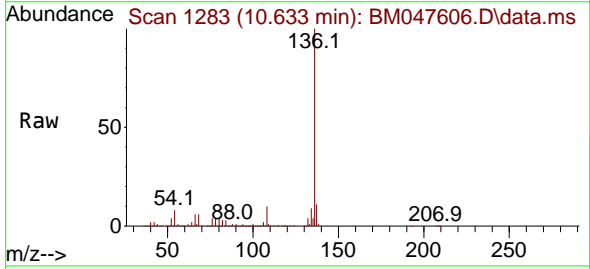
Ion	Ratio	Lower	Upper
99	100		
42	17.4	15.3	22.9
71	33.2	27.8	41.6

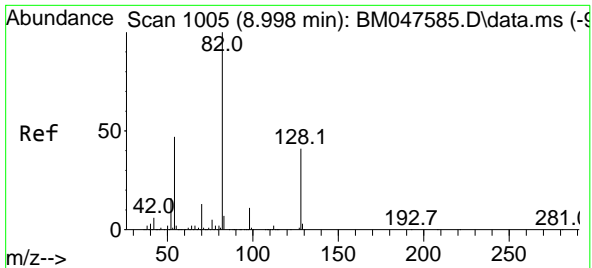


#21
 Naphthalene-d8
 Concen: 20.000 ng
 RT: 10.633 min Scan# 1283
 Delta R.T. -0.006 min
 Lab File: BM047606.D
 Acq: 23 Sep 2024 16:23

Tgt Ion: 136 Resp: 1138621

Ion	Ratio	Lower	Upper
136	100		
137	10.8	9.0	13.4
54	7.8	6.0	9.0
68	6.0	4.6	7.0



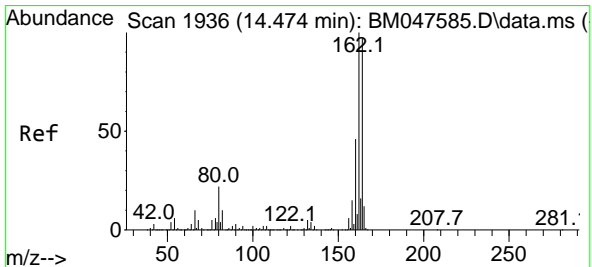
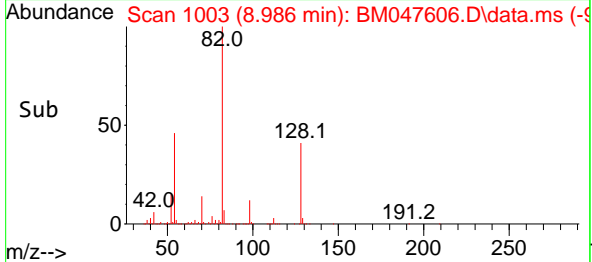
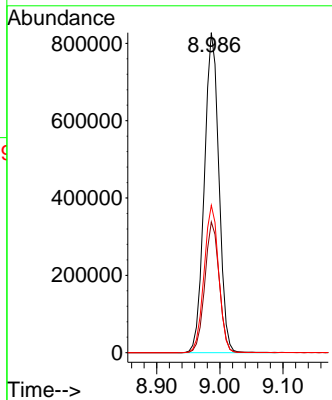
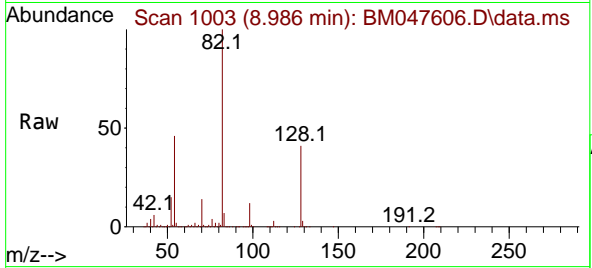


#23
 Nitrobenzene-d5
 Concen: 57.881 ng
 RT: 8.986 min Scan# 1003
 Delta R.T. -0.012 min
 Lab File: BM047606.D
 Acq: 23 Sep 2024 16:23

Instrument :
 BNA_M
 ClientSampleId :
 371

Tgt Ion: 82 Resp: 1323908

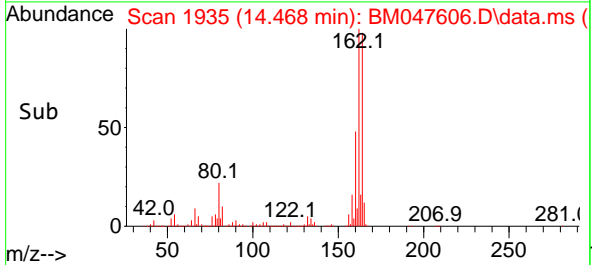
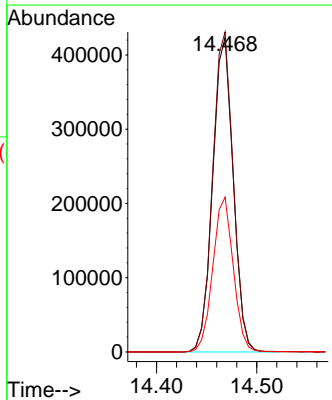
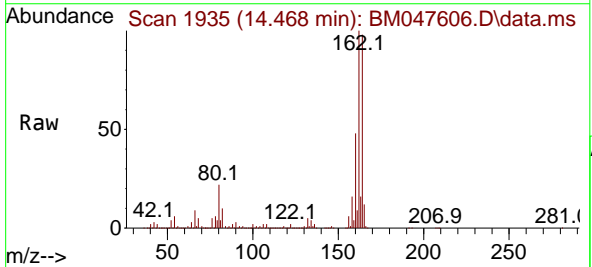
Ion	Ratio	Lower	Upper
82	100		
128	40.9	32.5	48.7
54	46.0	37.5	56.3

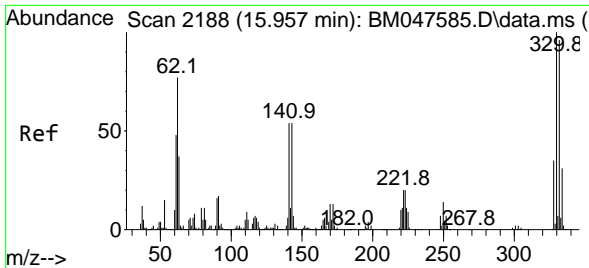


#39
 Acenaphthene-d10
 Concen: 20.000 ng
 RT: 14.468 min Scan# 1935
 Delta R.T. -0.006 min
 Lab File: BM047606.D
 Acq: 23 Sep 2024 16:23

Tgt Ion: 164 Resp: 601031

Ion	Ratio	Lower	Upper
164	100		
162	101.8	82.6	123.8
160	49.2	37.8	56.6

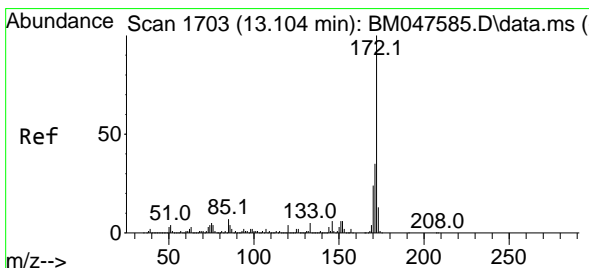
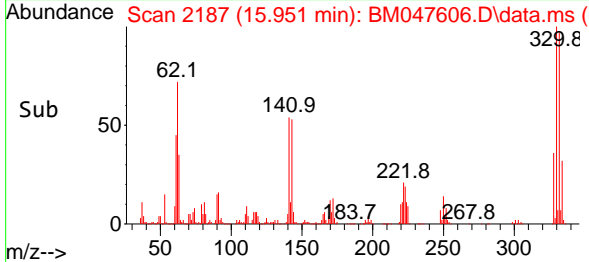
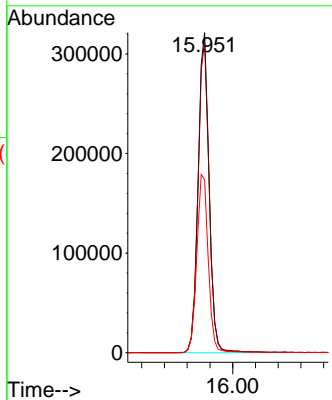
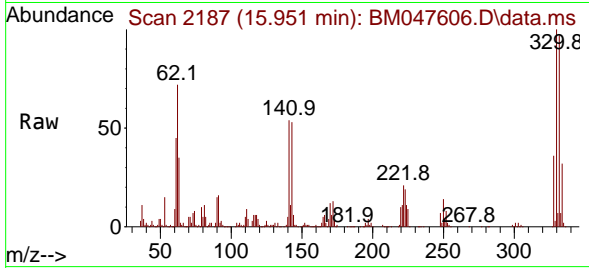




#42
 2,4,6-Tribromophenol
 Concen: 78.112 ng
 RT: 15.951 min Scan# 21
 Delta R.T. -0.006 min
 Lab File: BM047606.D
 Acq: 23 Sep 2024 16:23

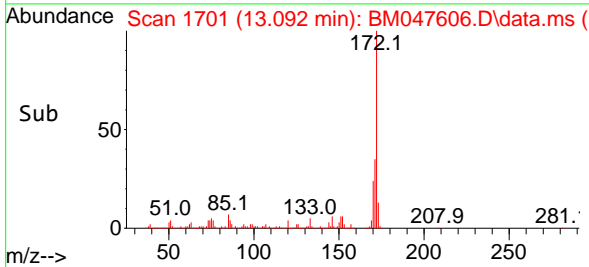
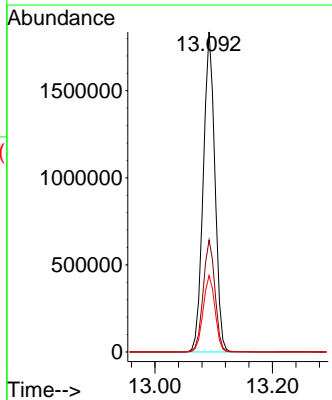
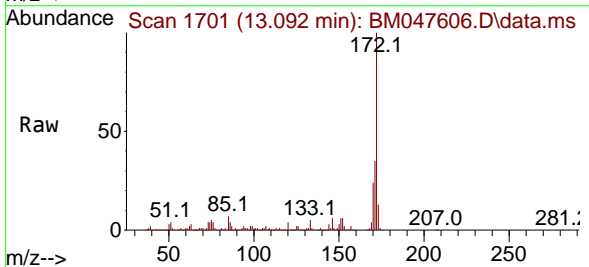
Instrument :
 BNA_M
 ClientSampleId :
 371

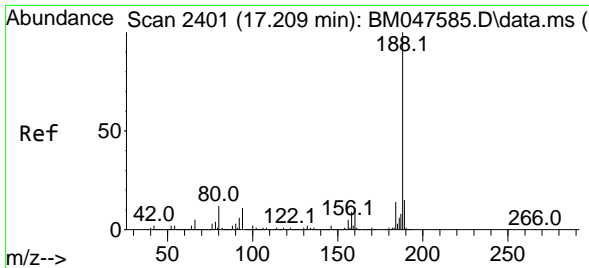
Tgt Ion:330 Resp: 434723
 Ion Ratio Lower Upper
 330 100
 332 97.7 77.0 115.4
 141 58.1 45.9 68.9



#45
 2-Fluorobiphenyl
 Concen: 59.406 ng
 RT: 13.092 min Scan# 1701
 Delta R.T. -0.012 min
 Lab File: BM047606.D
 Acq: 23 Sep 2024 16:23

Tgt Ion:172 Resp: 2523385
 Ion Ratio Lower Upper
 172 100
 171 35.0 28.1 42.1
 170 23.9 19.0 28.6



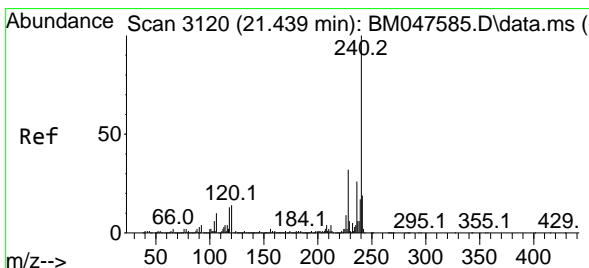
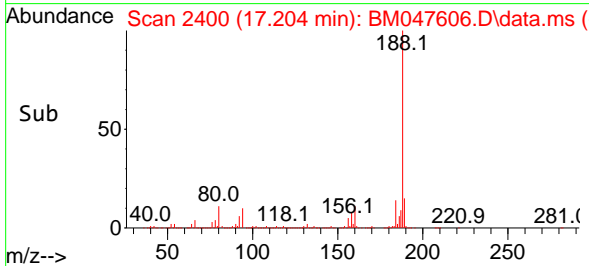
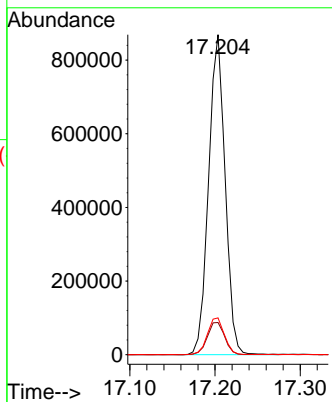
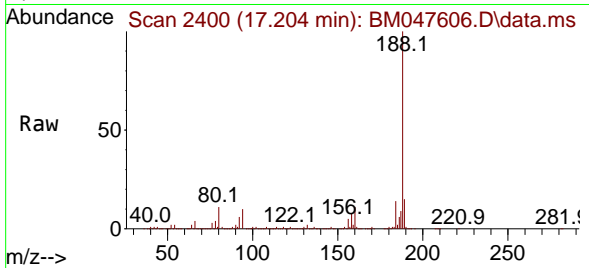


#64
 Phenanthrene-d10
 Concen: 20.000 ng
 RT: 17.204 min Scan# 2400
 Delta R.T. -0.005 min
 Lab File: BM047606.D
 Acq: 23 Sep 2024 16:23

Instrument :
 BNA_M
 ClientSampleId :
 371

Tgt Ion:188 Resp: 1171927

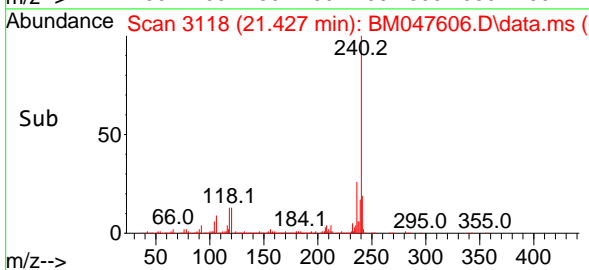
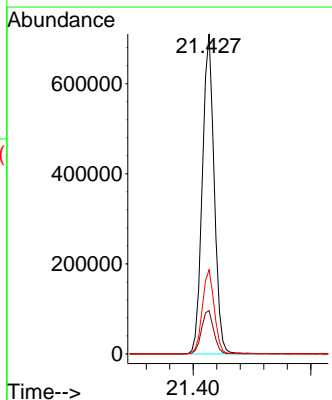
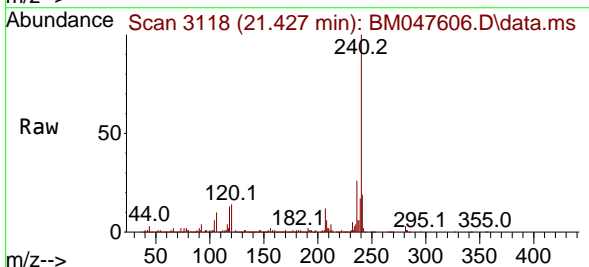
Ion	Ratio	Lower	Upper
188	100		
94	10.1	8.6	13.0
80	11.5	9.9	14.9

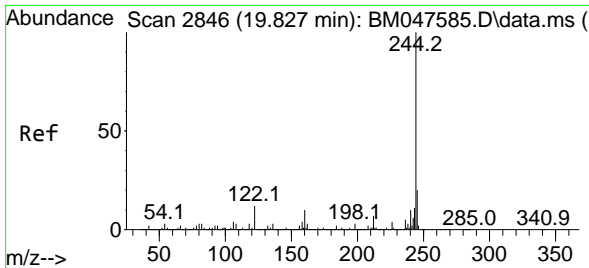


#76
 Chrysene-d12
 Concen: 20.000 ng
 RT: 21.427 min Scan# 3118
 Delta R.T. -0.012 min
 Lab File: BM047606.D
 Acq: 23 Sep 2024 16:23

Tgt Ion:240 Resp: 993688

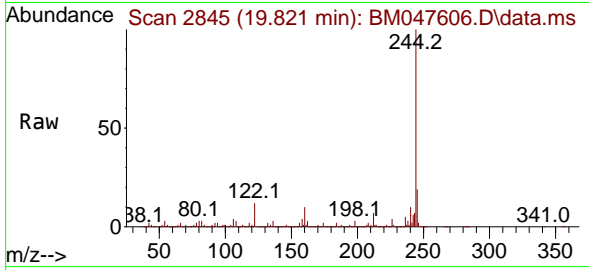
Ion	Ratio	Lower	Upper
240	100		
120	13.5	10.8	16.2
236	26.3	20.8	31.2



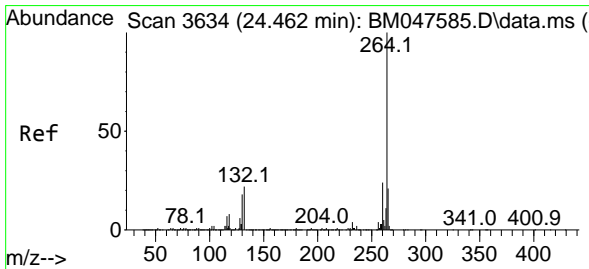
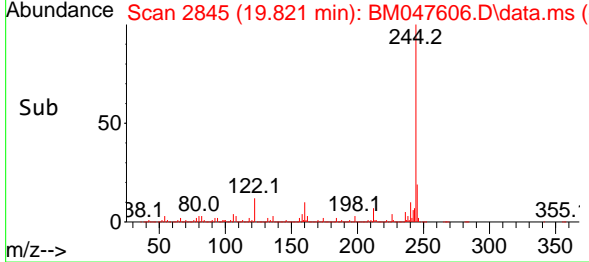
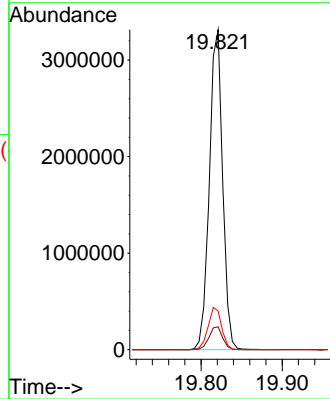


#79
 Terphenyl-d14
 Concen: 67.790 ng
 RT: 19.821 min Scan# 21
 Delta R.T. -0.006 min
 Lab File: BM047606.D
 Acq: 23 Sep 2024 16:23

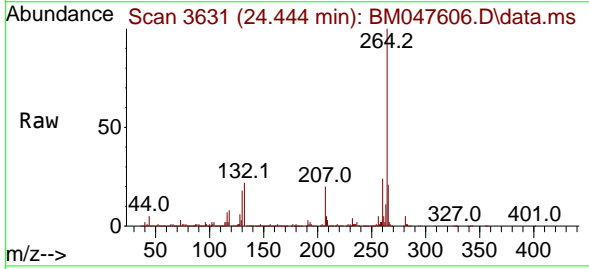
Instrument :
 BNA_M
 ClientSampleId :
 371



Tgt Ion:244 Resp: 3754272
 Ion Ratio Lower Upper
 244 100
 212 7.1 6.0 9.0
 122 12.1 10.0 15.0



#86
 Perylene-d12
 Concen: 20.000 ng
 RT: 24.444 min Scan# 3631
 Delta R.T. -0.018 min
 Lab File: BM047606.D
 Acq: 23 Sep 2024 16:23



Tgt Ion:264 Resp: 1073973
 Ion Ratio Lower Upper
 264 100
 260 23.6 18.9 28.3
 265 21.5 17.0 25.6

