

Data Path : Z:\SVOASRV\HPCHEM1\BNA M\DATA\BM092418\
 Data File : BM016879.D
 Acq On : 24 Sep 2018 16:44
 Operator : SJ/JU
 Sample : J5014-06MSD
 Misc :
 ALS Vial : 12 Sample Multiplier: 1

Instrument :
 BNA_M
 ClientSampleId :
 E8JB4MSD

Quant Time: Sep 25 04:26:46 2018
 Quant Method : Z:\SVOASRV\HPCHEM1\BNA_M\METHODS\SOM-EPA-BM091018MA.M
 Quant Title : SVOA CALIBRATION
 QLast Update : Tue Sep 25 04:03:47 2018
 Response via : Initial Calibration

Internal Standards	R.T.	QIon	Response	Conc	Units	Dev(Min)
1) 1,4-Dichlorobenzene-d4	7.72	152	246756	20.00	ng/ul	0.00
18) Naphthalene-d8	10.49	136	1051449	20.00	ng/ul	0.00
36) Acenaphthene-d10	14.35	164	605325	20.00	ng/ul	0.00
62) Phenanthrene-d10	17.10	188	1330601	20.00	ng/ul	0.00
78) Chrysene-d12	21.29	240	1476259	20.00	ng/ul	0.00
86) Perylene-d12	23.52	264	1568129	20.00	ng/ul	0.00

System Monitoring Compounds

3) 1,4-Dioxane-d8	3.26	96	29470	5.11	ng/uL	0.00
5) Phenol-d5	6.89	99	127297	6.12	ng/ul	0.00
7) Bis-(2-Chloroethyl)ether-d	7.06	67	314902	24.43	ng/ul	0.00
9) 2-Chlorophenol-d4	7.25	132	360477	21.22	ng/ul	0.00
13) 4-Methylphenol-d8	8.42	113	223708	13.89	ng/ul	0.00
19) Nitrobenzene-d5	8.86	128	212913	30.82	ng/ul	0.00
22) 2-Nitrophenol-d4	9.58	143	215823	34.36	ng/ul	0.00
26) 2,4-Dichlorophenol-d3	10.12	165	408382	25.59	ng/ul	0.00
29) 4-Chloroaniline-d4	0.00	131	0d	0.00	ng/ul	
44) Dimethylphthalate-d6	13.77	166	1327687	27.32	ng/ul	0.00
47) Acenaphthylene-d8	14.04	160	1579911	25.17	ng/ul	0.00
52) 4-Nitrophenol-d4	14.56	143	53164	6.66	ng/ul	0.00
58) Fluorene-d10	15.35	176	1181291	27.85	ng/ul	0.00
63) 4,6-Dinitro-2-methylphenol	15.46	200	178304	32.64	ng/ul	0.00
71) Anthracene-d10	17.20	188	1813118	28.24	ng/ul	0.00
79) Pyrene-d10	19.50	212	2073097	28.94	ng/ul	0.00
90) Benzo(a)pyrene-d12	23.38	264	2308136	28.22	ng/ul	0.00

Target Compounds

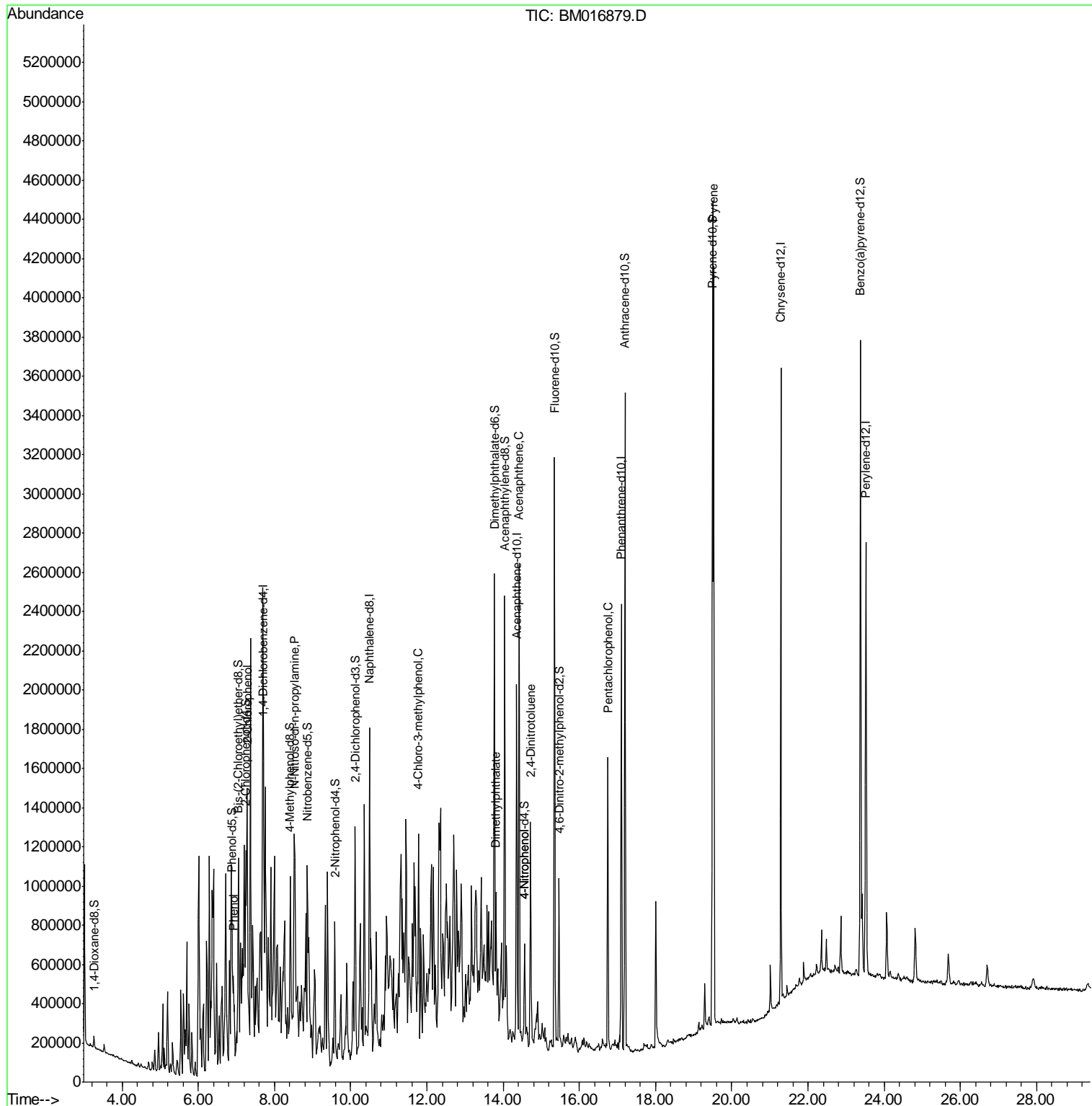
Target Compounds	R.T.	QIon	Response	Conc	Units	Ovalue
6) Phenol	6.92	94	186344	8.969	ng/ul	97
10) 2-Chlorophenol	7.28	128	318086	18.644	ng/ul	97
15) N-Nitroso-di-n-propylamine	8.52	70	292553	23.422	ng/ul	98
33) 4-Chloro-3-methylphenol	11.78	107	359488	22.366	ng/ul	94
45) Dimethylphthalate	13.82	163	344892	7.261	ng/ul	99
50) Acenaphthene	14.42	153	1004853	23.820	ng/ul	99
53) 4-Nitrophenol	14.57	109	37339	6.075	ng/ul	90
55) 2,4-Dinitrotoluene	14.72	165	320957	29.917	ng/ul	98
69) Pentachlorophenol	16.75	266	267471	30.529	ng/ul	98
80) Pyrene	19.53	202	2361437	26.051	ng/ul#	88

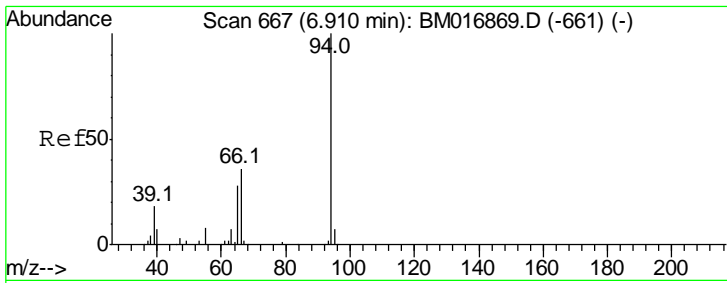
(#) = qualifier out of range (m) = manual integration (+) = signals summed

Data Path : Z:\SVOASRV\HPCHEM1\BNA M\DATA\BM092418\
 Data File : BM016879.D
 Acq On : 24 Sep 2018 16:44
 Operator : SJ/JU
 Sample : J5014-06MSD
 Misc :
 ALS Vial : 12 Sample Multiplier: 1

Instrument :
 BNA_M
 ClientSampleId :
 E8JB4MSD

Quant Time: Sep 25 04:26:46 2018
 Quant Method : Z:\SVOASRV\HPCHEM1\BNA_M\METHODS\SOM-EPA-BM091018MA.M
 Quant Title : SVOA CALIBRATION
 QLast Update : Tue Sep 25 04:03:47 2018
 Response via : Initial Calibration

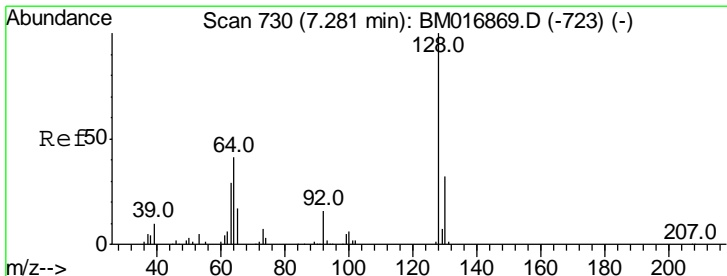
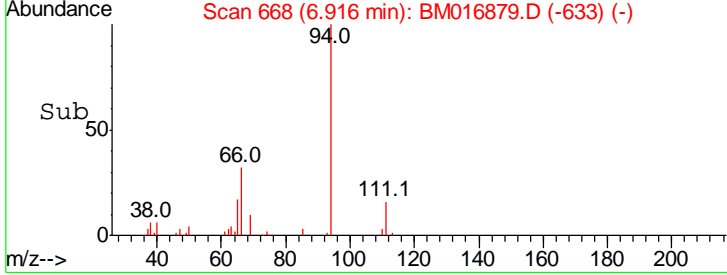
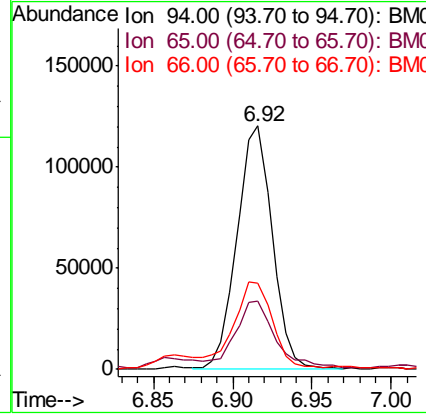
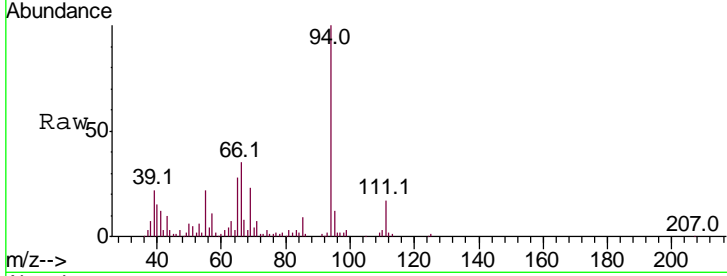




#6
 Phenol
 Concen: 8.969 ng/ul
 RT: 6.92 min Scan# 668
 Delta R.T. 0.01 min
 Lab File: BM016879.D
 Acq: 24 Sep 2018 16:44

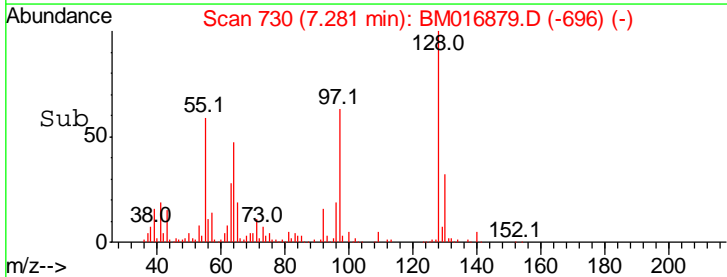
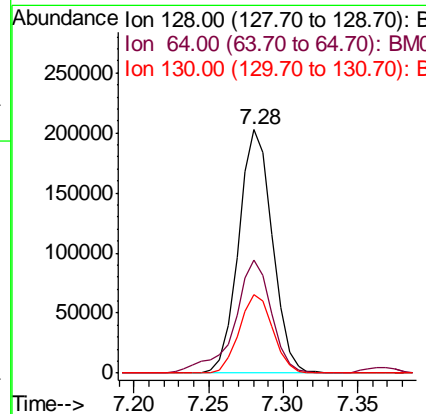
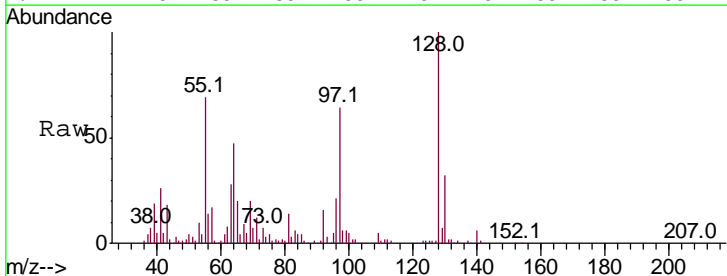
Instrument :
 BNA_M
ClientSampled :
 E8JB4MSD

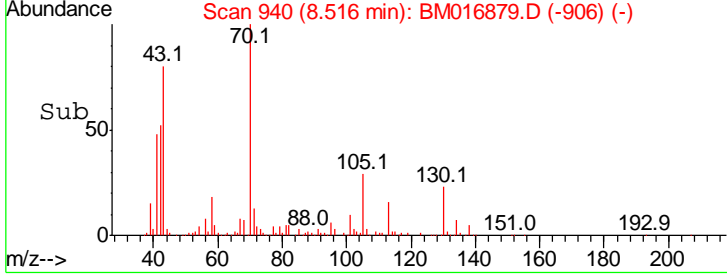
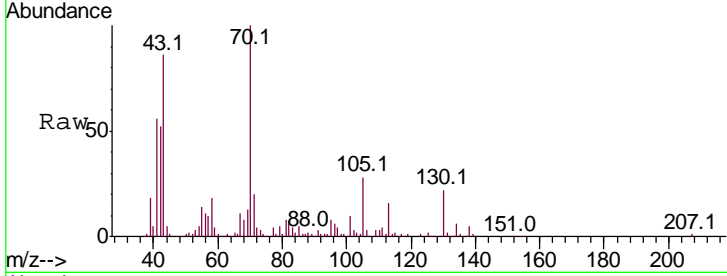
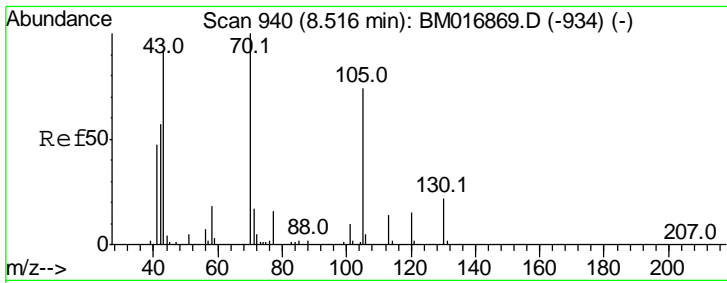
Tgt Ion	Resp	Lower	Upper
94	100		
65	28.2	23.0	34.6
66	35.3	30.4	45.6



#10
 2-Chlorophenol
 Concen: 18.644 ng/ul
 RT: 7.28 min Scan# 730
 Delta R.T. -0.00 min
 Lab File: BM016879.D
 Acq: 24 Sep 2018 16:44

Tgt Ion	Resp	Lower	Upper
128	100		
64	46.6	39.8	59.6
130	32.1	25.8	38.8

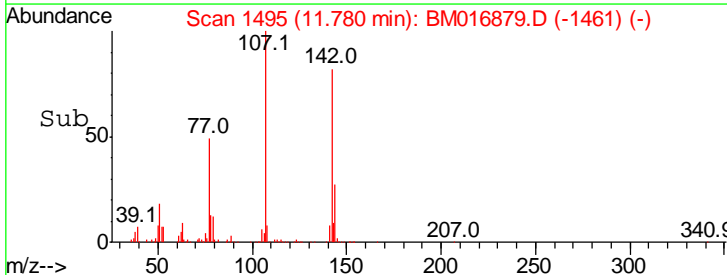
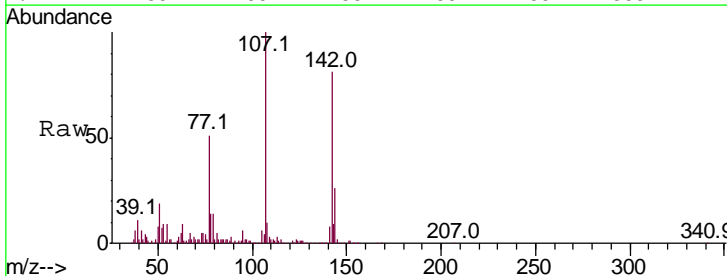
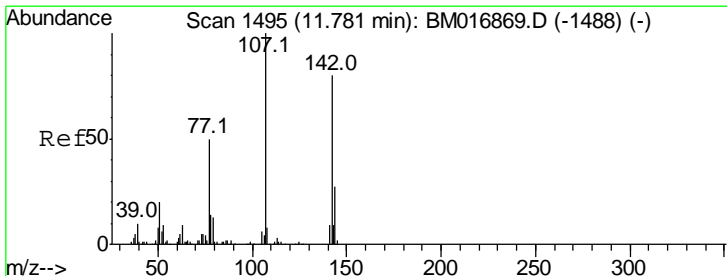
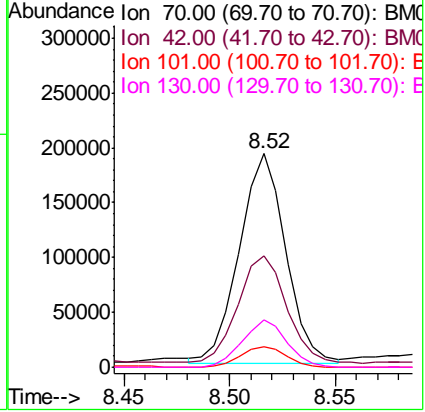




#15
 N-Nitroso-di-n-propylamine
 Concen: 23.422 ng/ul
 RT: 8.52 min Scan# 940
 Delta R.T. -0.00 min
 Lab File: BM016879.D
 Acq: 24 Sep 2018 16:44

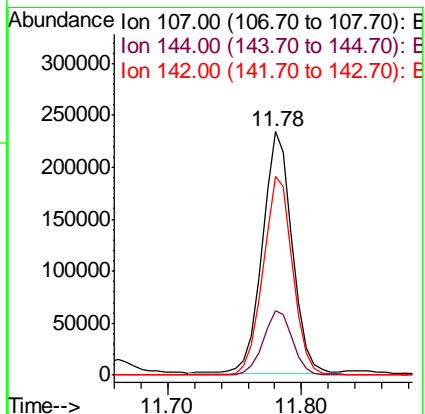
Instrument :
 BNA_M
ClientSampled :
 E8JB4MSD

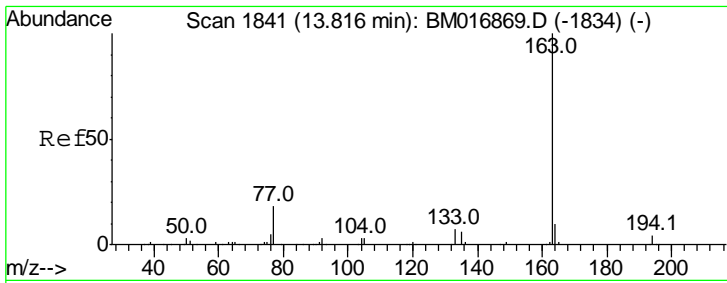
Tgt Ion	Resp	Lower	Upper
70	100		
42	52.4	40.2	60.4
101	9.9	7.7	11.5
130	22.2	17.8	26.6



#33
 4-Chloro-3-methylphenol
 Concen: 22.366 ng/ul
 RT: 11.78 min Scan# 1495
 Delta R.T. -0.00 min
 Lab File: BM016879.D
 Acq: 24 Sep 2018 16:44

Tgt Ion	Resp	Lower	Upper
107	100		
144	26.4	21.1	31.7
142	81.5	60.1	90.1

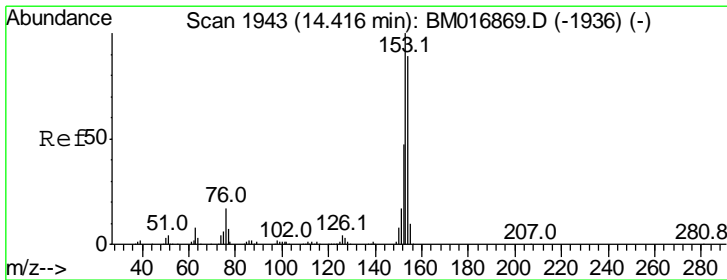
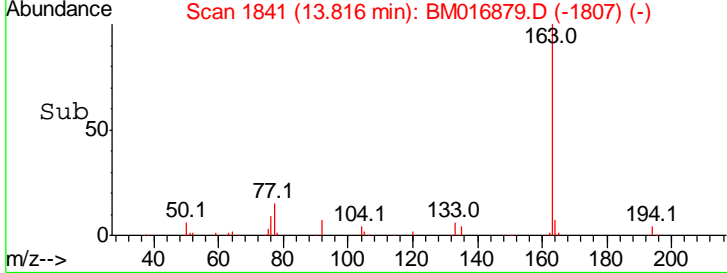
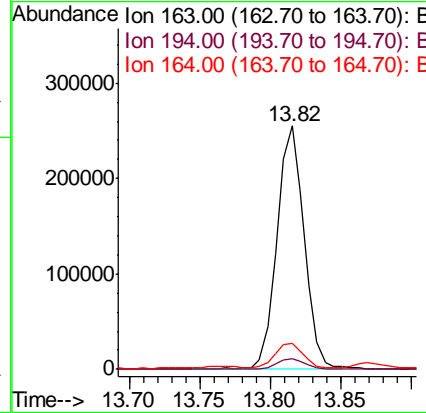
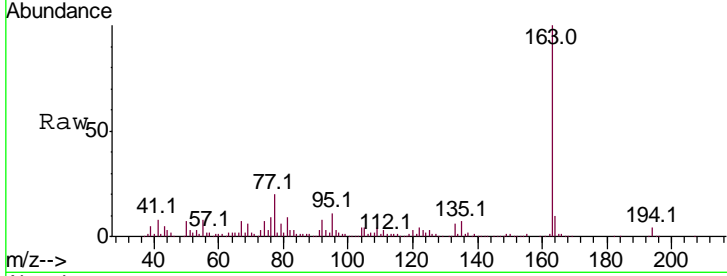




#45
 Dimethylphthalate
 Concen: 7.261 ng/ul
 RT: 13.82 min Scan# 1841
 Delta R.T. -0.00 min
 Lab File: BM016879.D
 Acq: 24 Sep 2018 16:44

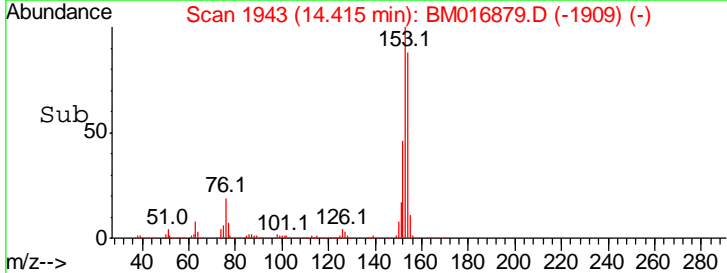
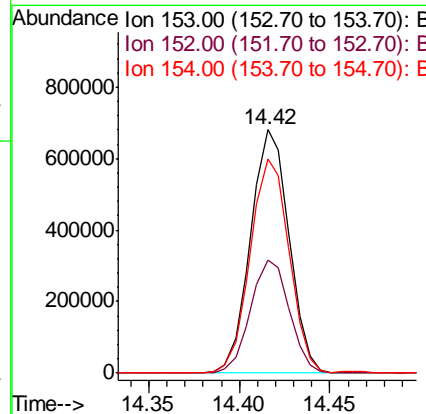
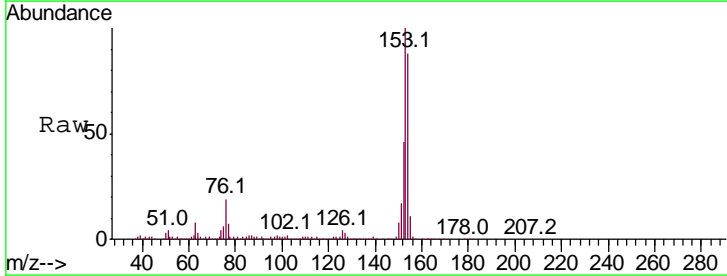
Instrument :
 BNA_M
 ClientSampled :
 E8JB4MSD

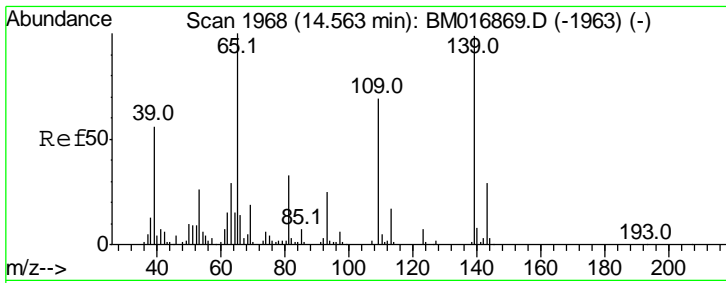
Tgt Ion	Resp	Lower	Upper
163	100		
194	4.3	4.0	6.0
164	10.4	8.4	12.6



#50
 Acenaphthene
 Concen: 23.820 ng/ul
 RT: 14.42 min Scan# 1943
 Delta R.T. -0.00 min
 Lab File: BM016879.D
 Acq: 24 Sep 2018 16:44

Tgt Ion	Resp	Lower	Upper
153	100		
152	46.3	37.9	56.9
154	88.0	69.8	104.6

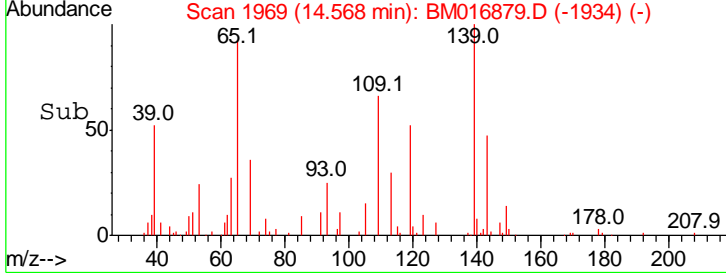
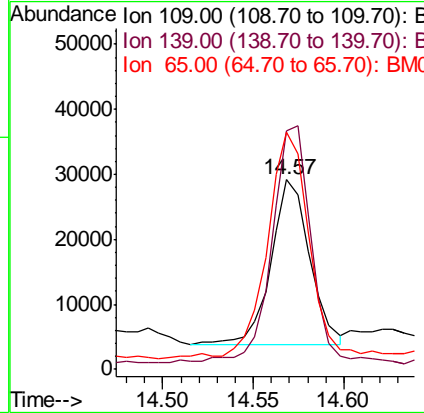
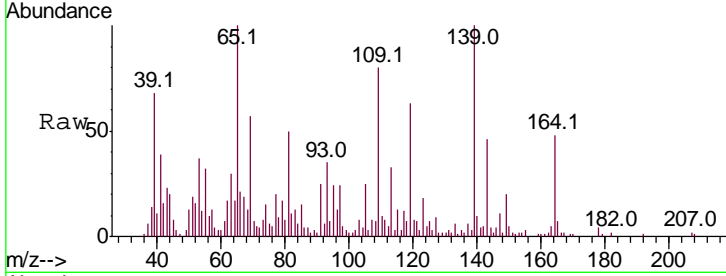




#53
 4-Nitrophenol
 Concen: 6.075 ng/ul
 RT: 14.57 min Scan# 1969
 Delta R.T. 0.01 min
 Lab File: BM016879.D
 Acq: 24 Sep 2018 16:44

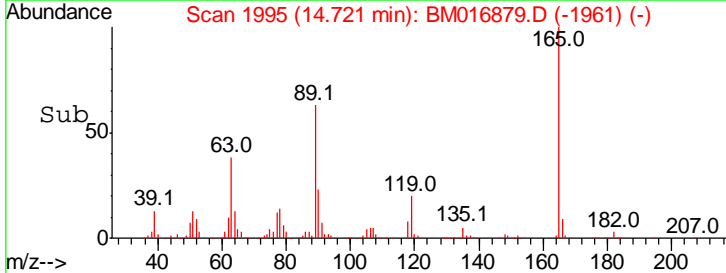
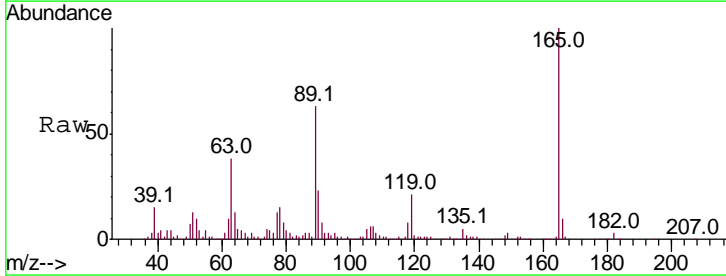
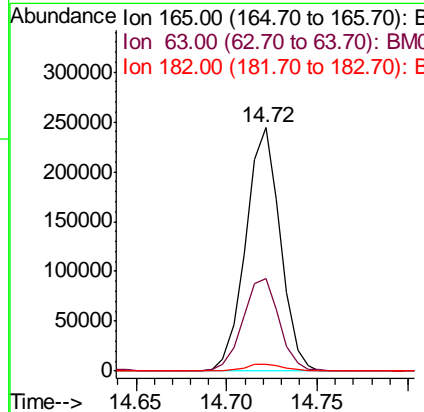
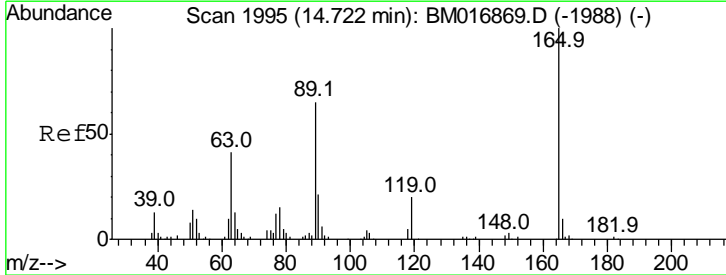
Instrument :
 BNA_M
 ClientSampled :
 E8JB4MSD

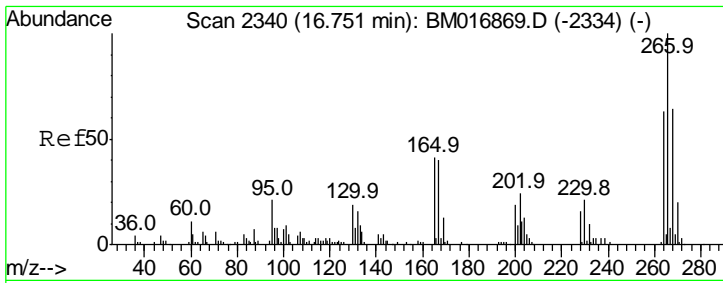
Tgt Ion	Resp	Lower	Upper
109	37339		
109	100		
139	125.7	91.2	136.8
65	125.3	92.6	139.0



#55
 2,4-Dinitrotoluene
 Concen: 29.917 ng/ul
 RT: 14.72 min Scan# 1995
 Delta R.T. -0.00 min
 Lab File: BM016879.D
 Acq: 24 Sep 2018 16:44

Tgt Ion	Resp	Lower	Upper
165	320957		
165	100		
63	38.1	31.4	47.0
182	3.0	2.7	4.1

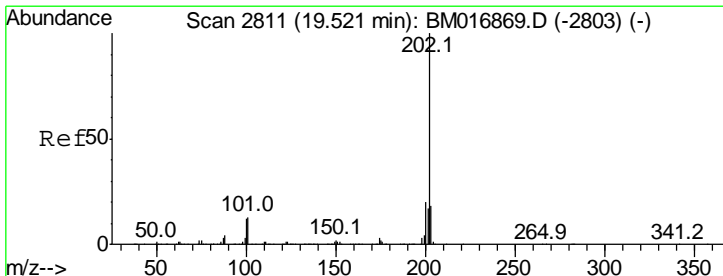
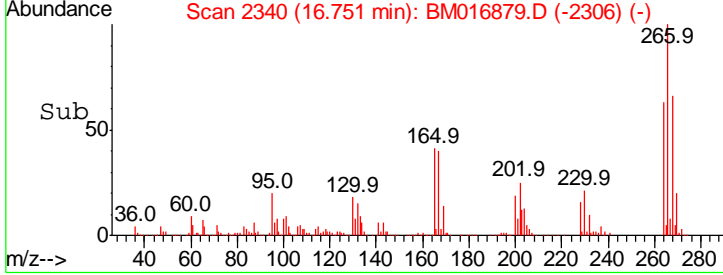
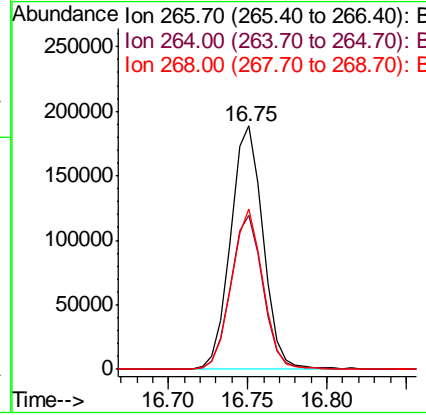
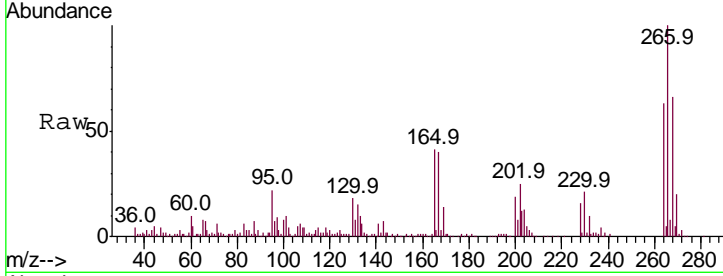




#69
 Pentachlorophenol
 Concen: 30.529 ng/ul
 RT: 16.75 min Scan# 2340
 Delta R.T. -0.00 min
 Lab File: BM016879.D
 Acq: 24 Sep 2018 16:44

Instrument :
 BNA_M
 ClientSampled :
 E8JB4MSD

Tgt Ion	Resp	Lower	Upper
266	100		
264	63.4	48.2	72.4
268	65.7	52.3	78.5



#80
 Pyrene
 Concen: 26.051 ng/ul
 RT: 19.53 min Scan# 2812
 Delta R.T. 0.01 min
 Lab File: BM016879.D
 Acq: 24 Sep 2018 16:44

Tgt Ion	Resp	Lower	Upper
202	100		
101	13.1	6.9	10.3#
100	10.8	5.6	8.4#

