

Data Path : Z:\SVOASRV\HPCHEM1\BNA M\DATA\BM092719\
 Data File : BM022803.D
 Acq On : 28 Sep 2019 01:16
 Operator : JU
 Sample : K5006-03
 Misc :
 ALS Vial : 21 Sample Multiplier: 1

Instrument :
 BNA_M
 ClientSampleId :
 ETJT9

Integration Parameters: LSCINT.P

Integrator: RTE
 Smoothing : OFF
 Sampling : 1
 Start Thrs: 0.2
 Stop Thrs : 0

Filtering: 5
 Min Area: 0.1 % of largest Peak
 Max Peaks: 100
 Peak Location: TOP

If leading or trailing edge < 100 prefer < Baseline drop else tangent >
 Peak separation: 5

Method : Z:\SVOASRV\HPCHEM1\BNA_M\METHODS\SOM-EPA-BM092719MA.M
 Title : SVOA CALIBRATION

Signal : TIC

peak #	R.T. min	first scan	max scan	last scan	PK TY	peak height	corr. area	corr. % max.	% of total
1	3.275	45	49	59	rVB	62707	97689	1.36%	0.157%
2	3.922	154	159	169	rVB	31113	53035	0.74%	0.085%
3	4.010	170	174	179	rVB	11339	17351	0.24%	0.028%
4	4.104	187	190	196	rBV4	9087	13620	0.19%	0.022%
5	4.463	249	251	256	rVB3	7123	8688	0.12%	0.014%
6	6.198	541	546	550	rVB2	7721	11643	0.16%	0.019%
7	6.975	669	678	688	rBV	280071	473680	6.59%	0.761%
8	7.140	699	706	719	rBV	750961	1223753	17.03%	1.966%
9	7.345	734	741	752	rBV	892045	1430004	19.90%	2.297%
10	7.810	813	820	829	rBV	954291	1482930	20.64%	2.382%
11	7.887	829	833	837	rVB2	6170	8257	0.11%	0.013%
12	8.510	933	939	951	rBV	737104	1167707	16.25%	1.876%
13	8.963	1009	1016	1028	rBV	939149	1568728	21.83%	2.520%
14	9.410	1087	1092	1098	rVB	13321	19635	0.27%	0.032%
15	9.686	1131	1139	1151	rBV	783051	1293274	18.00%	2.077%
16	10.222	1222	1230	1244	rBV	1264273	2072780	28.85%	3.329%
17	10.551	1279	1286	1288	rBV2	5732	9217	0.13%	0.015%
18	10.604	1288	1295	1309	rVB	1311316	2189426	30.47%	3.517%
19	10.733	1312	1317	1326	rBV	89542	153398	2.13%	0.246%
20	12.192	1559	1565	1572	rBV	19617	30026	0.42%	0.048%
21	13.857	1841	1848	1852	rBV	2378657	3216983	44.77%	5.167%
22	13.898	1852	1855	1865	rVB	142423	193014	2.69%	0.310%
23	14.139	1889	1896	1908	rBV	2826403	4040319	56.23%	6.489%
24	14.445	1941	1948	1958	rVB	2205159	3062668	42.62%	4.919%
25	14.627	1973	1979	1995	rBV	262630	404628	5.63%	0.650%
26	14.857	2014	2018	2024	rBV5	5359	7356	0.10%	0.012%
27	15.192	2070	2075	2080	rVB	49398	65348	0.91%	0.105%
28	15.257	2080	2086	2090	rBV4	5491	8398	0.12%	0.013%
29	15.439	2110	2117	2127	rVB	3551234	5052099	70.31%	8.115%
30	15.551	2130	2136	2145	rBV	1094882	1466804	20.41%	2.356%
31	15.668	2150	2156	2165	rVB2	57944	115419	1.61%	0.185%
32	16.015	2209	2215	2221	rBV	53751	75258	1.05%	0.121%
33	16.127	2228	2234	2237	rBV2	7065	10346	0.14%	0.017%
34	16.215	2245	2249	2255	rVB3	13986	20471	0.28%	0.033%

Data Path : Z:\SVOASRV\HPCHEM1\BNA M\DATA\BM092719\
 Data File : BM022803.D
 Acq On : 28 Sep 2019 01:16
 Operator : JU
 Sample : K5006-03
 Misc :
 ALS Vial : 21 Sample Multiplier: 1

Instrument :
 BNA_M
 ClientSampleId :
 ETJT9

Integration Parameters: LSCINT.P

Integrator: RTE
 Smoothing : OFF
 Sampling : 1
 Start Thrs: 0.2
 Stop Thrs : 0

Filtering: 5
 Min Area: 0.1 % of largest Peak
 Max Peaks: 100
 Peak Location: TOP

If leading or trailing edge < 100 prefer < Baseline drop else tangent >
 Peak separation: 5

Method : Z:\SVOASRV\HPCHEM1\BNA_M\METHODS\SOM-EPA-BM092719MA.M
 Title : SVOA CALIBRATION

35	16.968	2372	2377	2383	rBV4	7761	13729	0.19%	0.022%
36	17.186	2407	2414	2421	rBV2	2538092	3601583	50.12%	5.785%
37	17.280	2424	2430	2444	rBV	4107251	5720442	79.61%	9.188%
38	17.562	2472	2478	2481	rVB4	3630	7453	0.10%	0.012%
39	17.768	2509	2513	2516	rBV3	7488	10459	0.15%	0.017%
40	18.080	2561	2566	2574	rBV	116062	168137	2.34%	0.270%
41	18.715	2670	2674	2677	rVB3	9976	12280	0.17%	0.020%
42	18.968	2714	2717	2722	rVB4	14563	20921	0.29%	0.034%
43	19.209	2753	2758	2767	rBV	50444	77685	1.08%	0.125%
44	19.356	2780	2783	2791	rBV5	29898	45016	0.63%	0.072%
45	19.462	2797	2801	2805	rVB	38606	48295	0.67%	0.078%
46	19.509	2806	2809	2813	rBV2	21821	24194	0.34%	0.039%
47	19.574	2814	2820	2833	rVV	5452746	7185917	100.00%	11.542%
48	21.074	3071	3075	3083	rBV	460080	621945	8.66%	0.999%
49	21.362	3118	3124	3129	rBV	3152164	4033538	56.13%	6.479%
50	22.944	3390	3393	3397	rVB	161917	220153	3.06%	0.354%
51	23.486	3478	3485	3499	rVB	3036719	6040099	84.05%	9.701%
52	23.627	3503	3509	3521	rVB	1760543	3343972	46.54%	5.371%

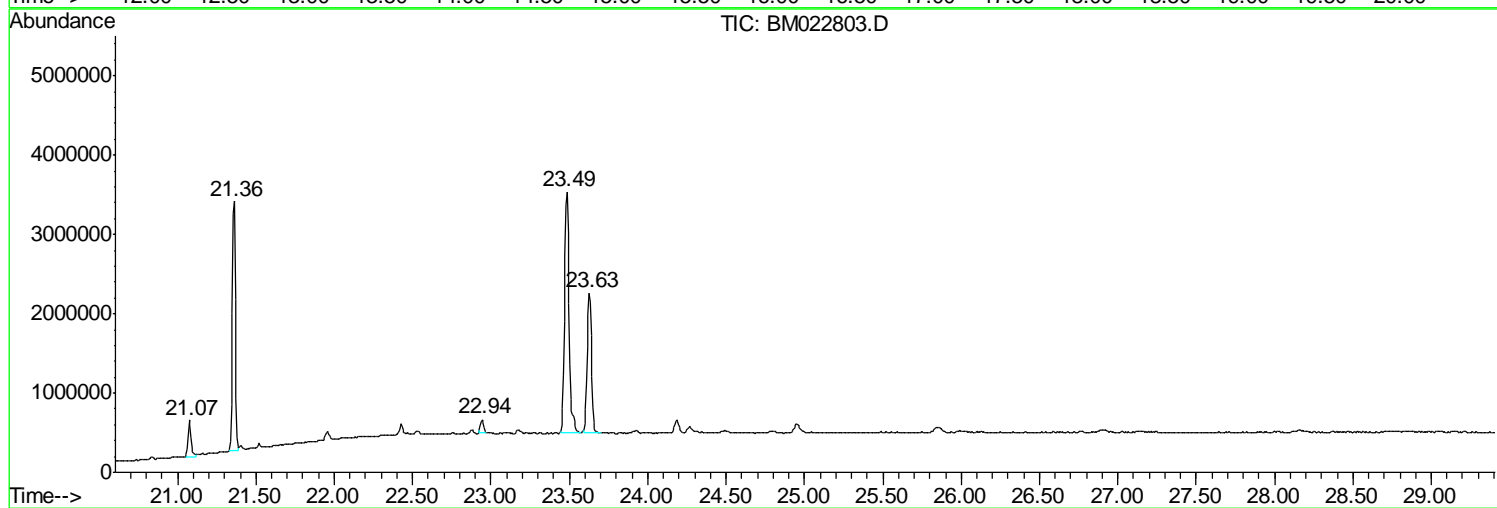
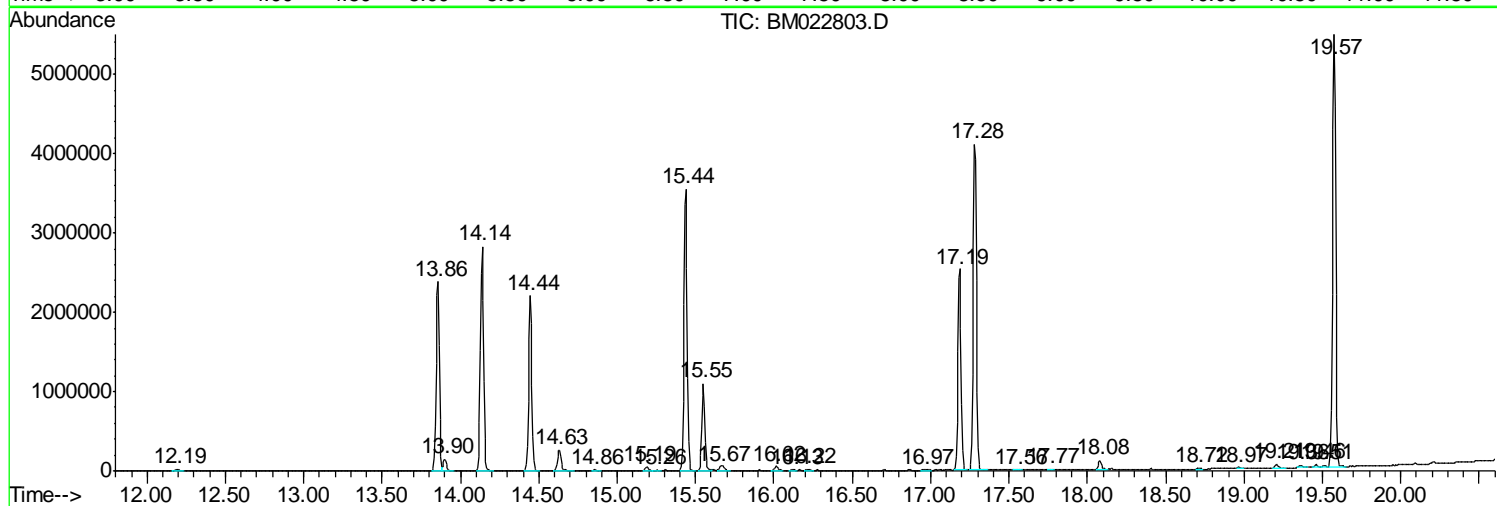
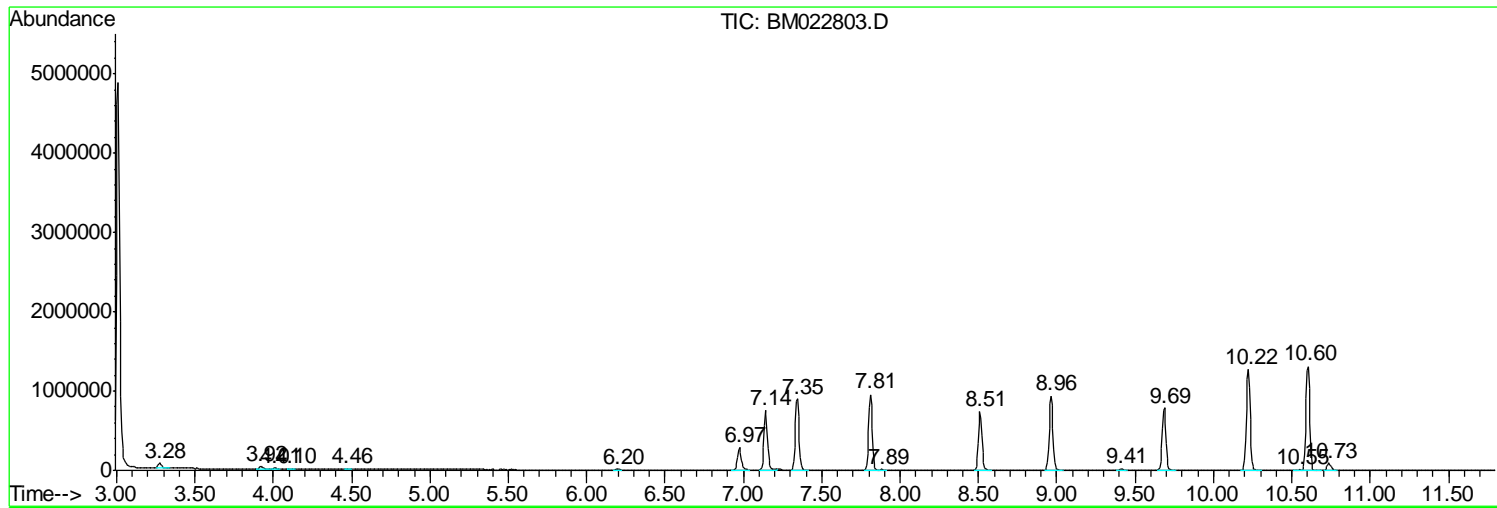
Sum of corrected areas: 62259770

Data Path : Z:\SVOASRV\HPCHEM1\BNA M\DATA\BM092719\
 Data File : BM022803.D
 Acq On : 28 Sep 2019 01:16
 Operator : JU
 Sample : K5006-03
 Misc :
 ALS Vial : 21 Sample Multiplier: 1

Instrument :
 BNA_M
 ClientSampled :
 ETJT9

Quant Method : Z:\SVOASRV\HPCHEM1\BNA_M\METHODS\SOM-EPA-BM092719MA.M
 Quant Title : SVOA CALIBRATION

TIC Library : C:\DATABASE\NIST02.L
 TIC Integration Parameters: LSCINT.P



Data Path : Z:\SVOASRV\HPCHEM1\BNA M\DATA\BM092719\
 Data File : BM022803.D
 Acq On : 28 Sep 2019 01:16
 Operator : JU
 Sample : K5006-03
 Misc :
 ALS Vial : 21 Sample Multiplier: 1

Instrument :
 BNA_M
 ClientSampled :
 ETJT9

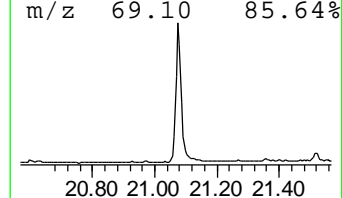
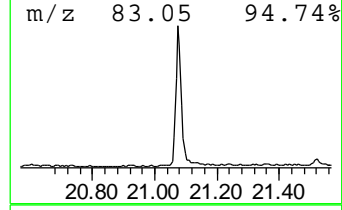
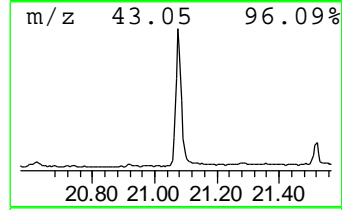
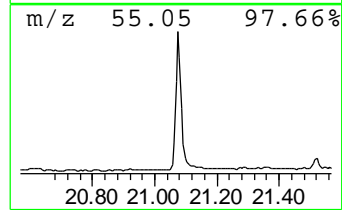
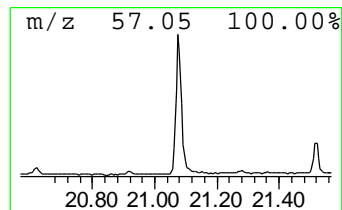
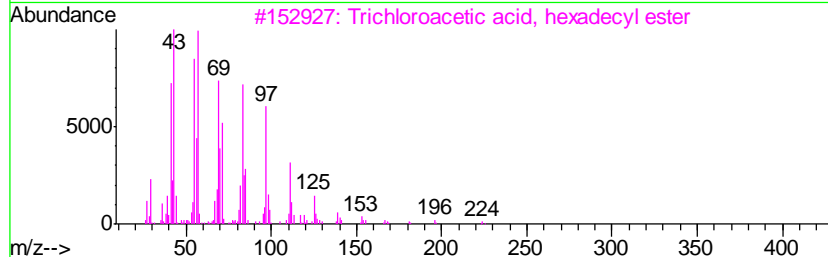
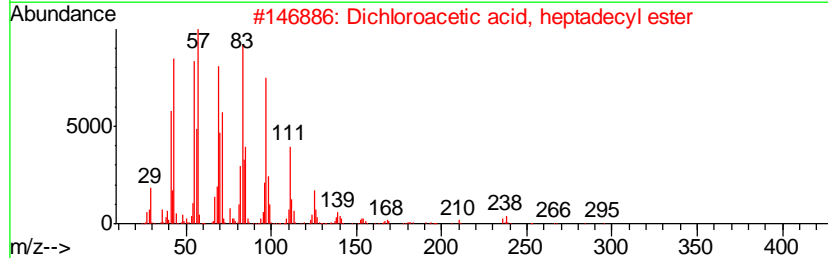
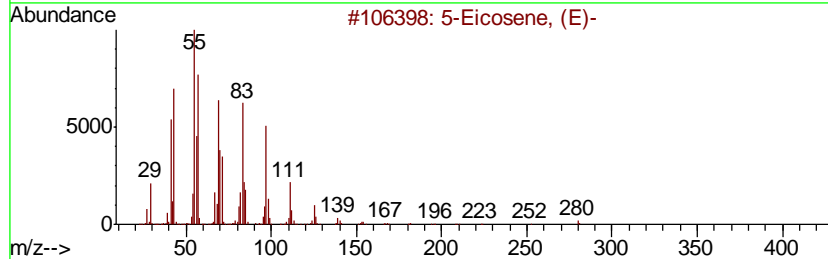
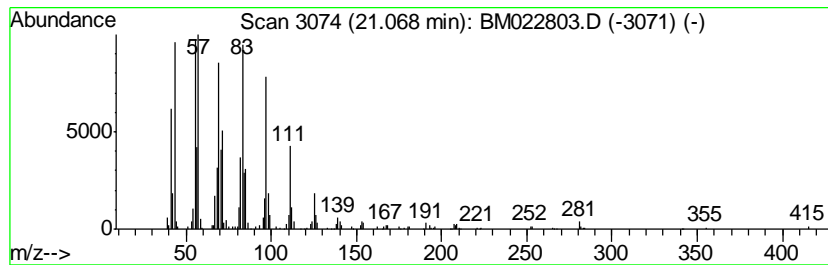
Quant Method : Z:\SVOASRV\HPCHEM1\BNA_M\METHODS\SOM-EPA-BM092719MA.M
 Quant Title : SVOA CALIBRATION

TIC Library : C:\DATABASE\NIST02.L
 TIC Integration Parameters: LSCINT.P

 Peak Number 1 (DEL) Alkane: Cyclic21.07 Concentration Rank 1

R.T.	EstConc	Area	Relative to ISTD	R.T.
21.07	3.08 ng/ul	621945	Chrysene-d12	21.36

Hit#	of	Tentative ID	MW	MolForm	CAS#	Qual
1	5	5-Eicosene, (E)-	280	C20H40	074685-30-6	99
2		Dichloroacetic acid, heptadecyl ...	366	C19H36Cl2O2	1000282-98-2	94
3		Trichloroacetic acid, hexadecyl ...	386	C18H33Cl3O2	074339-54-1	93
4		Trifluoroacetic acid, n-octadecy...	366	C20H37F3O2	079392-43-1	91
5		3-Eicosene, (E)-	280	C20H40	074685-33-9	91



Data Path : Z:\SVOASRV\HPCHEM1\BNA_M\DATA\BM092719\
Data File : BM022803.D
Acq On : 28 Sep 2019 01:16
Operator : JU
Sample : K5006-03
Misc :
ALS Vial : 21 Sample Multiplier: 1

Instrument :
BNA_M
ClientSampleId :
ETJT9

Quant Method : Z:\SVOASRV\HPCHEM1\BNA_M\METHODS\SOM-EPA-BM092719MA.M
Quant Title : SVOA CALIBRATION

TIC Library : C:\DATABASE\NIST02.L
TIC Integration Parameters: LSCINT.P

TIC Top Hit name	RT	EstConc	Units	Response	--Internal Standard--			
					#	RT	Resp	Conc
(DEL) Alkane: Cyc...	21.07	3.1	ng/ul	621945	5	21.36	4033540	20.0