

Data Path : Z:\svoasrv\HPCHEM1\BNA_M\Data\BM092824\
 Data File : BM047704.D
 Acq On : 28 Sep 2024 23:16
 Operator : RC/JU
 Sample : P3927-12DL 5X
 Misc :
 ALS Vial : 19 Sample Multiplier: 1

Instrument :
 BNA_M
 ClientSampleId :
 DDCC9DL

Integration Parameters: LSCINT.P

Integrator: RTE
 Smoothing : OFF Filtering: 5
 Sampling : 1 Min Area: 0.1 % of largest Peak
 Start Thrs: 0.2 Max Peaks: 100
 Stop Thrs : 0 Peak Location: TOP

If leading or trailing edge < 100 prefer < Baseline drop else tangent >
 Peak separation: 5

Method : Z:\svoasrv\HPCHEM1\BNA_M\Methods\SFAM-EPA-BM092724.MA.M
 Title : SVOA CALIBRATION

Signal : TIC: BM047704.D\data.ms

peak #	R.T. min	first scan	max scan	last scan	PK TY	peak height	corr. area	corr. % max.	% of total
1	3.681	114	118	127	rBV	74241	119267	0.85%	0.220%
2	5.840	478	485	494	rVB2	84466	132597	0.94%	0.244%
3	6.381	573	577	582	rBV	40203	59216	0.42%	0.109%
4	6.787	641	646	648	rBV2	33016	57616	0.41%	0.106%
5	6.816	648	651	656	rVB2	69470	103316	0.73%	0.190%
6	6.875	656	661	664	rBV	88598	130351	0.93%	0.240%
7	6.910	664	667	672	rVB	61483	83875	0.60%	0.155%
8	6.981	672	679	685	rBV3	223494	401007	2.85%	0.739%
9	7.046	685	690	697	rVB	37911	63016	0.45%	0.116%
10	7.146	701	707	713	rBV	108805	183227	1.30%	0.338%
11	7.246	720	724	728	rVB	81950	103351	0.73%	0.191%
12	7.346	733	741	747	rBV	123679	195146	1.39%	0.360%
13	7.451	753	759	768	rVB2	433311	734158	5.22%	1.353%
14	7.657	786	794	799	rBV4	26252	68760	0.49%	0.127%
15	7.816	813	821	827	rBV	726904	1222420	8.69%	2.254%
16	7.887	827	833	838	rVV5	47172	95796	0.68%	0.177%
17	8.016	850	855	858	rVB2	43797	58164	0.41%	0.107%
18	8.116	869	872	879	rVB7	46338	76106	0.54%	0.140%
19	8.293	898	902	908	rVV2	51163	95403	0.68%	0.176%
20	8.357	908	913	919	rVV2	103002	176888	1.26%	0.326%
21	8.416	919	923	926	rVV	75037	93205	0.66%	0.172%
22	8.457	926	930	931	rVV	74233	84630	0.60%	0.156%
23	8.487	932	935	937	rVV	122166	175132	1.24%	0.323%
24	8.516	937	940	948	rVB	162447	242256	1.72%	0.447%
25	8.592	948	953	956	rBV	110312	183120	1.30%	0.338%
26	8.622	956	958	964	rVB	56835	70380	0.50%	0.130%
27	8.769	979	983	985	rBV	40432	57124	0.41%	0.105%
28	8.810	985	990	1000	rVB	716020	1090115	7.75%	2.010%
29	8.934	1000	1011	1022	rBV3	500639	1011505	7.19%	1.865%
30	9.051	1022	1031	1036	rVV	438359	650894	4.63%	1.200%
31	9.169	1043	1051	1057	rVB6	64738	159849	1.14%	0.295%
32	9.251	1057	1065	1069	rBV4	28337	60151	0.43%	0.111%
33	9.304	1069	1074	1082	rVB6	27418	77100	0.55%	0.142%
34	9.534	1109	1113	1119	rVB	52053	88908	0.63%	0.164%
35	9.604	1119	1125	1133	rVB	100522	179986	1.28%	0.332%
36	9.692	1133	1140	1146	rBV2	84123	172460	1.23%	0.318%

Data Path : Z:\svoasrv\HPCHEM1\BNA_M\Data\BM092824\
 Data File : BM047704.D
 Acq On : 28 Sep 2024 23:16
 Operator : RC/JU
 Sample : P3927-12DL 5X
 Misc :
 ALS Vial : 19 Sample Multiplier: 1

Instrument :
 BNA_M
 ClientSampleId :
 DDCC9DL

Integration Parameters: LSCINT.P

Integrator: RTE
 Smoothing : OFF Filtering: 5
 Sampling : 1 Min Area: 0.1 % of largest Peak
 Start Thrs: 0.2 Max Peaks: 100
 Stop Thrs : 0 Peak Location: TOP

If leading or trailing edge < 100 prefer < Baseline drop else tangent >
 Peak separation: 5

Method : Z:\svoasrv\HPCHEM1\BNA_M\Methods\SFAM-EPA-BM092724.MA.M
 Title : SVOA CALIBRATION

37	9.816	1155	1161	1167	rBV5	25422	62775	0.45%	0.116%
38	9.898	1172	1175	1182	rVB3	38745	67974	0.48%	0.125%
39	10.228	1223	1231	1239	rVB2	134891	260828	1.85%	0.481%
40	10.504	1268	1278	1284	rBV	47499	95396	0.68%	0.176%
41	10.610	1286	1296	1308	rBV	9028217	14068938	100.00%	25.936%
42	10.728	1308	1316	1324	rBV	2049457	3434582	24.41%	6.332%
43	10.904	1340	1346	1351	rBV	190561	298837	2.12%	0.551%
44	11.004	1357	1363	1370	rVB4	219373	409369	2.91%	0.755%
45	11.092	1370	1378	1381	rBV	152615	266749	1.90%	0.492%
46	11.122	1381	1383	1395	rVB4	114682	197307	1.40%	0.364%
47	11.228	1395	1401	1412	rVB	111608	202541	1.44%	0.373%
48	11.439	1431	1437	1442	rBV	133879	211301	1.50%	0.390%
49	11.504	1442	1448	1451	rVV	677727	1096414	7.79%	2.021%
50	11.533	1451	1453	1460	rVV	435362	540838	3.84%	0.997%
51	11.604	1460	1465	1468	rVV2	63056	94781	0.67%	0.175%
52	11.639	1468	1471	1476	rVB2	65830	92748	0.66%	0.171%
53	11.763	1483	1492	1500	rVB	73240	139384	0.99%	0.257%
54	11.851	1500	1507	1517	rBV	477751	789357	5.61%	1.455%
55	11.945	1517	1523	1526	rBV3	71261	142873	1.02%	0.263%
56	12.028	1531	1537	1543	rVV	654804	1044172	7.42%	1.925%
57	12.116	1548	1552	1556	rVV	68791	103861	0.74%	0.191%
58	12.280	1574	1580	1586	rVB3	61370	137109	0.97%	0.253%
59	12.457	1603	1610	1620	rVV4	139597	304812	2.17%	0.562%
60	13.027	1698	1707	1713	rVV	291335	443265	3.15%	0.817%
61	13.280	1745	1750	1757	rBV	80476	130605	0.93%	0.241%
62	13.498	1783	1787	1795	rVB4	41420	81237	0.58%	0.150%
63	13.627	1795	1809	1815	rBV10	80804	197841	1.41%	0.365%
64	13.769	1824	1833	1838	rBV5	50432	118498	0.84%	0.218%
65	13.851	1843	1847	1856	rVV	257850	411768	2.93%	0.759%
66	13.998	1866	1872	1878	rBV4	99875	174059	1.24%	0.321%
67	14.074	1880	1885	1888	rVV4	48121	90327	0.64%	0.167%
68	14.139	1892	1896	1900	rVV	261097	392002	2.79%	0.723%
69	14.357	1927	1933	1937	rBV2	136802	196341	1.40%	0.362%
70	14.398	1937	1940	1943	rVV	91442	125178	0.89%	0.231%
71	14.445	1943	1948	1956	rVV	1330712	2018929	14.35%	3.722%
72	14.533	1956	1963	1968	rVB5	60058	118775	0.84%	0.219%
73	14.633	1975	1980	1987	rBV3	62238	153632	1.09%	0.283%
74	14.698	1987	1991	1996	rVV	115763	166208	1.18%	0.306%
75	14.798	2003	2008	2013	rBV9	45982	75086	0.53%	0.138%
76	14.980	2036	2039	2044	rVB2	65512	90327	0.64%	0.167%

Data Path : Z:\svoasrv\HPCHEM1\BNA_M\Data\BM092824\
 Data File : BM047704.D
 Acq On : 28 Sep 2024 23:16
 Operator : RC/JU
 Sample : P3927-12DL 5X
 Misc :
 ALS Vial : 19 Sample Multiplier: 1

Instrument :
 BNA_M
 ClientSampleId :
 DDCC9DL

Integration Parameters: LSCINT.P
 Integrator: RTE
 Smoothing : OFF
 Sampling : 1
 Start Thrs: 0.2
 Stop Thrs : 0
 Filtering: 5
 Min Area: 0.1 % of largest Peak
 Max Peaks: 100
 Peak Location: TOP

If leading or trailing edge < 100 prefer < Baseline drop else tangent >
 Peak separation: 5

Method : Z:\svoasrv\HPCHEM1\BNA_M\Methods\SFAM-EPA-BM092724.MA.M
 Title : SVOA CALIBRATION

77	15.069	2050	2054	2059	rVB	190764	251077	1.78%	0.463%
78	15.192	2070	2075	2079	rBV6	31325	61744	0.44%	0.114%
79	15.304	2087	2094	2101	rVB	97923	156678	1.11%	0.289%
80	15.439	2109	2117	2123	rBV	340924	512084	3.64%	0.944%
81	15.563	2124	2138	2145	rBV2	275083	570461	4.05%	1.052%
82	15.710	2160	2163	2173	rVB	39471	63181	0.45%	0.116%
83	15.798	2174	2178	2186	rVB	166191	242844	1.73%	0.448%
84	16.163	2236	2240	2243	rBV	103851	141493	1.01%	0.261%
85	16.363	2269	2274	2281	rVB3	37389	64741	0.46%	0.119%
86	16.833	2347	2354	2364	rBV	2676457	3737175	26.56%	6.889%
87	16.957	2371	2375	2379	rVV	92362	115366	0.82%	0.213%
88	17.004	2380	2383	2393	rVB3	49067	84173	0.60%	0.155%
89	17.186	2407	2414	2419	rBV	1586134	2234881	15.89%	4.120%
90	17.280	2424	2430	2439	rVV2	360247	540151	3.84%	0.996%
91	17.692	2495	2500	2505	rBV	90942	112838	0.80%	0.208%
92	17.862	2524	2529	2533	rVV	127980	159100	1.13%	0.293%
93	18.074	2558	2565	2568	rBV3	68376	107023	0.76%	0.197%
94	18.380	2613	2617	2625	rBV	73179	96718	0.69%	0.178%
95	19.033	2721	2728	2732	rVB2	85574	164148	1.17%	0.303%
96	19.568	2814	2819	2826	rBV	447147	682410	4.85%	1.258%
97	21.409	3126	3132	3138	rBV	1583469	2346167	16.68%	4.325%
98	22.174	3257	3262	3271	rBV	639774	974573	6.93%	1.797%
99	24.209	3602	3608	3617	rVB2	215153	551804	3.92%	1.017%
100	24.415	3635	3643	3661	rVB	1002945	2670991	18.99%	4.924%

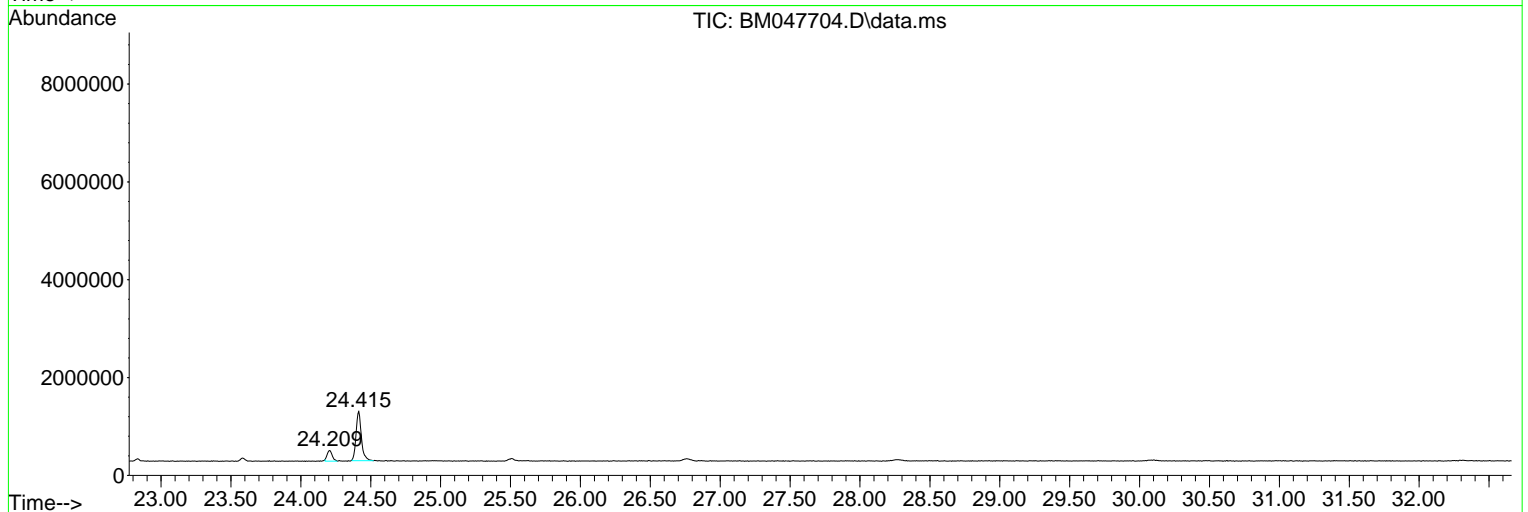
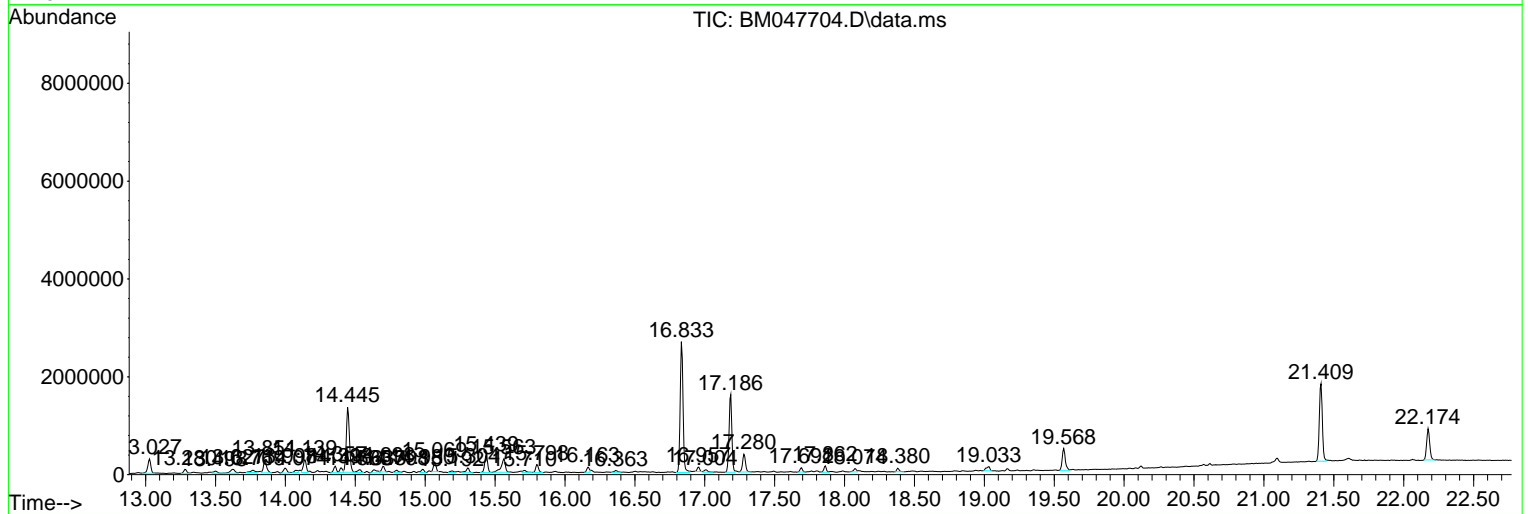
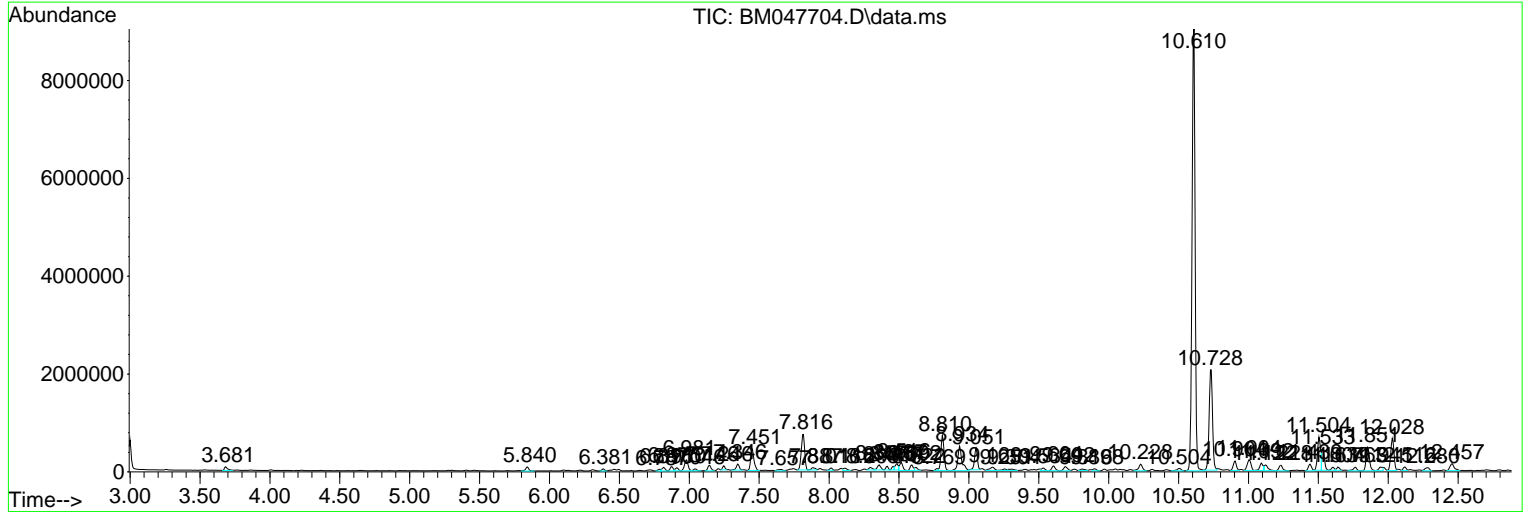
Sum of corrected areas: 54245340

Data Path : Z:\svoasrv\HPCHEM1\BNA_M\Data\BM092824\
 Data File : BM047704.D
 Acq On : 28 Sep 2024 23:16
 Operator : RC/JU
 Sample : P3927-12DL 5X
 Misc :
 ALS Vial : 19 Sample Multiplier: 1

Instrument :
 BNA_M
ClientSampleId :
 DCC9DL

Quant Method : Z:\svoasrv\HPCHEM1\BNA_M\Methods\SFAM-EPA-BM092724.MA.M
 Quant Title : SVOA CALIBRATION

TIC Library : C:\Database\NIST20.L
 TIC Integration Parameters: LSCINT.P



Data Path : Z:\svoasrv\HPCHEM1\BNA_M\Data\BM092824\
 Data File : BM047704.D
 Acq On : 28 Sep 2024 23:16
 Operator : RC/JU
 Sample : P3927-12DL 5X
 Misc :
 ALS Vial : 19 Sample Multiplier: 1

Instrument :
 BNA_M
 ClientSampleId :
 DCC9DL

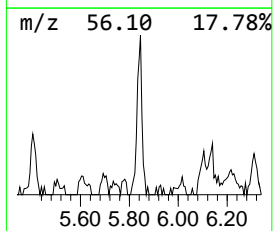
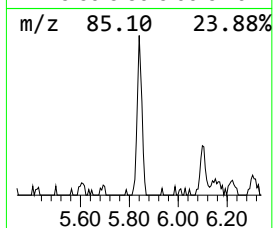
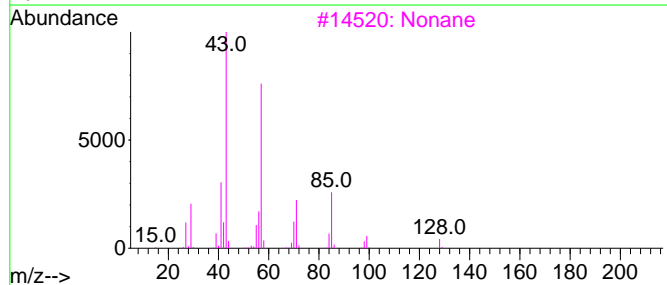
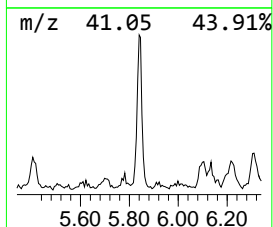
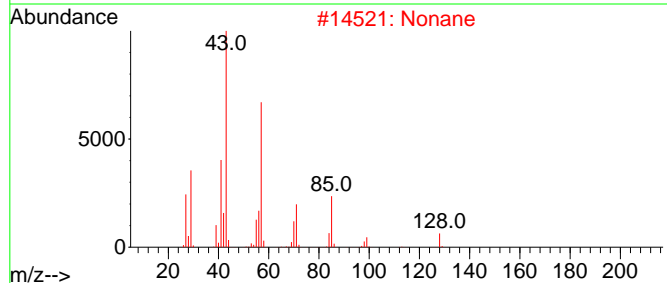
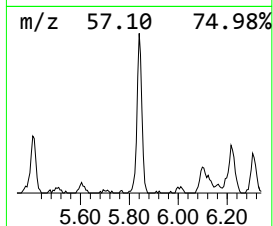
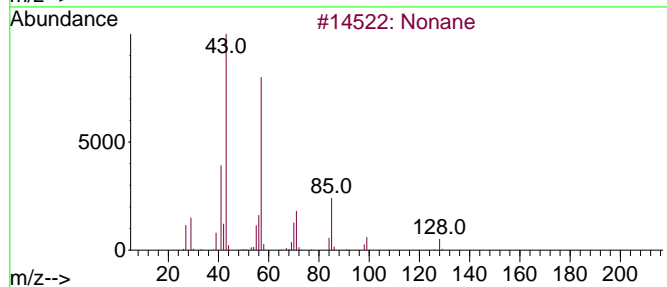
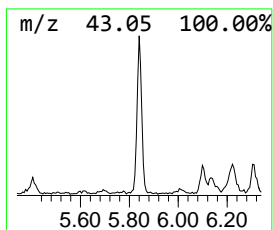
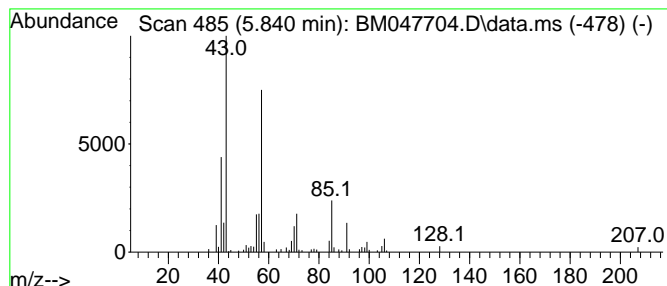
Quant Method : Z:\svoasrv\HPCHEM1\BNA_M\Methods\SFAM-EPA-BM092724.MA.M
 Quant Title : SVOA CALIBRATION

TIC Library : C:\Database\NIST20.L
 TIC Integration Parameters: LSCINT.P

 Peak Number 1 (DEL) Alkane: Straight-Chai... Concentration Rank 10

R.T.	EstConc	Area	Relative to ISTD	R.T.
5.840	2.17 ng/ul	132597	1,4-Dichlorobenzene-d4	7.816

Hit#	of	5	Tentative ID	MW	MolForm	CAS#	Qual
1			Nonane	128	C9H20	000111-84-2	81
2			Nonane	128	C9H20	000111-84-2	72
3			Nonane	128	C9H20	000111-84-2	70
4			Octane, 2,4,6-trimethyl-	156	C11H24	062016-37-9	59
5			Heptadecane, 2,6,10,14-tetramethyl-	296	C21H44	018344-37-1	53



Data Path : Z:\svoasrv\HPCHEM1\BNA_M\Data\BM092824\
 Data File : BM047704.D
 Acq On : 28 Sep 2024 23:16
 Operator : RC/JU
 Sample : P3927-12DL 5X
 Misc :
 ALS Vial : 19 Sample Multiplier: 1

Instrument :
 BNA_M
 ClientSampleId :
 DDCC9DL

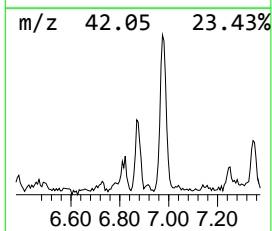
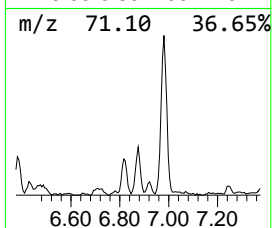
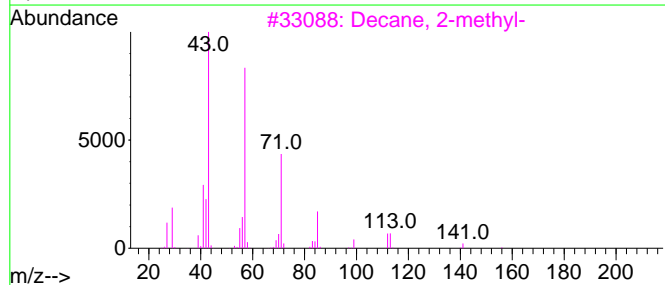
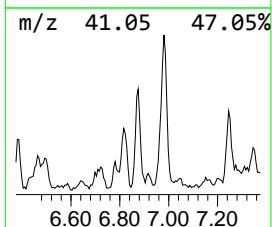
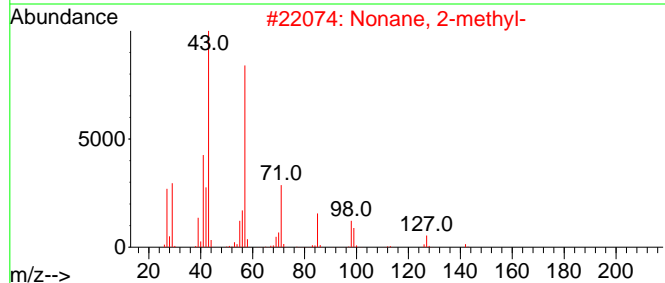
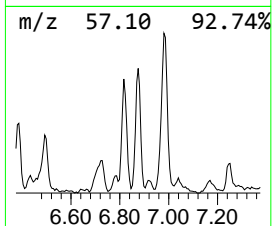
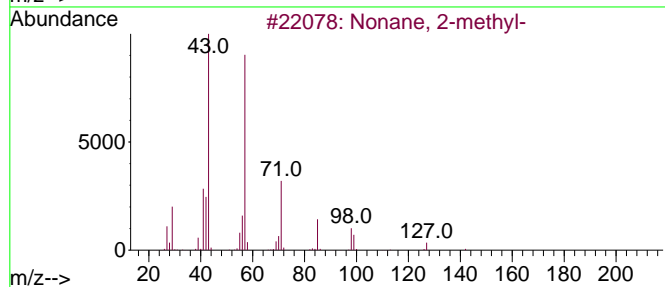
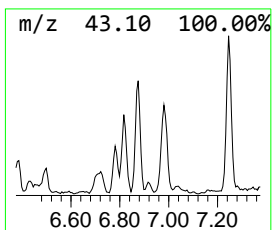
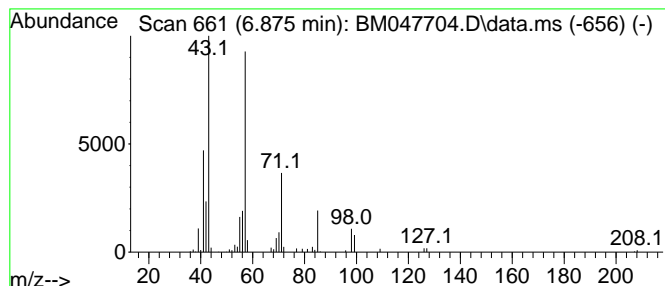
Quant Method : Z:\svoasrv\HPCHEM1\BNA_M\Methods\SFAM-EPA-BM092724.MA.M
 Quant Title : SVOA CALIBRATION

TIC Library : C:\Database\NIST20.L
 TIC Integration Parameters: LSCINT.P

 Peak Number 2 (DEL) Alkane: Straight-Chai... Concentration Rank 11

R.T.	EstConc	Area	Relative to ISTD	R.T.
6.875	2.13 ng/ul	130351	1,4-Dichlorobenzene-d4	7.816

Hit#	of 5	Tentative ID	MW	MolForm	CAS#	Qual
1		Nonane, 2-methyl-	142	C10H22	000871-83-0	83
2		Nonane, 2-methyl-	142	C10H22	000871-83-0	83
3		Decane, 2-methyl-	156	C11H24	006975-98-0	72
4		Octane, 2-methyl-	128	C9H20	003221-61-2	59
5		Nonane, 2,5-dimethyl-	156	C11H24	017302-27-1	53



Data Path : Z:\svoasrv\HPCHEM1\BNA_M\Data\BM092824\
 Data File : BM047704.D
 Acq On : 28 Sep 2024 23:16
 Operator : RC/JU
 Sample : P3927-12DL 5X
 Misc :
 ALS Vial : 19 Sample Multiplier: 1

Instrument :
 BNA_M
 ClientSampleId :
 DCC9DL

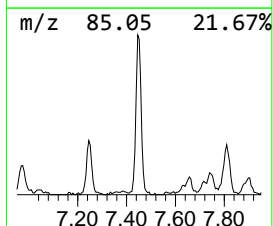
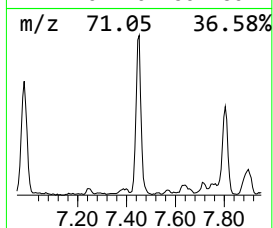
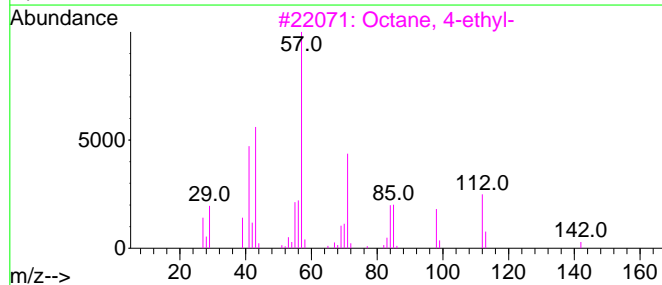
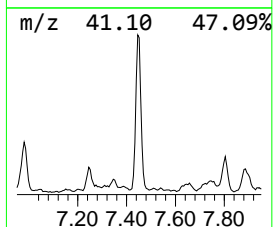
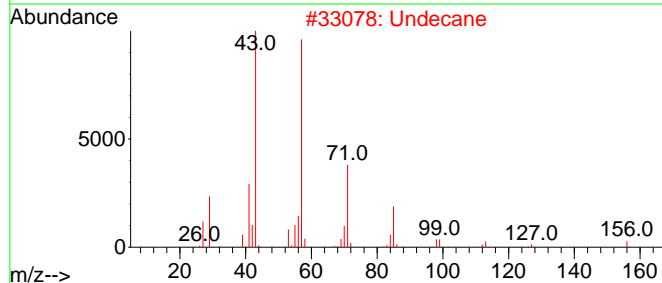
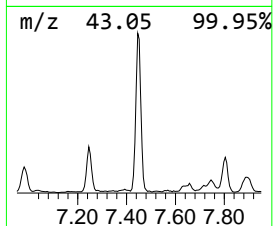
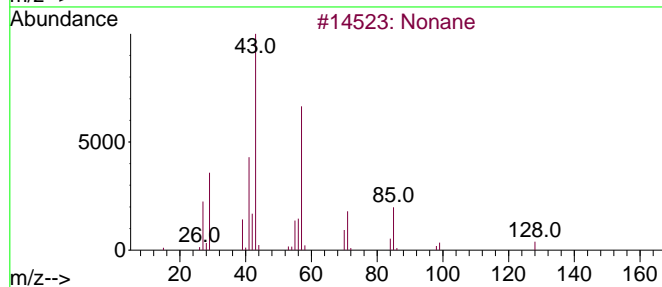
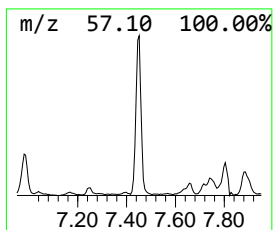
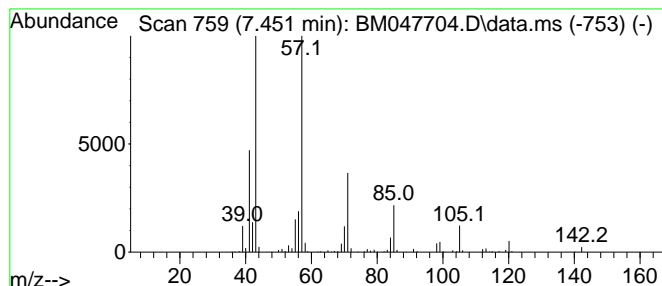
Quant Method : Z:\svoasrv\HPCHEM1\BNA_M\Methods\SFAM-EPA-BM092724.MA.M
 Quant Title : SVOA CALIBRATION

TIC Library : C:\Database\NIST20.L
 TIC Integration Parameters: LSCINT.P

 Peak Number 3 (DEL) Alkane: Straight-Chai... Concentration Rank 2

R.T.	EstConc	Area	Relative to ISTD	R.T.
7.451	12.01 ng/ul	734158	1,4-Dichlorobenzene-d4	7.816

Hit#	of 5	Tentative ID	MW	MolForm	CAS#	Qual
1		Nonane	128	C9H20	000111-84-2	80
2		Undecane	156	C11H24	001120-21-4	72
3		Octane, 4-ethyl-	142	C10H22	015869-86-0	64
4		Tridecane	184	C13H28	000629-50-5	59
5		Carbonic acid, prop-1-en-2-yl te...	298	C18H34O3	1000382-90-9	59



Data Path : Z:\svoasrv\HPCHEM1\BNA_M\Data\BM092824\
 Data File : BM047704.D
 Acq On : 28 Sep 2024 23:16
 Operator : RC/JU
 Sample : P3927-12DL 5X
 Misc :
 ALS Vial : 19 Sample Multiplier: 1

Instrument :
 BNA_M
 ClientSampleId :
 DCC9DL

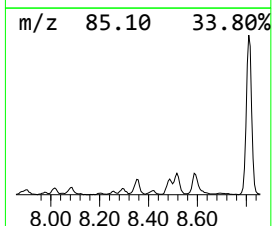
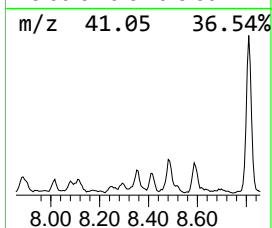
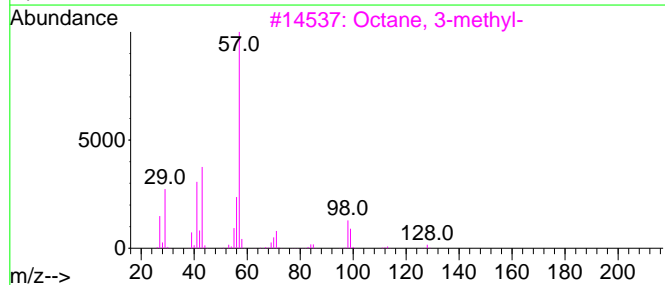
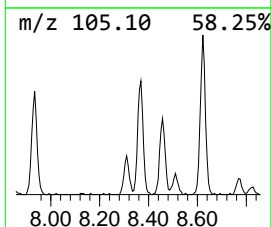
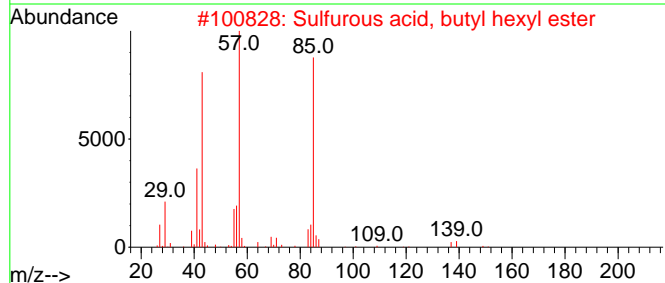
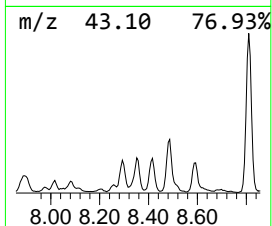
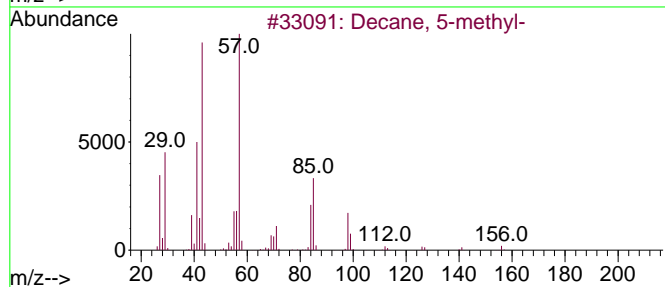
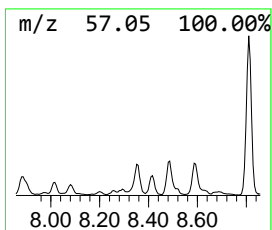
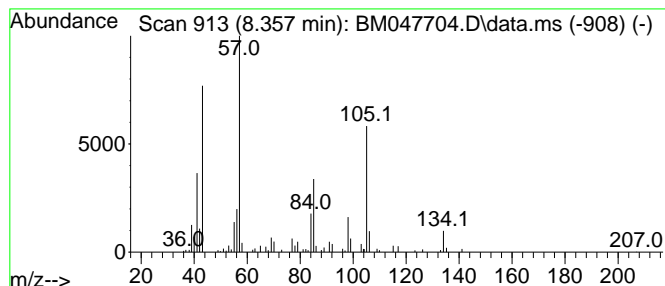
Quant Method : Z:\svoasrv\HPCHEM1\BNA_M\Methods\SFAM-EPA-BM092724.MA.M
 Quant Title : SVOA CALIBRATION

TIC Library : C:\Database\NIST20.L
 TIC Integration Parameters: LSCINT.P

 Peak Number 4 (DEL) Alkane: Straight-Chai... Concentration Rank 7

R.T.	EstConc	Area	Relative to ISTD	R.T.
8.357	2.89 ng/ul	176888	1,4-Dichlorobenzene-d4	7.816

Hit#	of 5	Tentative ID	MW	MolForm	CAS#	Qual
1		Decane, 5-methyl-	156	C11H24	013151-35-4	47
2		Sulfurous acid, butyl hexyl ester	222	C10H22O3S	1000309-17-3	43
3		Octane, 3-methyl-	128	C9H20	002216-33-3	38
4		Hydratropic acid, isohexyl ester	234	C15H22O2	1000415-06-2	38
5		Undecane, 6-methyl-	170	C12H26	017302-33-9	27



Data Path : Z:\svoasrv\HPCHEM1\BNA_M\Data\BM092824\
 Data File : BM047704.D
 Acq On : 28 Sep 2024 23:16
 Operator : RC/JU
 Sample : P3927-12DL 5X
 Misc :
 ALS Vial : 19 Sample Multiplier: 1

Instrument :
 BNA_M
 ClientSampleId :
 DDCC9DL

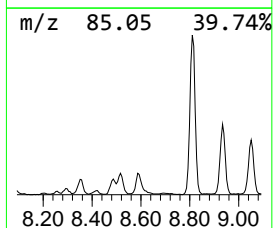
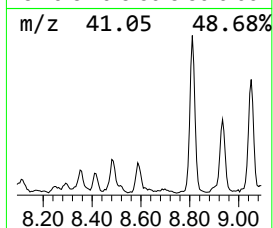
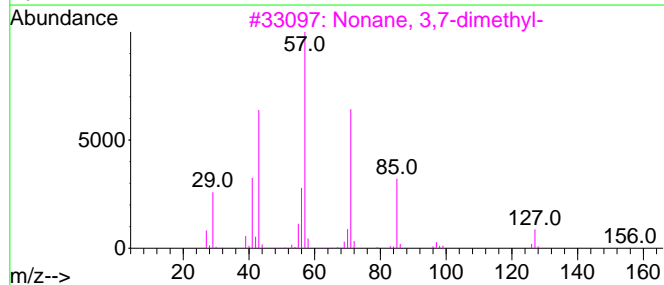
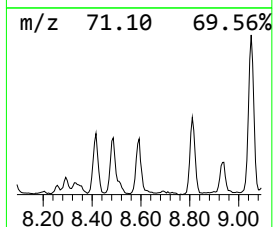
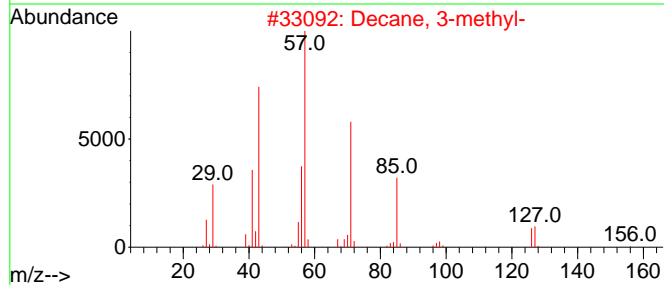
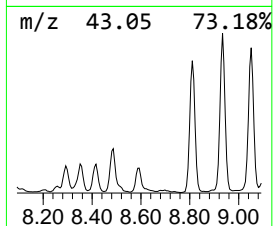
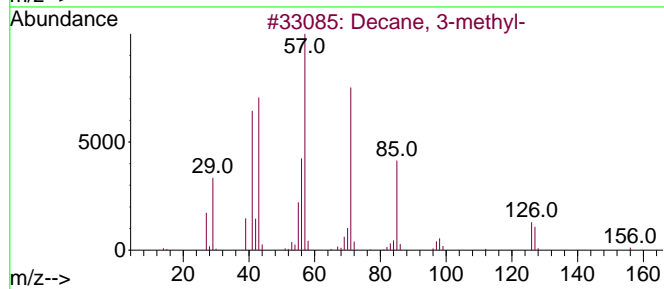
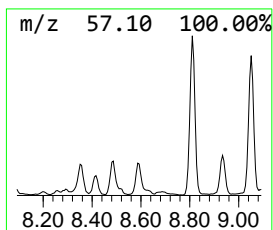
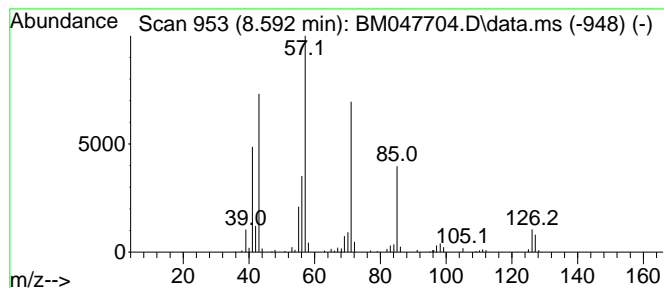
Quant Method : Z:\svoasrv\HPCHEM1\BNA_M\Methods\SFAM-EPA-BM092724.MA.M
 Quant Title : SVOA CALIBRATION

TIC Library : C:\Database\NIST20.L
 TIC Integration Parameters: LSCINT.P

 Peak Number 5 (DEL) Alkane: Straight-Chai... Concentration Rank 6

R.T.	EstConc	Area	Relative to ISTD	R.T.
8.592	3.00 ng/ul	183120	1,4-Dichlorobenzene-d4	7.816

Hit#	of 5	Tentative ID	MW	MolForm	CAS#	Qual
1		Decane, 3-methyl-	156	C11H24	013151-34-3	90
2		Decane, 3-methyl-	156	C11H24	013151-34-3	90
3		Nonane, 3,7-dimethyl-	156	C11H24	017302-32-8	80
4		1-Iodo-2-methylundecane	296	C12H25I	073105-67-6	72
5		Nonane, 5-(2-methylpropyl)-	184	C13H28	062185-53-9	64



Data Path : Z:\svoasrv\HPCHEM1\BNA_M\Data\BM092824\
 Data File : BM047704.D
 Acq On : 28 Sep 2024 23:16
 Operator : RC/JU
 Sample : P3927-12DL 5X
 Misc :
 ALS Vial : 19 Sample Multiplier: 1

Instrument :
 BNA_M
 ClientSampleId :
 DDCC9DL

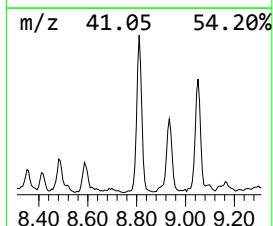
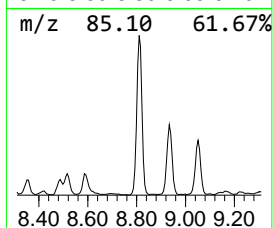
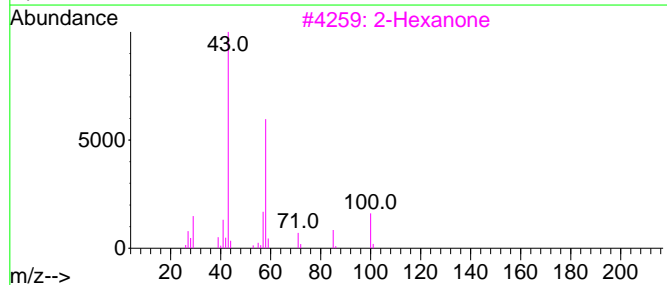
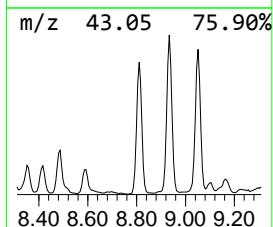
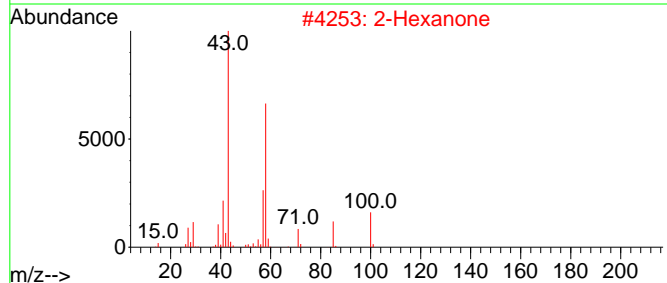
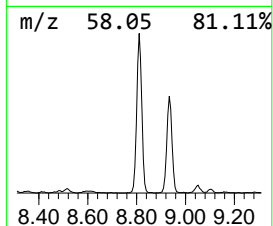
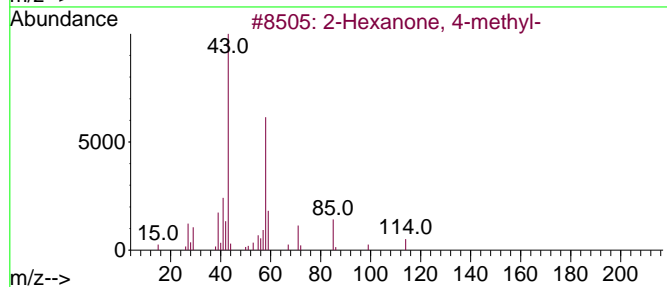
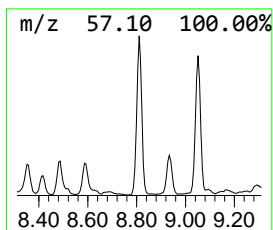
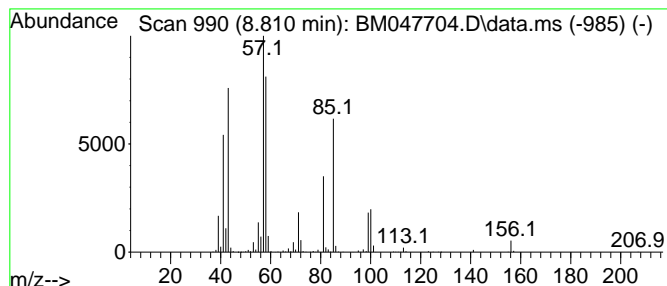
Quant Method : Z:\svoasrv\HPCHEM1\BNA_M\Methods\SFAM-EPA-BM092724.MA.M
 Quant Title : SVOA CALIBRATION

TIC Library : C:\Database\NIST20.L
 TIC Integration Parameters: LSCINT.P

 Peak Number 6 2-Hexanone, 4-methyl- Concentration Rank 1

R.T.	EstConc	Area	Relative to ISTD	R.T.
8.810	17.84 ng/ul	1090120	1,4-Dichlorobenzene-d4	7.816

Hit#	of	5	Tentative ID	MW	MolForm	CAS#	Qual
1	2-Hexanone, 4-methyl-			114	C7H14O	000105-42-0	53
2	2-Hexanone			100	C6H12O	000591-78-6	47
3	2-Hexanone			100	C6H12O	000591-78-6	47
4	1-Propene, 1-propoxy-, (Z)-			100	C6H12O	014360-78-2	43
5	2-Decanone			156	C10H20O	000693-54-9	38



Data Path : Z:\svoasrv\HPCHEM1\BNA_M\Data\BM092824\
 Data File : BM047704.D
 Acq On : 28 Sep 2024 23:16
 Operator : RC/JU
 Sample : P3927-12DL 5X
 Misc :
 ALS Vial : 19 Sample Multiplier: 1

Instrument :
 BNA_M
 ClientSampleId :
 DCC9DL

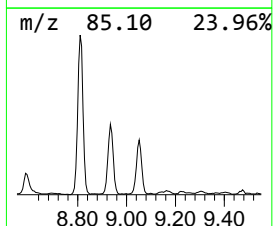
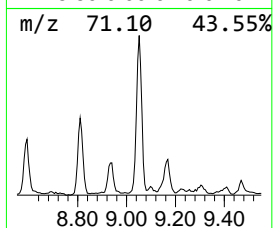
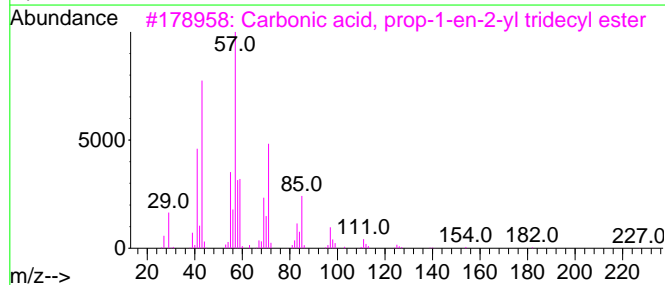
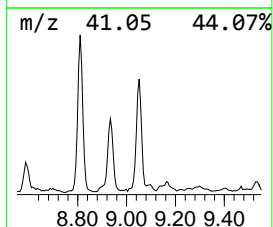
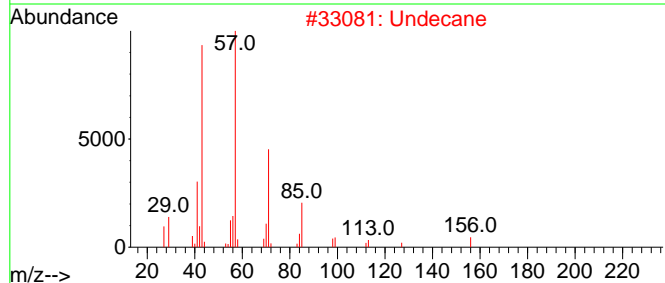
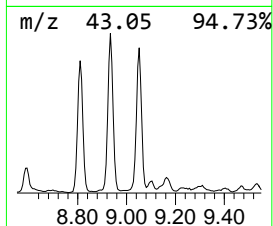
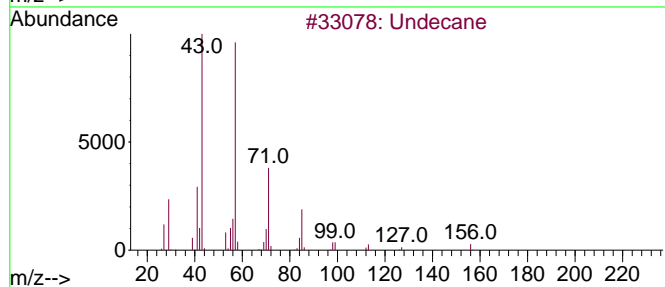
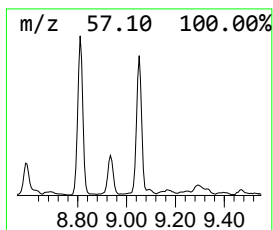
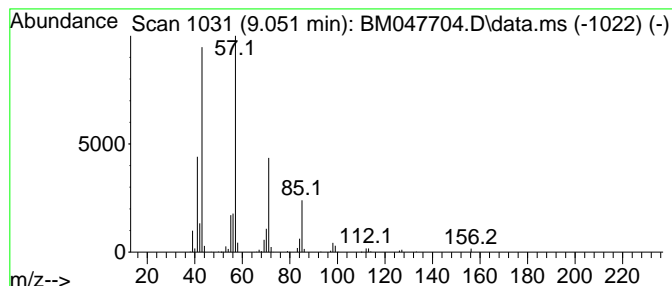
Quant Method : Z:\svoasrv\HPCHEM1\BNA_M\Methods\SFAM-EPA-BM092724.MA.M
 Quant Title : SVOA CALIBRATION

TIC Library : C:\Database\NIST20.L
 TIC Integration Parameters: LSCINT.P

 Peak Number 7 (DEL) Alkane: Straight-Chai... Concentration Rank 3

R.T.	EstConc	Area	Relative to ISTD	R.T.
9.051	10.65 ng/ul	650894	1,4-Dichlorobenzene-d4	7.816

Hit#	of 5	Tentative ID	MW	MolForm	CAS#	Qual
1		Undecane	156	C11H24	001120-21-4	91
2		Undecane	156	C11H24	001120-21-4	91
3		Carbonic acid, prop-1-en-2-yl tr...	284	C17H32O3	1000382-90-8	83
4		Hexadecane	226	C16H34	000544-76-3	83
5		Undecane	156	C11H24	001120-21-4	83



Data Path : Z:\svoasrv\HPCHEM1\BNA_M\Data\BM092824\
 Data File : BM047704.D
 Acq On : 28 Sep 2024 23:16
 Operator : RC/JU
 Sample : P3927-12DL 5X
 Misc :
 ALS Vial : 19 Sample Multiplier: 1

Instrument :
 BNA_M
 ClientSampleId :
 DCC9DL

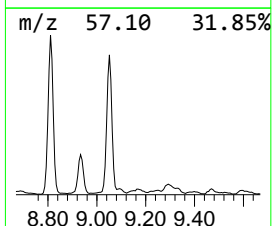
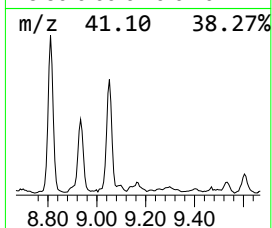
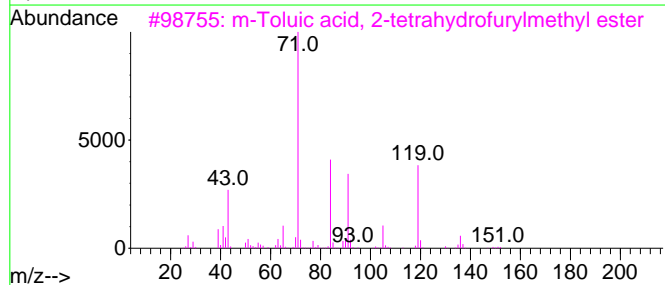
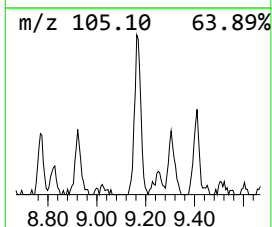
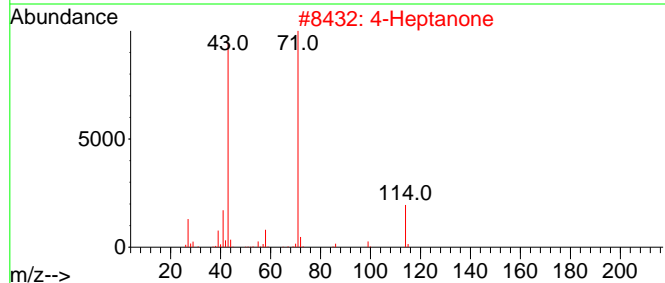
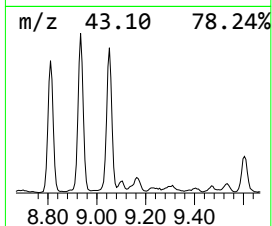
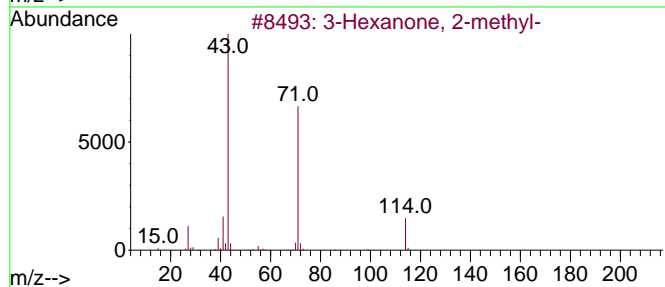
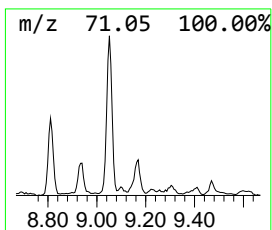
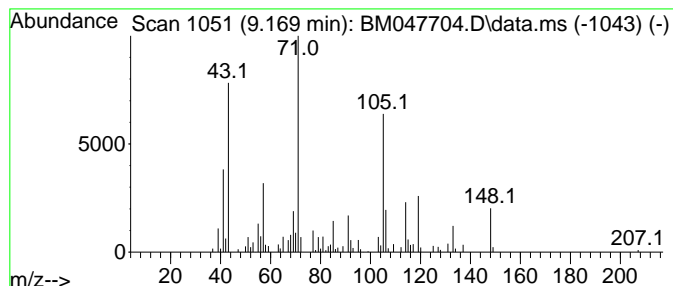
Quant Method : Z:\svoasrv\HPCHEM1\BNA_M\Methods\SFAM-EPA-BM092724.MA.M
 Quant Title : SVOA CALIBRATION

TIC Library : C:\Database\NIST20.L
 TIC Integration Parameters: LSCINT.P

 Peak Number 8 unknown-01 Concentration Rank 8

R.T.	EstConc	Area	Relative to ISTD	R.T.
9.169	2.62 ng/ul	159849	1,4-Dichlorobenzene-d4	7.816

Hit#	of 5	Tentative ID	MW	MolForm	CAS#	Qual
1		3-Hexanone, 2-methyl-	114	C7H14O	007379-12-6	43
2		4-Heptanone	114	C7H14O	000123-19-3	43
3		m-Toluic acid, 2-tetrahydrofuryl...	220	C13H16O3	039252-19-2	43
4		4-Heptanone	114	C7H14O	000123-19-3	43
5		1,1-Di(isobutyl)acetone	170	C11H22O	040264-43-5	43



Data Path : Z:\svoasrv\HPCHEM1\BNA_M\Data\BM092824\
 Data File : BM047704.D
 Acq On : 28 Sep 2024 23:16
 Operator : RC/JU
 Sample : P3927-12DL 5X
 Misc :
 ALS Vial : 19 Sample Multiplier: 1

Instrument :
 BNA_M
 ClientSampleId :
 DDCC9DL

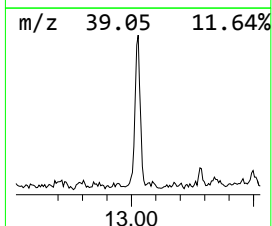
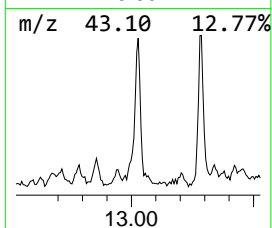
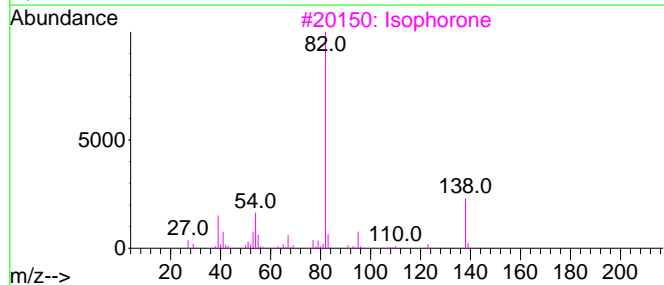
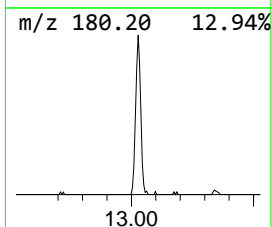
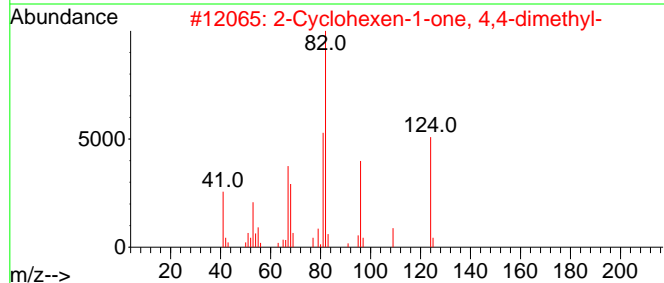
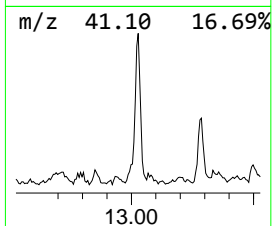
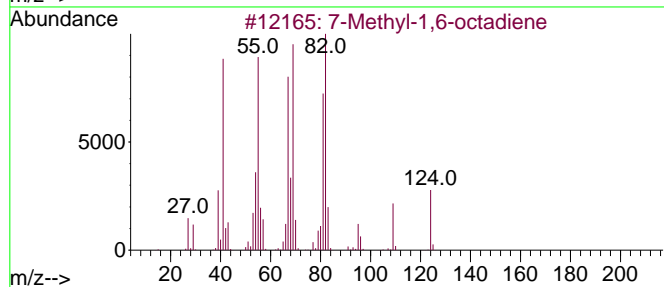
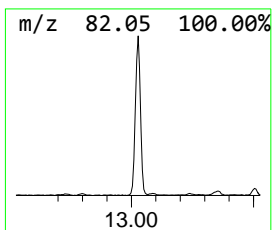
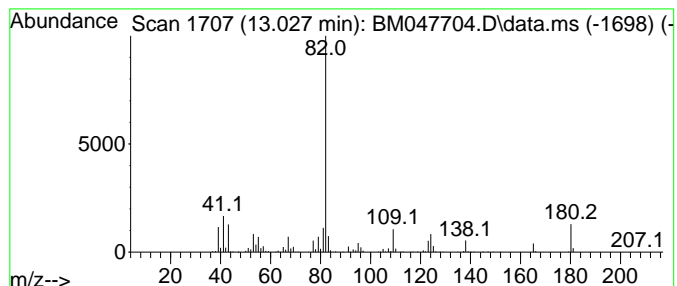
Quant Method : Z:\svoasrv\HPCHEM1\BNA_M\Methods\SFAM-EPA-BM092724.MA.M
 Quant Title : SVOA CALIBRATION

TIC Library : C:\Database\NIST20.L
 TIC Integration Parameters: LSCINT.P

 Peak Number 9 7-Methyl-1,6-octadiene Concentration Rank 5

R.T.	EstConc	Area	Relative to ISTD	R.T.
13.028	4.39 ng/ul	443265	Acenaphthene-d10	14.445

Hit#	of	Tentative ID	MW	MolForm	CAS#	Qual
1	5	7-Methyl-1,6-octadiene	124	C9H16	042152-47-6	58
2		2-Cyclohexen-1-one, 4,4-dimethyl-	124	C8H12O	001073-13-8	53
3		Isophorone	138	C9H14O	000078-59-1	50
4		Isophorone	138	C9H14O	000078-59-1	47
5		8-Oxabicyclo[3.2.1]oct-6-en-2-on...	166	C10H14O2	058705-36-5	45



Data Path : Z:\svoasrv\HPCHEM1\BNA_M\Data\BM092824\
 Data File : BM047704.D
 Acq On : 28 Sep 2024 23:16
 Operator : RC/JU
 Sample : P3927-12DL 5X
 Misc :
 ALS Vial : 19 Sample Multiplier: 1

Instrument :
 BNA_M
 ClientSampleId :
 DDCC9DL

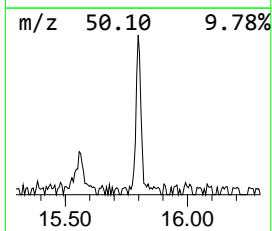
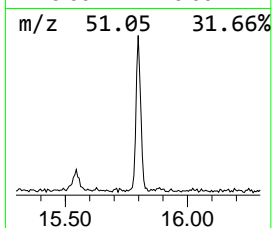
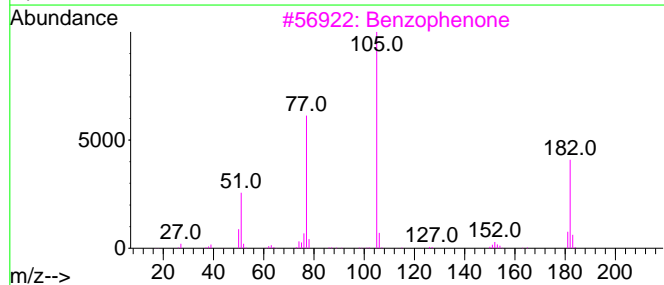
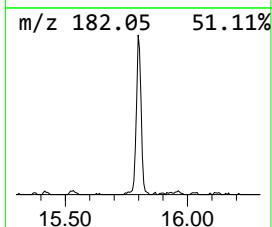
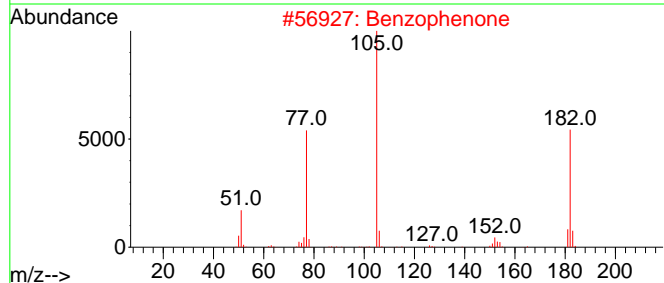
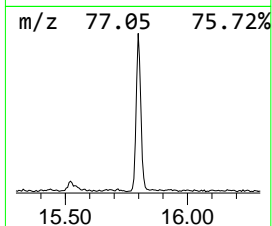
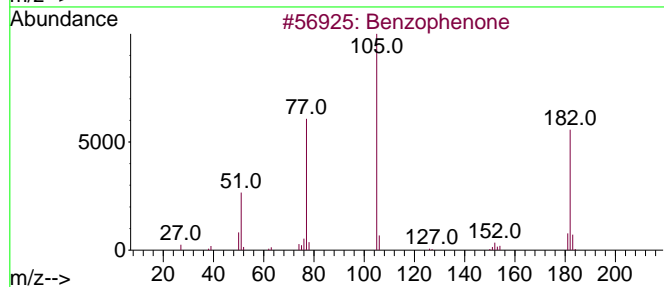
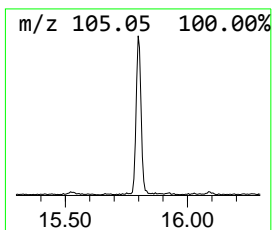
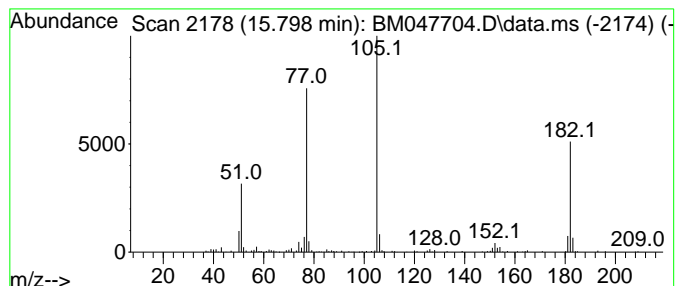
Quant Method : Z:\svoasrv\HPCHEM1\BNA_M\Methods\SFAM-EPA-BM092724.MA.M
 Quant Title : SVOA CALIBRATION

TIC Library : C:\Database\NIST20.L
 TIC Integration Parameters: LSCINT.P

 Peak Number 10 Benzophenone Concentration Rank 9

R.T.	EstConc	Area	Relative to ISTD	R.T.
15.798	2.41 ng/ul	242844	Acenaphthene-d10	14.445

Hit#	of 5	Tentative ID	MW	MolForm	CAS#	Qual
1		Benzophenone	182	C13H10O	000119-61-9	96
2		Benzophenone	182	C13H10O	000119-61-9	94
3		Benzophenone	182	C13H10O	000119-61-9	94
4		Benzophenone	182	C13H10O	000119-61-9	91
5		Benzophenone	182	C13H10O	000119-61-9	87



Data Path : Z:\svoasrv\HPCHEM1\BNA_M\Data\BM092824\
 Data File : BM047704.D
 Acq On : 28 Sep 2024 23:16
 Operator : RC/JU
 Sample : P3927-12DL 5X
 Misc :
 ALS Vial : 19 Sample Multiplier: 1

Instrument :
 BNA_M
 ClientSampleId :
 DDCC9DL

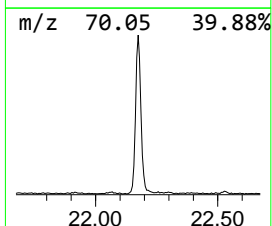
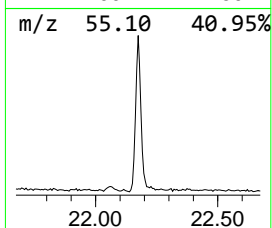
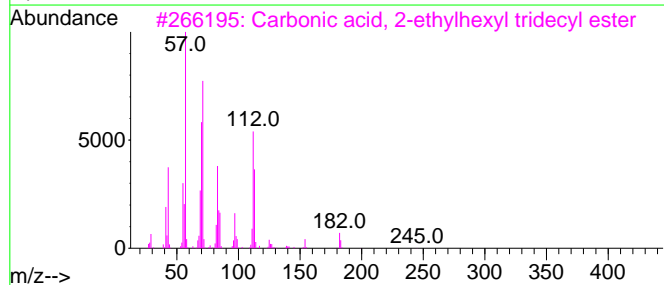
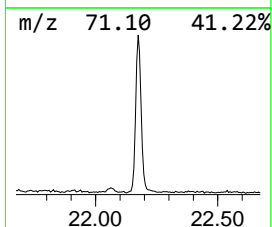
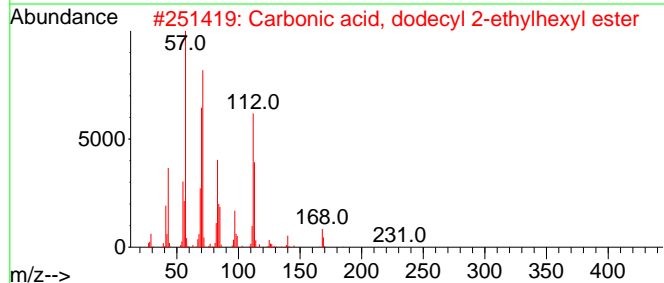
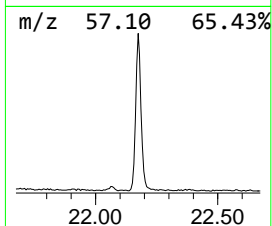
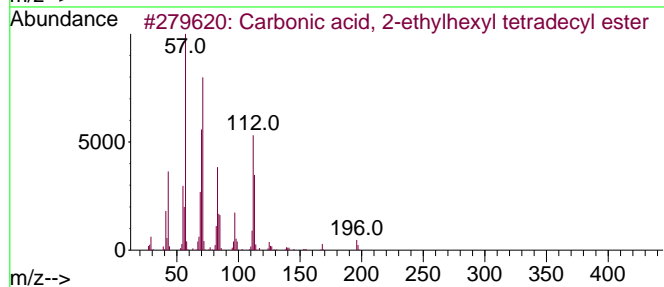
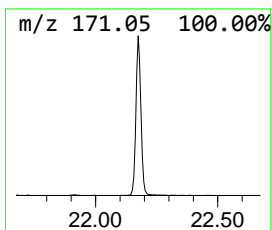
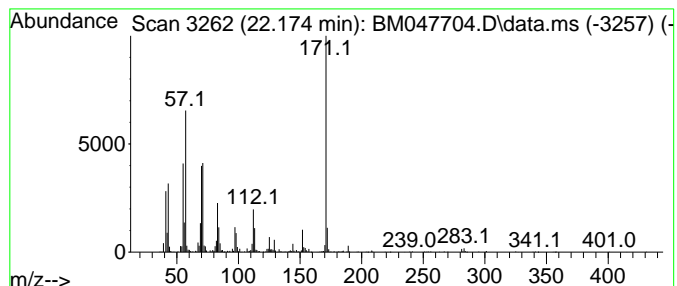
Quant Method : Z:\svoasrv\HPCHEM1\BNA_M\Methods\SFAM-EPA-BM092724.MA.M
 Quant Title : SVOA CALIBRATION

TIC Library : C:\Database\NIST20.L
 TIC Integration Parameters: LSCINT.P

 Peak Number 11 Carbonic acid, 2-ethylhexyl... Concentration Rank 4

R.T.	EstConc	Area	Relative to ISTD	R.T.
22.174	8.31 ng/ul	974573	Chrysene-d12	21.409

Hit#	of	5	Tentative ID	MW	MolForm	CAS#	Qual
1			Carbonic acid, 2-ethylhexyl tetr...	370	C23H46O3	1010383-14-1	53
2			Carbonic acid, dodecyl 2-ethylhe...	342	C21H42O3	1000383-13-9	49
3			Carbonic acid, 2-ethylhexyl trid...	356	C22H44O3	1000383-14-0	49
4			Nonanedioic acid, bis(2-ethylhex...	412	C25H48O4	000103-24-2	47
5			Carbonic acid, 2-ethylhexyl pent...	384	C24H48O3	1000383-14-2	43



Data Path : Z:\svoasrv\HPCHEM1\BNA_M\Data\BM092824\
 Data File : BM047704.D
 Acq On : 28 Sep 2024 23:16
 Operator : RC/JU
 Sample : P3927-12DL 5X
 Misc :
 ALS Vial : 19 Sample Multiplier: 1

Instrument :
 BNA_M
 ClientSampleId :
 DDCC9DL

Quant Method : Z:\svoasrv\HPCHEM1\BNA_M\Methods\SFAM-EPA-BM092724.MA.M
 Quant Title : SVOA CALIBRATION

TIC Library : C:\Database\NIST20.L
 TIC Integration Parameters: LSCINT.P

TIC Top Hit name	RT	EstConc	Units	Response	--Internal Standard--			
					#	RT	Resp	Conc
(DEL) Alkane: S...	5.840	2.2	ng/u1	132597	1	7.816	1222420	20.0
(DEL) Alkane: S...	6.875	2.1	ng/u1	130351	1	7.816	1222420	20.0
(DEL) Alkane: S...	7.451	12.0	ng/u1	734158	1	7.816	1222420	20.0
(DEL) Alkane: S...	8.357	2.9	ng/u1	176888	1	7.816	1222420	20.0
(DEL) Alkane: S...	8.592	3.0	ng/u1	183120	1	7.816	1222420	20.0
2-Hexanone, 4-m...	8.810	17.8	ng/u1	1090120	1	7.816	1222420	20.0
(DEL) Alkane: S...	9.051	10.7	ng/u1	650894	1	7.816	1222420	20.0
unknown-01	9.169	2.6	ng/u1	159849	1	7.816	1222420	20.0
7-Methyl-1,6-oc...	13.028	4.4	ng/u1	443265	3	14.445	2018930	20.0
Benzophenone	15.798	2.4	ng/u1	242844	3	14.445	2018930	20.0
Carbonic acid, ...	22.174	8.3	ng/u1	974573	5	21.409	2346170	20.0