

Data Path : Z:\SVOASRV\HPCHEM1\BNA_M\DATA\BM100118\
 Data File : BM016920.D
 Acq On : 01 Oct 2018 13:26
 Operator : MJ/SJ
 Sample : J5127-03
 Misc :
 ALS Vial : 8 Sample Multiplier: 1

Instrument :
 BNA_M
 ClientSampleId :
 C0B67

Integration Parameters: LSCINT.P

Integrator: RTE
 Smoothing : OFF
 Sampling : 1
 Start Thrs: 0.2
 Stop Thrs : 0

Filtering: 5
 Min Area: 0.1 % of largest Peak
 Max Peaks: 100
 Peak Location: TOP

If leading or trailing edge < 100 prefer < Baseline drop else tangent >
 Peak separation: 5

Method : Z:\SVOASRV\HPCHEM1\BNA_M\METHODS\SOM-EPA-BM091018MA.M
 Title : SVOA CALIBRATION

Signal : TIC

peak #	R.T. min	first scan	max scan	last scan	PK TY	peak height	corr. area	corr. % max.	% of total
1	3.193	31	35	39	rVB	1261347	1320811	36.07%	4.026%
2	7.340	736	740	748	rBV5	3998	8631	0.24%	0.026%
3	7.710	794	803	813	rBV	1247320	1957140	53.45%	5.966%
4	8.028	854	857	863	rVB4	5402	8129	0.22%	0.025%
5	8.216	886	889	897	rVB6	4484	10063	0.27%	0.031%
6	8.816	984	991	993	rBV5	4340	8570	0.23%	0.026%
7	8.928	1002	1010	1018	rBV3	15620	29276	0.80%	0.089%
8	9.175	1046	1052	1059	rVB4	5350	11945	0.33%	0.036%
9	9.775	1152	1154	1159	rVB2	4981	5519	0.15%	0.017%
10	9.845	1163	1166	1173	rVB4	4330	8346	0.23%	0.025%
11	9.928	1175	1180	1185	rBV4	4796	9870	0.27%	0.030%
12	10.034	1192	1198	1201	rVB3	3928	5638	0.15%	0.017%
13	10.357	1247	1253	1259	rBV	35711	56543	1.54%	0.172%
14	10.492	1265	1276	1283	rBV	1655936	2805276	76.61%	8.551%
15	10.622	1293	1298	1301	rBV5	6712	8999	0.25%	0.027%
16	10.657	1301	1304	1308	rVB3	5896	8013	0.22%	0.024%
17	10.739	1314	1318	1323	rVB6	5332	11003	0.30%	0.034%
18	10.881	1338	1342	1343	rBV2	6234	8040	0.22%	0.025%
19	10.892	1343	1344	1349	rVB4	4864	5803	0.16%	0.018%
20	10.957	1351	1355	1363	rVB3	8863	16112	0.44%	0.049%
21	11.181	1389	1393	1396	rBV4	7425	11653	0.32%	0.036%
22	11.251	1400	1405	1409	rBV5	5886	8345	0.23%	0.025%
23	11.522	1445	1451	1454	rBV5	4805	8850	0.24%	0.027%
24	11.816	1497	1501	1505	rVB2	4879	7837	0.21%	0.024%
25	11.922	1511	1519	1525	rBV	39729	64170	1.75%	0.196%
26	12.069	1541	1544	1547	rVB3	5569	5943	0.16%	0.018%
27	12.151	1556	1558	1563	rVB6	4438	6323	0.17%	0.019%
28	12.622	1632	1638	1644	rVB9	5551	15636	0.43%	0.048%
29	12.698	1648	1651	1653	rBV3	5304	7074	0.19%	0.022%
30	12.751	1657	1660	1661	rBV3	4703	5445	0.15%	0.017%
31	12.775	1661	1664	1669	rVV7	10532	18260	0.50%	0.056%
32	12.833	1671	1674	1679	rBV4	9795	17228	0.47%	0.053%
33	12.886	1679	1683	1687	rVV3	13738	17985	0.49%	0.055%
34	12.939	1688	1692	1697	rVB8	10970	22559	0.62%	0.069%

Data Path : Z:\SVOASRV\HPCHEM1\BNA_M\DATA\BM100118\
 Data File : BM016920.D
 Acq On : 01 Oct 2018 13:26
 Operator : MJ/SJ
 Sample : J5127-03
 Misc :
 ALS Vial : 8 Sample Multiplier: 1

Instrument :
 BNA_M
 ClientSampleId :
 C0B67

Integration Parameters: LSCINT.P

Integrator: RTE
 Smoothing : OFF
 Sampling : 1
 Start Thrs: 0.2
 Stop Thrs : 0

Filtering: 5
 Min Area: 0.1 % of largest Peak
 Max Peaks: 100
 Peak Location: TOP

If leading or trailing edge < 100 prefer < Baseline drop else tangent >
 Peak separation: 5

Method : Z:\SVOASRV\HPCHEM1\BNA_M\METHODS\SOM-EPA-BM091018MA.M
 Title : SVOA CALIBRATION

35	13.033	1705	1708	1712	rBV5	6669	9771	0.27%	0.030%
36	13.127	1720	1724	1730	rBV4	24143	46773	1.28%	0.143%
37	13.180	1730	1733	1736	rVV4	13139	16925	0.46%	0.052%
38	13.275	1745	1749	1752	rBV5	11645	19243	0.53%	0.059%
39	13.616	1805	1807	1810	rBV4	11630	14720	0.40%	0.045%
40	13.669	1812	1816	1819	rBV4	23346	36518	1.00%	0.111%
41	13.769	1828	1833	1837	rBV2	107100	157658	4.31%	0.481%
42	13.845	1842	1846	1849	rVV3	73152	105829	2.89%	0.323%
43	13.886	1850	1853	1860	rVB7	45974	92658	2.53%	0.282%
44	14.092	1883	1888	1891	rBV6	59561	107080	2.92%	0.326%
45	14.180	1899	1903	1911	rVB3	192660	313276	8.56%	0.955%
46	14.257	1911	1916	1920	rBV5	63769	120475	3.29%	0.367%
47	14.351	1922	1932	1941	rVV2	2061325	3482862	95.11%	10.616%
48	14.445	1943	1948	1952	rBV6	54478	119702	3.27%	0.365%
49	14.886	2019	2023	2029	rBV2	199696	316705	8.65%	0.965%
50	15.074	2051	2055	2061	rBV9	121866	279399	7.63%	0.852%
51	15.145	2062	2067	2072	rVV2	338046	523342	14.29%	1.595%
52	15.627	2146	2149	2154	rVB	291287	439118	11.99%	1.339%
53	16.104	2223	2230	2234	rBV2	1172958	2193382	59.90%	6.686%
54	16.927	2367	2370	2377	rVB	1066880	1523724	41.61%	4.645%
55	17.104	2396	2400	2408	rBV	2274981	3661859	100.00%	11.162%
56	20.021	2893	2896	2900	rVB	1290368	1423790	38.88%	4.340%
57	20.298	2941	2943	2948	rVB	1422398	1658238	45.28%	5.055%
58	20.762	3020	3022	3030	rVB4	768834	922506	25.19%	2.812%
59	21.292	3108	3112	3115	rBV	2428080	3211840	87.71%	9.790%
60	21.321	3115	3117	3122	rVB2	1343234	1413439	38.60%	4.308%
61	21.627	3167	3169	3173	rVB2	437718	503989	13.76%	1.536%
62	23.521	3486	3491	3501	rVB2	1888495	3570601	97.51%	10.884%

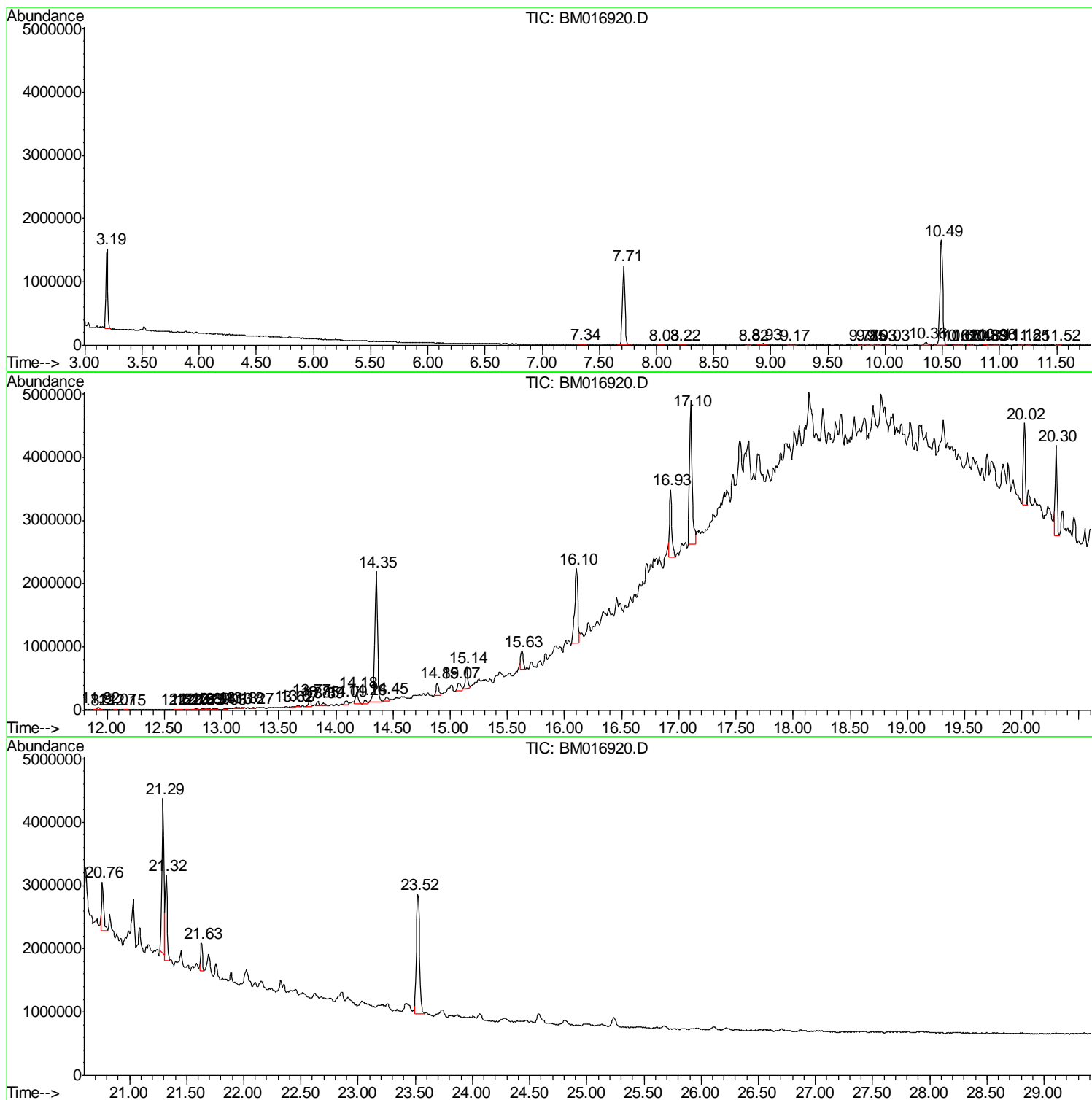
Sum of corrected areas: 32806457

Data Path : Z:\SVOASRV\HPCHEM1\BNA_M\DATA\BM100118\
 Data File : BM016920.D
 Acq On : 01 Oct 2018 13:26
 Operator : MJ/SJ
 Sample : J5127-03
 Misc :
 ALS Vial : 8 Sample Multiplier: 1

Instrument :
 BNA_M
 ClientSampleId :
 C0B67

Quant Method : Z:\SVOASRV\HPCHEM1\BNA_M\METHODS\SOM-EPA-BM091018MA.M
 Quant Title : SVOA CALIBRATION

TIC Library : C:\DATABASE\NIST02.L
 TIC Integration Parameters: LSCINT.P



Data Path : Z:\SVOASRV\HPCHEM1\BNA_M\DATA\BM100118\
 Data File : BM016920.D
 Acq On : 01 Oct 2018 13:26
 Operator : MJ/SJ
 Sample : J5127-03
 Misc :
 ALS Vial : 8 Sample Multiplier: 1

Instrument :
 BNA_M
 ClientSampleId :
 C0B67

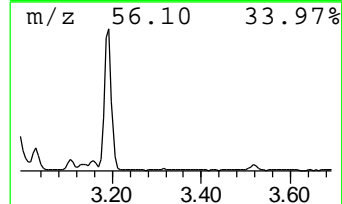
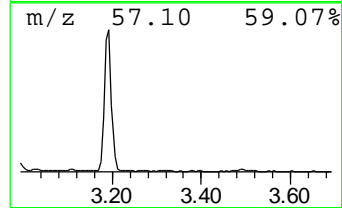
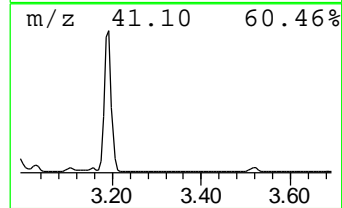
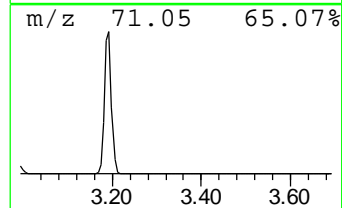
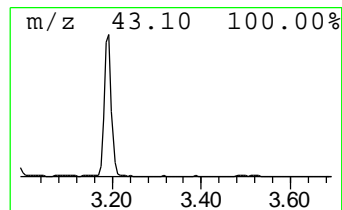
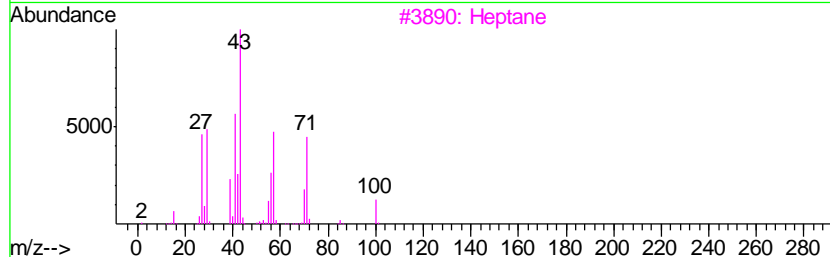
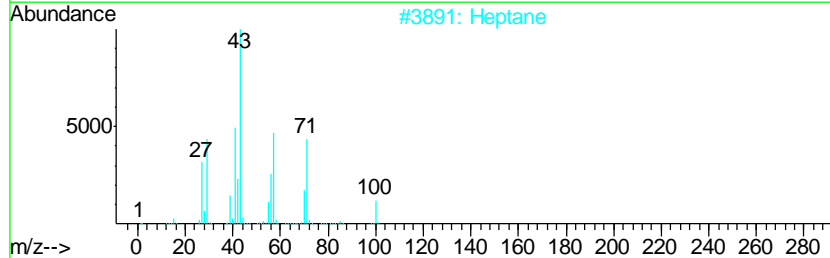
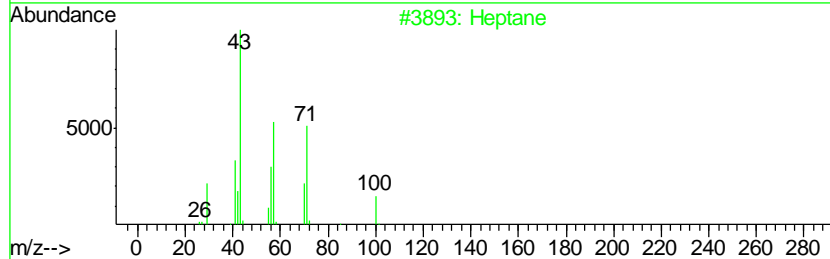
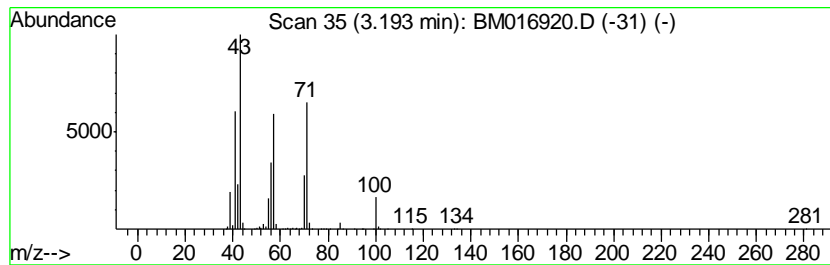
Quant Method : Z:\SVOASRV\HPCHEM1\BNA_M\METHODS\SOM-EPA-BM091018MA.M
 Quant Title : SVOA CALIBRATION

TIC Library : C:\DATABASE\NIST02.L
 TIC Integration Parameters: LSCINT.P

 Peak Number 1 (DEL) Alkane: Straight-Chai... Concentration Rank 1

R.T.	EstConc	Area	Relative to ISTD	R.T.
3.19	13.50 ng/ul	1320810	1,4-Dichlorobenzene-d4	7.71

Hit#	of	Tentative ID	MW	MolForm	CAS#	Qual
1	5	Heptane	100	C7H16	000142-82-5	91
2		Heptane	100	C7H16	000142-82-5	91
3		Heptane	100	C7H16	000142-82-5	91
4		Heptane	100	C7H16	000142-82-5	87
5		Hexane, 3-methyl-	100	C7H16	000589-34-4	40



Data Path : Z:\SVOASRV\HPCHEM1\BNA_M\DATA\BM100118\
 Data File : BM016920.D
 Acq On : 01 Oct 2018 13:26
 Operator : MJ/SJ
 Sample : J5127-03
 Misc :
 ALS Vial : 8 Sample Multiplier: 1

Instrument :
 BNA_M
 ClientSampleID :
 C0B67

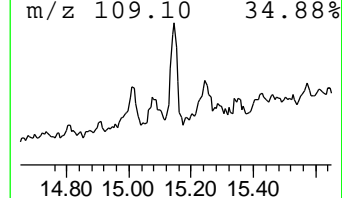
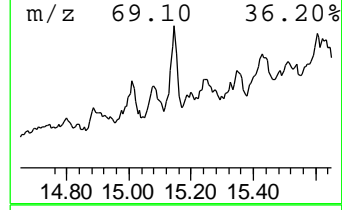
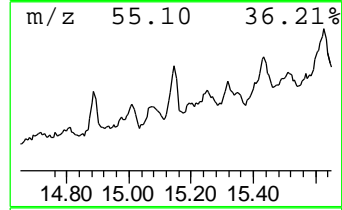
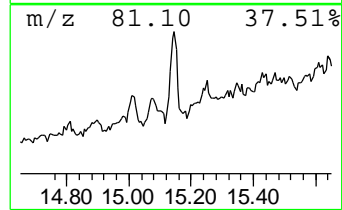
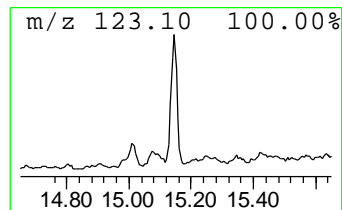
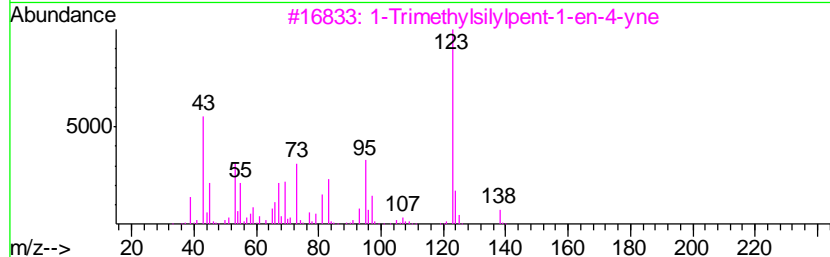
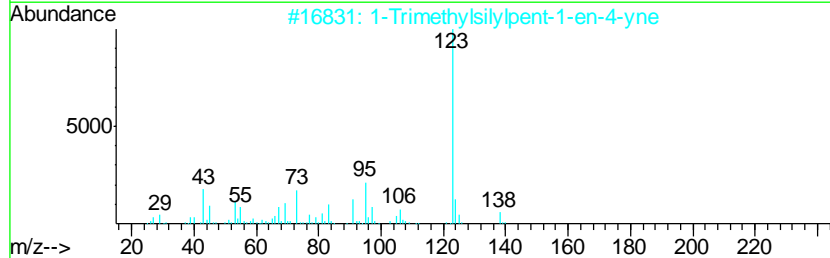
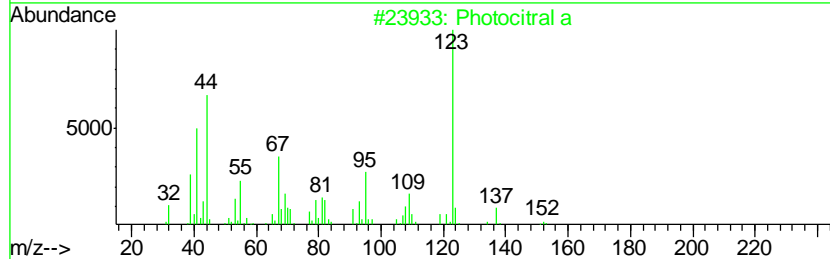
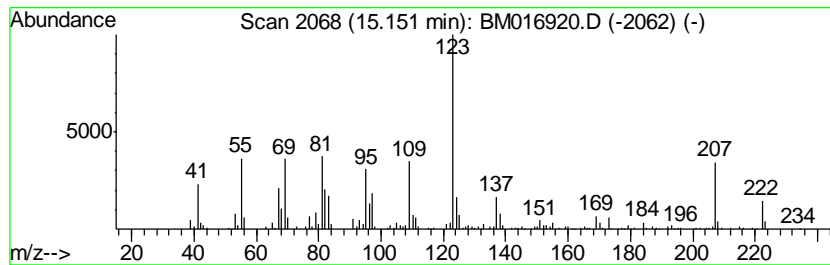
Quant Method : Z:\SVOASRV\HPCHEM1\BNA_M\METHODS\SOM-EPA-BM091018MA.M
 Quant Title : SVOA CALIBRATION

TIC Library : C:\DATABASE\NIST02.L
 TIC Integration Parameters: LSCINT.P

 Peak Number 2 Photocitral a Concentration Rank 8

R.T.	EstConc	Area	Relative to ISTD	R.T.
15.15	3.01 ng/ul	523342	Acenaphthene-d10	14.35

Hit#	of	Tentative ID	MW	MolForm	CAS#	Qual
1	5	Photocitral a	152	C10H16O	1000292-85-0	50
2		1-Trimethylsilylpent-1-en-4-yne	138	C8H14Si	079516-25-9	49
3		1-Trimethylsilylpent-1-en-4-yne	138	C8H14Si	079516-25-9	49
4		Ethanone, 1-[3-[2-methyl-2-(5-me...	222	C13H18O3	080114-28-9	46
5		1-(1-Ethyl-2,3-dimethyl-cyclopen...	166	C11H18O	1000185-18-6	43



Data Path : Z:\SVOASRV\HPCHEM1\BNA_M\DATA\BM100118\
 Data File : BM016920.D
 Acq On : 01 Oct 2018 13:26
 Operator : MJ/SJ
 Sample : J5127-03
 Misc :
 ALS Vial : 8 Sample Multiplier: 1

Instrument :
 BNA_M
 ClientSampled :
 C0B67

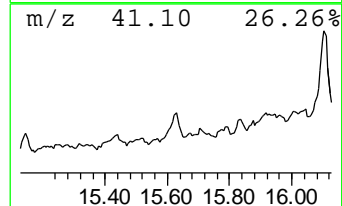
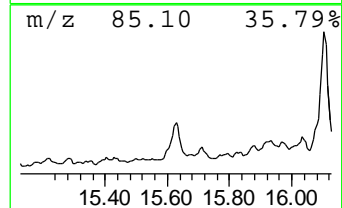
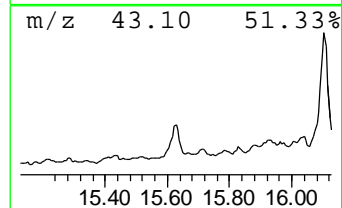
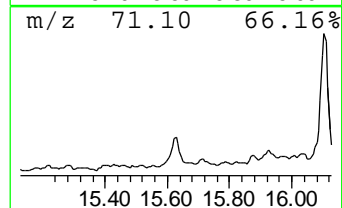
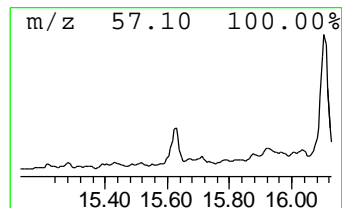
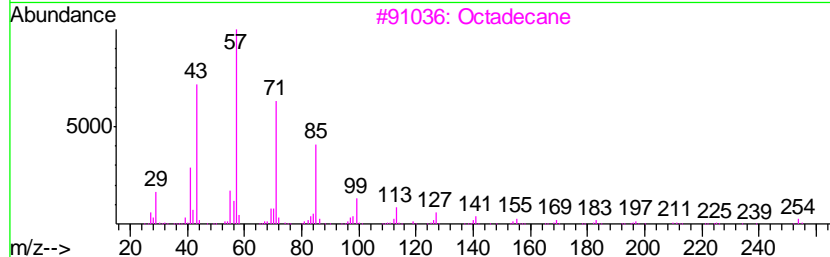
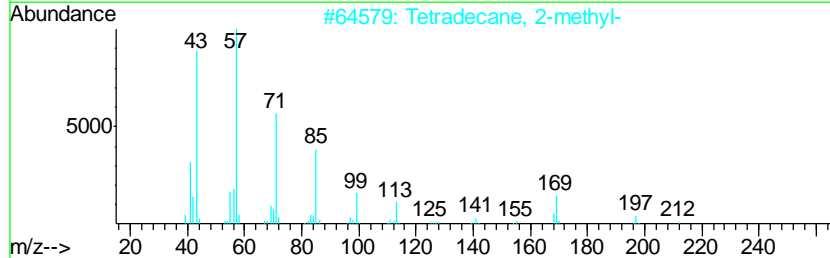
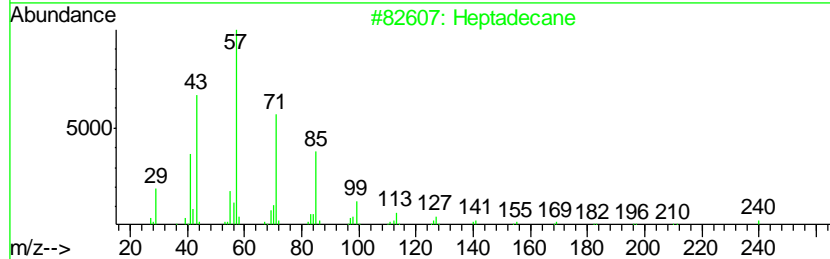
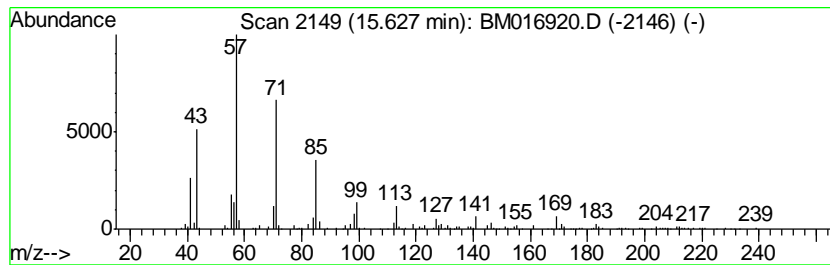
Quant Method : Z:\SVOASRV\HPCHEM1\BNA_M\METHODS\SOM-EPA-BM091018MA.M
 Quant Title : SVOA CALIBRATION

TIC Library : C:\DATABASE\NIST02.L
 TIC Integration Parameters: LSCINT.P

 Peak Number 3 (DEL) Alkane: Straight-Chai... Concentration Rank 9

R.T.	EstConc	Area	Relative to ISTD	R.T.
15.63	2.52 ng/ul	439118	Acenaphthene-d10	14.35

Hit#	of	Tentative ID	MW	MolForm	CAS#	Qual
1	5	Heptadecane	240	C17H36	000629-78-7	86
2		Tetradecane, 2-methyl-	212	C15H32	001560-95-8	86
3		Octadecane	254	C18H38	000593-45-3	86
4		Octacosane	394	C28H58	000630-02-4	86
5		Tetradecane, 3-methyl-	212	C15H32	018435-22-8	86



Data Path : Z:\SVOASRV\HPCHEM1\BNA_M\DATA\BM100118\
 Data File : BM016920.D
 Acq On : 01 Oct 2018 13:26
 Operator : MJ/SJ
 Sample : J5127-03
 Misc :
 ALS Vial : 8 Sample Multiplier: 1

Instrument :
 BNA_M
 ClientSampled :
 C0B67

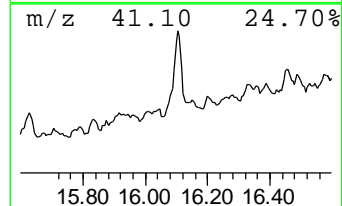
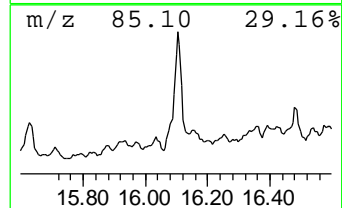
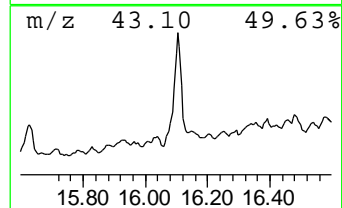
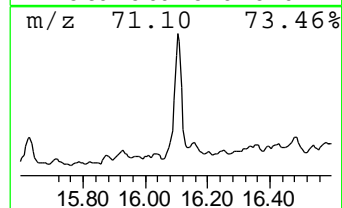
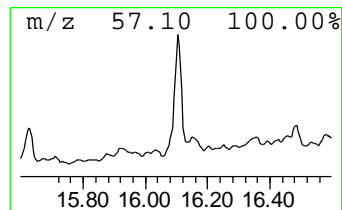
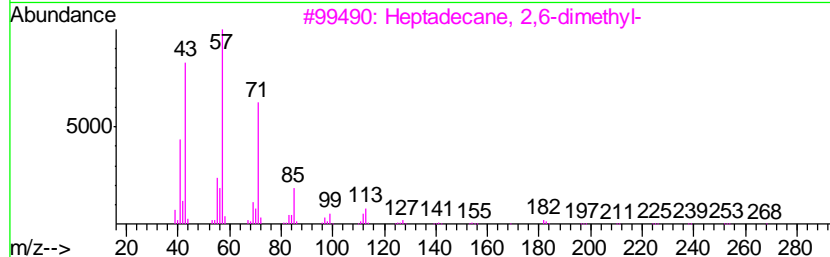
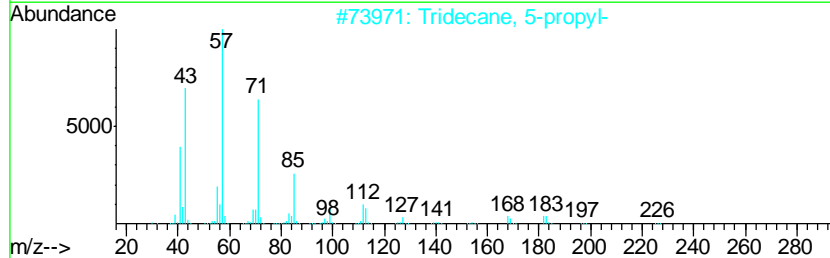
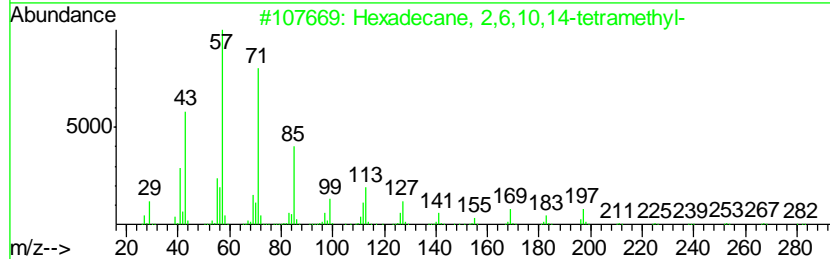
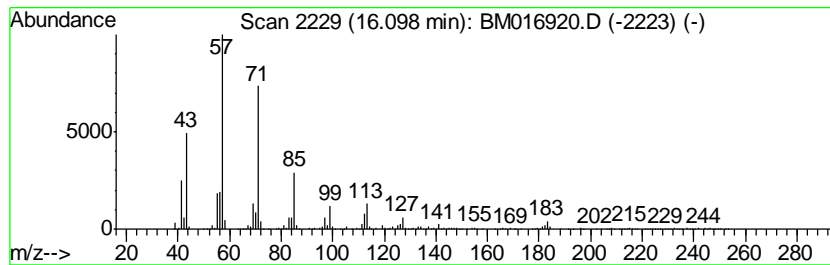
Quant Method : Z:\SVOASRV\HPCHEM1\BNA_M\METHODS\SOM-EPA-BM091018MA.M
 Quant Title : SVOA CALIBRATION

TIC Library : C:\DATABASE\NIST02.L
 TIC Integration Parameters: LSCINT.P

 Peak Number 4 (DEL) Alkane: Straight-Chai... Concentration Rank 2

R.T.	EstConc	Area	Relative to ISTD	R.T.
16.10	11.98 ng/ul	2193380	Phenanthrene-d10	17.10

Hit#	of	Tentative ID	MW	MolForm	CAS#	Qual
1	5	Hexadecane, 2,6,10,14-tetramethyl-	282	C20H42	000638-36-8	83
2		Tridecane, 5-propyl-	226	C16H34	055045-11-9	83
3		Heptadecane, 2,6-dimethyl-	268	C19H40	054105-67-8	83
4		Octadecane, 2,6-dimethyl-	282	C20H42	075163-97-2	78
5		Heptane, 2,6-dimethyl-	128	C9H20	001072-05-5	74



Data Path : Z:\SVOASRV\HPCHEM1\BNA_M\DATA\BM100118\
 Data File : BM016920.D
 Acq On : 01 Oct 2018 13:26
 Operator : MJ/SJ
 Sample : J5127-03
 Misc :
 ALS Vial : 8 Sample Multiplier: 1

Instrument :
 BNA_M
 ClientSampleID :
 C0B67

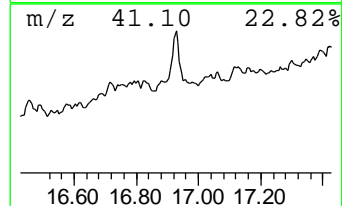
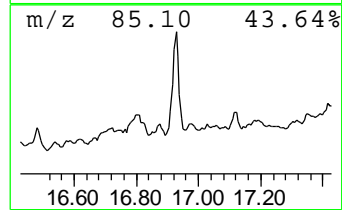
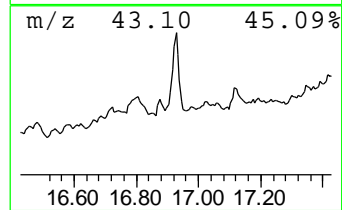
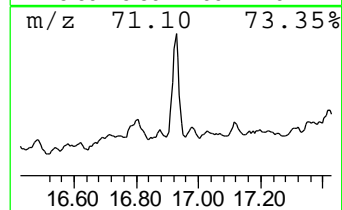
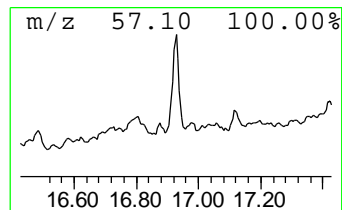
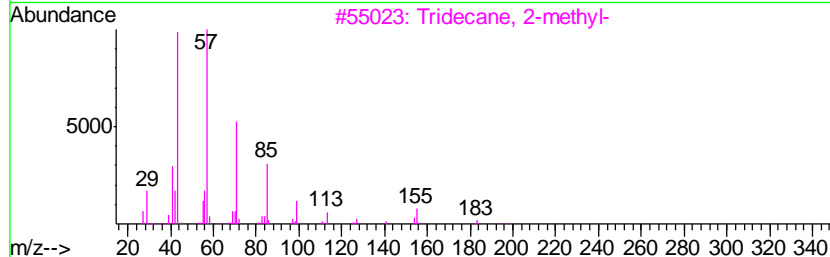
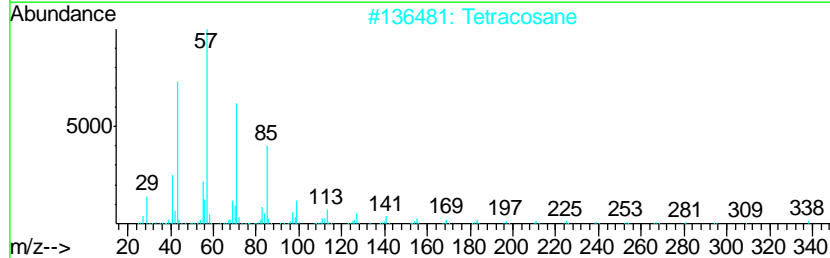
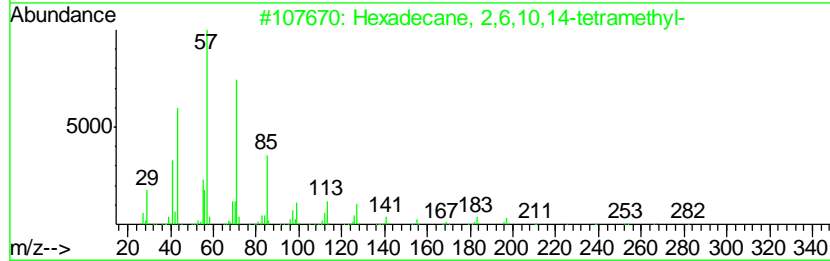
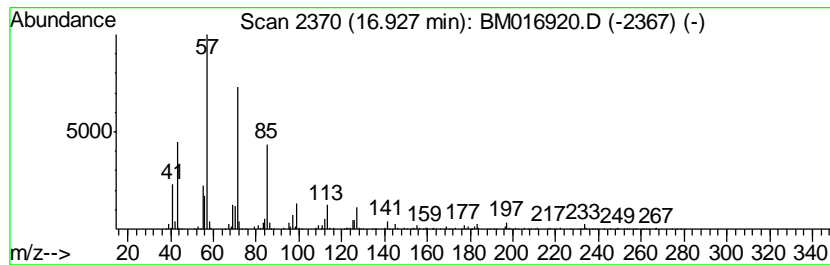
Quant Method : Z:\SVOASRV\HPCHEM1\BNA_M\METHODS\SOM-EPA-BM091018MA.M
 Quant Title : SVOA CALIBRATION

TIC Library : C:\DATABASE\NIST02.L
 TIC Integration Parameters: LSCINT.P

 Peak Number 5 (DEL) Alkane: Straight-Chai... Concentration Rank 5

R.T.	EstConc	Area	Relative to ISTD	R.T.
16.93	8.32 ng/ul	1523720	Phenanthrene-d10	17.10

Hit#	of	Tentative ID	MW	MolForm	CAS#	Qual
1	5	Hexadecane, 2,6,10,14-tetramethyl-	282	C20H42	000638-36-8	91
2		Tetracosane	338	C24H50	000646-31-1	91
3		Tridecane, 2-methyl-	198	C14H30	001560-96-9	90
4		Hexadecane	226	C16H34	000544-76-3	90
5		Nonadecane, 2-methyl-	282	C20H42	001560-86-7	90



Data Path : Z:\SVOASRV\HPCHEM1\BNA_M\DATA\BM100118\
 Data File : BM016920.D
 Acq On : 01 Oct 2018 13:26
 Operator : MJ/SJ
 Sample : J5127-03
 Misc :
 ALS Vial : 8 Sample Multiplier: 1

Instrument :
 BNA_M
 ClientSampled :
 C0B67

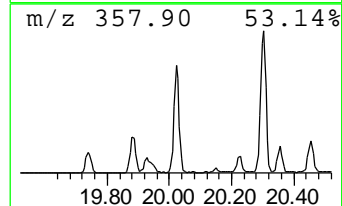
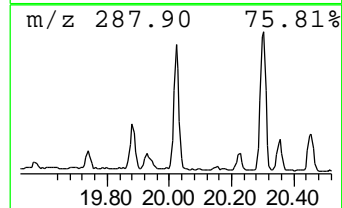
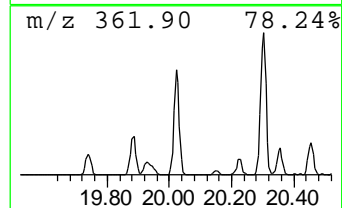
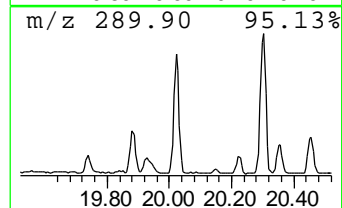
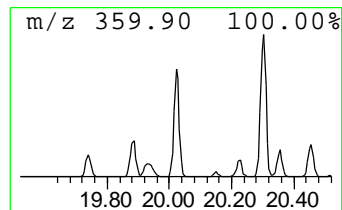
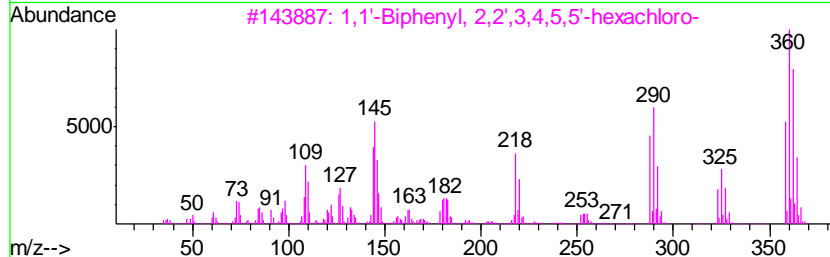
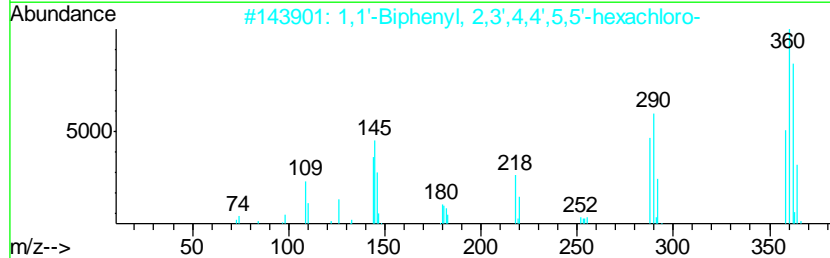
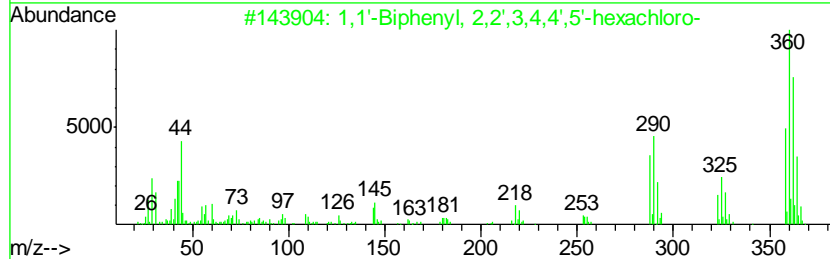
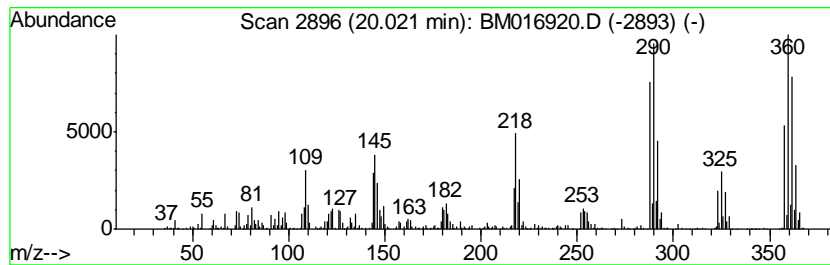
Quant Method : Z:\SVOASRV\HPCHEM1\BNA_M\METHODS\SOM-EPA-BM091018MA.M
 Quant Title : SVOA CALIBRATION

TIC Library : C:\DATABASE\NIST02.L
 TIC Integration Parameters: LSCINT.P

 Peak Number 6 1,1'-Biphenyl, 2,2',3,4,4',... Concentration Rank 4

R.T.	EstConc	Area	Relative to ISTD	R.T.
20.02	8.87 ng/ul	1423790	Chrysene-d12	21.29

Hit#	of	Tentative ID	MW	MolForm	CAS#	Qual
1	5	1,1'-Biphenyl, 2,2',3,4,4',5'-he...	358	C12H4Cl6	035065-28-2	99
2		1,1'-Biphenyl, 2,3',4,4',5,5'-he...	358	C12H4Cl6	052663-72-6	99
3		1,1'-Biphenyl, 2,2',3,4,5,5'-hex...	358	C12H4Cl6	052712-04-6	99
4		1,1'-Biphenyl, 2,2',3,4,4',6-Hex...	358	C12H4Cl6	056030-56-9	99
5		1,1'-Biphenyl, 2,2',3,4,4',5'-he...	358	C12H4Cl6	035065-28-2	99



Data Path : Z:\SVOASRV\HPCHEM1\BNA_M\DATA\BM100118\
 Data File : BM016920.D
 Acq On : 01 Oct 2018 13:26
 Operator : MJ/SJ
 Sample : J5127-03
 Misc :
 ALS Vial : 8 Sample Multiplier: 1

Instrument :
 BNA_M
 ClientSampled :
 C0B67

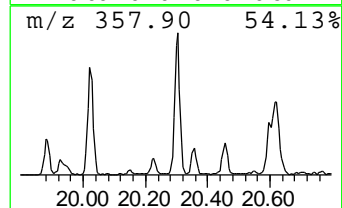
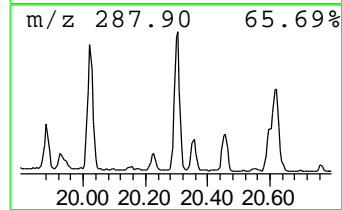
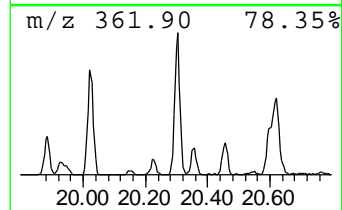
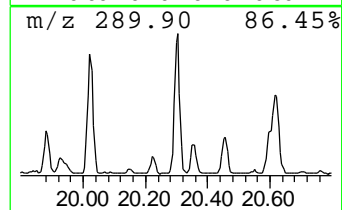
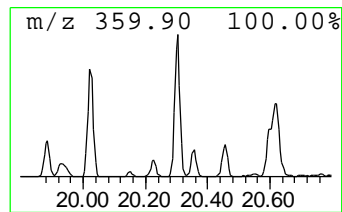
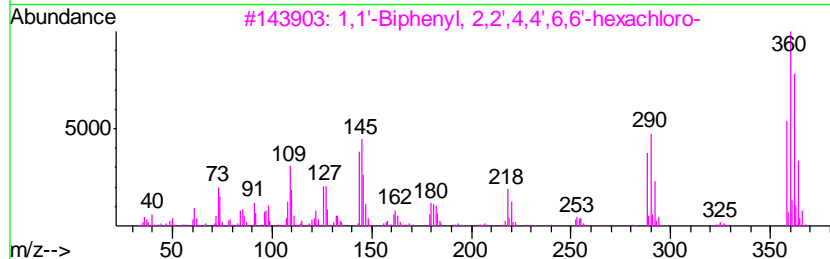
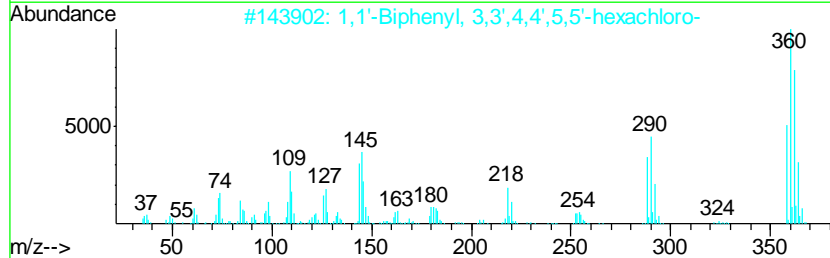
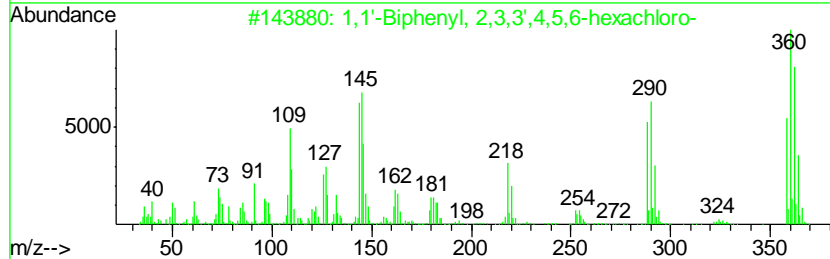
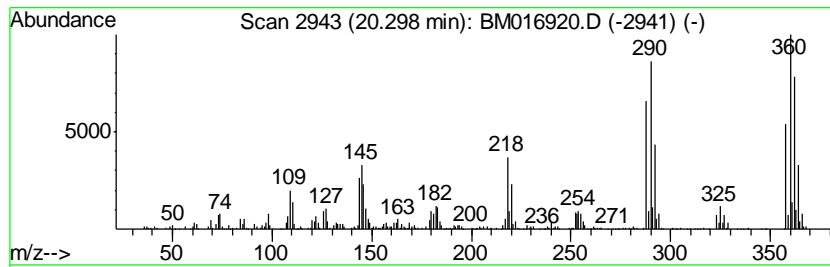
Quant Method : Z:\SVOASRV\HPCHEM1\BNA_M\METHODS\SOM-EPA-BM091018MA.M
 Quant Title : SVOA CALIBRATION

TIC Library : C:\DATABASE\NIST02.L
 TIC Integration Parameters: LSCINT.P

 Peak Number 7 1,1'-Biphenyl, 2,3,3',4,5,6... Concentration Rank 3

R.T.	EstConc	Area	Relative to ISTD	R.T.
20.30	10.33 ng/ul	1658240	Chrysene-d12	21.29

Hit#	of	Tentative ID	MW	MolForm	CAS#	Qual
1	5	1,1'-Biphenyl, 2,3,3',4,5,6-hexa...	358	C12H4Cl6	041411-62-5	99
2		1,1'-Biphenyl, 3,3',4,4',5,5'-he...	358	C12H4Cl6	032774-16-6	99
3		1,1'-Biphenyl, 2,2',4,4',6,6'-he...	358	C12H4Cl6	033979-03-2	99
4		1,1'-Biphenyl, 2,3,3',4,4',5-hex...	358	C12H4Cl6	038380-08-4	99
5		1,1'-Biphenyl, 2,2',3,3',4,5-hex...	358	C12H4Cl6	055215-18-4	96



Data Path : Z:\SVOASRV\HPCHEM1\BNA_M\DATA\BM100118\
 Data File : BM016920.D
 Acq On : 01 Oct 2018 13:26
 Operator : MJ/SJ
 Sample : J5127-03
 Misc :
 ALS Vial : 8 Sample Multiplier: 1

Instrument :
 BNA_M
 ClientSampleId :
 C0B67

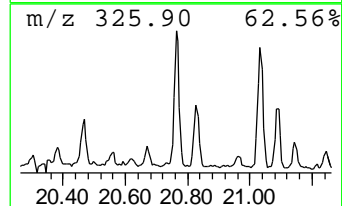
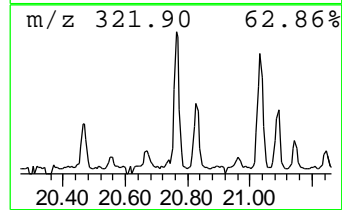
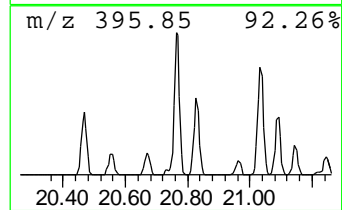
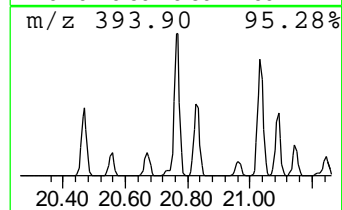
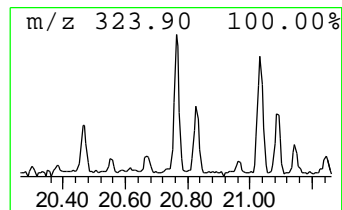
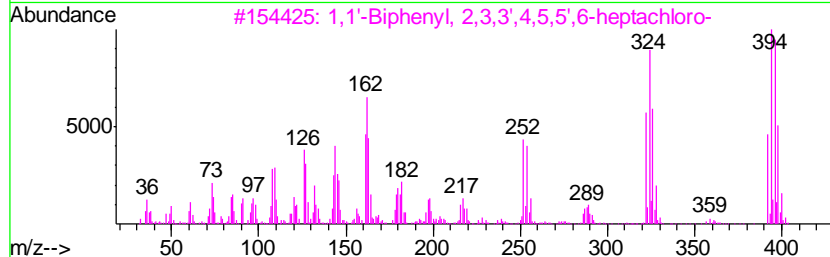
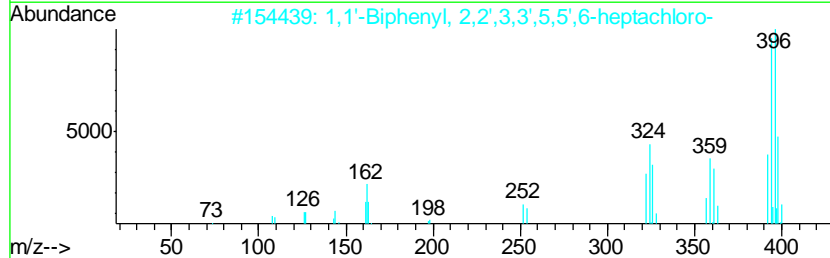
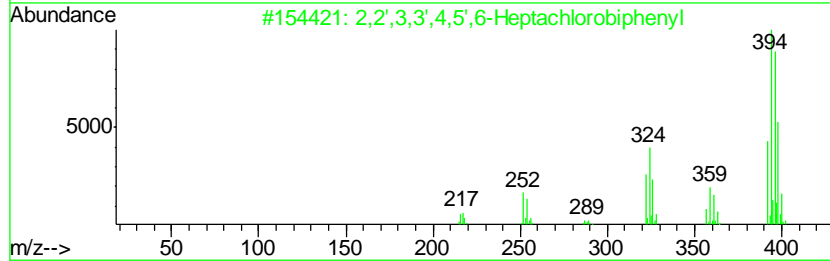
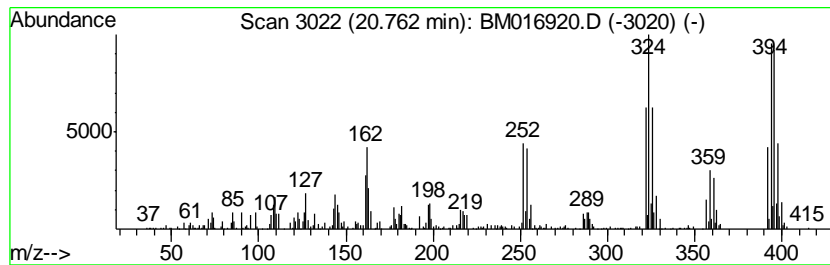
Quant Method : Z:\SVOASRV\HPCHEM1\BNA_M\METHODS\SOM-EPA-BM091018MA.M
 Quant Title : SVOA CALIBRATION

TIC Library : C:\DATABASE\NIST02.L
 TIC Integration Parameters: LSCINT.P

 Peak Number 8 2,2',3,3',4,5',6-Heptachlor... Concentration Rank 6

R.T.	EstConc	Area	Relative to ISTD	R.T.
20.76	5.74 ng/ul	922506	Chrysene-d12	21.29

Hit#	of	Tentative ID	MW	MolForm	CAS#	Qual
1	5	2,2',3,3',4,5',6-Heptachlorobiph...	392	C12H3Cl7	040186-70-7	99
2		1,1'-Biphenyl, 2,2',3,3',5,5',6-...	392	C12H3Cl7	052663-67-9	99
3		1,1'-Biphenyl, 2,3,3',4,5,5',6-h...	392	C12H3Cl7	074472-51-8	99
4		1,1'-Biphenyl, 2,2',3,4,4',5,6-H...	392	C12H3Cl7	074472-47-2	99
5		1,1'-Biphenyl, 2,3,3',4,4',5,6-H...	392	C12H3Cl7	041411-64-7	99



Data Path : Z:\SVOASRV\HPCHEM1\BNA_M\DATA\BM100118\
 Data File : BM016920.D
 Acq On : 01 Oct 2018 13:26
 Operator : MJ/SJ
 Sample : J5127-03
 Misc :
 ALS Vial : 8 Sample Multiplier: 1

Instrument :
 BNA_M
 ClientSampleId :
 C0B67

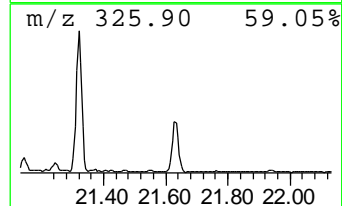
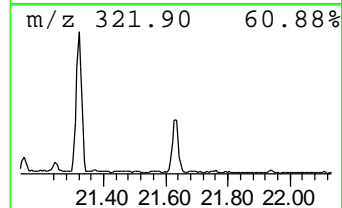
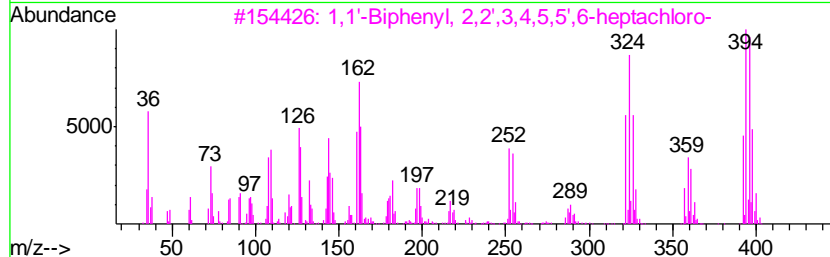
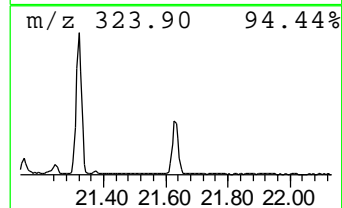
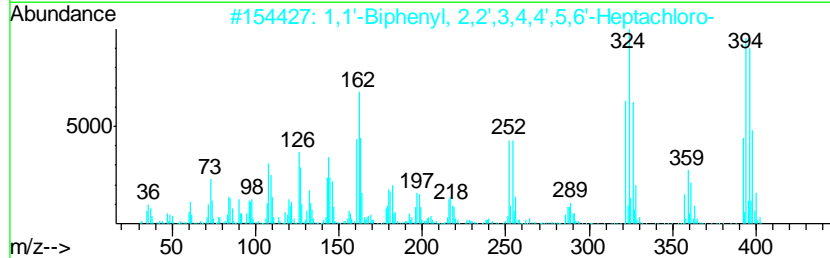
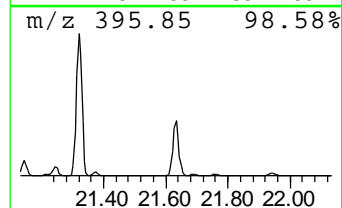
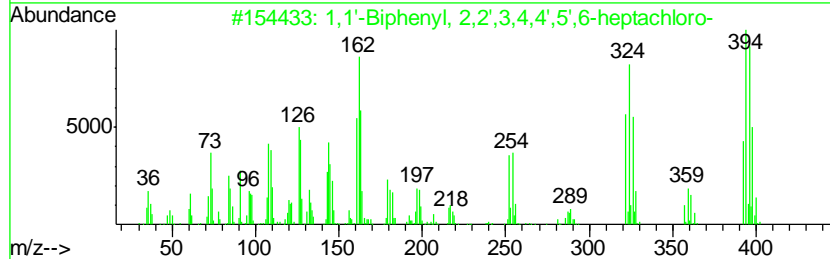
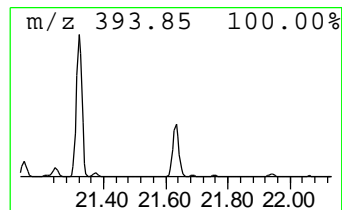
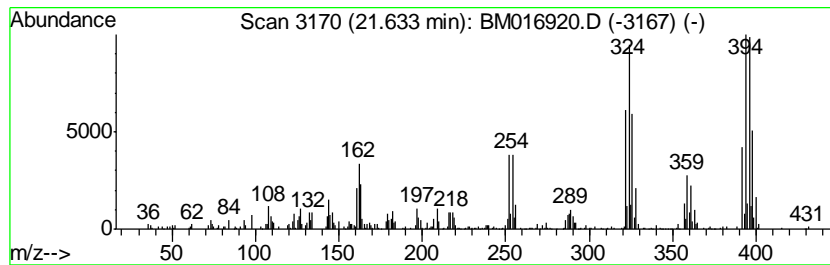
Quant Method : Z:\SVOASRV\HPCHEM1\BNA_M\METHODS\SOM-EPA-BM091018MA.M
 Quant Title : SVOA CALIBRATION

TIC Library : C:\DATABASE\NIST02.L
 TIC Integration Parameters: LSCINT.P

 Peak Number 9 1,1'-Biphenyl, 2,2',3,4,4',... Concentration Rank 7

R.T.	EstConc	Area	Relative to ISTD	R.T.
21.63	3.14 ng/ul	503989	Chrysene-d12	21.29

Hit#	of	Tentative ID	MW	MolForm	CAS#	Qual
1	5	1,1'-Biphenyl, 2,2',3,4,4',5',6-...	392	C12H3Cl7	052663-69-1	99
2		1,1'-Biphenyl, 2,2',3,4,4',5,6'-...	392	C12H3Cl7	060145-23-5	99
3		1,1'-Biphenyl, 2,2',3,4,5,5',6-h...	392	C12H3Cl7	052712-05-7	99
4		1,1'-Biphenyl, 2,3,3',4,5,5',6-h...	392	C12H3Cl7	074472-51-8	99
5		1,1'-Biphenyl, 2,2',3,3',5,5',6-...	392	C12H3Cl7	052663-67-9	96



Data Path : Z:\SVOASRV\HPCHEM1\BNA_M\DATA\BM100118\
 Data File : BM016920.D
 Acq On : 01 Oct 2018 13:26
 Operator : MJ/SJ
 Sample : J5127-03
 Misc :
 ALS Vial : 8 Sample Multiplier: 1

Instrument :
 BNA_M
 ClientSampleId :
 C0B67

Quant Method : Z:\SVOASRV\HPCHEM1\BNA_M\METHODS\SOM-EPA-BM091018MA.M
 Quant Title : SVOA CALIBRATION

TIC Library : C:\DATABASE\NIST02.L
 TIC Integration Parameters: LSCINT.P

TIC Top Hit name	RT	EstConc	Units	Response	--Internal Standard--			
					#	RT	Resp	Conc
(DEL) Alkane: Str...	3.19	13.5	ng/ul	1320810	1	7.71	1957140	20.0
Photocitral a	15.15	3.0	ng/ul	523342	3	14.35	3482860	20.0
(DEL) Alkane: Str...	15.63	2.5	ng/ul	439118	3	14.35	3482860	20.0
(DEL) Alkane: Str...	16.10	12.0	ng/ul	2193380	4	17.10	3661860	20.0
(DEL) Alkane: Str...	16.93	8.3	ng/ul	1523720	4	17.10	3661860	20.0
1,1'-Biphenyl, 2,...	20.02	8.9	ng/ul	1423790	5	21.29	3211840	20.0
1,1'-Biphenyl, 2,...	20.30	10.3	ng/ul	1658240	5	21.29	3211840	20.0
2,2',3,3',4,5',6-...	20.76	5.7	ng/ul	922506	5	21.29	3211840	20.0
1,1'-Biphenyl, 2,...	21.63	3.1	ng/ul	503989	5	21.29	3211840	20.0