

Data Path : Z:\SVOASRV\HPCHEM1\BNA M\DATA\BM100319\  
 Data File : BM023008.D  
 Acq On : 06 Oct 2019 02:17  
 Operator : JU  
 Sample : K5057-04  
 Misc :  
 ALS Vial : 25 Sample Multiplier: 1

Instrument :  
 BNA\_M  
 ClientSampleId :  
 DBAH7

Quant Time: Oct 06 23:36:27 2019  
 Quant Method : Z:\SVOASRV\HPCHEM1\BNA\_M\METHODS\SOM-EPA-BM092719MA.M  
 Quant Title : SVOA CALIBRATION  
 QLast Update : Fri Oct 04 16:45:59 2019  
 Response via : Initial Calibration

Internal Standards	R.T.	QIon	Response	Conc	Units	Dev(Min)
1) 1,4-Dichlorobenzene-d4	7.79	152	228077	20.00	ng/ul	0.00
18) Naphthalene-d8	10.57	136	998510	20.00	ng/ul	-0.01
36) Acenaphthene-d10	14.42	164	607901	20.00	ng/ul	0.00
62) Phenanthrene-d10	17.16	188	1091005	20.00	ng/ul	0.00
78) Chrysene-d12	21.34	240	788997	20.00	ng/ul	-0.01
86) Perylene-d12	23.59	264	878296	20.00	ng/ul	-0.02

## System Monitoring Compounds

3) 1,4-Dioxane-d8	3.27	96	10684	2.03	ng/uL	0.00
5) Phenol-d5	6.96	99	196042	9.73	ng/ul	0.00
7) Bis-(2-Chloroethyl)ether-d	7.12	67	118765	10.77	ng/ul	0.00
9) 2-Chlorophenol-d4	7.32	132	165776	10.22	ng/ul	0.00
13) 4-Methylphenol-d8	8.49	113	164559	9.97	ng/ul	-0.01
19) Nitrobenzene-d5	8.94	128	77304	10.03	ng/ul	0.00
22) 2-Nitrophenol-d4	9.66	143	75355	8.96	ng/ul	0.00
26) 2,4-Dichlorophenol-d3	10.20	165	165394	9.87	ng/ul	-0.01
29) 4-Chloroaniline-d4	10.71	131	226082	11.11	ng/ul	0.00
44) Dimethylphthalate-d6	13.83	166	512375	10.86	ng/ul	0.00
47) Acenaphthylene-d8	14.12	160	587852	10.79	ng/ul	0.00
52) 4-Nitrophenol-d4	14.62	143	30510	3.27	ng/ul	0.00
58) Fluorene-d10	15.42	176	432150	10.75	ng/ul	0.00
63) 4,6-Dinitro-2-methylphenol	15.53	200	26931	3.79	ng/ul	0.00
71) Anthracene-d10	17.26	188	604127	11.34	ng/ul	-0.01
79) Pyrene-d10	19.55	212	580377	13.67	ng/ul	0.00
90) Benzo(a)pyrene-d12	23.45	264	528150	11.62	ng/ul	-0.02

## Target Compounds

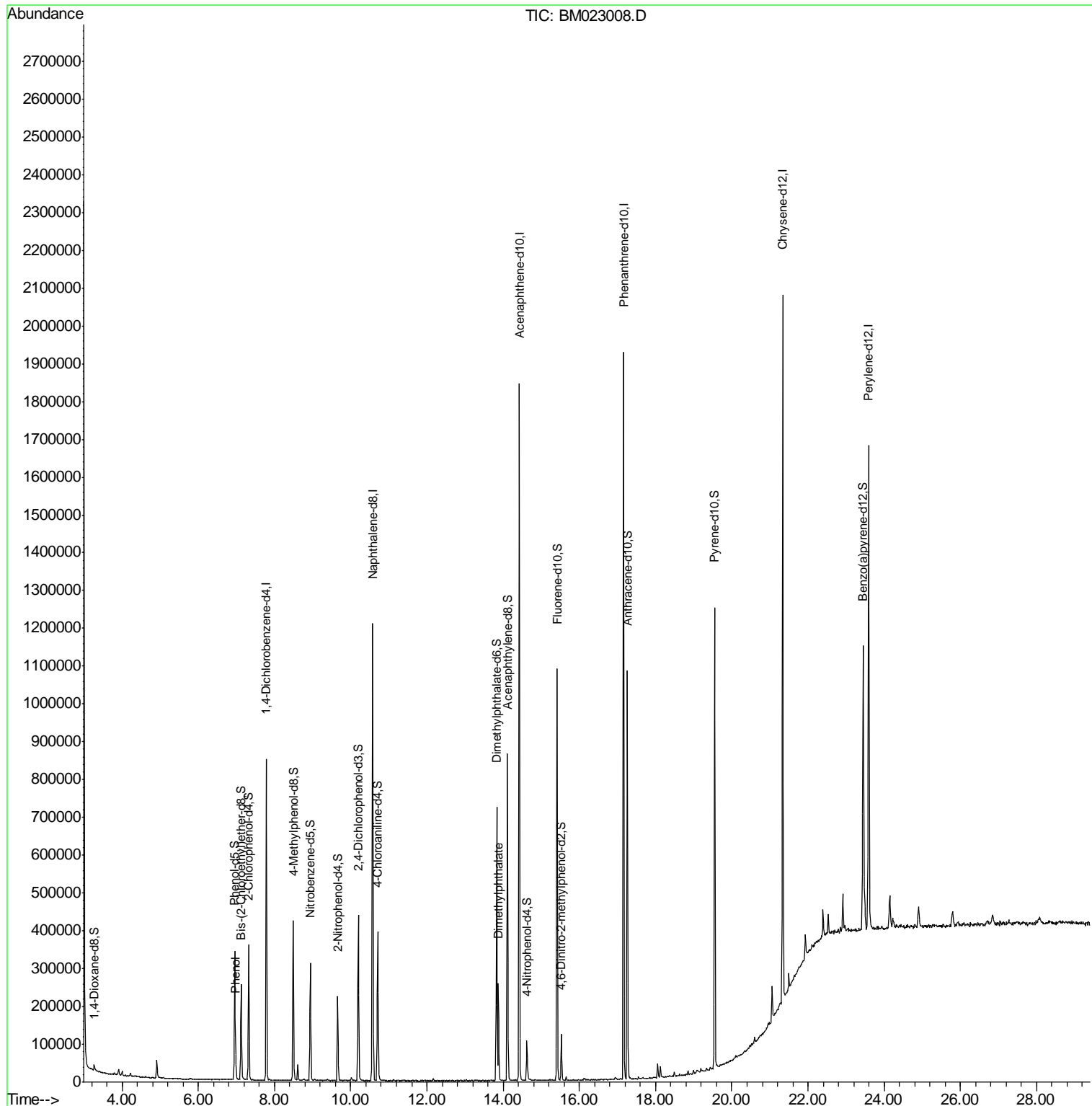
Target Compounds	R.T.	QIon	Response	Conc	Units	Ovalue
6) Phenol	6.98	94	35446	1.678	ng/ul	97
45) Dimethylphthalate	13.88	163	173263	3.575	ng/ul	99

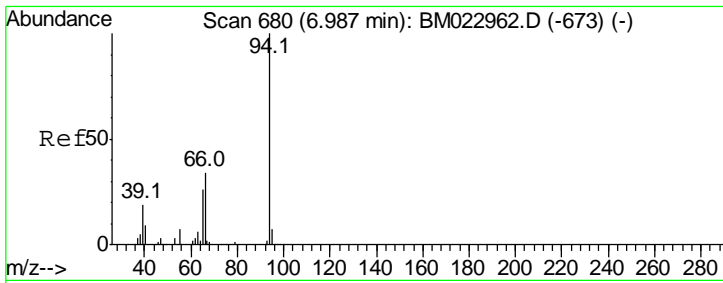
(#) = qualifier out of range (m) = manual integration (+) = signals summed

Data Path : Z:\SVOASRV\HPCHEM1\BNA M\DATA\BM100319\  
 Data File : BM023008.D  
 Acq On : 06 Oct 2019 02:17  
 Operator : JU  
 Sample : K5057-04  
 Misc :  
 ALS Vial : 25 Sample Multiplier: 1

Instrument :  
 BNA\_M  
 ClientSampleId :  
 DBAH7

Quant Time: Oct 06 23:36:27 2019  
 Quant Method : Z:\SVOASRV\HPCHEM1\BNA\_M\METHODS\SOM-EPA-BM092719MA.M  
 Quant Title : SVOA CALIBRATION  
 QLast Update : Fri Oct 04 16:45:59 2019  
 Response via : Initial Calibration

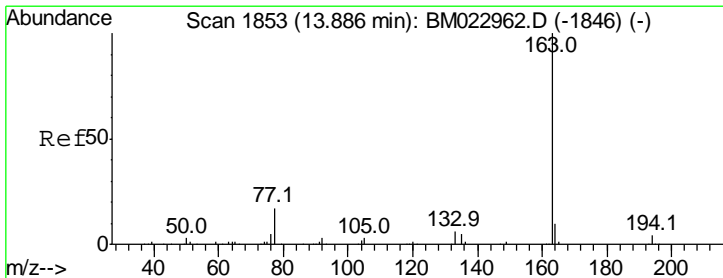
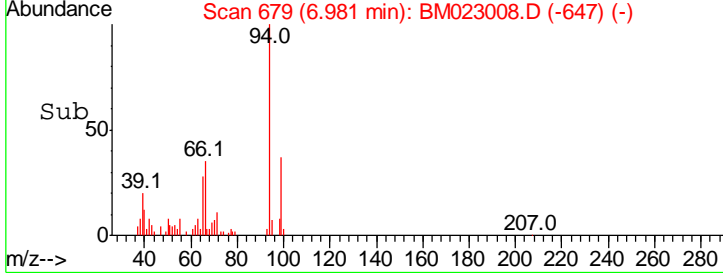
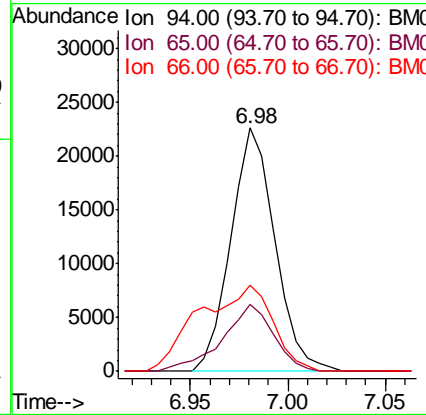
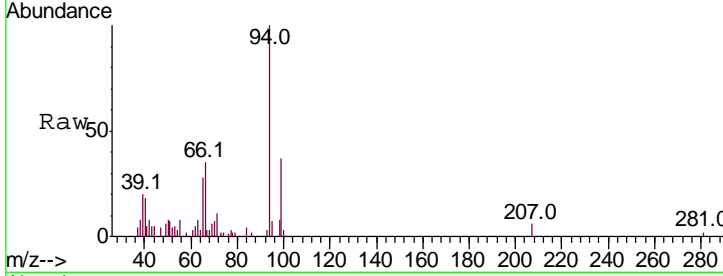




#6  
 Phenol  
 Concen: 1.678 ng/ul  
 RT: 6.98 min Scan# 679  
 Delta R.T. -0.01 min  
 Lab File: BM023008.D  
 Acq: 06 Oct 2019 02:17

Instrument :  
 BNA\_M  
 ClientSampleId :  
 DBAH7

Tgt Ion	Resp	Lower	Upper
94	100		
65	27.6	20.9	31.3
66	35.3	27.2	40.8



#45  
 Dimethylphthalate  
 Concen: 3.575 ng/ul  
 RT: 13.88 min Scan# 1852  
 Delta R.T. -0.01 min  
 Lab File: BM023008.D  
 Acq: 06 Oct 2019 02:17

Tgt Ion	Resp	Lower	Upper
163	100		
194	3.9	3.4	5.0
164	9.7	8.1	12.1

