

Data Path : Z:\SVOASRV\HPCHEM1\BNA M\DATA\BM100319\
 Data File : BM023019.D
 Acq On : 06 Oct 2019 10:05
 Operator : JU
 Sample : K5057-13MS
 Misc :
 ALS Vial : 36 Sample Multiplier: 1

Instrument :
 BNA_M
 ClientSampleId :
 DBAK2MS

Quant Time: Oct 06 23:37:44 2019
 Quant Method : Z:\SVOASRV\HPCHEM1\BNA_M\METHODS\SOM-EPA-BM092719MA.M
 Quant Title : SVOA CALIBRATION
 QLast Update : Fri Oct 04 16:45:59 2019
 Response via : Initial Calibration

Internal Standards	R.T.	QIon	Response	Conc	Units	Dev(Min)
1) 1,4-Dichlorobenzene-d4	7.79	152	240743	20.00	ng/ul	0.00
18) Naphthalene-d8	10.57	136	1084163	20.00	ng/ul	-0.01
36) Acenaphthene-d10	14.42	164	701187	20.00	ng/ul	0.00
62) Phenanthrene-d10	17.16	188	1473741	20.00	ng/ul	0.00
78) Chrysene-d12	21.34	240	1270745	20.00	ng/ul	-0.01
86) Perylene-d12	23.60	264	1169108	20.00	ng/ul	-0.01

System Monitoring Compounds

3) 1,4-Dioxane-d8	3.26	96	17458	3.14	ng/uL	0.00
5) Phenol-d5	6.95	99	331689	15.59	ng/ul	-0.01
7) Bis-(2-Chloroethyl)ether-d	7.12	67	191650	16.46	ng/ul	-0.01
9) 2-Chlorophenol-d4	7.32	132	280415	16.37	ng/ul	-0.01
13) 4-Methylphenol-d8	8.49	113	283676	16.29	ng/ul	-0.01
19) Nitrobenzene-d5	8.94	128	139049	16.62	ng/ul	0.00
22) 2-Nitrophenol-d4	9.66	143	147521	16.15	ng/ul	-0.01
26) 2,4-Dichlorophenol-d3	10.20	165	294644	16.20	ng/ul	-0.01
29) 4-Chloroaniline-d4	10.71	131	415654	18.81	ng/ul	0.00
44) Dimethylphthalate-d6	13.83	166	940642	17.28	ng/ul	-0.01
47) Acenaphthylene-d8	14.11	160	1083199	17.24	ng/ul	-0.01
52) 4-Nitrophenol-d4	14.62	143	47501	4.42	ng/ul	-0.01
58) Fluorene-d10	15.42	176	807988	17.42	ng/ul	0.00
63) 4,6-Dinitro-2-methylphenol	15.53	200	39186	4.09	ng/ul	-0.01
71) Anthracene-d10	17.26	188	1293569	17.97	ng/ul	-0.01
79) Pyrene-d10	19.55	212	1443732	21.11	ng/ul	0.00
90) Benzo(a)pyrene-d12	23.45	264	1113509	18.41	ng/ul	-0.02

Target Compounds

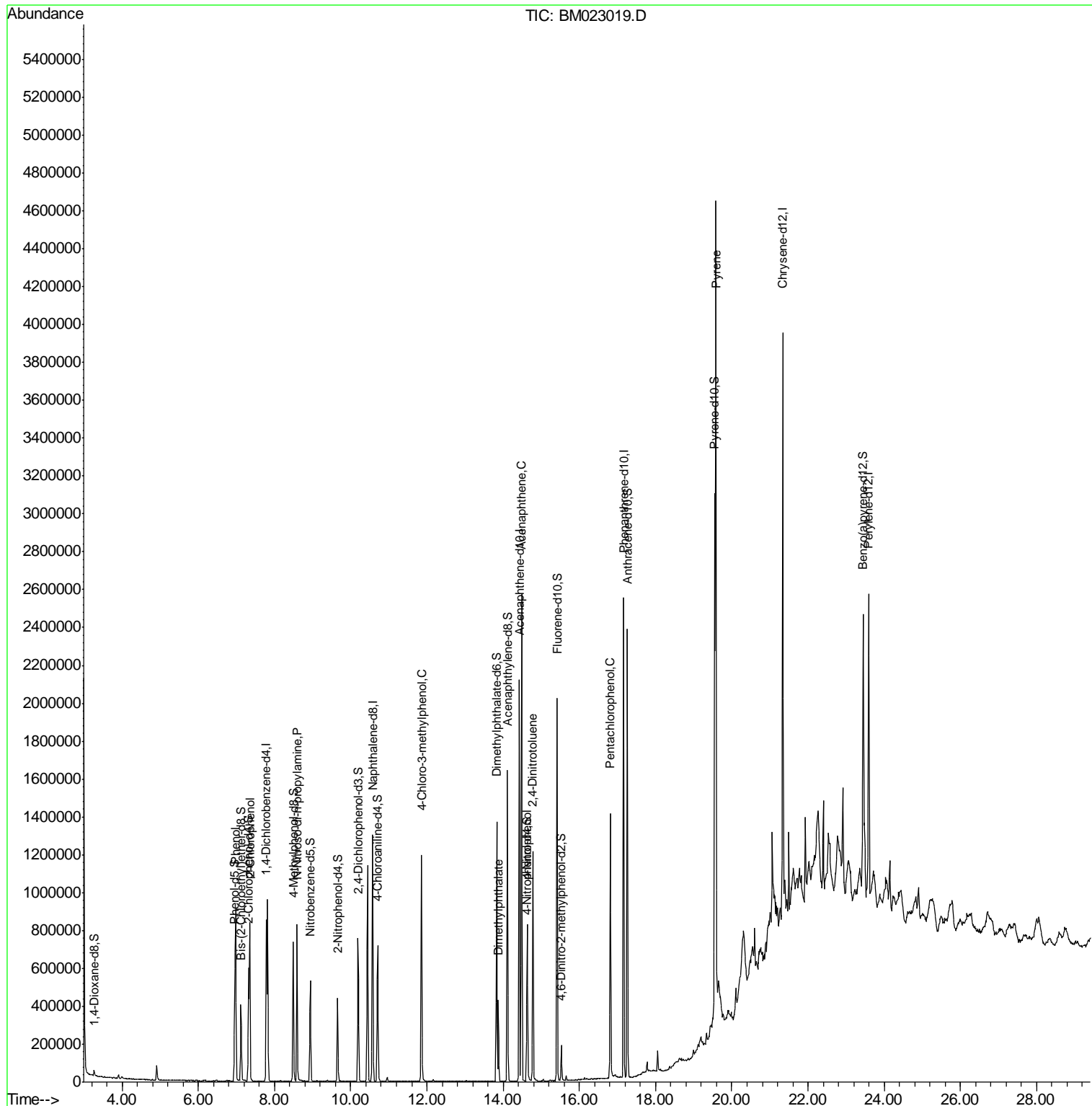
Target Compounds	R.T.	QIon	Response	Conc	Units	Ovalue
6) Phenol	6.98	94	518076	23.233	ng/ul	99
10) 2-Chlorophenol	7.35	128	381192	20.746	ng/ul	99
15) N-Nitroso-di-n-propylamine	8.59	70	302237	22.103	ng/ul	98
33) 4-Chloro-3-methylphenol	11.86	107	422175	22.271	ng/ul	99
45) Dimethylphthalate	13.87	163	274665	4.913	ng/ul	100
50) Acenaphthene	14.49	153	1039074	21.991	ng/ul	100
53) 4-Nitrophenol	14.63	109	139937	17.807	ng/ul	98
55) 2,4-Dinitrotoluene	14.78	165	355509	21.617	ng/ul	98
69) Pentachlorophenol	16.82	266	252691	19.650	ng/ul	99
80) Pyrene	19.58	202	2406373	26.714	ng/ul	97

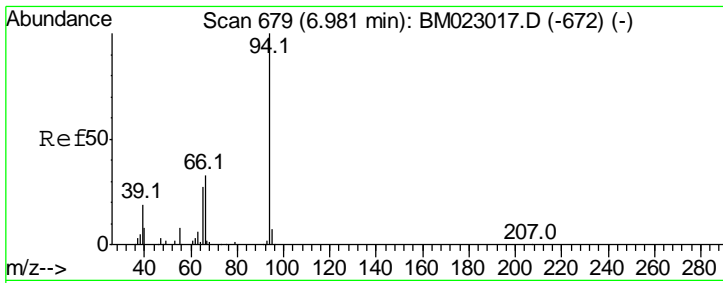
(#) = qualifier out of range (m) = manual integration (+) = signals summed

Data Path : Z:\SVOASRV\HPCHEM1\BNA M\DATA\BM100319\
 Data File : BM023019.D
 Acq On : 06 Oct 2019 10:05
 Operator : JU
 Sample : K5057-13MS
 Misc :
 ALS Vial : 36 Sample Multiplier: 1

Instrument :
 BNA_M
 ClientSampled :
 DBAK2MS

Quant Time: Oct 06 23:37:44 2019
 Quant Method : Z:\SVOASRV\HPCHEM1\BNA_M\METHODS\SOM-EPA-BM092719MA.M
 Quant Title : SVOA CALIBRATION
 QLast Update : Fri Oct 04 16:45:59 2019
 Response via : Initial Calibration

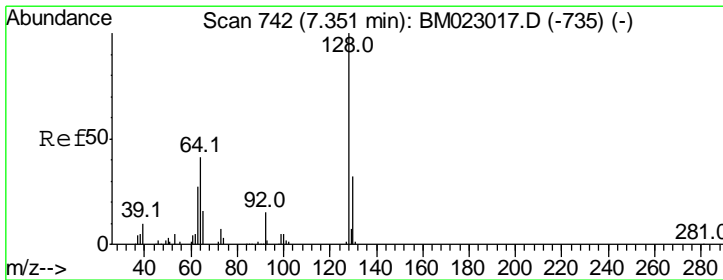
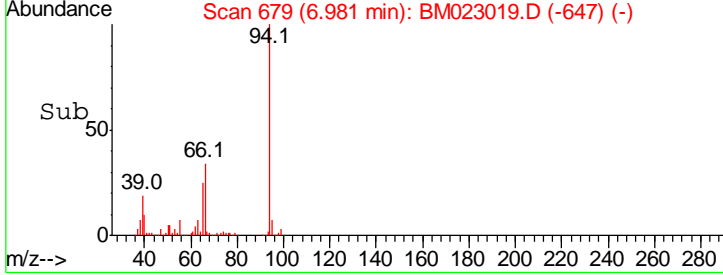
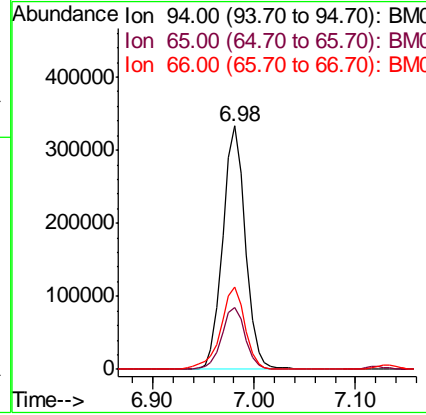
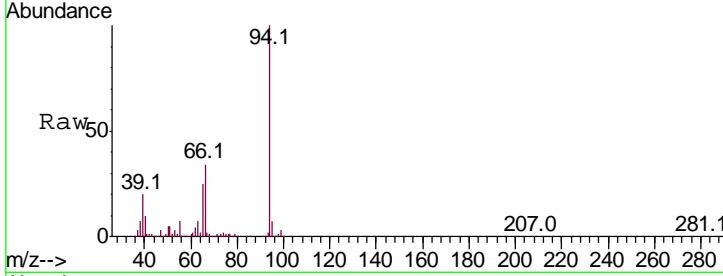




#6
 Phenol
 Concen: 23.233 ng/ul
 RT: 6.98 min Scan# 679
 Delta R.T. -0.01 min
 Lab File: BM023019.D
 Acq: 06 Oct 2019 10:05

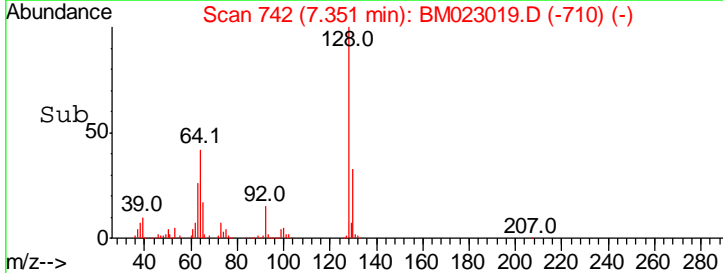
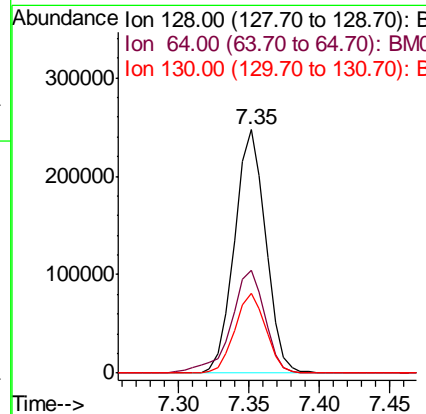
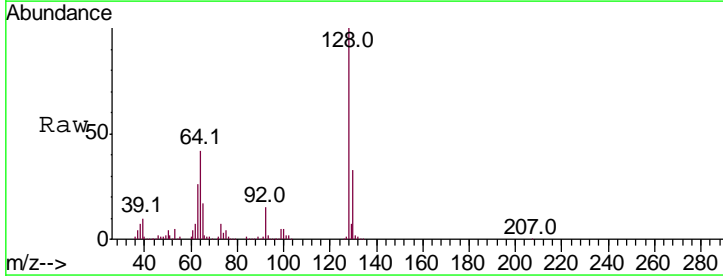
Instrument :
 BNA_M
 ClientSampled :
 DBAK2MS

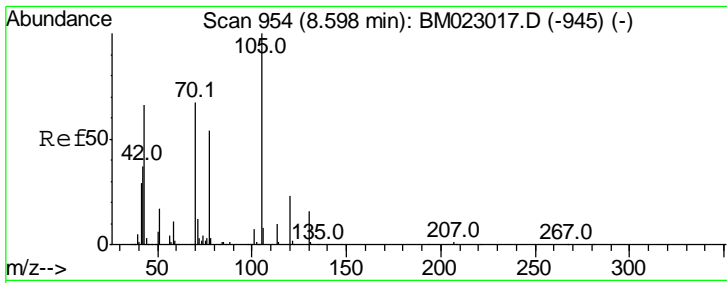
Tgt Ion	Resp	Lower	Upper
94	100		
65	25.4	20.9	31.3
66	34.0	27.2	40.8



#10
 2-Chlorophenol
 Concen: 20.746 ng/ul
 RT: 7.35 min Scan# 742
 Delta R.T. -0.01 min
 Lab File: BM023019.D
 Acq: 06 Oct 2019 10:05

Tgt Ion	Resp	Lower	Upper
128	100		
64	42.1	34.1	51.1
130	32.8	26.0	39.0

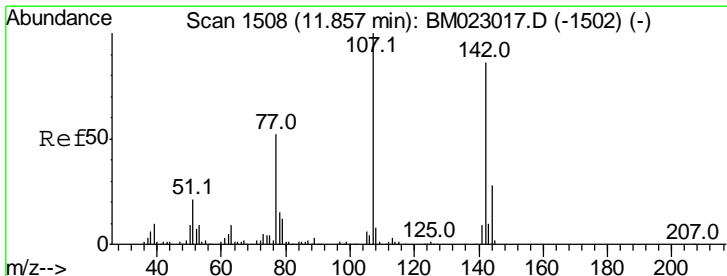
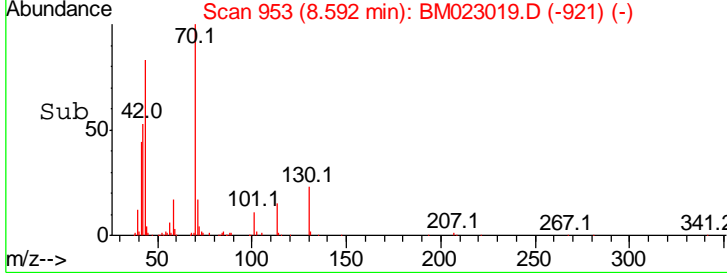
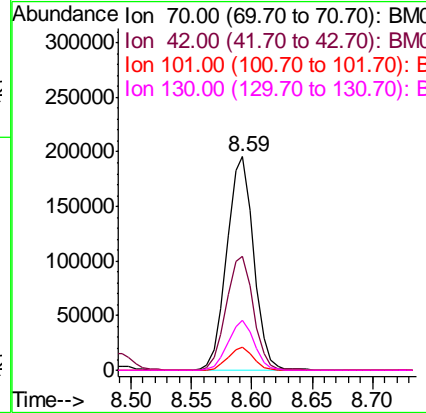
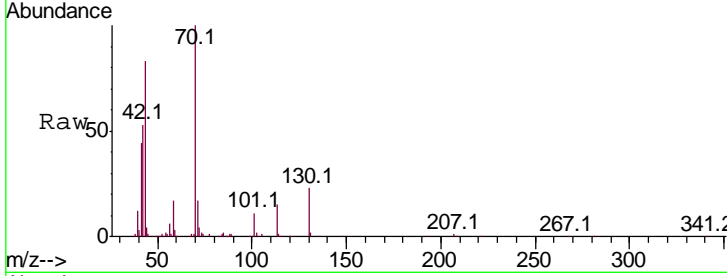




#15
 N-Nitroso-di-n-propylamine
 Concen: 22.103 ng/ul
 RT: 8.59 min Scan# 953
 Delta R.T. -0.01 min
 Lab File: BM023019.D
 Acq: 06 Oct 2019 10:05

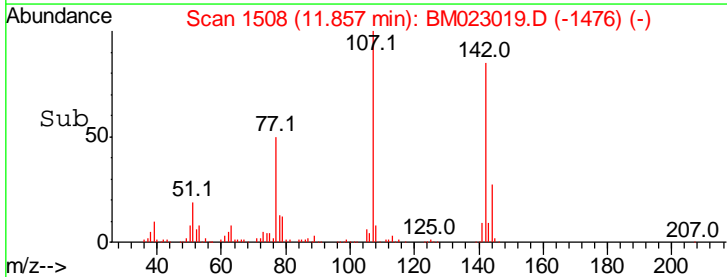
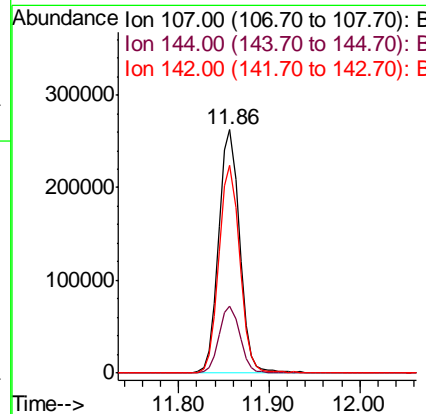
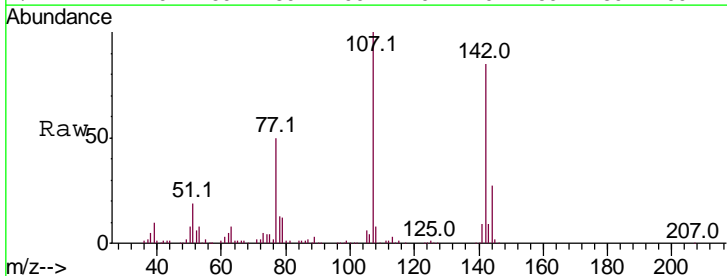
Instrument :
 BNA_M
ClientSampled :
 DBAK2MS

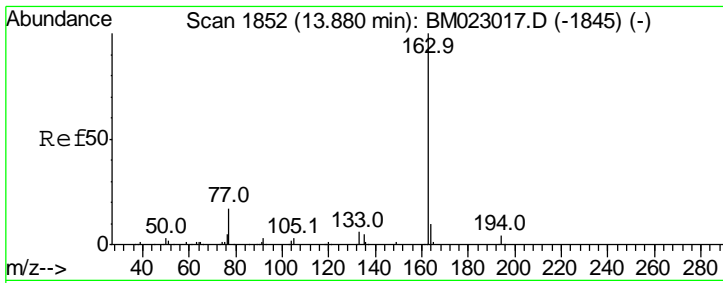
Tgt Ion	Resp	Lower	Upper
70	100		
42	53.3	44.6	66.8
101	10.5	8.2	12.2
130	23.4	18.7	28.1



#33
 4-Chloro-3-methylphenol
 Concen: 22.271 ng/ul
 RT: 11.86 min Scan# 1508
 Delta R.T. -0.01 min
 Lab File: BM023019.D
 Acq: 06 Oct 2019 10:05

Tgt Ion	Resp	Lower	Upper
107	100		
144	27.4	22.5	33.7
142	85.1	68.9	103.3

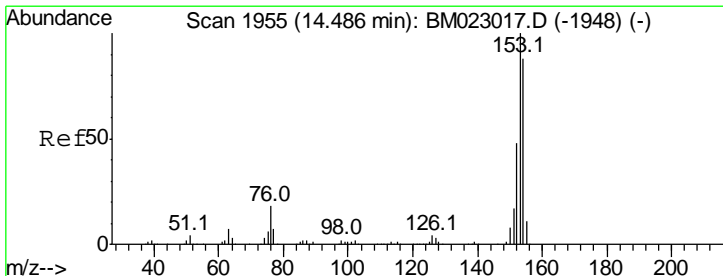
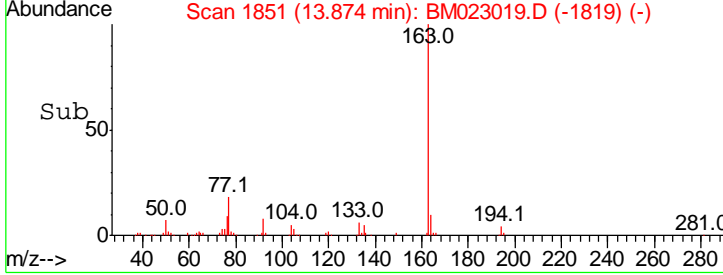
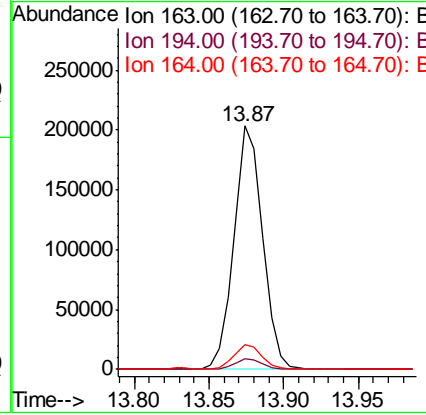
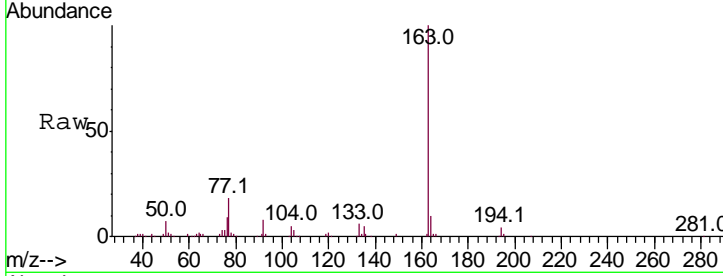




#45
 Dimethylphthalate
 Concen: 4.913 ng/ul
 RT: 13.87 min Scan# 1851
 Delta R.T. -0.01 min
 Lab File: BM023019.D
 Acq: 06 Oct 2019 10:05

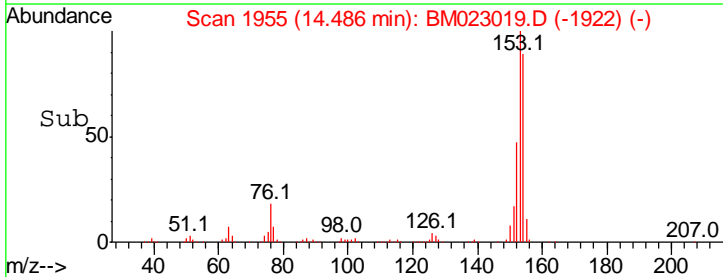
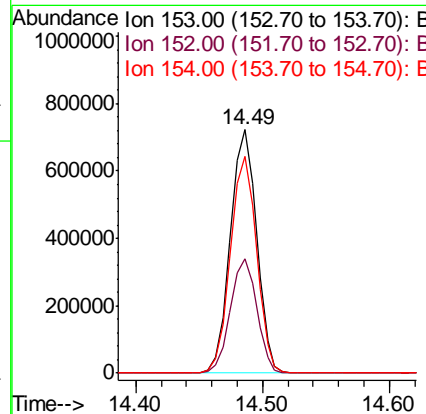
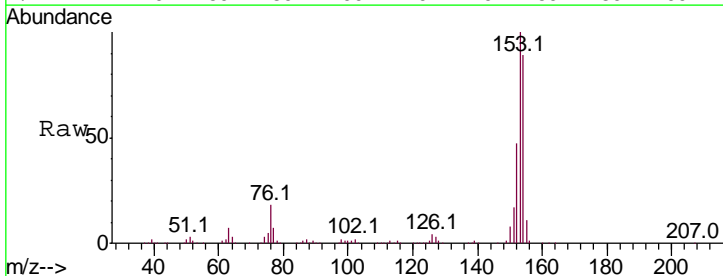
Instrument :
 BNA_M
 ClientSampled :
 DBAK2MS

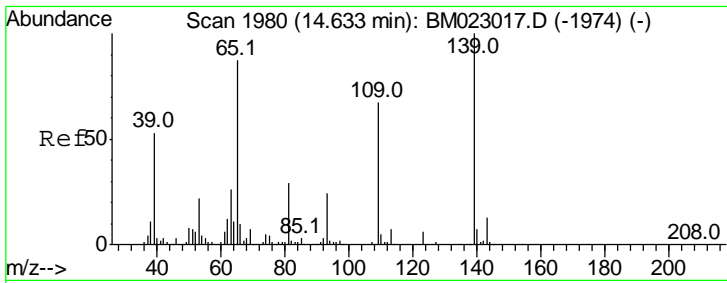
Tgt Ion	Resp	Lower	Upper
163	100		
194	4.2	3.4	5.0
164	10.2	8.1	12.1



#50
 Acenaphthene
 Concen: 21.991 ng/ul
 RT: 14.49 min Scan# 1955
 Delta R.T. -0.01 min
 Lab File: BM023019.D
 Acq: 06 Oct 2019 10:05

Tgt Ion	Resp	Lower	Upper
153	100		
152	47.2	38.1	57.1
154	89.1	71.1	106.7

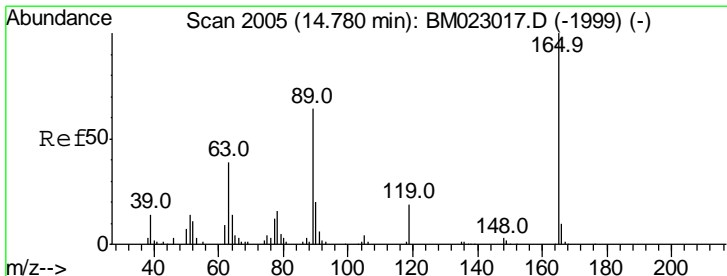
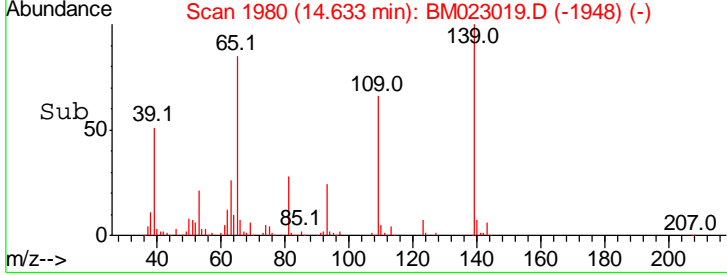
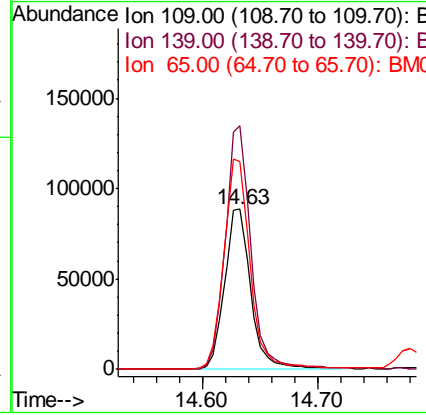
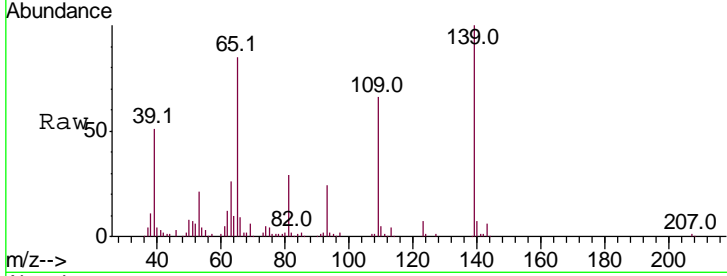




#53
 4-Nitrophenol
 Concen: 17.807 ng/ul
 RT: 14.63 min Scan# 1980
 Delta R.T. -0.01 min
 Lab File: BM023019.D
 Acq: 06 Oct 2019 10:05

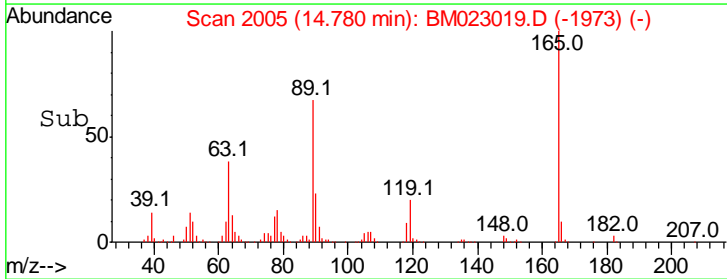
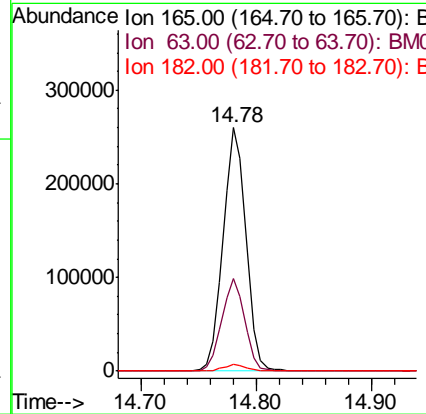
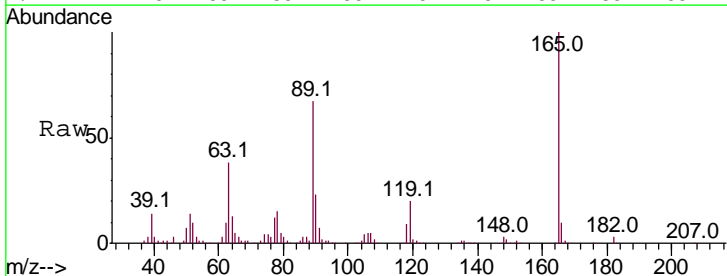
Instrument :
 BNA_M
ClientSampleID :
 DBAK2MS

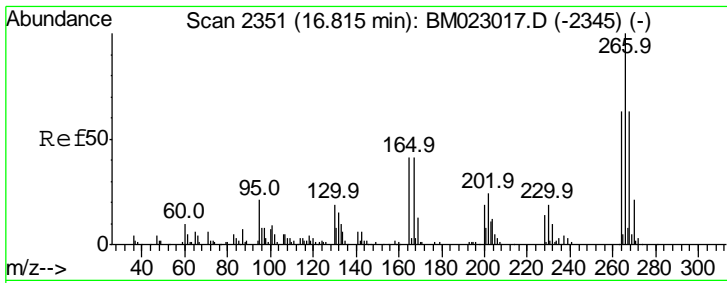
Tgt Ion	Resp	Lower	Upper
109	139937		
109	100		
139	152.2	119.5	179.3
65	129.6	105.0	157.4



#55
 2,4-Dinitrotoluene
 Concen: 21.617 ng/ul
 RT: 14.78 min Scan# 2005
 Delta R.T. -0.01 min
 Lab File: BM023019.D
 Acq: 06 Oct 2019 10:05

Tgt Ion	Resp	Lower	Upper
165	355509		
165	100		
63	38.2	29.8	44.6
182	3.0	2.2	3.4

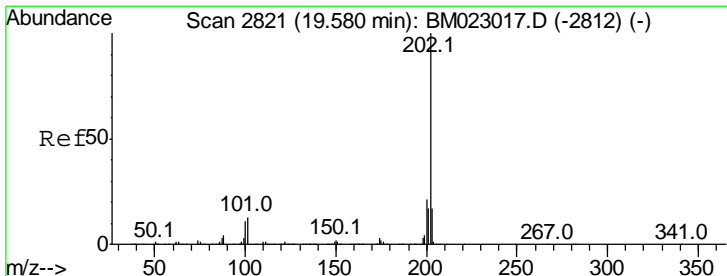
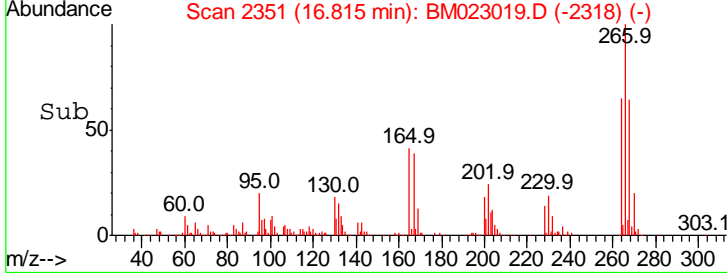
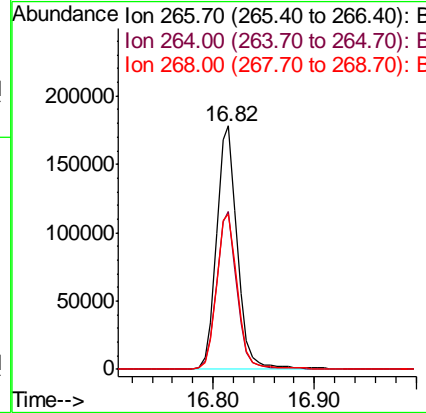
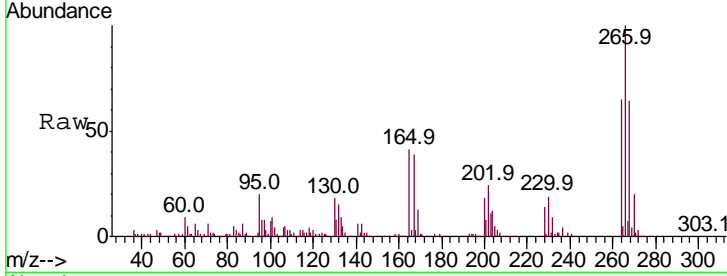




#69
 Pentachlorophenol
 Concen: 19.650 ng/ul
 RT: 16.82 min Scan# 2351
 Delta R.T. -0.01 min
 Lab File: BM023019.D
 Acq: 06 Oct 2019 10:05

Instrument :
 BNA_M
ClientSampled :
 DBAK2MS

Tgt Ion	Resp	Lower	Upper
266	100		
264	64.7	50.8	76.2
268	63.7	51.4	77.0



#80
 Pyrene
 Concen: 26.714 ng/ul
 RT: 19.58 min Scan# 2821
 Delta R.T. -0.01 min
 Lab File: BM023019.D
 Acq: 06 Oct 2019 10:05

Tgt Ion	Resp	Lower	Upper
202	100		
101	13.3	9.7	14.5
100	10.9	7.8	11.8

