

Data Path : Z:\SVOASRV\HPCHEM1\BNA M\DATA\BM100319\  
 Data File : BM023007.D  
 Acq On : 06 Oct 2019 01:41  
 Operator : JU  
 Sample : K5057-01  
 Misc :  
 ALS Vial : 24 Sample Multiplier: 1

Instrument :  
 BNA\_M  
 ClientSampled :  
 DBAH1

Integration Parameters: LSCINT.P

Integrator: RTE  
 Smoothing : OFF  
 Sampling : 1  
 Start Thrs: 0.2  
 Stop Thrs : 0

Filtering: 5  
 Min Area: 0.1 % of largest Peak  
 Max Peaks: 100  
 Peak Location: TOP

If leading or trailing edge < 100 prefer < Baseline drop else tangent >  
 Peak separation: 5

Method : Z:\SVOASRV\HPCHEM1\BNA\_M\METHODS\SOM-EPA-BM092719MA.M  
 Title : SVOA CALIBRATION

Signal : TIC

peak #	R.T. min	first scan	max scan	last scan	PK TY	peak height	corr. area	corr. % max.	% of total
1	3.269	45	48	55	rVB	27301	39781	1.59%	0.118%
2	3.781	131	135	144	rVB2	18464	29523	1.18%	0.087%
3	3.846	144	146	151	rVV3	3630	5652	0.23%	0.017%
4	3.910	152	157	162	rVB2	15751	26412	1.06%	0.078%
5	3.999	168	172	176	rVB	13397	17044	0.68%	0.050%
6	4.557	265	267	269	rVB4	3344	2789	0.11%	0.008%
7	4.910	323	327	336	rBV	72412	114316	4.58%	0.339%
8	6.175	540	542	548	rVB4	2470	3314	0.13%	0.010%
9	6.469	589	592	596	rBV3	3255	4387	0.18%	0.013%
10	6.957	668	675	689	rVB	508868	901193	36.09%	2.669%
11	7.122	697	703	727	rBV	376572	640164	25.64%	1.896%
12	7.322	730	737	748	rVB	539606	846488	33.90%	2.507%
13	7.422	748	754	757	rVB5	3907	5184	0.21%	0.015%
14	7.787	808	816	825	rBV	899884	1396191	55.91%	4.135%
15	7.857	825	828	832	rVB3	3022	4675	0.19%	0.014%
16	8.022	853	856	862	rBV5	2709	3747	0.15%	0.011%
17	8.492	929	936	948	rBV	565142	913947	36.60%	2.707%
18	8.610	952	956	963	rVB	11886	21242	0.85%	0.063%
19	8.787	982	986	992	rVB5	1863	3962	0.16%	0.012%
20	8.939	1004	1012	1022	rBV	469976	767806	30.75%	2.274%
21	9.110	1036	1041	1045	rVB4	3555	4359	0.17%	0.013%
22	9.381	1083	1087	1092	rVB2	3871	5327	0.21%	0.016%
23	9.657	1127	1134	1144	rBV	347484	574885	23.02%	1.702%
24	10.198	1218	1226	1243	rBV	616318	1008182	40.38%	2.986%
25	10.575	1282	1290	1302	rVB	1244345	2035655	81.52%	6.028%
26	10.710	1305	1313	1327	rBV	532033	933185	37.37%	2.764%
27	11.375	1421	1426	1431	rBV6	2391	4703	0.19%	0.014%
28	12.169	1557	1561	1569	rVB	8436	13836	0.55%	0.041%
29	12.780	1662	1665	1672	rVB2	3200	4766	0.19%	0.014%
30	13.039	1705	1709	1712	rBV4	4667	5873	0.24%	0.017%
31	13.257	1739	1746	1754	rVB2	10739	15937	0.64%	0.047%
32	13.322	1754	1757	1759	rBV2	3109	3749	0.15%	0.011%
33	13.474	1778	1783	1789	rBV	43003	58411	2.34%	0.173%
34	13.704	1817	1822	1829	rBV3	3325	5059	0.20%	0.015%

Data Path : Z:\SVOASRV\HPCHEM1\BNA M\DATA\BM100319\  
 Data File : BM023007.D  
 Acq On : 06 Oct 2019 01:41  
 Operator : JU  
 Sample : K5057-01  
 Misc :  
 ALS Vial : 24 Sample Multiplier: 1

Instrument :  
 BNA\_M  
 ClientSampleId :  
 DBAH1

## Integration Parameters: LSCINT.P

Integrator: RTE  
 Smoothing : OFF  
 Sampling : 1  
 Start Thrs: 0.2  
 Stop Thrs : 0

Filtering: 5  
 Min Area: 0.1 % of largest Peak  
 Max Peaks: 100  
 Peak Location: TOP

If leading or trailing edge < 100 prefer < Baseline drop else tangent >  
 Peak separation: 5

Method : Z:\SVOASRV\HPCHEM1\BNA\_M\METHODS\SOM-EPA-BM092719MA.M  
 Title : SVOA CALIBRATION

35	13.833	1837	1844	1848	rBV	956375	1374274	55.04%	4.070%
36	13.874	1848	1851	1862	rVV	369791	524844	21.02%	1.554%
37	13.957	1863	1865	1870	rVB3	2565	3578	0.14%	0.011%
38	14.116	1881	1892	1903	rBV	1171512	1716028	68.72%	5.082%
39	14.263	1912	1917	1920	rVB5	3011	4652	0.19%	0.014%
40	14.333	1924	1929	1933	rVB3	4412	5881	0.24%	0.017%
41	14.421	1937	1944	1955	rVV	1676947	2497015	100.00%	7.395%
42	14.616	1971	1977	1993	rBV	202090	368508	14.76%	1.091%
43	14.745	1995	1999	2002	rVV5	3445	6934	0.28%	0.021%
44	14.780	2003	2005	2010	rVV4	3749	5306	0.21%	0.016%
45	14.839	2010	2015	2021	rVV2	22640	32106	1.29%	0.095%
46	15.145	2065	2067	2071	rVB2	1857	2964	0.12%	0.009%
47	15.221	2076	2080	2087	rBV4	6457	13998	0.56%	0.041%
48	15.280	2087	2090	2094	rVB2	3929	4412	0.18%	0.013%
49	15.416	2106	2113	2126	rBV	1378069	2049523	82.08%	6.069%
50	15.527	2126	2132	2142	rBV	215630	300549	12.04%	0.890%
51	15.651	2147	2153	2158	rVV	13457	23461	0.94%	0.069%
52	15.686	2158	2159	2165	rVV5	3193	5117	0.20%	0.015%
53	15.739	2165	2168	2171	rVV4	2762	3834	0.15%	0.011%
54	15.780	2171	2175	2179	rVV4	3304	4894	0.20%	0.014%
55	15.845	2181	2186	2188	rVB4	2408	4249	0.17%	0.013%
56	15.957	2202	2205	2208	rBV	1748	2671	0.11%	0.008%
57	16.110	2225	2231	2235	rBV	11845	16246	0.65%	0.048%
58	16.139	2235	2236	2239	rVV2	5554	5944	0.24%	0.018%
59	16.163	2239	2240	2243	rVV3	5999	5277	0.21%	0.016%
60	16.198	2243	2246	2249	rVV3	5193	6406	0.26%	0.019%
61	16.257	2252	2256	2260	rBV4	3214	5310	0.21%	0.016%
62	16.310	2263	2265	2273	rVV5	4940	7501	0.30%	0.022%
63	16.380	2273	2277	2278	rVV3	2970	3717	0.15%	0.011%
64	16.415	2280	2283	2286	rVB5	3779	4123	0.17%	0.012%
65	16.521	2298	2301	2304	rBV5	2278	3393	0.14%	0.010%
66	16.568	2304	2309	2313	rBV5	6069	9768	0.39%	0.029%
67	16.704	2330	2332	2336	rVB3	4146	4523	0.18%	0.013%
68	16.933	2365	2371	2378	rBV5	7087	23540	0.94%	0.070%
69	17.162	2403	2410	2420	rBV	1717458	2391023	95.76%	7.081%
70	17.257	2420	2426	2435	rBV	1371051	1946288	77.94%	5.764%
71	17.439	2454	2457	2458	rBV3	3373	4164	0.17%	0.012%

Data Path : Z:\SVOASRV\HPCHEM1\BNA M\DATA\BM100319\  
 Data File : BM023007.D  
 Acq On : 06 Oct 2019 01:41  
 Operator : JU  
 Sample : K5057-01  
 Misc :  
 ALS Vial : 24 Sample Multiplier: 1

Instrument :  
 BNA\_M  
 ClientSampleId :  
 DBAH1

## Integration Parameters: LSCINT.P

Integrator: RTE  
 Smoothing : OFF Filtering: 5  
 Sampling : 1 Min Area: 0.1 % of largest Peak  
 Start Thrs: 0.2 Max Peaks: 100  
 Stop Thrs : 0 Peak Location: TOP

If leading or trailing edge < 100 prefer < Baseline drop else tangent >  
 Peak separation: 5

Method : Z:\SVOASRV\HPCHEM1\BNA\_M\METHODS\SOM-EPA-BM092719MA.M  
 Title : SVOA CALIBRATION

72	17.551	2472	2476	2481	rVB6	10519	12905	0.52%	0.038%
73	17.668	2491	2496	2499	rBV7	4002	7151	0.29%	0.021%
74	17.933	2534	2541	2547	rBV10	5738	16194	0.65%	0.048%
75	18.057	2557	2562	2570	rBV	101252	140287	5.62%	0.415%
76	18.492	2632	2636	2640	rBV5	13042	14537	0.58%	0.043%
77	18.609	2654	2656	2658	rBV2	3809	2573	0.10%	0.008%
78	19.186	2751	2754	2757	rBV	14629	18967	0.76%	0.056%
79	19.221	2757	2760	2763	rVB2	12125	14435	0.58%	0.043%
80	19.339	2776	2780	2783	rBV3	24693	31261	1.25%	0.093%
81	19.439	2795	2797	2801	rVB	10472	10916	0.44%	0.032%
82	19.551	2810	2816	2824	rBV	1670080	2204937	88.30%	6.530%
83	21.056	3068	3072	3080	rBV2	173878	270590	10.84%	0.801%
84	21.339	3115	3120	3131	rBV	1858944	2337795	93.62%	6.923%
85	23.450	3473	3479	3495	rVB	1185731	2391252	95.76%	7.081%
86	23.591	3497	3503	3514	rVB	1315090	2480219	99.33%	7.345%

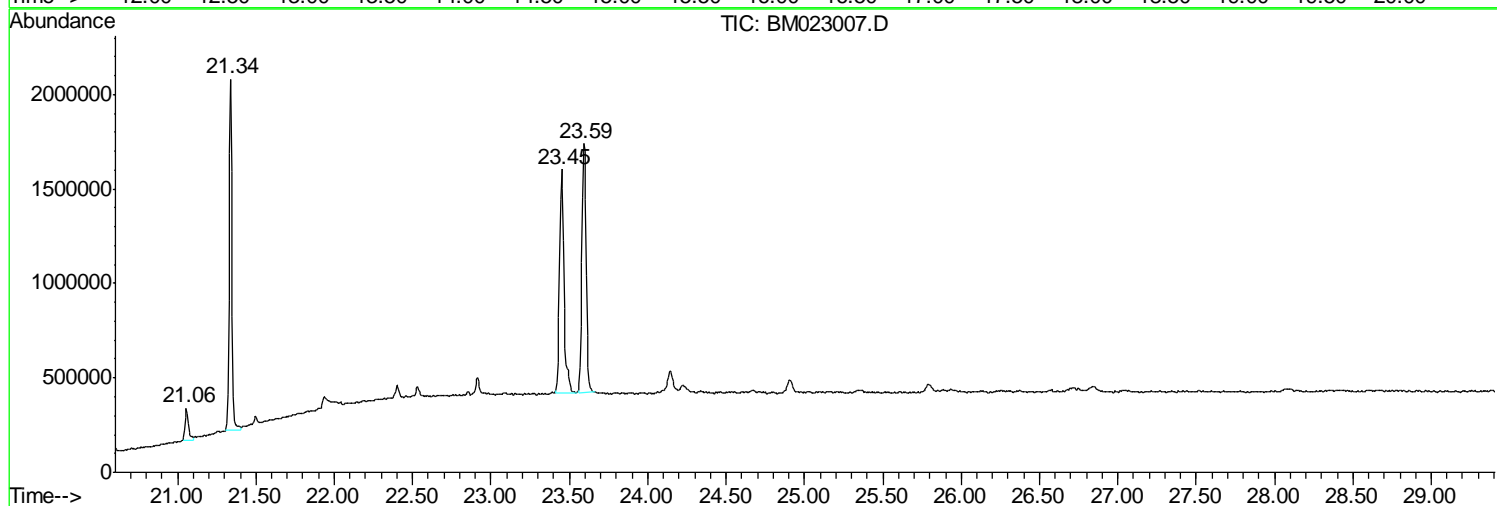
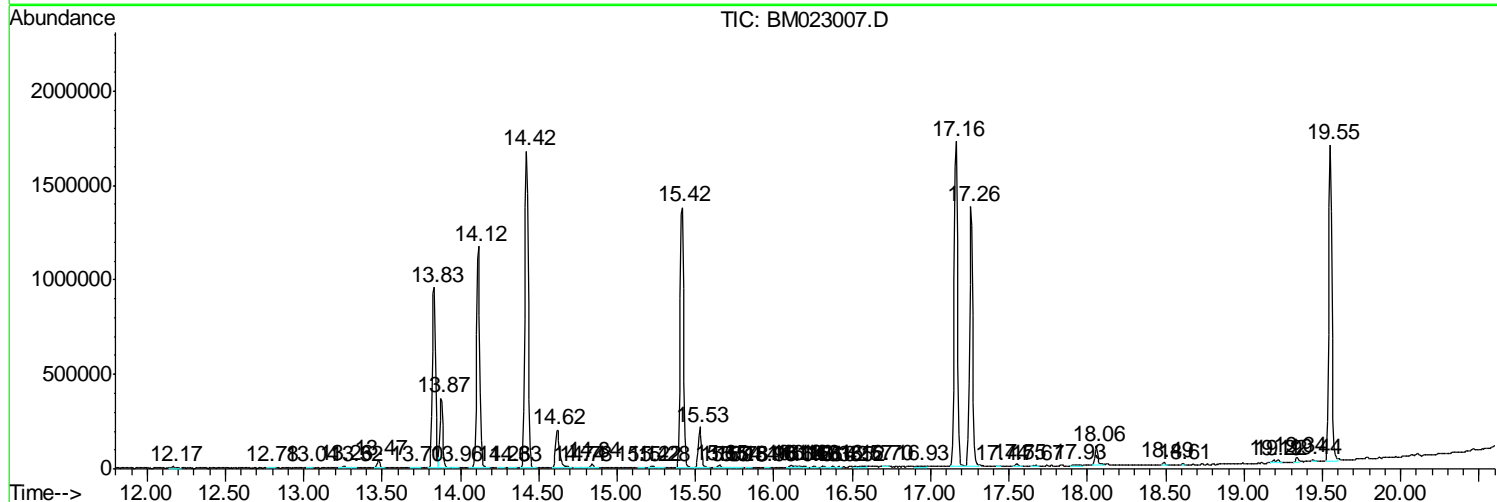
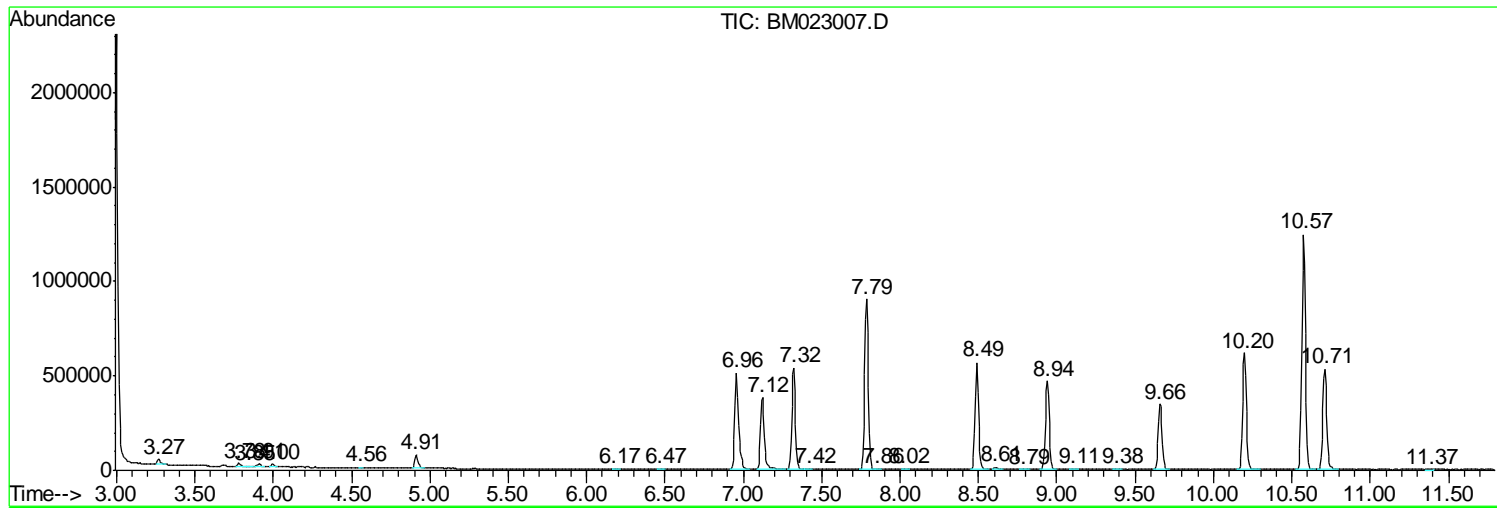
Sum of corrected areas: 33767784

Data Path : Z:\SVOASRV\HPCHEM1\BNA M\DATA\BM100319\  
 Data File : BM023007.D  
 Acq On : 06 Oct 2019 01:41  
 Operator : JU  
 Sample : K5057-01  
 Misc :  
 ALS Vial : 24 Sample Multiplier: 1

**Instrument :**  
 BNA\_M  
**Client Sampled :**  
 DBAH1

Quant Method : Z:\SVOASRV\HPCHEM1\BNA\_M\METHODS\SOM-EPA-BM092719MA.M  
 Quant Title : SVOA CALIBRATION

TIC Library : C:\DATABASE\NIST02.L  
 TIC Integration Parameters: LSCINT.P



Data Path : Z:\SVOASRV\HPCHEM1\BNA M\DATA\BM100319\  
 Data File : BM023007.D  
 Acq On : 06 Oct 2019 01:41  
 Operator : JU  
 Sample : K5057-01  
 Misc :  
 ALS Vial : 24 Sample Multiplier: 1

Instrument :  
 BNA\_M  
 ClientSampleID :  
 DBAH1

Quant Method : Z:\SVOASRV\HPCHEM1\BNA\_M\METHODS\SOM-EPA-BM092719MA.M  
 Quant Title : SVOA CALIBRATION

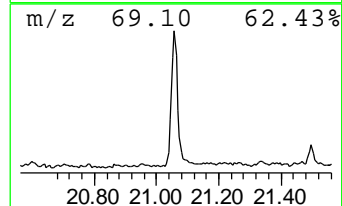
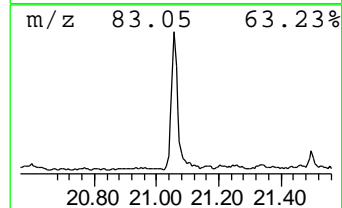
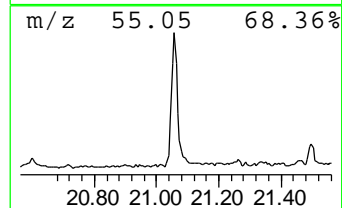
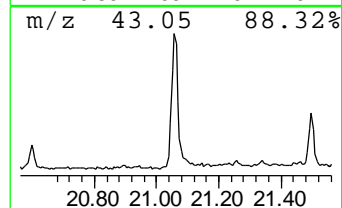
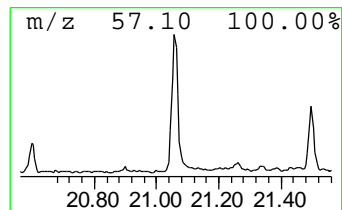
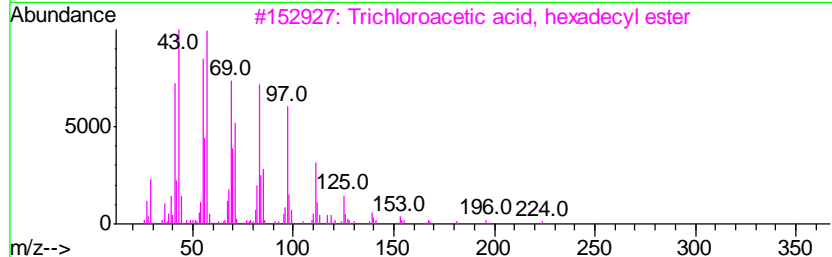
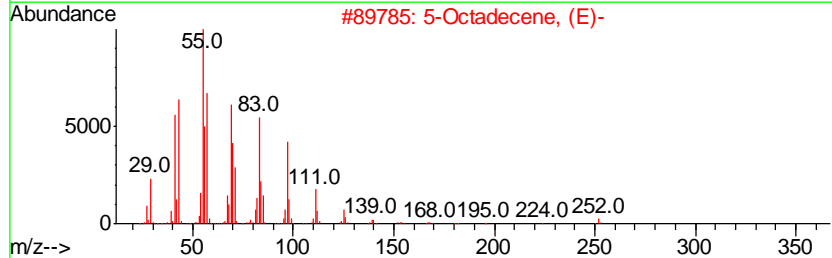
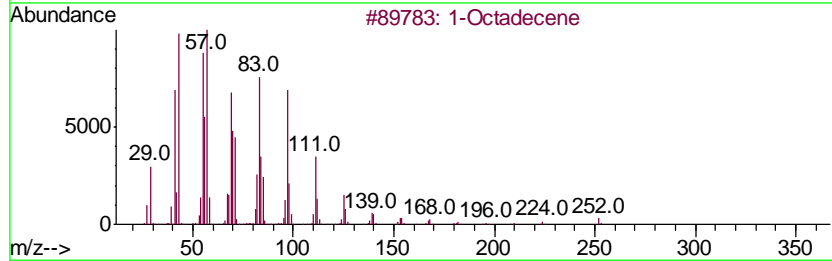
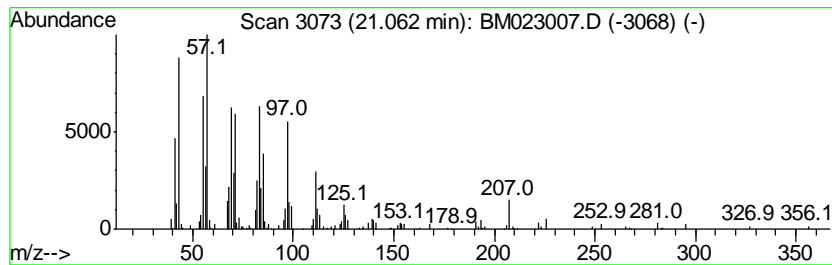
TIC Library : C:\DATABASE\NIST02.L  
 TIC Integration Parameters: LSCINT.P

\*\*\*\*\*  
 Peak Number 1 (DEL) Alkane: Cyclic21.06 Concentration Rank 1

R.T.	EstConc	Area	Relative to ISTD	R.T.
21.06	2.31 ng/ul	270590	Chrysene-d12	21.34

Hit#	of	Tentative ID	MW	MolForm	CAS#	Qual
1	5	1-Octadecene	252	C18H36	000112-88-9	96
2		5-Octadecene, (E)-	252	C18H36	007206-21-5	94
3		Trichloroacetic acid, hexadecyl ...	386	C18H33Cl3O2	074339-54-1	94
4		Heptafluorobutanoic acid, heptad...	452	C21H35F7O2	1000282-97-3	94
5		1,2-Octadecanediol	286	C18H38O2	020294-76-2	93



Data Path : Z:\SVOASRV\HPCHEM1\BNA\_M\DATA\BM100319\  
Data File : BM023007.D  
Acq On : 06 Oct 2019 01:41  
Operator : JU  
Sample : K5057-01  
Misc :  
ALS Vial : 24 Sample Multiplier: 1

Instrument :  
BNA\_M  
ClientSampleId :  
DBAH1

Quant Method : Z:\SVOASRV\HPCHEM1\BNA\_M\METHODS\SOM-EPA-BM092719MA.M  
Quant Title : SVOA CALIBRATION

TIC Library : C:\DATABASE\NIST02.L  
TIC Integration Parameters: LSCINT.P

TIC Top Hit name	RT	EstConc	Units	Response	--Internal Standard--			
					#	RT	Resp	Conc
(DEL) Alkane: Cyc...	21.06	2.3	ng/ul	270590	5	21.34	2337800	20.0