

Data Path : Z:\SVOASRV\HPCHEM1\BNA M\DATA\BM100818\
 Data File : BM017092.D
 Acq On : 09 Oct 2018 07:29
 Operator : MJ/SJ
 Sample : SSTDCCC020EC
 Misc :
 ALS Vial : 2 Sample Multiplier: 1

Instrument :
 BNA_M
 ClientSampleId :

Quant Time: Oct 09 08:13:56 2018
 Quant Method : Z:\SVOASRV\HPCHEM1\BNA_M\METHODS\SOM-EPA-BM100418MA.M
 Quant Title : SVOA CALIBRATION
 QLast Update : Tue Oct 09 08:11:45 2018
 Response via : Initial Calibration

Internal Standards	R.T.	QIon	Response	Conc	Units	Dev(Min)
1) 1,4-Dichlorobenzene-d4	7.69	152	198097	20.00	ng/ul	0.00
18) Naphthalene-d8	10.47	136	883054	20.00	ng/ul	0.00
36) Acenaphthene-d10	14.33	164	494546	20.00	ng/ul	0.00
62) Phenanthrene-d10	17.08	188	1116589	20.00	ng/ul	0.00
78) Chrysene-d12	21.27	240	1288808	20.00	ng/ul	0.00
86) Perylene-d12	23.49	264	1328181	20.00	ng/ul	0.00

System Monitoring Compounds

3) 1,4-Dioxane-d8	3.25	96	28039	7.04	ng/uL	0.00
5) Phenol-d5	6.87	99	307275	18.55	ng/ul	0.00
7) Bis-(2-Chloroethyl)ether-d	7.03	67	188960	18.82	ng/ul	0.00
9) 2-Chlorophenol-d4	7.23	132	263318	19.12	ng/ul	0.00
13) 4-Methylphenol-d8	8.40	113	240769	18.56	ng/ul	0.00
19) Nitrobenzene-d5	8.85	128	121066	18.76	ng/ul	0.00
22) 2-Nitrophenol-d4	9.56	143	111334	16.96	ng/ul	0.00
26) 2,4-Dichlorophenol-d3	10.09	165	264466	19.58	ng/ul	0.00
29) 4-Chloroaniline-d4	10.61	131	328884	20.26	ng/ul	0.00
44) Dimethylphthalate-d6	13.75	166	755577	19.26	ng/ul	0.00
47) Acenaphthylene-d8	14.02	160	1010488	20.15	ng/ul	0.00
52) 4-Nitrophenol-d4	14.54	143	126929	17.12	ng/ul	0.00
58) Fluorene-d10	15.33	176	714089	20.43	ng/ul	0.00
63) 4,6-Dinitro-2-methylphenol	15.45	200	100582	15.27	ng/ul	0.00
71) Anthracene-d10	17.17	188	1079489	20.24	ng/ul	0.00
79) Pyrene-d10	19.47	212	1156583	19.89	ng/ul	0.00
90) Benzo(a)pyrene-d12	23.34	264	1364615	20.07	ng/ul	0.00

Target Compounds

Target Compounds	R.T.	QIon	Response	Conc	Units	Ovalue
2) 1,4-Dioxane	3.28	88	30316	7.239	ng/uL	97
4) Benzaldehyde	6.85	77	207187	20.155	ng/ul	93
6) Phenol	6.89	94	310900	18.766	ng/ul	99
8) Bis(2-Chloroethyl)ether	7.13	93	244003	19.024	ng/ul	99
10) 2-Chlorophenol	7.26	128	265781	19.388	ng/ul	99
11) 2-Methylphenol	8.13	108	234305	18.783	ng/ul	98
12) 2,2'-oxybis(1-Chloropropan	8.22	45	361865	19.615	ng/ul	99
14) Acetophenone	8.51	105	416488	20.198	ng/ul	99
15) N-Nitroso-di-n-propylamine	8.50	70	178108	18.557	ng/ul	95
16) 4-Methylphenol	8.46	108	255940	19.150	ng/ul	98
17) Hexachloroethane	8.76	117	116261	20.760	ng/ul	99
20) Nitrobenzene	8.89	77	297519	19.502	ng/ul	98
21) Isophorone	9.41	82	523851	18.923	ng/ul	99
23) 2-Nitrophenol	9.59	139	132624	17.877	ng/ul	98
24) 2,4-Dimethylphenol	9.65	107	293507	19.504	ng/ul	100
25) Bis(2-Chloroethoxy)methane	9.89	93	337513	18.992	ng/ul	99
27) 2,4-Dichlorophenol	10.12	162	260206	19.826	ng/ul	99
28) Naphthalene	10.52	128	896206	19.753	ng/ul	99
30) 4-Chloroaniline	10.63	127	337041	20.488	ng/ul	100
31) Hexachlorobutadiene	10.80	225	185500	20.787	ng/ul	100
32) Caprolactam	11.41	113	64981	16.243	ng/ul	95
33) 4-Chloro-3-methylphenol	11.76	107	259725	19.261	ng/ul	99
34) 2-Methylnaphthalene	12.13	142	640150	19.979	ng/ul	98

Data Path : Z:\SVOASRV\HPCHEM1\BNA M\DATA\BM100818\
 Data File : BM017092.D
 Acq On : 09 Oct 2018 07:29
 Operator : MJ/SJ
 Sample : SSTDCCC020EC
 Misc :
 ALS Vial : 2 Sample Multiplier: 1

Instrument :
 BNA_M
 ClientSampleId :

Quant Time: Oct 09 08:13:56 2018
 Quant Method : Z:\SVOASRV\HPCHEM1\BNA_M\METHODS\SOM-EPA-BM100418MA.M
 Quant Title : SVOA CALIBRATION
 QLast Update : Tue Oct 09 08:11:45 2018
 Response via : Initial Calibration

Internal Standards	R.T.	QIon	Response	Conc	Units	Dev(Min)
35) 1-Methylnaphthalene	12.36	142	621633	19.927	ng/ul	98
37) 1,2,4,5-Tetrachlorobenzene	12.50	216	344339	20.277	ng/ul	97
38) Hexachlorocyclopentadiene	12.49	237	177722	16.321	ng/ul	96
39) 2,4,6-Trichlorophenol	12.75	196	198908	19.409	ng/ul	96
40) 2,4,5-Trichlorophenol	12.82	196	218518	19.864	ng/ul	99
41) 1,1'-Biphenyl	13.16	154	812622	19.931	ng/ul	100
42) 2-Chloronaphthalene	13.20	162	649279	20.215	ng/ul	100
43) 2-Nitroaniline	13.41	65	113981	16.262	ng/ul	95
45) Dimethylphthalate	13.79	163	765695	19.707	ng/ul	100
46) 2,6-Dinitrotoluene	13.92	165	119402	18.253	ng/ul	96
48) Acenaphthylene	14.05	152	967902	20.151	ng/ul	99
49) 3-Nitroaniline	14.25	138	127197	17.483	ng/ul	97
50) Acenaphthene	14.39	153	685131	20.072	ng/ul	99
51) 2,4-Dinitrophenol	14.45	184	57533	13.634	ng/ul	97
53) 4-Nitrophenol	14.55	109	100658	18.699	ng/ul	99
54) Dibenzofuran	14.73	168	985561	20.448	ng/ul	100
55) 2,4-Dinitrotoluene	14.70	165	211110	19.946	ng/ul	99
56) 2,3,4,6-Tetrachlorophenol	14.96	232	190978	19.350	ng/ul	97
57) Diethylphthalate	15.16	149	733145	19.293	ng/ul	99
59) Fluorene	15.38	166	799062	20.334	ng/ul	99
60) 4-Chlorophenyl-phenylether	15.38	204	420528	20.532	ng/ul	97
61) 4-Nitroaniline	15.41	138	145120	16.900	ng/ul	99
64) 4,6-Dinitro-2-methylphenol	15.46	198	110891	15.889	ng/ul#	92
65) N-Nitrosodiphenylamine	15.60	169	655067	19.802	ng/ul	99
66) 4-Bromophenyl-phenylether	16.27	248	249990	19.943	ng/ul	96
67) Hexachlorobenzene	16.39	284	283374	20.007	ng/ul	98
68) Atrazine	16.56	200	196777	17.109	ng/ul	98
69) Pentachlorophenol	16.73	266	151818	17.779	ng/ul	99
70) Phenanthrene	17.12	178	1260804	20.138	ng/ul	100
72) Anthracene	17.21	178	1285762	20.212	ng/ul	100
73) 1,2,3,4-Tetrachlorobenzene	13.12	216	358995	20.146	ng/uL	99
74) Pentachlorobenzene	14.65	250	340897	20.363	ng/uL	100
75) Carbazole	17.49	167	1078651	19.592	ng/ul	99
76) Di-n-butylphthalate	18.06	149	1113763	18.094	ng/ul	99
77) Fluoranthene	19.14	202	1423553	19.630	ng/ul	99
80) Pyrene	19.50	202	1513011	20.261	ng/ul	97
81) Butylbenzylphthalate	20.42	149	354369	13.753	ng/ul	97
82) 3,3'-Dichlorobenzidine	21.19	252	357097	15.597	ng/ul	98
83) Benzo(a)anthracene	21.25	228	1550412	20.053	ng/ul	100
84) Bis(2-ethylhexyl)phthalate	21.19	149	608086	15.227	ng/ul	99
85) Chrysene	21.30	228	1479713	19.789	ng/ul	99
87) Di-n-octyl phthalate	22.07	149	1046763	14.739	ng/ul	100
88) Benzo(b)fluoranthene	22.82	252	1595580	20.175	ng/ul	99
89) Benzo(k)fluoranthene	22.87	252	1549437	20.393	ng/ul	100
91) Benzo(a)pyrene	23.39	252	1553712	20.385	ng/ul	99
92) Indeno(1,2,3-cd)pyrene	25.71	276	1837794	20.424	ng/ul	100
93) Dibenzo(a,h)anthracene	25.72	278	1551034	20.706	ng/ul	99
94) Benzo(a,h,i)perylene	26.39	276	1516339	20.236	ng/ul	100

Data Path : Z:\SVOASRV\HPCHEM1\BNA M\DATA\BM100818\
 Data File : BM017092.D
 Acq On : 09 Oct 2018 07:29
 Operator : MJ/SJ
 Sample : SSTDCCC020EC
 Misc :
 ALS Vial : 2 Sample Multiplier: 1

Instrument :
 BNA_M
 ClientSampleId :

Quant Time: Oct 09 08:13:56 2018
 Quant Method : Z:\SVOASRV\HPCHEM1\BNA_M\METHODS\SOM-EPA-BM100418MA.M
 Quant Title : SVOA CALIBRATION
 QLast Update : Tue Oct 09 08:11:45 2018
 Response via : Initial Calibration

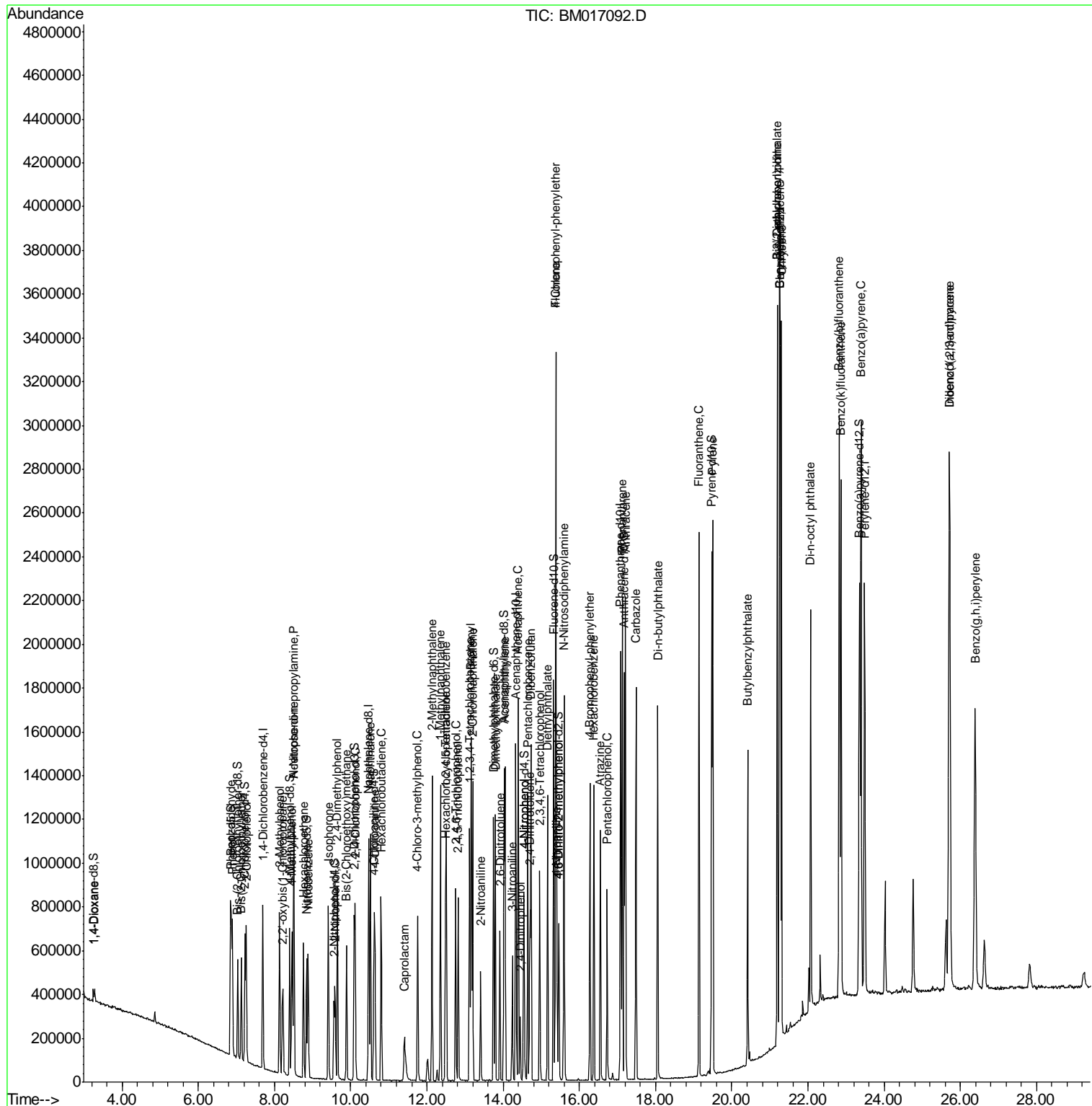
Internal Standards	R.T.	QIon	Response	Conc	Units	Dev(Min)

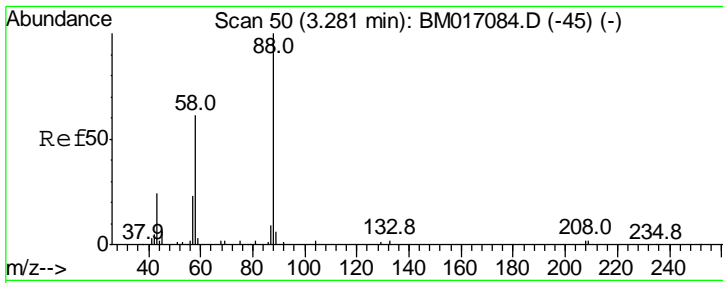
(#) = qualifier out of range (m) = manual integration (+) = signals summed						

Data Path : Z:\SVOASRV\HPCHEM1\BNA M\DATA\BM100818\
Data File : BM017092.D
Acq On : 09 Oct 2018 07:29
Operator : MJ/SJ
Sample : SSTDCCC020EC
Misc :
ALS Vial : 2 Sample Multiplier: 1

Instrument :
BNA_M
Client Sampled :

Quant Time: Oct 09 08:13:56 2018
Quant Method : Z:\SVOASRV\HPCHEM1\BNA_M\METHODS\SOM-EPA-BM100418MA.M
Quant Title : SVOA CALIBRATION
QLast Update : Tue Oct 09 08:11:45 2018
Response via : Initial Calibration

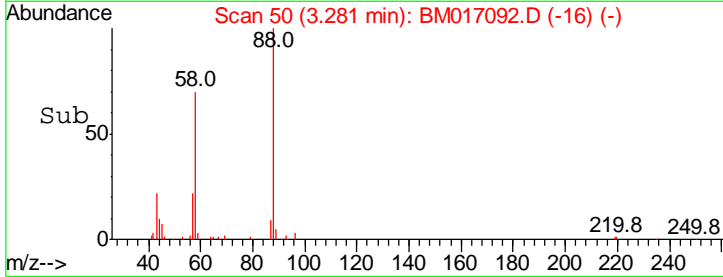
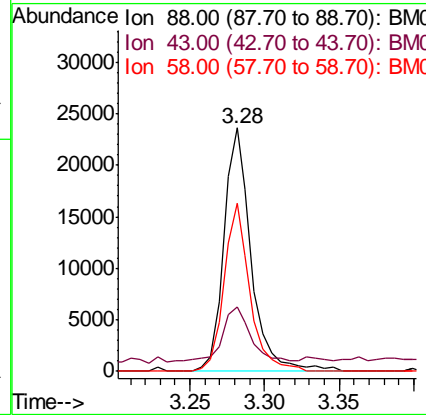
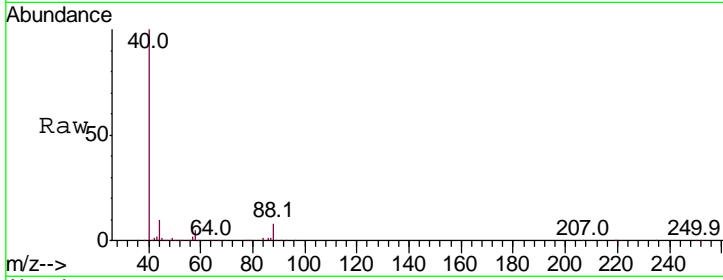




#2
 1,4-Dioxane
 Concen: 7.239 ng/uL
 RT: 3.28 min Scan# 50
 Delta R.T. 0.00 min
 Lab File: BM017092.D
 Acq: 09 Oct 2018 07:29

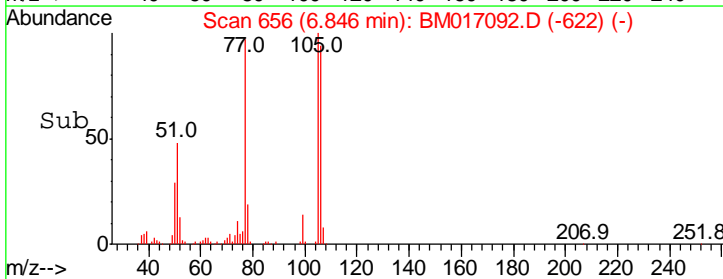
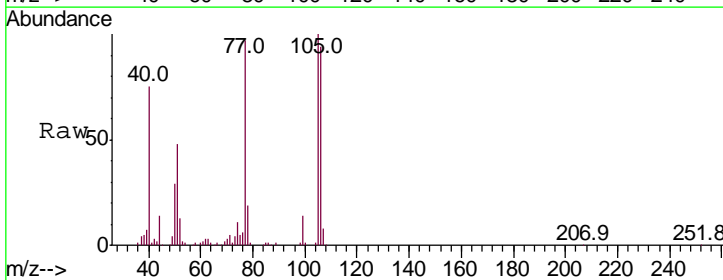
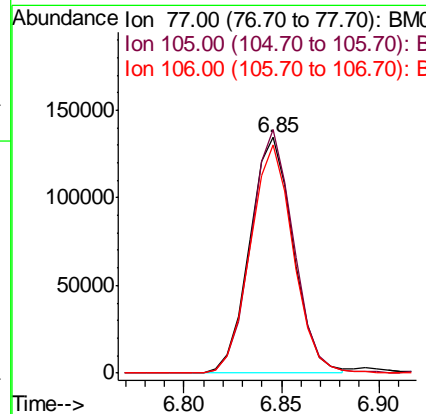
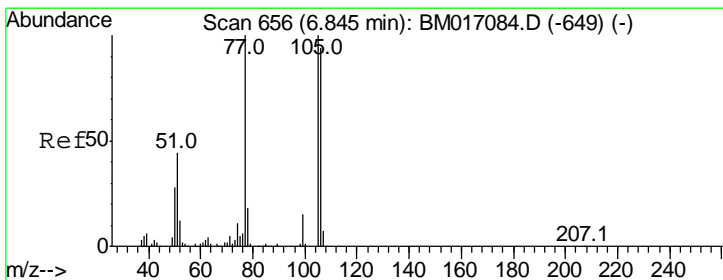
Instrument :
 BNA_M
 ClientSampled :

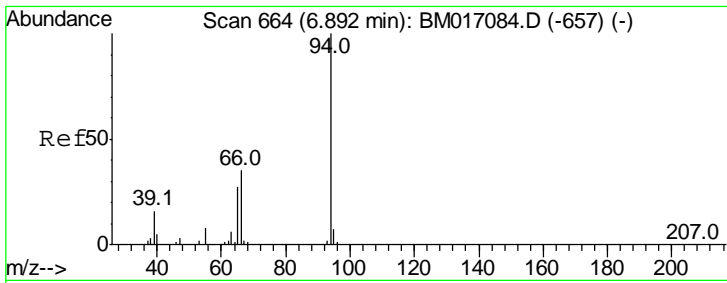
Tgt Ion	Resp	Lower	Upper
88	30316		
88	100		
43	26.7	25.0	37.4
58	68.9	55.0	82.4



#4
 Benzaldehyde
 Concen: 20.155 ng/ul
 RT: 6.85 min Scan# 656
 Delta R.T. 0.00 min
 Lab File: BM017092.D
 Acq: 09 Oct 2018 07:29

Tgt Ion	Resp	Lower	Upper
77	207187		
77	100		
105	103.4	75.4	113.2
106	96.8	73.8	110.8

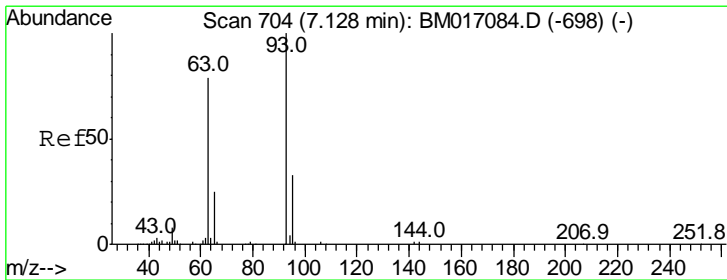
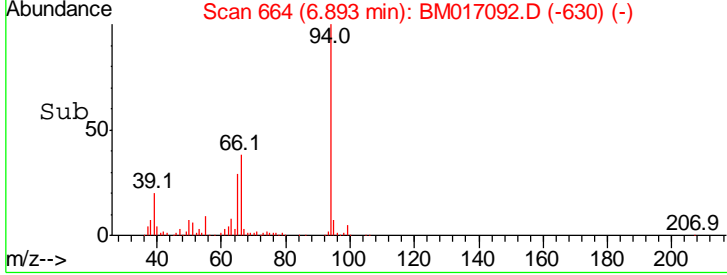
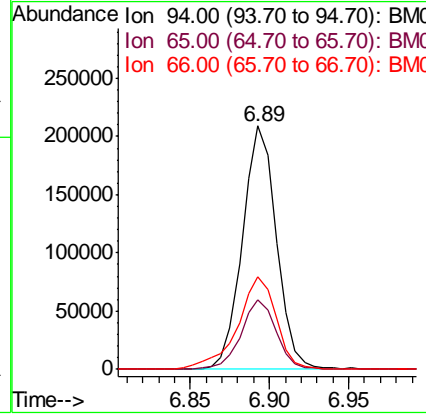
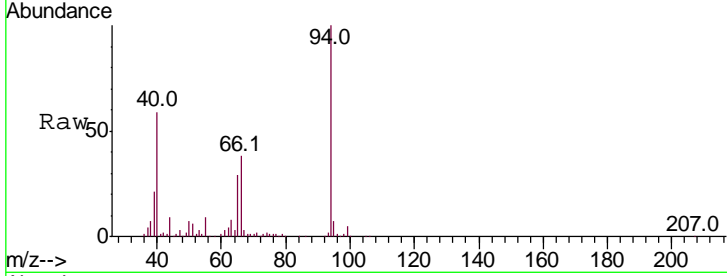




#6
 Phenol
 Concen: 18.766 ng/ul
 RT: 6.89 min Scan# 664
 Delta R.T. 0.00 min
 Lab File: BM017092.D
 Acq: 09 Oct 2018 07:29

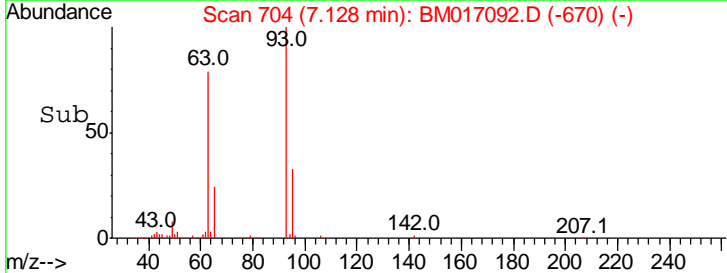
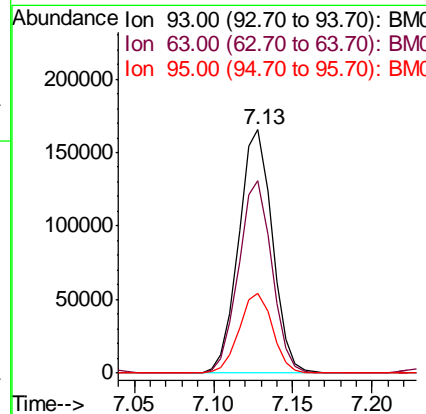
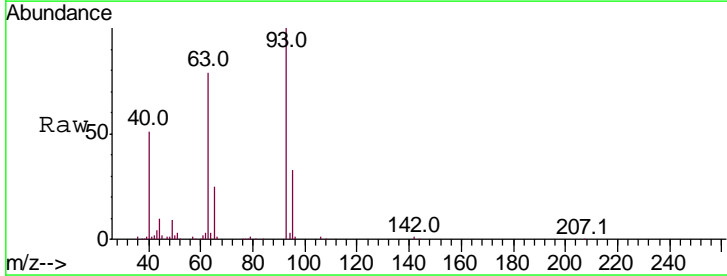
Instrument :
 BNA_M
ClientSampled :

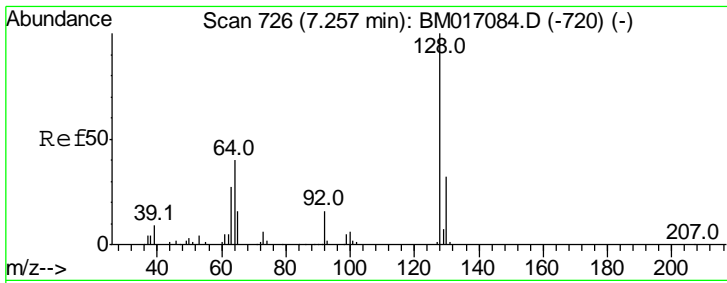
Tgt Ion	Resp	Lower	Upper
94	100		
65	28.7	22.8	34.2
66	38.1	29.5	44.3



#8
 Bis(2-Chloroethyl)ether
 Concen: 19.024 ng/ul
 RT: 7.13 min Scan# 704
 Delta R.T. 0.00 min
 Lab File: BM017092.D
 Acq: 09 Oct 2018 07:29

Tgt Ion	Resp	Lower	Upper
93	100		
63	79.2	62.5	93.7
95	32.6	26.0	39.0

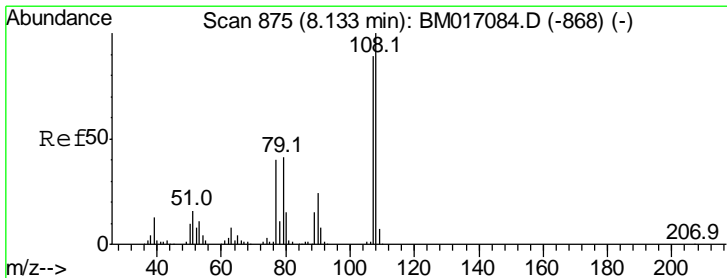
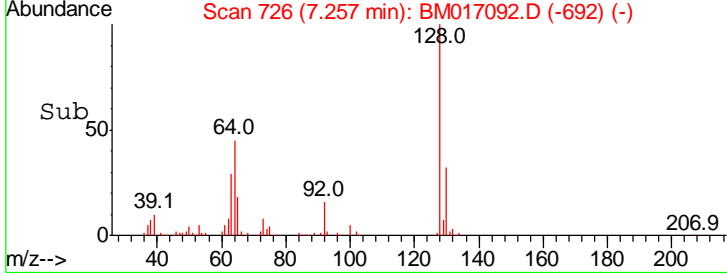
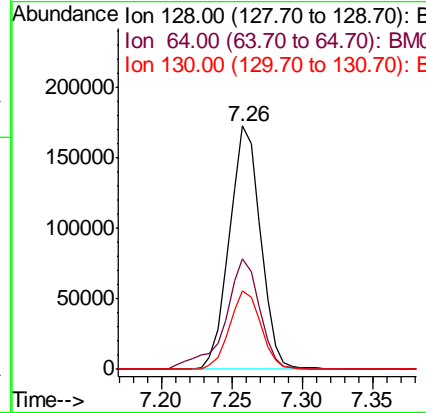
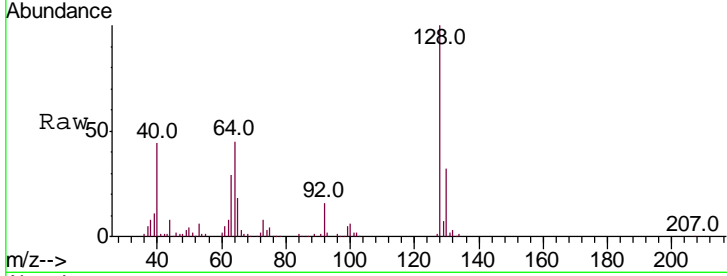




#10
 2-Chlorophenol
 Concen: 19.388 ng/ul
 RT: 7.26 min Scan# 726
 Delta R.T. 0.00 min
 Lab File: BM017092.D
 Acq: 09 Oct 2018 07:29

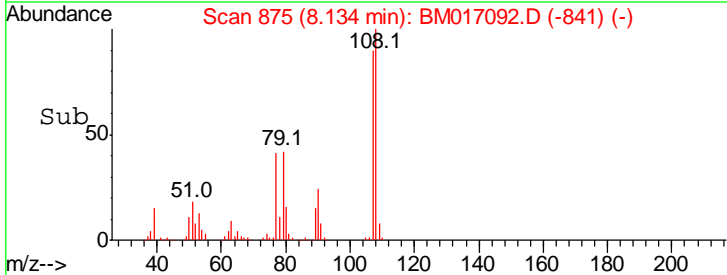
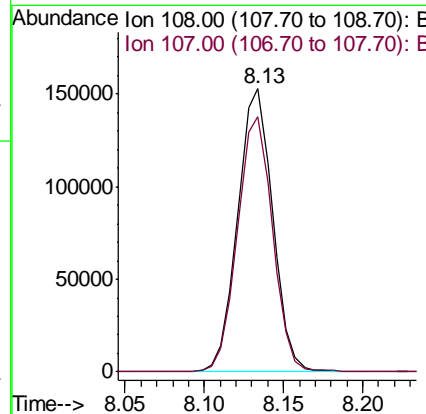
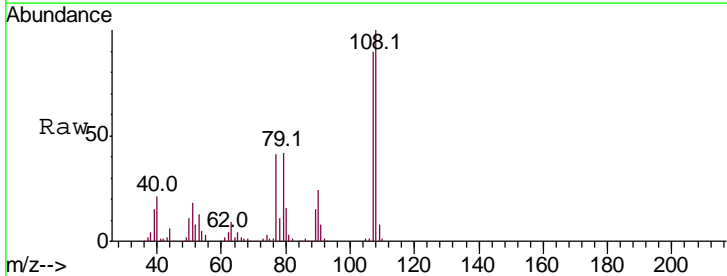
Instrument :
 BNA_M
 ClientSampled :

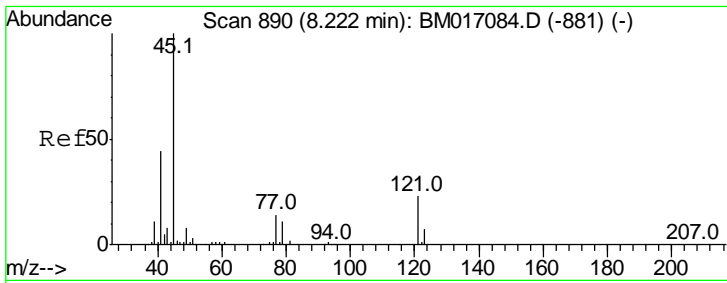
Tgt Ion	Resp	Lower	Upper
128	100		
64	45.1	37.2	55.8
130	32.3	26.1	39.1



#11
 2-Methylphenol
 Concen: 18.783 ng/ul
 RT: 8.13 min Scan# 875
 Delta R.T. 0.00 min
 Lab File: BM017092.D
 Acq: 09 Oct 2018 07:29

Tgt Ion	Resp	Lower	Upper
108	100		
107	90.2	70.3	105.5

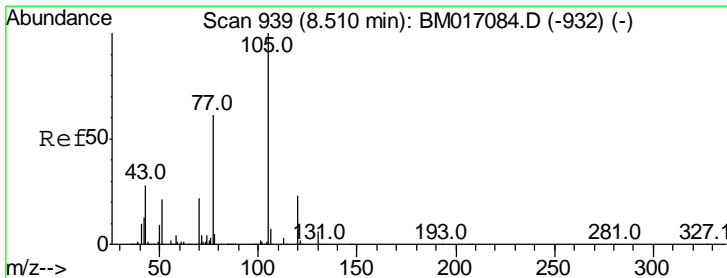
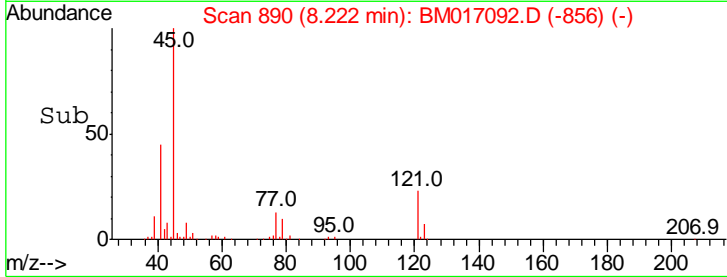
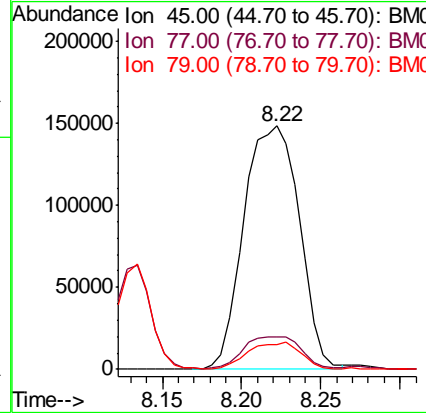
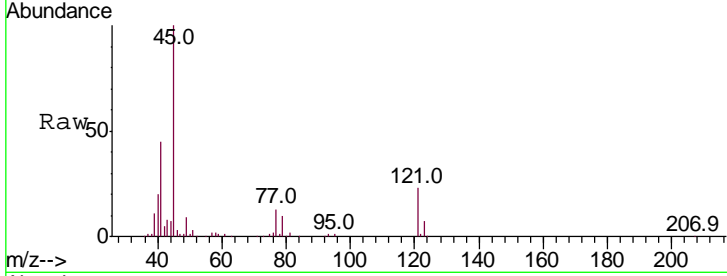




#12
 2,2'-oxybis(1-Chloropropane)
 Concen: 19.615 ng/ul
 RT: 8.22 min Scan# 890
 Delta R.T. 0.00 min
 Lab File: BM017092.D
 Acq: 09 Oct 2018 07:29

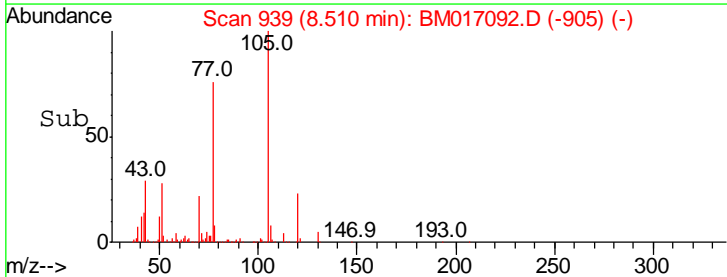
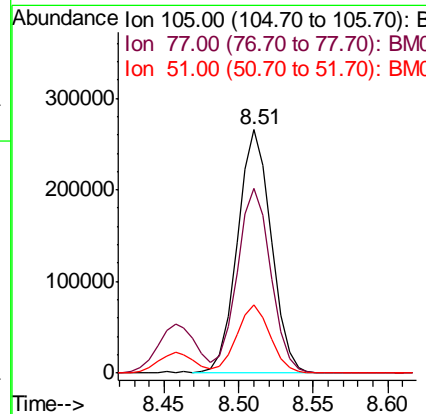
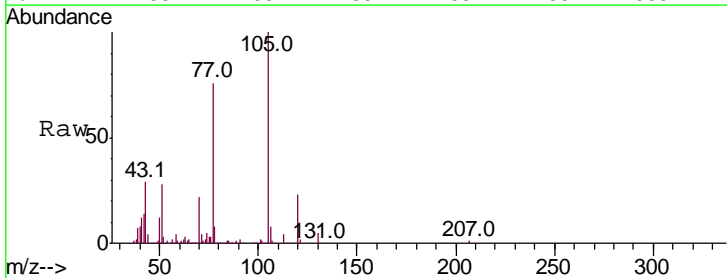
Instrument :
 BNA_M
 ClientSampled :

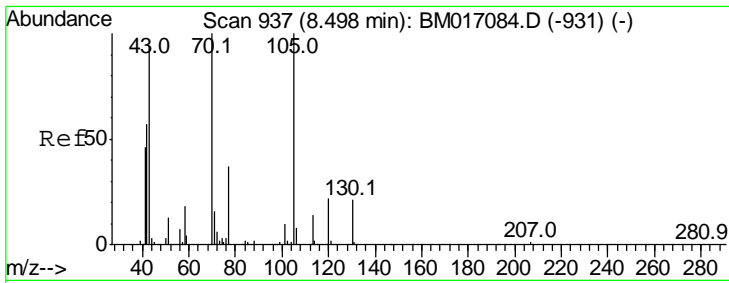
Tgt Ion	Resp	Lower	Upper
45	361865		
Ion Ratio			
45	100		
77	13.4	11.0	16.6
79	10.0	8.4	12.6



#14
 Acetophenone
 Concen: 20.198 ng/ul
 RT: 8.51 min Scan# 939
 Delta R.T. 0.00 min
 Lab File: BM017092.D
 Acq: 09 Oct 2018 07:29

Tgt Ion	Resp	Lower	Upper
105	416488		
Ion Ratio			
105	100		
77	75.7	59.8	89.6
51	27.8	21.8	32.8

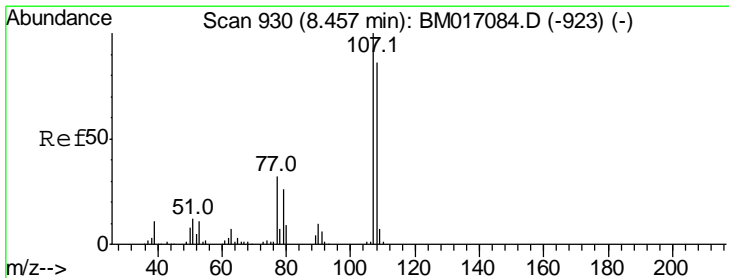
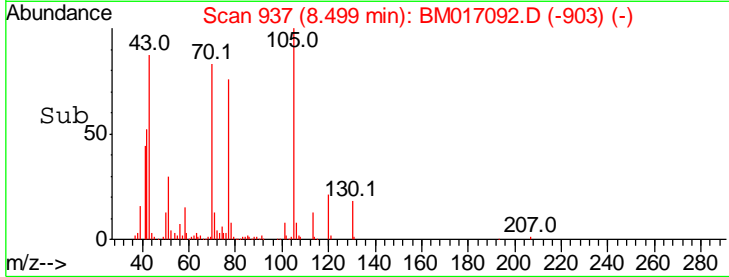
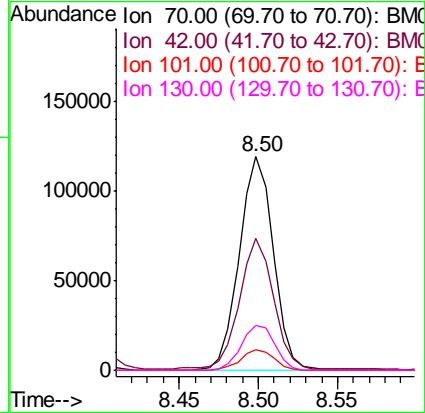
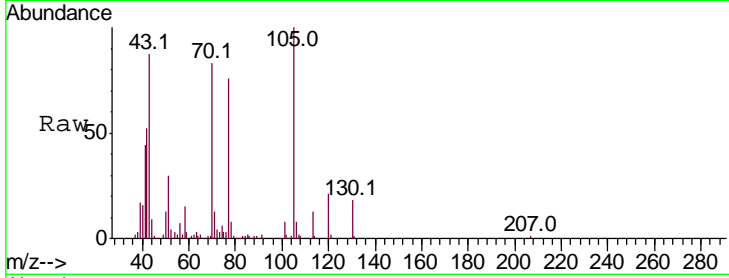




#15
 N-Nitroso-di-n-propylamine
 Concen: 18.557 ng/ul
 RT: 8.50 min Scan# 937
 Delta R.T. 0.00 min
 Lab File: BM017092.D
 Acq: 09 Oct 2018 07:29

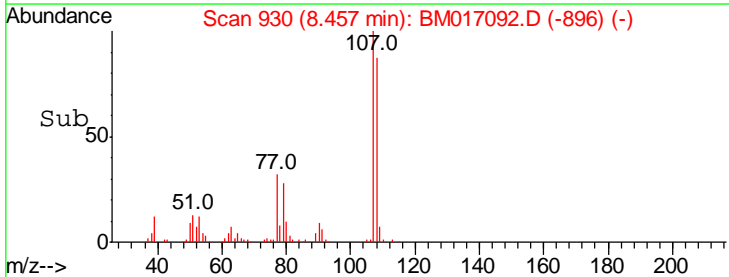
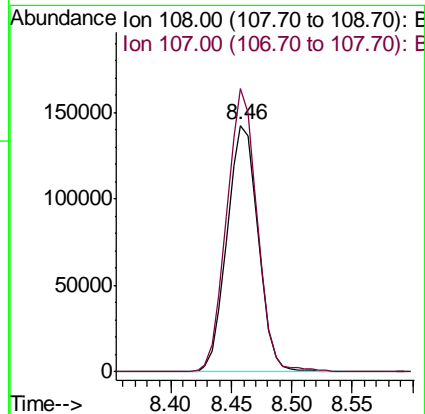
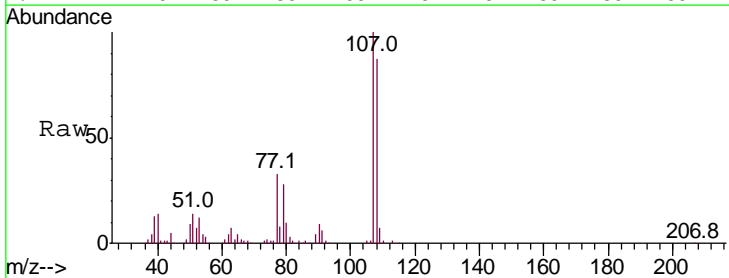
Instrument :
 BNA_M
 ClientSampled :

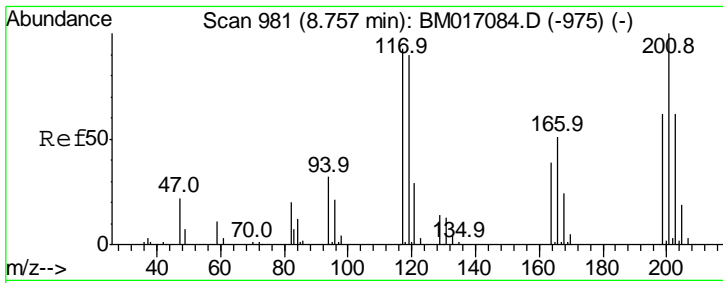
Tgt Ion	Resp	Lower	Upper
70	178108		
42	61.8	45.1	67.7
101	9.6	7.5	11.3
130	21.2	17.3	25.9



#16
 4-Methylphenol
 Concen: 19.150 ng/ul
 RT: 8.46 min Scan# 930
 Delta R.T. 0.00 min
 Lab File: BM017092.D
 Acq: 09 Oct 2018 07:29

Tgt Ion	Resp	Lower	Upper
108	255940		
107	114.7	89.8	134.8

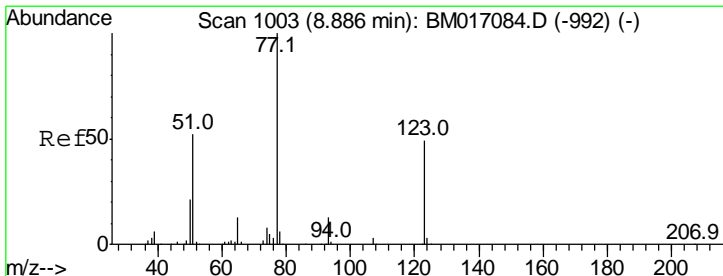
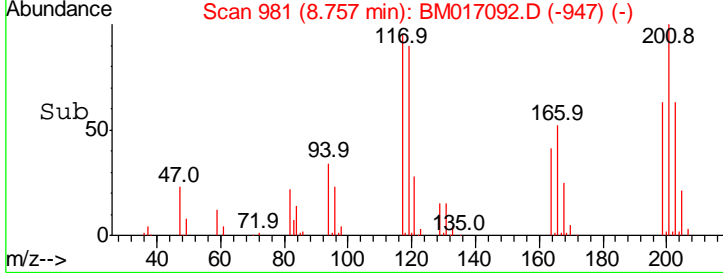
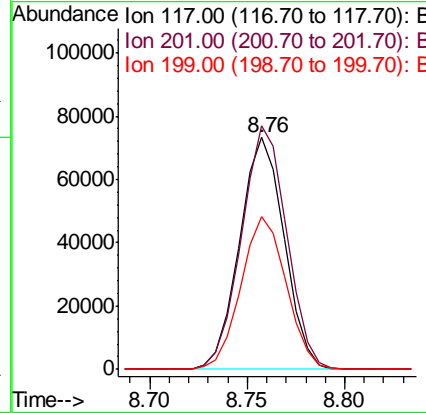
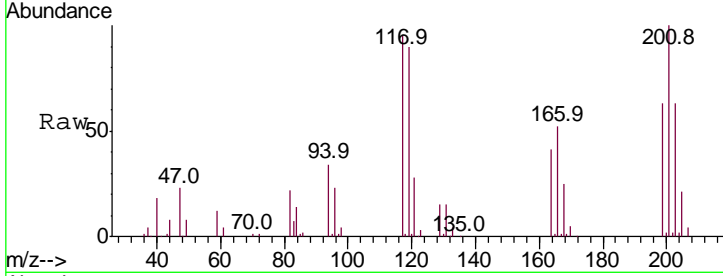




#17
 Hexachloroethane
 Concen: 20.760 ng/ul
 RT: 8.76 min Scan# 981
 Delta R.T. 0.00 min
 Lab File: BM017092.D
 Acq: 09 Oct 2018 07:29

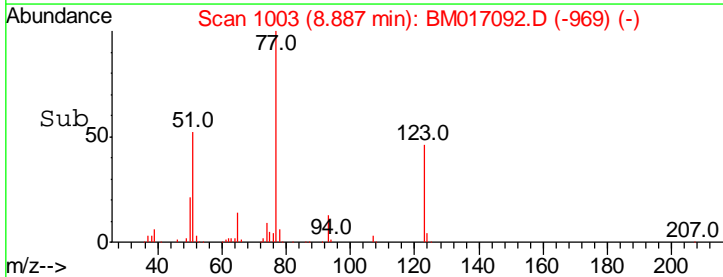
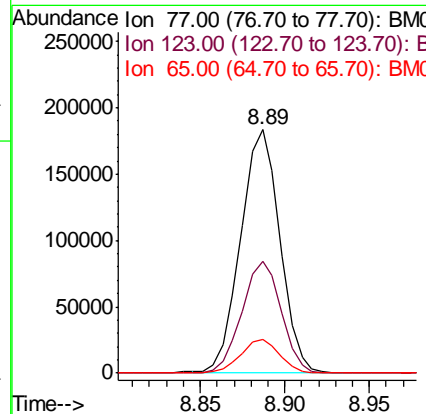
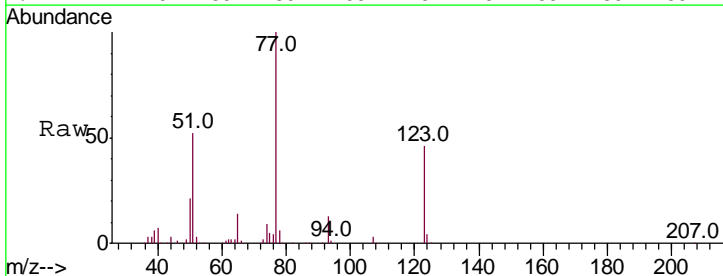
Instrument :
 BNA_M
 ClientSampled :

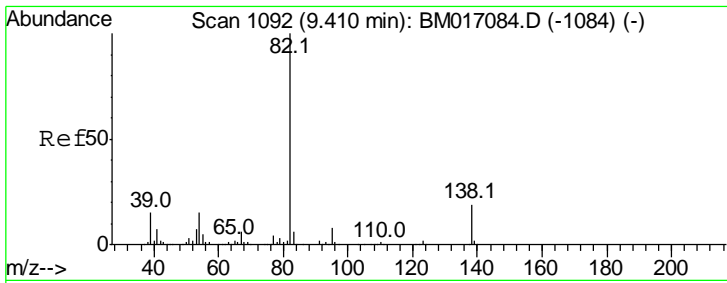
Tgt Ion	Resp	Lower	Upper
117	100		
201	104.9	85.1	127.7
199	65.9	52.3	78.5



#20
 Nitrobenzene
 Concen: 19.502 ng/ul
 RT: 8.89 min Scan# 1003
 Delta R.T. 0.00 min
 Lab File: BM017092.D
 Acq: 09 Oct 2018 07:29

Tgt Ion	Resp	Lower	Upper
77	100		
123	46.0	37.6	56.4
65	14.1	10.1	15.1

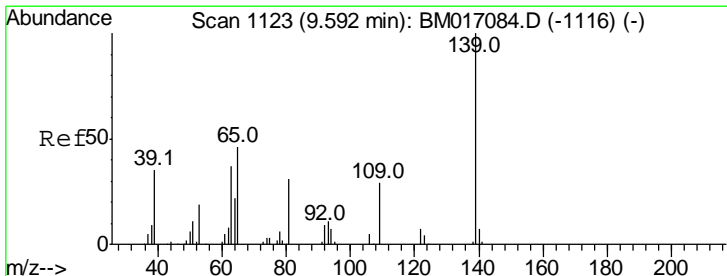
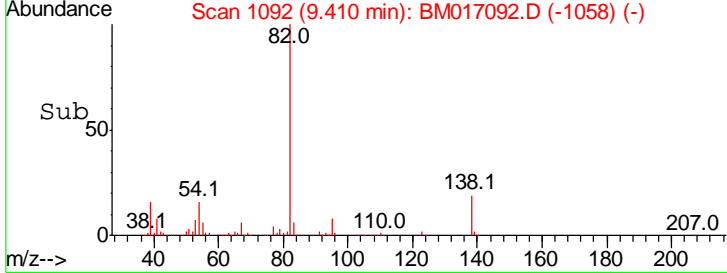
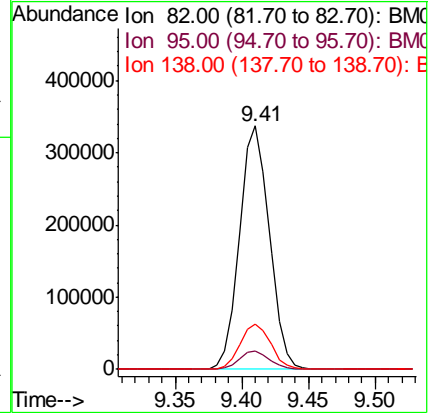
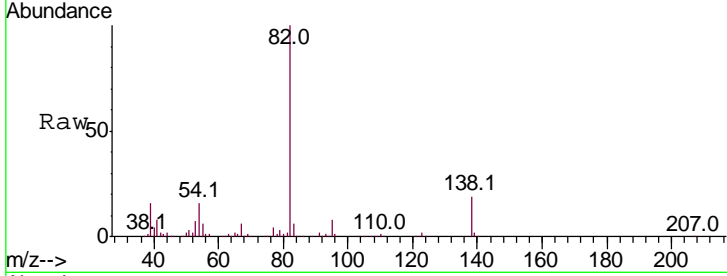




#21
 Isophorone
 Concen: 18.923 ng/ul
 RT: 9.41 min Scan# 1092
 Delta R.T. 0.00 min
 Lab File: BM017092.D
 Acq: 09 Oct 2018 07:29

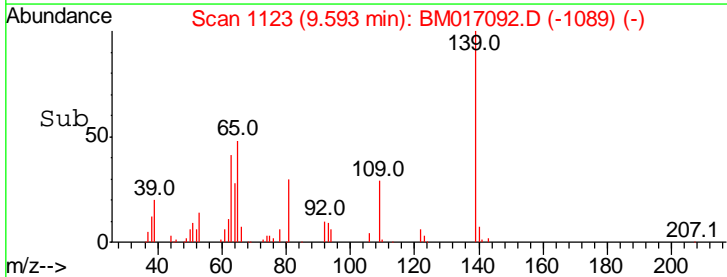
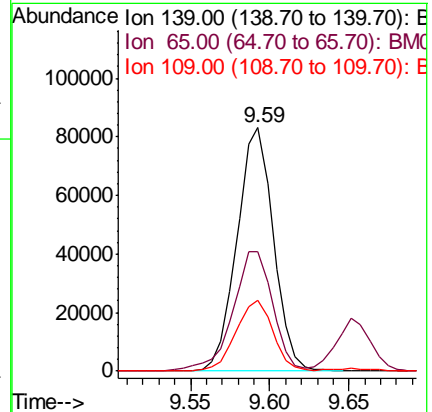
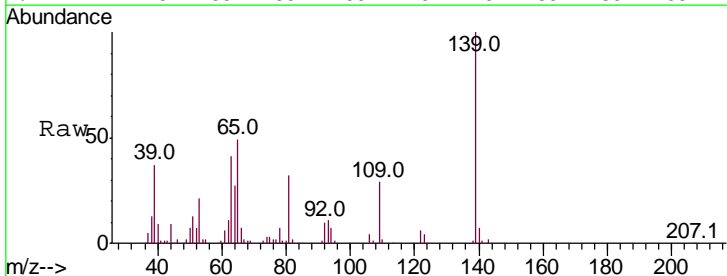
Instrument :
 BNA_M
 ClientSampled :

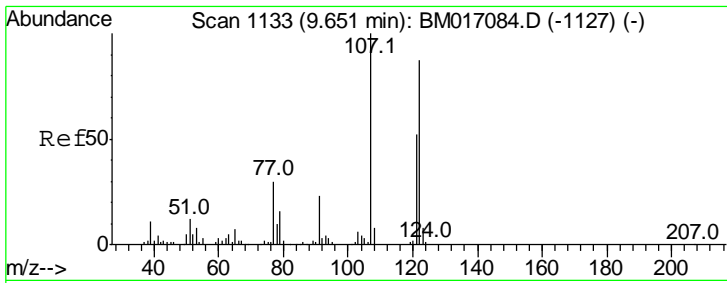
Tgt Ion	Resp	Lower	Upper
82	100		
95	7.6	5.8	8.8
138	18.6	14.6	22.0



#23
 2-Nitrophenol
 Concen: 17.877 ng/ul
 RT: 9.59 min Scan# 1123
 Delta R.T. 0.00 min
 Lab File: BM017092.D
 Acq: 09 Oct 2018 07:29

Tgt Ion	Resp	Lower	Upper
139	100		
65	49.2	38.2	57.2
109	29.0	22.7	34.1

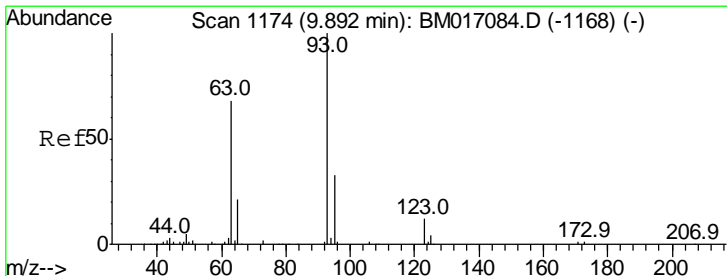
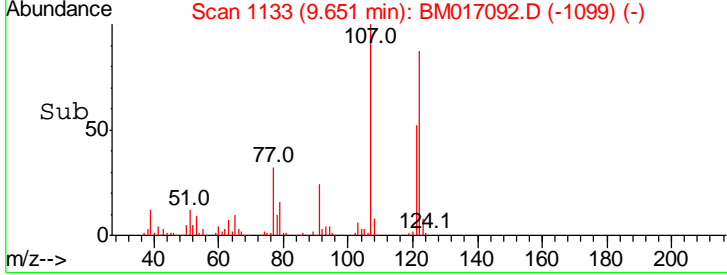
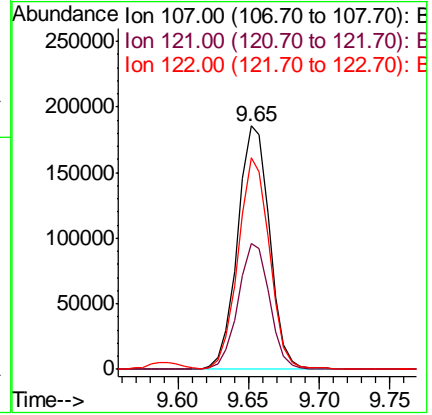
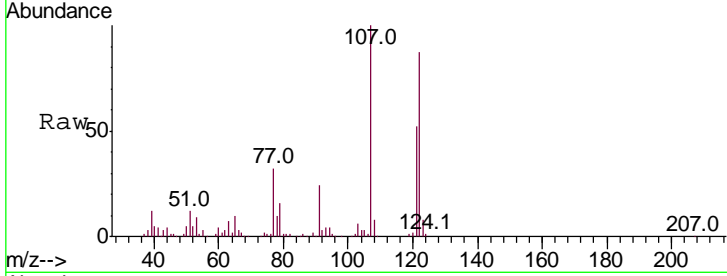




#24
 2,4-Dimethylphenol
 Concen: 19.504 ng/ul
 RT: 9.65 min Scan# 1133
 Delta R.T. 0.00 min
 Lab File: BM017092.D
 Acq: 09 Oct 2018 07:29

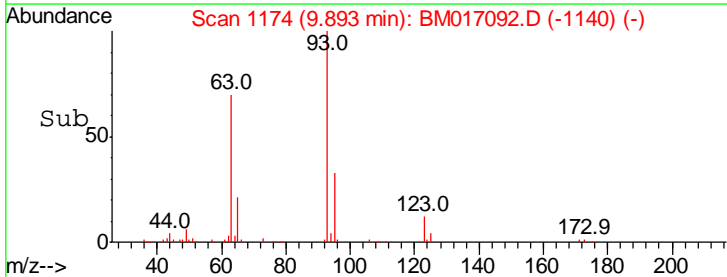
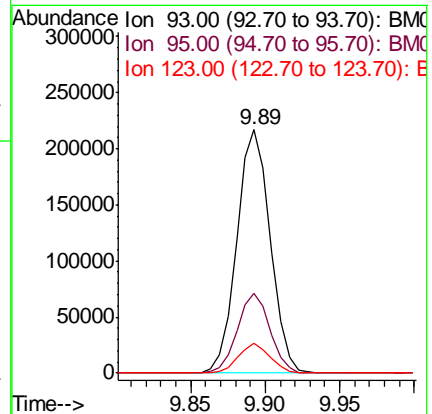
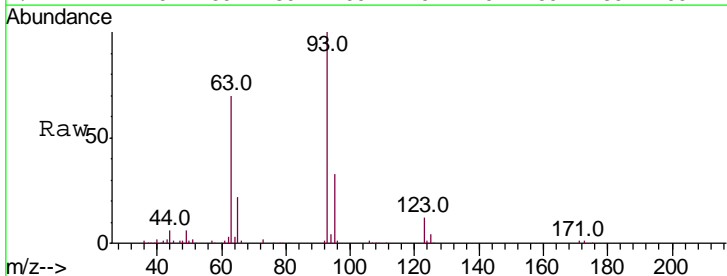
Instrument :
 BNA_M
 ClientSampled :

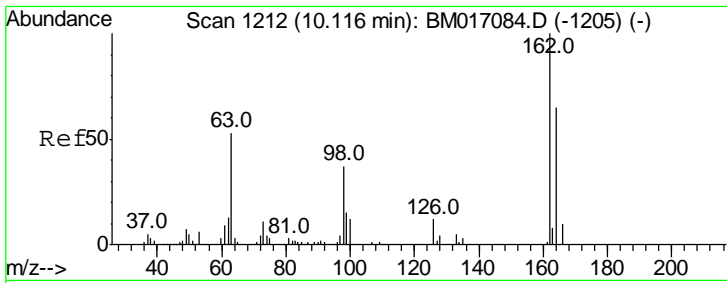
Tgt Ion	Resp	Lower	Upper
107	100		
121	51.8	42.2	63.2
122	86.7	69.4	104.0



#25
 Bis(2-Chloroethoxy)methane
 Concen: 18.992 ng/ul
 RT: 9.89 min Scan# 1174
 Delta R.T. 0.00 min
 Lab File: BM017092.D
 Acq: 09 Oct 2018 07:29

Tgt Ion	Resp	Lower	Upper
93	100		
95	32.9	25.8	38.8
123	12.4	9.4	14.2

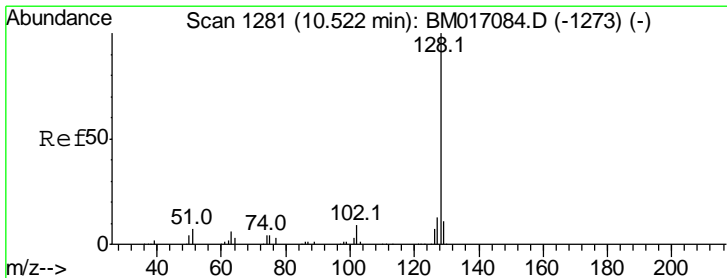
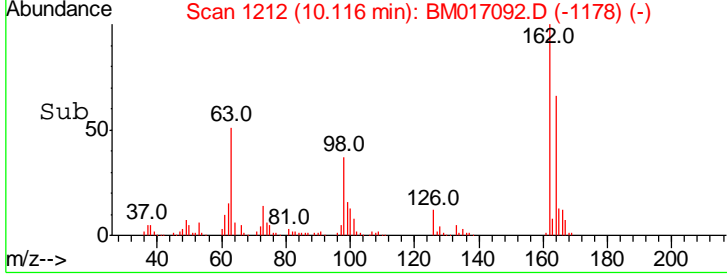
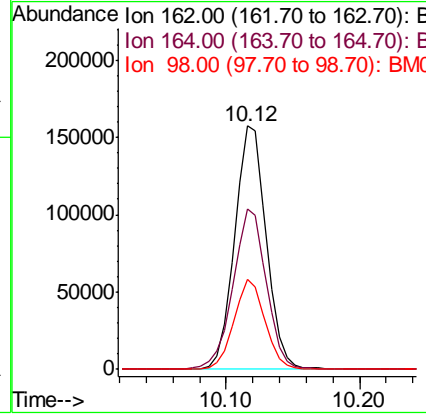
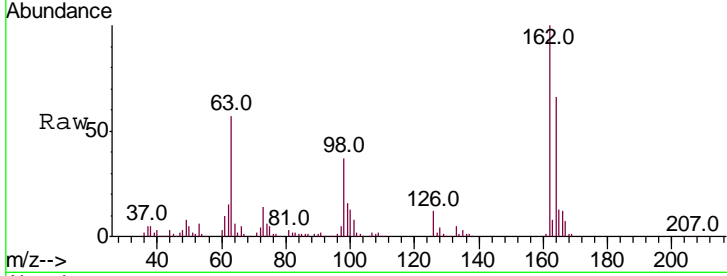




#27
 2,4-Dichlorophenol
 Concen: 19.826 ng/ul
 RT: 10.12 min Scan# 1212
 Delta R.T. 0.00 min
 Lab File: BM017092.D
 Acq: 09 Oct 2018 07:29

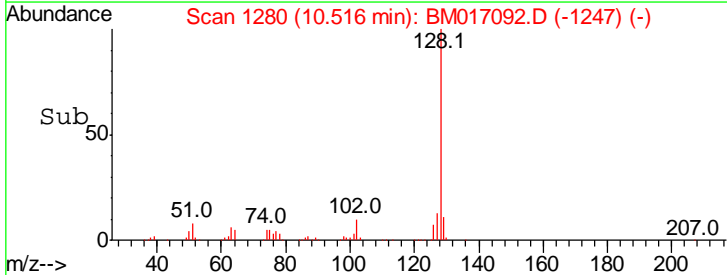
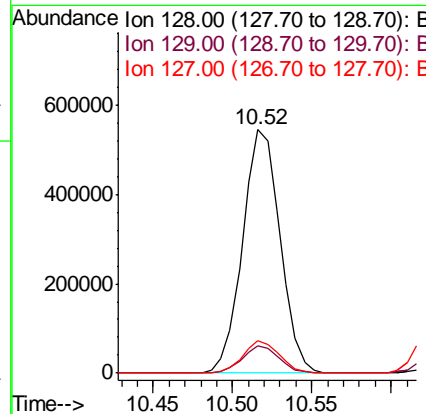
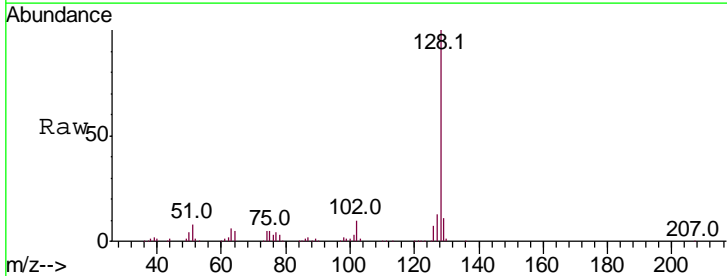
Instrument :
 BNA_M
 ClientSampled :

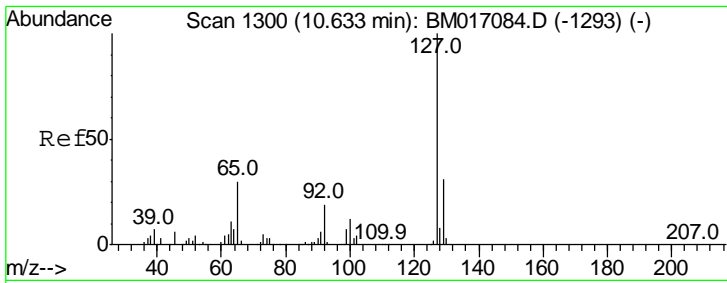
Tgt Ion	Resp	Lower	Upper
162	100		
164	66.0	52.4	78.6
98	36.9	28.4	42.6



#28
 Naphthalene
 Concen: 19.753 ng/ul
 RT: 10.52 min Scan# 1280
 Delta R.T. -0.01 min
 Lab File: BM017092.D
 Acq: 09 Oct 2018 07:29

Tgt Ion	Resp	Lower	Upper
128	100		
129	11.1	8.7	13.1
127	13.4	10.5	15.7

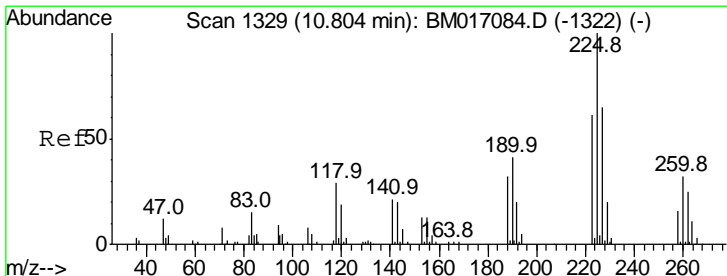
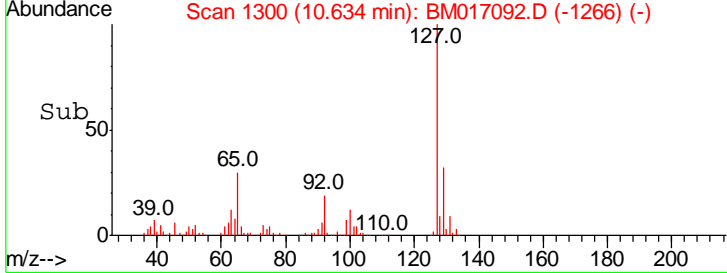
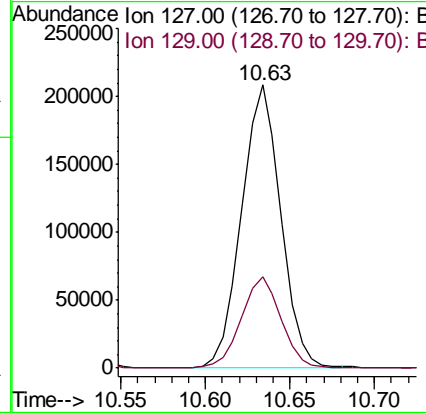
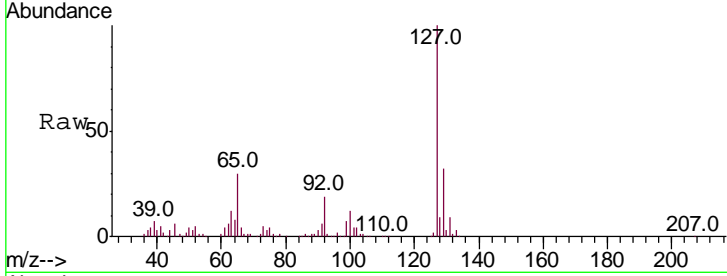




#30
 4-Chloroaniline
 Concen: 20.488 ng/ul
 RT: 10.63 min Scan# 1300
 Delta R.T. 0.00 min
 Lab File: BM017092.D
 Acq: 09 Oct 2018 07:29

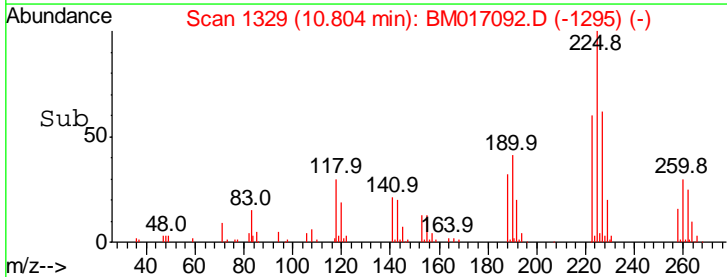
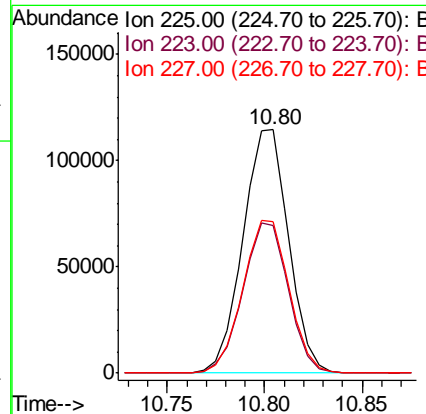
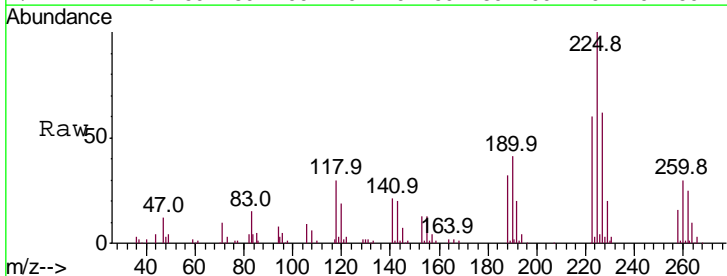
Instrument :
 BNA_M
 ClientSampleID :

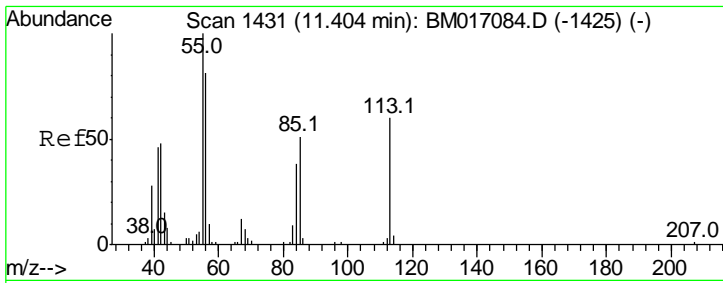
Tgt Ion	Resp	Lower	Upper
127	100		
129	32.2	25.7	38.5



#31
 Hexachlorobutadiene
 Concen: 20.787 ng/ul
 RT: 10.80 min Scan# 1329
 Delta R.T. 0.00 min
 Lab File: BM017092.D
 Acq: 09 Oct 2018 07:29

Tgt Ion	Resp	Lower	Upper
225	100		
223	60.5	48.6	72.8
227	62.3	49.6	74.4

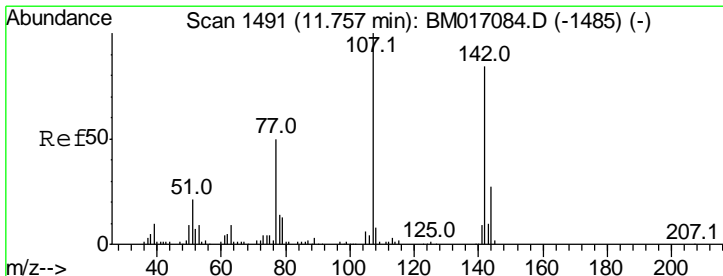
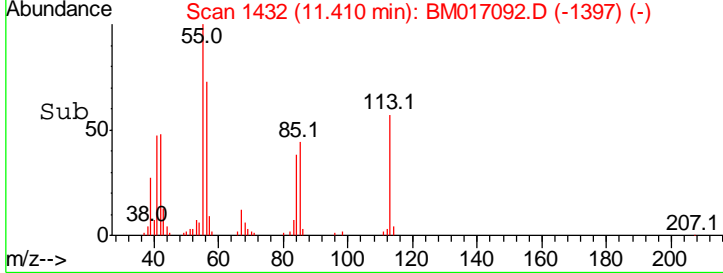
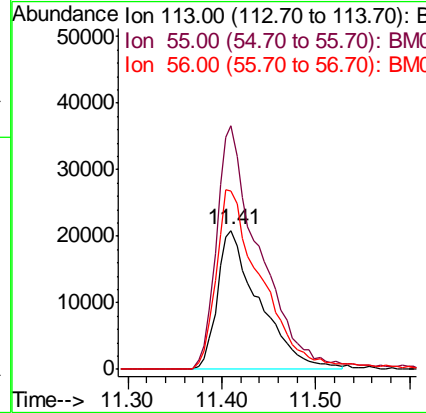
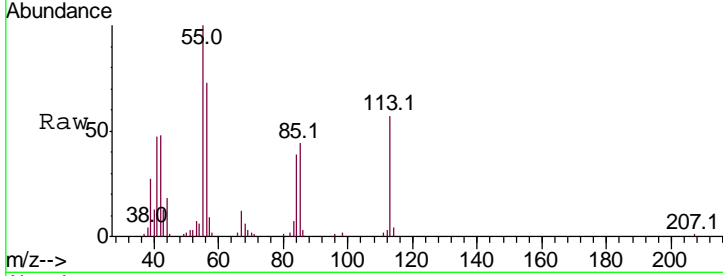




#32
 Caprolactam
 Concen: 16.243 ng/ul
 RT: 11.41 min Scan# 1432
 Delta R.T. 0.01 min
 Lab File: BM017092.D
 Acq: 09 Oct 2018 07:29

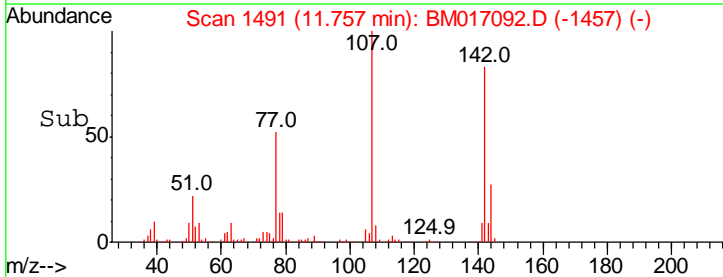
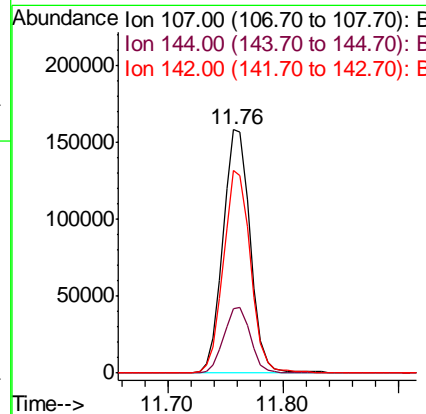
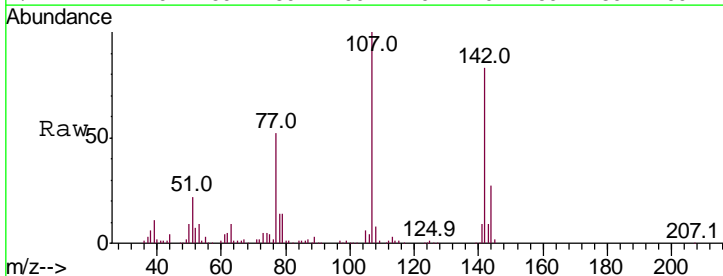
Instrument :
 BNA_M
 ClientSampled :

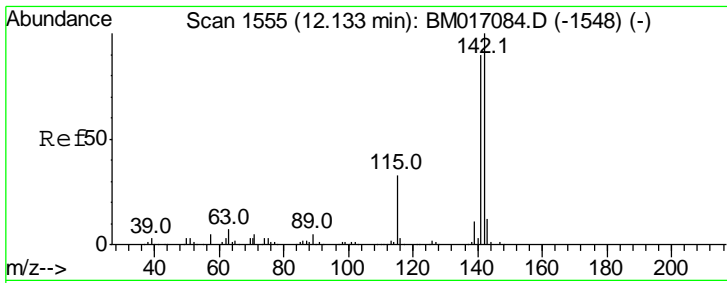
Tgt Ion	Resp	Lower	Upper
113	100		
55	175.0	133.3	199.9
56	127.9	98.9	148.3



#33
 4-Chloro-3-methylphenol
 Concen: 19.261 ng/ul
 RT: 11.76 min Scan# 1491
 Delta R.T. 0.00 min
 Lab File: BM017092.D
 Acq: 09 Oct 2018 07:29

Tgt Ion	Resp	Lower	Upper
107	100		
144	26.6	22.2	33.4
142	83.4	67.0	100.6

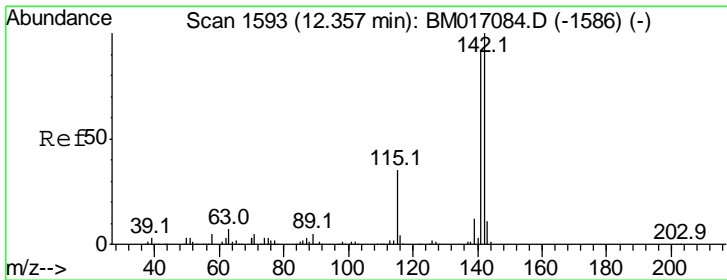
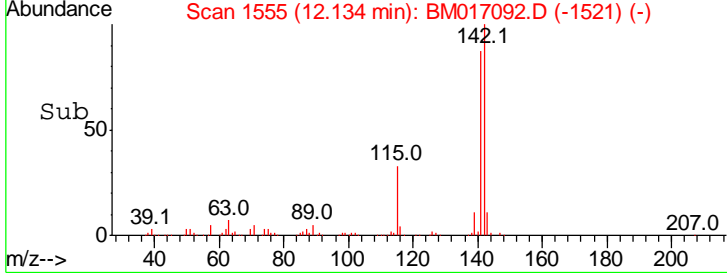
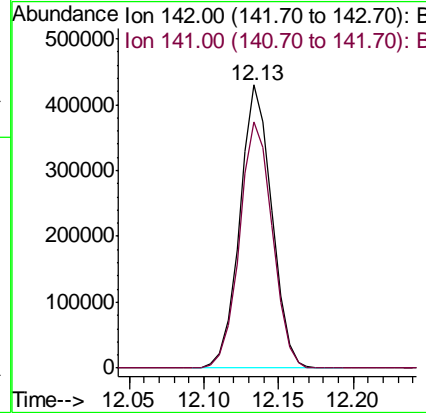
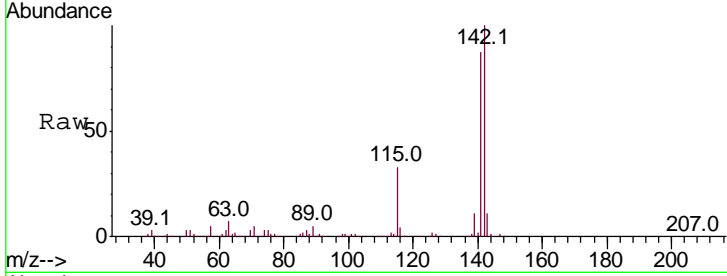




#34
 2-Methylnaphthalene
 Concen: 19.979 ng/ul
 RT: 12.13 min Scan# 1555
 Delta R.T. 0.00 min
 Lab File: BM017092.D
 Acq: 09 Oct 2018 07:29

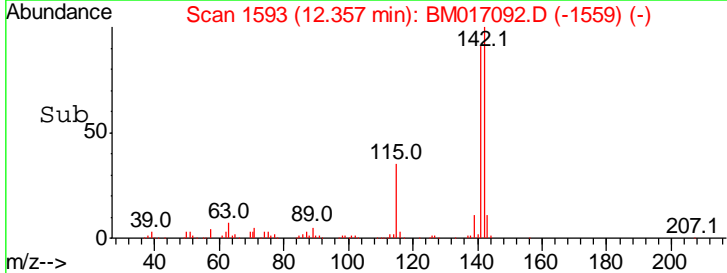
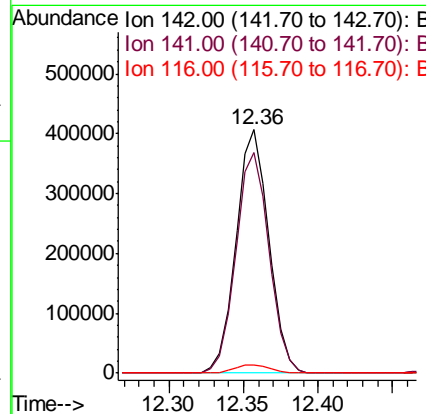
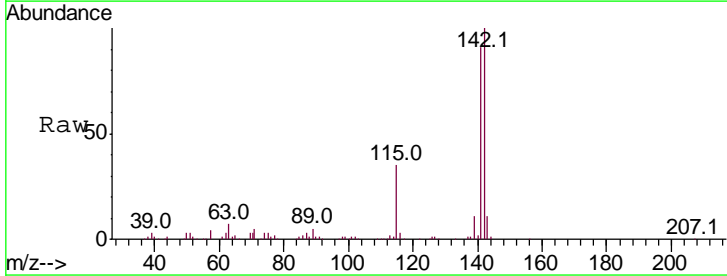
Instrument :
 BNA_M
 ClientSampled :

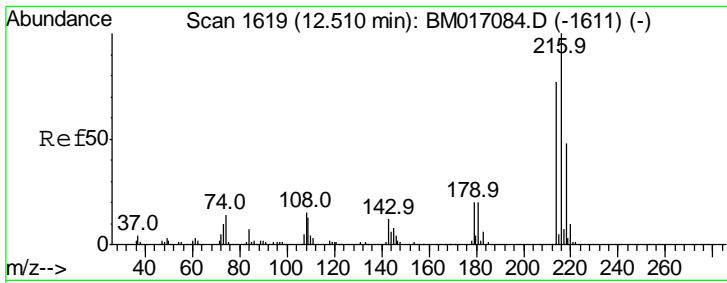
Tgt Ion	Resp	Lower	Upper
142	100		
141	87.1	71.5	107.3



#35
 1-Methylnaphthalene
 Concen: 19.927 ng/ul
 RT: 12.36 min Scan# 1593
 Delta R.T. 0.00 min
 Lab File: BM017092.D
 Acq: 09 Oct 2018 07:29

Tgt Ion	Resp	Lower	Upper
142	100		
141	90.8	74.2	111.4
116	3.4	2.6	4.0

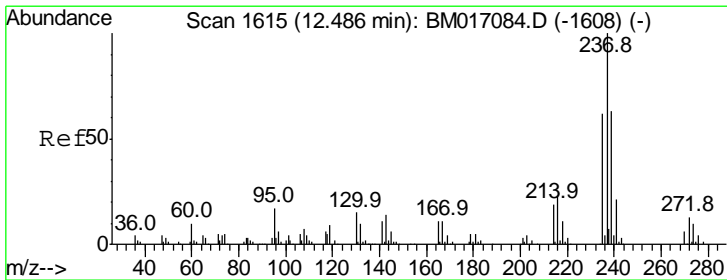
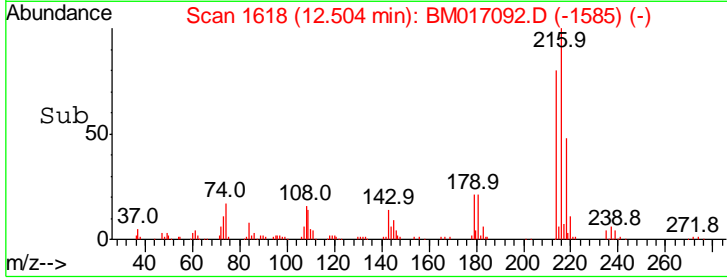
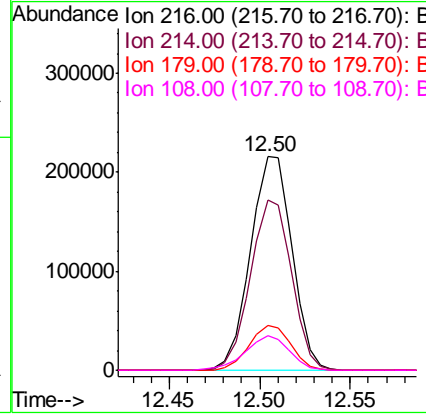
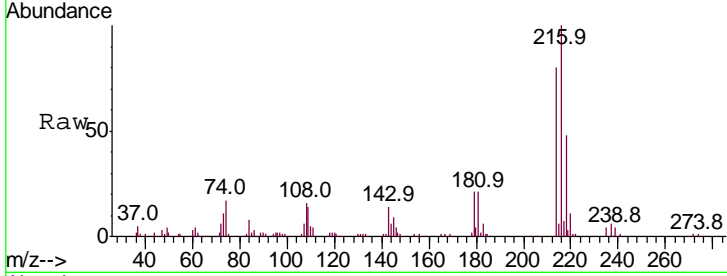




#37
 1,2,4,5-Tetrachlorobenzene
 Concen: 20.277 ng/ul
 RT: 12.50 min Scan# 1618
 Delta R.T. -0.01 min
 Lab File: BM017092.D
 Acq: 09 Oct 2018 07:29

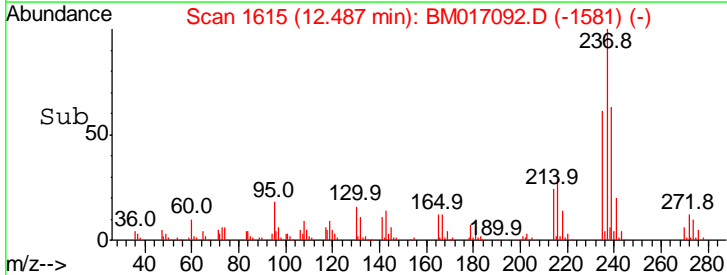
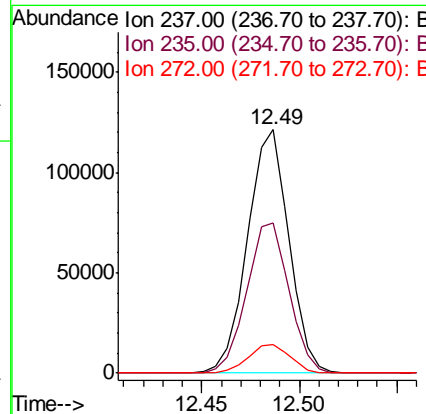
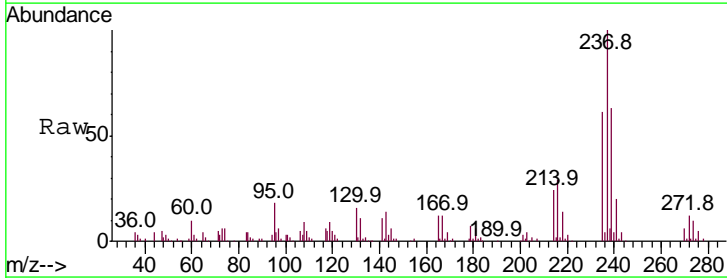
Instrument :
 BNA_M
 ClientSampled :

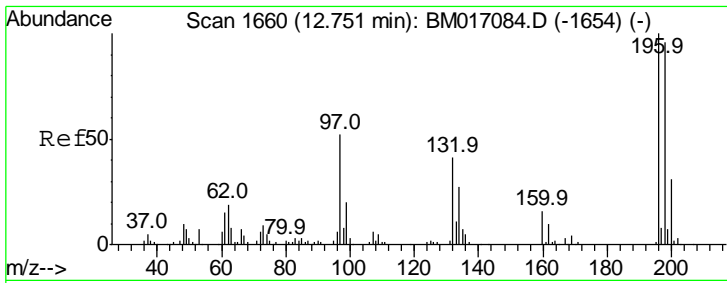
Tgt Ion	Resp	Lower	Upper
216	100		
214	79.7	61.0	91.6
179	20.9	16.6	24.8
108	16.5	12.7	19.1



#38
 Hexachlorocyclopentadiene
 Concen: 16.321 ng/ul
 RT: 12.49 min Scan# 1615
 Delta R.T. 0.00 min
 Lab File: BM017092.D
 Acq: 09 Oct 2018 07:29

Tgt Ion	Resp	Lower	Upper
237	100		
235	61.5	52.1	78.1
272	12.6	10.4	15.6

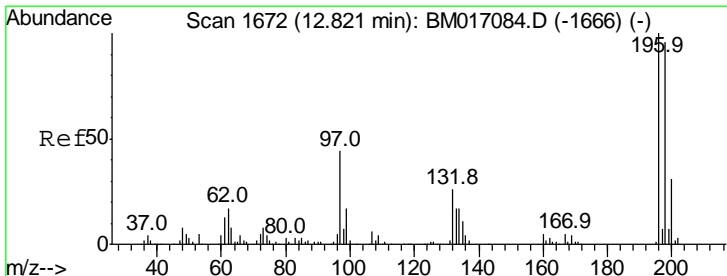
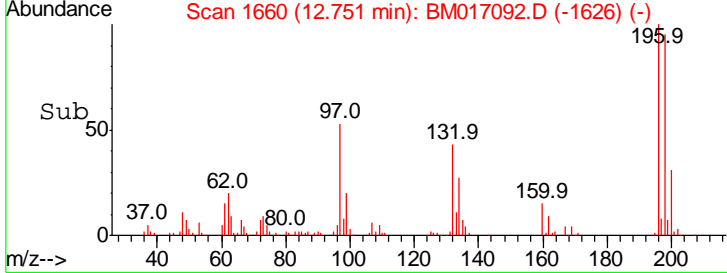
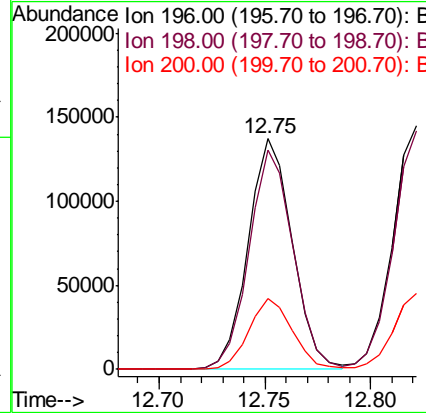
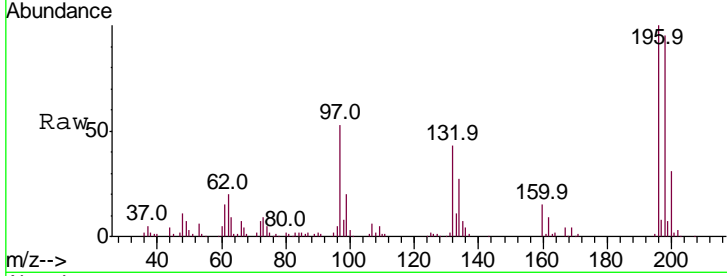




#39
 2,4,6-Trichlorophenol
 Concen: 19.409 ng/ul
 RT: 12.75 min Scan# 1660
 Delta R.T. 0.00 min
 Lab File: BM017092.D
 Acq: 09 Oct 2018 07:29

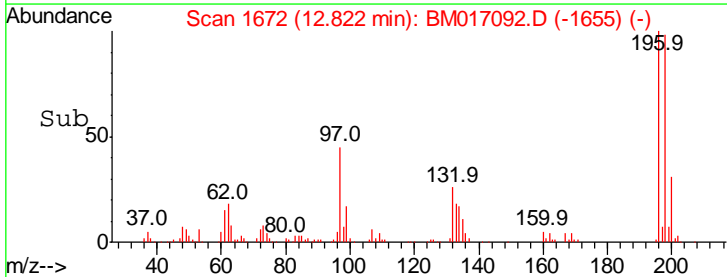
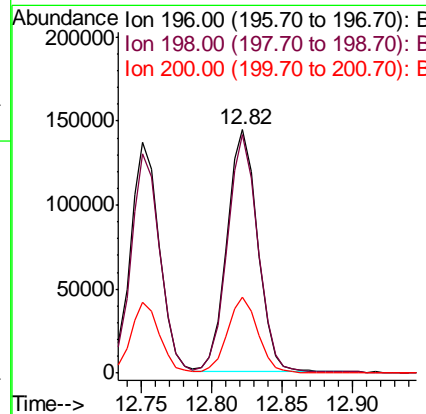
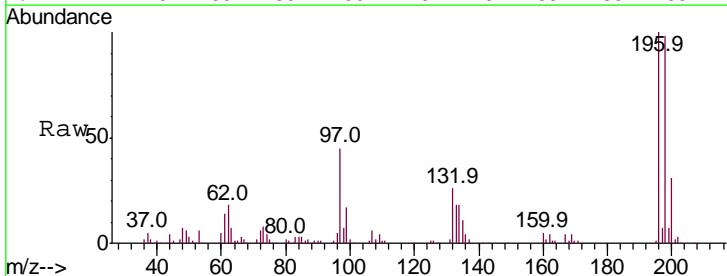
Instrument :
 BNA_M
 ClientSampled :

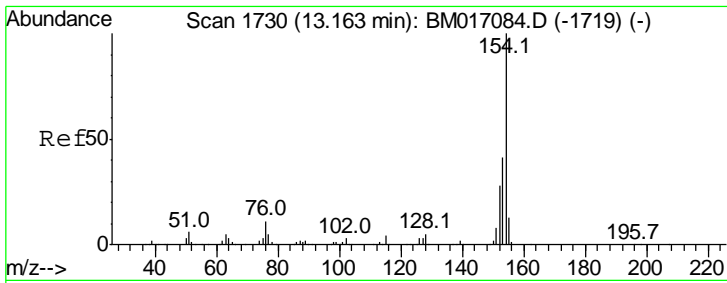
Tgt Ion	Resp	Lower	Upper
196	100		
198	95.5	79.9	119.9
200	30.9	25.6	38.4



#40
 2,4,5-Trichlorophenol
 Concen: 19.864 ng/ul
 RT: 12.82 min Scan# 1672
 Delta R.T. 0.00 min
 Lab File: BM017092.D
 Acq: 09 Oct 2018 07:29

Tgt Ion	Resp	Lower	Upper
196	100		
198	97.8	79.2	118.8
200	31.1	25.0	37.6

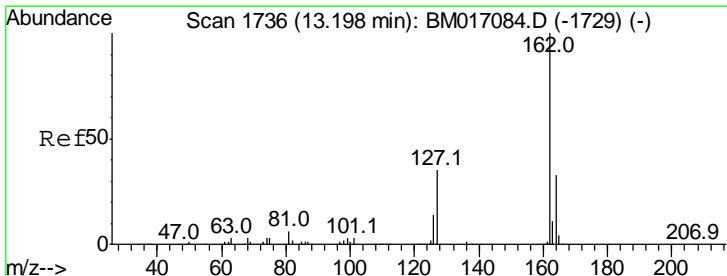
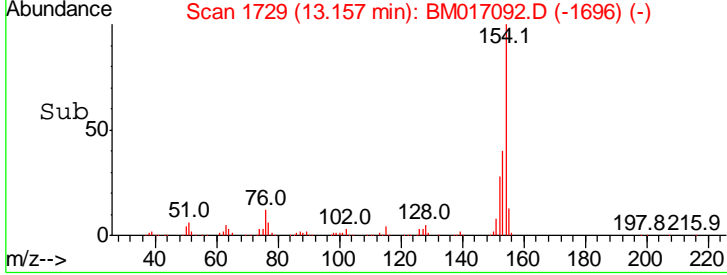
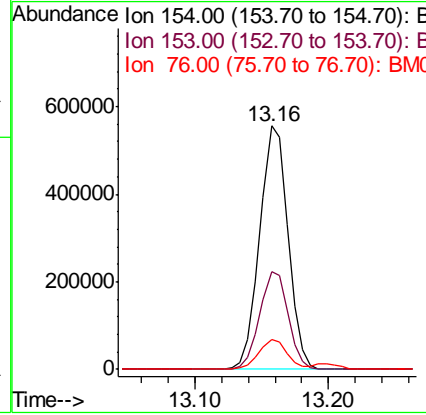
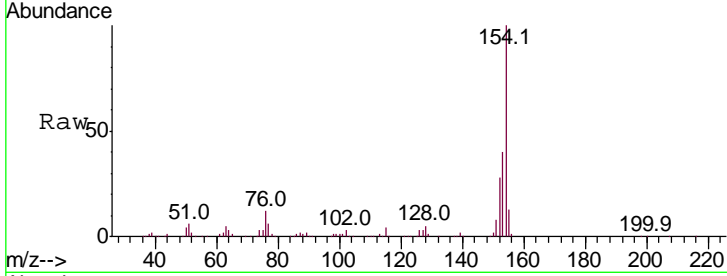




#41
 1,1'-Biphenyl
 Concen: 19.931 ng/ul
 RT: 13.16 min Scan# 1729
 Delta R.T. -0.01 min
 Lab File: BM017092.D
 Acq: 09 Oct 2018 07:29

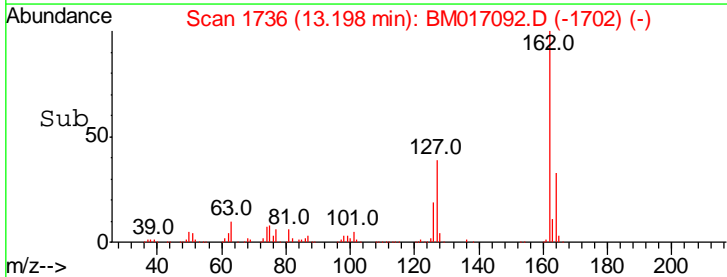
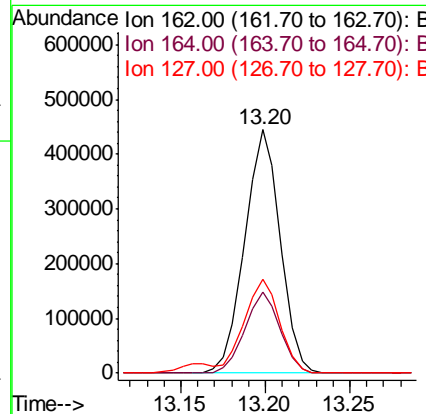
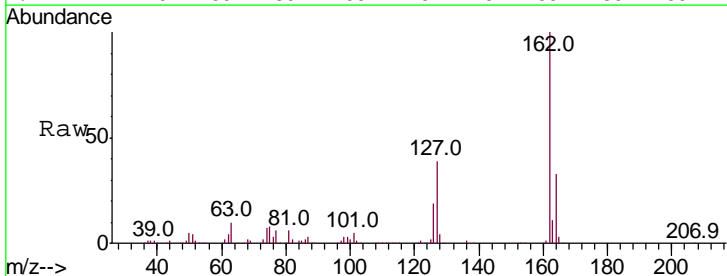
Instrument :
 BNA_M
 ClientSampled :

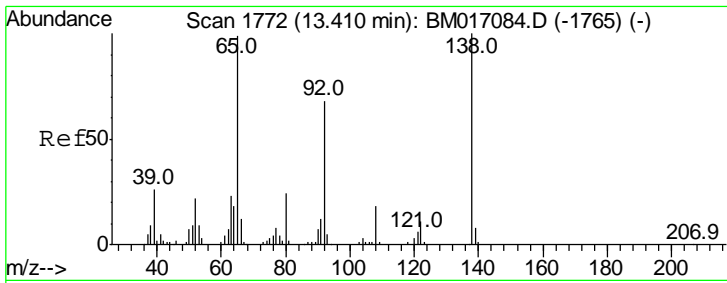
Tgt Ion	Resp	Lower	Upper
154	100		
153	39.9	32.0	48.0
76	12.2	10.2	15.2



#42
 2-Chloronaphthalene
 Concen: 20.215 ng/ul
 RT: 13.20 min Scan# 1736
 Delta R.T. 0.00 min
 Lab File: BM017092.D
 Acq: 09 Oct 2018 07:29

Tgt Ion	Resp	Lower	Upper
162	100		
164	33.4	26.9	40.3
127	38.6	30.7	46.1

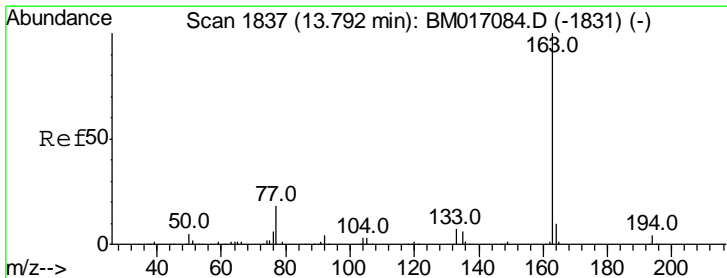
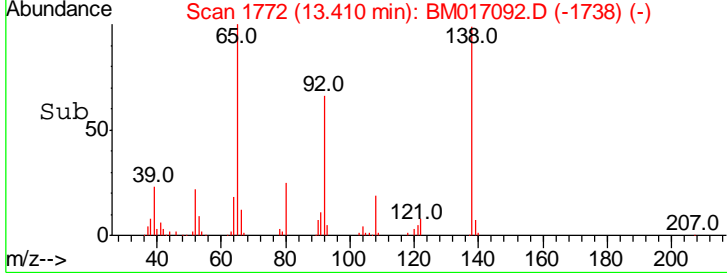
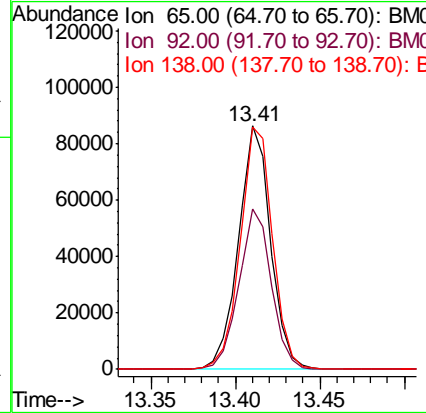
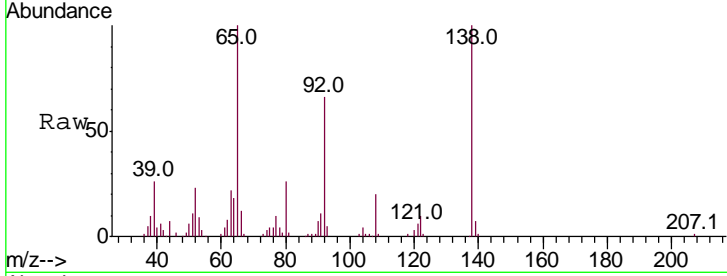




#43
 2-Nitroaniline
 Concen: 16.262 ng/ul
 RT: 13.41 min Scan# 1772
 Delta R.T. 0.00 min
 Lab File: BM017092.D
 Acq: 09 Oct 2018 07:29

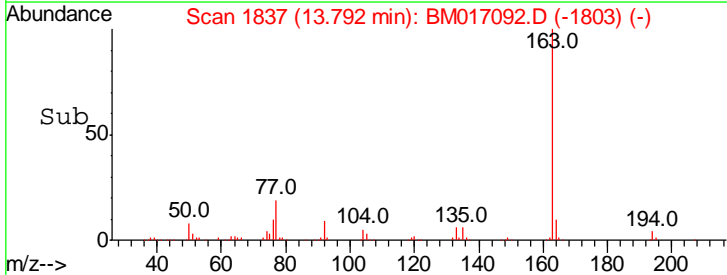
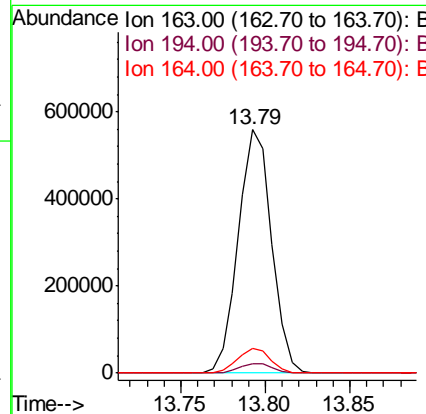
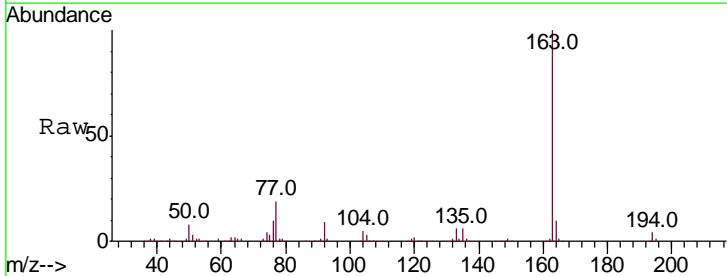
Instrument :
 BNA_M
 ClientSampled :

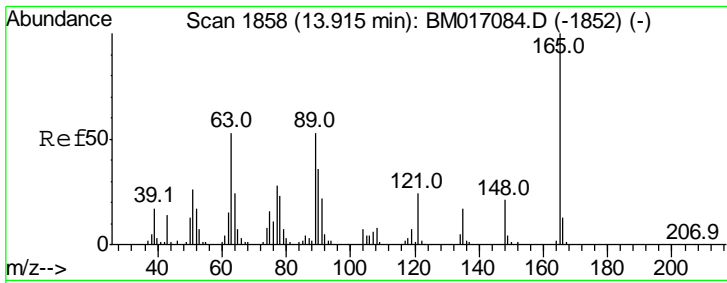
Tgt Ion	Resp	Lower	Upper
65	113981		
92	65.7	55.8	83.8
138	99.8	84.1	126.1



#45
 Dimethylphthalate
 Concen: 19.707 ng/ul
 RT: 13.79 min Scan# 1837
 Delta R.T. 0.00 min
 Lab File: BM017092.D
 Acq: 09 Oct 2018 07:29

Tgt Ion	Resp	Lower	Upper
163	765695		
194	4.1	3.3	4.9
164	10.2	8.0	12.0

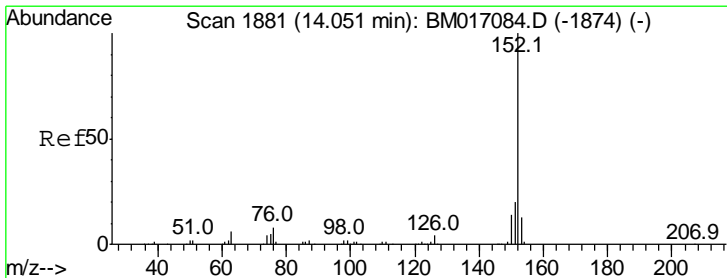
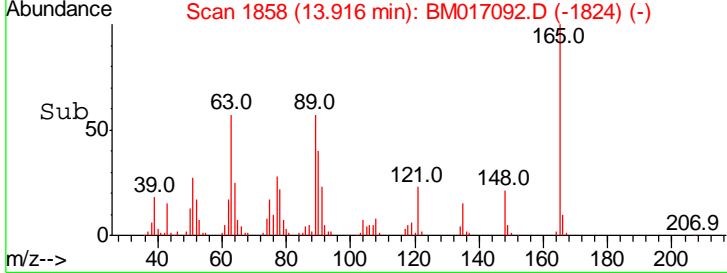
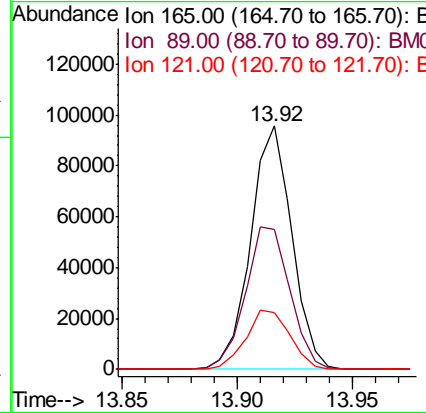
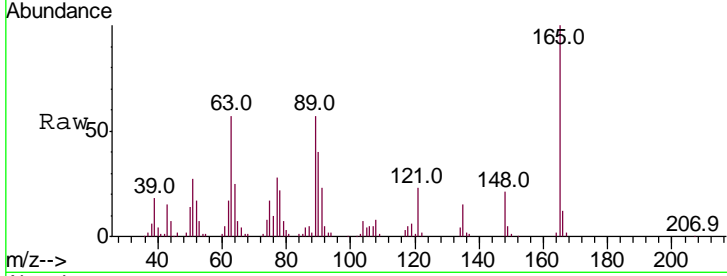




#46
 2,6-Dinitrotoluene
 Concen: 18.253 ng/ul
 RT: 13.92 min Scan# 1858
 Delta R.T. 0.00 min
 Lab File: BM017092.D
 Acq: 09 Oct 2018 07:29

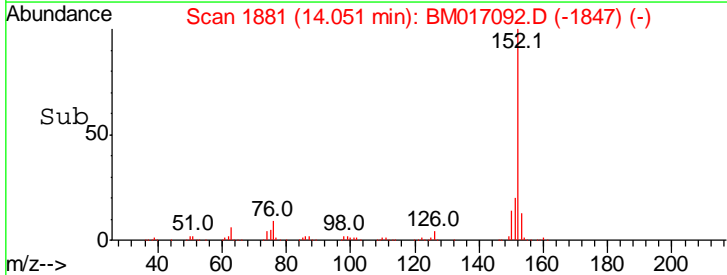
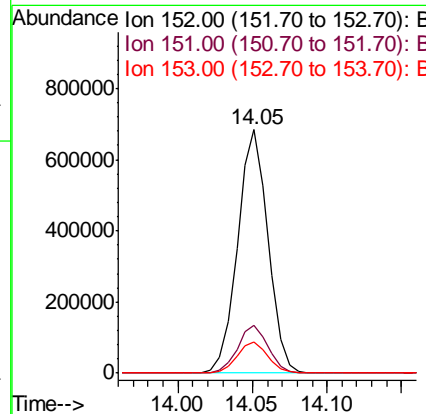
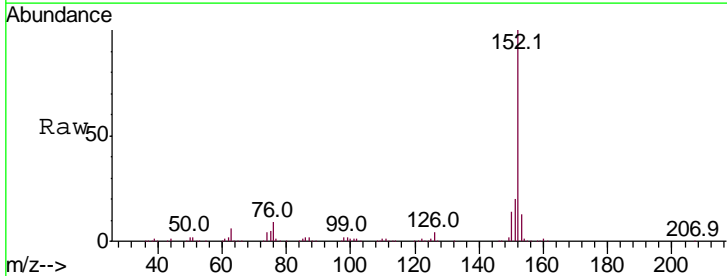
Instrument :
 BNA_M
 ClientSampled :

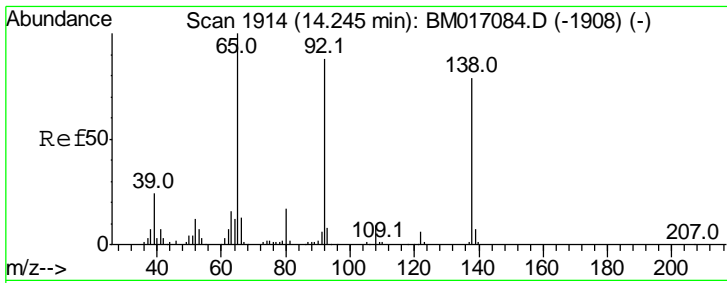
Tgt Ion	Resp	Lower	Upper
165	100		
89	57.3	43.0	64.6
121	23.2	18.0	27.0



#48
 Acenaphthylene
 Concen: 20.151 ng/ul
 RT: 14.05 min Scan# 1881
 Delta R.T. 0.00 min
 Lab File: BM017092.D
 Acq: 09 Oct 2018 07:29

Tgt Ion	Resp	Lower	Upper
152	100		
151	19.8	15.7	23.5
153	13.0	10.2	15.4

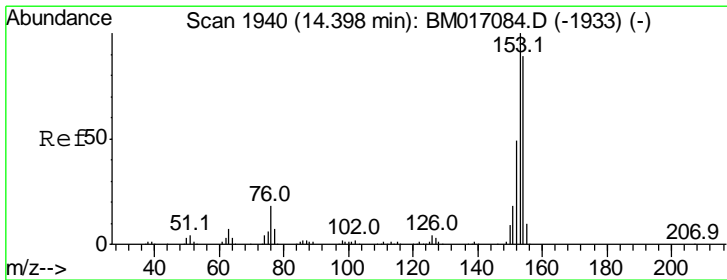
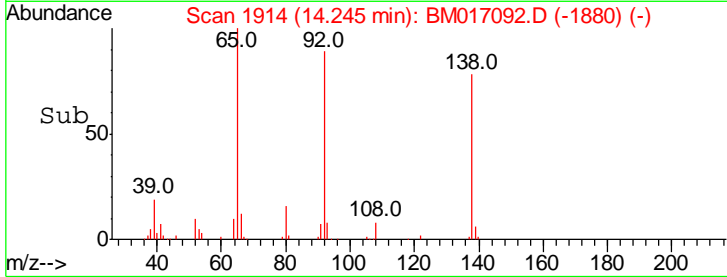
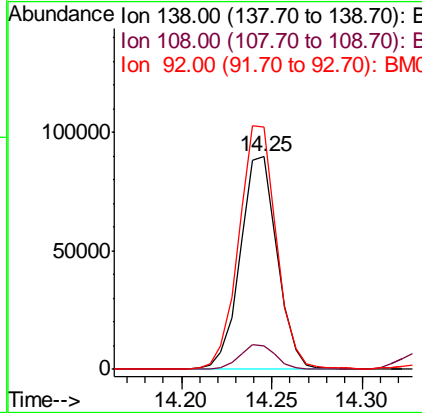
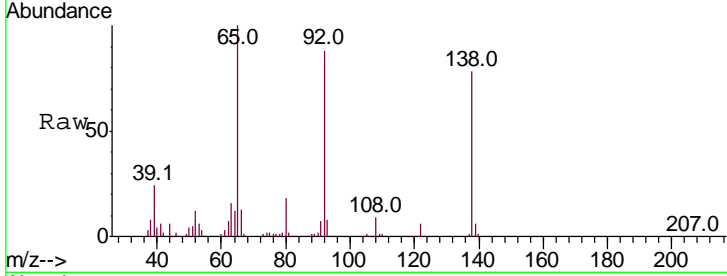




#49
 3-Nitroaniline
 Concen: 17.483 ng/ul
 RT: 14.25 min Scan# 1914
 Delta R.T. 0.00 min
 Lab File: BM017092.D
 Acq: 09 Oct 2018 07:29

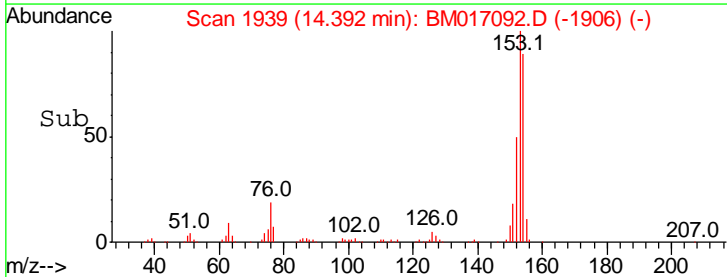
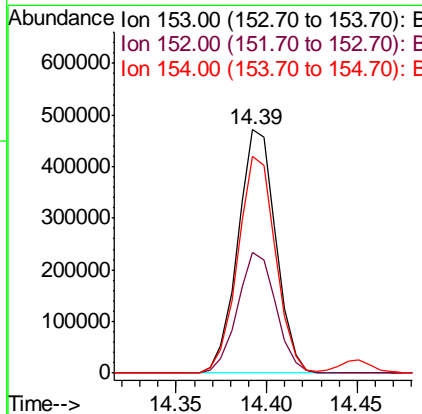
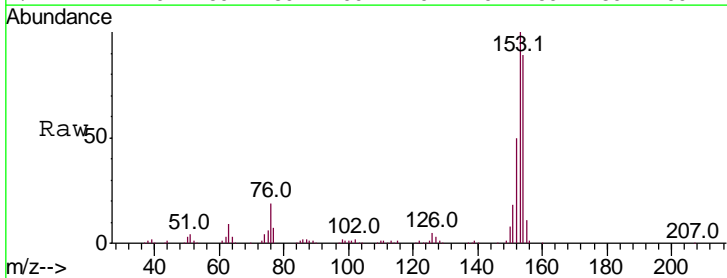
Instrument :
 BNA_M
 ClientSampled :

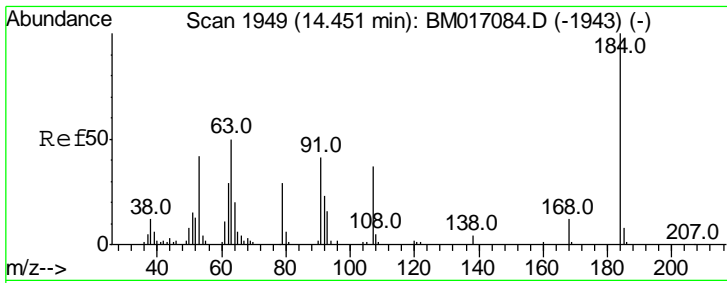
Tgt Ion	Resp	Lower	Upper
138	127197		
108	11.1	9.6	14.4
92	114.0	88.5	132.7



#50
 Acenaphthene
 Concen: 20.072 ng/ul
 RT: 14.39 min Scan# 1939
 Delta R.T. -0.01 min
 Lab File: BM017092.D
 Acq: 09 Oct 2018 07:29

Tgt Ion	Resp	Lower	Upper
153	685131		
152	49.8	38.3	57.5
154	88.9	71.0	106.6

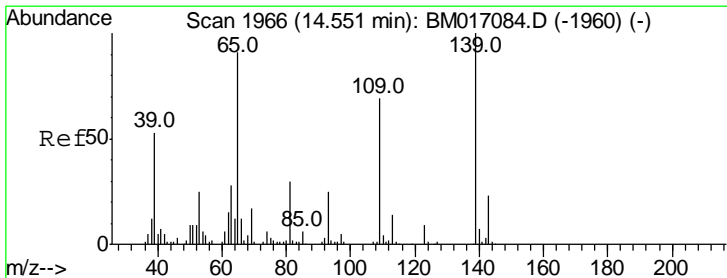
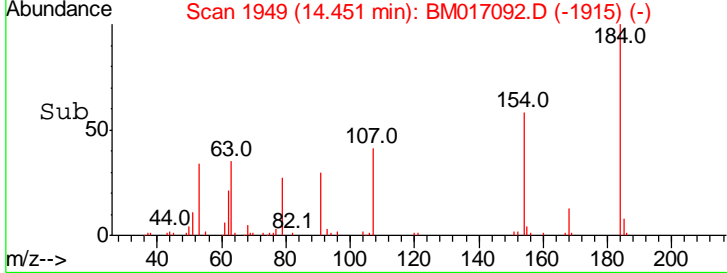
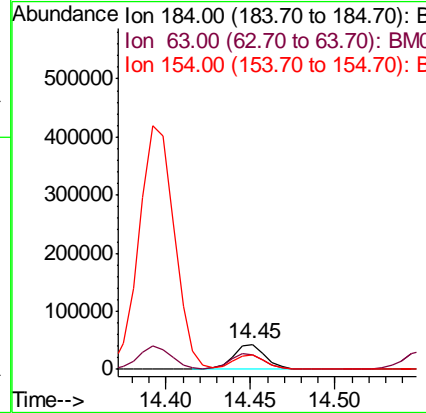
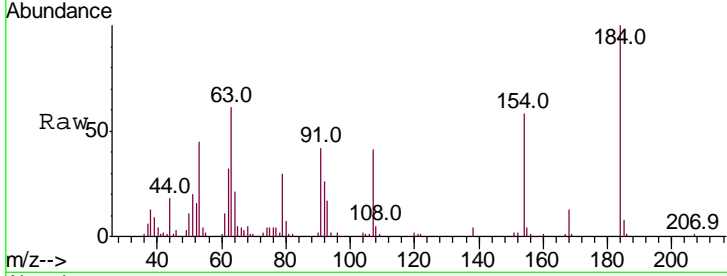




#51
 2,4-Dinitrophenol
 Concen: 13.634 ng/ul
 RT: 14.45 min Scan# 1949
 Delta R.T. 0.00 min
 Lab File: BM017092.D
 Acq: 09 Oct 2018 07:29

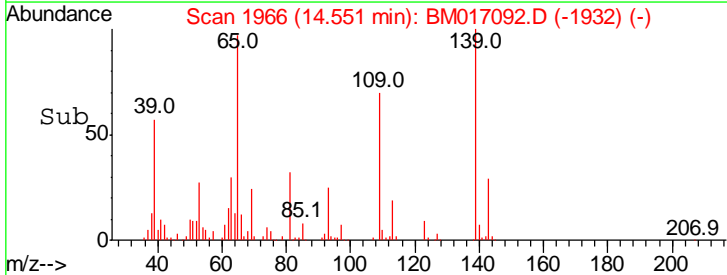
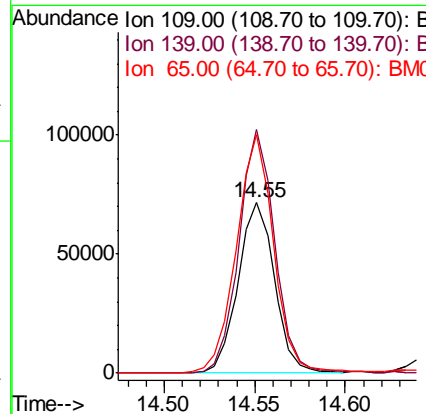
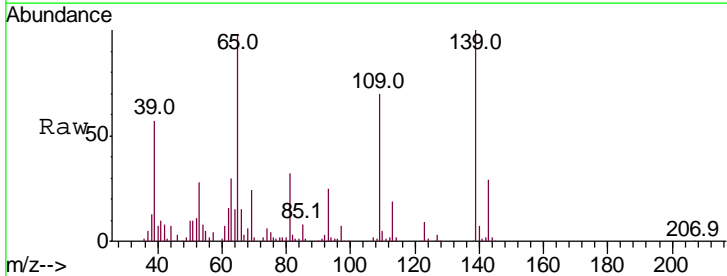
Instrument :
 BNA_M
 ClientSampled :

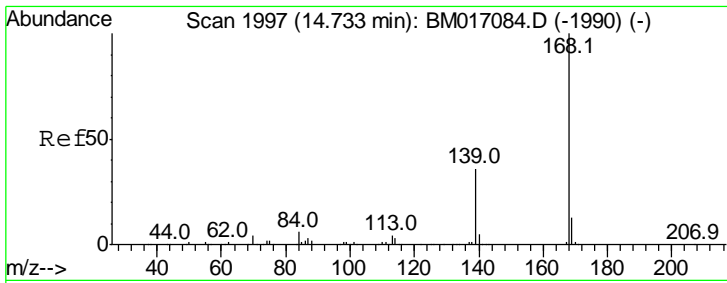
Tgt Ion	Resp	Lower	Upper
184	100		
63	60.9	52.2	78.2
154	58.5	47.6	71.4



#53
 4-Nitrophenol
 Concen: 18.699 ng/ul
 RT: 14.55 min Scan# 1966
 Delta R.T. 0.00 min
 Lab File: BM017092.D
 Acq: 09 Oct 2018 07:29

Tgt Ion	Resp	Lower	Upper
109	100		
139	143.0	114.1	171.1
65	140.2	109.8	164.6

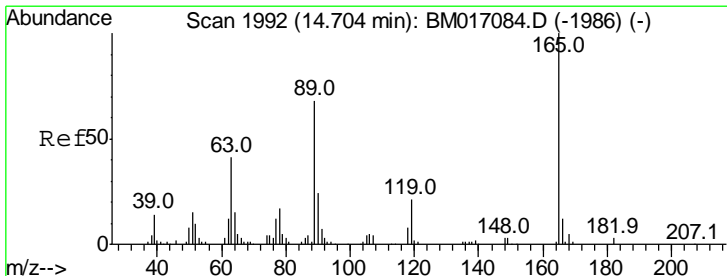
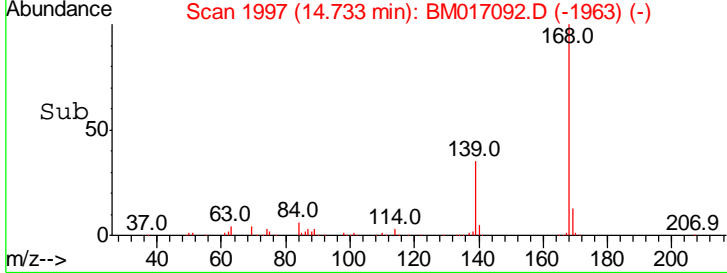
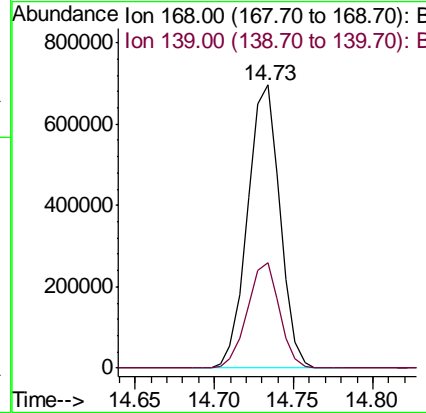
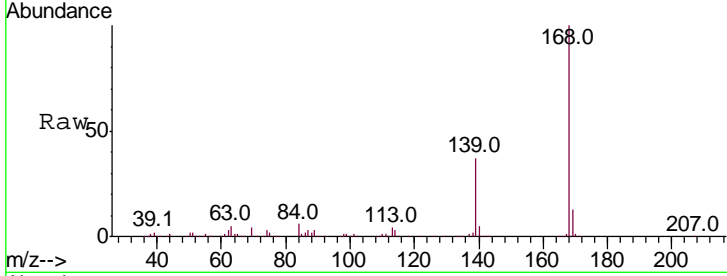




#54
 Dibenzofuran
 Concen: 20.448 ng/ul
 RT: 14.73 min Scan# 1997
 Delta R.T. 0.00 min
 Lab File: BM017092.D
 Acq: 09 Oct 2018 07:29

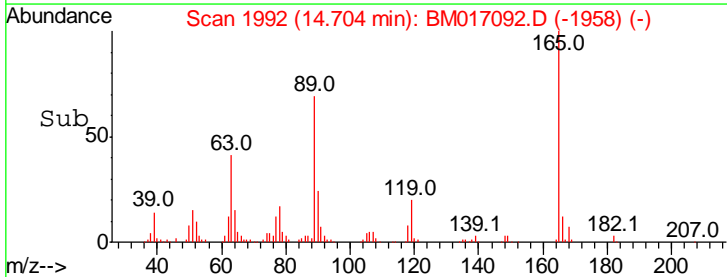
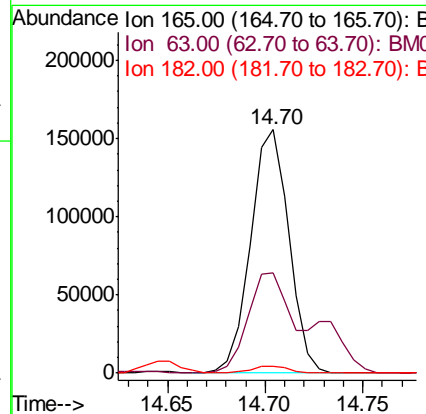
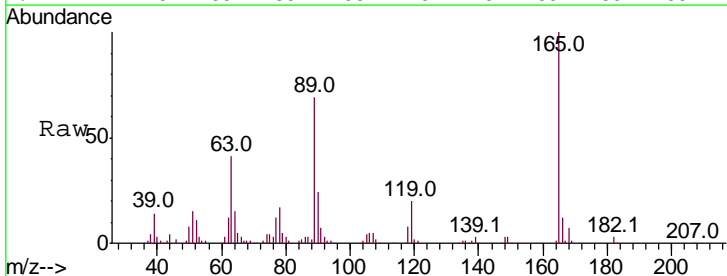
Instrument :
 BNA_M
 ClientSampled :

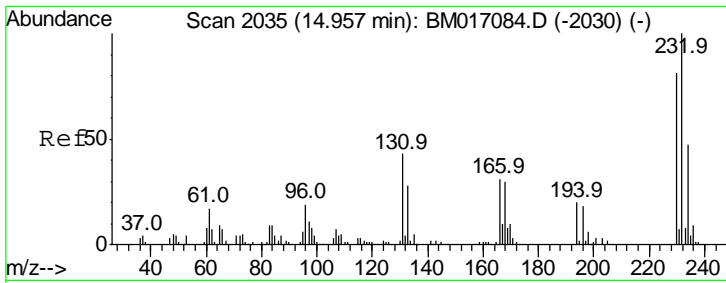
Tgt Ion:168 Resp: 985561
 Ion Ratio Lower Upper
 168 100
 139 37.1 29.8 44.6



#55
 2,4-Dinitrotoluene
 Concen: 19.946 ng/ul
 RT: 14.70 min Scan# 1992
 Delta R.T. 0.00 min
 Lab File: BM017092.D
 Acq: 09 Oct 2018 07:29

Tgt Ion:165 Resp: 211110
 Ion Ratio Lower Upper
 165 100
 63 41.4 32.6 48.8
 182 2.9 2.3 3.5

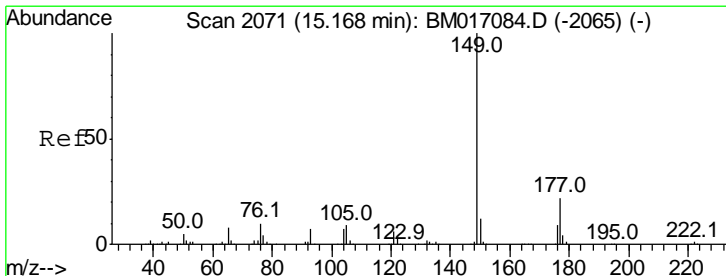
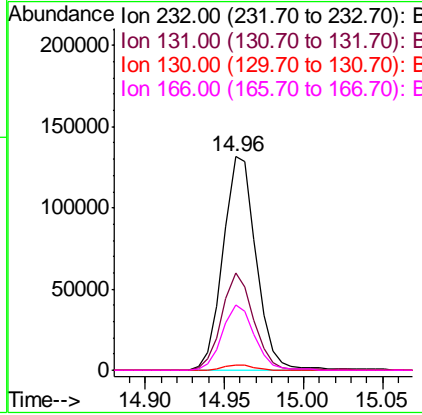
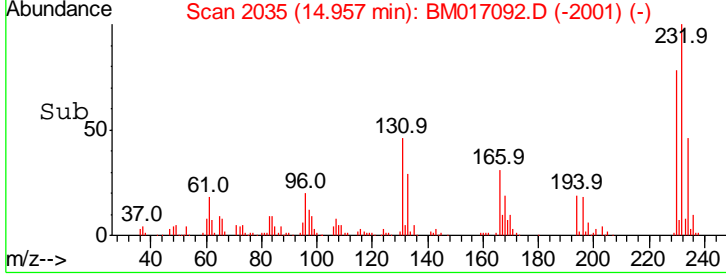
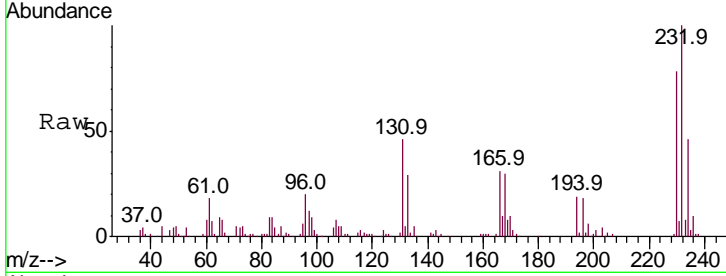




#56
 2,3,4,6-Tetrachlorophenol
 Concen: 19.350 ng/ul
 RT: 14.96 min Scan# 2035
 Delta R.T. 0.00 min
 Lab File: BM017092.D
 Acq: 09 Oct 2018 07:29

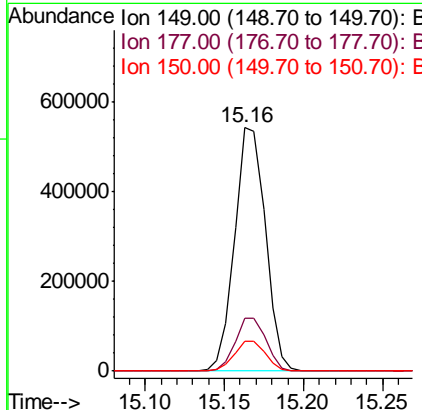
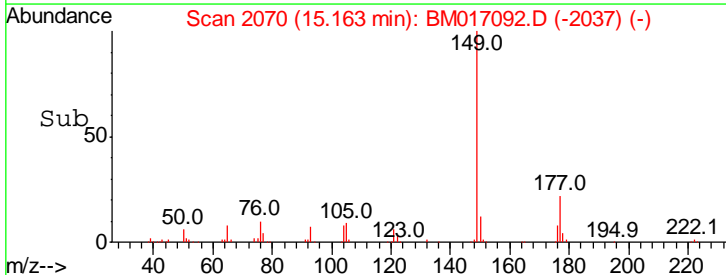
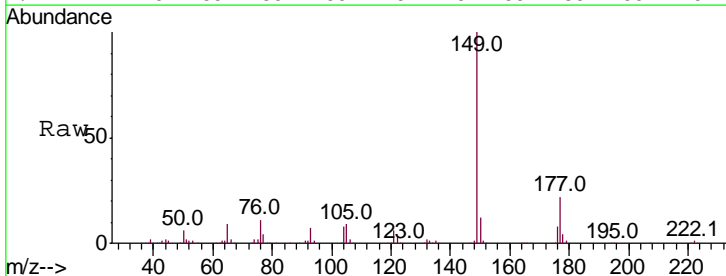
Instrument :
 BNA_M
 ClientSampled :

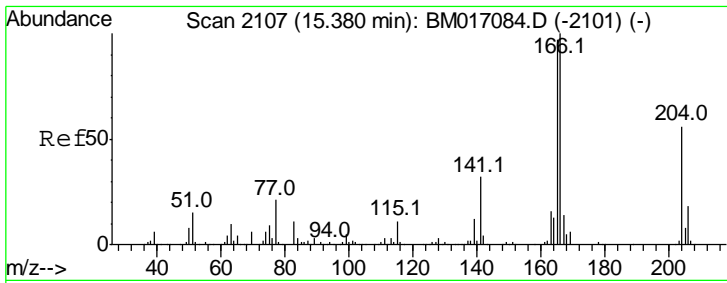
Tgt Ion	Resp	Lower	Upper
232	100		
131	45.5	33.8	50.6
130	2.5	1.7	2.5
166	30.9	24.6	37.0



#57
 Diethylphthalate
 Concen: 19.293 ng/ul
 RT: 15.16 min Scan# 2070
 Delta R.T. -0.01 min
 Lab File: BM017092.D
 Acq: 09 Oct 2018 07:29

Tgt Ion	Resp	Lower	Upper
149	100		
177	21.9	17.8	26.8
150	12.3	9.4	14.2

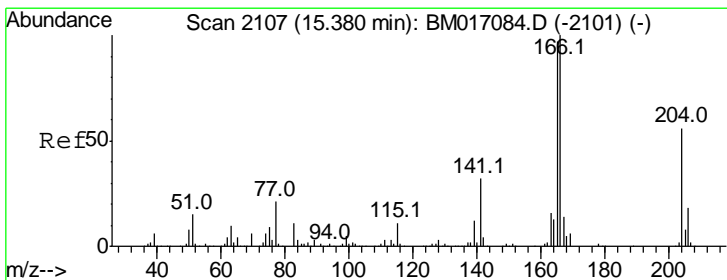
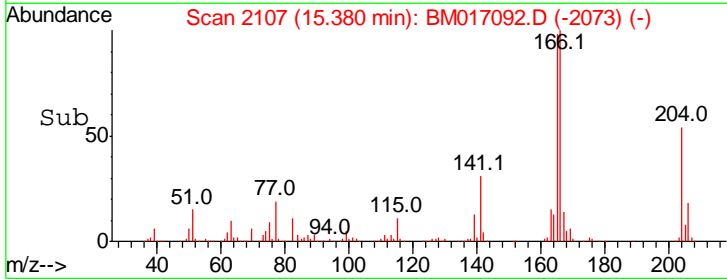
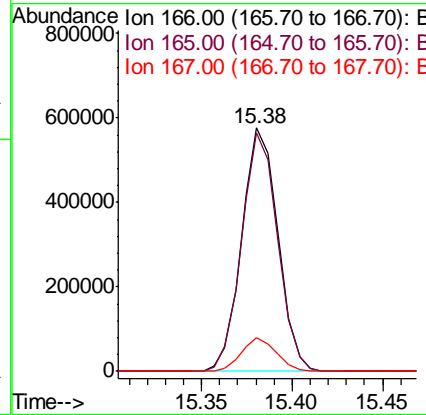
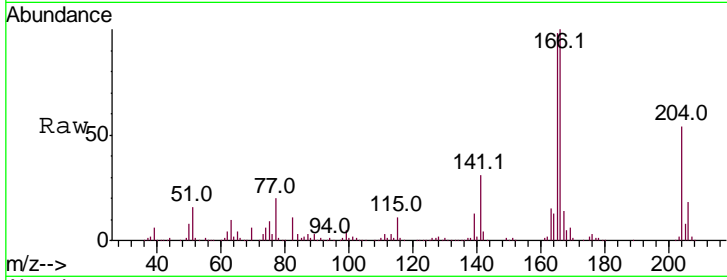




#59
 Fluorene
 Concen: 20.334 ng/ul
 RT: 15.38 min Scan# 2107
 Delta R.T. 0.00 min
 Lab File: BM017092.D
 Acq: 09 Oct 2018 07:29

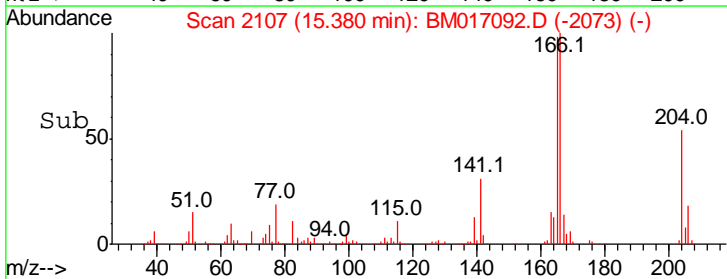
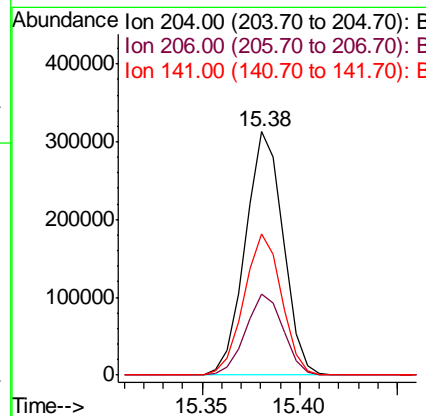
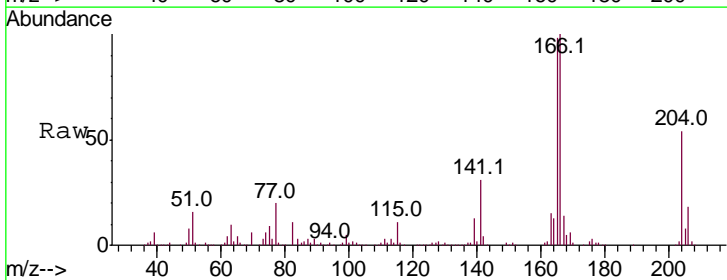
Instrument :
 BNA_M
 ClientSampled :

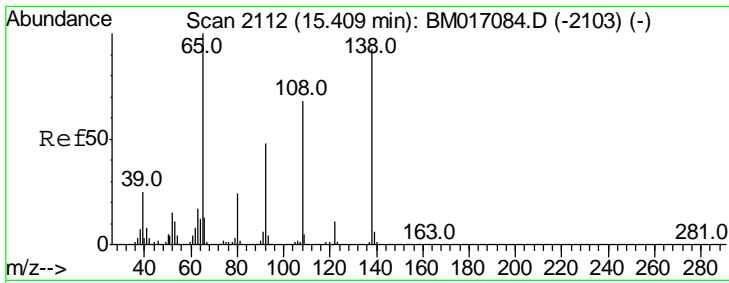
Tgt Ion	Resp	Lower	Upper
166	100		
165	97.9	77.3	115.9
167	13.8	10.7	16.1



#60
 4-Chlorophenyl-phenylether
 Concen: 20.532 ng/ul
 RT: 15.38 min Scan# 2107
 Delta R.T. 0.00 min
 Lab File: BM017092.D
 Acq: 09 Oct 2018 07:29

Tgt Ion	Resp	Lower	Upper
204	100		
206	33.3	25.8	38.8
141	57.9	44.2	66.4

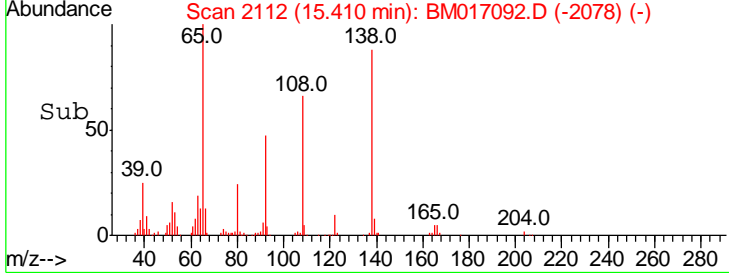
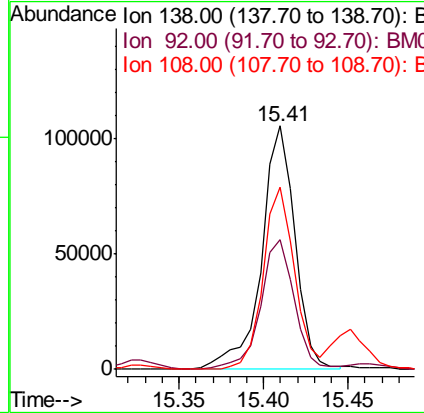
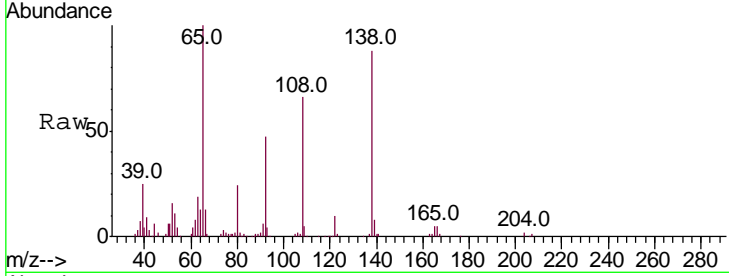




#61
 4-Nitroaniline
 Concen: 16.900 ng/ul
 RT: 15.41 min Scan# 2112
 Delta R.T. 0.00 min
 Lab File: BM017092.D
 Acq: 09 Oct 2018 07:29

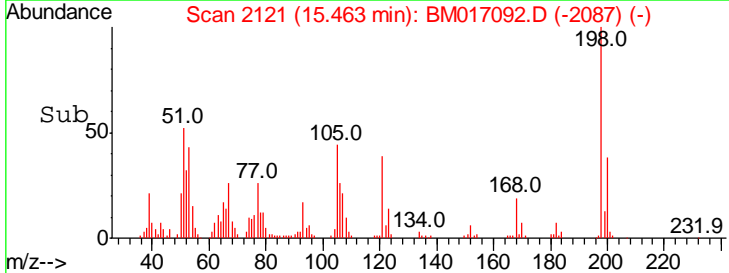
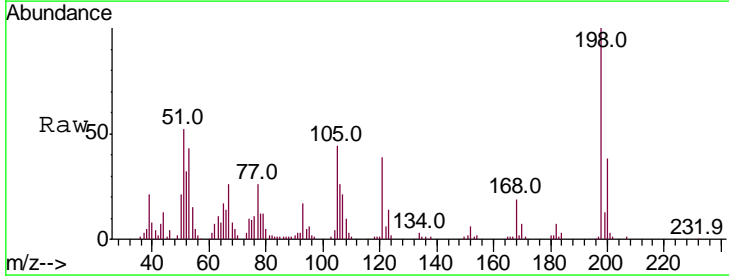
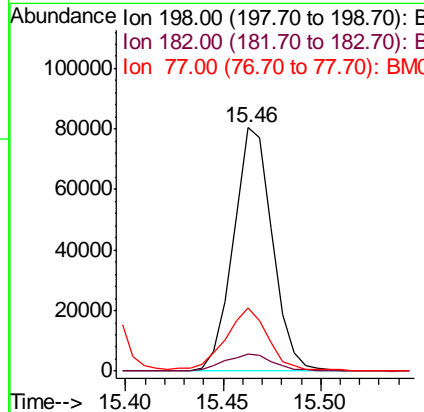
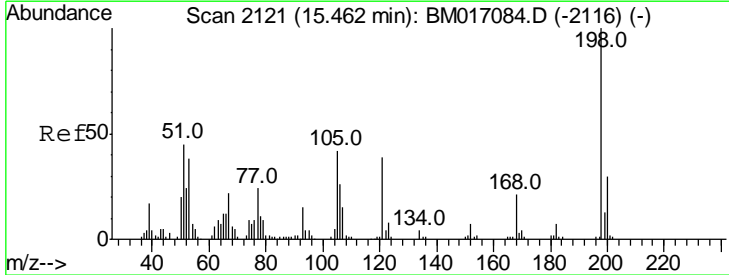
Instrument :
 BNA_M
 ClientSampled :

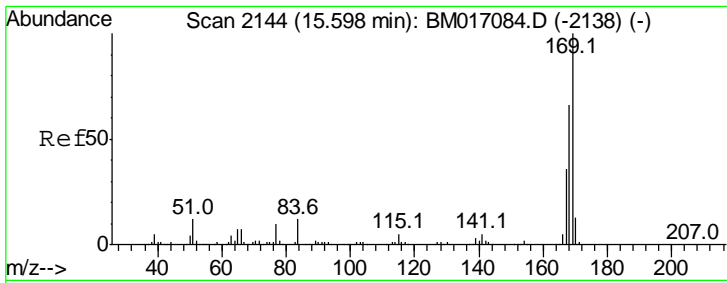
Tgt Ion	Resp	Lower	Upper
138	145120		
92	53.3	41.4	62.0
108	74.6	60.0	90.0



#64
 4,6-Dinitro-2-methylphenol
 Concen: 15.889 ng/ul
 RT: 15.46 min Scan# 2121
 Delta R.T. 0.00 min
 Lab File: BM017092.D
 Acq: 09 Oct 2018 07:29

Tgt Ion	Resp	Lower	Upper
198	110891		
182	6.8	5.1	7.7
77	25.9	16.9	25.3#

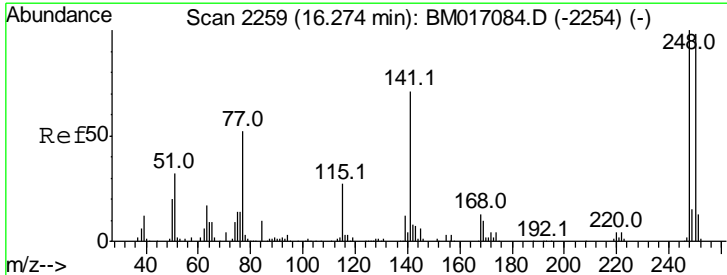
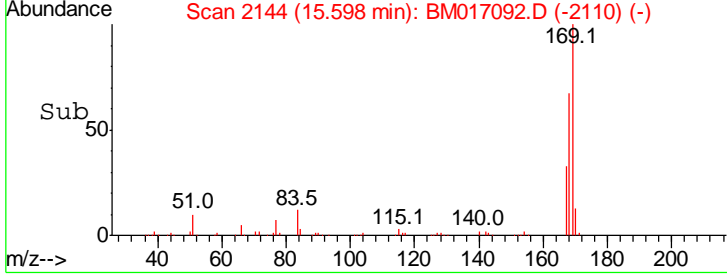
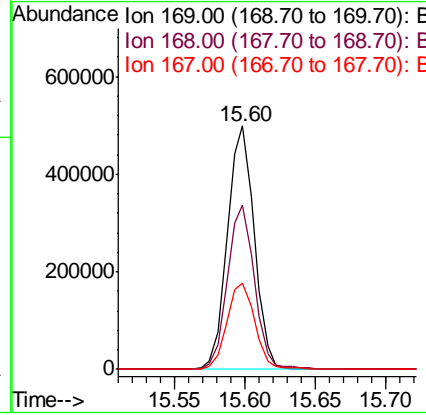
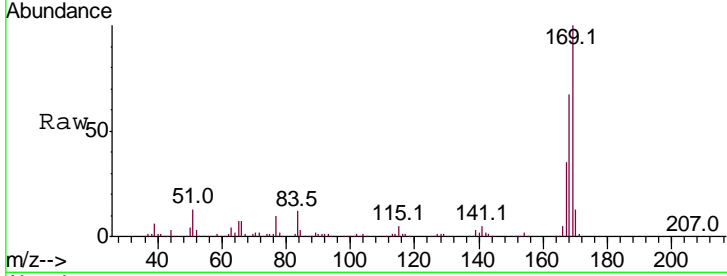




#65
 N-Nitrosodiphenylamine
 Concen: 19.802 ng/ul
 RT: 15.60 min Scan# 2144
 Delta R.T. 0.00 min
 Lab File: BM017092.D
 Acq: 09 Oct 2018 07:29

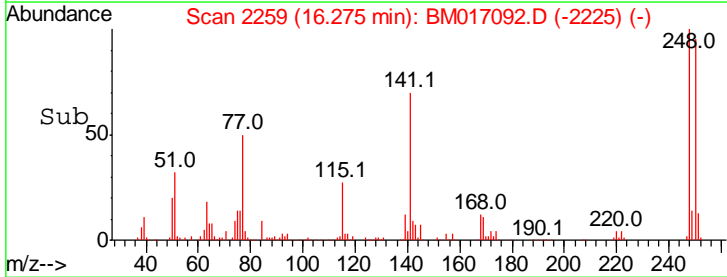
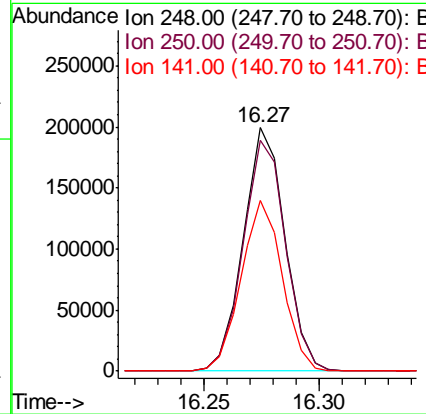
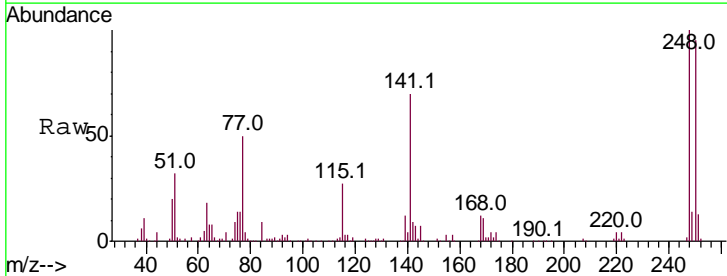
Instrument :
 BNA_M
 ClientSampled :

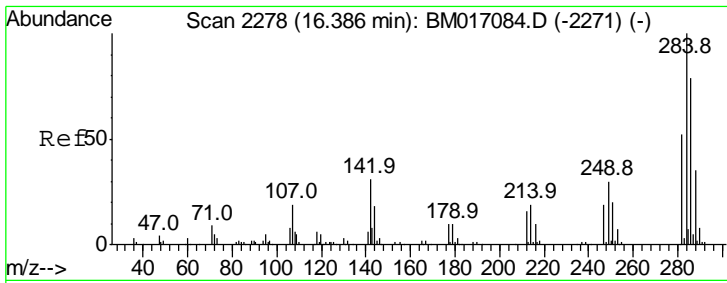
Tgt Ion	Resp	Lower	Upper
169	100		
168	67.2	53.2	79.8
167	35.5	28.8	43.2



#66
 4-Bromophenyl-phenylether
 Concen: 19.943 ng/ul
 RT: 16.27 min Scan# 2259
 Delta R.T. 0.00 min
 Lab File: BM017092.D
 Acq: 09 Oct 2018 07:29

Tgt Ion	Resp	Lower	Upper
248	100		
250	94.8	77.1	115.7
141	70.3	52.2	78.4

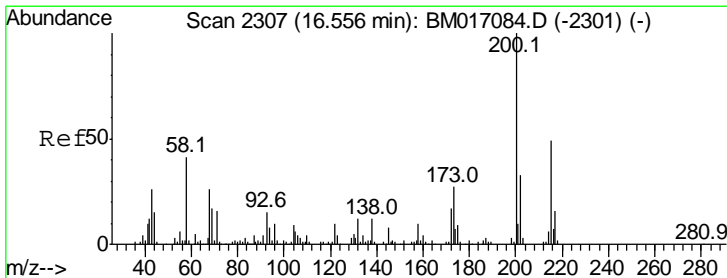
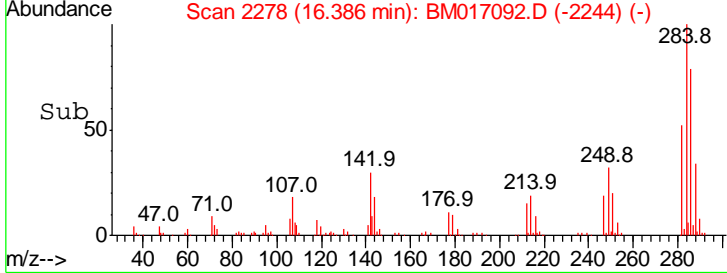
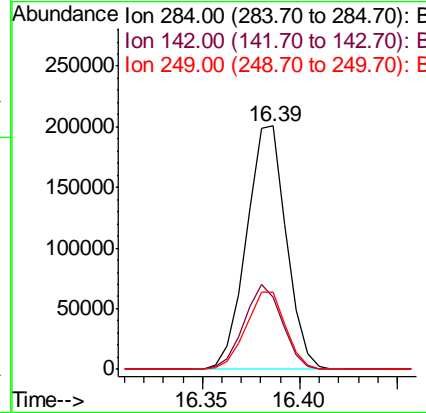
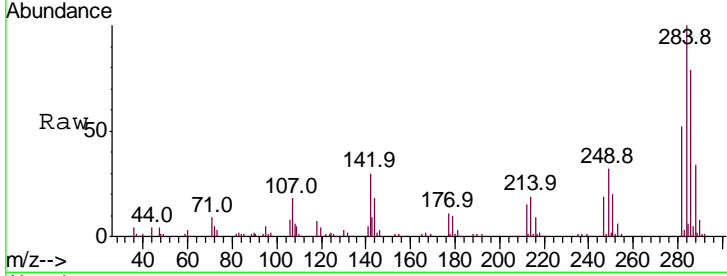




#67
 Hexachlorobenzene
 Concen: 20.007 ng/ul
 RT: 16.39 min Scan# 2278
 Delta R.T. 0.00 min
 Lab File: BM017092.D
 Acq: 09 Oct 2018 07:29

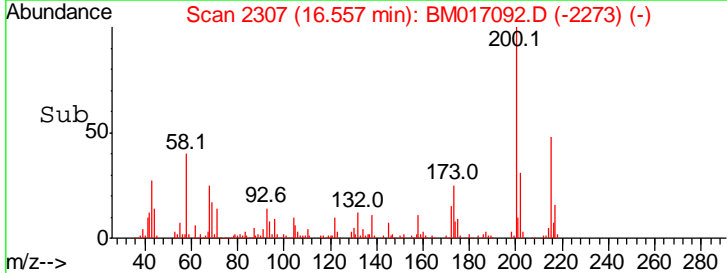
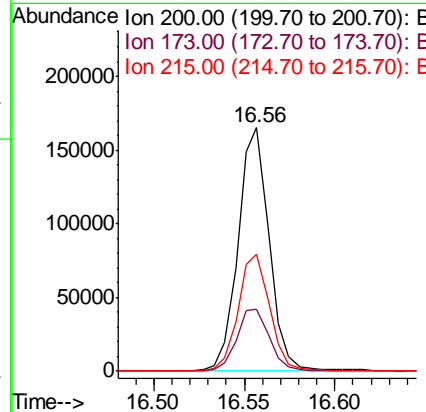
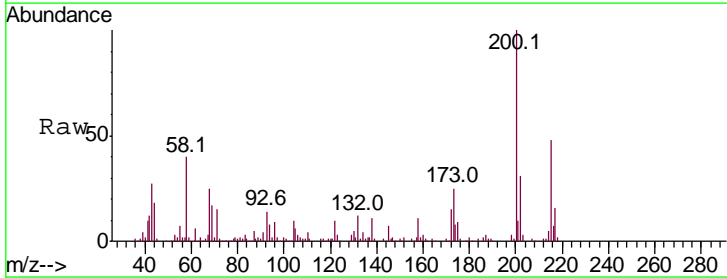
Instrument :
 BNA_M
 ClientSampled :

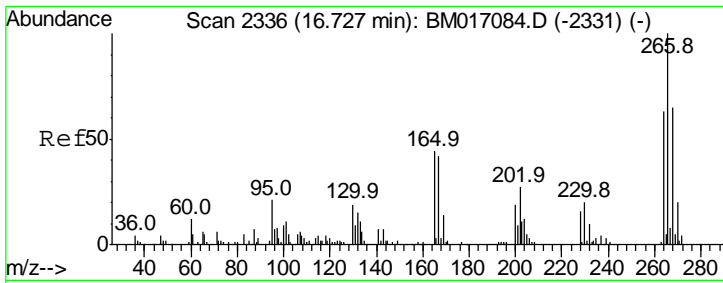
Tgt Ion	Resp	Lower	Upper
284	100		
142	29.5	25.8	38.6
249	31.8	25.4	38.2



#68
 Atrazine
 Concen: 17.109 ng/ul
 RT: 16.56 min Scan# 2307
 Delta R.T. 0.00 min
 Lab File: BM017092.D
 Acq: 09 Oct 2018 07:29

Tgt Ion	Resp	Lower	Upper
200	100		
173	25.4	21.0	31.4
215	48.1	39.8	59.8

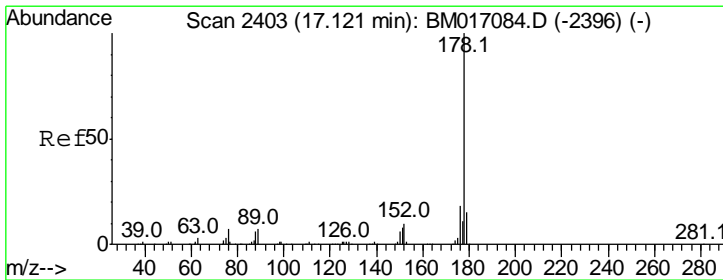
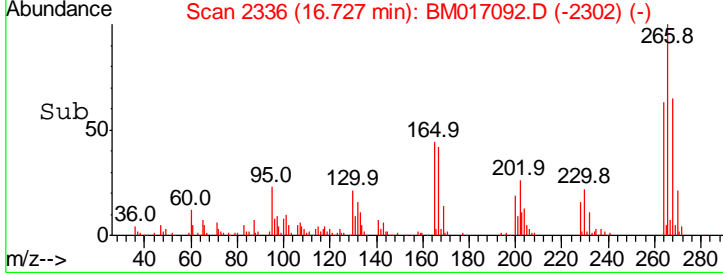
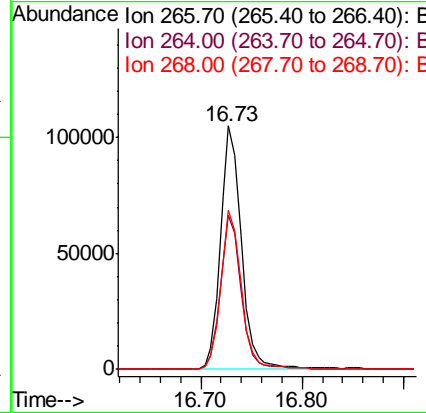
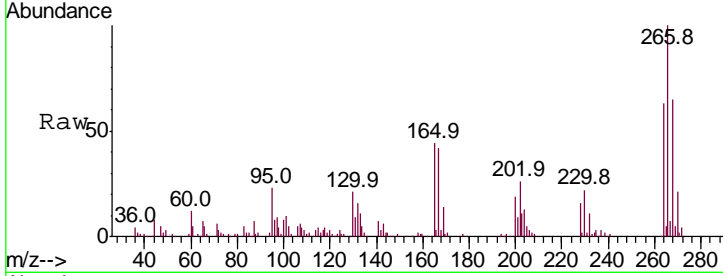




#69
 Pentachlorophenol
 Concen: 17.779 ng/ul
 RT: 16.73 min Scan# 2336
 Delta R.T. 0.00 min
 Lab File: BM017092.D
 Acq: 09 Oct 2018 07:29

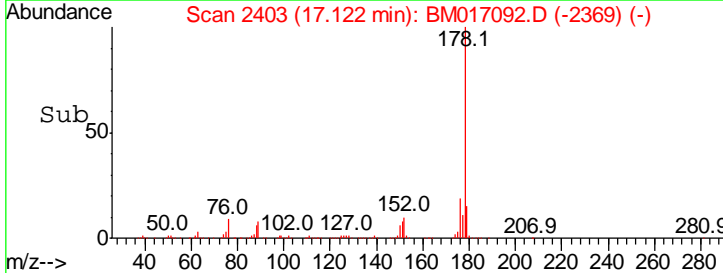
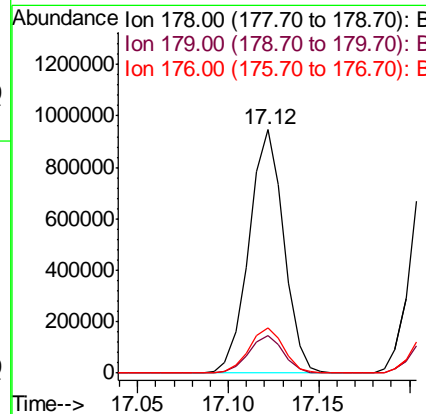
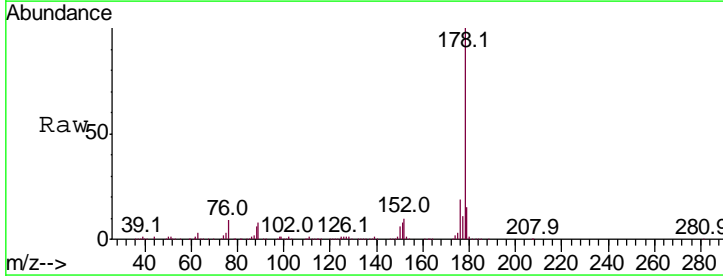
Instrument :
 BNA_M
 ClientSampled :

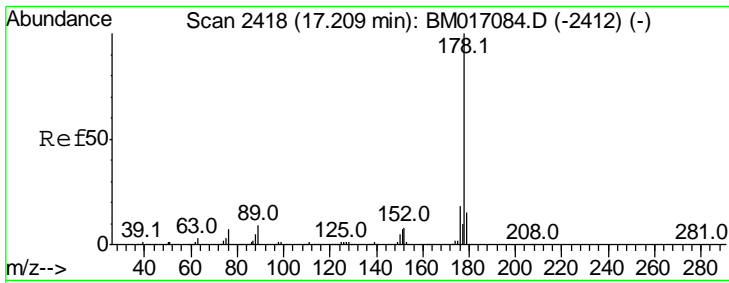
Tgt Ion	Resp	Lower	Upper
266	151818		
266	100		
264	63.2	50.4	75.6
268	65.1	53.6	80.4



#70
 Phenanthrene
 Concen: 20.138 ng/ul
 RT: 17.12 min Scan# 2403
 Delta R.T. 0.00 min
 Lab File: BM017092.D
 Acq: 09 Oct 2018 07:29

Tgt Ion	Resp	Lower	Upper
178	1260804		
178	100		
179	15.2	12.2	18.2
176	18.5	15.0	22.4



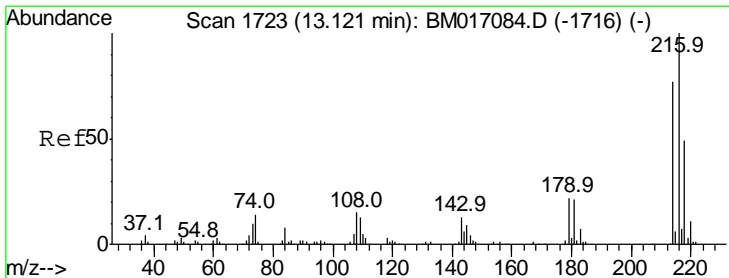
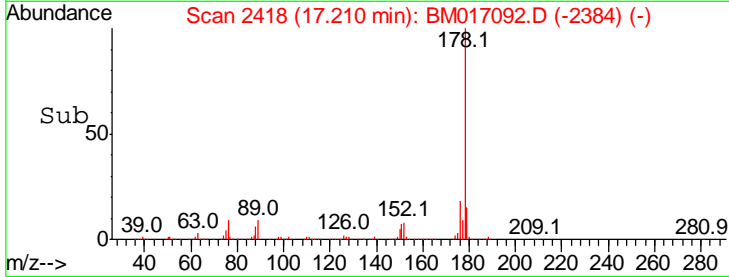
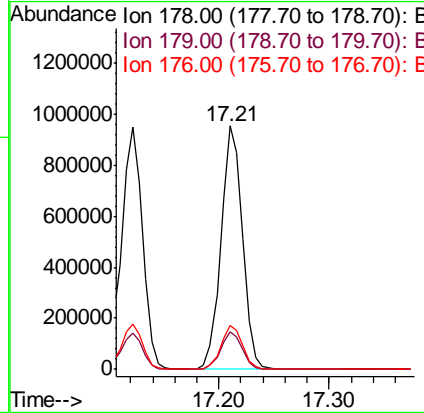
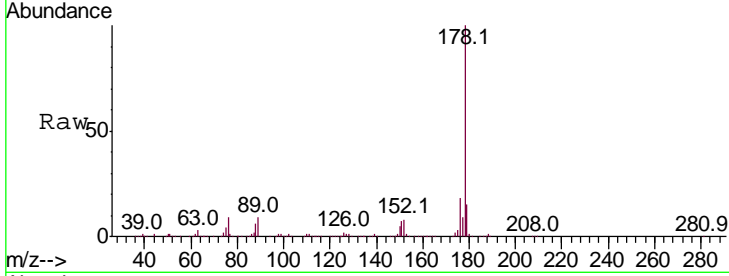


#72
 Anthracene
 Concen: 20.212 ng/ul
 RT: 17.21 min Scan# 2418
 Delta R.T. 0.00 min
 Lab File: BM017092.D
 Acq: 09 Oct 2018 07:29

Instrument :
 BNA_M
 ClientSampled :

Tgt Ion:178 Resp: 1285762

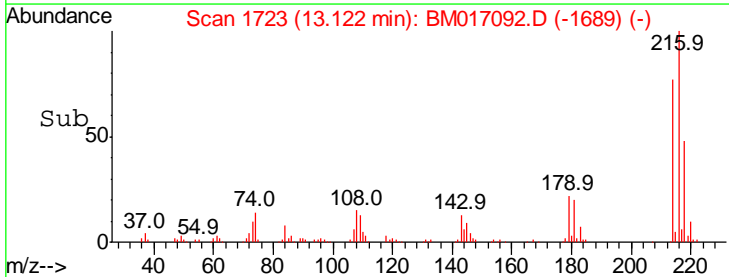
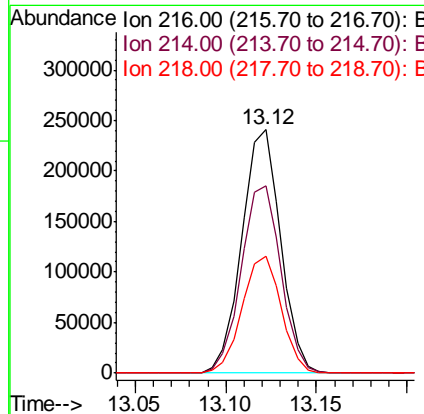
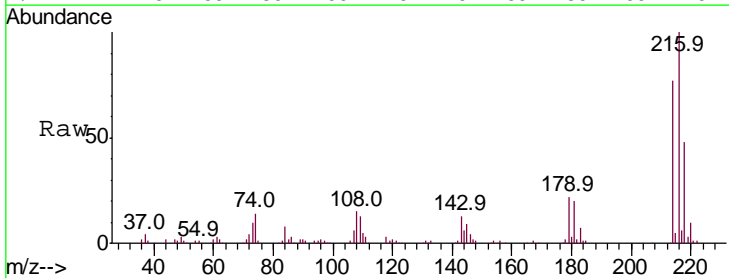
Ion	Ratio	Lower	Upper
178	100		
179	15.3	12.2	18.4
176	18.2	14.6	22.0

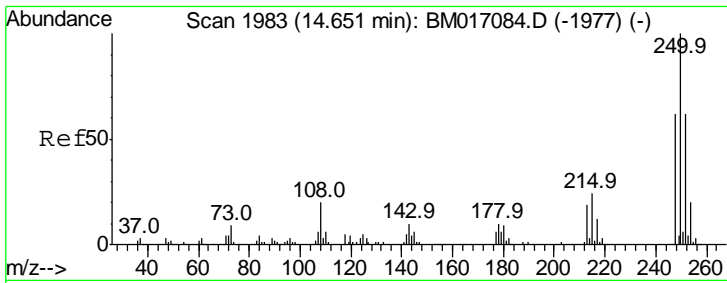


#73
 1,2,3,4-Tetrachlorobenzene
 Concen: 20.146 ng/uL
 RT: 13.12 min Scan# 1723
 Delta R.T. 0.00 min
 Lab File: BM017092.D
 Acq: 09 Oct 2018 07:29

Tgt Ion:216 Resp: 358995

Ion	Ratio	Lower	Upper
216	100		
214	76.8	61.6	92.4
218	48.0	37.8	56.6

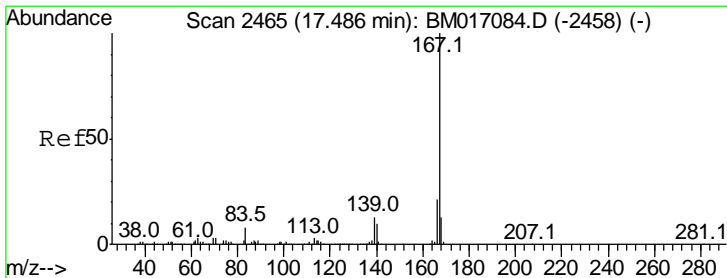
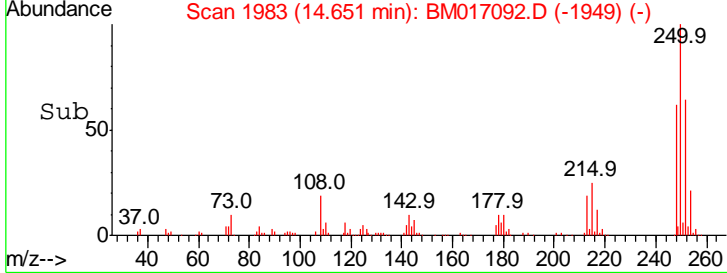
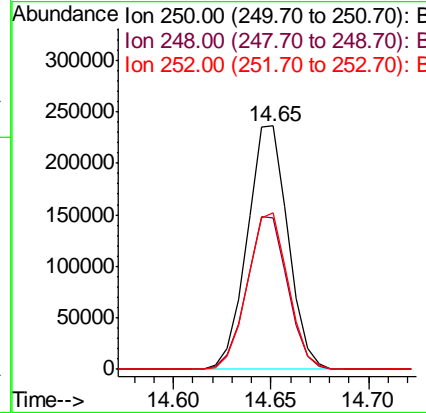
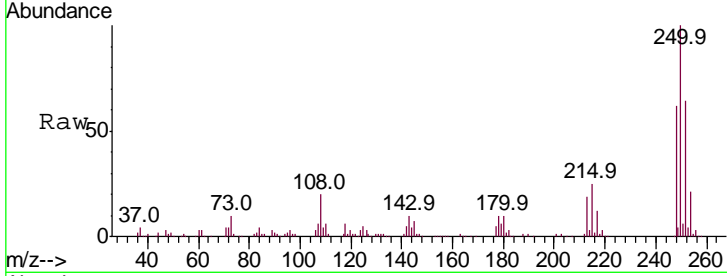




#74
 Pentachlorobenzene
 Concen: 20.363 ng/uL
 RT: 14.65 min Scan# 1983
 Delta R.T. 0.00 min
 Lab File: BM017092.D
 Acq: 09 Oct 2018 07:29

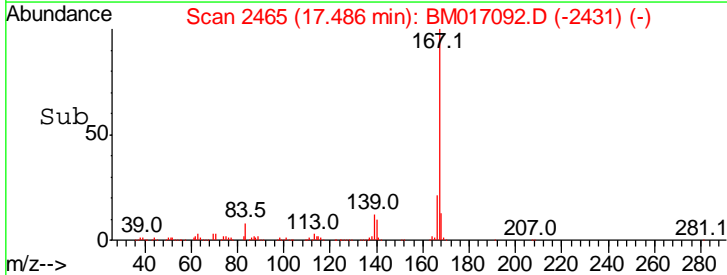
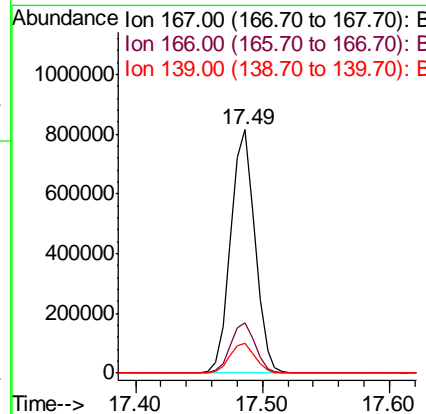
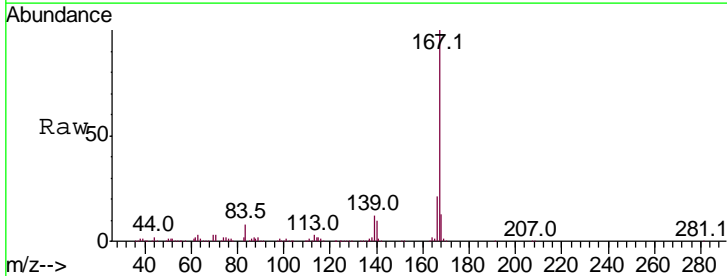
Instrument :
 BNA_M
 ClientSampled :

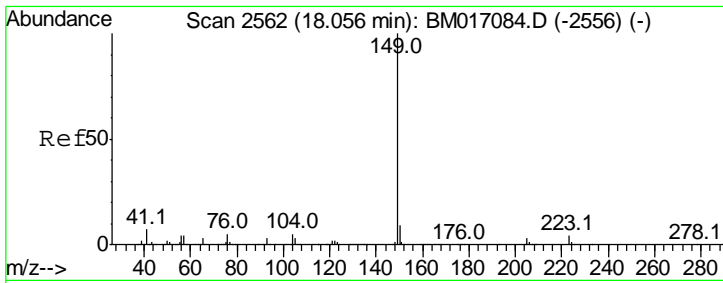
Tgt Ion	Resp	Lower	Upper
250	340897		
250	100		
248	62.2	50.1	75.1
252	64.2	51.2	76.8



#75
 Carbazole
 Concen: 19.592 ng/uL
 RT: 17.49 min Scan# 2465
 Delta R.T. 0.00 min
 Lab File: BM017092.D
 Acq: 09 Oct 2018 07:29

Tgt Ion	Resp	Lower	Upper
167	1078651		
167	100		
166	20.9	17.0	25.4
139	12.4	10.0	15.0



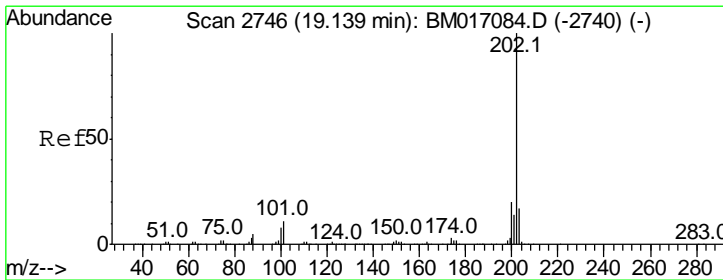
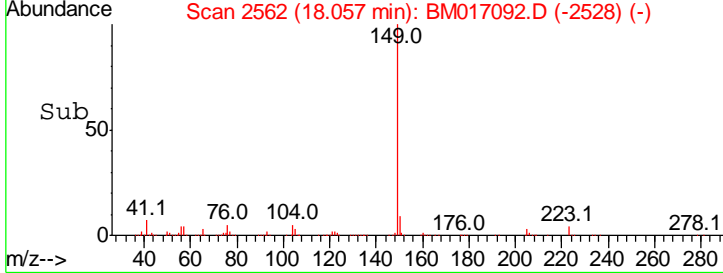
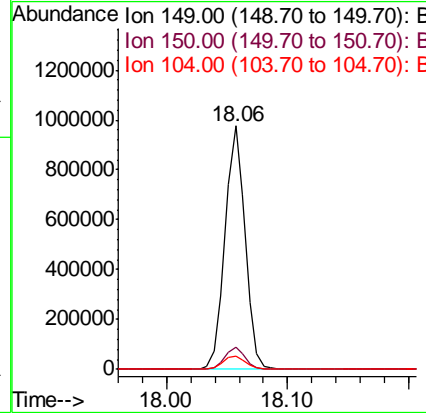
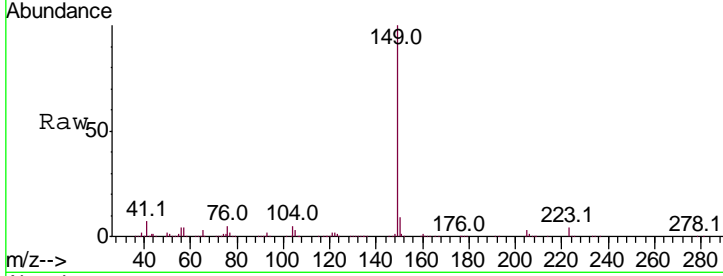


#76
 Di-n-butylphthalate
 Concen: 18.094 ng/ul
 RT: 18.06 min Scan# 2562
 Delta R.T. 0.00 min
 Lab File: BM017092.D
 Acq: 09 Oct 2018 07:29

Instrument :
 BNA_M
 ClientSampled :

Tgt Ion:149 Resp: 1113763

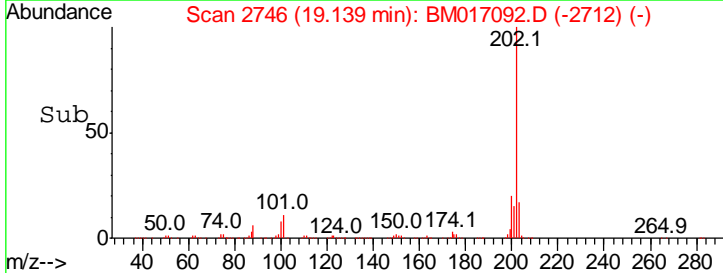
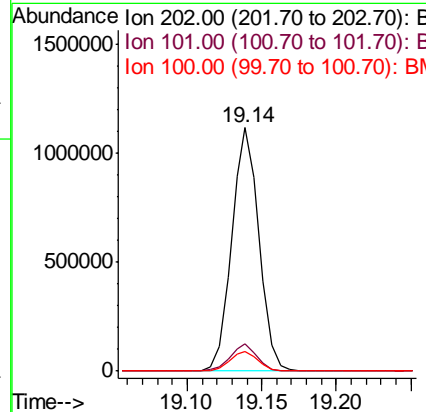
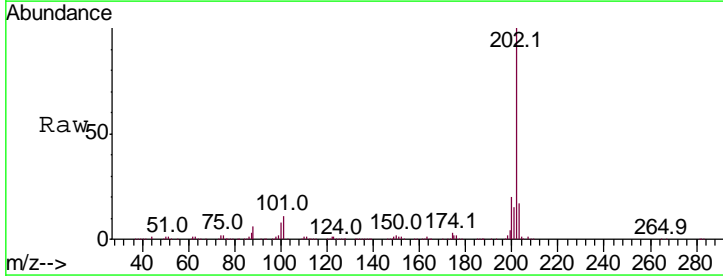
Ion	Ratio	Lower	Upper
149	100		
150	9.0	7.4	11.0
104	5.3	3.8	5.8

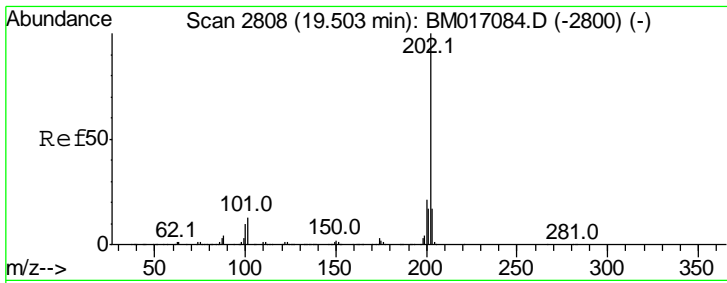


#77
 Fluoranthene
 Concen: 19.630 ng/ul
 RT: 19.14 min Scan# 2746
 Delta R.T. 0.00 min
 Lab File: BM017092.D
 Acq: 09 Oct 2018 07:29

Tgt Ion:202 Resp: 1423553

Ion	Ratio	Lower	Upper
202	100		
101	11.1	8.3	12.5
100	8.0	6.6	9.8

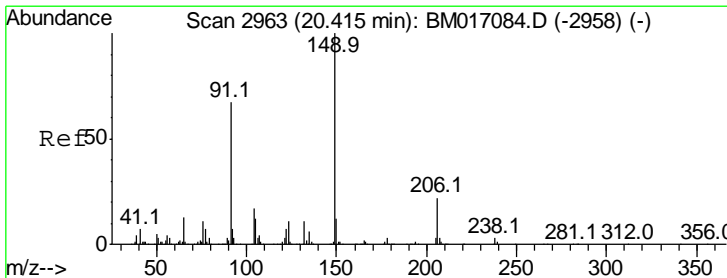
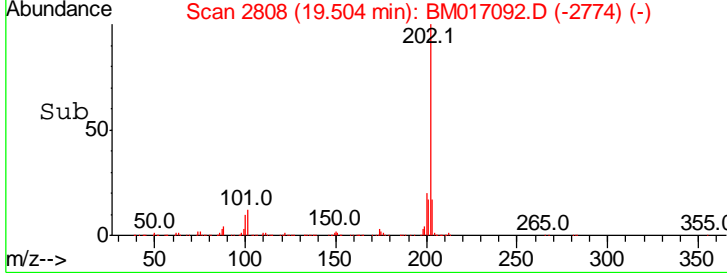
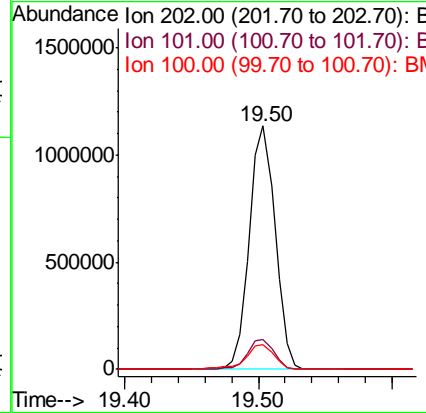
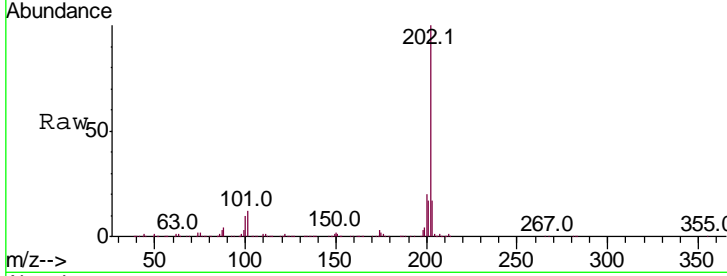




#80
 Pyrene
 Concen: 20.261 ng/ul
 RT: 19.50 min Scan# 2808
 Delta R.T. 0.00 min
 Lab File: BM017092.D
 Acq: 09 Oct 2018 07:29

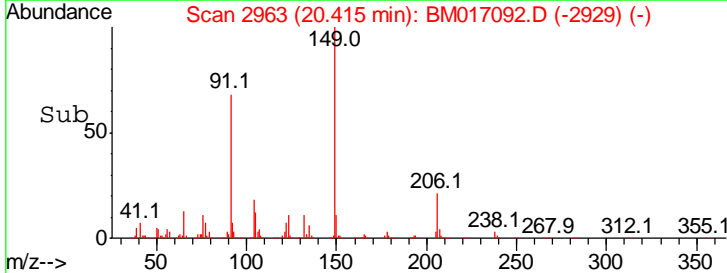
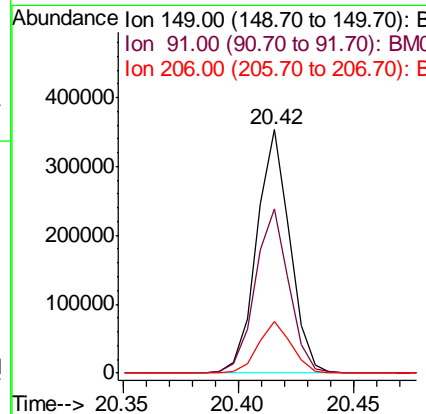
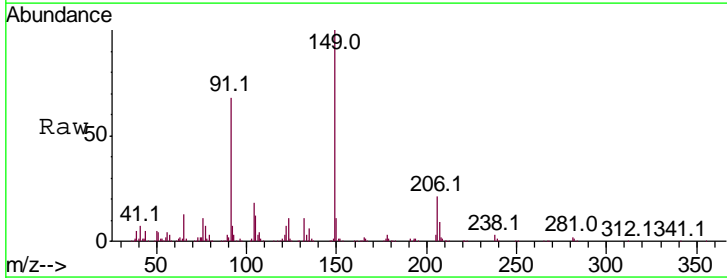
Instrument :
 BNA_M
 ClientSampled :

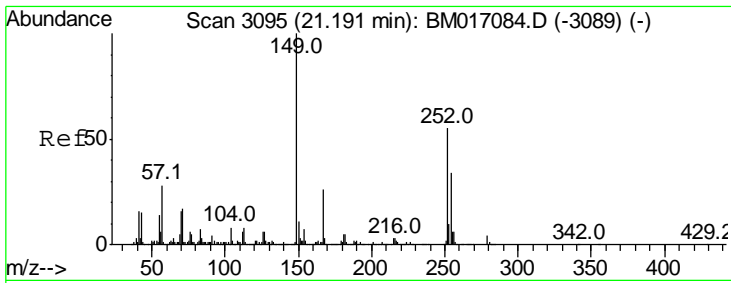
Tgt Ion	Resp	Lower	Upper
202	1513011		
101	12.5	10.8	16.2
100	10.2	8.9	13.3



#81
 Butylbenzylphthalate
 Concen: 13.753 ng/ul
 RT: 20.42 min Scan# 2963
 Delta R.T. 0.00 min
 Lab File: BM017092.D
 Acq: 09 Oct 2018 07:29

Tgt Ion	Resp	Lower	Upper
149	354369		
91	67.6	56.1	84.1
206	21.1	17.2	25.8

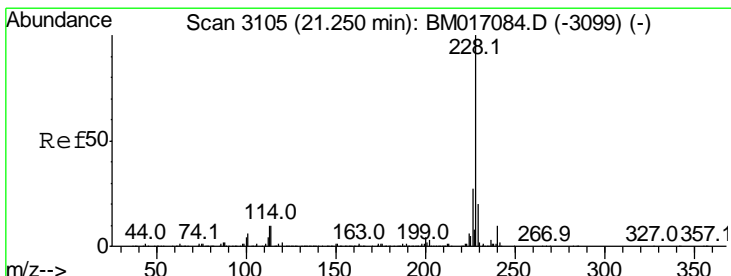
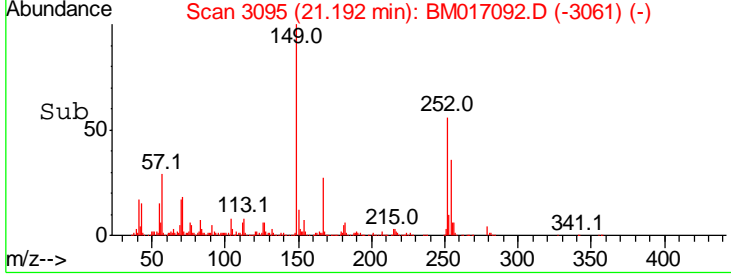
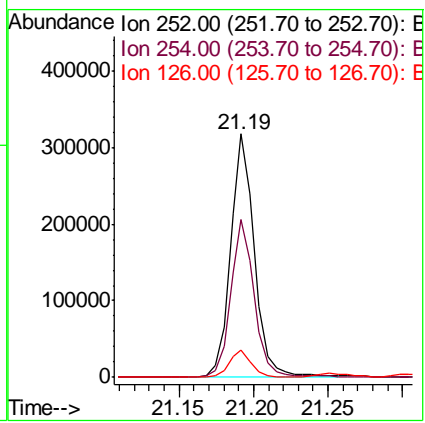
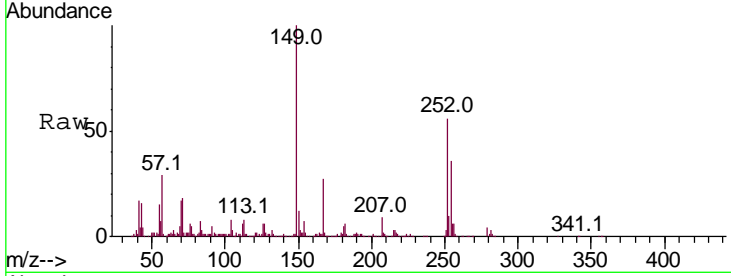




#82
 3,3'-Dichlorobenzidine
 Concen: 15.597 ng/ul
 RT: 21.19 min Scan# 3095
 Delta R.T. 0.00 min
 Lab File: BM017092.D
 Acq: 09 Oct 2018 07:29

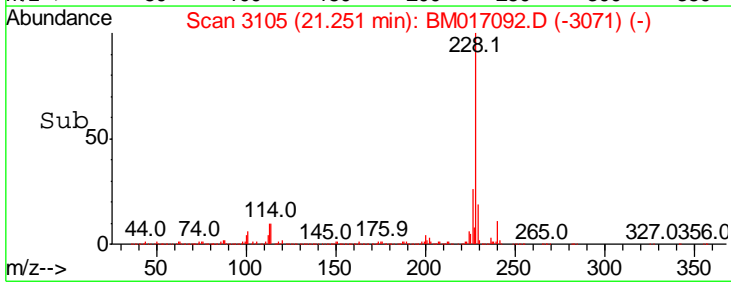
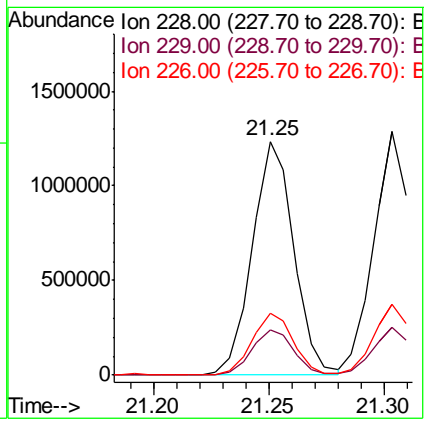
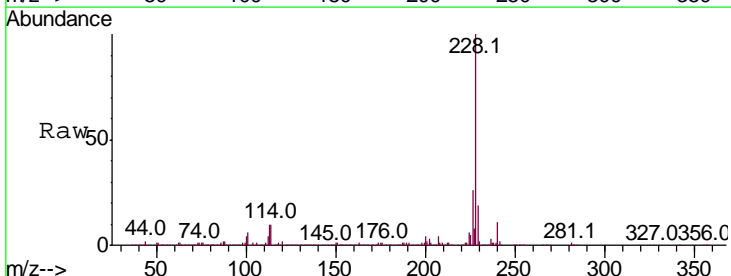
Instrument :
 BNA_M
 ClientSampled :

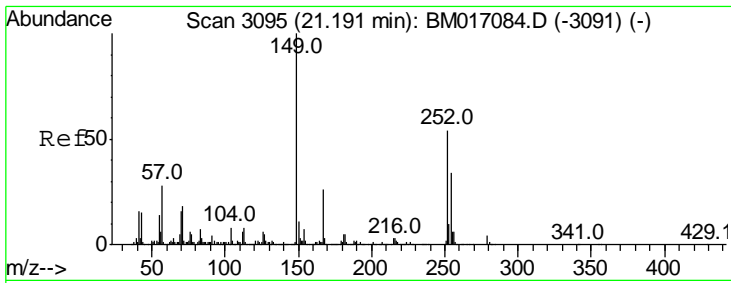
Tgt Ion	Resp	Lower	Upper
252	100		
254	65.0	50.6	76.0
126	11.2	8.2	12.2



#83
 Benzo(a)anthracene
 Concen: 20.053 ng/ul
 RT: 21.25 min Scan# 3105
 Delta R.T. 0.00 min
 Lab File: BM017092.D
 Acq: 09 Oct 2018 07:29

Tgt Ion	Resp	Lower	Upper
228	100		
229	19.5	15.7	23.5
226	26.4	20.9	31.3

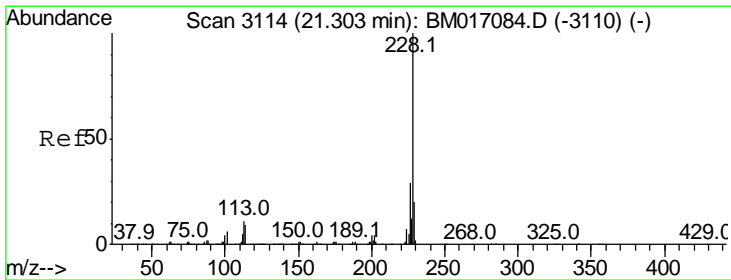
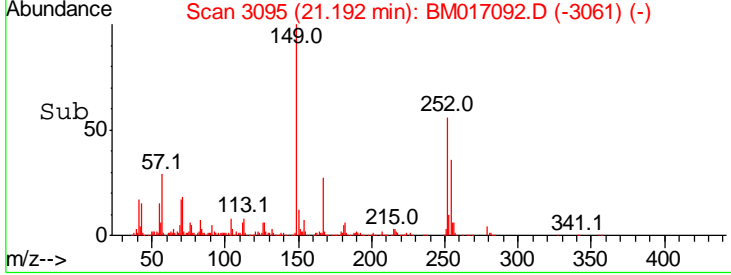
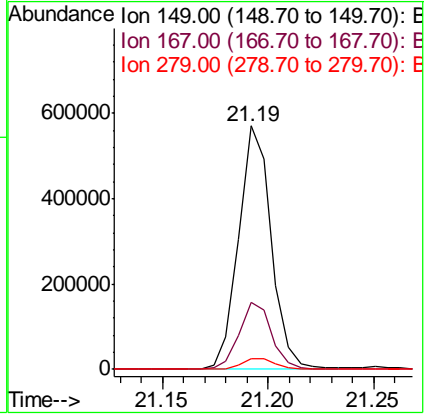
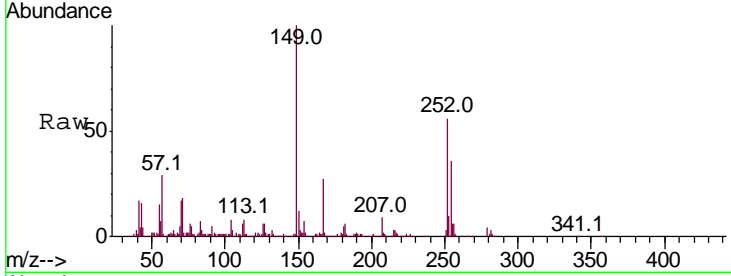




#84
 Bis(2-ethylhexyl)phthalate
 Concen: 15.227 ng/ul
 RT: 21.19 min Scan# 3095
 Delta R.T. 0.00 min
 Lab File: BM017092.D
 Acq: 09 Oct 2018 07:29

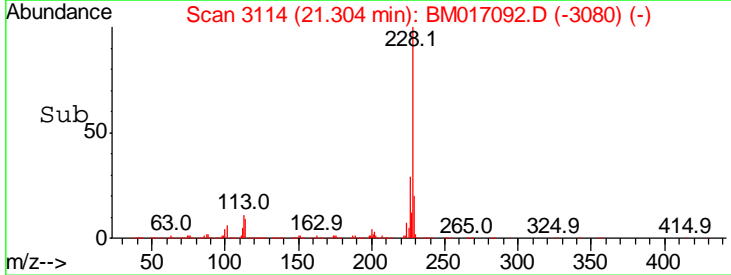
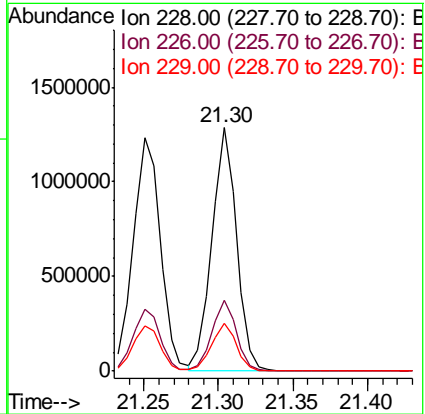
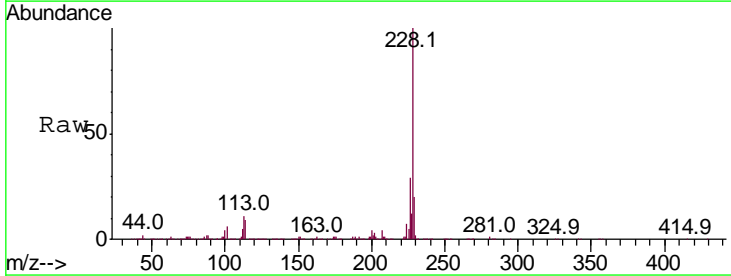
Instrument :
 BNA_M
 ClientSampled :

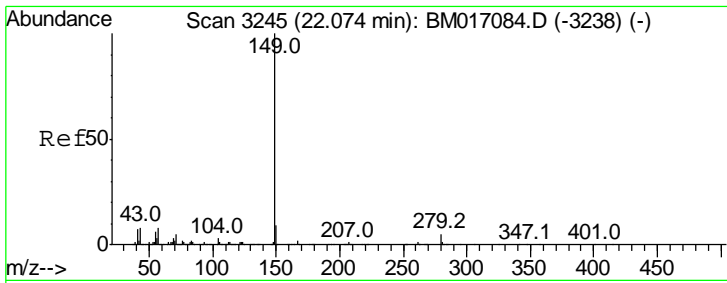
Tgt Ion	Resp	Lower	Upper
149	100		
167	27.3	22.5	33.7
279	4.2	3.7	5.5



#85
 Chrysene
 Concen: 19.789 ng/ul
 RT: 21.30 min Scan# 3114
 Delta R.T. 0.00 min
 Lab File: BM017092.D
 Acq: 09 Oct 2018 07:29

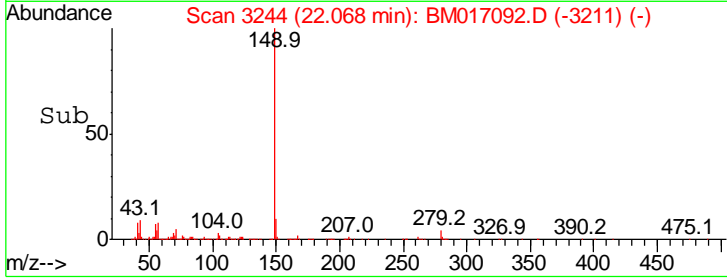
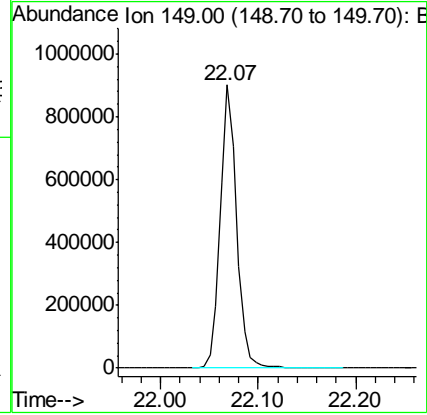
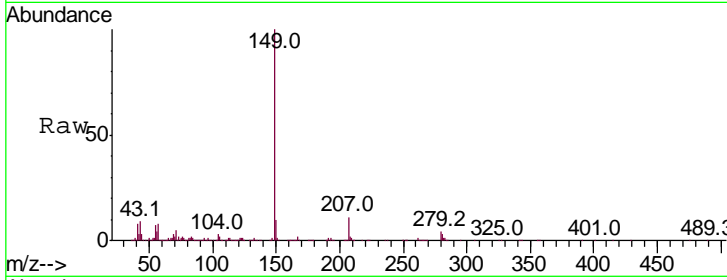
Tgt Ion	Resp	Lower	Upper
228	100		
226	28.8	23.4	35.2
229	19.5	15.6	23.4





#87
 Di-n-octyl phthalate
 Concen: 14.739 ng/ul
 RT: 22.07 min Scan# 3244
 Delta R.T. -0.01 min
 Lab File: BM017092.D
 Acq: 09 Oct 2018 07:29
 Tgt Ion:149 Resp: 1046763

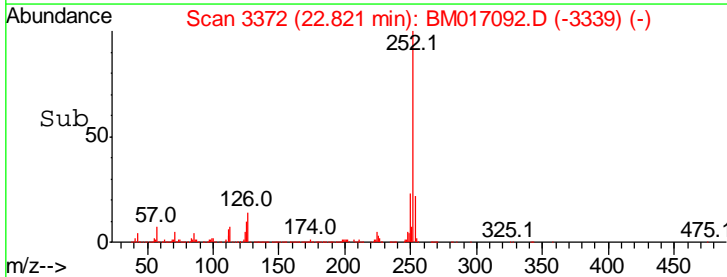
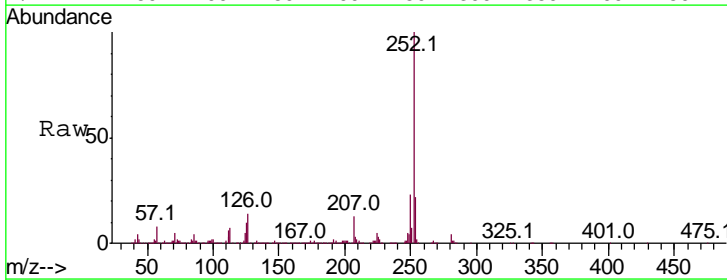
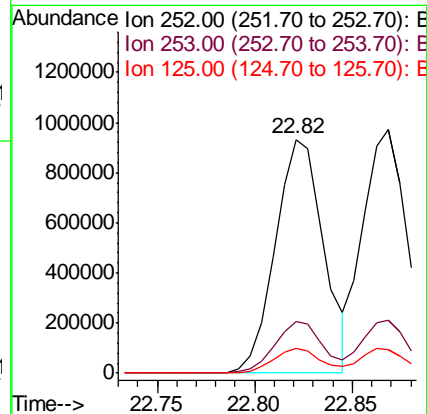
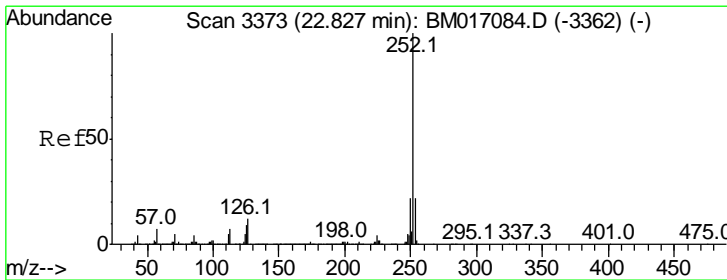
Instrument :
 BNA_M
 ClientSampled :

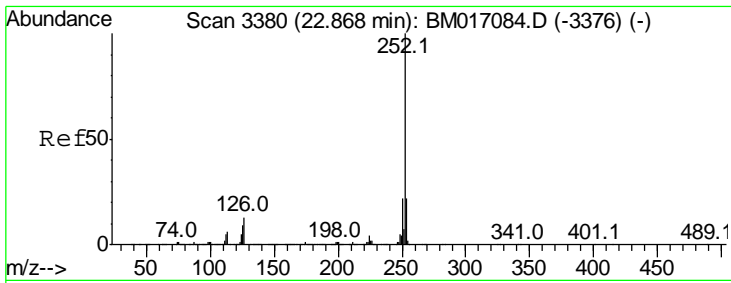


#88
 Benzo(b)fluoranthene
 Concen: 20.175 ng/ul
 RT: 22.82 min Scan# 3372
 Delta R.T. -0.01 min
 Lab File: BM017092.D
 Acq: 09 Oct 2018 07:29

Tgt Ion:252 Resp: 1595580

Ion	Ratio	Lower	Upper
252	100		
253	22.2	17.3	25.9
125	10.5	8.2	12.4

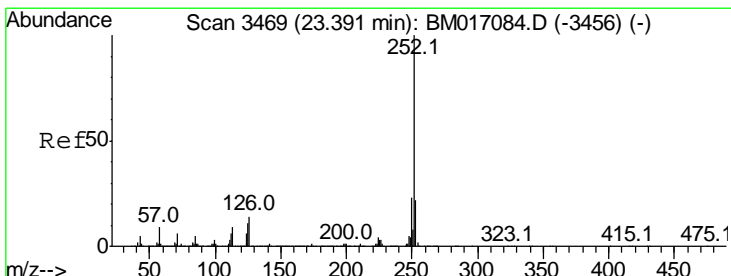
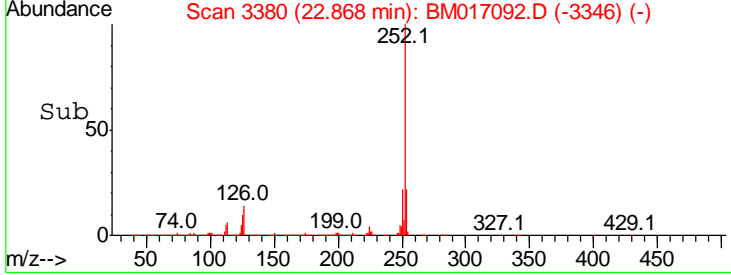
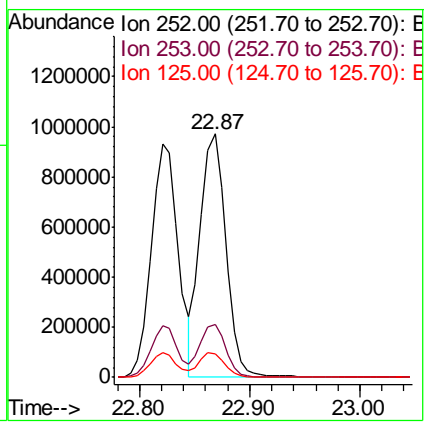
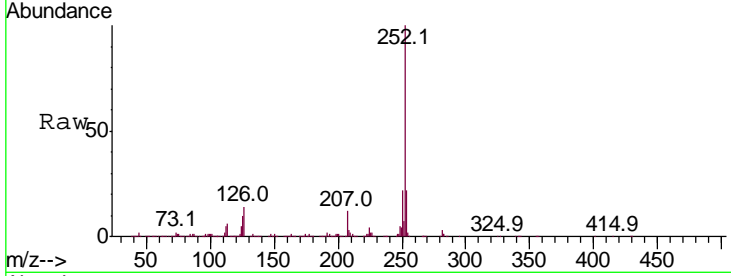




#89
 Benzo(k)fluoranthene
 Concen: 20.393 ng/ul
 RT: 22.87 min Scan# 3380
 Delta R.T. 0.00 min
 Lab File: BM017092.D
 Acq: 09 Oct 2018 07:29

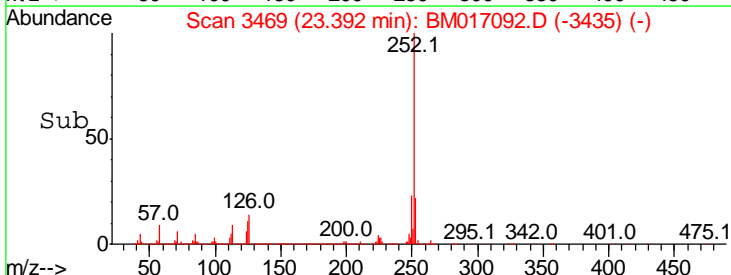
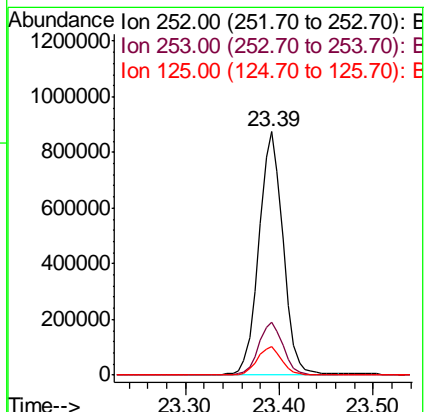
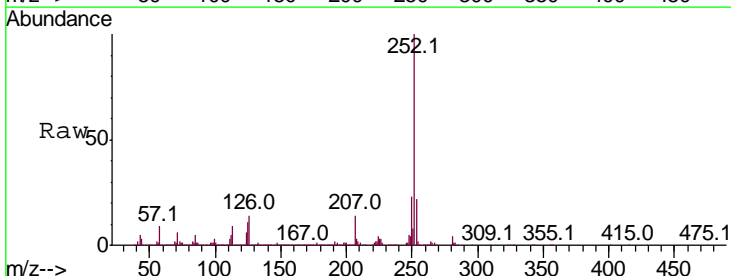
Instrument :
 BNA_M
 ClientSampled :

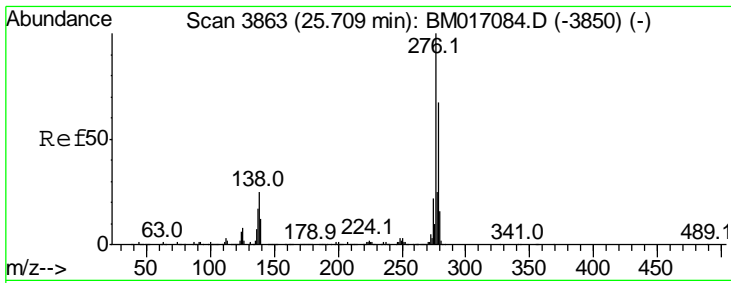
Tgt Ion	Resp	Lower	Upper
252	100		
253	21.9	17.5	26.3
125	9.8	8.2	12.4



#91
 Benzo(a)pyrene
 Concen: 20.385 ng/ul
 RT: 23.39 min Scan# 3469
 Delta R.T. 0.00 min
 Lab File: BM017092.D
 Acq: 09 Oct 2018 07:29

Tgt Ion	Resp	Lower	Upper
252	100		
253	21.9	17.0	25.4
125	11.5	9.0	13.6



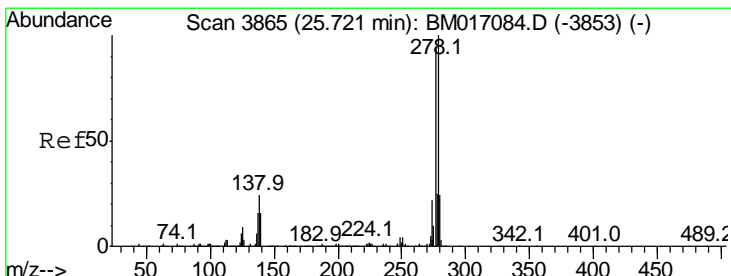
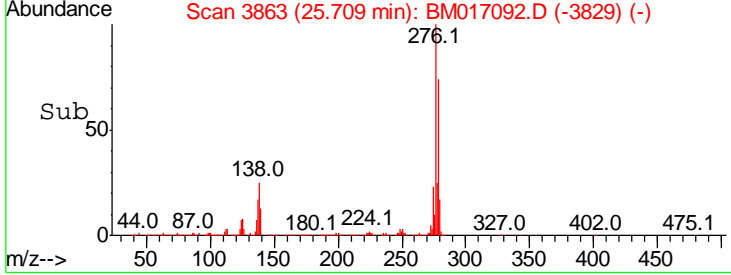
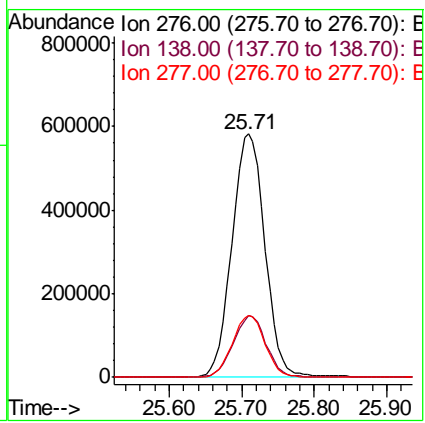
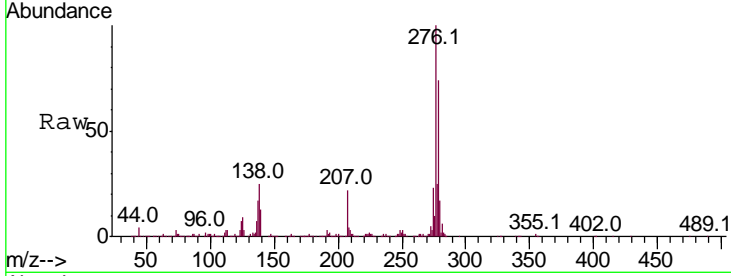


#92
 Indeno(1,2,3-cd)pyrene
 Concen: 20.424 ng/ul
 RT: 25.71 min Scan# 3863
 Delta R.T. 0.00 min
 Lab File: BM017092.D
 Acq: 09 Oct 2018 07:29

Instrument :
 BNA_M
 ClientSampled :

Tgt Ion: 276 Resp: 1837794

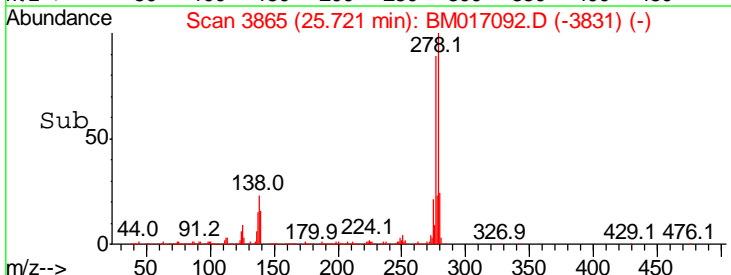
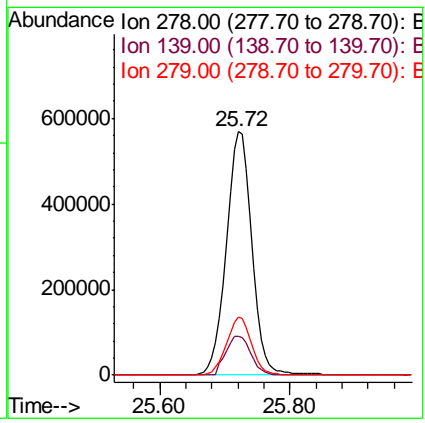
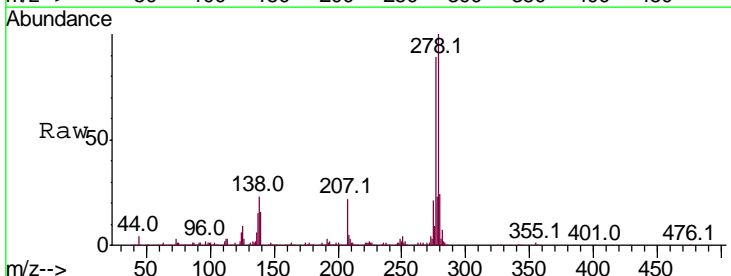
Ion	Ratio	Lower	Upper
276	100		
138	25.3	20.3	30.5
277	25.4	20.2	30.2

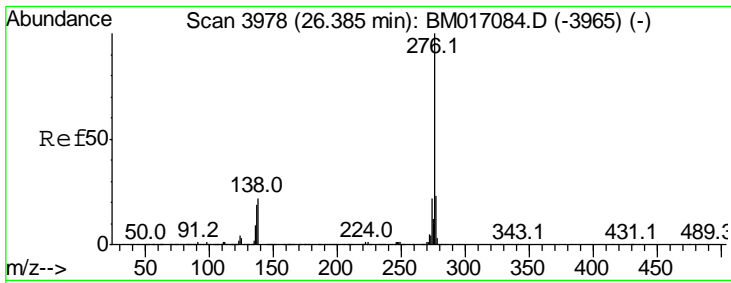


#93
 Dibenzo(a,h)anthracene
 Concen: 20.706 ng/ul
 RT: 25.72 min Scan# 3865
 Delta R.T. 0.00 min
 Lab File: BM017092.D
 Acq: 09 Oct 2018 07:29

Tgt Ion: 278 Resp: 1551034

Ion	Ratio	Lower	Upper
278	100		
139	16.0	13.2	19.8
279	23.8	18.4	27.6





#94
 Benzo(a,h,i)perylene
 Concen: 20.236 ng/ul
 RT: 26.39 min Scan# 3979
 Delta R.T. 0.01 min
 Lab File: BM017092.D
 Acq: 09 Oct 2018 07:29

Instrument :
 BNA_M
 ClientSampled :

Tot Ion: 276 Resp: 1516339

Ion	Ratio	Lower	Upper
276	100		
138	21.9	17.5	26.3
277	23.2	18.5	27.7

