

Data Path : Z:\SVOASRV\HPCHEM1\BNA M\DATA\BM100819\  
 Data File : BM023052.D  
 Acq On : 08 Oct 2019 19:11  
 Operator : JU  
 Sample : K5056-19  
 Misc :  
 ALS Vial : 19 Sample Multiplier: 1

Instrument :  
 BNA\_M  
 ClientSampleId :

Quant Time: Oct 09 02:00:27 2019  
 Quant Method : Z:\SVOASRV\HPCHEM1\BNA\_M\METHODS\SOM-EPA-BM092719MA.M  
 Quant Title : SVOA CALIBRATION  
 QLast Update : Tue Oct 08 15:02:34 2019  
 Response via : Initial Calibration

Internal Standards	R.T.	QIon	Response	Conc	Units	Dev(Min)
1) 1,4-Dichlorobenzene-d4	7.77	152	215819	20.00	ng/ul	0.00
18) Naphthalene-d8	10.56	136	883592	20.00	ng/ul	0.00
36) Acenaphthene-d10	14.41	164	506747	20.00	ng/ul	0.00
62) Phenanthrene-d10	17.15	188	1000731	20.00	ng/ul	0.00
78) Chrysene-d12	21.33	240	1012915	20.00	ng/ul	0.00
86) Perylene-d12	23.59	264	1187665	20.00	ng/ul	0.00

## System Monitoring Compounds

3) 1,4-Dioxane-d8	3.25	96	31558	6.32	ng/uL	0.00
5) Phenol-d5	6.94	99	610569	32.02	ng/ul	0.00
7) Bis-(2-Chloroethyl)ether-d	7.11	67	355433	34.06	ng/ul	0.00
9) 2-Chlorophenol-d4	7.31	132	511548	33.31	ng/ul	0.00
13) 4-Methylphenol-d8	8.48	113	490640	31.43	ng/ul	0.00
19) Nitrobenzene-d5	8.93	128	244921	35.92	ng/ul	0.00
22) 2-Nitrophenol-d4	9.65	143	269891	36.25	ng/ul	0.00
26) 2,4-Dichlorophenol-d3	10.19	165	487436	32.88	ng/ul	0.00
29) 4-Chloroaniline-d4	10.70	131	676241	37.55	ng/ul	0.00
44) Dimethylphthalate-d6	13.82	166	1381898	35.14	ng/ul	0.00
47) Acenaphthylene-d8	14.10	160	1671988	36.82	ng/ul	0.00
52) 4-Nitrophenol-d4	14.60	143	237864	30.61	ng/ul	0.00
58) Fluorene-d10	15.40	176	1199053	35.77	ng/ul	0.00
63) 4,6-Dinitro-2-methylphenol	15.52	200	183191	28.13	ng/ul	0.00
71) Anthracene-d10	17.25	188	1776787	36.36	ng/ul	0.00
79) Pyrene-d10	19.54	212	2021771	37.09	ng/ul	0.00
90) Benzo(a)pyrene-d12	23.44	264	2315101	37.68	ng/ul	0.00

## Target Compounds

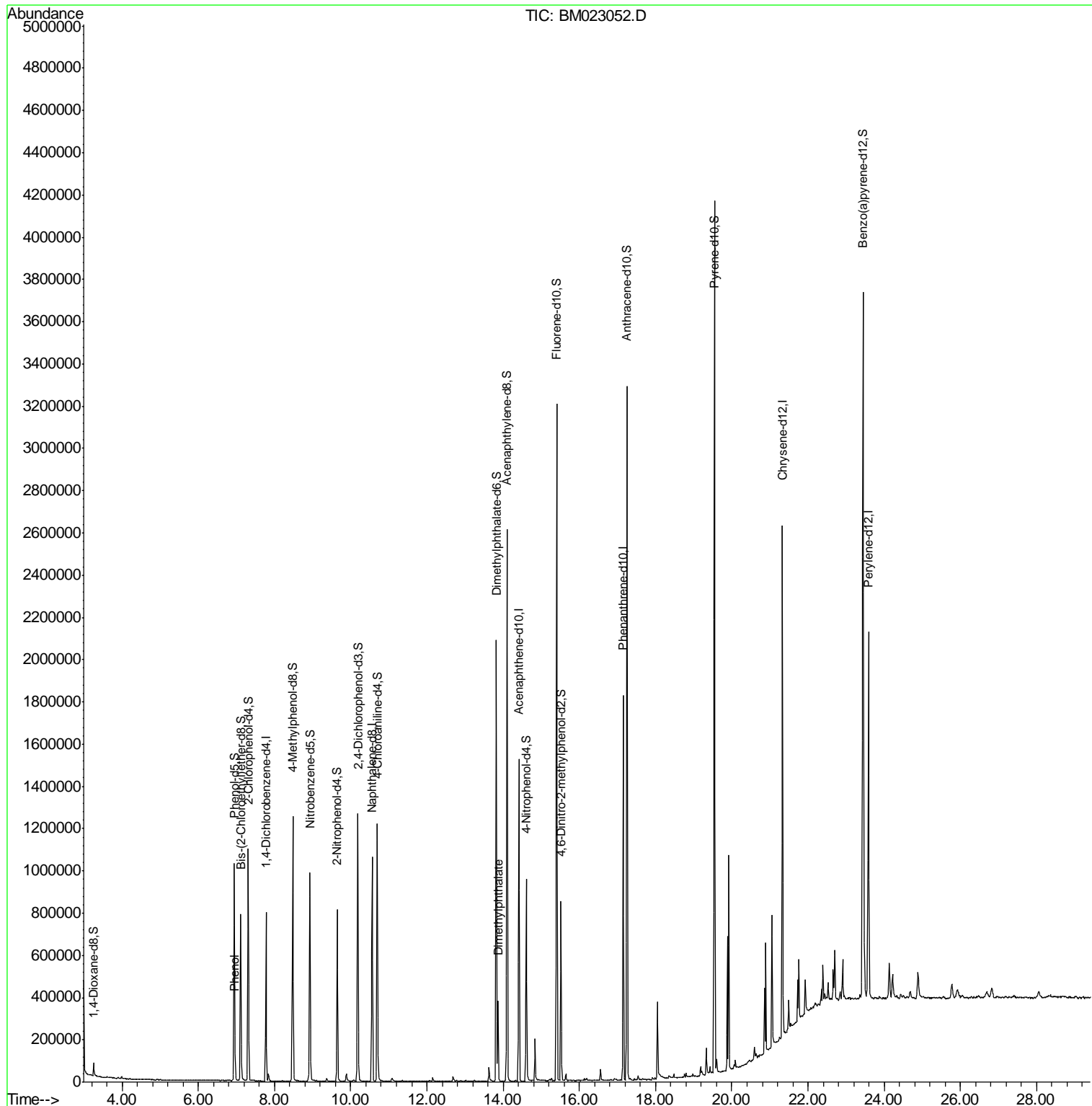
					Ovalue
6) Phenol	6.97	94	42093	2.106	ng/ul 96
45) Dimethylphthalate	13.87	163	240046	5.942	ng/ul 99

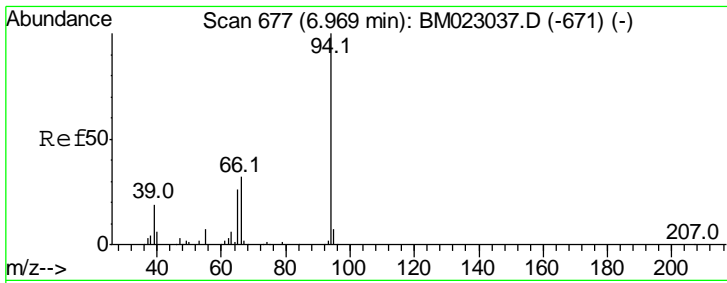
(#) = qualifier out of range (m) = manual integration (+) = signals summed

Data Path : Z:\SVOASRV\HPCHEM1\BNA M\DATA\BM100819\  
 Data File : BM023052.D  
 Acq On : 08 Oct 2019 19:11  
 Operator : JU  
 Sample : K5056-19  
 Misc :  
 ALS Vial : 19 Sample Multiplier: 1

Instrument :  
 BNA\_M  
 ClientSampled :

Quant Time: Oct 09 02:00:27 2019  
 Quant Method : Z:\SVOASRV\HPCHEM1\BNA\_M\METHODS\SOM-EPA-BM092719MA.M  
 Quant Title : SVOA CALIBRATION  
 QLast Update : Tue Oct 08 15:02:34 2019  
 Response via : Initial Calibration

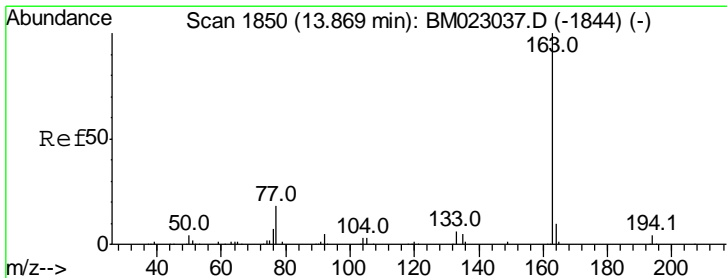
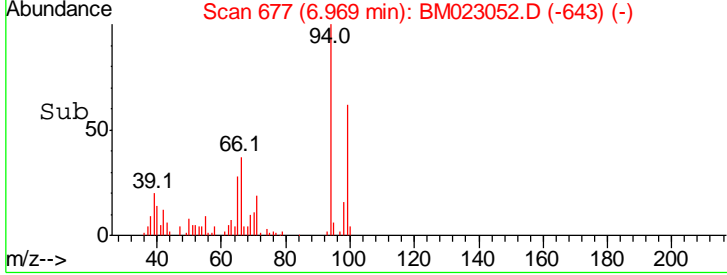
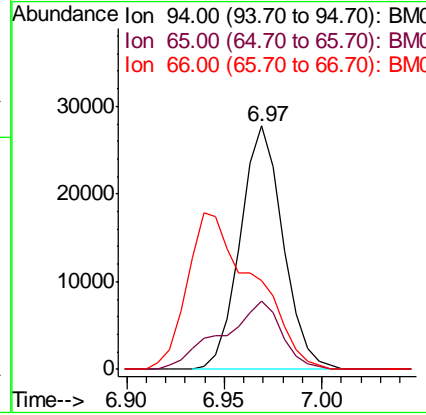
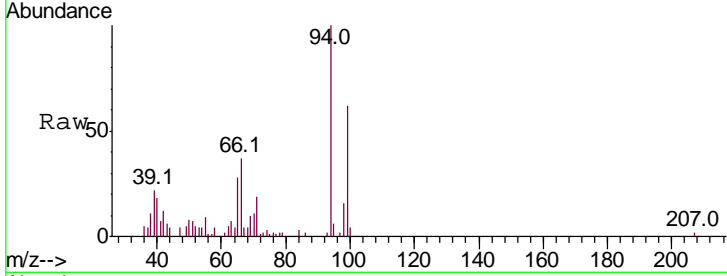




#6  
 Phenol  
 Concen: 2.106 ng/ul  
 RT: 6.97 min Scan# 677  
 Delta R.T. 0.00 min  
 Lab File: BM023052.D  
 Acq: 08 Oct 2019 19:11

Instrument :  
 BNA\_M  
 ClientSampled :

Tgt Ion	Resp	Lower	Upper
94	42093		
65	27.8	20.9	31.3
66	36.7	27.2	40.8



#45  
 Dimethylphthalate  
 Concen: 5.942 ng/ul  
 RT: 13.87 min Scan# 1850  
 Delta R.T. 0.00 min  
 Lab File: BM023052.D  
 Acq: 08 Oct 2019 19:11

Tgt Ion	Resp	Lower	Upper
163	240046		
194	4.0	3.4	5.0
164	9.9	8.1	12.1

