

Data Path : Z:\HPCHEM1\BNA_M\DATA\BM101217\
 Data File : BM012122.D
 Acq On : 13 Oct 2017 05:16
 Operator : SJ/JU
 Sample : I5533-04MS
 Misc :
 ALS Vial : 22 Sample Multiplier: 1

Instrument :
 BNA_M
 ClientSampleId :
 B-77(0-1)-092817MS

Manual Integrations
 APPROVED

Sohil
 10/15/2017 12:37:04 PM

Quant Time: Oct 14 23:25:45 2017
 Quant Method : Z:\HPCHEM1\BNA_M\METHODS\SOM-EPA-BM101217.M
 Quant Title : SVOA CALIBRATION
 QLast Update : Sat Oct 14 00:15:07 2017
 Response via : Initial Calibration

Internal Standards	R.T.	QIon	Response	Conc	Units	Dev(Min)
1) 1,4-Dichlorobenzene-d4	7.85	152	300485	20.00	ng/ul	0.00
18) Naphthalene-d8	10.65	136	1287078	20.00	ng/ul	0.00
35) Acenaphthene-d10	14.50	164	759118	20.00	ng/ul	0.00
61) Phenanthrene-d10	17.24	188	1512685	20.00	ng/ul	0.00
75) Chrysene-d12	21.43	240	1486160	20.00	ng/ul	0.00
83) Perylene-d12	23.76	264	1565175	20.00	ng/ul	-0.01

System Monitoring Compounds

3) 1,4-Dioxane-d8	3.25	96	13636	2.16	ng/uL	0.00
5) Phenol-d5	7.02	99	353246	14.49	ng/ul	0.00
7) Bis-(2-Chloroethyl)ether-d	7.17	67	213974	14.63	ng/ul	0.00
9) 2-Chlorophenol-d4	7.37	132	320074	15.48	ng/ul	0.00
13) 4-Methylphenol-d8	8.56	113	305711	14.56	ng/ul	-0.01
19) Nitrobenzene-d5	9.02	128	154366	15.72	ng/ul	0.00
22) 2-Nitrophenol-d4	9.73	143	154024	13.42	ng/ul	0.00
26) 2,4-Dichlorophenol-d3	10.28	165	338011	15.43	ng/ul	0.00
29) 4-Chloroaniline-d4	10.80	131	113883	5.55	ng/ul	0.00
43) Dimethylphthalate-d6	13.90	166	1068121	15.92	ng/ul	0.00
46) Acenaphthylene-d8	14.19	160	1357133	16.71	ng/ul	0.00
51) 4-Nitrophenol-d4	14.72	143	75866	7.52	ng/ul	-0.01
57) Fluorene-d10	15.49	176	911095	16.55	ng/ul	0.00
62) 4,6-Dinitro-2-methylphenol	15.64	200	3597	0.35	ng/ul	0.00
70) Anthracene-d10	17.34	188	1263691	16.89	ng/ul	0.00
76) Pyrene-d10	19.64	212	1257166	16.66	ng/ul	0.00
87) Benzo(a)pyrene-d12	23.62	264	1276898	16.92	ng/ul	0.00

Target Compounds

Target Compounds	R.T.	QIon	Response	Conc	Units	Qvalue
6) Phenol	7.04	94	408465	16.21	ng/ul#	84
10) 2-Chlorophenol	7.41	128	324263	15.36	ng/ul	98
15) N-Nitroso-di-n-propylamine	8.65	70	206578	12.08	ng/ul#	70
33) 4-Chloro-3-methylphenol	11.95	107	353588	15.64	ng/ul	97
44) Dimethylphthalate	13.95	163	197415	2.94	ng/ul	100
47) Acenaphthylene	14.22	152	133303	1.67	ng/ul	98
49) Acenaphthene	14.56	153	813800	15.15	ng/ul	99
52) 4-Nitrophenol	14.73	109	75614	8.34	ng/ul	82
54) 2,4-Dinitrotoluene	14.88	165	220984	11.43	ng/ul	85
68) Pentachlorophenol	16.90	266	120914	10.57	ng/ul	98
69) Phenanthrene	17.29	178	1124719	13.07	ng/ul	99
71) Anthracene	17.38	178	322836	3.62	ng/ul	97
74) Fluoranthene	19.30	202	2521271	24.28	ng/ul#	91
77) Pyrene	19.67	202	3699879	37.70	ng/ul#	89
80) Benzo(a)anthracene	21.41	228	1729207	17.88	ng/ul	96
82) Chrysene	21.46	228	1540765	16.97	ng/ul	94
85) Benzo(b)fluoranthene	23.06	252	2006325	19.64	ng/ul#	91
86) Benzo(k)fluoranthene	23.10	252	702986m	7.14	ng/ul	
88) Benzo(a)pyrene	23.66	252	1520072	15.79	ng/ul#	92
89) Indeno(1,2,3-cd)pyrene	26.17	276	900059	8.80	ng/ul#	91
90) Dibenzo(a,h)anthracene	26.16	278	259103	3.01	ng/ul#	56
91) Benzo(g,h,i)perylene	26.90	276	796309	9.51	ng/ul#	86

Data Path : Z:\HPCHEM1\BNA_M\DATA\BM101217\
 Data File : BM012122.D
 Acq On : 13 Oct 2017 05:16
 Operator : SJ/JU
 Sample : I5533-04MS
 Misc :
 ALS Vial : 22 Sample Multiplier: 1

Instrument :
 BNA_M
ClientSampleId :
 B-77(0-1)-092817MS

Manual Integrations
APPROVED
 Sohil
 10/15/2017 12:37:04 PM

Quant Time: Oct 14 23:25:45 2017
 Quant Method : Z:\HPCHEM1\BNA_M\METHODS\SOM-EPA-BM101217.M
 Quant Title : SVOA CALIBRATION
 QLast Update : Sat Oct 14 00:15:07 2017
 Response via : Initial Calibration

Internal Standards R.T. QIon Response Conc Units Dev(Min)

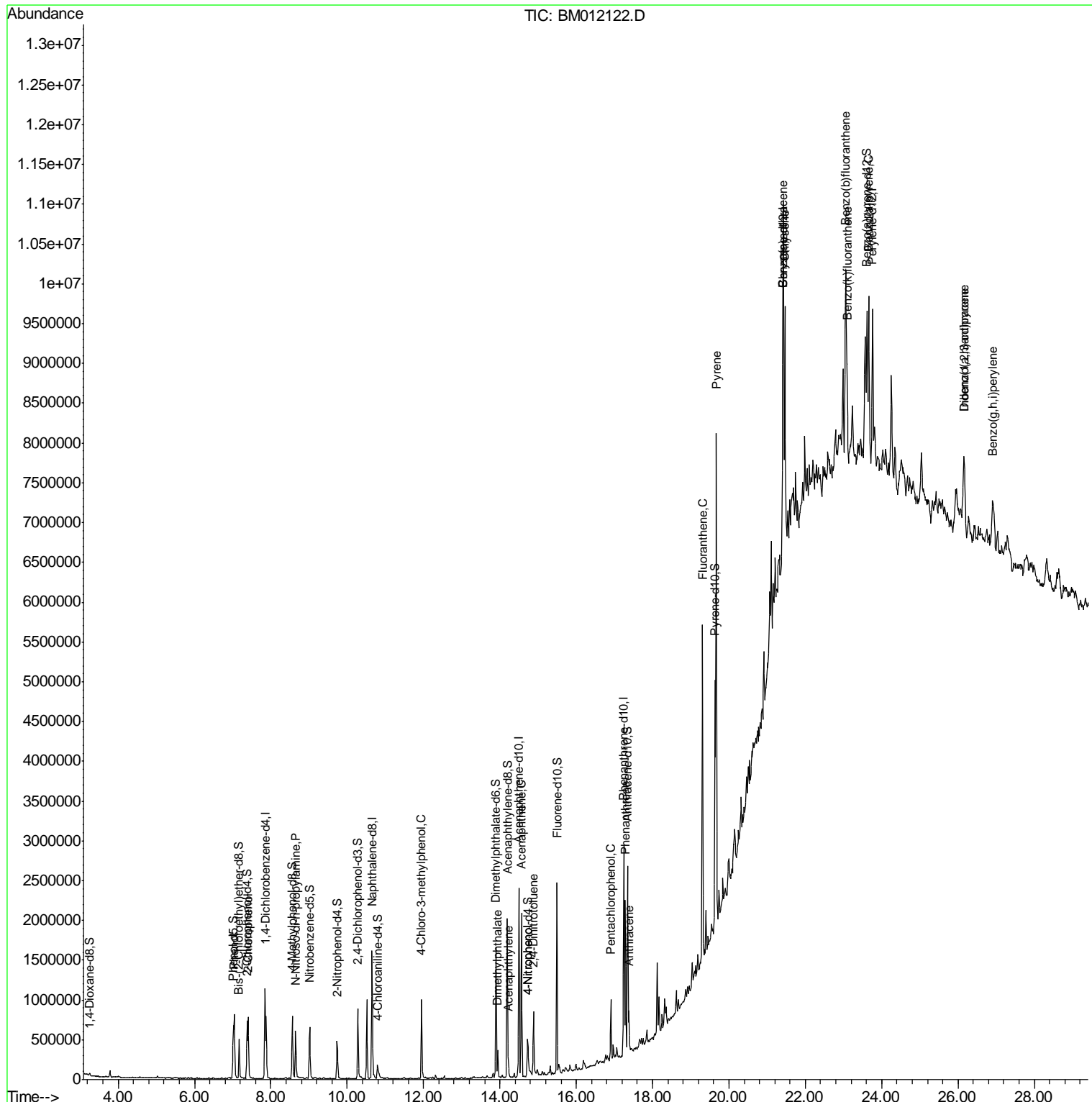
(#) = qualifier out of range (m) = manual integration (+) = signals summed

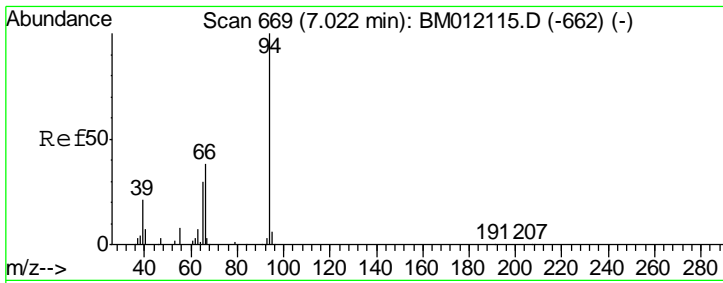
Data Path : Z:\HPCHEM1\BNA_M\DATA\BM101217\
 Data File : BM012122.D
 Acq On : 13 Oct 2017 05:16
 Operator : SJ/JU
 Sample : I5533-04MS
 Misc :
 ALS Vial : 22 Sample Multiplier: 1

Instrument :
 BNA_M
 Client Sampled :
 B-77(0-1)-092817MS

Manual Integrations
APPROVED
 Sohil
 10/15/2017 12:37:04 PM

Quant Time: Oct 14 23:25:45 2017
 Quant Method : Z:\HPCHEM1\BNA_M\METHODS\SOM-EPA-BM101217.M
 Quant Title : SVOA CALIBRATION
 QLast Update : Sat Oct 14 00:15:07 2017
 Response via : Initial Calibration





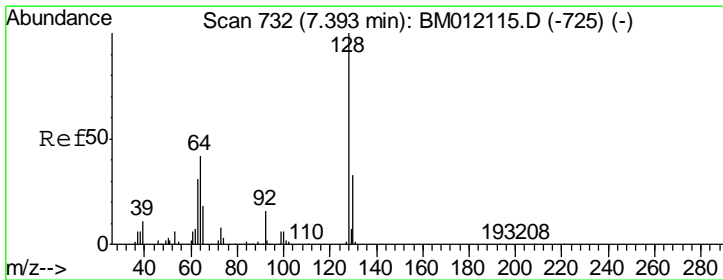
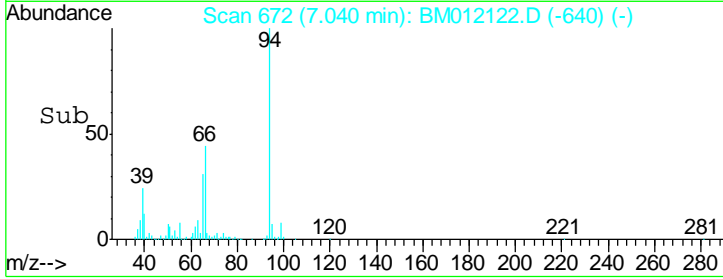
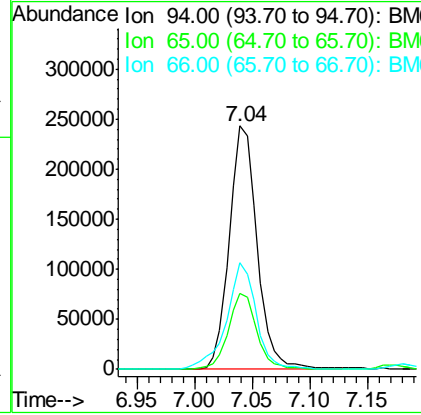
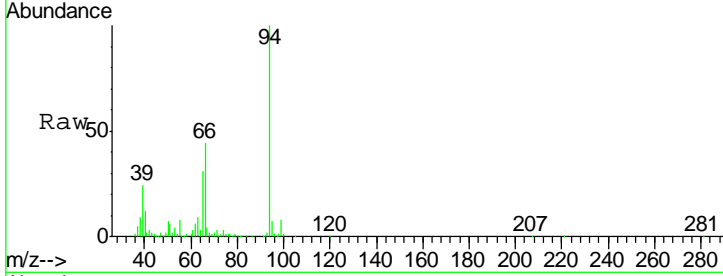
#6
 Phenol
 Concen: 16.21 ng/ul
 RT: 7.04 min Scan# 672
 Delta R.T. -0.01 min
 Lab File: BM012122.D
 Acq: 13 Oct 2017 05:16

Instrument :
 BNA_M
ClientSampled :
 B-77(0-1)-092817MS

Tgt Ion	Resp	Lower	Upper
94	100		
65	31.1	28.2	42.4
66	43.7	47.2	70.8#

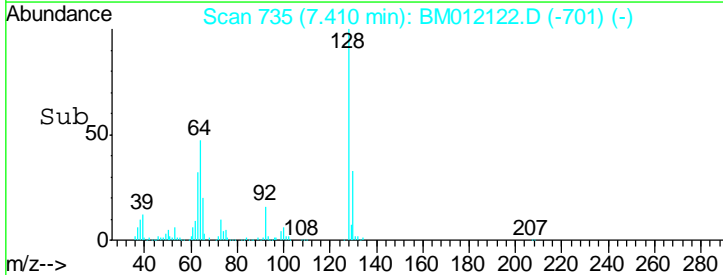
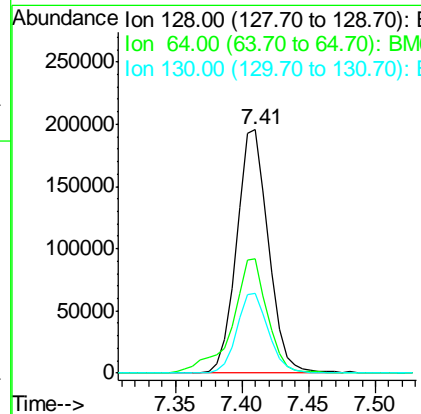
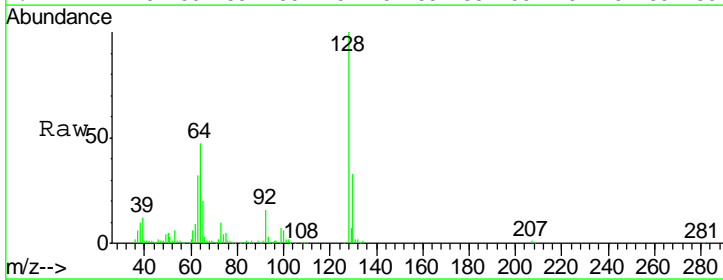
Manual Integrations
APPROVED

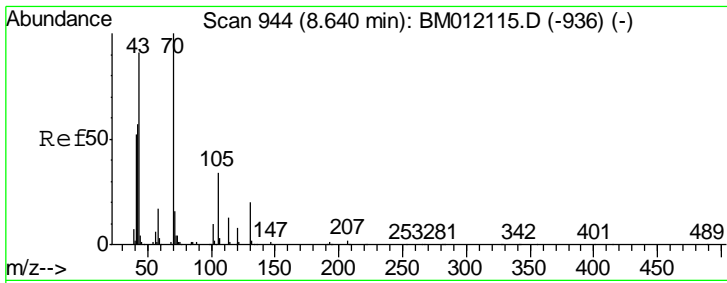
Sohil
 10/15/2017 12:37:04 PM



#10
 2-Chlorophenol
 Concen: 15.36 ng/ul
 RT: 7.41 min Scan# 735
 Delta R.T. 0.00 min
 Lab File: BM012122.D
 Acq: 13 Oct 2017 05:16

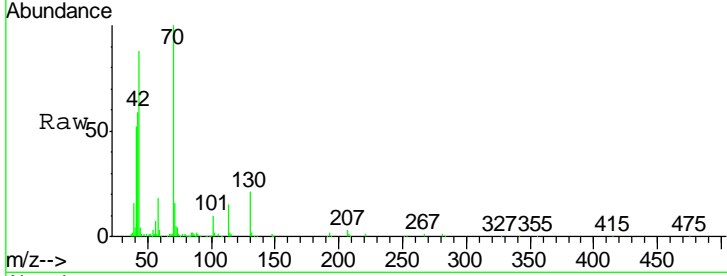
Tgt Ion	Resp	Lower	Upper
128	100		
64	47.0	38.0	57.0
130	32.9	24.4	36.6





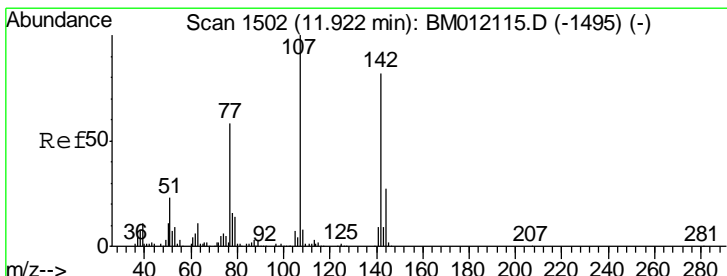
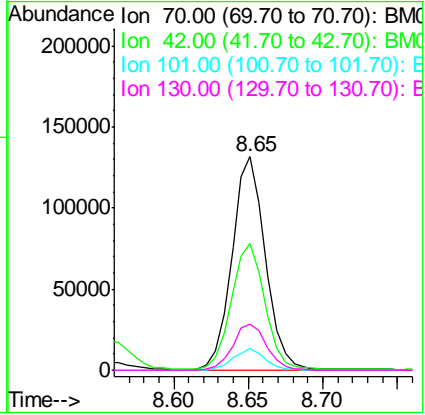
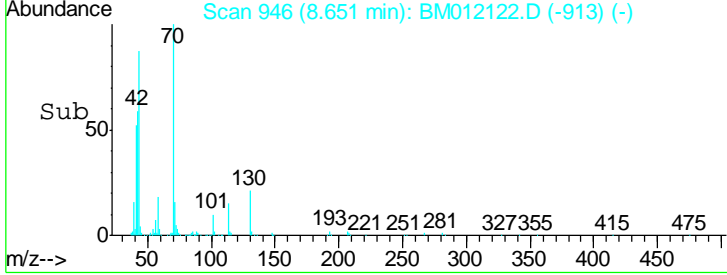
#15
 N-Nitroso-di-n-propylamine
 Concen: 12.08 ng/ul
 RT: 8.65 min Scan# 946
 Delta R.T. -0.01 min
 Lab File: BM012122.D
 Acq: 13 Oct 2017 05:16

Instrument :
 BNA_M
ClientSampled :
 B-77(0-1)-092817MS

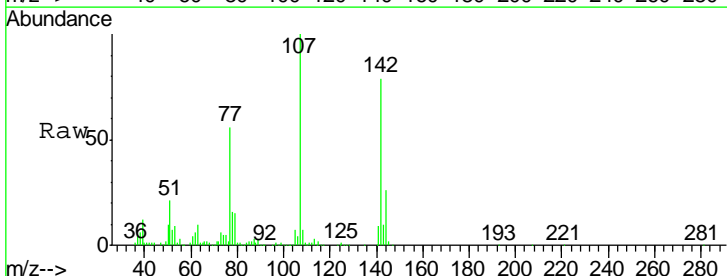


Tgt Ion	Resp	Lower	Upper
70	100		
42	59.1	76.0	114.0#
101	9.9	6.7	10.1
130	21.4	14.6	22.0

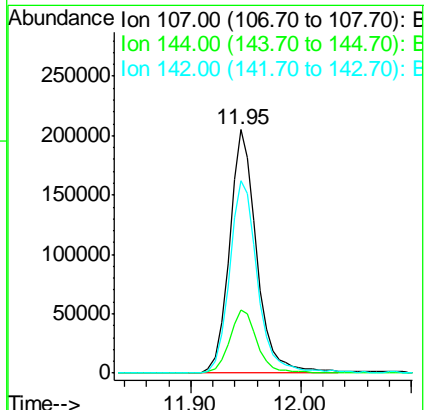
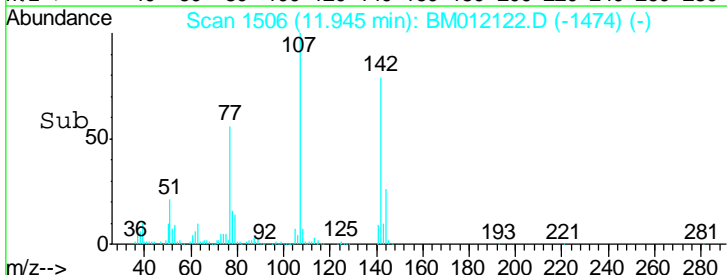
Manual Integrations
APPROVED
 Sohil
 10/15/2017 12:37:04 PM

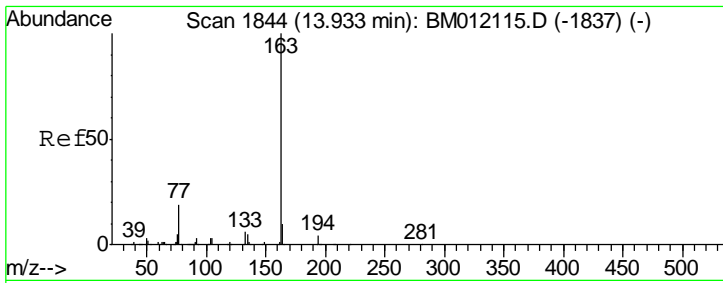


#33
 4-Chloro-3-methylphenol
 Concen: 15.64 ng/ul
 RT: 11.95 min Scan# 1506
 Delta R.T. -0.01 min
 Lab File: BM012122.D
 Acq: 13 Oct 2017 05:16



Tgt Ion	Resp	Lower	Upper
107	100		
144	25.7	20.4	30.6
142	78.8	60.5	90.7



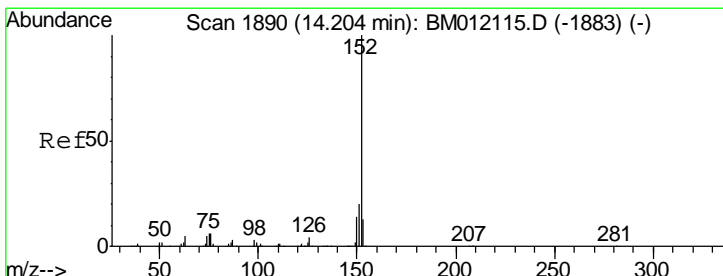
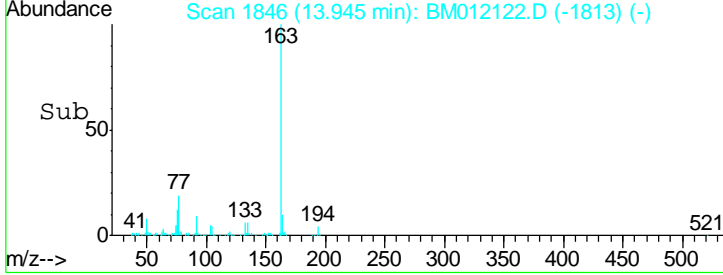
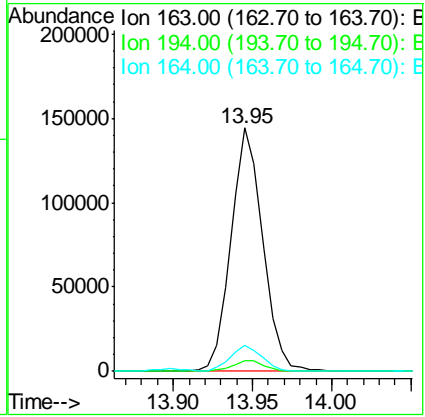
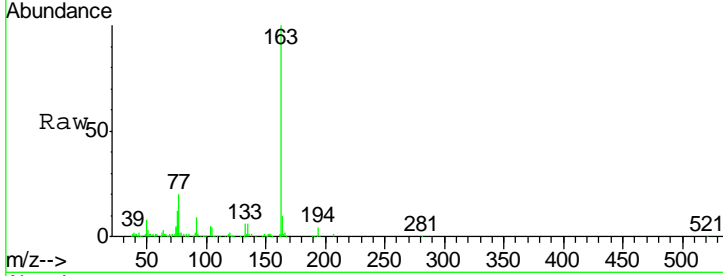


#44
 Dimethylphthalate
 Concen: 2.94 ng/ul
 RT: 13.95 min Scan# 1846
 Delta R.T. -0.01 min
 Lab File: BM012122.D
 Acq: 13 Oct 2017 05:16

Instrument :
 BNA_M
ClientSampled :
 B-77(0-1)-092817MS

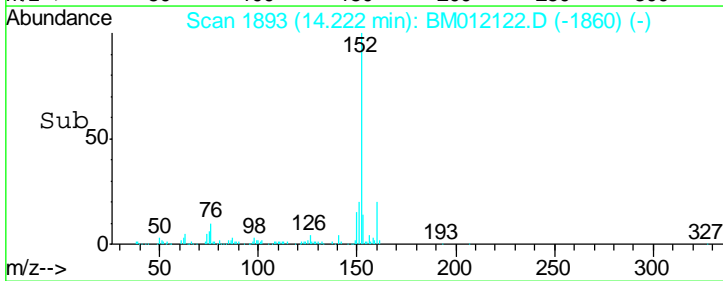
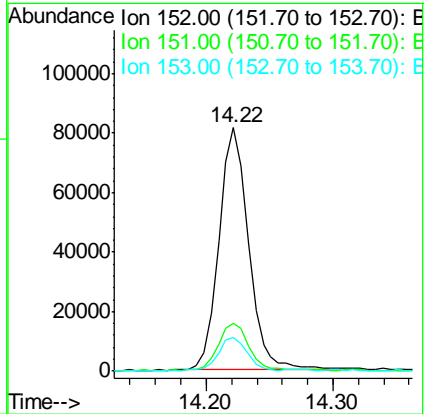
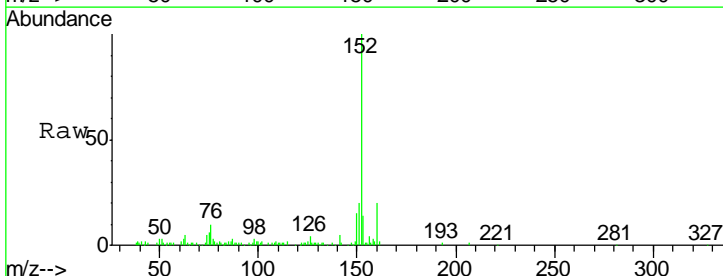
Tgt Ion	Resp	Lower	Upper
163	197415		
194	4.2	3.5	5.3
164	10.5	8.2	12.4

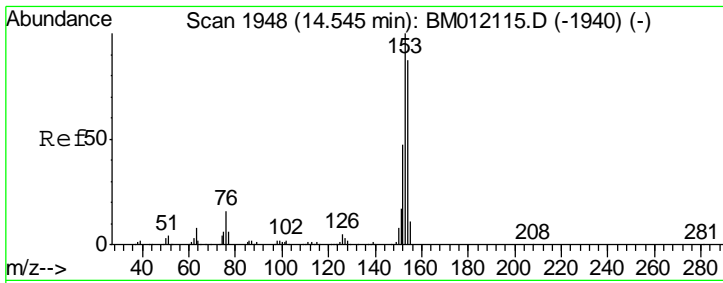
Manual Integrations
APPROVED
 Sohil
 10/15/2017 12:37:04 PM



#47
 Acenaphthylene
 Concen: 1.67 ng/ul
 RT: 14.22 min Scan# 1893
 Delta R.T. -0.01 min
 Lab File: BM012122.D
 Acq: 13 Oct 2017 05:16

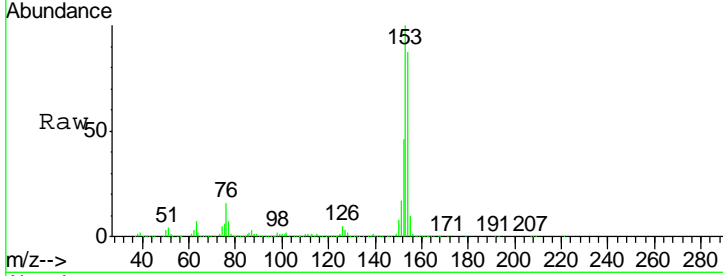
Tgt Ion	Resp	Lower	Upper
152	133303		
151	19.8	16.3	24.5
153	13.6	10.2	15.4





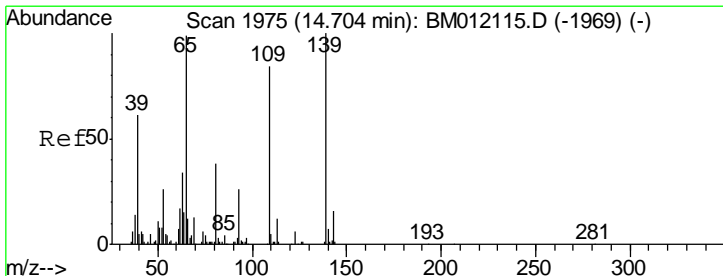
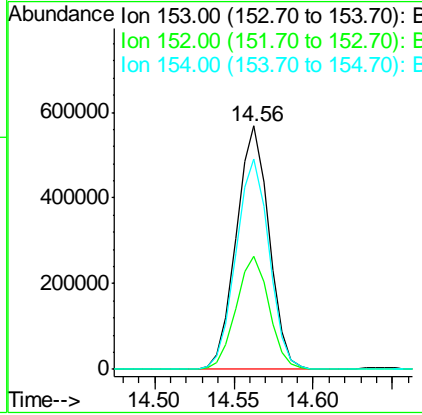
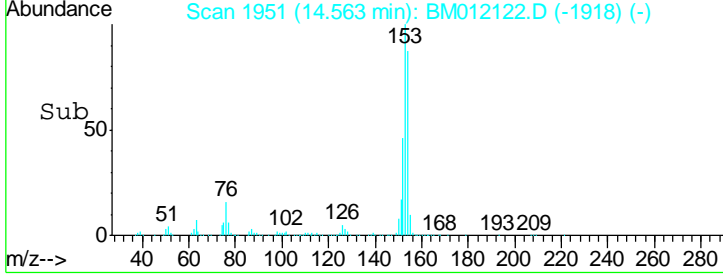
#49
 Acenaphthene
 Concen: 15.15 ng/ul
 RT: 14.56 min Scan# 1951
 Delta R.T. -0.01 min
 Lab File: BM012122.D
 Acq: 13 Oct 2017 05:16

Instrument :
 BNA_M
ClientSampled :
 B-77(0-1)-092817MS



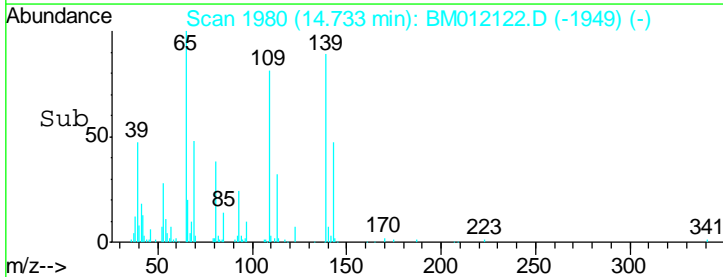
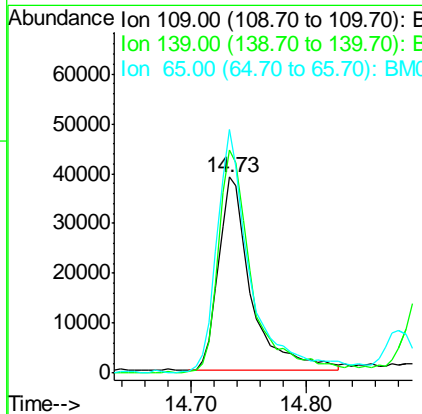
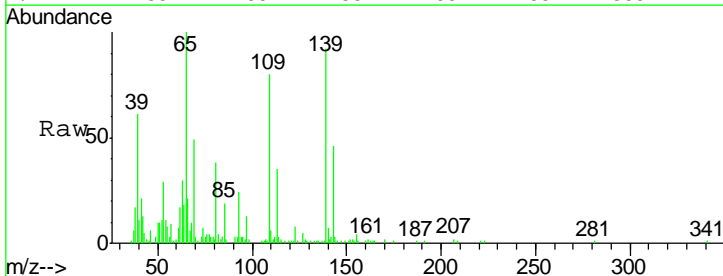
Tgt Ion	Resp	Lower	Upper
153	100		
152	46.3	37.6	56.4
154	86.6	70.4	105.6

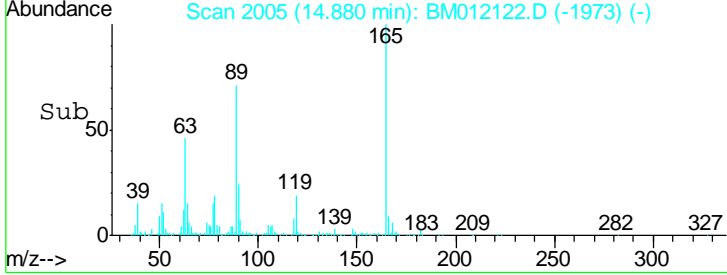
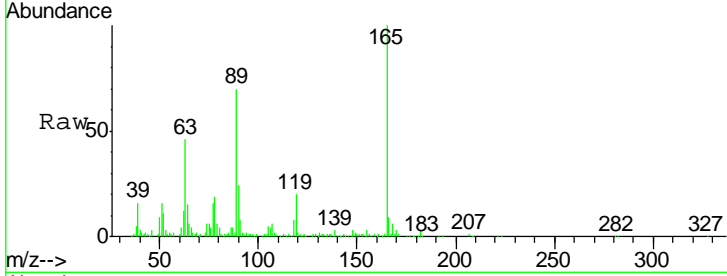
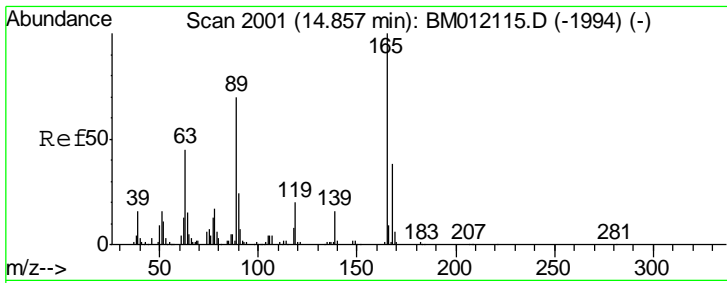
Manual Integrations
APPROVED
 Sohil
 10/15/2017 12:37:04 PM



#52
 4-Nitrophenol
 Concen: 8.34 ng/ul
 RT: 14.73 min Scan# 1980
 Delta R.T. -0.02 min
 Lab File: BM012122.D
 Acq: 13 Oct 2017 05:16

Tgt Ion	Resp	Lower	Upper
109	100		
139	113.8	80.0	120.0
65	124.3	120.0	180.0



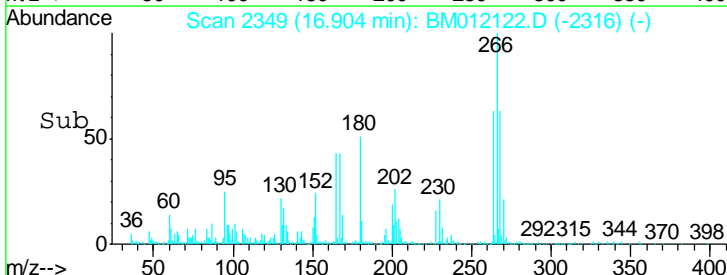
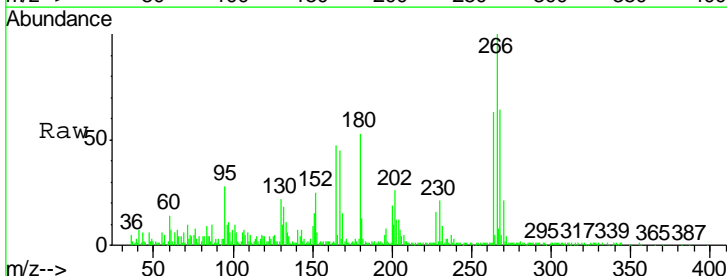
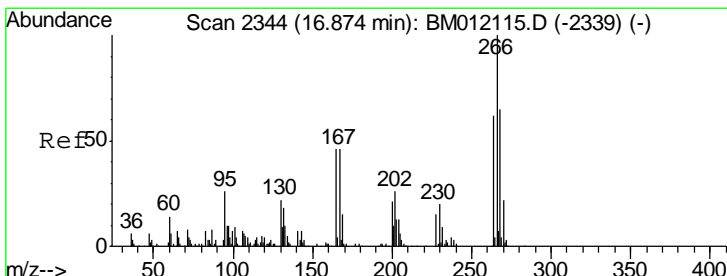
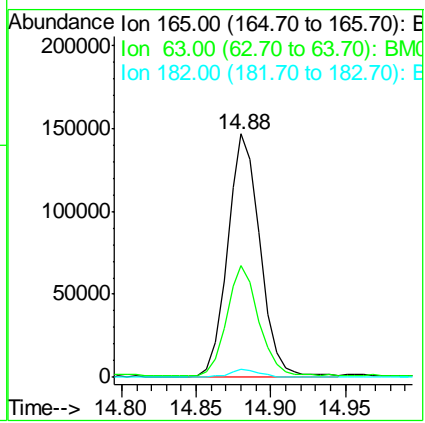


#54
 2,4-Dinitrotoluene
 Concen: 11.43 ng/ul
 RT: 14.88 min Scan# 2005
 Delta R.T. -0.01 min
 Lab File: BM012122.D
 Acq: 13 Oct 2017 05:16

Tgt Ion	Resp	Lower	Upper
165	100		
63	45.8	45.8	68.8
182	3.5	2.6	4.0

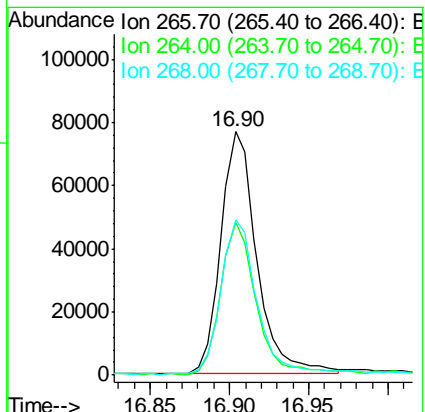
Instrument :
 BNA_M
 ClientSampleId :
 B-77(0-1)-092817MS

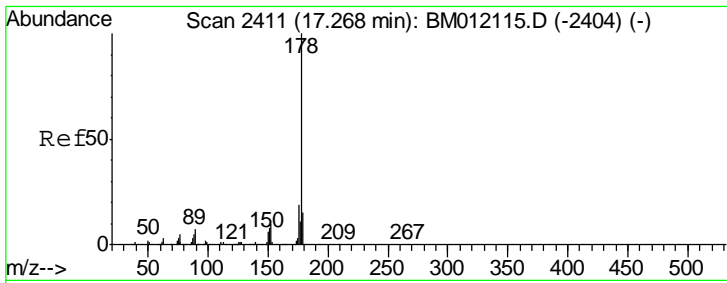
Manual Integrations
APPROVED
 Sohil
 10/15/2017 12:37:04 PM



#68
 Pentachlorophenol
 Concen: 10.57 ng/ul
 RT: 16.90 min Scan# 2349
 Delta R.T. -0.01 min
 Lab File: BM012122.D
 Acq: 13 Oct 2017 05:16

Tgt Ion	Resp	Lower	Upper
266	100		
264	62.6	49.3	73.9
268	63.5	52.6	78.8





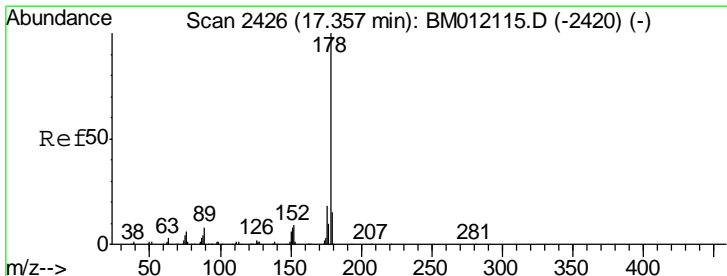
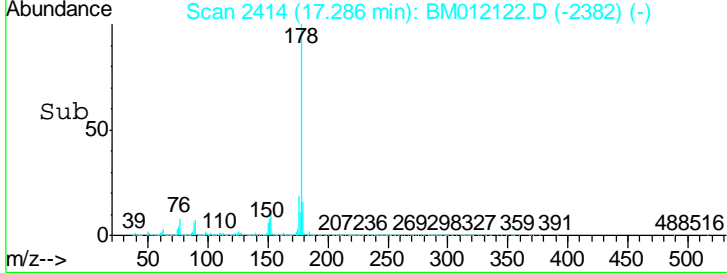
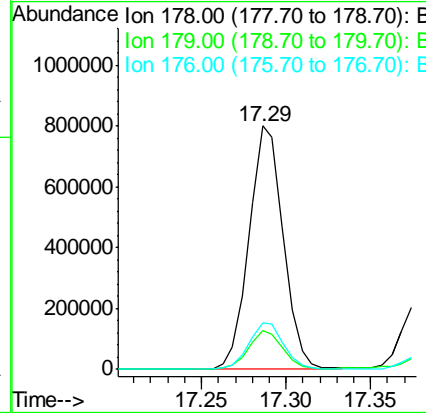
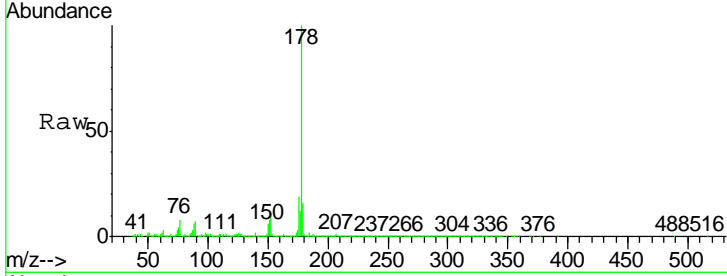
#69
 Phenanthrene
 Concen: 13.07 ng/ul
 RT: 17.29 min Scan# 2414
 Delta R.T. -0.01 min
 Lab File: BM012122.D
 Acq: 13 Oct 2017 05:16

Instrument :
 BNA_M
 ClientSampled :
 B-77(0-1)-092817MS

Tgt Ion	Resp	Lower	Upper
178	1124719		
179	16.0	12.6	19.0
176	19.0	14.9	22.3

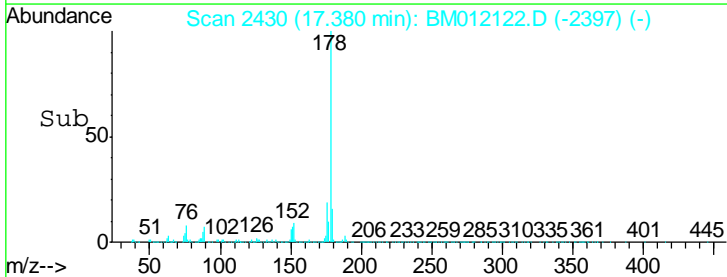
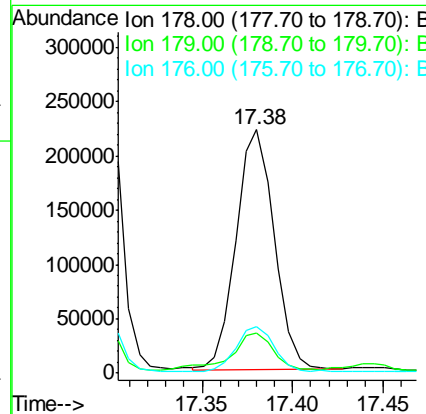
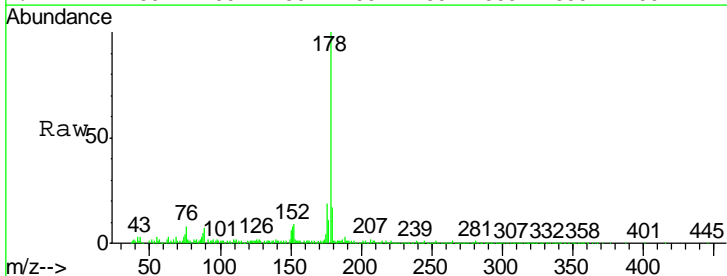
Manual Integrations
 APPROVED

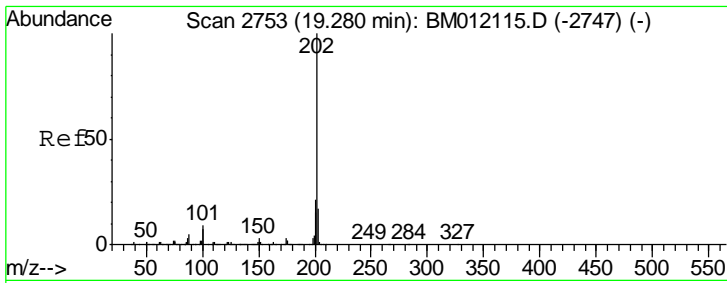
Sohil
 10/15/2017 12:37:04 PM



#71
 Anthracene
 Concen: 3.62 ng/ul
 RT: 17.38 min Scan# 2430
 Delta R.T. -0.01 min
 Lab File: BM012122.D
 Acq: 13 Oct 2017 05:16

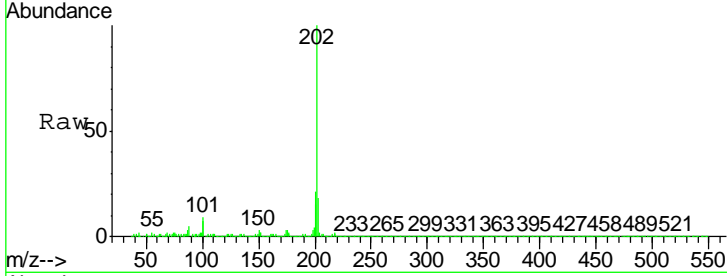
Tgt Ion	Resp	Lower	Upper
178	322836		
179	16.6	11.7	17.5
176	19.2	14.6	21.8





#74
 Fluoranthene
 Concen: 24.28 ng/ul
 RT: 19.30 min Scan# 2757
 Delta R.T. -0.01 min
 Lab File: BM012122.D
 Acq: 13 Oct 2017 05:16

Instrument :
 BNA_M
Client Sampled :
 B-77(0-1)-092817MS

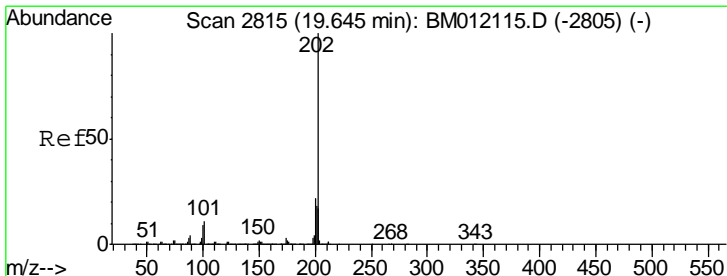
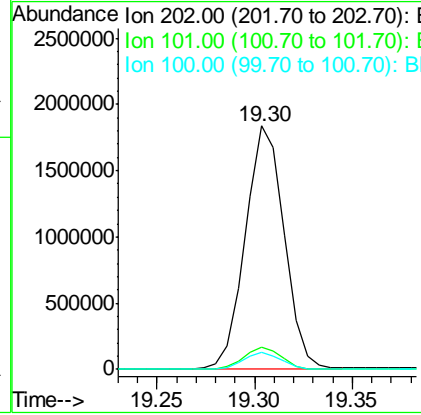
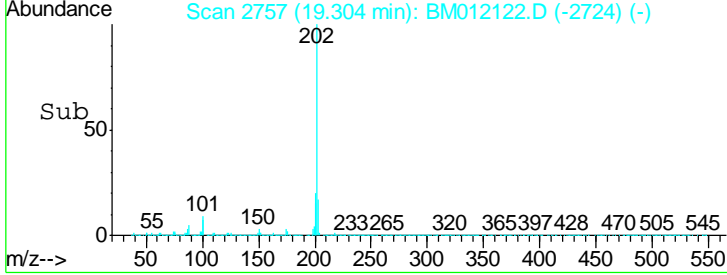


Tgt Ion: 202 Resp: 2521271

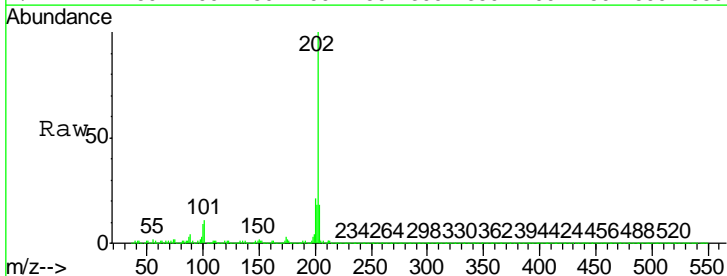
Ion	Ratio	Lower	Upper
202	100		
101	9.0	4.6	7.0#
100	7.3	3.4	5.2#

Manual Integrations
APPROVED

Sohil
 10/15/2017 12:37:04 PM

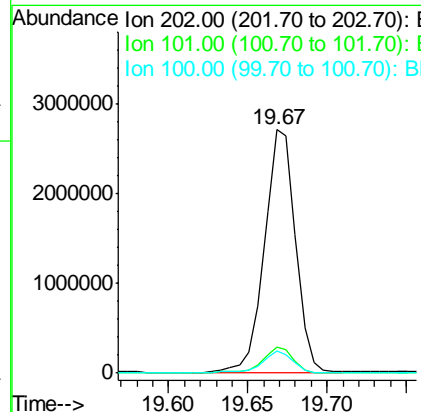
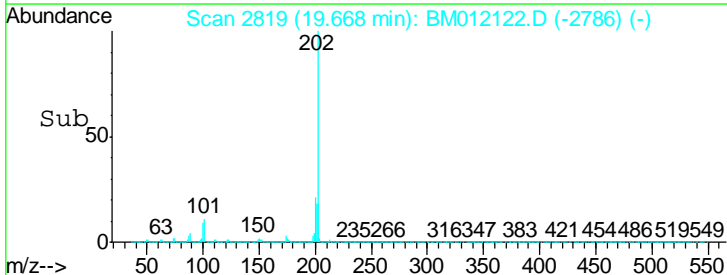


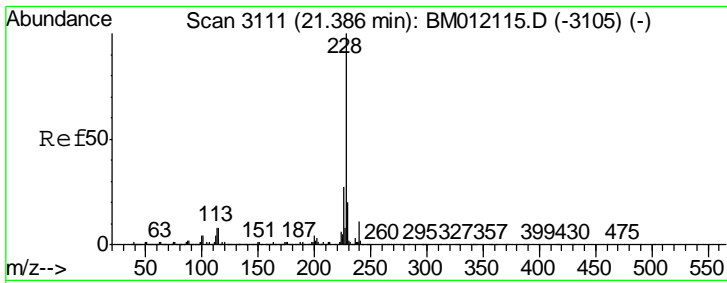
#77
 Pyrene
 Concen: 37.70 ng/ul
 RT: 19.67 min Scan# 2819
 Delta R.T. -0.01 min
 Lab File: BM012122.D
 Acq: 13 Oct 2017 05:16



Tgt Ion: 202 Resp: 3699879

Ion	Ratio	Lower	Upper
202	100		
101	10.6	5.1	7.7#
100	9.1	4.9	7.3#





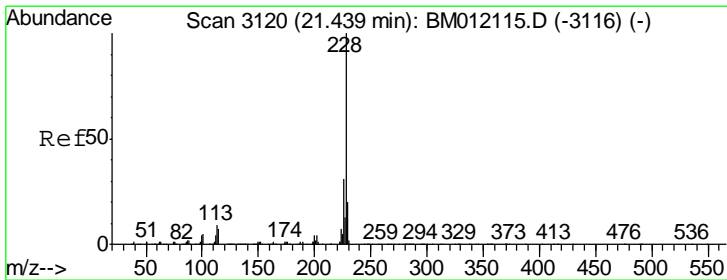
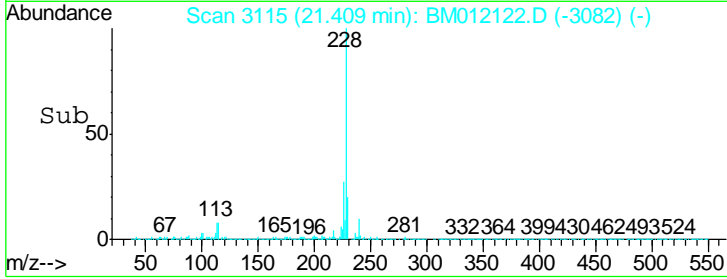
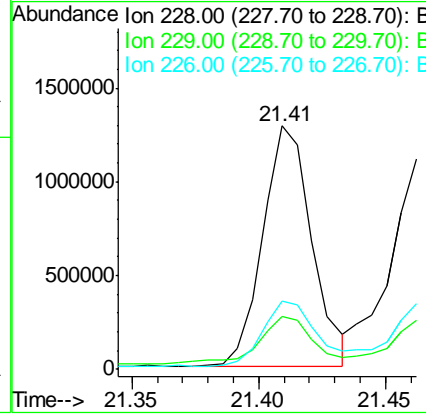
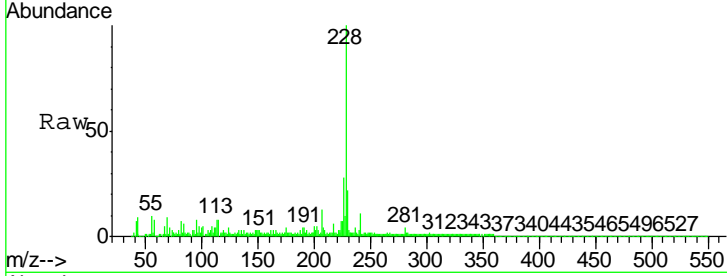
#80
 Benzo(a)anthracene
 Concen: 17.88 ng/ul
 RT: 21.41 min Scan# 3115
 Delta R.T. -0.01 min
 Lab File: BM012122.D
 Acq: 13 Oct 2017 05:16

Instrument :
 BNA_M
 ClientSampled :
 B-77(0-1)-092817MS

Tgt Ion	Resp	Lower	Upper
228	100		
229	21.9	15.4	23.0
226	28.3	21.4	32.0

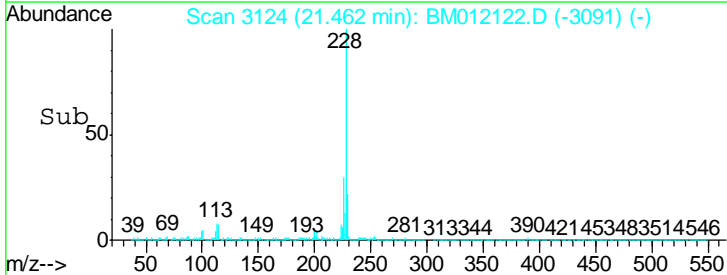
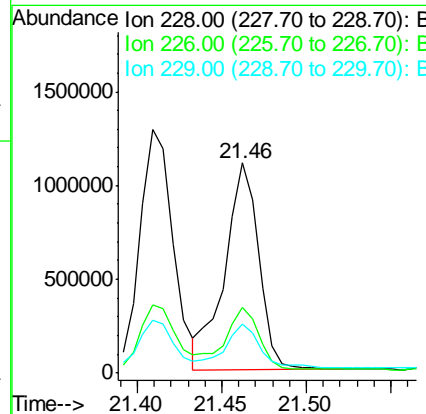
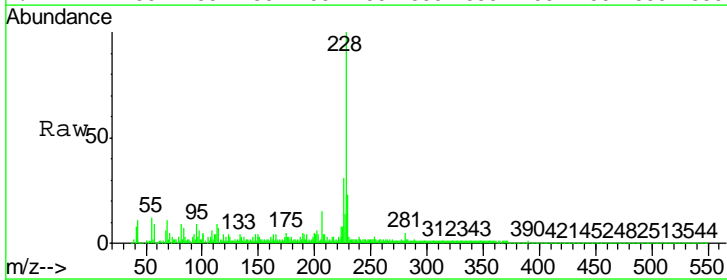
Manual Integrations
 APPROVED

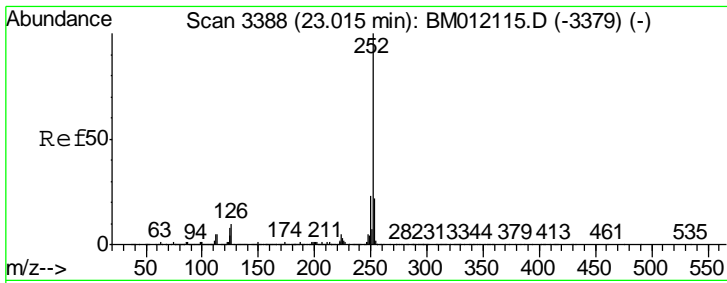
Sohil
 10/15/2017 12:37:04 PM



#82
 Chrysene
 Concen: 16.97 ng/ul
 RT: 21.46 min Scan# 3124
 Delta R.T. -0.01 min
 Lab File: BM012122.D
 Acq: 13 Oct 2017 05:16

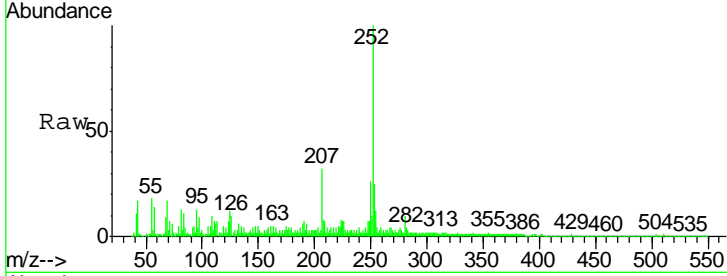
Tgt Ion	Resp	Lower	Upper
228	100		
226	31.4	23.4	35.2
229	23.3	15.5	23.3





#85
 Benzo(b)fluoranthene
 Concen: 19.64 ng/ul
 RT: 23.06 min Scan# 3395
 Delta R.T. -0.01 min
 Lab File: BM012122.D
 Acq: 13 Oct 2017 05:16

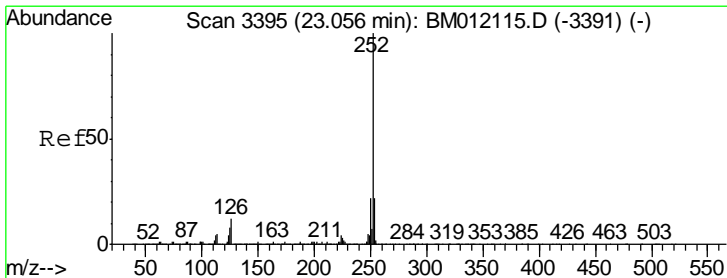
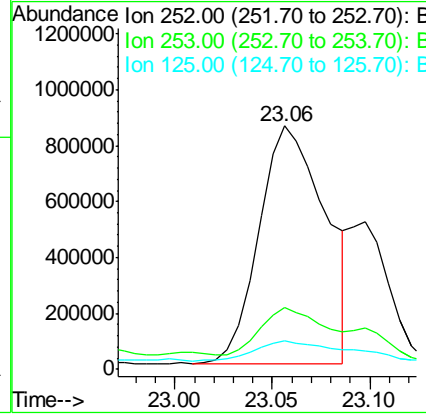
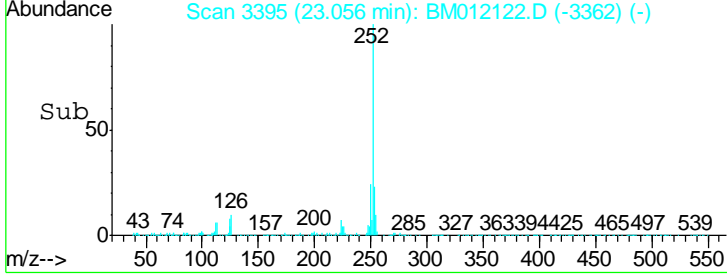
Instrument :
 BNA_M
 ClientSampleId :
 B-77(0-1)-092817MS



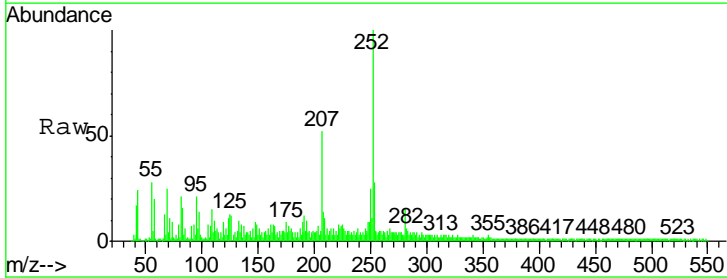
Tgt Ion	Resp	Lower	Upper
252	100		
253	25.3	17.9	26.9
125	11.7	3.6	5.4#

Manual Integrations
 APPROVED

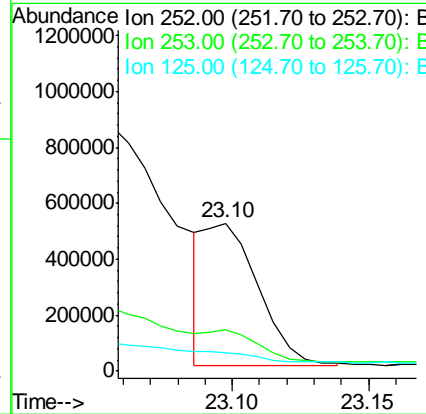
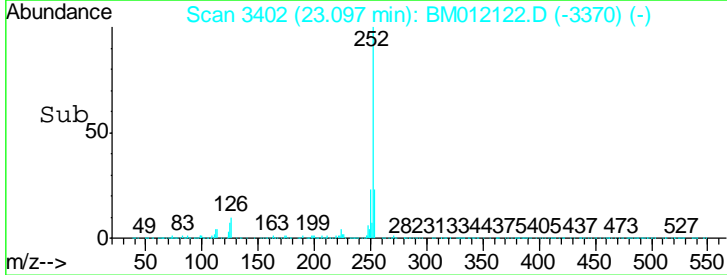
Sohil
 10/15/2017 12:37:04 PM

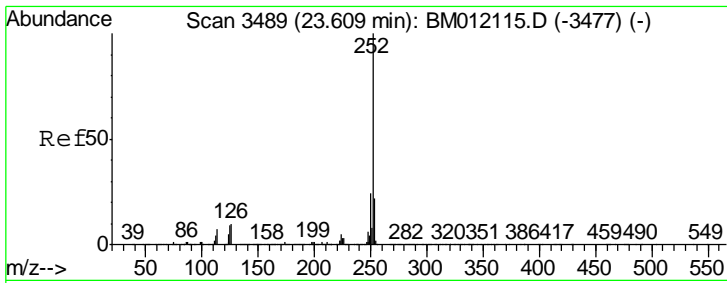


#86
 Benzo(k)fluoranthene
 Concen: 7.14 ng/ul m
 RT: 23.10 min Scan# 3402
 Delta R.T. -0.01 min
 Lab File: BM012122.D
 Acq: 13 Oct 2017 05:16



Tgt Ion	Resp	Lower	Upper
252	100		
253	27.6	17.1	25.7#
125	12.6	3.4	5.2#





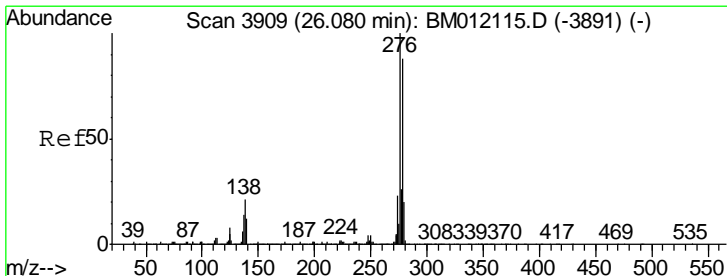
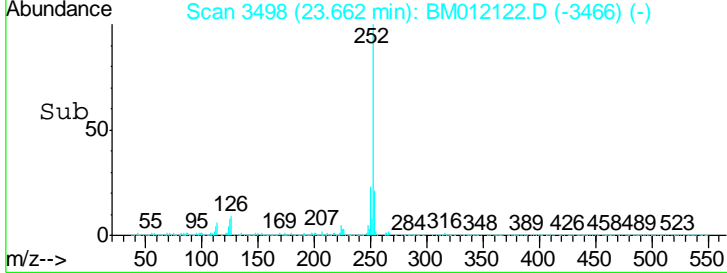
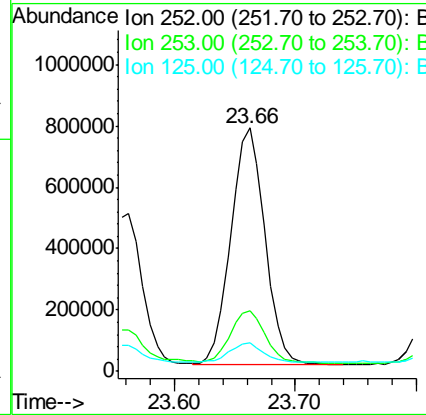
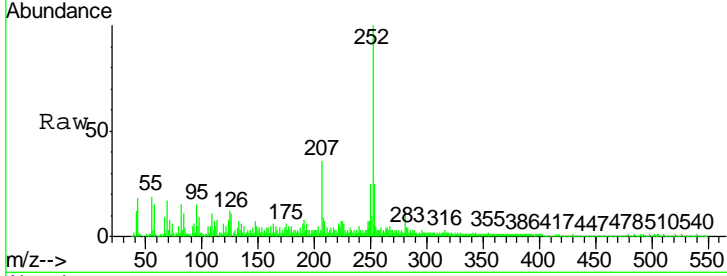
#88
 Benzo(a)pyrene
 Concen: 15.79 ng/ul
 RT: 23.66 min Scan# 3498
 Delta R.T. -0.01 min
 Lab File: BM012122.D
 Acq: 13 Oct 2017 05:16

Instrument :
 BNA_M
 Client Sampled :
 B-77(0-1)-092817MS

Tgt Ion	Resp	Lower	Upper
252	100		
253	25.0	18.2	27.2
125	11.7	4.0	6.0

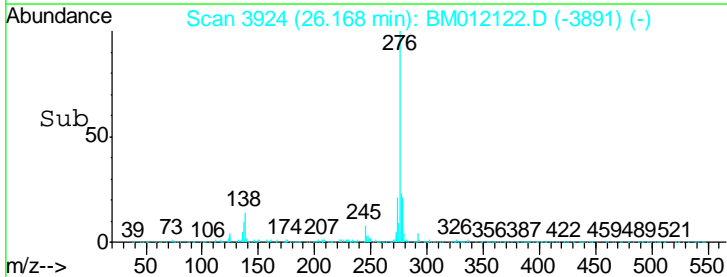
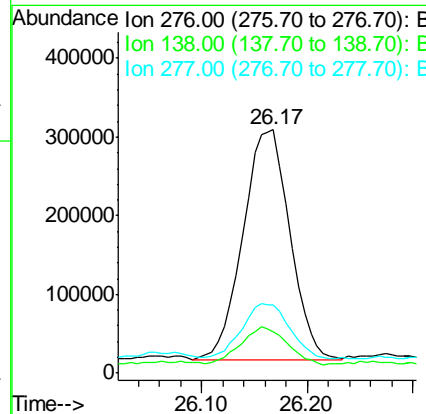
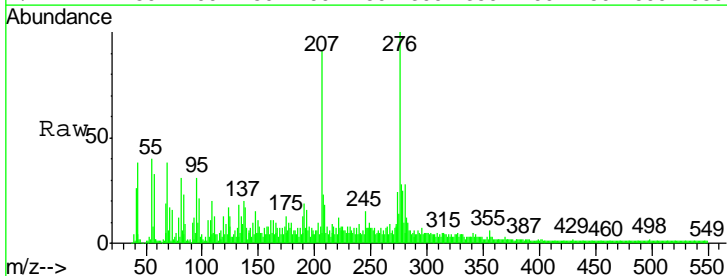
Manual Integrations
 APPROVED

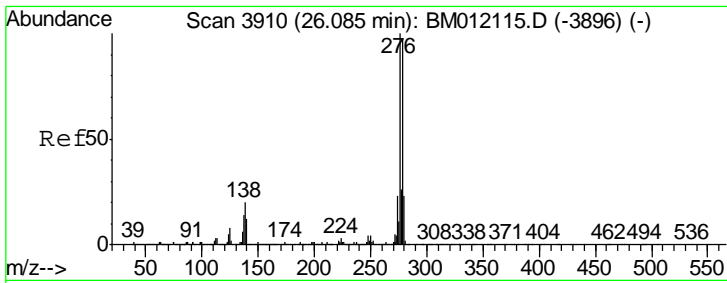
Sohil
 10/15/2017 12:37:04 PM



#89
 Indeno(1,2,3-cd)pyrene
 Concen: 8.80 ng/ul
 RT: 26.17 min Scan# 3924
 Delta R.T. -0.01 min
 Lab File: BM012122.D
 Acq: 13 Oct 2017 05:16

Tgt Ion	Resp	Lower	Upper
276	100		
138	16.9	9.3	13.9
277	28.2	19.9	29.9





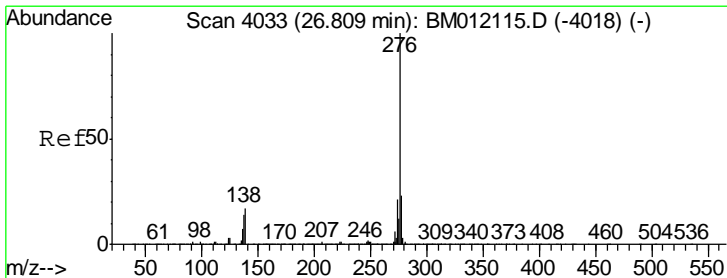
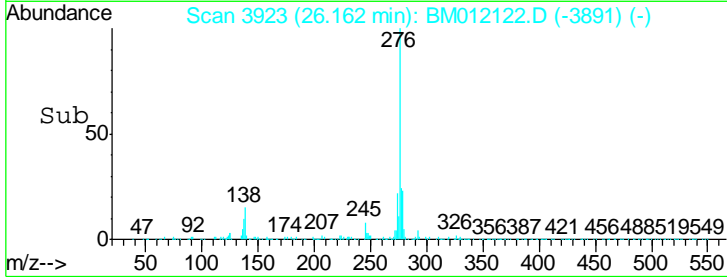
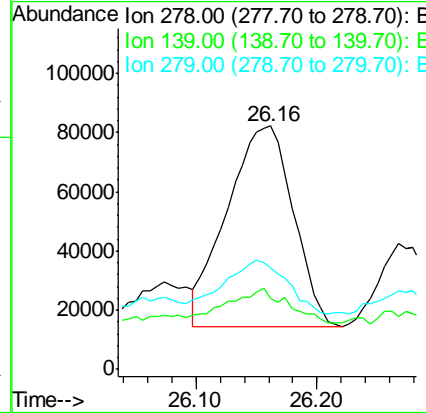
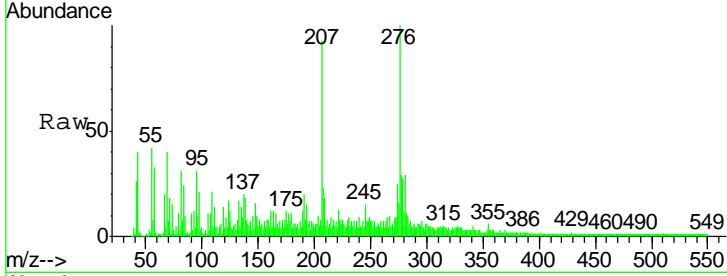
#90
 Dibenzo(a,h)anthracene
 Concen: 3.01 ng/ul
 RT: 26.16 min Scan# 3923
 Delta R.T. -0.01 min
 Lab File: BM012122.D
 Acq: 13 Oct 2017 05:16

Instrument :
 BNA_M
 ClientSampled :
 B-77(0-1)-092817MS

Tgt Ion	Ratio	Lower	Upper
278	100		
139	28.8	5.8	8.8#
279	41.7	18.6	27.8#

Manual Integrations
 APPROVED

Sohil
 10/15/2017 12:37:04 PM



#91
 Benzo(g,h,i)perylene
 Concen: 9.51 ng/ul
 RT: 26.90 min Scan# 4049
 Delta R.T. -0.02 min
 Lab File: BM012122.D
 Acq: 13 Oct 2017 05:16

Tgt Ion	Ratio	Lower	Upper
276	100		
138	18.8	8.5	12.7#
277	28.5	18.6	28.0#

