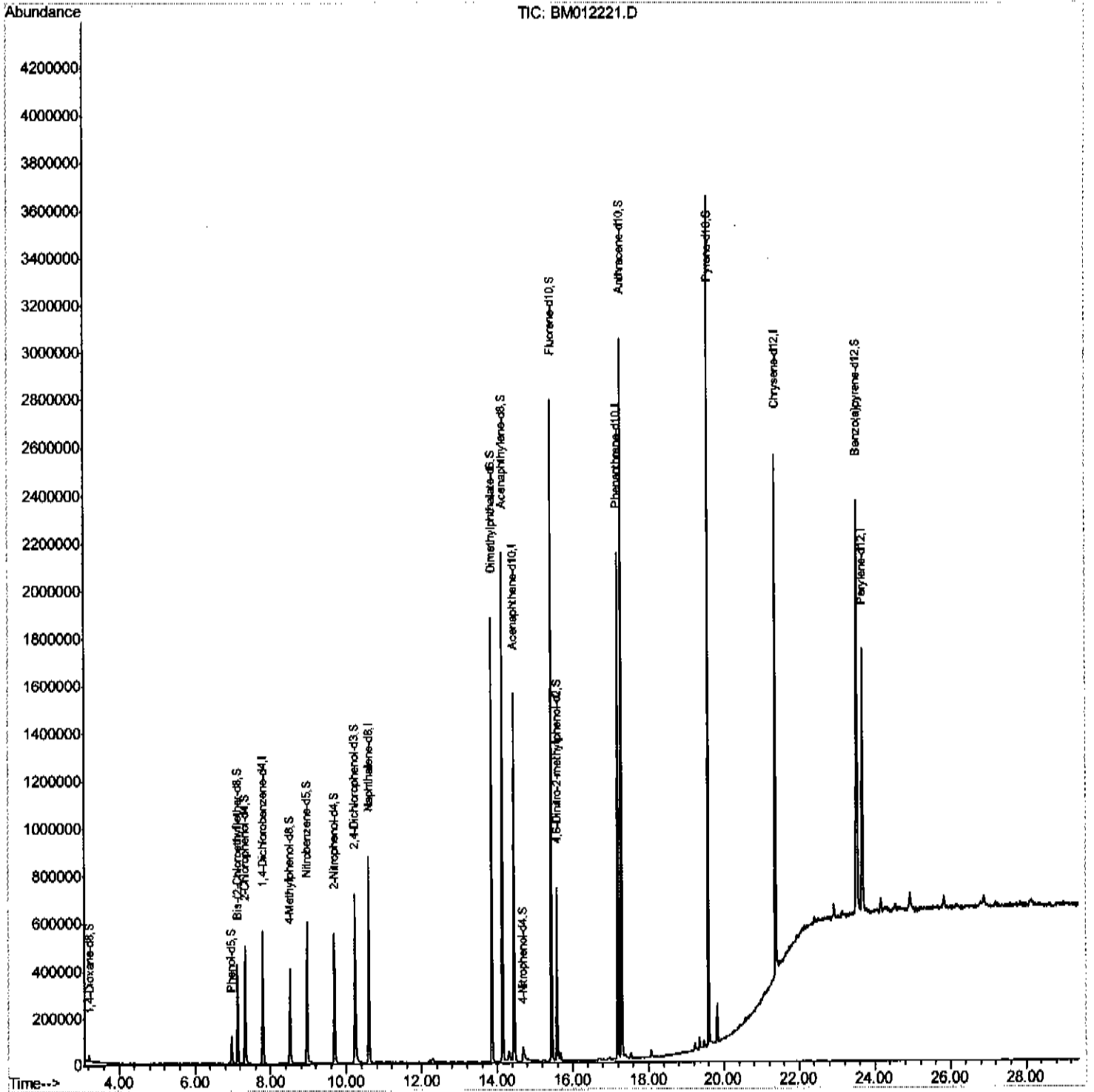


Data Path : Z:\HPCHEM1\BNA M\DATA\BM101617\
 Data File : BM012221.D
 Acq On : 16 Oct 2017. 18:29
 Operator : SJ/JU
 Sample : I5840-18
 Misc :
 ALS Vial : 7 Sample Multiplier: 1

Instrument :
 BNA_M
 ClientSampled :
 C0AF2

Manual Integrations
APPROVED
 Sohil
 10/17/2017 5:13:40 PM

Quant Time: Oct 17 00:15:37 2017
 Quant Method : Z:\HPCHEM1\BNA M\METHODS\SOM-EPA-BM101217.M
 Quant Title : SVOA CALIBRATION
 QLast Update : Mon Oct 16 23:37:16 2017
 Response via : Initial Calibration

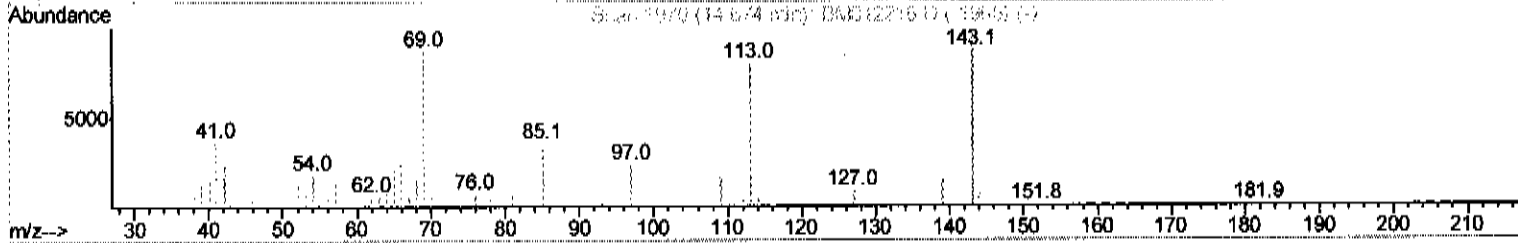
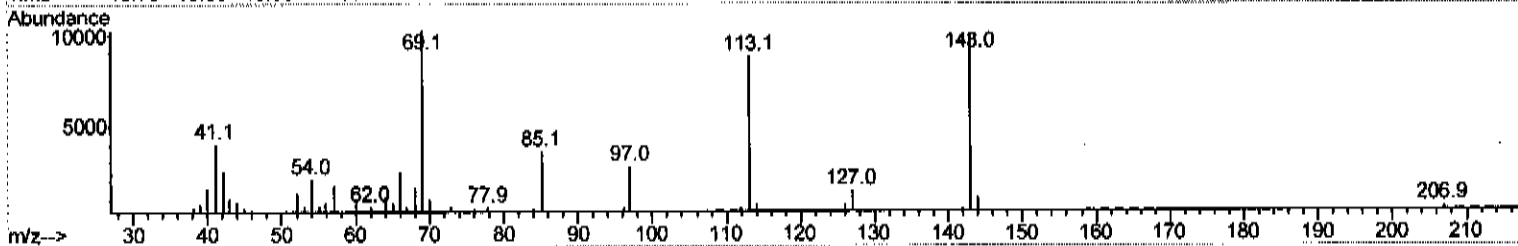
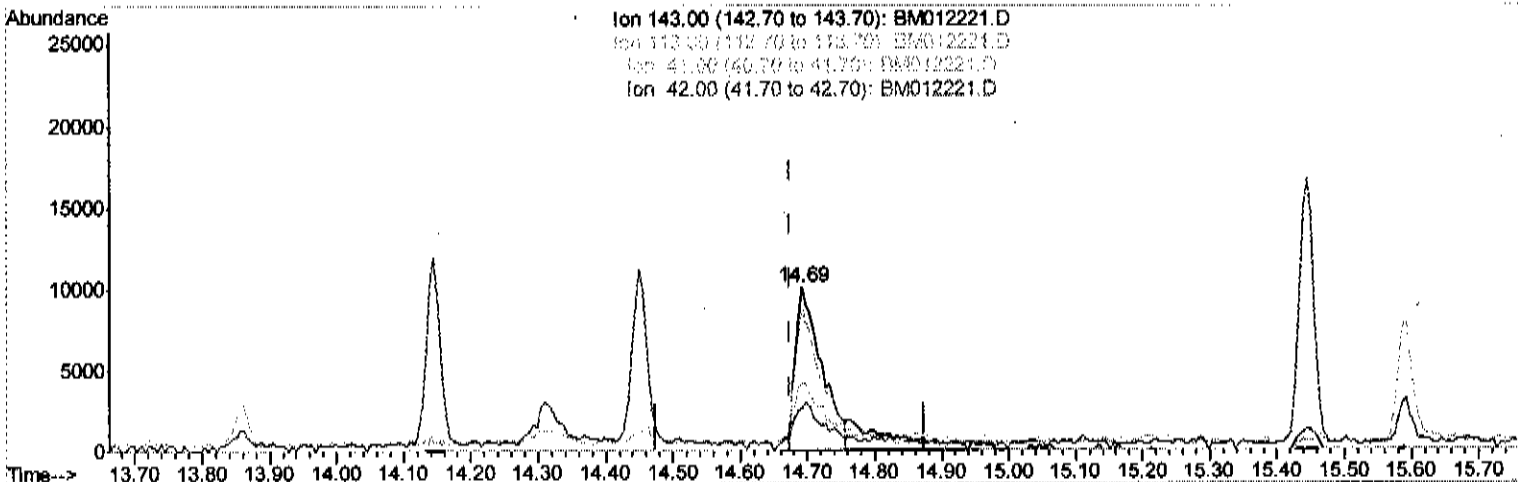


Data Path : Z:\HPCHEM1\BNA M\DATA\BM101617\
 Data File : BM012221.D
 Acq On : 16 Oct 2017 18:29
 Operator : SJ/JU
 Sample : I5840-18
 Misc :
 ALS Vial : 7 Sample Multiplier: 1

Instrument :
 BNA_M
 ClientSampled :
 COAF2

Manual Integrations
 APPROVED
 Sohil
 10/17/2017 5:13:40 PM

Quant Time: Oct 16 23:44:14 2017
 Quant Method : Z:\HPCHEM1\BNA M\METHODS\SOM-EPA-BM101217.M
 Quant Title : SVOA CALIBRATION
 QLast Update : Mon Oct 16 23:37:16 2017
 Response via : Initial Calibration



TIC: BM012221.D

(51) 4-Nitrophenol-d4 (S)
 14.692min (+0.018) 3.97ng/ul
 response 27251

Ion	Exp%	Act%
143.00	100	100
113.00	81.80	87.49
41.00	40.00	40.46
42.00	25.70	25.37

Quantitation Report (Qedit)

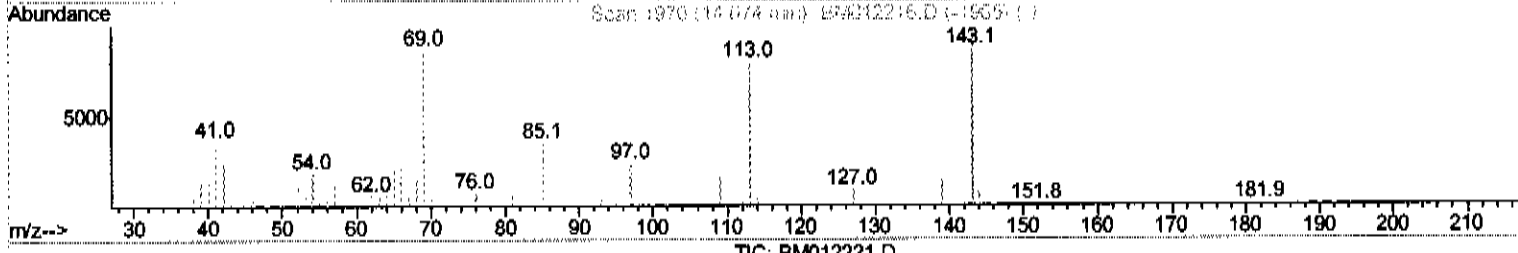
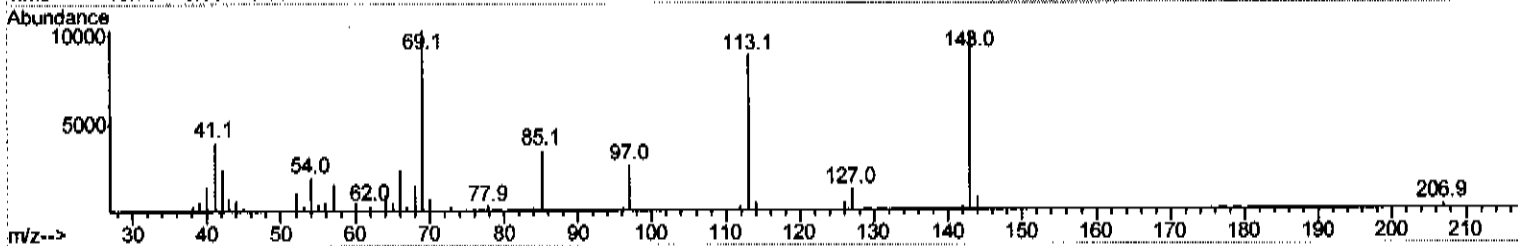
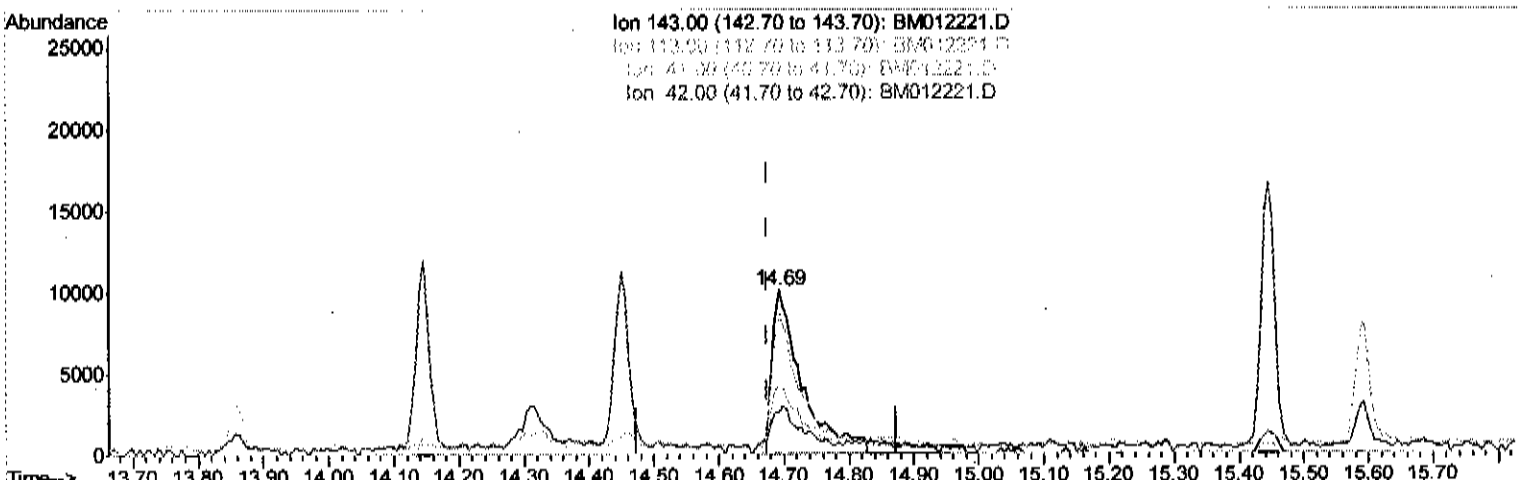
Data Path : Z:\HPCHEM1\BNA M\DATA\BM101617\
 Data File : BM012221.D
 Acq On : 16 Oct 2017 18:29
 Operator : SJ/JU
 Sample : I5840-18
 Misc :
 ALS Vial : 7 Sample Multiplier: 1

Instrument :
 BNA_M
 ClientSampled :
 COAF2

Manual Integrations
 APPROVED

Sohil
 10/17/2017 5:13:40 PM

Quant Time: Oct 16 23:44:14 2017
 Quant Method : Z:\HPCHEM1\BNA M\METHODS\SOM-EPA-BM101217.M
 Quant Title : SVOA CALIBRATION
 QLast Update : Mon Oct 16 23:37:16 2017
 Response via : Initial Calibration



TIC: BM012221.D

(51) 4-Nitrophenol-d4 (S)

14.692min (+0.018) 4.68ng/ul m

SJ 10/17/17

response 32092

Ion	Exp%	Act%
143.00	100	100
113.00	81.80	87.49
41.00	40.00	40.46
42.00	25.70	25.37

Data Path : Z:\HPCHEM1\BNA M\DATA\BM101617\
 Data File : BM012221.D
 Acq On : 16 Oct 2017 18:29
 Operator : SJ/JU
 Sample : I5840-18
 Misc :
 ALS Vial : 7 Sample Multiplier: 1

Instrument :
 BNA_M
 ClientSampled :
 COAF2

Manual Integrations
 APPROVED
 Sohil
 10/17/2017 5:13:40 PM

Quant Time: Oct 17 00:15:37 2017
 Quant Method : Z:\HPCHEM1\BNA M\METHODS\SOM-EPA-BM101217.M
 Quant Title : SVOA CALIBRATION
 QLast Update : Mon Oct 16 23:37:16 2017
 Response via : Initial Calibration

Internal Standards	R.T.	QIon	Response	Conc	Units	Dev(Min)
1) 1,4-Dichlorobenzene-d4	7.80	152	158152	20.00	ng/ul	0.00
18) Naphthalene-d8	10.60	136	717702	20.00	ng/ul	0.00
35) Acenaphthene-d10	14.45	164	516323	20.00	ng/ul	0.00
61) Phenanthrene-d10	17.20	188	1262524	20.00	ng/ul	0.00
75) Chrysene-d12	21.38	240	1164959	20.00	ng/ul	0.00
83) Perylene-d12	23.69	264	912528	20.00	ng/ul	0.00

System Monitoring Compounds	R.T.	QIon	Response	Conc	Units	Dev(Min)
3) 1,4-Dioxane-d8	3.22	96	13472	4.05	ng/uL	0.00
5) Phenol-d5	6.97	99	78863	6.15	ng/ul	0.00
7) Bis-(2-Chloroethyl)ether-d	7.13	67	184277	23.95	ng/ul	0.00
9) 2-Chlorophenol-d4	7.33	132	242766	22.30	ng/ul	0.00
13) 4-Methylphenol-d8	8.52	113	168234	15.23	ng/ul	0.00
19) Nitrobenzene-d5	8.97	128	148968	27.20	ng/ul	0.00
22) 2-Nitrophenol-d4	9.69	143	187587	29.31	ng/ul	0.00
26) 2,4-Dichlorophenol-d3	10.23	165	331377	27.12	ng/ul	0.00
29) 4-Chloroaniline-d4	10.77	131	236	0.02	ng/ul	0.02
43) Dimethylphthalate-d6	13.86	166	1317945	28.88	ng/ul	0.00
46) Acenaphthylene-d8	14.14	160	1503997	27.23	ng/ul	0.00
51) 4-Nitrophenol-d4	14.69	143	32092m	4.68	ng/ul	0.02
57) Fluorene-d10	15.44	176	1092274	29.16	ng/ul	0.00
62) 4,6-Dinitro-2-methylphenol	15.59	200	196855	22.72	ng/ul	0.00
70) Anthracene-d10	17.30	188	1716575	27.50	ng/ul	0.00
76) Pvrene-d10	19.59	212	1937053	32.76	ng/ul	0.00
87) Benzo(a)pyrene-d12	23.54	264	1236676	28.11	ng/ul	0.00

→ 10/10/17/17

Target Compounds Ovalue

(#) = qualifier out of range (m) = manual integration (+) = signals summed