

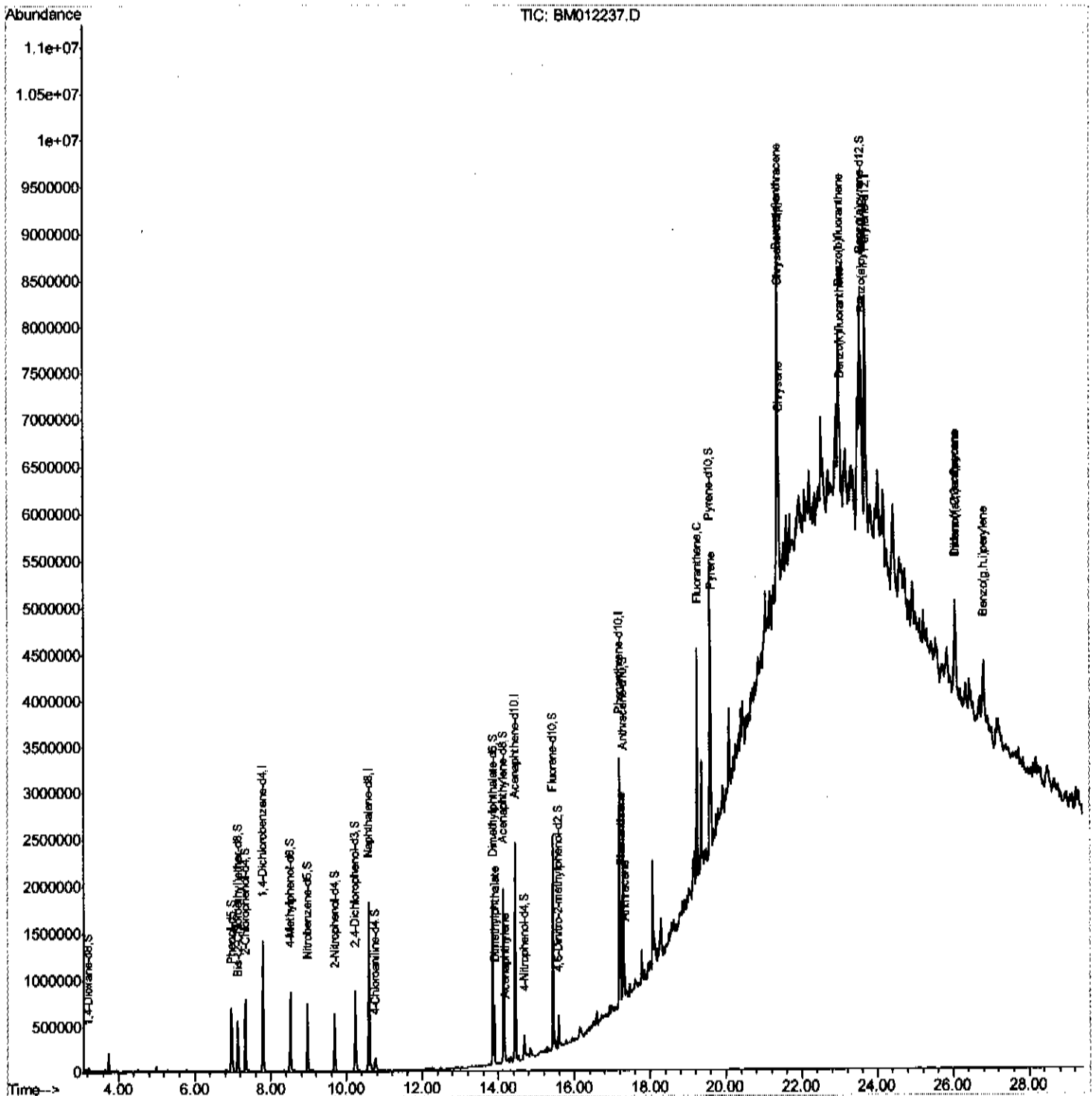
Data Path : Z:\HPCHEM1\BNA M\DATA\BM101617\
 Data File : BM012237.D
 Acq On : 17 Oct 2017 04:10
 Operator : SJ/JU
 Sample : I5548-17RE
 Misc :
 ALS Vial : 22 Sample Multiplier: 1

Instrument :
 BNA_M
 ClientSampled :
 C0AF7RE

Manual Integrations
 APPROVED

Sohil
 10/17/2017 5:13:53 PM

Quant Time: Oct 17 06:45:17 2017
 Quant Method : Z:\HPCHEM1\BNA M\METHODS\SOM-EPA-BM101217.M
 Quant Title : SVOA CALIBRATION
 QLast Update : Tue Oct 17 02:52:50 2017
 Response via : Initial Calibration



Quantitation Report (Qedit)

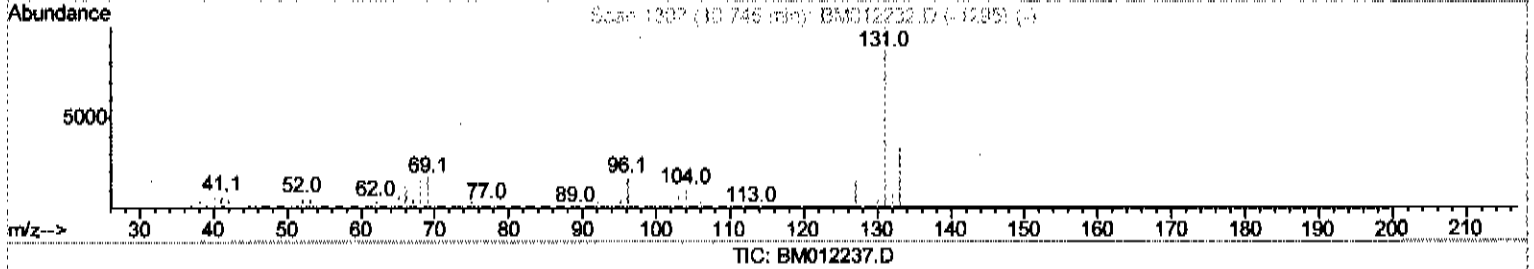
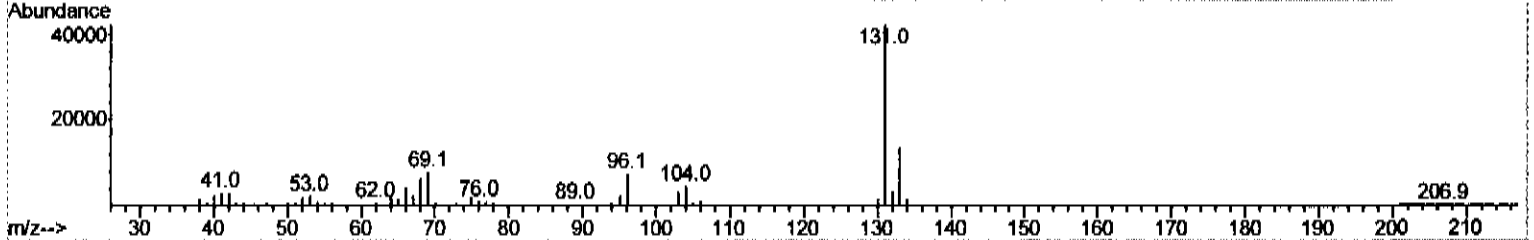
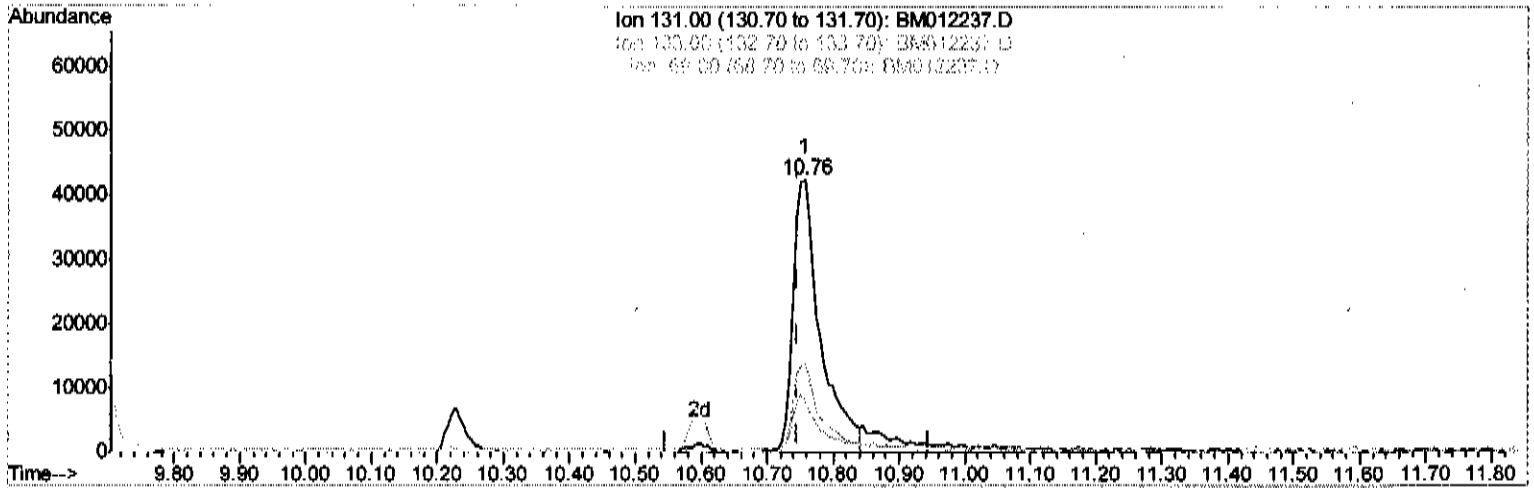
Data Path : Z:\HPCHEM1\BNA M\DATA\BM101617\
 Data File : BM012237.D
 Acq On : 17 Oct 2017 04:10
 Operator : SJ/JU
 Sample : I5548-17RE
 Misc :
 ALS Vial : 22 Sample Multiplier: 1

Instrument :
 BNA_M
 ClientSampled :
 C0AF7RE

Manual Integrations
 APPROVED

Sohil
 10/17/2017 5:13:53 PM

Quant Time: Oct 17 05:58:37 2017
 Quant Method : Z:\HPCHEM1\BNA M\METHODS\SOM-EPA-BM101217.M
 Quant Title : SVOA CALIBRATION
 QLast Update : Tue Oct 17 02:52:50 2017
 Response via : Initial Calibration



(29) 4-Chloroaniline-d4 (S)
 10.757min (+0.012) 4.99ng/ul
 response 121213

Ion	Exp%	Act%
131.00	100	100
133.00	31.40	32.18
69.00	17.40	18.70
0.00	0.00	0.00

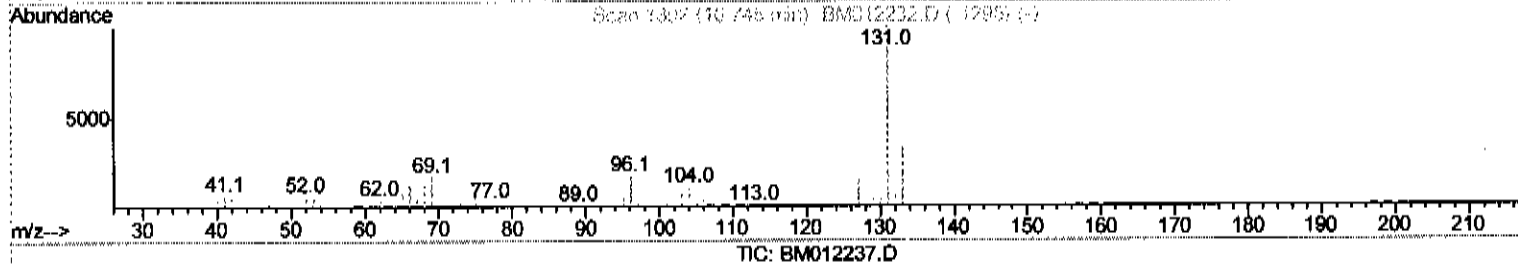
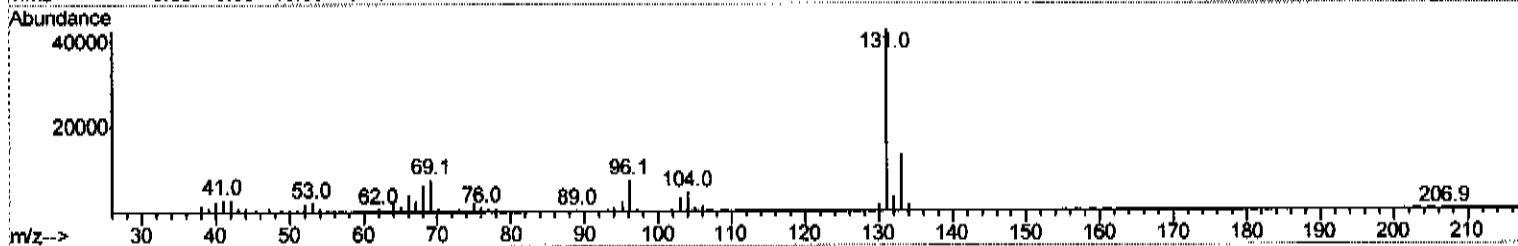
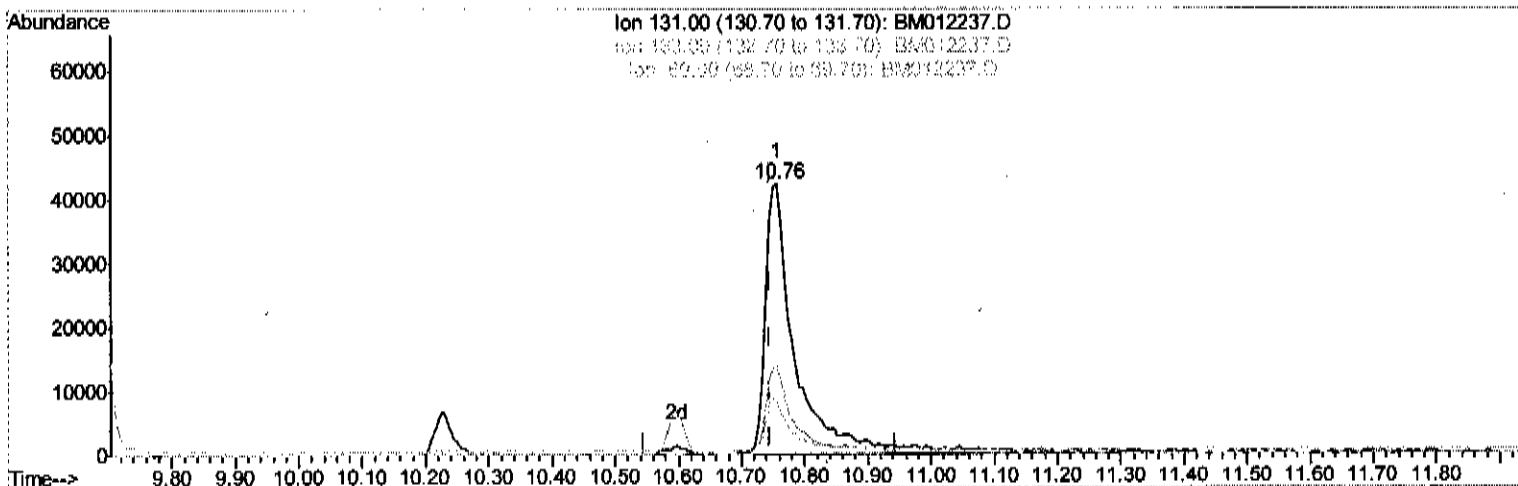
Quantitation Report (Qedit)

Data Path : Z:\HPCHEM1\BNA M\DATA\BM101617\
 Data File : BM012237.D
 Acq On : 17 Oct 2017 04:10
 Operator : SJ/JU
 Sample : I5548-17RE
 Misc :
 ALS Vial : 22 Sample Multiplier: 1

Instrument :
 BNA_M
 ClientSampleId :
 COAF7RE

Manual Integrations
APPROVED
 Sohil
 10/17/2017 5:13:53 PM

Quant Time: Oct 17 05:58:37 2017
 Quant Method : Z:\HPCHEM1\BNA M\METHODS\SOM-EPA-BM101217.M
 Quant Title : SVOA CALIBRATION
 QLast Update : Tue Oct 17 02:52:50 2017
 Response via : Initial Calibration



TIC: BM012237.D

(29) 4-Chloroaniline-d4 (S)

10.757min (+0.012) 5.48ng/ul m *SJ 10/17/17*

response 133134

Ion	Exp%	Act%
131.00	100	100
133.00	31.40	32.18
69.00	17.40	18.70
0.00	0.00	0.00

Quantitation Report (Qedit)

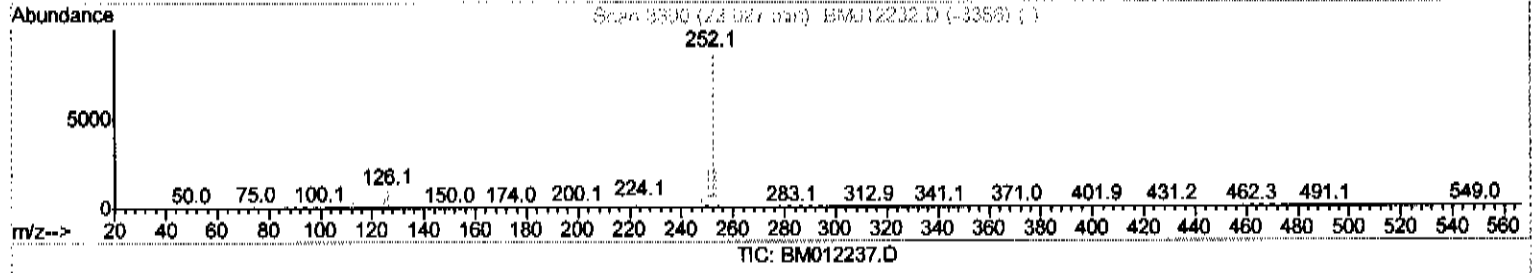
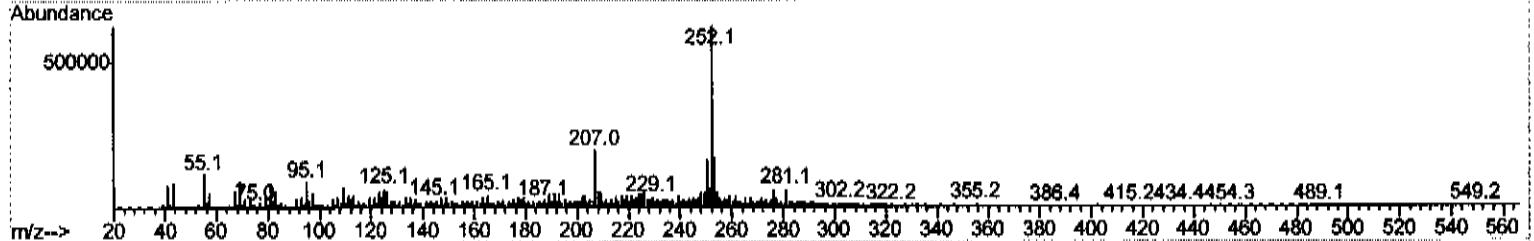
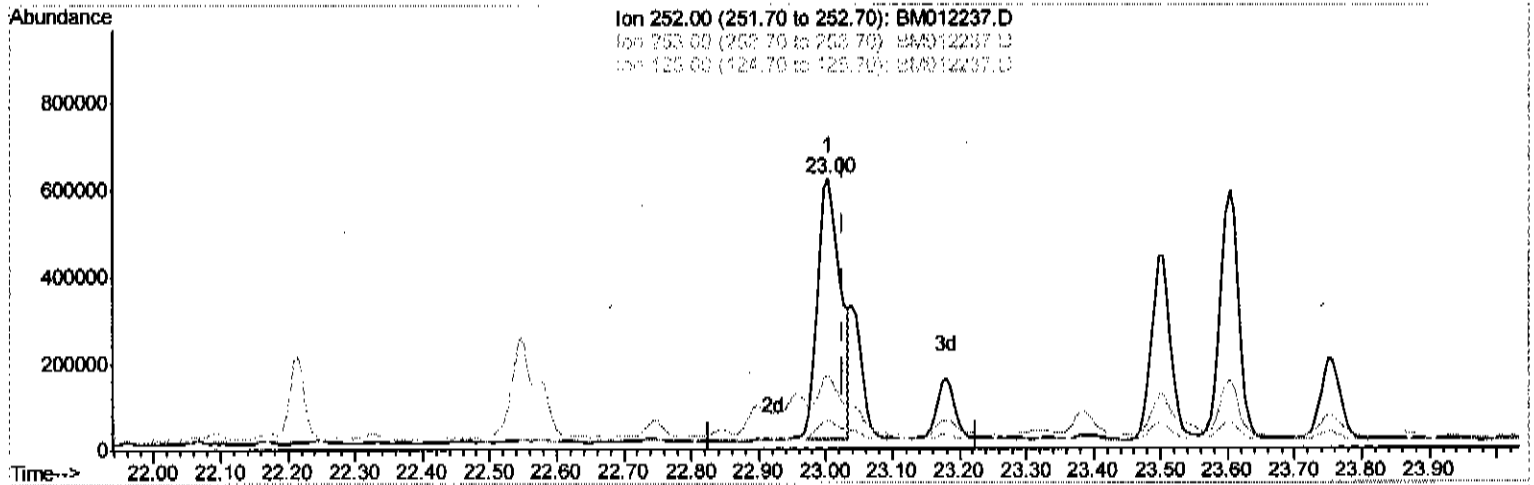
Data Path : Z:\HPCHEM1\BNA M\DATA\BM101617\
 Data File : BM012237.D
 Acq On : 17 Oct 2017 04:10
 Operator : SJ/JU
 Sample : I5548-17RE
 Misc :
 ALS Vial : 22 Sample Multiplier: 1

Instrument :
 BNA_M
 ClientSampled :
 COAF7RE

Manual Integrations
 APPROVED

Sohil
 10/17/2017 5:13:53 PM

Quant Time: Oct 17 06:43:32 2017
 Quant Method : Z:\HPCHEM1\BNA M\METHODS\SOM-EPA-BM101217.M
 Quant Title : SVOA CALIBRATION
 QLast Update : Tue Oct 17 02:52:50 2017
 Response via : Initial Calibration



(86) Benzo(k)fluoranthene

23.003min (-0.023) 12.24ng/ul

response 1455508

Ion	Exp%	Act%
252.00	100	100
253.00	22.20	27.35#
125.00	6.10	10.36#
0.00	0.00	0.00

Quantitation Report (Qedit)

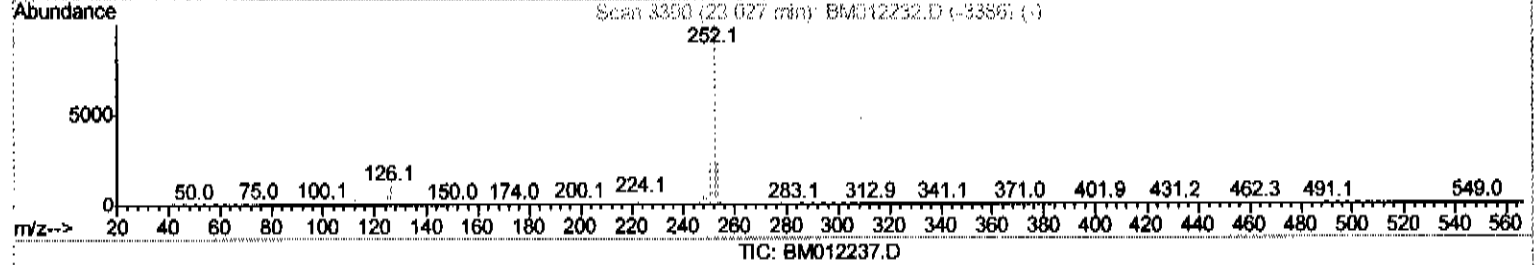
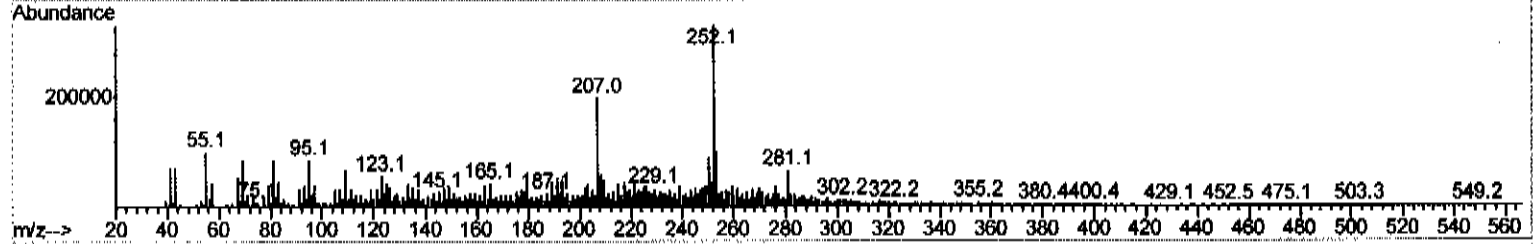
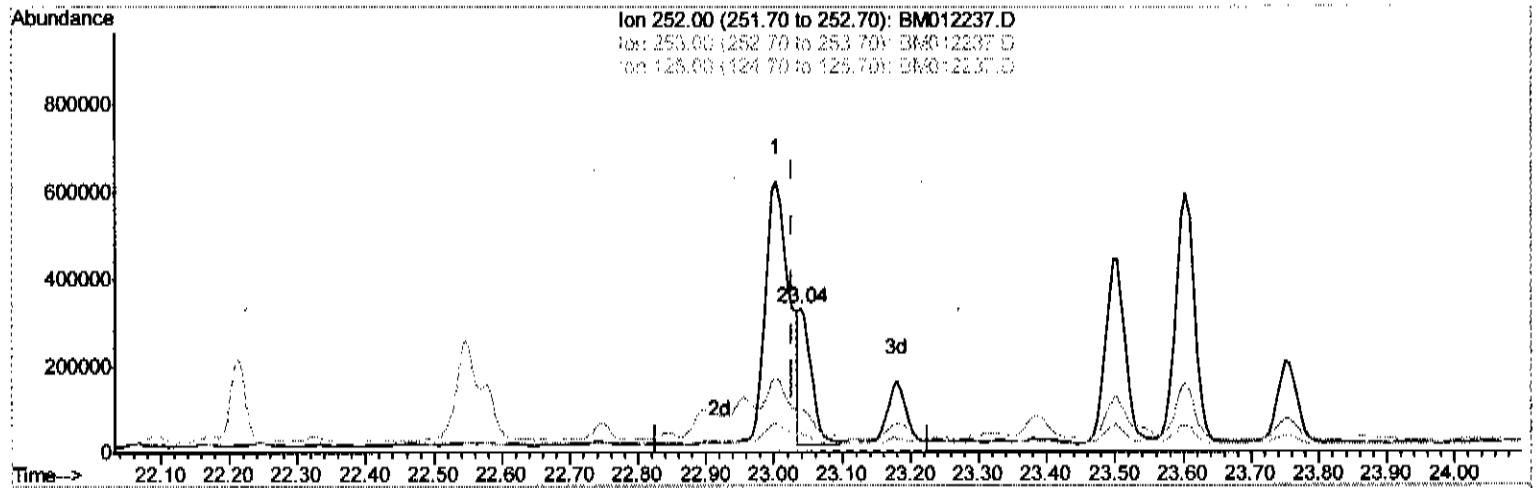
Data Path : Z:\HPCHEM1\BNA M\DATA\BM101617\
 Data File : BM012237.D
 Acq On : 17 Oct 2017 04:10
 Operator : SJ/JU
 Sample : I5548-17RE
 Misc :
 ALS Vial : 22 Sample Multiplier: 1

Instrument :
 BNA_M
 ClientSampled :
 C0AF7RE

Manual Integrations
 APPROVED

Sohil
 10/17/2017 5:13:53 PM

Quant Time: Oct 17 06:43:32 2017
 Quant Method : Z:\HPCHEM1\BNA M\METHODS\SOM-EPA-BM101217.M
 Quant Title : SVOA CALIBRATION
 QLast Update : Tue Oct 17 02:52:50 2017
 Response via : Initial Calibration



TIC: BM012237.D

(86) Benzo(k)fluoranthene

23.039min (+0.012) 3.35ng/ul m *SJ 10/17/17*

response 398561

Ion	Exp%	Act%
252.00	100	100
253.00	22.20	30.32#
125.00	6.10	12.86#
0.00	0.00	0.00

Data Path : Z:\HPCHEM1\BNA M\DATA\BM101617\
 Data File : BM012237.D
 Acq On : 17 Oct 2017 04:10
 Operator : SJ/JU
 Sample : I5548-17RE
 Misc :
 ALS Vial : 22 Sample Multiplier: 1

Instrument :
 BNA_M
 ClientSampled :
 COAF7RE

Manual Integrations
 APPROVED
 Sohil
 10/17/2017 5:13:53 PM

Quant Time: Oct 17 06:45:17 2017
 Quant Method : Z:\HPCHEM1\BNA M\METHODS\SOM-EPA-BM101217.M
 Quant Title : SVOA CALIBRATION
 QLast Update : Tue Oct 17 02:52:50 2017
 Response via : Initial Calibration

Internal Standards	R.T.	QIon	Response	Conc	Units	Dev(Min)
1) 1,4-Dichlorobenzene-d4	7.79	152	395530	20.00	ng/ul	0.00
18) Naphthalene-d8	10.59	136	1523967	20.00	ng/ul	0.00
35) Acenaphthene-d10	14.45	164	779188	20.00	ng/ul	0.00
61) Phenanthrene-d10	17.20	188	1507166	20.00	ng/ul	0.00
75) Chrysene-d12	21.39	240	1729368	20.00	ng/ul	0.00
83) Perylene-d12	23.70	264	1890811	20.00	ng/ul	0.02

System Monitoring Compounds

3) 1,4-Dioxane-d8	3.22	96	18180	2.18	ng/uL	0.00
5) Phenol-d5	6.96	99	428316	13.35	ng/ul	0.00
7) Bis-(2-Chloroethyl)ether-d	7.12	67	241520	12.55	ng/ul	0.00
9) 2-Chlorophenol-d4	7.33	132	391558	14.38	ng/ul	0.00
13) 4-Methylphenol-d8	8.51	113	356506	12.90	ng/ul	0.00
19) Nitrobenzene-d5	8.96	128	185117	15.92	ng/ul	0.00
22) 2-Nitrophenol-d4	9.69	143	222265	16.36	ng/ul	0.00
26) 2,4-Dichlorophenol-d3	10.23	165	416611	16.06	ng/ul	0.00
29) 4-Chloroaniline-d4	10.76	131	133134m	5.48	ng/ul	0.01
43) Dimethylphthalate-d6	13.86	166	1195762	17.36	ng/ul	0.00
46) Acenaphthylene-d8	14.14	160	1405233	16.86	ng/ul	0.00
51) 4-Nitrophenol-d4	14.68	143	104939	10.14	ng/ul	0.00
57) Fluorene-d10	15.44	176	925808	16.38	ng/ul	0.00
62) 4,6-Dinitro-2-methylphenol	15.59	200	99170	9.59	ng/ul	0.00
70) Anthracene-d10	17.30	188	1304178	17.50	ng/ul	0.00
76) Pyrene-d10	19.59	212	1455589	16.58	ng/ul	0.00
87) Benzo(a)pyrene-d12	23.56	264	1599242	17.54	ng/ul	0.02

→ 10/17/17

Target Compounds

Target Compounds	R.T.	QIon	Response	Conc	Units	Ovalue
44) Dimethylphthalate	13.90	163	411685	5.967	ng/ul	99
47) Acenaphthylene	14.17	152	140648	1.718	ng/ul	94
69) Phenanthrene	17.24	178	588514	6.864	ng/ul	99
71) Anthracene	17.33	178	239666	2.700	ng/ul	96
74) Fluoranthene	19.26	202	1432787	13.847	ng/ul	98
77) Pyrene	19.62	202	1337364	11.710	ng/ul	98
80) Benzo(a)anthracene	21.37	228	856179	7.609	ng/ul#	91
82) Chrysene	21.42	228	905464	8.570	ng/ul#	90
85) Benzo(b)fluoranthene	23.00	252	1455508	11.796	ng/ul#	88
86) Benzo(k)fluoranthene	23.04	252	398561m	3.352	ng/ul	89
88) Benzo(a)pyrene	23.60	252	1105332	9.504	ng/ul#	89
89) Indeno(1,2,3-cd)pyrene	26.08	276	867669	7.026	ng/ul	97
90) Dibenzo(a,h)anthracene	26.07	278	217489	2.095	ng/ul#	61
91) Benzo(a,h,i)perylene	26.81	276	870131	8.602	ng/ul	93

→ 10/17/17

(#) = qualifier out of range (m) = manual integration (+) = signals summed