

Data Path : Z:\SVOASRV\HPCHEM1\BNA M\DATA\BM101619\
 Data File : BM023218.D
 Acq On : 17 Oct 2019 12:50
 Operator : JU
 Sample : K5262-21
 Misc :
 ALS Vial : 25 Sample Multiplier: 1

Instrument :
 BNA_M
 ClientSampleId :

Quant Time: Oct 17 14:35:22 2019
 Quant Method : Z:\SVOASRV\HPCHEM1\BNA_M\METHODS\SOM-EPA-BM101419MA.M
 Quant Title : SVOA CALIBRATION
 QLast Update : Thu Oct 17 12:33:14 2019
 Response via : Initial Calibration

| Internal Standards | R.T. | QIon | Response | Conc | Units | Dev(Min) |
|---------------------------|-------|------|----------|-------|-------|----------|
| 1) 1,4-Dichlorobenzene-d4 | 7.66 | 152 | 416081 | 20.00 | ng/ul | 0.00 |
| 18) Naphthalene-d8 | 10.45 | 136 | 1561173 | 20.00 | ng/ul | 0.00 |
| 36) Acenaphthene-d10 | 14.31 | 164 | 922368 | 20.00 | ng/ul | 0.00 |
| 62) Phenanthrene-d10 | 17.06 | 188 | 1806310 | 20.00 | ng/ul | 0.01 |
| 78) Chrysene-d12 | 21.28 | 240 | 1766998 | 20.00 | ng/ul | 0.04 |
| 86) Perylene-d12 | 23.47 | 264 | 53502 | 20.00 | ng/ul | 0.02 |

System Monitoring Compounds

| | | | | | | |
|--------------------------------|-------|-----|---------|---------|-------|------|
| 3) 1,4-Dioxane-d8 | 3.18 | 96 | 31395 | 3.32 | ng/uL | 0.00 |
| 5) Phenol-d5 | 6.84 | 99 | 692882 | 19.12 | ng/ul | 0.00 |
| 7) Bis-(2-Chloroethyl)ether-d | 7.00 | 67 | 382646 | 18.66 | ng/ul | 0.00 |
| 9) 2-Chlorophenol-d4 | 7.20 | 132 | 556454 | 20.06 | ng/ul | 0.00 |
| 13) 4-Methylphenol-d8 | 8.37 | 113 | 535059 | 18.38 | ng/ul | 0.00 |
| 19) Nitrobenzene-d5 | 8.81 | 128 | 244023 | 23.10 | ng/ul | 0.00 |
| 22) 2-Nitrophenol-d4 | 9.53 | 143 | 265463 | 26.40 | ng/ul | 0.00 |
| 26) 2,4-Dichlorophenol-d3 | 10.07 | 165 | 556533 | 21.76 | ng/ul | 0.00 |
| 29) 4-Chloroaniline-d4 | 10.58 | 131 | 154786 | 4.97 | ng/ul | 0.00 |
| 44) Dimethylphthalate-d6 | 13.73 | 166 | 1575274 | 22.29 | ng/ul | 0.00 |
| 47) Acenaphthylene-d8 | 14.00 | 160 | 1887655 | 22.77 | ng/ul | 0.00 |
| 52) 4-Nitrophenol-d4 | 14.51 | 143 | 199008 | 17.39 | ng/ul | 0.01 |
| 58) Fluorene-d10 | 15.31 | 176 | 1368431 | 22.72 | ng/ul | 0.00 |
| 63) 4,6-Dinitro-2-methylphenol | 15.43 | 200 | 41001 | 5.73 | ng/ul | 0.02 |
| 71) Anthracene-d10 | 17.16 | 188 | 2044844 | 23.48 | ng/ul | 0.01 |
| 79) Pyrene-d10 | 19.47 | 212 | 2277743 | 26.62 | ng/ul | 0.02 |
| 90) Benzo(a)pyrene-d12 | 23.40 | 264 | 2941382 | 1084.56 | ng/ul | 0.09 |

Target Compounds

| | | | | | Ovalue | |
|--------------------------------|-------|-----|----------|---------|--------|-----|
| 6) Phenol | 6.86 | 94 | 205818 | 5.507 | ng/ul | 99 |
| 11) 2-Methylphenol | 8.11 | 108 | 43231 | 1.509 | ng/ul | 93 |
| 16) 4-Methylphenol | 8.43 | 108 | 125594 | 4.032 | ng/ul | 96 |
| 24) 2,4-Dimethylphenol | 9.63 | 107 | 43719 | 1.421 | ng/ul | 97 |
| 28) Naphthalene | 10.50 | 128 | 3619009 | 44.850 | ng/ul | 98 |
| 34) 2-Methylnaphthalene | 12.12 | 142 | 1038870 | 17.302 | ng/ul | 99 |
| 35) 1-Methylnaphthalene | 12.34 | 142 | 824685 | 14.192 | ng/ul | 100 |
| 41) 1,1'-Biphenyl | 13.14 | 154 | 323072 | 4.603 | ng/ul | 98 |
| 45) Dimethylphthalate | 13.77 | 163 | 498739 | 7.049 | ng/ul | 99 |
| 48) Acenaphthylene | 14.03 | 152 | 13539560 | 159.732 | ng/ul | 97 |
| 50) Acenaphthene | 14.37 | 153 | 2578366 | 43.683 | ng/ul | 100 |
| 54) Dibenzofuran | 14.71 | 168 | 3251909 | 38.809 | ng/ul | 100 |
| 59) Fluorene | 15.36 | 166 | 3969077 | 57.734 | ng/ul | 99 |
| 70) Phenanthrene | 17.20 | 178 | 14579960 | 143.827 | ng/ul# | 85 |
| 72) Anthracene | 17.20 | 178 | 14595586 | 139.333 | ng/ul# | 84 |
| 75) Carbazole | 17.46 | 167 | 6780248 | 72.453 | ng/ul | 99 |
| 77) Fluoranthene | 19.28 | 202 | 4497388 | 37.304 | ng/ul | 98 |
| 80) Pyrene | 19.40 | 202 | 1395505 | 12.607 | ng/ul | 96 |
| 83) Benzo(a)anthracene | 21.30 | 228 | 1121377 | 9.366 | ng/ul# | 85 |
| 84) Bis(2-ethylhexyl)phthalate | 21.21 | 149 | 63817 | 1.042 | ng/ul# | 66 |
| 85) Chrysene | 21.30 | 228 | 1121377 | 10.087 | ng/ul# | 88 |
| 87) Di-n-octyl phthalate | 22.09 | 149 | 30444 | 11.029 | ng/ul | 100 |
| 88) Benzo(b)fluoranthene | 22.78 | 252 | 396172 | 122.130 | ng/ul# | 1 |

Data Path : Z:\SVOASRV\HPCHEM1\BNA M\DATA\BM101619\
 Data File : BM023218.D
 Acq On : 17 Oct 2019 12:50
 Operator : JU
 Sample : K5262-21
 Misc :
 ALS Vial : 25 Sample Multiplier: 1

Instrument :
 BNA_M
 ClientSampleId :

Quant Time: Oct 17 14:35:22 2019
 Quant Method : Z:\SVOASRV\HPCHEM1\BNA_M\METHODS\SOM-EPA-BM101419MA.M
 Quant Title : SVOA CALIBRATION
 QLast Update : Thu Oct 17 12:33:14 2019
 Response via : Initial Calibration

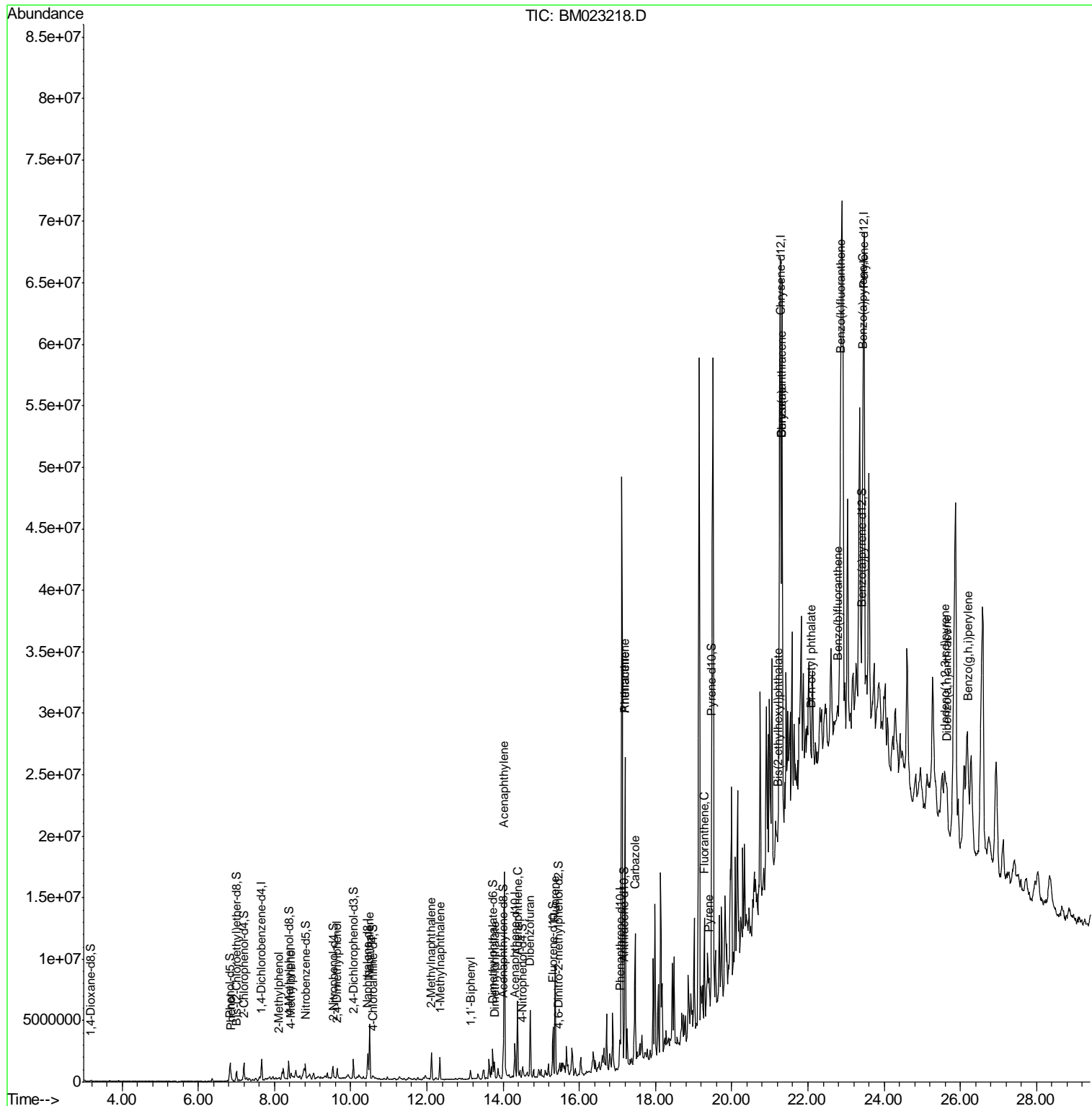
| Internal Standards | R.T. | QIon | Response | Conc | Units | Dev(Min) |
|----------------------------|-------|------|----------|----------|--------|----------|
| 89) Benzo(k)fluoranthene | 22.85 | 252 | 3418227 | 1097.417 | ng/ul# | 78 |
| 91) Benzo(a)pyrene | 23.44 | 252 | 3116047 | 1001.245 | ng/ul# | 86 |
| 92) Indeno(1,2,3-cd)pyrene | 25.59 | 276 | 5044732 | 1362.572 | ng/ul# | 91 |
| 93) Dibenzo(a,h)anthracene | 25.64 | 278 | 2097421 | 677.543 | ng/ul# | 85 |
| 94) Benzo(g,h,i)perylene | 26.20 | 276 | 2597390 | 852.080 | ng/ul# | 46 |

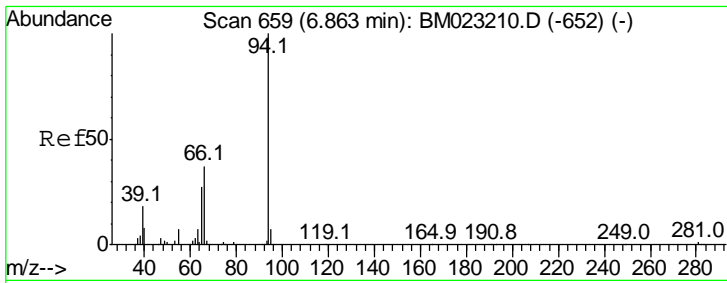
(#) = qualifier out of range (m) = manual integration (+) = signals summed

Data Path : Z:\SVOASRV\HPCHEM1\BNA M\DATA\BM101619\
 Data File : BM023218.D
 Acq On : 17 Oct 2019 12:50
 Operator : JU
 Sample : K5262-21
 Misc :
 ALS Vial : 25 Sample Multiplier: 1

Instrument :
 BNA_M
 ClientSampled :

Quant Time: Oct 17 14:35:22 2019
 Quant Method : Z:\SVOASRV\HPCHEM1\BNA_M\METHODS\SOM-EPA-BM101419MA.M
 Quant Title : SVOA CALIBRATION
 QLast Update : Thu Oct 17 12:33:14 2019
 Response via : Initial Calibration

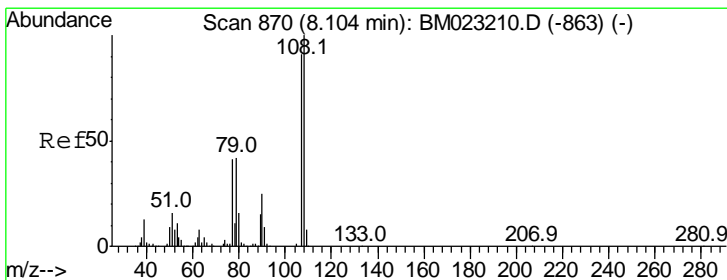
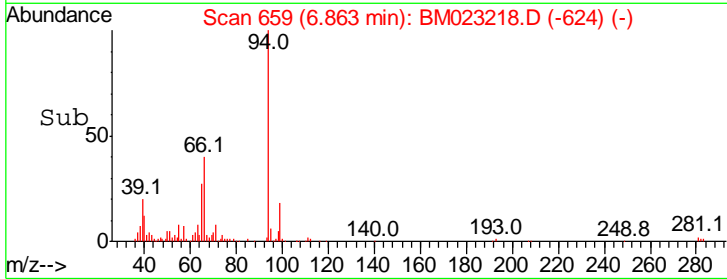
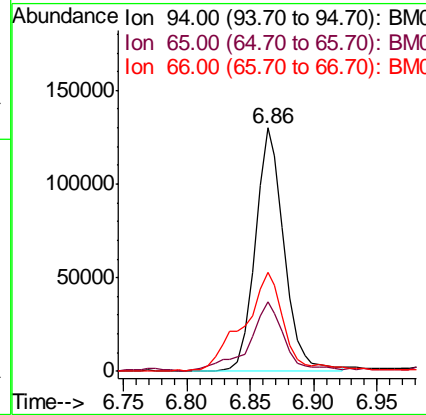
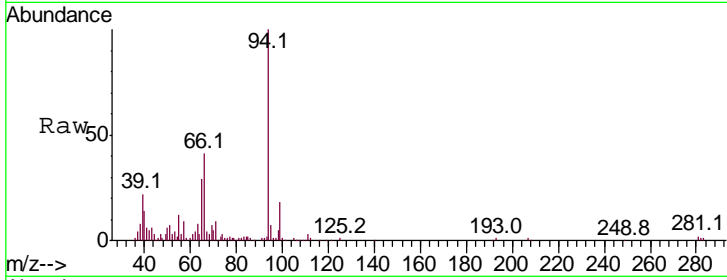




#6
 Phenol
 Concen: 5.507 ng/ul
 RT: 6.86 min Scan# 659
 Delta R.T. 0.01 min
 Lab File: BM023218.D
 Acq: 17 Oct 2019 12:50

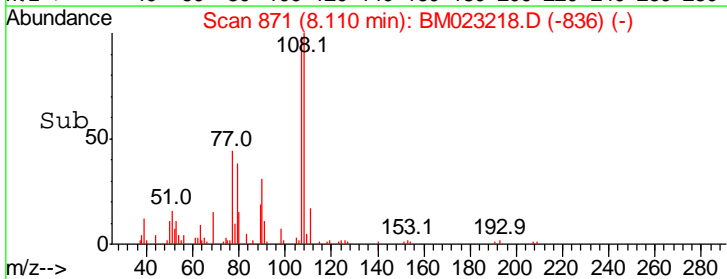
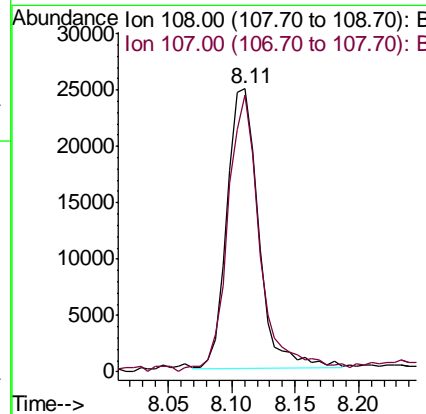
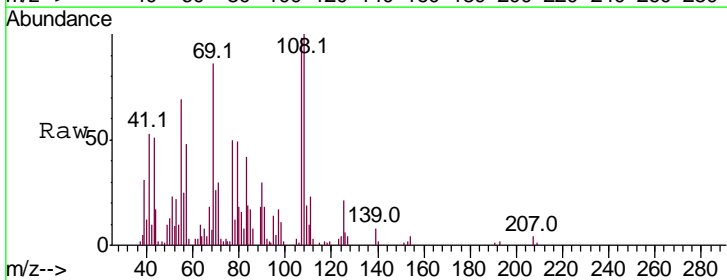
Instrument :
 BNA_M
 ClientSampled :

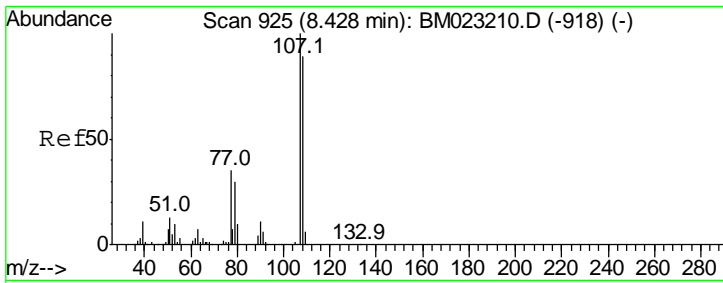
| Tgt Ion | Resp | Lower | Upper |
|---------|------|-------|-------|
| 94 | 100 | | |
| 65 | 28.6 | 23.7 | 35.5 |
| 66 | 40.6 | 32.9 | 49.3 |



#11
 2-Methylphenol
 Concen: 1.509 ng/ul
 RT: 8.11 min Scan# 871
 Delta R.T. 0.01 min
 Lab File: BM023218.D
 Acq: 17 Oct 2019 12:50

| Tgt Ion | Resp | Lower | Upper |
|---------|------|-------|-------|
| 108 | 100 | | |
| 107 | 98.0 | 72.9 | 109.3 |

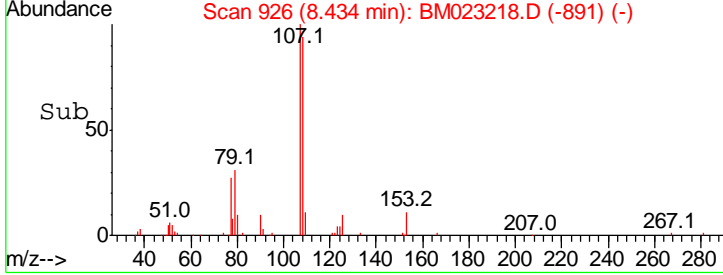
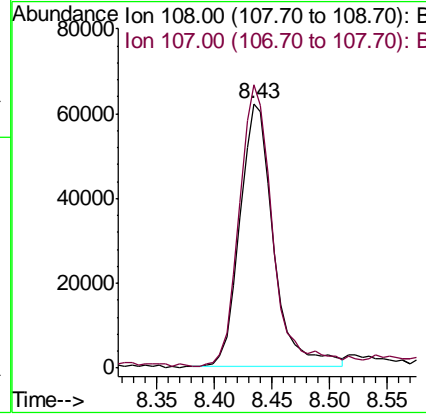
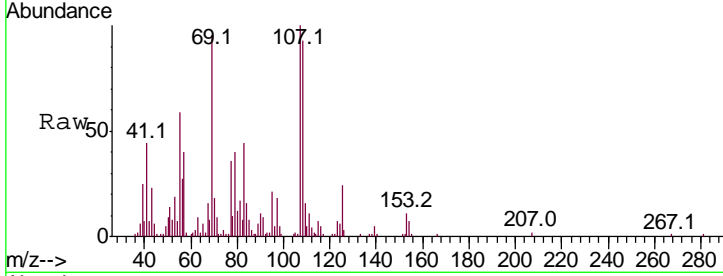




#16
 4-Methylphenol
 Concen: 4.032 ng/ul
 RT: 8.43 min Scan# 926
 Delta R.T. 0.01 min
 Lab File: BM023218.D
 Acq: 17 Oct 2019 12:50

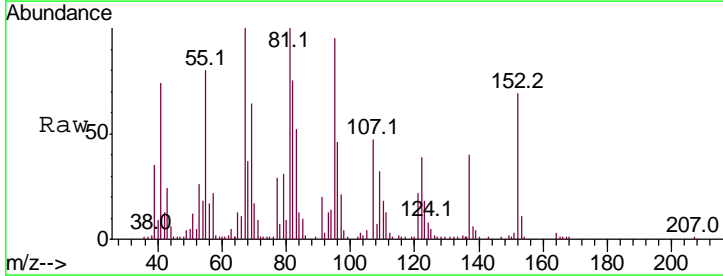
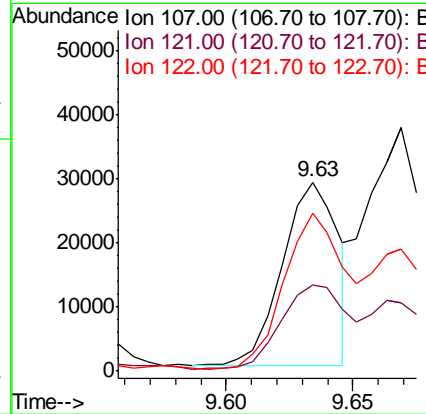
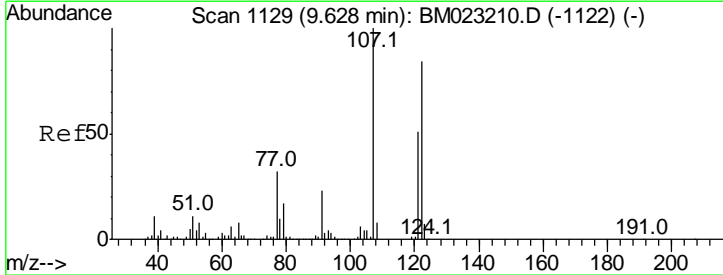
Instrument :
 BNA_M
ClientSampled :

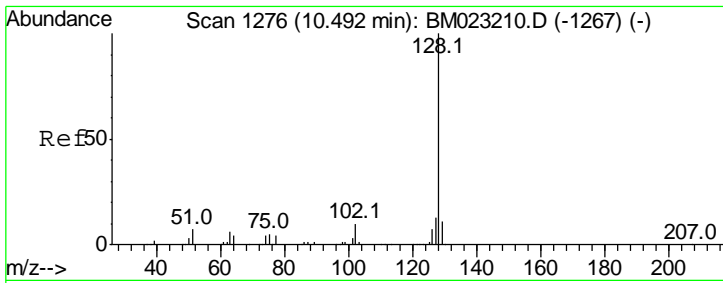
| Tgt Ion | Resp | Lower | Upper |
|---------|-------|-------|-------|
| 108 | 12594 | | |
| 107 | 107.0 | 89.3 | 133.9 |



#24
 2,4-Dimethylphenol
 Concen: 1.421 ng/ul
 RT: 9.63 min Scan# 1130
 Delta R.T. 0.01 min
 Lab File: BM023218.D
 Acq: 17 Oct 2019 12:50

| Tgt Ion | Resp | Lower | Upper |
|---------|-------|-------|-------|
| 107 | 43719 | | |
| 121 | 121.0 | 39.0 | 58.4 |
| 122 | 122.0 | 64.7 | 97.1 |

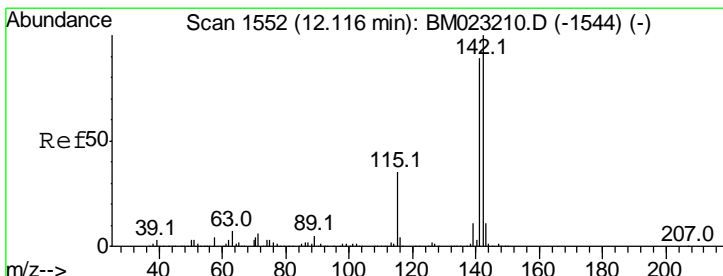
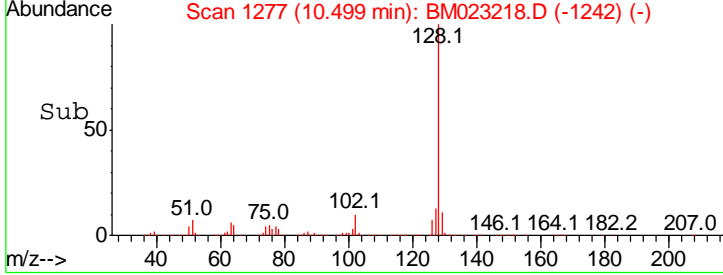
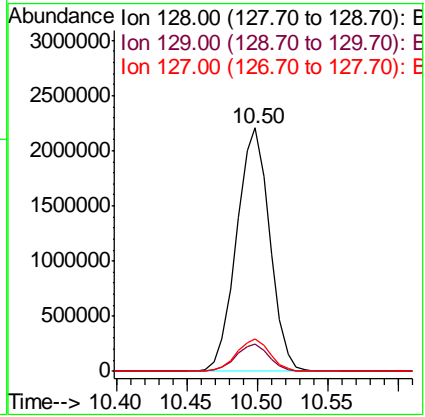
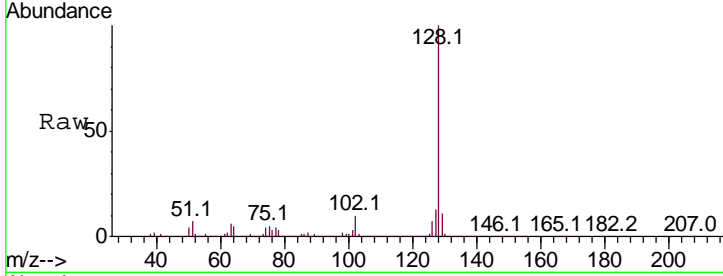




#28
 Naphthalene
 Concen: 44.850 ng/ul
 RT: 10.50 min Scan# 1277
 Delta R.T. 0.01 min
 Lab File: BM023218.D
 Acq: 17 Oct 2019 12:50

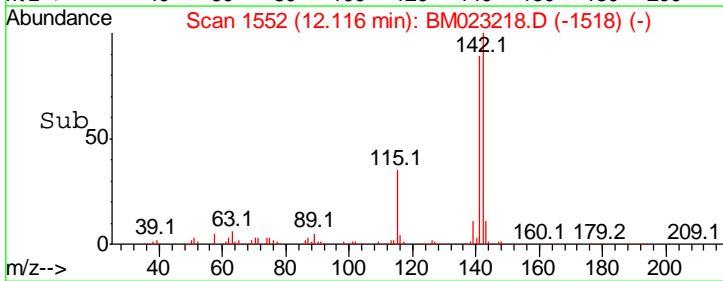
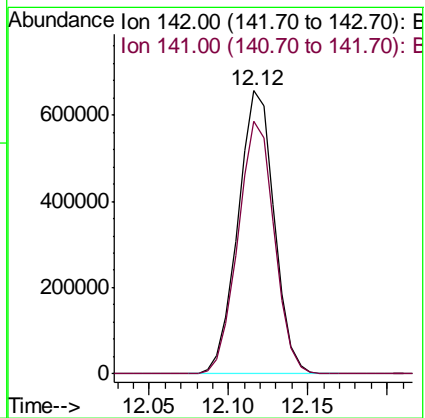
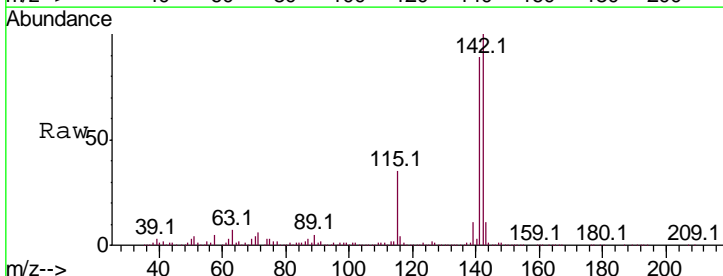
Instrument :
 BNA_M
 ClientSampled :

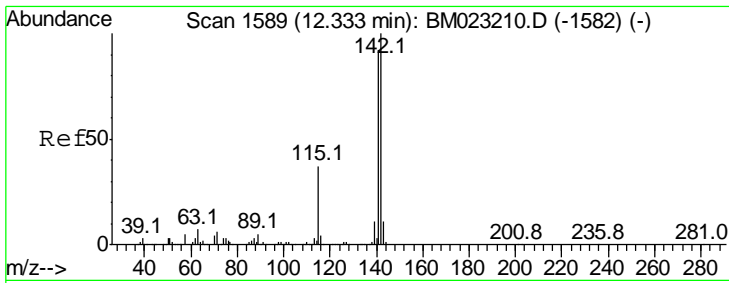
| Tgt Ion | Resp | Lower | Upper |
|---------|---------|-------|-------|
| 128 | 3619009 | | |
| 129 | 11.1 | 8.3 | 12.5 |
| 127 | 13.5 | 10.2 | 15.4 |



#34
 2-Methylnaphthalene
 Concen: 17.302 ng/ul
 RT: 12.12 min Scan# 1552
 Delta R.T. 0.00 min
 Lab File: BM023218.D
 Acq: 17 Oct 2019 12:50

| Tgt Ion | Resp | Lower | Upper |
|---------|---------|-------|-------|
| 142 | 1038870 | | |
| 141 | 89.2 | 72.1 | 108.1 |

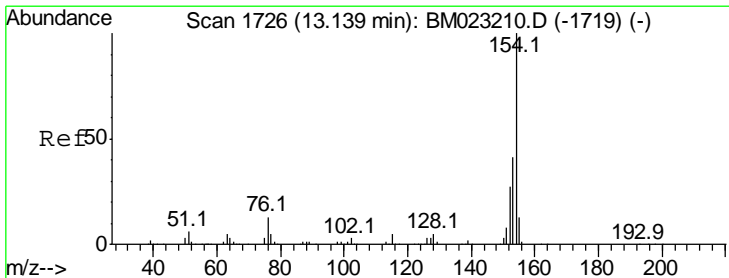
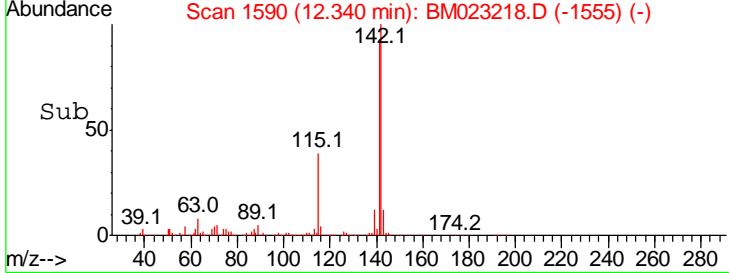
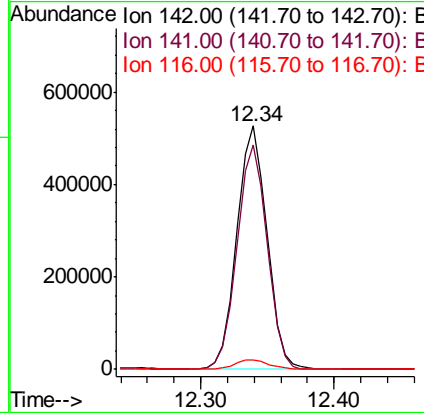
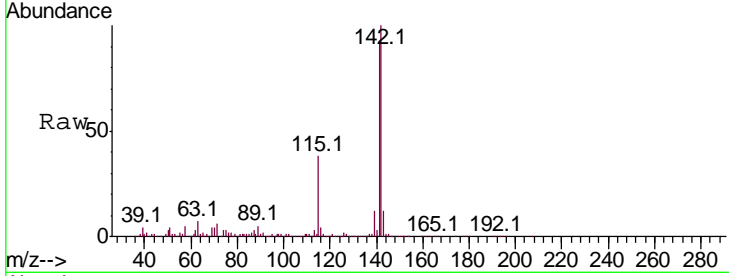




#35
 1-Methylnaphthalene
 Concen: 14.192 ng/ul
 RT: 12.34 min Scan# 1590
 Delta R.T. 0.01 min
 Lab File: BM023218.D
 Acq: 17 Oct 2019 12:50

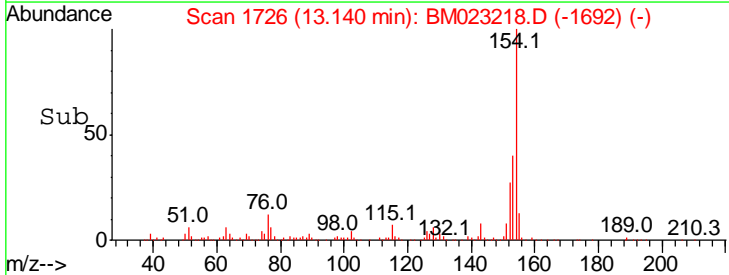
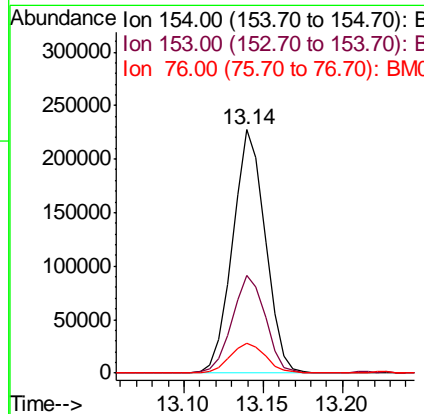
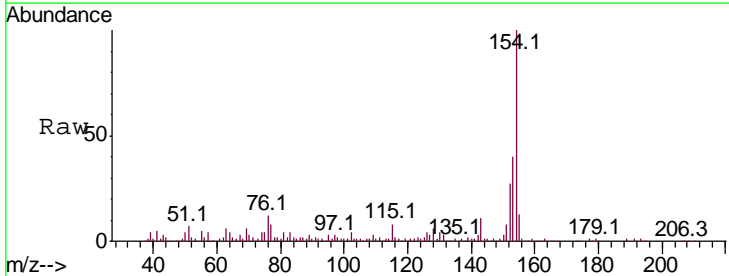
Instrument :
 BNA_M
 ClientSampled :

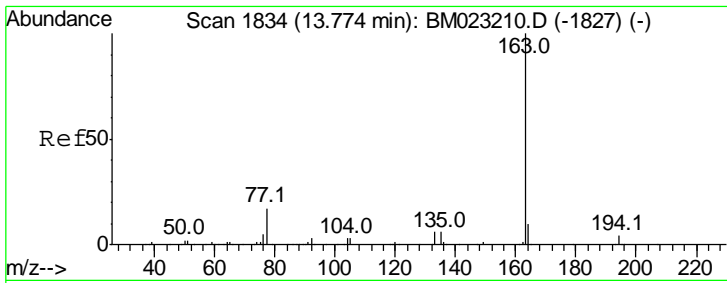
| Tgt Ion | Resp | Lower | Upper |
|---------|------|-------|-------|
| 142 | 100 | | |
| 141 | 92.4 | 74.2 | 111.2 |
| 116 | 4.1 | 3.3 | 4.9 |



#41
 1,1'-Biphenyl
 Concen: 4.603 ng/ul
 RT: 13.14 min Scan# 1726
 Delta R.T. 0.00 min
 Lab File: BM023218.D
 Acq: 17 Oct 2019 12:50

| Tgt Ion | Resp | Lower | Upper |
|---------|------|-------|-------|
| 154 | 100 | | |
| 153 | 40.4 | 33.1 | 49.7 |
| 76 | 12.2 | 10.6 | 15.8 |

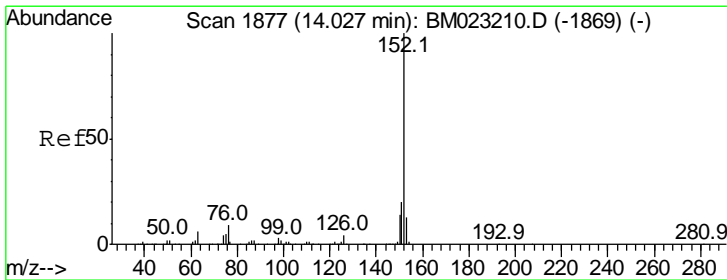
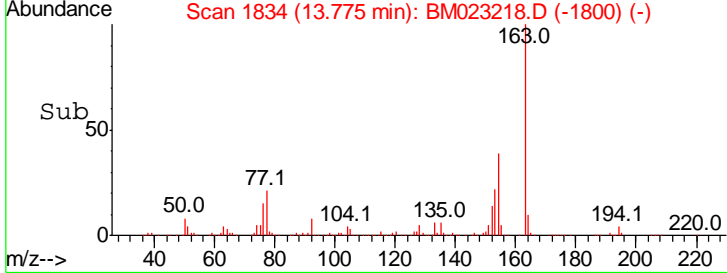
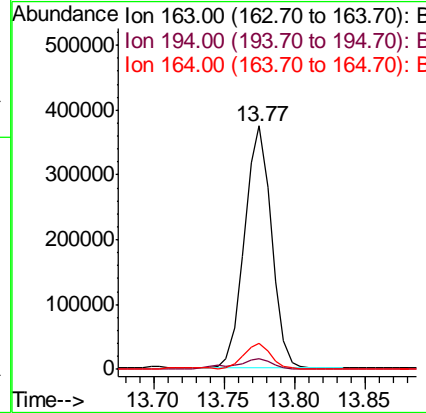
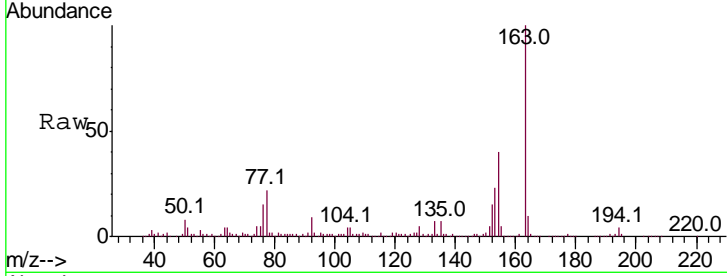




#45
 Dimethylphthalate
 Concen: 7.049 ng/ul
 RT: 13.77 min Scan# 1834
 Delta R.T. 0.00 min
 Lab File: BM023218.D
 Acq: 17 Oct 2019 12:50

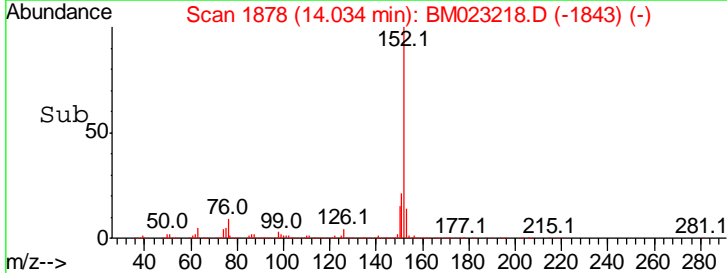
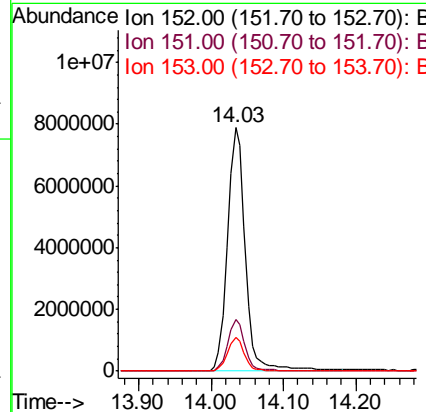
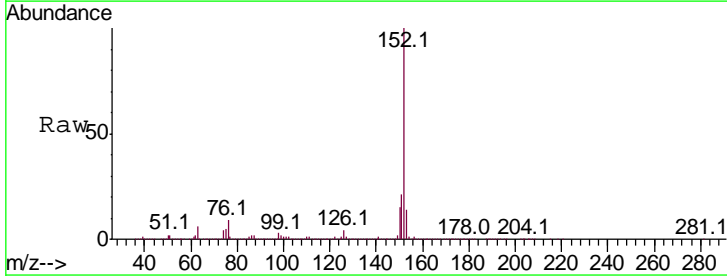
Instrument :
 BNA_M
 ClientSampled :

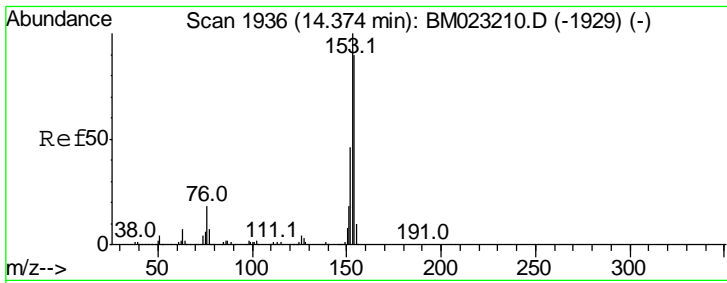
| Tgt Ion | Resp | Lower | Upper |
|---------|------|-------|-------|
| 163 | 100 | | |
| 194 | 4.4 | 3.5 | 5.3 |
| 164 | 10.5 | 8.0 | 12.0 |



#48
 Acenaphthylene
 Concen: 159.732 ng/ul
 RT: 14.03 min Scan# 1878
 Delta R.T. 0.01 min
 Lab File: BM023218.D
 Acq: 17 Oct 2019 12:50

| Tgt Ion | Resp | Lower | Upper |
|---------|------|-------|-------|
| 152 | 100 | | |
| 151 | 21.0 | 15.8 | 23.6 |
| 153 | 13.8 | 10.3 | 15.5 |

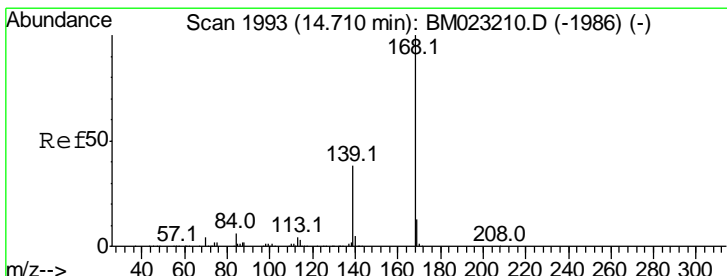
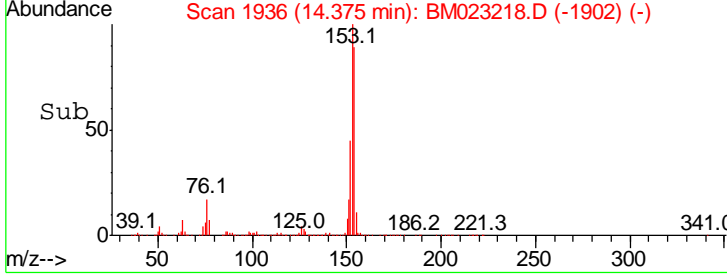
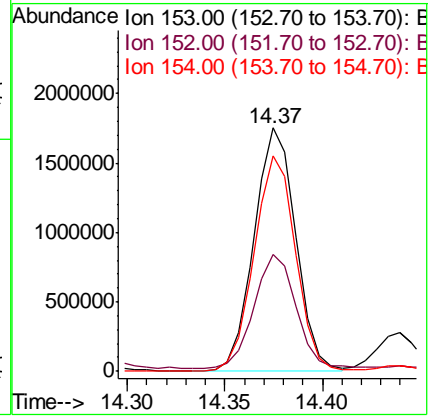
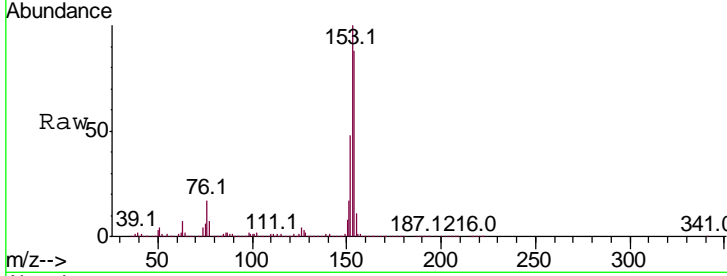




#50
 Acenaphthene
 Concen: 43.683 ng/ul
 RT: 14.37 min Scan# 1936
 Delta R.T. 0.00 min
 Lab File: BM023218.D
 Acq: 17 Oct 2019 12:50

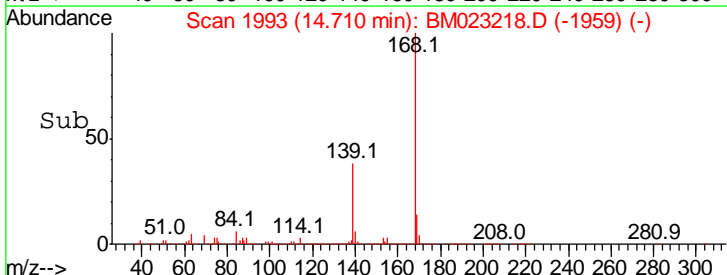
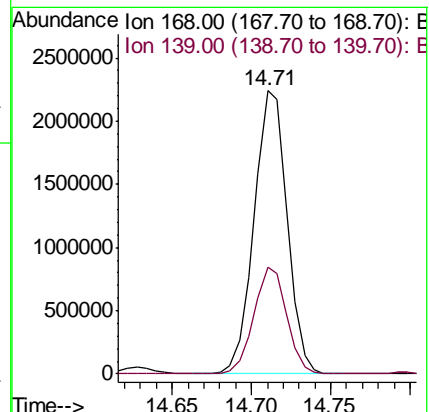
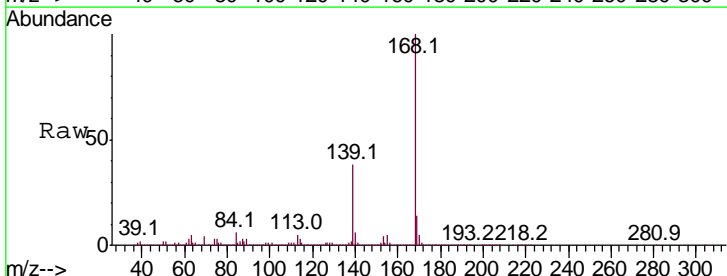
Instrument :
 BNA_M
 ClientSampled :

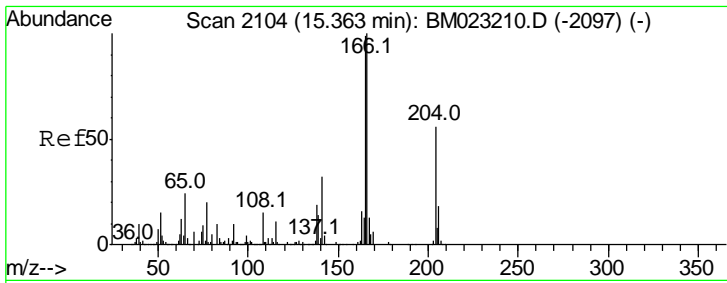
| Tgt Ion | Resp | Lower | Upper |
|---------|------|-------|-------|
| 153 | 100 | | |
| 152 | 48.0 | 38.0 | 57.0 |
| 154 | 88.3 | 70.4 | 105.6 |



#54
 Dibenzofuran
 Concen: 38.809 ng/ul
 RT: 14.71 min Scan# 1993
 Delta R.T. 0.00 min
 Lab File: BM023218.D
 Acq: 17 Oct 2019 12:50

| Tgt Ion | Resp | Lower | Upper |
|---------|------|-------|-------|
| 168 | 100 | | |
| 139 | 37.7 | 30.1 | 45.1 |



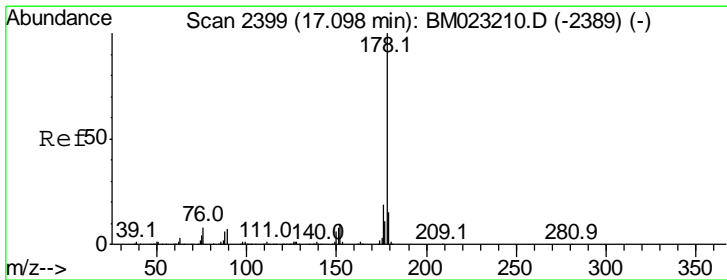
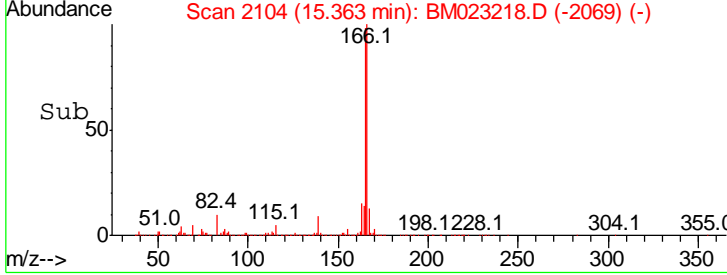
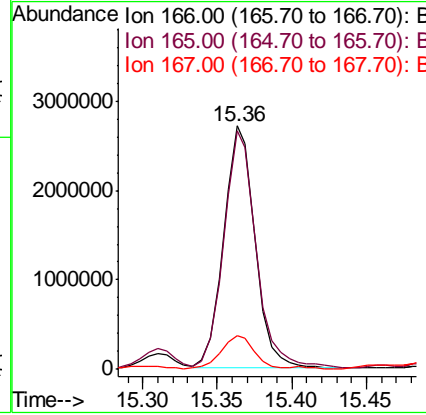
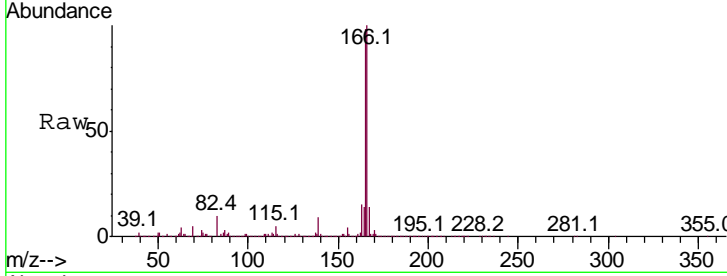


#59
 Fluorene
 Concen: 57.734 ng/ul
 RT: 15.36 min Scan# 2104
 Delta R.T. 0.01 min
 Lab File: BM023218.D
 Acq: 17 Oct 2019 12:50

Instrument :
 BNA_M
 ClientSampled :

Tgt Ion:166 Resp: 3969077

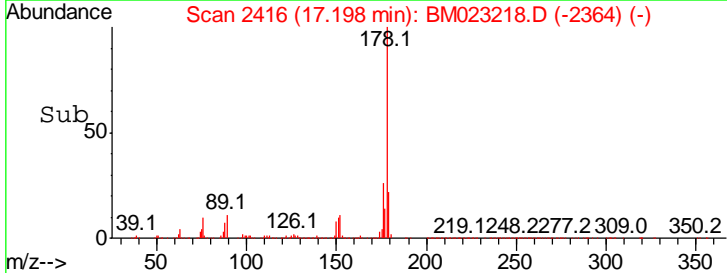
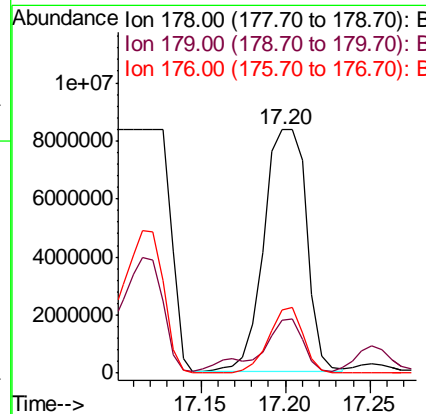
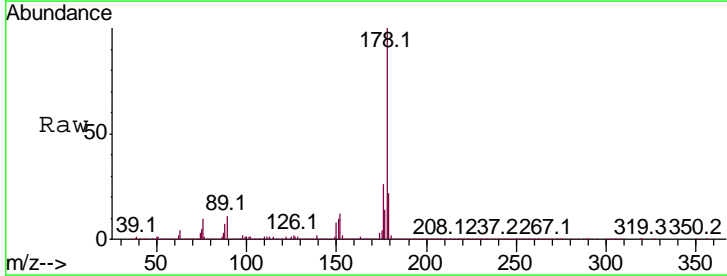
| Ion | Ratio | Lower | Upper |
|-----|-------|-------|-------|
| 166 | 100 | | |
| 165 | 98.2 | 77.4 | 116.0 |
| 167 | 14.0 | 10.8 | 16.2 |

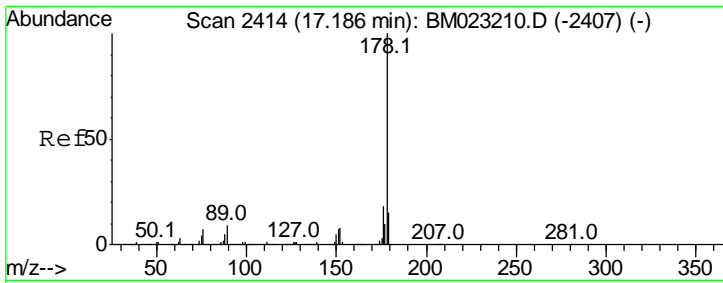


#70
 Phenanthrene
 Concen: 143.827 ng/ul
 RT: 17.20 min Scan# 2416
 Delta R.T. 0.11 min
 Lab File: BM023218.D
 Acq: 17 Oct 2019 12:50

Tgt Ion:178 Resp:14579960

| Ion | Ratio | Lower | Upper |
|-----|-------|-------|-------|
| 178 | 100 | | |
| 179 | 21.7 | 12.3 | 18.5# |
| 176 | 25.9 | 15.5 | 23.3# |



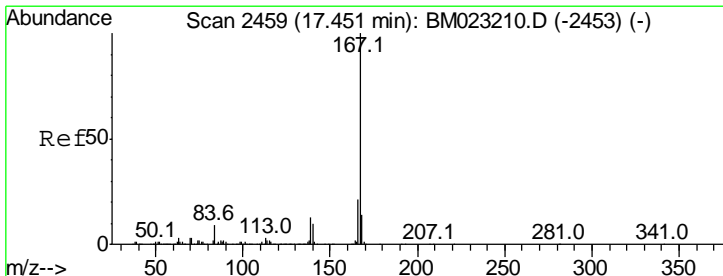
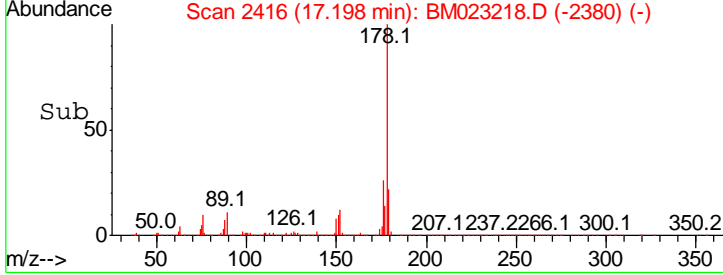
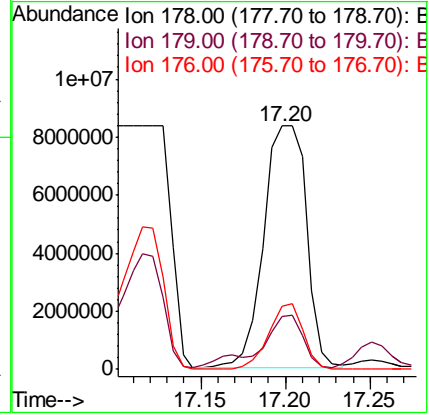
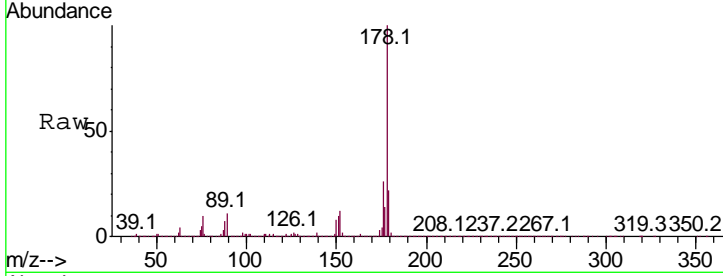


#72
 Anthracene
 Concen: 139.333 ng/ul
 RT: 17.20 min Scan# 2416
 Delta R.T. 0.01 min
 Lab File: BM023218.D
 Acq: 17 Oct 2019 12:50

Instrument :
 BNA_M
 ClientSampled :

Tgt Ion:178 Resp:14595586

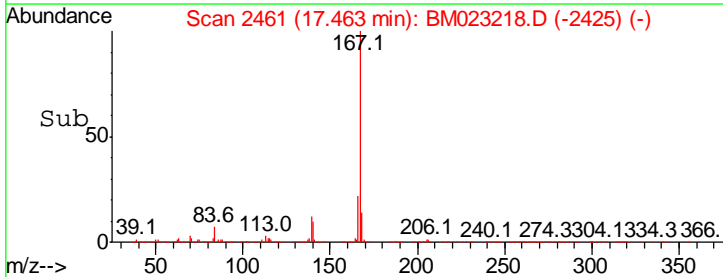
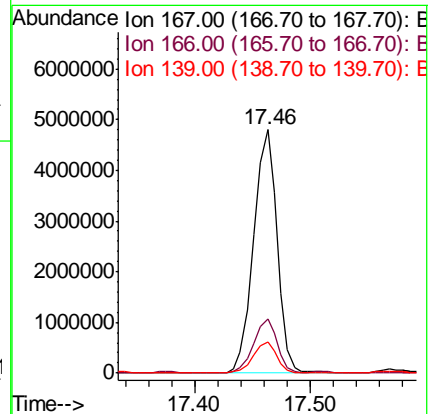
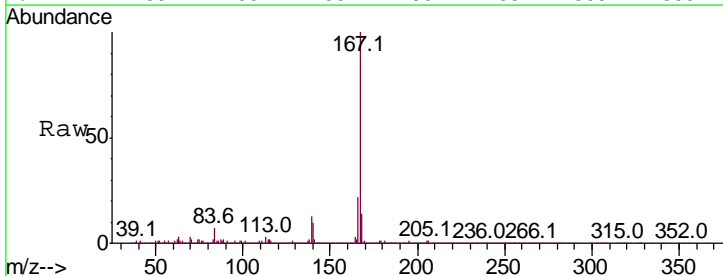
| Ion | Ratio | Lower | Upper |
|-----|-------|-------|-------|
| 178 | 100 | | |
| 179 | 21.7 | 12.3 | 18.5# |
| 176 | 25.9 | 15.0 | 22.4# |

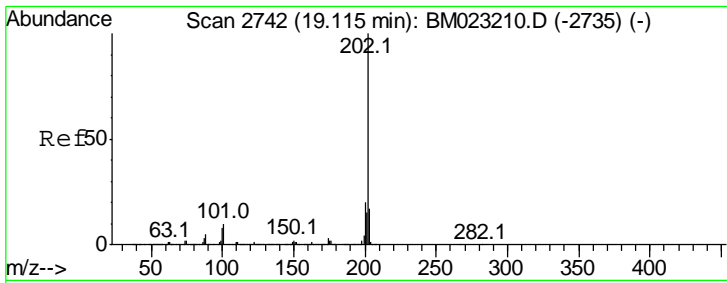


#75
 Carbazole
 Concen: 72.453 ng/ul
 RT: 17.46 min Scan# 2461
 Delta R.T. 0.01 min
 Lab File: BM023218.D
 Acq: 17 Oct 2019 12:50

Tgt Ion:167 Resp: 6780248

| Ion | Ratio | Lower | Upper |
|-----|-------|-------|-------|
| 167 | 100 | | |
| 166 | 22.3 | 17.4 | 26.0 |
| 139 | 12.6 | 10.2 | 15.2 |

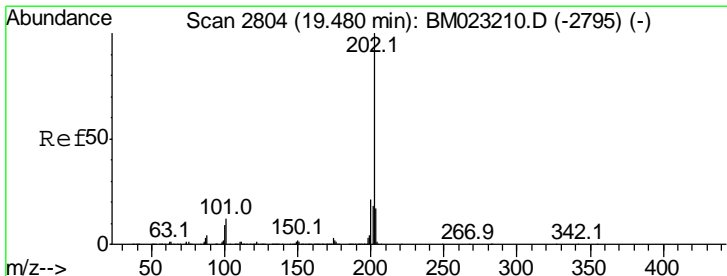
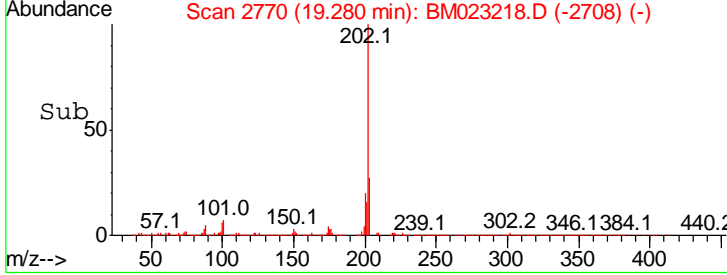
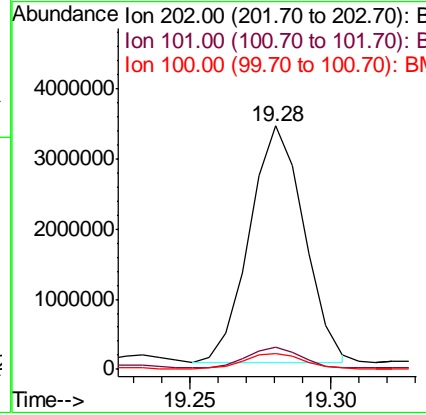
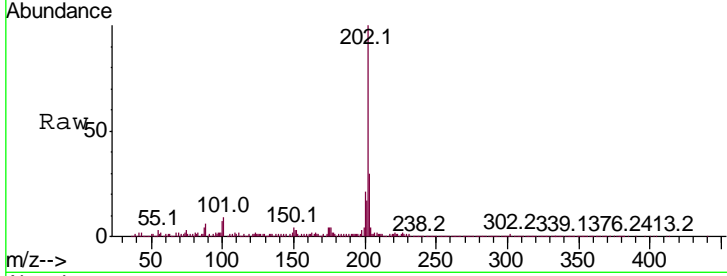




#77
 Fluoranthene
 Concen: 37.304 ng/ul
 RT: 19.28 min Scan# 2770
 Delta R.T. 0.17 min
 Lab File: BM023218.D
 Acq: 17 Oct 2019 12:50

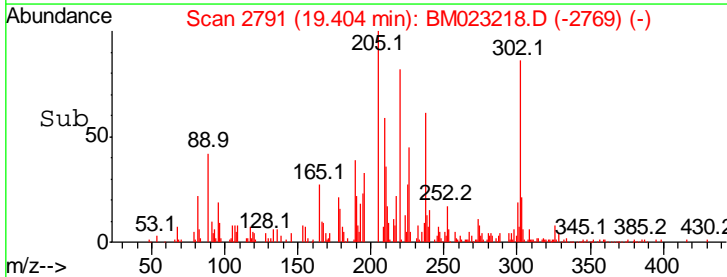
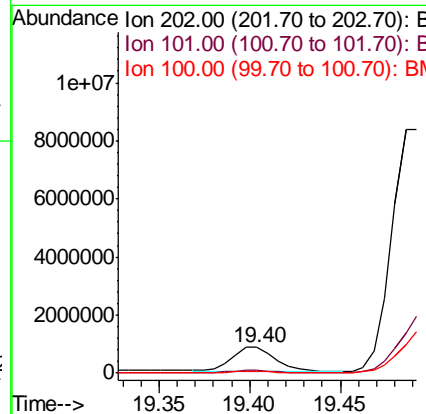
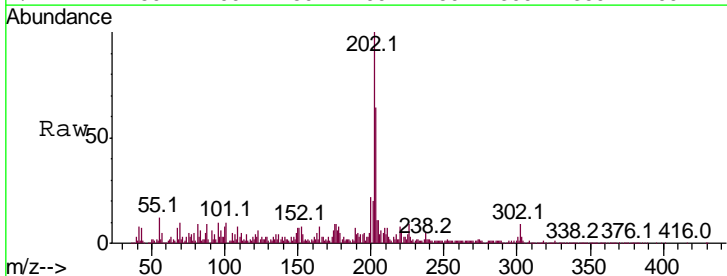
Instrument :
 BNA_M
 ClientSampled :

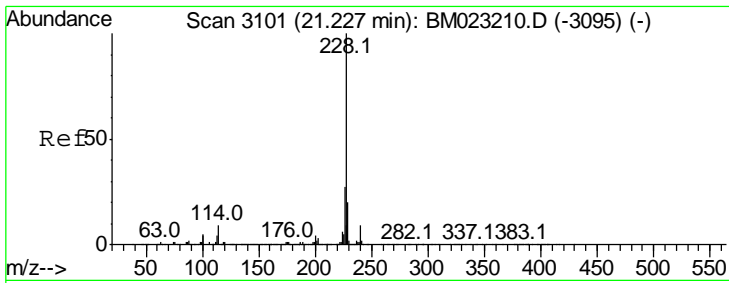
| Tgt Ion | Ratio | Lower | Upper |
|---------|-------|-------|-------|
| 202 | 100 | | |
| 101 | 9.0 | 7.8 | 11.8 |
| 100 | 6.7 | 6.1 | 9.1 |



#80
 Pyrene
 Concen: 12.607 ng/ul
 RT: 19.40 min Scan# 2791
 Delta R.T. -0.07 min
 Lab File: BM023218.D
 Acq: 17 Oct 2019 12:50

| Tgt Ion | Ratio | Lower | Upper |
|---------|-------|-------|-------|
| 202 | 100 | | |
| 101 | 10.4 | 9.1 | 13.7 |
| 100 | 7.7 | 7.5 | 11.3 |



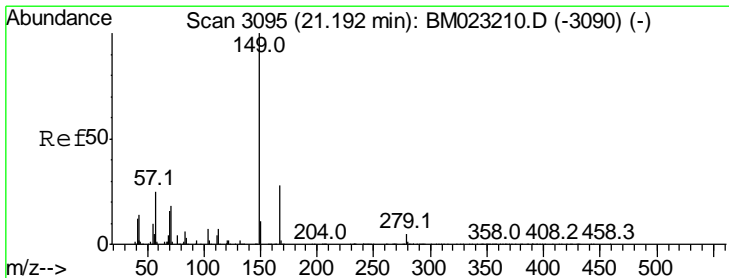
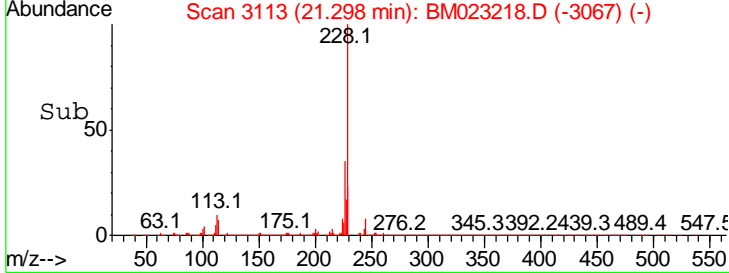
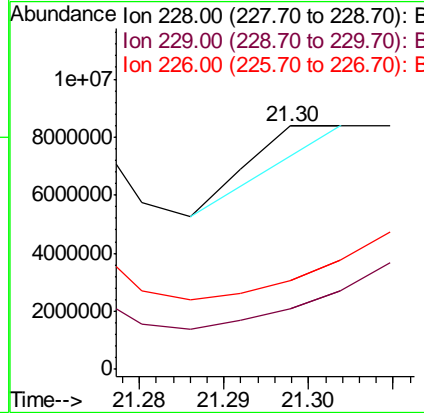
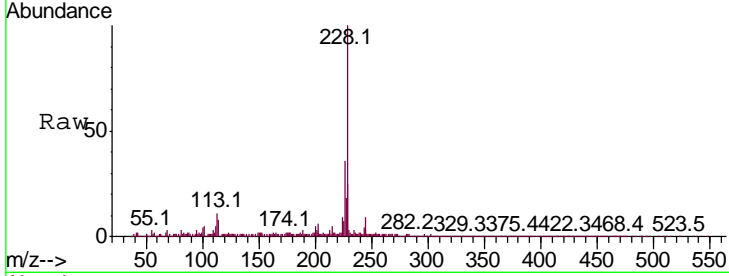


#83
 Benzo(a)anthracene
 Concen: 9.366 ng/ul
 RT: 21.30 min Scan# 3113
 Delta R.T. 0.07 min
 Lab File: BM023218.D
 Acq: 17 Oct 2019 12:50

Instrument :
 BNA_M
 ClientSampled :

Tgt Ion: 228 Resp: 1121377

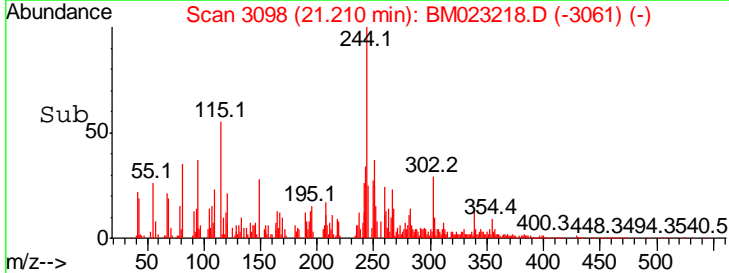
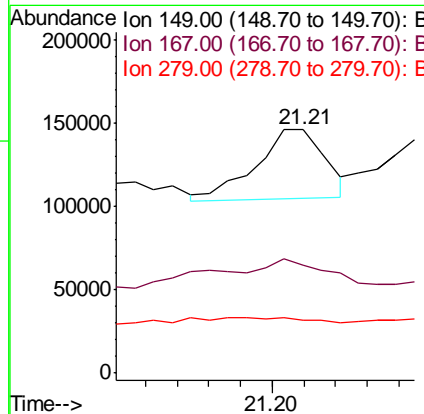
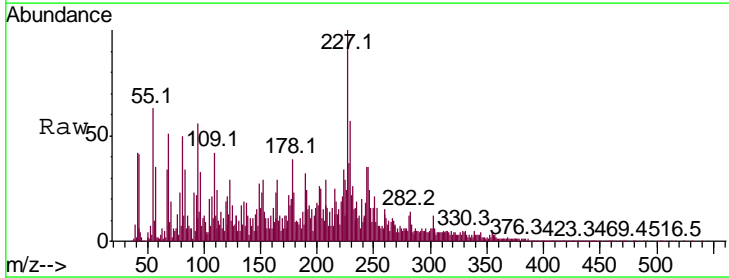
| Ion | Ratio | Lower | Upper |
|-----|-------|-------|-------|
| 228 | 100 | | |
| 229 | 24.9 | 15.7 | 23.5# |
| 226 | 36.3 | 21.6 | 32.4# |

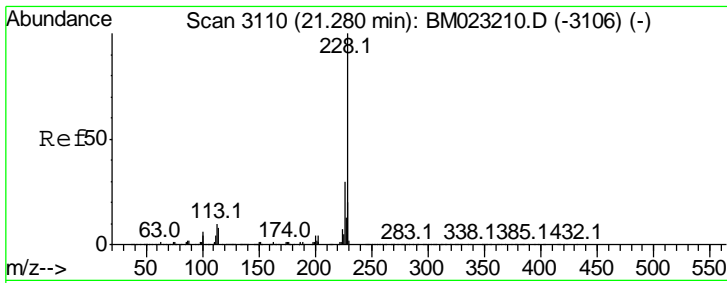


#84
 Bis(2-ethylhexyl)phthalate
 Concen: 1.042 ng/ul
 RT: 21.21 min Scan# 3098
 Delta R.T. 0.02 min
 Lab File: BM023218.D
 Acq: 17 Oct 2019 12:50

Tgt Ion: 149 Resp: 63817

| Ion | Ratio | Lower | Upper |
|-----|-------|-------|-------|
| 149 | 100 | | |
| 167 | 44.6 | 22.5 | 33.7# |
| 279 | 21.5 | 4.0 | 6.0# |



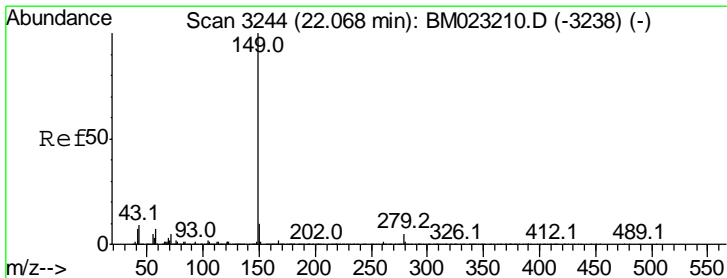
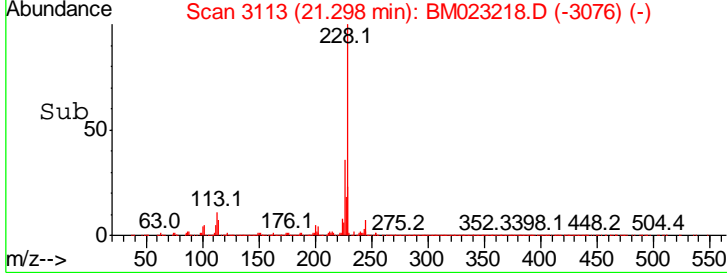
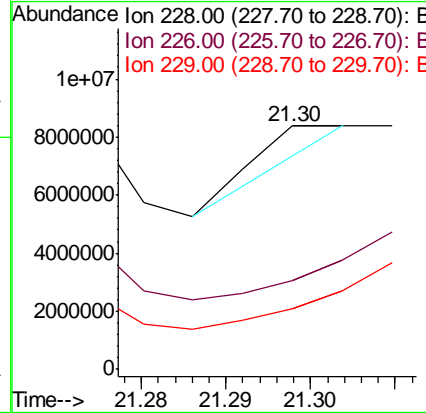
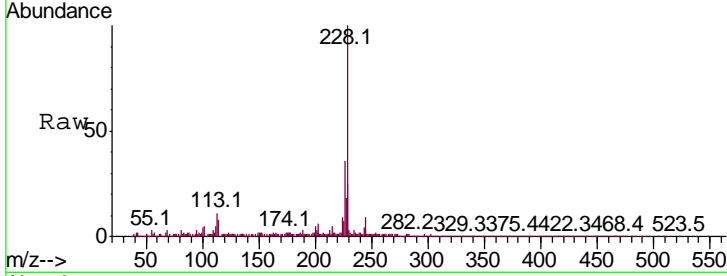


#85
 Chrysene
 Concen: 10.087 ng/ul
 RT: 21.30 min Scan# 3113
 Delta R.T. 0.02 min
 Lab File: BM023218.D
 Acq: 17 Oct 2019 12:50

Instrument :
 BNA_M
 ClientSampled :

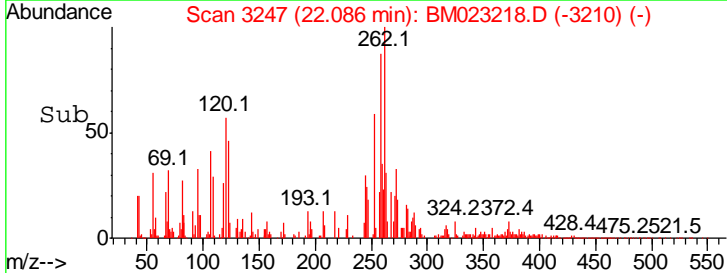
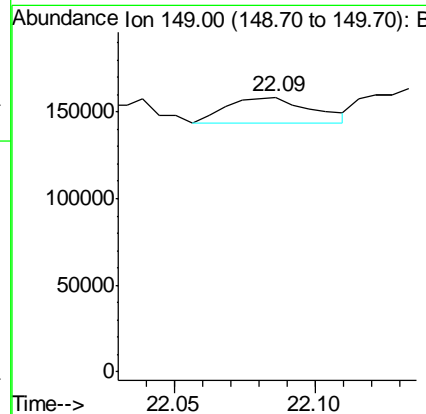
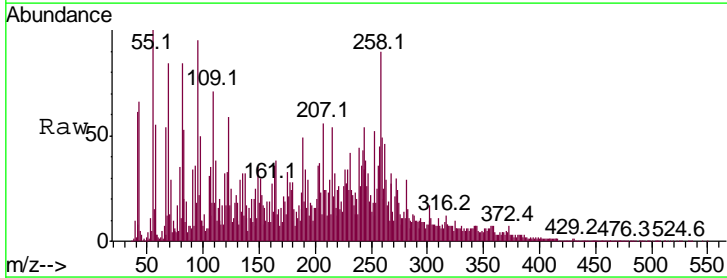
Tgt Ion: 228 Resp: 1121377

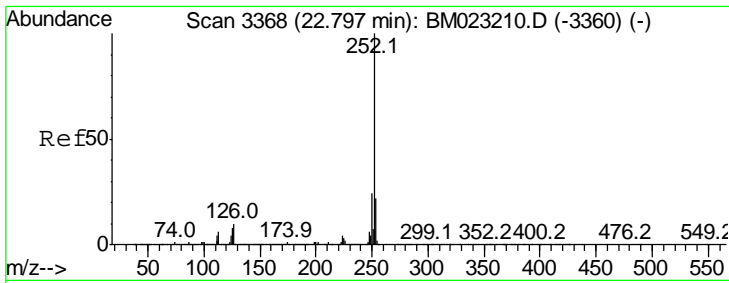
| Ion | Ratio | Lower | Upper |
|-----|-------|-------|-------|
| 228 | 100 | | |
| 226 | 36.3 | 23.8 | 35.6# |
| 229 | 24.9 | 15.5 | 23.3# |



#87
 Di-n-octyl phthalate
 Concen: 11.029 ng/ul
 RT: 22.09 min Scan# 3247
 Delta R.T. 0.02 min
 Lab File: BM023218.D
 Acq: 17 Oct 2019 12:50

Tgt Ion: 149 Resp: 30444

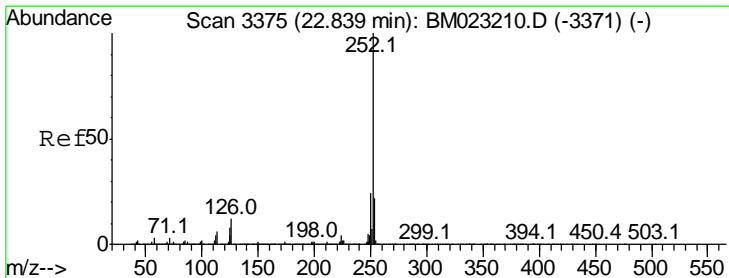
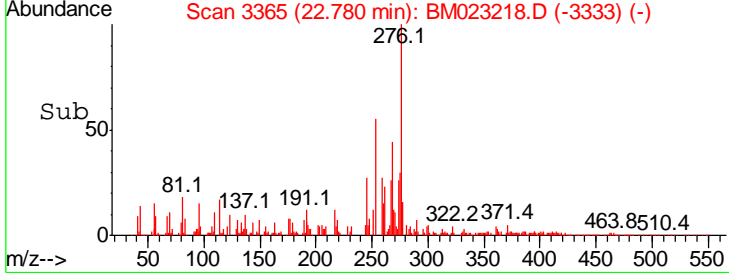
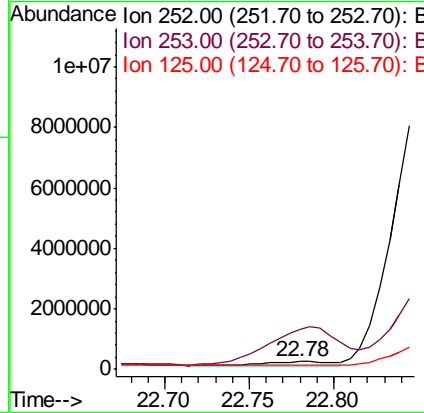
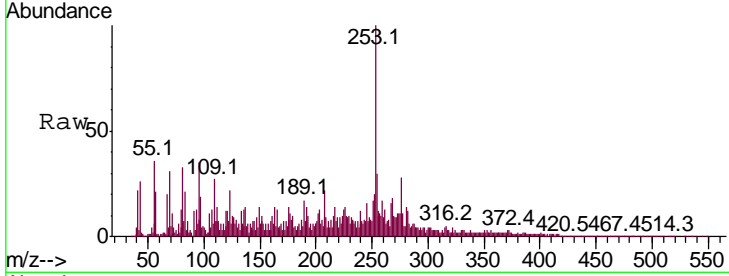




#88
 Benzo(b)fluoranthene
 Concen: 122.130 ng/ul
 RT: 22.78 min Scan# 3365
 Delta R.T. -0.01 min
 Lab File: BM023218.D
 Acq: 17 Oct 2019 12:50

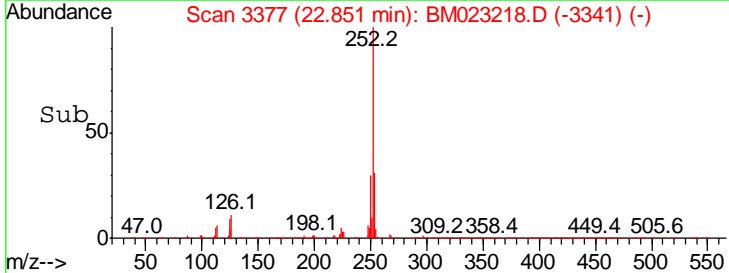
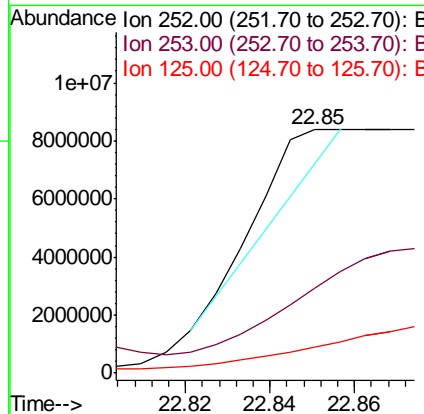
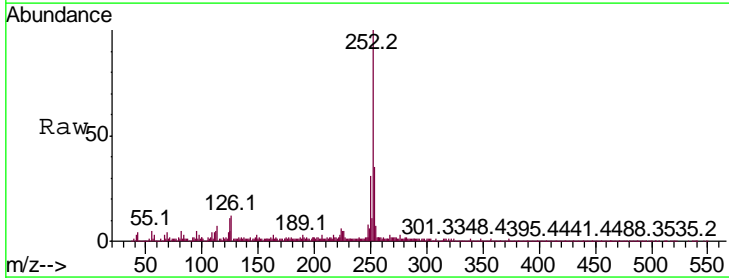
Instrument :
 BNA_M
 ClientSampled :

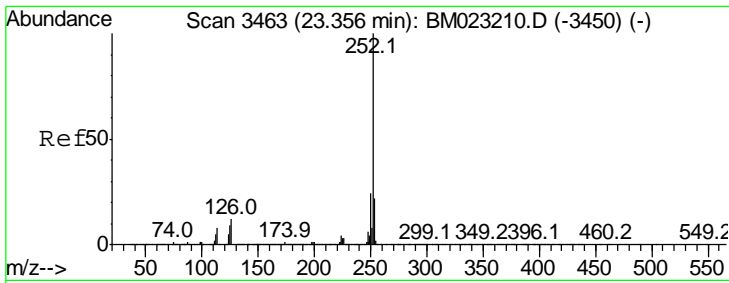
| Tgt Ion | Resp | Lower | Upper |
|---------|-------|-------|-------|
| 252 | 100 | | |
| 253 | 507.8 | 17.6 | 26.4# |
| 125 | 50.5 | 6.4 | 9.6# |



#89
 Benzo(k)fluoranthene
 Concen: 1097.417 ng/ul
 RT: 22.85 min Scan# 3377
 Delta R.T. 0.01 min
 Lab File: BM023218.D
 Acq: 17 Oct 2019 12:50

| Tgt Ion | Resp | Lower | Upper |
|---------|------|-------|-------|
| 252 | 100 | | |
| 253 | 34.9 | 17.4 | 26.0# |
| 125 | 10.7 | 6.5 | 9.7# |



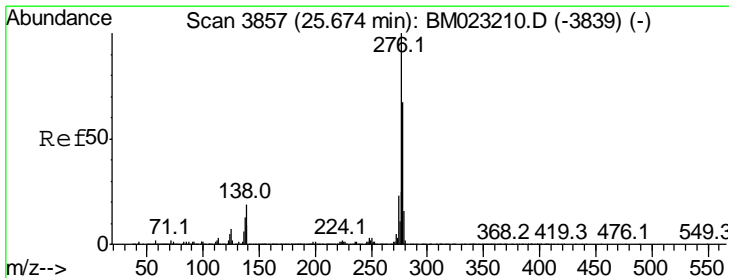
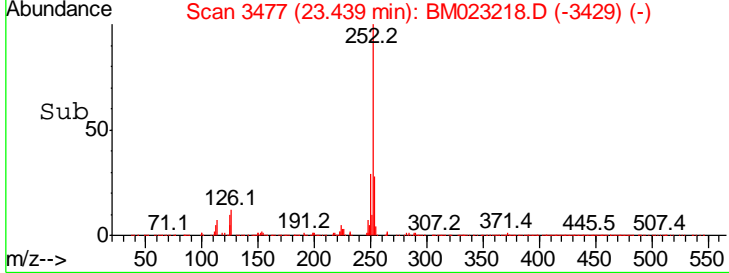
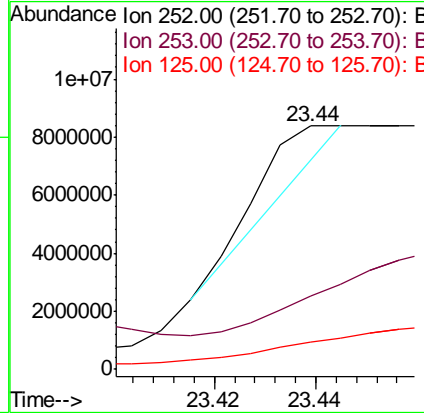
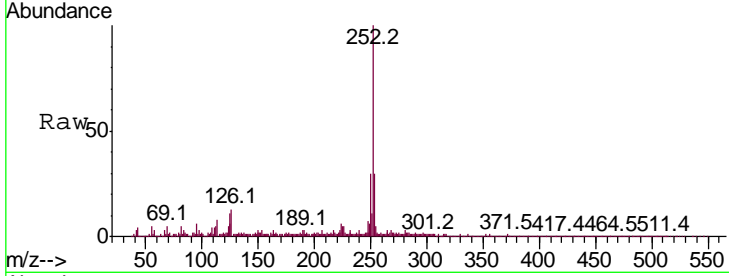


#91
 Benzo(a)pyrene
 Concen: 1001.245 ng/ul
 RT: 23.44 min Scan# 3477
 Delta R.T. 0.08 min
 Lab File: BM023218.D
 Acq: 17 Oct 2019 12:50

Instrument :
 BNA_M
 ClientSampled :

Tgt Ion: 252 Resp: 3116047

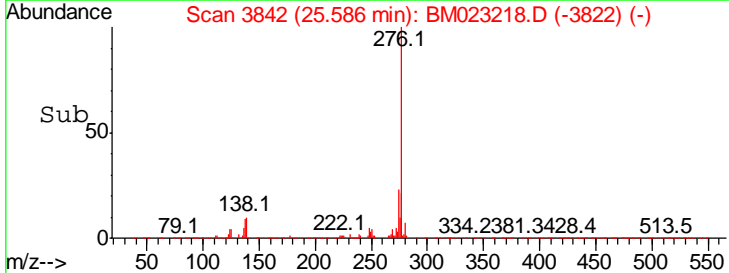
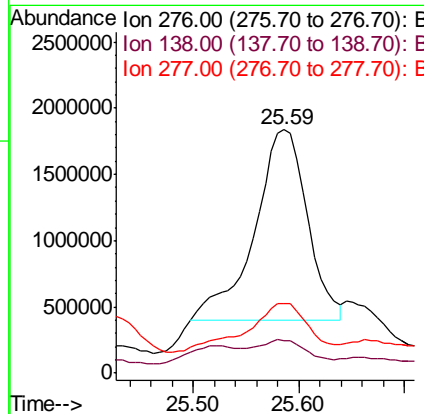
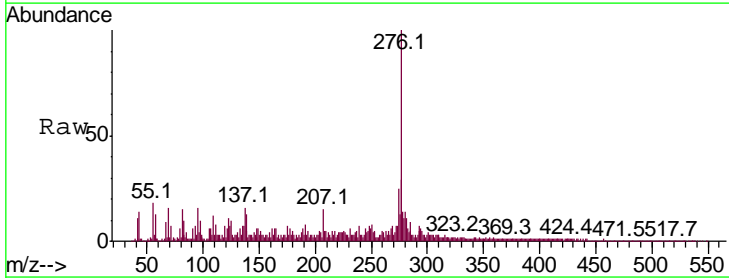
| Ion | Ratio | Lower | Upper |
|-----|-------|-------|-------|
| 252 | 100 | | |
| 253 | 30.2 | 17.2 | 25.8# |
| 125 | 11.0 | 7.4 | 11.0# |

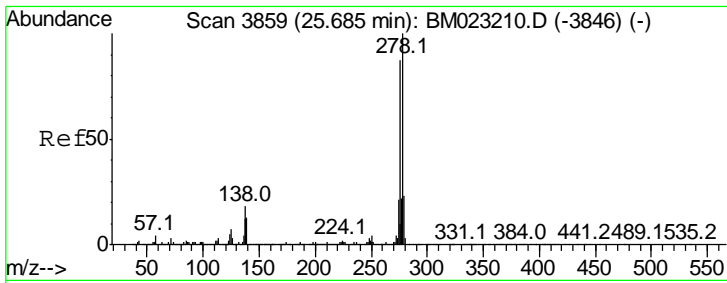


#92
 Indeno(1,2,3-cd)pyrene
 Concen: 1362.572 ng/ul
 RT: 25.59 min Scan# 3842
 Delta R.T. -0.08 min
 Lab File: BM023218.D
 Acq: 17 Oct 2019 12:50

Tgt Ion: 276 Resp: 5044732

| Ion | Ratio | Lower | Upper |
|-----|-------|-------|-------|
| 276 | 100 | | |
| 138 | 13.5 | 14.9 | 22.3# |
| 277 | 28.6 | 19.8 | 29.8 |



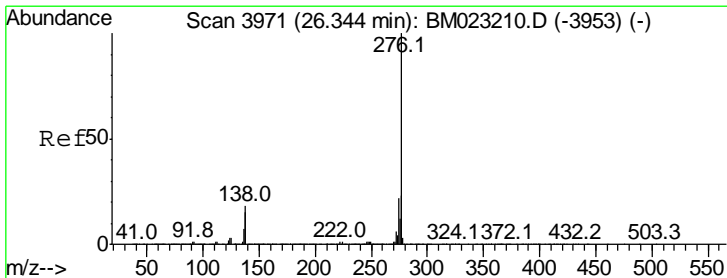
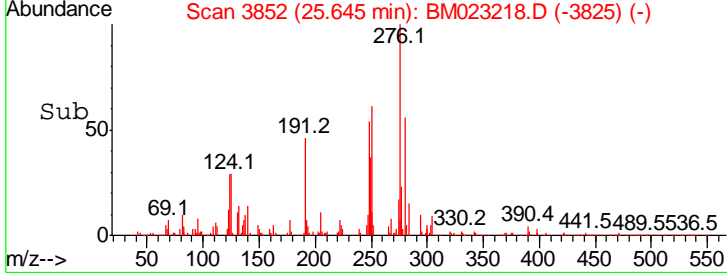
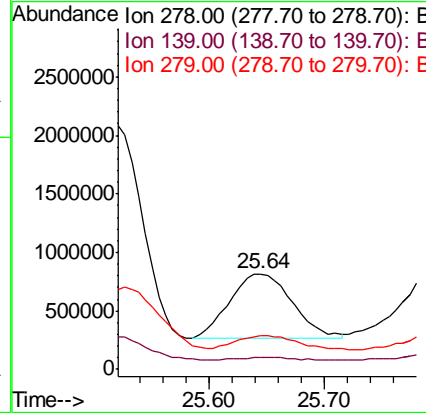
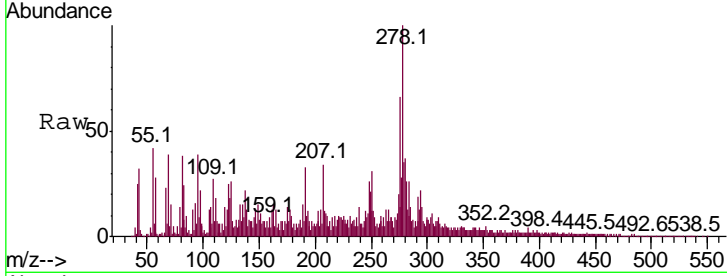


#93
 Dibenzo(a,h)anthracene
 Concen: 677.543 ng/ul
 RT: 25.64 min Scan# 3852
 Delta R.T. -0.04 min
 Lab File: BM023218.D
 Acq: 17 Oct 2019 12:50

Instrument :
 BNA_M
 ClientSampled :

Tgt Ion: 278 Resp: 2097421

| Ion | Ratio | Lower | Upper |
|-----|-------|-------|-------|
| 278 | 100 | | |
| 139 | 11.9 | 10.0 | 15.0 |
| 279 | 35.3 | 19.4 | 29.0 |



#94
 Benzo(g,h,i)perylene
 Concen: 852.080 ng/ul
 RT: 26.20 min Scan# 3946
 Delta R.T. -0.14 min
 Lab File: BM023218.D
 Acq: 17 Oct 2019 12:50

Tgt Ion: 276 Resp: 2597390

| Ion | Ratio | Lower | Upper |
|-----|-------|-------|-------|
| 276 | 100 | | |
| 138 | 35.1 | 14.4 | 21.6 |
| 277 | 57.0 | 19.4 | 29.2 |

