

Data Path : Z:\svoasrv\HPCHEM1\BNA_M\Data\BM103123\
 Data File : BM042531.D
 Acq On : 01 Nov 2023 03:25
 Operator : MA/JU
 Sample : 05048-01
 Misc :
 ALS Vial : 20 Sample Multiplier: 1

Instrument :
 BNA_M
 ClientSampleId :
 OILY-STONE

Quant Time: Nov 01 04:51:30 2023
 Quant Method : Z:\svoasrv\HPCHEM1\BNA_M\Methods\8270-BM103023.M
 Quant Title : ASP BNA STANDARDS FOR 5 POINT CALIBRATION
 QLast Update : Tue Oct 31 02:55:18 2023
 Response via : Initial Calibration

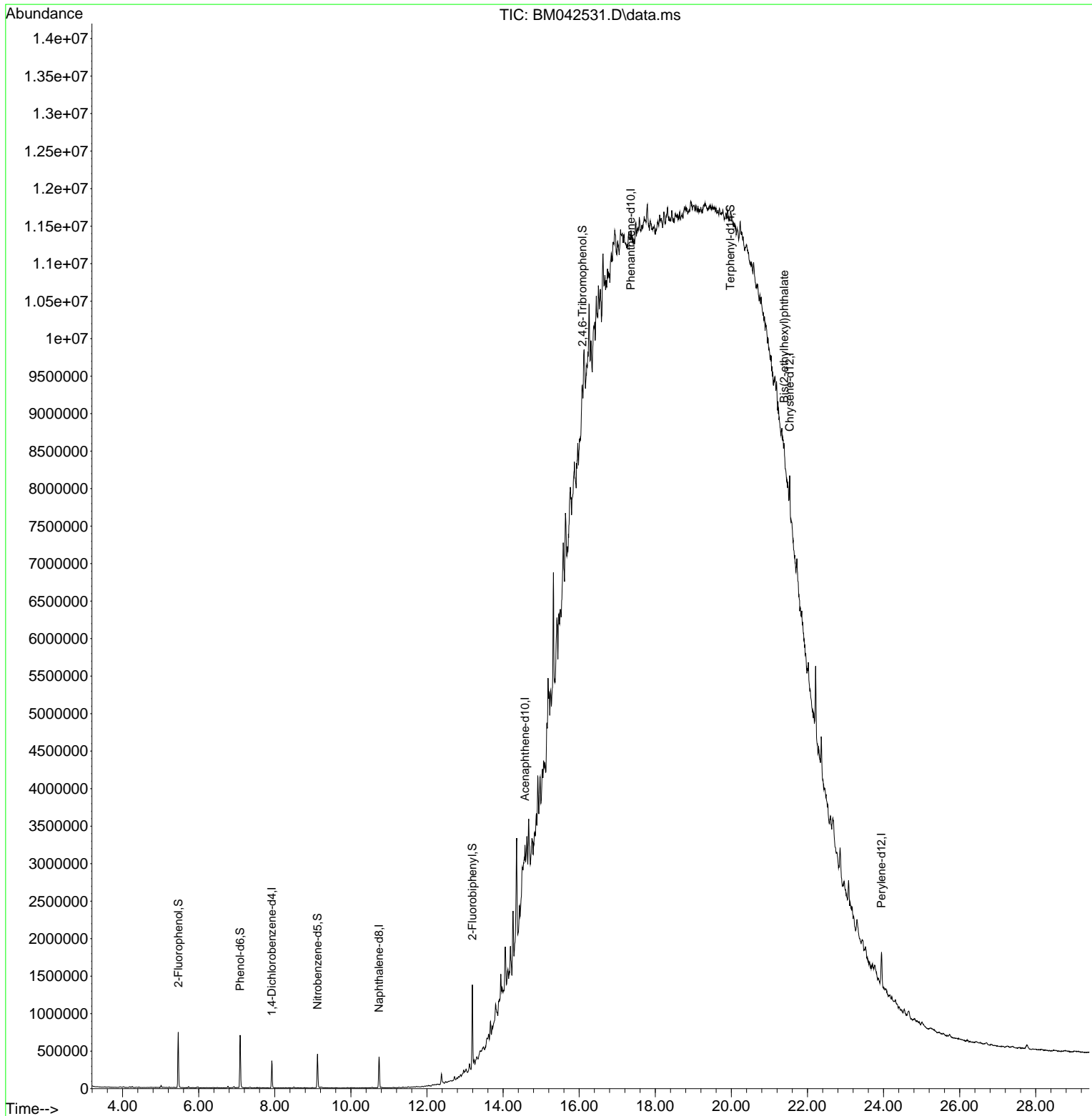
| Compound | R.T. | QIon | Response | Conc | Units | Dev(Min) |
|-------------------------------|--------|------|----------|--------|-------|----------|
| Internal Standards | | | | | | |
| 1) 1,4-Dichlorobenzene-d4 | 7.922 | 152 | 84351 | 20.000 | ng | 0.00 |
| 21) Naphthalene-d8 | 10.739 | 136 | 307578 | 20.000 | ng | -0.01 |
| 39) Acenaphthene-d10 | 14.574 | 164 | 183710 | 20.000 | ng | 0.00 |
| 64) Phenanthrene-d10 | 17.357 | 188 | 263619 | 20.000 | ng | # 0.03 |
| 76) Chrysene-d12 | 21.533 | 240 | 316721 | 20.000 | ng | # 0.02 |
| 86) Perylene-d12 | 23.944 | 264 | 360291 | 20.000 | ng | 0.01 |
| System Monitoring Compounds | | | | | | |
| 5) 2-Fluorophenol | 5.463 | 112 | 281461 | 53.852 | ng | 0.00 |
| 7) Phenol-d6 | 7.087 | 99 | 352889 | 49.231 | ng | -0.01 |
| 23) Nitrobenzene-d5 | 9.122 | 82 | 243399 | 36.889 | ng | -0.01 |
| 42) 2,4,6-Tribromophenol | 16.086 | 330 | 113015 | 47.119 | ng | 0.01 |
| 45) 2-Fluorobiphenyl | 13.192 | 172 | 502157 | 36.781 | ng | 0.00 |
| 79) Terphenyl-d14 | 19.974 | 244 | 424851 | 22.745 | ng | 0.03 |
| Target Compounds | | | | | | |
| 84) Bis(2-ethylhexyl)phtha... | 21.386 | 149 | 31304 | 2.230 | ng | # 71 |

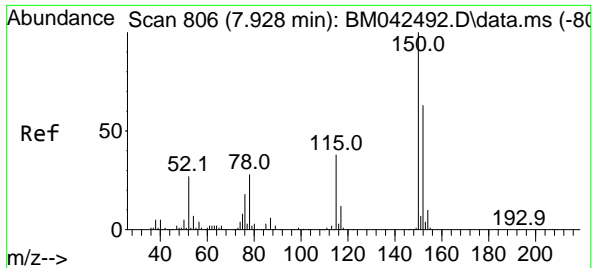
(#) = qualifier out of range (m) = manual integration (+) = signals summed

Data Path : Z:\svoasrv\HPCHEM1\BNA_M\Data\BM103123\
 Data File : BM042531.D
 Acq On : 01 Nov 2023 03:25
 Operator : MA/JU
 Sample : 05048-01
 Misc :
 ALS Vial : 20 Sample Multiplier: 1

Instrument :
 BNA_M
 ClientSampleId :
 OILY-STONE

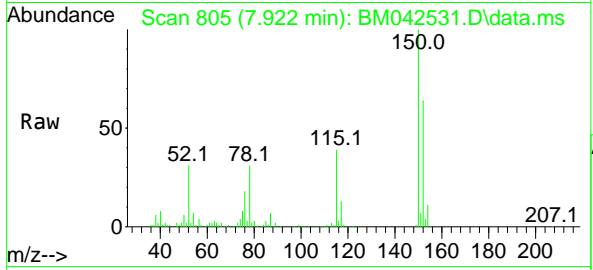
Quant Time: Nov 01 04:51:30 2023
 Quant Method : Z:\svoasrv\HPCHEM1\BNA_M\Methods\8270-BM103023.M
 Quant Title : ASP BNA STANDARDS FOR 5 POINT CALIBRATION
 QLast Update : Tue Oct 31 02:55:18 2023
 Response via : Initial Calibration





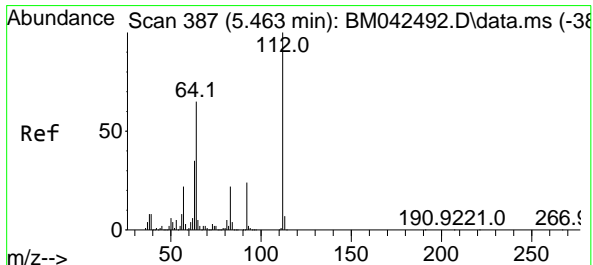
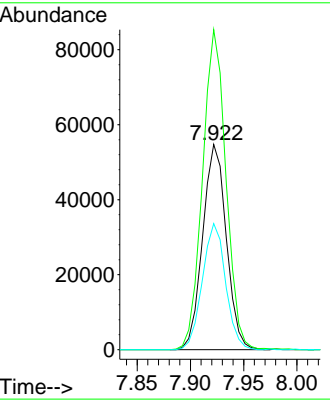
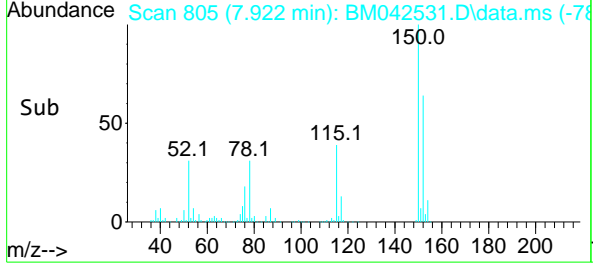
#1
 1,4-Dichlorobenzene-d4
 Concen: 20.000 ng
 RT: 7.922 min Scan# 805
 Delta R.T. -0.006 min
 Lab File: BM042531.D
 Acq: 01 Nov 2023 03:25

Instrument : BNA_M
 ClientSampleId : OILY-STONE

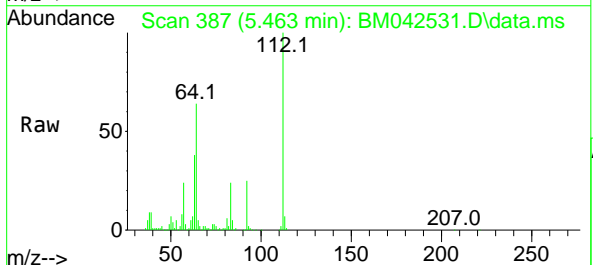


Tgt Ion:152 Resp: 84351

| Ion | Ratio | Lower | Upper |
|-----|-------|-------|-------|
| 152 | 100 | | |
| 150 | 155.9 | 127.4 | 191.0 |
| 115 | 61.4 | 47.9 | 71.9 |

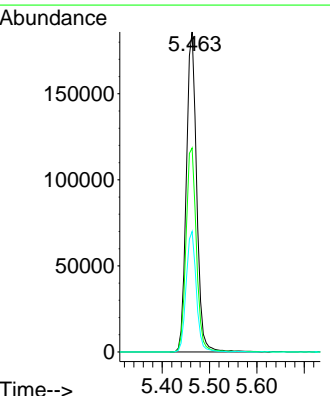
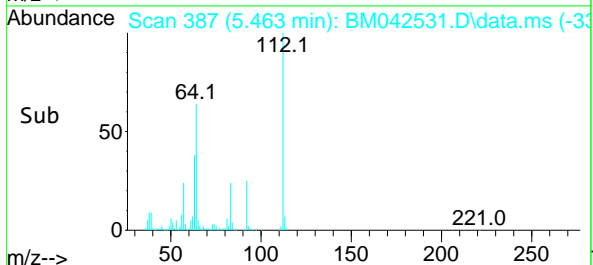


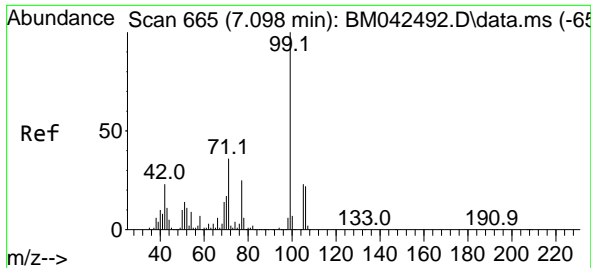
#5
 2-Fluorophenol
 Concen: 53.852 ng
 RT: 5.463 min Scan# 387
 Delta R.T. -0.000 min
 Lab File: BM042531.D
 Acq: 01 Nov 2023 03:25



Tgt Ion:112 Resp: 281461

| Ion | Ratio | Lower | Upper |
|-----|-------|-------|-------|
| 112 | 100 | | |
| 64 | 63.7 | 52.1 | 78.1 |
| 63 | 37.6 | 28.3 | 42.5 |

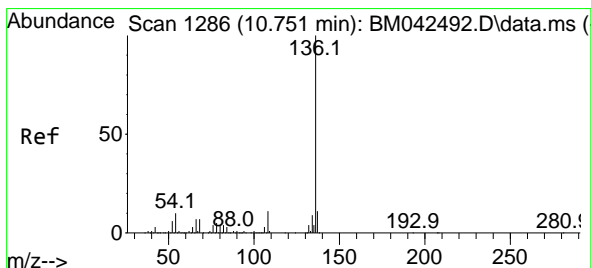
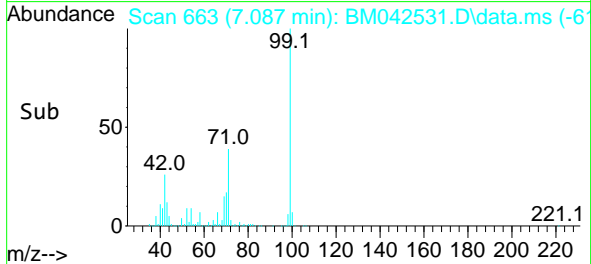
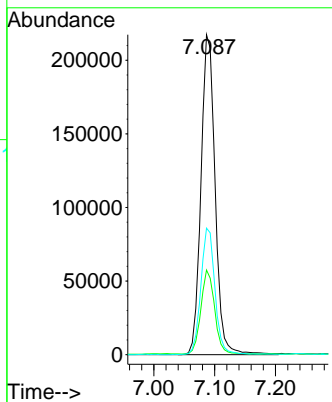
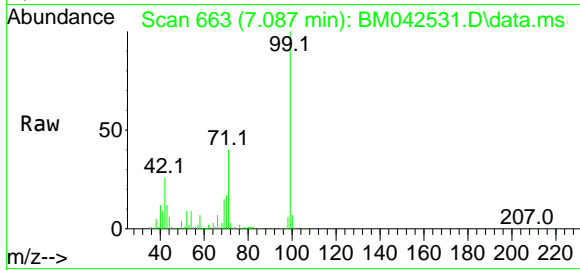




#7
 Phenol-d6
 Concen: 49.231 ng
 RT: 7.087 min Scan# 60
 Delta R.T. -0.012 min
 Lab File: BM042531.D
 Acq: 01 Nov 2023 03:25

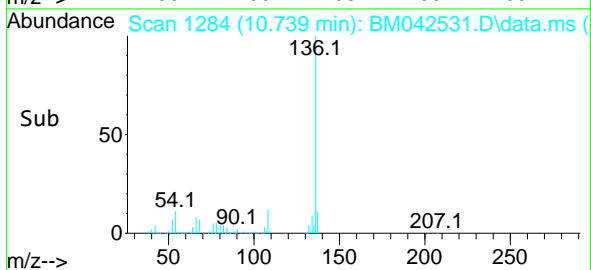
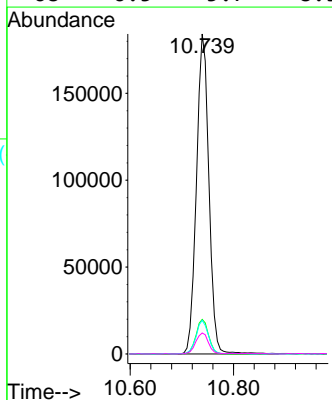
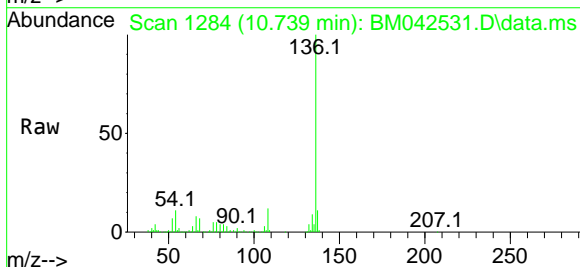
Instrument :
 BNA_M
 ClientSampleId :
 OILY-STONE

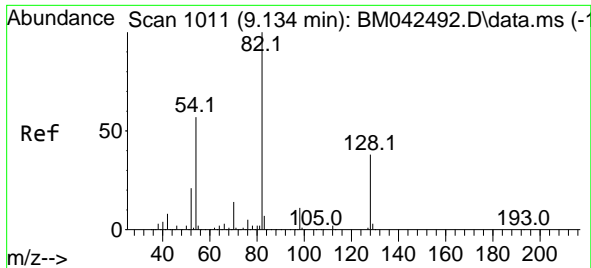
Tgt Ion: 99 Resp: 352889
 Ion Ratio Lower Upper
 99 100
 42 26.5 18.7 28.1
 71 39.6 29.1 43.7



#21
 Naphthalene-d8
 Concen: 20.000 ng
 RT: 10.739 min Scan# 1284
 Delta R.T. -0.012 min
 Lab File: BM042531.D
 Acq: 01 Nov 2023 03:25

Tgt Ion:136 Resp: 307578
 Ion Ratio Lower Upper
 136 100
 137 10.8 9.0 13.6
 54 10.5 8.0 12.0
 68 6.5 5.7 8.5





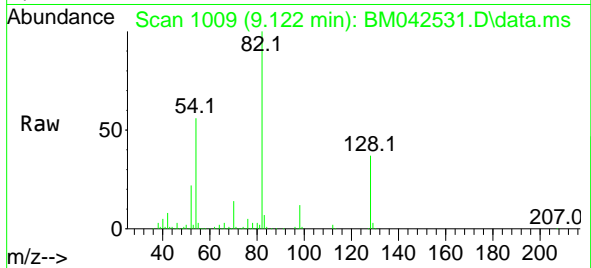
#23
 Nitrobenzene-d5
 Concen: 36.889 ng
 RT: 9.122 min Scan# 1011
 Delta R.T. -0.012 min
 Lab File: BM042531.D
 Acq: 01 Nov 2023 03:25

Instrument :

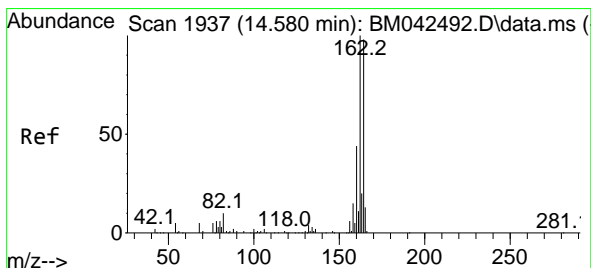
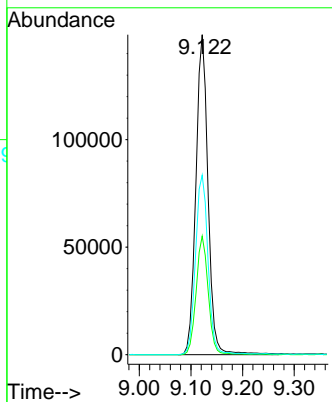
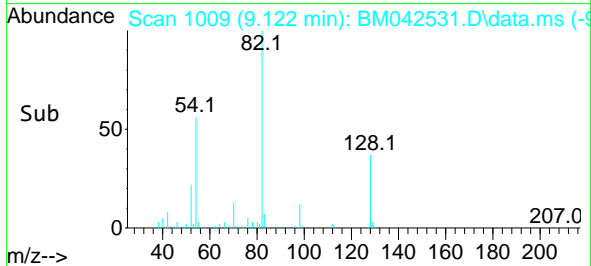
BNA_M

ClientSampleId :

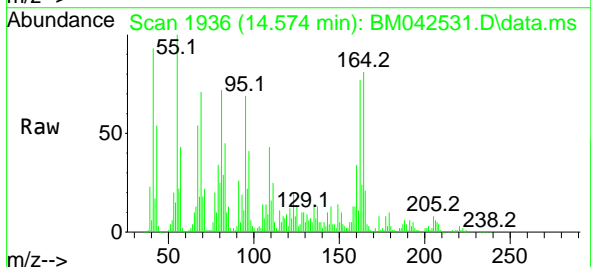
OILY-STONE



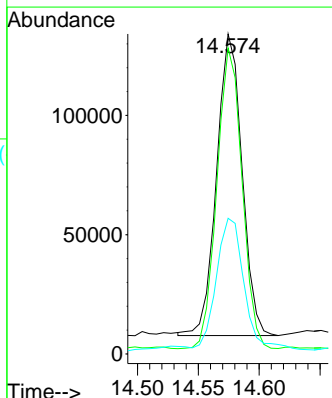
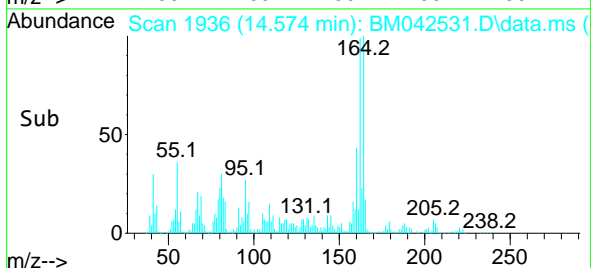
Tgt Ion: 82 Resp: 243399
 Ion Ratio Lower Upper
 82 100
 128 37.1 30.7 46.1
 54 56.1 45.3 67.9

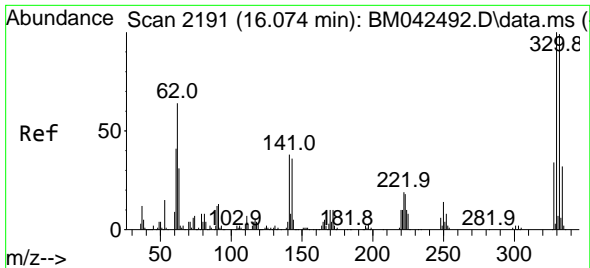


#39
 Acenaphthene-d10
 Concen: 20.000 ng
 RT: 14.574 min Scan# 1936
 Delta R.T. -0.006 min
 Lab File: BM042531.D
 Acq: 01 Nov 2023 03:25



Tgt Ion: 164 Resp: 183710
 Ion Ratio Lower Upper
 164 100
 162 95.6 81.6 122.4
 160 42.4 36.2 54.4





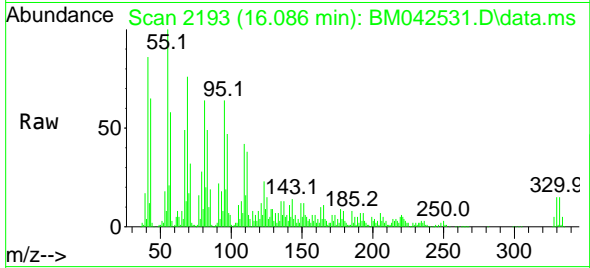
#42
 2,4,6-Tribromophenol
 Concen: 47.119 ng
 RT: 16.086 min Scan# 2191
 Delta R.T. 0.012 min
 Lab File: BM042531.D
 Acq: 01 Nov 2023 03:25

Instrument :

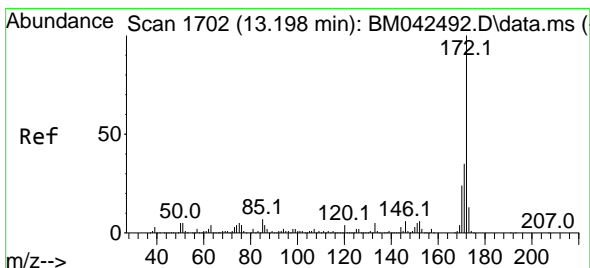
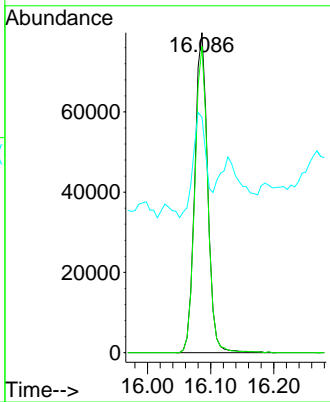
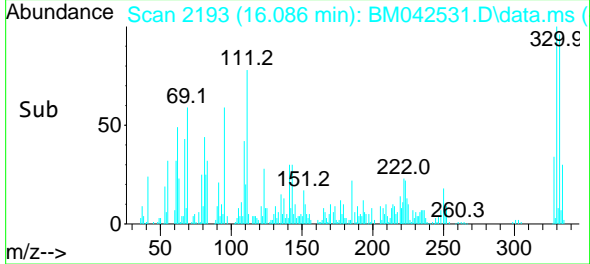
BNA_M

ClientSampleId :

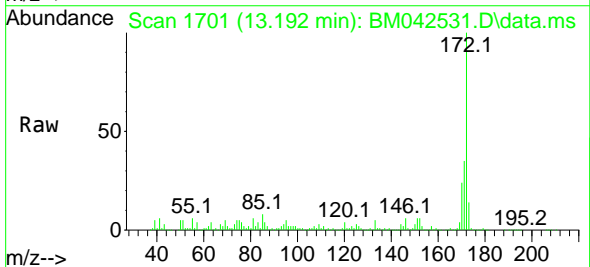
OILY-STONE



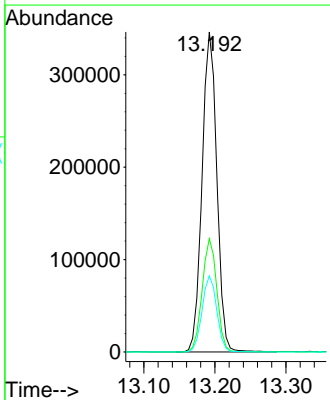
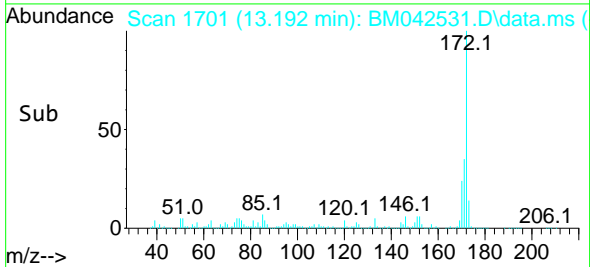
Tgt Ion:330 Resp: 113015
 Ion Ratio Lower Upper
 330 100
 332 96.3 78.8 118.2
 141 34.5 31.1 46.7

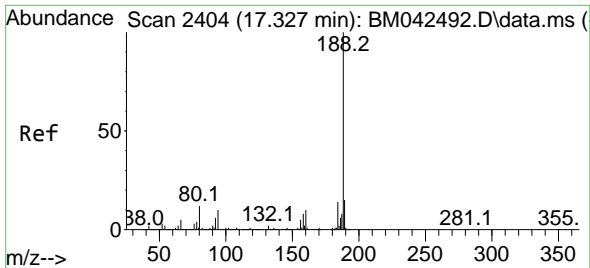


#45
 2-Fluorobiphenyl
 Concen: 36.781 ng
 RT: 13.192 min Scan# 1701
 Delta R.T. -0.006 min
 Lab File: BM042531.D
 Acq: 01 Nov 2023 03:25



Tgt Ion:172 Resp: 502157
 Ion Ratio Lower Upper
 172 100
 171 35.4 28.2 42.2
 170 23.8 19.0 28.4



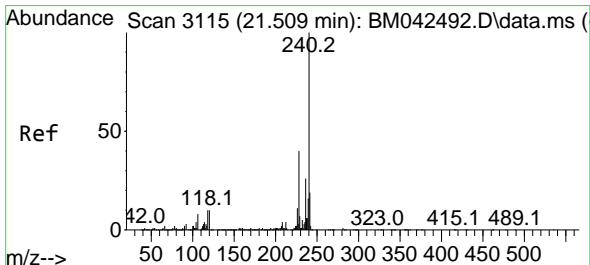
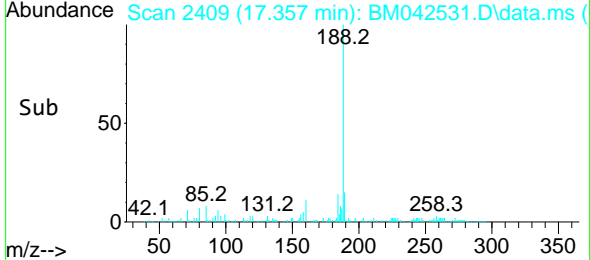
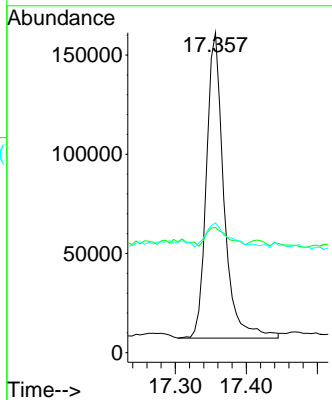
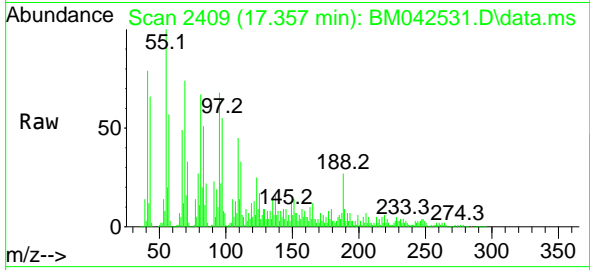


#64
 Phenanthrene-d10
 Concen: 20.000 ng
 RT: 17.357 min Scan# 2409
 Delta R.T. 0.030 min
 Lab File: BM042531.D
 Acq: 01 Nov 2023 03:25

Instrument : BNA_M
 ClientSampleId : OILY-STONE

Tgt Ion:188 Resp: 263619

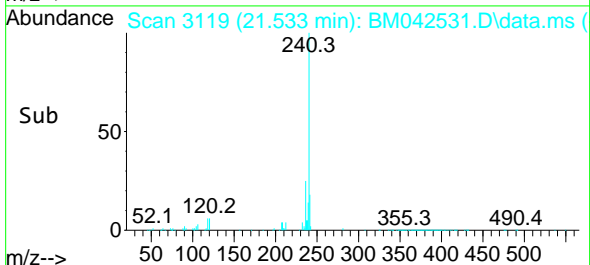
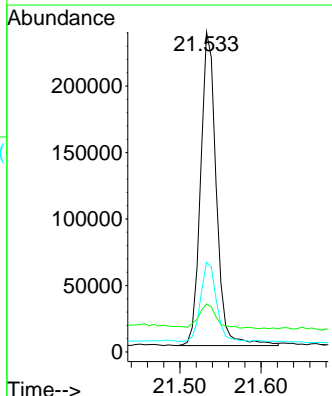
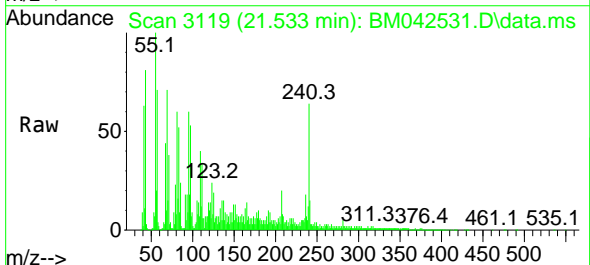
| Ion | Ratio | Lower | Upper |
|-----|-------|-------|-------|
| 188 | 100 | | |
| 94 | 39.1 | 8.2 | 12.4# |
| 80 | 40.5 | 9.4 | 14.2# |

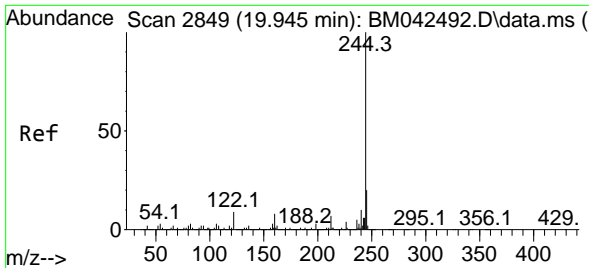


#76
 Chrysene-d12
 Concen: 20.000 ng
 RT: 21.533 min Scan# 3119
 Delta R.T. 0.023 min
 Lab File: BM042531.D
 Acq: 01 Nov 2023 03:25

Tgt Ion:240 Resp: 316721

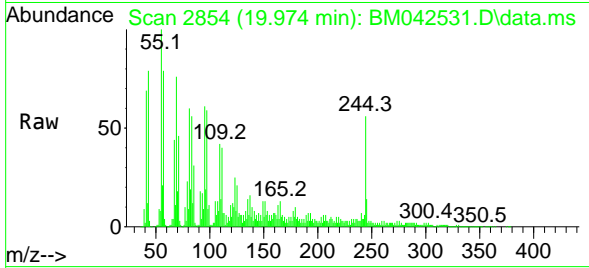
| Ion | Ratio | Lower | Upper |
|-----|-------|-------|-------|
| 240 | 100 | | |
| 120 | 15.0 | 8.3 | 12.5# |
| 236 | 28.1 | 20.8 | 31.2 |



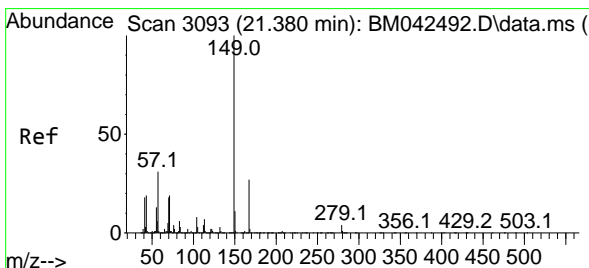
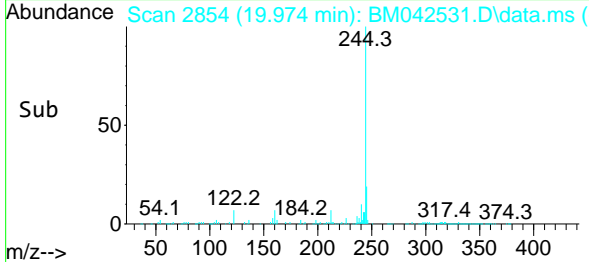
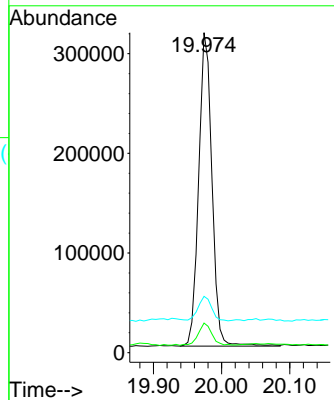


#79
 Terphenyl-d14
 Concen: 22.745 ng
 RT: 19.974 min Scan# 21
 Delta R.T. 0.029 min
 Lab File: BM042531.D
 Acq: 01 Nov 2023 03:25

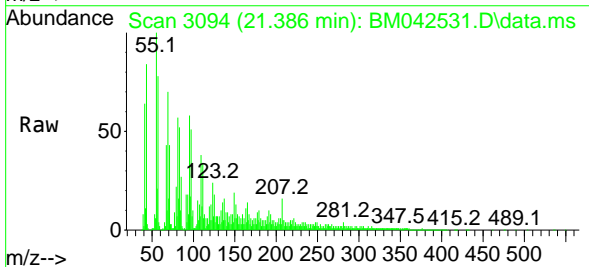
Instrument :
 BNA_M
 ClientSampleId :
 OILY-STONE



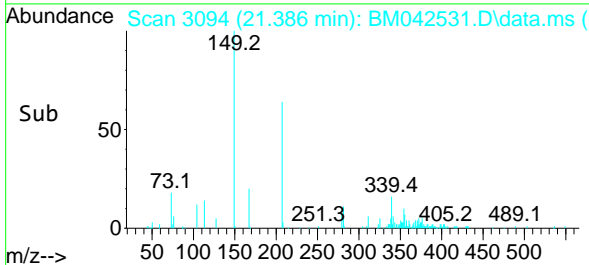
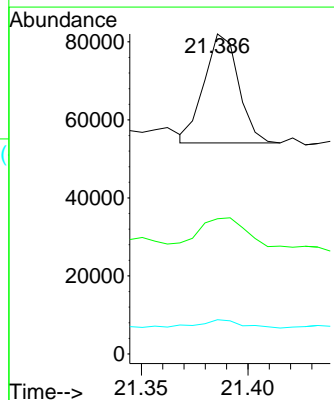
Tgt Ion:244 Resp: 424851
 Ion Ratio Lower Upper
 244 100
 212 9.2 5.4 8.2#
 122 17.6 7.2 10.8#

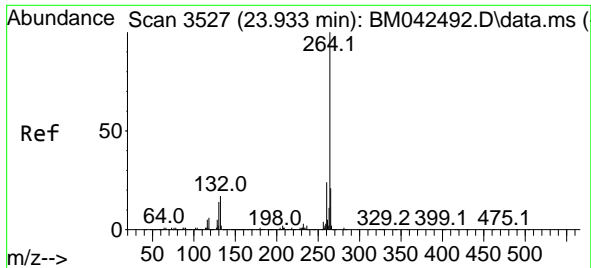


#84
 Bis(2-ethylhexyl)phthalate
 Concen: 2.230 ng
 RT: 21.386 min Scan# 3094
 Delta R.T. 0.006 min
 Lab File: BM042531.D
 Acq: 01 Nov 2023 03:25



Tgt Ion:149 Resp: 31304
 Ion Ratio Lower Upper
 149 100
 167 42.2 21.4 32.0#
 279 10.7 3.4 5.2#





#86

Perylene-d12

Concen: 20.000 ng

RT: 23.944 min Scan# 31

Delta R.T. 0.012 min

Lab File: BM042531.D

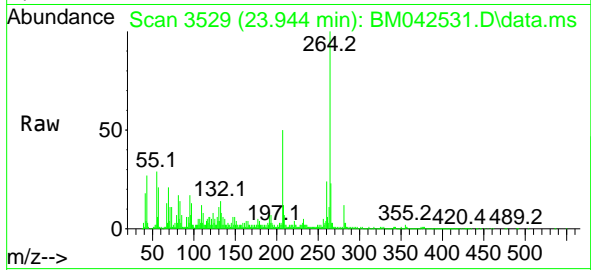
Acq: 01 Nov 2023 03:25

Instrument :

BNA_M

ClientSampleId :

OILY-STONE



Tgt Ion:264 Resp: 360291

Ion Ratio Lower Upper

264 100

260 24.4 19.0 28.4

265 22.6 18.7 28.1

