

Data Path : Z:\SVOASRV\HPCHEM1\BNA M\DATA\BM111119\  
 Data File : BM023641.D  
 Acq On : 11 Nov 2019 17:53  
 Operator : JU  
 Sample : PB124341BL  
 Misc :  
 ALS Vial : 14 Sample Multiplier: 1

Instrument :  
 BNA\_M  
 ClientSampled :  
 SBLK41

Integration Parameters: LSCINT.P

Integrator: RTE  
 Smoothing : OFF  
 Sampling : 1  
 Start Thrs: 0.2  
 Stop Thrs : 0

Filtering: 5  
 Min Area: 0.1 % of largest Peak  
 Max Peaks: 100  
 Peak Location: TOP

If leading or trailing edge < 100 prefer < Baseline drop else tangent >  
 Peak separation: 5

Method : Z:\SVOASRV\HPCHEM1\BNA\_M\METHODS\SOM-EPA-BM111119MA.M  
 Title : SVOA CALIBRATION

Signal : TIC

peak #	R.T. min	first scan	max scan	last scan	PK TY	peak height	corr. area	corr. % max.	% of total
1	3.081	30	33	42	rVB3	24417	50358	0.35%	0.044%
2	3.787	151	153	160	rVB2	22738	31036	0.22%	0.027%
3	6.734	648	654	662	rBV	336460	547188	3.85%	0.477%
4	6.892	675	681	697	rBV	1398595	2257335	15.88%	1.968%
5	7.081	707	713	724	rBV	1387419	2240489	15.77%	1.954%
6	7.545	785	792	803	rBV	1285926	2038770	14.35%	1.778%
7	7.633	803	807	811	rVB4	11684	18483	0.13%	0.016%
8	8.257	907	913	928	rBV	1070855	1745392	12.28%	1.522%
9	8.369	928	932	943	rVB2	45852	81798	0.58%	0.071%
10	8.698	980	988	997	rBV	1784033	2887643	20.32%	2.518%
11	8.833	1009	1011	1018	rVB6	8317	14606	0.10%	0.013%
12	9.416	1102	1110	1127	rBV	1437916	2307904	16.24%	2.012%
13	9.951	1194	1201	1213	rBV	2196618	3656266	25.73%	3.188%
14	10.275	1248	1256	1257	rBV5	9782	14775	0.10%	0.013%
15	10.322	1257	1264	1274	rVB	1937269	3183650	22.40%	2.776%
16	11.927	1531	1537	1546	rVB	37108	68428	0.48%	0.060%
17	13.621	1818	1825	1838	rBV	4965520	6897838	48.54%	6.015%
18	13.892	1864	1871	1887	rBV	5338642	7645903	53.80%	6.667%
19	14.204	1917	1924	1936	rBV	3430825	4902139	34.49%	4.275%
20	14.415	1955	1960	1976	rBV	265062	444066	3.12%	0.387%
21	15.204	2087	2094	2105	rBV	7364399	10434788	73.43%	9.099%
22	15.333	2109	2116	2130	rVV	1998151	2775191	19.53%	2.420%
23	15.445	2130	2135	2140	rVB2	86667	129514	0.91%	0.113%
24	15.909	2206	2214	2223	rBV	117251	174313	1.23%	0.152%
25	15.986	2223	2227	2234	rVB2	27917	40739	0.29%	0.036%
26	16.633	2334	2337	2341	rBV4	12053	15160	0.11%	0.013%
27	16.739	2348	2355	2360	rBV2	20519	29947	0.21%	0.026%
28	16.951	2384	2391	2401	rBV	4445533	6157916	43.33%	5.370%
29	17.051	2401	2408	2424	rBV	8553904	11680653	82.19%	10.185%
30	17.868	2544	2547	2552	rBV2	36536	51520	0.36%	0.045%
31	18.986	2732	2737	2744	rBV	88139	127391	0.90%	0.111%
32	19.162	2764	2767	2775	rBV7	25773	44783	0.32%	0.039%
33	19.239	2776	2780	2785	rVB	74583	97179	0.68%	0.085%
34	19.356	2793	2800	2815	rBV	10126988	14211435	100.00%	12.392%

Data Path : Z:\SVOASRV\HPCHEM1\BNA M\DATA\BM111119\  
Data File : BM023641.D  
Acq On : 11 Nov 2019 17:53  
Operator : JU  
Sample : PB124341BL  
Misc :  
ALS Vial : 14 Sample Multiplier: 1

Instrument :  
BNA\_M  
ClientSampleId :  
SBLK41

Integration Parameters: LSCINT.P  
Integrator: RTE  
Smoothing : OFF Filtering: 5  
Sampling : 1 Min Area: 0.1 % of largest Peak  
Start Thrs: 0.2 Max Peaks: 100  
Stop Thrs : 0 Peak Location: TOP

If leading or trailing edge < 100 prefer < Baseline drop else tangent >  
Peak separation: 5

Method : Z:\SVOASRV\HPCHEM1\BNA\_M\METHODS\SOM-EPA-BM111119MA.M  
Title : SVOA CALIBRATION

35	21.150	3100	3105	3117	rBV	5819575	7329887	51.58%	6.392%
36	23.180	3443	3450	3458	rBV	7808274	13387252	94.20%	11.674%
37	23.315	3467	3473	3484	rVB	3831694	6958736	48.97%	6.068%

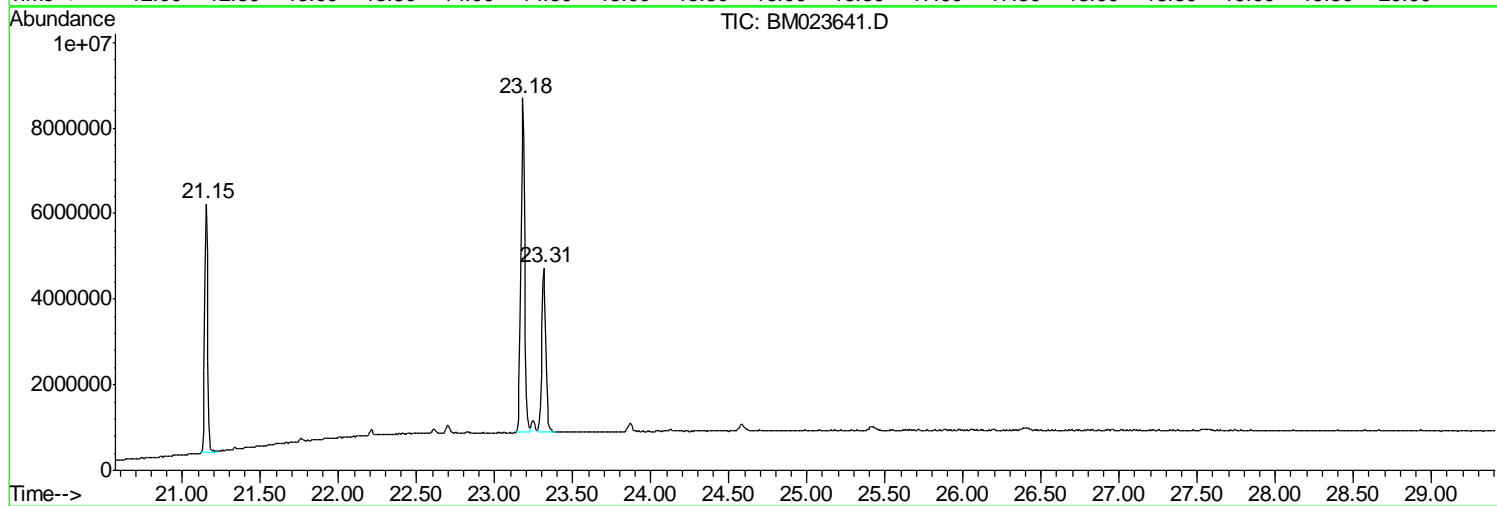
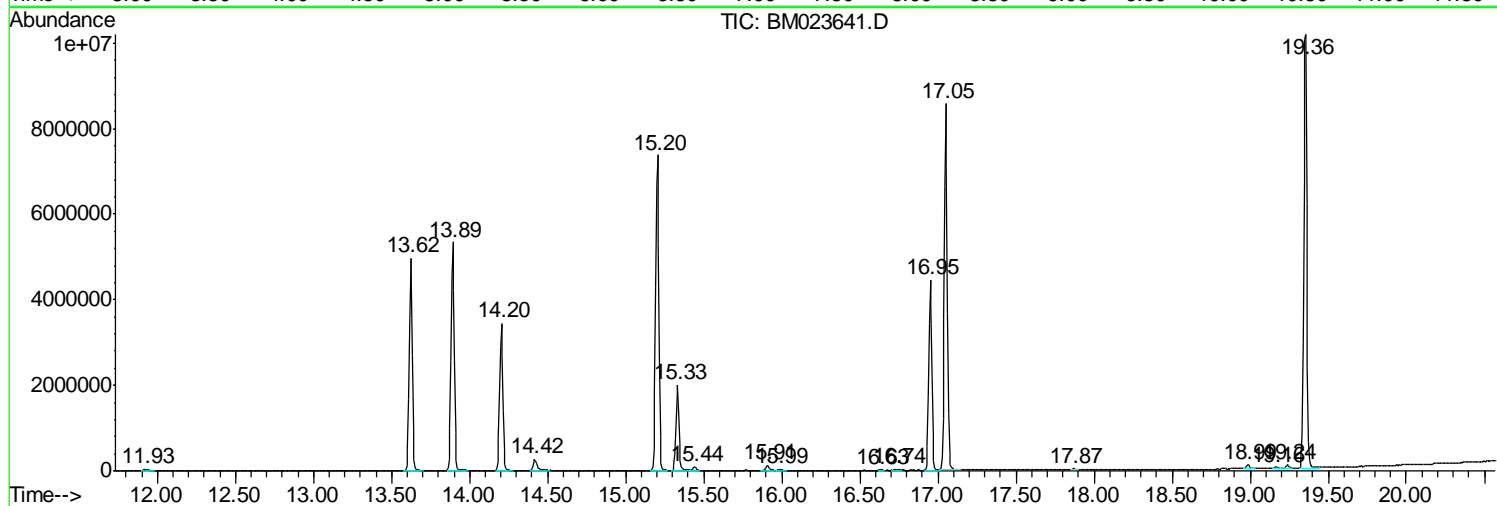
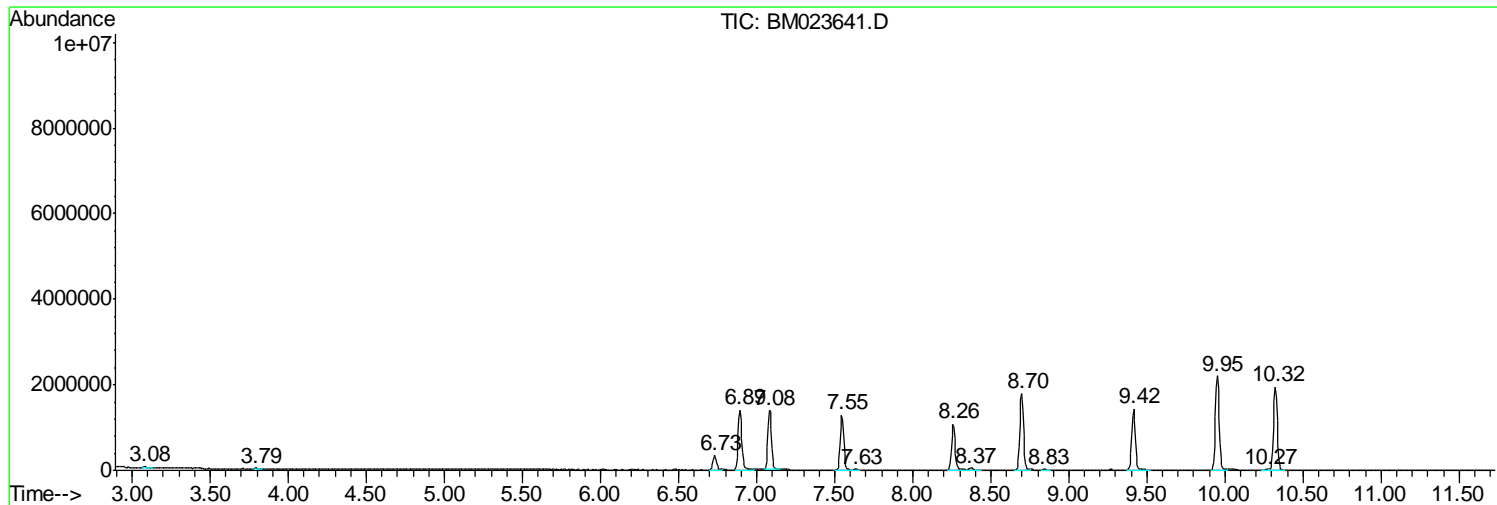
Sum of corrected areas: 114680471

Data Path : Z:\SVOASRV\HPCHEM1\BNA M\DATA\BM111119\  
 Data File : BM023641.D  
 Acq On : 11 Nov 2019 17:53  
 Operator : JU  
 Sample : PB124341BL  
 Misc :  
 ALS Vial : 14 Sample Multiplier: 1

Instrument :  
 BNA\_M  
 ClientSampled :  
 SBLK41

Quant Method : Z:\SVOASRV\HPCHEM1\BNA\_M\METHODS\SOM-EPA-BM111119MA.M  
 Quant Title : SVOA CALIBRATION

TIC Library : C:\DATABASE\NIST11.L  
 TIC Integration Parameters: LSCINT.P



Data Path : Z:\SVOASRV\HPCHEM1\BNA\_M\DATA\BM111119\  
Data File : BM023641.D  
Acq On : 11 Nov 2019 17:53  
Operator : JU  
Sample : PB124341BL  
Misc :  
ALS Vial : 14 Sample Multiplier: 1

**Instrument :**  
BNA\_M  
**ClientSampleId :**  
SBLK41

Quant Method : Z:\SVOASRV\HPCHEM1\BNA\_M\METHODS\SOM-EPA-BM111119MA.M  
Quant Title : SVOA CALIBRATION

TIC Library : C:\DATABASE\NIST11.L  
TIC Integration Parameters: LSCINT.P

No Library Search Compounds Detected

\*\*\*\*\*

Data Path : Z:\SVOASRV\HPCHEM1\BNA\_M\DATA\BM111119\  
Data File : BM023641.D  
Acq On : 11 Nov 2019 17:53  
Operator : JU  
Sample : PB124341BL  
Misc :  
ALS Vial : 14 Sample Multiplier: 1

Instrument :  
BNA\_M  
ClientSampleId :  
SBLK41

Quant Method : Z:\SVOASRV\HPCHEM1\BNA\_M\METHODS\SOM-EPA-BM111119MA.M  
Quant Title : SVOA CALIBRATION

TIC Library : C:\DATABASE\NIST11.L  
TIC Integration Parameters: LSCINT.P

TIC Top Hit name	RT	EstConc	Units	Response	--Internal Standard--			
					#	RT	Resp	Conc

---