

Data Path : Z:\svoasrv\HPCHEM1\BNA_M\Data\BM111323\
 Data File : BM042748.D
 Acq On : 14 Nov 2023 23:47
 Operator : MA/JU
 Sample : PB156739BS
 Misc :
 ALS Vial : 50 Sample Multiplier: 1

Instrument :
 BNA_M
 ClientSampleId :

Quant Time: Nov 15 03:35:31 2023
 Quant Method : Z:\svoasrv\HPCHEM1\BNA_M\Methods\SFAM-EPA-BM111323.MA.M
 Quant Title : SVOA CALIBRATION
 QLast Update : Tue Nov 14 00:02:28 2023
 Response via : Initial Calibration

Compound	R.T.	QIon	Response	Conc	Units	Dev(Min)
Internal Standards						
1) 1,4-Dichlorobenzene-d4	7.834	152	17929	20.000	ng/ul	0.00
20) Naphthalene-d8	10.645	136	75839	20.000	ng/ul	-0.01
38) Acenaphthene-d10	14.486	164	50533	20.000	ng/ul	-0.01
64) Phenanthrene-d10	17.239	188	113178	20.000	ng/ul	-0.01
79) Chrysene-d12	21.421	240	128536	20.000	ng/ul	#-0.01
88) Perylene-d12	23.786	264	137477	20.000	ng/ul	-0.02
System Monitoring Compounds						
3) 1,4-Dioxane-d8	3.175	96	5819	10.184	ng/uL	-0.01
4) Pyridine-d5	3.616	84	76934	54.129	ng/ul	-0.01
7) Phenol-d5	6.998	99	96310	55.194	ng/ul	0.00
9) Bis-(2-Chloroethyl)eth...	7.181	67	70875	57.804	ng/ul	0.00
11) 2-Chlorophenol-d4	7.351	132	70081	52.050	ng/ul	-0.01
15) 4-Methylphenol-d8	8.557	113	72560	52.812	ng/ul	0.00
21) Nitrobenzene-d5	9.034	128	34367	51.686	ng/ul	0.00
24) 2-Nitrophenol-d4	9.745	143	37851	48.662	ng/ul	0.00
28) 2,4-Dichlorophenol-d3	10.269	165	74926	51.805	ng/ul	0.00
31) 4-Chloroaniline-d4	10.822	131	77782	42.357	ng/ul	0.00
46) Dimethylphthalate-d6	13.910	166	237329	49.623	ng/ul	0.00
49) Acenaphthylene-d8	14.186	160	255806	49.990	ng/ul	-0.01
54) 4-Nitrophenol-d4	14.739	143	26713	49.438	ng/ul	0.00
60) Fluorene-d10	15.480	176	197193	49.791	ng/ul	-0.01
65) 4,6-Dinitro-2-methylph...	15.627	200	40659	47.427	ng/ul	-0.01
73) Anthracene-d10	17.339	188	311259	49.073	ng/ul	-0.01
81) Pyrene-d10	19.639	212	413013	49.069	ng/ul	0.00
92) Benzo(a)pyrene-d12	23.633	264	425135	51.699	ng/ul	-0.02
Target Compounds						
2) 1,4-Dioxane	3.216	88	13218	21.722	ng/uL#	87
5) Pyridine	3.634	79	87983	56.928	ng/ul	99
6) Benzaldehyde	6.998	77	56191	56.127	ng/ul	96
8) Phenol	7.028	94	106756	61.507	ng/ul	99
10) Bis(2-Chloroethyl)ether	7.275	93	85926	59.932	ng/ul	95
12) 2-Chlorophenol	7.387	128	78027	58.231	ng/ul#	89
13) 2-Methylphenol	8.287	108	72074	55.685	ng/ul	92
14) 2,2'-oxybis(1-Chloropr...	8.345	45	88015	33.723	ng/ul	98
16) Acetophenone	8.687	105	129956	56.252	ng/ul	96
17) N-Nitroso-di-n-propyla...	8.651	70	83420	59.317	ng/ul	93
18) 4-Methylphenol	8.622	108	82572	58.678	ng/ul	95
19) Hexachloroethane	8.887	117	43063	57.661	ng/ul	93
22) Nitrobenzene	9.075	77	119944	59.684	ng/ul	98
23) Isophorone	9.581	82	227472	56.832	ng/ul	97
25) 2-Nitrophenol	9.775	139	42582	53.882	ng/ul	89
26) 2,4-Dimethylphenol	9.822	107	78345	46.334	ng/ul	97
27) Bis(2-Chloroethoxy)met...	10.075	93	116804	57.750	ng/ul	98
29) 2,4-Dichlorophenol	10.298	162	75638	55.237	ng/ul	99
30) Naphthalene	10.698	128	260331	54.793	ng/ul	100
32) 4-Chloroaniline	10.845	127	76057	43.171	ng/ul	100
33) Hexachlorobutadiene	10.916	225	63102	52.168	ng/ul	96
34) Caprolactam	11.669	113	21122	52.023	ng/ul	89
35) 4-Chloro-3-methylphenol	11.951	107	85967	58.589	ng/ul	97
36) 2-Methylnaphthalene	12.310	142	174220	54.711	ng/ul	99

Data Path : Z:\svoasrv\HPCHEM1\BNA_M\Data\BM111323\
 Data File : BM042748.D
 Acq On : 14 Nov 2023 23:47
 Operator : MA/JU
 Sample : PB156739BS
 Misc :
 ALS Vial : 50 Sample Multiplier: 1

Instrument :
 BNA_M
 ClientSampleId :

Quant Time: Nov 15 03:35:31 2023
 Quant Method : Z:\svoasrv\HPCHEM1\BNA_M\Methods\SFAM-EPA-BM111323.MA.M
 Quant Title : SVOA CALIBRATION
 QLast Update : Tue Nov 14 00:02:28 2023
 Response via : Initial Calibration

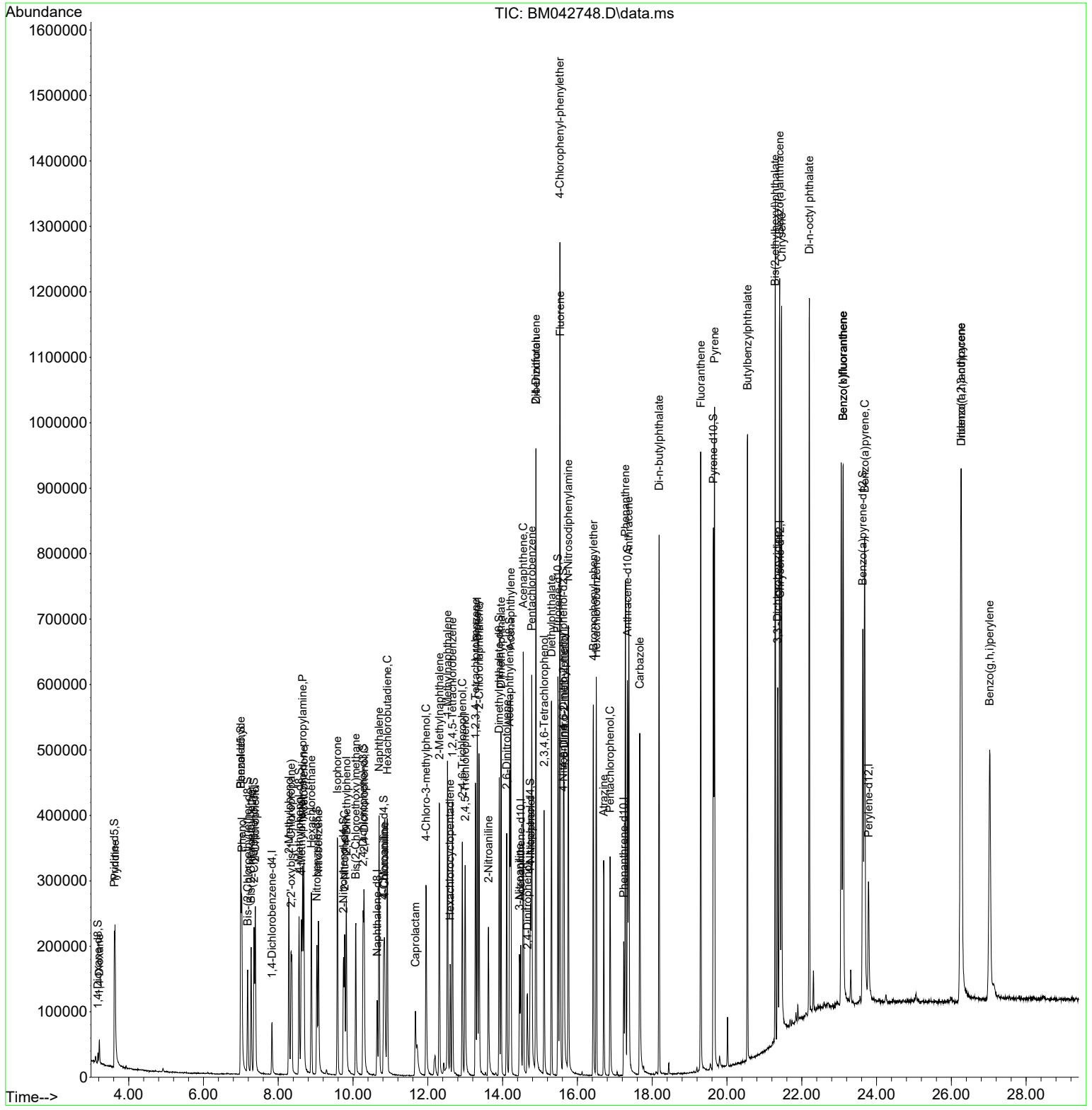
Compound	R.T.	QIon	Response	Conc	Units	Dev(Min)
37) 1-Methylnaphthalene	12.528	142	175556	52.436	ng/ul	97
39) 1,2,4,5-Tetrachloroben...	12.657	216	107907	54.448	ng/ul	98
40) Hexachlorocyclopentadiene	12.598	237	36647	39.058	ng/ul	96
41) 2,4,6-Trichlorophenol	12.922	196	65718	54.288	ng/ul	95
42) 2,4,5-Trichlorophenol	12.998	196	71030	60.766	ng/ul	100
43) 1,1'-Biphenyl	13.322	154	233705	55.456	ng/ul	97
44) 2-Chloronaphthalene	13.369	162	188217	55.517	ng/ul	96
45) 2-Nitroaniline	13.622	65	73194	66.199	ng/ul	95
47) Dimethylphthalate	13.957	163	256849	55.139	ng/ul	99
48) 2,6-Dinitrotoluene	14.110	165	49553	56.623	ng/ul	92
50) Acenaphthylene	14.216	152	325183	56.713	ng/ul	98
51) 3-Nitroaniline	14.451	138	37758	52.762	ng/ul	97
52) Acenaphthene	14.551	153	217236	56.020	ng/ul	97
53) 2,4-Dinitrophenol	14.663	184	21158	48.623	ng/ul	89
55) 4-Nitrophenol	14.751	109	46981	55.253	ng/ul	99
56) Dibenzofuran	14.892	168	305025	56.672	ng/ul	99
57) 2,4-Dinitrotoluene	14.892	165	74665	58.114	ng/ul	92
58) 2,3,4,6-Tetrachlorophenol	15.110	232	64908	53.494	ng/ul#	97
59) Diethylphthalate	15.310	149	266502	54.559	ng/ul	99
61) Fluorene	15.539	166	262733	57.496	ng/ul	99
62) 4-Chlorophenyl-phenyle...	15.533	204	141034	57.268	ng/ul	96
63) 4-Nitroaniline	15.621	138	39253	60.166	ng/ul	95
66) 4,6-Dinitro-2-methylph...	15.645	198	48040	55.042	ng/ul	94
67) N-Nitrosodiphenylamine	15.757	169	201167	56.672	ng/ul	99
68) 4-Bromophenyl-phenylether	16.427	248	83431	55.381	ng/ul	90
69) Hexachlorobenzene	16.510	284	101756	55.252	ng/ul	97
70) Atrazine	16.704	200	48865	35.738	ng/ul	97
71) Pentachlorophenol	16.874	266	51574	48.632	ng/ul	99
72) Phenanthrene	17.286	178	401790	56.826	ng/ul	99
74) Anthracene	17.374	178	405085	56.959	ng/ul	99
75) 1,2,3,4-Tetrachloroben...	13.275	216	111252	55.591	ng/uL	99
76) Pentachlorobenzene	14.780	250	109342	52.071	ng/uL	99
77) Carbazole	17.668	167	336185	57.248	ng/ul	100
78) Di-n-butylphthalate	18.186	149	468567	54.565	ng/ul	99
80) Fluoranthene	19.298	202	512161	53.366	ng/ul	97
82) Pyrene	19.668	202	554195	54.461	ng/ul	100
83) Butylbenzylphthalate	20.551	149	219577	50.520	ng/ul	97
84) 3,3'-Dichlorobenzidine	21.356	252	151621	46.090	ng/ul	98
85) Benzo(a)anthracene	21.409	228	546931	54.205	ng/ul	99
86) Bis(2-ethylhexyl)phtha...	21.292	149	328213	49.772	ng/ul	99
87) Chrysene	21.462	228	541104	55.296	ng/ul	99
89) Di-n-octyl phthalate	22.203	149	578561	52.099	ng/ul	100
90) Benzo(b)fluoranthene	23.109	252	586576	62.521	ng/ul	98
91) Benzo(k)fluoranthene	23.109	252	586576	58.732	ng/ul	99
93) Benzo(a)pyrene	23.686	252	529306	57.897	ng/ul	99
94) Indeno(1,2,3-cd)pyrene	26.256	276	666305	58.644	ng/ul	97
95) Dibenzo(a,h)anthracene	26.268	278	550402	58.431	ng/ul	99
96) Benzo(g,h,i)perylene	27.027	276	515461	57.132	ng/ul	99

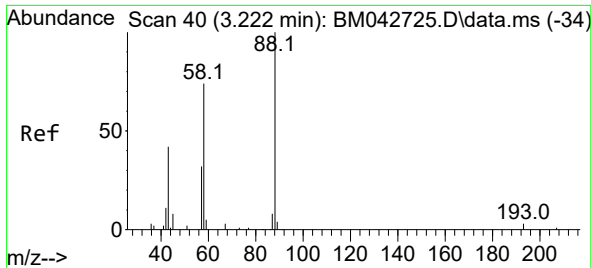
(#) = qualifier out of range (m) = manual integration (+) = signals summed

Data Path : Z:\svoasrv\HPCHEM1\BNA_M\Data\BM111323\
 Data File : BM042748.D
 Acq On : 14 Nov 2023 23:47
 Operator : MA/JU
 Sample : PB156739BS
 Misc :
 ALS Vial : 50 Sample Multiplier: 1

Instrument :
 BNA_M
 ClientSampleId :

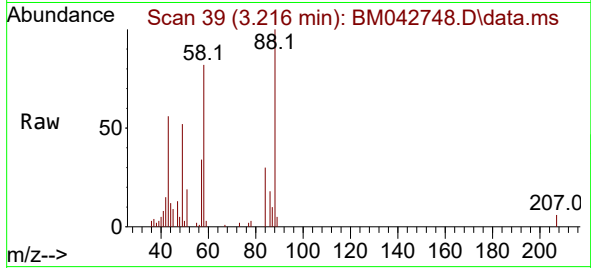
Quant Time: Nov 15 03:35:31 2023
 Quant Method : Z:\svoasrv\HPCHEM1\BNA_M\Methods\SFAM-EPA-BM111323.MA.M
 Quant Title : SVOA CALIBRATION
 QLast Update : Tue Nov 14 00:02:28 2023
 Response via : Initial Calibration



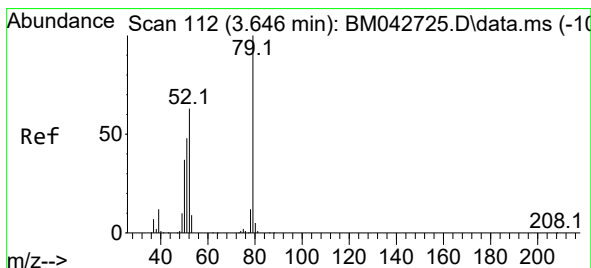
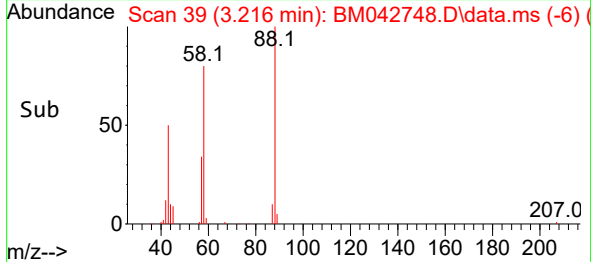
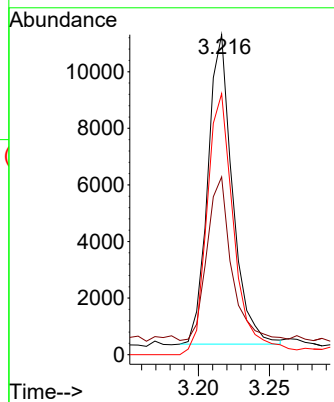


#2
 1,4-Dioxane
 Concen: 21.722 ng/uL
 RT: 3.216 min Scan# 39
 Delta R.T. -0.006 min
 Lab File: BM042748.D
 Acq: 14 Nov 2023 23:47

Instrument :
 BNA_M
 ClientSampleId :

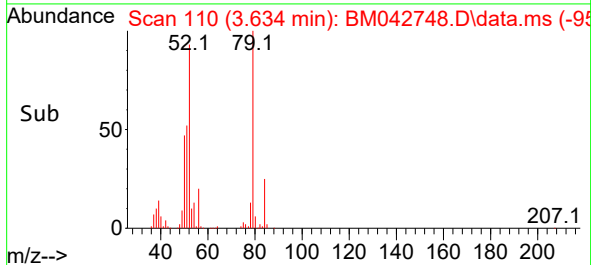
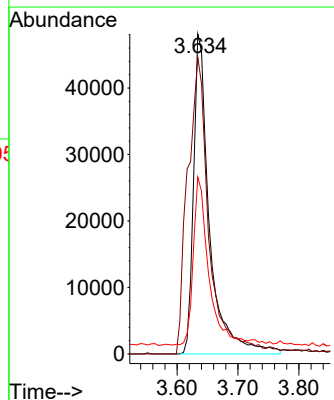
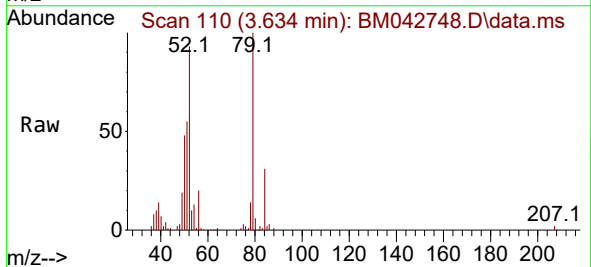


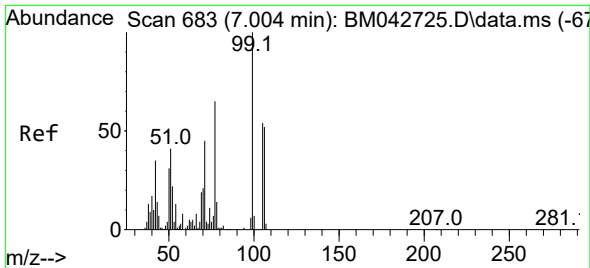
Tgt Ion: 88 Resp: 13218
 Ion Ratio Lower Upper
 88 100
 43 55.6 34.3 51.5#
 58 81.6 59.4 89.0



#5
 Pyridine
 Concen: 56.928 ng/uL
 RT: 3.634 min Scan# 110
 Delta R.T. -0.012 min
 Lab File: BM042748.D
 Acq: 14 Nov 2023 23:47

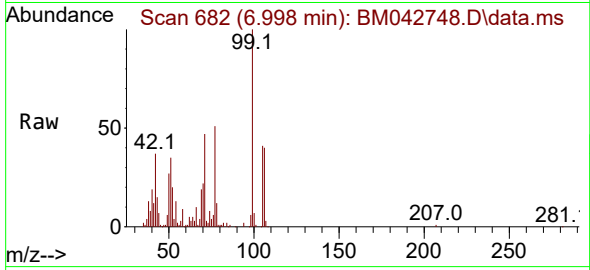
Tgt Ion: 79 Resp: 87983
 Ion Ratio Lower Upper
 79 100
 52 92.7 74.6 111.8
 51 55.2 44.6 67.0



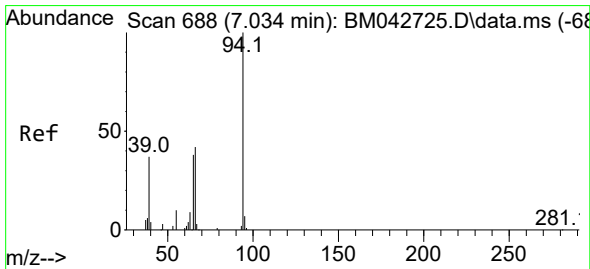
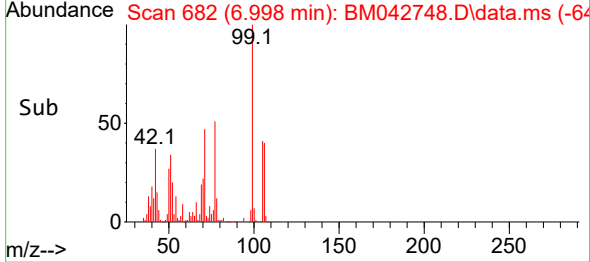
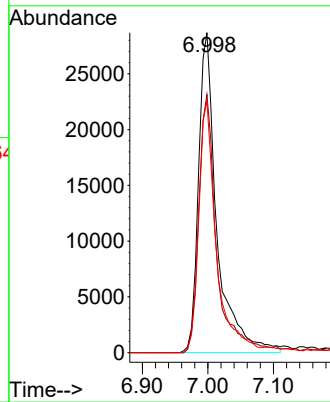


#6
 Benzaldehyde
 Concen: 56.127 ng/ul
 RT: 6.998 min Scan# 682
 Delta R.T. -0.006 min
 Lab File: BM042748.D
 Acq: 14 Nov 2023 23:47

Instrument : BNA_M
 ClientSampleId :

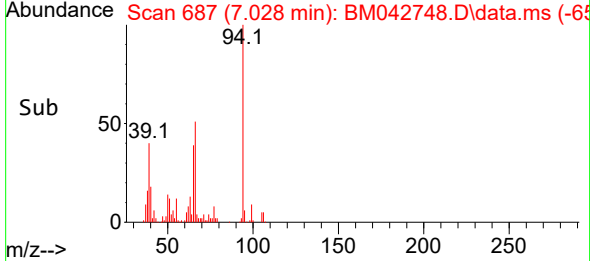
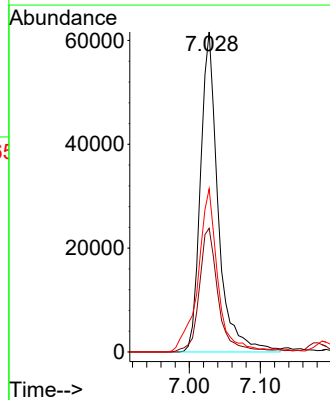
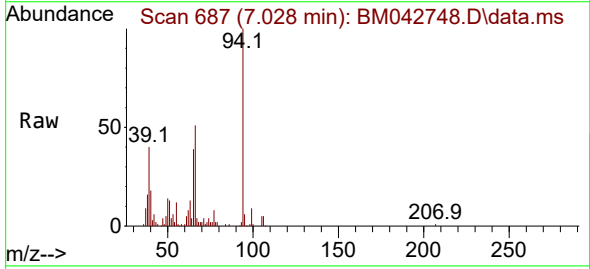


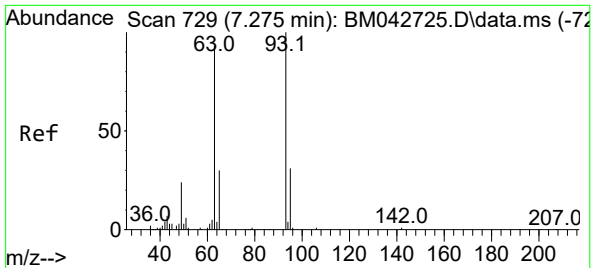
Tgt Ion: 77 Resp: 56191
 Ion Ratio Lower Upper
 77 100
 105 80.6 69.6 104.4
 106 78.7 64.2 96.2



#8
 Phenol
 Concen: 61.507 ng/ul
 RT: 7.028 min Scan# 687
 Delta R.T. -0.006 min
 Lab File: BM042748.D
 Acq: 14 Nov 2023 23:47

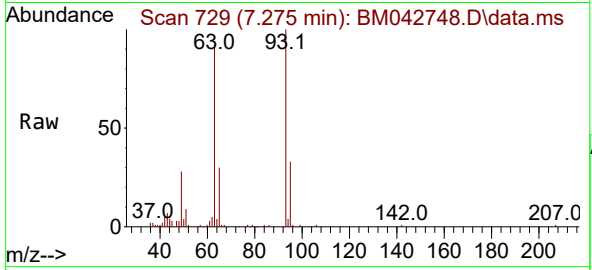
Tgt Ion: 94 Resp: 106756
 Ion Ratio Lower Upper
 94 100
 65 38.7 30.3 45.5
 66 51.0 39.9 59.9





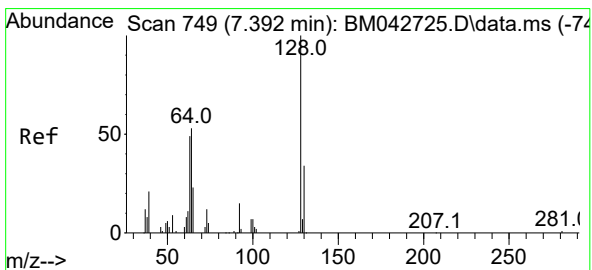
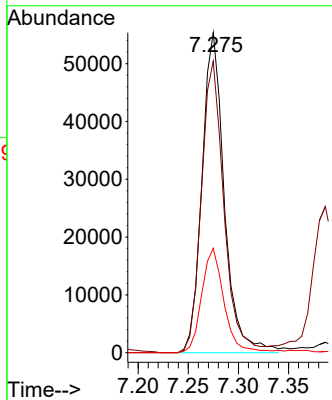
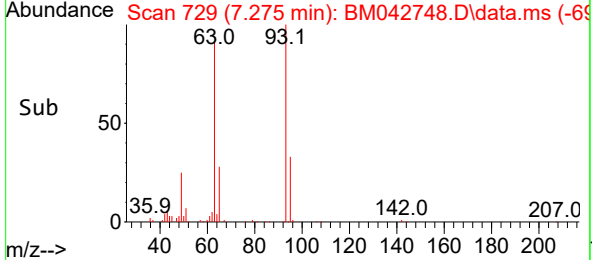
#10
 Bis(2-Chloroethyl)ether
 Concen: 59.932 ng/ul
 RT: 7.275 min Scan# 71
 Delta R.T. -0.006 min
 Lab File: BM042748.D
 Acq: 14 Nov 2023 23:47

Instrument :
 BNA_M
 ClientSampleId :

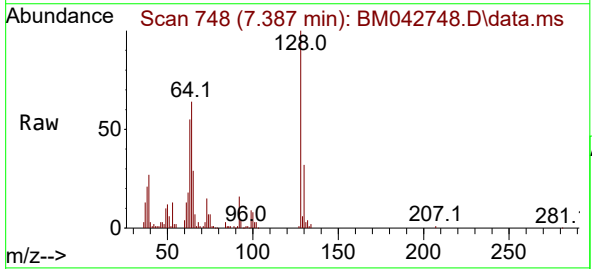


Tgt Ion: 93 Resp: 85926

Ion	Ratio	Lower	Upper
93	100		
63	91.1	68.6	102.8
95	32.6	24.8	37.2

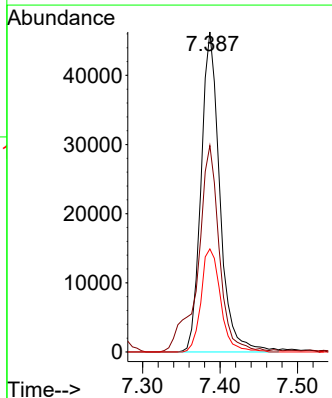
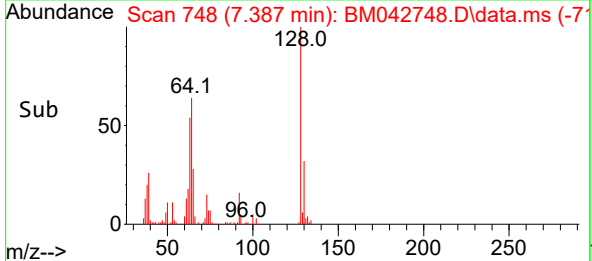


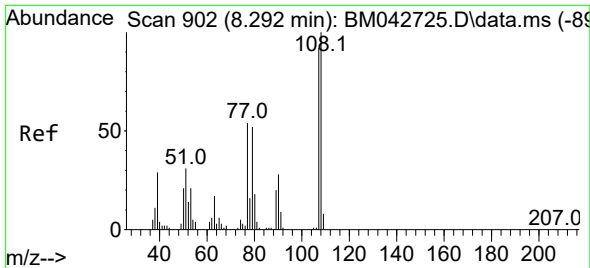
#12
 2-Chlorophenol
 Concen: 58.231 ng/ul
 RT: 7.387 min Scan# 748
 Delta R.T. -0.012 min
 Lab File: BM042748.D
 Acq: 14 Nov 2023 23:47



Tgt Ion: 128 Resp: 78027

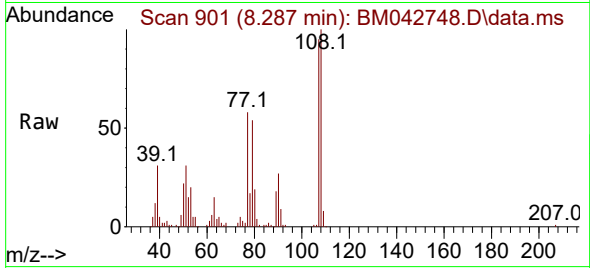
Ion	Ratio	Lower	Upper
128	100		
64	64.5	42.9	64.3#
130	32.2	23.9	35.9



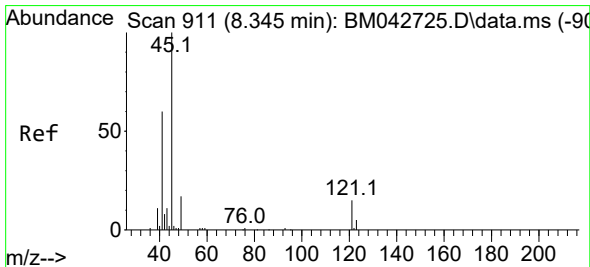
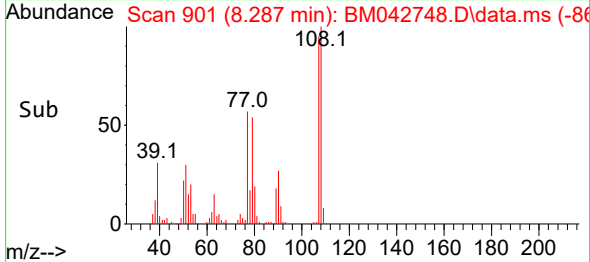
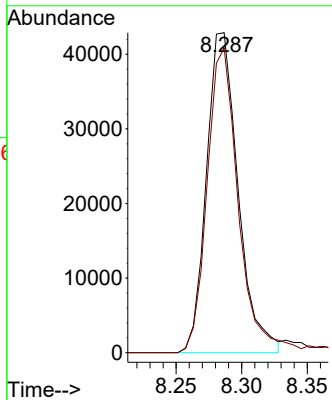


#13
 2-Methylphenol
 Concen: 55.685 ng/ul
 RT: 8.287 min Scan# 901
 Delta R.T. -0.006 min
 Lab File: BM042748.D
 Acq: 14 Nov 2023 23:47

Instrument :
 BNA_M
 ClientSampleId :

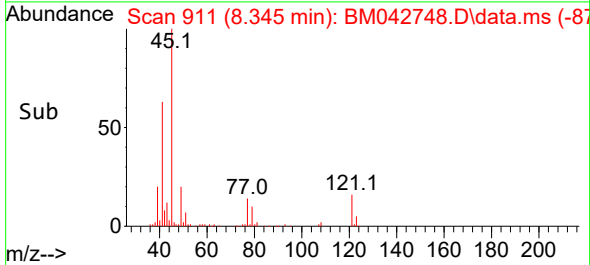
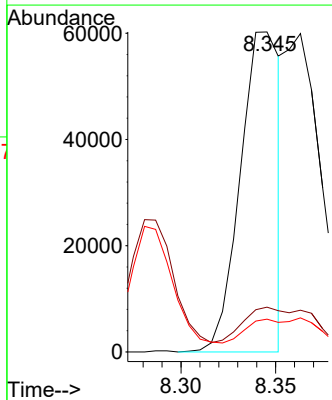
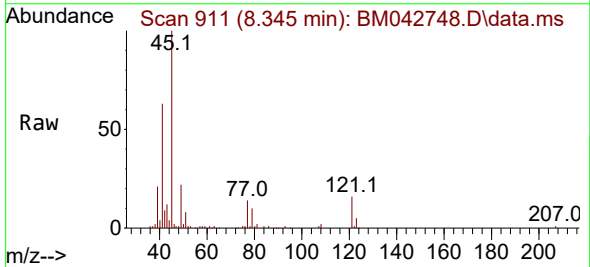


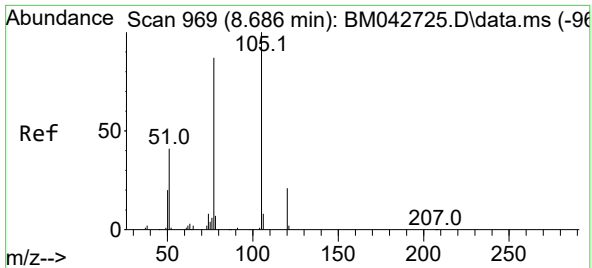
Tgt Ion: 108 Resp: 72074
 Ion Ratio Lower Upper
 108 100
 107 95.2 70.4 105.6



#14
 2,2'-oxybis(1-Chloropropane)
 Concen: 33.723 ng/ul
 RT: 8.345 min Scan# 911
 Delta R.T. -0.006 min
 Lab File: BM042748.D
 Acq: 14 Nov 2023 23:47

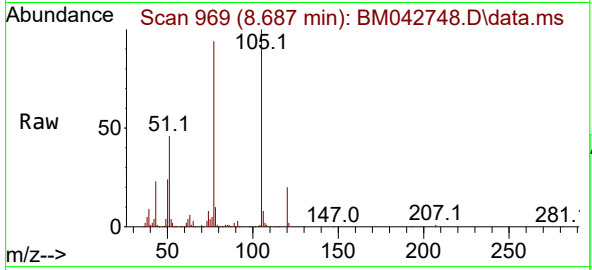
Tgt Ion: 45 Resp: 88015
 Ion Ratio Lower Upper
 45 100
 77 14.0 12.2 18.2
 79 10.3 8.2 12.2





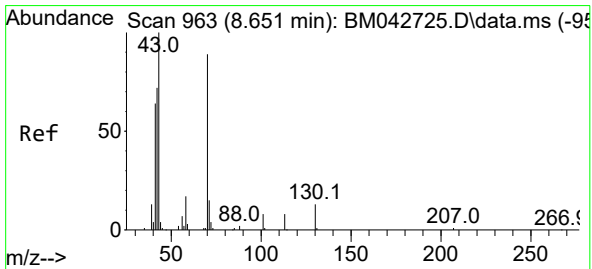
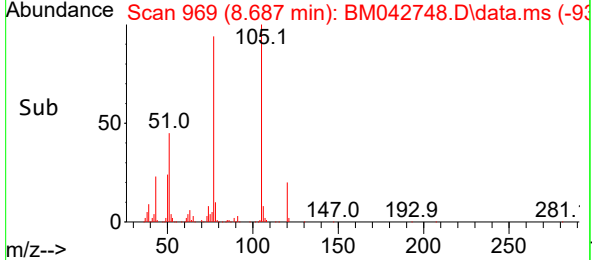
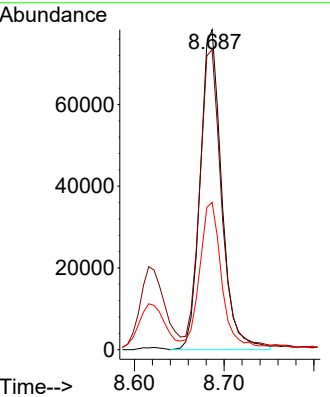
#16
 Acetophenone
 Concen: 56.252 ng/ul
 RT: 8.687 min Scan# 969
 Delta R.T. -0.006 min
 Lab File: BM042748.D
 Acq: 14 Nov 2023 23:47

Instrument :
 BNA_M
 ClientSampleId :

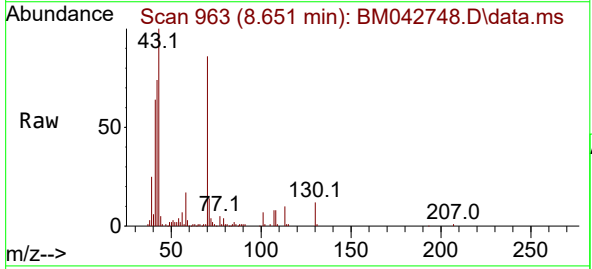


Tgt Ion:105 Resp: 129956

Ion	Ratio	Lower	Upper
105	100		
77	93.8	71.6	107.4
51	46.1	35.4	53.2

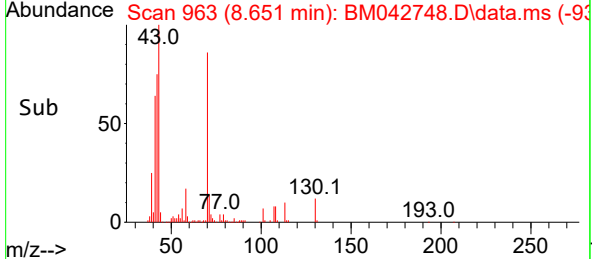
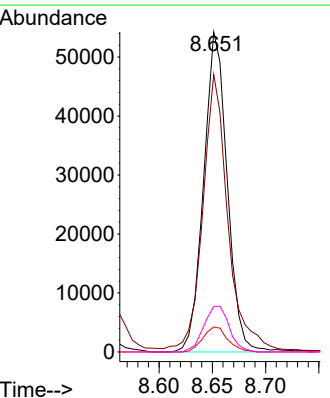


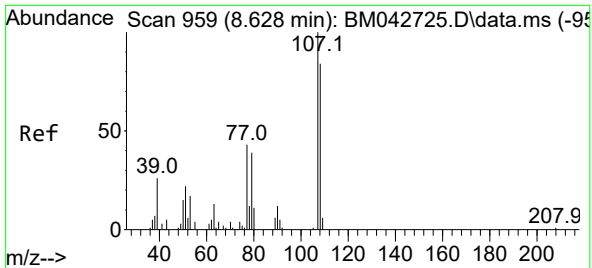
#17
 N-Nitroso-di-n-propylamine
 Concen: 59.317 ng/ul
 RT: 8.651 min Scan# 963
 Delta R.T. -0.006 min
 Lab File: BM042748.D
 Acq: 14 Nov 2023 23:47



Tgt Ion: 70 Resp: 83420

Ion	Ratio	Lower	Upper
70	100		
42	86.8	63.0	94.6
101	7.8	7.0	10.4
130	14.2	11.8	17.8

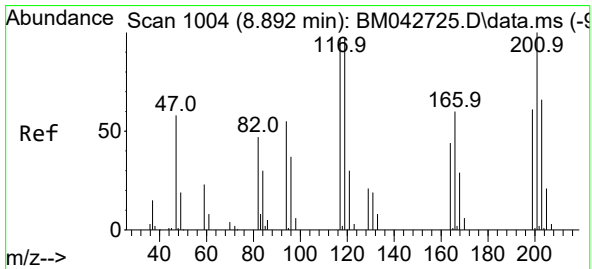
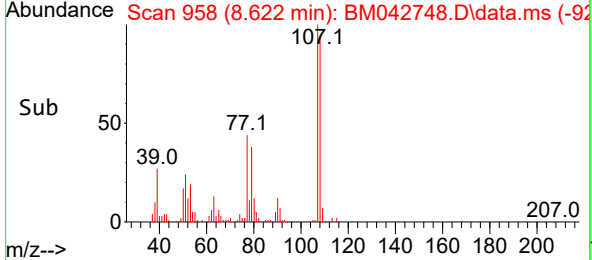
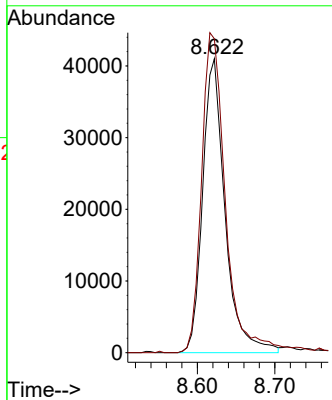
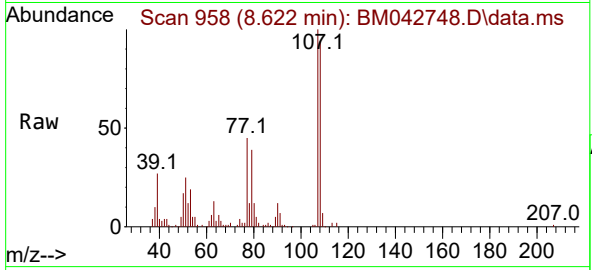




#18
 4-Methylphenol
 Concen: 58.678 ng/ul
 RT: 8.622 min Scan# 91
 Delta R.T. -0.006 min
 Lab File: BM042748.D
 Acq: 14 Nov 2023 23:47

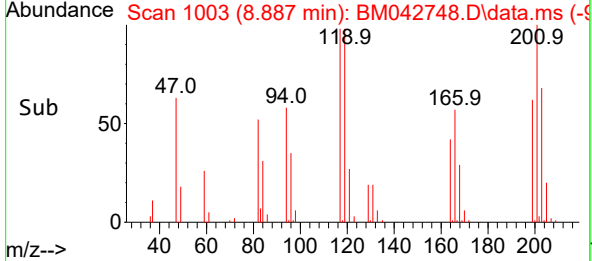
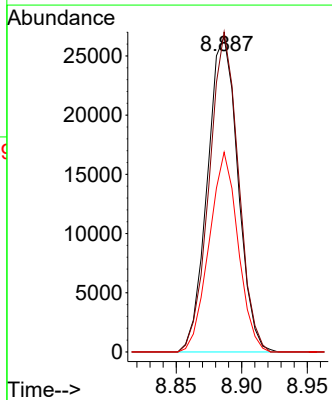
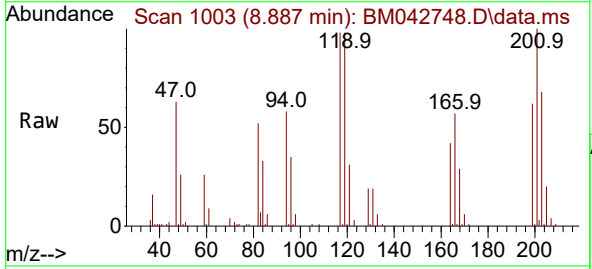
Instrument : BNA_M
 ClientSampleId :

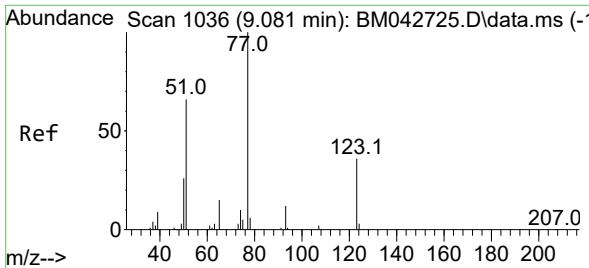
Tgt Ion:108 Resp: 82572
 Ion Ratio Lower Upper
 108 100
 107 106.8 89.4 134.0



#19
 Hexachloroethane
 Concen: 57.661 ng/ul
 RT: 8.887 min Scan# 1003
 Delta R.T. -0.006 min
 Lab File: BM042748.D
 Acq: 14 Nov 2023 23:47

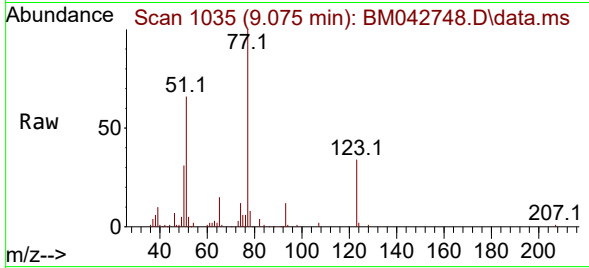
Tgt Ion:117 Resp: 43063
 Ion Ratio Lower Upper
 117 100
 201 101.6 90.0 135.0
 199 63.4 52.2 78.4



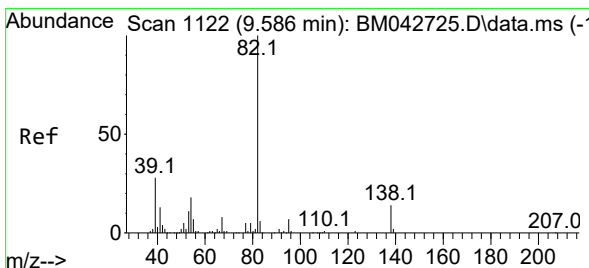
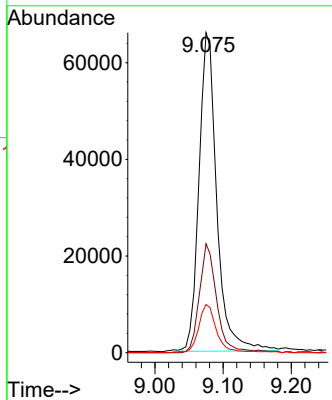
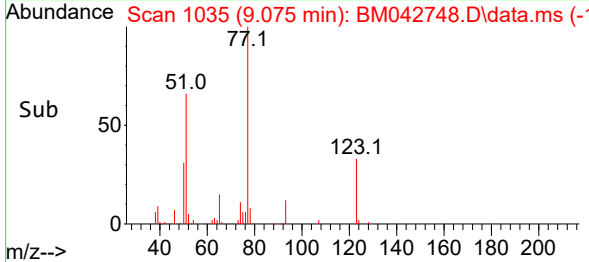


#22
 Nitrobenzene
 Concen: 59.684 ng/uI
 RT: 9.075 min Scan# 1035
 Delta R.T. -0.012 min
 Lab File: BM042748.D
 Acq: 14 Nov 2023 23:47

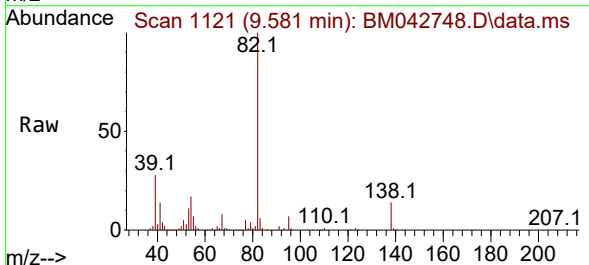
Instrument :
 BNA_M
 ClientSampleId :



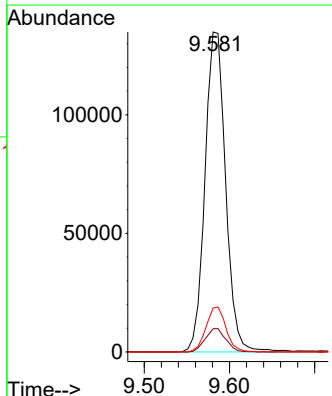
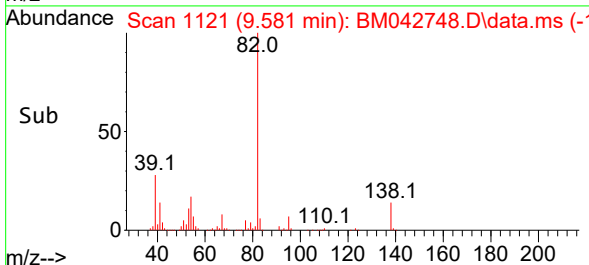
Tgt Ion: 77 Resp: 119944
 Ion Ratio Lower Upper
 77 100
 123 34.1 28.4 42.6
 65 15.1 12.4 18.6

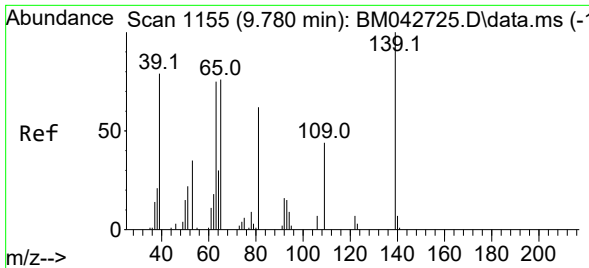


#23
 Isophorone
 Concen: 56.832 ng/uI
 RT: 9.581 min Scan# 1121
 Delta R.T. -0.012 min
 Lab File: BM042748.D
 Acq: 14 Nov 2023 23:47



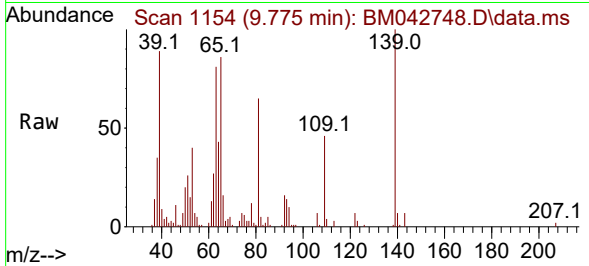
Tgt Ion: 82 Resp: 227472
 Ion Ratio Lower Upper
 82 100
 95 7.2 6.4 9.6
 138 13.7 12.1 18.1





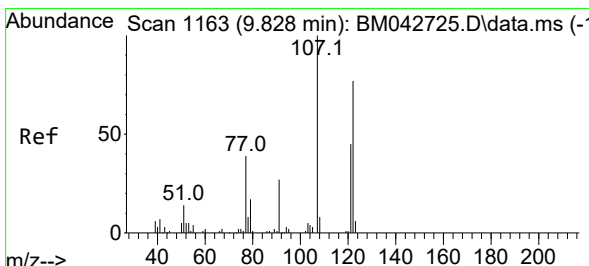
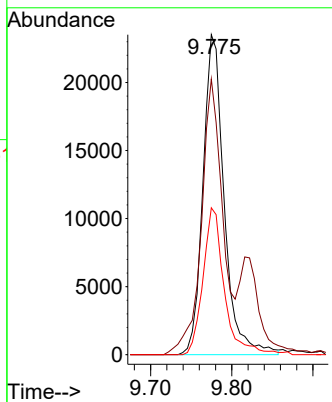
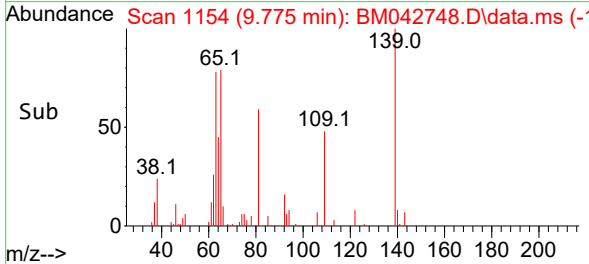
#25
 2-Nitrophenol
 Concen: 53.882 ng/ul
 RT: 9.775 min Scan# 1154
 Delta R.T. -0.012 min
 Lab File: BM042748.D
 Acq: 14 Nov 2023 23:47

Instrument :
 BNA_M
 ClientSampleId :

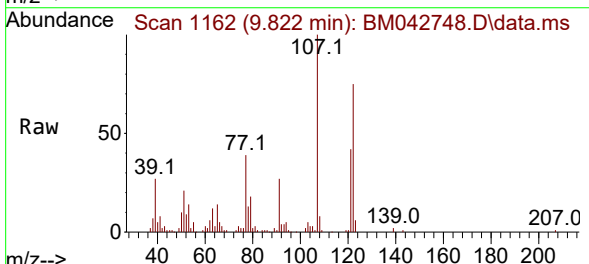


Tgt Ion:139 Resp: 42582

Ion	Ratio	Lower	Upper
139	100		
65	86.2	59.1	88.7
109	45.9	33.9	50.9

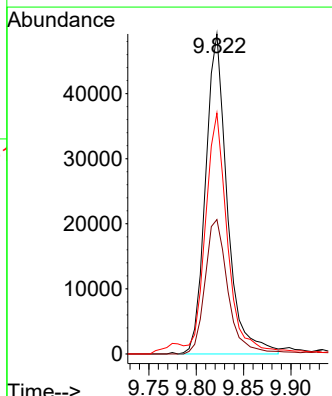
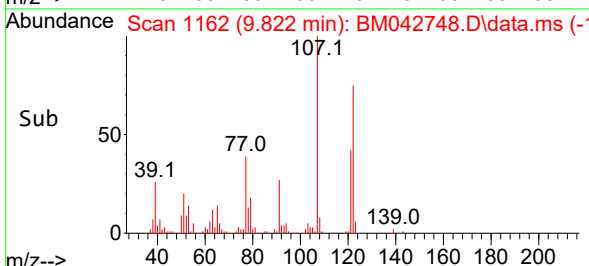


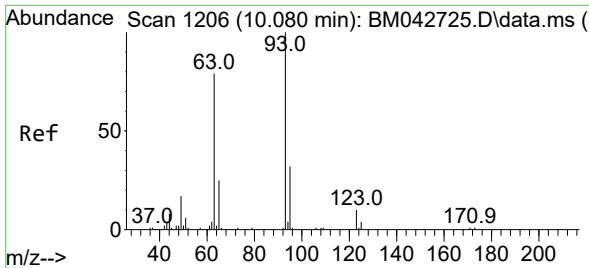
#26
 2,4-Dimethylphenol
 Concen: 46.334 ng/ul
 RT: 9.822 min Scan# 1162
 Delta R.T. -0.006 min
 Lab File: BM042748.D
 Acq: 14 Nov 2023 23:47



Tgt Ion:107 Resp: 78345

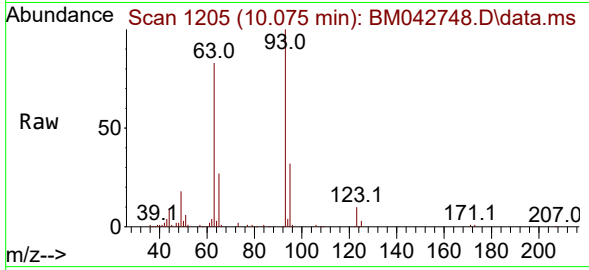
Ion	Ratio	Lower	Upper
107	100		
121	42.0	38.0	57.0
122	75.2	60.5	90.7





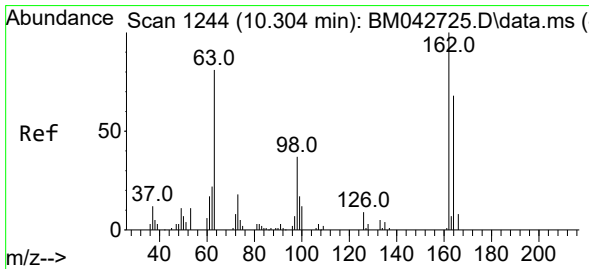
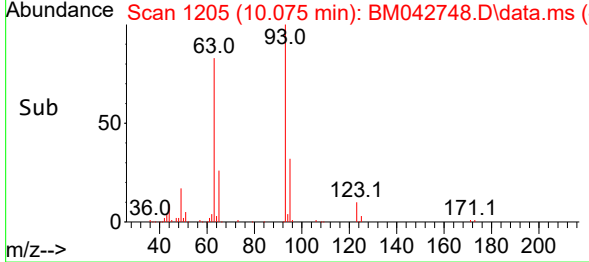
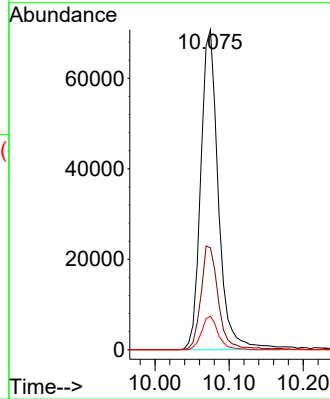
#27
 Bis(2-Chloroethoxy)methane
 Concen: 57.750 ng/ul
 RT: 10.075 min Scan# 11
 Delta R.T. -0.006 min
 Lab File: BM042748.D
 Acq: 14 Nov 2023 23:47

Instrument :
 BNA_M
 ClientSampleId :



Tgt Ion: 93 Resp: 116804

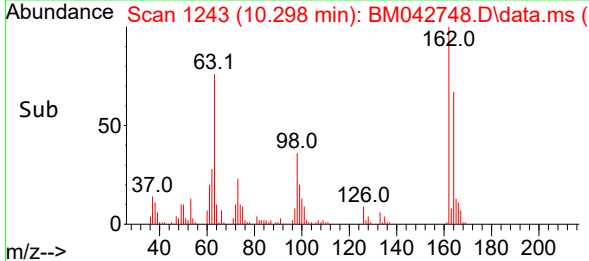
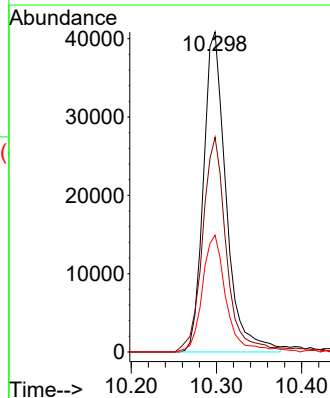
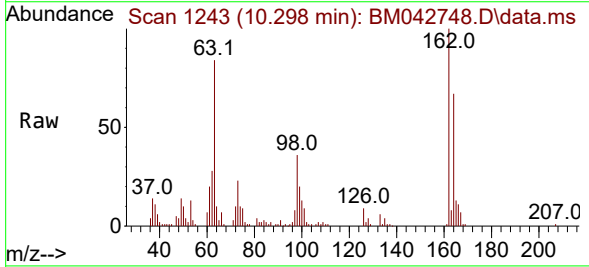
Ion	Ratio	Lower	Upper
93	100		
95	31.8	26.5	39.7
123	10.5	8.2	12.2

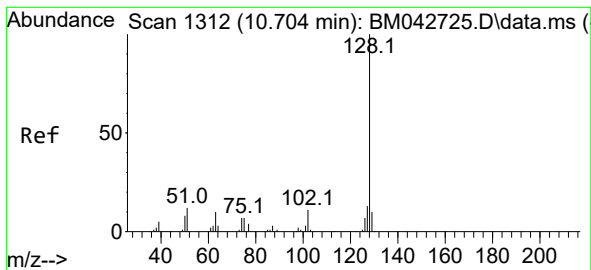


#29
 2,4-Dichlorophenol
 Concen: 55.237 ng/ul
 RT: 10.298 min Scan# 1243
 Delta R.T. -0.006 min
 Lab File: BM042748.D
 Acq: 14 Nov 2023 23:47

Tgt Ion: 162 Resp: 75638

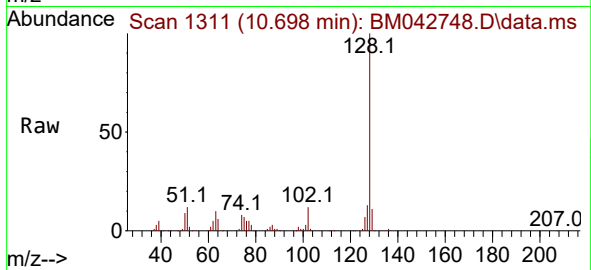
Ion	Ratio	Lower	Upper
162	100		
164	67.1	53.4	80.2
98	36.5	28.4	42.6



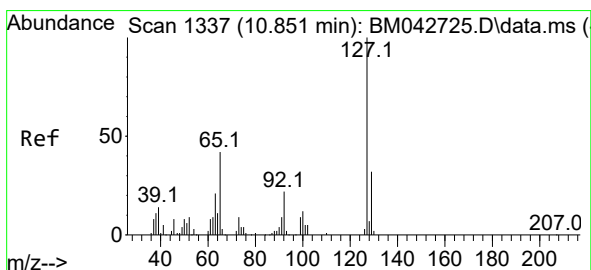
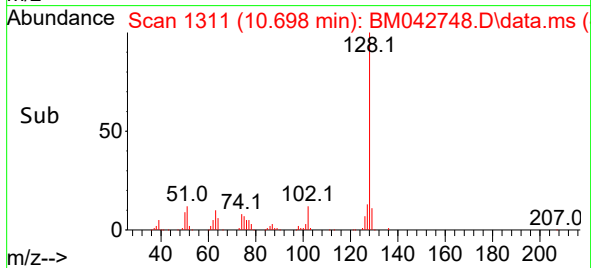
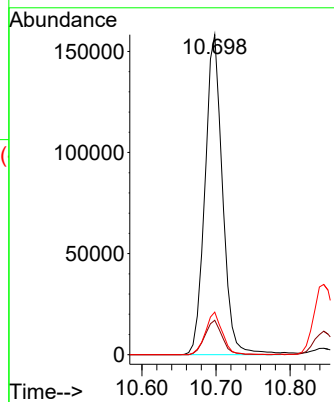


#30
 Naphthalene
 Concen: 54.793 ng/uI
 RT: 10.698 min Scan# 111
 Delta R.T. -0.006 min
 Lab File: BM042748.D
 Acq: 14 Nov 2023 23:47

Instrument :
 BNA_M
 ClientSampleId :

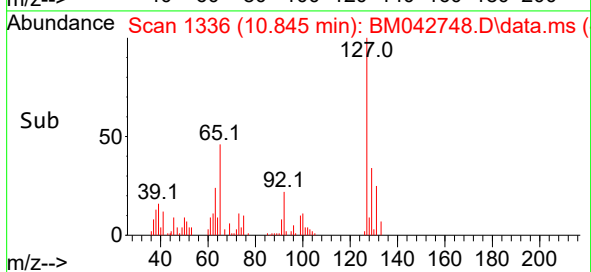
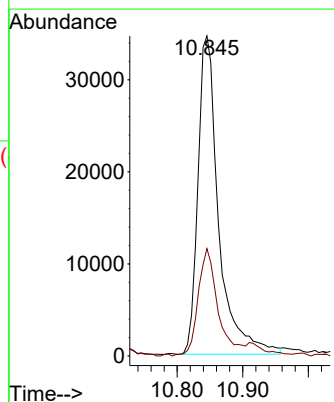
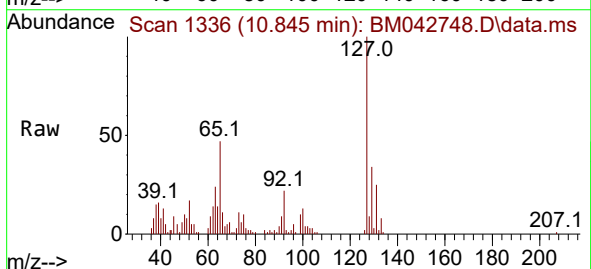


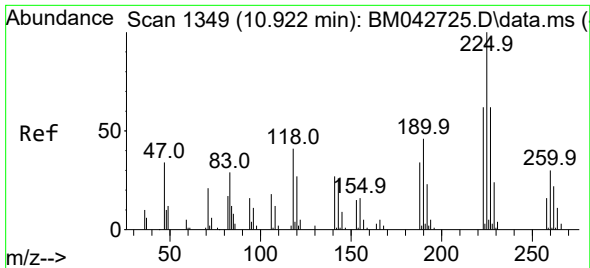
Tgt Ion:128 Resp: 260331
 Ion Ratio Lower Upper
 128 100
 129 10.7 8.6 13.0
 127 13.3 10.5 15.7



#32
 4-Chloroaniline
 Concen: 43.171 ng/uI
 RT: 10.845 min Scan# 1336
 Delta R.T. -0.006 min
 Lab File: BM042748.D
 Acq: 14 Nov 2023 23:47

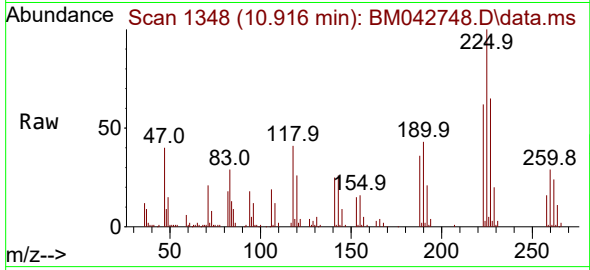
Tgt Ion:127 Resp: 76057
 Ion Ratio Lower Upper
 127 100
 129 33.5 26.7 40.1



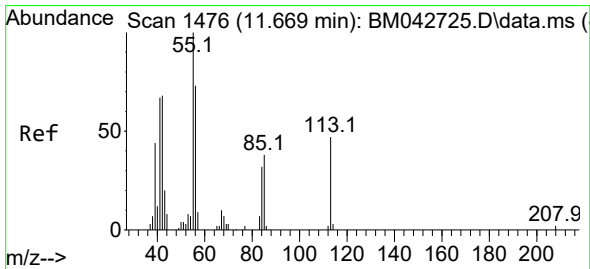
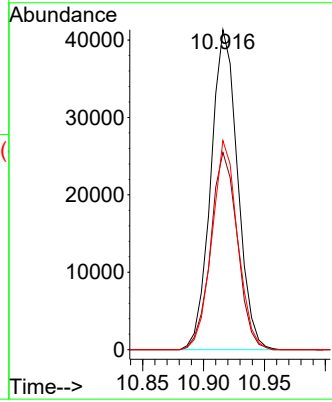
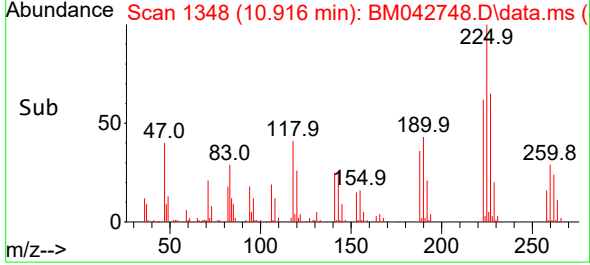


#33
 Hexachlorobutadiene
 Concen: 52.168 ng/uI
 RT: 10.916 min Scan# 1348
 Delta R.T. -0.012 min
 Lab File: BM042748.D
 Acq: 14 Nov 2023 23:47

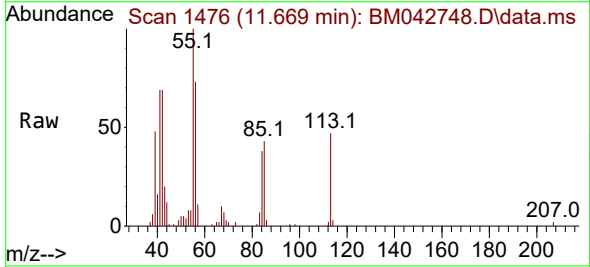
Instrument :
 BNA_M
 ClientSampleId :



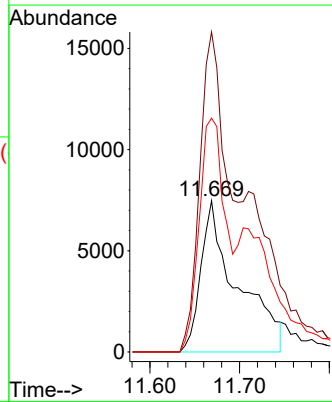
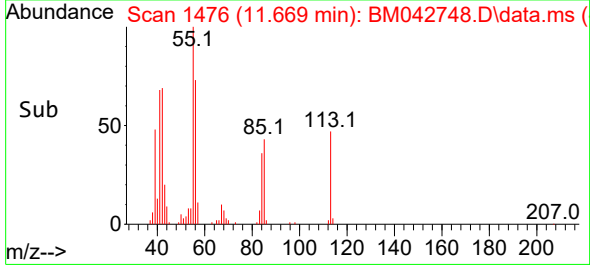
Tgt Ion:225 Resp: 63102
 Ion Ratio Lower Upper
 225 100
 223 61.6 53.0 79.4
 227 65.4 50.5 75.7

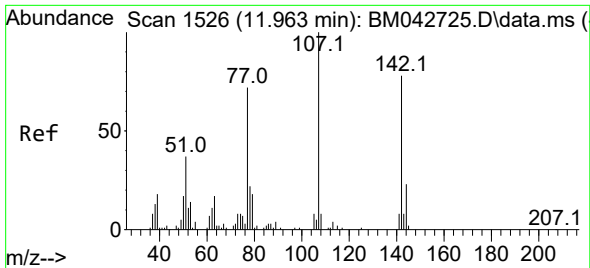


#34
 Caprolactam
 Concen: 52.023 ng/uI
 RT: 11.669 min Scan# 1476
 Delta R.T. -0.029 min
 Lab File: BM042748.D
 Acq: 14 Nov 2023 23:47



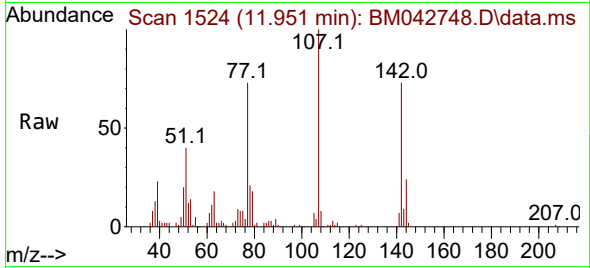
Tgt Ion:113 Resp: 21122
 Ion Ratio Lower Upper
 113 100
 55 211.7 184.2 276.2
 56 154.6 134.3 201.5





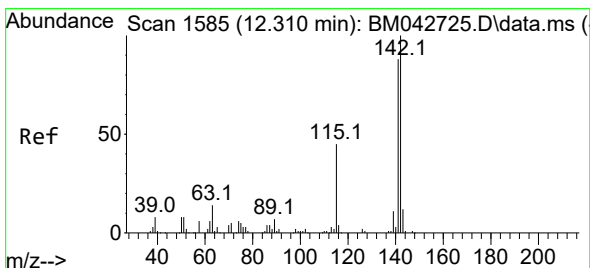
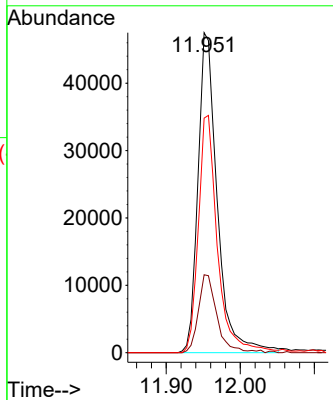
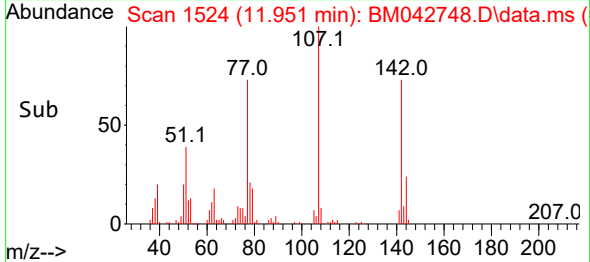
#35
 4-Chloro-3-methylphenol
 Concen: 58.589 ng/ul
 RT: 11.951 min Scan# 11
 Delta R.T. -0.006 min
 Lab File: BM042748.D
 Acq: 14 Nov 2023 23:47

Instrument :
 BNA_M
 ClientSampleId :

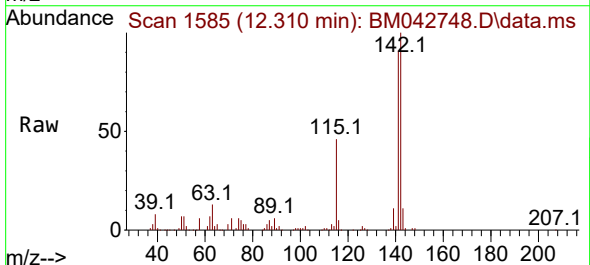


Tgt Ion:107 Resp: 85967

Ion	Ratio	Lower	Upper
107	100		
144	24.3	18.3	27.5
142	73.3	56.3	84.5

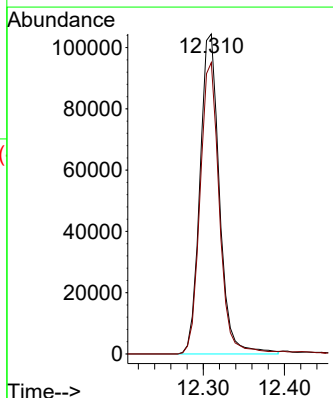
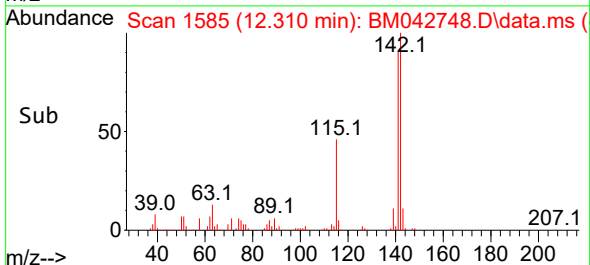


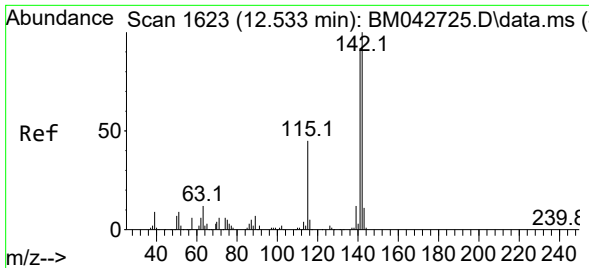
#36
 2-Methylnaphthalene
 Concen: 54.711 ng/ul
 RT: 12.310 min Scan# 1585
 Delta R.T. -0.006 min
 Lab File: BM042748.D
 Acq: 14 Nov 2023 23:47



Tgt Ion:142 Resp: 174220

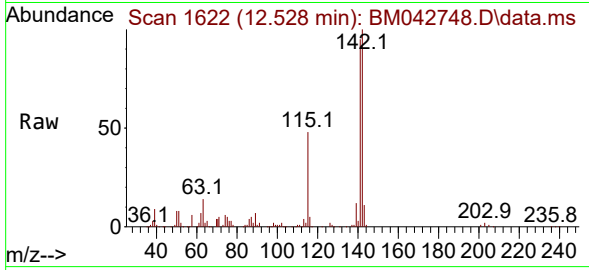
Ion	Ratio	Lower	Upper
142	100		
141	91.0	73.6	110.4





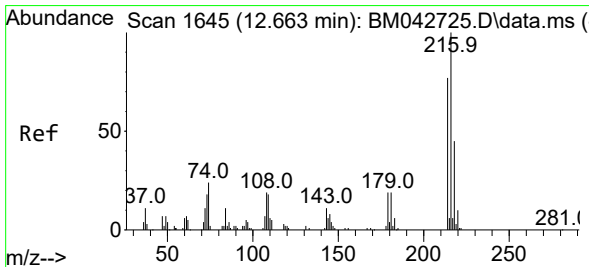
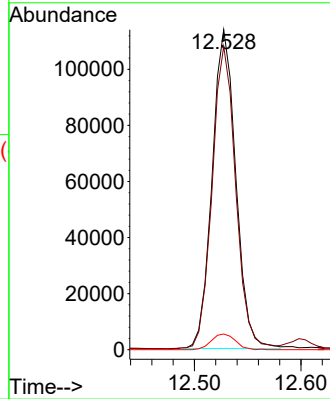
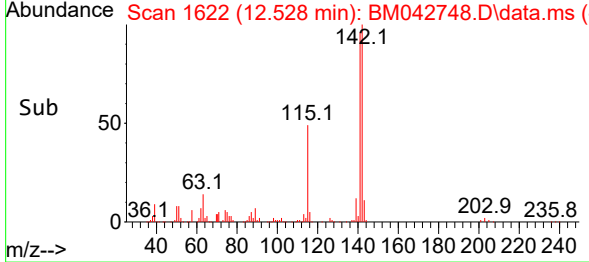
#37
 1-Methylnaphthalene
 Concen: 52.436 ng/uI
 RT: 12.528 min Scan# 1622
 Delta R.T. -0.006 min
 Lab File: BM042748.D
 Acq: 14 Nov 2023 23:47

Instrument :
 BNA_M
 ClientSampleId :

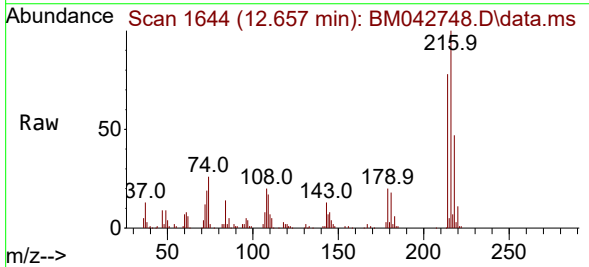


Tgt Ion:142 Resp: 175556

Ion	Ratio	Lower	Upper
142	100		
141	94.8	73.3	109.9
116	4.9	3.9	5.9

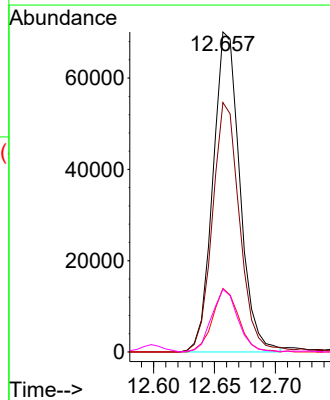
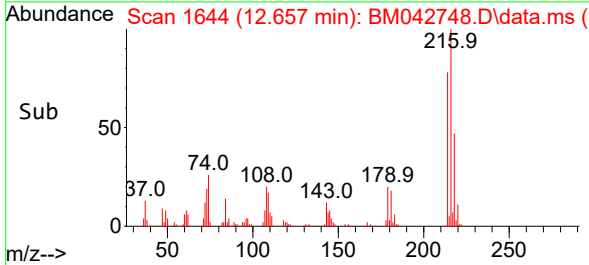


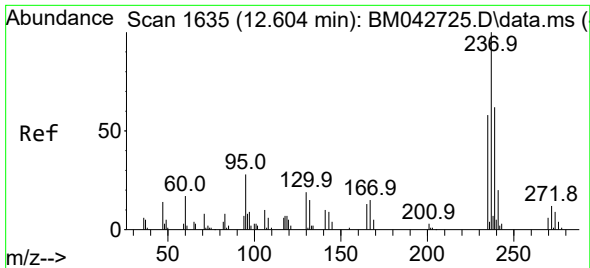
#39
 1,2,4,5-Tetrachlorobenzene
 Concen: 54.448 ng/uI
 RT: 12.657 min Scan# 1644
 Delta R.T. -0.012 min
 Lab File: BM042748.D
 Acq: 14 Nov 2023 23:47



Tgt Ion:216 Resp: 107907

Ion	Ratio	Lower	Upper
216	100		
214	78.0	64.1	96.1
179	19.8	15.5	23.3
108	19.6	15.1	22.7



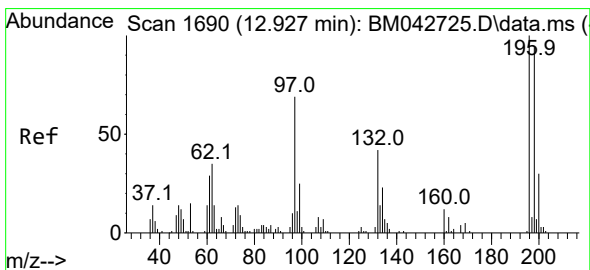
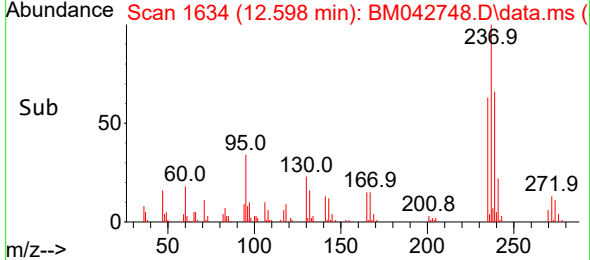
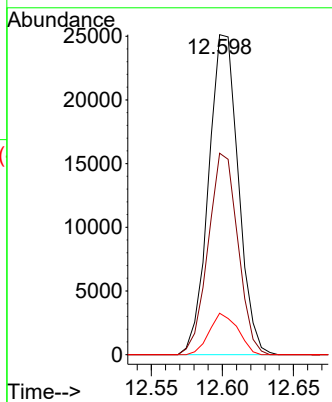
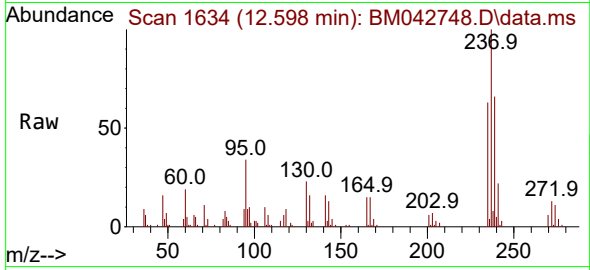


#40
 Hexachlorocyclopentadiene
 Concen: 39.058 ng/ul
 RT: 12.598 min Scan# 1634
 Delta R.T. -0.012 min
 Lab File: BM042748.D
 Acq: 14 Nov 2023 23:47

Instrument : BNA_M
 ClientSampleId :

Tgt Ion:237 Resp: 36647

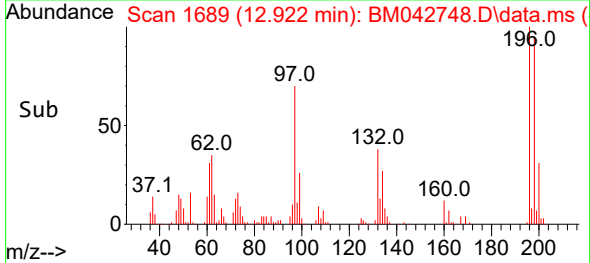
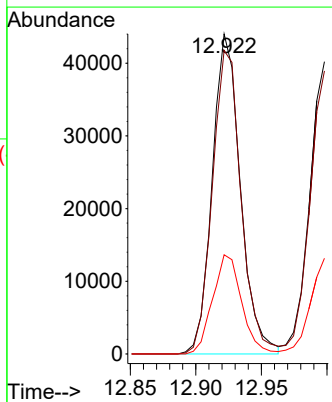
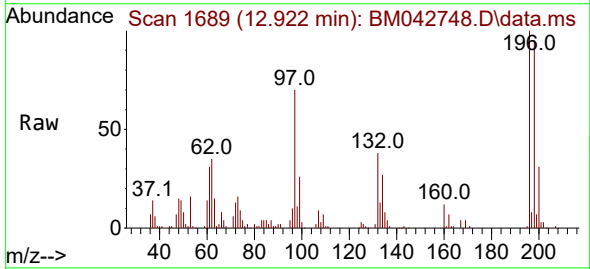
Ion	Ratio	Lower	Upper
237	100		
235	62.9	53.3	79.9
272	12.9	10.7	16.1

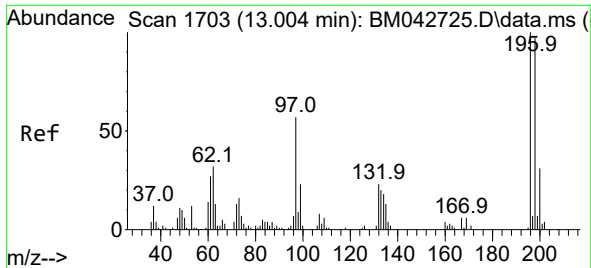


#41
 2,4,6-Trichlorophenol
 Concen: 54.288 ng/ul
 RT: 12.922 min Scan# 1689
 Delta R.T. -0.006 min
 Lab File: BM042748.D
 Acq: 14 Nov 2023 23:47

Tgt Ion:196 Resp: 65718

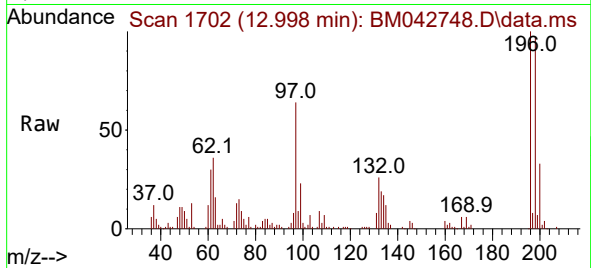
Ion	Ratio	Lower	Upper
196	100		
198	94.9	81.0	121.4
200	31.0	24.1	36.1



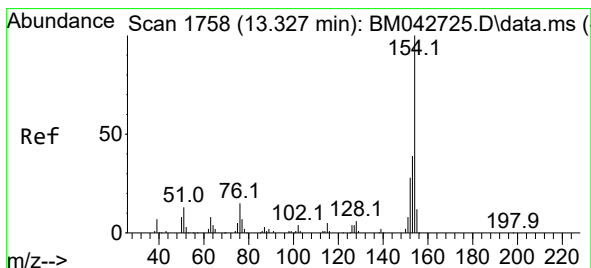
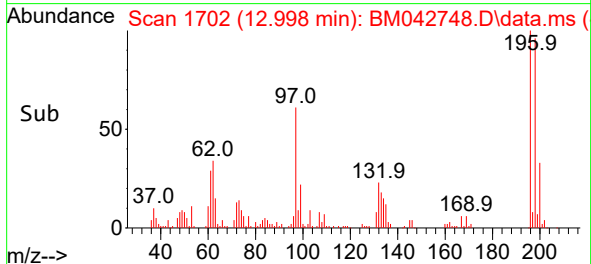
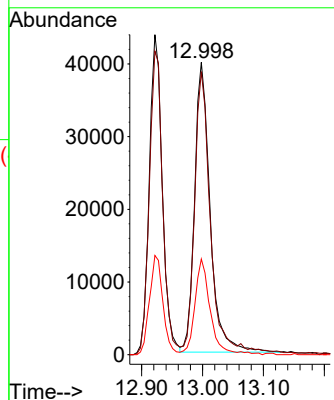


#42
 2,4,5-Trichlorophenol
 Concen: 60.766 ng/ul
 RT: 12.998 min Scan# 1702
 Delta R.T. -0.006 min
 Lab File: BM042748.D
 Acq: 14 Nov 2023 23:47

Instrument :
 BNA_M
 ClientSampleId :

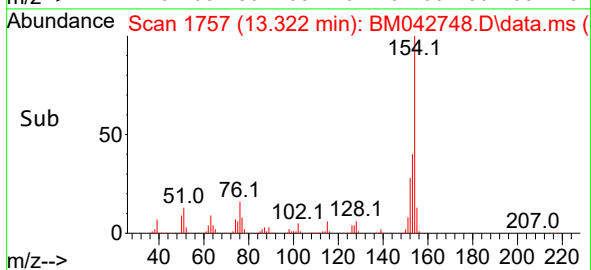
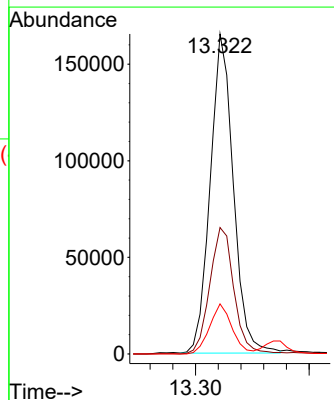
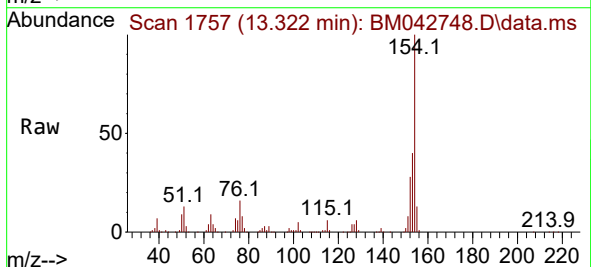


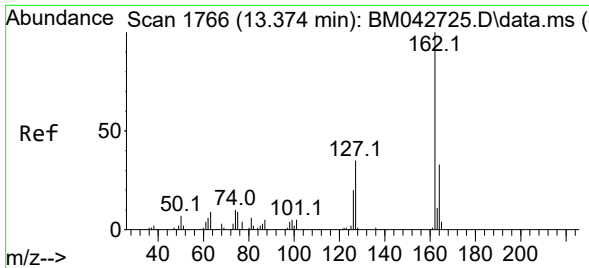
Tgt Ion:196 Resp: 71030
 Ion Ratio Lower Upper
 196 100
 198 96.8 77.4 116.0
 200 32.7 26.2 39.4



#43
 1,1'-Biphenyl
 Concen: 55.456 ng/ul
 RT: 13.322 min Scan# 1757
 Delta R.T. -0.012 min
 Lab File: BM042748.D
 Acq: 14 Nov 2023 23:47

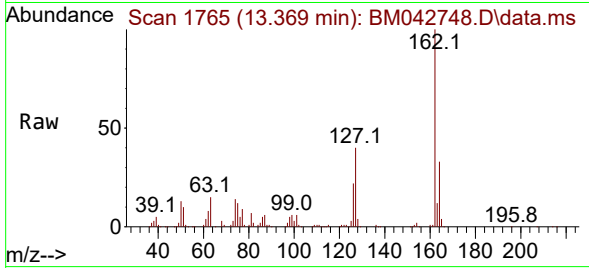
Tgt Ion:154 Resp: 233705
 Ion Ratio Lower Upper
 154 100
 153 39.5 32.4 48.6
 76 15.6 10.7 16.1



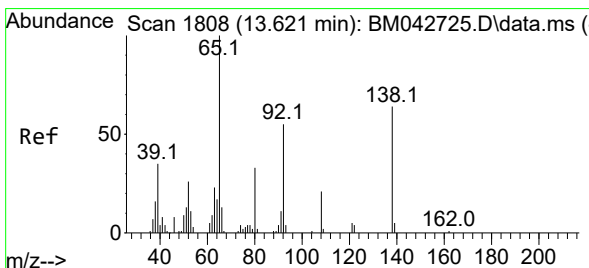
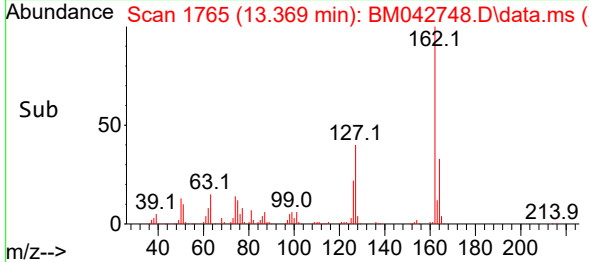
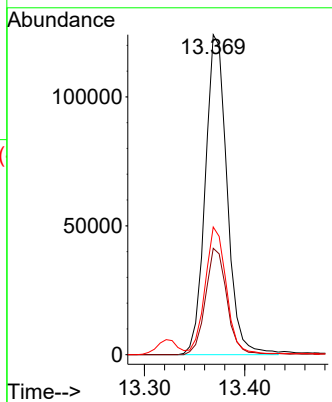


#44
 2-Chloronaphthalene
 Concen: 55.517 ng/uI
 RT: 13.369 min Scan# 1765
 Delta R.T. -0.012 min
 Lab File: BM042748.D
 Acq: 14 Nov 2023 23:47

Instrument :
 BNA_M
 ClientSampleId :

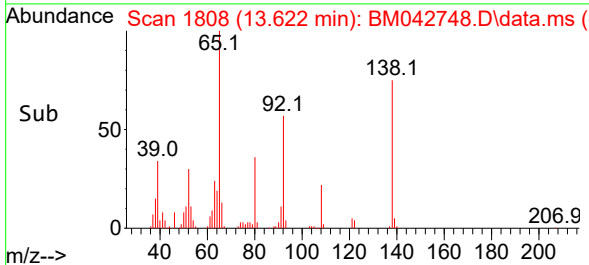
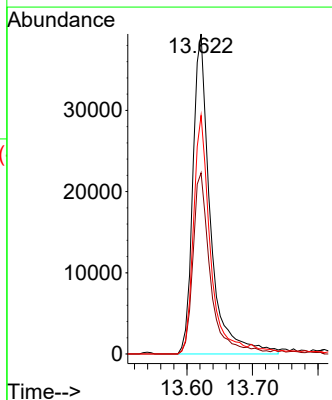
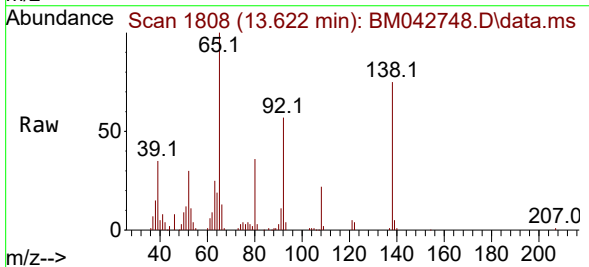


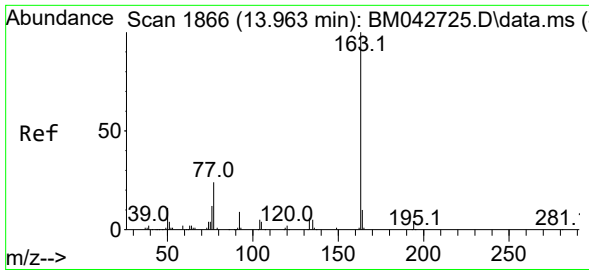
Tgt Ion:162 Resp: 188217
 Ion Ratio Lower Upper
 162 100
 164 33.3 24.2 36.2
 127 39.9 30.8 46.2



#45
 2-Nitroaniline
 Concen: 66.199 ng/uI
 RT: 13.622 min Scan# 1808
 Delta R.T. -0.006 min
 Lab File: BM042748.D
 Acq: 14 Nov 2023 23:47

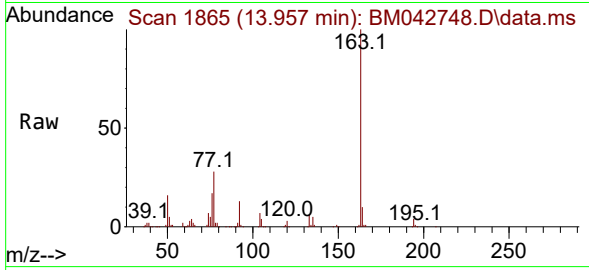
Tgt Ion: 65 Resp: 73194
 Ion Ratio Lower Upper
 65 100
 92 56.6 49.1 73.7
 138 74.6 61.8 92.8



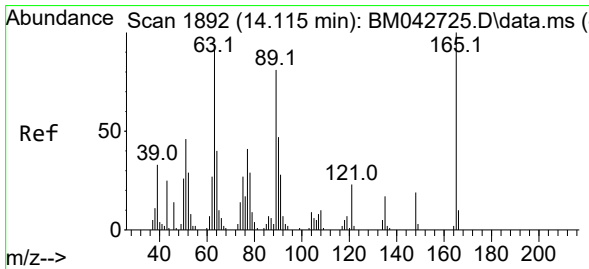
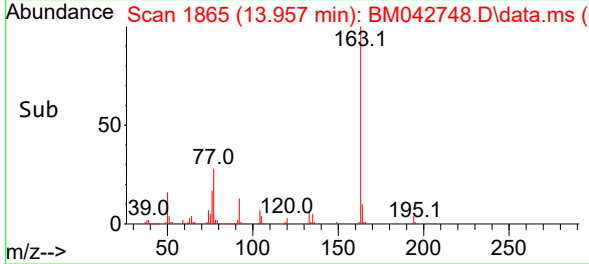
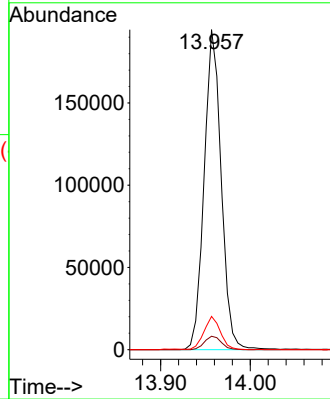


#47
 Dimethylphthalate
 Concen: 55.139 ng/ul
 RT: 13.957 min Scan# 1865
 Delta R.T. -0.006 min
 Lab File: BM042748.D
 Acq: 14 Nov 2023 23:47

Instrument :
 BNA_M
 ClientSampleId :

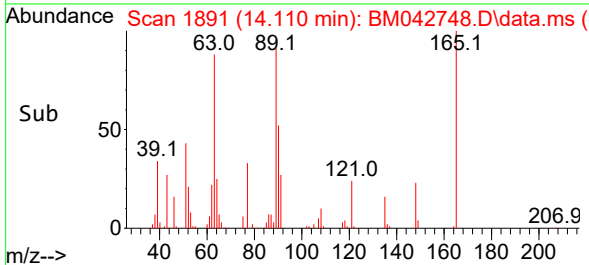
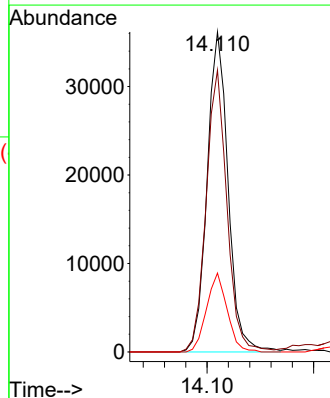
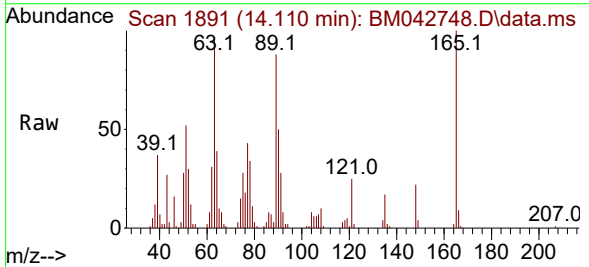


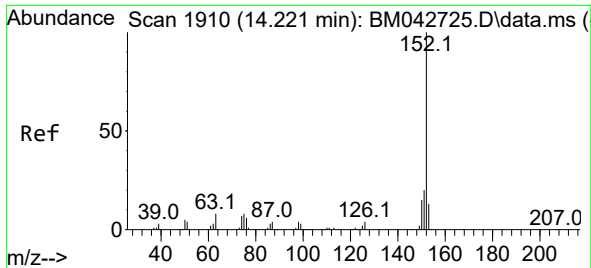
Tgt Ion:163 Resp: 256849
 Ion Ratio Lower Upper
 163 100
 194 4.2 3.2 4.8
 164 10.4 7.9 11.9



#48
 2,6-Dinitrotoluene
 Concen: 56.623 ng/ul
 RT: 14.110 min Scan# 1891
 Delta R.T. -0.006 min
 Lab File: BM042748.D
 Acq: 14 Nov 2023 23:47

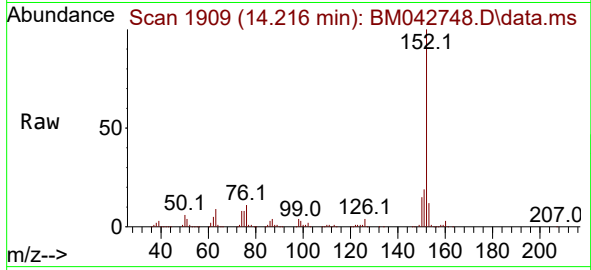
Tgt Ion:165 Resp: 49553
 Ion Ratio Lower Upper
 165 100
 89 88.1 64.1 96.1
 121 24.7 18.4 27.6



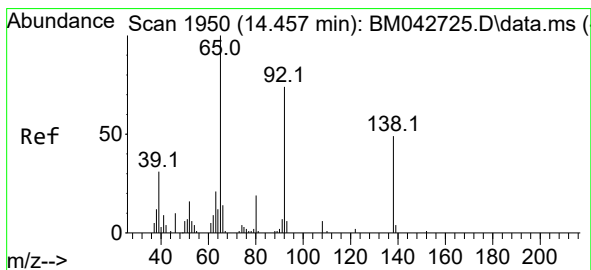
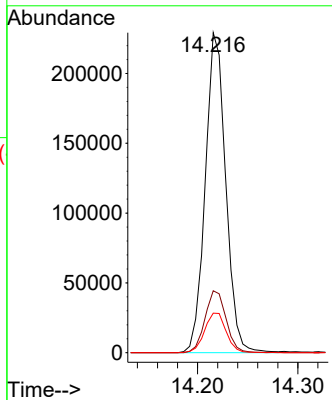
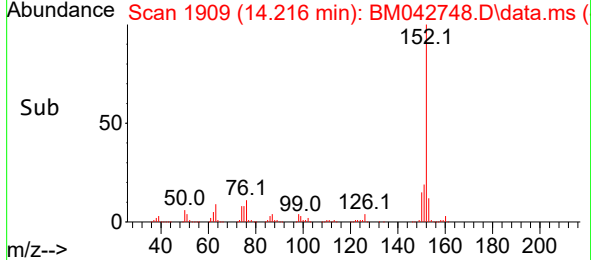


#50
 Acenaphthylene
 Concen: 56.713 ng/uI
 RT: 14.216 min Scan# 1909
 Delta R.T. -0.012 min
 Lab File: BM042748.D
 Acq: 14 Nov 2023 23:47

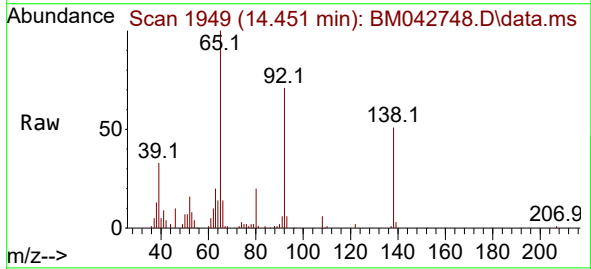
Instrument :
 BNA_M
 ClientSampleId :



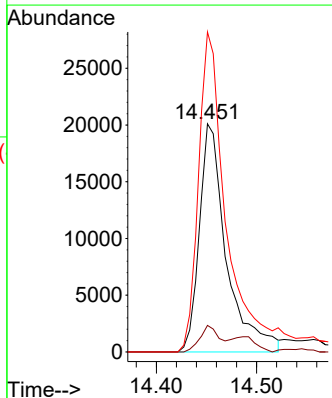
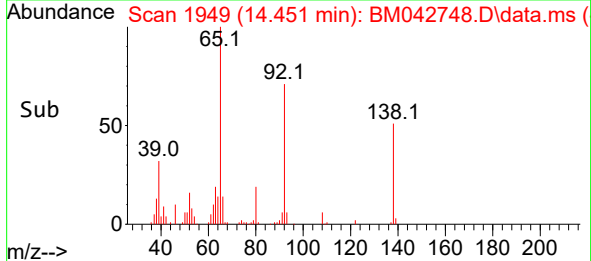
Tgt Ion:152 Resp: 325183
 Ion Ratio Lower Upper
 152 100
 151 19.4 16.0 24.0
 153 12.4 10.5 15.7

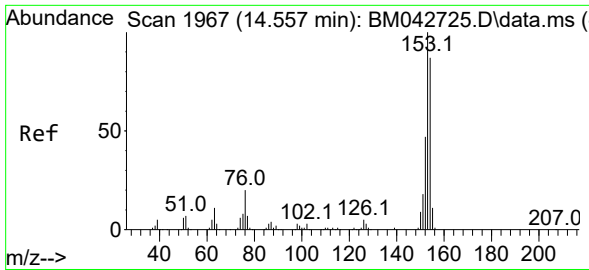


#51
 3-Nitroaniline
 Concen: 52.762 ng/uI
 RT: 14.451 min Scan# 1949
 Delta R.T. -0.006 min
 Lab File: BM042748.D
 Acq: 14 Nov 2023 23:47



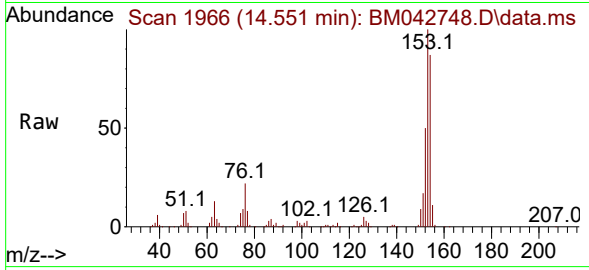
Tgt Ion:138 Resp: 37758
 Ion Ratio Lower Upper
 138 100
 108 11.7 8.7 13.1
 92 140.3 109.4 164.0



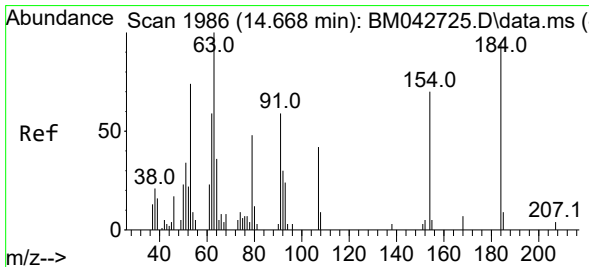
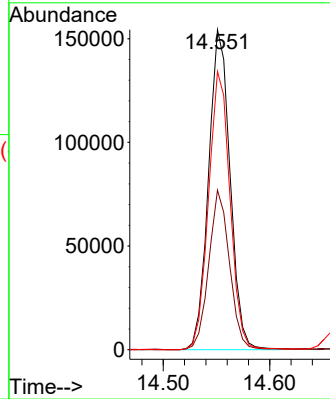
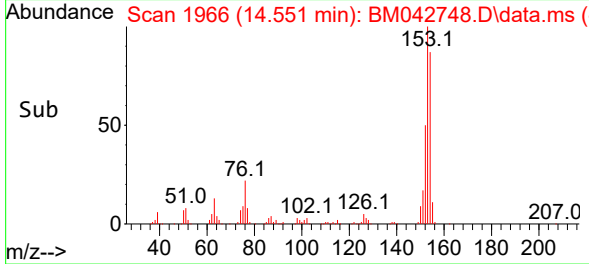


#52
 Acenaphthene
 Concen: 56.020 ng/uI
 RT: 14.551 min Scan# 1966
 Delta R.T. -0.012 min
 Lab File: BM042748.D
 Acq: 14 Nov 2023 23:47

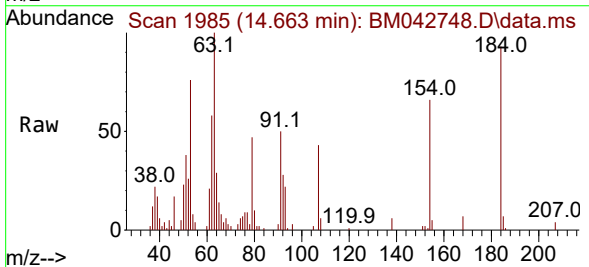
Instrument :
 BNA_M
 ClientSampleId :



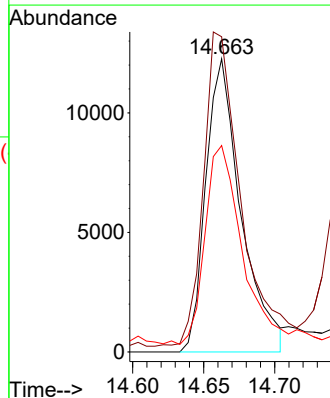
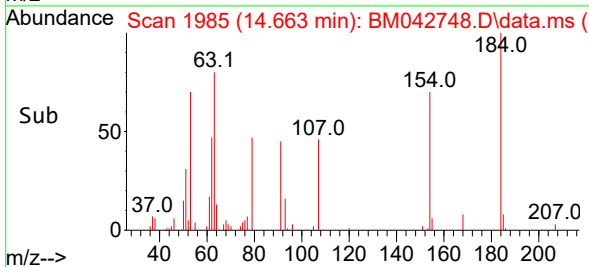
Tgt Ion:153 Resp: 217236
 Ion Ratio Lower Upper
 153 100
 152 49.8 38.2 57.2
 154 86.9 71.3 106.9

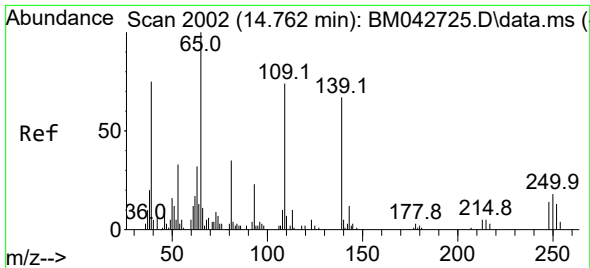


#53
 2,4-Dinitrophenol
 Concen: 48.623 ng/uI
 RT: 14.663 min Scan# 1985
 Delta R.T. -0.006 min
 Lab File: BM042748.D
 Acq: 14 Nov 2023 23:47



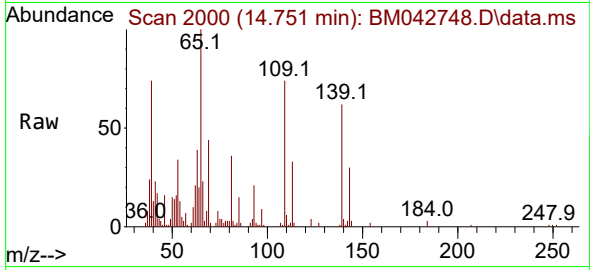
Tgt Ion:184 Resp: 21158
 Ion Ratio Lower Upper
 184 100
 63 107.5 79.1 118.7
 154 70.4 65.7 98.5



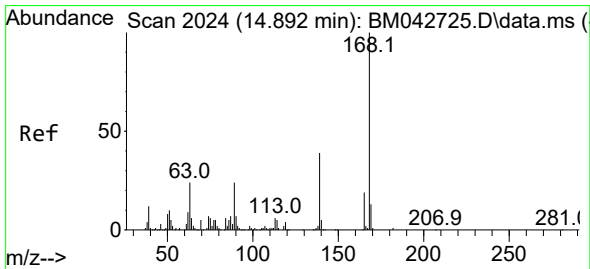
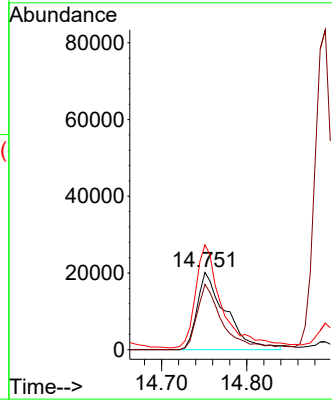
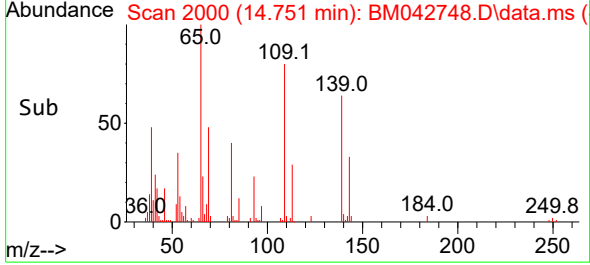


#55
 4-Nitrophenol
 Concen: 55.253 ng/ul
 RT: 14.751 min Scan# 2000
 Delta R.T. -0.006 min
 Lab File: BM042748.D
 Acq: 14 Nov 2023 23:47

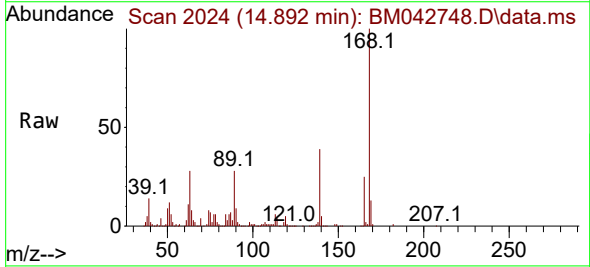
Instrument :
 BNA_M
 ClientSampleId :



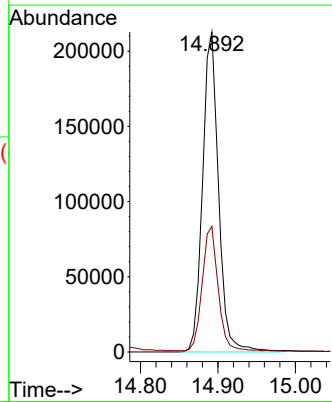
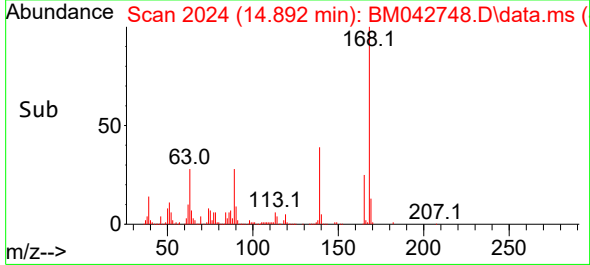
Tgt Ion:109 Resp: 46981
 Ion Ratio Lower Upper
 109 100
 139 84.5 67.1 100.7
 65 135.4 107.1 160.7

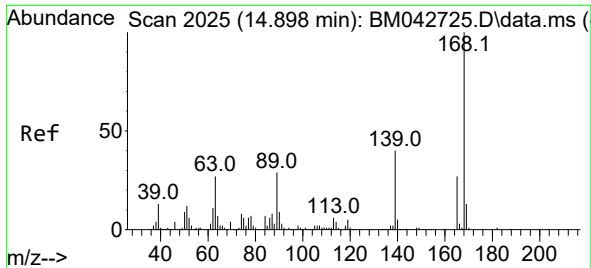


#56
 Dibenzofuran
 Concen: 56.672 ng/ul
 RT: 14.892 min Scan# 2024
 Delta R.T. -0.006 min
 Lab File: BM042748.D
 Acq: 14 Nov 2023 23:47



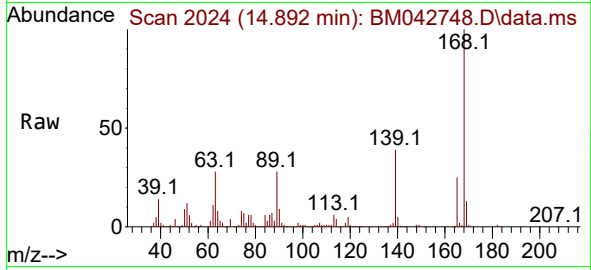
Tgt Ion:168 Resp: 305025
 Ion Ratio Lower Upper
 168 100
 139 39.2 30.8 46.2





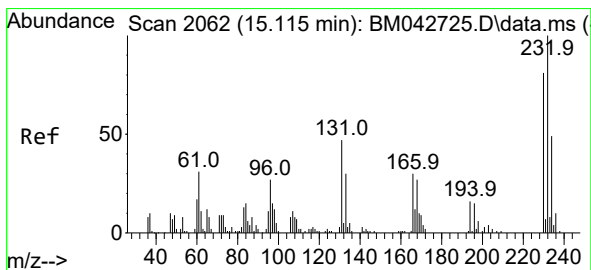
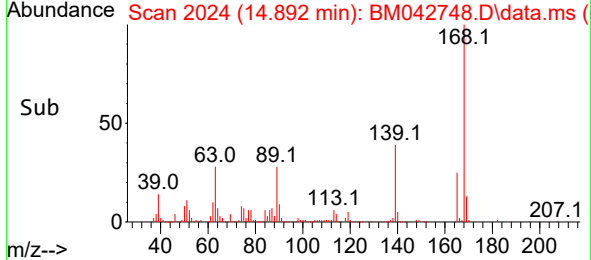
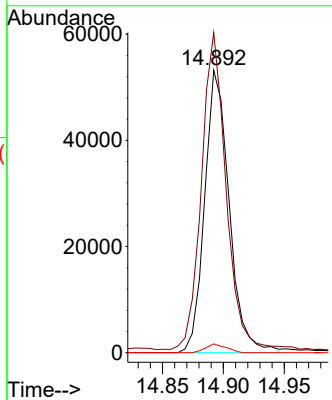
#57
 2,4-Dinitrotoluene
 Concen: 58.114 ng/ul
 RT: 14.892 min Scan# 2061
 Delta R.T. -0.006 min
 Lab File: BM042748.D
 Acq: 14 Nov 2023 23:47

Instrument : BNA_M
 ClientSampleId :

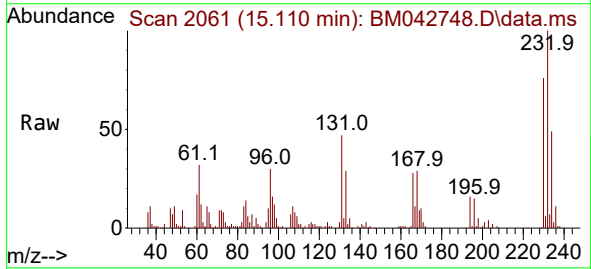


Tgt Ion:165 Resp: 74665

Ion	Ratio	Lower	Upper
165	100		
63	113.3	83.5	125.3
182	3.1	2.4	3.6

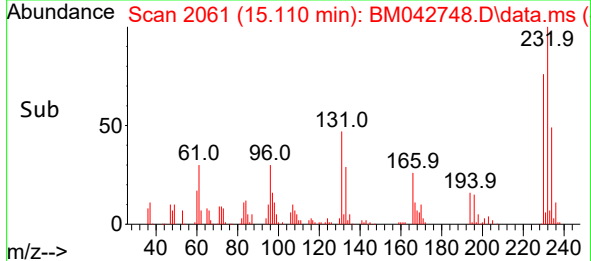
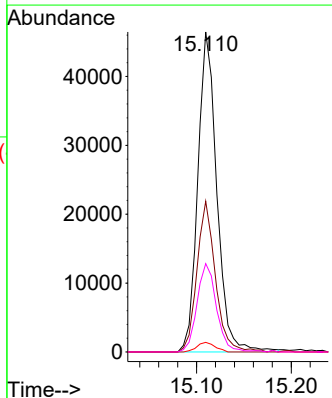


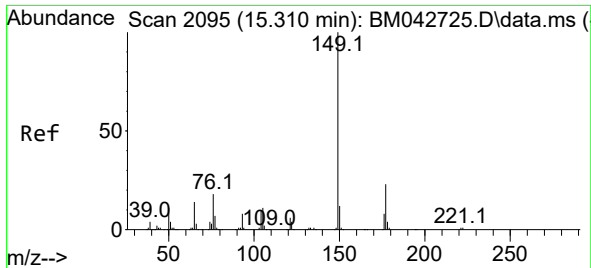
#58
 2,3,4,6-Tetrachlorophenol
 Concen: 53.494 ng/ul
 RT: 15.110 min Scan# 2061
 Delta R.T. -0.006 min
 Lab File: BM042748.D
 Acq: 14 Nov 2023 23:47



Tgt Ion:232 Resp: 64908

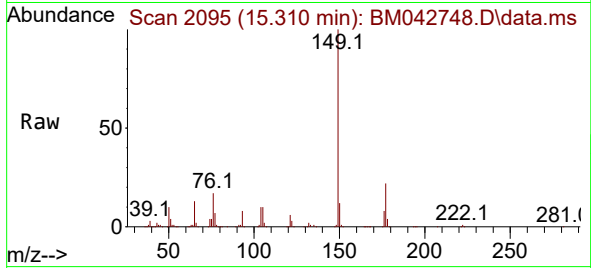
Ion	Ratio	Lower	Upper
232	100		
131	47.1	38.9	58.3
130	3.0	1.9	2.9#
166	27.6	23.9	35.9



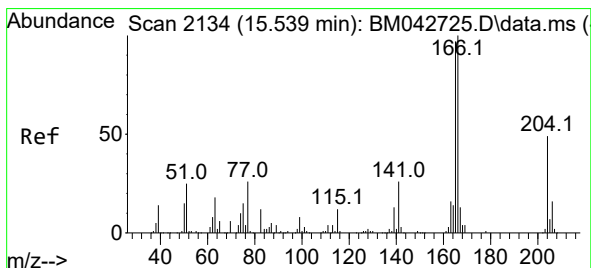
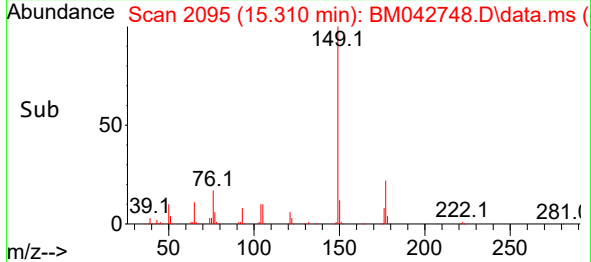
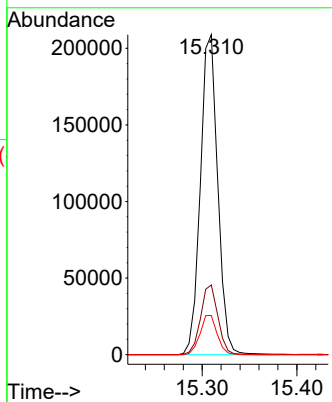


#59
 Diethylphthalate
 Concen: 54.559 ng/ul
 RT: 15.310 min Scan# 2095
 Delta R.T. -0.006 min
 Lab File: BM042748.D
 Acq: 14 Nov 2023 23:47

Instrument : BNA_M
 ClientSampleId :

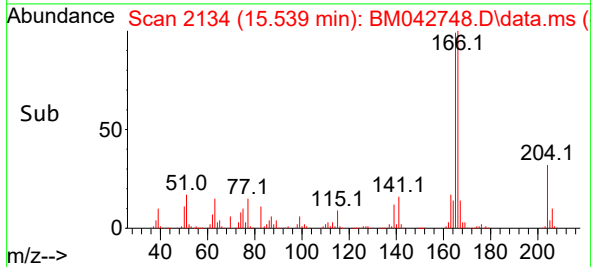
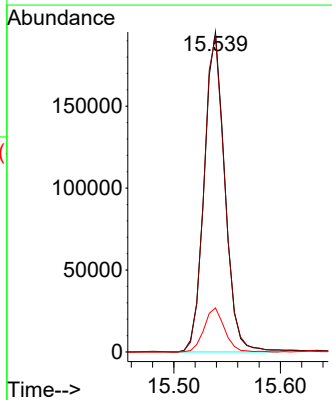
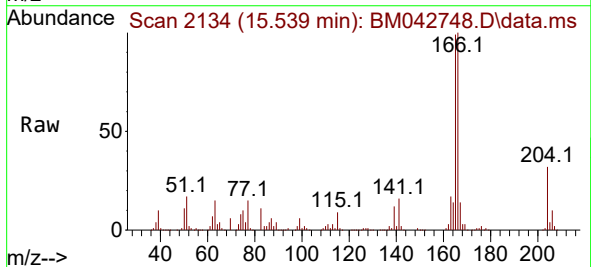


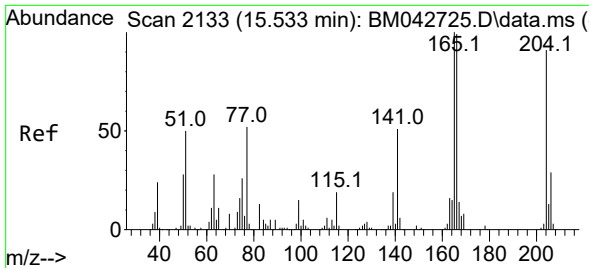
Tgt Ion:149 Resp: 266502
 Ion Ratio Lower Upper
 149 100
 177 21.8 17.0 25.6
 150 12.2 9.7 14.5



#61
 Fluorene
 Concen: 57.496 ng/ul
 RT: 15.539 min Scan# 2134
 Delta R.T. -0.006 min
 Lab File: BM042748.D
 Acq: 14 Nov 2023 23:47

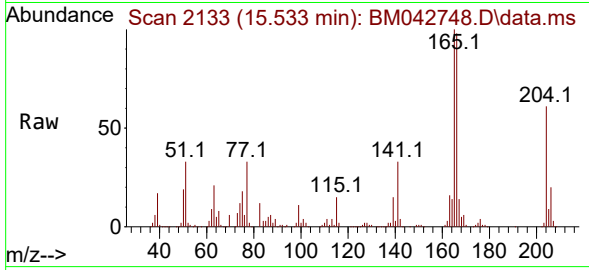
Tgt Ion:166 Resp: 262733
 Ion Ratio Lower Upper
 166 100
 165 98.7 79.3 118.9
 167 13.8 10.6 15.8



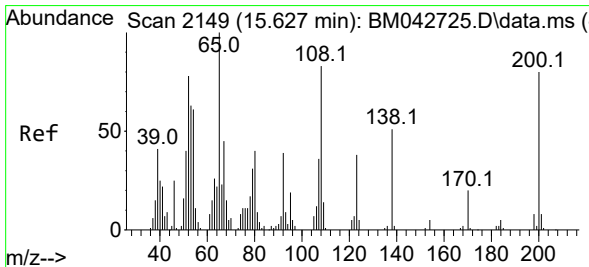
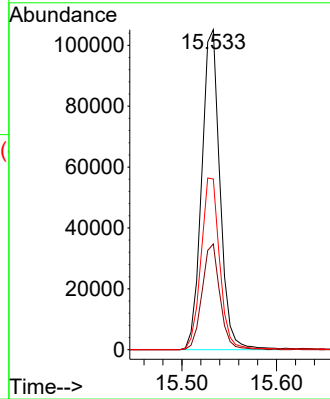
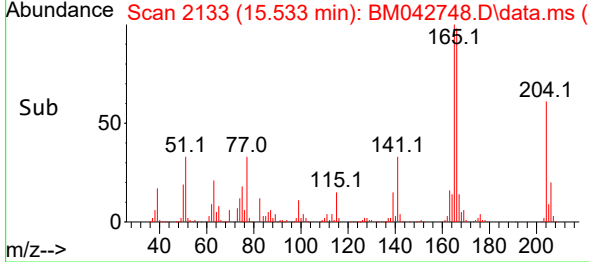


#62
 4-Chlorophenyl-phenylether
 Concen: 57.268 ng/ul
 RT: 15.533 min Scan# 2133
 Delta R.T. -0.006 min
 Lab File: BM042748.D
 Acq: 14 Nov 2023 23:47

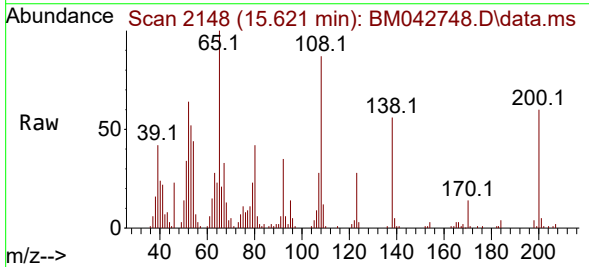
Instrument :
 BNA_M
 ClientSampleId :



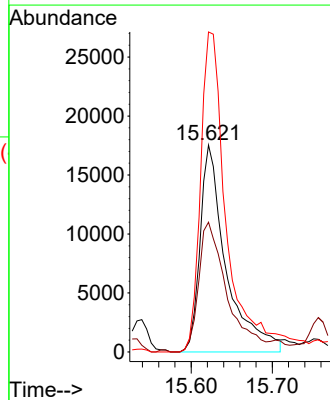
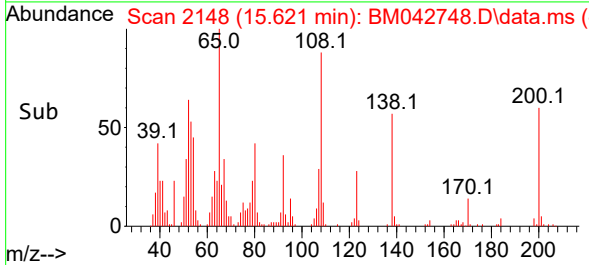
Tgt Ion:204 Resp: 141034
 Ion Ratio Lower Upper
 204 100
 206 33.1 27.0 40.4
 141 53.4 46.0 69.0

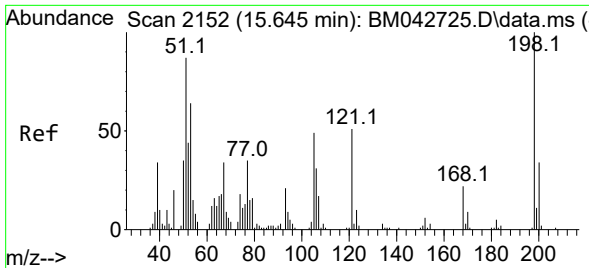


#63
 4-Nitroaniline
 Concen: 60.166 ng/ul
 RT: 15.621 min Scan# 2148
 Delta R.T. -0.006 min
 Lab File: BM042748.D
 Acq: 14 Nov 2023 23:47



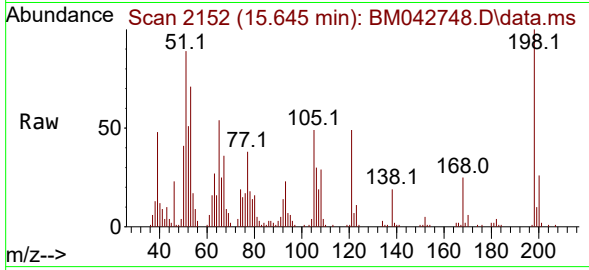
Tgt Ion:138 Resp: 39253
 Ion Ratio Lower Upper
 138 100
 92 62.7 47.4 71.0
 108 154.7 129.5 194.3



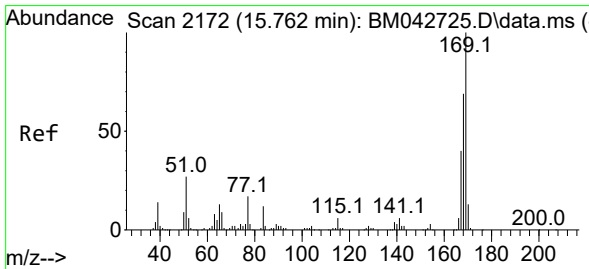
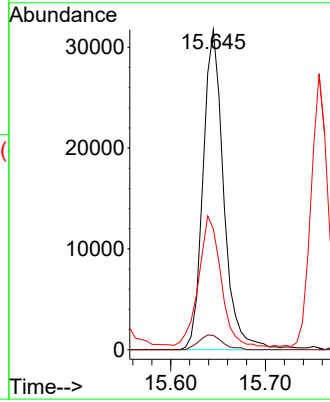
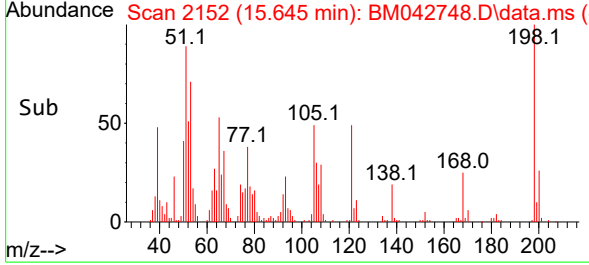


#66
 4,6-Dinitro-2-methylphenol
 Concen: 55.042 ng/ul
 RT: 15.645 min Scan# 2152
 Delta R.T. -0.006 min
 Lab File: BM042748.D
 Acq: 14 Nov 2023 23:47

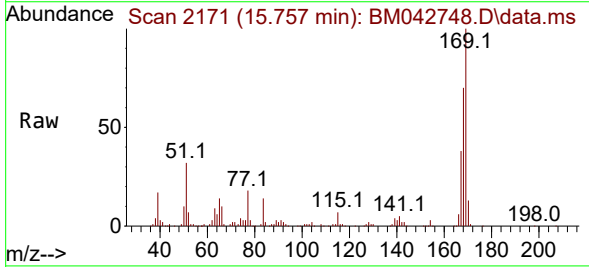
Instrument :
 BNA_M
 ClientSampleId :



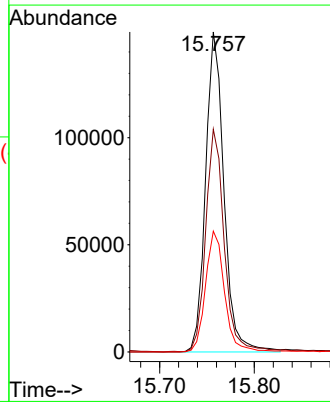
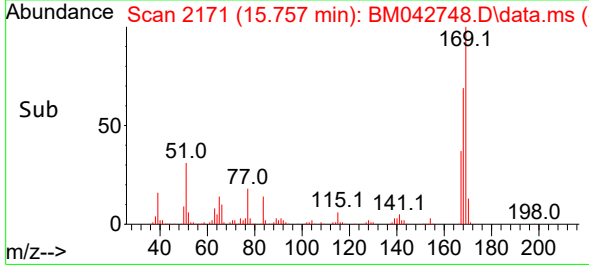
Tgt Ion:198 Resp: 48040
 Ion Ratio Lower Upper
 198 100
 182 4.4 3.4 5.0
 77 37.7 26.9 40.3

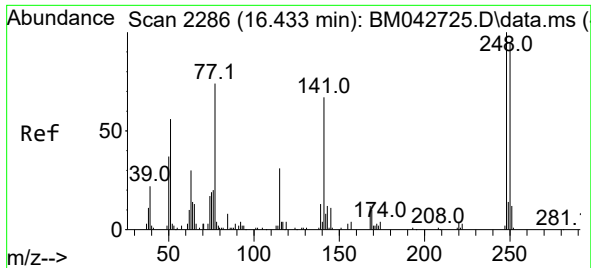


#67
 N-Nitrosodiphenylamine
 Concen: 56.672 ng/ul
 RT: 15.757 min Scan# 2171
 Delta R.T. -0.006 min
 Lab File: BM042748.D
 Acq: 14 Nov 2023 23:47



Tgt Ion:169 Resp: 201167
 Ion Ratio Lower Upper
 169 100
 168 69.6 55.8 83.6
 167 37.7 31.4 47.2

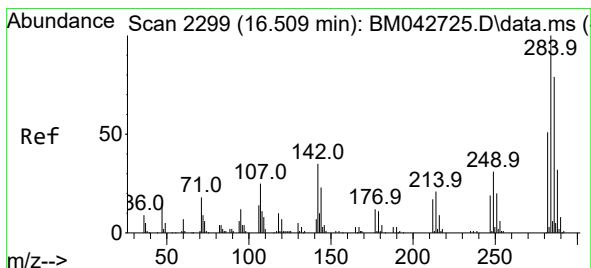
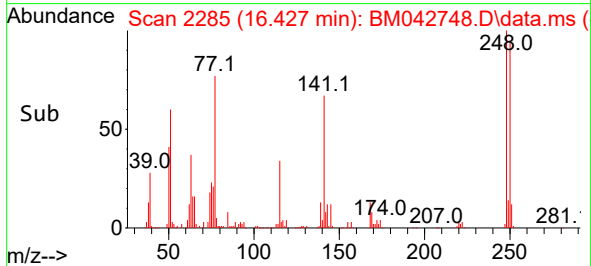
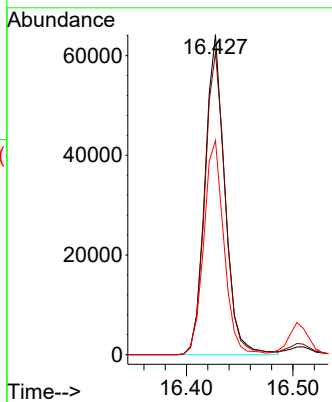
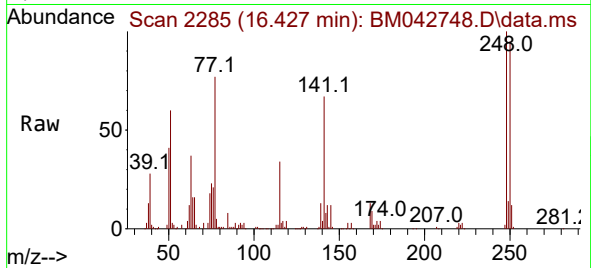




#68
 4-Bromophenyl-phenylether
 Concen: 55.381 ng/ul
 RT: 16.427 min Scan# 21
 Delta R.T. -0.006 min
 Lab File: BM042748.D
 Acq: 14 Nov 2023 23:47

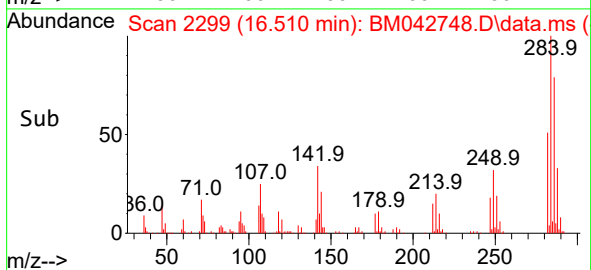
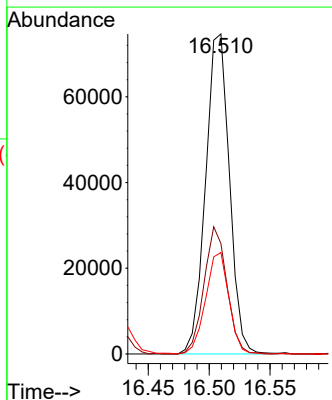
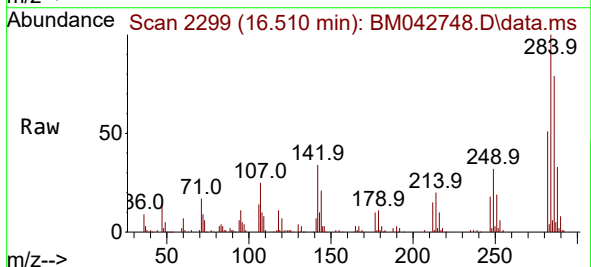
Instrument :
 BNA_M
 ClientSampleId :

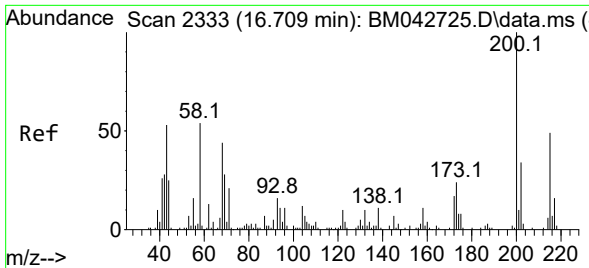
Tgt Ion:248 Resp: 83431
 Ion Ratio Lower Upper
 248 100
 250 94.6 84.3 126.5
 141 66.9 60.1 90.1



#69
 Hexachlorobenzene
 Concen: 55.252 ng/ul
 RT: 16.510 min Scan# 2299
 Delta R.T. -0.006 min
 Lab File: BM042748.D
 Acq: 14 Nov 2023 23:47

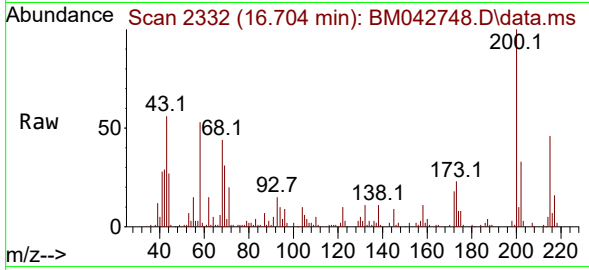
Tgt Ion:284 Resp: 101756
 Ion Ratio Lower Upper
 284 100
 142 34.5 30.5 45.7
 249 31.7 25.3 37.9



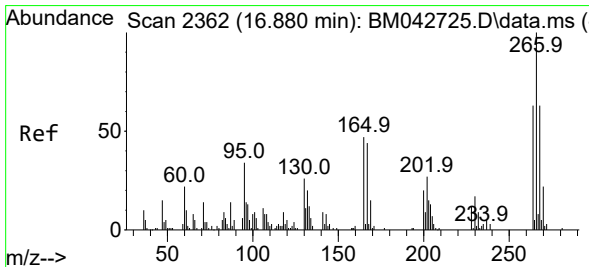
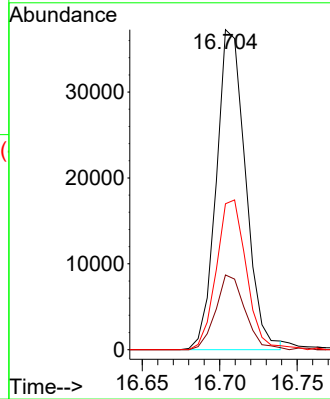
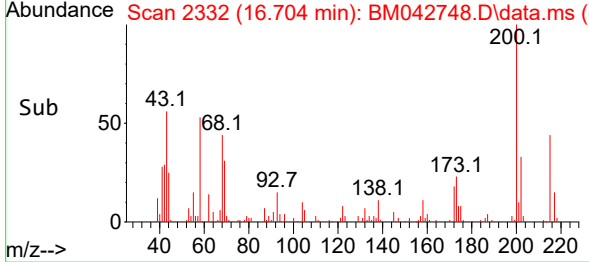


#70
 Atrazine
 Concen: 35.738 ng/ul
 RT: 16.704 min Scan# 21
 Delta R.T. -0.012 min
 Lab File: BM042748.D
 Acq: 14 Nov 2023 23:47

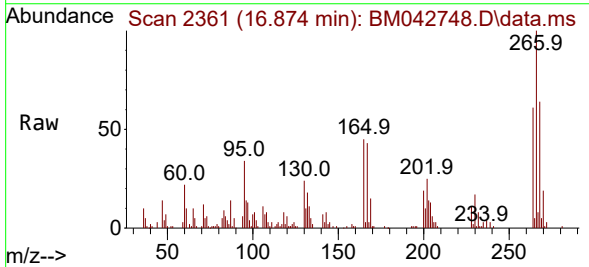
Instrument :
 BNA_M
 ClientSampleId :



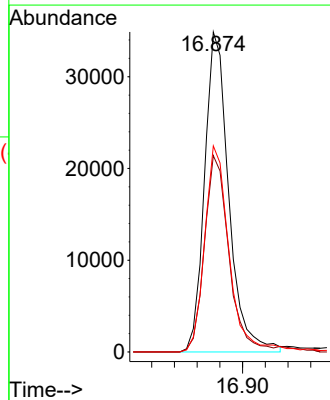
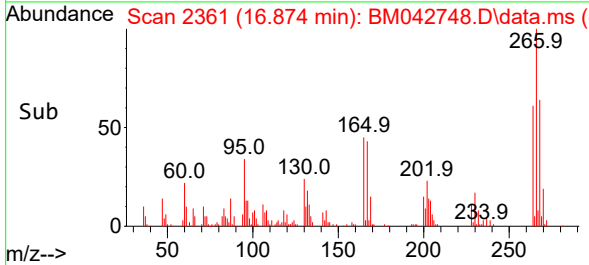
Tgt Ion:200 Resp: 48865
 Ion Ratio Lower Upper
 200 100
 173 23.3 19.8 29.6
 215 45.6 38.2 57.2

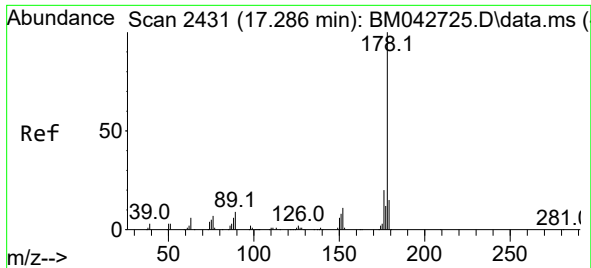


#71
 Pentachlorophenol
 Concen: 48.632 ng/ul
 RT: 16.874 min Scan# 2361
 Delta R.T. -0.012 min
 Lab File: BM042748.D
 Acq: 14 Nov 2023 23:47



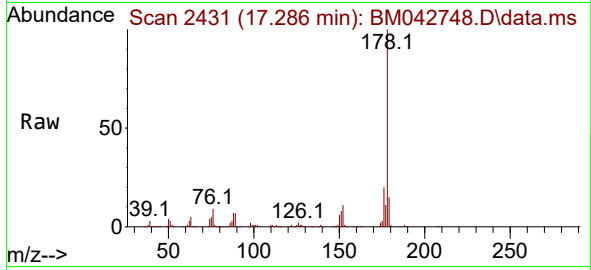
Tgt Ion:266 Resp: 51574
 Ion Ratio Lower Upper
 266 100
 264 61.4 50.3 75.5
 268 64.4 52.1 78.1



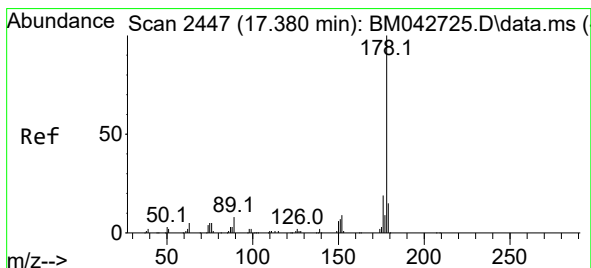
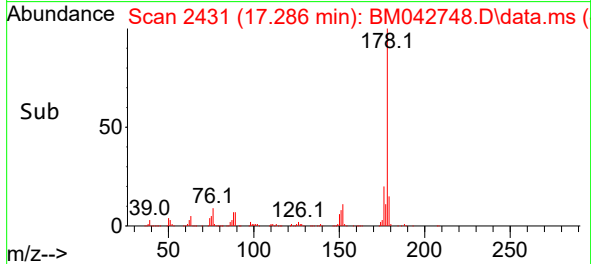
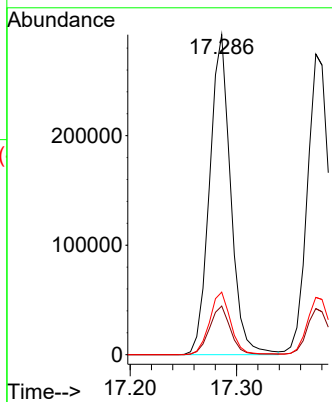


#72
 Phenanthrene
 Concen: 56.826 ng/u1
 RT: 17.286 min Scan# 2431
 Delta R.T. -0.006 min
 Lab File: BM042748.D
 Acq: 14 Nov 2023 23:47

Instrument :
 BNA_M
 ClientSampleId :

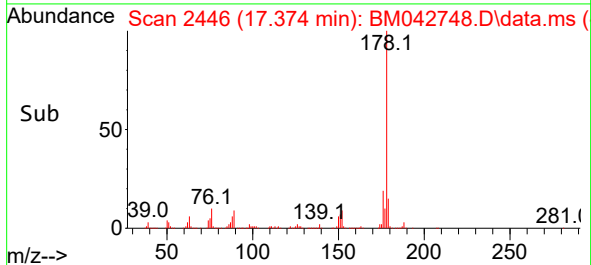
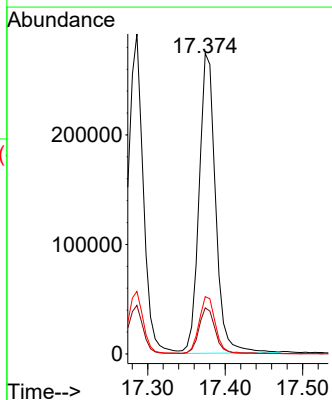
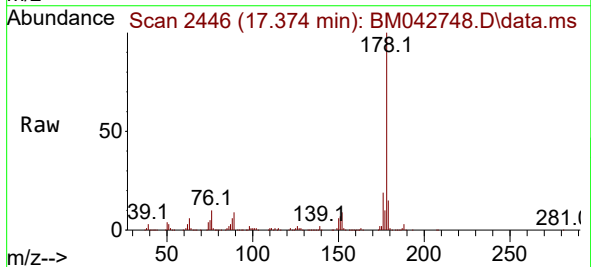


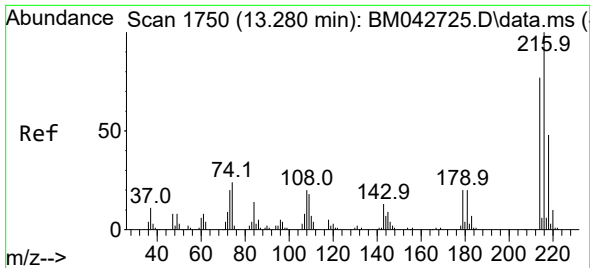
Tgt Ion:178 Resp: 401790
 Ion Ratio Lower Upper
 178 100
 179 15.2 11.4 17.2
 176 19.6 15.5 23.3



#74
 Anthracene
 Concen: 56.959 ng/u1
 RT: 17.374 min Scan# 2446
 Delta R.T. -0.012 min
 Lab File: BM042748.D
 Acq: 14 Nov 2023 23:47

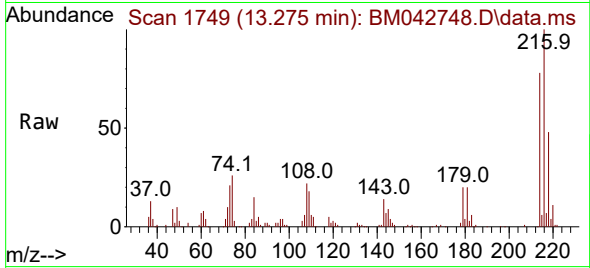
Tgt Ion:178 Resp: 405085
 Ion Ratio Lower Upper
 178 100
 179 15.4 12.0 18.0
 176 19.1 15.7 23.5



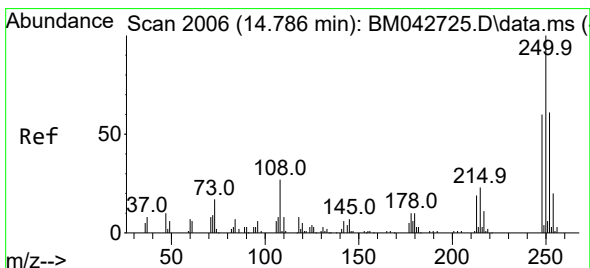
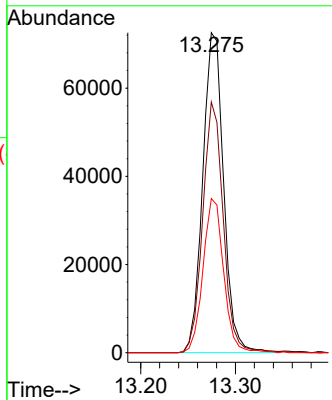
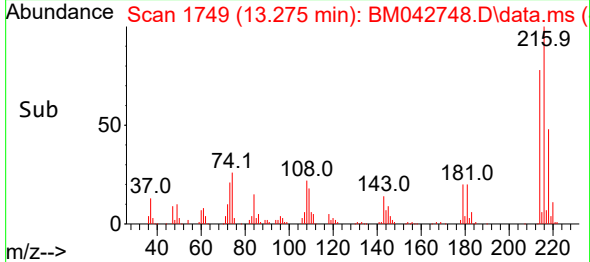


#75
 1,2,3,4-Tetrachlorobenzene
 Concen: 55.591 ng/uL
 RT: 13.275 min Scan# 11
 Delta R.T. -0.012 min
 Lab File: BM042748.D
 Acq: 14 Nov 2023 23:47

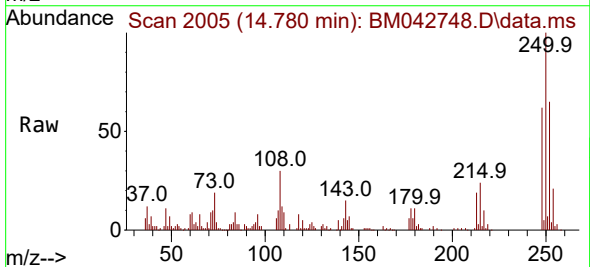
Instrument :
 BNA_M
 ClientSampleId :



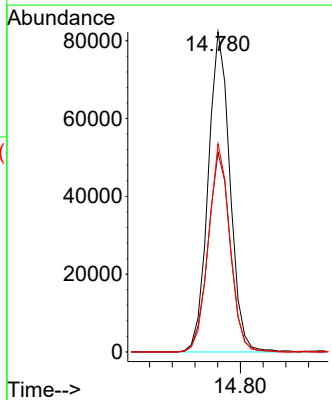
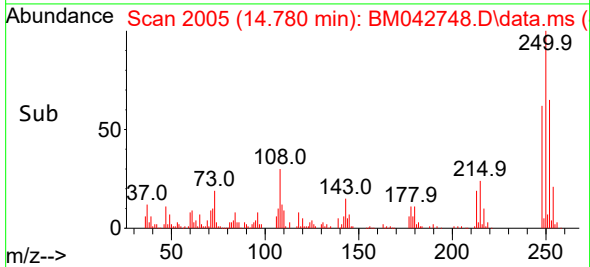
Tgt Ion:216 Resp: 111252
 Ion Ratio Lower Upper
 216 100
 214 78.3 62.6 94.0
 218 48.2 39.3 58.9

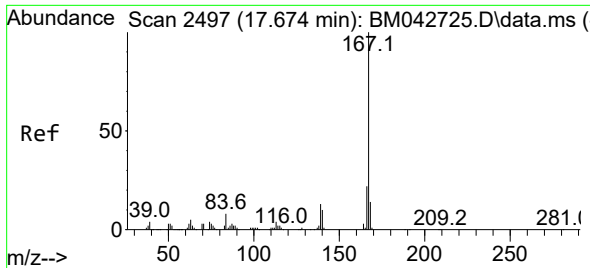


#76
 Pentachlorobenzene
 Concen: 52.071 ng/uL
 RT: 14.780 min Scan# 2005
 Delta R.T. -0.012 min
 Lab File: BM042748.D
 Acq: 14 Nov 2023 23:47



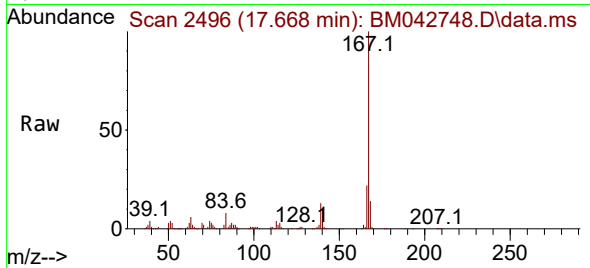
Tgt Ion:250 Resp: 109342
 Ion Ratio Lower Upper
 250 100
 248 62.4 51.0 76.6
 252 65.1 51.8 77.8



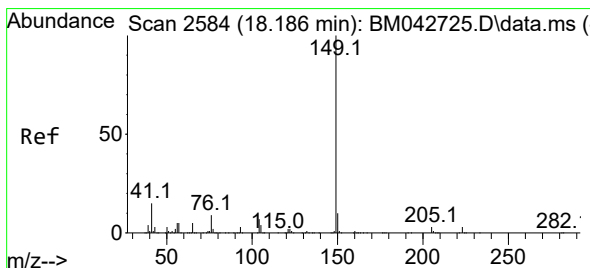
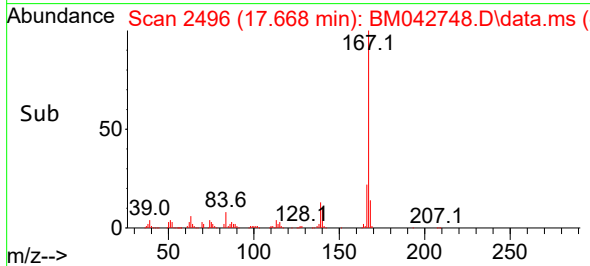
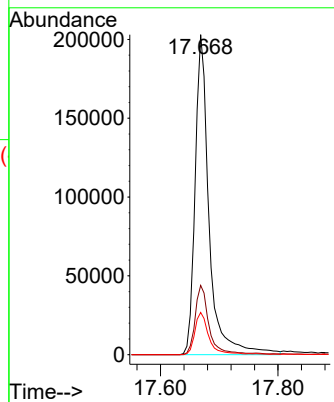


#77
 Carbazole
 Concen: 57.248 ng/ul
 RT: 17.668 min Scan# 2496
 Delta R.T. -0.006 min
 Lab File: BM042748.D
 Acq: 14 Nov 2023 23:47

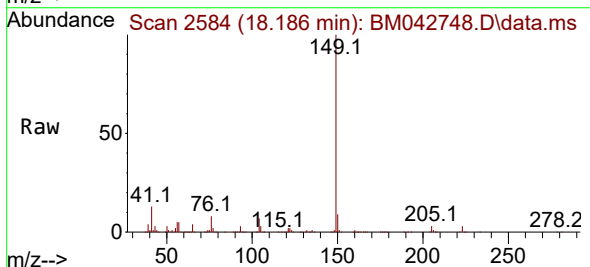
Instrument :
 BNA_M
 ClientSampleId :



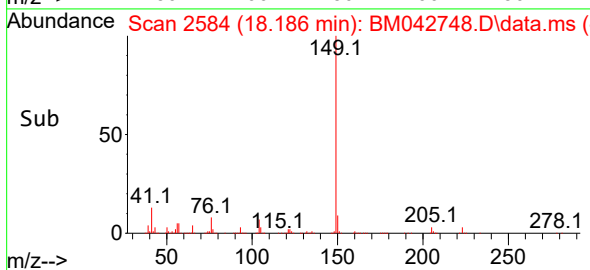
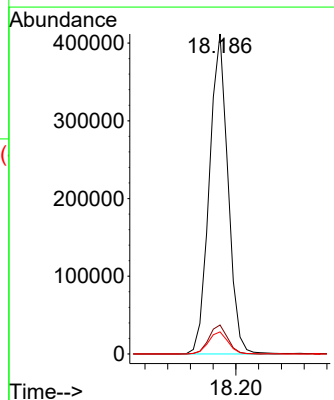
Tgt Ion:167 Resp: 336185
 Ion Ratio Lower Upper
 167 100
 166 21.7 17.2 25.8
 139 13.2 10.8 16.2

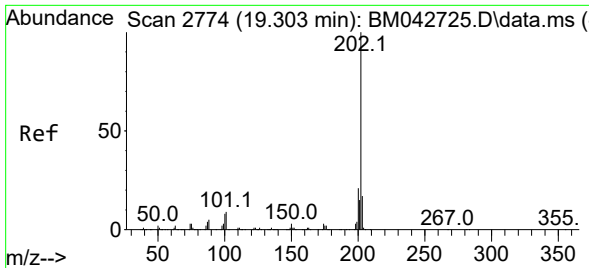


#78
 Di-n-butylphthalate
 Concen: 54.565 ng/ul
 RT: 18.186 min Scan# 2584
 Delta R.T. -0.006 min
 Lab File: BM042748.D
 Acq: 14 Nov 2023 23:47



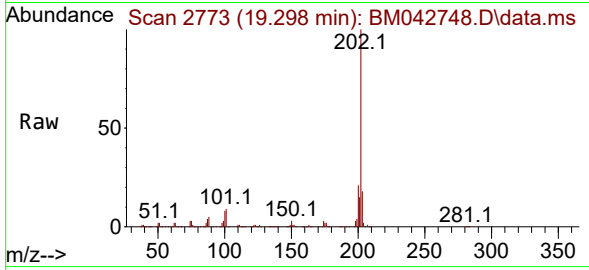
Tgt Ion:149 Resp: 468567
 Ion Ratio Lower Upper
 149 100
 150 9.1 7.7 11.5
 104 6.9 5.3 7.9



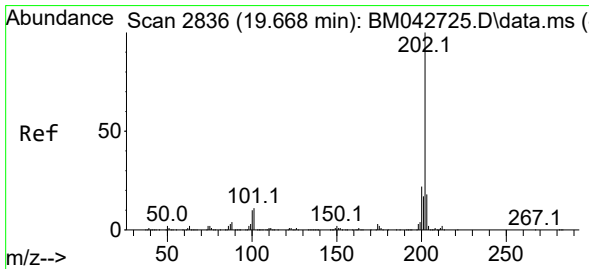
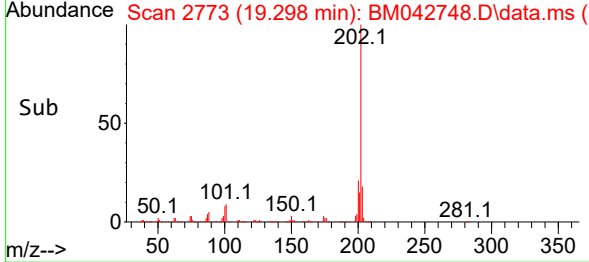
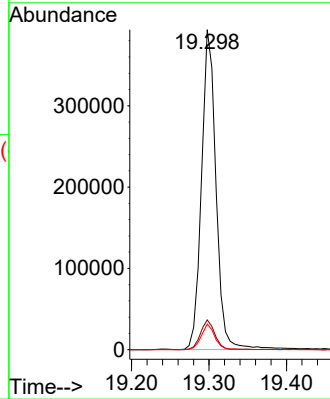


#80
 Fluoranthene
 Concen: 53.366 ng/uI
 RT: 19.298 min Scan# 2773
 Delta R.T. -0.012 min
 Lab File: BM042748.D
 Acq: 14 Nov 2023 23:47

Instrument :
 BNA_M
 ClientSampleId :

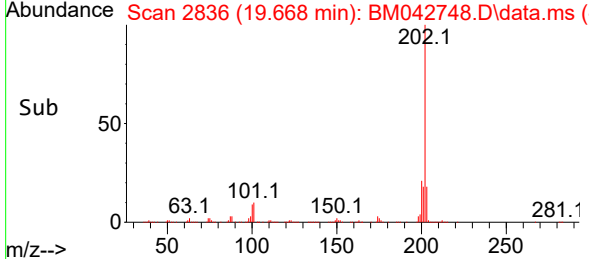
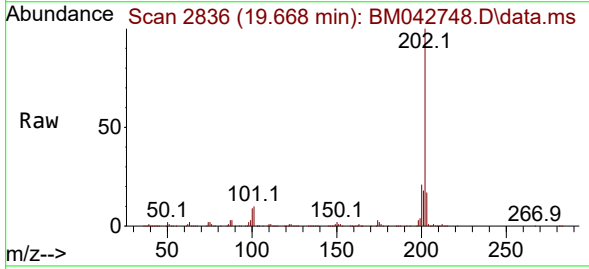
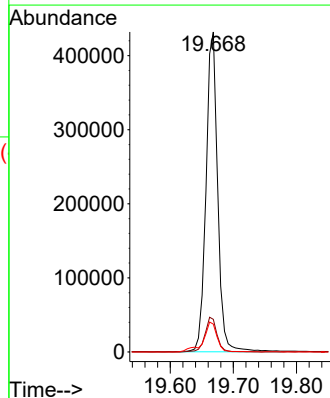


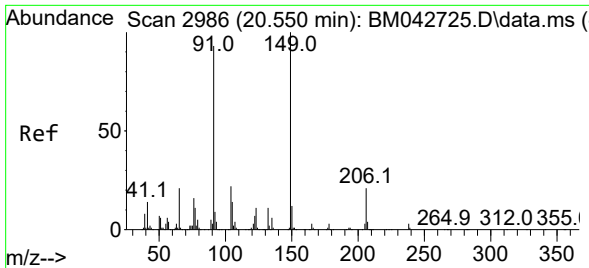
Tgt Ion:202 Resp: 512161
 Ion Ratio Lower Upper
 202 100
 101 9.3 6.6 9.8
 100 8.0 5.6 8.4



#82
 Pyrene
 Concen: 54.461 ng/uI
 RT: 19.668 min Scan# 2836
 Delta R.T. -0.006 min
 Lab File: BM042748.D
 Acq: 14 Nov 2023 23:47

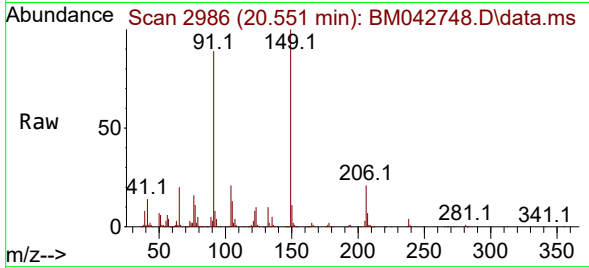
Tgt Ion:202 Resp: 554195
 Ion Ratio Lower Upper
 202 100
 101 10.2 8.1 12.1
 100 8.7 6.9 10.3





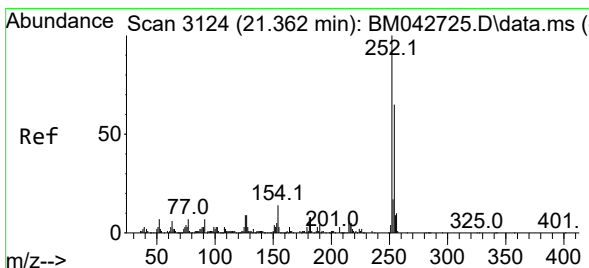
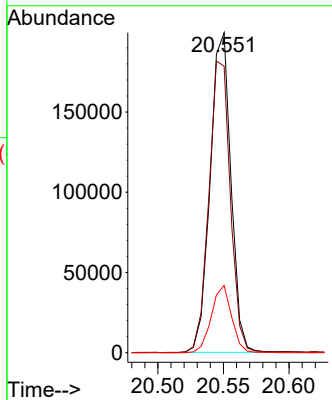
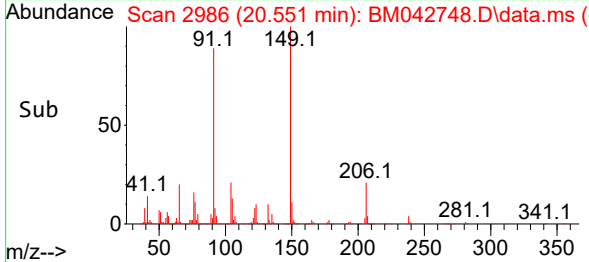
#83
 Butylbenzylphthalate
 Concen: 50.520 ng/ul
 RT: 20.551 min Scan# 2986
 Delta R.T. -0.006 min
 Lab File: BM042748.D
 Acq: 14 Nov 2023 23:47

Instrument :
 BNA_M
 ClientSampleId :

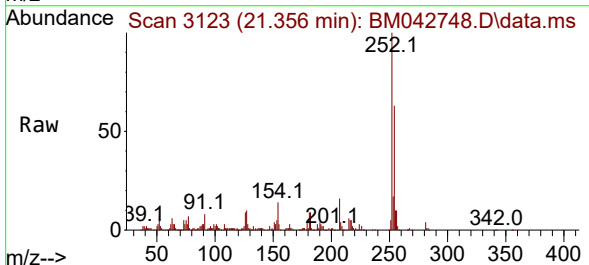


Tgt Ion:149 Resp: 219577

Ion	Ratio	Lower	Upper
149	100		
91	89.5	69.3	103.9
206	21.0	16.6	25.0

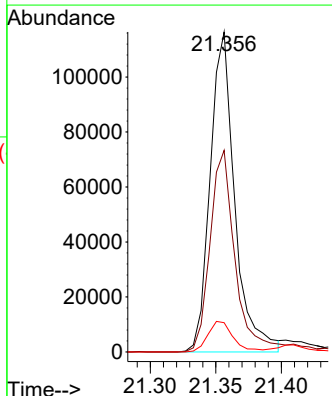
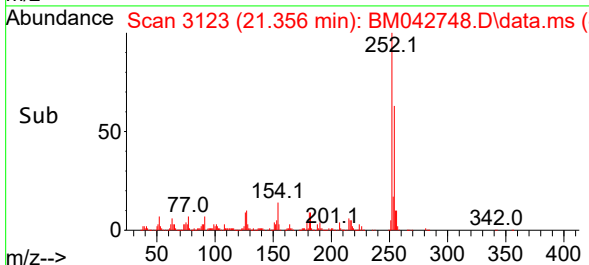


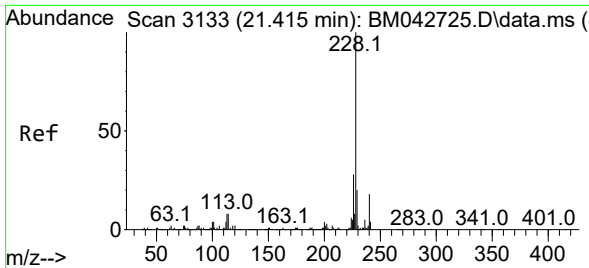
#84
 3,3'-Dichlorobenzidine
 Concen: 46.090 ng/ul
 RT: 21.356 min Scan# 3123
 Delta R.T. -0.006 min
 Lab File: BM042748.D
 Acq: 14 Nov 2023 23:47



Tgt Ion:252 Resp: 151621

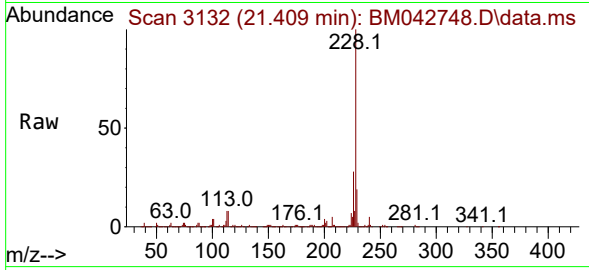
Ion	Ratio	Lower	Upper
252	100		
254	63.0	51.8	77.6
126	9.1	7.8	11.8



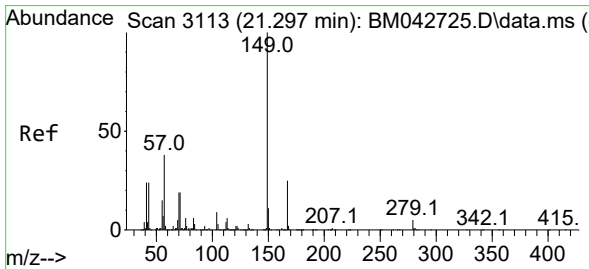
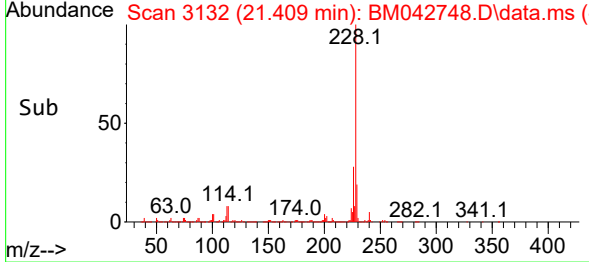
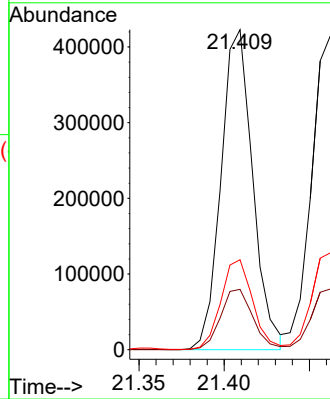


#85
 Benzo(a)anthracene
 Concen: 54.205 ng/ul
 RT: 21.409 min Scan# 3132
 Delta R.T. -0.006 min
 Lab File: BM042748.D
 Acq: 14 Nov 2023 23:47

Instrument :
 BNA_M
 ClientSampleId :

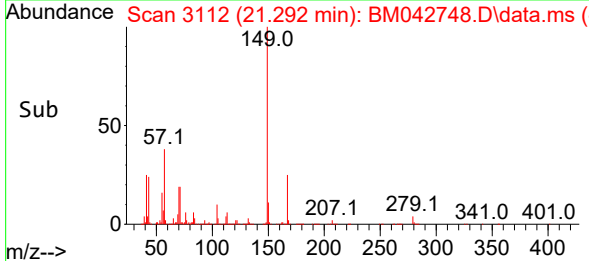
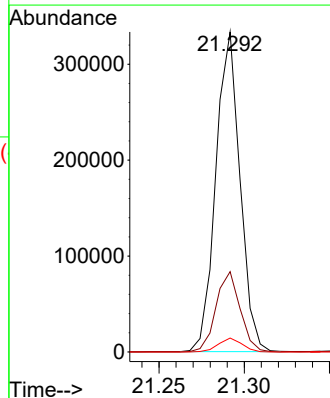
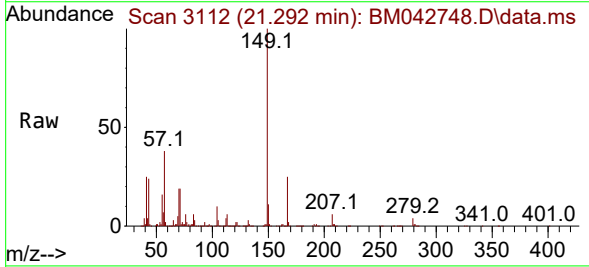


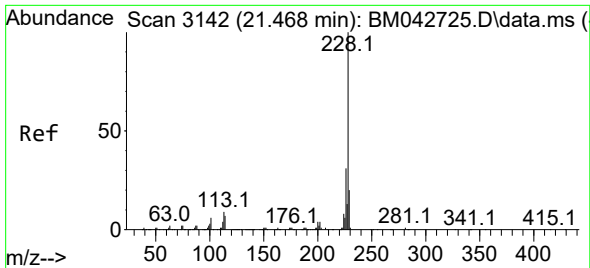
Tgt Ion:228 Resp: 546931
 Ion Ratio Lower Upper
 228 100
 229 18.8 15.8 23.6
 226 28.1 22.5 33.7



#86
 Bis(2-ethylhexyl)phthalate
 Concen: 49.772 ng/ul
 RT: 21.292 min Scan# 3112
 Delta R.T. -0.006 min
 Lab File: BM042748.D
 Acq: 14 Nov 2023 23:47

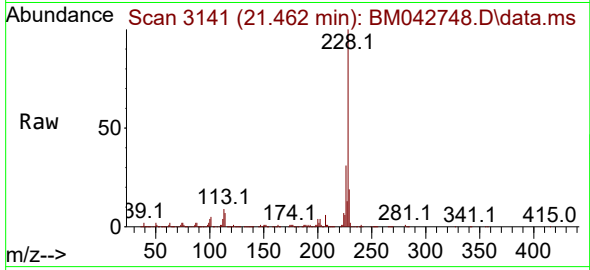
Tgt Ion:149 Resp: 328213
 Ion Ratio Lower Upper
 149 100
 167 25.1 20.6 31.0
 279 4.3 3.5 5.3



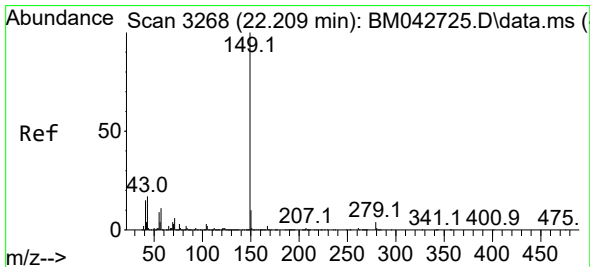
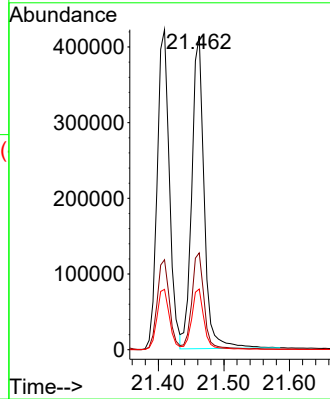
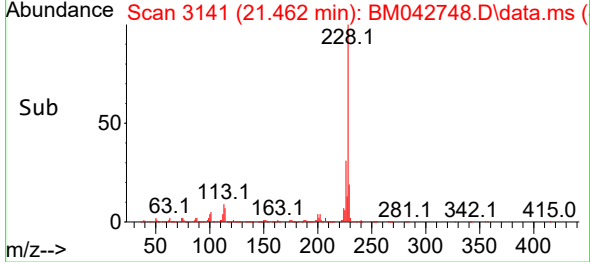


#87
 Chrysene
 Concen: 55.296 ng/uI
 RT: 21.462 min Scan# 3142
 Delta R.T. -0.006 min
 Lab File: BM042748.D
 Acq: 14 Nov 2023 23:47

Instrument :
 BNA_M
 ClientSampleId :

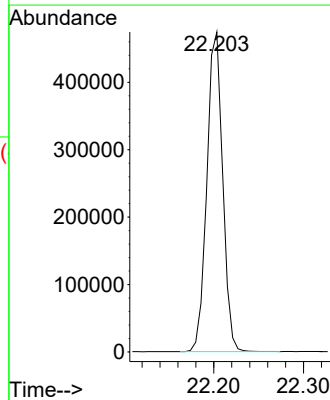
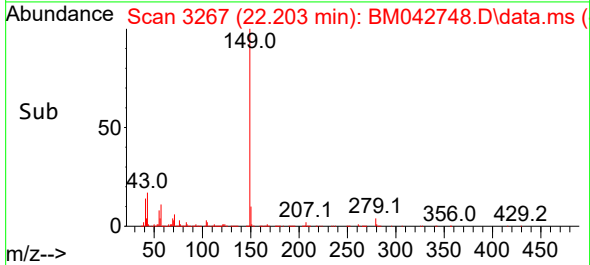
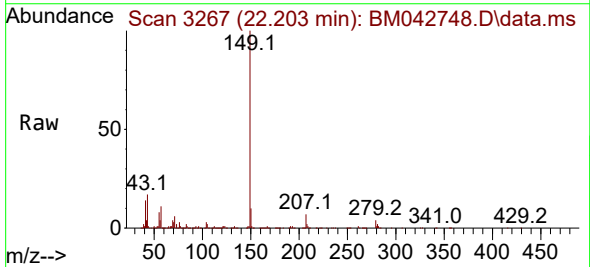


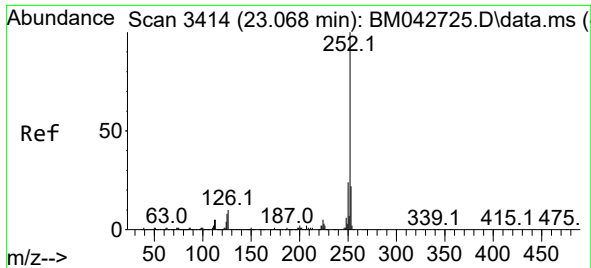
Tgt Ion:228 Resp: 541104
 Ion Ratio Lower Upper
 228 100
 226 30.8 24.3 36.5
 229 19.3 15.7 23.5



#89
 Di-n-octyl phthalate
 Concen: 52.099 ng/uI
 RT: 22.203 min Scan# 3267
 Delta R.T. -0.012 min
 Lab File: BM042748.D
 Acq: 14 Nov 2023 23:47

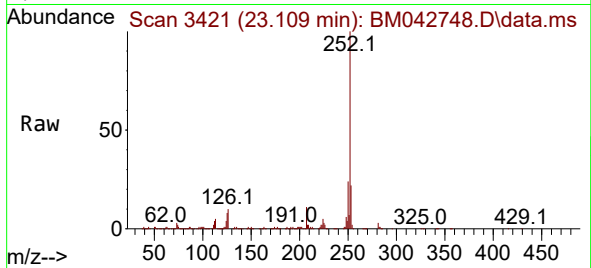
Tgt Ion:149 Resp: 578561



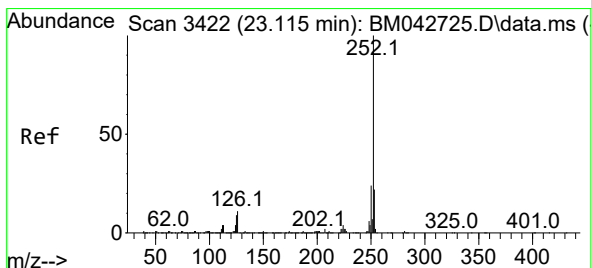
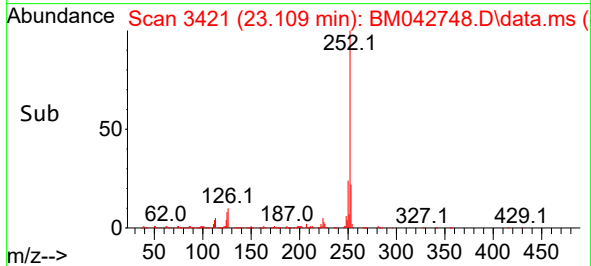
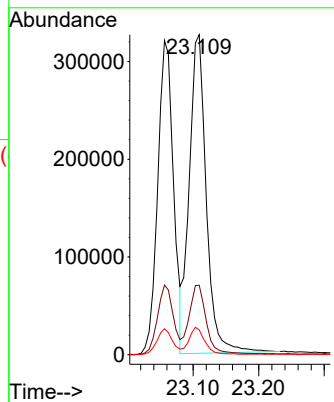


#90
 Benzo(b)fluoranthene
 Concen: 62.521 ng/ul
 RT: 23.109 min Scan# 3414
 Delta R.T. 0.035 min
 Lab File: BM042748.D
 Acq: 14 Nov 2023 23:47

Instrument :
 BNA_M
 ClientSampleId :

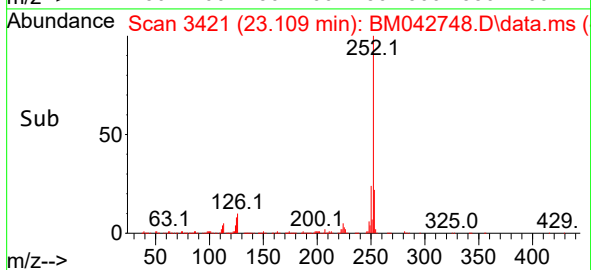
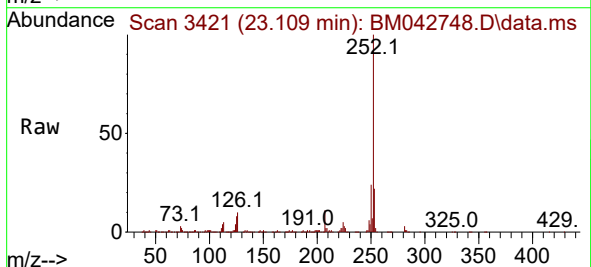
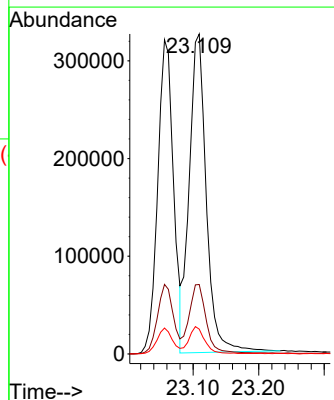


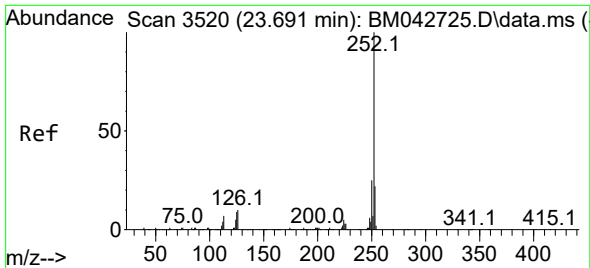
Tgt Ion:252 Resp: 586576
 Ion Ratio Lower Upper
 252 100
 253 21.7 17.0 25.6
 125 7.8 5.2 7.8



#91
 Benzo(k)fluoranthene
 Concen: 58.732 ng/ul
 RT: 23.109 min Scan# 3421
 Delta R.T. -0.012 min
 Lab File: BM042748.D
 Acq: 14 Nov 2023 23:47

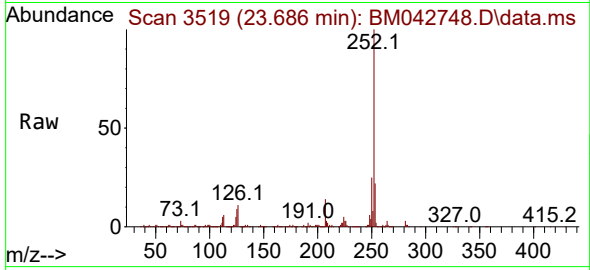
Tgt Ion:252 Resp: 586576
 Ion Ratio Lower Upper
 252 100
 253 21.7 17.5 26.3
 125 7.8 5.5 8.3





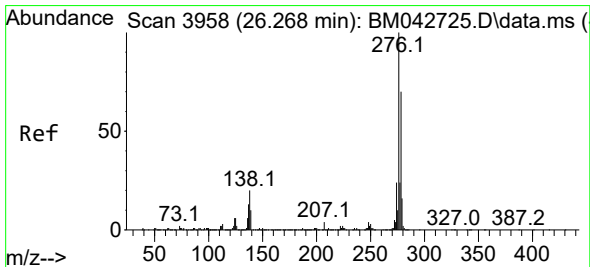
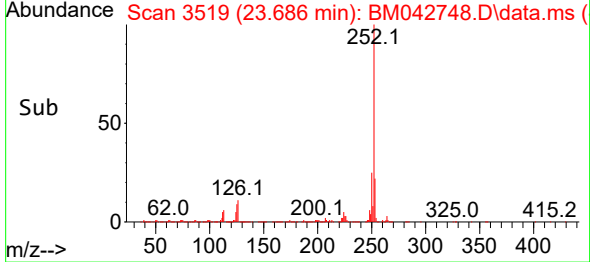
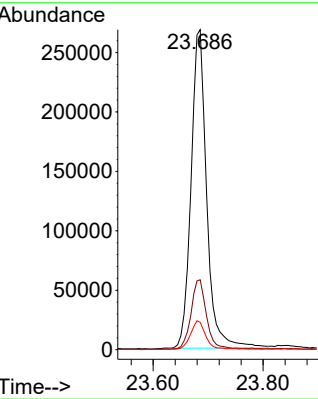
#93
 Benzo(a)pyrene
 Concen: 57.897 ng/u1
 RT: 23.686 min Scan# 31
 Delta R.T. -0.012 min
 Lab File: BM042748.D
 Acq: 14 Nov 2023 23:47

Instrument :
 BNA_M
 ClientSampleId :



Tgt Ion:252 Resp: 529306

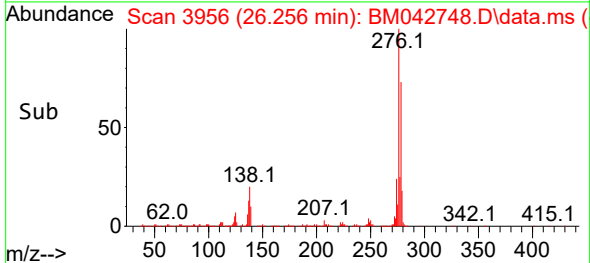
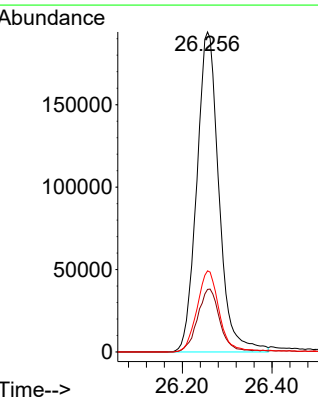
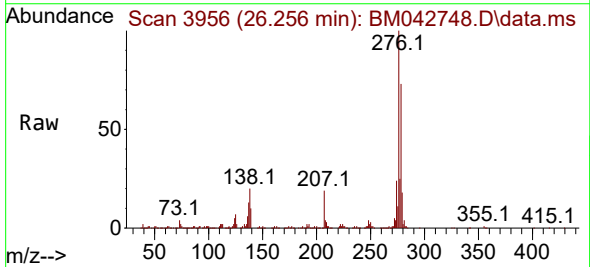
Ion	Ratio	Lower	Upper
252	100		
253	21.8	17.0	25.6
125	8.5	6.3	9.5

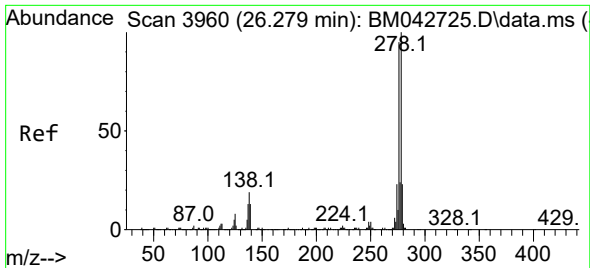


#94
 Indeno(1,2,3-cd)pyrene
 Concen: 58.644 ng/u1
 RT: 26.256 min Scan# 3956
 Delta R.T. -0.023 min
 Lab File: BM042748.D
 Acq: 14 Nov 2023 23:47

Tgt Ion:276 Resp: 666305

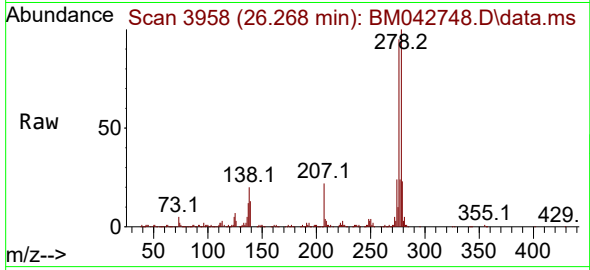
Ion	Ratio	Lower	Upper
276	100		
138	19.6	13.8	20.8
277	25.3	19.7	29.5



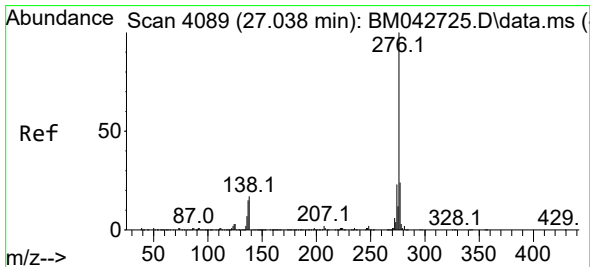
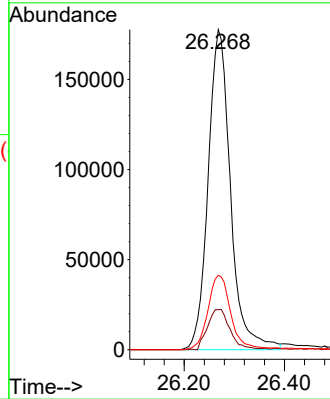
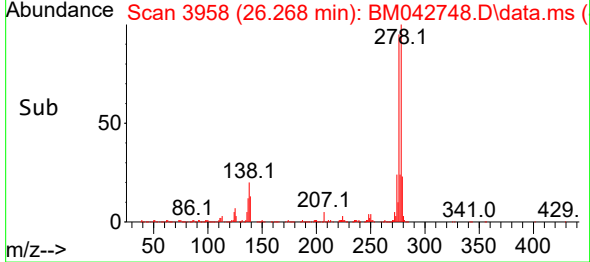


#95
 Dibenzo(a,h)anthracene
 Concen: 58.431 ng/ul
 RT: 26.268 min Scan# 3958
 Delta R.T. -0.029 min
 Lab File: BM042748.D
 Acq: 14 Nov 2023 23:47

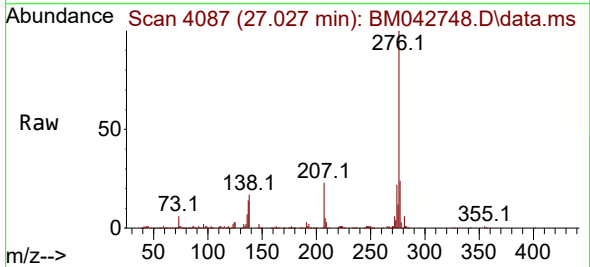
Instrument :
 BNA_M
 ClientSampleId :



Tgt Ion:278 Resp: 550402
 Ion Ratio Lower Upper
 278 100
 139 12.5 9.0 13.4
 279 23.3 18.8 28.2



#96
 Benzo(g,h,i)perylene
 Concen: 57.132 ng/ul
 RT: 27.027 min Scan# 4087
 Delta R.T. -0.023 min
 Lab File: BM042748.D
 Acq: 14 Nov 2023 23:47



Tgt Ion:276 Resp: 515461
 Ion Ratio Lower Upper
 276 100
 138 16.8 13.0 19.6
 277 23.6 18.4 27.6

