

Data Path : Z:\svoasrv\HPCHEM1\BNA\_M\Data\BM111624\  
 Data File : BM048750.D  
 Acq On : 16 Nov 2024 20:05  
 Operator : RC/JU  
 Sample : P4803-18  
 Misc :  
 ALS Vial : 16 Sample Multiplier: 1

Instrument :  
 BNA\_M  
 ClientSampleId :  
 A0AS3

Manual Integrations  
 APPROVED

Reviewed By :Yogesh Patel 11/19/2024  
 Supervised By :mohammad ahmed 11/19/2024

Quant Time: Nov 17 22:49:33 2024  
 Quant Method : Z:\svoasrv\HPCHEM1\BNA\_M\Methods\SFAM-EPA-SIM-BM110624.M  
 Quant Title : ASP BNA STANDARDS FOR 5 POINT CALIBRATION  
 QLast Update : Sun Nov 17 22:31:02 2024  
 Response via : Initial Calibration

Compound	R.T.	QIon	Response	Conc	Units	Dev(Min)
Internal Standards						
1) 1,4-Dichlorobenzene-d4	7.629	152	3300	0.400	ng/ul	-0.05
4) Naphthalene-d8	10.410	136	9920	0.400	ng/ul	-0.03
9) Acenaphthene-d10	14.277	164	5531	0.400	ng/ul	0.00
13) Phenanthrene-d10	17.024	188	10021m	0.400	ng/ul	-0.02
17) Chrysene-d12	21.220	240	8809m	0.400	ng/ul	0.00
23) Perylene-d12	23.421	264	8002m	0.400	ng/ul	-0.01
System Monitoring Compounds						
3) 1,4-Dioxane-d8	3.089	96	21207	5.327	ng/ul	0.00
6) 2-Methylnaphthalene-d10	12.026	152	4343	0.339	ng/ul	-0.02
18) Fluoranthene-d10	19.059	212	9859	0.399	ng/ul	-0.01
Target Compounds						
21) Benzo(a)anthracene	21.208	228	625	0.022	ng/ul#	17
22) Chrysene	21.258	228	1079	0.031	ng/ul#	41
24) Benzo(b)fluoranthene	22.760	252	784	0.031	ng/ul#	1
25) Benzo(k)fluoranthene	22.804	252	703	0.024	ng/ul#	1

(#) = qualifier out of range (m) = manual integration (+) = signals summed

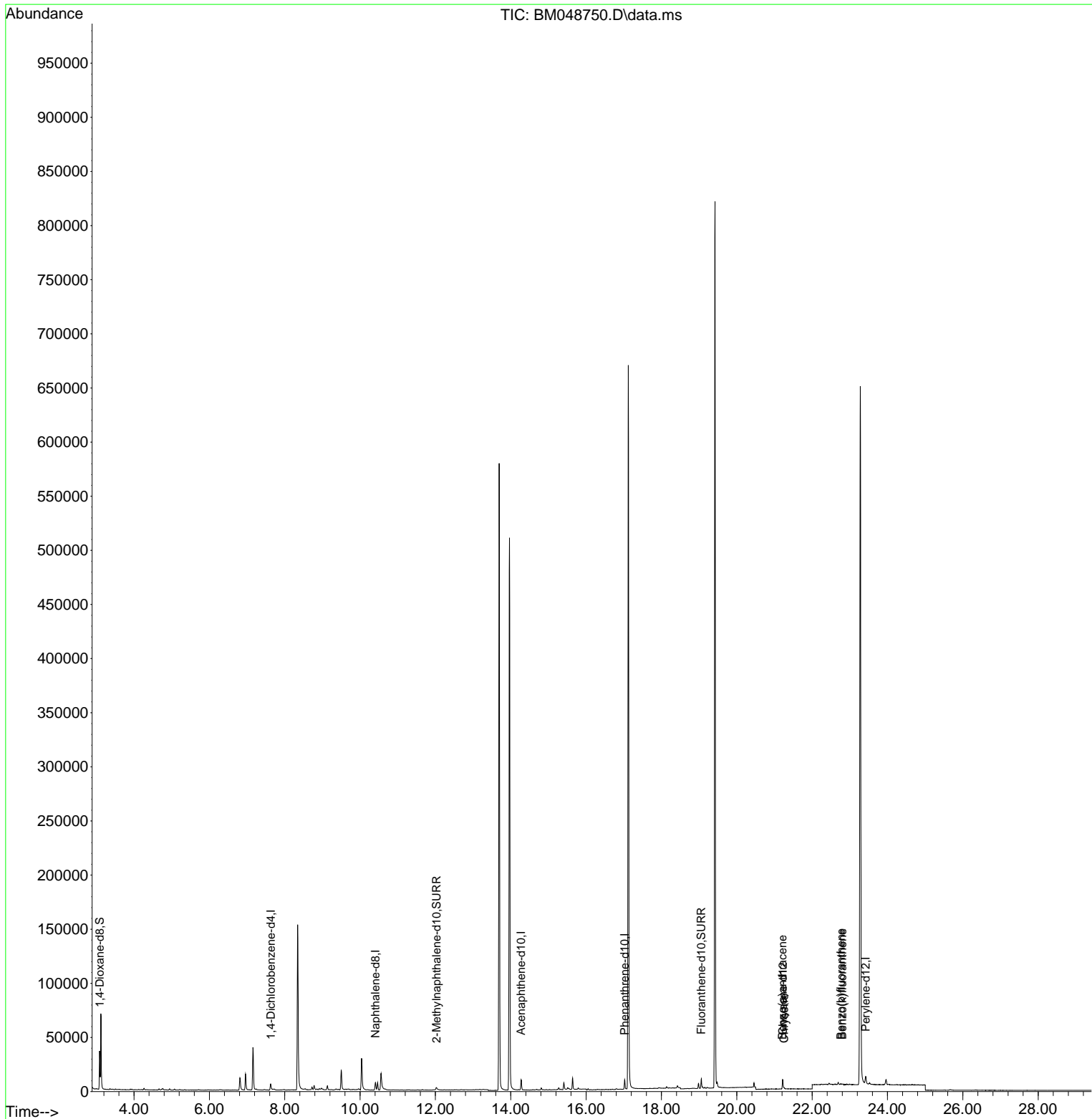
Data Path : Z:\svoasrv\HPCHEM1\BNA\_M\Data\BM111624\  
 Data File : BM048750.D  
 Acq On : 16 Nov 2024 20:05  
 Operator : RC/JU  
 Sample : P4803-18  
 Misc :  
 ALS Vial : 16 Sample Multiplier: 1

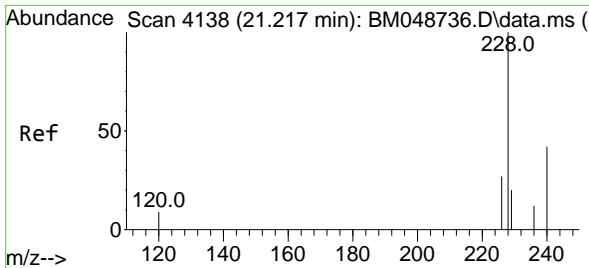
Instrument :  
 BNA\_M  
 ClientSampleId :  
 A0AS3

Quant Time: Nov 17 22:49:33 2024  
 Quant Method : Z:\svoasrv\HPCHEM1\BNA\_M\Methods\SFAM-EPA-SIM-BM110624.M  
 Quant Title : ASP BNA STANDARDS FOR 5 POINT CALIBRATION  
 QLast Update : Sun Nov 17 22:31:02 2024  
 Response via : Initial Calibration

Manual Integrations  
 APPROVED

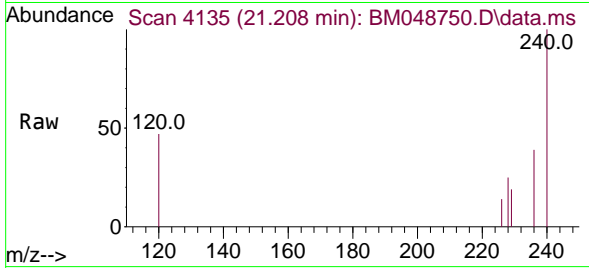
Reviewed By :Yogesh Patel 11/19/2024  
 Supervised By :mohammad ahmed 11/19/2024





#21  
 Benzo(a)anthracene  
 Concen: 0.022 ng/u1  
 RT: 21.208 min Scan# 4135  
 Delta R.T. -0.009 min  
 Lab File: BM048750.D  
 Acq: 16 Nov 2024 20:05

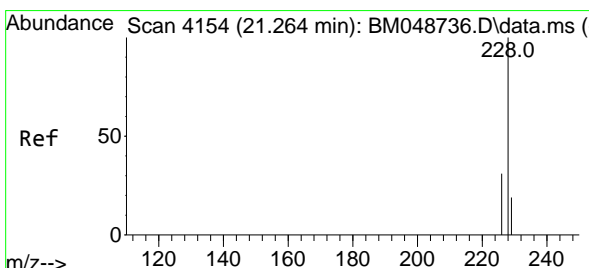
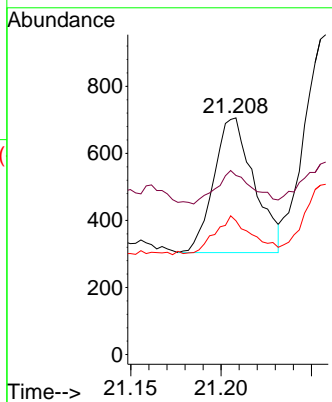
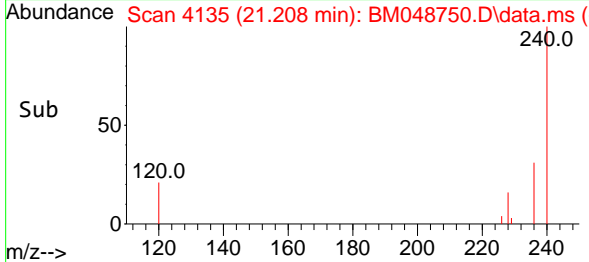
Instrument :  
 BNA\_M  
 ClientSampleId :  
 A0AS3



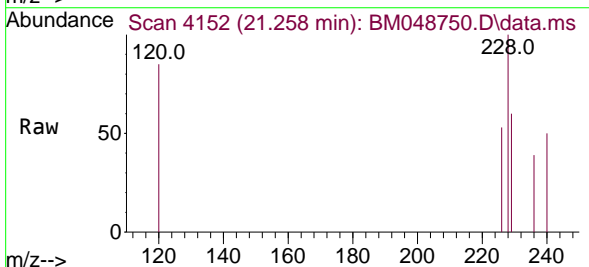
Tgt Ion:228 Resp: 629  
 Ion Ratio Lower Upper  
 228 100  
 229 75.6 16.2 24.2#  
 226 56.5 22.1 33.1#

Manual Integrations  
 APPROVED

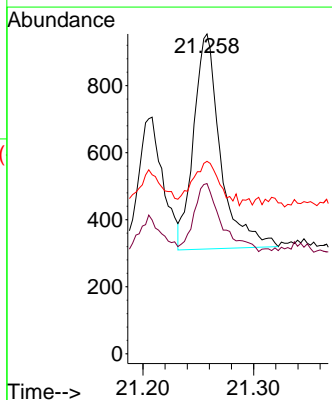
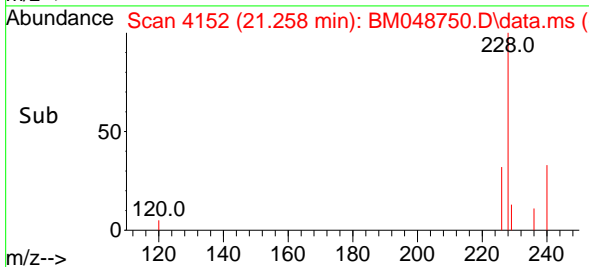
Reviewed By :Yogesh Patel 11/19/2024  
 Supervised By :mohammad ahmed 11/19/2024

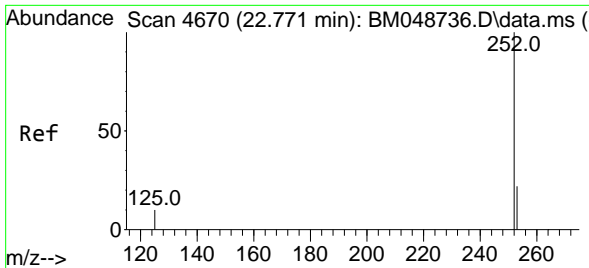


#22  
 Chrysene  
 Concen: 0.031 ng/u1  
 RT: 21.258 min Scan# 4152  
 Delta R.T. -0.006 min  
 Lab File: BM048750.D  
 Acq: 16 Nov 2024 20:05



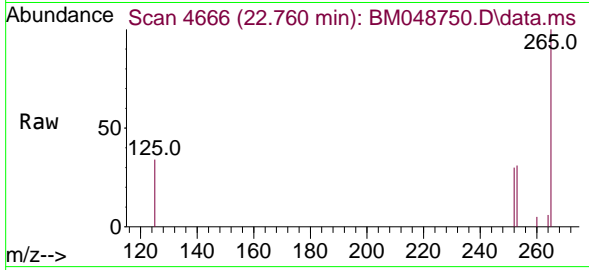
Tgt Ion:228 Resp: 1079  
 Ion Ratio Lower Upper  
 228 100  
 226 53.2 24.4 36.6#  
 229 60.2 16.5 24.7#





#24  
 Benzo(b)fluoranthene  
 Concen: 0.031 ng/ul  
 RT: 22.760 min Scan# 4666  
 Delta R.T. -0.012 min  
 Lab File: BM048750.D  
 Acq: 16 Nov 2024 20:05

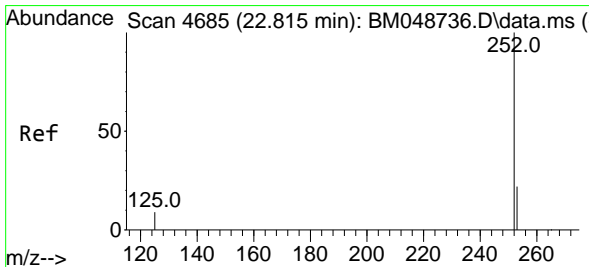
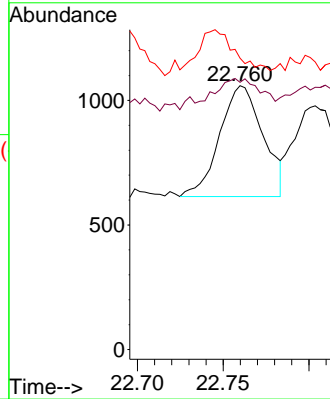
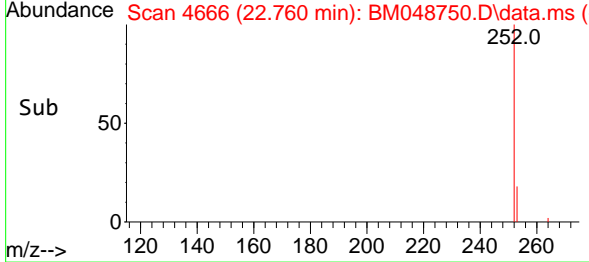
Instrument :  
 BNA\_M  
 ClientSampleId :  
 A0AS3



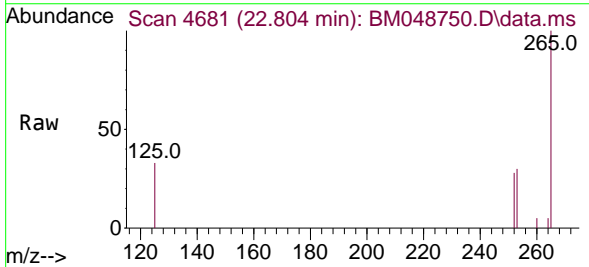
Tgt Ion:252 Resp: 784  
 Ion Ratio Lower Upper  
 252 100  
 253 101.3 0.0 61.6#  
 125 110.5 0.0 43.2#

Manual Integrations  
 APPROVED

Reviewed By :Yogesh Patel 11/19/2024  
 Supervised By :mohammad ahmed 11/19/2024



#25  
 Benzo(k)fluoranthene  
 Concen: 0.024 ng/ul  
 RT: 22.804 min Scan# 4681  
 Delta R.T. -0.012 min  
 Lab File: BM048750.D  
 Acq: 16 Nov 2024 20:05



Tgt Ion:252 Resp: 703  
 Ion Ratio Lower Upper  
 252 100  
 253 107.7 25.0 37.4#  
 125 118.0 17.4 26.0#

