

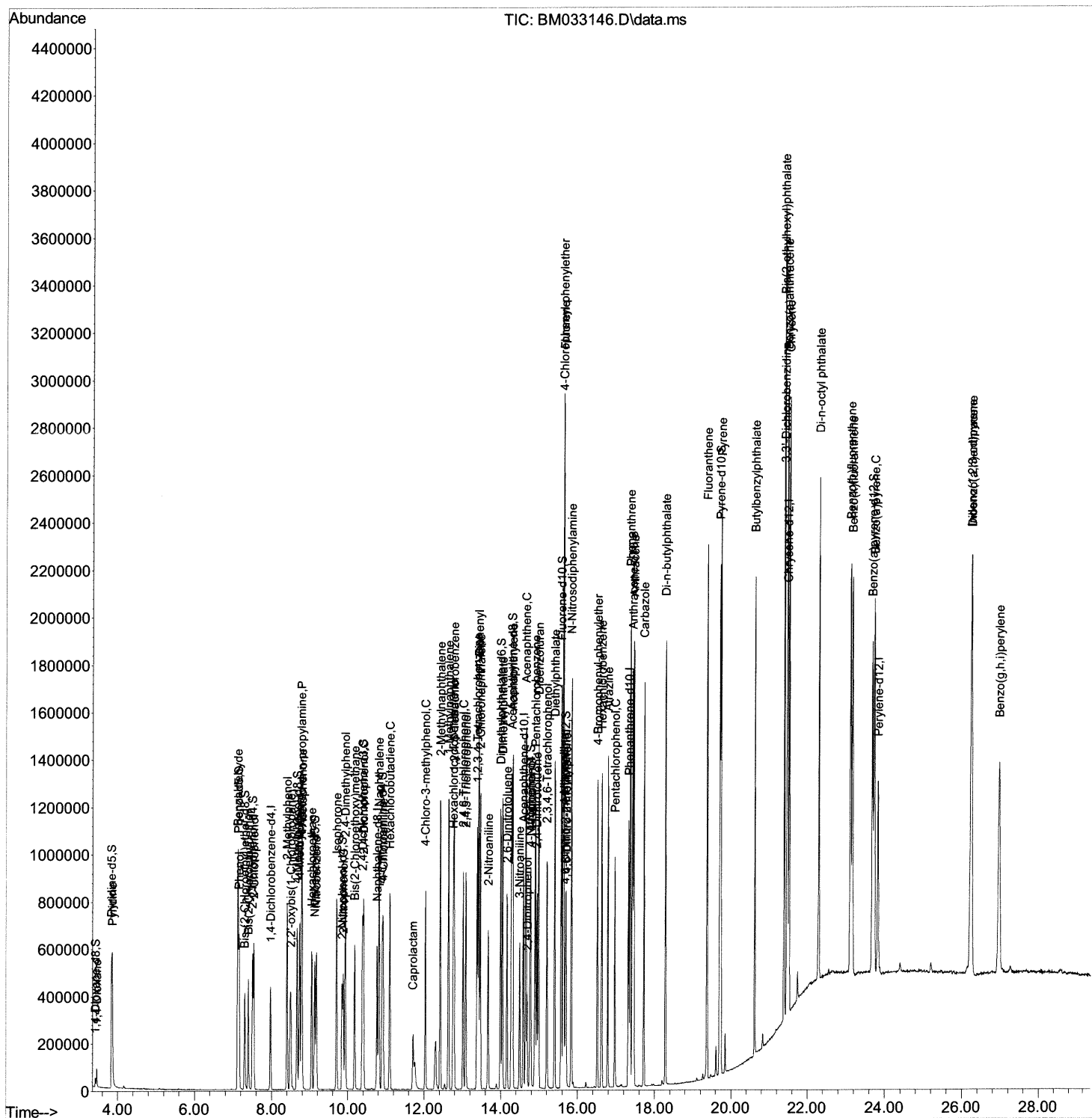
Data Path : Z:\svoasrv\HPCHEM1\BNA_M\Data\BM111721\
 Data File : BM033146.D
 Acq On : 18 Nov 2021 07:46
 Operator : CG/JU
 Sample : PB140814BS
 Misc :
 ALS Vial : 23 Sample Multiplier: 1

Instrument :
 BNA_M
 ClientSampleId :
 SLCS814

Manual IntegrationsAPPROVED

Quant Time: Nov 18 10:09:22 2021
 Quant Method : Z:\SVOASRV\HPCHEM1\BNA_M\METHODS\SFAM-EPA-BM111721.M
 Quant Title : SVOA CALIBRATION
 QLast Update : Wed Nov 17 14:14:11 2021
 Response via : Initial Calibration

Reviewed By :Jagrut Upadhyay 11/18/2021
 Supervised By :mohammad ahmed 11/26/2021



Quantitation Report (Qedit)

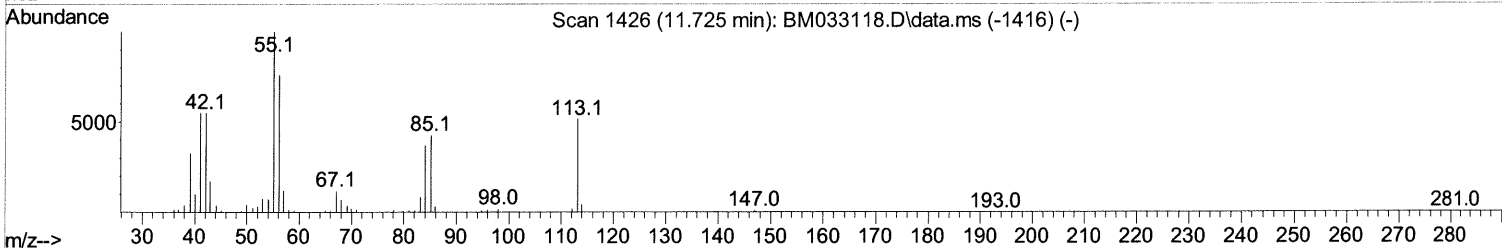
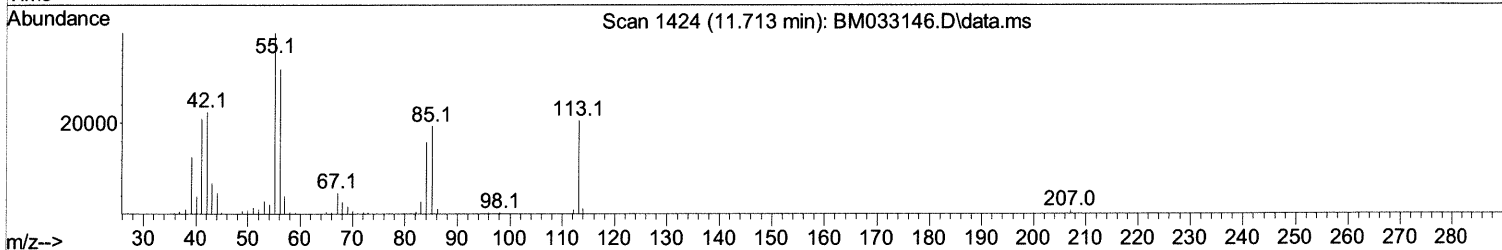
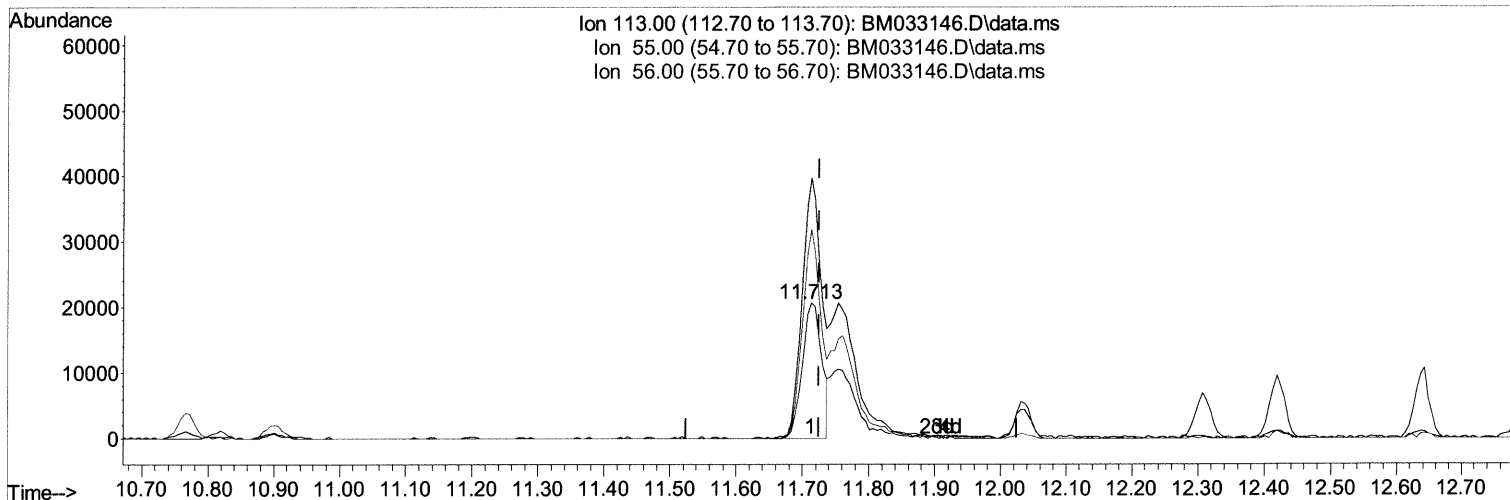
Data Path : Z:\svoasrv\HPCHEM1\BNA_M\Data\BM111721\
 Data File : BM033146.D
 Acq On : 18 Nov 2021 07:46
 Operator : CG/JU
 Sample : PB140814BS
 Misc :
 ALS Vial : 23 Sample Multiplier: 1

Instrument :
 BNA_M
 ClientSampleId :
 SLCS814

Manual IntegrationsAPPROVED

Quant Time: Nov 18 10:09:22 2021
 Quant Method : Z:\SVOASRV\HPCHEM1\BNA_M\METHODS\SFAM-EPA-BM111721.M
 Quant Title : SVOA CALIBRATION
 QLast Update : Wed Nov 17 14:14:11 2021
 Response via : Initial Calibration

Reviewed By :Jagrut Upadhyay 11/18/2021
 Supervised By :mohammad ahmed 11/26/2021



TIC: BM033146.D\data.ms

(34) Caprolactam

11.713min (-0.012) 19.05 ng/ul

response 41947

Ion	Exp%	Act%
113.00	100.00	100.00
55.00	196.60	192.74
56.00	147.80	154.54
0.00	0.00	0.00

Quantitation Report (Qedit)

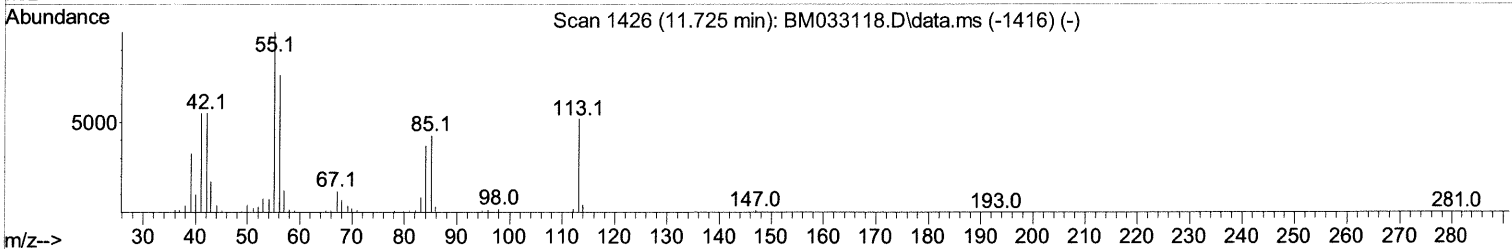
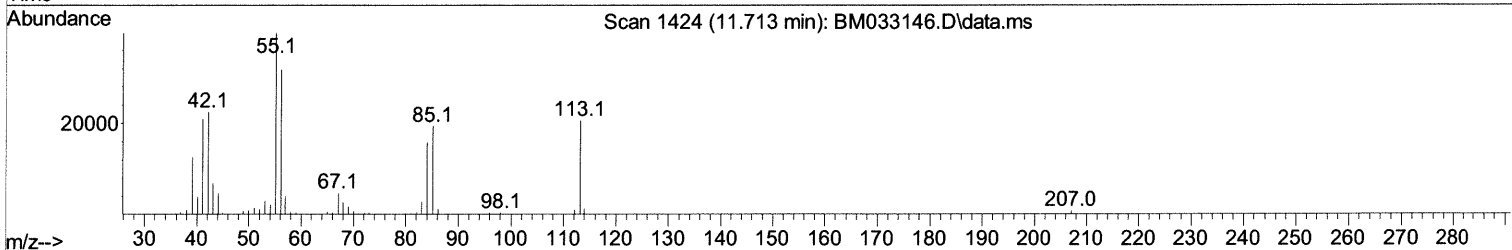
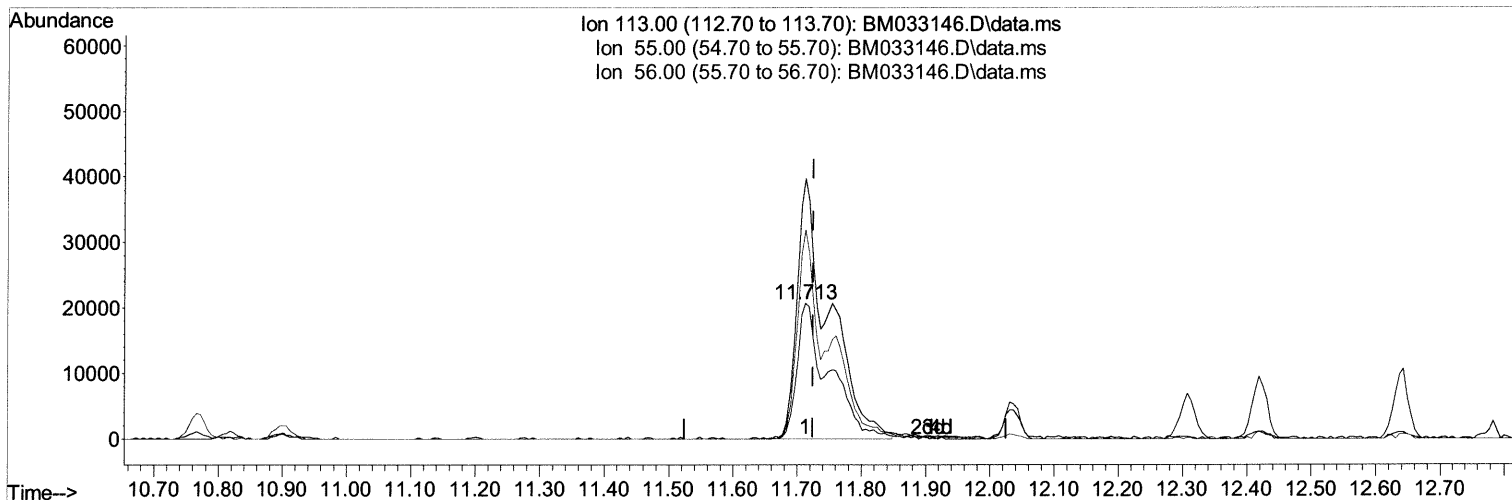
Data Path : Z:\svoasrv\HPCHEM1\BNA_M\Data\BM111721\
 Data File : BM033146.D
 Acq On : 18 Nov 2021 07:46
 Operator : CG/JU
 Sample : PB140814BS
 Misc :
 ALS Vial : 23 Sample Multiplier: 1

Instrument :
 BNA_M
 ClientSampleId :
 SLCS814

Manual IntegrationsAPPROVED

Quant Time: Nov 18 10:09:22 2021
 Quant Method : Z:\SVOASRV\HPCHEM1\BNA_M\METHODS\SFAM-EPA-BM111721.M
 Quant Title : SVOA CALIBRATION
 QLast Update : Wed Nov 17 14:14:11 2021
 Response via : Initial Calibration

Reviewed By :Jagrut Upadhyay 11/18/2021
 Supervised By :mohammad ahmed 11/26/2021



TIC: BM033146.D\data.ms

(34) Caprolactam

11.713min (-0.012) 32.43 ng/ul m 11/29/21JU

response 71418

Ion	Exp%	Act%
113.00	100.00	100.00
55.00	196.60	192.74
56.00	147.80	154.54
0.00	0.00	0.00

Data Path : Z:\svoasrv\HPCHEM1\BNA_M\Data\BM111721\
 Data File : BM033146.D
 Acq On : 18 Nov 2021 07:46
 Operator : CG/JU
 Sample : PB140814BS
 Misc :
 ALS Vial : 23 Sample Multiplier: 1

Instrument :
 BNA_M
 ClientSampleId :
 SLCS814

Manual IntegrationsAPPROVED

Reviewed By :Jagrut Upadhyay 11/18/2021
 Supervised By :mohammad ahmed 11/26/2021

Quant Time: Nov 18 10:09:22 2021
 Quant Method : Z:\SVOASRV\HPCHEM1\BNA_M\METHODS\SFAM-EPA-BM111721.M
 Quant Title : SVOA CALIBRATION
 QLast Update : Wed Nov 17 14:14:11 2021
 Response via : Initial Calibration

Compound	R.T.	QIon	Response	Conc Units	Dev(Min)
Internal Standards					
1) 1,4-Dichlorobenzene-d4	7.972	152	114197	20.000 ng/ul	0.00
20) Naphthalene-d8	10.766	136	479801	20.000 ng/ul	-0.01
38) Acenaphthene-d10	14.589	164	323003	20.000 ng/ul	0.00
64) Phenanthrene-d10	17.324	188	672269	20.000 ng/ul	0.00
79) Chrysene-d12	21.477	240	630184	20.000 ng/ul	0.00
88) Perylene-d12	23.824	264	614206	20.000 ng/ul	-0.01

System Monitoring Compounds					
3) 1,4-Dioxane-d8	3.419	96	17042	5.753 ng/uL	0.00
4) Pyridine-d5	3.837	84	235757	28.894 ng/ul	-0.01
7) Phenol-d5	7.125	99	300583	31.118 ng/ul	0.00
9) Bis-(2-Chloroethyl)eth...	7.301	67	191147	31.198 ng/ul	0.00
11) 2-Chlorophenol-d4	7.501	132	230981	31.571 ng/ul	0.00
15) 4-Methylphenol-d8	8.666	113	239021	31.884 ng/ul	0.00
21) Nitrobenzene-d5	9.131	128	113319	32.896 ng/ul	0.00
24) 2-Nitrophenol-d4	9.848	143	121999	35.362 ng/ul	-0.01
28) 2,4-Dichlorophenol-d3	10.383	165	246912	31.253 ng/ul	0.00
31) 4-Chloroaniline-d4	10.901	131	290144	27.615 ng/ul	0.00
46) Dimethylphthalate-d6	13.995	166	746924	31.527 ng/ul	-0.01
49) Acenaphthylene-d8	14.283	160	940016	30.798 ng/ul	0.00
54) 4-Nitrophenol-d4	14.771	143	124994	32.389 ng/ul	0.00
60) Fluorene-d10	15.577	176	662080	31.152 ng/ul	0.00
65) 4,6-Dinitro-2-methylph...	15.683	200	110648	35.022 ng/ul	-0.01
73) Anthracene-d10	17.418	188	1014838	31.316 ng/ul	-0.01
81) Pyrene-d10	19.700	212	1186004	31.847 ng/ul	0.00
92) Benzo(a)pyrene-d12	23.671	264	1056538	32.052 ng/ul	-0.01

Target Compounds				Qvalue	
2) 1,4-Dioxane	3.454	88	33502	11.139 ng/ul	98
5) Pyridine	3.860	79	238430	28.636 ng/ul	96
6) Benzaldehyde	7.113	77	183191	33.276 ng/ul	95
8) Phenol	7.148	94	307339	31.950 ng/ul	97
10) Bis(2-Chloroethyl)ether	7.389	93	245893	32.180 ng/ul	100
12) 2-Chlorophenol	7.531	128	240653	31.868 ng/ul	98
13) 2-Methylphenol	8.401	108	235755	31.994 ng/ul	94
14) 2,2'-oxybis(1-Chloropr...	8.495	45	389551	33.008 ng/ul	99
16) Acetophenone	8.795	105	374919	31.686 ng/ul	98
17) N-Nitroso-di-n-propyla...	8.778	70	212859	33.388 ng/ul	99
18) 4-Methylphenol	8.731	108	254383	32.931 ng/ul	99
19) Hexachloroethane	9.048	117	108615	31.573 ng/ul	94
22) Nitrobenzene	9.172	77	303025	31.521 ng/ul	100
23) Isophorone	9.701	82	566084	32.216 ng/ul	100
25) 2-Nitrophenol	9.883	139	129807	35.497 ng/ul	88
26) 2,4-Dimethylphenol	9.930	107	298885	31.107 ng/ul	98
27) Bis(2-Chloroethoxy)met...	10.178	93	334737	32.012 ng/ul	96
29) 2,4-Dichlorophenol	10.407	162	243797	31.823 ng/ul	97
30) Naphthalene	10.819	128	788822	30.918 ng/ul	99
32) 4-Chloroaniline	10.925	127	289822	27.306 ng/ul	99
33) Hexachlorobutadiene	11.095	225	177316	29.713 ng/ul	98
34) Caprolactam	11.713	113	71418m	32.426 ng/ul	99
35) 4-Chloro-3-methylphenol	12.036	107	271761	32.576 ng/ul	99

4/24/21JU

Data Path : Z:\svoasrv\HPCHEM1\BNA_M\Data\BM111721\
 Data File : BM033146.D
 Acq On : 18 Nov 2021 07:46
 Operator : CG/JU
 Sample : PB140814BS
 Misc :
 ALS Vial : 23 Sample Multiplier: 1

Instrument :
 BNA_M
 ClientSampleId :
 SLCS814

Manual IntegrationsAPPROVED

Reviewed By :Jagrut Upadhyay 11/18/2021
 Supervised By :mohammad ahmed 11/26/2021

Quant Time: Nov 18 10:09:22 2021
 Quant Method : Z:\SVOASRV\HPCHEM1\BNA_M\METHODS\SFAM-EPA-BM111721.M
 Quant Title : SVOA CALIBRATION
 QLast Update : Wed Nov 17 14:14:11 2021
 Response via : Initial Calibration

Compound	R.T.	QIon	Response	Conc	Units	Dev(Min)
36) 2-Methylnaphthalene	12.419	142	558117	31.571	ng/ul	100
37) 1-Methylnaphthalene	12.636	142	568468	31.501	ng/ul	100
39) 1,2,4,5-Tetrachloroben...	12.783	216	322943	30.052	ng/ul	99
40) Hexachlorocyclopentadiene	12.760	237	217354	28.744	ng/ul	100
41) 2,4,6-Trichlorophenol	13.019	196	203636	32.176	ng/ul	98
42) 2,4,5-Trichlorophenol	13.089	196	221296	32.609	ng/ul	99
43) 1,1'-Biphenyl	13.424	154	775261	30.805	ng/ul	100
44) 2-Chloronaphthalene	13.466	162	589888	30.394	ng/ul	99
45) 2-Nitroaniline	13.671	65	185474	36.257	ng/ul	97
47) Dimethylphthalate	14.042	163	744249	32.231	ng/ul	99
48) 2,6-Dinitrotoluene	14.166	165	146081	36.975	ng/ul#	89
50) Acenaphthylene	14.313	152	963674	31.113	ng/ul	99
51) 3-Nitroaniline	14.489	138	127804	32.105	ng/ul#	91
52) Acenaphthene	14.654	153	628210	31.092	ng/ul	98
53) 2,4-Dinitrophenol	14.689	184	71480	35.447	ng/ul	94
55) 4-Nitrophenol	14.783	109	121642	30.861	ng/ul	96
56) Dibenzofuran	14.983	168	911484	30.780	ng/ul	100
57) 2,4-Dinitrotoluene	14.942	165	205824	37.880	ng/ul#	99
58) 2,3,4,6-Tetrachlorophenol	15.207	232	185216	33.436	ng/ul	99
59) Diethylphthalate	15.401	149	754344	32.616	ng/ul	98
61) Fluorene	15.630	166	742364	31.539	ng/ul	100
62) 4-Chlorophenyl-phenyle...	15.624	204	387555	31.546	ng/ul	100
63) 4-Nitroaniline	15.648	138	141297	36.098	ng/ul	98
66) 4,6-Dinitro-2-methylph...	15.701	198	113822	35.945	ng/ul	98
67) N-Nitrosodiphenylamine	15.836	169	635209	32.126	ng/ul	99
68) 4-Bromophenyl-phenylether	16.518	248	238363	31.884	ng/ul	95
69) Hexachlorobenzene	16.624	284	271976	31.756	ng/ul	99
70) Atrazine	16.783	200	235844	30.869	ng/ul	100
71) Pentachlorophenol	16.965	266	160690	32.458	ng/ul	98
72) Phenanthrene	17.365	178	1194969	32.090	ng/ul	99
74) Anthracene	17.454	178	1186872	31.782	ng/ul	99
75) 1,2,3,4-Tetrachloroben...	13.389	216	325394	29.468	ng/uL	98
76) Pentachlorobenzene	14.901	250	323920	29.922	ng/uL	99
77) Carbazole	17.724	167	1057635	31.880	ng/ul	99
78) Di-n-butylphthalate	18.283	149	1269037	34.982	ng/ul	99
80) Fluoranthene	19.365	202	1403925	32.179	ng/ul	97
82) Pyrene	19.730	202	1427300	32.221	ng/ul	98
83) Butylbenzylphthalate	20.618	149	537130	35.490	ng/ul	97
84) 3,3'-Dichlorobenzidine	21.394	252	420479	29.617	ng/ul	98
85) Benzo(a)anthracene	21.459	228	1318844	32.357	ng/ul	100
86) Bis(2-ethylhexyl)phtha...	21.383	149	776885	36.215	ng/ul	100
87) Chrysene	21.512	228	1265523	31.794	ng/ul	98
89) Di-n-octyl phthalate	22.294	149	1296012	34.630	ng/ul	100
90) Benzo(b)fluoranthene	23.112	252	1364990	32.998	ng/ul	99
91) Benzo(k)fluoranthene	23.159	252	1224123	32.304	ng/ul	98
93) Benzo(a)pyrene	23.724	252	1264998	32.358	ng/ul	98
94) Indeno(1,2,3-cd)pyrene	26.229	276	1389078	31.908	ng/ul	96
95) Dibenzo(a,h)anthracene	26.241	278	1189586	31.939	ng/ul	98
96) Benzo(g,h,i)perylene	26.971	276	1201113	31.788	ng/ul	98

(#) = qualifier out of range (m) = manual integration (+) = signals summed