

(QT Reviewed)

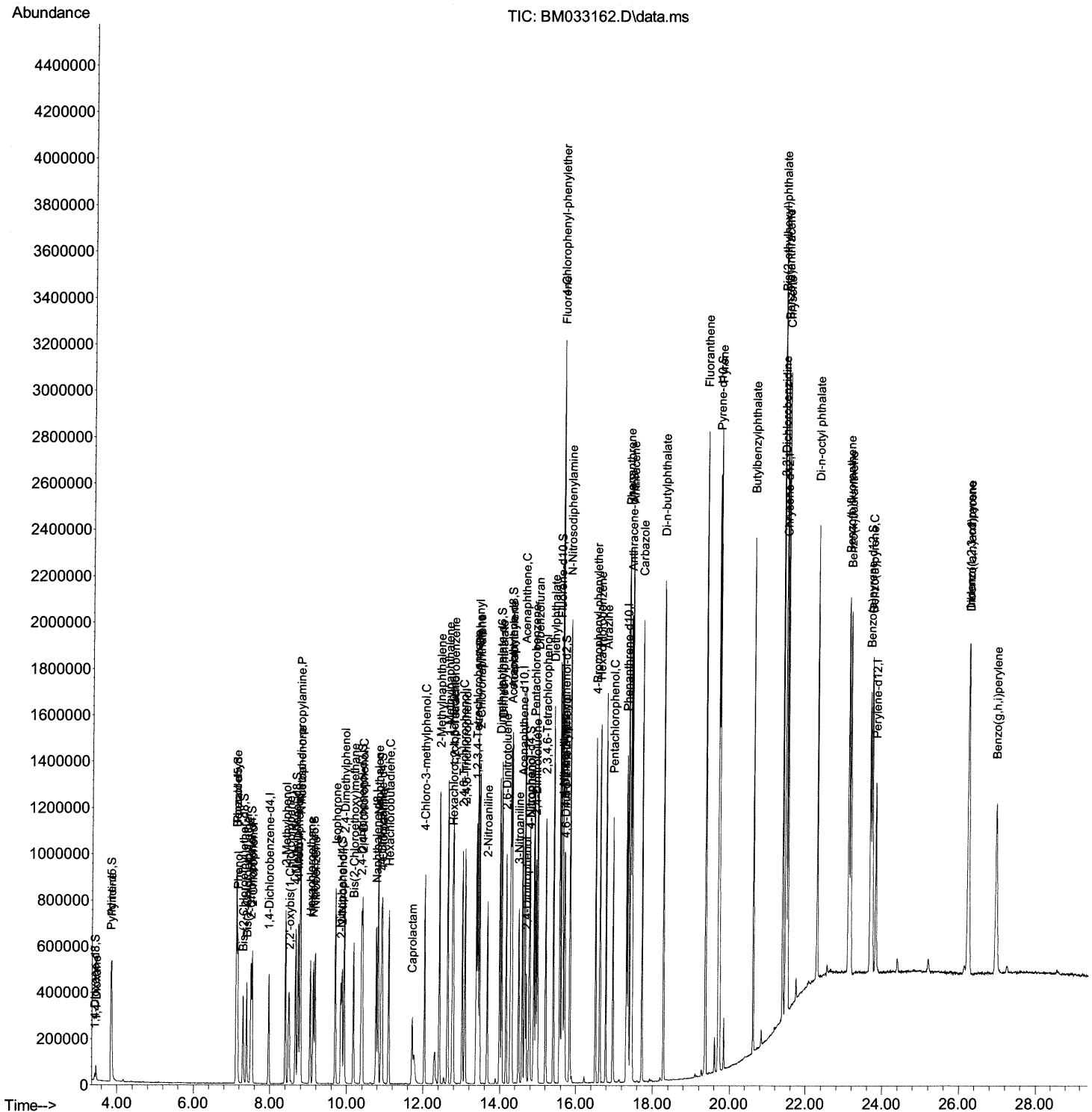
```
Data Path : Z:\svoasrv\HPCHEM1\BNA_M\Data\BM111721\  
Data File : BM033162.D  
Acq On    : 18 Nov 2021  19:47  
Operator  : CG/JU  
Sample    : PB140752BS  
Misc      :  
ALS Vial  : 37    Sample Multiplier: 1
```

**Instrument :**  
BNA\_M  
**ClientSampleId :**  
SLCS752

## Manual IntegrationsAPPROVED

Quant Time: Nov 19 00:51:01 2021  
Quant Method : Z:\SVOASRV\HPCHEM1\BNA\_M\METHODS\SFAM-EPA-BM111721.M  
Quant Title : SVOA CALIBRATION  
QLast Update : Wed Nov 17 14:14:11 2021  
Response via : Initial Calibration

Reviewed By :Jagrut Upadhyay 11/19/2021  
Supervised By :mohammad ahmed 11/26/2021



# Quantitation Report (Qedit)

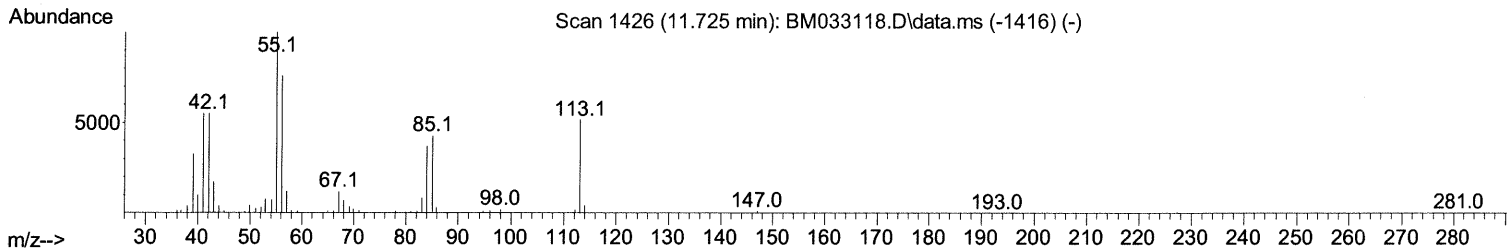
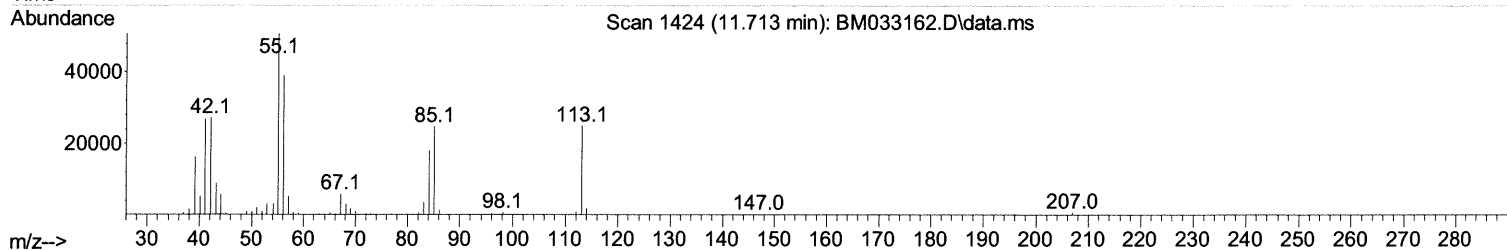
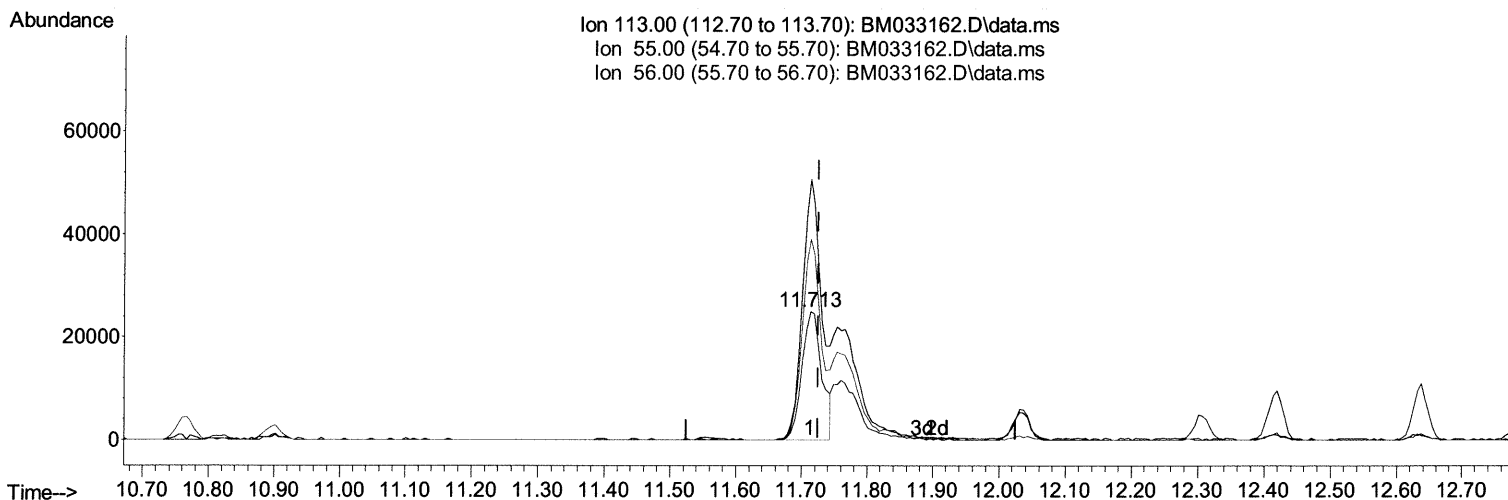
Data Path : Z:\svoasrv\HPCHEM1\BNA\_M\Data\BM111721\  
 Data File : BM033162.D  
 Acq On : 18 Nov 2021 19:47  
 Operator : CG/JU  
 Sample : PB140752BS  
 Misc :  
 ALS Vial : 37 Sample Multiplier: 1

Instrument :  
 BNA\_M  
 ClientSampleId :  
 SLCS752

Manual IntegrationsAPPROVED

Quant Time: Nov 19 00:51:01 2021  
 Quant Method : Z:\SVOASRV\HPCHEM1\BNA\_M\METHODS\SFAM-EPA-BM111721.M  
 Quant Title : SVOA CALIBRATION  
 QLast Update : Wed Nov 17 14:14:11 2021  
 Response via : Initial Calibration

Reviewed By :Jagrut Upadhyay 11/19/2021  
 Supervised By :mohammad ahmed 11/26/2021



TIC: BM033162.D\data.ms

## (34) Caprolactam

11.713min (-0.012) 21.46 ng/ul

response 52603

Ion	Exp%	Act%
113.00	100.00	100.00
55.00	196.60	203.05
56.00	147.80	156.56
0.00	0.00	0.00

# Quantitation Report (Qedit)

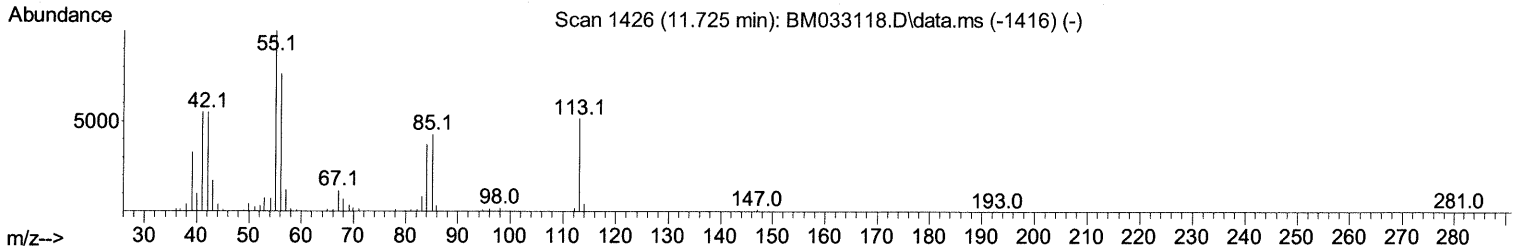
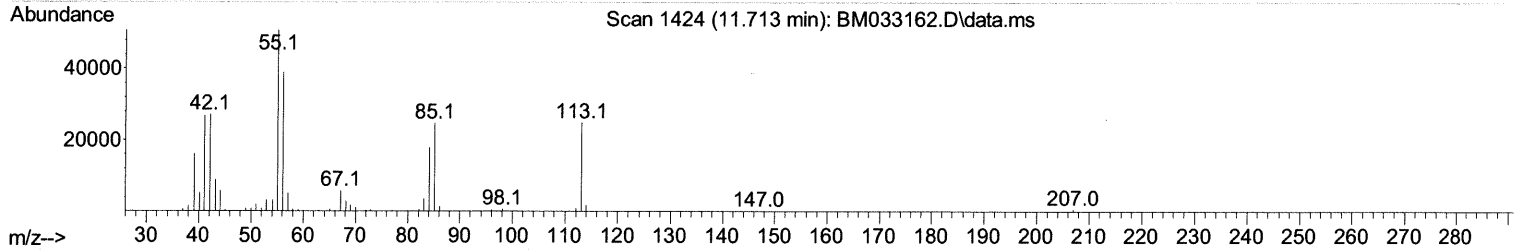
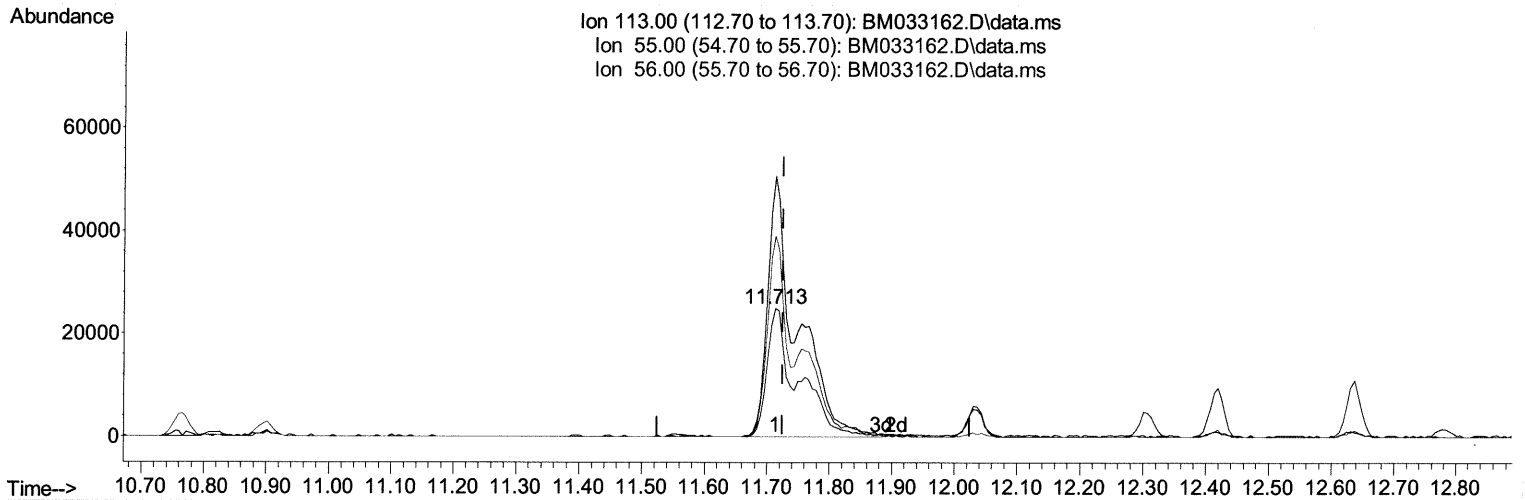
Data Path : Z:\svoasrv\HPCHEM1\BNA\_M\Data\BM111721\  
 Data File : BM033162.D  
 Acq On : 18 Nov 2021 19:47  
 Operator : CG/JU  
 Sample : PB140752BS  
 Misc :  
 ALS Vial : 37 Sample Multiplier: 1

Instrument :  
 BNA\_M  
 ClientSampleId :  
 SLCS752

Manual IntegrationsAPPROVED

Quant Time: Nov 19 00:51:01 2021  
 Quant Method : Z:\SVOASRV\HPCHEM1\BNA\_M\METHODS\SFAM-EPA-BM111721.M  
 Quant Title : SVOA CALIBRATION  
 QLast Update : Wed Nov 17 14:14:11 2021  
 Response via : Initial Calibration

Reviewed By :Jagrut Upadhyay 11/19/2021  
 Supervised By :mohammad ahmed 11/26/2021



TIC: BM033162.D\data.ms

## (34) Caprolactam

11.713min (-0.012) 34.68 ng/ul m 11/29/21JU

response 85000

Ion	Exp%	Act%
113.00	100.00	100.00
55.00	196.60	203.05
56.00	147.80	156.56
0.00	0.00	0.00

Data Path : Z:\svoasrv\HPCHEM1\BNA\_M\Data\BM111721\  
 Data File : BM033162.D  
 Acq On : 18 Nov 2021 19:47  
 Operator : CG/JU  
 Sample : PB140752BS  
 Misc :  
 ALS Vial : 37 Sample Multiplier: 1

Instrument :  
 BNA\_M  
 ClientSampleId :  
 SLCS752

Manual IntegrationsAPPROVED

Reviewed By :Jagrut Upadhyay 11/19/2021  
 Supervised By :mohammad ahmed 11/26/2021

Quant Time: Nov 19 00:51:01 2021  
 Quant Method : Z:\SVOASRV\HPCHEM1\BNA\_M\METHODS\SFAM-EPA-BM111721.M  
 Quant Title : SVOA CALIBRATION  
 QLast Update : Wed Nov 17 14:14:11 2021  
 Response via : Initial Calibration

Compound	R.T.	QIon	Response	Conc Units	Dev(Min)
Internal Standards					
1) 1,4-Dichlorobenzene-d4	7.966	152	118845	20.000 ng/ul	-0.01
20) Naphthalene-d8	10.766	136	533880	20.000 ng/ul	#-0.01
38) Acenaphthene-d10	14.584	164	391070	20.000 ng/ul	-0.01
64) Phenanthrene-d10	17.319	188	876252	20.000 ng/ul	#-0.01
79) Chrysene-d12	21.477	240	739437	20.000 ng/ul	0.00
88) Perylene-d12	23.824	264	591322	20.000 ng/ul	-0.01

System Monitoring Compounds					
3) 1,4-Dioxane-d8	3.420	96	14488	4.700 ng/uL	0.00
4) Pyridine-d5	3.837	84	209448	24.665 ng/ul	-0.01
7) Phenol-d5	7.119	99	285436	28.394 ng/ul	-0.01
9) Bis-(2-Chloroethyl)eth...	7.296	67	177215	27.793 ng/ul	-0.01
11) 2-Chlorophenol-d4	7.496	132	209237	27.481 ng/ul	-0.01
15) 4-Methylphenol-d8	8.666	113	232295	29.775 ng/ul	0.00
21) Nitrobenzene-d5	9.125	128	110847	28.919 ng/ul	-0.01
24) 2-Nitrophenol-d4	9.848	143	120227	31.319 ng/ul	-0.01
28) 2,4-Dichlorophenol-d3	10.378	165	244254	27.785 ng/ul	-0.01
31) 4-Chloroaniline-d4	10.901	131	309883	26.506 ng/ul	0.00
46) Dimethylphthalate-d6	13.995	166	833225	29.048 ng/ul	-0.01
49) Acenaphthylene-d8	14.284	160	1011142	27.362 ng/ul	0.00
54) 4-Nitrophenol-d4	14.772	143	148512	31.785 ng/ul	0.00
60) Fluorene-d10	15.572	176	736744	28.632 ng/ul	-0.01
65) 4,6-Dinitro-2-methylph...	15.689	200	130358	31.655 ng/ul	0.00
73) Anthracene-d10	17.424	188	1189285	28.156 ng/ul	0.00
81) Pyrene-d10	19.701	212	1379371	31.567 ng/ul	0.00
92) Benzo(a)pyrene-d12	23.671	264	923442	29.098 ng/ul	-0.01

Target Compounds				Qvalue	
2) 1,4-Dioxane	3.455	88	30325	9.689 ng/uL	92
5) Pyridine	3.855	79	215508	24.871 ng/ul	95
6) Benzaldehyde	7.113	77	177375	30.959 ng/ul	94
8) Phenol	7.149	94	295851	29.553 ng/ul	96
10) Bis(2-Chloroethyl)ether	7.390	93	226667	28.504 ng/ul	98
12) 2-Chlorophenol	7.531	128	222141	28.266 ng/ul	97
13) 2-Methylphenol	8.402	108	230456	30.052 ng/ul	99
14) 2,2'-oxybis(1-Chloropr...	8.496	45	369622	30.095 ng/ul	98
16) Acetophenone	8.790	105	374889	30.444 ng/ul	98
17) N-Nitroso-di-n-propyla...	8.778	70	215896	32.540 ng/ul	98
18) 4-Methylphenol	8.731	108	253786	31.569 ng/ul	99
19) Hexachloroethane	9.049	117	97730	27.298 ng/ul	98
22) Nitrobenzene	9.172	77	303274	28.351 ng/ul	97
23) Isophorone	9.701	82	593526	30.356 ng/ul	98
25) 2-Nitrophenol	9.878	139	129946	31.935 ng/ul	94
26) 2,4-Dimethylphenol	9.931	107	300428	28.101 ng/ul	97
27) Bis(2-Chloroethoxy)met...	10.172	93	332583	28.584 ng/ul	97
29) 2,4-Dichlorophenol	10.407	162	243860	28.607 ng/ul	97
30) Naphthalene	10.813	128	769837	27.117 ng/ul	99
32) 4-Chloroaniline	10.925	127	318977	27.008 ng/ul	98
33) Hexachlorobutadiene	11.095	225	163824	24.672 ng/ul	96
34) Caprolactam	11.713	113	85000m	34.683 ng/ul	> 11/19/21
35) 4-Chloro-3-methylphenol	12.037	107	297145	32.011 ng/ul	100

Data Path : Z:\svoasrv\HPCHEM1\BNA\_M\Data\BM111721\  
 Data File : BM033162.D  
 Acq On : 18 Nov 2021 19:47  
 Operator : CG/JU  
 Sample : PB140752BS  
 Misc :  
 ALS Vial : 37 Sample Multiplier: 1

Instrument :  
 BNA\_M  
 ClientSampleId :  
 SLCS752

Manual IntegrationsAPPROVED

Quant Time: Nov 19 00:51:01 2021  
 Quant Method : Z:\SVOASRV\HPCHEM1\BNA\_M\METHODS\SFAM-EPA-BM111721.M  
 Quant Title : SVOA CALIBRATION  
 QLast Update : Wed Nov 17 14:14:11 2021  
 Response via : Initial Calibration

Reviewed By :Jagrut Upadhyay 11/19/2021  
 Supervised By :mohammad ahmed 11/26/2021

Compound	R.T.	QIon	Response	Conc	Units	Dev(Min)
36) 2-Methylnaphthalene	12.419	142	569033	28.928	ng/ul	99
37) 1-Methylnaphthalene	12.637	142	586333	29.200	ng/ul	100
39) 1,2,4,5-Tetrachloroben...	12.778	216	323921	24.896	ng/ul	99
40) Hexachlorocyclopentadiene	12.760	237	200673	21.919	ng/ul	99
41) 2,4,6-Trichlorophenol	13.019	196	218560	28.523	ng/ul	95
42) 2,4,5-Trichlorophenol	13.089	196	243046	29.580	ng/ul	98
43) 1,1'-Biphenyl	13.425	154	818634	26.867	ng/ul	98
44) 2-Chloronaphthalene	13.466	162	619415	26.361	ng/ul	100
45) 2-Nitroaniline	13.666	65	217176	35.065	ng/ul	98
47) Dimethylphthalate	14.042	163	827900	29.613	ng/ul	99
48) 2,6-Dinitrotoluene	14.160	165	167598	35.038	ng/ul	93
50) Acenaphthylene	14.307	152	1046829	27.916	ng/ul	98
51) 3-Nitroaniline	14.489	138	159649	33.125	ng/ul#	92
52) Acenaphthene	14.648	153	690592	28.230	ng/ul	99
53) 2,4-Dinitrophenol	14.689	184	83942	34.382	ng/ul	92
55) 4-Nitrophenol	14.789	109	143858	30.145	ng/ul	97
56) Dibenzofuran	14.983	168	1027610	28.661	ng/ul	98
57) 2,4-Dinitrotoluene	14.942	165	244414	37.153	ng/ul	99
58) 2,3,4,6-Tetrachlorophenol	15.201	232	216878	32.337	ng/ul	96
59) Diethylphthalate	15.401	149	867289	30.972	ng/ul	99
61) Fluorene	15.630	166	836351	29.348	ng/ul	99
62) 4-Chlorophenyl-phenyle...	15.625	204	428198	28.788	ng/ul	99
63) 4-Nitroaniline	15.648	138	168007	35.451	ng/ul	97
66) 4,6-Dinitro-2-methylph...	15.701	198	134924	32.690	ng/ul	97
67) N-Nitrosodiphenylamine	15.836	169	747384	29.000	ng/ul	98
68) 4-Bromophenyl-phenylether	16.513	248	270758	27.786	ng/ul	95
69) Hexachlorobenzene	16.625	284	312683	28.010	ng/ul	98
70) Atrazine	16.783	200	280865	28.204	ng/ul	100
71) Pentachlorophenol	16.966	266	189593	29.382	ng/ul	98
72) Phenanthrene	17.366	178	1399797	28.839	ng/ul	100
74) Anthracene	17.454	178	1409599	28.959	ng/ul	99
75) 1,2,3,4-Tetrachloroben...	13.384	216	339017	23.555	ng/ul	97
76) Pentachlorobenzene	14.895	250	356058	25.234	ng/ul	99
77) Carbazole	17.724	167	1271940	29.415	ng/ul	99
78) Di-n-butylphthalate	18.277	149	1503166	31.790	ng/ul	100
80) Fluoranthene	19.366	202	1669613	32.615	ng/ul	97
82) Pyrene	19.730	202	1674924	32.224	ng/ul	97
83) Butylbenzylphthalate	20.613	149	618220	34.813	ng/ul	100
84) 3,3'-Dichlorobenzidine	21.395	252	441046	26.475	ng/ul	99
85) Benzo(a)anthracene	21.460	228	1417512	29.639	ng/ul	100
86) Bis(2-ethylhexyl)phtha...	21.383	149	824511	32.756	ng/ul	100
87) Chrysene	21.512	228	1349938	28.904	ng/ul	99
89) Di-n-octyl phthalate	22.295	149	1246297	34.590	ng/ul	100
90) Benzo(b)fluoranthene	23.112	252	1245467	31.273	ng/ul	100
91) Benzo(k)fluoranthene	23.159	252	1117631	30.635	ng/ul	98
93) Benzo(a)pyrene	23.718	252	1119531	29.745	ng/ul#	98
94) Indeno(1,2,3-cd)pyrene	26.230	276	1128583	26.927	ng/ul#	94
95) Dibenzo(a,h)anthracene	26.242	278	965230	26.919	ng/ul	99
96) Benzo(g,h,i)perylene	26.965	276	974191	26.780	ng/ul	98

(#) = qualifier out of range (m) = manual integration (+) = signals summed