

Data Path : Z:\SVOASRV\HPCHEM1\BNA M\DATA\BM111919\  
 Data File : BM023798.D  
 Acq On : 19 Nov 2019 15:50  
 Operator : JU  
 Sample : K5748-07  
 Misc :  
 ALS Vial : 10 Sample Multiplier: 1

Instrument :  
 BNA\_M  
 ClientSampleId :  
 BEH01

Integration Parameters: LSCINT.P

Integrator: RTE  
 Smoothing : OFF  
 Sampling : 1  
 Start Thrs: 0.2  
 Stop Thrs : 0

Filtering: 5  
 Min Area: 0.1 % of largest Peak  
 Max Peaks: 100  
 Peak Location: TOP

If leading or trailing edge < 100 prefer < Baseline drop else tangent >  
 Peak separation: 5

Method : Z:\SVOASRV\HPCHEM1\BNA\_M\METHODS\SOM-EPA-BM111119MA.M  
 Title : SVOA CALIBRATION

Signal : TIC

peak #	R.T. min	first scan	max scan	last scan	PK TY	peak height	corr. area	corr. % max.	% of total
1	3.063	27	30	38	rVB	75138	101780	1.16%	0.123%
2	3.687	132	136	143	rVB2	22706	42852	0.49%	0.052%
3	3.763	147	149	155	rVB3	18583	25888	0.30%	0.031%
4	6.710	644	650	661	rBV	340495	619879	7.07%	0.748%
5	6.869	671	677	693	rBV	1111012	1864259	21.27%	2.250%
6	7.057	701	709	722	rBV	1270974	2036594	23.24%	2.458%
7	7.516	781	787	799	rBV	1162642	1868773	21.32%	2.256%
8	8.233	903	909	923	rBV	950569	1546122	17.64%	1.866%
9	8.669	976	983	994	rBV	1380640	2282921	26.05%	2.756%
10	9.122	1052	1060	1069	rVB	29592	52663	0.60%	0.064%
11	9.386	1098	1105	1119	rBV	1149651	1846029	21.06%	2.228%
12	9.922	1189	1196	1209	rBV	1590475	2816983	32.14%	3.400%
13	10.292	1252	1259	1272	rBV	1589477	2632662	30.04%	3.178%
14	10.445	1277	1285	1299	rBV	71249	157184	1.79%	0.190%
15	11.898	1527	1532	1540	rVB2	22799	41309	0.47%	0.050%
16	13.021	1720	1723	1728	rVB4	9773	12555	0.14%	0.015%
17	13.598	1813	1821	1826	rBV	3187549	4241309	48.40%	5.120%
18	13.645	1826	1829	1837	rVB	136330	193725	2.21%	0.234%
19	13.863	1858	1866	1879	rBV	3412806	5205828	59.40%	6.284%
20	14.104	1904	1907	1912	rVB4	7988	11459	0.13%	0.014%
21	14.174	1912	1919	1930	rBV	2351972	3431707	39.16%	4.142%
22	14.410	1953	1959	1968	rBV2	127028	282603	3.22%	0.341%
23	14.621	1988	1995	2003	rVB10	19193	37251	0.43%	0.045%
24	15.004	2056	2060	2066	rBV7	9852	15107	0.17%	0.018%
25	15.062	2066	2070	2074	rVB5	10751	15874	0.18%	0.019%
26	15.174	2083	2089	2099	rBV	4524806	6526053	74.47%	7.878%
27	15.310	2106	2112	2126	rBV	1179949	1642253	18.74%	1.982%
28	15.415	2126	2130	2135	rVB	49964	70516	0.80%	0.085%
29	15.551	2148	2153	2162	rBV5	14141	27982	0.32%	0.034%
30	15.933	2212	2218	2220	rBV6	6948	11037	0.13%	0.013%
31	15.962	2220	2223	2229	rVB4	19502	28421	0.32%	0.034%
32	16.186	2257	2261	2265	rVB2	13518	15229	0.17%	0.018%
33	16.339	2284	2287	2291	rBV4	6984	9347	0.11%	0.011%
34	16.609	2330	2333	2337	rVB4	8098	10823	0.12%	0.013%

Data Path : Z:\SVOASRV\HPCHEM1\BNA\_M\DATA\BM111919\  
 Data File : BM023798.D  
 Acq On : 19 Nov 2019 15:50  
 Operator : JU  
 Sample : K5748-07  
 Misc :  
 ALS Vial : 10 Sample Multiplier: 1

Instrument :  
 BNA\_M  
 ClientSampleId :  
 BEH01

## Integration Parameters: LSCINT.P

Integrator: RTE  
 Smoothing : OFF  
 Sampling : 1  
 Start Thrs: 0.2  
 Stop Thrs : 0

Filtering: 5  
 Min Area: 0.1 % of largest Peak  
 Max Peaks: 100  
 Peak Location: TOP

If leading or trailing edge < 100 prefer < Baseline drop else tangent >  
 Peak separation: 5

Method : Z:\SVOASRV\HPCHEM1\BNA\_M\METHODS\SOM-EPA-BM111119MA.M  
 Title : SVOA CALIBRATION

35	16.721	2345	2352	2356	rBV7	13837	26056	0.30%	0.031%
36	16.927	2381	2387	2397	rVV	2826767	3870900	44.17%	4.673%
37	17.027	2397	2404	2418	rVV	5096853	7028760	80.20%	8.484%
38	17.145	2420	2424	2428	rVB6	18895	28092	0.32%	0.034%
39	17.621	2501	2505	2506	rBV3	9193	10499	0.12%	0.013%
40	17.851	2539	2544	2550	rBV	129925	191041	2.18%	0.231%
41	18.968	2730	2734	2741	rBV	54132	78195	0.89%	0.094%
42	19.145	2760	2764	2769	rBV5	54446	82562	0.94%	0.100%
43	19.215	2773	2776	2780	rVB	46884	60079	0.69%	0.073%
44	19.333	2790	2796	2808	rBV	6101137	8175243	93.29%	9.868%
45	20.874	3054	3058	3065	rBV2	353687	532171	6.07%	0.642%
46	21.133	3097	3102	3111	rBV	3488463	4473124	51.04%	5.400%
47	21.315	3130	3133	3137	rBV	273042	282725	3.23%	0.341%
48	21.738	3201	3205	3212	rBV	487242	624380	7.12%	0.754%
49	22.186	3277	3281	3287	rVB	720750	858853	9.80%	1.037%
50	22.668	3359	3363	3369	rBV	783088	1038767	11.85%	1.254%
51	23.150	3439	3445	3451	rBV	5214373	8763519	100.00%	10.579%
52	23.209	3452	3455	3461	rVV	770824	1144468	13.06%	1.381%
53	23.285	3462	3468	3477	rVB	2842091	4893972	55.84%	5.908%
54	23.827	3556	3560	3567	rVB	574561	954063	10.89%	1.152%

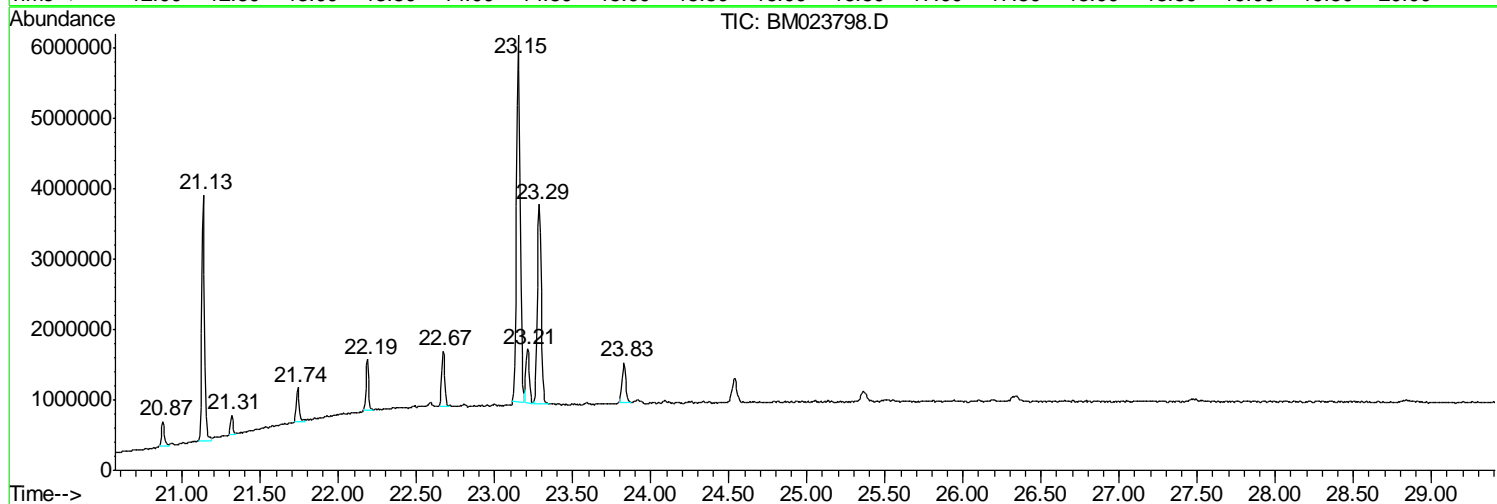
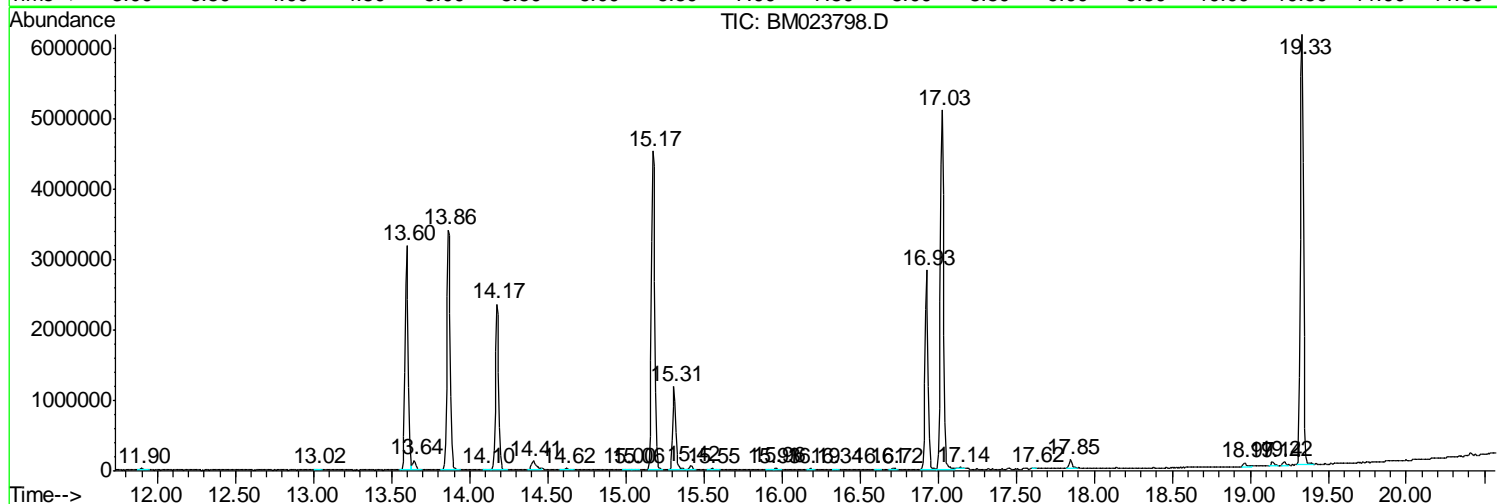
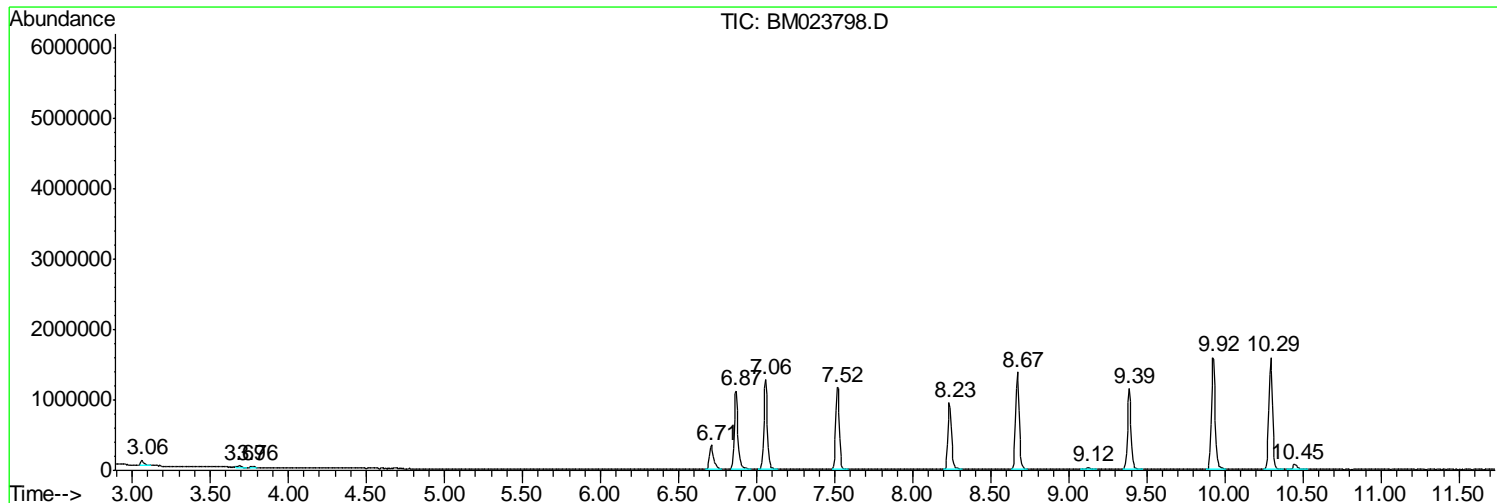
Sum of corrected areas: 82842446

Data Path : Z:\SVOASRV\HPCHEM1\BNA M\DATA\BM111919\  
 Data File : BM023798.D  
 Acq On : 19 Nov 2019 15:50  
 Operator : JU  
 Sample : K5748-07  
 Misc :  
 ALS Vial : 10 Sample Multiplier: 1

**Instrument :**  
 BNA\_M  
**ClientSampled :**  
 BEH01

Quant Method : Z:\SVOASRV\HPCHEM1\BNA\_M\METHODS\SOM-EPA-BM11119MA.M  
 Quant Title : SVOA CALIBRATION

TIC Library : C:\DATABASE\NIST11.L  
 TIC Integration Parameters: LSCINT.P



Data Path : Z:\SVOASRV\HPCHEM1\BNA M\DATA\BM111919\  
 Data File : BM023798.D  
 Acq On : 19 Nov 2019 15:50  
 Operator : JU  
 Sample : K5748-07  
 Misc :  
 ALS Vial : 10 Sample Multiplier: 1

Instrument :  
 BNA\_M  
 ClientSampleId :  
 BEH01

Quant Method : Z:\SVOASRV\HPCHEM1\BNA\_M\METHODS\SOM-EPA-BM11119MA.M  
 Quant Title : SVOA CALIBRATION

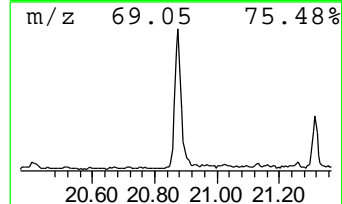
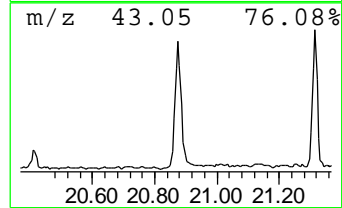
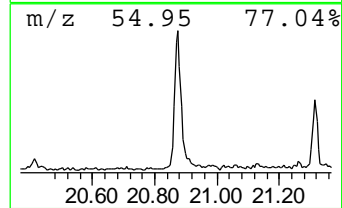
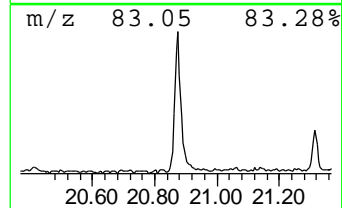
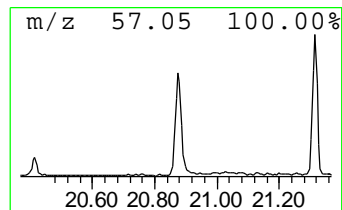
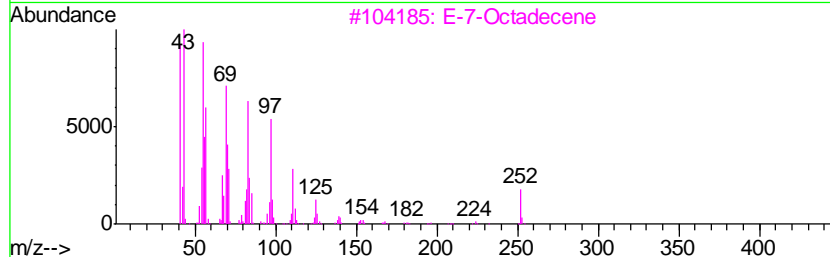
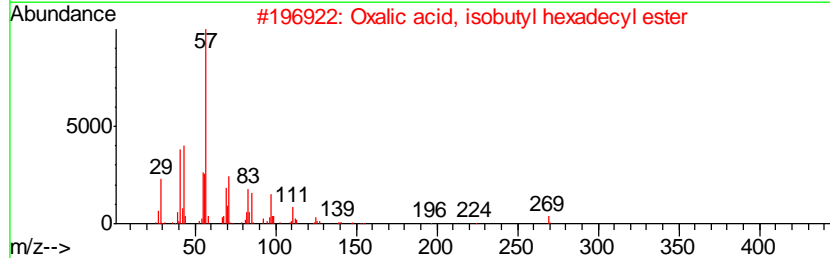
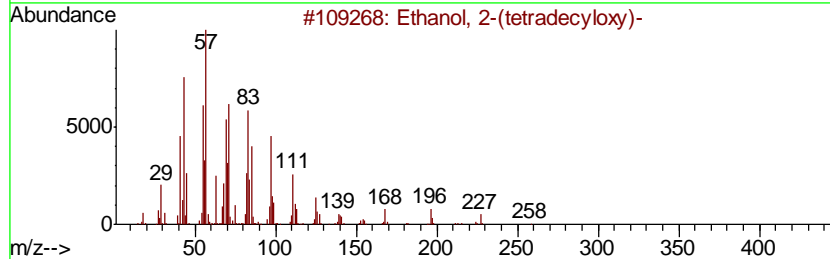
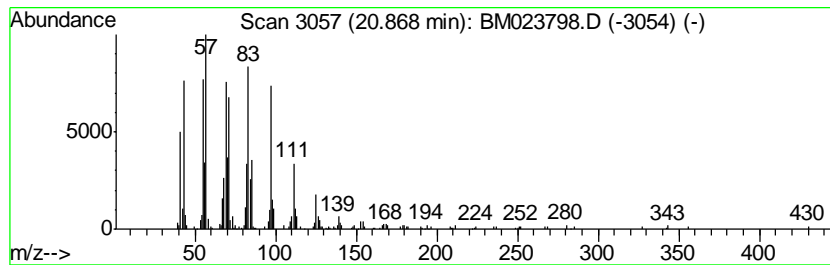
TIC Library : C:\DATABASE\NIST11.L  
 TIC Integration Parameters: LSCINT.P

\*\*\*\*\*  
 Peak Number 1 Ethanol, 2-(tetradecyloxy)- Concentration Rank 6

R.T.	EstConc	Area	Relative to ISTD	R.T.
20.87	2.38 ng/ul	532171	Chrysene-d12	21.13

Hit#	of	Tentative ID	MW	MolForm	CAS#	Qual
1	5	Ethanol, 2-(tetradecyloxy)-	258	C16H34O2	002136-70-1	91
2		Oxalic acid, isobutyl hexadecyl ...	370	C22H42O4	1000309-38-1	91
3		E-7-Octadecene	252	C18H36	1000130-92-0	91
4		Oxalic acid, hexadecyl propyl ester	356	C21H40O4	1000309-26-9	91
5		Oxalic acid, isobutyl octadecyl ...	398	C24H46O4	1000309-38-3	91



Data Path : Z:\SVOASRV\HPCHEM1\BNA M\DATA\BM111919\  
 Data File : BM023798.D  
 Acq On : 19 Nov 2019 15:50  
 Operator : JU  
 Sample : K5748-07  
 Misc :  
 ALS Vial : 10 Sample Multiplier: 1

Instrument :  
 BNA\_M  
 ClientSampled :  
 BEH01

Quant Method : Z:\SVOASRV\HPCHEM1\BNA\_M\METHODS\SOM-EPA-BM11119MA.M  
 Quant Title : SVOA CALIBRATION

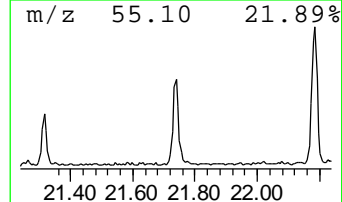
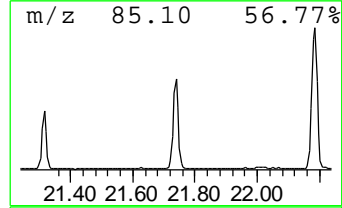
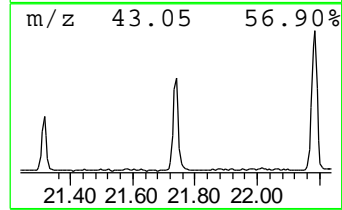
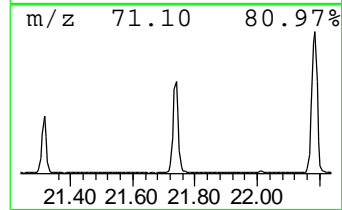
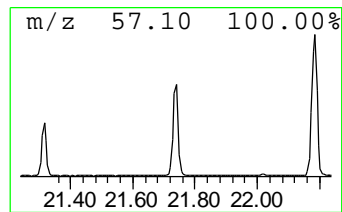
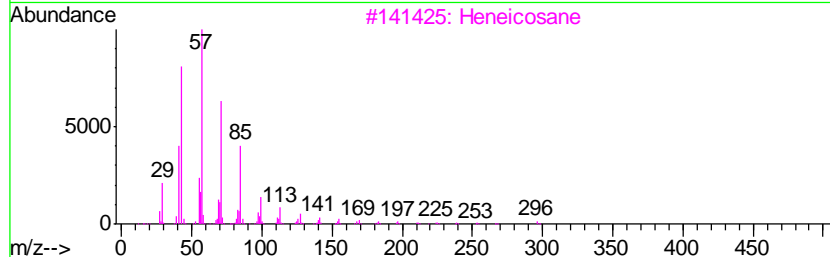
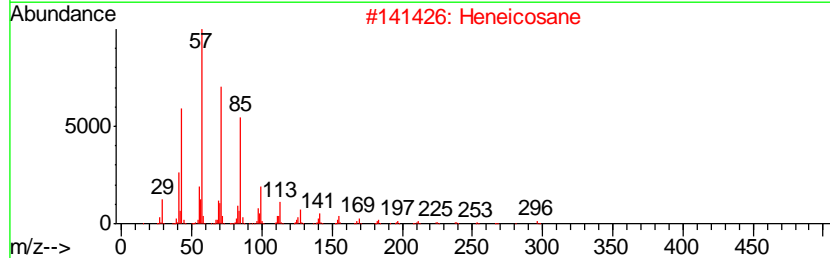
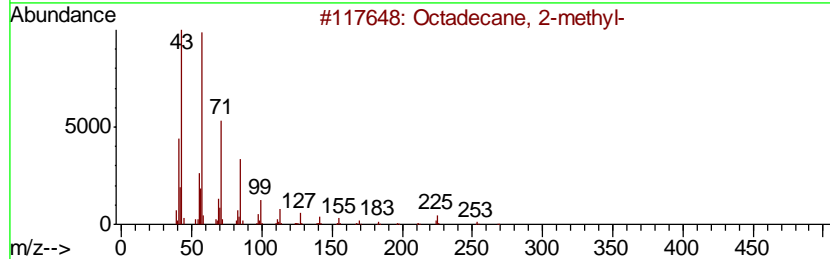
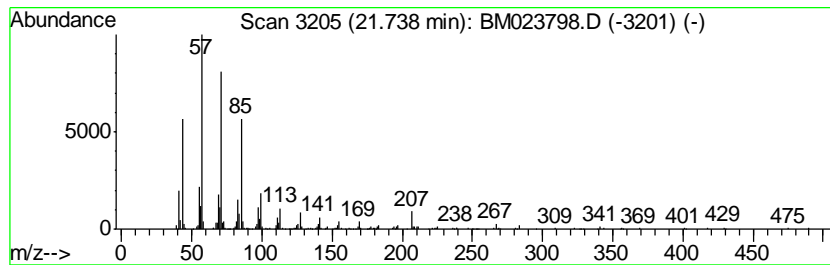
TIC Library : C:\DATABASE\NIST11.L  
 TIC Integration Parameters: LSCINT.P

\*\*\*\*\*  
 Peak Number 2 (DEL) Alkane: Straight-Chai... Concentration Rank 5

R.T.	EstConc	Area	Relative to ISTD	R.T.
21.74	2.79 ng/ul	624380	Chrysene-d12	21.13

Hit#	of	Tentative ID	MW	MolForm	CAS#	Qual
1	5	Octadecane, 2-methyl-	268	C19H40	001560-88-9	90
2		Heneicosane	296	C21H44	000629-94-7	90
3		Heneicosane	296	C21H44	000629-94-7	87
4		Heptadecane, 9-octyl-	352	C25H52	007225-64-1	87
5		Hexadecane	226	C16H34	000544-76-3	83



Data Path : Z:\SVOASRV\HPCHEM1\BNA M\DATA\BM111919\  
 Data File : BM023798.D  
 Acq On : 19 Nov 2019 15:50  
 Operator : JU  
 Sample : K5748-07  
 Misc :  
 ALS Vial : 10 Sample Multiplier: 1

Instrument :  
 BNA\_M  
 ClientSampleID :  
 BEH01

Quant Method : Z:\SVOASRV\HPCHEM1\BNA\_M\METHODS\SOM-EPA-BM11119MA.M  
 Quant Title : SVOA CALIBRATION

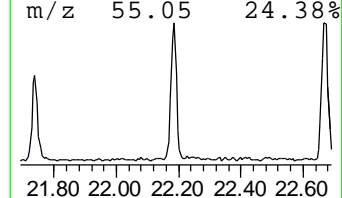
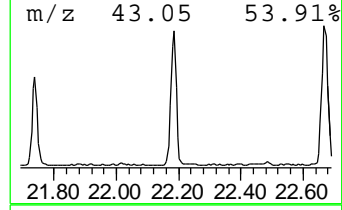
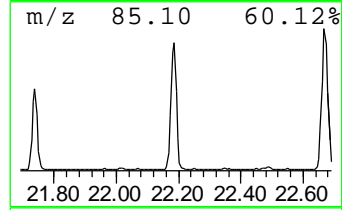
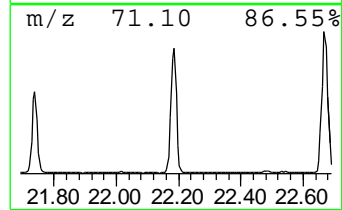
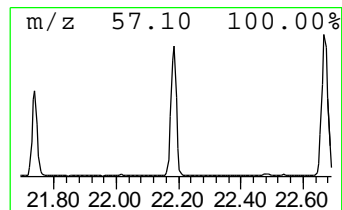
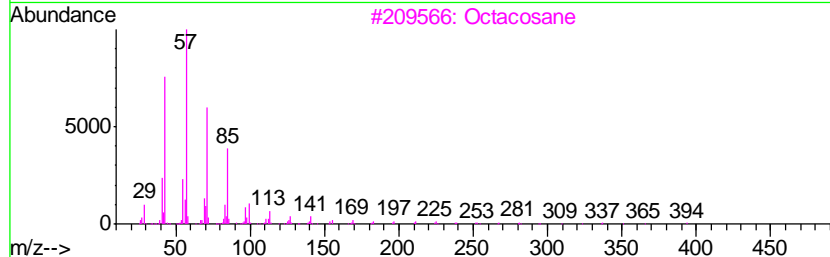
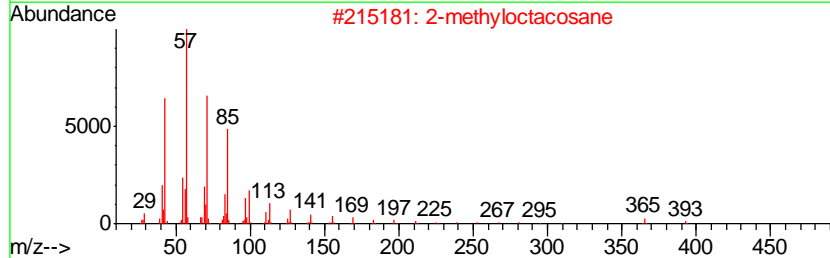
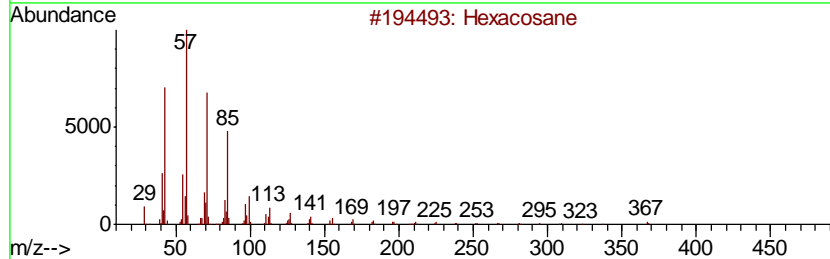
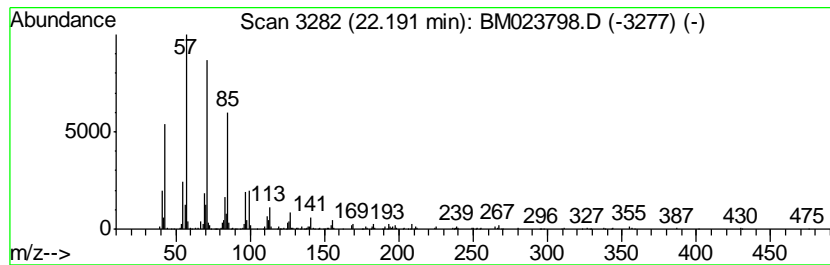
TIC Library : C:\DATABASE\NIST11.L  
 TIC Integration Parameters: LSCINT.P

\*\*\*\*\*  
 Peak Number 3 (DEL) Alkane: Straight-Chai... Concentration Rank 4

R.T.	EstConc	Area	Relative to ISTD	R.T.
22.19	3.84 ng/ul	858853	Chrysene-d12	21.13

Hit#	of	Tentative ID	MW	MolForm	CAS#	Qual
1	5	Hexacosane	366	C26H54	000630-01-3	94
2		2-methyloctacosane	408	C29H60	1000376-72-8	91
3		Octacosane	394	C28H58	000630-02-4	91
4		Heptadecane, 9-octyl-	352	C25H52	007225-64-1	91
5		Heneicosane	296	C21H44	000629-94-7	90



Data Path : Z:\SVOASRV\HPCHEM1\BNA M\DATA\BM111919\  
 Data File : BM023798.D  
 Acq On : 19 Nov 2019 15:50  
 Operator : JU  
 Sample : K5748-07  
 Misc :  
 ALS Vial : 10 Sample Multiplier: 1

Instrument :  
 BNA\_M  
 ClientSampled :  
 BEH01

Quant Method : Z:\SVOASRV\HPCHEM1\BNA\_M\METHODS\SOM-EPA-BM11119MA.M  
 Quant Title : SVOA CALIBRATION

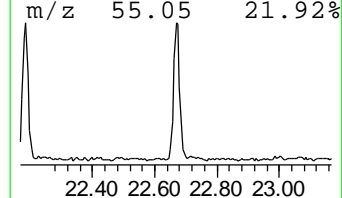
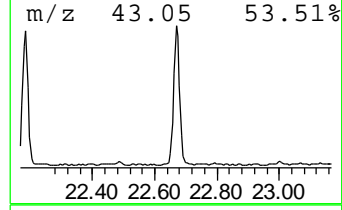
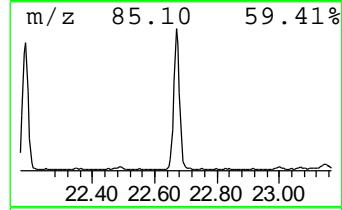
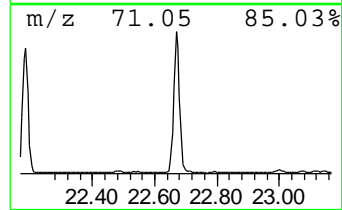
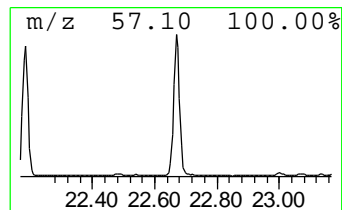
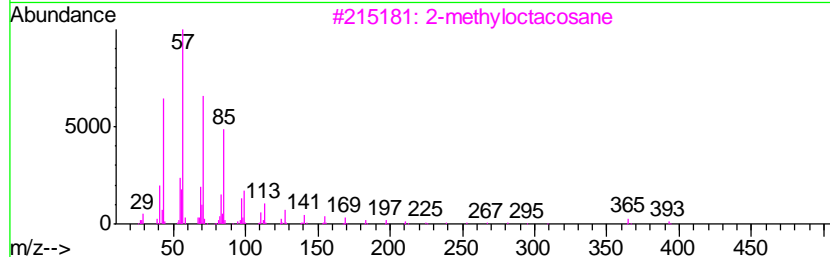
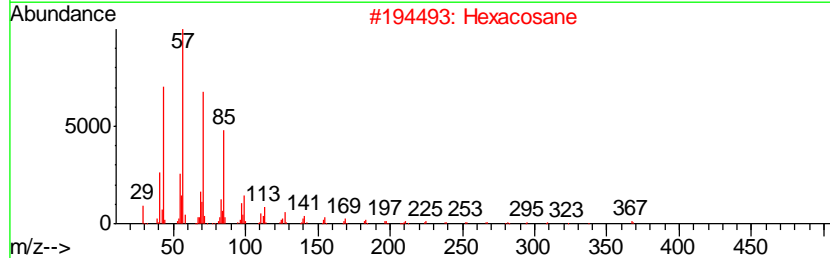
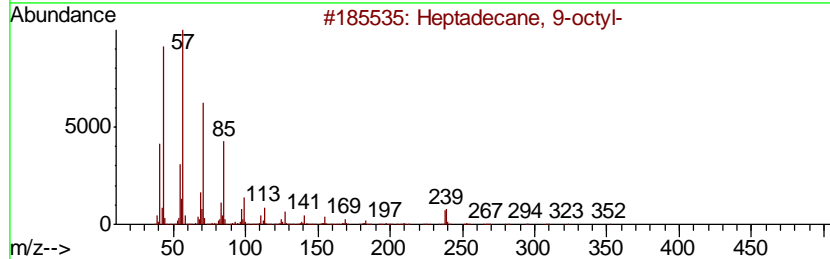
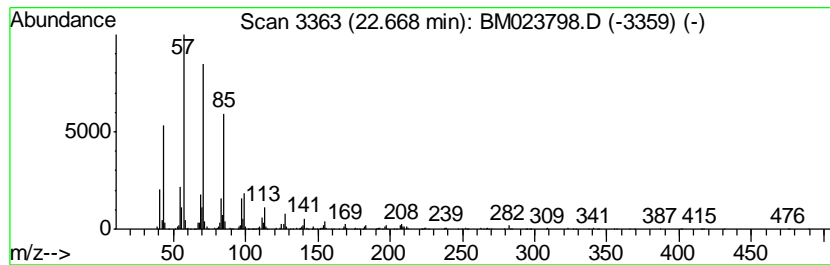
TIC Library : C:\DATABASE\NIST11.L  
 TIC Integration Parameters: LSCINT.P

\*\*\*\*\*  
 Peak Number 4 (DEL) Alkane: Straight-Chai... Concentration Rank 2

R.T.	EstConc	Area	Relative to ISTD	R.T.
22.67	4.25 ng/ul	1038770	Perylene-d12	23.29

Hit#	of	Tentative ID	MW	MolForm	CAS#	Qual
1	5	Heptadecane, 9-octyl-	352	C25H52	007225-64-1	91
2		Hexacosane	366	C26H54	000630-01-3	91
3		2-methyloctacosane	408	C29H60	1000376-72-8	91
4		Heneicosane	296	C21H44	000629-94-7	90
5		Pentadecane, 8-hexyl-	296	C21H44	013475-75-7	90



Data Path : Z:\SVOASRV\HPCHEM1\BNA M\DATA\BM111919\  
 Data File : BM023798.D  
 Acq On : 19 Nov 2019 15:50  
 Operator : JU  
 Sample : K5748-07  
 Misc :  
 ALS Vial : 10 Sample Multiplier: 1

Instrument :  
 BNA\_M  
 ClientSampleID :  
 BEH01

Quant Method : Z:\SVOASRV\HPCHEM1\BNA\_M\METHODS\SOM-EPA-BM11119MA.M  
 Quant Title : SVOA CALIBRATION

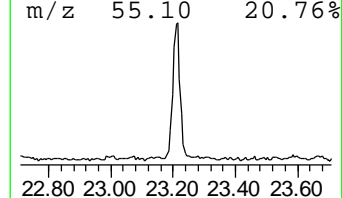
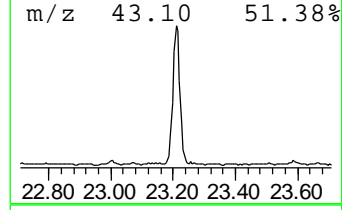
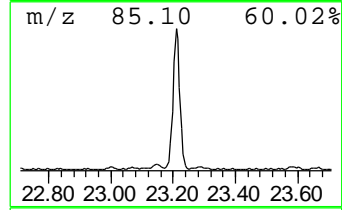
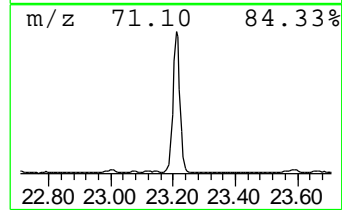
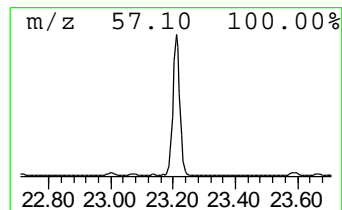
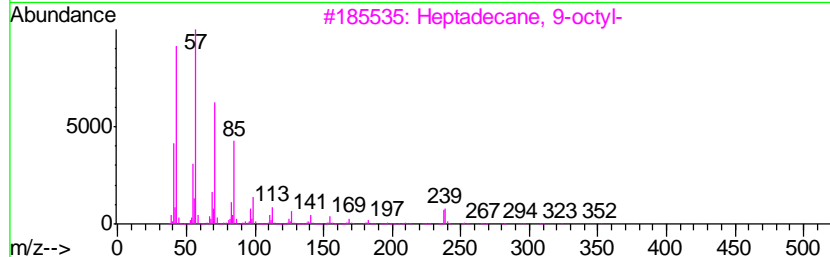
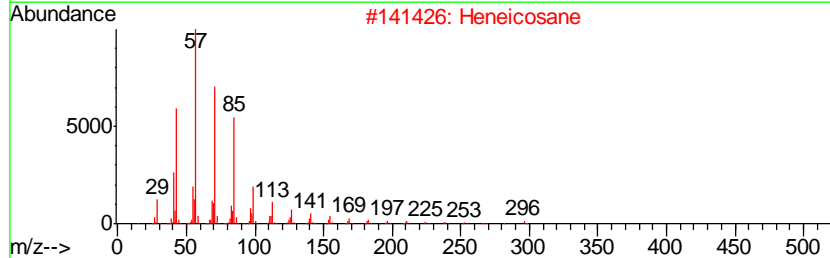
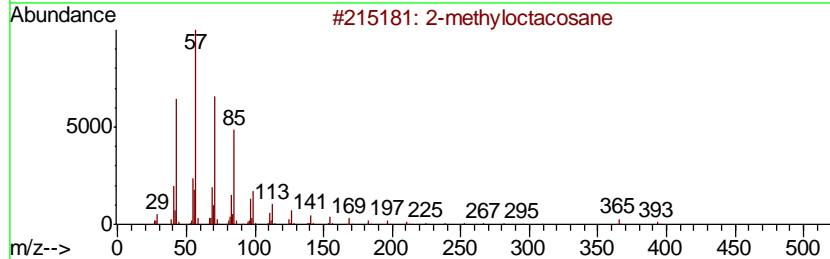
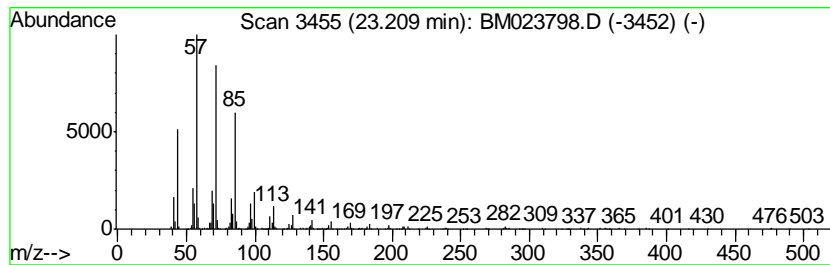
TIC Library : C:\DATABASE\NIST11.L  
 TIC Integration Parameters: LSCINT.P

\*\*\*\*\*  
 Peak Number 5 (DEL) Alkane: Straight-Chai... Concentration Rank 1

R.T.	EstConc	Area	Relative to ISTD	R.T.
23.21	4.68 ng/ul	1144470	Perylene-d12	23.29

Hit#	of	Tentative ID	MW	MolForm	CAS#	Qual
1	5	2-methyloctacosane	408	C29H60	1000376-72-8	91
2		Heneicosane	296	C21H44	000629-94-7	91
3		Heptadecane, 9-octyl-	352	C25H52	007225-64-1	91
4		Hexacosane	366	C26H54	000630-01-3	91
5		Heneicosane, 11-(1-ethylpropyl)-	366	C26H54	055282-11-6	91





Data Path : Z:\SVOASRV\HPCHEM1\BNA M\DATA\BM111919\  
 Data File : BM023798.D  
 Acq On : 19 Nov 2019 15:50  
 Operator : JU  
 Sample : K5748-07  
 Misc :  
 ALS Vial : 10 Sample Multiplier: 1

Instrument :  
 BNA\_M  
 ClientSampled :  
 BEH01

Quant Method : Z:\SVOASRV\HPCHEM1\BNA\_M\METHODS\SOM-EPA-BM11119MA.M  
 Quant Title : SVOA CALIBRATION

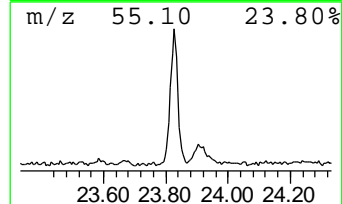
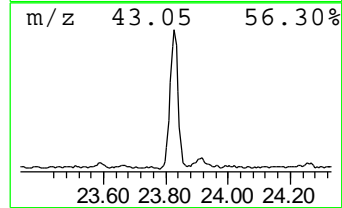
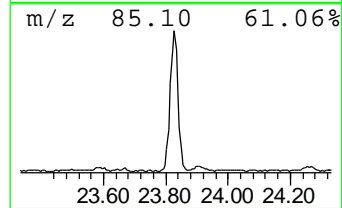
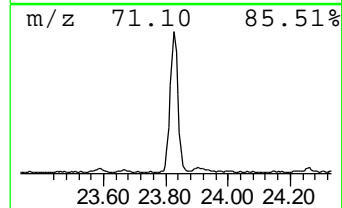
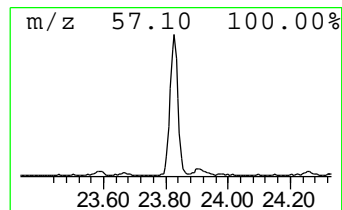
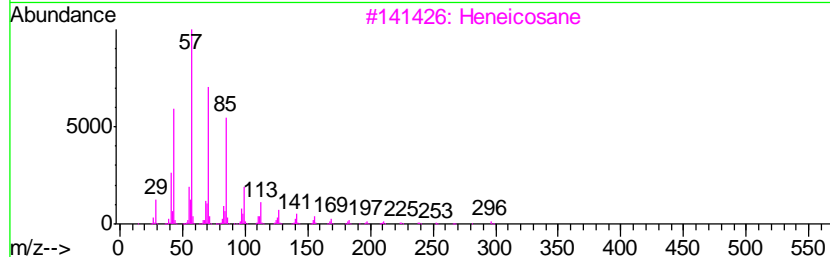
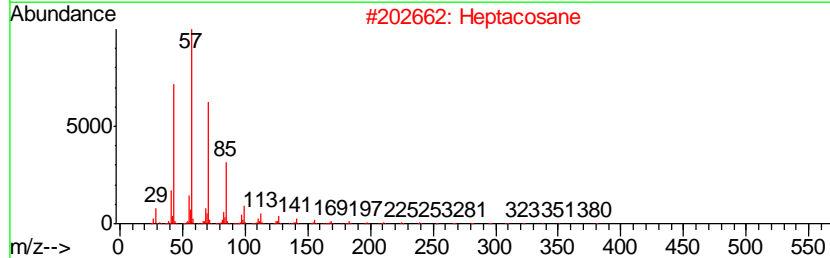
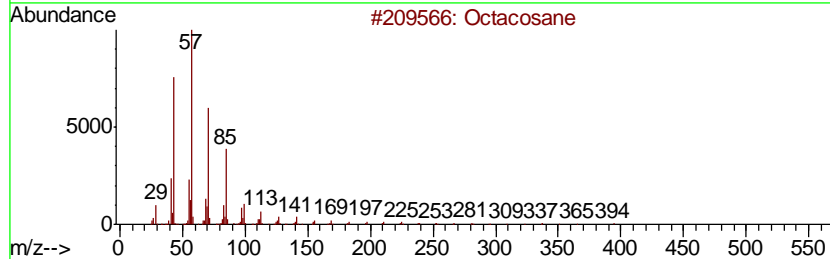
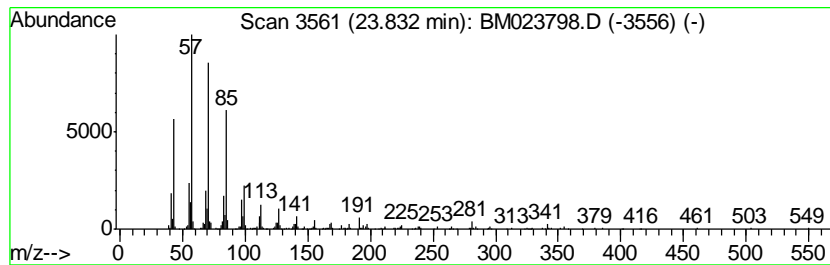
TIC Library : C:\DATABASE\NIST11.L  
 TIC Integration Parameters: LSCINT.P

\*\*\*\*\*  
 Peak Number 6 (DEL) Alkane: Straight-Chai... Concentration Rank 3

R.T.	EstConc	Area	Relative to ISTD	R.T.
23.83	3.90 ng/ul	954063	Perylene-d12	23.29

Hit#	of	Tentative ID	MW	MolForm	CAS#	Qual
1	5	Octacosane	394	C28H58	000630-02-4	91
2		Heptacosane	380	C27H56	000593-49-7	91
3		Heneicosane	296	C21H44	000629-94-7	91
4		2-methyloctacosane	408	C29H60	1000376-72-8	91
5		triacontane	422	C30H62	000638-68-6	91



Data Path : Z:\SVOASRV\HPCHEM1\BNA\_M\DATA\BM111919\  
Data File : BM023798.D  
Acq On : 19 Nov 2019 15:50  
Operator : JU  
Sample : K5748-07  
Misc :  
ALS Vial : 10 Sample Multiplier: 1

Instrument :  
BNA\_M  
ClientSampleId :  
BEH01

Quant Method : Z:\SVOASRV\HPCHEM1\BNA\_M\METHODS\SOM-EPA-BM111119MA.M  
Quant Title : SVOA CALIBRATION

TIC Library : C:\DATABASE\NIST11.L  
TIC Integration Parameters: LSCINT.P

TIC Top Hit name	RT	EstConc	Units	Response	--Internal Standard--			
					#	RT	Resp	Conc
Ethanol, 2-(tetra...	20.87	2.4	ng/ul	532171	5	21.13	4473120	20.0
(DEL) Alkane: Str...	21.74	2.8	ng/ul	624380	5	21.13	4473120	20.0
(DEL) Alkane: Str...	22.19	3.8	ng/ul	858853	5	21.13	4473120	20.0
(DEL) Alkane: Str...	22.67	4.3	ng/ul	1038770	6	23.29	4893970	20.0
(DEL) Alkane: Str...	23.21	4.7	ng/ul	1144470	6	23.29	4893970	20.0
(DEL) Alkane: Str...	23.83	3.9	ng/ul	954063	6	23.29	4893970	20.0