

Data Path : Z:\svoasrv\HPCHEM1\BNA_M\Data\BM112023\
 Data File : BM042933.D
 Acq On : 20 Nov 2023 18:06
 Operator : MA/JU
 Sample : PB156867BS
 Misc :
 ALS Vial : 14 Sample Multiplier: 1

Instrument :
 BNA_M
 ClientSampleId :
 SLCS867

Quant Time: Nov 20 22:57:57 2023
 Quant Method : Z:\svoasrv\HPCHEM1\BNA_M\Methods\SFAM-EPA-BM11323.MA.M
 Quant Title : SVOA CALIBRATION
 QLast Update : Sat Nov 18 22:06:09 2023
 Response via : Initial Calibration

Compound	R.T.	QIon	Response	Conc	Units	Dev(Min)
Internal Standards						
1) 1,4-Dichlorobenzene-d4	7.810	152	38195	20.000	ng/ul	0.00
20) Naphthalene-d8	10.622	136	150413	20.000	ng/ul	# 0.00
38) Acenaphthene-d10	14.469	164	98790	20.000	ng/ul	0.00
64) Phenanthrene-d10	17.221	188	219194	20.000	ng/ul	0.00
79) Chrysene-d12	21.409	240	256301	20.000	ng/ul	0.00
88) Perylene-d12	23.768	264	280072	20.000	ng/ul	0.00
System Monitoring Compounds						
3) 1,4-Dioxane-d8	3.169	96	5646	4.638	ng/uL	0.00
4) Pyridine-d5	3.605	84	84770	27.997	ng/ul	0.00
7) Phenol-d5	6.981	99	107405	28.893	ng/ul	0.00
9) Bis-(2-Chloroethyl)eth...	7.157	67	76886	29.435	ng/ul	0.00
11) 2-Chlorophenol-d4	7.334	132	78980	27.535	ng/ul	0.00
15) 4-Methylphenol-d8	8.534	113	79810	27.267	ng/ul	0.00
21) Nitrobenzene-d5	9.010	128	37252	28.248	ng/ul	0.00
24) 2-Nitrophenol-d4	9.722	143	42598	27.613	ng/ul	0.00
28) 2,4-Dichlorophenol-d3	10.245	165	84104	29.320	ng/ul	0.00
31) 4-Chloroaniline-d4	10.798	131	96868	26.597	ng/ul	0.00
46) Dimethylphthalate-d6	13.892	166	250546	26.797	ng/ul	0.00
49) Acenaphthylene-d8	14.169	160	282247	28.214	ng/ul	0.00
54) 4-Nitrophenol-d4	14.722	143	30195	28.585	ng/ul	0.00
60) Fluorene-d10	15.463	176	220492	28.478	ng/ul	0.00
65) 4,6-Dinitro-2-methylph...	15.616	200	26382	15.890	ng/ul	0.00
73) Anthracene-d10	17.321	188	349148	28.422	ng/ul	0.00
81) Pyrene-d10	19.621	212	451489	26.901	ng/ul	0.00
92) Benzo(a)pyrene-d12	23.615	264	486635	29.048	ng/ul	0.00
Target Compounds						
2) 1,4-Dioxane	3.205	88	13165	10.156	ng/uL#	87
5) Pyridine	3.628	79	98133	29.805	ng/ul	99
6) Benzaldehyde	6.975	77	74023	34.707	ng/ul	92
8) Phenol	7.010	94	114987	31.098	ng/ul	97
10) Bis(2-Chloroethyl)ether	7.257	93	89600	29.335	ng/ul	92
12) 2-Chlorophenol	7.363	128	84764	29.694	ng/ul	91
13) 2-Methylphenol	8.263	108	80263	29.109	ng/ul	97
14) 2,2'-oxybis(1-Chloropr...	8.322	45	108656	19.542	ng/ul	95
16) Acetophenone	8.663	105	139530	28.351	ng/ul	95
17) N-Nitroso-di-n-propyla...	8.634	70	86410	28.842	ng/ul	96
18) 4-Methylphenol	8.598	108	88122	29.395	ng/ul	93
19) Hexachloroethane	8.863	117	43587	27.396	ng/ul	95
22) Nitrobenzene	9.057	77	125176	31.406	ng/ul	97
23) Isophorone	9.563	82	235819	29.706	ng/ul	97
25) 2-Nitrophenol	9.757	139	46673	29.778	ng/ul	98
26) 2,4-Dimethylphenol	9.798	107	83398	24.869	ng/ul	97
27) Bis(2-Chloroethoxy)met...	10.051	93	120696	30.088	ng/ul	95
29) 2,4-Dichlorophenol	10.275	162	84275	31.031	ng/ul	97
30) Naphthalene	10.675	128	274773	29.159	ng/ul	100
32) 4-Chloroaniline	10.822	127	100072	28.640	ng/ul	98
33) Hexachlorobutadiene	10.892	225	69570	29.000	ng/ul	96
34) Caprolactam	11.651	113	17773	22.071	ng/ul	94
35) 4-Chloro-3-methylphenol	11.933	107	88856	30.533	ng/ul	96
36) 2-Methylnaphthalene	12.286	142	183113	28.994	ng/ul	98

Data Path : Z:\svoasrv\HPCHEM1\BNA_M\Data\BM112023\
 Data File : BM042933.D
 Acq On : 20 Nov 2023 18:06
 Operator : MA/JU
 Sample : PB156867BS
 Misc :
 ALS Vial : 14 Sample Multiplier: 1

Instrument :
 BNA_M
 ClientSampleId :
 SLCS867

Quant Time: Nov 20 22:57:57 2023
 Quant Method : Z:\svoasrv\HPCHEM1\BNA_M\Methods\SFAM-EPA-BM111323.MA.M
 Quant Title : SVOA CALIBRATION
 QLast Update : Sat Nov 18 22:06:09 2023
 Response via : Initial Calibration

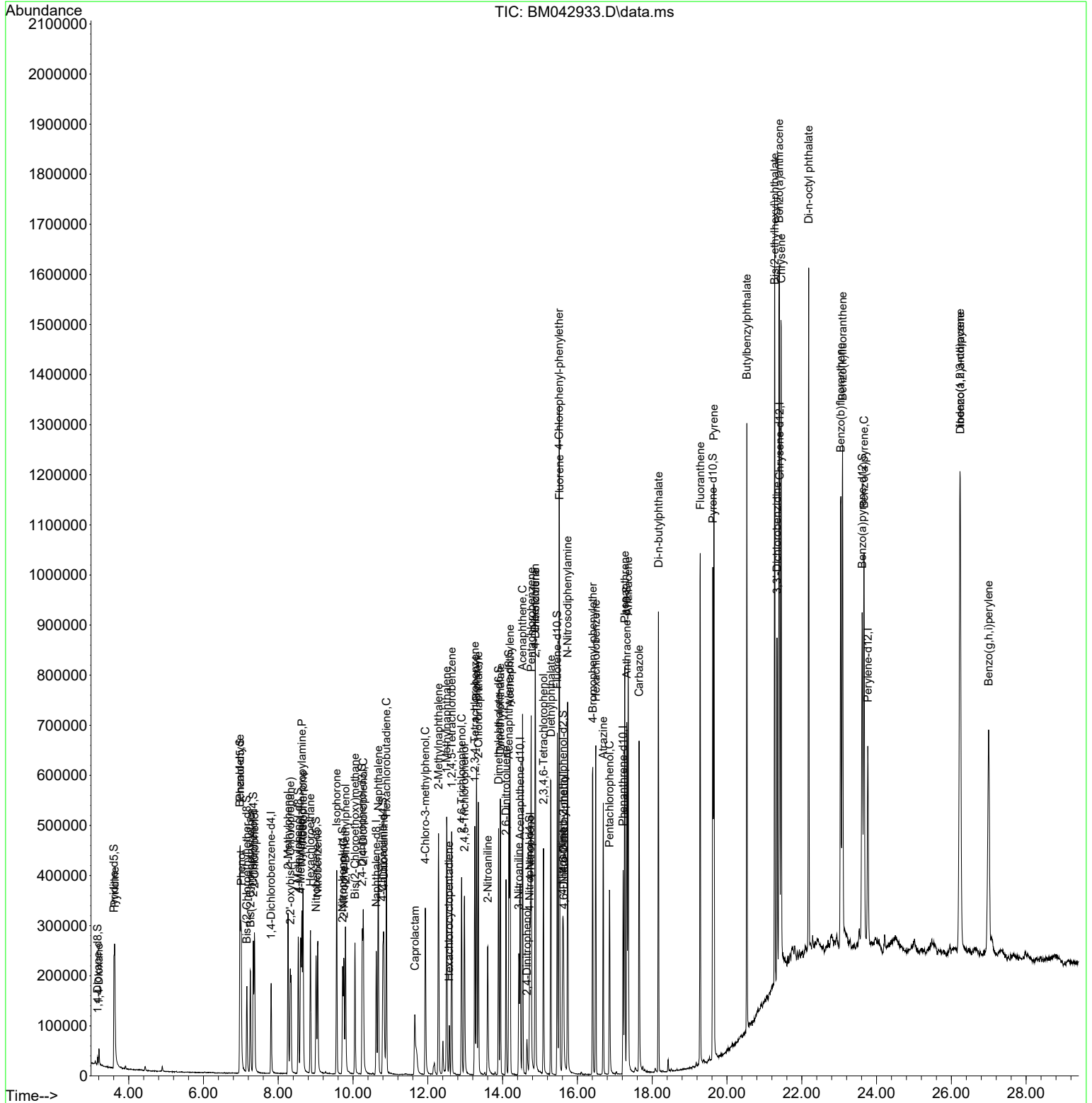
Compound	R.T.	QIon	Response	Conc	Units	Dev(Min)
37) 1-Methylnaphthalene	12.504	142	186861	28.141	ng/ul	97
39) 1,2,4,5-Tetrachloroben...	12.639	216	121147	31.269	ng/ul	97
40) Hexachlorocyclopentadiene	12.575	237	20810	11.345	ng/ul	96
41) 2,4,6-Trichlorophenol	12.904	196	73635	31.115	ng/ul	98
42) 2,4,5-Trichlorophenol	12.980	196	76753	33.588	ng/ul	98
43) 1,1'-Biphenyl	13.304	154	249531	30.288	ng/ul	98
44) 2-Chloronaphthalene	13.351	162	202619	30.571	ng/ul	97
45) 2-Nitroaniline	13.604	65	75906	35.117	ng/ul	90
47) Dimethylphthalate	13.939	163	265122	29.113	ng/ul	99
48) 2,6-Dinitrotoluene	14.092	165	50655	29.608	ng/ul	94
50) Acenaphthylene	14.198	152	341788	30.491	ng/ul	99
51) 3-Nitroaniline	14.433	138	44118	31.535	ng/ul	97
52) Acenaphthene	14.533	153	231669	30.559	ng/ul	96
53) 2,4-Dinitrophenol	14.651	184	11988	14.092	ng/ul	84
55) 4-Nitrophenol	14.739	109	51450	30.951	ng/ul	94
56) Dibenzofuran	14.869	168	318316	30.252	ng/ul	99
57) 2,4-Dinitrotoluene	14.880	165	78520	31.261	ng/ul	92
58) 2,3,4,6-Tetrachlorophenol	15.092	232	72473	30.552	ng/ul#	98
59) Diethylphthalate	15.292	149	272077	28.492	ng/ul	98
61) Fluorene	15.521	166	280841	31.437	ng/ul	99
62) 4-Chlorophenyl-phenyle...	15.510	204	151037	31.371	ng/ul	99
63) 4-Nitroaniline	15.604	138	43240	33.902	ng/ul	84
66) 4,6-Dinitro-2-methylph...	15.633	198	27763	16.424	ng/ul	90
67) N-Nitrosodiphenylamine	15.739	169	215205	31.304	ng/ul	99
68) 4-Bromophenyl-phenylether	16.410	248	90321	30.957	ng/ul	92
69) Hexachlorobenzene	16.492	284	108595	30.446	ng/ul	96
70) Atrazine	16.692	200	78312	29.573	ng/ul	96
71) Pentachlorophenol	16.863	266	58662	28.561	ng/ul	99
72) Phenanthrene	17.268	178	425807	31.095	ng/ul	99
74) Anthracene	17.357	178	425661	30.904	ng/ul	98
75) 1,2,3,4-Tetrachloroben...	13.257	216	121140	31.255	ng/uL	99
76) Pentachlorobenzene	14.763	250	131447	32.322	ng/uL	99
77) Carbazole	17.651	167	359527	31.612	ng/ul	100
78) Di-n-butylphthalate	18.168	149	501039	30.127	ng/ul	99
80) Fluoranthene	19.286	202	541110	28.276	ng/ul	100
82) Pyrene	19.651	202	585657	28.863	ng/ul	99
83) Butylbenzylphthalate	20.533	149	245196	28.292	ng/ul	92
84) 3,3'-Dichlorobenzidine	21.339	252	187042	28.514	ng/ul	99
85) Benzo(a)anthracene	21.398	228	620235	30.828	ng/ul	99
86) Bis(2-ethylhexyl)phtha...	21.274	149	391467	29.771	ng/ul	99
87) Chrysene	21.450	228	585501	30.007	ng/ul	100
89) Di-n-octyl phthalate	22.186	149	671341	29.674	ng/ul	100
90) Benzo(b)fluoranthene	23.044	252	617091	32.286	ng/ul	99
91) Benzo(k)fluoranthene	23.092	252	612196	30.089	ng/ul	99
93) Benzo(a)pyrene	23.668	252	577102	30.986	ng/ul	99
94) Indeno(1,2,3-cd)pyrene	26.233	276	740915	32.009	ng/ul	98
95) Dibenzo(a,h)anthracene	26.238	278	617045	32.154	ng/ul	98
96) Benzo(g,h,i)perylene	26.997	276	566244	30.807	ng/ul	99

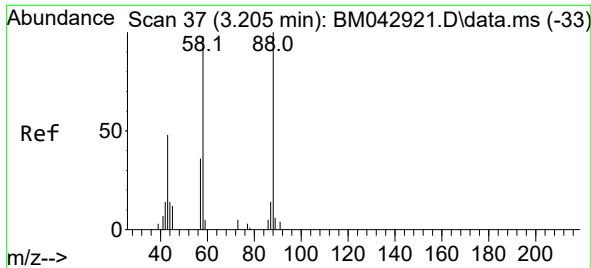
(#) = qualifier out of range (m) = manual integration (+) = signals summed

Data Path : Z:\svoasrv\HPCHEM1\BNA_M\Data\BM112023\
 Data File : BM042933.D
 Acq On : 20 Nov 2023 18:06
 Operator : MA/JU
 Sample : PB156867BS
 Misc :
 ALS Vial : 14 Sample Multiplier: 1

Instrument :
 BNA_M
 ClientSampleId :
 SLCS867

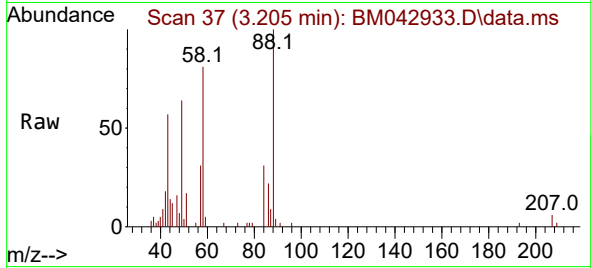
Quant Time: Nov 20 22:57:57 2023
 Quant Method : Z:\svoasrv\HPCHEM1\BNA_M\Methods\SFAM-EPA-BM111323.MA.M
 Quant Title : SVOA CALIBRATION
 QLast Update : Sat Nov 18 22:06:09 2023
 Response via : Initial Calibration



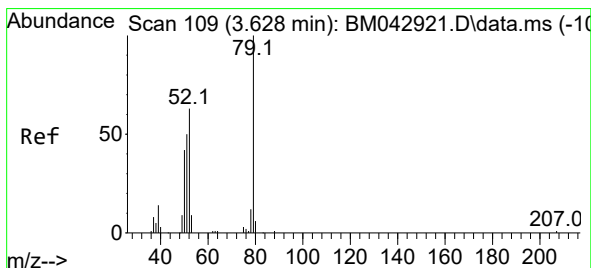
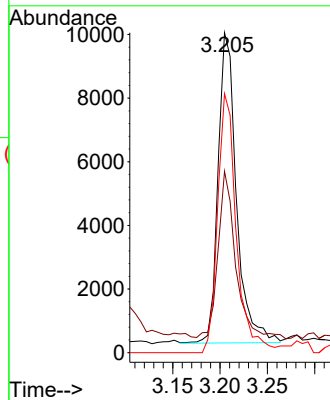
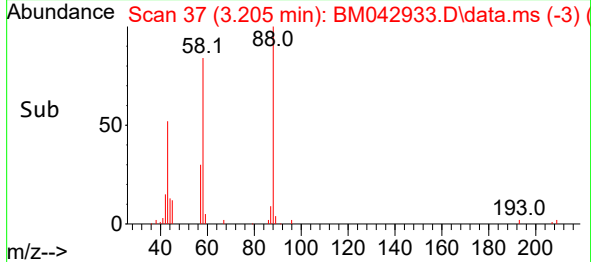


#2
 1,4-Dioxane
 Concen: 10.156 ng/uL
 RT: 3.205 min Scan# 31
 Delta R.T. 0.000 min
 Lab File: BM042933.D
 Acq: 20 Nov 2023 18:06

Instrument :
 BNA_M
 ClientSampleId :
 SLCS867

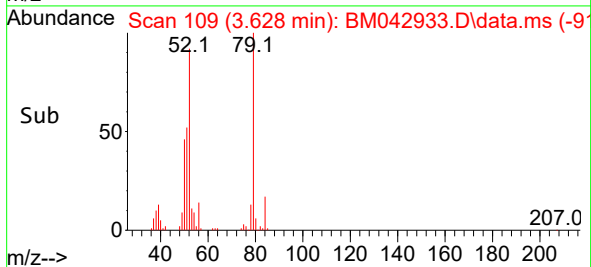
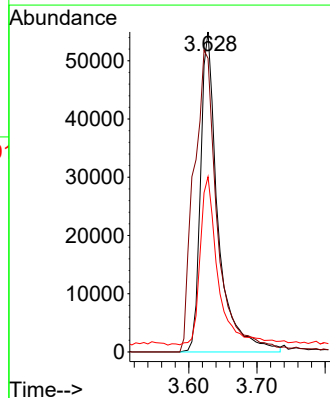
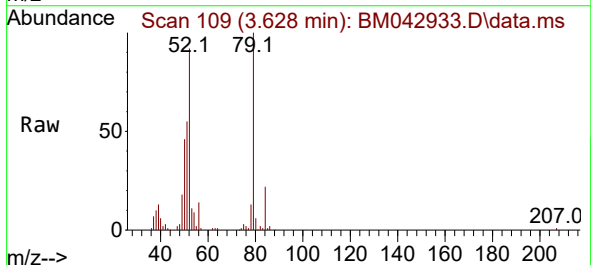


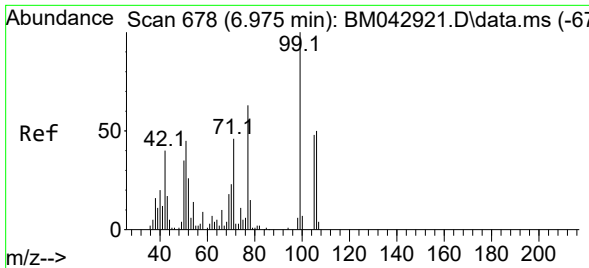
Tgt Ion: 88 Resp: 13165
 Ion Ratio Lower Upper
 88 100
 43 56.7 34.3 51.5#
 58 80.9 59.4 89.0



#5
 Pyridine
 Concen: 29.805 ng/uL
 RT: 3.628 min Scan# 109
 Delta R.T. 0.006 min
 Lab File: BM042933.D
 Acq: 20 Nov 2023 18:06

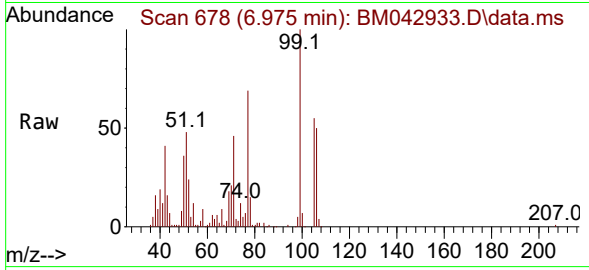
Tgt Ion: 79 Resp: 98133
 Ion Ratio Lower Upper
 79 100
 52 91.7 74.6 111.8
 51 54.8 44.6 67.0



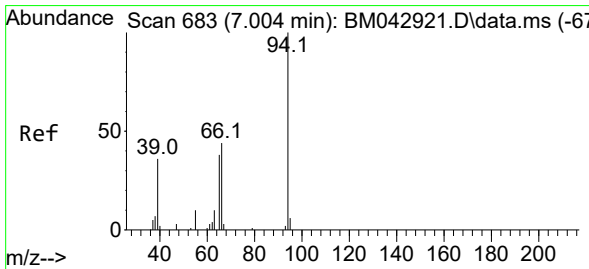
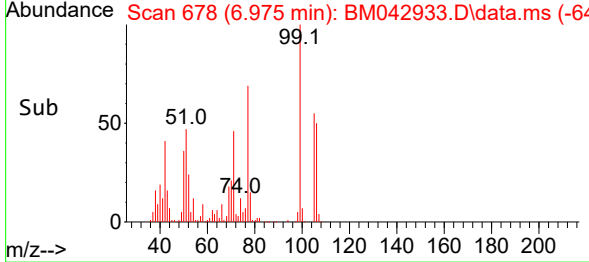
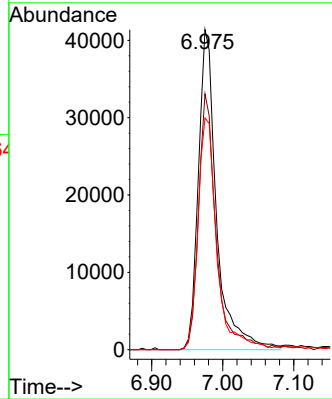


#6
 Benzaldehyde
 Concen: 34.707 ng/u1
 RT: 6.975 min Scan# 61
 Delta R.T. -0.006 min
 Lab File: BM042933.D
 Acq: 20 Nov 2023 18:06

Instrument : BNA_M
 ClientSampleId : SLCS867

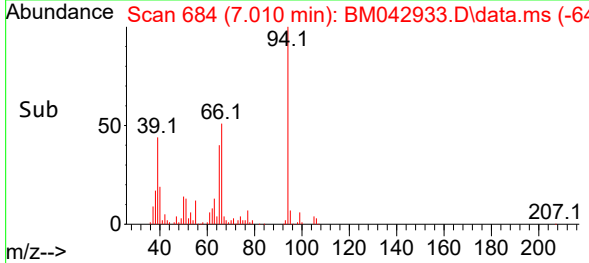
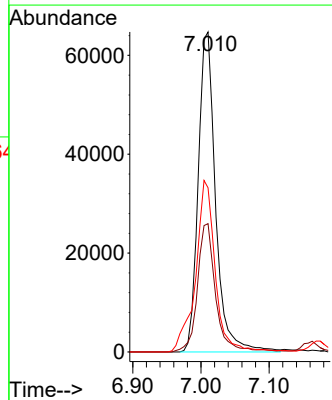
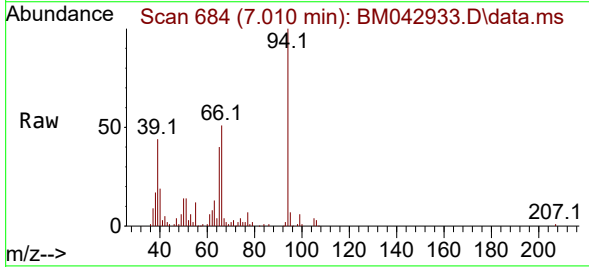


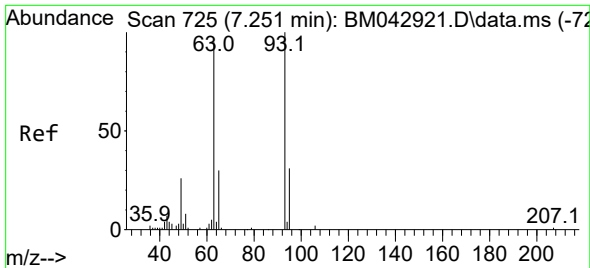
Tgt Ion: 77 Resp: 74023
 Ion Ratio Lower Upper
 77 100
 105 79.9 69.6 104.4
 106 72.4 64.2 96.2



#8
 Phenol
 Concen: 31.098 ng/u1
 RT: 7.010 min Scan# 684
 Delta R.T. 0.006 min
 Lab File: BM042933.D
 Acq: 20 Nov 2023 18:06

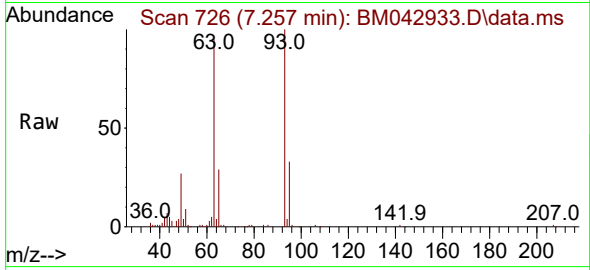
Tgt Ion: 94 Resp: 114987
 Ion Ratio Lower Upper
 94 100
 65 40.1 30.3 45.5
 66 51.3 39.9 59.9





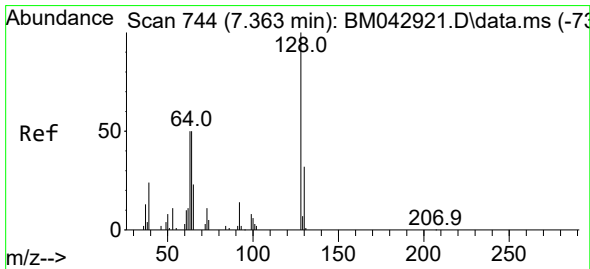
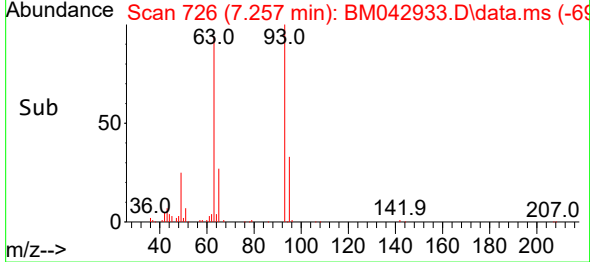
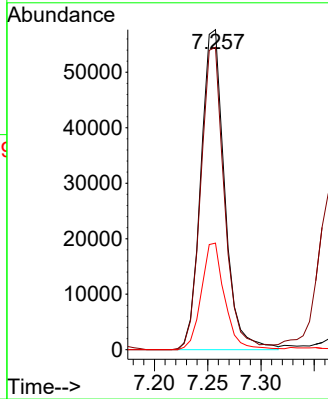
#10
 Bis(2-Chloroethyl)ether
 Concen: 29.335 ng/ul
 RT: 7.257 min Scan# 726
 Delta R.T. 0.000 min
 Lab File: BM042933.D
 Acq: 20 Nov 2023 18:06

Instrument :
 BNA_M
 ClientSampleId :
 SLCS867



Tgt Ion: 93 Resp: 89600

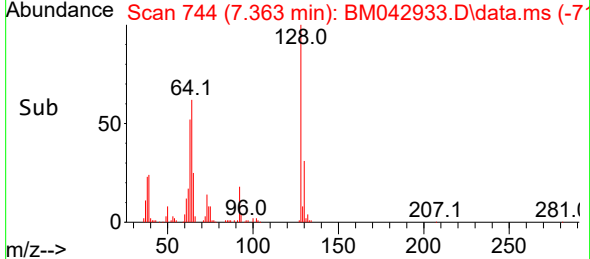
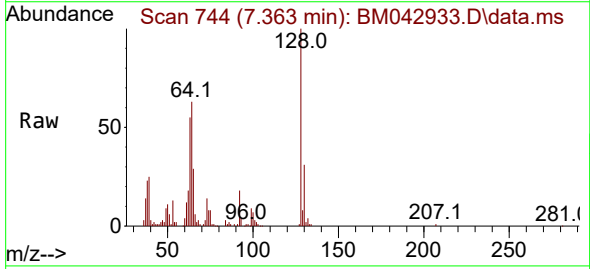
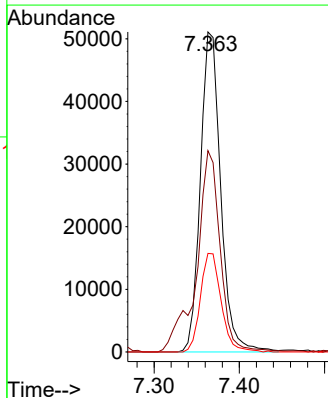
Ion	Ratio	Lower	Upper
93	100		
63	94.5	68.6	102.8
95	33.3	24.8	37.2

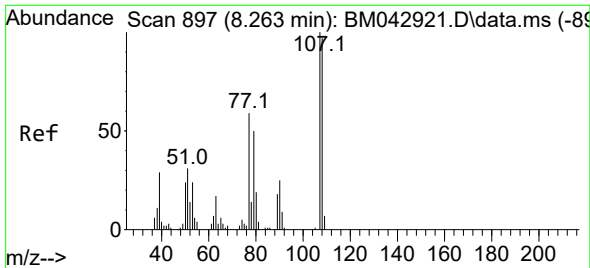


#12
 2-Chlorophenol
 Concen: 29.694 ng/ul
 RT: 7.363 min Scan# 744
 Delta R.T. 0.000 min
 Lab File: BM042933.D
 Acq: 20 Nov 2023 18:06

Tgt Ion: 128 Resp: 84764

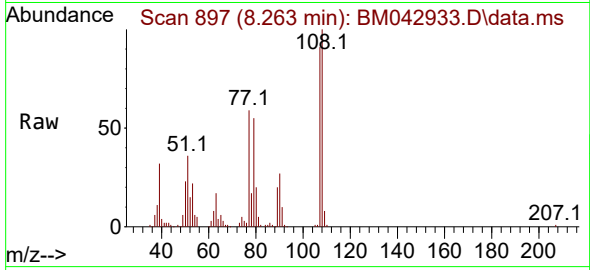
Ion	Ratio	Lower	Upper
128	100		
64	62.9	42.9	64.3
130	30.8	23.9	35.9



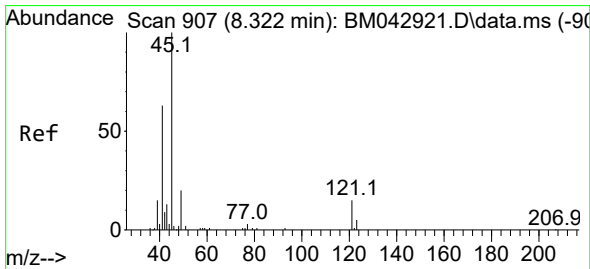
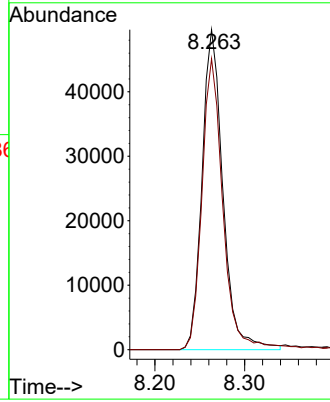
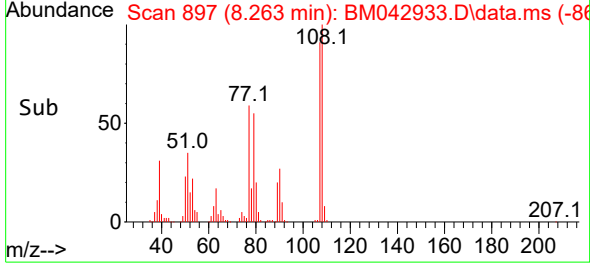


#13
 2-Methylphenol
 Concen: 29.109 ng/ul
 RT: 8.263 min Scan# 897
 Delta R.T. 0.000 min
 Lab File: BM042933.D
 Acq: 20 Nov 2023 18:06

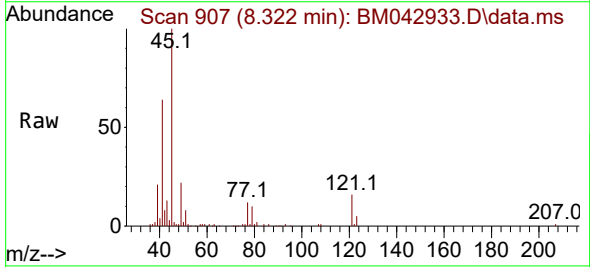
Instrument : BNA_M
 ClientSampleId : SLCS867



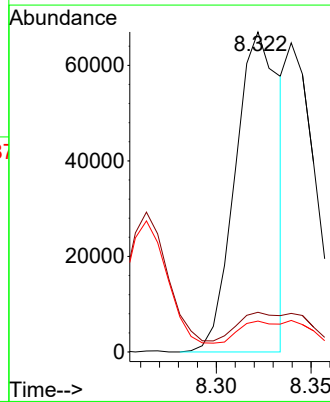
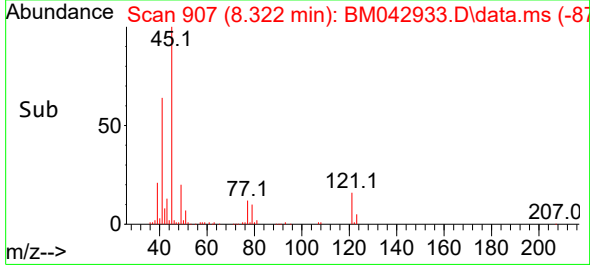
Tgt Ion: 108 Resp: 80263
 Ion Ratio Lower Upper
 108 100
 107 90.9 70.4 105.6

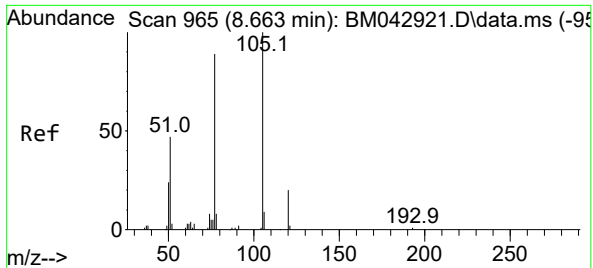


#14
 2,2'-oxybis(1-Chloropropane)
 Concen: 19.542 ng/ul
 RT: 8.322 min Scan# 907
 Delta R.T. 0.000 min
 Lab File: BM042933.D
 Acq: 20 Nov 2023 18:06



Tgt Ion: 45 Resp: 108656
 Ion Ratio Lower Upper
 45 100
 77 12.4 12.2 18.2
 79 9.6 8.2 12.2



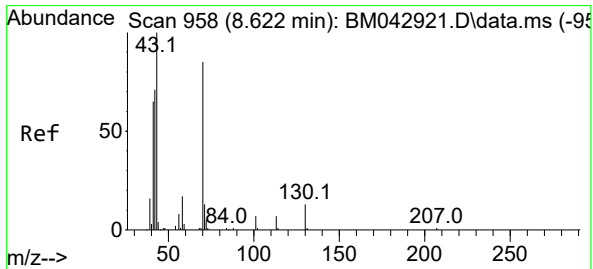
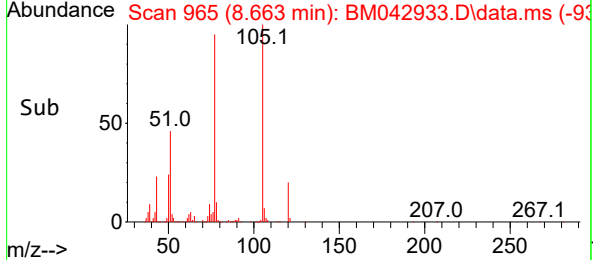
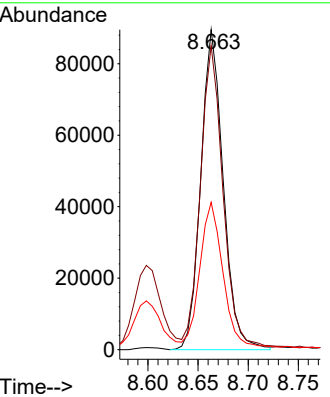
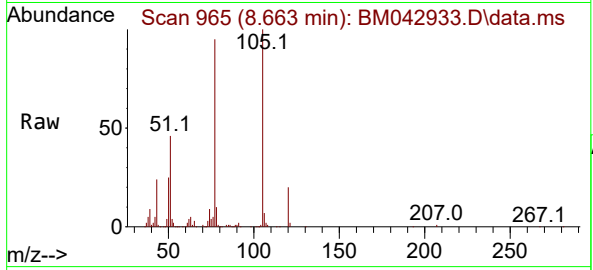


#16
 Acetophenone
 Concen: 28.351 ng/ul
 RT: 8.663 min Scan# 90
 Delta R.T. 0.000 min
 Lab File: BM042933.D
 Acq: 20 Nov 2023 18:06

Instrument : BNA_M
 ClientSampleId : SLCS867

Tgt Ion: 105 Resp: 139530

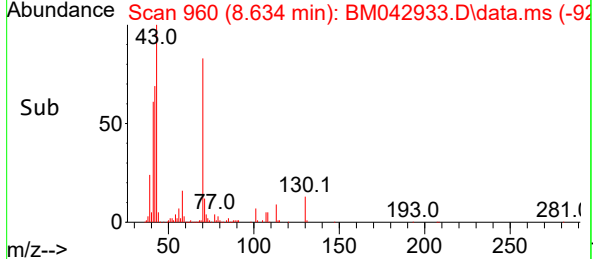
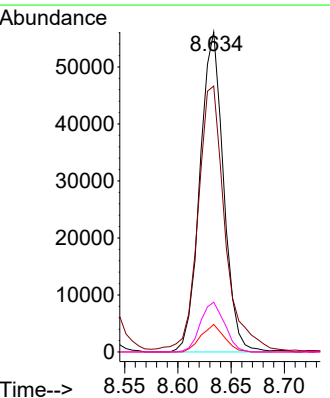
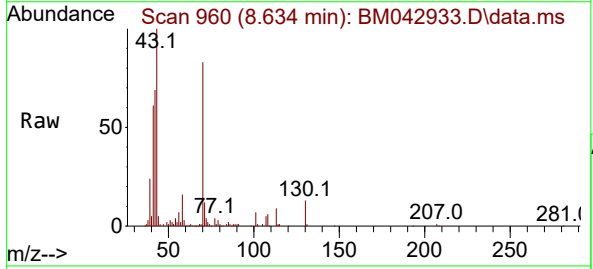
Ion	Ratio	Lower	Upper
105	100		
77	95.0	71.6	107.4
51	46.0	35.4	53.2

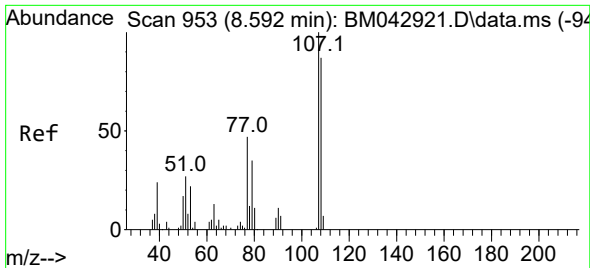


#17
 N-Nitroso-di-n-propylamine
 Concen: 28.842 ng/ul
 RT: 8.634 min Scan# 960
 Delta R.T. 0.006 min
 Lab File: BM042933.D
 Acq: 20 Nov 2023 18:06

Tgt Ion: 70 Resp: 86410

Ion	Ratio	Lower	Upper
70	100		
42	83.1	63.0	94.6
101	8.6	7.0	10.4
130	15.6	11.8	17.8

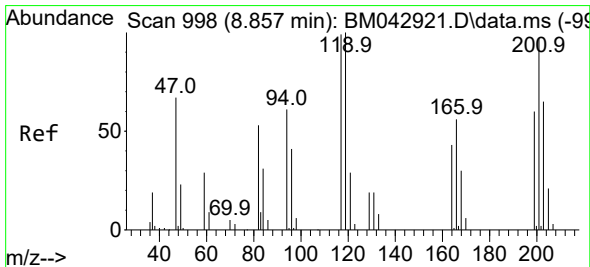
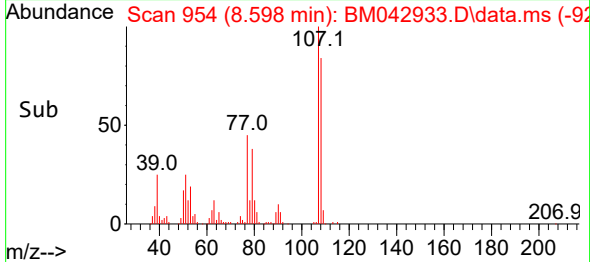
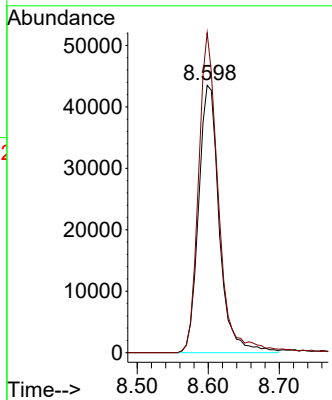
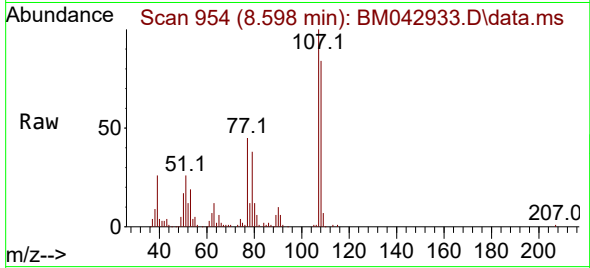




#18
 4-Methylphenol
 Concen: 29.395 ng/ul
 RT: 8.598 min Scan# 911
 Delta R.T. 0.000 min
 Lab File: BM042933.D
 Acq: 20 Nov 2023 18:06

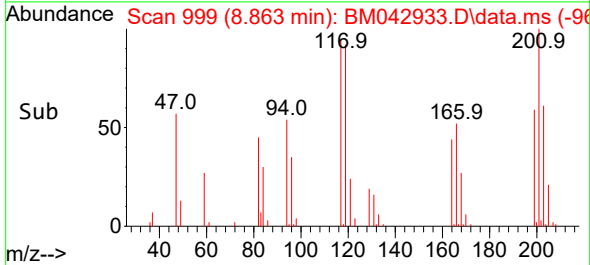
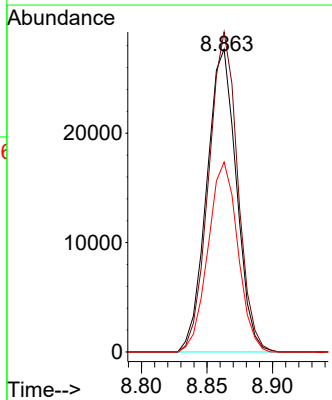
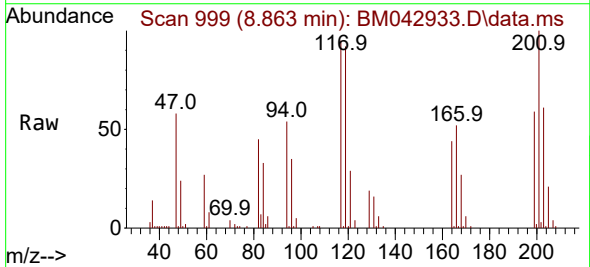
Instrument :
 BNA_M
 ClientSampleId :
 SLCS867

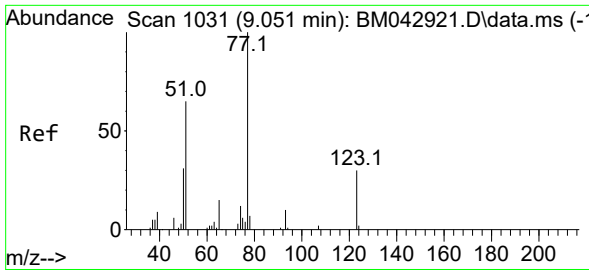
Tgt Ion:108 Resp: 88122
 Ion Ratio Lower Upper
 108 100
 107 119.7 89.4 134.0



#19
 Hexachloroethane
 Concen: 27.396 ng/ul
 RT: 8.863 min Scan# 999
 Delta R.T. 0.000 min
 Lab File: BM042933.D
 Acq: 20 Nov 2023 18:06

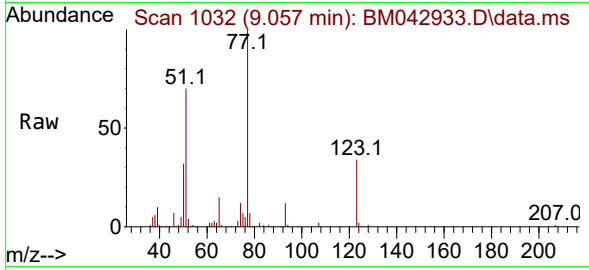
Tgt Ion:117 Resp: 43587
 Ion Ratio Lower Upper
 117 100
 201 105.7 90.0 135.0
 199 62.7 52.2 78.4



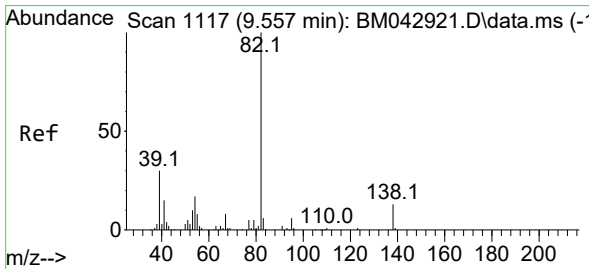
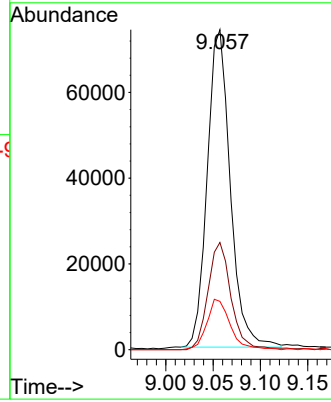
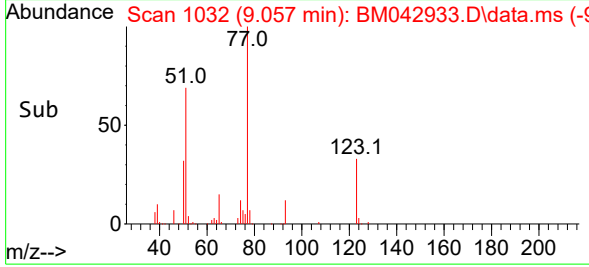


#22
 Nitrobenzene
 Concen: 31.406 ng/uI
 RT: 9.057 min Scan# 1118
 Delta R.T. 0.000 min
 Lab File: BM042933.D
 Acq: 20 Nov 2023 18:06

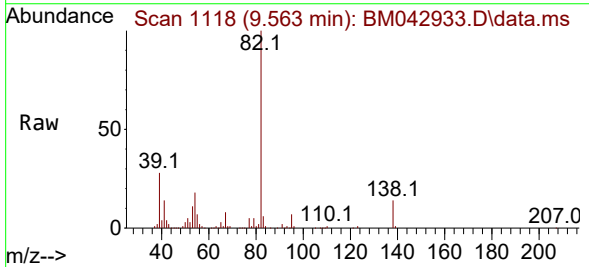
Instrument :
 BNA_M
 ClientSampleId :
 SLCS867



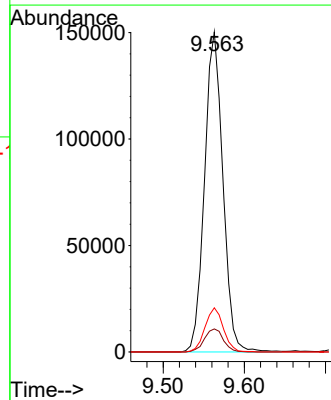
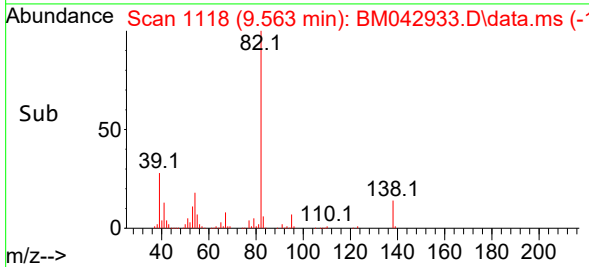
Tgt Ion: 77 Resp: 125176
 Ion Ratio Lower Upper
 77 100
 123 33.5 28.4 42.6
 65 15.1 12.4 18.6

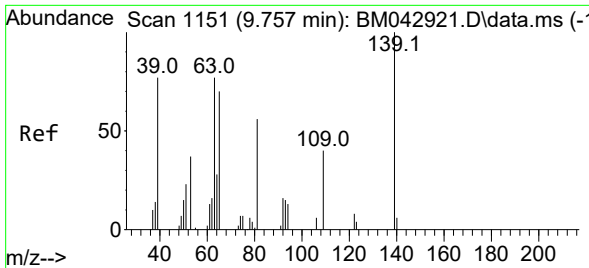


#23
 Isophorone
 Concen: 29.706 ng/uI
 RT: 9.563 min Scan# 1118
 Delta R.T. 0.000 min
 Lab File: BM042933.D
 Acq: 20 Nov 2023 18:06



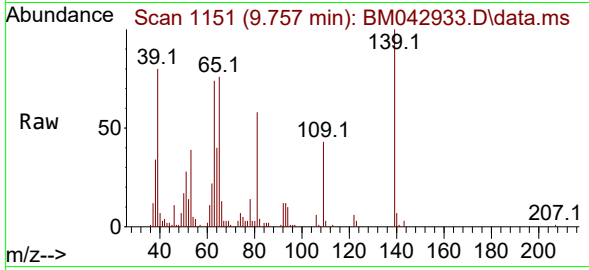
Tgt Ion: 82 Resp: 235819
 Ion Ratio Lower Upper
 82 100
 95 7.2 6.4 9.6
 138 13.8 12.1 18.1



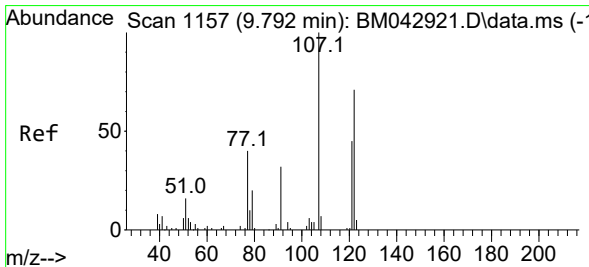
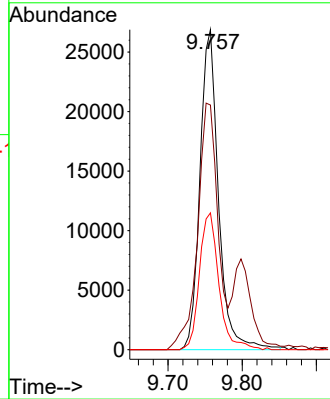
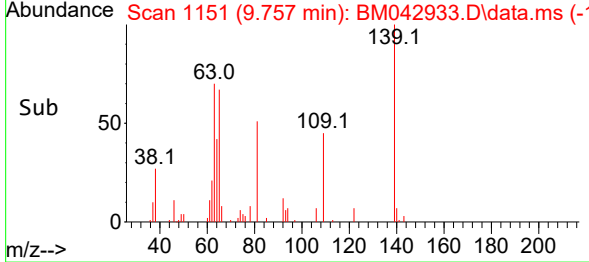


#25
 2-Nitrophenol
 Concen: 29.778 ng/ul
 RT: 9.757 min Scan# 1151
 Delta R.T. 0.000 min
 Lab File: BM042933.D
 Acq: 20 Nov 2023 18:06

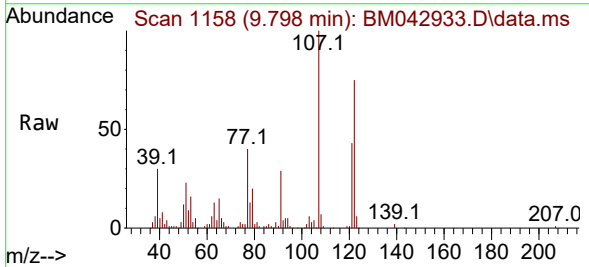
Instrument :
 BNA_M
 ClientSampleId :
 SLCS867



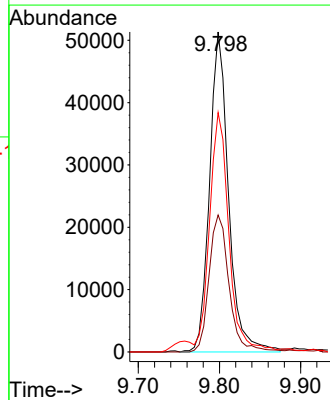
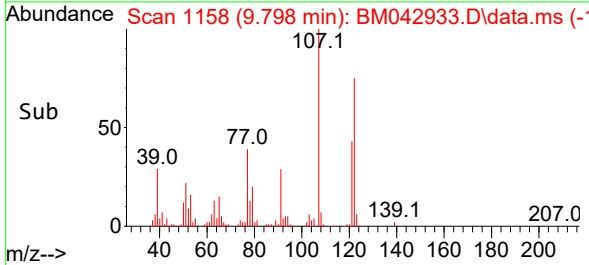
Tgt Ion:139 Resp: 46673
 Ion Ratio Lower Upper
 139 100
 65 76.4 59.1 88.7
 109 42.8 33.9 50.9

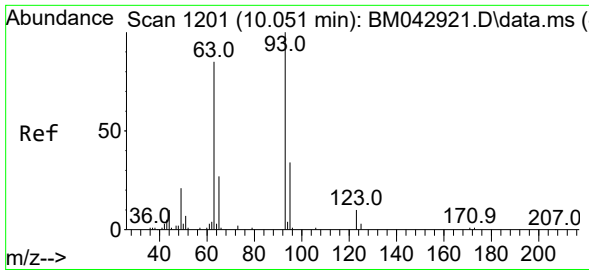


#26
 2,4-Dimethylphenol
 Concen: 24.869 ng/ul
 RT: 9.798 min Scan# 1158
 Delta R.T. 0.000 min
 Lab File: BM042933.D
 Acq: 20 Nov 2023 18:06



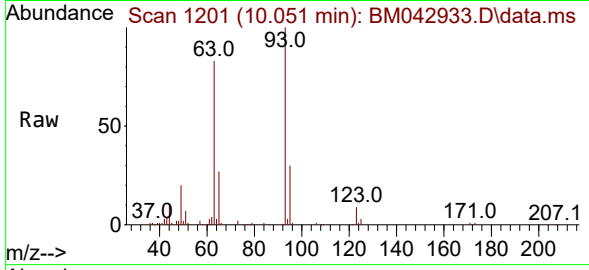
Tgt Ion:107 Resp: 83398
 Ion Ratio Lower Upper
 107 100
 121 42.8 38.0 57.0
 122 74.8 60.5 90.7





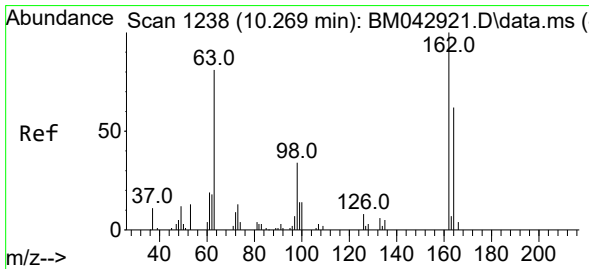
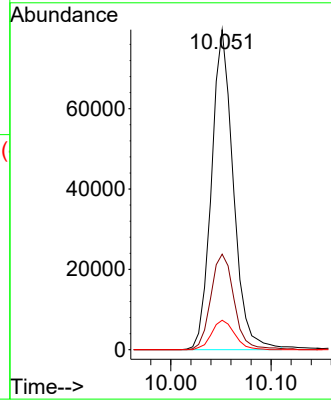
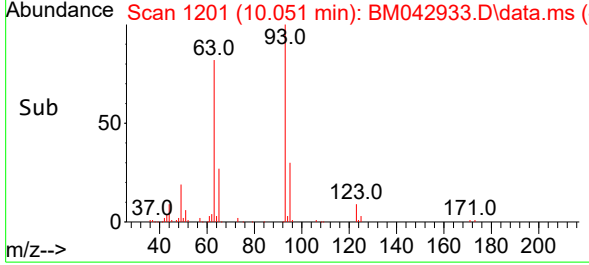
#27
 Bis(2-Chloroethoxy)methane
 Concen: 30.088 ng/ul
 RT: 10.051 min Scan# 11
 Delta R.T. 0.000 min
 Lab File: BM042933.D
 Acq: 20 Nov 2023 18:06

Instrument :
 BNA_M
 ClientSampleId :
 SLCS867

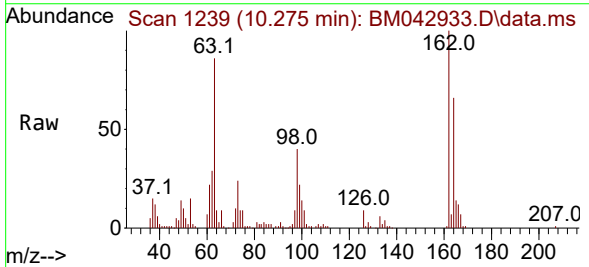


Tgt Ion: 93 Resp: 120696

Ion	Ratio	Lower	Upper
93	100		
95	29.8	26.5	39.7
123	9.2	8.2	12.2

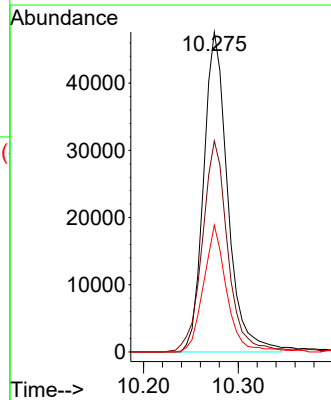
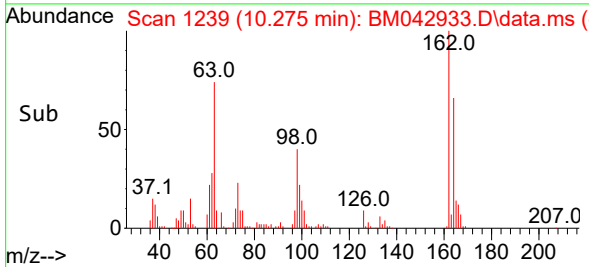


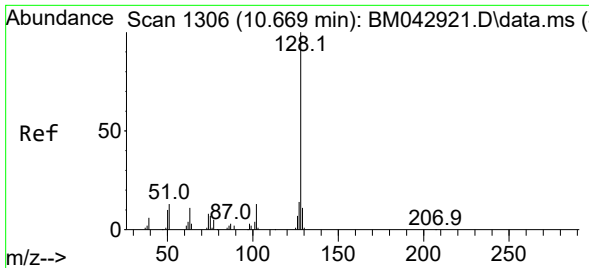
#29
 2,4-Dichlorophenol
 Concen: 31.031 ng/ul
 RT: 10.275 min Scan# 1239
 Delta R.T. 0.000 min
 Lab File: BM042933.D
 Acq: 20 Nov 2023 18:06



Tgt Ion: 162 Resp: 84275

Ion	Ratio	Lower	Upper
162	100		
164	66.0	53.4	80.2
98	39.7	28.4	42.6

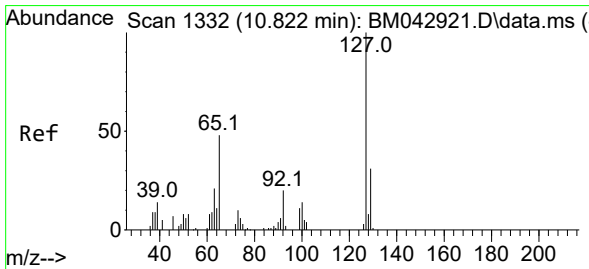
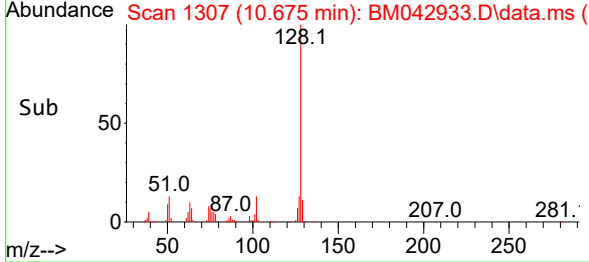
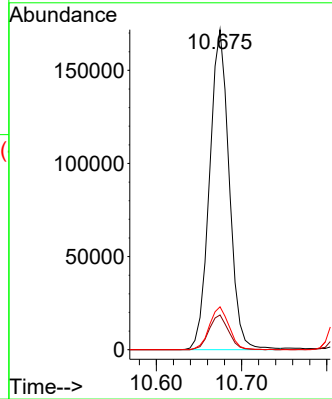
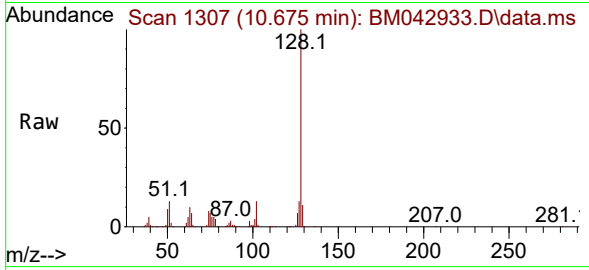




#30
 Naphthalene
 Concen: 29.159 ng/ul
 RT: 10.675 min Scan# 1307
 Delta R.T. 0.000 min
 Lab File: BM042933.D
 Acq: 20 Nov 2023 18:06

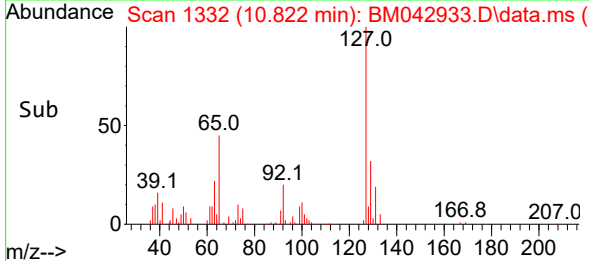
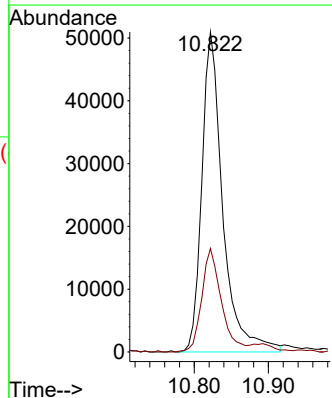
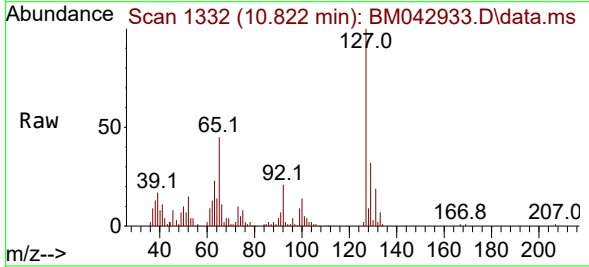
Instrument :
 BNA_M
 ClientSampleId :
 SLCS867

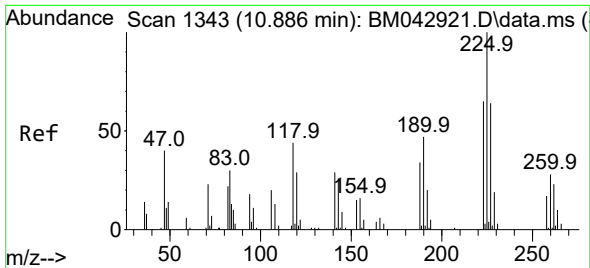
Tgt Ion:128 Resp: 274773
 Ion Ratio Lower Upper
 128 100
 129 10.8 8.6 13.0
 127 13.4 10.5 15.7



#32
 4-Chloroaniline
 Concen: 28.640 ng/ul
 RT: 10.822 min Scan# 1332
 Delta R.T. -0.006 min
 Lab File: BM042933.D
 Acq: 20 Nov 2023 18:06

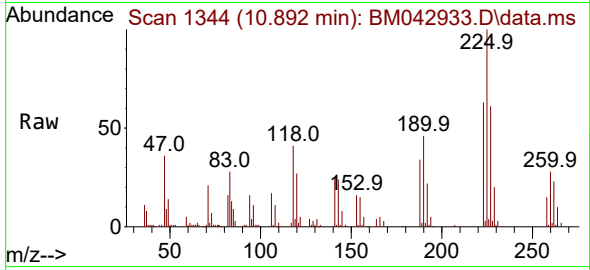
Tgt Ion:127 Resp: 100072
 Ion Ratio Lower Upper
 127 100
 129 32.4 26.7 40.1



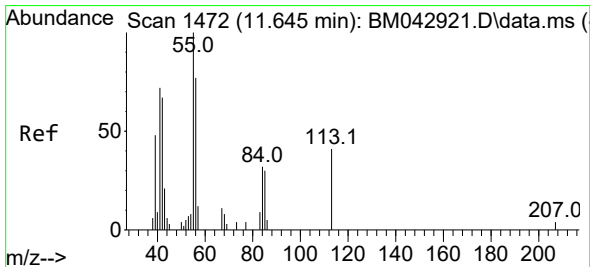
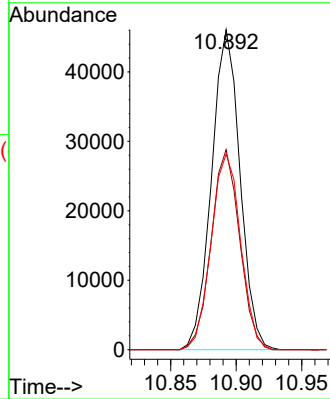
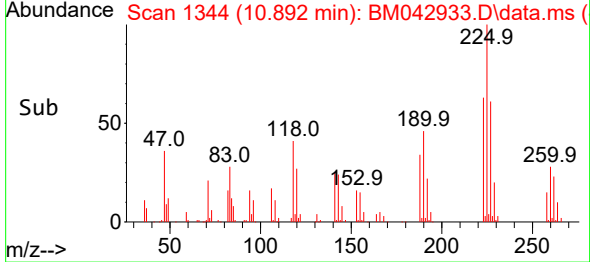


#33
 Hexachlorobutadiene
 Concen: 29.000 ng/u1
 RT: 10.892 min Scan# 11
 Delta R.T. 0.000 min
 Lab File: BM042933.D
 Acq: 20 Nov 2023 18:06

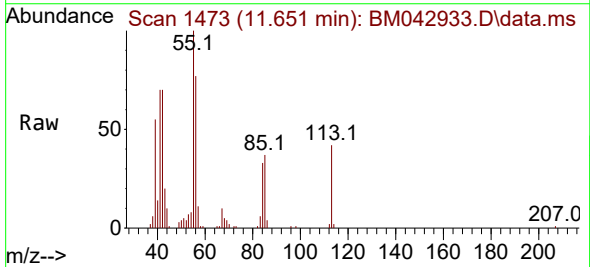
Instrument :
 BNA_M
 ClientSampleId :
 SLCS867



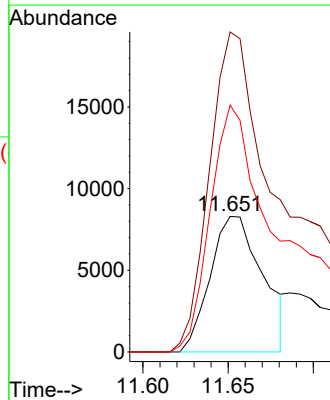
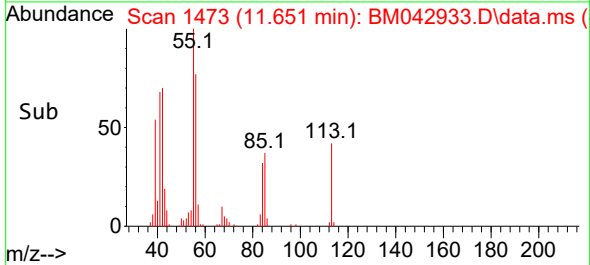
Tgt Ion:225 Resp: 69570
 Ion Ratio Lower Upper
 225 100
 223 62.5 53.0 79.4
 227 61.1 50.5 75.7

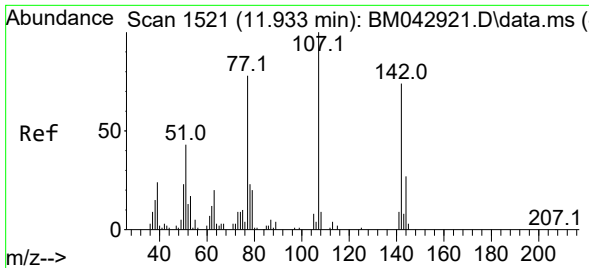


#34
 Caprolactam
 Concen: 22.071 ng/u1
 RT: 11.651 min Scan# 1473
 Delta R.T. 0.006 min
 Lab File: BM042933.D
 Acq: 20 Nov 2023 18:06



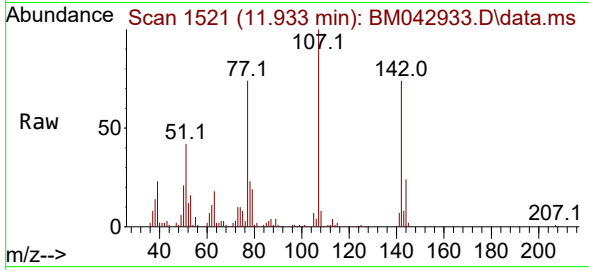
Tgt Ion:113 Resp: 17773
 Ion Ratio Lower Upper
 113 100
 55 236.1 184.2 276.2
 56 182.1 134.3 201.5





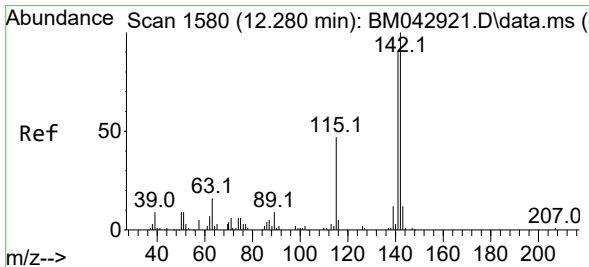
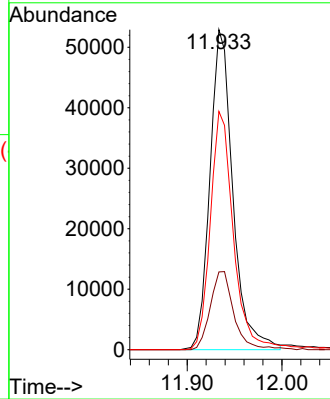
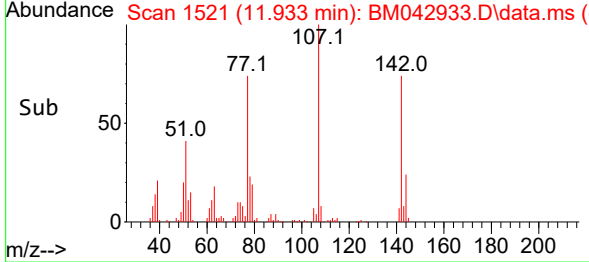
#35
 4-Chloro-3-methylphenol
 Concen: 30.533 ng/ul
 RT: 11.933 min Scan# 11
 Delta R.T. 0.000 min
 Lab File: BM042933.D
 Acq: 20 Nov 2023 18:06

Instrument :
 BNA_M
 ClientSampleId :
 SLCS867

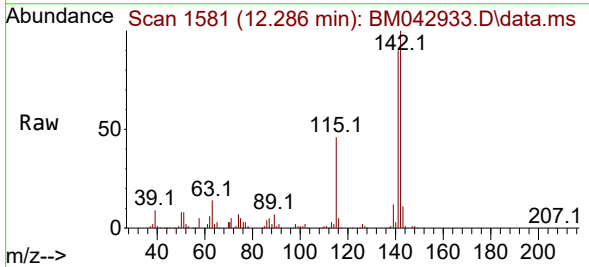


Tgt Ion:107 Resp: 88856

Ion	Ratio	Lower	Upper
107	100		
144	24.3	18.3	27.5
142	74.5	56.3	84.5

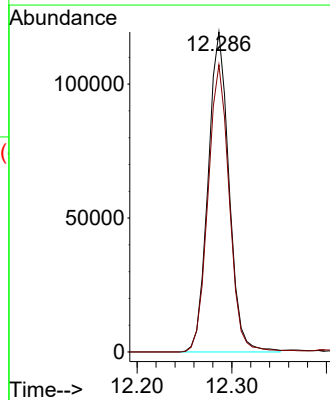
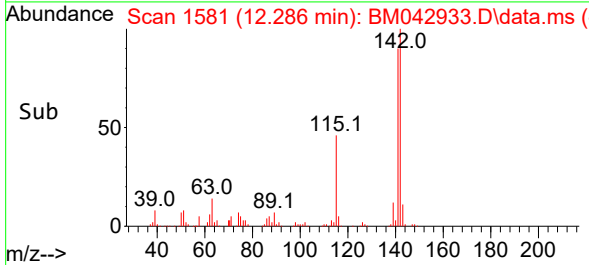


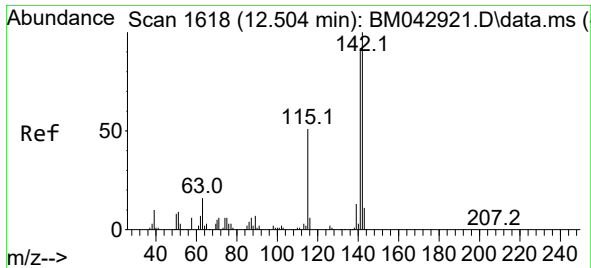
#36
 2-Methylnaphthalene
 Concen: 28.994 ng/ul
 RT: 12.286 min Scan# 1581
 Delta R.T. 0.000 min
 Lab File: BM042933.D
 Acq: 20 Nov 2023 18:06



Tgt Ion:142 Resp: 183113

Ion	Ratio	Lower	Upper
142	100		
141	89.8	73.6	110.4



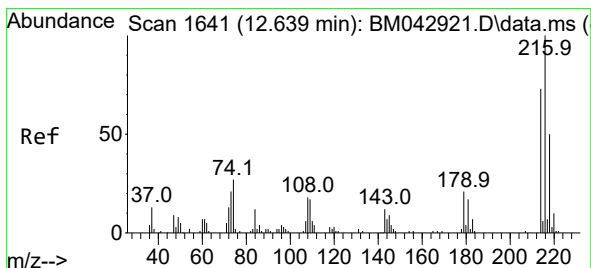
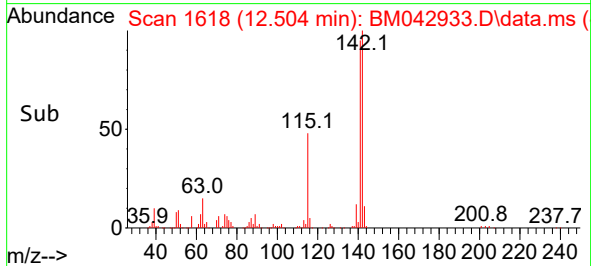
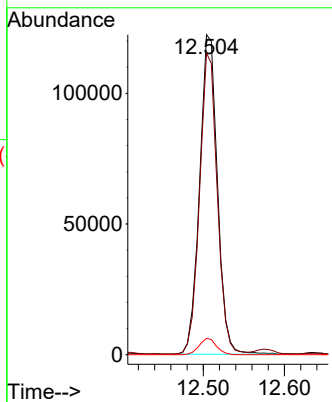
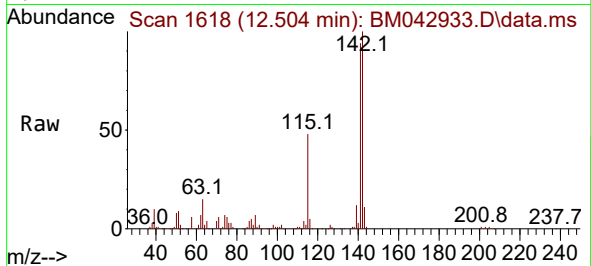


#37
 1-Methylnaphthalene
 Concen: 28.141 ng/ul
 RT: 12.504 min Scan# 1618
 Delta R.T. -0.006 min
 Lab File: BM042933.D
 Acq: 20 Nov 2023 18:06

Instrument : BNA_M
 ClientSampleId : SLCS867

Tgt Ion:142 Resp: 186861

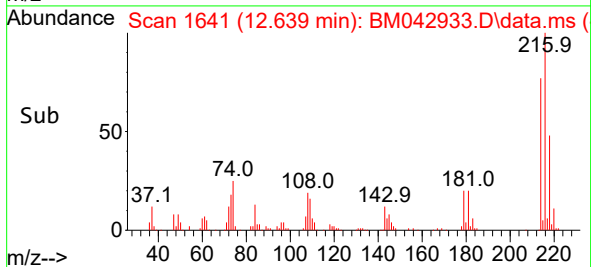
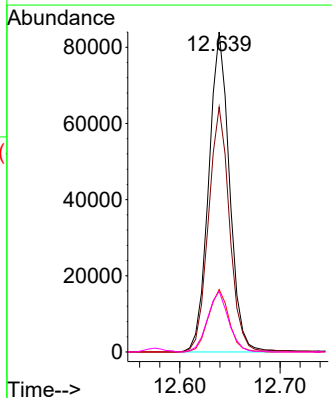
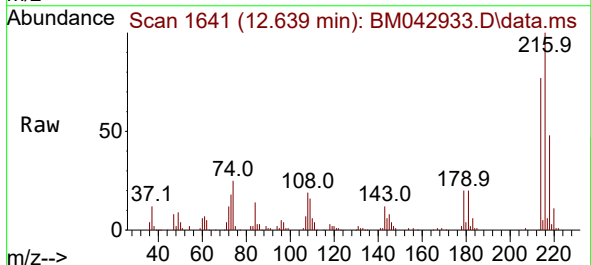
Ion	Ratio	Lower	Upper
142	100		
141	94.3	73.3	109.9
116	5.1	3.9	5.9

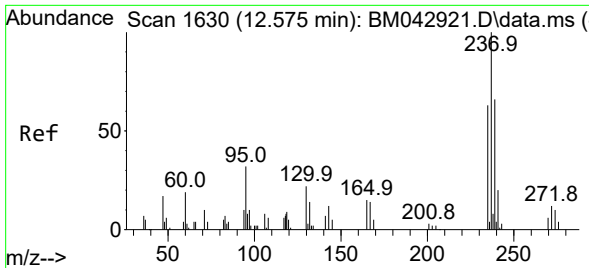


#39
 1,2,4,5-Tetrachlorobenzene
 Concen: 31.269 ng/ul
 RT: 12.639 min Scan# 1641
 Delta R.T. 0.000 min
 Lab File: BM042933.D
 Acq: 20 Nov 2023 18:06

Tgt Ion:216 Resp: 121147

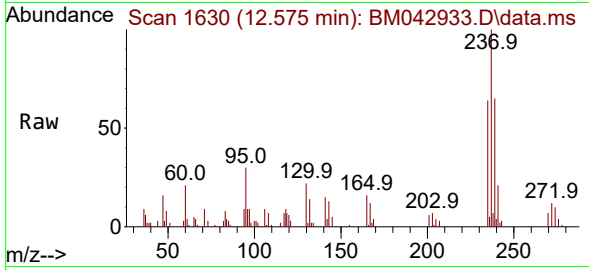
Ion	Ratio	Lower	Upper
216	100		
214	76.5	64.1	96.1
179	19.5	15.5	23.3
108	18.9	15.1	22.7



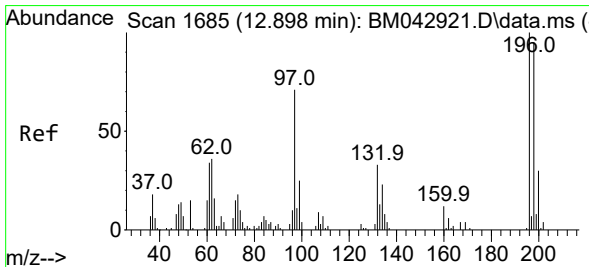
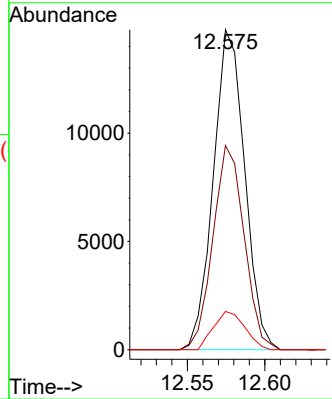
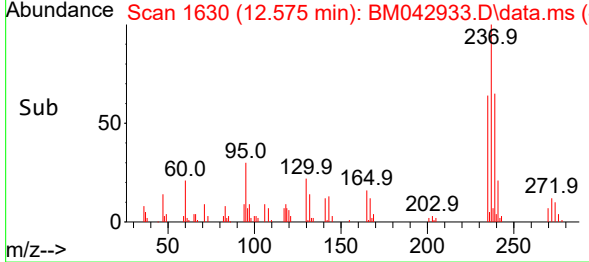


#40
 Hexachlorocyclopentadiene
 Concen: 11.345 ng/ul
 RT: 12.575 min Scan# 1630
 Delta R.T. -0.006 min
 Lab File: BM042933.D
 Acq: 20 Nov 2023 18:06

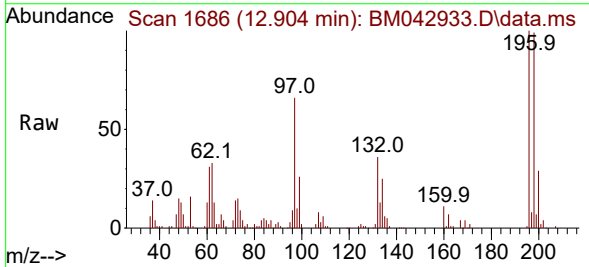
Instrument :
 BNA_M
 ClientSampleId :
 SLCS867



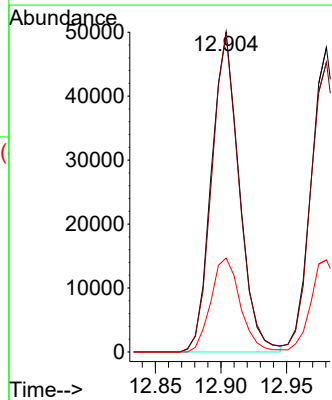
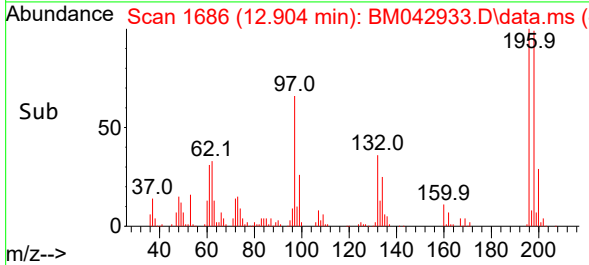
Tgt Ion:237 Resp: 20810
 Ion Ratio Lower Upper
 237 100
 235 63.8 53.3 79.9
 272 11.9 10.7 16.1

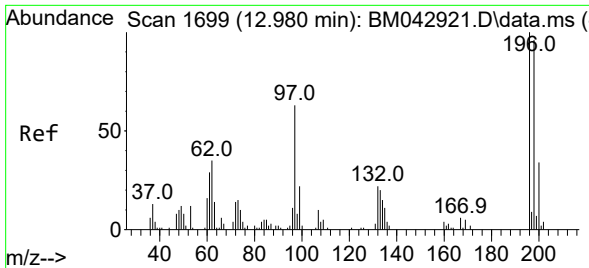


#41
 2,4,6-Trichlorophenol
 Concen: 31.115 ng/ul
 RT: 12.904 min Scan# 1686
 Delta R.T. 0.000 min
 Lab File: BM042933.D
 Acq: 20 Nov 2023 18:06



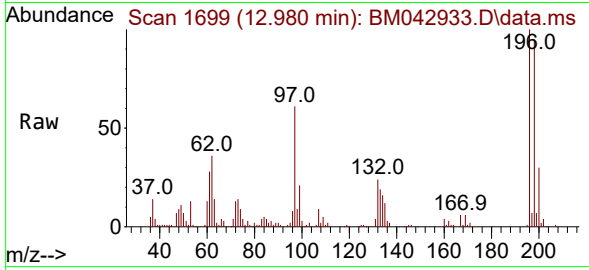
Tgt Ion:196 Resp: 73635
 Ion Ratio Lower Upper
 196 100
 198 99.4 81.0 121.4
 200 29.3 24.1 36.1



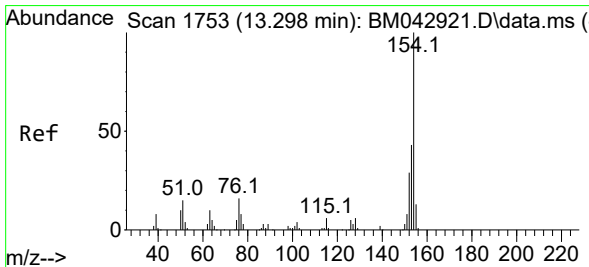
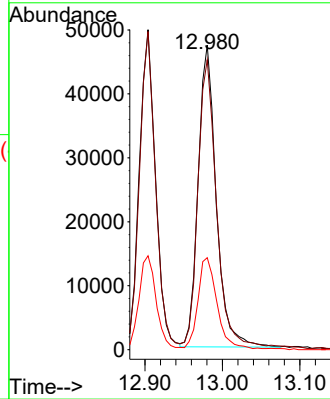
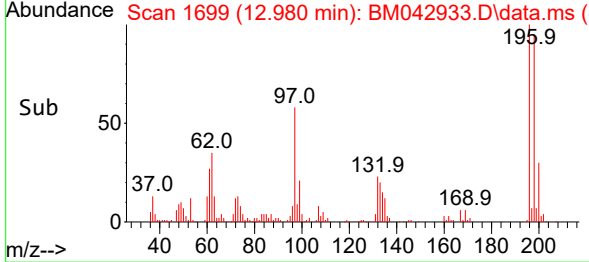


#42
 2,4,5-Trichlorophenol
 Concen: 33.588 ng/uI
 RT: 12.980 min Scan# 1
 Delta R.T. 0.000 min
 Lab File: BM042933.D
 Acq: 20 Nov 2023 18:06

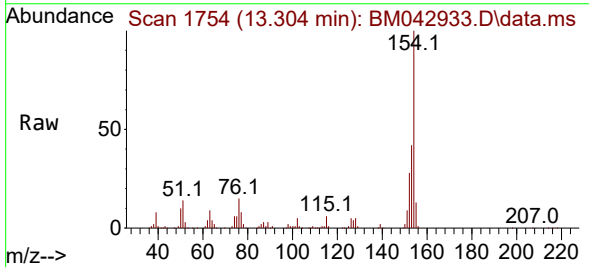
Instrument :
 BNA_M
 ClientSampleId :
 SLCS867



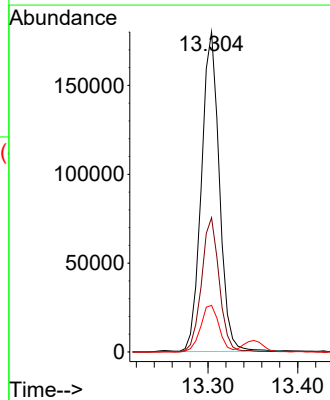
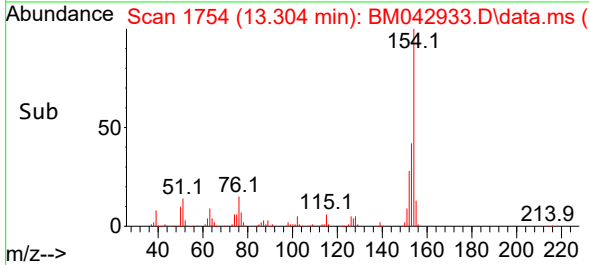
Tgt Ion:196 Resp: 76753
 Ion Ratio Lower Upper
 196 100
 198 95.2 77.4 116.0
 200 30.2 26.2 39.4

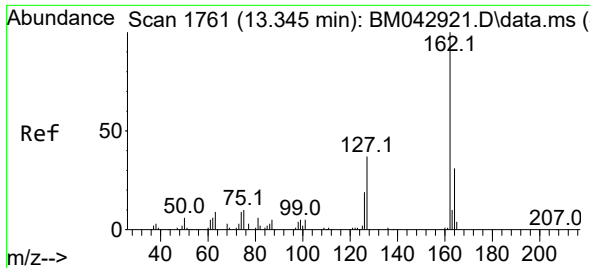


#43
 1,1'-Biphenyl
 Concen: 30.288 ng/uI
 RT: 13.304 min Scan# 1754
 Delta R.T. 0.000 min
 Lab File: BM042933.D
 Acq: 20 Nov 2023 18:06



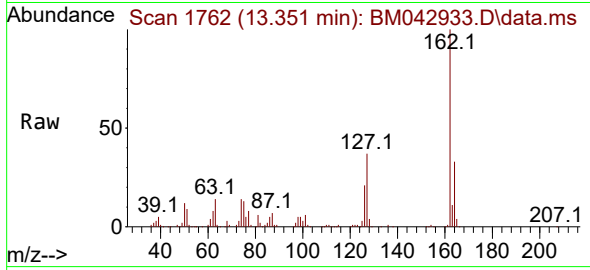
Tgt Ion:154 Resp: 249531
 Ion Ratio Lower Upper
 154 100
 153 42.0 32.4 48.6
 76 14.5 10.7 16.1



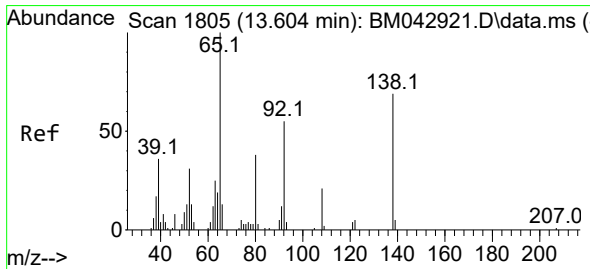
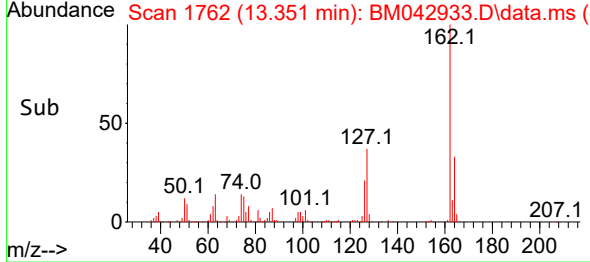
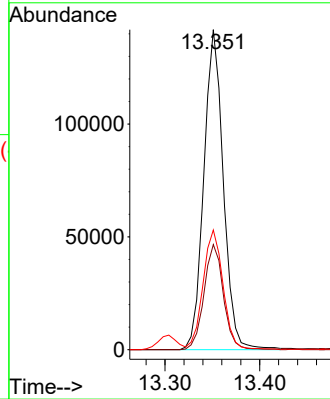


#44
 2-Chloronaphthalene
 Concen: 30.571 ng/ul
 RT: 13.351 min Scan# 1762
 Delta R.T. 0.000 min
 Lab File: BM042933.D
 Acq: 20 Nov 2023 18:06

Instrument :
 BNA_M
 ClientSampleId :
 SLCS867

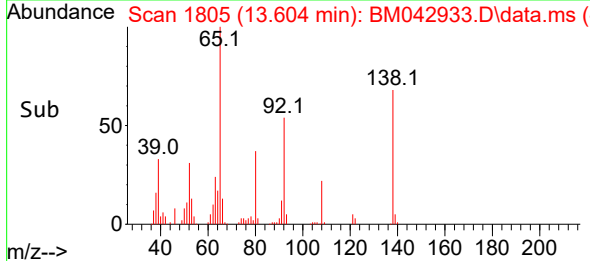
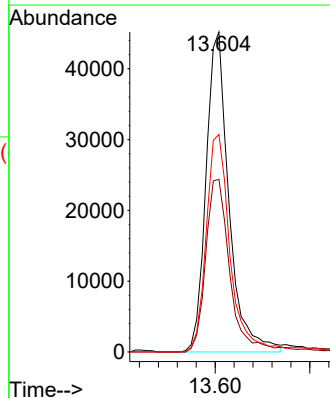
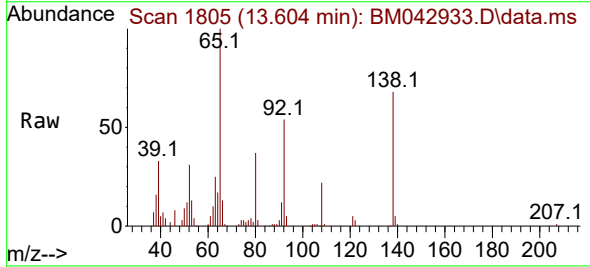


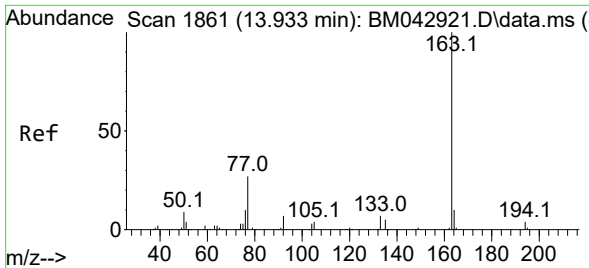
Tgt Ion:162 Resp: 202619
 Ion Ratio Lower Upper
 162 100
 164 32.9 24.2 36.2
 127 37.4 30.8 46.2



#45
 2-Nitroaniline
 Concen: 35.117 ng/ul
 RT: 13.604 min Scan# 1805
 Delta R.T. 0.000 min
 Lab File: BM042933.D
 Acq: 20 Nov 2023 18:06

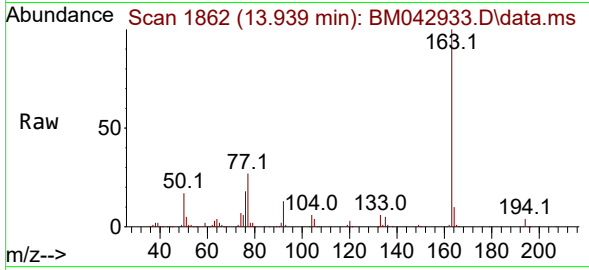
Tgt Ion: 65 Resp: 75906
 Ion Ratio Lower Upper
 65 100
 92 53.9 49.1 73.7
 138 68.0 61.8 92.8



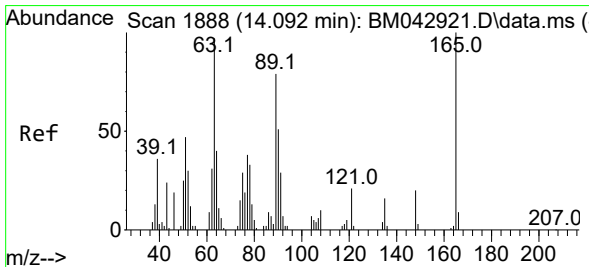
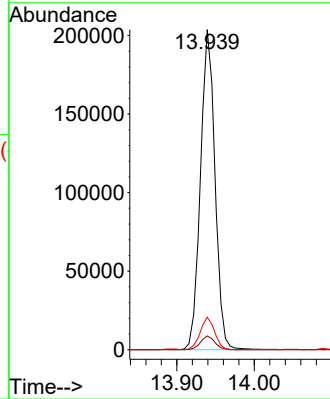
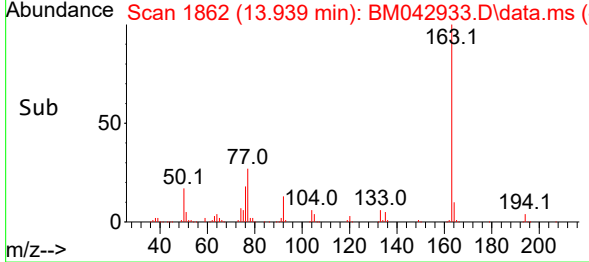


#47
 Dimethylphthalate
 Concen: 29.113 ng/ul
 RT: 13.939 min Scan# 1862
 Delta R.T. 0.000 min
 Lab File: BM042933.D
 Acq: 20 Nov 2023 18:06

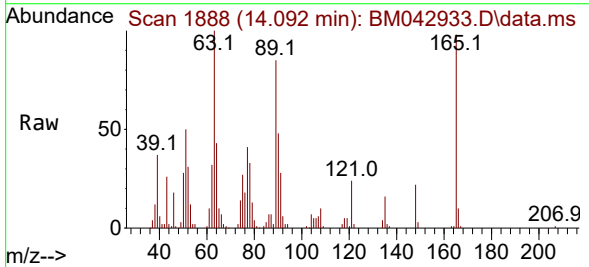
Instrument :
 BNA_M
 ClientSampleId :
 SLCS867



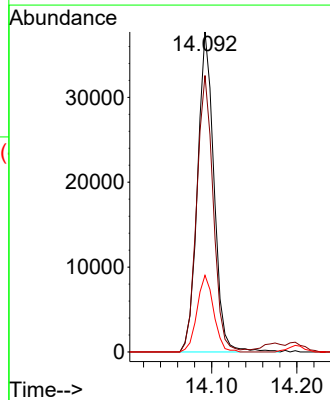
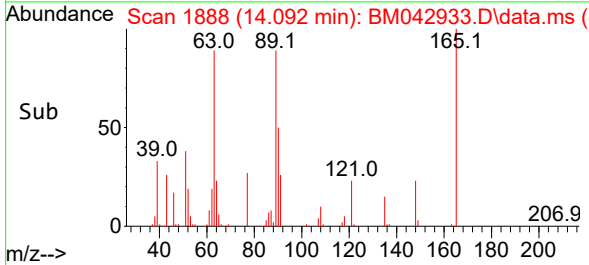
Tgt Ion:163 Resp: 265122
 Ion Ratio Lower Upper
 163 100
 194 4.3 3.2 4.8
 164 10.1 7.9 11.9

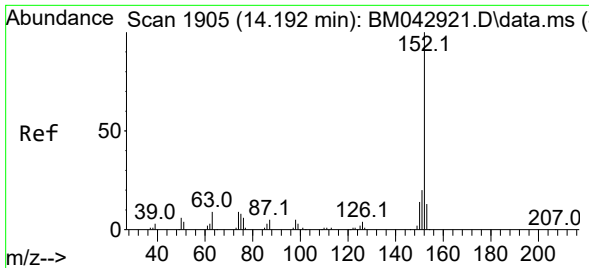


#48
 2,6-Dinitrotoluene
 Concen: 29.608 ng/ul
 RT: 14.092 min Scan# 1888
 Delta R.T. 0.000 min
 Lab File: BM042933.D
 Acq: 20 Nov 2023 18:06



Tgt Ion:165 Resp: 50655
 Ion Ratio Lower Upper
 165 100
 89 86.4 64.1 96.1
 121 23.9 18.4 27.6



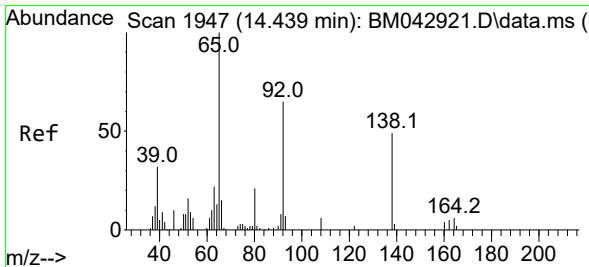
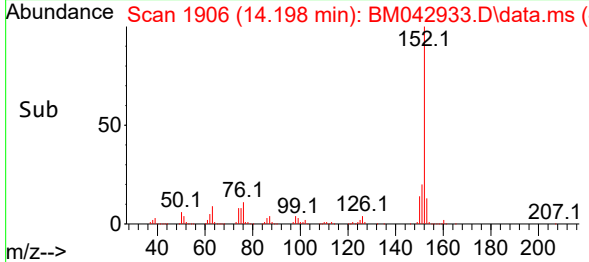
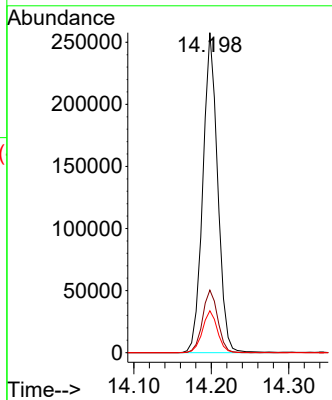
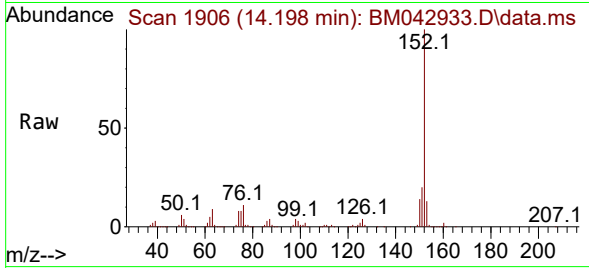


#50
 Acenaphthylene
 Concen: 30.491 ng/uI
 RT: 14.198 min Scan# 1906
 Delta R.T. 0.000 min
 Lab File: BM042933.D
 Acq: 20 Nov 2023 18:06

Instrument :
 BNA_M
 ClientSampleId :
 SLCS867

Tgt Ion:152 Resp: 341788

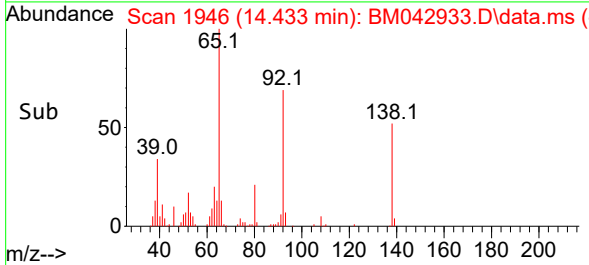
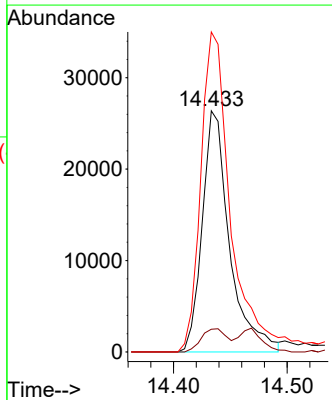
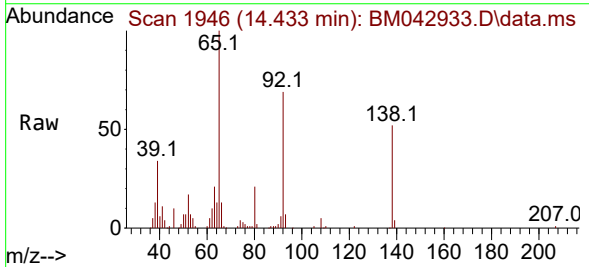
Ion	Ratio	Lower	Upper
152	100		
151	19.6	16.0	24.0
153	13.1	10.5	15.7

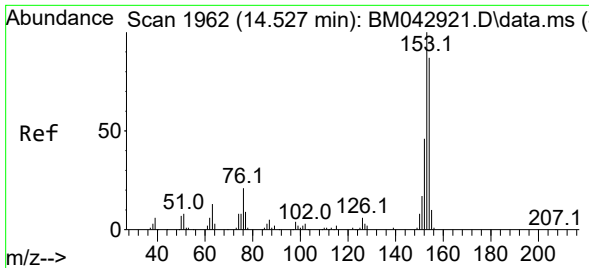


#51
 3-Nitroaniline
 Concen: 31.535 ng/uI
 RT: 14.433 min Scan# 1946
 Delta R.T. -0.006 min
 Lab File: BM042933.D
 Acq: 20 Nov 2023 18:06

Tgt Ion:138 Resp: 44118

Ion	Ratio	Lower	Upper
138	100		
108	9.4	8.7	13.1
92	132.7	109.4	164.0



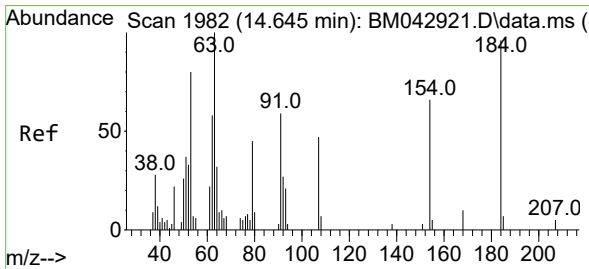
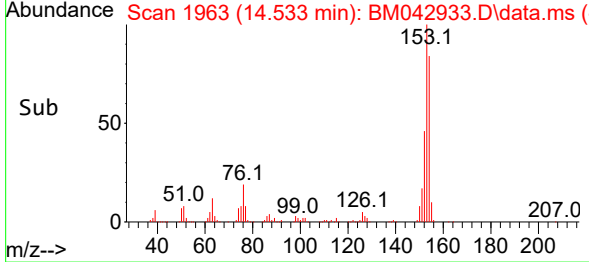
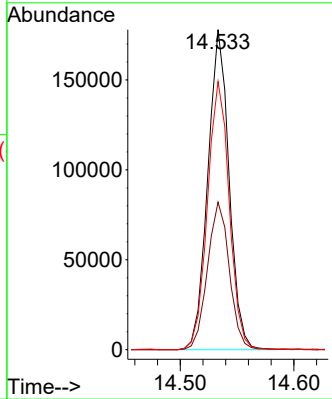
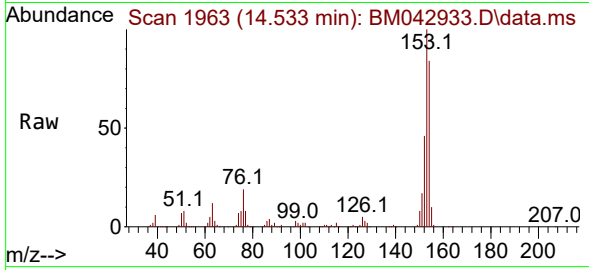


#52
 Acenaphthene
 Concen: 30.559 ng/uI
 RT: 14.533 min Scan# 1963
 Delta R.T. 0.000 min
 Lab File: BM042933.D
 Acq: 20 Nov 2023 18:06

Instrument : BNA_M
 ClientSampleId : SLCS867

Tgt Ion:153 Resp: 231669

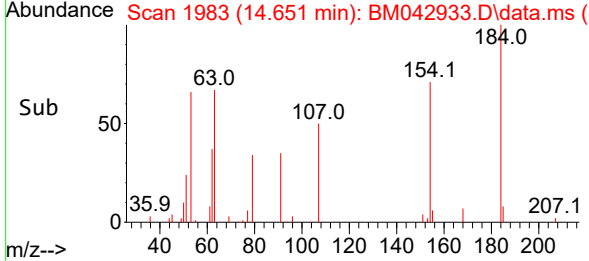
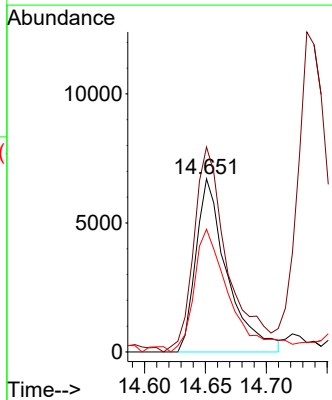
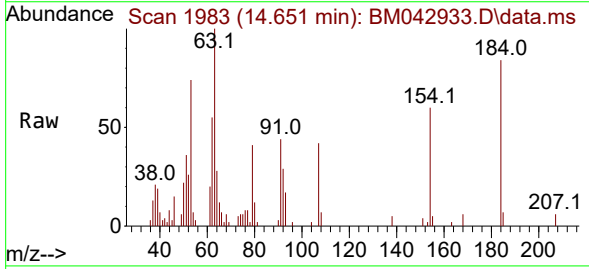
Ion	Ratio	Lower	Upper
153	100		
152	46.1	38.2	57.2
154	83.8	71.3	106.9

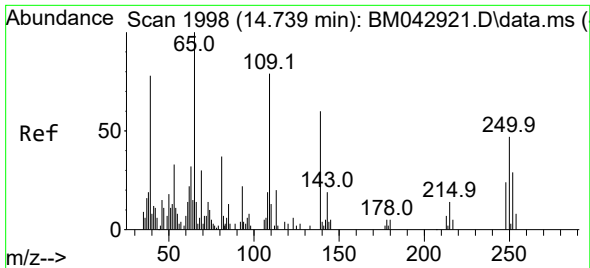


#53
 2,4-Dinitrophenol
 Concen: 14.092 ng/uI
 RT: 14.651 min Scan# 1983
 Delta R.T. 0.000 min
 Lab File: BM042933.D
 Acq: 20 Nov 2023 18:06

Tgt Ion:184 Resp: 11988

Ion	Ratio	Lower	Upper
184	100		
63	118.4	79.1	118.7
154	70.9	65.7	98.5

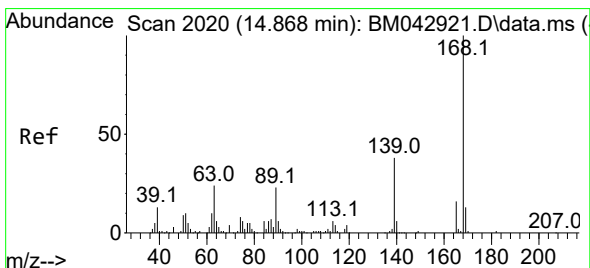
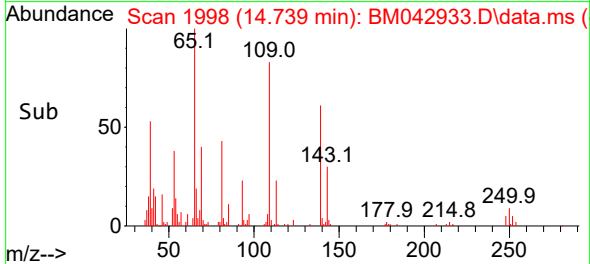
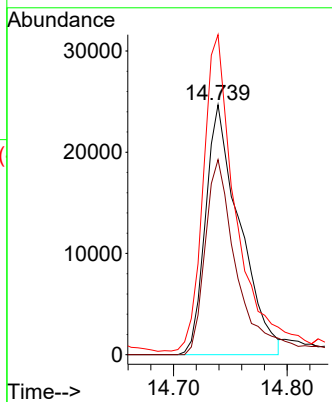
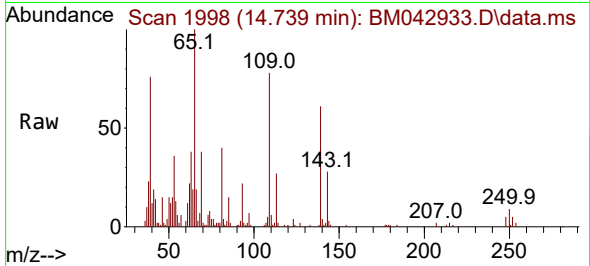




#55
 4-Nitrophenol
 Concen: 30.951 ng/u1
 RT: 14.739 min Scan# 1998
 Delta R.T. 0.000 min
 Lab File: BM042933.D
 Acq: 20 Nov 2023 18:06

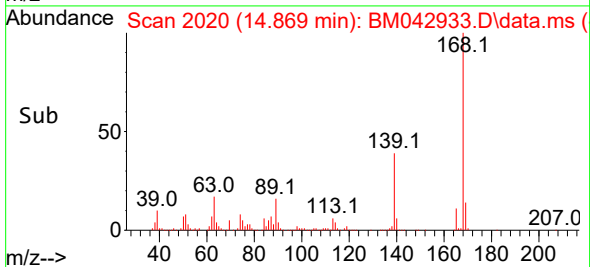
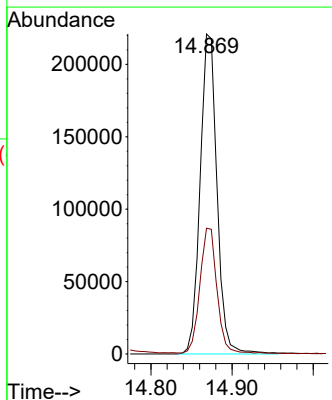
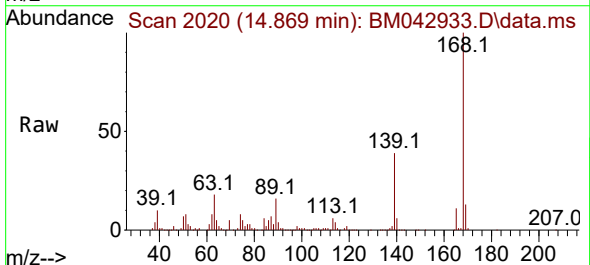
Instrument :
 BNA_M
 ClientSampleId :
 SLCS867

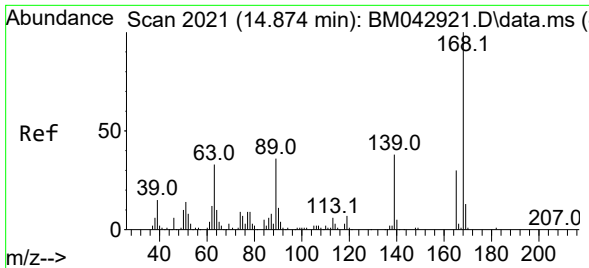
Tgt Ion:109 Resp: 51450
 Ion Ratio Lower Upper
 109 100
 139 78.0 67.1 100.7
 65 128.1 107.1 160.7



#56
 Dibenzofuran
 Concen: 30.252 ng/u1
 RT: 14.869 min Scan# 2020
 Delta R.T. -0.006 min
 Lab File: BM042933.D
 Acq: 20 Nov 2023 18:06

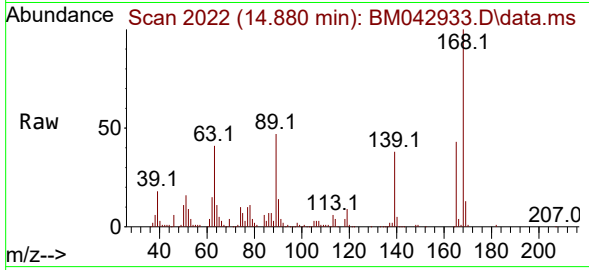
Tgt Ion:168 Resp: 318316
 Ion Ratio Lower Upper
 168 100
 139 39.3 30.8 46.2



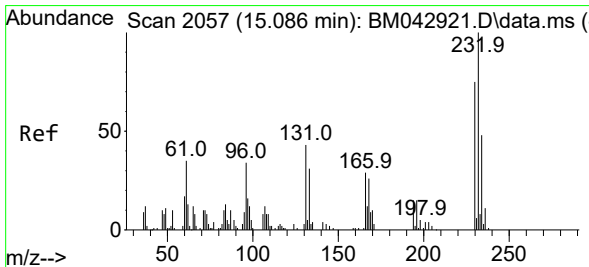
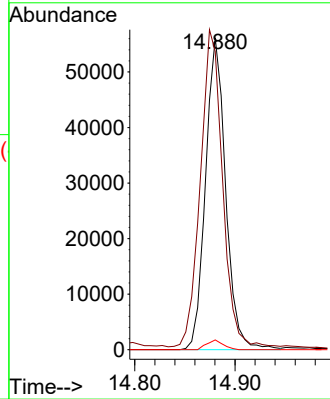
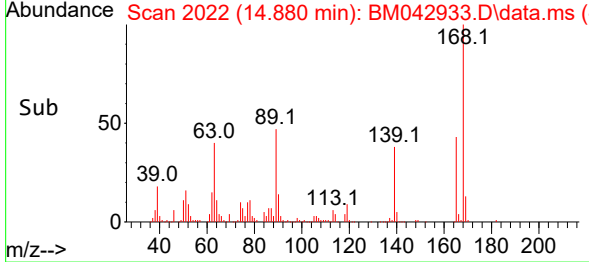


#57
 2,4-Dinitrotoluene
 Concen: 31.261 ng/ul
 RT: 14.880 min Scan# 20
 Delta R.T. 0.000 min
 Lab File: BM042933.D
 Acq: 20 Nov 2023 18:06

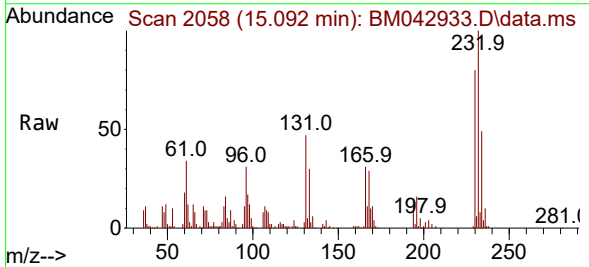
Instrument :
 BNA_M
 ClientSampleId :
 SLCS867



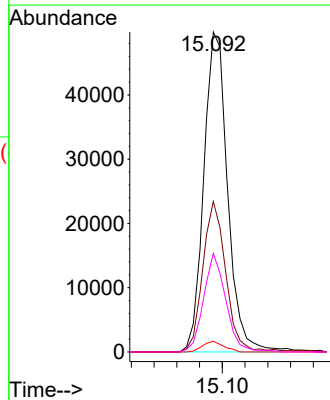
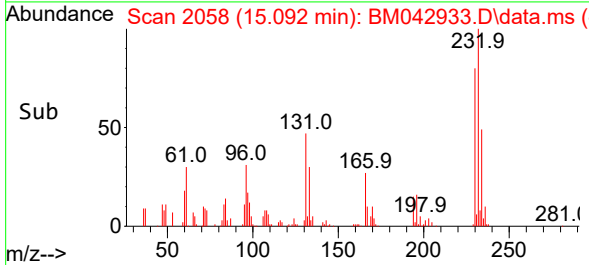
Tgt Ion:165 Resp: 78520
 Ion Ratio Lower Upper
 165 100
 63 95.6 83.5 125.3
 182 3.1 2.4 3.6

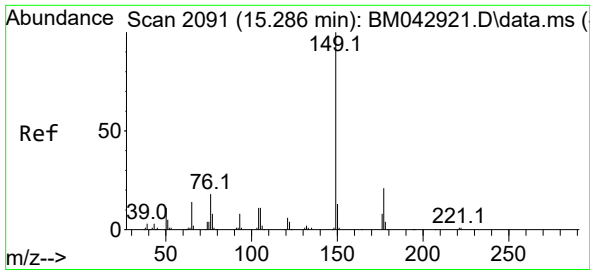


#58
 2,3,4,6-Tetrachlorophenol
 Concen: 30.552 ng/ul
 RT: 15.092 min Scan# 2058
 Delta R.T. 0.000 min
 Lab File: BM042933.D
 Acq: 20 Nov 2023 18:06



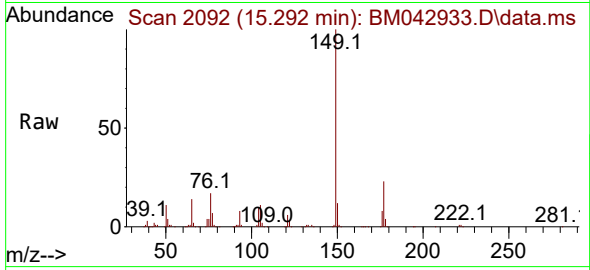
Tgt Ion:232 Resp: 72473
 Ion Ratio Lower Upper
 232 100
 131 47.0 38.9 58.3
 130 3.3 1.9 2.9#
 166 30.8 23.9 35.9



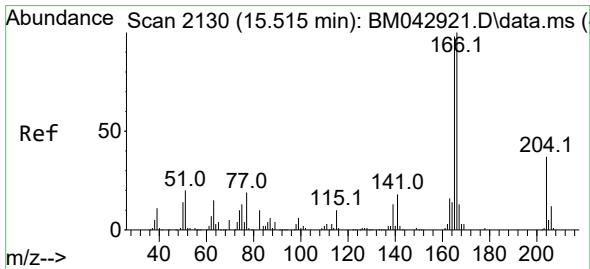
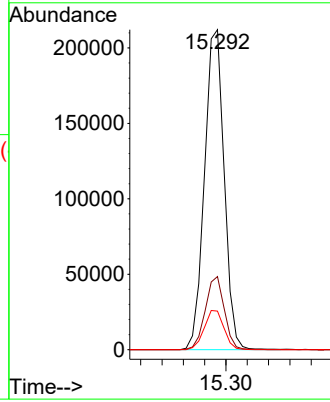
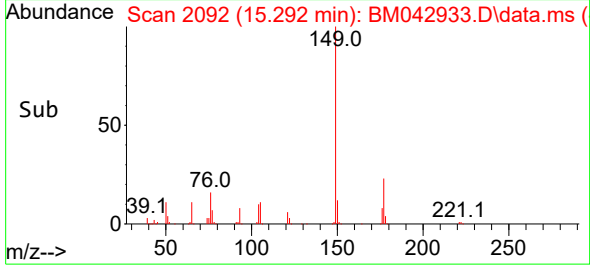


#59
 Diethylphthalate
 Concen: 28.492 ng/ul
 RT: 15.292 min Scan# 2092
 Delta R.T. 0.000 min
 Lab File: BM042933.D
 Acq: 20 Nov 2023 18:06

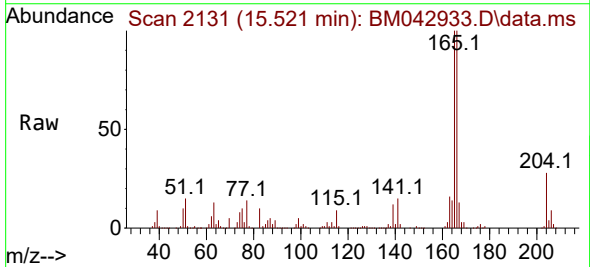
Instrument :
 BNA_M
 ClientSampleId :
 SLCS867



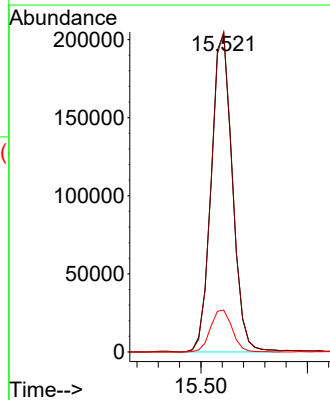
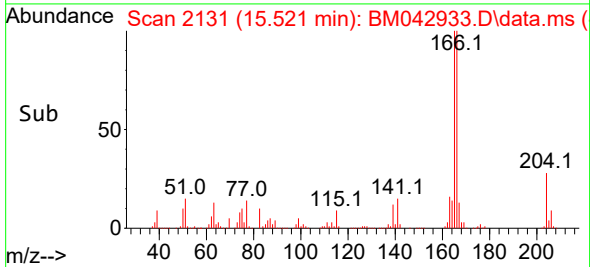
Tgt Ion:149 Resp: 272077
 Ion Ratio Lower Upper
 149 100
 177 22.9 17.0 25.6
 150 12.0 9.7 14.5

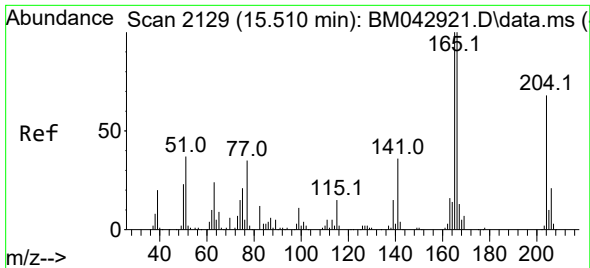


#61
 Fluorene
 Concen: 31.437 ng/ul
 RT: 15.521 min Scan# 2131
 Delta R.T. 0.000 min
 Lab File: BM042933.D
 Acq: 20 Nov 2023 18:06



Tgt Ion:166 Resp: 280841
 Ion Ratio Lower Upper
 166 100
 165 100.5 79.3 118.9
 167 13.1 10.6 15.8

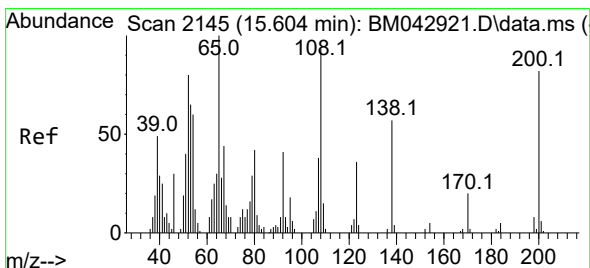
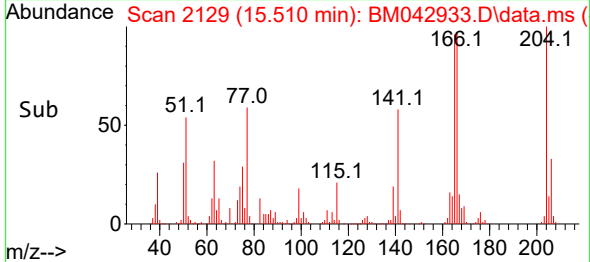
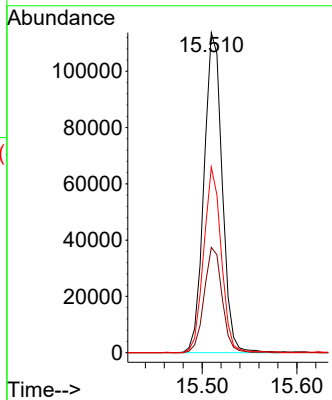
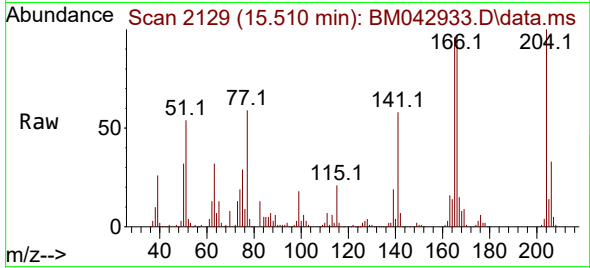




#62
 4-Chlorophenyl-phenylether
 Concen: 31.371 ng/ul
 RT: 15.510 min Scan# 2129
 Delta R.T. -0.006 min
 Lab File: BM042933.D
 Acq: 20 Nov 2023 18:06

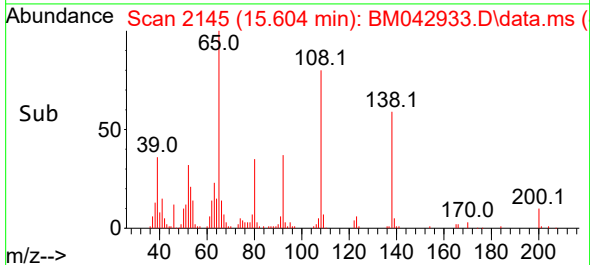
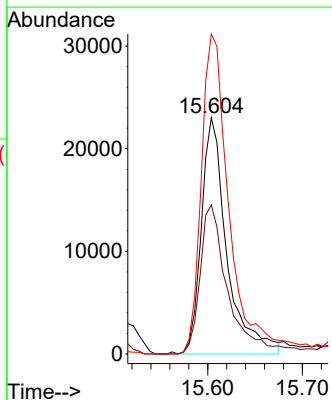
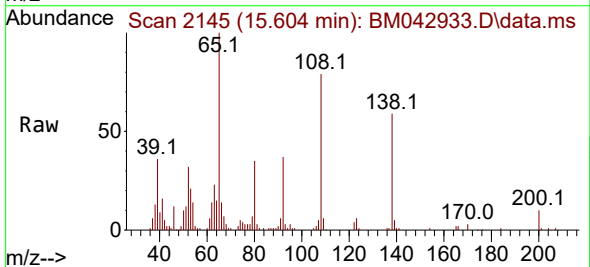
Instrument :
 BNA_M
 ClientSampleId :
 SLCS867

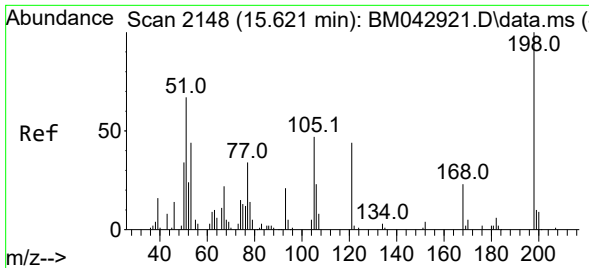
Tgt Ion:204 Resp: 151037
 Ion Ratio Lower Upper
 204 100
 206 32.9 27.0 40.4
 141 58.0 46.0 69.0



#63
 4-Nitroaniline
 Concen: 33.902 ng/ul
 RT: 15.604 min Scan# 2145
 Delta R.T. -0.006 min
 Lab File: BM042933.D
 Acq: 20 Nov 2023 18:06

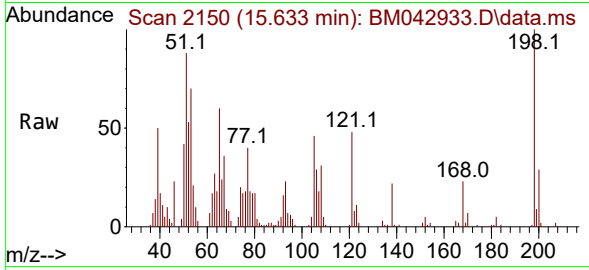
Tgt Ion:138 Resp: 43240
 Ion Ratio Lower Upper
 138 100
 92 63.1 47.4 71.0
 108 135.5 129.5 194.3



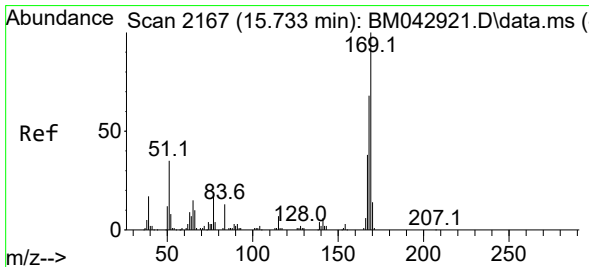
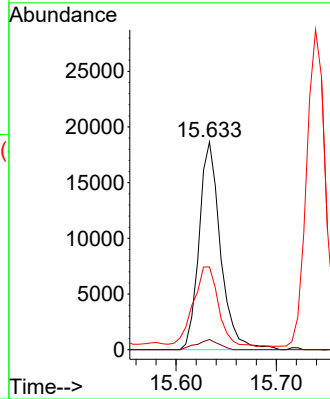
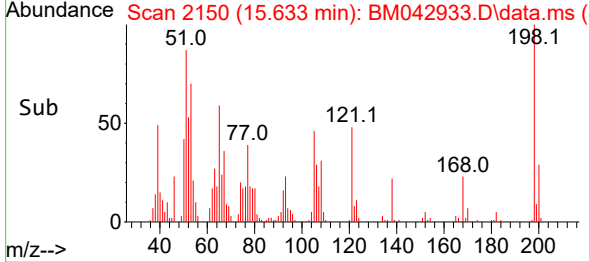


#66
 4,6-Dinitro-2-methylphenol
 Concen: 16.424 ng/ul
 RT: 15.633 min Scan# 2148
 Delta R.T. 0.006 min
 Lab File: BM042933.D
 Acq: 20 Nov 2023 18:06

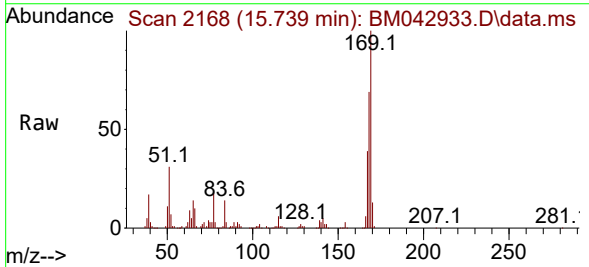
Instrument :
 BNA_M
 ClientSampleId :
 SLCS867



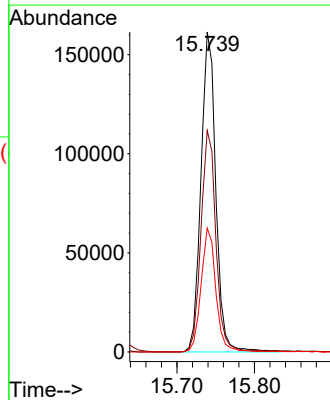
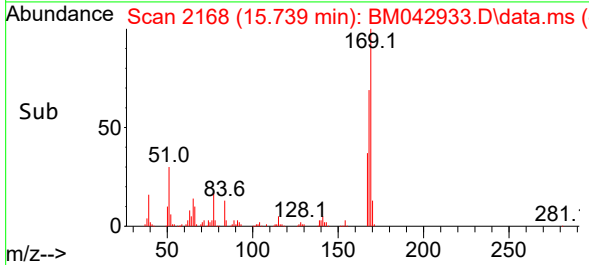
Tgt Ion:198 Resp: 27763
 Ion Ratio Lower Upper
 198 100
 182 4.9 3.4 5.0
 77 39.8 26.9 40.3

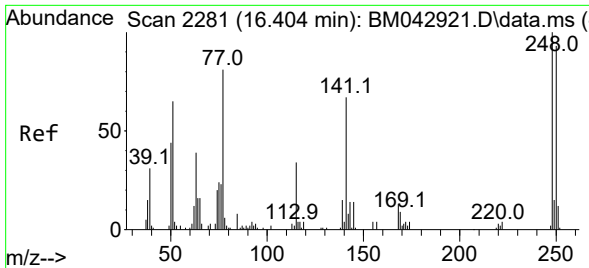


#67
 N-Nitrosodiphenylamine
 Concen: 31.304 ng/ul
 RT: 15.739 min Scan# 2168
 Delta R.T. 0.000 min
 Lab File: BM042933.D
 Acq: 20 Nov 2023 18:06



Tgt Ion:169 Resp: 215205
 Ion Ratio Lower Upper
 169 100
 168 69.2 55.8 83.6
 167 38.7 31.4 47.2



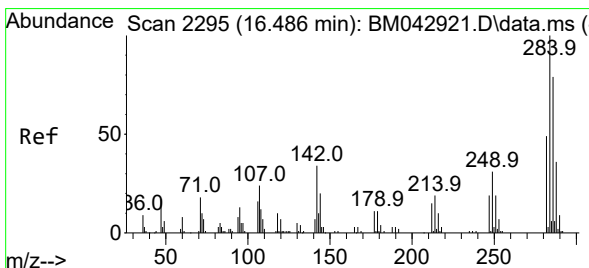
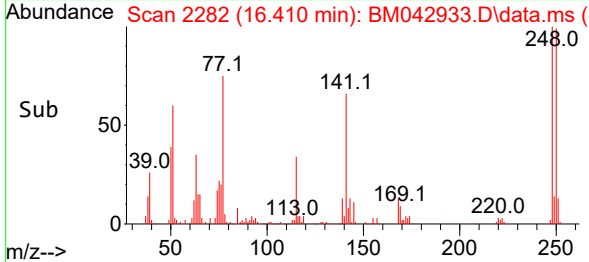
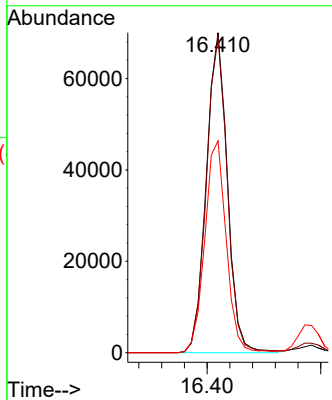
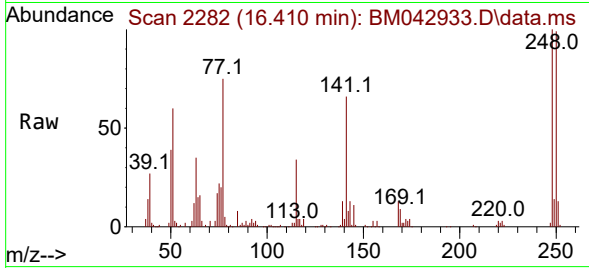


#68
 4-Bromophenyl-phenylether
 Concen: 30.957 ng/ul
 RT: 16.410 min Scan# 21
 Delta R.T. 0.000 min
 Lab File: BM042933.D
 Acq: 20 Nov 2023 18:06

Instrument :
 BNA_M
 ClientSampleId :
 SLCS867

Tgt Ion:248 Resp: 90321

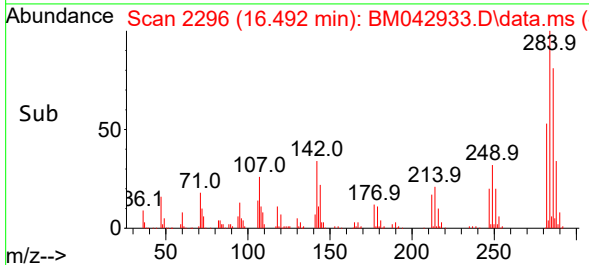
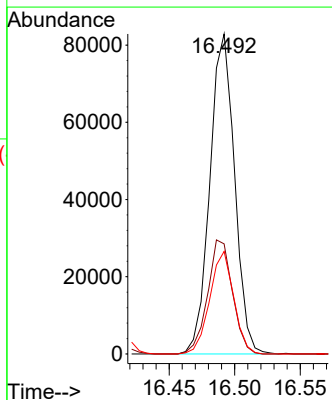
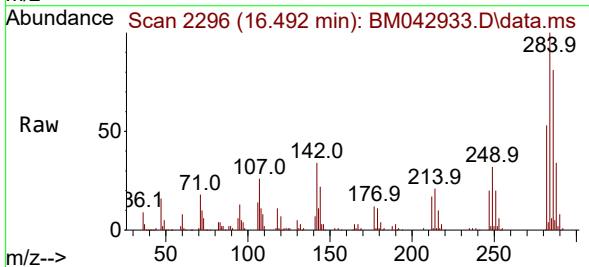
Ion	Ratio	Lower	Upper
248	100		
250	98.6	84.3	126.5
141	66.2	60.1	90.1

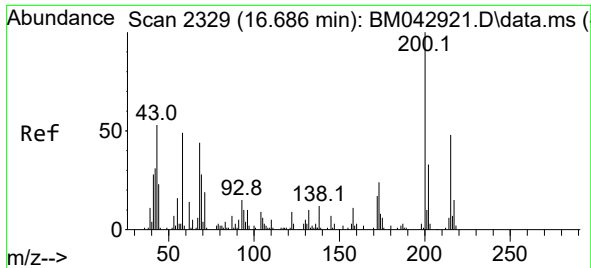


#69
 Hexachlorobenzene
 Concen: 30.446 ng/ul
 RT: 16.492 min Scan# 2296
 Delta R.T. 0.000 min
 Lab File: BM042933.D
 Acq: 20 Nov 2023 18:06

Tgt Ion:284 Resp: 108595

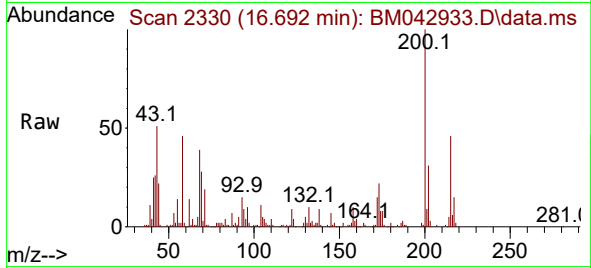
Ion	Ratio	Lower	Upper
284	100		
142	34.4	30.5	45.7
249	32.0	25.3	37.9



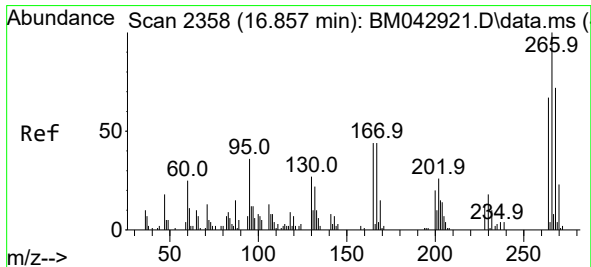
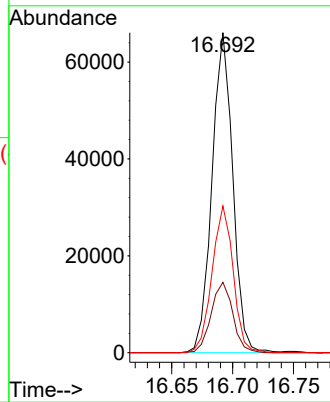
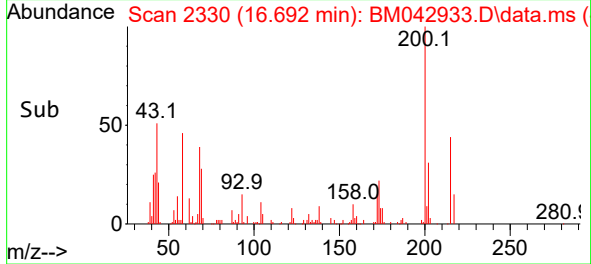


#70
 Atrazine
 Concen: 29.573 ng/u1
 RT: 16.692 min Scan# 21
 Delta R.T. 0.000 min
 Lab File: BM042933.D
 Acq: 20 Nov 2023 18:06

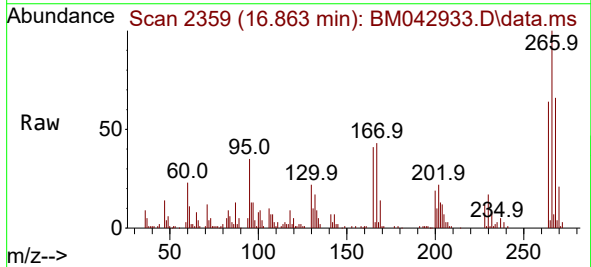
Instrument :
 BNA_M
 ClientSampleId :
 SLCS867



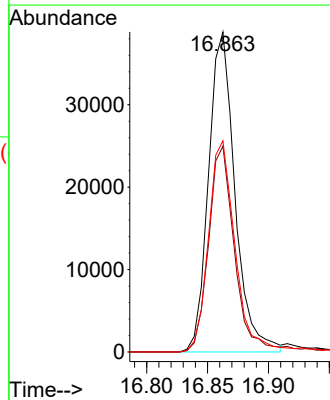
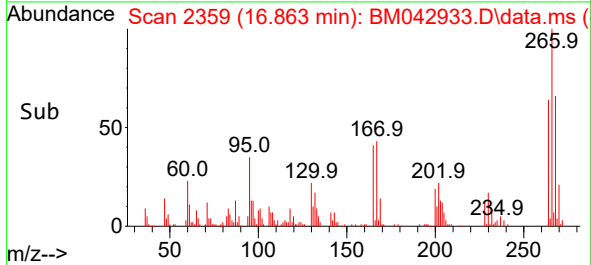
Tgt Ion:200 Resp: 78312
 Ion Ratio Lower Upper
 200 100
 173 22.0 19.8 29.6
 215 45.9 38.2 57.2

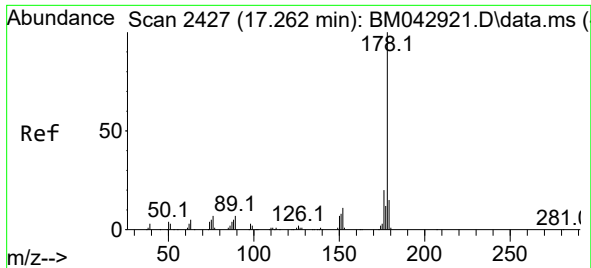


#71
 Pentachlorophenol
 Concen: 28.561 ng/u1
 RT: 16.863 min Scan# 2359
 Delta R.T. 0.000 min
 Lab File: BM042933.D
 Acq: 20 Nov 2023 18:06



Tgt Ion:266 Resp: 58662
 Ion Ratio Lower Upper
 266 100
 264 64.3 50.3 75.5
 268 66.0 52.1 78.1

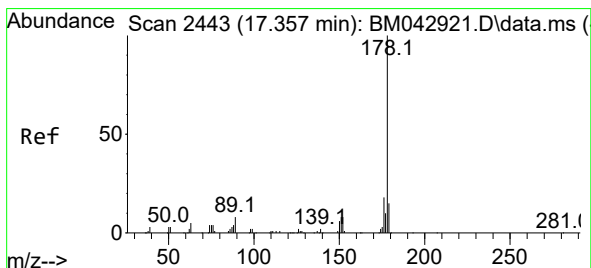
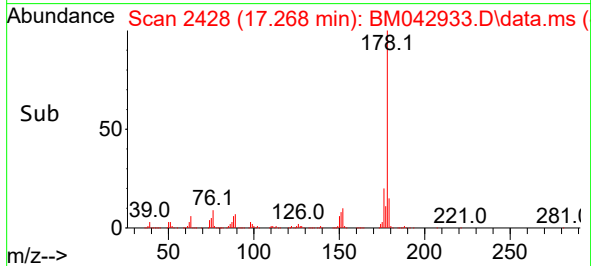
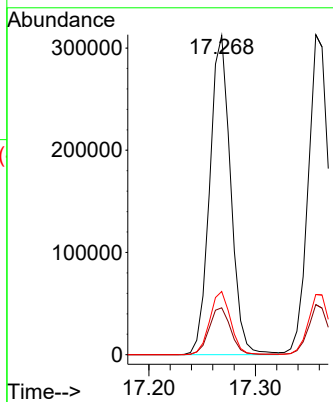
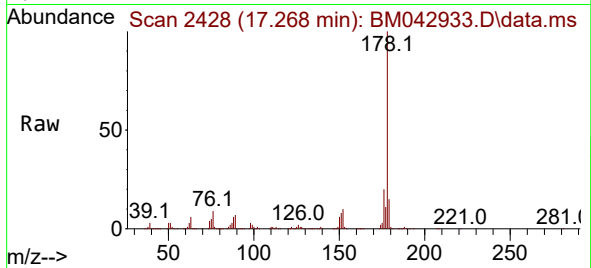




#72
 Phenanthrene
 Concen: 31.095 ng/u1
 RT: 17.268 min Scan# 2428
 Delta R.T. 0.000 min
 Lab File: BM042933.D
 Acq: 20 Nov 2023 18:06

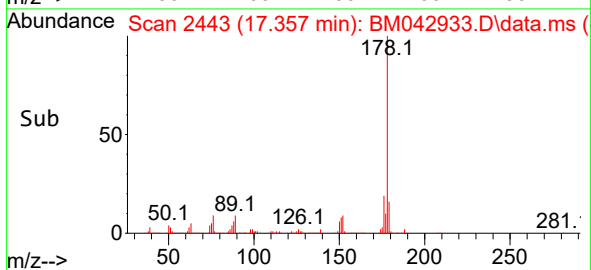
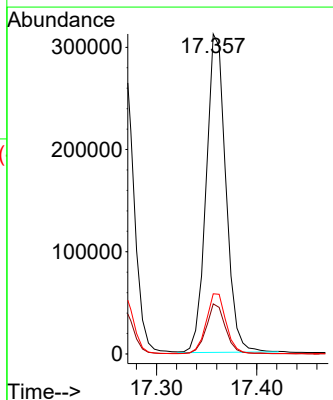
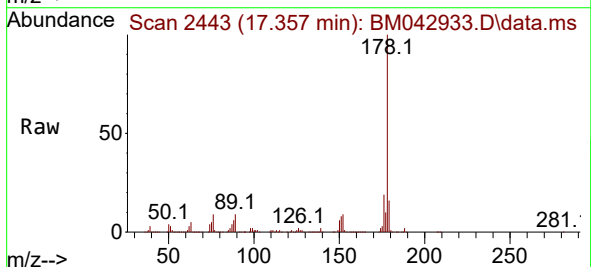
Instrument :
 BNA_M
 ClientSampleId :
 SLCS867

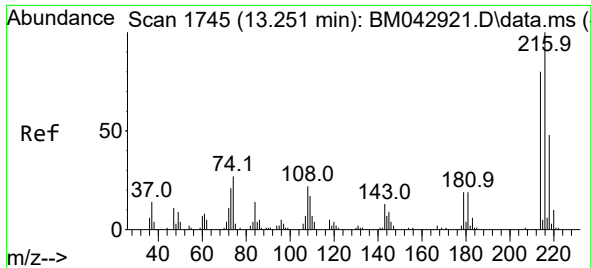
Tgt Ion:178 Resp: 425807
 Ion Ratio Lower Upper
 178 100
 179 14.7 11.4 17.2
 176 19.8 15.5 23.3



#74
 Anthracene
 Concen: 30.904 ng/u1
 RT: 17.357 min Scan# 2443
 Delta R.T. -0.006 min
 Lab File: BM042933.D
 Acq: 20 Nov 2023 18:06

Tgt Ion:178 Resp: 425661
 Ion Ratio Lower Upper
 178 100
 179 15.7 12.0 18.0
 176 18.8 15.7 23.5

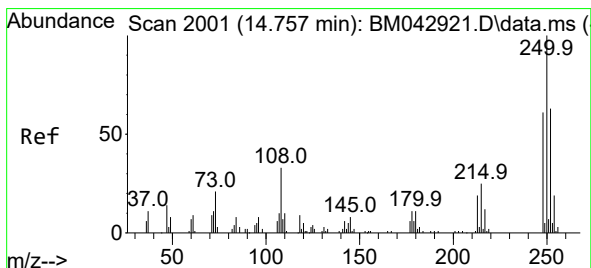
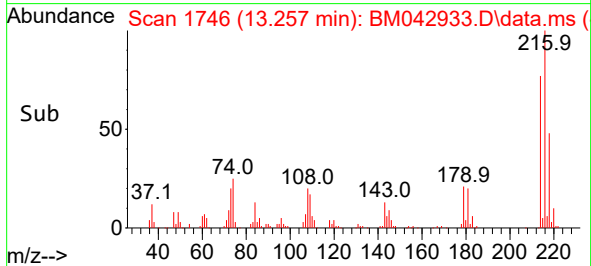
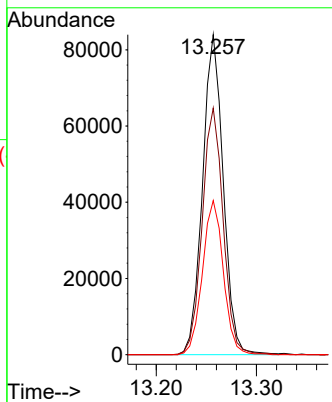
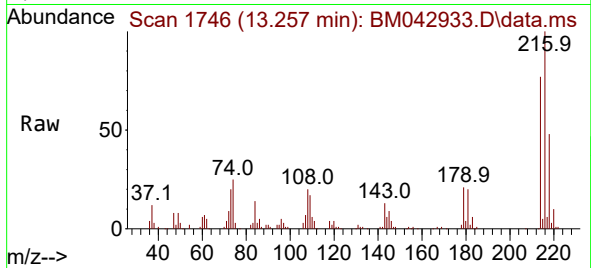




#75
 1,2,3,4-Tetrachlorobenzene
 Concen: 31.255 ng/uL
 RT: 13.257 min Scan# 11
 Delta R.T. 0.000 min
 Lab File: BM042933.D
 Acq: 20 Nov 2023 18:06

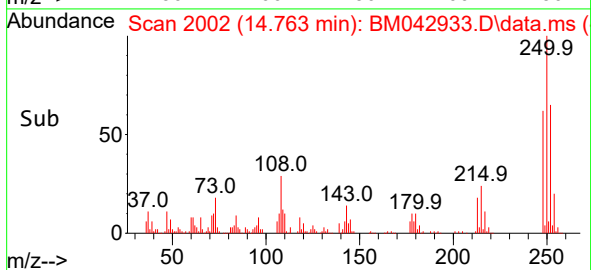
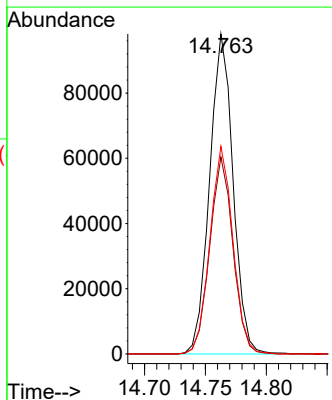
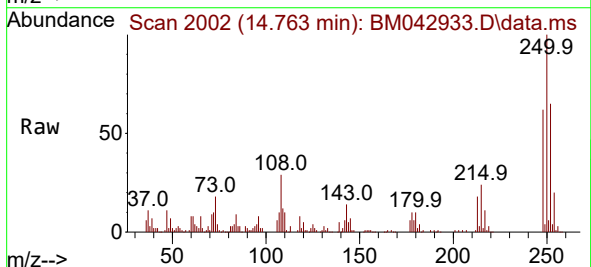
Instrument :
 BNA_M
 ClientSampleId :
 SLCS867

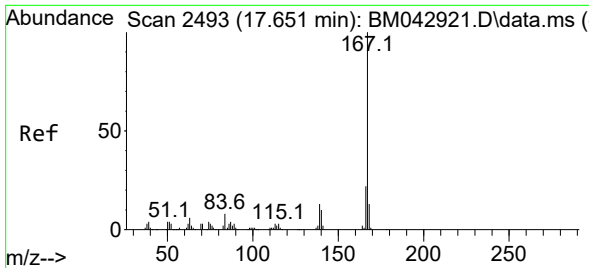
Tgt Ion:216 Resp: 121140
 Ion Ratio Lower Upper
 216 100
 214 77.0 62.6 94.0
 218 48.1 39.3 58.9



#76
 Pentachlorobenzene
 Concen: 32.322 ng/uL
 RT: 14.763 min Scan# 2002
 Delta R.T. 0.000 min
 Lab File: BM042933.D
 Acq: 20 Nov 2023 18:06

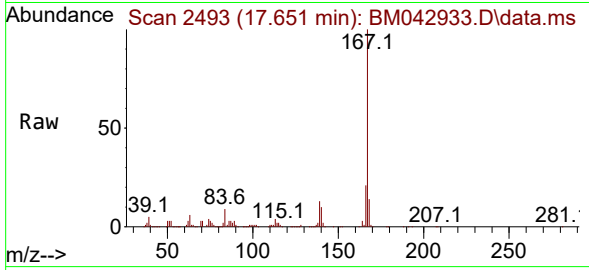
Tgt Ion:250 Resp: 131447
 Ion Ratio Lower Upper
 250 100
 248 61.6 51.0 76.6
 252 64.9 51.8 77.8



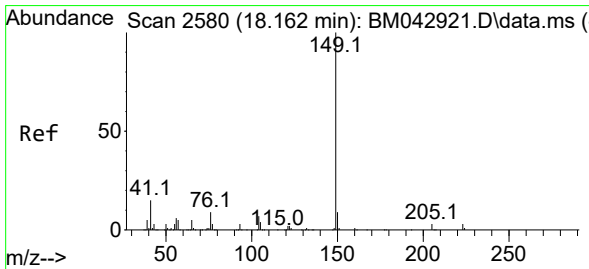
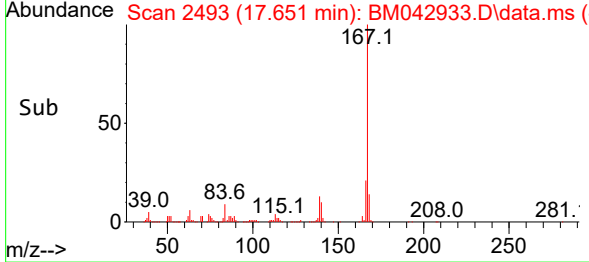
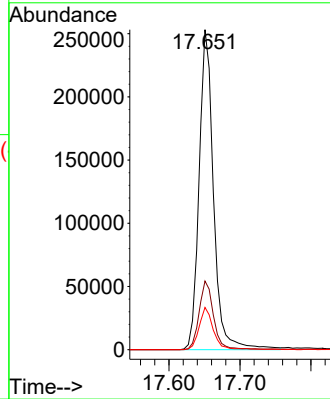


#77
 Carbazole
 Concen: 31.612 ng/ul
 RT: 17.651 min Scan# 2493
 Delta R.T. -0.006 min
 Lab File: BM042933.D
 Acq: 20 Nov 2023 18:06

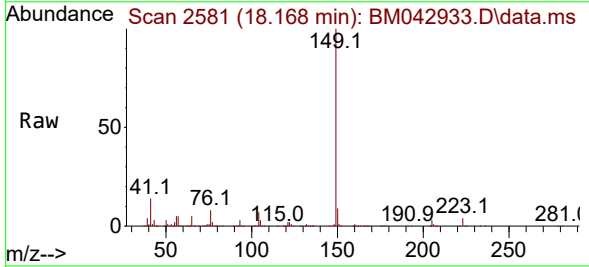
Instrument :
 BNA_M
 ClientSampleId :
 SLCS867



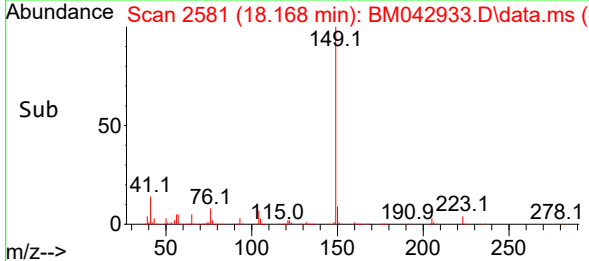
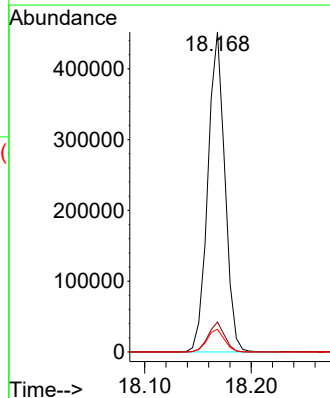
Tgt Ion:167 Resp: 359527
 Ion Ratio Lower Upper
 167 100
 166 21.5 17.2 25.8
 139 13.2 10.8 16.2

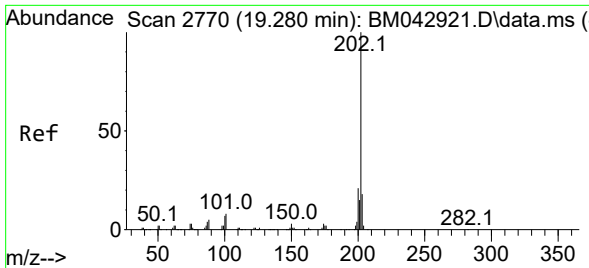


#78
 Di-n-butylphthalate
 Concen: 30.127 ng/ul
 RT: 18.168 min Scan# 2581
 Delta R.T. 0.000 min
 Lab File: BM042933.D
 Acq: 20 Nov 2023 18:06



Tgt Ion:149 Resp: 501039
 Ion Ratio Lower Upper
 149 100
 150 9.3 7.7 11.5
 104 7.1 5.3 7.9



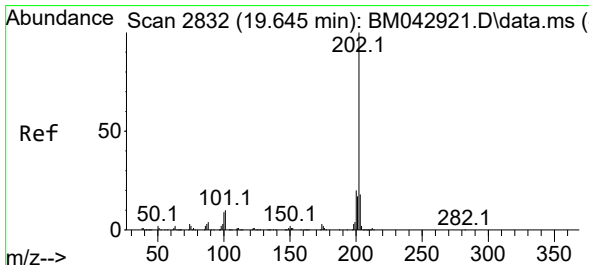
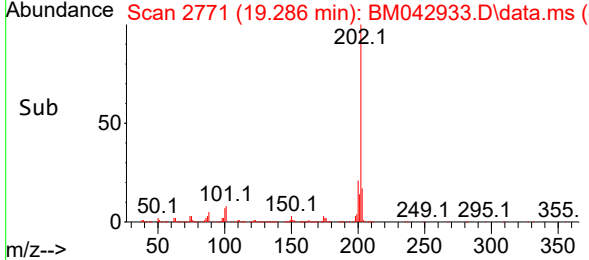
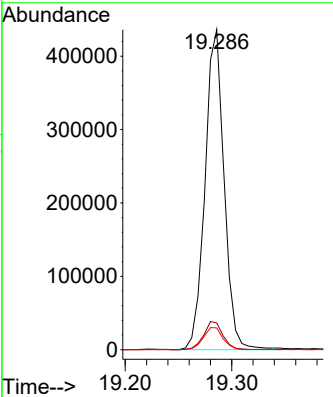
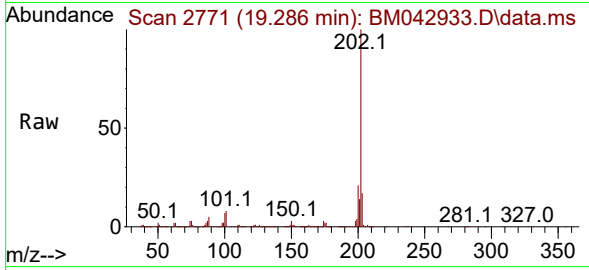


#80
 Fluoranthene
 Concen: 28.276 ng/u1
 RT: 19.286 min Scan# 2771
 Delta R.T. 0.000 min
 Lab File: BM042933.D
 Acq: 20 Nov 2023 18:06

Instrument : BNA_M
 ClientSampleId : SLCS867

Tgt Ion:202 Resp: 541110

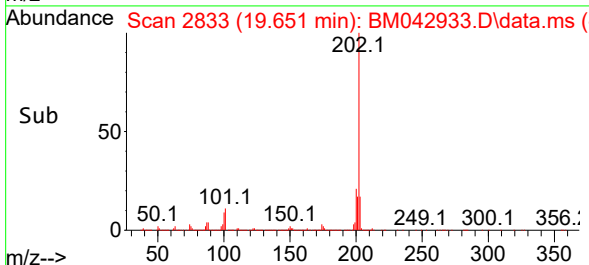
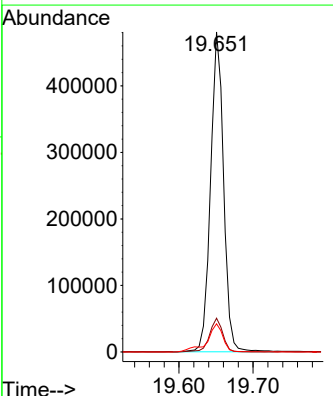
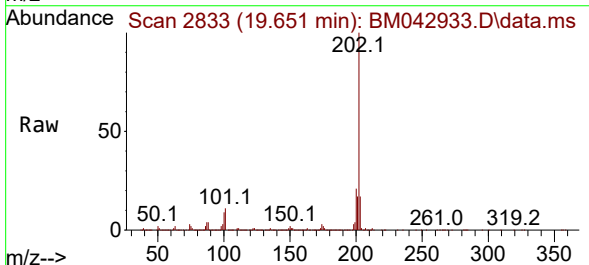
Ion	Ratio	Lower	Upper
202	100		
101	8.3	6.6	9.8
100	6.8	5.6	8.4

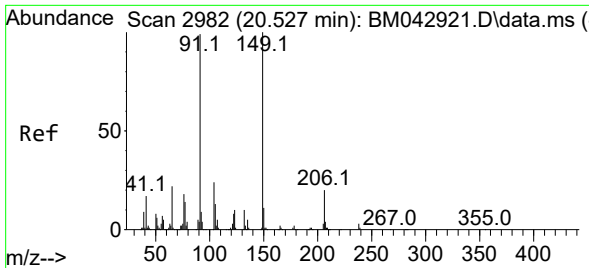


#82
 Pyrene
 Concen: 28.863 ng/u1
 RT: 19.651 min Scan# 2833
 Delta R.T. 0.000 min
 Lab File: BM042933.D
 Acq: 20 Nov 2023 18:06

Tgt Ion:202 Resp: 585657

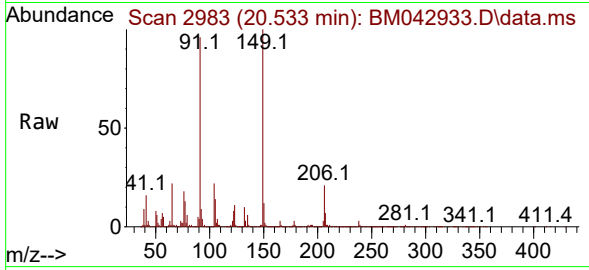
Ion	Ratio	Lower	Upper
202	100		
101	10.6	8.1	12.1
100	8.8	6.9	10.3



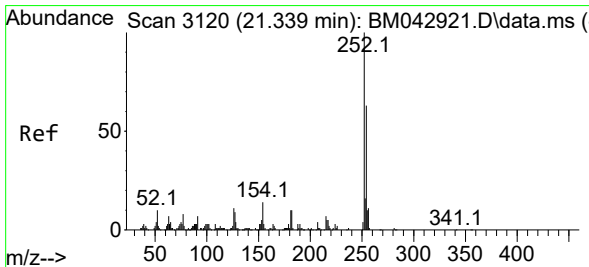
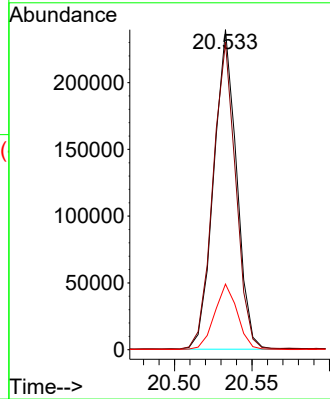
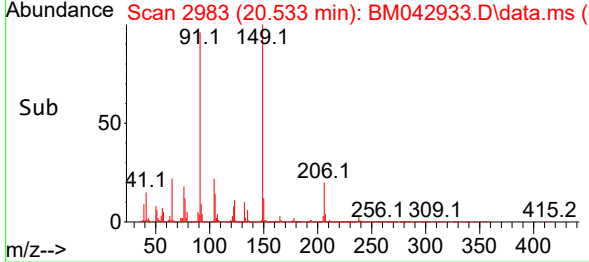


#83
 Butylbenzylphthalate
 Concen: 28.292 ng/ul
 RT: 20.533 min Scan# 2982
 Delta R.T. -0.006 min
 Lab File: BM042933.D
 Acq: 20 Nov 2023 18:06

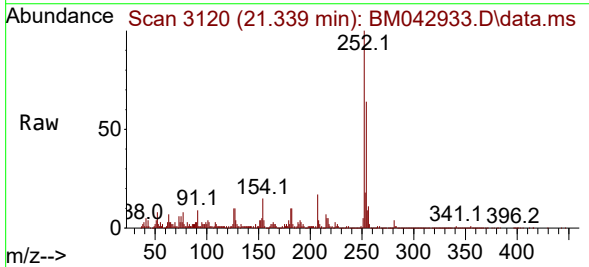
Instrument :
 BNA_M
 ClientSampleId :
 SLCS867



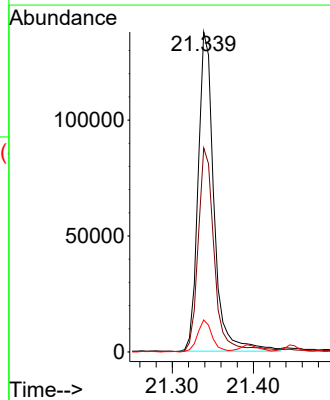
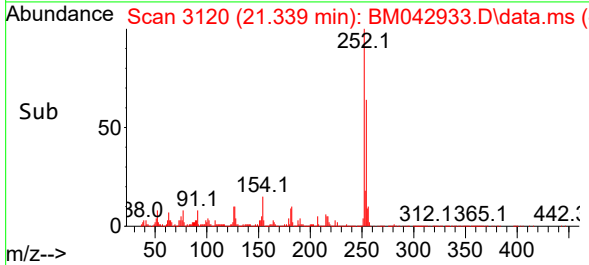
Tgt Ion:149 Resp: 245196
 Ion Ratio Lower Upper
 149 100
 91 96.1 69.3 103.9
 206 20.5 16.6 25.0

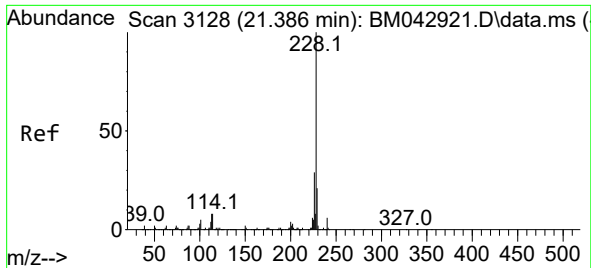


#84
 3,3'-Dichlorobenzidine
 Concen: 28.514 ng/ul
 RT: 21.339 min Scan# 3120
 Delta R.T. -0.006 min
 Lab File: BM042933.D
 Acq: 20 Nov 2023 18:06



Tgt Ion:252 Resp: 187042
 Ion Ratio Lower Upper
 252 100
 254 63.8 51.8 77.6
 126 10.0 7.8 11.8



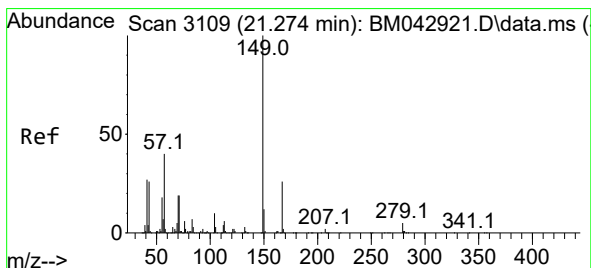
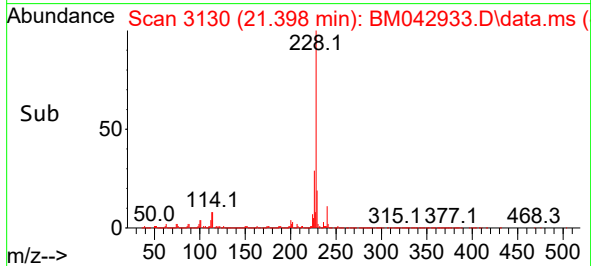
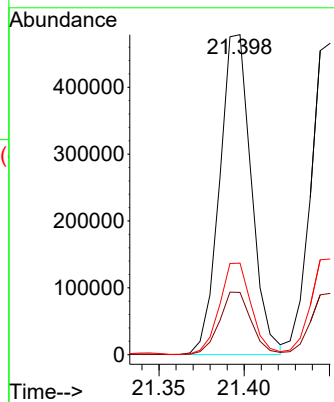
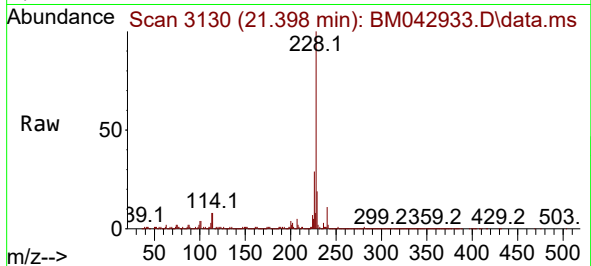


#85
 Benzo(a)anthracene
 Concen: 30.828 ng/uI
 RT: 21.398 min Scan# 3128
 Delta R.T. 0.000 min
 Lab File: BM042933.D
 Acq: 20 Nov 2023 18:06

Instrument :
 BNA_M
 ClientSampleId :
 SLCS867

Tgt Ion:228 Resp: 620235

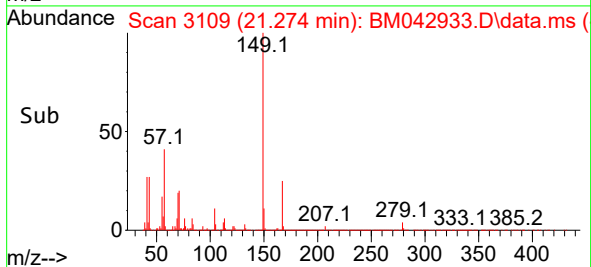
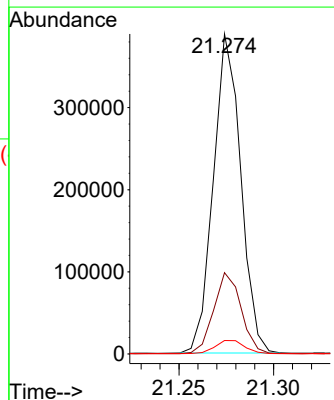
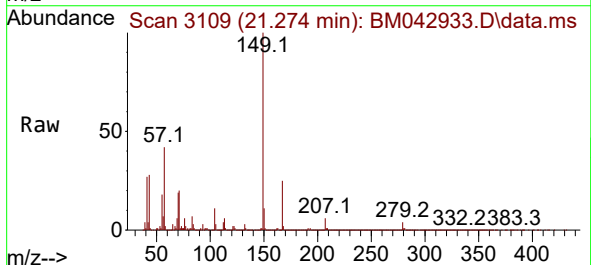
Ion	Ratio	Lower	Upper
228	100		
229	19.4	15.8	23.6
226	28.6	22.5	33.7

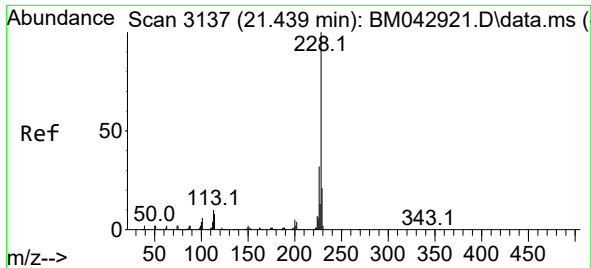


#86
 Bis(2-ethylhexyl)phthalate
 Concen: 29.771 ng/uI
 RT: 21.274 min Scan# 3109
 Delta R.T. -0.006 min
 Lab File: BM042933.D
 Acq: 20 Nov 2023 18:06

Tgt Ion:149 Resp: 391467

Ion	Ratio	Lower	Upper
149	100		
167	25.4	20.6	31.0
279	4.2	3.5	5.3



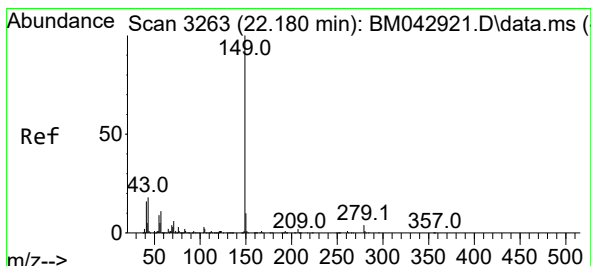
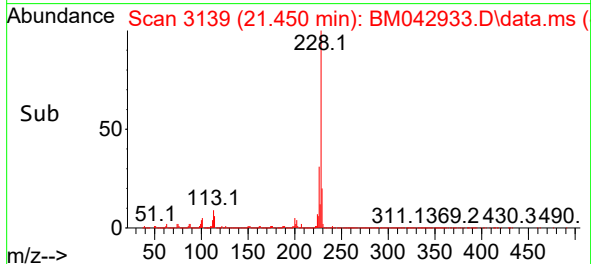
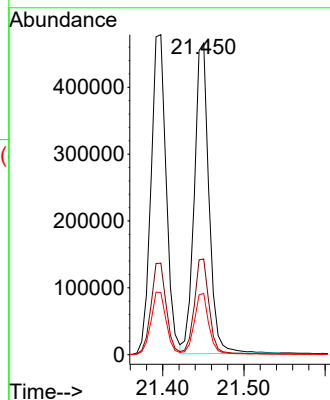
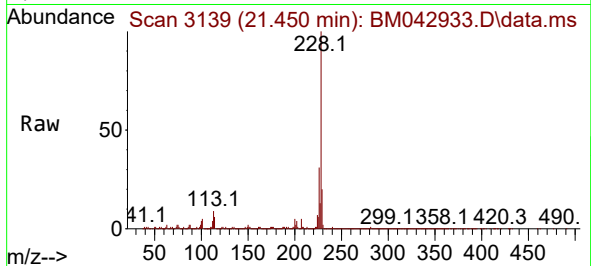


#87
 Chrysene
 Concen: 30.007 ng/ul
 RT: 21.450 min Scan# 3137
 Delta R.T. 0.000 min
 Lab File: BM042933.D
 Acq: 20 Nov 2023 18:06

Instrument :
 BNA_M
 ClientSampleId :
 SLCS867

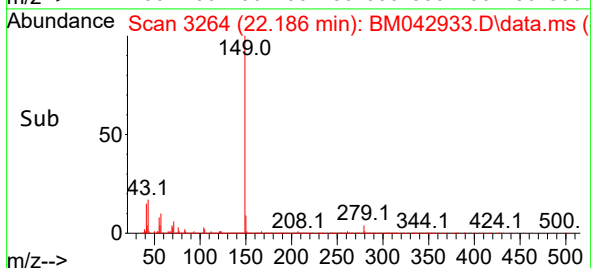
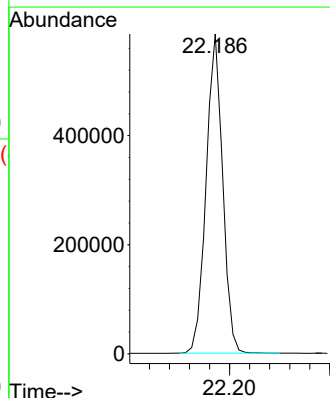
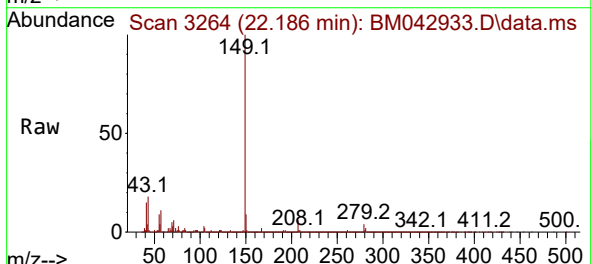
Tgt Ion:228 Resp: 585501

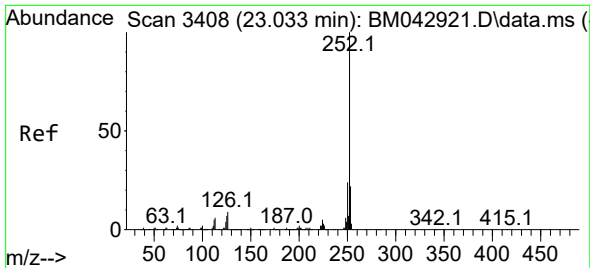
Ion	Ratio	Lower	Upper
228	100		
226	30.7	24.3	36.5
229	19.7	15.7	23.5



#89
 Di-n-octyl phthalate
 Concen: 29.674 ng/ul
 RT: 22.186 min Scan# 3264
 Delta R.T. -0.006 min
 Lab File: BM042933.D
 Acq: 20 Nov 2023 18:06

Tgt Ion:149 Resp: 671341

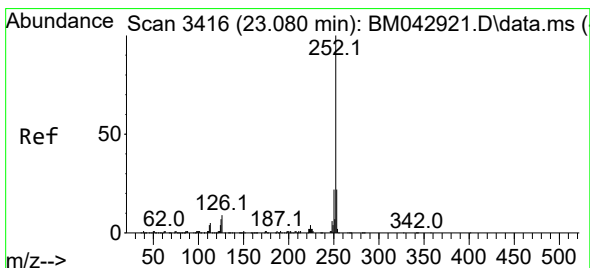
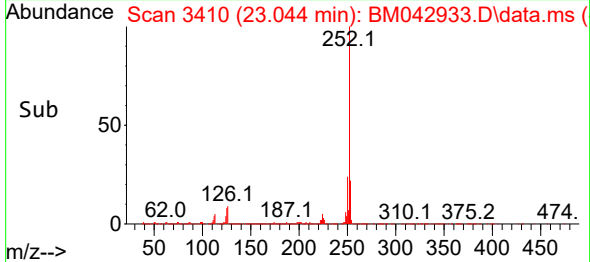
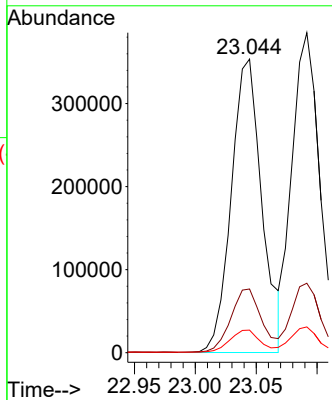
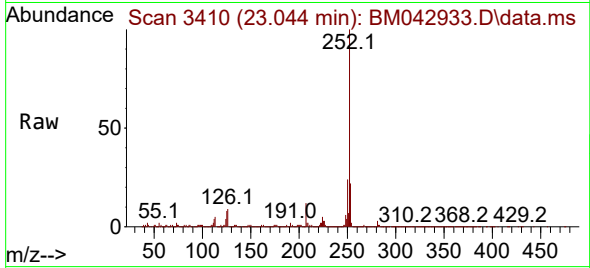




#90
 Benzo(b)fluoranthene
 Concen: 32.286 ng/ul
 RT: 23.044 min Scan# 3408
 Delta R.T. 0.000 min
 Lab File: BM042933.D
 Acq: 20 Nov 2023 18:06

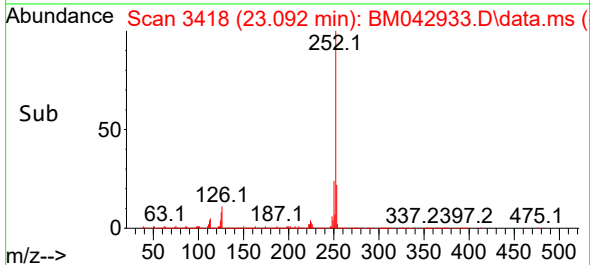
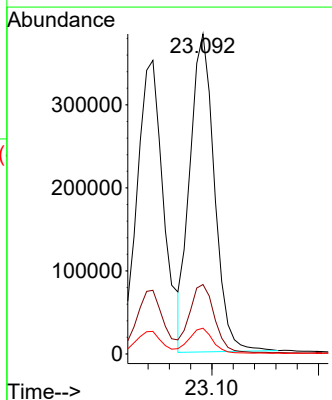
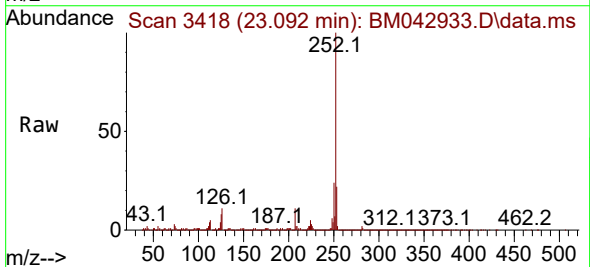
Instrument :
 BNA_M
 ClientSampleId :
 SLCS867

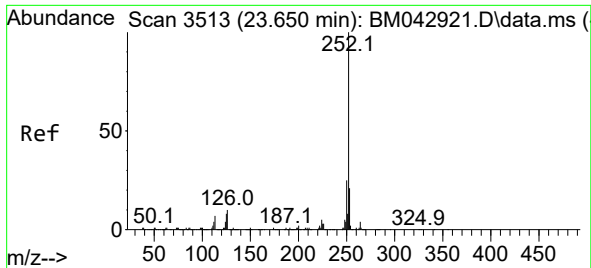
Tgt Ion:252 Resp: 617091
 Ion Ratio Lower Upper
 252 100
 253 21.7 17.0 25.6
 125 7.7 5.2 7.8



#91
 Benzo(k)fluoranthene
 Concen: 30.089 ng/ul
 RT: 23.092 min Scan# 3418
 Delta R.T. 0.000 min
 Lab File: BM042933.D
 Acq: 20 Nov 2023 18:06

Tgt Ion:252 Resp: 612196
 Ion Ratio Lower Upper
 252 100
 253 21.7 17.5 26.3
 125 8.1 5.5 8.3



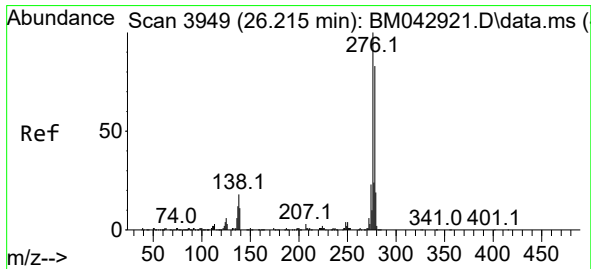
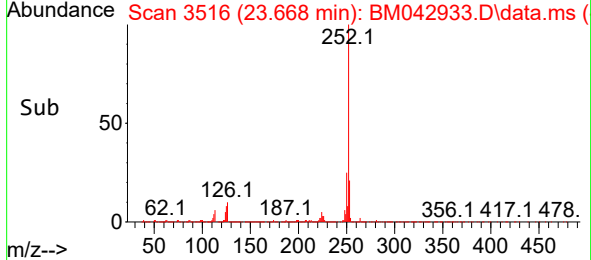
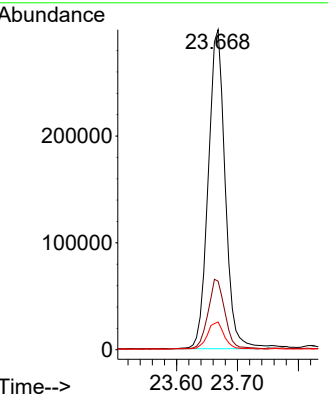
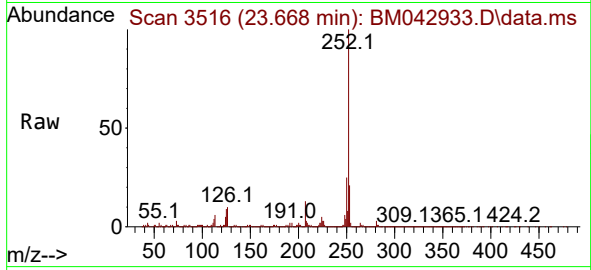


#93
 Benzo(a)pyrene
 Concen: 30.986 ng/u1
 RT: 23.668 min Scan# 31
 Delta R.T. 0.006 min
 Lab File: BM042933.D
 Acq: 20 Nov 2023 18:06

Instrument : BNA_M
 ClientSampleId : SLCS867

Tgt Ion:252 Resp: 577102

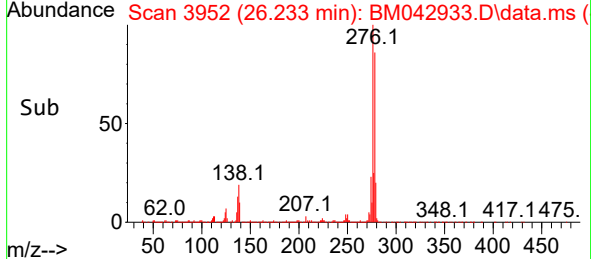
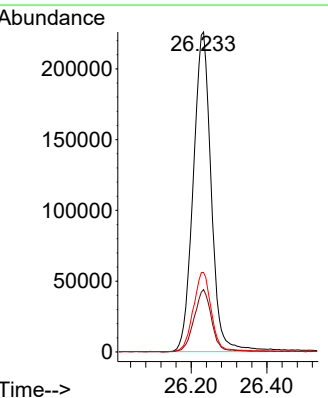
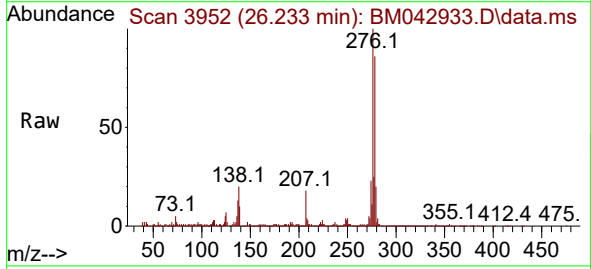
Ion	Ratio	Lower	Upper
252	100		
253	21.4	17.0	25.6
125	8.7	6.3	9.5

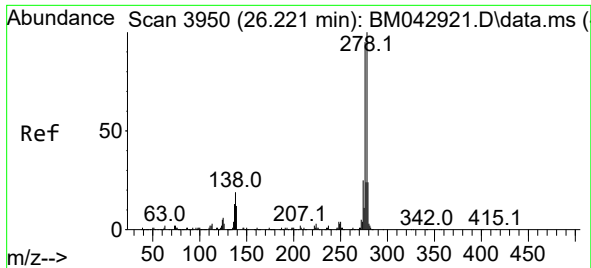


#94
 Indeno(1,2,3-cd)pyrene
 Concen: 32.009 ng/u1
 RT: 26.233 min Scan# 3952
 Delta R.T. 0.006 min
 Lab File: BM042933.D
 Acq: 20 Nov 2023 18:06

Tgt Ion:276 Resp: 740915

Ion	Ratio	Lower	Upper
276	100		
138	19.5	13.8	20.8
277	24.9	19.7	29.5

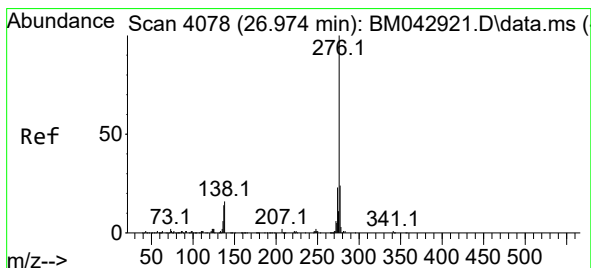
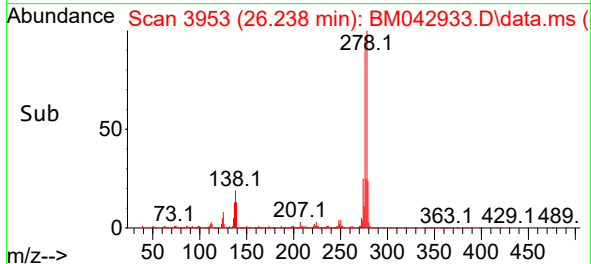
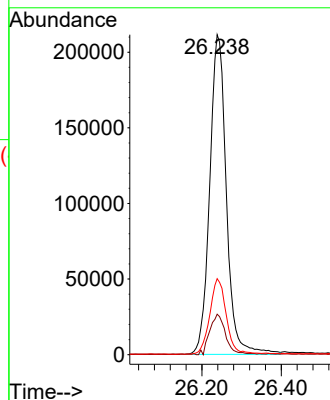
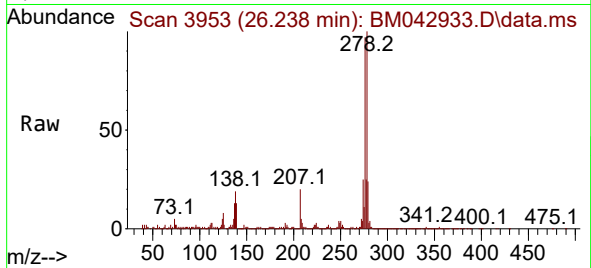




#95
 Dibenzo(a,h)anthracene
 Concen: 32.154 ng/ul
 RT: 26.238 min Scan# 3953
 Delta R.T. 0.000 min
 Lab File: BM042933.D
 Acq: 20 Nov 2023 18:06

Instrument :
 BNA_M
 ClientSampleId :
 SLCS867

Tgt Ion:278 Resp: 617045
 Ion Ratio Lower Upper
 278 100
 139 12.7 9.0 13.4
 279 23.7 18.8 28.2



#96
 Benzo(g,h,i)perylene
 Concen: 30.807 ng/ul
 RT: 26.997 min Scan# 4082
 Delta R.T. 0.006 min
 Lab File: BM042933.D
 Acq: 20 Nov 2023 18:06

Tgt Ion:276 Resp: 566244
 Ion Ratio Lower Upper
 276 100
 138 15.7 13.0 19.6
 277 23.6 18.4 27.6

