

Data Path : Z:\SVOASRV\HPCHEM1\BNA M\DATA\BM112619\
 Data File : BM023895.D
 Acq On : 26 Nov 2019 16:23
 Operator : JU
 Sample : K5983-05
 Misc :
 ALS Vial : 10 Sample Multiplier: 1

Instrument :
 BNA_M
 ClientSampleId :
 SVOC-GPC-BLANK

Integration Parameters: LSCINT.P

Integrator: RTE
 Smoothing : OFF
 Sampling : 1
 Start Thrs: 0.2
 Stop Thrs : 0

Filtering: 5
 Min Area: 0.1 % of largest Peak
 Max Peaks: 100
 Peak Location: TOP

If leading or trailing edge < 100 prefer < Baseline drop else tangent >
 Peak separation: 5

Method : Z:\SVOASRV\HPCHEM1\BNA_M\METHODS\SOM-EPA-BM111119MA.M
 Title : SVOA CALIBRATION

Signal : TIC

peak #	R.T. min	first scan	max scan	last scan	PK TY	peak height	corr. area	corr. % max.	% of total
1	3.752	144	147	150	rVB4	11728	13434	0.29%	0.065%
2	4.651	298	300	303	rVB4	6089	4803	0.10%	0.023%
3	4.704	307	309	311	rBV2	5231	5421	0.12%	0.026%
4	5.287	405	408	411	rBV5	3009	5114	0.11%	0.025%
5	6.551	621	623	628	rVB5	5598	7171	0.15%	0.035%
6	7.075	710	712	717	rVB4	3915	6532	0.14%	0.032%
7	7.287	746	748	752	rVB4	4262	5049	0.11%	0.024%
8	7.392	761	766	769	rBV7	4445	8390	0.18%	0.041%
9	7.498	777	784	798	rBV	1057532	1706462	36.69%	8.263%
10	7.734	821	824	828	rVB5	4523	5826	0.13%	0.028%
11	8.151	889	895	899	rVB7	4092	7114	0.15%	0.034%
12	8.457	945	947	952	rVB5	4759	6485	0.14%	0.031%
13	8.875	1015	1018	1022	rVB4	3926	5117	0.11%	0.025%
14	8.939	1026	1029	1032	rBV4	2678	4904	0.11%	0.024%
15	9.157	1063	1066	1068	rBV3	6070	6586	0.14%	0.032%
16	9.292	1083	1089	1093	rBV6	3776	8754	0.19%	0.042%
17	9.439	1110	1114	1116	rVB5	3944	5581	0.12%	0.027%
18	10.269	1248	1255	1273	rBV	1440895	2564798	55.14%	12.420%
19	14.157	1910	1916	1928	rBV	2424964	3687072	79.27%	17.854%
20	14.363	1948	1951	1956	rBV5	2945	5353	0.12%	0.026%
21	15.133	2077	2082	2089	rBV7	3735	9755	0.21%	0.047%
22	15.216	2093	2096	2102	rBV5	2584	4898	0.11%	0.024%
23	16.063	2238	2240	2243	rVB3	5487	6815	0.15%	0.033%
24	16.280	2272	2277	2280	rBV4	3391	5539	0.12%	0.027%
25	16.327	2284	2285	2290	rVB2	7100	7357	0.16%	0.036%
26	16.627	2332	2336	2339	rBV3	3175	5344	0.11%	0.026%
27	16.710	2341	2350	2352	rVV4	9885	21235	0.46%	0.103%
28	16.733	2352	2354	2357	rVB4	5720	5504	0.12%	0.027%
29	16.768	2357	2360	2362	rBV4	5485	5102	0.11%	0.025%
30	16.910	2378	2384	2395	rBV	2230059	3303082	71.01%	15.995%
31	17.557	2489	2494	2495	rBV3	3788	5555	0.12%	0.027%
32	17.774	2528	2531	2532	rBV2	4619	5167	0.11%	0.025%
33	17.851	2541	2544	2545	rBV3	5592	5866	0.13%	0.028%
34	21.121	3095	3100	3110	rBV	3446547	4538717	97.58%	21.978%

LSC Area Percent Report

Data Path : Z:\SVOASRV\HPCHEM1\BNA M\DATA\BM112619\
Data File : BM023895.D
Acq On : 26 Nov 2019 16:23
Operator : JU
Sample : K5983-05
Misc :
ALS Vial : 10 Sample Multiplier: 1

Instrument :
BNA_M
ClientSampleId :
SVOC-GPC-BLANK

Integration Parameters: LSCINT.P
Integrator: RTE
Smoothing : OFF Filtering: 5
Sampling : 1 Min Area: 0.1 % of largest Peak
Start Thrs: 0.2 Max Peaks: 100
Stop Thrs : 0 Peak Location: TOP

If leading or trailing edge < 100 prefer < Baseline drop else tangent >
Peak separation: 5

Method : Z:\SVOASRV\HPCHEM1\BNA_M\METHODS\SOM-EPA-BM111119MA.M
Title : SVOA CALIBRATION

35	23.268	3459	3465	3474	rBV	2617693	4651247	100.00%	22.523%
----	--------	------	------	------	-----	---------	---------	---------	---------

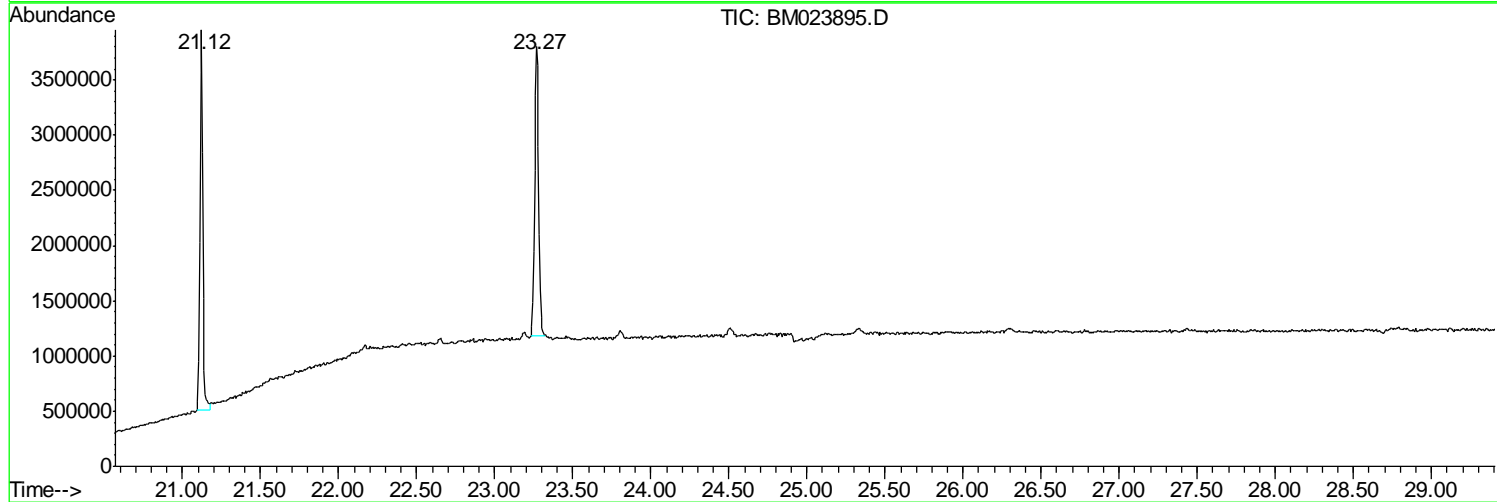
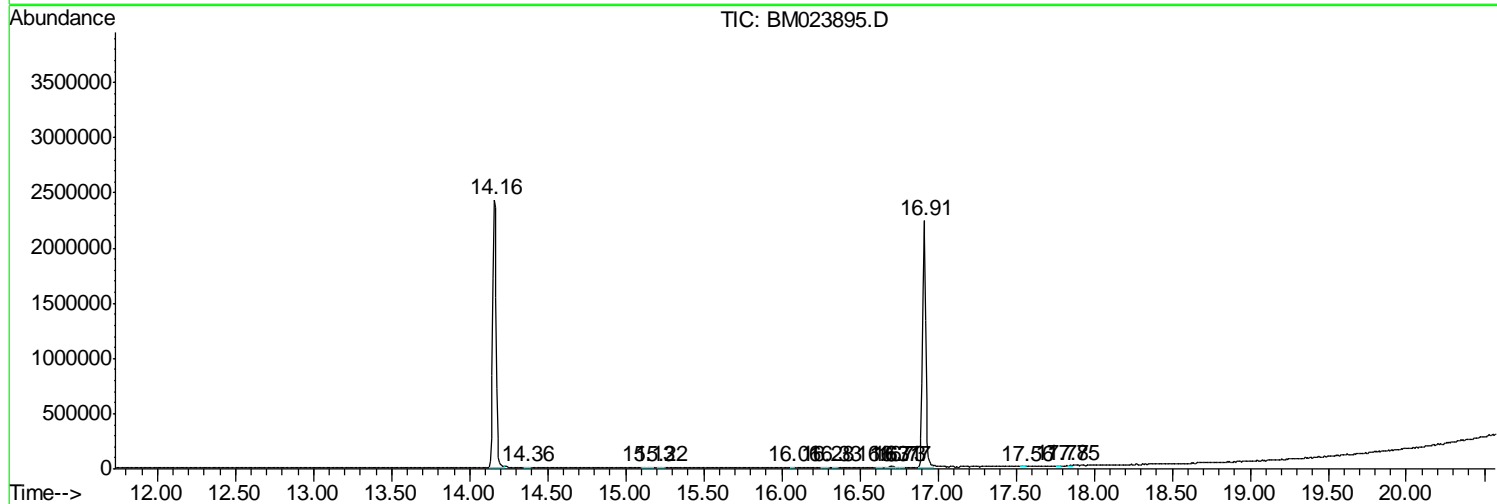
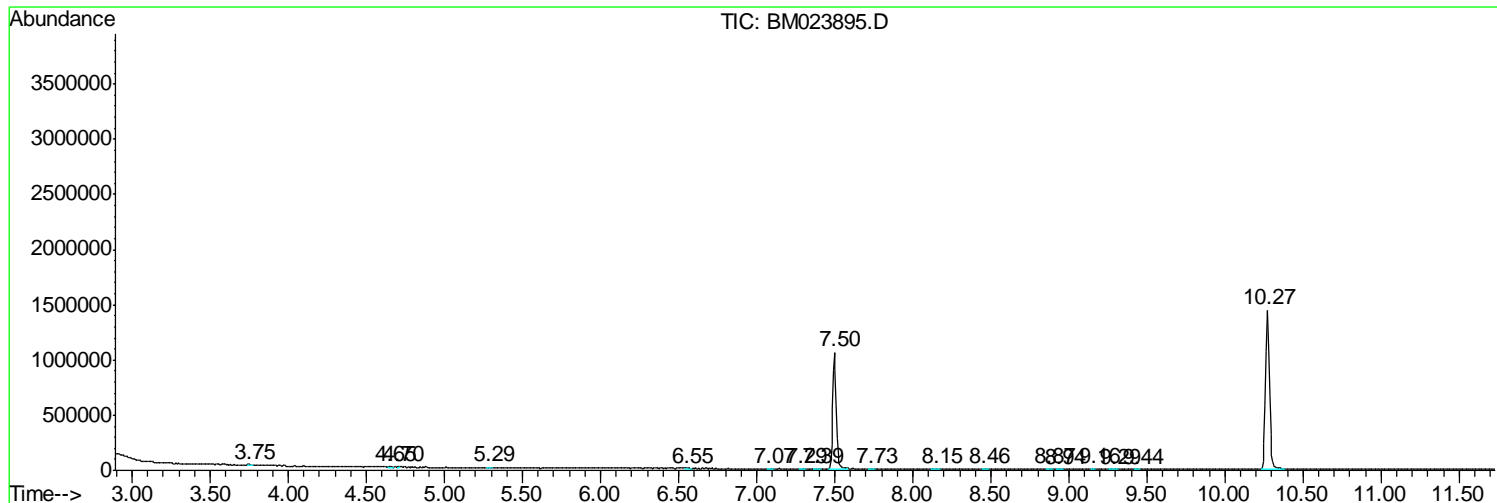
Sum of corrected areas: 20651149

Data Path : Z:\SVOASRV\HPCHEM1\BNA M\DATA\BM112619\
 Data File : BM023895.D
 Acq On : 26 Nov 2019 16:23
 Operator : JU
 Sample : K5983-05
 Misc :
 ALS Vial : 10 Sample Multiplier: 1

Instrument :
 BNA_M
ClientSampleId :
 SVOC-GPC-BLANK

Quant Method : Z:\SVOASRV\HPCHEM1\BNA_M\METHODS\SOM-EPA-BM111119MA.M
 Quant Title : SVOA CALIBRATION

TIC Library : C:\DATABASE\NIST11.L
 TIC Integration Parameters: LSCINT.P



Data Path : Z:\SVOASRV\HPCHEM1\BNA_M\DATA\BM112619\
Data File : BM023895.D
Acq On : 26 Nov 2019 16:23
Operator : JU
Sample : K5983-05
Misc :
ALS Vial : 10 Sample Multiplier: 1

Instrument :
BNA_M
ClientSampleId :
SVOC-GPC-BLANK

Quant Method : Z:\SVOASRV\HPCHEM1\BNA_M\METHODS\SOM-EPA-BM111119MA.M
Quant Title : SVOA CALIBRATION

TIC Library : C:\DATABASE\NIST11.L
TIC Integration Parameters: LSCINT.P

No Library Search Compounds Detected

Data Path : Z:\SVOASRV\HPCHEM1\BNA_M\DATA\BM112619\
Data File : BM023895.D
Acq On : 26 Nov 2019 16:23
Operator : JU
Sample : K5983-05
Misc :
ALS Vial : 10 Sample Multiplier: 1

Instrument :
BNA_M
ClientSampleId :
SVOC-GPC-BLANK

Quant Method : Z:\SVOASRV\HPCHEM1\BNA_M\METHODS\SOM-EPA-BM111119MA.M
Quant Title : SVOA CALIBRATION

TIC Library : C:\DATABASE\NIST11.L
TIC Integration Parameters: LSCINT.P

TIC Top Hit name	RT	EstConc	Units	Response	--Internal Standard--			
					#	RT	Resp	Conc
