

Data Path : Z:\SVOASRV\HPCHEM1\BNA M\DATA\BM112619\
 Data File : BM023906.D
 Acq On : 27 Nov 2019 00:50
 Operator : JU
 Sample : K5985-09
 Misc :
 ALS Vial : 20 Sample Multiplier: 1

Instrument :
 BNA_M
 ClientSampleId :
 C0B13

Integration Parameters: LSCINT.P

Integrator: RTE
 Smoothing : OFF
 Sampling : 1
 Start Thrs: 0.2
 Stop Thrs : 0

Filtering: 5
 Min Area: 0.1 % of largest Peak
 Max Peaks: 100
 Peak Location: TOP

If leading or trailing edge < 100 prefer < Baseline drop else tangent >
 Peak separation: 5

Method : Z:\SVOASRV\HPCHEM1\BNA_M\METHODS\SOM-EPA-BM111119MA.M
 Title : SVOA CALIBRATION

Signal : TIC

peak #	R.T. min	first scan	max scan	last scan	PK TY	peak height	corr. area	corr. % max.	% of total
1	2.928	4	7	9	rVB	59372	57898	1.05%	0.098%
2	2.963	9	13	18	rVB	1378466	1313238	23.74%	2.230%
3	3.263	61	64	65	rBV2	19548	19136	0.35%	0.032%
4	3.287	65	68	73	rVB	96537	110135	1.99%	0.187%
5	3.657	128	131	138	rVB3	19936	28560	0.52%	0.048%
6	3.752	142	147	154	rVV2	36599	56120	1.01%	0.095%
7	3.852	162	164	169	rVB5	8157	10130	0.18%	0.017%
8	3.916	173	175	180	rVB6	6792	8618	0.16%	0.015%
9	4.275	234	236	240	rBV6	7631	12093	0.22%	0.021%
10	4.487	268	272	274	rBV5	6998	6995	0.13%	0.012%
11	4.575	282	287	292	rVB3	11221	17522	0.32%	0.030%
12	4.675	302	304	308	rVB5	5186	6004	0.11%	0.010%
13	4.981	352	356	359	rBV6	6659	5934	0.11%	0.010%
14	5.528	445	449	455	rVB8	5256	9760	0.18%	0.017%
15	5.998	526	529	533	rBV6	4672	7523	0.14%	0.013%
16	6.887	676	680	683	rVB4	8668	9218	0.17%	0.016%
17	6.922	683	686	691	rVB7	5179	7366	0.13%	0.013%
18	6.975	691	695	696	rBV4	7192	8419	0.15%	0.014%
19	6.993	696	698	703	rVB4	5898	7570	0.14%	0.013%
20	7.051	703	708	713	rBV6	6101	14298	0.26%	0.024%
21	7.493	776	783	797	rBV	1956088	3180918	57.51%	5.401%
22	7.634	803	807	815	rVB2	16940	27181	0.49%	0.046%
23	8.034	872	875	879	rVB3	4728	6608	0.12%	0.011%
24	9.604	1139	1142	1146	rVB6	3950	6593	0.12%	0.011%
25	9.969	1201	1204	1208	rVB4	10089	14844	0.27%	0.025%
26	10.269	1243	1255	1267	rBV	2603055	4354414	78.73%	7.393%
27	10.398	1276	1277	1287	rVB7	9221	16013	0.29%	0.027%
28	10.534	1295	1300	1304	rBV6	9814	14924	0.27%	0.025%
29	10.622	1310	1315	1319	rBV7	5196	6125	0.11%	0.010%
30	10.681	1321	1325	1329	rVV7	4746	8175	0.15%	0.014%
31	10.739	1332	1335	1340	rVB5	11307	18760	0.34%	0.032%
32	10.957	1370	1372	1376	rVB3	7235	8170	0.15%	0.014%
33	11.028	1382	1384	1387	rBV4	6581	8772	0.16%	0.015%
34	13.251	1759	1762	1766	rVB5	6090	7362	0.13%	0.012%

Data Path : Z:\SVOASRV\HPCHEM1\BNA M\DATA\BM112619\
 Data File : BM023906.D
 Acq On : 27 Nov 2019 00:50
 Operator : JU
 Sample : K5985-09
 Misc :
 ALS Vial : 20 Sample Multiplier: 1

Instrument :
 BNA_M
 ClientSampleId :
 C0B13

Integration Parameters: LSCINT.P

Integrator: RTE
 Smoothing : OFF
 Sampling : 1
 Start Thrs: 0.2
 Stop Thrs : 0

Filtering: 5
 Min Area: 0.1 % of largest Peak
 Max Peaks: 100
 Peak Location: TOP

If leading or trailing edge < 100 prefer < Baseline drop else tangent >
 Peak separation: 5

Method : Z:\SVOASRV\HPCHEM1\BNA_M\METHODS\SOM-EPA-BM111119MA.M
 Title : SVOA CALIBRATION

35	14.157	1909	1916	1932	rVV	3764411	5525877	99.91%	9.382%
36	14.492	1968	1973	1976	rBV4	4967	5871	0.11%	0.010%
37	15.904	2207	2213	2218	rBV9	8732	16200	0.29%	0.028%
38	16.104	2244	2247	2251	rVB5	3975	6016	0.11%	0.010%
39	16.451	2302	2306	2308	rBV4	8149	9540	0.17%	0.016%
40	16.704	2344	2349	2353	rBV2	10213	16195	0.29%	0.027%
41	16.798	2362	2365	2368	rVV2	10299	10983	0.20%	0.019%
42	16.910	2378	2384	2398	rBV	3777170	5530746	100.00%	9.390%
43	17.010	2398	2401	2408	rVB5	15741	32552	0.59%	0.055%
44	17.098	2411	2416	2420	rBV2	56482	77060	1.39%	0.131%
45	17.368	2460	2462	2467	rBV6	12771	20104	0.36%	0.034%
46	17.404	2467	2468	2471	rVB2	10081	7487	0.14%	0.013%
47	17.521	2481	2488	2496	rBV	198168	363051	6.56%	0.616%
48	17.627	2503	2506	2515	rVB5	48908	75765	1.37%	0.129%
49	17.709	2517	2520	2523	rVB5	9576	12153	0.22%	0.021%
50	17.768	2525	2530	2535	rBV	71361	94615	1.71%	0.161%
51	17.815	2535	2538	2543	rVV5	34565	51447	0.93%	0.087%
52	17.927	2554	2557	2561	rBV5	12257	15603	0.28%	0.026%
53	17.986	2562	2567	2573	rVV	1283671	1668977	30.18%	2.834%
54	18.045	2573	2577	2582	rVV	341574	485636	8.78%	0.825%
55	18.092	2582	2585	2589	rVB	110552	142112	2.57%	0.241%
56	18.274	2611	2616	2621	rBV	593130	772381	13.97%	1.311%
57	18.321	2621	2624	2630	rVB3	76149	100442	1.82%	0.171%
58	18.386	2631	2635	2636	rBV4	22653	24262	0.44%	0.041%
59	18.415	2636	2640	2643	rVV	85241	113632	2.05%	0.193%
60	18.451	2643	2646	2652	rVB	239061	311364	5.63%	0.529%
61	18.515	2654	2657	2660	rBV4	14765	22231	0.40%	0.038%
62	18.551	2660	2663	2668	rVB4	45034	55463	1.00%	0.094%
63	18.768	2695	2700	2703	rBV	241742	313200	5.66%	0.532%
64	18.821	2703	2709	2710	rVV	530374	727150	13.15%	1.235%
65	18.845	2710	2713	2723	rVB2	1554119	2199233	39.76%	3.734%
66	18.927	2723	2727	2732	rBV	241443	316051	5.71%	0.537%
67	18.980	2732	2736	2740	rBV2	31817	49029	0.89%	0.083%
68	19.056	2744	2749	2756	rBV2	359578	654513	11.83%	1.111%
69	19.133	2756	2762	2768	rVB	2275037	3107781	56.19%	5.276%
70	19.198	2768	2773	2779	rVB	836366	1060509	19.17%	1.801%
71	19.268	2782	2785	2790	rVB6	30599	38334	0.69%	0.065%

Data Path : Z:\SVOASRV\HPCHEM1\BNA M\DATA\BM112619\
 Data File : BM023906.D
 Acq On : 27 Nov 2019 00:50
 Operator : JU
 Sample : K5985-09
 Misc :
 ALS Vial : 20 Sample Multiplier: 1

Instrument :
 BNA_M
 ClientSampleId :
 C0B13

Integration Parameters: LSCINT.P

Integrator: RTE
 Smoothing : OFF
 Sampling : 1
 Start Thrs: 0.2
 Stop Thrs : 0

Filtering: 5
 Min Area: 0.1 % of largest Peak
 Max Peaks: 100
 Peak Location: TOP

If leading or trailing edge < 100 prefer < Baseline drop else tangent >
 Peak separation: 5

Method : Z:\SVOASRV\HPCHEM1\BNA_M\METHODS\SOM-EPA-BM111119MA.M
 Title : SVOA CALIBRATION

72	19.321	2790	2794	2798	rBV3	106691	148694	2.69%	0.252%
73	19.392	2802	2806	2811	rVB	598573	762927	13.79%	1.295%
74	19.474	2812	2820	2824	rBV	1042307	1350278	24.41%	2.293%
75	19.521	2824	2828	2832	rBV	365187	445474	8.05%	0.756%
76	19.580	2832	2838	2843	rVB	2264253	2856021	51.64%	4.849%
77	19.721	2855	2862	2865	rBV4	248167	530972	9.60%	0.902%
78	19.798	2872	2875	2878	rVB2	91963	96874	1.75%	0.164%
79	19.845	2878	2883	2887	rBV2	885831	1162714	21.02%	1.974%
80	19.898	2887	2892	2898	rVB	1969993	2292572	41.45%	3.892%
81	19.974	2902	2905	2908	rVB3	87117	101724	1.84%	0.173%
82	20.045	2911	2917	2921	rBV3	179916	329618	5.96%	0.560%
83	20.127	2926	2931	2935	rBV	995565	1199668	21.69%	2.037%
84	20.174	2935	2939	2941	rBV	490423	580727	10.50%	0.986%
85	20.203	2941	2944	2950	rVB	832771	979573	17.71%	1.663%
86	20.280	2953	2957	2961	rVB3	218360	281142	5.08%	0.477%
87	20.345	2965	2968	2971	rBV4	106069	148141	2.68%	0.252%
88	20.374	2971	2973	2976	rVV3	97547	93296	1.69%	0.158%
89	20.445	2977	2985	2992	rVV	1201374	2083592	37.67%	3.538%
90	20.527	2996	2999	3004	rVV5	95348	115467	2.09%	0.196%
91	20.750	3033	3037	3041	rBV	405328	491528	8.89%	0.835%
92	20.856	3053	3055	3059	rVB5	94558	97958	1.77%	0.166%
93	20.998	3076	3079	3083	rBV2	176201	199116	3.60%	0.338%
94	21.115	3094	3099	3103	rBV	3584290	4607121	83.30%	7.822%
95	23.262	3458	3464	3477	rVB	2466430	4514523	81.63%	7.665%

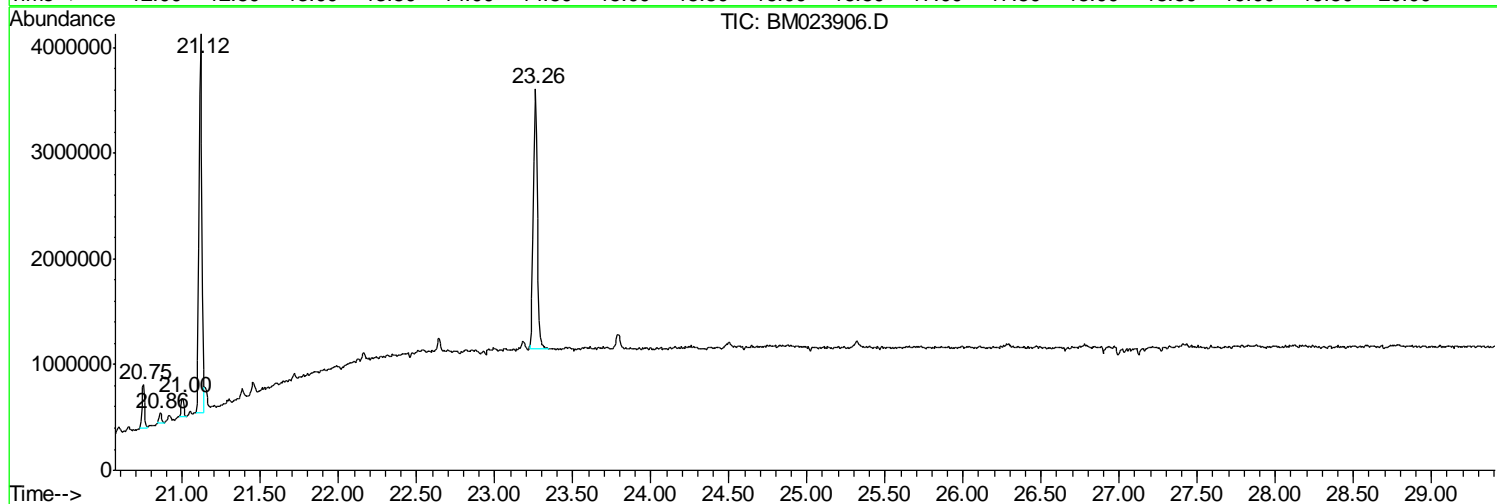
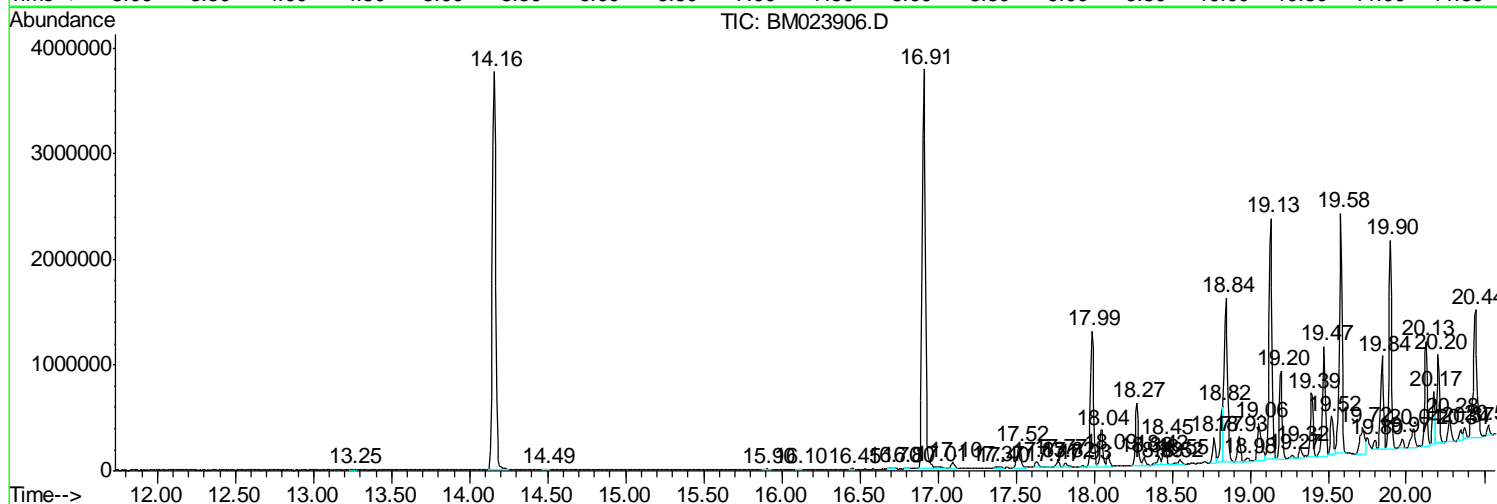
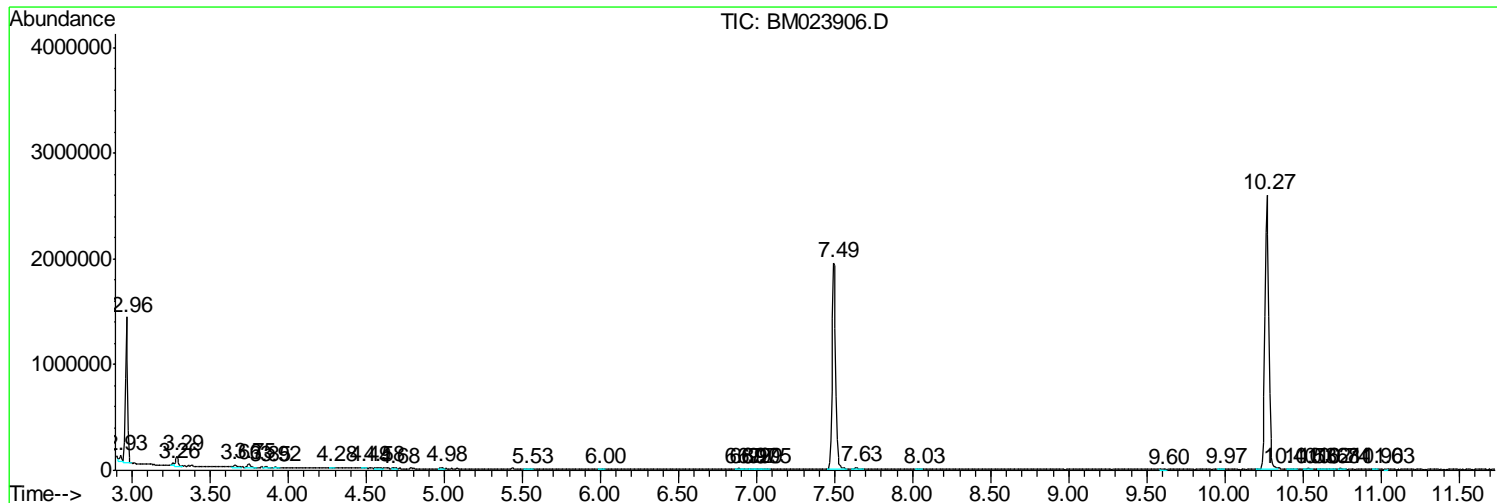
Sum of corrected areas: 58898681

Data Path : Z:\SVOASRV\HPCHEM1\BNA M\DATA\BM112619\
 Data File : BM023906.D
 Acq On : 27 Nov 2019 00:50
 Operator : JU
 Sample : K5985-09
 Misc :
 ALS Vial : 20 Sample Multiplier: 1

Instrument :
 BNA_M
 ClientSampled :
 C0B13

Quant Method : Z:\SVOASRV\HPCHEM1\BNA_M\METHODS\SOM-EPA-BM11119MA.M
 Quant Title : SVOA CALIBRATION

TIC Library : C:\DATABASE\NIST11.L
 TIC Integration Parameters: LSCINT.P



Data Path : Z:\SVOASRV\HPCHEM1\BNA M\DATA\BM112619\
 Data File : BM023906.D
 Acq On : 27 Nov 2019 00:50
 Operator : JU
 Sample : K5985-09
 Misc :
 ALS Vial : 20 Sample Multiplier: 1

Instrument :
 BNA_M
 ClientSampled :
 C0B13

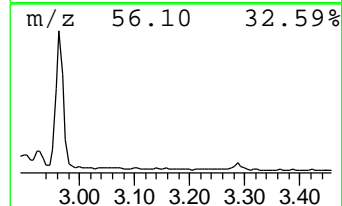
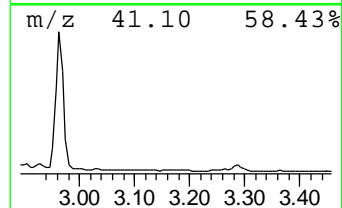
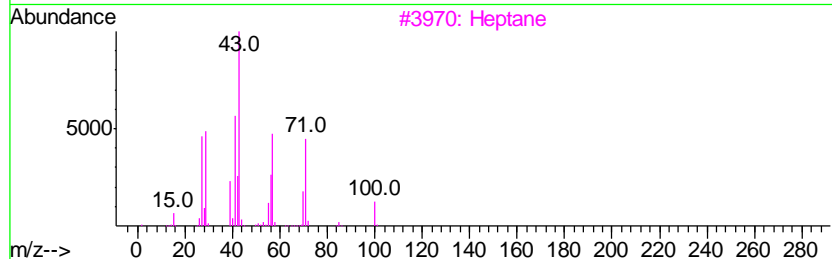
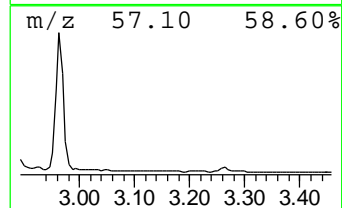
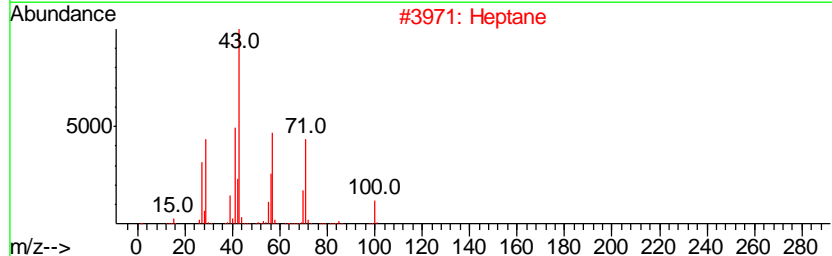
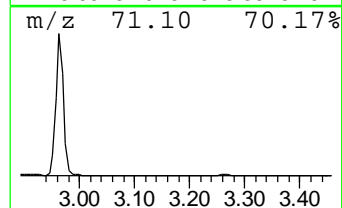
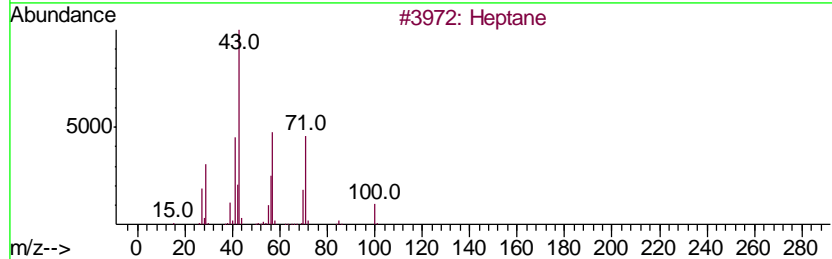
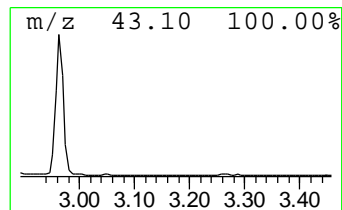
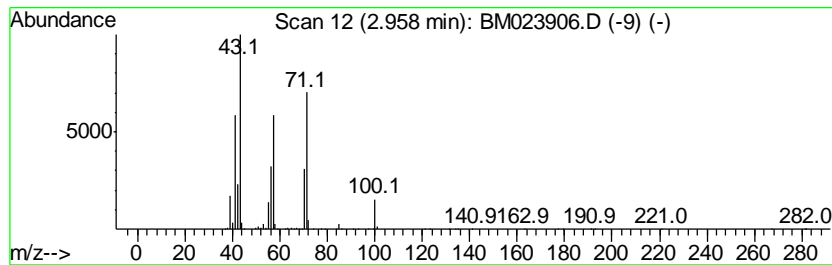
Quant Method : Z:\SVOASRV\HPCHEM1\BNA_M\METHODS\SOM-EPA-BM111119MA.M
 Quant Title : SVOA CALIBRATION

TIC Library : C:\DATABASE\NIST11.L
 TIC Integration Parameters: LSCINT.P

 Peak Number 1 (DEL) Alkane: Straight-Chai... Concentration Rank 5

R.T.	EstConc	Area	Relative to ISTD	R.T.
2.96	8.26 ng/ul	1313240	1,4-Dichlorobenzene-d4	7.50

Hit#	of	Tentative ID	MW	MolForm	CAS#	Qual
1	5	Heptane	100	C7H16	000142-82-5	91
2		Heptane	100	C7H16	000142-82-5	91
3		Heptane	100	C7H16	000142-82-5	91
4		Heptane	100	C7H16	000142-82-5	68
5		Hexane, 3-methyl-	100	C7H16	000589-34-4	50



Data Path : Z:\SVOASRV\HPCHEM1\BNA M\DATA\BM112619\
 Data File : BM023906.D
 Acq On : 27 Nov 2019 00:50
 Operator : JU
 Sample : K5985-09
 Misc :
 ALS Vial : 20 Sample Multiplier: 1

Instrument :
 BNA_M
 ClientSampled :
 C0B13

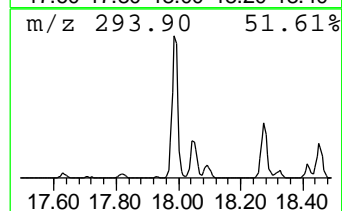
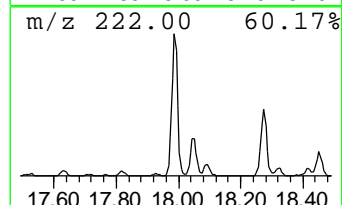
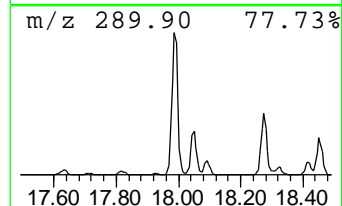
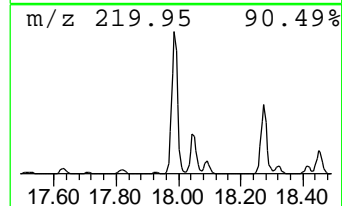
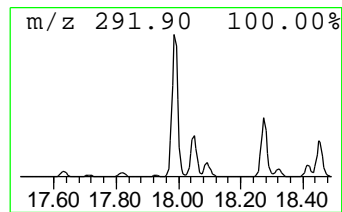
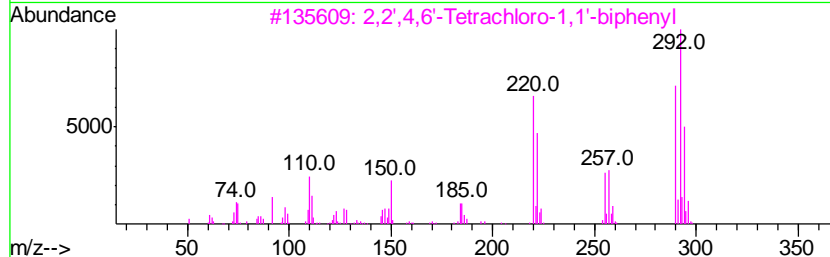
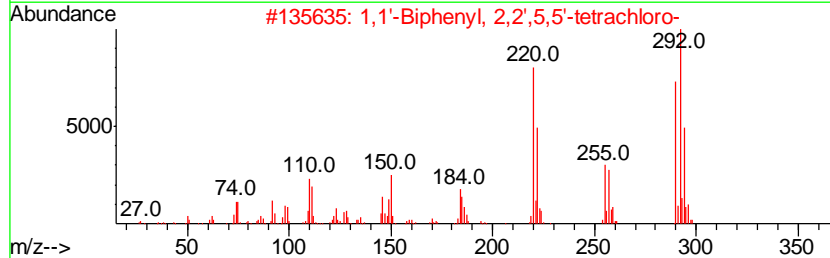
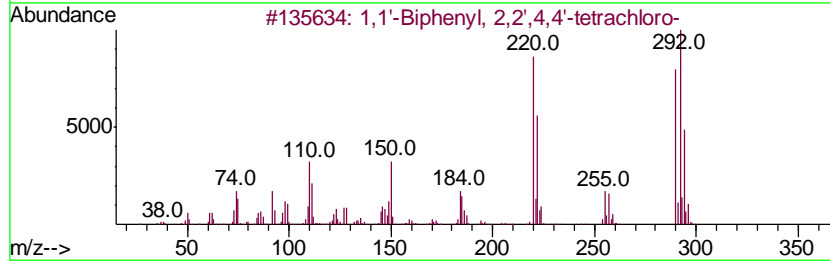
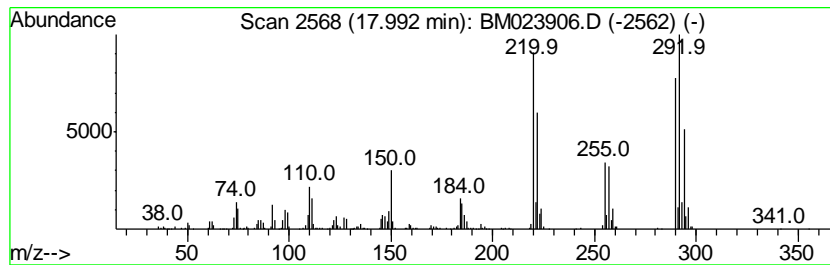
Quant Method : Z:\SVOASRV\HPCHEM1\BNA_M\METHODS\SOM-EPA-BM111119MA.M
 Quant Title : SVOA CALIBRATION

TIC Library : C:\DATABASE\NIST11.L
 TIC Integration Parameters: LSCINT.P

 Peak Number 2 1,1'-Biphenyl, 2,2',4,4'-te... Concentration Rank 7

R.T.	EstConc	Area	Relative to ISTD	R.T.
17.99	6.04 ng/ul	1668980	Phenanthrene-d10	16.91

Hit#	of	Tentative ID	MW	MolForm	CAS#	Qual
1	5	1,1'-Biphenyl, 2,2',4,4'-tetrach...	290	C12H6Cl4	002437-79-8	99
2		1,1'-Biphenyl, 2,2',5,5'-tetrach...	290	C12H6Cl4	035693-99-3	99
3		2,2',4,6'-Tetrachloro-1,1'-biphenyl	290	C12H6Cl4	068194-04-7	99
4		1,1'-Biphenyl, 2,2',5,5'-tetrach...	290	C12H6Cl4	035693-99-3	99
5		1,1'-Biphenyl, 2,2',4,6-Tetrachl...	290	C12H6Cl4	062796-65-0	99



Data Path : Z:\SVOASRV\HPCHEM1\BNA M\DATA\BM112619\
 Data File : BM023906.D
 Acq On : 27 Nov 2019 00:50
 Operator : JU
 Sample : K5985-09
 Misc :
 ALS Vial : 20 Sample Multiplier: 1

Instrument :
 BNA_M
 ClientSampled :
 C0B13

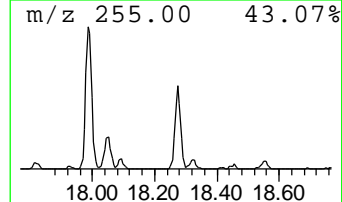
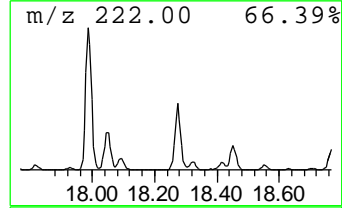
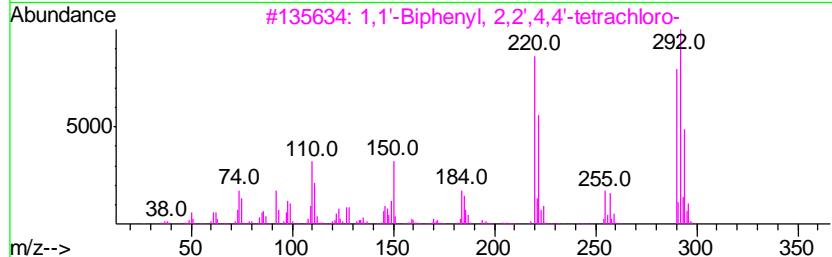
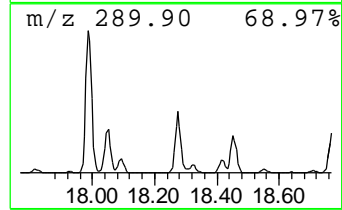
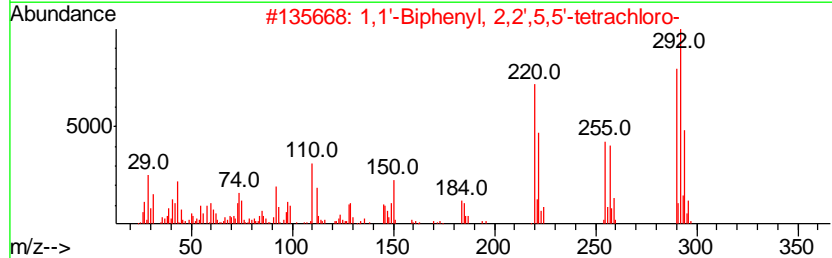
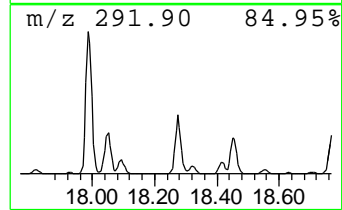
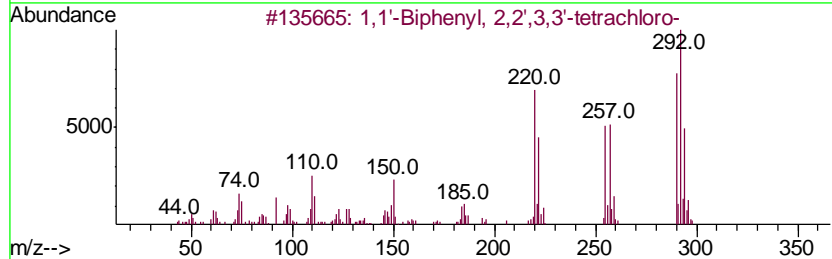
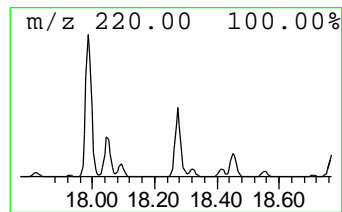
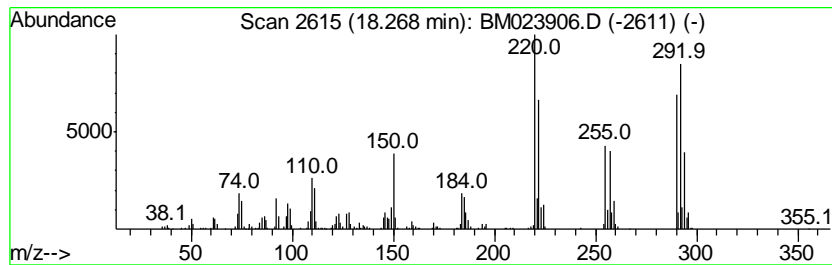
Quant Method : Z:\SVOASRV\HPCHEM1\BNA_M\METHODS\SOM-EPA-BM11119MA.M
 Quant Title : SVOA CALIBRATION

TIC Library : C:\DATABASE\NIST11.L
 TIC Integration Parameters: LSCINT.P

 Peak Number 3 1,1'-Biphenyl, 2,2',3,3'-te... Concentration Rank 15

R.T.	EstConc	Area	Relative to ISTD	R.T.
18.27	2.79 ng/ul	772381	Phenanthrene-d10	16.91

Hit#	of	Tentative ID	MW	MolForm	CAS#	Qual
1	5	1,1'-Biphenyl, 2,2',3,3'-tetrach...	290	C12H6Cl4	038444-93-8	99
2		1,1'-Biphenyl, 2,2',5,5'-tetrach...	290	C12H6Cl4	035693-99-3	99
3		1,1'-Biphenyl, 2,2',4,4'-tetrach...	290	C12H6Cl4	002437-79-8	99
4		2,2',4,5-Tetrachloro-1,1'-biphenyl	290	C12H6Cl4	070362-47-9	99
5		2,3,3',6-Tetrachloro-1,1'-biphenyl	290	C12H6Cl4	074472-33-6	99



Data Path : Z:\SVOASRV\HPCHEM1\BNA M\DATA\BM112619\
 Data File : BM023906.D
 Acq On : 27 Nov 2019 00:50
 Operator : JU
 Sample : K5985-09
 Misc :
 ALS Vial : 20 Sample Multiplier: 1

Instrument :
 BNA_M
 ClientSampleId :
 C0B13

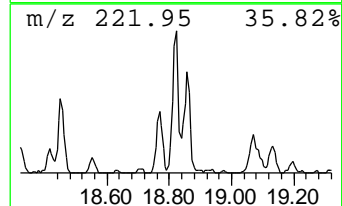
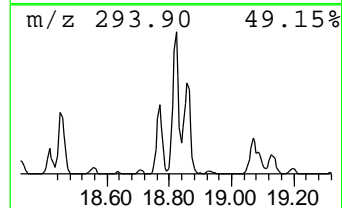
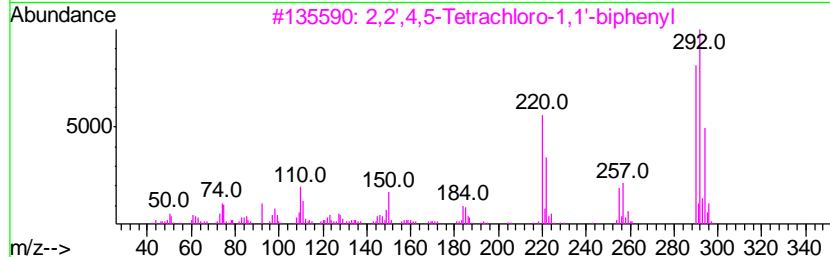
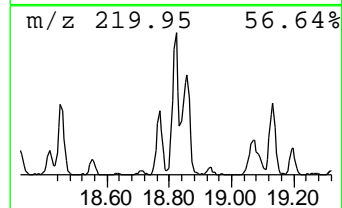
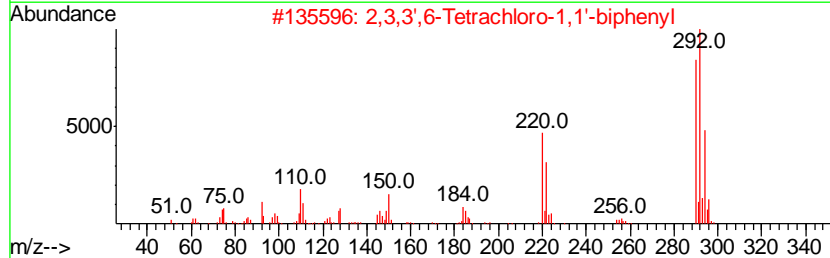
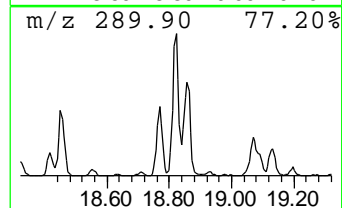
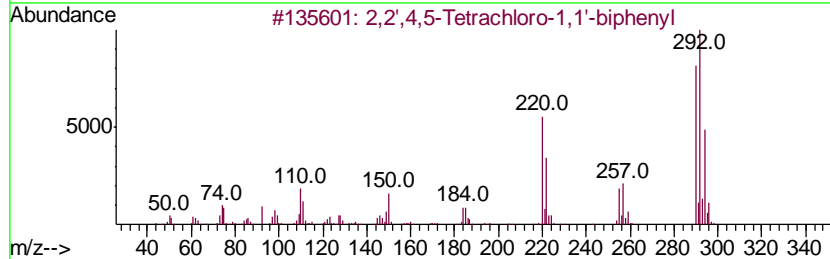
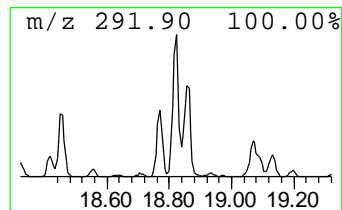
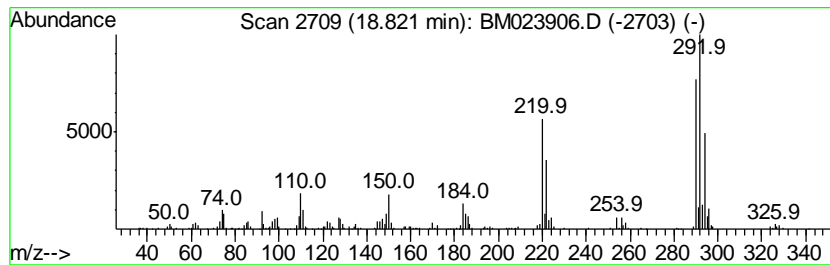
Quant Method : Z:\SVOASRV\HPCHEM1\BNA_M\METHODS\SOM-EPA-BM111119MA.M
 Quant Title : SVOA CALIBRATION

TIC Library : C:\DATABASE\NIST11.L
 TIC Integration Parameters: LSCINT.P

 Peak Number 4 2,2',4,5-Tetrachloro-1,1'-b... Concentration Rank 16

R.T.	EstConc	Area	Relative to ISTD	R.T.
18.82	2.63 ng/ul	727150	Phenanthrene-d10	16.91

Hit#	of	Tentative ID	MW	MolForm	CAS#	Qual
1	5	2,2',4,5-Tetrachloro-1,1'-biphenyl	290	C12H6Cl4	070362-47-9	99
2		2,3,3',6-Tetrachloro-1,1'-biphenyl	290	C12H6Cl4	074472-33-6	99
3		2,2',4,5-Tetrachloro-1,1'-biphenyl	290	C12H6Cl4	070362-47-9	99
4		2,3,3',6-Tetrachloro-1,1'-biphenyl	290	C12H6Cl4	074472-33-6	99
5		1,1'-Biphenyl, 2,2',4,6-Tetrachl...	290	C12H6Cl4	062796-65-0	99



Data Path : Z:\SVOASRV\HPCHEM1\BNA M\DATA\BM112619\
 Data File : BM023906.D
 Acq On : 27 Nov 2019 00:50
 Operator : JU
 Sample : K5985-09
 Misc :
 ALS Vial : 20 Sample Multiplier: 1

Instrument :
 BNA_M
 ClientSampled :
 C0B13

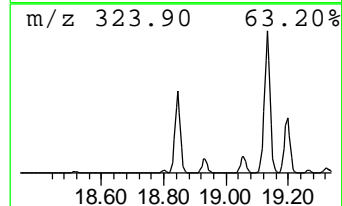
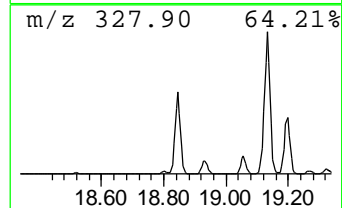
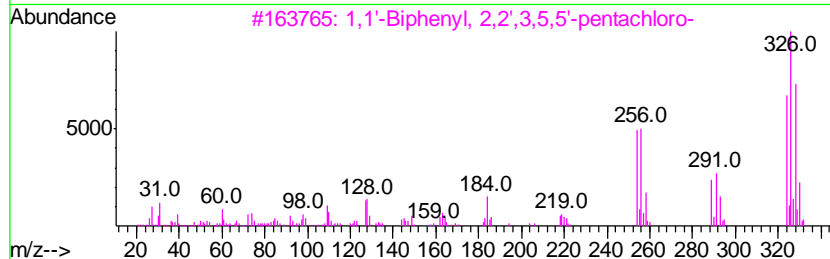
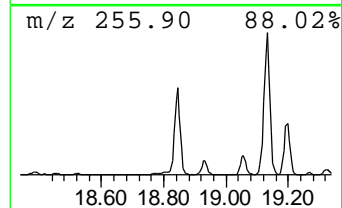
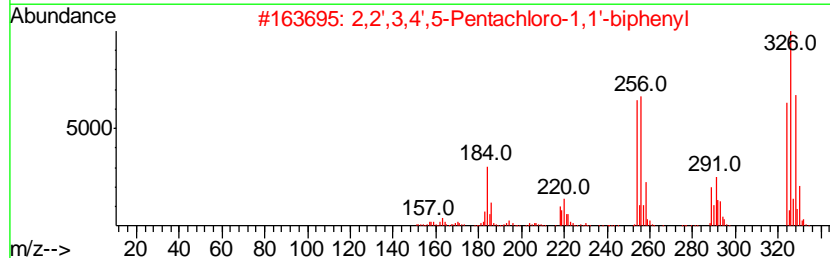
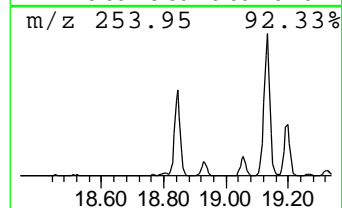
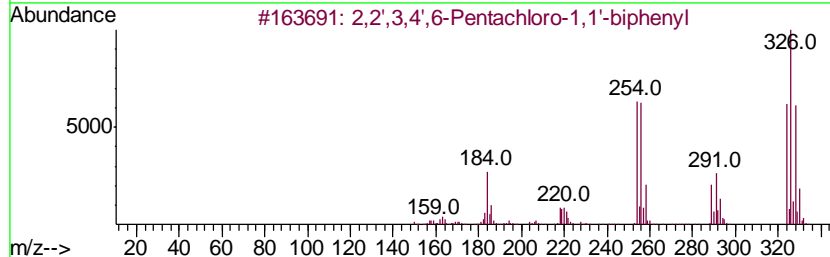
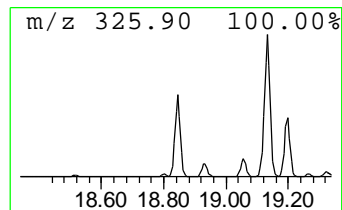
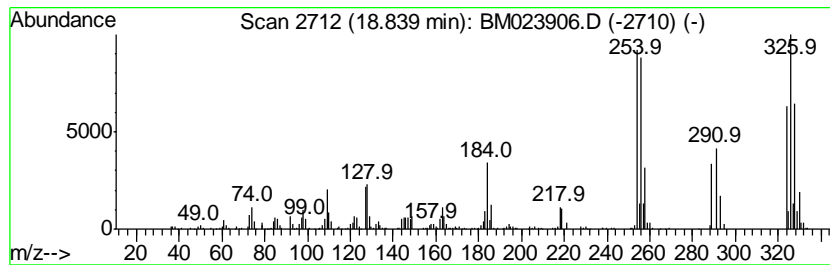
Quant Method : Z:\SVOASRV\HPCHEM1\BNA_M\METHODS\SOM-EPA-BM111119MA.M
 Quant Title : SVOA CALIBRATION

TIC Library : C:\DATABASE\NIST11.L
 TIC Integration Parameters: LSCINT.P

 Peak Number 5 2,2',3,4',6-Pentachloro-1,1... Concentration Rank 6

R.T.	EstConc	Area	Relative to ISTD	R.T.
18.84	7.95 ng/ul	2199230	Phenanthrene-d10	16.91

Hit#	of	Tentative ID	MW	MolForm	CAS#	Qual
1	5	2,2',3,4',6-Pentachloro-1,1'-bip...	324	C12H5Cl5	068194-05-8	99
2		2,2',3,4',5-Pentachloro-1,1'-bip...	324	C12H5Cl5	068194-07-0	99
3		1,1'-Biphenyl, 2,2',3,5,5'-penta...	324	C12H5Cl5	052663-61-3	99
4		2,3,3',4,5'-Pentachloro-1,1'-bip...	324	C12H5Cl5	070362-41-3	99
5		2,3,3',4',5'- Pentachloro-1,1'-b...	324	C12H5Cl5	076842-07-4	99



Data Path : Z:\SVOASRV\HPCHEM1\BNA M\DATA\BM112619\
 Data File : BM023906.D
 Acq On : 27 Nov 2019 00:50
 Operator : JU
 Sample : K5985-09
 Misc :
 ALS Vial : 20 Sample Multiplier: 1

Instrument :
 BNA_M
 ClientSampled :
 C0B13

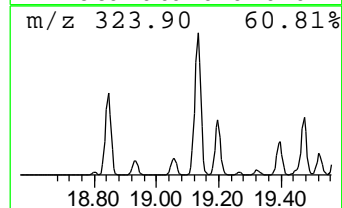
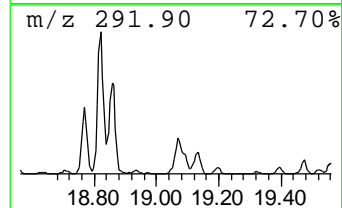
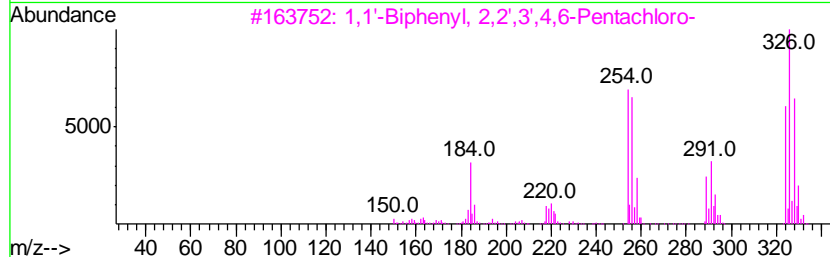
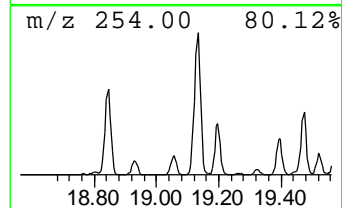
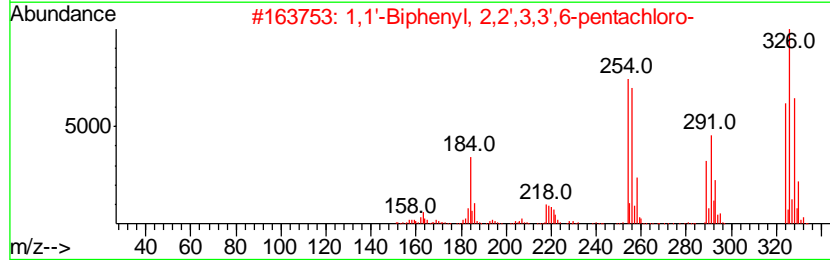
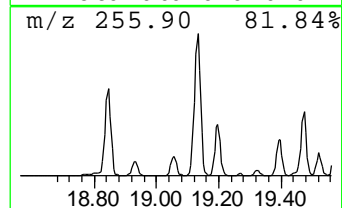
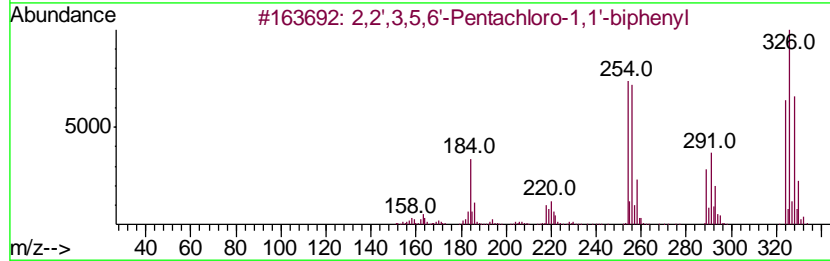
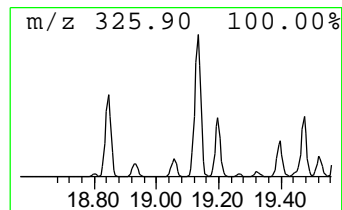
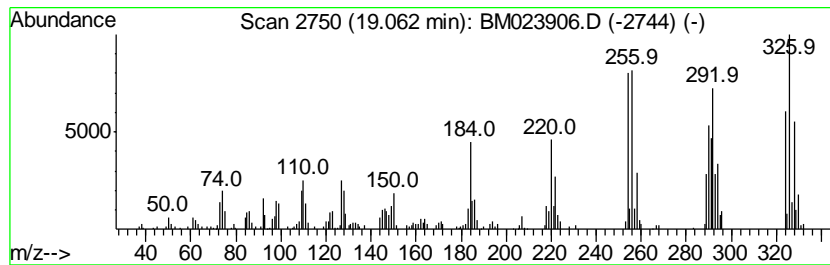
Quant Method : Z:\SVOASRV\HPCHEM1\BNA_M\METHODS\SOM-EPA-BM11119MA.M
 Quant Title : SVOA CALIBRATION

TIC Library : C:\DATABASE\NIST11.L
 TIC Integration Parameters: LSCINT.P

 Peak Number 6 2,2',3,5,6'-Pentachloro-1,1... Concentration Rank 14

R.T.	EstConc	Area	Relative to ISTD	R.T.
19.06	2.84 ng/ul	654513	Chrysene-d12	21.12

Hit#	of	Tentative ID	MW	MolForm	CAS#	Qual
1	5	2,2',3,5,6'-Pentachloro-1,1'-bip...	324	C12H5Cl5	073575-55-0	99
2		1,1'-Biphenyl, 2,2',3,3',6-penta...	324	C12H5Cl5	052663-60-2	99
3		1,1'-Biphenyl, 2,2',3',4,6-Penta...	324	C12H5Cl5	060233-25-2	99
4		2,2',3,4,6'-Pentachloro-1,1'-bip...	324	C12H5Cl5	073575-57-2	99
5		1,1'-Biphenyl, 2,2',3,3',5-penta...	324	C12H5Cl5	060145-20-2	99



Data Path : Z:\SVOASRV\HPCHEM1\BNA M\DATA\BM112619\
 Data File : BM023906.D
 Acq On : 27 Nov 2019 00:50
 Operator : JU
 Sample : K5985-09
 Misc :
 ALS Vial : 20 Sample Multiplier: 1

Instrument :
 BNA_M
 ClientSampled :
 C0B13

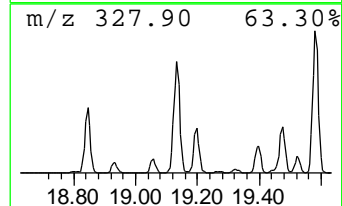
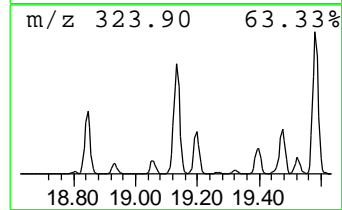
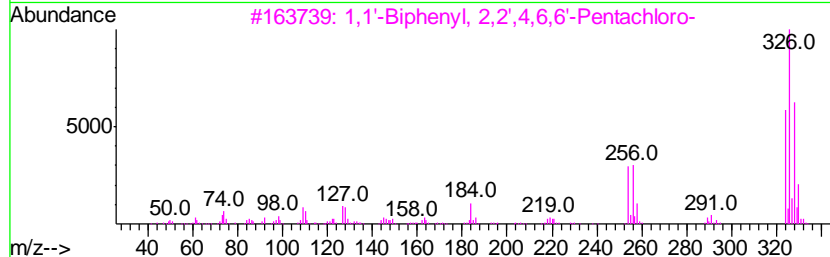
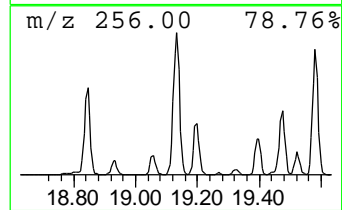
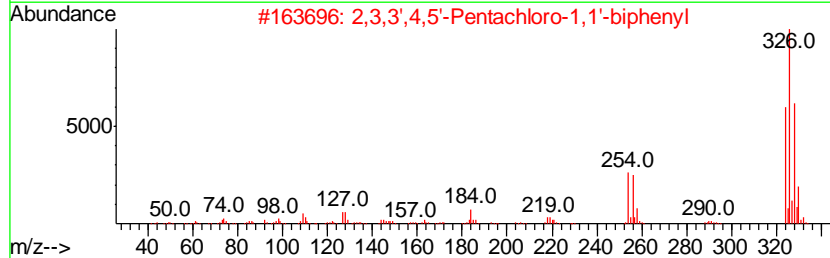
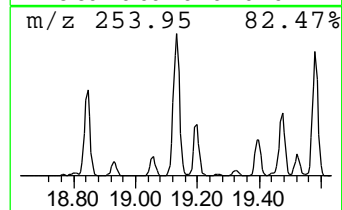
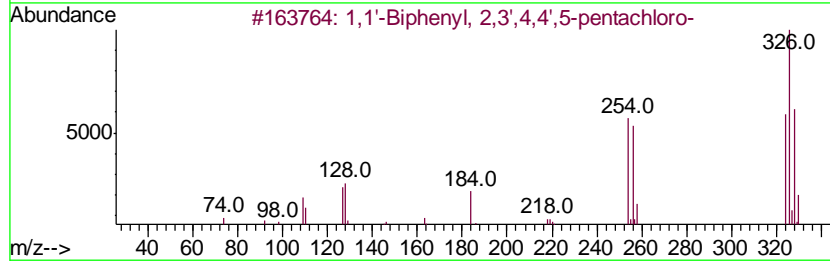
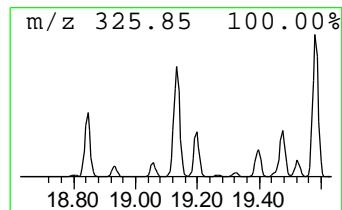
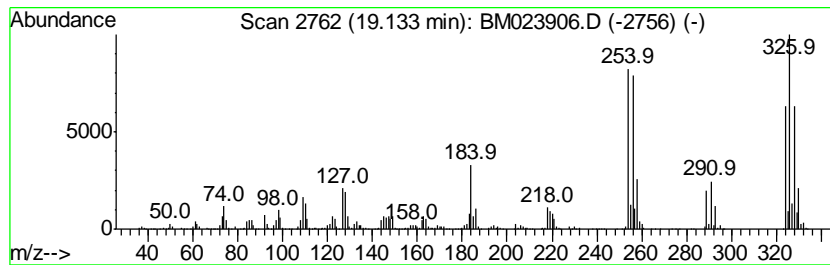
Quant Method : Z:\SVOASRV\HPCHEM1\BNA_M\METHODS\SOM-EPA-BM111119MA.M
 Quant Title : SVOA CALIBRATION

TIC Library : C:\DATABASE\NIST11.L
 TIC Integration Parameters: LSCINT.P

 Peak Number 7 1,1'-Biphenyl, 2,3',4,4',5-... Concentration Rank 1

R.T.	EstConc	Area	Relative to ISTD	R.T.
19.13	13.49 ng/ul	3107780	Chrysene-d12	21.12

Hit#	of	Tentative ID	MW	MolForm	CAS#	Qual
1	5	1,1'-Biphenyl, 2,3',4,4',5-penta...	324	C12H5Cl5	031508-00-6	99
2		2,3,3',4,5'-Pentachloro-1,1'-bip...	324	C12H5Cl5	070362-41-3	99
3		1,1'-Biphenyl, 2,2',4,6,6'-Penta...	324	C12H5Cl5	056558-16-8	99
4		1,1'-Biphenyl, 2,3,3',4',6-penta...	324	C12H5Cl5	038380-03-9	99
5		1,1'-Biphenyl, 2,3,3',4,4'-penta...	324	C12H5Cl5	032598-14-4	99



Data Path : Z:\SVOASRV\HPCHEM1\BNA M\DATA\BM112619\
 Data File : BM023906.D
 Acq On : 27 Nov 2019 00:50
 Operator : JU
 Sample : K5985-09
 Misc :
 ALS Vial : 20 Sample Multiplier: 1

Instrument :
 BNA_M
 ClientSampled :
 C0B13

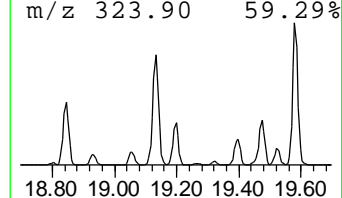
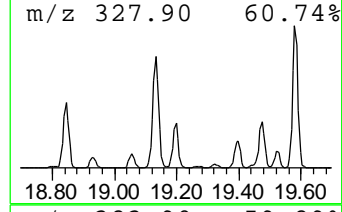
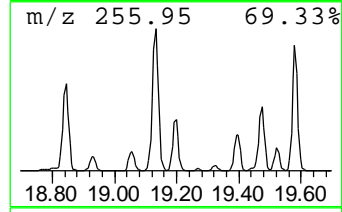
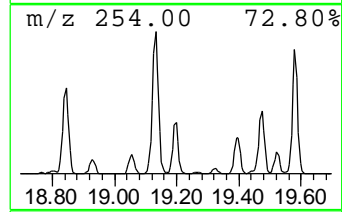
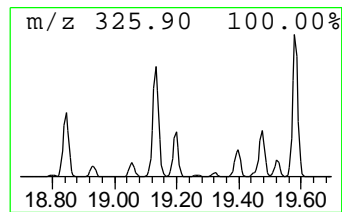
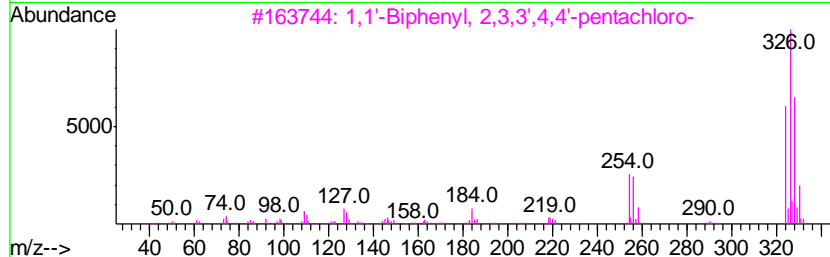
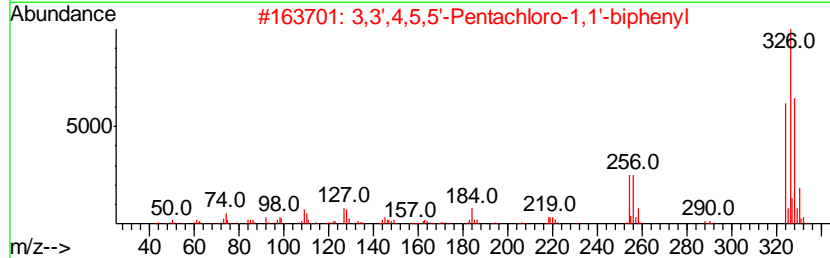
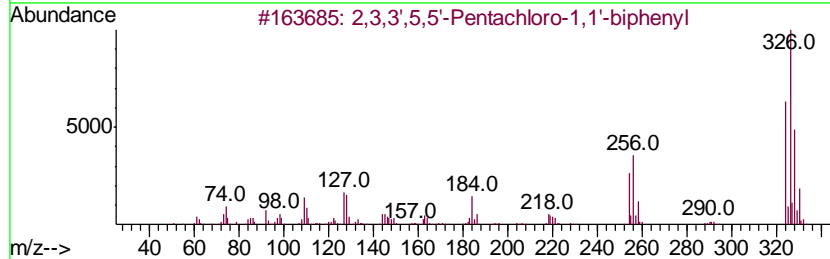
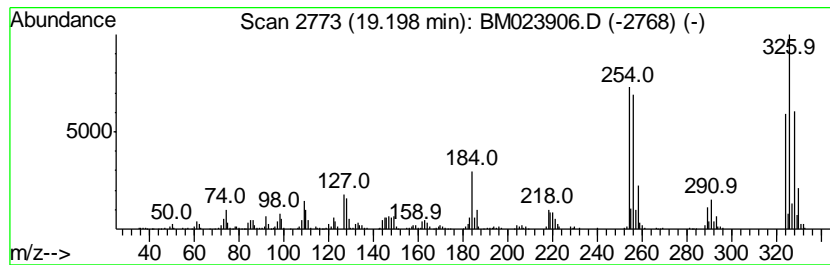
Quant Method : Z:\SVOASRV\HPCHEM1\BNA_M\METHODS\SOM-EPA-BM111119MA.M
 Quant Title : SVOA CALIBRATION

TIC Library : C:\DATABASE\NIST11.L
 TIC Integration Parameters: LSCINT.P

 Peak Number 8 2,3,3',5,5'-Pentachloro-1,1... Concentration Rank 11

R.T.	EstConc	Area	Relative to ISTD	R.T.
19.20	4.60 ng/ul	1060510	Chrysene-d12	21.12

Hit#	of	Tentative ID	MW	MolForm	CAS#	Qual
1	5	2,3,3',5,5'-Pentachloro-1,1'-bip...	324	C12H5Cl5	039635-32-0	99
2		3,3',4,5,5'-Pentachloro-1,1'-bip...	324	C12H5Cl5	039635-33-1	99
3		1,1'-Biphenyl, 2,3,3',4,4'-penta...	324	C12H5Cl5	032598-14-4	99
4		2,3',4',5',6'-Pentachloro-1,1'-bi...	324	C12H5Cl5	074472-39-2	99
5		2,3,3',4',5'- Pentachloro-1,1'-b...	324	C12H5Cl5	076842-07-4	99



Data Path : Z:\SVOASRV\HPCHEM1\BNA M\DATA\BM112619\
 Data File : BM023906.D
 Acq On : 27 Nov 2019 00:50
 Operator : JU
 Sample : K5985-09
 Misc :
 ALS Vial : 20 Sample Multiplier: 1

Instrument :
 BNA_M
 ClientSampled :
 C0B13

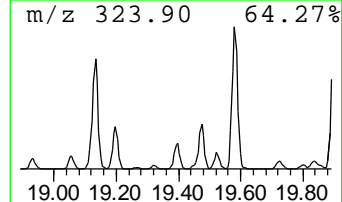
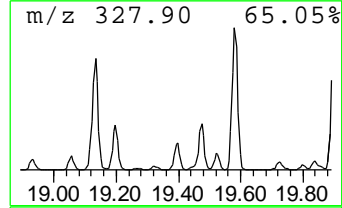
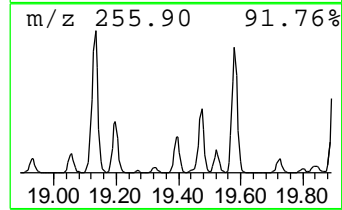
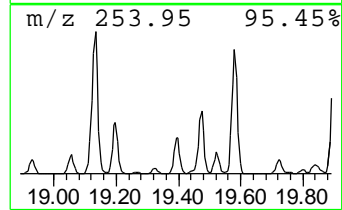
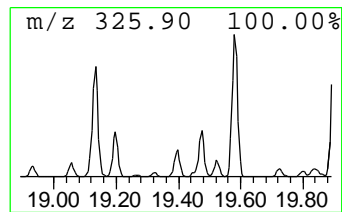
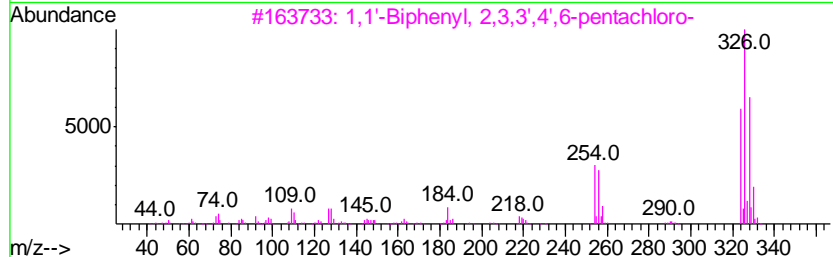
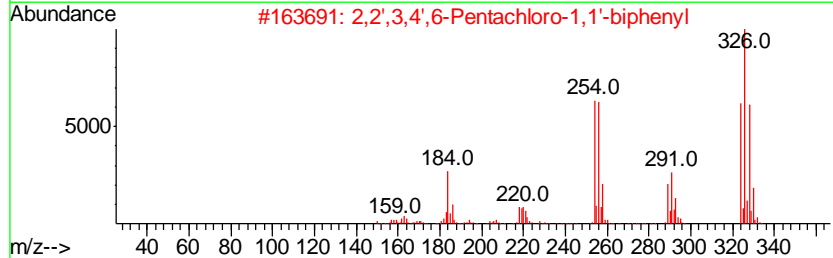
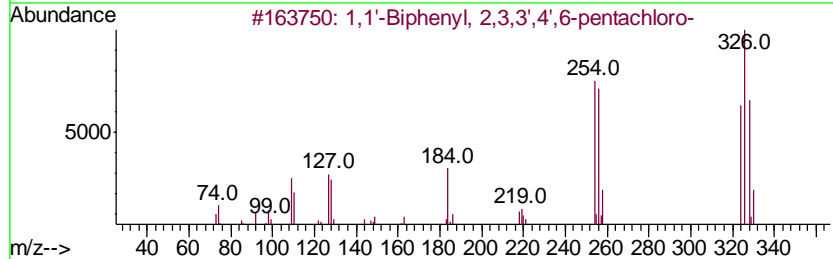
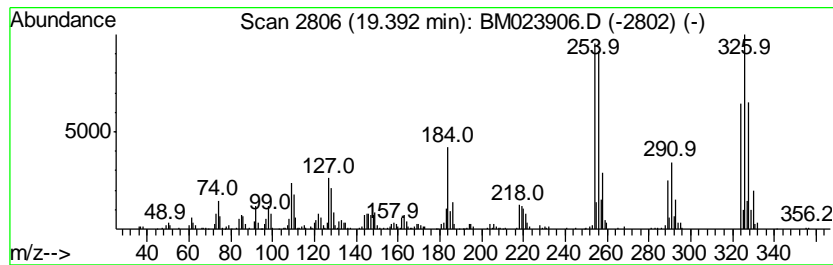
Quant Method : Z:\SVOASRV\HPCHEM1\BNA_M\METHODS\SOM-EPA-BM11119MA.M
 Quant Title : SVOA CALIBRATION

TIC Library : C:\DATABASE\NIST11.L
 TIC Integration Parameters: LSCINT.P

 Peak Number 9 1,1'-Biphenyl, 2,3,3',4',6-... Concentration Rank 13

R.T.	EstConc	Area	Relative to ISTD	R.T.
19.39	3.31 ng/ul	762927	Chrysene-d12	21.12

Hit#	of	Tentative ID	MW	MolForm	CAS#	Qual
1	5	1,1'-Biphenyl, 2,3,3',4',6-penta...	324	C12H5Cl5	038380-03-9	99
2		2,2',3,4',6-Pentachloro-1,1'-bip...	324	C12H5Cl5	068194-05-8	99
3		1,1'-Biphenyl, 2,3,3',4',6-penta...	324	C12H5Cl5	038380-03-9	99
4		1,1'-Biphenyl, 2,2',3',4',5-Penta...	324	C12H5Cl5	041464-51-1	99
5		3,3',4,4',5-Pentachloro-1,1'-bi...	324	C12H5Cl5	057465-28-8	99



Data Path : Z:\SVOASRV\HPCHEM1\BNA M\DATA\BM112619\
 Data File : BM023906.D
 Acq On : 27 Nov 2019 00:50
 Operator : JU
 Sample : K5985-09
 Misc :
 ALS Vial : 20 Sample Multiplier: 1

Instrument :
 BNA_M
 ClientSampled :
 C0B13

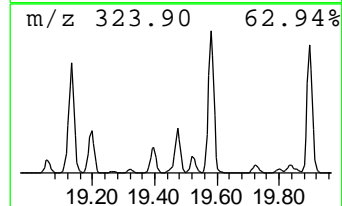
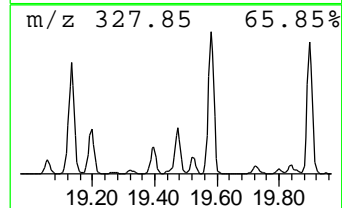
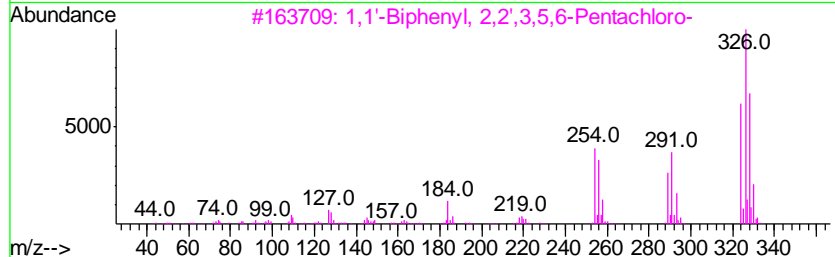
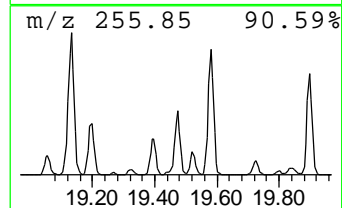
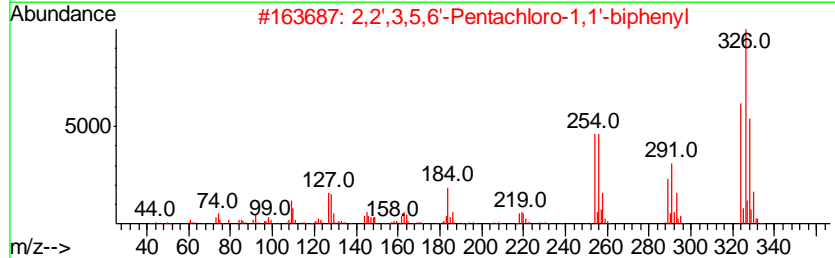
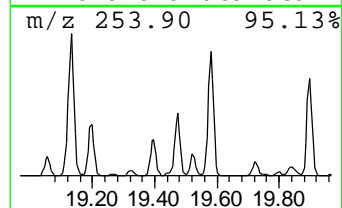
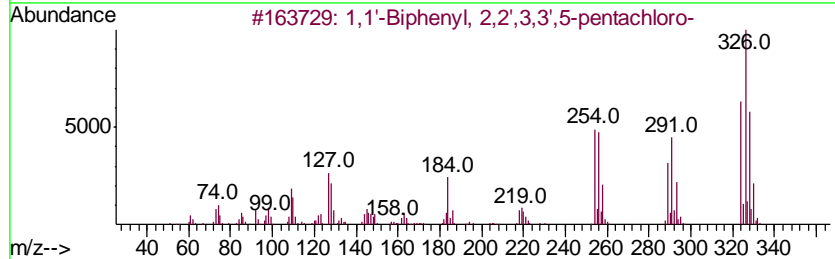
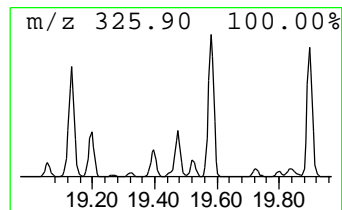
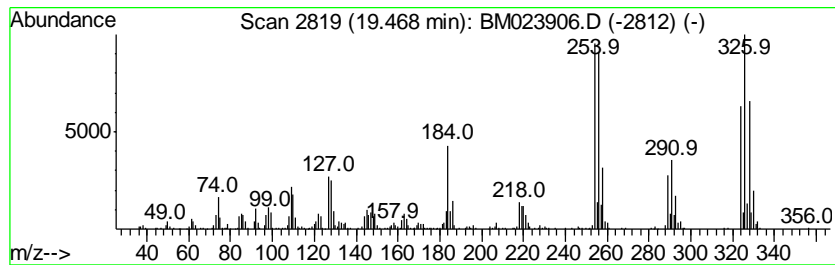
Quant Method : Z:\SVOASRV\HPCHEM1\BNA_M\METHODS\SOM-EPA-BM111119MA.M
 Quant Title : SVOA CALIBRATION

TIC Library : C:\DATABASE\NIST11.L
 TIC Integration Parameters: LSCINT.P

 Peak Number 10 1,1'-Biphenyl, 2,2',3,3',5-... Concentration Rank 8

R.T.	EstConc	Area	Relative to ISTD	R.T.
19.47	5.86 ng/ul	1350280	Chrysene-d12	21.12

Hit#	of	Tentative ID	MW	MolForm	CAS#	Qual
1	5	1,1'-Biphenyl, 2,2',3,3',5-penta...	324	C12H5Cl5	060145-20-2	99
2		2,2',3,5,6'-Pentachloro-1,1'-bip...	324	C12H5Cl5	073575-55-0	99
3		1,1'-Biphenyl, 2,2',3,5,6-Pentac...	324	C12H5Cl5	073575-56-1	99
4		1,1'-Biphenyl, 2,2',3',4,5-Penta...	324	C12H5Cl5	041464-51-1	99
5		1,1'-Biphenyl, 2,2',4,5,5'-penta...	324	C12H5Cl5	037680-73-2	99



Data Path : Z:\SVOASRV\HPCHEM1\BNA M\DATA\BM112619\
 Data File : BM023906.D
 Acq On : 27 Nov 2019 00:50
 Operator : JU
 Sample : K5985-09
 Misc :
 ALS Vial : 20 Sample Multiplier: 1

Instrument :
 BNA_M
 ClientSampleId :
 C0B13

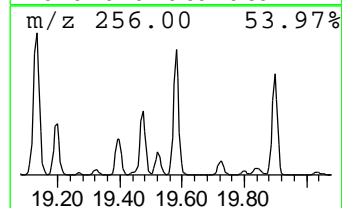
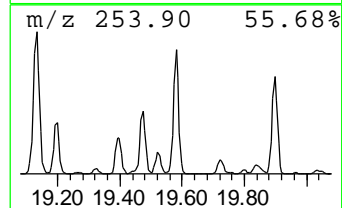
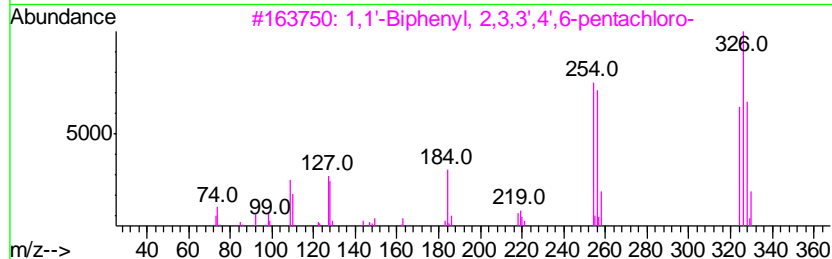
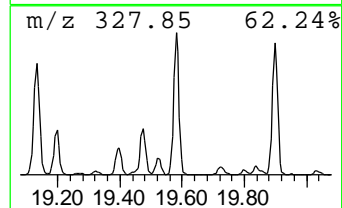
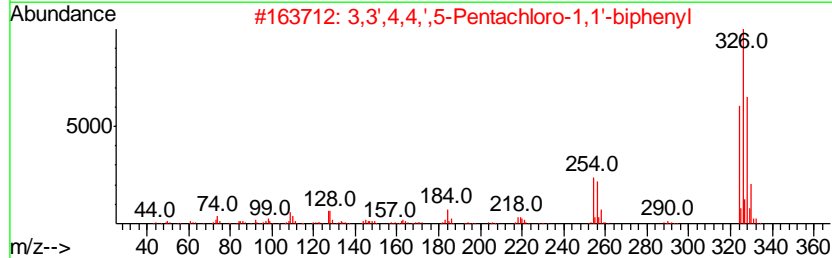
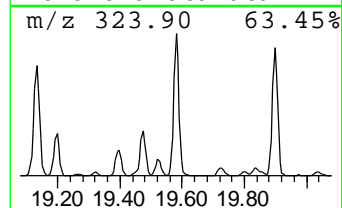
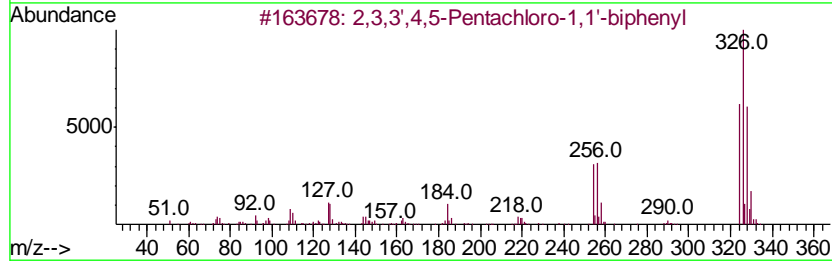
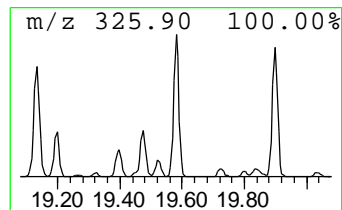
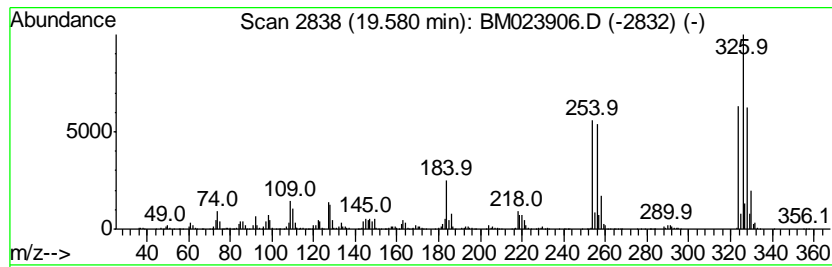
Quant Method : Z:\SVOASRV\HPCHEM1\BNA_M\METHODS\SOM-EPA-BM111119MA.M
 Quant Title : SVOA CALIBRATION

TIC Library : C:\DATABASE\NIST11.L
 TIC Integration Parameters: LSCINT.P

 Peak Number 11 2,3,3',4,5-Pentachloro-1,1'... Concentration Rank 2

R.T.	EstConc	Area	Relative to ISTD	R.T.
19.58	12.40 ng/ul	2856020	Chrysene-d12	21.12

Hit#	of	Tentative ID	MW	MolForm	CAS#	Qual
1	5	2,3,3',4,5-Pentachloro-1,1'-biph...	324	C12H5Cl5	070424-69-0	99
2		3,3',4,4',5-Pentachloro-1,1'-bi...	324	C12H5Cl5	057465-28-8	99
3		1,1'-Biphenyl, 2,3,3',4',6-penta...	324	C12H5Cl5	038380-03-9	99
4		1,1'-Biphenyl, 2,3,3',4',6-penta...	324	C12H5Cl5	038380-03-9	99
5		1,1'-Biphenyl, 2,3,3',4,4'-penta...	324	C12H5Cl5	032598-14-4	99



Data Path : Z:\SVOASRV\HPCHEM1\BNA M\DATA\BM112619\
 Data File : BM023906.D
 Acq On : 27 Nov 2019 00:50
 Operator : JU
 Sample : K5985-09
 Misc :
 ALS Vial : 20 Sample Multiplier: 1

Instrument :
 BNA_M
 ClientSampled :
 C0B13

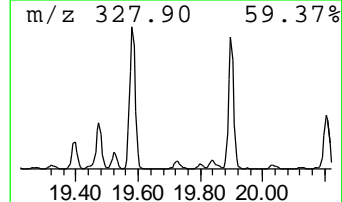
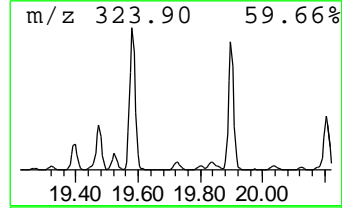
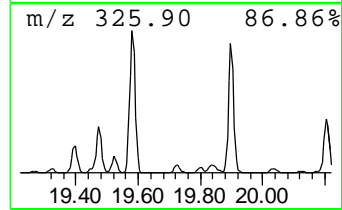
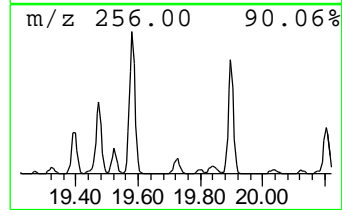
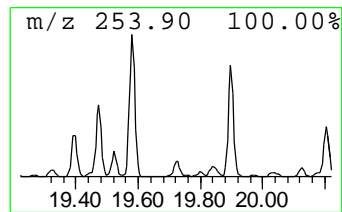
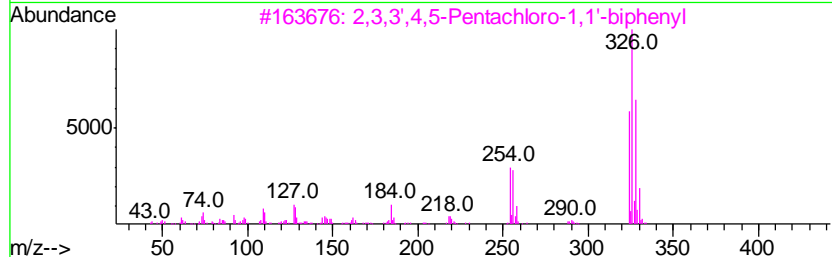
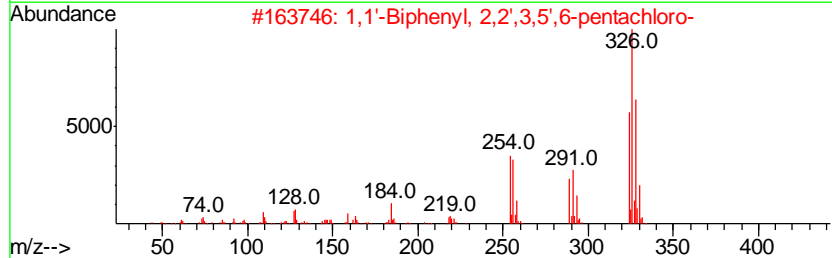
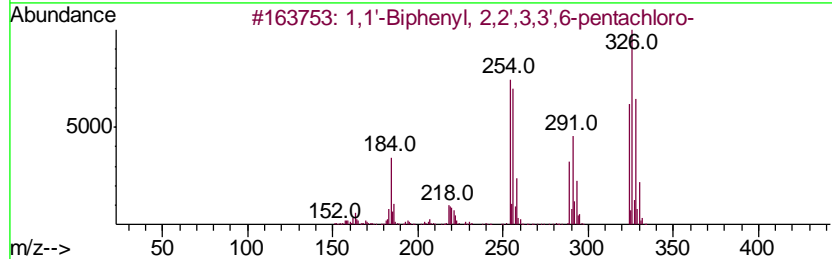
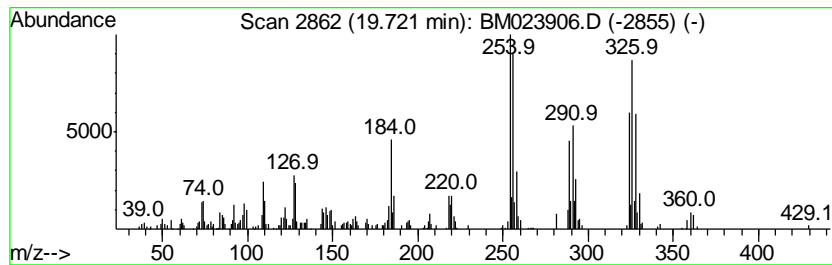
Quant Method : Z:\SVOASRV\HPCHEM1\BNA_M\METHODS\SOM-EPA-BM111119MA.M
 Quant Title : SVOA CALIBRATION

TIC Library : C:\DATABASE\NIST11.L
 TIC Integration Parameters: LSCINT.P

 Peak Number 12 1,1'-Biphenyl, 2,2',3,3',6-... Concentration Rank 18

R.T.	EstConc	Area	Relative to ISTD	R.T.
19.72	2.31 ng/ul	530972	Chrysene-d12	21.12

Hit#	of	Tentative ID	MW	MolForm	CAS#	Qual
1	5	1,1'-Biphenyl, 2,2',3,3',6-penta...	324	C12H5Cl5	052663-60-2	99
2		1,1'-Biphenyl, 2,2',3,5',6-penta...	324	C12H5Cl5	038379-99-6	99
3		2,3,3',4,5-Pentachloro-1,1'-biph...	324	C12H5Cl5	070424-69-0	99
4		2,3,3',4',5'- Pentachloro-1,1'-b...	324	C12H5Cl5	076842-07-4	99
5		(2,3,4,5-Tetrachloro-2,4-cyclope...	324	C12H5Cl5	029887-33-0	99



Data Path : Z:\SVOASRV\HPCHEM1\BNA M\DATA\BM112619\
 Data File : BM023906.D
 Acq On : 27 Nov 2019 00:50
 Operator : JU
 Sample : K5985-09
 Misc :
 ALS Vial : 20 Sample Multiplier: 1

Instrument :
 BNA_M
 ClientSampled :
 C0B13

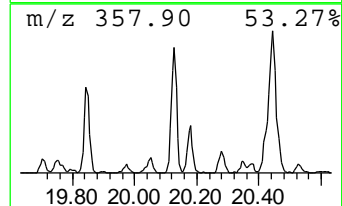
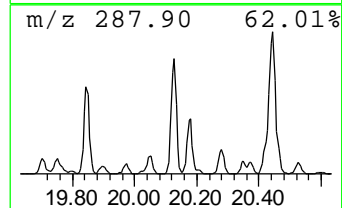
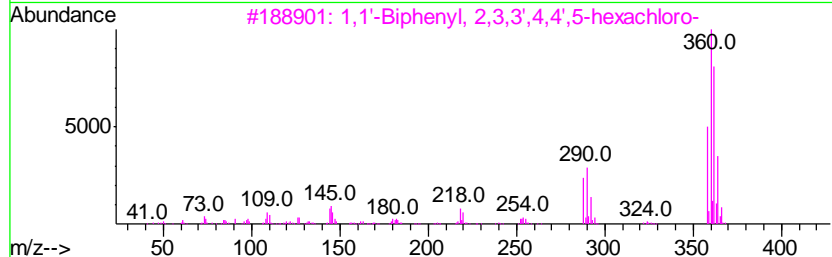
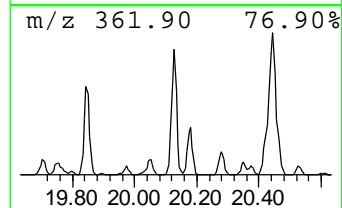
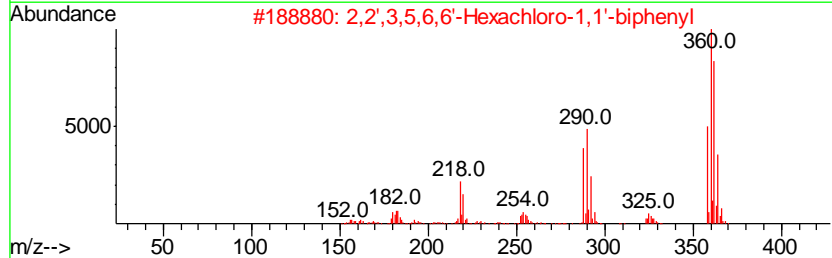
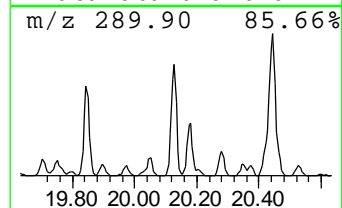
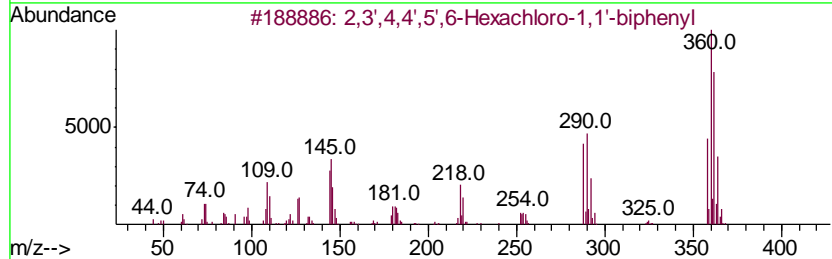
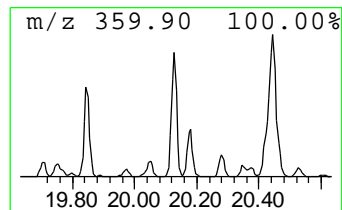
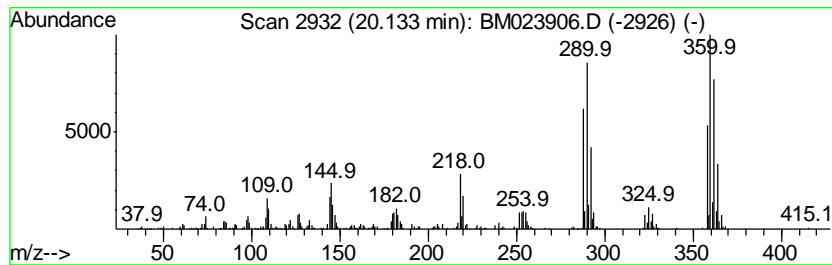
Quant Method : Z:\SVOASRV\HPCHEM1\BNA_M\METHODS\SOM-EPA-BM111119MA.M
 Quant Title : SVOA CALIBRATION

TIC Library : C:\DATABASE\NIST11.L
 TIC Integration Parameters: LSCINT.P

 Peak Number 15 2,3',4,4',5',6-Hexachloro-1... Concentration Rank 9

R.T.	EstConc	Area	Relative to ISTD	R.T.
20.13	5.21 ng/ul	1199670	Chrysene-d12	21.12

Hit#	of	Tentative ID	MW	MolForm	CAS#	Qual
1	5	2,3',4,4',5',6-Hexachloro-1,1'-b...	358	C12H4Cl6	059291-65-5	99
2		2,2',3,5,6,6'-Hexachloro-1,1'-bi...	358	C12H4Cl6	068194-09-2	99
3		1,1'-Biphenyl, 2,3,3',4,4',5-hex...	358	C12H4Cl6	038380-08-4	99
4		2,3,3',4,5',6-Hexachloro-1,1'-bi...	358	C12H4Cl6	074472-43-8	99
5		2,3,3',4,5,5'-Hexachloro-1,1'-bi...	358	C12H4Cl6	039635-35-3	99



Data Path : Z:\SVOASRV\HPCHEM1\BNA M\DATA\BM112619\
 Data File : BM023906.D
 Acq On : 27 Nov 2019 00:50
 Operator : JU
 Sample : K5985-09
 Misc :
 ALS Vial : 20 Sample Multiplier: 1

Instrument :
 BNA_M
 ClientSampled :
 C0B13

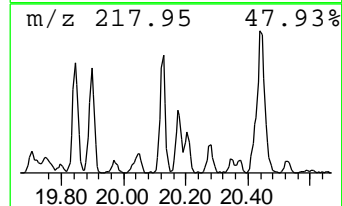
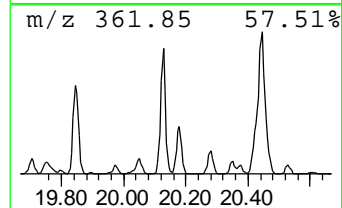
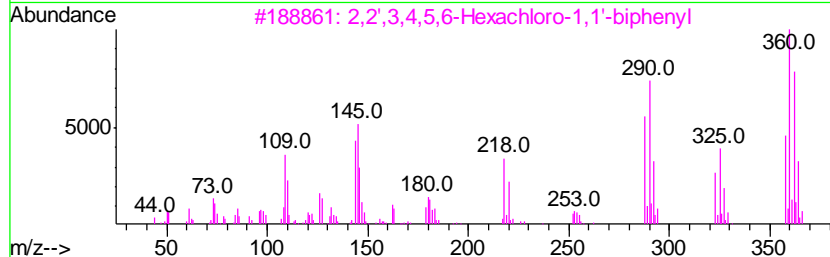
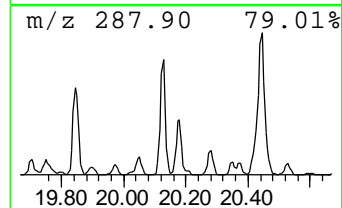
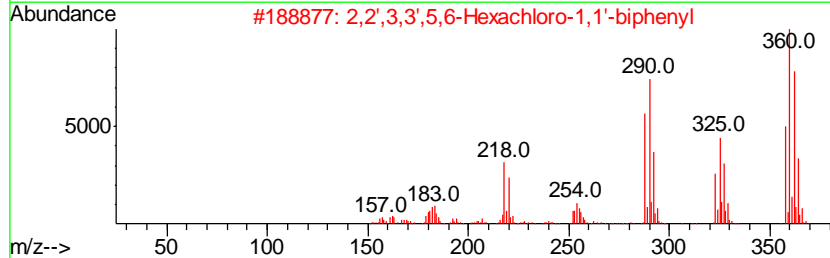
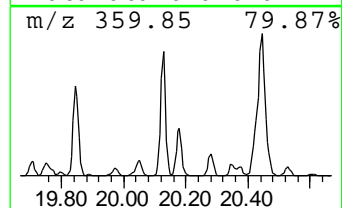
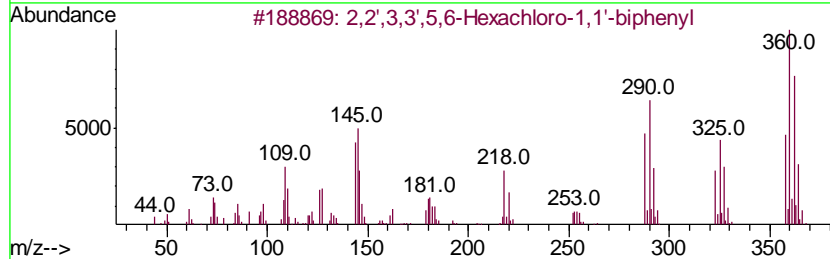
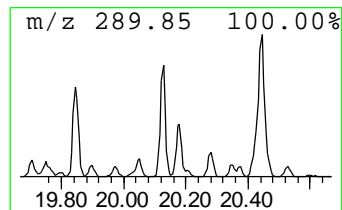
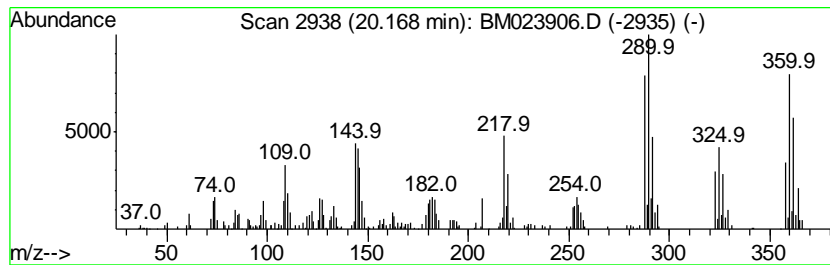
Quant Method : Z:\SVOASRV\HPCHEM1\BNA_M\METHODS\SOM-EPA-BM11119MA.M
 Quant Title : SVOA CALIBRATION

TIC Library : C:\DATABASE\NIST11.L
 TIC Integration Parameters: LSCINT.P

 Peak Number 16 2,2',3,3',5,6-Hexachloro-1,... Concentration Rank 17

R.T.	EstConc	Area	Relative to ISTD	R.T.
20.17	2.52 ng/ul	580727	Chrysene-d12	21.12

Hit#	of	Tentative ID	MW	MolForm	CAS#	Qual
1	5	2,2',3,3',5,6-Hexachloro-1,1'-bi...	358	C12H4Cl6	052704-70-8	99
2		2,2',3,3',5,6-Hexachloro-1,1'-bi...	358	C12H4Cl6	052704-70-8	99
3		2,2',3,4,5,6-Hexachloro-1,1'-bip...	358	C12H4Cl6	041411-61-4	99
4		2,3,3',4,5',6-Hexachloro-1,1'-bi...	358	C12H4Cl6	074472-43-8	99
5		2,2',3,4',5,6-Hexachloro-1,1'-bi...	358	C12H4Cl6	068194-13-8	99



Data Path : Z:\SVOASRV\HPCHEM1\BNA M\DATA\BM112619\
 Data File : BM023906.D
 Acq On : 27 Nov 2019 00:50
 Operator : JU
 Sample : K5985-09
 Misc :
 ALS Vial : 20 Sample Multiplier: 1

Instrument :
 BNA_M
 ClientSampled :
 C0B13

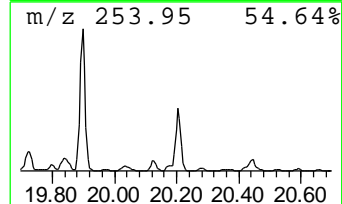
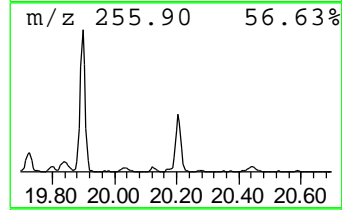
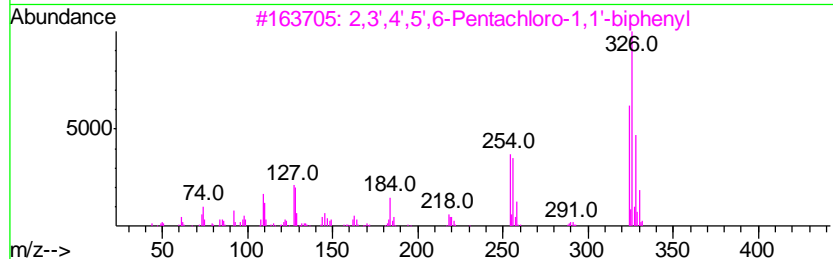
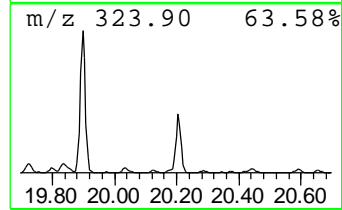
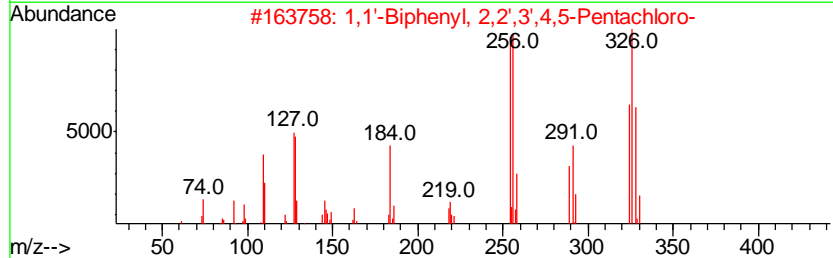
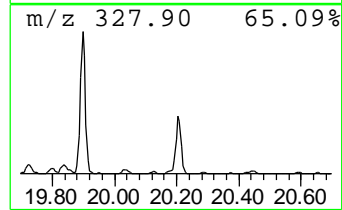
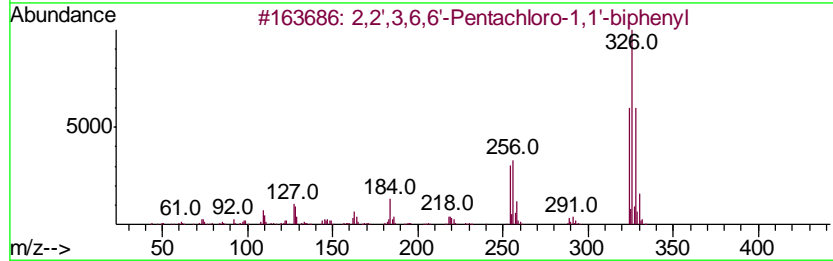
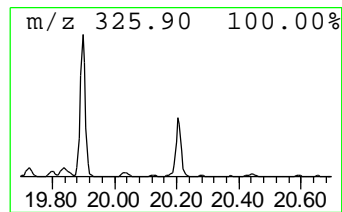
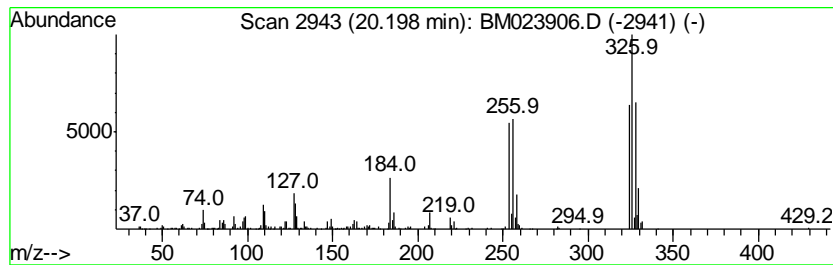
Quant Method : Z:\SVOASRV\HPCHEM1\BNA_M\METHODS\SOM-EPA-BM111119MA.M
 Quant Title : SVOA CALIBRATION

TIC Library : C:\DATABASE\NIST11.L
 TIC Integration Parameters: LSCINT.P

 Peak Number 17 2,2',3,6,6'-Pentachloro-1,1... Concentration Rank 12

R.T.	EstConc	Area	Relative to ISTD	R.T.
20.20	4.25 ng/ul	979573	Chrysene-d12	21.12

Hit#	of	Tentative ID	MW	MolForm	CAS#	Qual
1	5	2,2',3,6,6'-Pentachloro-1,1'-bip...	324	C12H5Cl5	073575-54-9	98
2		1,1'-Biphenyl, 2,2',3',4,5-Penta...	324	C12H5Cl5	041464-51-1	98
3		2,3',4',5',6-Pentachloro-1,1'-bi...	324	C12H5Cl5	074472-39-2	97
4		2,3,3',4,5-Pentachloro-1,1'-biph...	324	C12H5Cl5	070424-69-0	96
5		2,2',3,4,4'-Pentachloro-1,1'-bip...	324	C12H5Cl5	065510-45-4	96



Data Path : Z:\SVOASRV\HPCHEM1\BNA M\DATA\BM112619\
 Data File : BM023906.D
 Acq On : 27 Nov 2019 00:50
 Operator : JU
 Sample : K5985-09
 Misc :
 ALS Vial : 20 Sample Multiplier: 1

Instrument :
 BNA_M
 ClientSampled :
 COB13

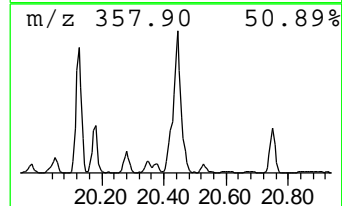
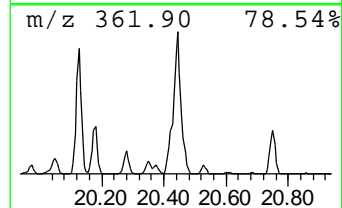
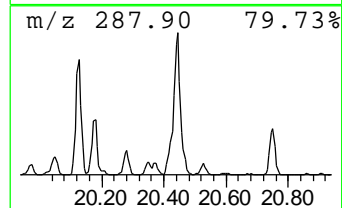
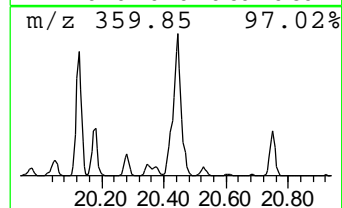
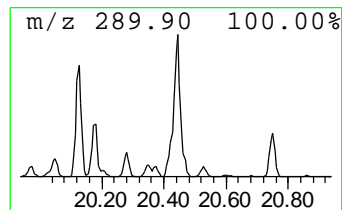
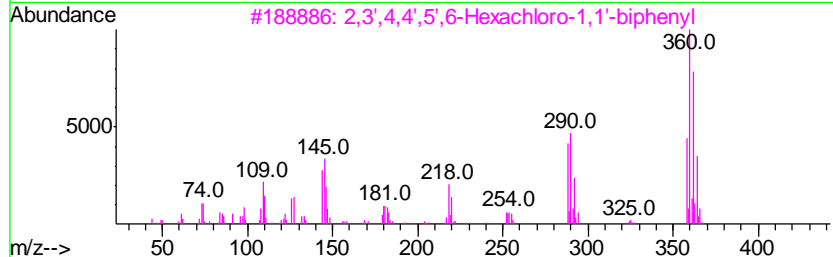
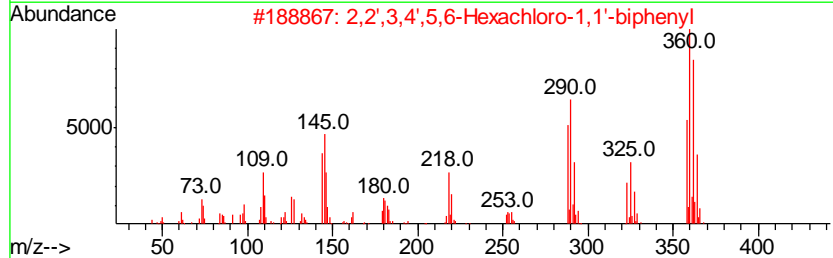
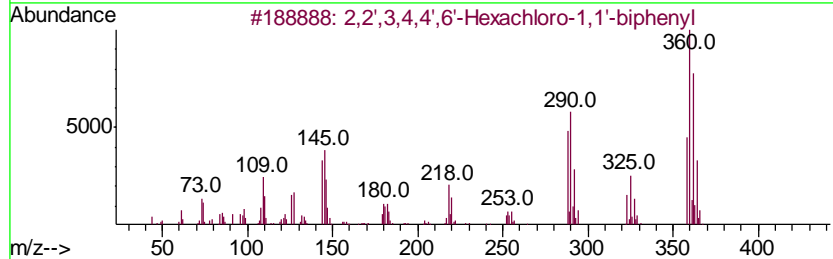
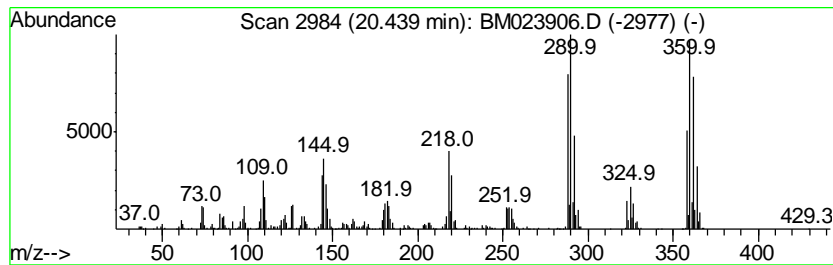
Quant Method : Z:\SVOASRV\HPCHEM1\BNA_M\METHODS\SOM-EPA-BM111119MA.M
 Quant Title : SVOA CALIBRATION

TIC Library : C:\DATABASE\NIST11.L
 TIC Integration Parameters: LSCINT.P

 Peak Number 18 2,2',3,4,4',6'-Hexachloro-1... Concentration Rank 4

R.T.	EstConc	Area	Relative to ISTD	R.T.
20.44	9.05 ng/ul	2083590	Chrysene-d12	21.12

Hit#	of	Tentative ID	MW	MolForm	CAS#	Qual
1	5	2,2',3,4,4',6'-Hexachloro-1,1'-b...	358	C12H4Cl6	059291-64-4	99
2		2,2',3,4',5,6-Hexachloro-1,1'-bi...	358	C12H4Cl6	068194-13-8	99
3		2,3',4,4',5',6-Hexachloro-1,1'-b...	358	C12H4Cl6	059291-65-5	99
4		1,1'-Biphenyl, 2,2',3,4',5',6-he...	358	C12H4Cl6	038380-04-0	99
5		1,1'-Biphenyl, 2,2',3,3',4,6-Hex...	358	C12H4Cl6	061798-70-7	99



Data Path : Z:\SVOASRV\HPCHEM1\BNA M\DATA\BM112619\
 Data File : BM023906.D
 Acq On : 27 Nov 2019 00:50
 Operator : JU
 Sample : K5985-09
 Misc :
 ALS Vial : 20 Sample Multiplier: 1

Instrument :
 BNA_M
 ClientSampled :
 COB13

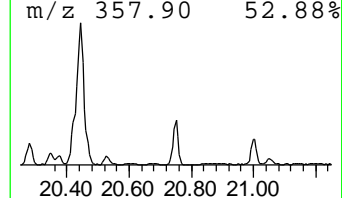
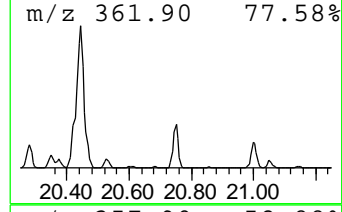
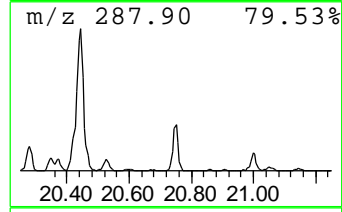
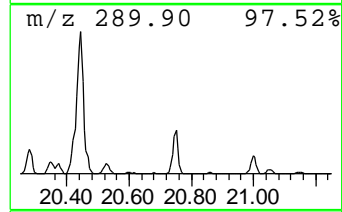
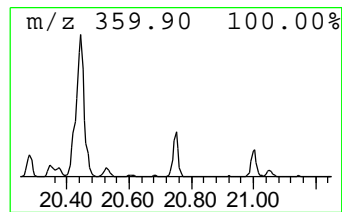
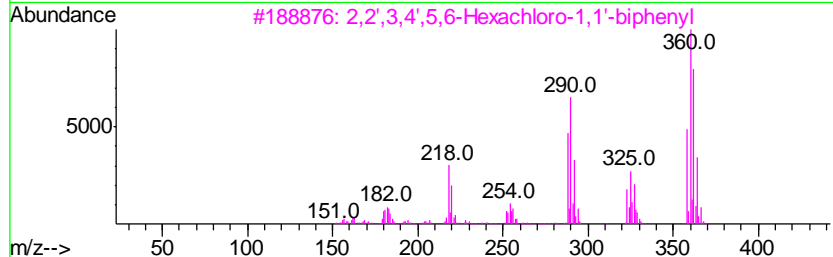
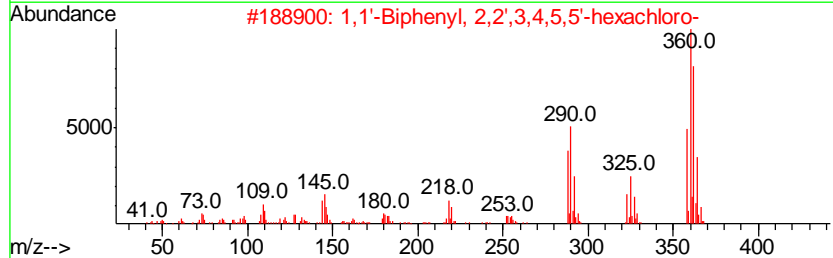
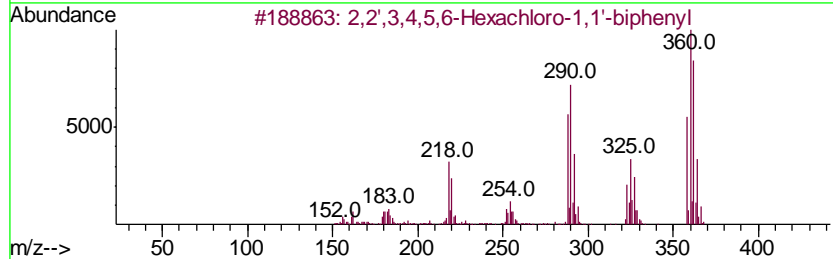
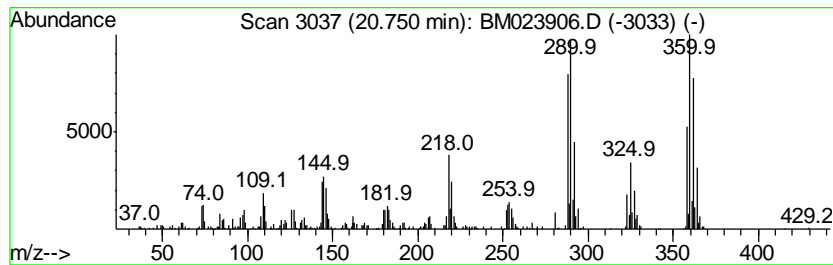
Quant Method : Z:\SVOASRV\HPCHEM1\BNA_M\METHODS\SOM-EPA-BM111119MA.M
 Quant Title : SVOA CALIBRATION

TIC Library : C:\DATABASE\NIST11.L
 TIC Integration Parameters: LSCINT.P

 Peak Number 19 2,2',3,4,5,6-Hexachloro-1,1... Concentration Rank 19

R.T.	EstConc	Area	Relative to ISTD	R.T.
20.75	2.13 ng/ul	491528	Chrysene-d12	21.12

Hit#	of	Tentative ID	MW	MolForm	CAS#	Qual
1	5	2,2',3,4,5,6-Hexachloro-1,1'-bip...	358	C12H4Cl6	041411-61-4	99
2		1,1'-Biphenyl, 2,2',3,4,5,5'-hex...	358	C12H4Cl6	052712-04-6	99
3		2,2',3,4',5,6-Hexachloro-1,1'-bi...	358	C12H4Cl6	068194-13-8	99
4		2,2',3,4',5,6'-Hexachloro-1,1'-b...	358	C12H4Cl6	074472-41-6	99
5		2,2',3,5,6,6'-Hexachloro-1,1'-bi...	358	C12H4Cl6	068194-09-2	99



Data Path : Z:\SVOASRV\HPCHEM1\BNA_M\DATA\BM112619\
 Data File : BM023906.D
 Acq On : 27 Nov 2019 00:50
 Operator : JU
 Sample : K5985-09
 Misc :
 ALS Vial : 20 Sample Multiplier: 1

Instrument :
 BNA_M
 ClientSampleId :
 C0B13

Quant Method : Z:\SVOASRV\HPCHEM1\BNA_M\METHODS\SOM-EPA-BM111119MA.M
 Quant Title : SVOA CALIBRATION

TIC Library : C:\DATABASE\NIST11.L
 TIC Integration Parameters: LSCINT.P

TIC Top Hit name	RT	EstConc	Units	Response	--Internal Standard--			
					#	RT	Resp	Conc
(DEL) Alkane: Str...	2.96	8.3	ng/ul	1313240	1	7.50	3180920	20.0
1,1'-Biphenyl, 2,...	17.99	6.0	ng/ul	1668980	4	16.91	5530750	20.0
1,1'-Biphenyl, 2,...	18.27	2.8	ng/ul	772381	4	16.91	5530750	20.0
2,2',4,5-Tetrachl...	18.82	2.6	ng/ul	727150	4	16.91	5530750	20.0
2,2',3,4',6-Penta...	18.84	8.0	ng/ul	2199230	4	16.91	5530750	20.0
2,2',3,5,6'-Penta...	19.06	2.8	ng/ul	654513	5	21.12	4607120	20.0
1,1'-Biphenyl, 2,...	19.13	13.5	ng/ul	3107780	5	21.12	4607120	20.0
2,3,3',5,5'-Penta...	19.20	4.6	ng/ul	1060510	5	21.12	4607120	20.0
1,1'-Biphenyl, 2,...	19.39	3.3	ng/ul	762927	5	21.12	4607120	20.0
1,1'-Biphenyl, 2,...	19.47	5.9	ng/ul	1350280	5	21.12	4607120	20.0
2,3,3',4,5-Pentac...	19.58	12.4	ng/ul	2856020	5	21.12	4607120	20.0
1,1'-Biphenyl, 2,...	19.72	2.3	ng/ul	530972	5	21.12	4607120	20.0
2,3',4,4',5',6-He...	20.13	5.2	ng/ul	1199670	5	21.12	4607120	20.0
2,2',3,3',5,6-Hex...	20.17	2.5	ng/ul	580727	5	21.12	4607120	20.0
2,2',3,6,6'-Penta...	20.20	4.3	ng/ul	979573	5	21.12	4607120	20.0
2,2',3,4,4',6'-He...	20.44	9.1	ng/ul	2083590	5	21.12	4607120	20.0
2,2',3,4,5,6-Hexa...	20.75	2.1	ng/ul	491528	5	21.12	4607120	20.0