

Data Path : Z:\svoasrv\HPCHEM1\BNA_M\Data\BM112822\
 Data File : BM037753.D
 Acq On : 28 Nov 2022 11:03
 Operator : CG/JU
 Sample : PB149209BL
 Misc :
 ALS Vial : 3 Sample Multiplier: 1

Instrument :
 BNA_M
 ClientSampleId :
 SBLK209

Integration Parameters: LSCINT.P

Integrator: RTE
 Smoothing : OFF Filtering: 5
 Sampling : 1 Min Area: 0.1 % of largest Peak
 Start Thrs: 0.2 Max Peaks: 100
 Stop Thrs : 0 Peak Location: TOP

If leading or trailing edge < 100 prefer < Baseline drop else tangent >
 Peak separation: 5

Method : Z:\svoasrv\HPCHEM1\BNA_M\Methods\SFAM-EPA-BM112322.M
 Title : SVOA CALIBRATION

Signal : TIC: BM037753.D\data.ms

peak #	R.T. min	first scan	max scan	last scan	PK TY	peak height	corr. area	corr. % max.	% of total
1	3.434	5	8	14	rBV	55195	72673	1.59%	0.129%
2	3.875	79	83	100	rBV	463533	797647	17.47%	1.418%
3	4.210	137	140	144	rVB3	20281	27021	0.59%	0.048%
4	7.257	652	658	666	rVB	1058566	1612693	35.32%	2.866%
5	7.428	681	687	696	rVB	799712	1206528	26.42%	2.144%
6	7.634	715	722	733	rBV	1000184	1528724	33.48%	2.717%
7	8.110	795	803	810	rBV	932857	1489492	32.62%	2.647%
8	8.816	914	923	935	rBV	1191863	1922092	42.09%	3.416%
9	9.281	994	1002	1010	rBV	1022390	1683407	36.86%	2.992%
10	10.004	1118	1125	1134	rBV	866778	1365866	29.91%	2.428%
11	10.545	1209	1217	1226	rBV	1164953	1885948	41.30%	3.352%
12	10.928	1275	1282	1290	rBV	1382124	2278924	49.91%	4.051%
13	11.063	1298	1305	1321	rBV	914744	1537185	33.66%	2.732%
14	12.169	1489	1493	1498	rVB5	5934	9390	0.21%	0.017%
15	12.504	1545	1550	1557	rVB	20339	35284	0.77%	0.063%
16	13.480	1712	1716	1720	rVB6	3017	5079	0.11%	0.009%
17	13.627	1735	1741	1744	rBV3	14983	22869	0.50%	0.041%
18	13.710	1751	1755	1759	rVB5	3113	4749	0.10%	0.008%
19	14.139	1821	1828	1839	rBV	2169968	2878556	63.04%	5.116%
20	14.427	1870	1877	1886	rBV	2334719	3326658	72.85%	5.913%
21	14.733	1922	1929	1936	rBV	2137764	3027576	66.30%	5.381%
22	14.810	1938	1942	1949	rVB9	6326	10457	0.23%	0.019%
23	14.916	1951	1960	1971	rBV	1138874	1669927	36.57%	2.968%
24	15.086	1987	1989	1994	rVV5	4842	7151	0.16%	0.013%
25	15.133	1994	1997	2003	rVB8	6432	11328	0.25%	0.020%
26	15.721	2083	2097	2106	rBV	2925780	4058115	88.87%	7.213%
27	15.827	2109	2115	2126	rVV	985931	1305073	28.58%	2.320%
28	15.963	2133	2138	2142	rVB4	13406	20135	0.44%	0.036%
29	16.574	2239	2242	2246	rBV6	3260	5518	0.12%	0.010%
30	16.933	2299	2303	2309	rVB3	8659	11072	0.24%	0.020%
31	17.145	2336	2339	2343	rBV6	3637	5392	0.12%	0.010%
32	17.257	2353	2358	2362	rBV3	6629	9916	0.22%	0.018%
33	17.363	2373	2376	2378	rBV4	4432	5619	0.12%	0.010%
34	17.468	2387	2394	2403	rBV	2560787	3489283	76.41%	6.202%
35	17.568	2405	2411	2420	rVV	3206862	4380188	95.92%	7.785%
36	18.004	2482	2485	2488	rBV5	5657	8230	0.18%	0.015%

Data Path : Z:\svoasrv\HPCHEM1\BNA_M\Data\BM112822\
 Data File : BM037753.D
 Acq On : 28 Nov 2022 11:03
 Operator : CG/JU
 Sample : PB149209BL
 Misc :
 ALS Vial : 3 Sample Multiplier: 1

Instrument :
 BNA_M
 ClientSampleId :
 SBLK209

Integration Parameters: LSCINT.P
 Integrator: RTE
 Smoothing : OFF Filtering: 5
 Sampling : 1 Min Area: 0.1 % of largest Peak
 Start Thrs: 0.2 Max Peaks: 100
 Stop Thrs : 0 Peak Location: TOP

If leading or trailing edge < 100 prefer < Baseline drop else tangent >
 Peak separation: 5

Method : Z:\svoasrv\HPCHEM1\BNA_M\Methods\SFAM-EPA-BM112322.M
 Title : SVOA CALIBRATION

37	18.127	2502	2506	2509	rBV5	10225	10063	0.22%	0.018%
38	18.339	2539	2542	2548	rBV8	11766	17275	0.38%	0.031%
39	19.415	2721	2725	2730	rBV2	37978	46370	1.02%	0.082%
40	19.480	2733	2736	2740	rVV	30204	39917	0.87%	0.071%
41	19.851	2793	2799	2805	rBV	3560564	4566418	100.00%	8.116%
42	20.821	2961	2964	2968	rVB	65752	66175	1.45%	0.118%
43	21.633	3097	3102	3109	rBV	2524384	3315060	72.60%	5.892%
44	23.962	3491	3498	3509	rVB2	1724264	3803966	83.30%	6.761%
45	24.127	3519	3526	3537	rVB2	1325752	2681174	58.72%	4.765%

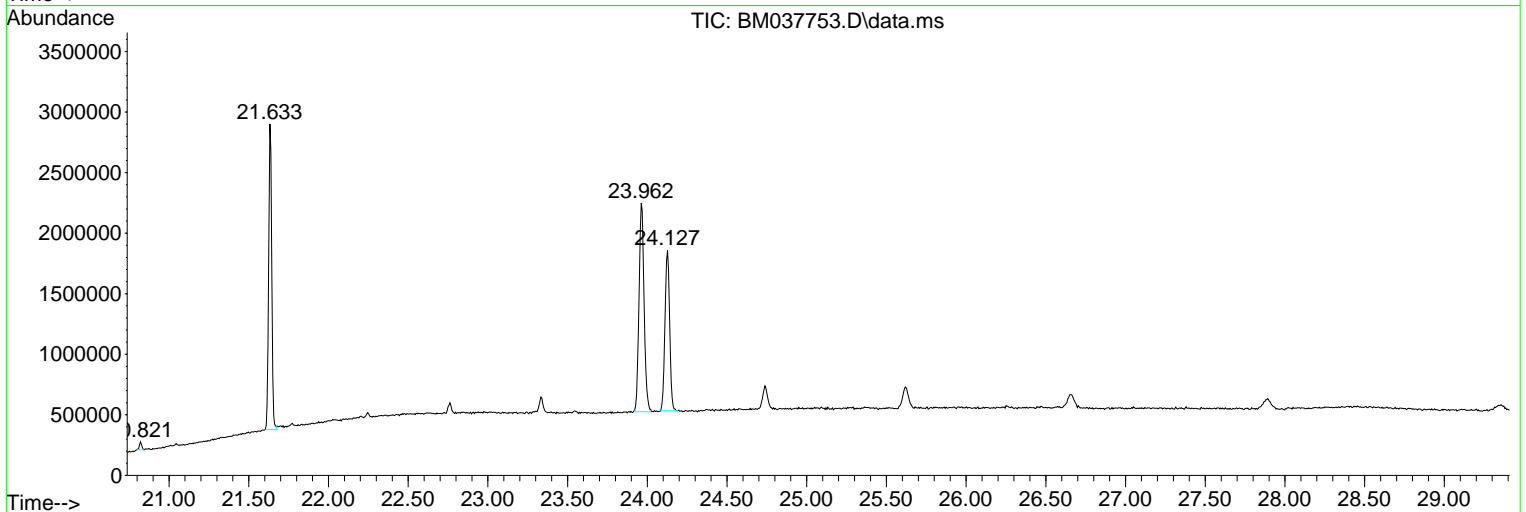
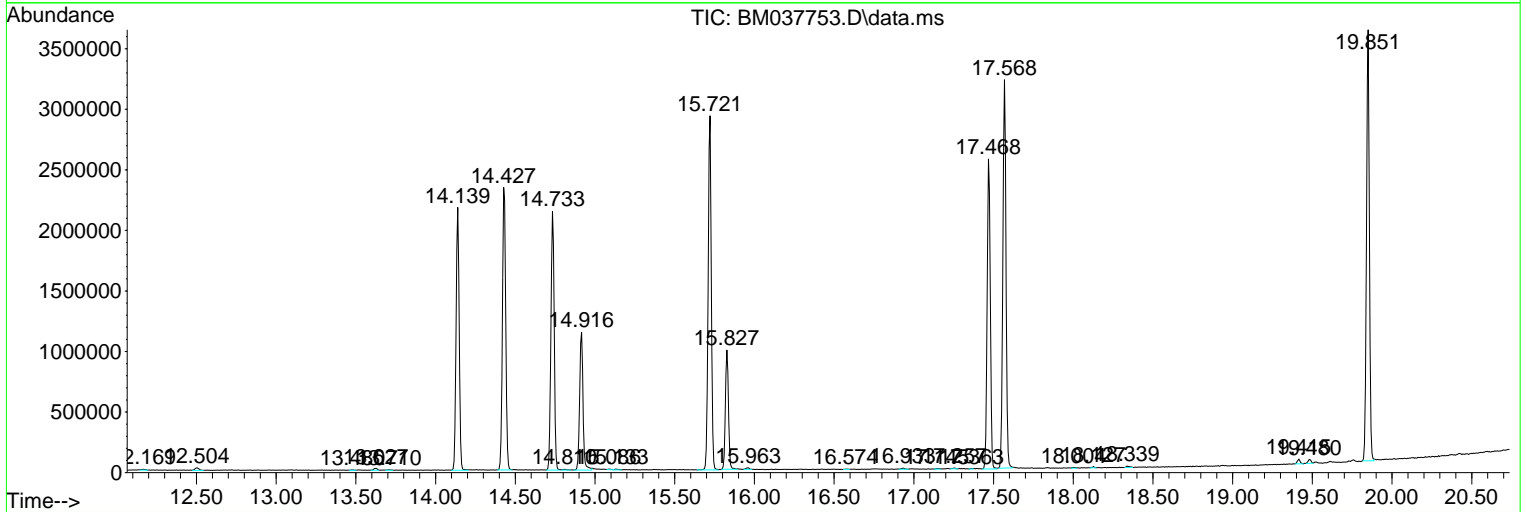
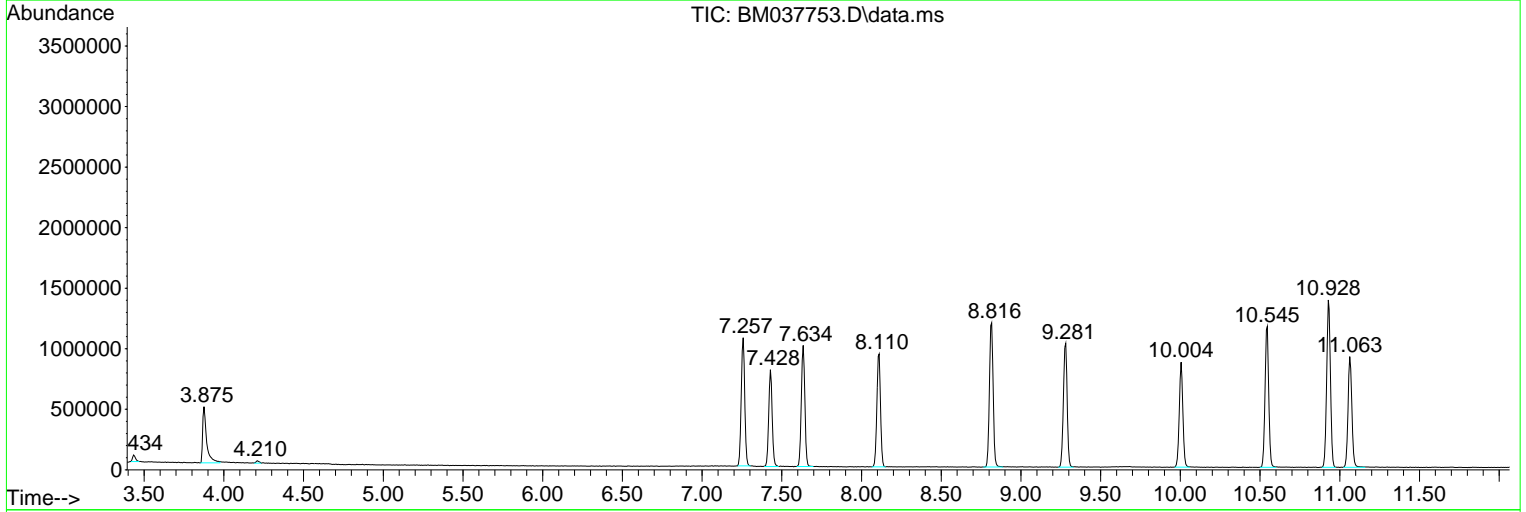
Sum of corrected areas: 56262183

Data Path : Z:\svoasrv\HPCHEM1\BNA_M\Data\BM112822\
 Data File : BM037753.D
 Acq On : 28 Nov 2022 11:03
 Operator : CG/JU
 Sample : PB149209BL
 Misc :
 ALS Vial : 3 Sample Multiplier: 1

Instrument :
 BNA_M
ClientSampleId :
 SBLK209

Quant Method : Z:\svoasrv\HPCHEM1\BNA_M\Methods\SFAM-EPA-BM112322.M
 Quant Title : SVOA CALIBRATION

TIC Library : C:\Database\NIST20.L
 TIC Integration Parameters: LSCINT.P



Data Path : Z:\svoasrv\HPCHEM1\BNA_M\Data\BM112822\
Data File : BM037753.D
Acq On : 28 Nov 2022 11:03
Operator : CG/JU
Sample : PB149209BL
Misc :
ALS Vial : 3 Sample Multiplier: 1

Instrument :
BNA_M
ClientSampleId :
SBLK209

Quant Method : Z:\svoasrv\HPCHEM1\BNA_M\Methods\SFAM-EPA-BM112322.M
Quant Title : SVOA CALIBRATION

TIC Library : C:\Database\NIST20.L
TIC Integration Parameters: LSCINT.P

No Library Search Compounds Detected

Data Path : Z:\svoasrv\HPCHEM1\BNA_M\Data\BM112822\
Data File : BM037753.D
Acq On : 28 Nov 2022 11:03
Operator : CG/JU
Sample : PB149209BL
Misc :
ALS Vial : 3 Sample Multiplier: 1

Instrument :
BNA_M
ClientSampleId :
SBLK209

Quant Method : Z:\svoasrv\HPCHEM1\BNA_M\Methods\SFAM-EPA-BM112322.M
Quant Title : SVOA CALIBRATION

TIC Library : C:\Database\NIST20.L
TIC Integration Parameters: LSCINT.P

TIC Top Hit name	RT	EstConc	Units	Response	#	RT	Resp	Conc
------------------	----	---------	-------	----------	---	----	------	------
