

Data Path : Z:\SVOASRV\HPCHEM1\BNA M\DATA\BM112918\  
 Data File : BM017798.D  
 Acq On : 29 Nov 2018 16:34  
 Operator : JU/SJ  
 Sample : AR1660-50PPM  
 Misc :  
 ALS Vial : 8 Sample Multiplier: 1

Instrument :  
 BNA\_M  
 LabSampleId :  
 AR1660-50PPM

Integration Parameters: LSCINT.P

Integrator: RTE  
 Smoothing : OFF Filtering: 5  
 Sampling : 1 Min Area: 0.1 % of largest Peak  
 Start Thrs: 0.2 Max Peaks: 100  
 Stop Thrs : 0 Peak Location: TOP

If leading or trailing edge < 100 prefer < Baseline drop else tangent >  
 Peak separation: 5

Method : Z:\SVOASRV\HPCHEM1\BNA\_M\METHODS\SOM-EPA-BM111918MA.M  
 Title : SVOA CALIBRATION

Signal : TIC

peak #	R.T. min	first scan	max scan	last scan	PK TY	peak height	corr. area	corr. % max.	% of total
1	3.023	3	6	8	rBV	19773	19898	0.52%	0.098%
2	3.046	8	10	12	rVV2	10838	11020	0.29%	0.055%
3	3.070	12	14	16	rVV3	17238	15355	0.40%	0.076%
4	3.105	16	20	28	rVV	350214	346662	8.98%	1.715%
5	3.164	28	30	33	rVB2	3861	3954	0.10%	0.020%
6	3.234	39	42	45	rVB4	3510	4393	0.11%	0.022%
7	3.381	66	67	71	rBV3	3210	4091	0.11%	0.020%
8	3.423	71	74	78	rVB3	9749	11625	0.30%	0.058%
9	4.011	171	174	180	rBV5	3367	5864	0.15%	0.029%
10	4.070	180	184	187	rVB3	4101	4564	0.12%	0.023%
11	4.164	196	200	204	rBV4	2429	4151	0.11%	0.021%
12	7.587	774	782	799	rBV	814203	1406016	36.40%	6.956%
13	10.357	1244	1253	1274	rBV	1009884	1867026	48.34%	9.237%
14	14.234	1905	1912	1931	rBV2	1523257	2539419	65.75%	12.564%
15	15.286	2083	2091	2103	rBV4	22085	51749	1.34%	0.256%
16	16.210	2244	2248	2250	rVB3	4118	4661	0.12%	0.023%
17	16.775	2340	2344	2349	rBV5	5307	9342	0.24%	0.046%
18	16.992	2374	2381	2398	rBV	1974798	3122157	80.84%	15.447%
19	18.075	2560	2565	2569	rBV4	10861	17152	0.44%	0.085%
20	18.922	2704	2709	2715	rBV2	118632	150016	3.88%	0.742%
21	19.127	2741	2744	2749	rBV6	13681	18273	0.47%	0.090%
22	19.210	2753	2758	2764	rVB2	155040	207102	5.36%	1.025%
23	19.269	2766	2768	2770	rBV3	5551	5273	0.14%	0.026%
24	19.345	2778	2781	2786	rBV5	6548	10547	0.27%	0.052%
25	19.469	2800	2802	2806	rVV4	5295	5433	0.14%	0.027%
26	19.545	2813	2815	2821	rVB6	19860	30504	0.79%	0.151%
27	19.598	2822	2824	2826	rBV2	5881	5704	0.15%	0.028%
28	19.633	2826	2830	2832	rVV3	63178	83012	2.15%	0.411%
29	19.657	2832	2834	2840	rVB3	67865	80116	2.07%	0.396%
30	19.774	2850	2854	2858	rBV2	121056	151722	3.93%	0.751%
31	19.821	2858	2862	2870	rBV7	58069	93359	2.42%	0.462%
32	19.921	2874	2879	2884	rBV	352225	447902	11.60%	2.216%
33	19.974	2884	2888	2895	rVV8	30600	43319	1.12%	0.214%
34	20.051	2897	2901	2905	rVV6	17760	24729	0.64%	0.122%

Data Path : Z:\SVOASRV\HPCHEM1\BNA M\DATA\BM112918\  
 Data File : BM017798.D  
 Acq On : 29 Nov 2018 16:34  
 Operator : JU/SJ  
 Sample : AR1660-50PPM  
 Misc :  
 ALS Vial : 8 Sample Multiplier: 1

Instrument :  
 BNA\_M  
 LabSampleId :  
 AR1660-50PPM

## Integration Parameters: LSCINT.P

Integrator: RTE  
 Smoothing : OFF Filtering: 5  
 Sampling : 1 Min Area: 0.1 % of largest Peak  
 Start Thrs: 0.2 Max Peaks: 100  
 Stop Thrs : 0 Peak Location: TOP

If leading or trailing edge < 100 prefer < Baseline drop else tangent >  
 Peak separation: 5

Method : Z:\SVOASRV\HPCHEM1\BNA\_M\METHODS\SOM-EPA-BM111918MA.M  
 Title : SVOA CALIBRATION

35	20.121	2910	2913	2917	rVB4	50719	58631	1.52%	0.290%
36	20.198	2922	2926	2931	rBV	428791	495061	12.82%	2.449%
37	20.251	2931	2935	2941	rVV2	117715	148903	3.86%	0.737%
38	20.357	2948	2953	2959	rBV4	154183	226722	5.87%	1.122%
39	20.451	2966	2969	2973	rVB5	32487	37633	0.97%	0.186%
40	20.516	2973	2980	2986	rBV2	277584	530860	13.74%	2.626%
41	20.568	2986	2989	2992	rVB4	32966	36664	0.95%	0.181%
42	20.663	3002	3005	3009	rVB2	198965	221770	5.74%	1.097%
43	20.727	3012	3016	3021	rVB3	99429	111655	2.89%	0.552%
44	20.827	3030	3033	3036	rBV5	35849	37253	0.96%	0.184%
45	20.933	3047	3051	3057	rBV2	179614	232570	6.02%	1.151%
46	20.992	3057	3061	3066	rBV5	99937	145897	3.78%	0.722%
47	21.045	3068	3070	3073	rVB3	39399	39588	1.02%	0.196%
48	21.198	3090	3096	3105	rVB	2554268	3862250	100.00%	19.109%
49	21.533	3149	3153	3158	rBV5	160459	218603	5.66%	1.082%
50	21.586	3160	3162	3167	rVB5	73223	85522	2.21%	0.423%
51	21.651	3171	3173	3179	rVB7	78290	94777	2.45%	0.469%
52	23.380	3460	3467	3479	rBV	1456422	2821419	73.05%	13.959%

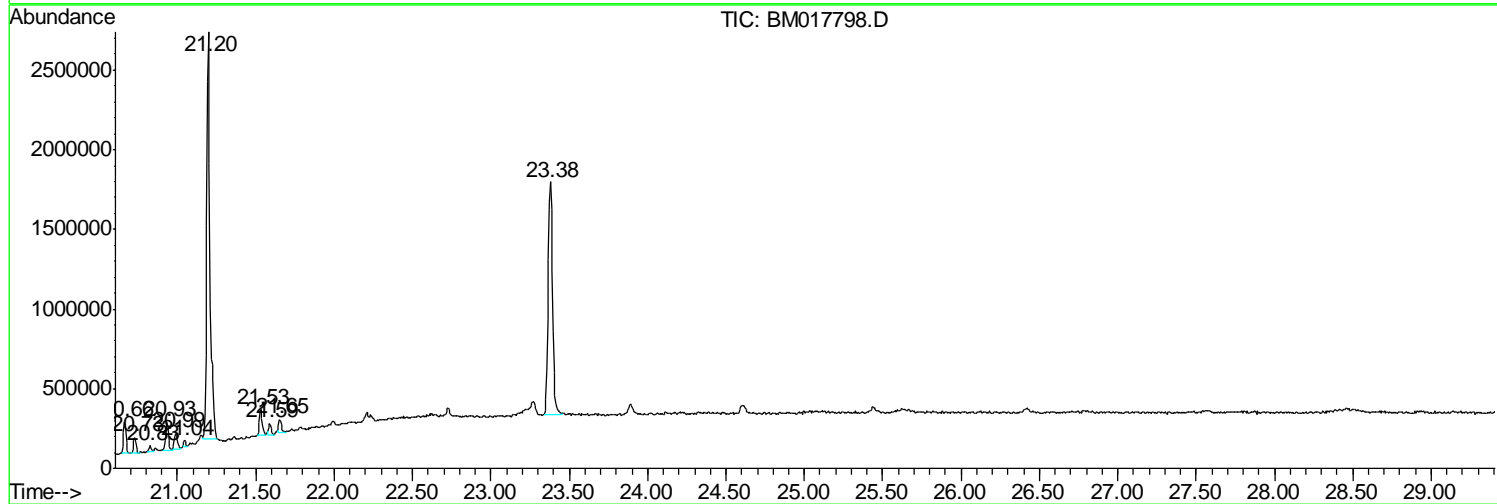
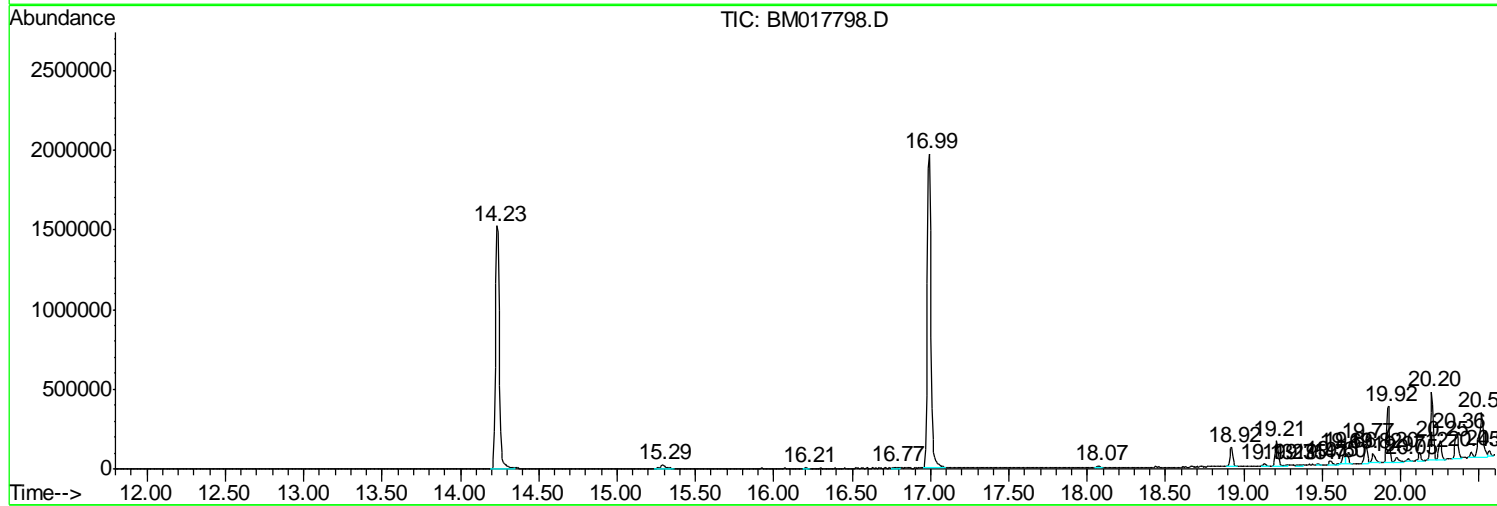
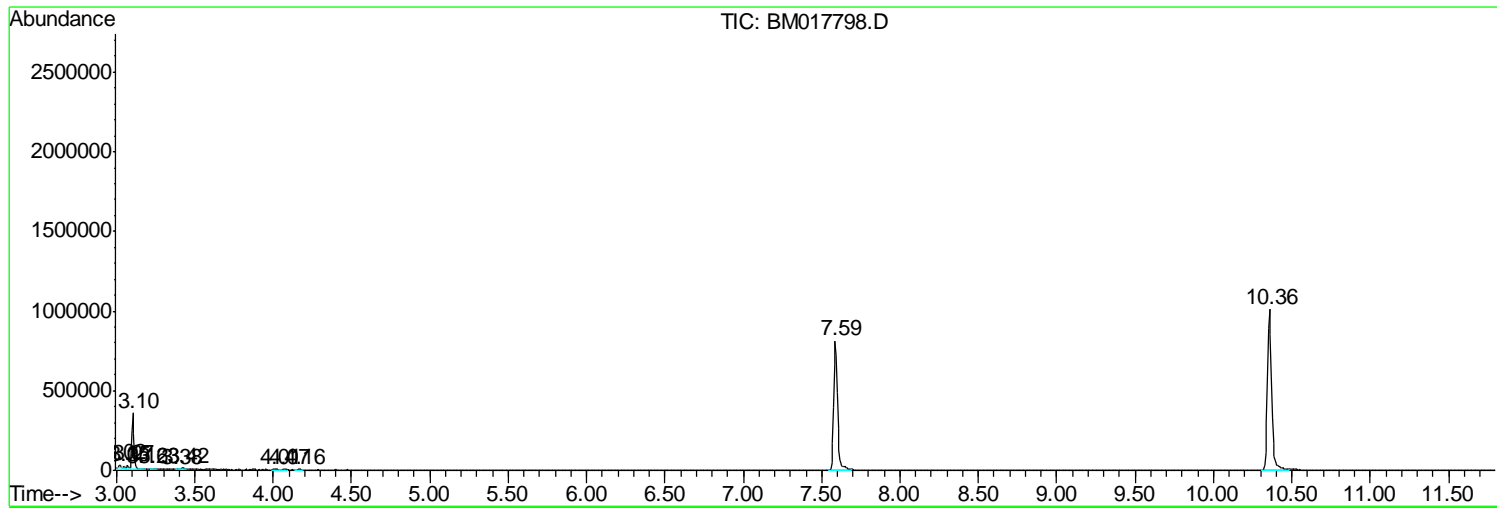
Sum of corrected areas: 20211888

Data Path : Z:\SVOASRV\HPCHEM1\BNA M\DATA\BM112918\  
 Data File : BM017798.D  
 Acq On : 29 Nov 2018 16:34  
 Operator : JU/SJ  
 Sample : AR1660-50PPM  
 Misc :  
 ALS Vial : 8 Sample Multiplier: 1

**Instrument :**  
 BNA\_M  
**LabSampleId :**  
 AR1660-50PPM

Quant Method : Z:\SVOASRV\HPCHEM1\BNA\_M\METHODS\SOM-EPA-BM11918MA.M  
 Quant Title : SVOA CALIBRATION

TIC Library : C:\DATABASE\NIST02.L  
 TIC Integration Parameters: LSCINT.P



Data Path : Z:\SVOASRV\HPCHEM1\BNA M\DATA\BM112918\  
 Data File : BM017798.D  
 Acq On : 29 Nov 2018 16:34  
 Operator : JU/SJ  
 Sample : AR1660-50PPM  
 Misc :  
 ALS Vial : 8 Sample Multiplier: 1

Instrument :  
 BNA\_M  
 LabSampleID :  
 AR1660-50PPM

Quant Method : Z:\SVOASRV\HPCHEM1\BNA\_M\METHODS\SOM-EPA-BM11918MA.M  
 Quant Title : SVOA CALIBRATION

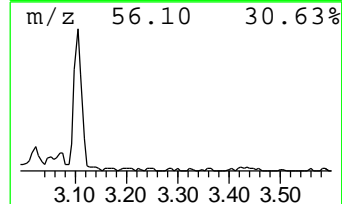
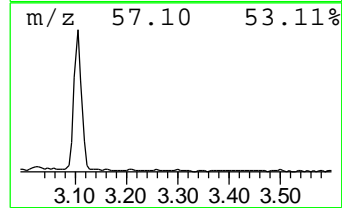
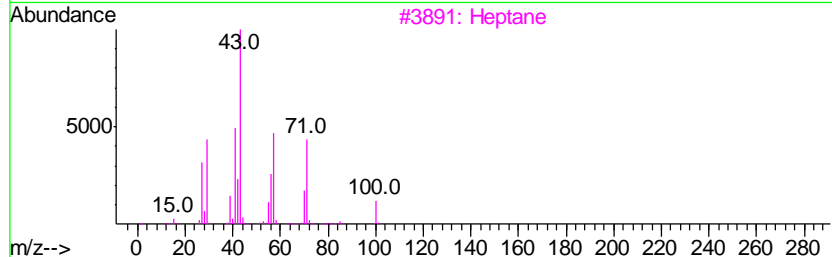
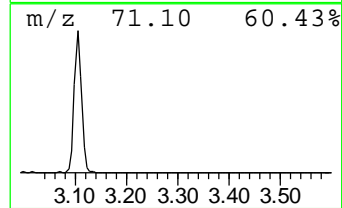
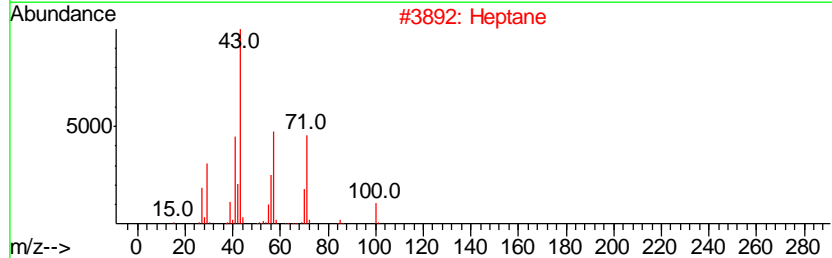
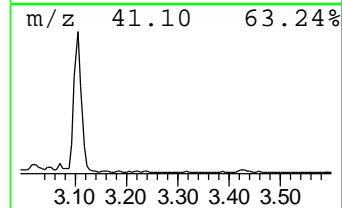
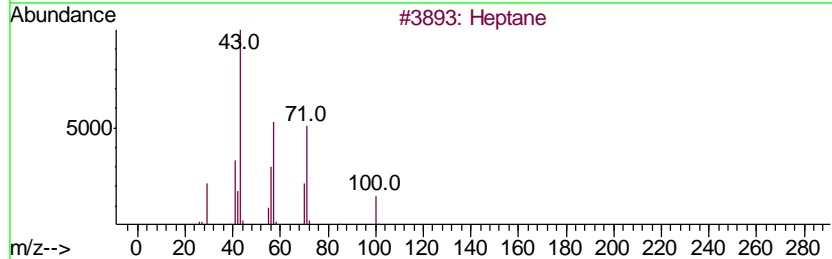
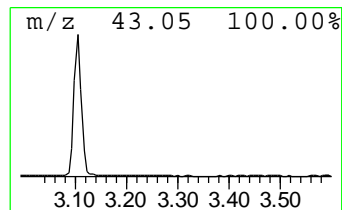
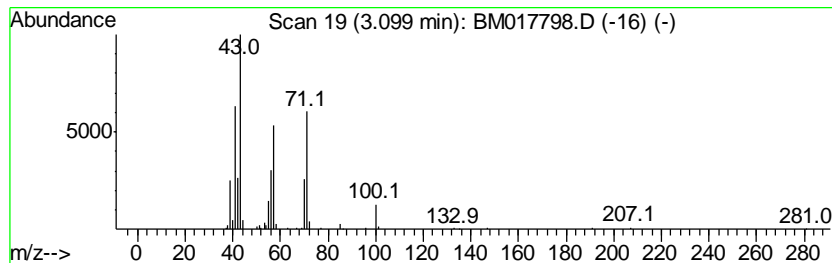
TIC Library : C:\DATABASE\NIST02.L  
 TIC Integration Parameters: LSCINT.P

\*\*\*\*\*  
 Peak Number 1 (DEL) Alkane: Straight-Chai... Concentration Rank 1

R.T.	EstConc	Area	Relative to ISTD	R.T.
3.10	4.93 ng/ul	346662	1,4-Dichlorobenzene-d4	7.59

Hit#	of	Tentative ID	MW	MolForm	CAS#	Qual
1	5	Heptane	100	C7H16	000142-82-5	91
2		Heptane	100	C7H16	000142-82-5	90
3		Heptane	100	C7H16	000142-82-5	90
4		Heptane	100	C7H16	000142-82-5	86
5		Pentane, 3,3-dimethyl-	100	C7H16	000562-49-2	40



Data Path : Z:\SVOASRV\HPCHEM1\BNA M\DATA\BM112918\  
 Data File : BM017798.D  
 Acq On : 29 Nov 2018 16:34  
 Operator : JU/SJ  
 Sample : AR1660-50PPM  
 Misc :  
 ALS Vial : 8 Sample Multiplier: 1

Instrument :  
 BNA\_M  
 LabSampleID :  
 AR1660-50PPM

Quant Method : Z:\SVOASRV\HPCHEM1\BNA\_M\METHODS\SOM-EPA-BM11918MA.M  
 Quant Title : SVOA CALIBRATION

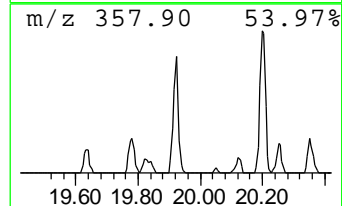
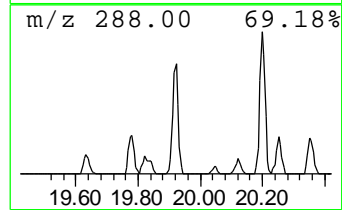
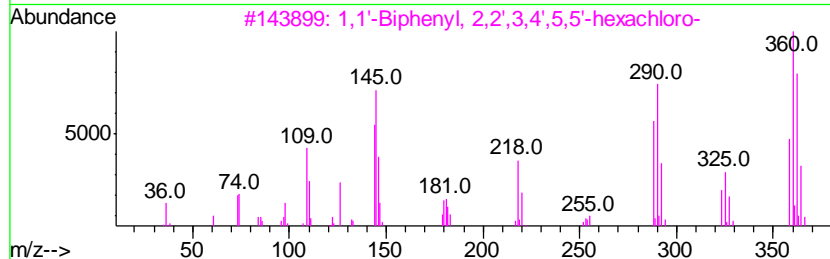
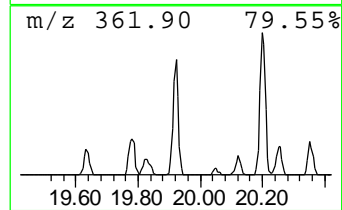
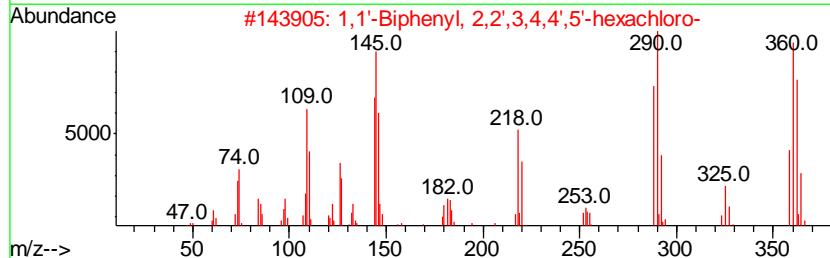
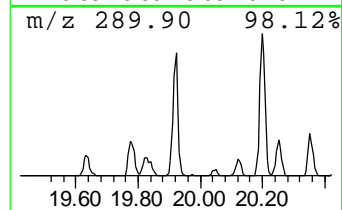
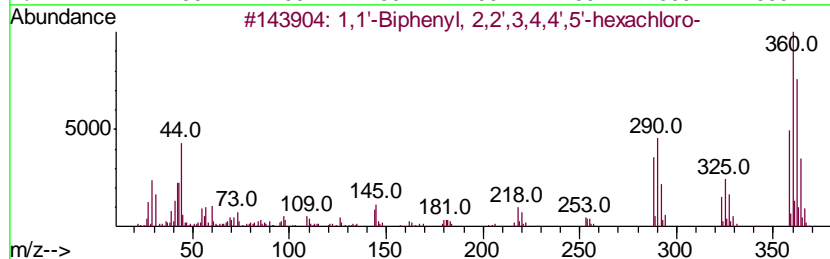
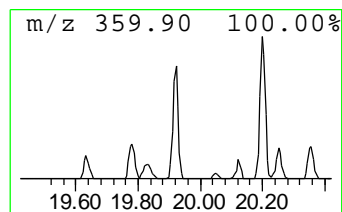
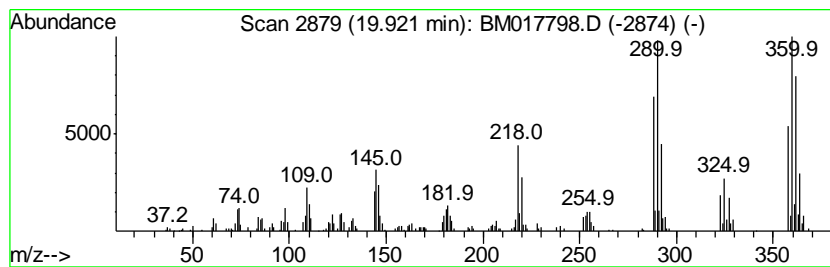
TIC Library : C:\DATABASE\NIST02.L  
 TIC Integration Parameters: LSCINT.P

\*\*\*\*\*  
 Peak Number 2 1,1'-Biphenyl, 2,2',3,4,4',... Concentration Rank 4

R.T.	EstConc	Area	Relative to ISTD	R.T.
19.92	2.32 ng/ul	447902	Chrysene-d12	21.20

Hit#	of	Tentative ID	MW	MolForm	CAS#	Qual
1	5	1,1'-Biphenyl, 2,2',3,4,4',5'-he...	358	C12H4Cl6	035065-28-2	99
2		1,1'-Biphenyl, 2,2',3,4,4',5'-he...	358	C12H4Cl6	035065-28-2	99
3		1,1'-Biphenyl, 2,2',3,4',5,5'-he...	358	C12H4Cl6	051908-16-8	99
4		1,1'-Biphenyl, 2,2',3,4,5,5'-hex...	358	C12H4Cl6	052712-04-6	99
5		1,1'-Biphenyl, 2,2',3,3',5,6'-he...	358	C12H4Cl6	052744-13-5	96



Data Path : Z:\SVOASRV\HPCHEM1\BNA M\DATA\BM112918\  
 Data File : BM017798.D  
 Acq On : 29 Nov 2018 16:34  
 Operator : JU/SJ  
 Sample : AR1660-50PPM  
 Misc :  
 ALS Vial : 8 Sample Multiplier: 1

Instrument :  
 BNA\_M  
 LabSampleId :  
 AR1660-50PPM

Quant Method : Z:\SVOASRV\HPCHEM1\BNA\_M\METHODS\SOM-EPA-BM11918MA.M  
 Quant Title : SVOA CALIBRATION

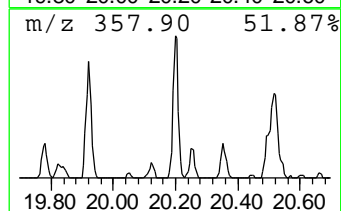
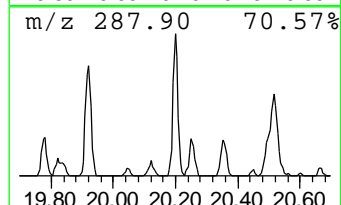
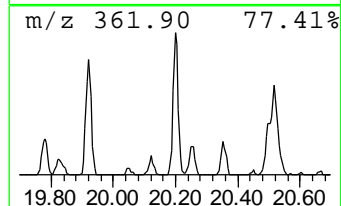
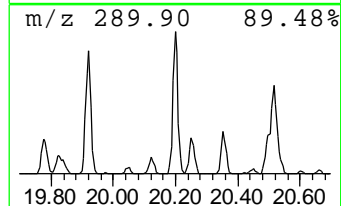
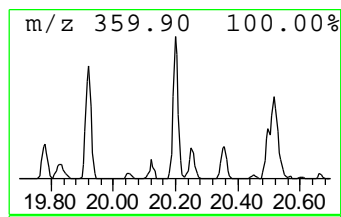
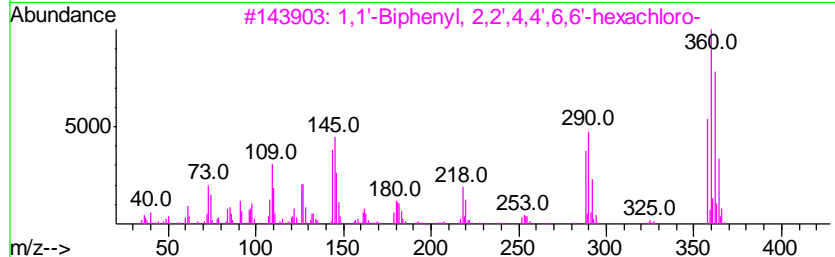
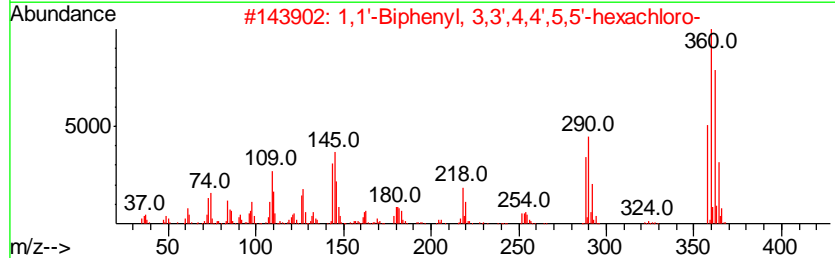
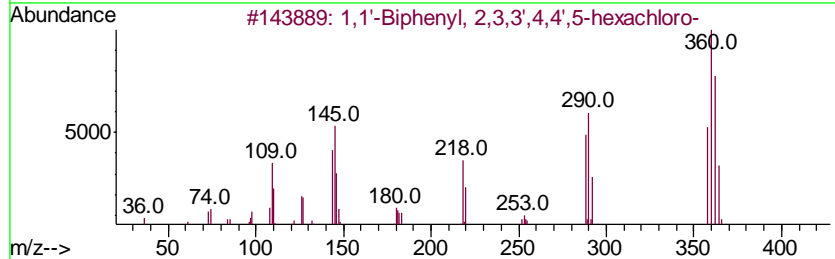
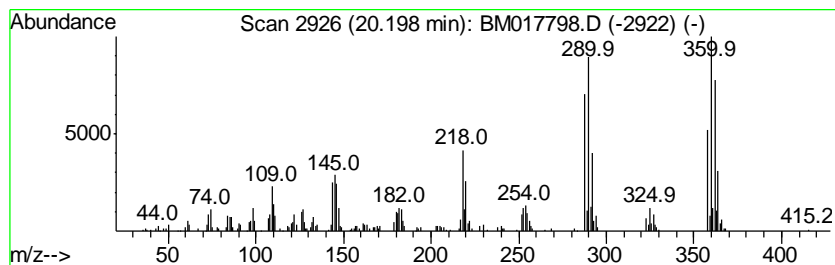
TIC Library : C:\DATABASE\NIST02.L  
 TIC Integration Parameters: LSCINT.P

\*\*\*\*\*  
 Peak Number 3 1,1'-Biphenyl, 2,3,3',4,4',... Concentration Rank 3

R.T.	EstConc	Area	Relative to ISTD	R.T.
20.20	2.56 ng/ul	495061	Chrysene-d12	21.20

Hit#	of	Tentative ID	MW	MolForm	CAS#	Qual
1	5	1,1'-Biphenyl, 2,3,3',4,4',5-hex...	358	C12H4Cl6	038380-08-4	99
2		1,1'-Biphenyl, 3,3',4,4',5,5'-he...	358	C12H4Cl6	032774-16-6	99
3		1,1'-Biphenyl, 2,2',4,4',6,6'-he...	358	C12H4Cl6	033979-03-2	98
4		1,1'-Biphenyl, 2,3,3',4,5,6-hexa...	358	C12H4Cl6	041411-62-5	98
5		1,1'-Biphenyl, 2,2',3,3',4,5-hex...	358	C12H4Cl6	055215-18-4	96



Data Path : Z:\SVOASRV\HPCHEM1\BNA M\DATA\BM112918\  
 Data File : BM017798.D  
 Acq On : 29 Nov 2018 16:34  
 Operator : JU/SJ  
 Sample : AR1660-50PPM  
 Misc :  
 ALS Vial : 8 Sample Multiplier: 1

Instrument :  
 BNA\_M  
 LabSampleID :  
 AR1660-50PPM

Quant Method : Z:\SVOASRV\HPCHEM1\BNA\_M\METHODS\SOM-EPA-BM11918MA.M  
 Quant Title : SVOA CALIBRATION

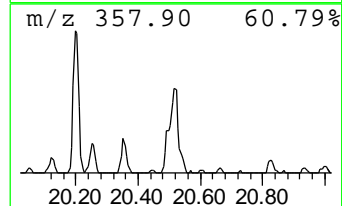
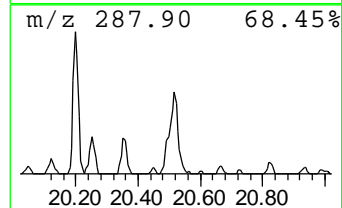
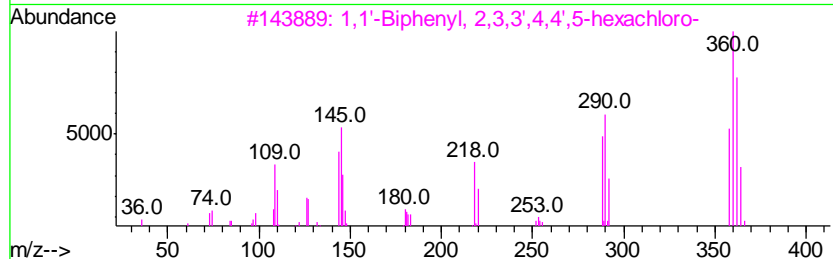
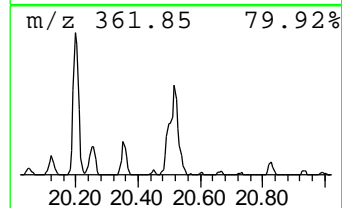
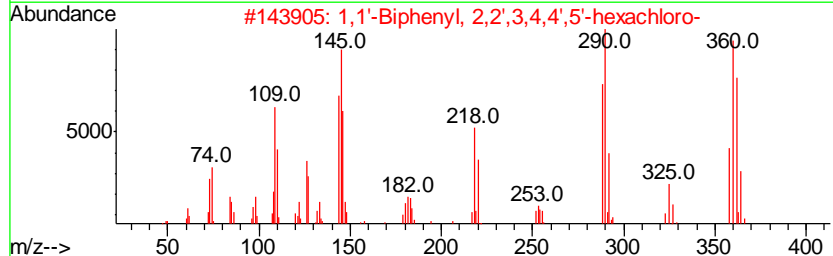
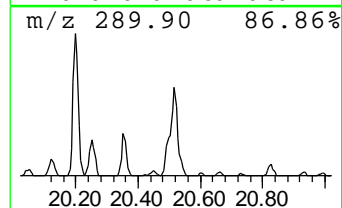
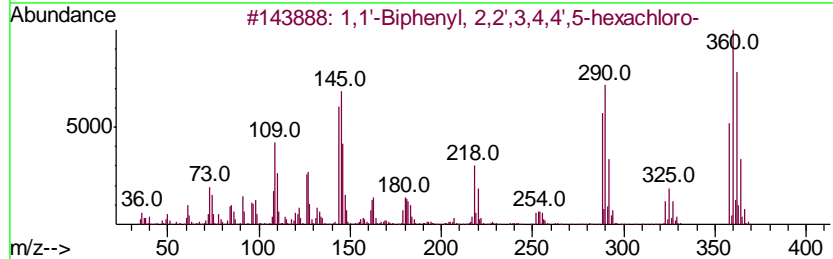
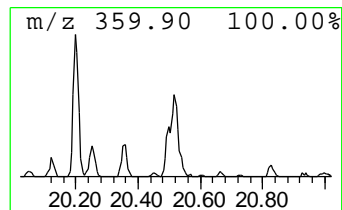
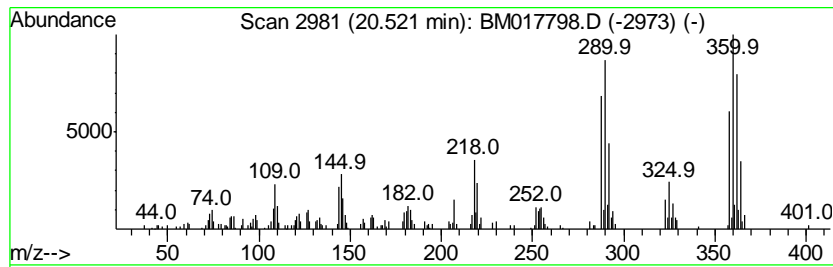
TIC Library : C:\DATABASE\NIST02.L  
 TIC Integration Parameters: LSCINT.P

\*\*\*\*\*  
 Peak Number 4 1,1'-Biphenyl, 2,2',3,4,4',... Concentration Rank 2

R.T.	EstConc	Area	Relative to ISTD	R.T.
20.52	2.75 ng/ul	530860	Chrysene-d12	21.20

Hit#	of	Tentative ID	MW	MolForm	CAS#	Qual
1	5	1,1'-Biphenyl, 2,2',3,4,4',5-hex...	358	C12H4Cl6	035694-06-5	99
2		1,1'-Biphenyl, 2,2',3,4,4',5'-he...	358	C12H4Cl6	035065-28-2	99
3		1,1'-Biphenyl, 2,3,3',4,4',5-hex...	358	C12H4Cl6	038380-08-4	99
4		1,1'-Biphenyl, 3,3',4,4',5,5'-he...	358	C12H4Cl6	032774-16-6	99
5		1,1'-Biphenyl, 2,2',3,4,4',6-Hex...	358	C12H4Cl6	056030-56-9	99



Data Path : Z:\SVOASRV\HPCHEM1\BNA\_M\DATA\BM112918\  
 Data File : BM017798.D  
 Acq On : 29 Nov 2018 16:34  
 Operator : JU/SJ  
 Sample : AR1660-50PPM  
 Misc :  
 ALS Vial : 8 Sample Multiplier: 1

Instrument :  
 BNA\_M  
 LabSampleId :  
 AR1660-50PPM

Quant Method : Z:\SVOASRV\HPCHEM1\BNA\_M\METHODS\SOM-EPA-BM111918MA.M  
 Quant Title : SVOA CALIBRATION

TIC Library : C:\DATABASE\NIST02.L  
 TIC Integration Parameters: LSCINT.P

TIC Top Hit name	RT	EstConc	Units	Response	--Internal Standard--			
					#	RT	Resp	Conc
(DEL) Alkane: Str...	3.10	4.9	ng/ul	346662	1	7.59	1406020	20.0
1,1'-Biphenyl, 2,...	19.92	2.3	ng/ul	447902	5	21.20	3862250	20.0
1,1'-Biphenyl, 2,...	20.20	2.6	ng/ul	495061	5	21.20	3862250	20.0
1,1'-Biphenyl, 2,...	20.52	2.8	ng/ul	530860	5	21.20	3862250	20.0