

Data Path : Z:\SVOASRV\HPCHEM1\BNA M\DATA\BM112918\
 Data File : BM017812.D
 Acq On : 30 Nov 2018 00:58
 Operator : JU/SJ
 Sample : J6027-19
 Misc :
 ALS Vial : 22 Sample Multiplier: 1

Instrument :
 BNA_M
 ClientSampleId :
 CB4R6

Integration Parameters: LSCINT.P

Integrator: RTE
 Smoothing : OFF
 Sampling : 1
 Start Thrs: 0.2
 Stop Thrs : 0

Filtering: 5
 Min Area: 0.1 % of largest Peak
 Max Peaks: 100
 Peak Location: TOP

If leading or trailing edge < 100 prefer < Baseline drop else tangent >
 Peak separation: 5

Method : Z:\SVOASRV\HPCHEM1\BNA_M\METHODS\SOM-EPA-BM111918MA.M
 Title : SVOA CALIBRATION

Signal : TIC

peak #	R.T. min	first scan	max scan	last scan	PK TY	peak height	corr. area	corr. % max.	% of total
1	3.016	3	5	8	rBV2	29135	30875	1.01%	0.171%
2	3.046	8	10	12	rVV3	14516	12348	0.40%	0.069%
3	3.069	12	14	16	rVV2	23191	19390	0.63%	0.108%
4	3.105	16	20	31	rVB	614007	631810	20.62%	3.507%
5	3.422	69	74	79	rVB2	18579	25553	0.83%	0.142%
6	3.469	79	82	85	rBV5	3630	4329	0.14%	0.024%
7	3.499	85	87	91	rVB5	3351	3836	0.13%	0.021%
8	3.757	128	131	132	rBV2	3500	4024	0.13%	0.022%
9	3.875	146	151	154	rBV4	6921	9931	0.32%	0.055%
10	4.110	188	191	194	rBV4	2748	4581	0.15%	0.025%
11	4.287	217	221	226	rVB3	6848	10089	0.33%	0.056%
12	5.140	362	366	372	rVB	30000	42822	1.40%	0.238%
13	5.269	382	388	398	rVB	17537	36964	1.21%	0.205%
14	5.363	400	404	408	rVB3	2466	4854	0.16%	0.027%
15	5.428	408	415	417	rBV3	3162	5846	0.19%	0.032%
16	5.628	444	449	456	rVB4	11930	19098	0.62%	0.106%
17	5.857	483	488	493	rBV7	3739	8748	0.29%	0.049%
18	6.093	524	528	533	rBV2	9874	14186	0.46%	0.079%
19	6.146	535	537	542	rBV4	2344	3066	0.10%	0.017%
20	6.345	566	571	574	rBV3	4580	7495	0.24%	0.042%
21	6.634	619	620	625	rVB3	4044	3361	0.11%	0.019%
22	6.687	625	629	631	rBV4	5030	8444	0.28%	0.047%
23	6.716	631	634	638	rVV	20377	28183	0.92%	0.156%
24	6.745	638	639	644	rVB3	4263	4030	0.13%	0.022%
25	7.069	690	694	698	rBV5	4559	6195	0.20%	0.034%
26	7.145	703	707	709	rVV3	2841	3228	0.11%	0.018%
27	7.204	709	717	722	rVV5	7554	13180	0.43%	0.073%
28	7.587	775	782	802	rBV	870767	1499302	48.94%	8.323%
29	7.834	820	824	826	rBV3	2599	3615	0.12%	0.020%
30	7.910	833	837	840	rBV5	3678	5067	0.17%	0.028%
31	7.951	840	844	848	rVB4	3368	5834	0.19%	0.032%
32	8.128	871	874	876	rVB2	3549	3402	0.11%	0.019%
33	9.134	1040	1045	1049	rBV2	14116	18976	0.62%	0.105%
34	10.357	1245	1253	1272	rBV	1224101	2231339	72.83%	12.386%

Data Path : Z:\SVOASRV\HPCHEM1\BNA M\DATA\BM112918\
 Data File : BM017812.D
 Acq On : 30 Nov 2018 00:58
 Operator : JU/SJ
 Sample : J6027-19
 Misc :
 ALS Vial : 22 Sample Multiplier: 1

Instrument :
 BNA_M
 ClientSampleId :
 CB4R6

Integration Parameters: LSCINT.P

Integrator: RTE
 Smoothing : OFF
 Sampling : 1
 Start Thrs: 0.2
 Stop Thrs : 0

Filtering: 5
 Min Area: 0.1 % of largest Peak
 Max Peaks: 100
 Peak Location: TOP

If leading or trailing edge < 100 prefer < Baseline drop else tangent >
 Peak separation: 5

Method : Z:\SVOASRV\HPCHEM1\BNA_M\METHODS\SOM-EPA-BM111918MA.M
 Title : SVOA CALIBRATION

35	11.622	1463	1468	1474	rVB	9925	12364	0.40%	0.069%
36	13.645	1808	1812	1816	rVB4	4727	5766	0.19%	0.032%
37	13.957	1860	1865	1870	rBV	5358	6786	0.22%	0.038%
38	14.233	1905	1912	1931	rBV2	1859482	2966150	96.81%	16.465%
39	14.663	1980	1985	1987	rBV2	2971	3111	0.10%	0.017%
40	15.263	2081	2087	2089	rVV2	3810	7203	0.24%	0.040%
41	15.310	2089	2095	2103	rVB3	7179	16553	0.54%	0.092%
42	15.457	2118	2120	2123	rBV3	2974	3350	0.11%	0.019%
43	15.498	2126	2127	2135	rVB3	2195	3393	0.11%	0.019%
44	15.604	2141	2145	2146	rBV2	2742	3278	0.11%	0.018%
45	15.757	2166	2171	2178	rBV5	12191	21625	0.71%	0.120%
46	15.957	2200	2205	2208	rBV4	6617	9577	0.31%	0.053%
47	15.998	2208	2212	2215	rVV4	13054	18734	0.61%	0.104%
48	16.027	2215	2217	2220	rVB3	3852	4365	0.14%	0.024%
49	16.180	2241	2243	2244	rBV	5371	3361	0.11%	0.019%
50	16.321	2263	2267	2270	rVB5	2784	4105	0.13%	0.023%
51	16.457	2285	2290	2292	rBV4	3520	5886	0.19%	0.033%
52	16.527	2299	2302	2306	rBV5	5103	7473	0.24%	0.041%
53	16.568	2306	2309	2310	rVV2	4702	3568	0.12%	0.020%
54	16.598	2310	2314	2320	rVB2	19098	27816	0.91%	0.154%
55	16.762	2340	2342	2343	rBV	6271	4684	0.15%	0.026%
56	16.992	2374	2381	2386	rBV	2041750	3063733	100.00%	17.007%
57	17.033	2386	2388	2397	rVB	151228	218039	7.12%	1.210%
58	17.139	2403	2406	2411	rVB3	9763	15322	0.50%	0.085%
59	17.357	2441	2443	2445	rVB3	5983	4227	0.14%	0.023%
60	17.380	2445	2447	2450	rBV3	3213	4015	0.13%	0.022%
61	17.439	2453	2457	2459	rBV5	3498	5346	0.17%	0.030%
62	17.498	2465	2467	2469	rBV3	6677	5952	0.19%	0.033%
63	17.580	2478	2481	2482	rBV3	4522	3520	0.11%	0.020%
64	17.645	2491	2492	2494	rBV2	5146	3816	0.12%	0.021%
65	17.733	2502	2507	2510	rBV6	4484	8112	0.26%	0.045%
66	17.874	2527	2531	2535	rVV3	19733	39285	1.28%	0.218%
67	17.927	2536	2540	2546	rVB3	29564	55528	1.81%	0.308%
68	18.062	2558	2563	2568	rBV5	39418	68420	2.23%	0.380%
69	18.192	2582	2585	2588	rBV4	5832	8021	0.26%	0.045%
70	18.327	2606	2608	2613	rBV6	5504	7452	0.24%	0.041%
71	18.380	2614	2617	2622	rVV3	13617	21536	0.70%	0.120%

Data Path : Z:\SVOASRV\HPCHEM1\BNA M\DATA\BM112918\
 Data File : BM017812.D
 Acq On : 30 Nov 2018 00:58
 Operator : JU/SJ
 Sample : J6027-19
 Misc :
 ALS Vial : 22 Sample Multiplier: 1

Instrument :
 BNA_M
 ClientSampleId :
 CB4R6

Integration Parameters: LSCINT.P

Integrator: RTE
 Smoothing : OFF Filtering: 5
 Sampling : 1 Min Area: 0.1 % of largest Peak
 Start Thrs: 0.2 Max Peaks: 100
 Stop Thrs : 0 Peak Location: TOP

If leading or trailing edge < 100 prefer < Baseline drop else tangent >
 Peak separation: 5

Method : Z:\SVOASRV\HPCHEM1\BNA_M\METHODS\SOM-EPA-BM111918MA.M
 Title : SVOA CALIBRATION

72	18.498	2634	2637	2641	rBV5	6458	12135	0.40%	0.067%
73	18.592	2651	2653	2655	rBV3	6758	5229	0.17%	0.029%
74	18.674	2665	2667	2671	rVB4	10748	11003	0.36%	0.061%
75	18.798	2683	2688	2691	rBV4	25290	42564	1.39%	0.236%
76	18.856	2696	2698	2701	rVB4	13917	12467	0.41%	0.069%
77	19.062	2727	2733	2740	rBV	374322	590172	19.26%	3.276%
78	19.421	2786	2794	2804	rBV2	252862	467103	15.25%	2.593%
79	19.503	2806	2808	2812	rVB4	15633	19928	0.65%	0.111%
80	19.621	2824	2828	2830	rBV4	18626	30405	0.99%	0.169%
81	19.774	2848	2854	2858	rBV7	34013	74147	2.42%	0.412%
82	19.921	2876	2879	2889	rVB5	61489	115500	3.77%	0.641%
83	21.192	3089	3095	3100	rBV	2007523	2883831	94.13%	16.008%
84	23.374	3461	3466	3475	rVB	1280435	2344445	76.52%	13.014%

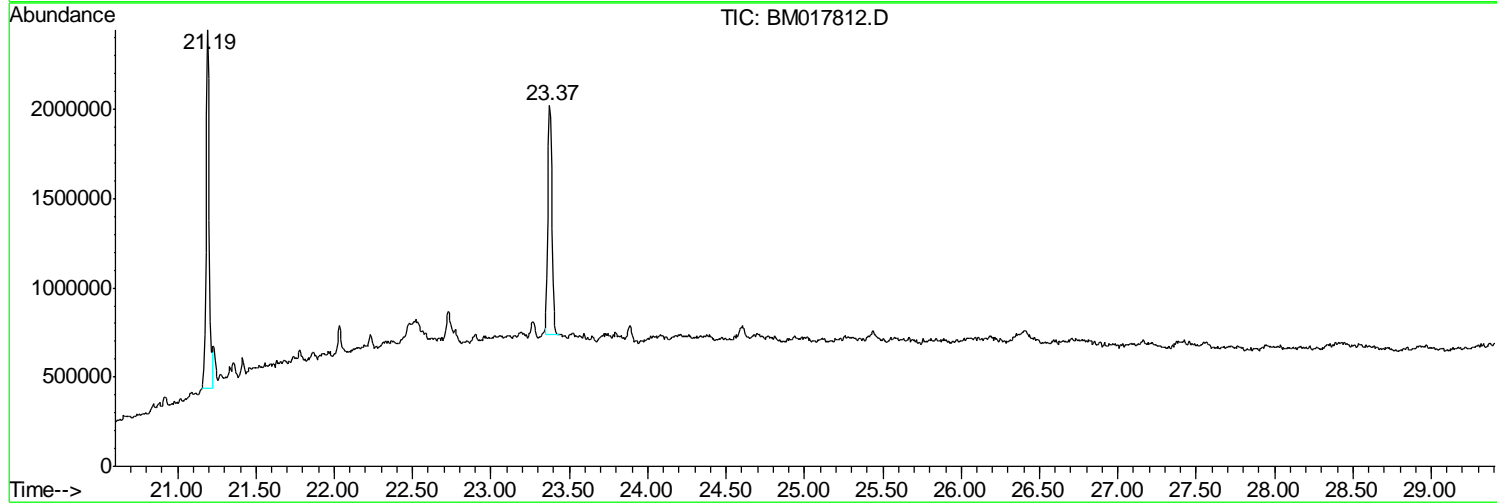
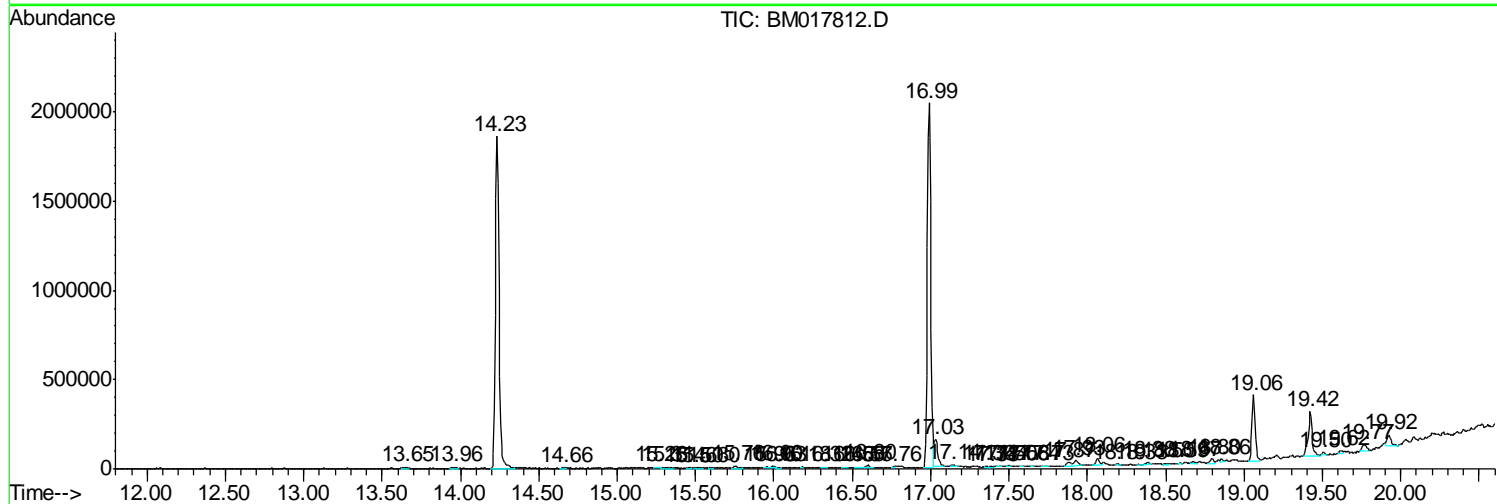
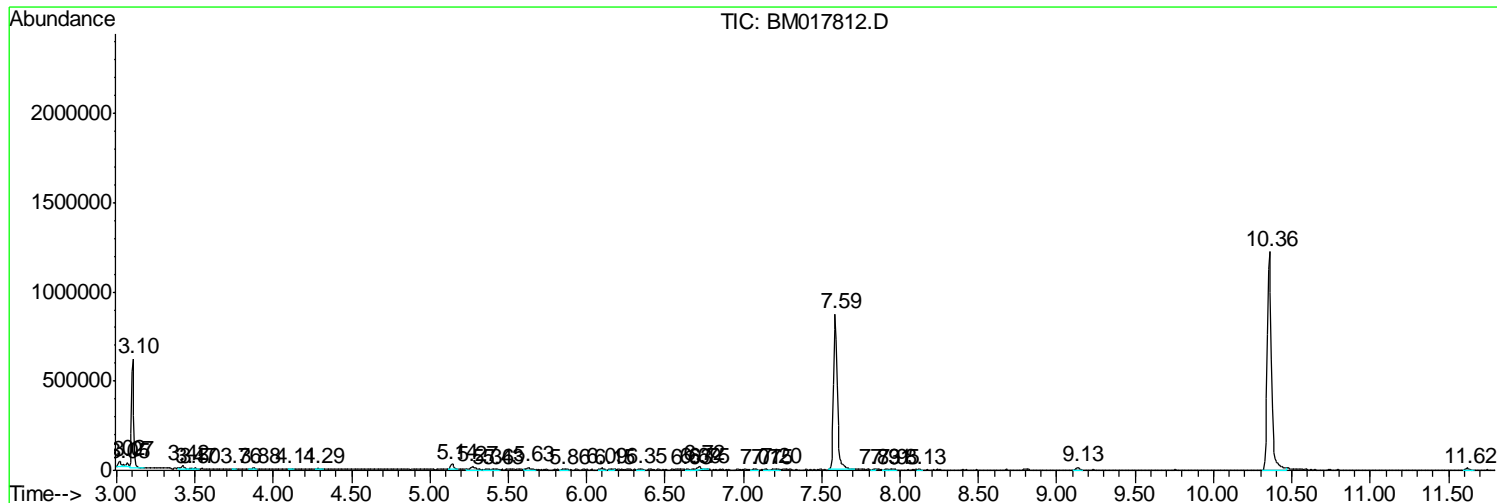
Sum of corrected areas: 18014402

Data Path : Z:\SVOASRV\HPCHEM1\BNA M\DATA\BM112918\
 Data File : BM017812.D
 Acq On : 30 Nov 2018 00:58
 Operator : JU/SJ
 Sample : J6027-19
 Misc :
 ALS Vial : 22 Sample Multiplier: 1

Instrument :
 BNA_M
 ClientSampled :
 CB4R6

Quant Method : Z:\SVOASRV\HPCHEM1\BNA_M\METHODS\SOM-EPA-BM11918MA.M
 Quant Title : SVOA CALIBRATION

TIC Library : C:\DATABASE\NIST02.L
 TIC Integration Parameters: LSCINT.P



Data Path : Z:\SVOASRV\HPCHEM1\BNA M\DATA\BM112918\
 Data File : BM017812.D
 Acq On : 30 Nov 2018 00:58
 Operator : JU/SJ
 Sample : J6027-19
 Misc :
 ALS Vial : 22 Sample Multiplier: 1

Instrument :
 BNA_M
 ClientSampleID :
 CB4R6

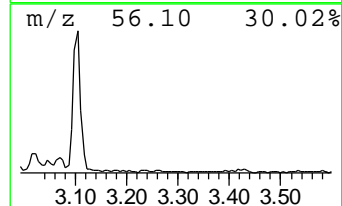
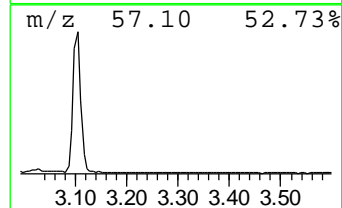
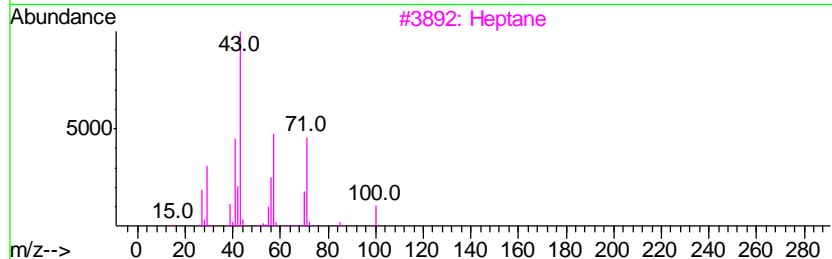
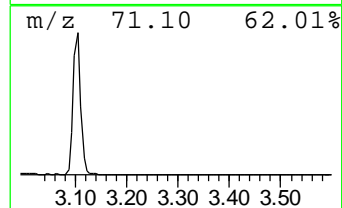
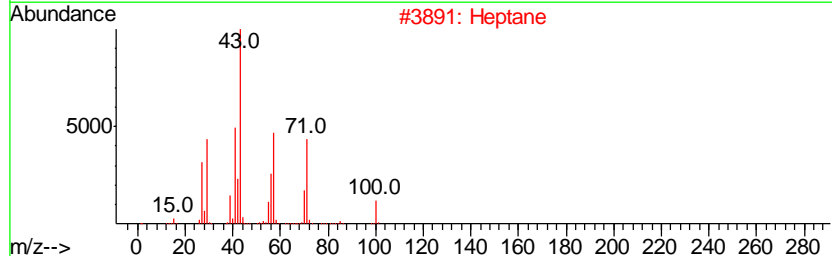
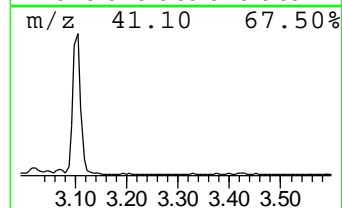
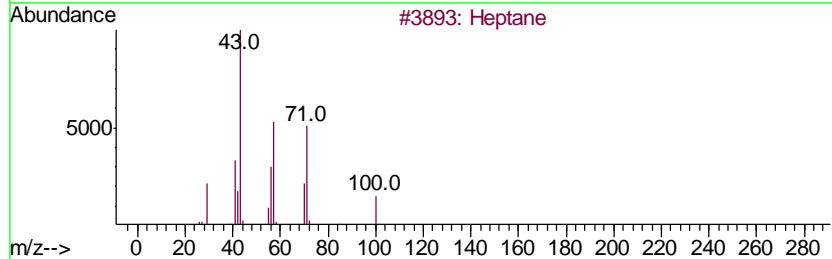
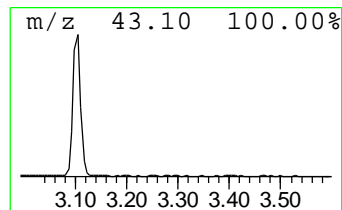
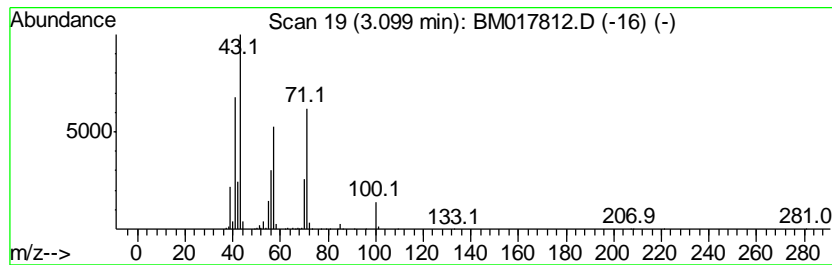
Quant Method : Z:\SVOASRV\HPCHEM1\BNA_M\METHODS\SOM-EPA-BM11918MA.M
 Quant Title : SVOA CALIBRATION

TIC Library : C:\DATABASE\NIST02.L
 TIC Integration Parameters: LSCINT.P

 Peak Number 1 (DEL) Alkane: Straight-Chai... Concentration Rank 1

R.T.	EstConc	Area	Relative to ISTD	R.T.
3.10	8.43 ng/ul	631810	1,4-Dichlorobenzene-d4	7.59

Hit#	of	Tentative ID	MW	MolForm	CAS#	Qual
1	5	Heptane	100	C7H16	000142-82-5	91
2		Heptane	100	C7H16	000142-82-5	91
3		Heptane	100	C7H16	000142-82-5	90
4		Heptane	100	C7H16	000142-82-5	86
5		Decane, 4-methyl-	156	C11H24	002847-72-5	45



Data Path : Z:\SVOASRV\HPCHEM1\BNA_M\DATA\BM112918\
Data File : BM017812.D
Acq On : 30 Nov 2018 00:58
Operator : JU/SJ
Sample : J6027-19
Misc :
ALS Vial : 22 Sample Multiplier: 1

Instrument :
BNA_M
ClientSampleId :
CB4R6

Quant Method : Z:\SVOASRV\HPCHEM1\BNA_M\METHODS\SOM-EPA-BM111918MA.M
Quant Title : SVOA CALIBRATION

TIC Library : C:\DATABASE\NIST02.L
TIC Integration Parameters: LSCINT.P

TIC Top Hit name	RT	EstConc	Units	Response	--Internal Standard--			
					#	RT	Resp	Conc
(DEL) Alkane: Str...	3.10	8.4	ng/ul	631810	1	7.59	1499300	20.0