

Data Path : Z:\SVOASRV\HPCHEM1\BNA M\DATA\BM120718\  
 Data File : BM017979.D  
 Acq On : 06 Dec 2018 22:39  
 Operator : JU/SJ  
 Sample : J6137-14  
 Misc :  
 ALS Vial : 18 Sample Multiplier: 1

Instrument :  
 BNA\_M  
 ClientSampleId :  
 F9J16

Integration Parameters: LSCINT.P

Integrator: RTE  
 Smoothing : OFF  
 Sampling : 1  
 Start Thrs: 0.2  
 Stop Thrs : 0

Filtering: 5  
 Min Area: 0.1 % of largest Peak  
 Max Peaks: 100  
 Peak Location: TOP

If leading or trailing edge < 100 prefer < Baseline drop else tangent >  
 Peak separation: 5

Method : Z:\SVOASRV\HPCHEM1\BNA\_M\METHODS\SOM-EPA-BM111918MA.M  
 Title : SVOA CALIBRATION

Signal : TIC

peak #	R.T. min	first scan	max scan	last scan	PK TY	peak height	corr. area	corr. % max.	% of total
1	3.169	28	31	39	rVB4	11184	16329	0.17%	0.042%
2	3.763	126	132	135	rBV3	13074	20171	0.21%	0.052%
3	3.963	160	166	172	rBV6	15895	26669	0.27%	0.068%
4	5.987	505	510	516	rBV2	13523	19935	0.20%	0.051%
5	6.604	611	615	624	rBV5	12546	23360	0.24%	0.060%
6	6.751	634	640	649	rVV	101865	208585	2.13%	0.535%
7	6.910	660	667	676	rBV	459237	700242	7.14%	1.796%
8	7.098	693	699	711	rVB	506033	827464	8.44%	2.122%
9	7.557	770	777	785	rBV	465916	767872	7.83%	1.969%
10	7.628	785	789	798	rVB2	33326	56242	0.57%	0.144%
11	8.187	879	884	888	rBV6	7790	12906	0.13%	0.033%
12	8.269	892	898	909	rBV	304897	574875	5.86%	1.474%
13	8.387	914	918	924	rVB2	13668	23070	0.24%	0.059%
14	8.651	957	963	968	rBV	130269	221207	2.26%	0.567%
15	8.716	968	974	980	rVV	511403	886588	9.04%	2.274%
16	8.769	980	983	990	rVB	23371	43568	0.44%	0.112%
17	9.428	1088	1095	1110	rBV	439027	759850	7.75%	1.949%
18	9.963	1179	1186	1203	rBV	461727	1070949	10.92%	2.747%
19	10.269	1230	1238	1241	rBV5	37884	89143	0.91%	0.229%
20	10.328	1241	1248	1256	rVV	583000	1036520	10.57%	2.658%
21	10.387	1256	1258	1264	rVB5	9474	16148	0.16%	0.041%
22	11.151	1383	1388	1394	rBV4	20238	41684	0.42%	0.107%
23	11.657	1469	1474	1480	rBV2	24506	49500	0.50%	0.127%
24	11.939	1518	1522	1527	rBV4	8618	11930	0.12%	0.031%
25	12.539	1619	1624	1634	rVB3	16415	29854	0.30%	0.077%
26	12.804	1664	1669	1676	rBV3	26053	42813	0.44%	0.110%
27	13.139	1721	1726	1744	rVB	268688	567992	5.79%	1.457%
28	13.627	1803	1809	1824	rBV	986231	1461526	14.90%	3.749%
29	13.898	1848	1855	1865	rBV	1255540	1849934	18.86%	4.745%
30	14.116	1884	1892	1898	rBV5	9174	19653	0.20%	0.050%
31	14.204	1900	1907	1915	rBV2	760725	1147806	11.70%	2.944%
32	14.504	1950	1958	1961	rBV5	14009	29544	0.30%	0.076%
33	14.904	2021	2026	2032	rVB3	18254	30789	0.31%	0.079%
34	15.057	2048	2052	2057	rVB2	21215	29742	0.30%	0.076%

Data Path : Z:\SVOASRV\HPCHEM1\BNA\_M\DATA\BM120718\  
 Data File : BM017979.D  
 Acq On : 06 Dec 2018 22:39  
 Operator : JU/SJ  
 Sample : J6137-14  
 Misc :  
 ALS Vial : 18 Sample Multiplier: 1

Instrument :  
 BNA\_M  
 ClientSampleId :  
 F9J16

Integration Parameters: LSCINT.P  
 Integrator: RTE  
 Smoothing : OFF  
 Sampling : 1  
 Start Thrs: 0.2  
 Stop Thrs : 0

Filtering: 5  
 Min Area: 0.1 % of largest Peak  
 Max Peaks: 100  
 Peak Location: TOP

If leading or trailing edge < 100 prefer < Baseline drop else tangent >  
 Peak separation: 5

Method : Z:\SVOASRV\HPCHEM1\BNA\_M\METHODS\SOM-EPA-BM111918MA.M  
 Title : SVOA CALIBRATION

35	15.210	2071	2078	2092	rBV	1573031	2275056	23.19%	5.835%
36	15.357	2097	2103	2115	rVV2	323763	551864	5.63%	1.415%
37	15.451	2115	2119	2129	rVB8	18787	35101	0.36%	0.090%
38	15.598	2138	2144	2148	rBV4	8364	15005	0.15%	0.038%
39	16.516	2294	2300	2307	rBV2	26283	59285	0.60%	0.152%
40	16.968	2370	2377	2386	rBV	843676	1290328	13.15%	3.309%
41	17.068	2387	2394	2408	rVV	1572065	2382021	24.28%	6.109%
42	17.639	2486	2491	2498	rBV	323403	381608	3.89%	0.979%
43	17.886	2530	2533	2537	rVB6	9825	11611	0.12%	0.030%
44	17.951	2541	2544	2553	rBV	8132	16996	0.17%	0.044%
45	18.045	2556	2560	2563	rBV5	8807	15145	0.15%	0.039%
46	19.004	2718	2723	2729	rBV	17065	31247	0.32%	0.080%
47	19.174	2748	2752	2757	rBV5	9062	16225	0.17%	0.042%
48	19.257	2762	2766	2774	rBV5	14610	28947	0.30%	0.074%
49	19.333	2774	2779	2781	rBV	95622	122928	1.25%	0.315%
50	19.374	2781	2786	2795	rVB	1849948	2707796	27.60%	6.945%
51	20.327	2939	2948	2962	rBV	7676040	9809427	100.00%	25.160%
52	20.439	2963	2967	2972	rVB	50658	78664	0.80%	0.202%
53	21.174	3087	3092	3105	rBV	1191304	1654442	16.87%	4.243%
54	23.215	3432	3439	3451	rBV	1641236	3152044	32.13%	8.084%
55	23.356	3456	3463	3474	rVB2	807011	1638744	16.71%	4.203%

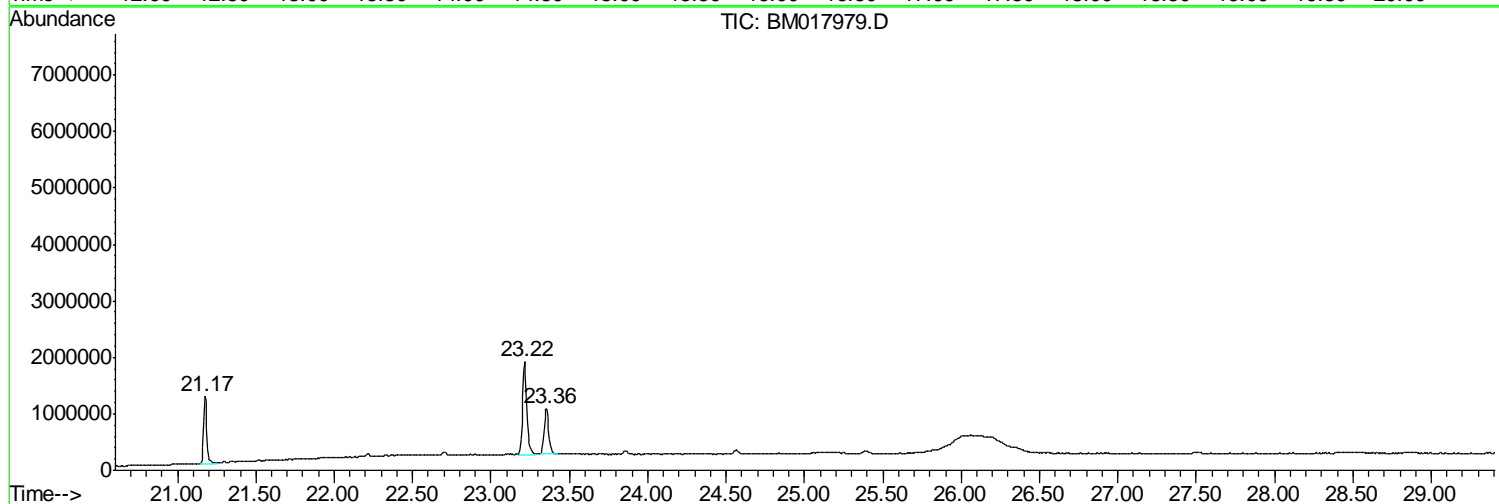
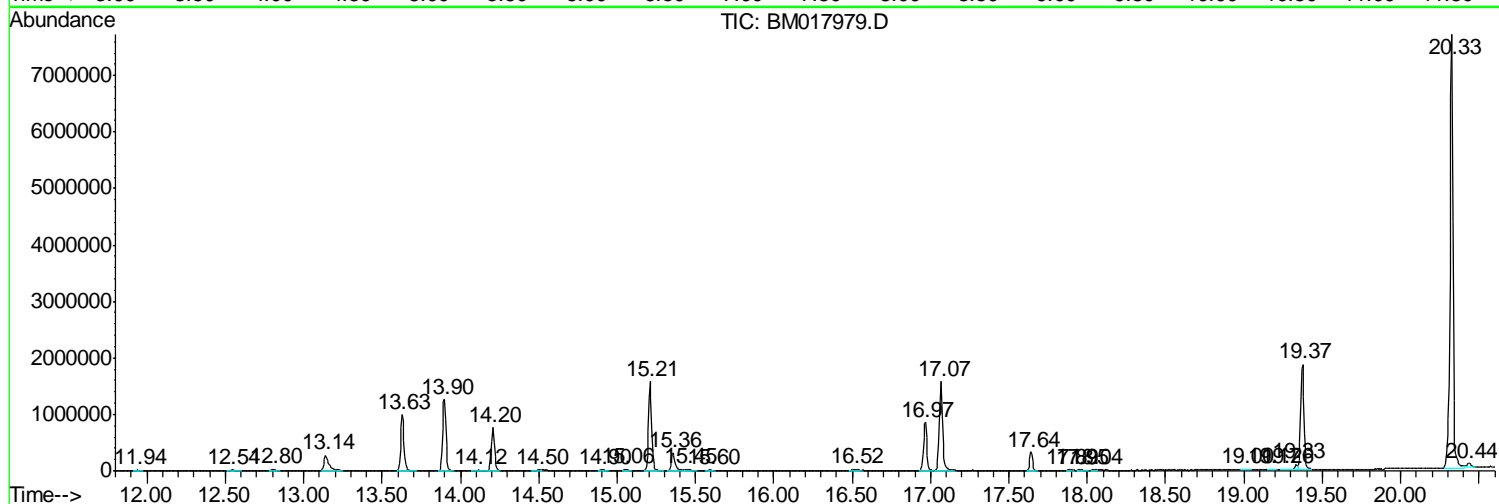
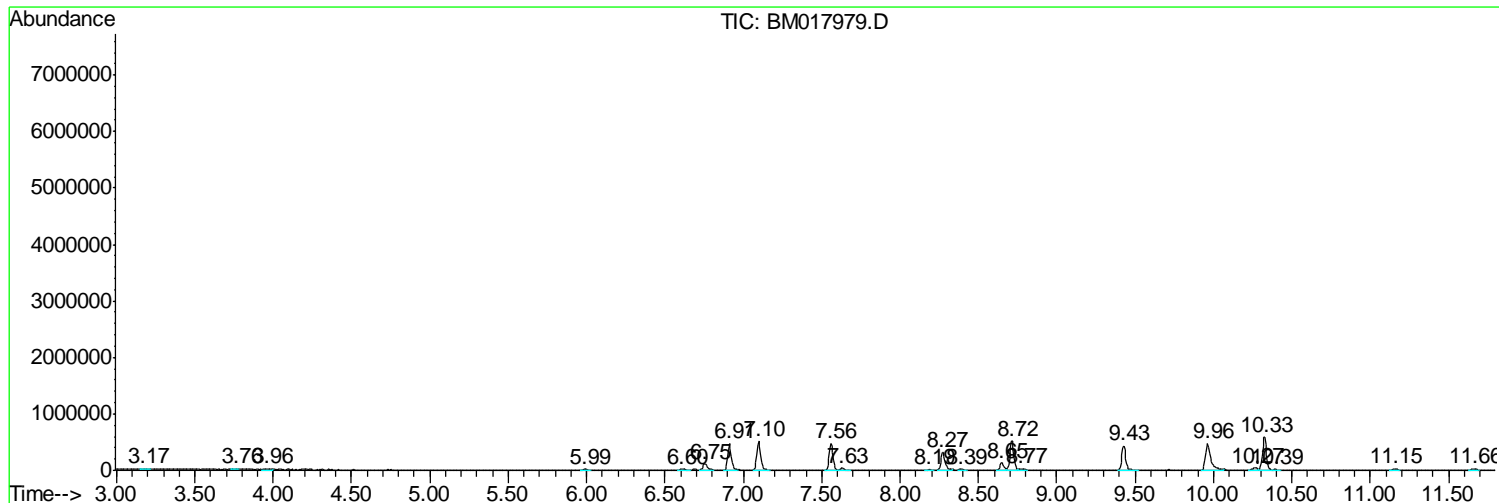
Sum of corrected areas: 38988944

Data Path : Z:\SVOASRV\HPCHEM1\BNA M\DATA\BM120718\  
 Data File : BM017979.D  
 Acq On : 06 Dec 2018 22:39  
 Operator : JU/SJ  
 Sample : J6137-14  
 Misc :  
 ALS Vial : 18 Sample Multiplier: 1

**Instrument :**  
 BNA\_M  
**ClientSampled :**  
 F9J16

Quant Method : Z:\SVOASRV\HPCHEM1\BNA\_M\METHODS\SOM-EPA-BM11918MA.M  
 Quant Title : SVOA CALIBRATION

TIC Library : C:\DATABASE\NIST02.L  
 TIC Integration Parameters: LSCINT.P



Data Path : Z:\SVOASRV\HPCHEM1\BNA M\DATA\BM120718\  
 Data File : BM017979.D  
 Acq On : 06 Dec 2018 22:39  
 Operator : JU/SJ  
 Sample : J6137-14  
 Misc :  
 ALS Vial : 18 Sample Multiplier: 1

Instrument :  
 BNA\_M  
 ClientSampled :  
 F9J16

Quant Method : Z:\SVOASRV\HPCHEM1\BNA\_M\METHODS\SOM-EPA-BM11918MA.M  
 Quant Title : SVOA CALIBRATION

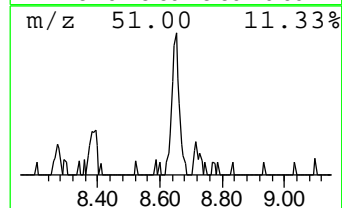
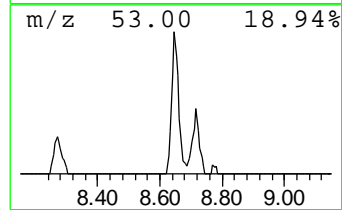
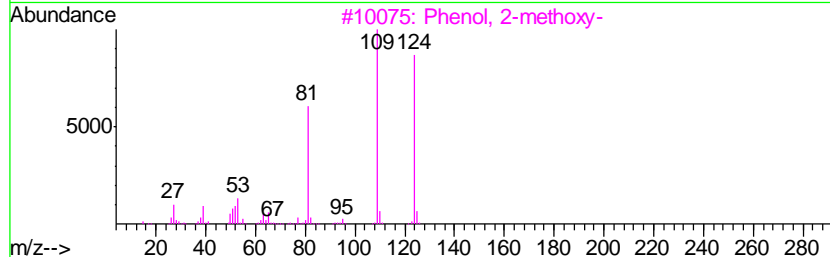
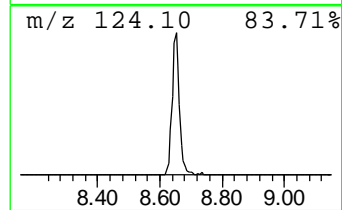
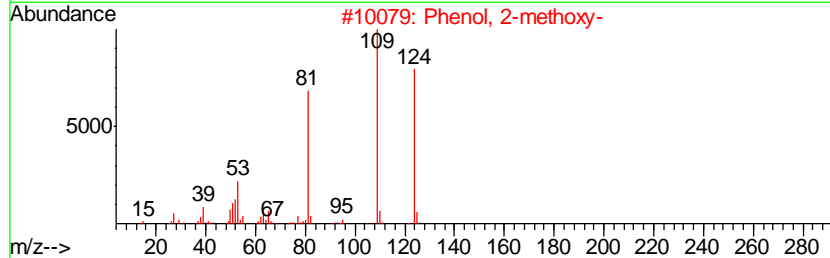
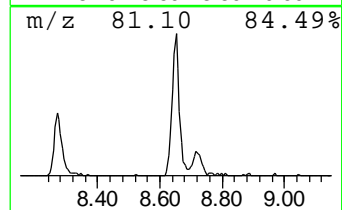
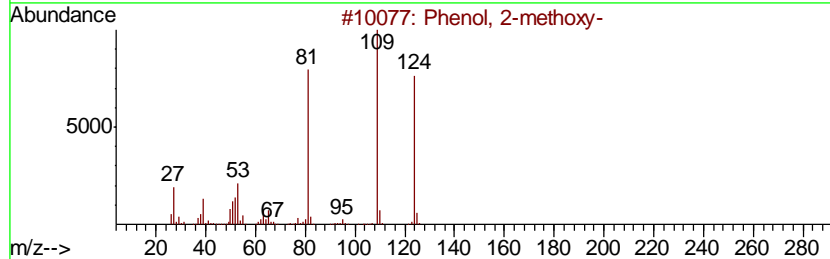
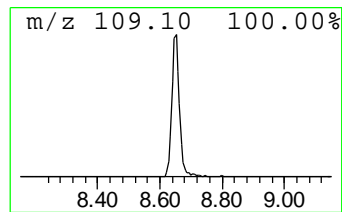
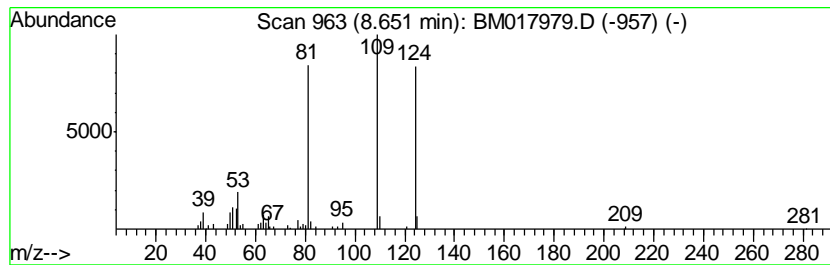
TIC Library : C:\DATABASE\NIST02.L  
 TIC Integration Parameters: LSCINT.P

\*\*\*\*\*  
 Peak Number 1 Phenol, 2-methoxy- Concentration Rank 4

R.T.	EstConc	Area	Relative to ISTD	R.T.
8.65	5.76 ng/ul	221207	1,4-Dichlorobenzene-d4	7.56

Hit#	of	Tentative ID	MW	MolForm	CAS#	Qual
1	5	Phenol, 2-methoxy-	124	C7H8O2	000090-05-1	97
2		Phenol, 2-methoxy-	124	C7H8O2	000090-05-1	97
3		Phenol, 2-methoxy-	124	C7H8O2	000090-05-1	94
4		Mequinol	124	C7H8O2	000150-76-5	91
5		2-Cyclopenten-1-one, 3,5,5-trime...	124	C8H12O	024156-95-4	72



Data Path : Z:\SVOASRV\HPCHEM1\BNA M\DATA\BM120718\  
 Data File : BM017979.D  
 Acq On : 06 Dec 2018 22:39  
 Operator : JU/SJ  
 Sample : J6137-14  
 Misc :  
 ALS Vial : 18 Sample Multiplier: 1

Instrument :  
 BNA\_M  
 ClientSampled :  
 F9J16

Quant Method : Z:\SVOASRV\HPCHEM1\BNA\_M\METHODS\SOM-EPA-BM11918MA.M  
 Quant Title : SVOA CALIBRATION

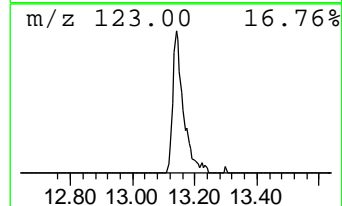
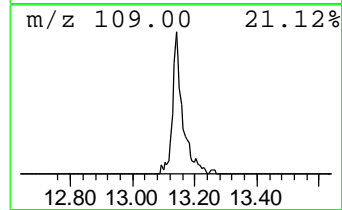
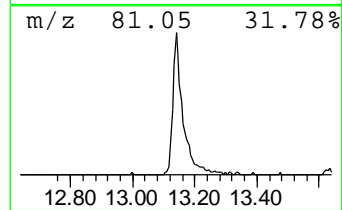
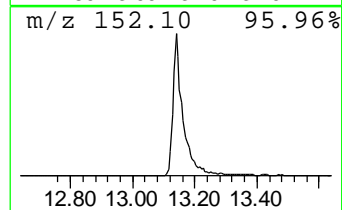
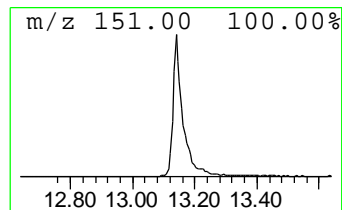
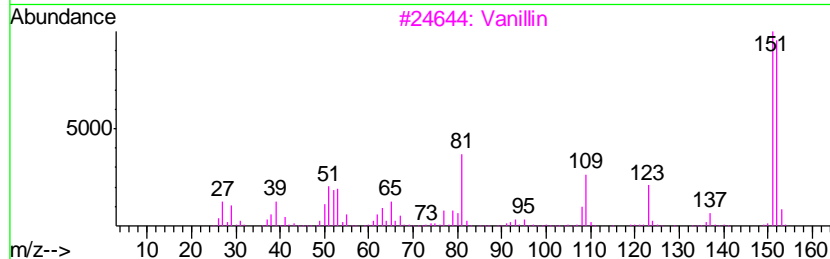
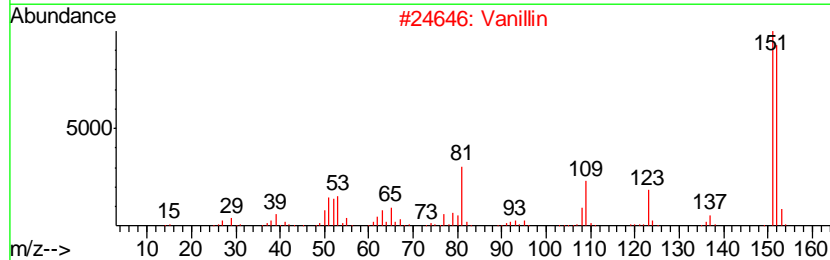
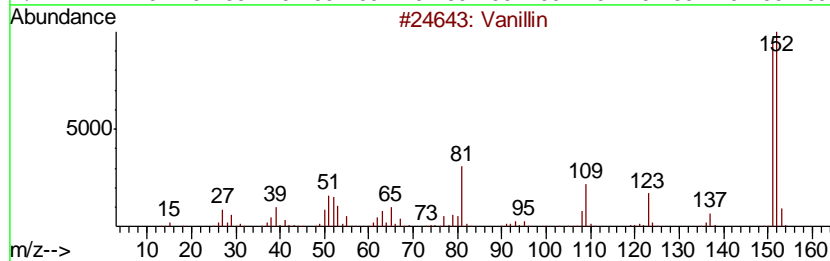
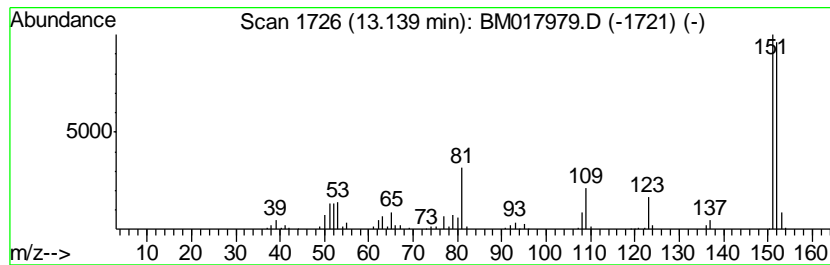
TIC Library : C:\DATABASE\NIST02.L  
 TIC Integration Parameters: LSCINT.P

\*\*\*\*\*  
 Peak Number 2 Vanillin Concentration Rank 2

R.T.	EstConc	Area	Relative to ISTD	R.T.
13.14	9.90 ng/ul	567992	Acenaphthene-d10	14.20

Hit#	of	Tentative ID	MW	MolForm	CAS#	Qual
1	5	Vanillin	152	C8H8O3	000121-33-5	97
2		Vanillin	152	C8H8O3	000121-33-5	97
3		Vanillin	152	C8H8O3	000121-33-5	97
4		Benzaldehyde, 3-hydroxy-4-methoxy-	152	C8H8O3	000621-59-0	96
5		Vanillin	152	C8H8O3	000121-33-5	95



Data Path : Z:\SVOASRV\HPCHEM1\BNA M\DATA\BM120718\  
 Data File : BM017979.D  
 Acq On : 06 Dec 2018 22:39  
 Operator : JU/SJ  
 Sample : J6137-14  
 Misc :  
 ALS Vial : 18 Sample Multiplier: 1

Instrument :  
 BNA\_M  
 ClientSampled :  
 F9J16

Quant Method : Z:\SVOASRV\HPCHEM1\BNA\_M\METHODS\SOM-EPA-BM11918MA.M  
 Quant Title : SVOA CALIBRATION

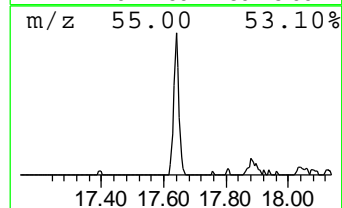
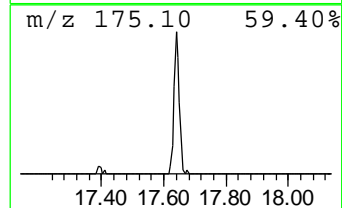
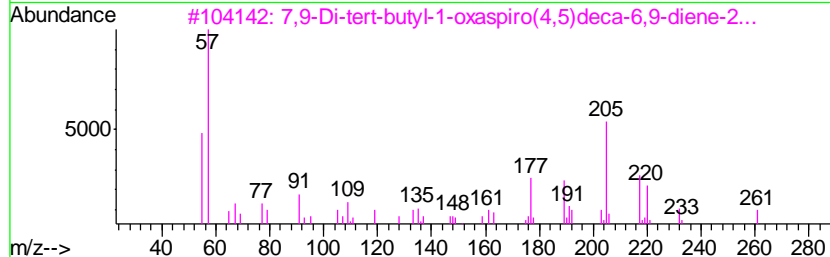
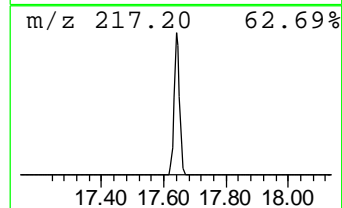
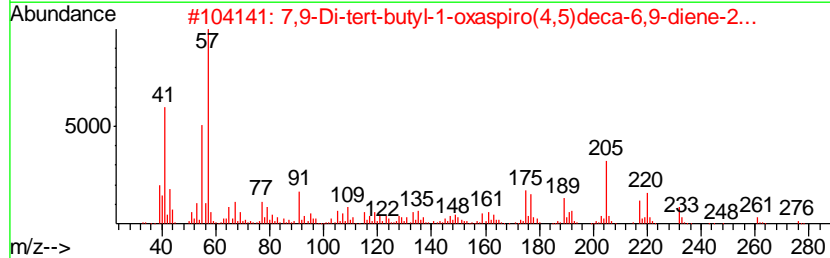
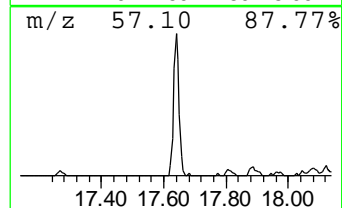
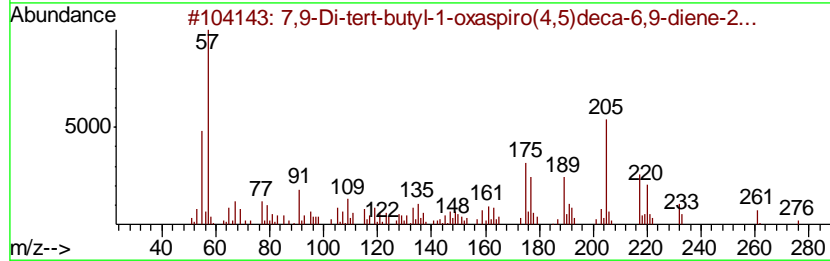
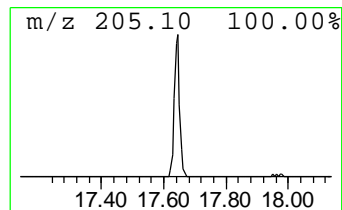
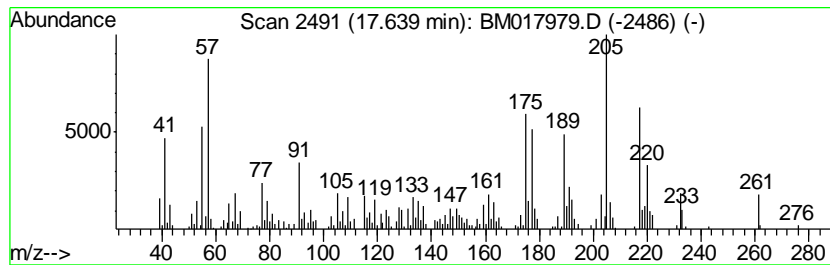
TIC Library : C:\DATABASE\NIST02.L  
 TIC Integration Parameters: LSCINT.P

\*\*\*\*\*  
 Peak Number 3 7,9-Di-tert-butyl-1-oxaspir... Concentration Rank 3

R.T.	EstConc	Area	Relative to ISTD	R.T.
17.64	5.91 ng/ul	381608	Phenanthrene-d10	16.97

Hit#	of	Tentative ID	MW	MolForm	CAS#	Qual
1	5	7,9-Di-tert-butyl-1-oxaspiro(4,5...	276	C17H24O3	082304-66-3	95
2		7,9-Di-tert-butyl-1-oxaspiro(4,5...	276	C17H24O3	082304-66-3	94
3		7,9-Di-tert-butyl-1-oxaspiro(4,5...	276	C17H24O3	082304-66-3	91
4		2,5-Cyclohexadien-1-one, 2,6-bis...	232	C16H24O	006738-27-8	83
5		Ethanone, 1-(5,6,7,8-tetrahydro-...	220	C14H20O2	071596-88-8	56



Data Path : Z:\SVOASRV\HPCHEM1\BNA M\DATA\BM120718\  
 Data File : BM017979.D  
 Acq On : 06 Dec 2018 22:39  
 Operator : JU/SJ  
 Sample : J6137-14  
 Misc :  
 ALS Vial : 18 Sample Multiplier: 1

Instrument :  
 BNA\_M  
 ClientSampled :  
 F9J16

Quant Method : Z:\SVOASRV\HPCHEM1\BNA\_M\METHODS\SOM-EPA-BM11918MA.M  
 Quant Title : SVOA CALIBRATION

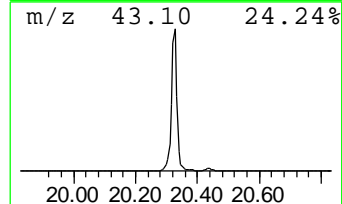
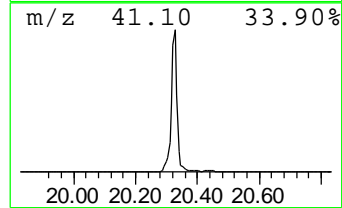
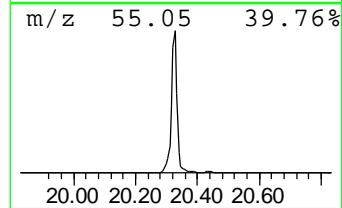
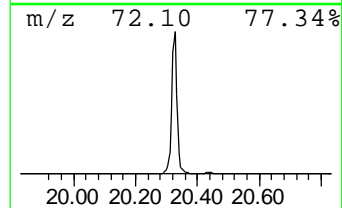
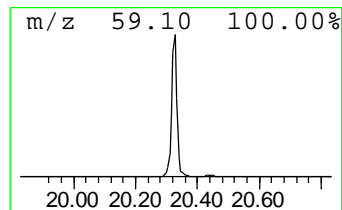
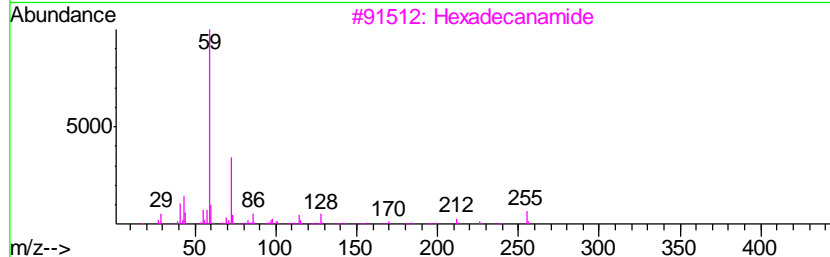
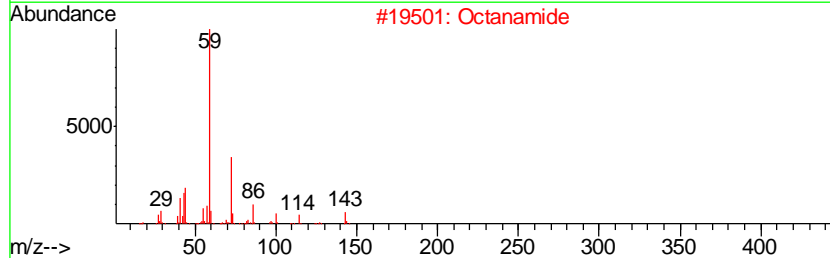
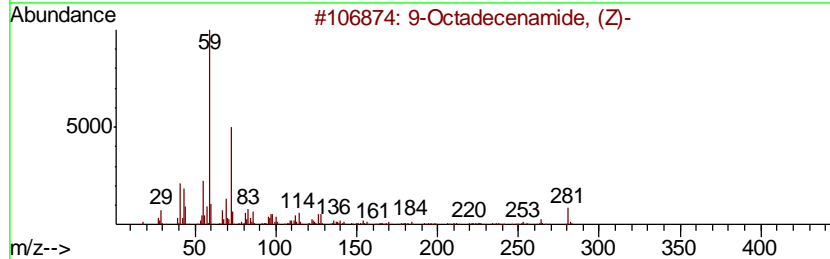
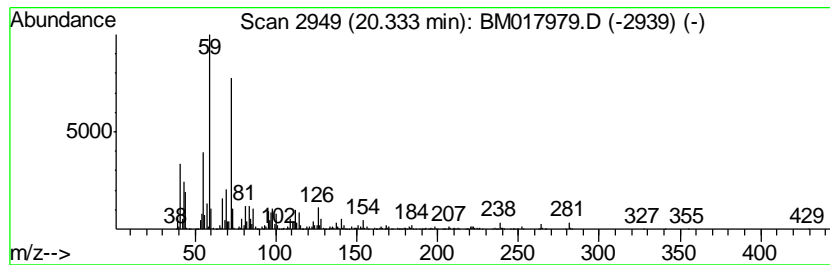
TIC Library : C:\DATABASE\NIST02.L  
 TIC Integration Parameters: LSCINT.P

\*\*\*\*\*  
 Peak Number 4 9-Octadecenamide, (Z)- Concentration Rank 1

R.T.	EstConc	Area	Relative to ISTD	R.T.
20.33	118.58 ng/ul	9809430	Chrysene-d12	21.17

Hit#	of	Tentative ID	MW	MolForm	CAS#	Qual
1	5	9-Octadecenamide, (Z)-	281	C18H35NO	000301-02-0	68
2		Octanamide	143	C8H17NO	000629-01-6	47
3		Hexadecanamide	255	C16H33NO	000629-54-9	40
4		Heptanamide, 4-ethyl-5-methyl-	171	C10H21NO	054789-40-1	40
5		9-Octadecenamide, (Z)-	281	C18H35NO	000301-02-0	37



Data Path : Z:\SVOASRV\HPCHEM1\BNA\_M\DATA\BM120718\  
Data File : BM017979.D  
Acq On : 06 Dec 2018 22:39  
Operator : JU/SJ  
Sample : J6137-14  
Misc :  
ALS Vial : 18 Sample Multiplier: 1

Instrument :  
BNA\_M  
ClientSampleId :  
F9J16

Quant Method : Z:\SVOASRV\HPCHEM1\BNA\_M\METHODS\SOM-EPA-BM111918MA.M  
Quant Title : SVOA CALIBRATION

TIC Library : C:\DATABASE\NIST02.L  
TIC Integration Parameters: LSCINT.P

TIC Top Hit name	RT	EstConc	Units	Response	--Internal Standard--			
					#	RT	Resp	Conc
Phenol, 2-methoxy-	8.65	5.8	ng/ul	221207	1	7.56	767872	20.0
Vanillin	13.14	9.9	ng/ul	567992	3	14.20	1147810	20.0
7,9-Di-tert-butyl...	17.64	5.9	ng/ul	381608	4	16.97	1290330	20.0
9-Octadecenamide,...	20.33	118.6	ng/ul	9809430	5	21.17	1654440	20.0