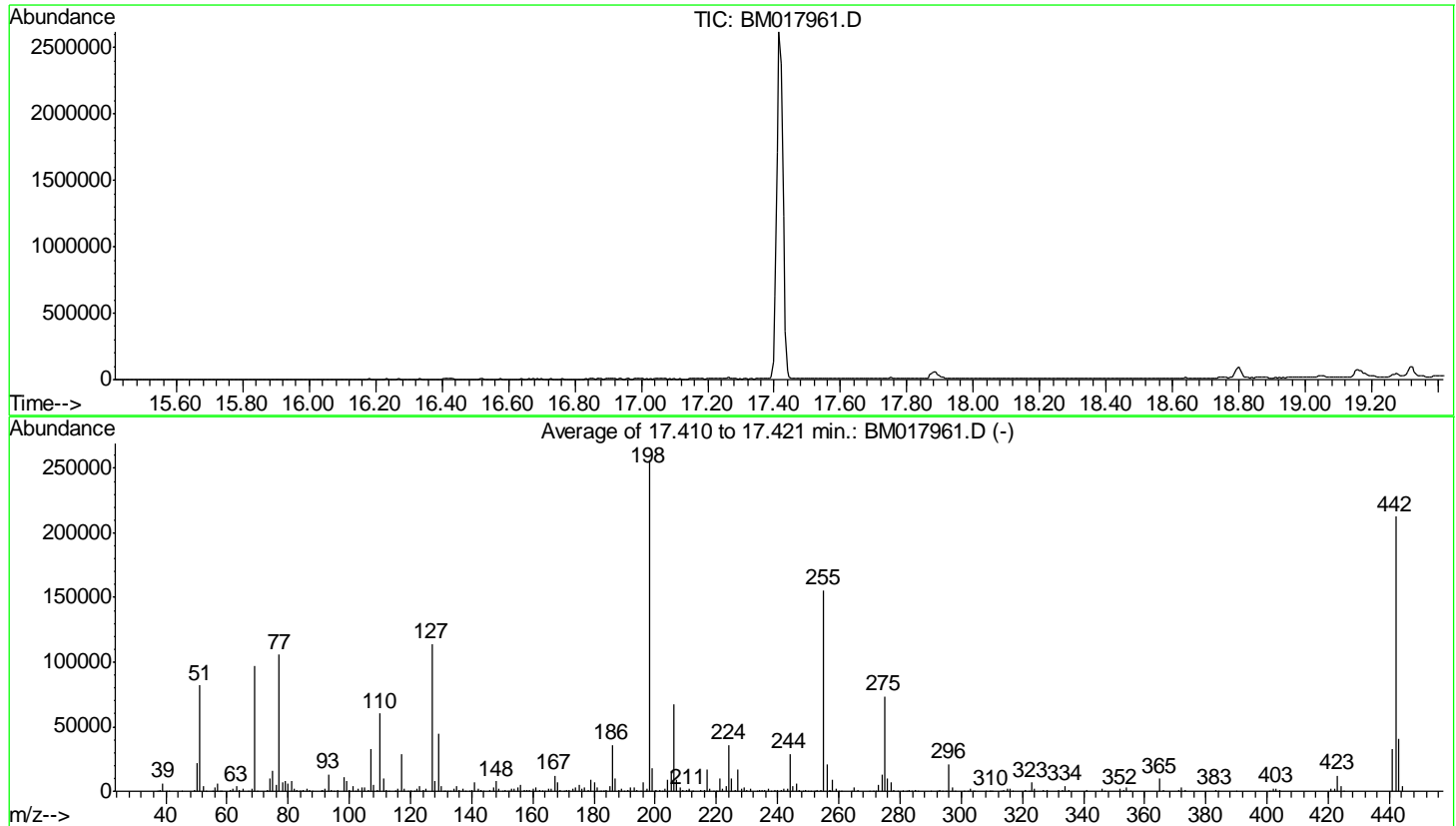


Data Path : Z:\svoasrv\HPCHEM1\BNA_M\Data\BM120718\
 Data File : BM017961.D
 Acq On : 06 Dec 2018 11:20
 Operator : JU/SJ
 Sample : DFTPP73
 Misc :
 ALS Vial : 1 Sample Multiplier: 1

Instrument :
 BNA_M
 ClientSampleId :
 DFTPP73

Integration File: LSCINT.P

Method : Z:\SVOASRV\HPCHEM1\BNA_M\METHODS\SOM-EPA-BM111918MA.M
 Title : SVOA CALIBRATION
 Last Update : Mon Dec 10 03:53:59 2018



AutoFind: Scans 2452, 2453, 2454; Background Corrected with Scan 2447

Target Mass	Rel. to Mass	Lower Limit%	Upper Limit%	Rel. Abn%	Raw Abn	Result Pass/Fail
51	198	10	80	31.9	81874	PASS
68	69	0.00	2	1.6	1586	PASS
69	198	0.00	100	37.7	96704	PASS
70	69	0.00	2	0.5	469	PASS
127	198	10	80	44.4	113960	PASS
197	198	0.00	2	0.7	1673	PASS
198	198	100	100	100.0	256426	PASS
199	198	5	9	7.0	17972	PASS
275	198	10	60	28.7	73493	PASS
365	198	1	100	3.9	9900	PASS
441	198	0.01	100	12.6	32216	PASS
442	198	50	100	82.9	212698	PASS
443	442	15	24	18.9	40242	PASS

m/z	Abundance
40.00	451.0
41.00	464.0
43.10	328.0
44.00	1745.0
55.10	487.0
73.00	797.0
82.90	519.0
97.10	422.0
147.00	314.0
193.00	300.0
207.10	2107.0
281.10	303.0

Instrument :
BNA_M
ClientSampleId :
DFTPP73

m/z	Abundance
37.00	354.0
38.00	1037.0
39.00	5728.0
40.00	623.0
41.00	391.0
44.00	1610.0
49.20	775.0
50.10	20240.0
51.10	73176.0
52.10	3029.0
52.90	395.0
54.90	546.0
56.00	2428.0
57.00	4728.0
57.90	318.0
60.90	1626.0
61.90	1299.0
63.10	3329.0
64.00	570.0
65.20	1511.0
69.00	85032.0
70.10	543.0
73.00	1594.0
74.00	9155.0
75.00	14374.0
76.10	4632.0
77.10	91408.0
78.00	5873.0
79.00	7601.0
80.00	4953.0
81.00	7227.0
82.00	1358.0
83.00	1534.0
85.00	966.0
86.00	1895.0
87.00	936.0
87.90	346.0
90.90	1564.0
92.00	1948.0
93.10	10857.0
94.00	733.0
96.20	397.0
98.00	9101.0
99.00	7149.0
99.80	502.0
101.00	3786.0
102.90	1677.0
104.00	2947.0
104.90	1970.0
106.10	790.0
107.00	27624.0
108.00	4395.0
109.20	975.0
110.00	50224.0
111.00	8042.0
112.00	865.0
115.20	348.0
115.90	1845.0
117.00	23552.0
118.00	1917.0
119.80	405.0
121.90	1703.0
123.00	3004.0
124.00	1509.0
125.00	1262.0
127.00	96104.0
128.00	6696.0
129.00	36560.0
130.00	3484.0
130.90	510.0
132.00	468.0
134.00	1885.0
135.00	2971.0
135.90	954.0
137.10	1727.0
139.00	387.0
140.00	740.0
141.00	5325.0
142.00	1638.0
142.90	838.0
144.10	308.0
146.00	920.0
147.00	2925.0
148.00	6020.0
148.90	1390.0
150.00	441.0
151.20	554.0
151.80	647.0
153.00	1728.0
153.90	937.0
155.10	2598.0

Instrument :
BNA_M
ClientSampleId :
DFTPP73

156.00	3911.0
157.10	1173.0
157.90	465.0
159.00	756.0
160.00	1647.0
161.00	2832.0
162.10	769.0
162.90	726.0
163.90	367.0
164.90	1827.0
165.90	1666.0
167.00	9804.0
168.00	5147.0
169.10	873.0
170.10	410.0
171.10	594.0
172.00	892.0
173.00	1364.0
174.00	1891.0
175.00	4435.0
176.10	1005.0
177.00	2487.0
178.00	710.0
179.00	7262.0
180.00	5371.0
181.00	1925.0
181.90	479.0
184.10	721.0
185.00	2806.0
186.00	27448.0
187.00	8179.0
187.90	1147.0
189.00	1694.0
189.90	340.0
191.00	1177.0
192.00	2376.0
193.00	2313.0
194.10	580.0
196.00	5068.0
196.80	1013.0
197.10	1103.0
198.00	199424.0
199.00	14844.0
199.90	1031.0
201.50	1131.0
203.00	1325.0
204.10	7308.0
205.00	12730.0
206.10	53040.0
207.10	8271.0
208.00	2451.0
209.10	848.0
210.20	1131.0
210.90	1967.0
212.10	419.0
214.80	520.0
216.00	1195.0
217.00	11806.0
218.00	2544.0
220.20	400.0
221.00	7479.0
221.90	1392.0
223.00	3092.0
224.10	26112.0
225.10	6848.0
226.00	1099.0
227.00	12392.0
228.00	1785.0
229.00	2831.0
230.00	574.0
231.00	1227.0
233.90	638.0
235.00	975.0
235.90	777.0
237.00	1660.0
238.90	554.0
239.90	423.0
241.10	640.0
242.00	1282.0
243.10	1449.0
244.00	20976.0
245.10	3198.0
246.00	4029.0
246.90	929.0
249.00	565.0
252.10	407.0
253.10	556.0
255.00	115552.0
256.00	14804.0
256.90	1327.0
258.00	6357.0
258.90	1342.0
260.10	355.0
265.00	2274.0
266.00	643.0

Instrument :
BNA_M
ClientSampleId :
DFTPP73

273.00	3179.0
274.00	8305.0
275.00	52448.0
276.00	8176.0
277.00	4434.0
278.10	946.0
280.90	594.0
283.00	611.0
285.00	712.0
291.90	352.0
293.00	1103.0
294.10	414.0
296.00	13993.0
297.00	1878.0
303.00	1801.0
303.90	380.0
308.10	304.0
309.10	325.0
309.90	342.0
314.00	866.0
315.10	1584.0
316.00	904.0
317.00	316.0
321.00	598.0
322.10	320.0
323.10	4529.0
324.10	1359.0
327.00	950.0
328.00	760.0
331.90	453.0
332.90	464.0
334.10	2975.0
335.00	798.0
341.00	819.0
346.00	1125.0
352.10	1100.0
353.10	875.0
354.00	1614.0
355.00	463.0
365.00	6176.0
365.90	786.0
371.00	552.0
372.10	1874.0
373.10	626.0
383.00	455.0
402.10	1202.0
403.10	1591.0
404.10	475.0
421.00	980.0
422.00	1052.0
423.10	7108.0
424.00	2800.0
425.10	520.0
441.10	19624.0
442.10	121232.0
443.10	23280.0
444.10	2088.0

Instrument :
BNA_M
ClientSampleId :
DFTPP73

m/z	Abundance
37.10	504.0
38.00	1371.0
39.10	7965.0
40.00	616.0
41.00	411.0
44.00	1442.0
45.00	367.0
49.20	960.0
50.10	24920.0
51.00	97640.0
52.10	4865.0
55.00	754.0
56.00	3028.0
57.00	6480.0
58.10	324.0
61.00	954.0
62.00	2005.0
63.10	4229.0
64.10	733.0
65.00	1587.0
66.90	334.0
68.20	2730.0
69.00	116304.0
69.90	353.0
73.00	1485.0
74.00	11225.0
75.00	17824.0
76.10	5388.0
77.10	124320.0
78.10	8580.0
79.00	10020.0
80.00	5950.0
81.00	9233.0
81.90	2488.0
83.00	1895.0
84.00	502.0
85.00	1683.0
86.00	2931.0
87.00	1289.0
87.90	514.0
91.10	1921.0
91.90	2173.0
93.00	16456.0
94.10	1073.0
95.00	374.0
96.00	1371.0
97.00	472.0
98.00	12724.0
99.00	9225.0
100.00	976.0
101.00	5218.0
102.10	322.0
102.90	1777.0
104.00	3424.0
105.00	3386.0
106.10	970.0
107.00	38312.0
108.00	6258.0
109.10	1302.0
110.00	71504.0
111.00	11532.0
112.10	1577.0
113.00	710.0
115.00	335.0
116.00	2135.0
117.00	34264.0
118.00	2635.0
119.10	356.0
119.90	514.0
122.00	2506.0
123.00	4128.0
124.00	1713.0
125.00	1776.0
127.00	134272.0
128.00	9523.0
129.00	52960.0
130.00	4699.0
131.10	878.0
133.10	372.0
134.00	1711.0
134.90	4285.0
136.00	2457.0
137.10	2227.0
139.00	413.0
140.00	845.0
141.00	7786.0
141.90	2271.0
143.10	1475.0
143.90	396.0
146.10	1149.0
147.00	3485.0

Instrument :
BNA_M
ClientSampleId :
DFTPP73

148.00	9016.0
149.00	1797.0
150.00	441.0
151.00	1079.0
151.70	528.0
152.10	384.0
152.90	2498.0
154.00	2240.0
155.00	3729.0
156.00	6049.0
157.10	1563.0
157.90	1706.0
159.00	906.0
159.90	2056.0
161.00	2728.0
162.00	1022.0
164.00	526.0
165.00	2789.0
166.00	2352.0
167.00	14363.0
168.00	7955.0
169.00	1503.0
170.10	300.0
171.00	734.0
172.00	1318.0
173.00	1869.0
174.00	3375.0
175.00	6100.0
176.00	1364.0
176.90	2852.0
178.00	738.0
179.00	11479.0
180.00	7702.0
181.00	3797.0
182.00	447.0
182.90	300.0
184.00	1022.0
185.00	4710.0
186.00	40960.0
187.00	10788.0
188.00	1153.0
189.00	2987.0
189.90	703.0
190.90	1121.0
192.00	3836.0
193.10	3907.0
193.90	1041.0
195.10	387.0
196.00	9460.0
197.20	1890.0
198.00	301376.0
199.00	20720.0
200.10	1473.0
201.60	1112.0
202.20	352.0
203.00	1906.0
204.00	10506.0
205.00	18640.0
206.10	80432.0
207.10	13463.0
208.00	3055.0
209.00	1558.0
210.00	1289.0
211.10	2967.0
212.20	429.0
214.90	843.0
216.00	1379.0
217.00	20272.0
218.00	2679.0
219.00	350.0
219.90	367.0
221.00	11114.0
221.80	3416.0
223.00	4420.0
224.00	43032.0
225.00	12249.0
226.10	1143.0
227.00	20744.0
228.00	2918.0
229.00	3842.0
230.00	596.0
231.00	2110.0
234.00	1045.0
235.00	1519.0
235.90	1155.0
236.90	2105.0
237.90	357.0
238.90	766.0
239.90	694.0
241.00	1197.0
242.10	2116.0
243.00	2454.0
244.10	34480.0
245.00	4752.0
246.00	7538.0

Instrument :
BNA_M
ClientSampleId :
DFTPP73

247.10	1484.0
248.10	425.0
248.90	1267.0
249.90	381.0
250.90	300.0
252.10	355.0
253.00	623.0
254.10	1586.0
255.00	179008.0
256.00	24640.0
257.10	2260.0
258.00	10863.0
258.90	2198.0
264.00	467.0
265.00	4003.0
266.10	615.0
271.10	548.0
272.00	417.0
273.00	5890.0
274.00	15431.0
275.00	87560.0
276.00	12288.0
277.00	7617.0
278.00	1264.0
279.10	325.0
281.10	408.0
282.10	344.0
283.00	918.0
283.90	407.0
285.00	1394.0
286.00	415.0
292.00	485.0
293.00	1769.0
294.00	560.0
295.10	644.0
296.00	25080.0
297.00	2794.0
298.00	317.0
302.00	554.0
303.10	3240.0
304.10	509.0
308.10	306.0
310.10	356.0
312.90	300.0
314.00	1336.0
315.00	2770.0
316.10	2056.0
316.90	390.0
321.00	719.0
322.00	560.0
323.00	8476.0
324.00	1679.0
326.90	1427.0
328.00	658.0
332.00	472.0
333.00	593.0
334.00	5062.0
334.90	1646.0
341.00	662.0
346.00	1866.0
346.90	405.0
352.00	2224.0
353.10	1236.0
354.00	2932.0
355.10	483.0
365.00	11218.0
366.00	1961.0
371.00	698.0
372.10	3996.0
373.10	918.0
383.10	1554.0
384.00	518.0
389.90	440.0
401.00	308.0
402.00	1779.0
403.00	2159.0
404.00	943.0
421.00	2168.0
422.10	2129.0
423.10	13475.0
424.10	4737.0
425.10	336.0
441.10	34832.0
442.10	237760.0
443.10	46008.0
444.10	4368.0

Instrument :
BNA_M
ClientSampleId :
DFTPP73

m/z	Abundance
37.00	353.0
38.10	1170.0
39.00	5563.0
40.00	487.0
41.00	597.0
44.00	1670.0
49.10	745.0
50.10	20192.0
51.10	74808.0
52.10	3064.0
55.00	409.0
56.00	2518.0
57.00	5273.0
58.00	314.0
61.00	1124.0
62.00	1560.0
63.00	3361.0
64.00	542.0
65.10	1507.0
68.00	2030.0
69.00	88776.0
70.00	511.0
73.10	1603.0
74.00	9817.0
75.00	14954.0
76.10	5539.0
77.10	100816.0
78.10	6589.0
79.00	7434.0
80.00	5870.0
81.00	7589.0
82.00	2003.0
83.00	1750.0
83.70	363.0
85.00	1755.0
86.00	2260.0
87.00	928.0
87.90	381.0
91.00	1523.0
92.00	1693.0
93.00	12025.0
94.00	1066.0
96.00	659.0
97.00	495.0
98.10	9737.0
99.00	7998.0
100.00	820.0
101.00	3981.0
102.90	1527.0
104.00	2874.0
105.00	2893.0
106.00	848.0
107.00	30760.0
108.00	4885.0
109.10	1103.0
110.00	58112.0
111.00	9274.0
111.90	852.0
112.80	349.0
114.80	310.0
116.00	1382.0
117.00	27416.0
118.00	2140.0
119.00	398.0
120.10	463.0
121.10	457.0
122.00	2566.0
123.00	3775.0
124.00	1233.0
124.90	1738.0
127.00	111504.0
128.10	7700.0
129.00	45680.0
130.00	3800.0
130.90	975.0
132.00	355.0
133.00	390.0
134.00	1702.0
135.00	3783.0
135.90	1139.0
137.10	2438.0
137.80	490.0
139.00	398.0
140.10	861.0
141.00	6422.0
142.00	1997.0
143.00	1246.0
143.90	500.0
146.00	1017.0
147.00	3200.0
148.00	7482.0

Instrument :
BNA_M
ClientSampleId :
DFTPP73

149.00	1673.0
150.00	393.0
151.00	1079.0
152.00	682.0
152.90	2107.0
154.00	1692.0
155.00	3423.0
156.00	4882.0
157.00	931.0
158.00	1281.0
158.90	1145.0
160.00	1995.0
160.90	2997.0
162.00	1031.0
163.10	329.0
165.10	2380.0
166.00	1725.0
167.00	12735.0
168.00	6792.0
169.10	859.0
169.90	392.0
171.00	423.0
171.90	972.0
173.00	1574.0
174.00	3182.0
175.10	4536.0
176.00	2221.0
177.00	2404.0
178.10	753.0
179.00	9090.0
180.00	6468.0
181.10	2721.0
181.90	372.0
182.20	371.0
183.10	373.0
184.00	597.0
185.00	4208.0
186.00	38688.0
187.00	10915.0
188.10	864.0
189.00	1885.0
190.90	1314.0
192.00	3622.0
193.00	4049.0
194.10	699.0
194.90	453.0
196.00	7775.0
197.10	2026.0
198.00	268480.0
199.00	18352.0
200.00	1592.0
201.50	1280.0
202.90	1903.0
204.00	9702.0
205.10	16416.0
206.00	68752.0
207.10	11262.0
208.00	2868.0
209.00	1302.0
210.10	1155.0
211.00	2900.0
211.90	573.0
215.00	1287.0
216.10	1590.0
217.00	19224.0
217.90	2236.0
221.00	12404.0
221.90	2405.0
223.10	3982.0
224.00	38704.0
225.00	9581.0
226.10	1392.0
227.00	17528.0
228.00	2610.0
229.00	3627.0
229.90	418.0
230.90	1329.0
233.10	352.0
234.00	986.0
235.00	1389.0
235.90	1045.0
237.10	1246.0
237.90	430.0
238.90	480.0
239.90	668.0
240.90	832.0
242.00	1765.0
243.10	2176.0
244.10	31032.0
245.00	3540.0
246.00	7132.0
247.00	1358.0
249.00	1277.0
251.90	435.0
252.90	657.0

Instrument :
BNA_M
ClientSampleId :
DFTPP73

254.20	1680.0
255.00	172672.0
256.00	23752.0
257.10	1983.0
258.00	10442.0
259.00	1341.0
260.00	360.0
260.90	370.0
265.00	3883.0
266.10	421.0
269.90	444.0
271.00	377.0
272.00	424.0
273.00	5390.0
274.00	15631.0
275.00	80472.0
276.10	9175.0
277.00	7480.0
277.90	1264.0
281.00	799.0
282.00	496.0
283.00	748.0
284.00	793.0
285.10	1584.0
285.90	420.0
290.00	310.0
292.10	369.0
293.10	1647.0
293.90	444.0
294.90	675.0
296.00	23800.0
297.00	3286.0
298.00	338.0
301.00	345.0
302.00	465.0
303.10	2484.0
304.10	942.0
309.90	316.0
314.10	1473.0
315.00	2761.0
316.00	1939.0
317.00	476.0
321.00	813.0
322.10	314.0
323.10	7267.0
324.00	1683.0
327.00	1371.0
328.00	690.0
332.00	934.0
333.00	923.0
334.00	4578.0
335.10	1227.0
341.10	1216.0
346.10	1773.0
352.00	2004.0
353.00	1437.0
354.10	3010.0
355.10	620.0
365.00	12308.0
365.90	1435.0
371.10	776.0
372.10	4048.0
373.00	1226.0
383.10	1517.0
390.00	492.0
401.00	442.0
402.00	2267.0
403.00	2543.0
404.10	1037.0
421.10	2037.0
422.00	1911.0
423.10	15339.0
424.10	4333.0
424.90	601.0
441.10	42192.0
442.10	279104.0
443.10	51440.0
444.10	5053.0

Instrument :
BNA_M
ClientSampleId :
DFTPP73