

Data Path : Z:\svoasrv\HPCHEM1\BNA_M\Data\BM120822\
 Data File : BM037901.D
 Acq On : 08 Dec 2022 23:57
 Operator : CG/JU
 Sample : N5832-21 5X
 Misc :
 ALS Vial : 26 Sample Multiplier: 1

Instrument :
 BNA_M
 ClientSampleId :
 DBXL6

Quant Time: Dec 09 01:51:09 2022
 Quant Method : Z:\svoasrv\HPCHEM1\BNA_M\Methods\SFAM-EPA-BM120722.M
 Quant Title : SVOA CALIBRATION
 QLast Update : Thu Dec 08 01:49:06 2022
 Response via : Initial Calibration

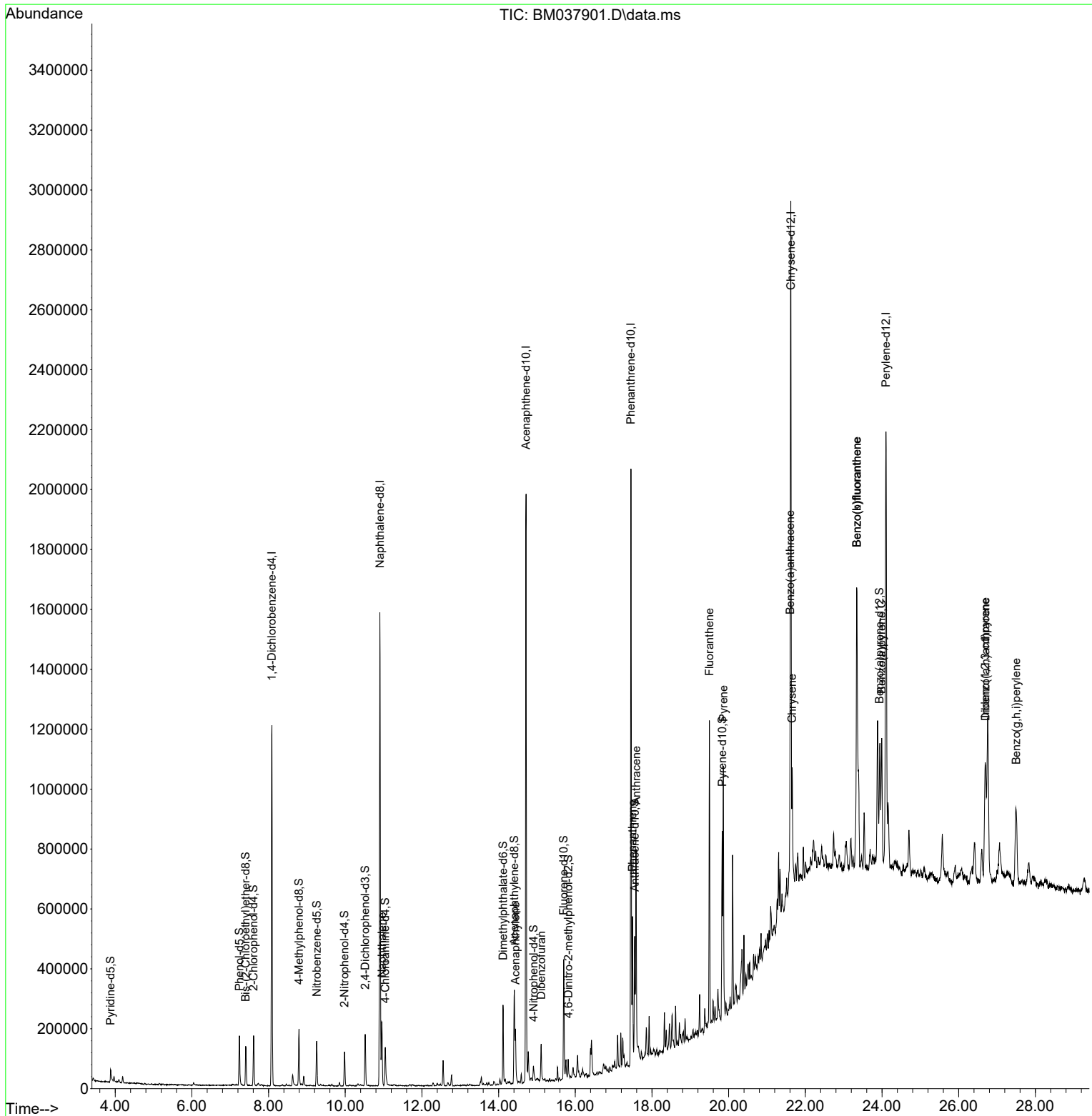
Compound	R.T.	QIon	Response	Conc	Units	Dev(Min)
Internal Standards						
1) 1,4-Dichlorobenzene-d4	8.087	152	332881	20.000	ng/ul	0.00
20) Naphthalene-d8	10.904	136	1280982	20.000	ng/ul	0.00
38) Acenaphthene-d10	14.716	164	672419	20.000	ng/ul	0.00
64) Phenanthrene-d10	17.451	188	1247985	20.000	ng/ul	0.00
79) Chrysene-d12	21.621	240	1030156	20.000	ng/ul	0.00
88) Perylene-d12	24.103	264	1181677	20.000	ng/ul	0.00
System Monitoring Compounds						
3) 1,4-Dioxane-d8	3.422	96	4523	0.617	ng/uL	0.00
4) Pyridine-d5	3.881	84	24994	1.149	ng/ul	0.02
7) Phenol-d5	7.240	99	90710	3.353	ng/ul	0.00
9) Bis-(2-Chloroethyl)eth...	7.404	67	56531	3.432	ng/ul	0.00
11) 2-Chlorophenol-d4	7.610	132	77275	3.482	ng/ul	0.00
15) 4-Methylphenol-d8	8.792	113	68020	3.221	ng/ul	0.00
21) Nitrobenzene-d5	9.257	128	36314	3.580	ng/ul	0.00
24) 2-Nitrophenol-d4	9.981	143	36146	3.401	ng/ul	0.00
28) 2,4-Dichlorophenol-d3	10.522	165	66359	3.287	ng/ul	0.00
31) 4-Chloroaniline-d4	11.045	131	67587	2.425	ng/ul	0.00
46) Dimethylphthalate-d6	14.116	166	179949	3.754	ng/ul	-0.01
49) Acenaphthylene-d8	14.410	160	212079	3.620	ng/ul	0.00
54) 4-Nitrophenol-d4	14.910	143	16064	1.966	ng/ul	0.00
60) Fluorene-d10	15.698	176	162263	3.799	ng/ul	0.00
65) 4,6-Dinitro-2-methylph...	15.821	200	12947	1.940	ng/ul	0.00
73) Anthracene-d10	17.551	188	242369	4.161	ng/ul	0.00
81) Pyrene-d10	19.833	212	270226	4.367	ng/ul	0.00
92) Benzo(a)pyrene-d12	23.939	264	251442	4.260	ng/ul	0.00
Target Compounds						
30) Naphthalene	10.957	128	171021	2.474	ng/ul	98
50) Acenaphthylene	14.439	152	141491	2.196	ng/ul	98
56) Dibenzofuran	15.110	168	79082	1.300	ng/ul	99
72) Phenanthrene	17.492	178	280650	4.118	ng/ul	99
74) Anthracene	17.586	178	480705	6.941	ng/ul	98
80) Fluoranthene	19.498	202	589247	8.068	ng/ul	98
82) Pyrene	19.862	202	500699	6.588	ng/ul	99
85) Benzo(a)anthracene	21.603	228	246017	3.547	ng/ul	96
87) Chrysene	21.656	228	184863	2.841	ng/ul	97
90) Benzo(b)fluoranthene	23.344	252	838188	11.441	ng/ul	98
91) Benzo(k)fluoranthene	23.344	252	838188	11.806	ng/ul	98
93) Benzo(a)pyrene	23.991	252	314627	4.884	ng/ul	94
94) Indeno(1,2,3-cd)pyrene	26.691	276	458162	5.522	ng/ul#	94
95) Dibenzo(a,h)anthracene	26.703	278	107028	1.530	ng/ul#	83
96) Benzo(g,h,i)perylene	27.497	276	363873	5.493	ng/ul	100

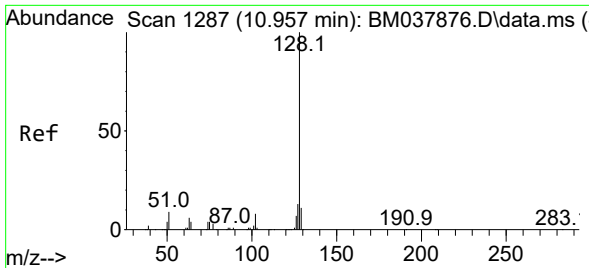
(#) = qualifier out of range (m) = manual integration (+) = signals summed

Data Path : Z:\svoasrv\HPCHEM1\BNA_M\Data\BM120822\
 Data File : BM037901.D
 Acq On : 08 Dec 2022 23:57
 Operator : CG/JU
 Sample : N5832-21 5X
 Misc :
 ALS Vial : 26 Sample Multiplier: 1

Instrument :
 BNA_M
 ClientSampleId :
 DBXL6

Quant Time: Dec 09 01:51:09 2022
 Quant Method : Z:\svoasrv\HPCHEM1\BNA_M\Methods\SFAM-EPA-BM120722.M
 Quant Title : SVOA CALIBRATION
 QLast Update : Thu Dec 08 01:49:06 2022
 Response via : Initial Calibration



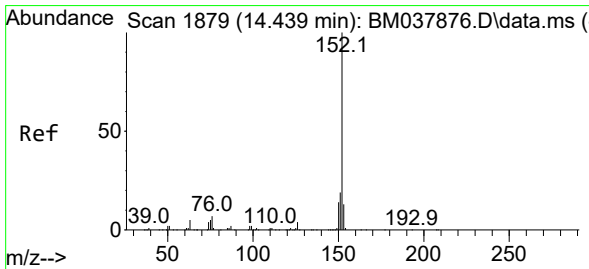
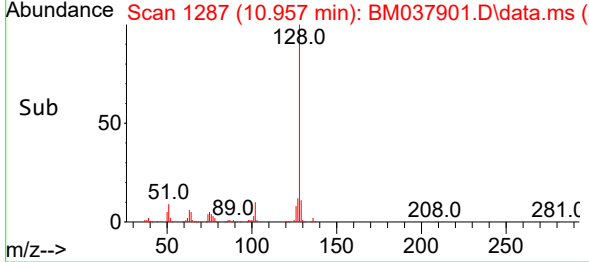
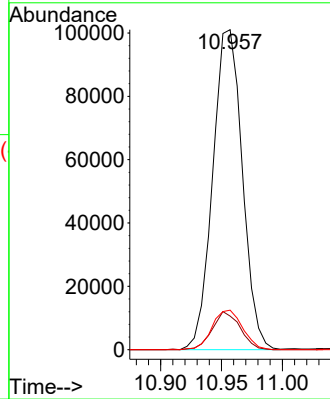
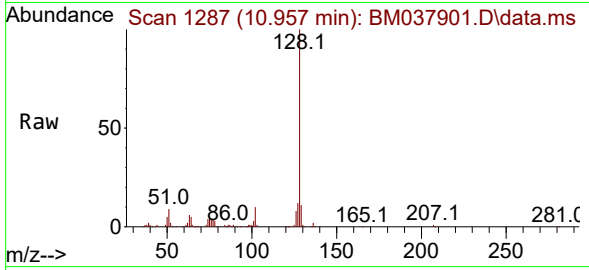


#30
 Naphthalene
 Concen: 2.474 ng/uI
 RT: 10.957 min Scan# 11
 Delta R.T. -0.006 min
 Lab File: BM037901.D
 Acq: 08 Dec 2022 23:57

Instrument :
 BNA_M
 ClientSampleId :
 DBXL6

Tgt Ion:128 Resp: 171021

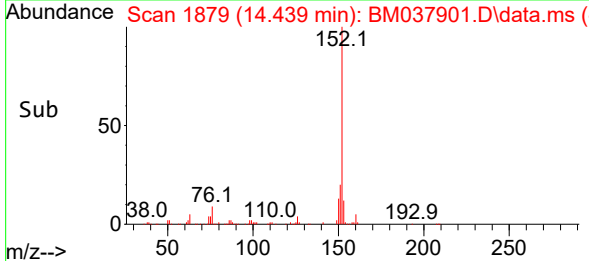
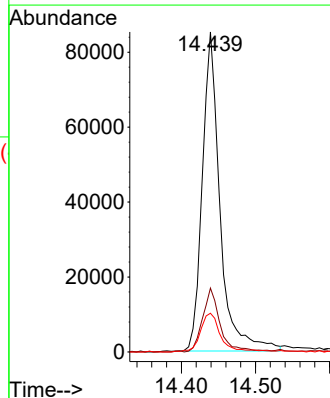
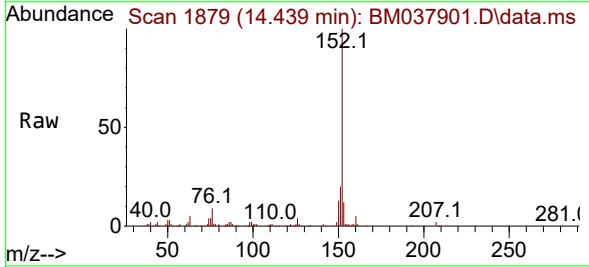
Ion	Ratio	Lower	Upper
128	100		
129	10.5	9.0	13.4
127	12.4	10.4	15.6

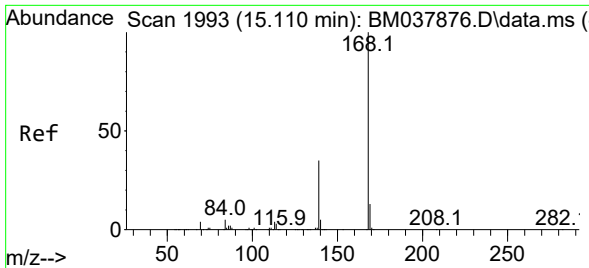


#50
 Acenaphthylene
 Concen: 2.196 ng/uI
 RT: 14.439 min Scan# 1879
 Delta R.T. -0.006 min
 Lab File: BM037901.D
 Acq: 08 Dec 2022 23:57

Tgt Ion:152 Resp: 141491

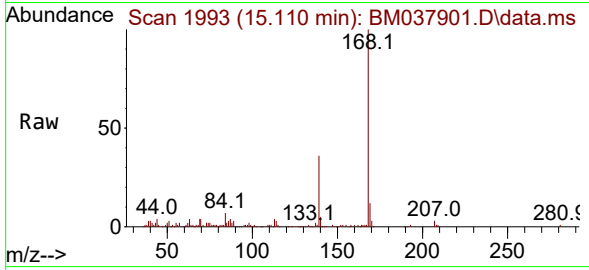
Ion	Ratio	Lower	Upper
152	100		
151	20.0	15.3	22.9
153	12.1	10.2	15.4



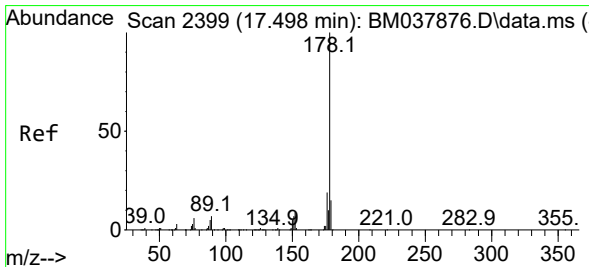
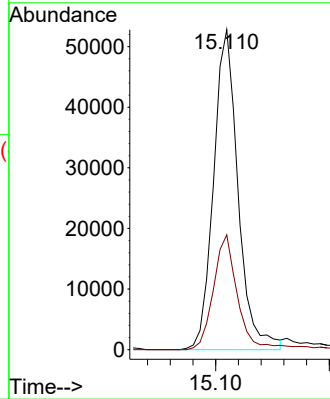
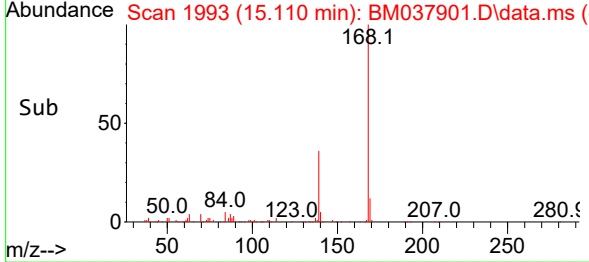


#56
 Dibenzenofuran
 Concen: 1.300 ng/ul
 RT: 15.110 min Scan# 1993
 Delta R.T. -0.006 min
 Lab File: BM037901.D
 Acq: 08 Dec 2022 23:57

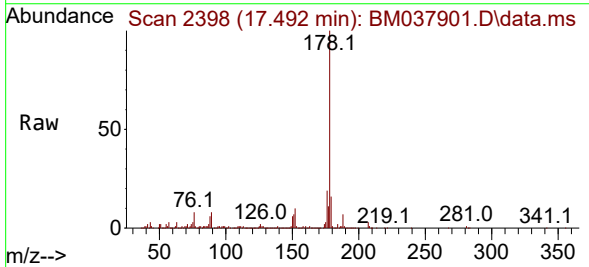
Instrument :
 BNA_M
 ClientSampleId :
 DBXL6



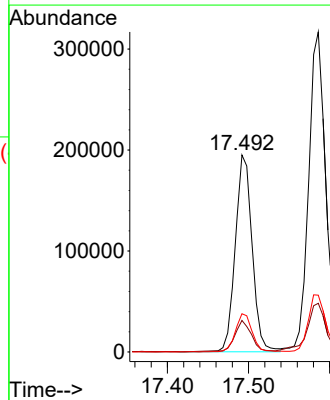
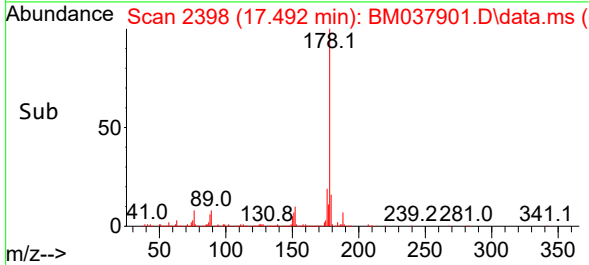
Tgt Ion:168 Resp: 79082
 Ion Ratio Lower Upper
 168 100
 139 35.9 28.1 42.1

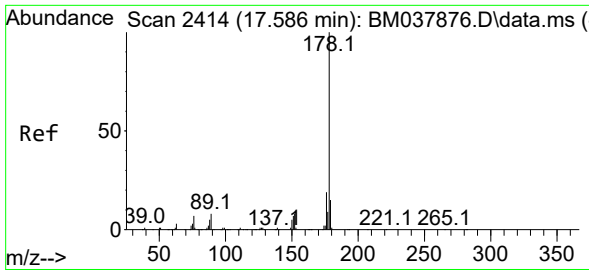


#72
 Phenanthrene
 Concen: 4.118 ng/ul
 RT: 17.492 min Scan# 2398
 Delta R.T. -0.006 min
 Lab File: BM037901.D
 Acq: 08 Dec 2022 23:57



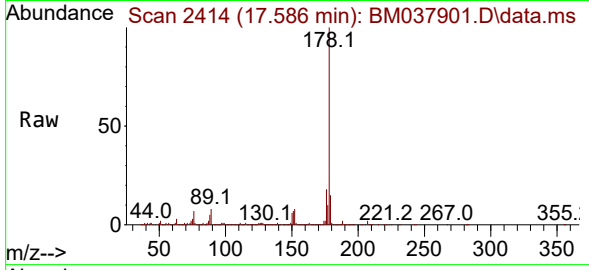
Tgt Ion:178 Resp: 280650
 Ion Ratio Lower Upper
 178 100
 179 16.0 12.2 18.2
 176 19.5 15.4 23.0



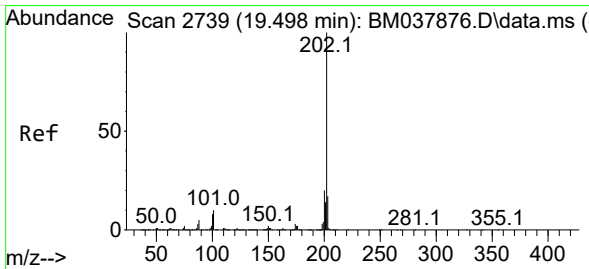
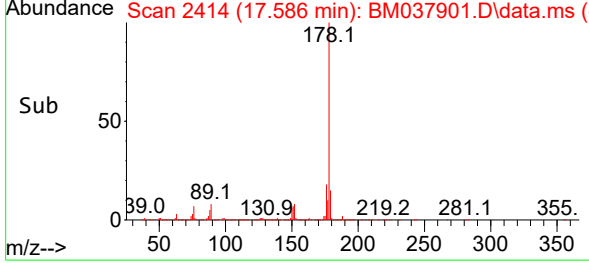
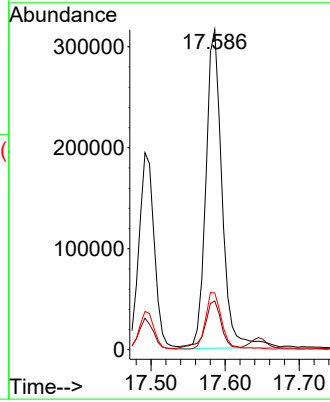


#74
 Anthracene
 Concen: 6.941 ng/u1
 RT: 17.586 min Scan# 2414
 Delta R.T. -0.006 min
 Lab File: BM037901.D
 Acq: 08 Dec 2022 23:57

Instrument :
 BNA_M
 ClientSampleId :
 DBXL6

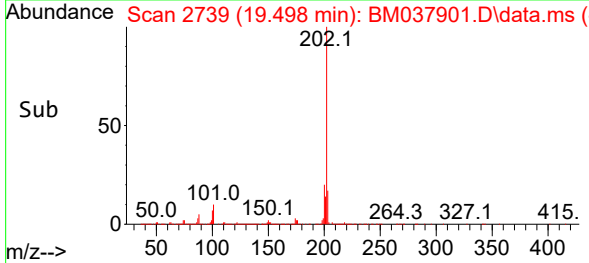
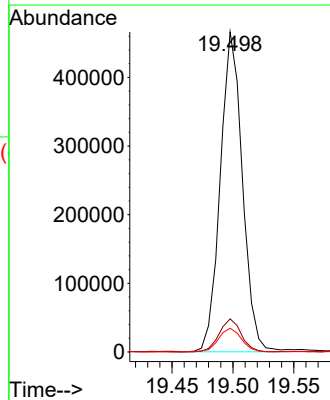
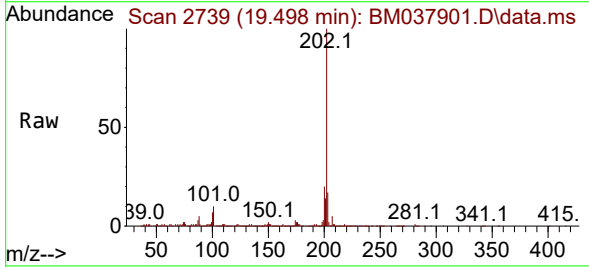


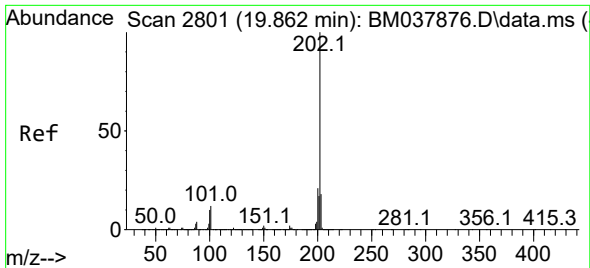
Tgt Ion:178 Resp: 480705
 Ion Ratio Lower Upper
 178 100
 179 15.2 11.8 17.8
 176 17.7 15.0 22.6



#80
 Fluoranthene
 Concen: 8.068 ng/u1
 RT: 19.498 min Scan# 2739
 Delta R.T. -0.006 min
 Lab File: BM037901.D
 Acq: 08 Dec 2022 23:57

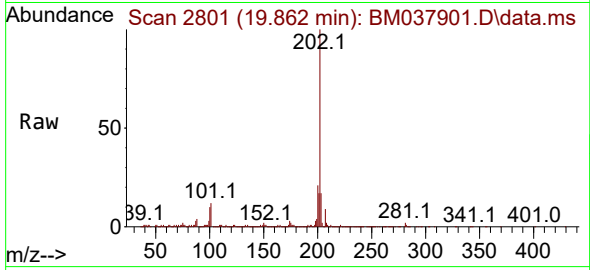
Tgt Ion:202 Resp: 589247
 Ion Ratio Lower Upper
 202 100
 101 10.4 8.6 13.0
 100 7.4 6.6 10.0



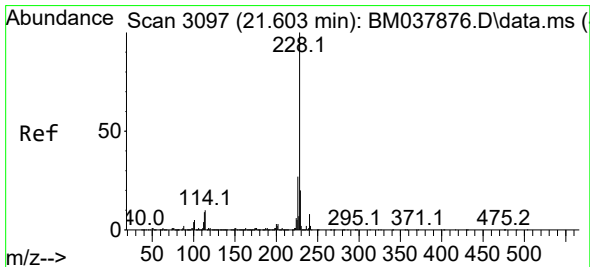
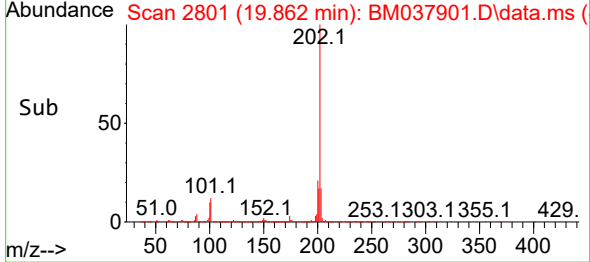
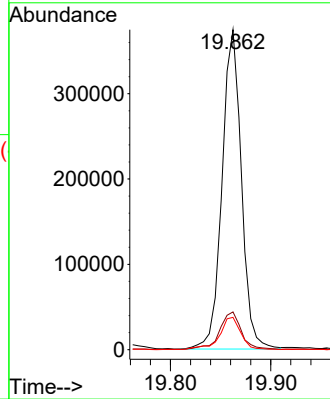


#82
 Pyrene
 Concen: 6.588 ng/ul
 RT: 19.862 min Scan# 2801
 Delta R.T. -0.006 min
 Lab File: BM037901.D
 Acq: 08 Dec 2022 23:57

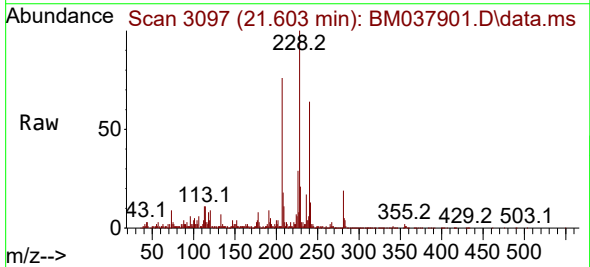
Instrument :
 BNA_M
 ClientSampleId :
 DBXL6



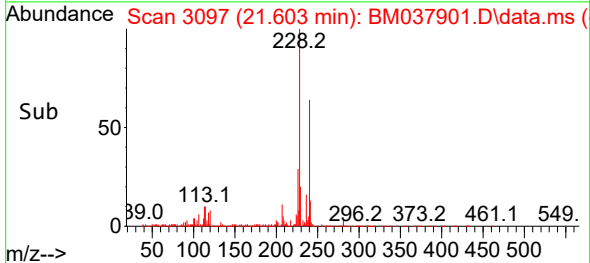
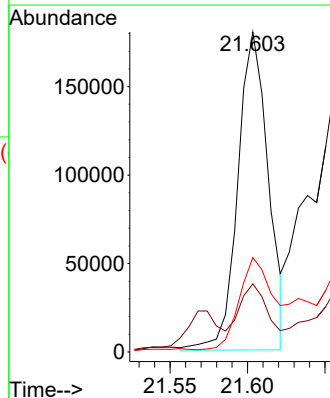
Tgt Ion:202 Resp: 500699
 Ion Ratio Lower Upper
 202 100
 101 11.8 10.0 15.0
 100 10.1 7.9 11.9

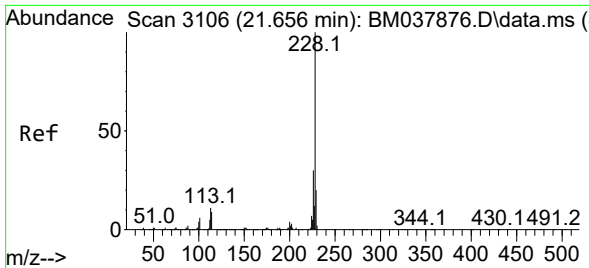


#85
 Benzo(a)anthracene
 Concen: 3.547 ng/ul
 RT: 21.603 min Scan# 3097
 Delta R.T. -0.006 min
 Lab File: BM037901.D
 Acq: 08 Dec 2022 23:57



Tgt Ion:228 Resp: 246017
 Ion Ratio Lower Upper
 228 100
 229 21.3 15.5 23.3
 226 29.5 21.8 32.8



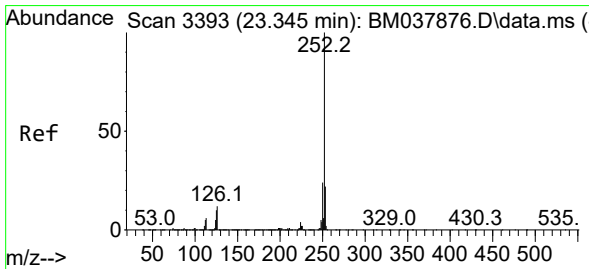
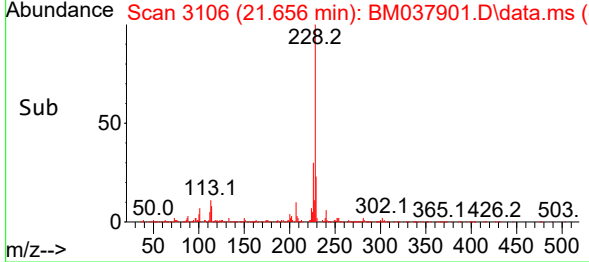
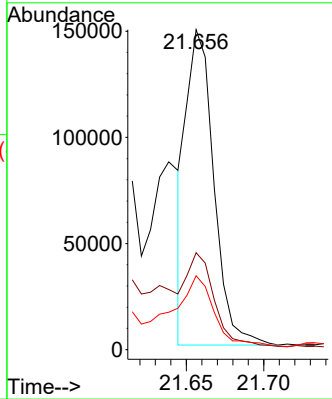
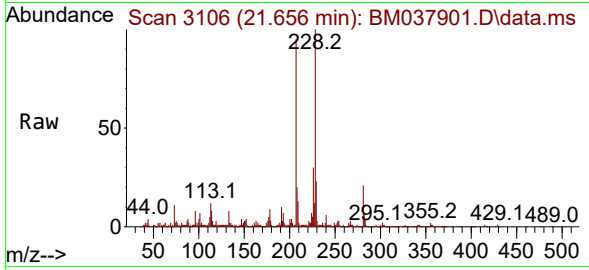


#87
 Chrysene
 Concen: 2.841 ng/ul
 RT: 21.656 min Scan# 3106
 Delta R.T. -0.006 min
 Lab File: BM037901.D
 Acq: 08 Dec 2022 23:57

Instrument : BNA_M
 Client Sample Id : DBXL6

Tgt Ion: 228 Resp: 184863

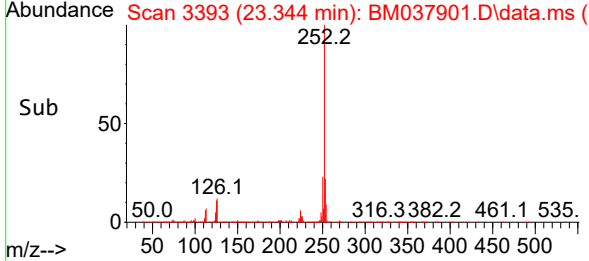
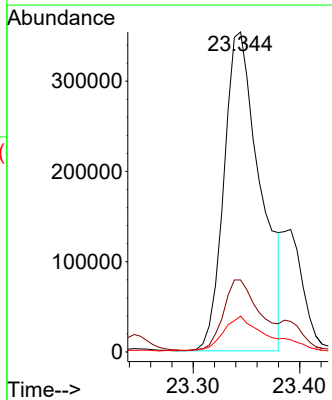
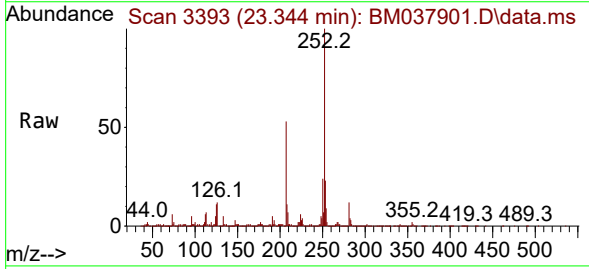
Ion	Ratio	Lower	Upper
228	100		
226	30.3	24.3	36.5
229	23.1	15.6	23.4

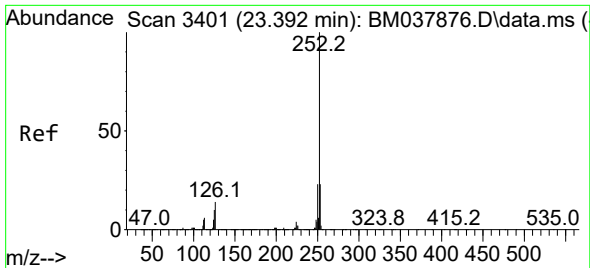


#90
 Benzo(b)fluoranthene
 Concen: 11.441 ng/ul
 RT: 23.344 min Scan# 3393
 Delta R.T. 0.000 min
 Lab File: BM037901.D
 Acq: 08 Dec 2022 23:57

Tgt Ion: 252 Resp: 838188

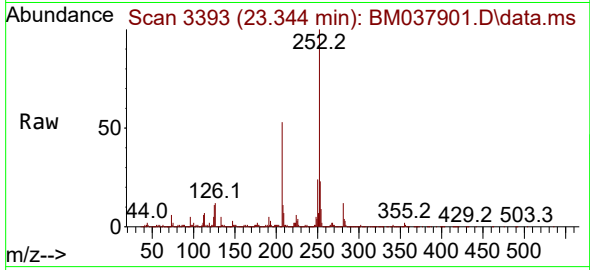
Ion	Ratio	Lower	Upper
252	100		
253	22.5	17.6	26.4
125	11.2	8.0	12.0



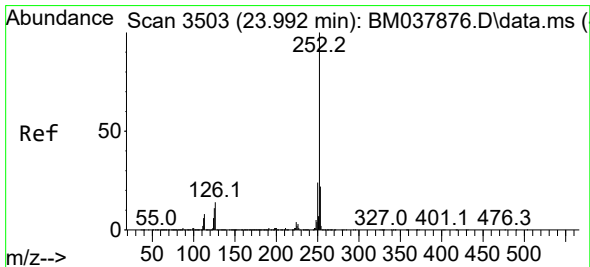
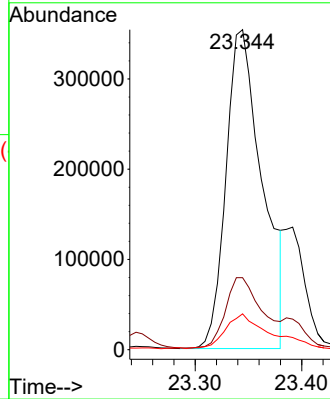
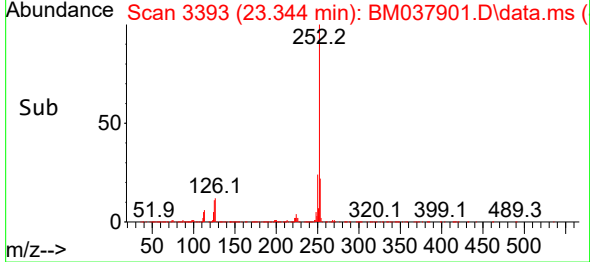


#91
 Benzo(k)fluoranthene
 Concen: 11.806 ng/uI
 RT: 23.344 min Scan# 31
 Delta R.T. -0.053 min
 Lab File: BM037901.D
 Acq: 08 Dec 2022 23:57

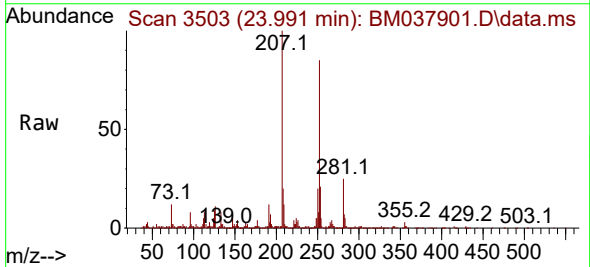
Instrument :
 BNA_M
 ClientSampleId :
 DBXL6



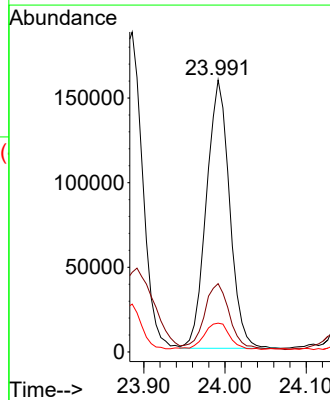
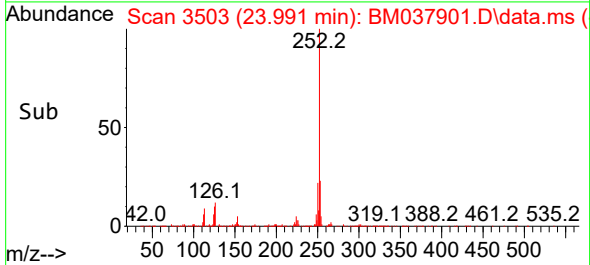
Tgt Ion:252 Resp: 838188
 Ion Ratio Lower Upper
 252 100
 253 22.5 17.4 26.2
 125 11.2 8.1 12.1

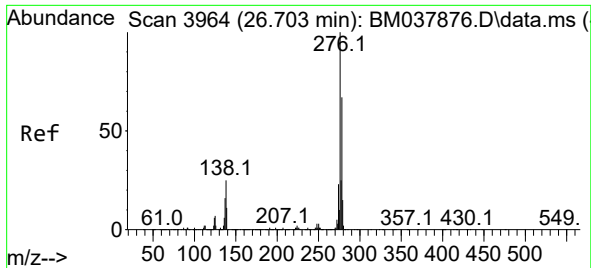


#93
 Benzo(a)pyrene
 Concen: 4.884 ng/uI
 RT: 23.991 min Scan# 3503
 Delta R.T. -0.006 min
 Lab File: BM037901.D
 Acq: 08 Dec 2022 23:57



Tgt Ion:252 Resp: 314627
 Ion Ratio Lower Upper
 252 100
 253 25.1 17.4 26.0
 125 10.6 9.4 14.0



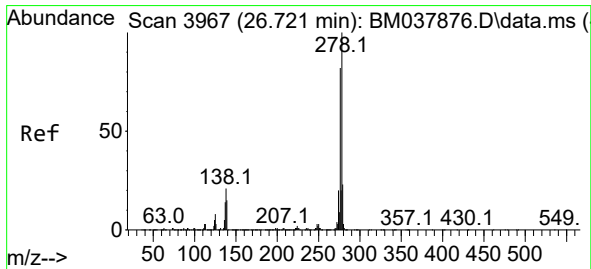
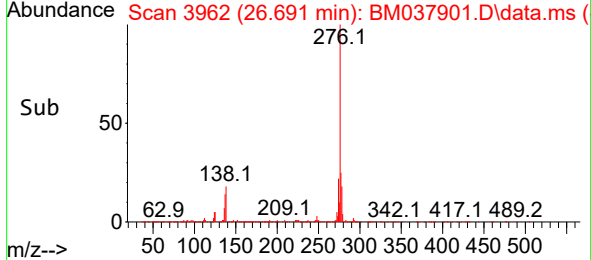
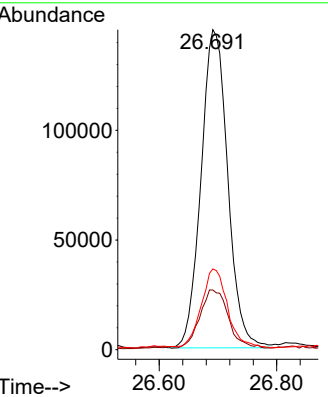
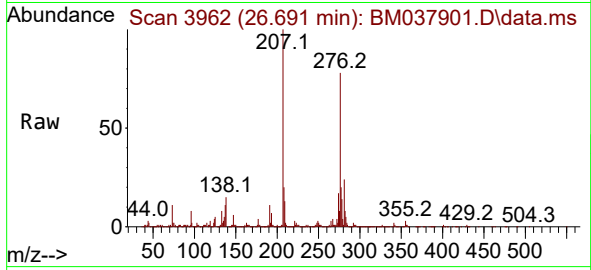


#94
 Indeno(1,2,3-cd)pyrene
 Concen: 5.522 ng/uI
 RT: 26.691 min Scan# 3962
 Delta R.T. -0.018 min
 Lab File: BM037901.D
 Acq: 08 Dec 2022 23:57

Instrument :
 BNA_M
 ClientSampleId :
 DBXL6

Tgt Ion: 276 Resp: 458162

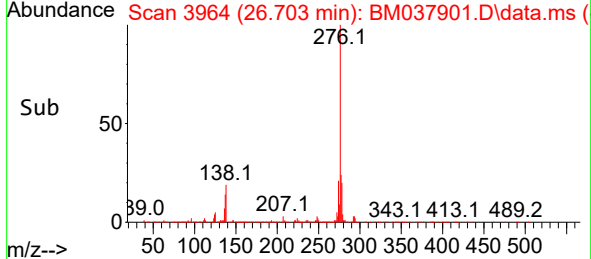
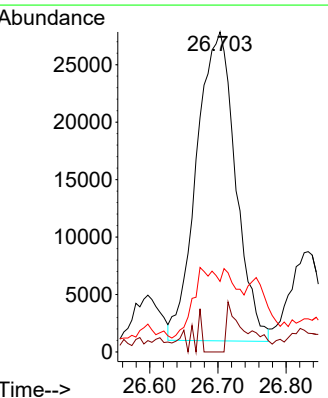
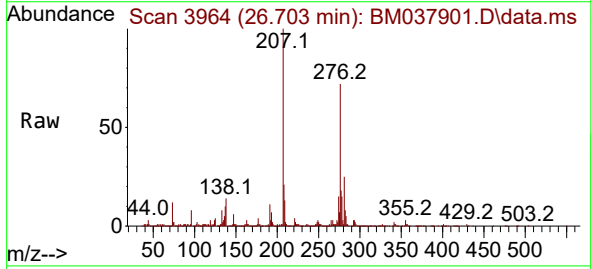
Ion	Ratio	Lower	Upper
276	100		
138	18.7	19.3	28.9#
277	25.2	19.8	29.8

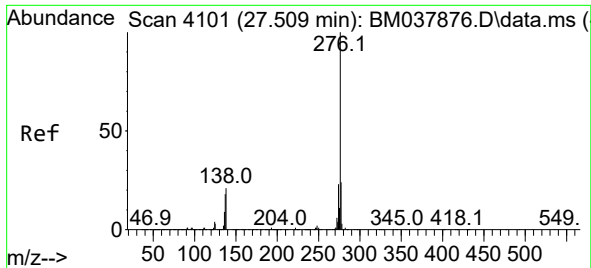


#95
 Dibenzo(a,h)anthracene
 Concen: 1.530 ng/uI
 RT: 26.703 min Scan# 3964
 Delta R.T. -0.023 min
 Lab File: BM037901.D
 Acq: 08 Dec 2022 23:57

Tgt Ion: 278 Resp: 107028

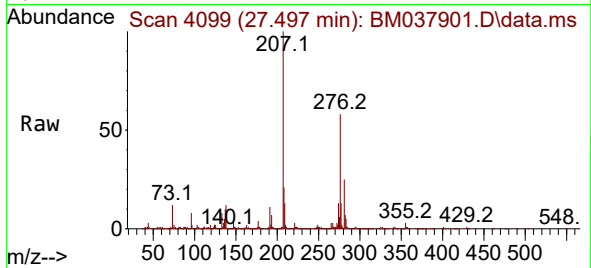
Ion	Ratio	Lower	Upper
278	100		
139	0.0	12.4	18.6#
279	22.0	19.8	29.6





#96
 Benzo(g,h,i)perylene
 Concen: 5.493 ng/ul
 RT: 27.497 min Scan# 4099
 Delta R.T. -0.018 min
 Lab File: BM037901.D
 Acq: 08 Dec 2022 23:57

Instrument :
 BNA_M
 ClientSampleId :
 DBXL6



Tgt Ion:276 Resp: 363873
 Ion Ratio Lower Upper
 276 100
 138 21.1 17.1 25.7
 277 22.8 18.2 27.4

